



FECA F-ROC for Leaders

April 10, 2024



With You Today



Melissa Foggy
FDEM



Dr. Matt Ramirez
KPMG

Agenda

01

F-ROC Overview

02

DRA

03

F-ROC Abatement

04

F-ROC Benefits

05

F-ROC Scoring

06

What's Next





F-ROC Overview



What Will Help Change Public Assistance?

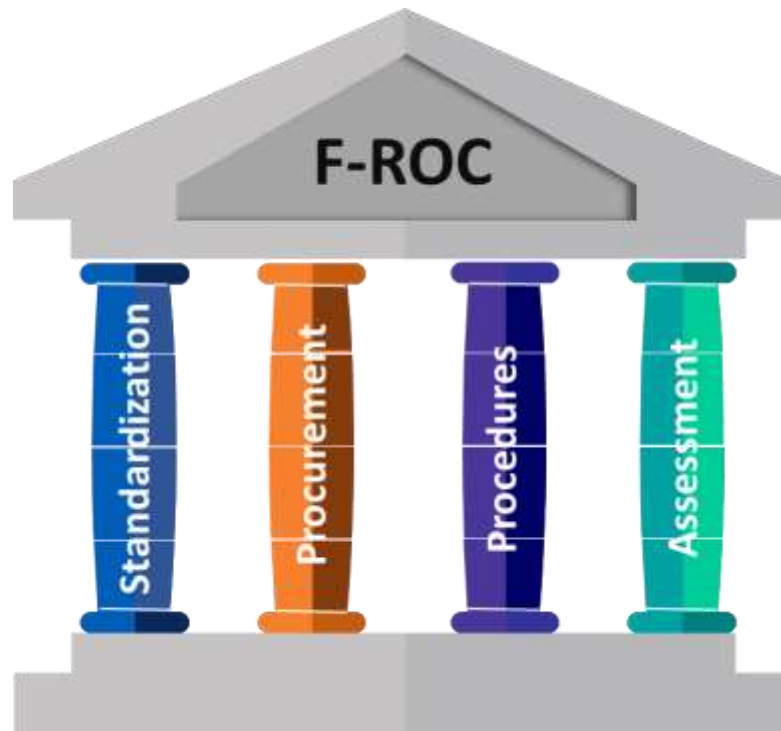
The State-sponsored F-ROC initiative addresses current-state challenges by encouraging a proactive and streamlined approach to recovery, reducing risk, and implementing measures that enhance Applicants' ability to successfully navigate the Public Assistance process.

PILLAR 1: STANDARDIZATION

F-ROC standardizes and simplifies forms, making it easier to **submit accurate documentation** for Public Assistance and receive funding timely.

PILLAR 2: PROCUREMENT

F-ROC helps you to ensure you have contractors and vendors in place and your **procurement plans meet federal regulations**.



PILLAR 3: PROCEDURES

F-ROC helps you prepare for events by ensuring you have **policies and procedures** that are accurate, **up-to-date**, and follow **FEMA guidelines**.

PILLAR 4: ASSESSMENT

The Disaster Readiness Assessment provides you with the insights needed to be successful. Applicants who employ all four pillars of the program can receive **up to 85% of funding** upon obligation.

Standardized Forms



Contract Work Summary Record	Debris Management Site Checklist	Leaner-Hanger Summary	Mutual Aid - State Mission Cost Estimate Form - Editable PC
Crew Time Report	Demolition of Private Property Eligibility Checklist	Leaner-Hanger-Stump Ticket – Example	Mutual Aid - State Mission Cost Estimate Form - Editable Travel
Daily Activity Report- Inmates	Donated Resources - Emergency Work Checklist	Load Site Log	On-Hand Materials and Supplies Usage Log
Daily Activity Reports- Individual	Equipment Inventory Log	Mosquito Abatement – Vector Control Checklist	Public Assistance Applicant Procurement Compliance Checklist
Daily Activity Reports- Individual EMS	Expanded Daily Activity Reports – Team - National Guard	Mutual Aid - EMAC R-2	Right of Entry – Example
Daily Activity Reports- Individual Firefighter	FEMA EHP Completeness Checklist for CAT A and B Permit Reference List	Mutual Aid - SMAA Local Resource Support Agreement	Sign-In Sheet
Daily Activity Reports – Individual – Law Enforcement	First Push Activity Log	Mutual Aid - State Mission Cost Estimate Form - Editable	Stump Summary
Daily Activity Reports- Team	Haul-Out Log	Mutual Aid - State Mission Cost Estimate Form – Editable EC.	Tower Monitor Summary Form
Daily Roving Monitor Log	Initial Damage Assessment	Mutual Aid - State Mission Cost Est. Form – Editable Equipment Rates	Truck Certification Form & Instructions
Debris Load Ticket Template	Labor Backfill Form	Mutual Aid - State Mission Cost Est. Form - Editable Materials	Unmanned Equipment Usage Log
	Labor Roster	Mutual Aid- Claim Summary Form	



Individual Daily Activity Report - Power Restoration



Employee Name:

Employee ID:

Applicant Name:

Department:

Date:

Emergency Work Categories: A (Debris Removal) B (Emergency Protective Measures)

Permanent Work Categories: C (Roads and Bridges) D (Water Control) E (Buildings and Equipment) F (Utility Systems) G (Recreational & Other)

Note: If conducting temporary repairs to a Cat C - G site, please utilize Cat B for this activity

Category	Description of Work Performed	Work Location	Start Time	End Time	Labor Hours	Event Related
B	EPM - Emergency Access					
B	EPM - Emergency Access					
	EPM - Supplies/Commodities (Purchase or Distribution)					
	EPM - EOC Support Operations					
	EPM - Post Disaster Power Restoration (Powerline)					
	EPM - Post Disaster Power Restoration (Power C					
	EPM - Post Disaster Power Restoration (Substation)					
	EPM - Restore Secured Facilities					
	EPM - Temporary Repairs					

Total Non-Event Related Hours: 0.00

Total Event Related Hours: 0.00

Employee Signature:

(If only filling out information on this page, otherwise leave blank)

Reviewer Signature:

F R O C

The Focus of F-ROC



Building Equity
in Public
Assistance



State
Managed,
Federally
Supported



Making
Recovery
Proactive



Reduction of
Risk



Evaluation of
Risk



Standardized
Process



Power Restoration Work Category



FEMA is providing applicants flexibility in how they claim costs for the work associated with power restoration projects

For power restoration projects that **meet both emergency work and the permanent eligibility criteria**, applicants may either claim the work as:

- an Emergency Protective Measure (**Category B**) (Note, force account labor straight-time for budgeted employees is not eligible as Emergency Work); or
- Permanent Work (**Category F**) (Note, mitigation funding authorized under the Robert T. Stafford Act Section 406 is only eligible when power restoration is funded as Permanent Work).

Note: temporary power restoration work that is not completed in accordance with applicable codes and standards will be categorized as Category B.



Disaster Readiness Assessment (DRA)



Disaster Readiness Assessment (DRA)



What it is

Applicants complete and submit an online risk self-assessment questionnaire based on the Recipient's approved evaluation criteria to assess FEMA PA program compliance risk. Based upon the responses provided and review of the supporting documents, pre-disaster compliance risk ratings are assigned.

The questionnaire is specifically tailored to the Recipient's and Applicant's biggest risks leading to deobligation and delay in reimbursement.

How it works

Applicant: An Applicant answers a series of questions covering the FEMA PA Categories, state requirements, and processes that are ultimately reviewed by the Recipient to determine the Applicant's pre-disaster compliance risk score or rating.

Recipient: The Recipient reviews Applicants' answers and supporting documentation and provides feedback for follow-up to allow an Applicant the opportunity to address the high or moderate risk areas.

The image displays several screenshots of the KPMG Disaster Readiness Assessment (DRA) application interface. The top screenshot shows the "APPLICANT VIEW: ASSESSMENT QUESTIONNAIRE" page, which includes a navigation menu with options like Home, Assessment, Organization Requests, Contract Request, Assessment, Documents, Risk Score, and Reports. The main content area contains a questionnaire with various questions and a "Risk Score" section. Below this, there are two pie charts showing risk distribution by category: "Substantive Risk Rating" and "Emerging Protective Risk Rating". The bottom screenshot shows the "APPLICANT VIEW: RISK SCORE" page, which displays a "Risk Score" section with a pie chart and a table showing risk ratings for different categories. The table has columns for "Category", "Initial Score", "Updated Score", and "Assessment Score". The "Assessment Summary" section is also visible, showing a progress bar and a table of documents with columns for "Document Type", "Uploaded Documents", "Unable to upload Documents", "Description", "Expiration Date", and "Action".



Assessment Questionnaire

Category

Applicant Experience

3/8



Questions

Status

Q1.a. If yes, has this Applicant ...



Complete

Q1.b. If yes, was any of the fun...



Complete

Q1.c. If yes, please select the d...



Not
Started

Summary

1: Has this Applicant previous been awarded Federal funding?

A

Yes, the Applicant has been awarded Federal funding for at least 5 out of the last 10 years.

B

Yes, the Applicant has been awarded Federal funding for 2-4 out of the last 10 years.

C

No, the Applicant does not have any experience with a Federal Grants program or has only been awarded Federal funding for 1 year or less out of the last 10 years.



Based on your response, you will be required to upload documents prior to submission of assessment.



[Add Comments](#)

Save & Next →



Assessment Questionnaire

Category

Applicant Experience

2/5



Policy/Procedure

0/13



Questions

Status

Q5. Does the Applicant have a...

Not Started

Q6. Does the Applicant have a...

Not Started

Summary

6 : Does the Applicant have an emergency financial plan as noted in F.S. 252.391? ⓘ

A

Yes, the Applicant has an emergency financial plan.

B

No, the Applicant does not have an emergency financial plan.

Reference(s)

[F.S. 252.391; pg. 8](#)



[Add Comments](#)

← Save & Previous

Save & Next →



Disaster Readiness Score

[Back](#)

[Export](#)

Disaster Readiness Score

Last updated February 13, 2023

Debris Removal Risk Rating

LOW

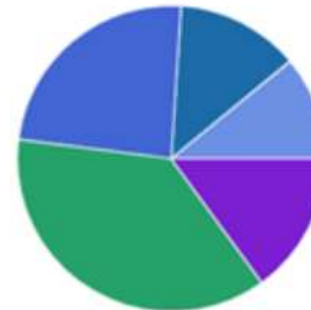


Disaster Readiness Score contribution by category

- Applicant Experience: 7%
- Contract Administration: 9%
- Documentation: 16%
- Policy/Procedure: 12%
- Procurement: 56%

Emergency Protective Measures Risk Rating

LOW



Disaster Readiness Score contribution by category

- Applicant Experience: 11%
- Contract Administration: 13%
- Documentation: 24%
- Policy/Procedure: 37%
- Procurement: 15%



F-ROC Abatement





Abatement Generated

Abatement Reviewed

Abatement Submitted

Recommendations Reviewed

Estimated Due Date: 10/12/2024

578 Days Remaining

Recommend the Applicant updates their labor policy to include language stating that the policy is applied uniformly, regardless of presidential declaration status. Upload a copy of the updated and approved policy. Review approved labor policy with employees and key stakeholders.

Question

Q5.b. Is the Applicant's (and all of its departments) labor policy applied uniformly regardless of a presidential declaration?

Abatement Activities

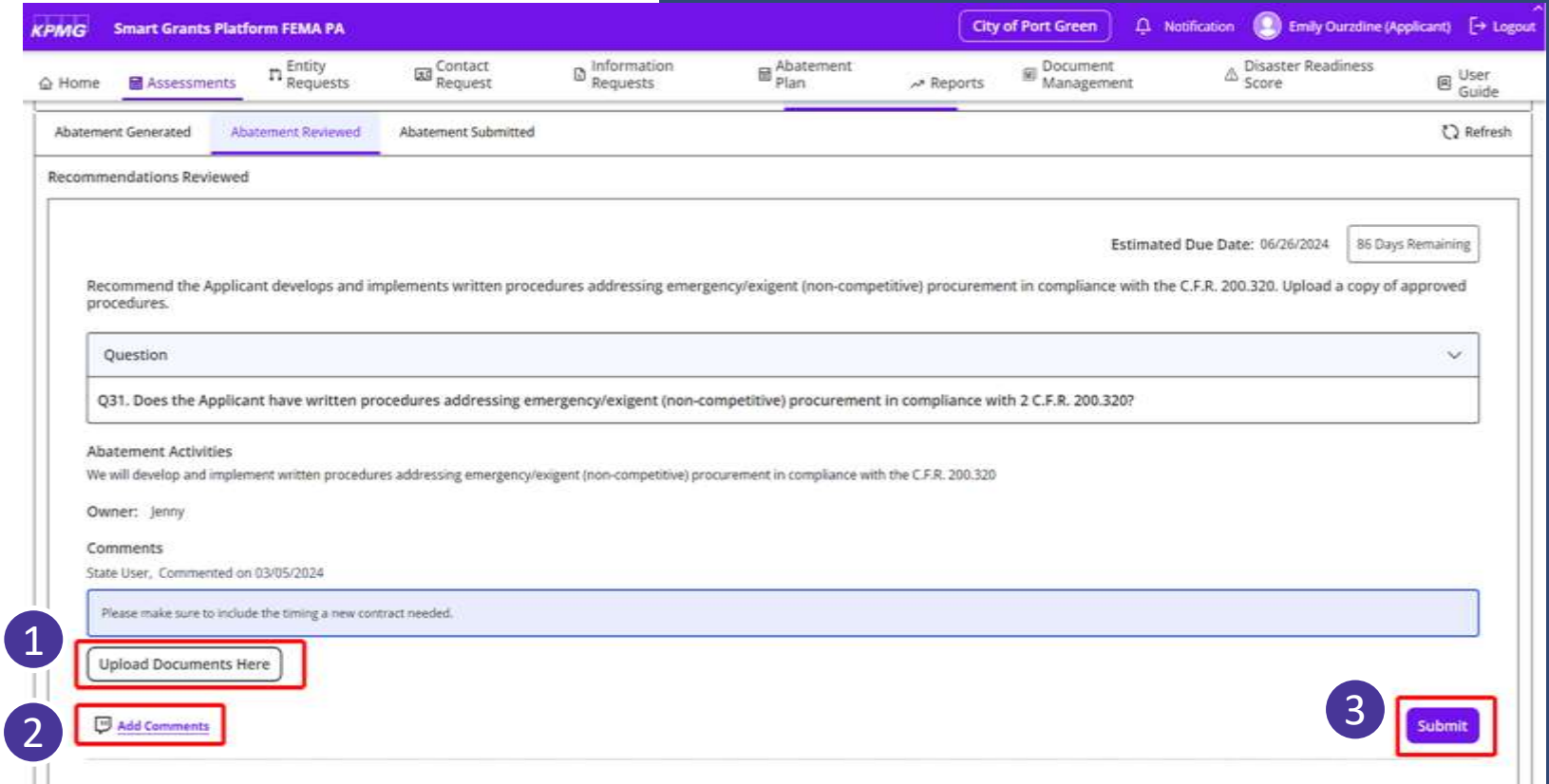
We will include a new provision in our labor policy

Owner: Randy

[Upload Documents Here](#)

Submitting your Abatement Activities

1. Once you have completed the required activities for the Recommendations, you can upload documents to submit for State Review.
2. To add any clarifying comments, select the 'Add Comments' button.
3. Once all documentation and comments have been added, the activity can be submitted for review by clicking the 'Submit' button.



KPMG Smart Grants Platform FEMA PA

City of Port Green Notification Emily Ourzdine (Applicant) Logout

Home Assessments Entity Requests Contact Request Information Requests Abatement Plan Reports Document Management Disaster Readiness Score User Guide

Abatement Generated Abatement Reviewed Abatement Submitted Refresh

Recommendations Reviewed

Estimated Due Date: 06/26/2024 86 Days Remaining

Recommend the Applicant develops and implements written procedures addressing emergency/exigent (non-competitive) procurement in compliance with the C.F.R. 200.320. Upload a copy of approved procedures.

Question

Q31. Does the Applicant have written procedures addressing emergency/exigent (non-competitive) procurement in compliance with 2 C.F.R. 200.320?

Abatement Activities

We will develop and implement written procedures addressing emergency/exigent (non-competitive) procurement in compliance with the C.F.R. 200.320

Owner: Jenny

Comments

State User, Commented on 03/05/2024

Please make sure to include the timing a new contract needed.

1 Upload Documents Here

2 Add Comments

3 Submit



Timeline

Customized Abatement Plan

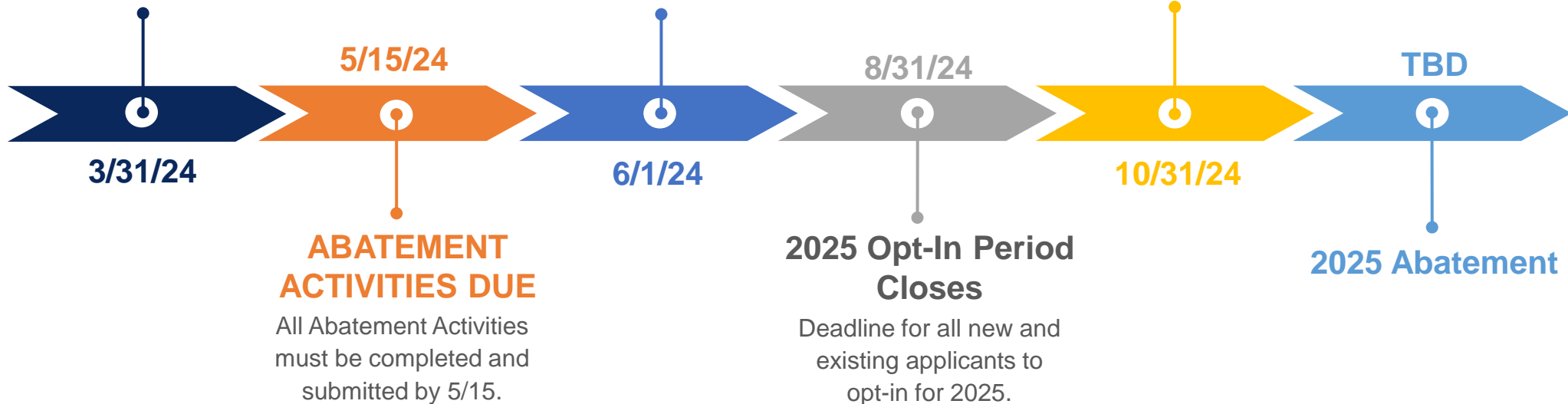
Customized Abatement Plans are due.

2025 Opt-In Period Opens

Beginning June 1, existing applicants can renew their participation and new applicants can opt in to F-ROC for 2025.

2025 DRA Deadline

All Disaster Readiness Assessments are due to FDEM for Validator Review.





F-ROC Benefits



Benefits of F-ROC



Project Formulation
Streamlined processes improve accuracy.



HMGP \$\$\$
Faster obligations mean a higher lock-in and more resilient communities.



Obligation
Streamlined project reviews, results in quicker **obligation**.



Payment
Responsibly moves \$\$\$ to Applicants in need with maximum speed.



F-ROC on a Page

01



Helping communities be more resilient

02



Modernizing & standardizing the way applicants fill out forms

03



Allowing people to focus on recovery needs instead of administrative tasks

04



Getting resources to the community faster and more efficiently



F-ROC Scoring



F-ROC Scoring

The Florida Iceberg! Just like the majority of an iceberg isn't visible, the majority of PA funding can be received upfront through the F-ROC process.

The **maximum F-ROC score is 80**. This score is made up of three components:

Once **validation** of supporting documents is **complete**, you will receive the remainder of the validated, obligated amount

20 Post Disaster Questionnaire
(F-ROC Forms and Training)

40 Disaster Readiness
Assessment

20 Baseline

With F-ROC, you can receive up to **80% Funding Upfront**

*5 bonus points can be earned with EMAP accreditation

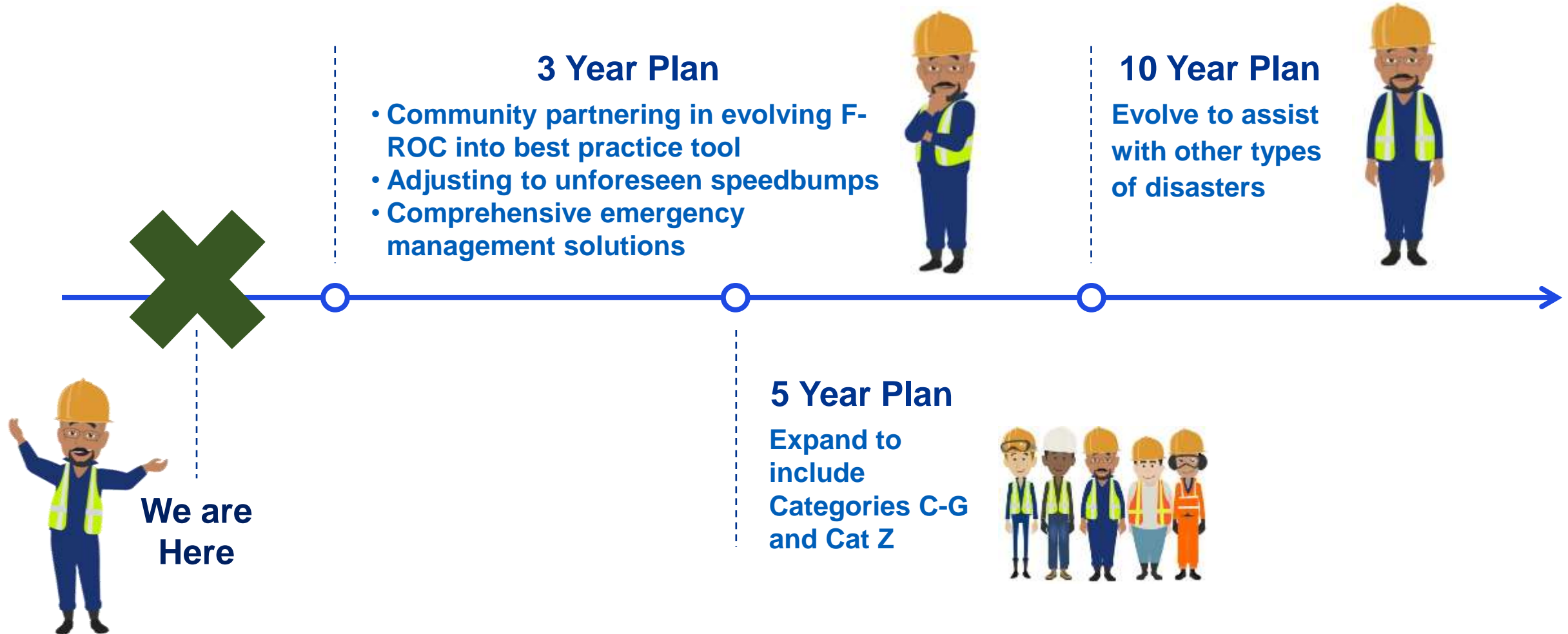


What's Next





Future of F-ROC





Upcoming F-ROC Training

Course Title	Course Description
Implementing the F-ROC Approach: Project Worksheets Fundamentals	This course is designed to equip participants with the essential skills and knowledge needed to develop FEMA Project Worksheets. Through a blend of insights and practical applications, participants will learn to navigate the intricacies of project management, budgeting, resource allocation, and risk assessment using F-ROC methodology.
Procurement Using the F-ROC Approach	Explore procurement management through the innovative lens of the F-ROC Approach. This course delves into the fundamentals of procurement processes and strategies, empowering participants with the knowledge and tools to optimize procurement activities and achieve organizational objectives effectively.
FL- 603: Public Assistance 101 & Grants Management (F-ROC)	Designed specifically for local officials and staff tasked with project management responsibilities within FEMA's Public Assistance (PA) Grants Program, this course provides essential insights and skills to navigate the intricacies of PA and grants management effectively. Through a comprehensive exploration of the F-ROC program, participants will discover how to leverage its methodologies to support and optimize their project management efforts.
FL- 608: Emergency Work Eligibility (F-ROC)	This course offers an in-depth exploration of Public Assistance (PA) eligibility costs, specifically focusing on Category A-B work, while integrating the F-ROC approach to enhance understanding and implementation. Geared towards local officials and staff engaged in managing FEMA's Public Assistance Grants Program, this course provides essential knowledge and strategies to navigate eligibility determinations effectively.
FL- 609: Permanent Work Eligibility (F-ROC)	This course delivers an overview of Public Assistance (PA) eligibility costs, focusing specifically on Category C-G work, while integrating the F-ROC approach to enhance comprehension and implementation. Tailored for local officials and staff tasked with managing FEMA's Public Assistance Grants Program, this course equips participants with essential knowledge and strategies to navigate eligibility determinations effectively.

Would you like to host a session?



Send us a note if you would like to host an F-ROC training session
F-ROC@em.myflorida.com



Call to Action



Opt-in/Enroll in F-ROC
Opt-in to the F-ROC program

Attend F-ROC trainings
available on
SERT TRAC or
other sources

Utilize F-ROC Resources
Utilize F-ROC resources
including forms, checklists, and
customized abatement plan

Share Feedback and Ideas
Send feedback or ideas
and sign up to receive
updates

Become more familiar with Recovery Processes
How are you involved in your
organization with being
“prepared to recover”

Compliance with Federal Regulations
Ensure local
procurement
plans meet
federal
regulations and
guidelines

For Your Information

Florida Disaster Division of Emergency Management

- Important New Deadlines
- Access the F-ROC Forms
- F-ROC Upcoming Key Milestones
- F-ROC Overview Video
- Upcoming Training Opportunities
- F-ROC in the Event of an Event
- Future of F-ROC
- FAQ
- Procurement Trainings





How Can I Stay Informed?



Have
feedback or
ideas?



Want to receive
updates?



Please send an email to F-ROC@em.myflorida.com



QUESTIONS?



FloridaDisaster.org/FROC