



# Tropical Update



10:45 AM EDT

Saturday, September 2, 2023

## Idalia Recovery Weather

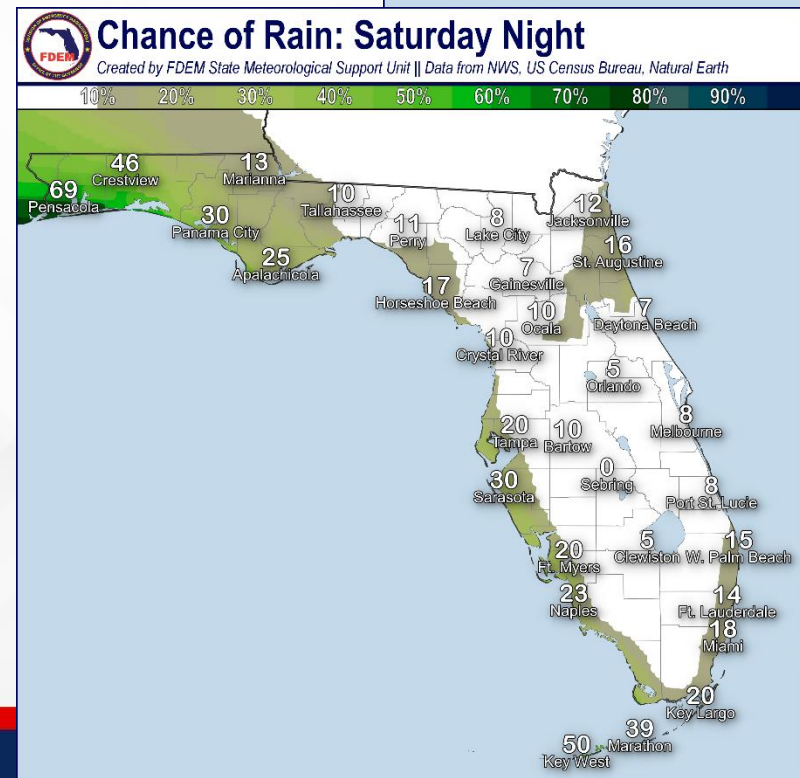
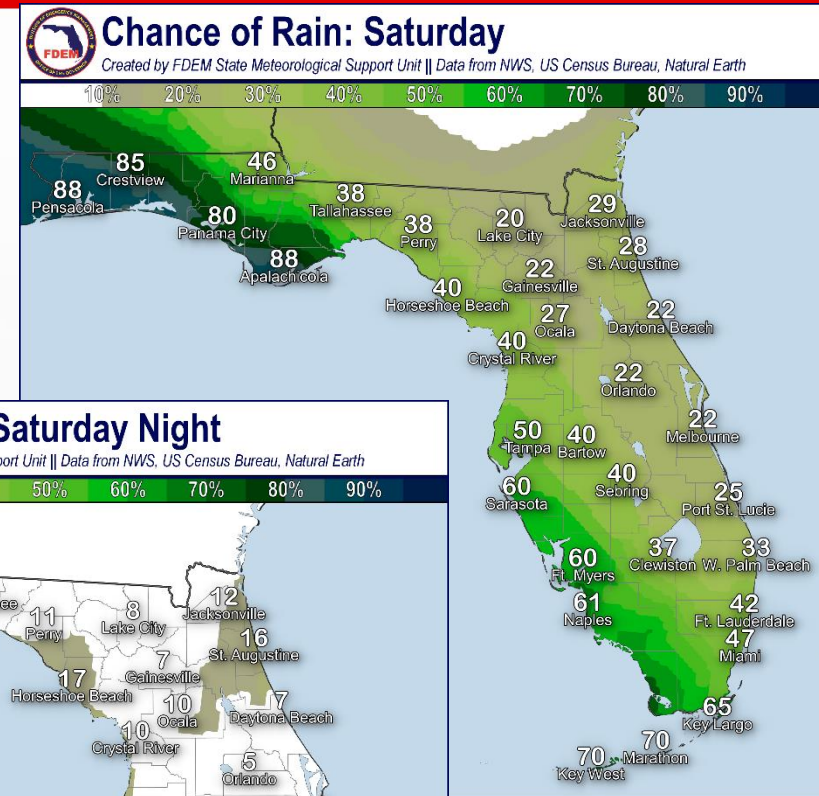
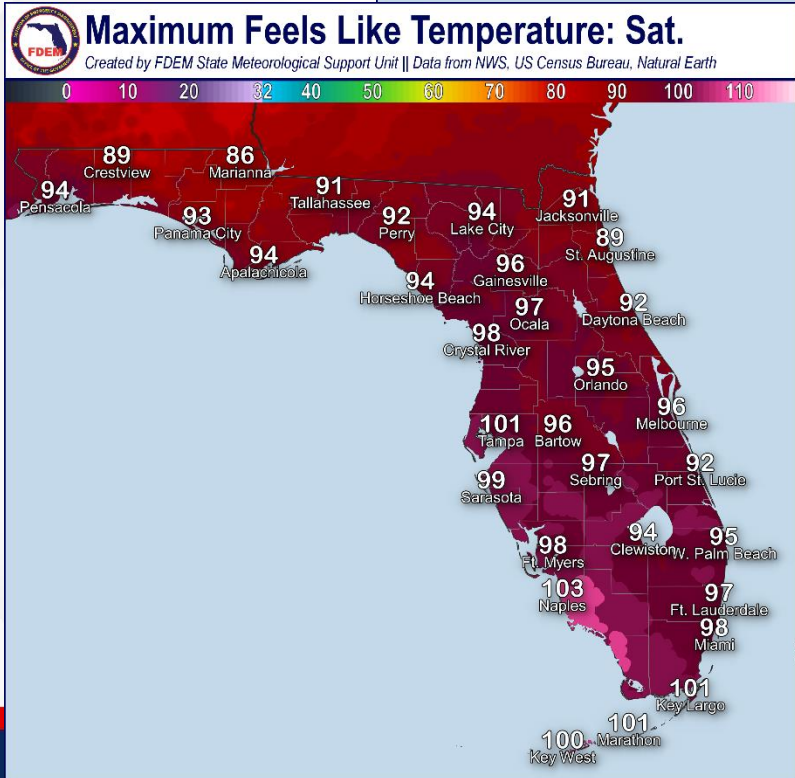
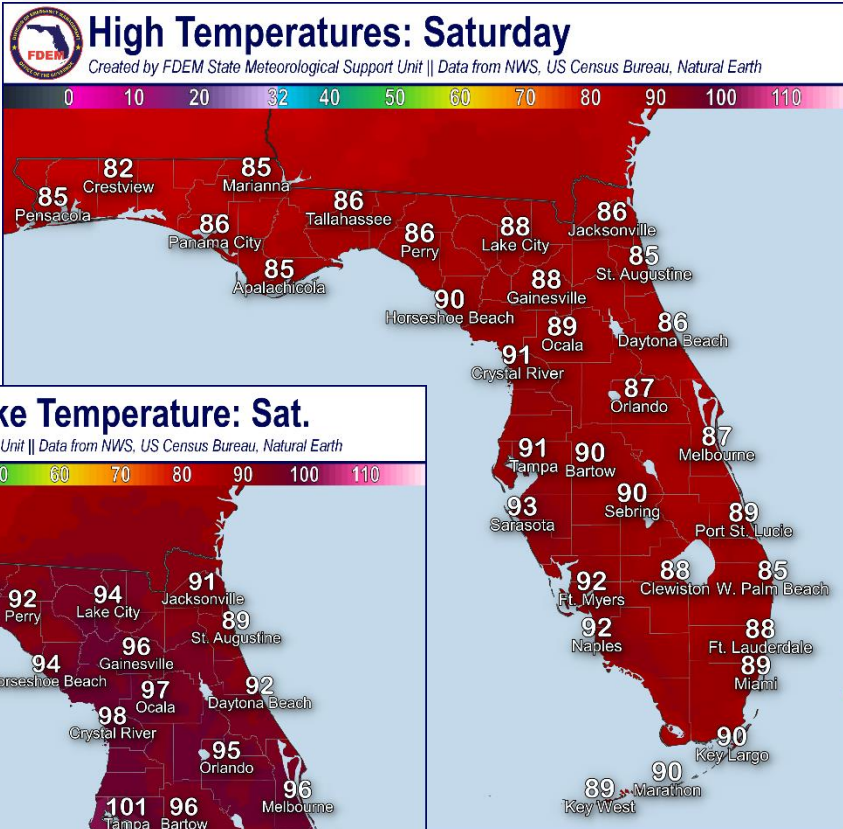
**Post-Tropical Cyclone Idalia, Tropical Storm Gert, Tropical Storm Katia, & Eastern and Central Tropical Atlantic**

This update is intended for government and emergency response officials, and is provided for informational and situational awareness purposes only. Forecast conditions are subject to change based on a variety of environmental factors. For additional information, or for any life safety concerns with an active weather event please contact your County Emergency Management or Public Safety Office, local National Weather Service forecast office, or visit the National Hurricane Center website at [www.hurricanes.gov](http://www.hurricanes.gov).



# Recovery Weather

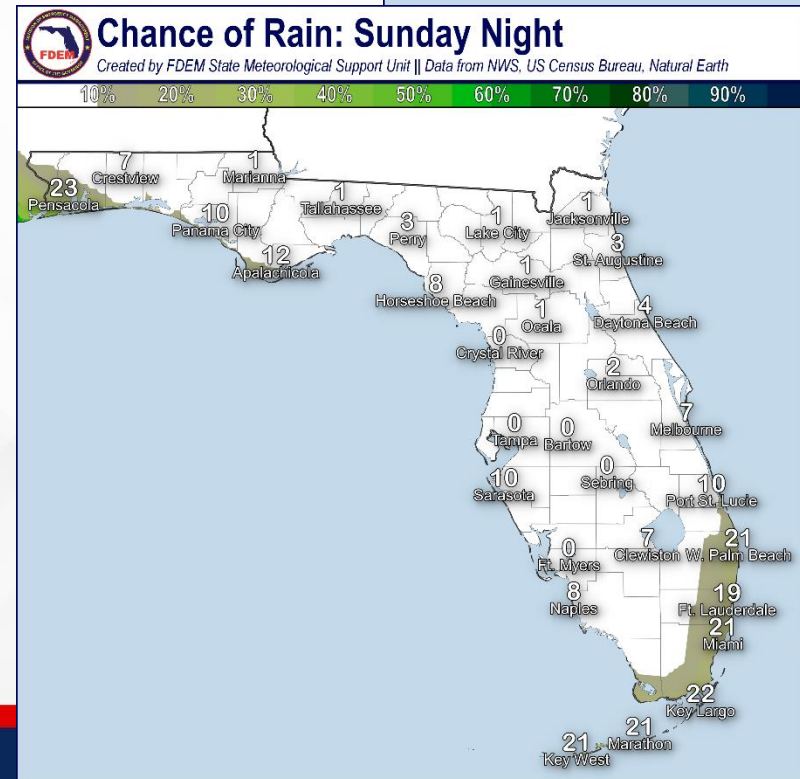
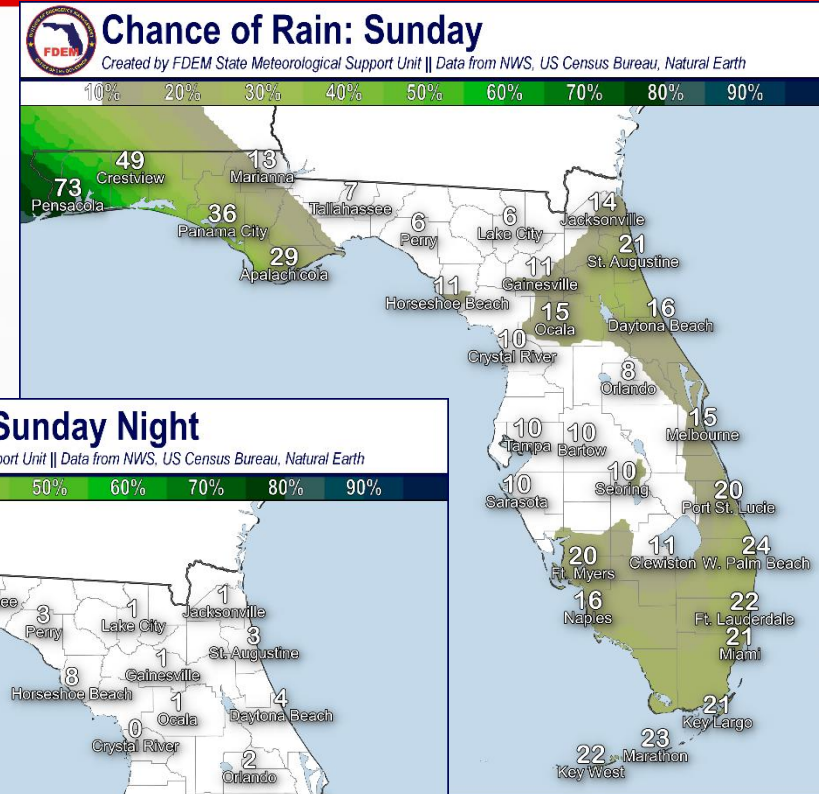
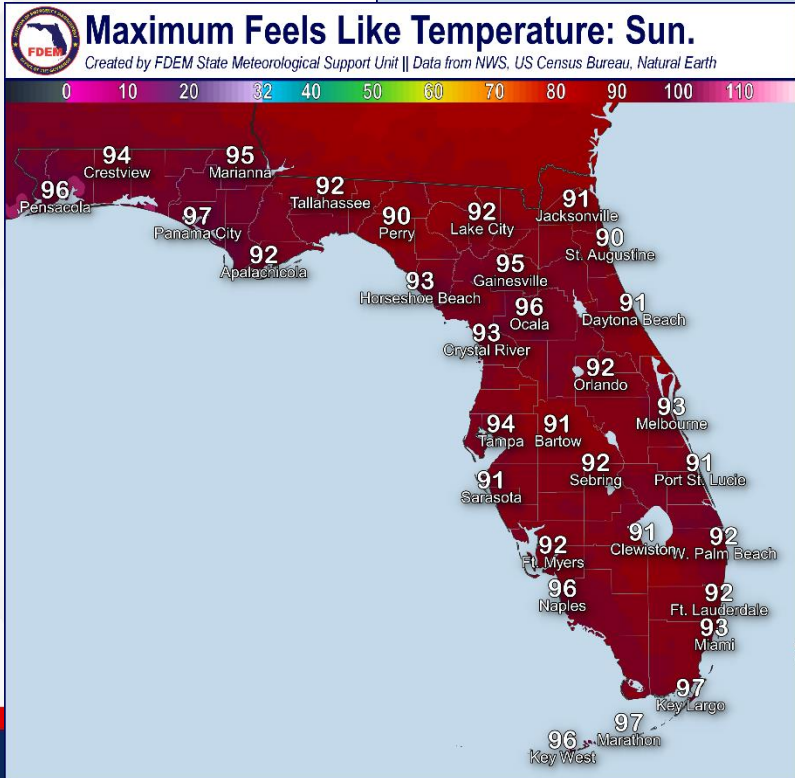
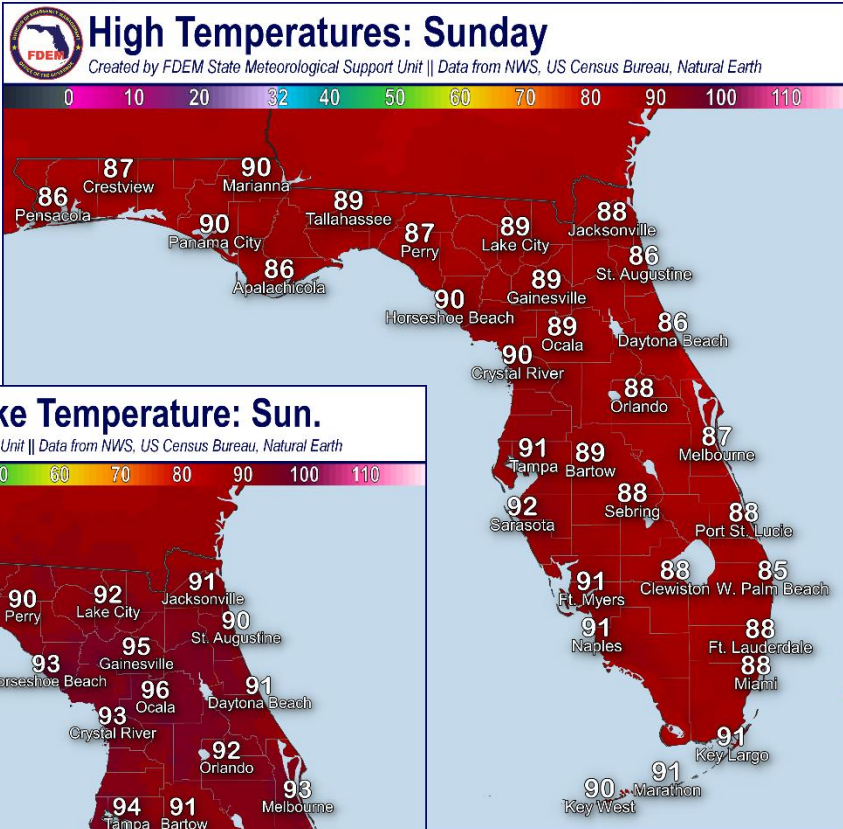
## Saturday





# Recovery Weather

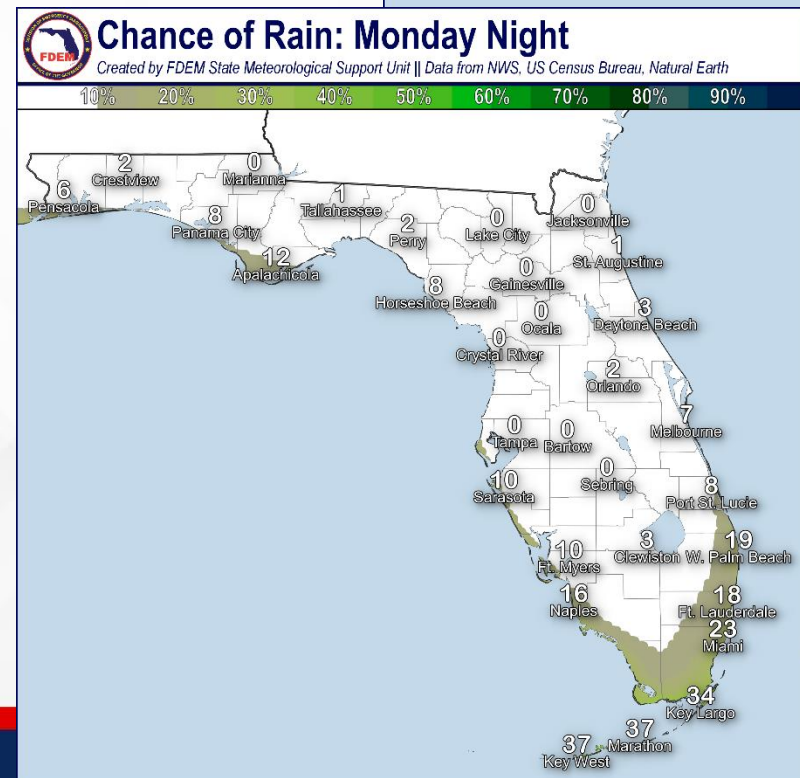
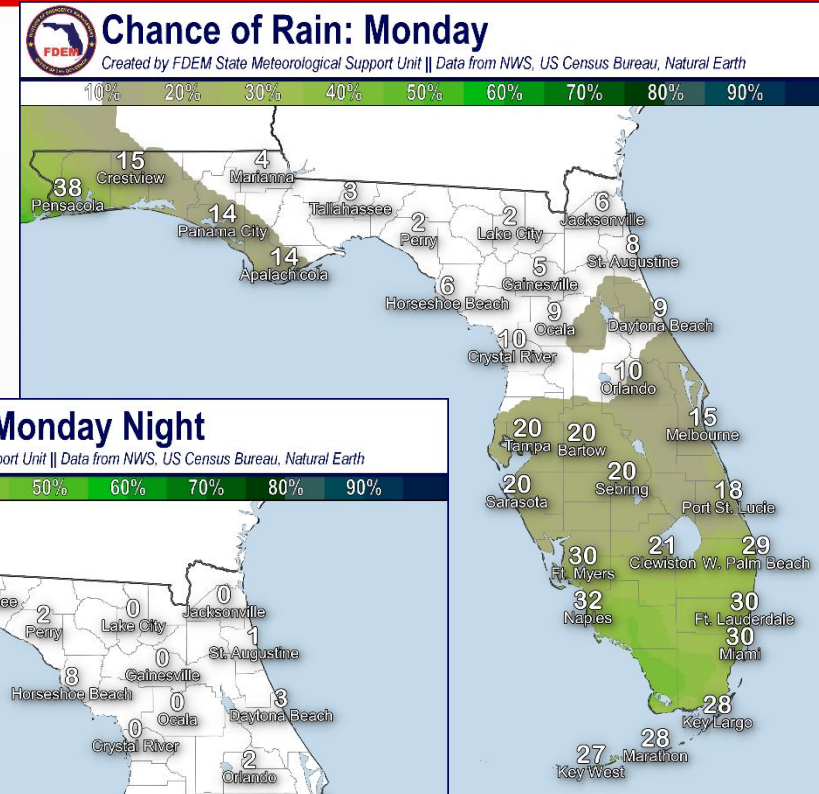
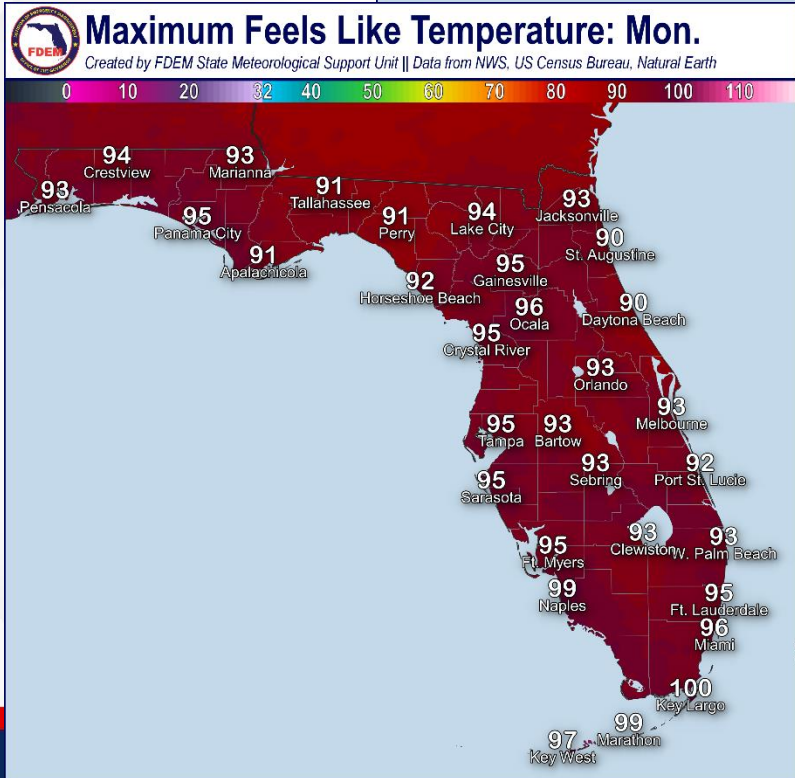
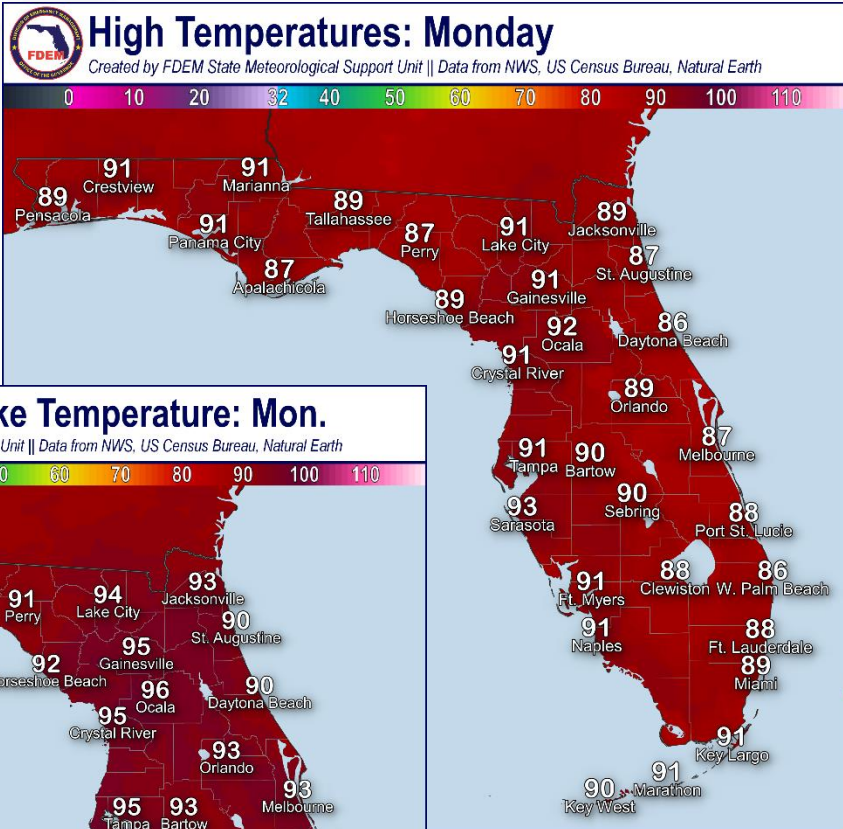
## Sunday





# Recovery Weather

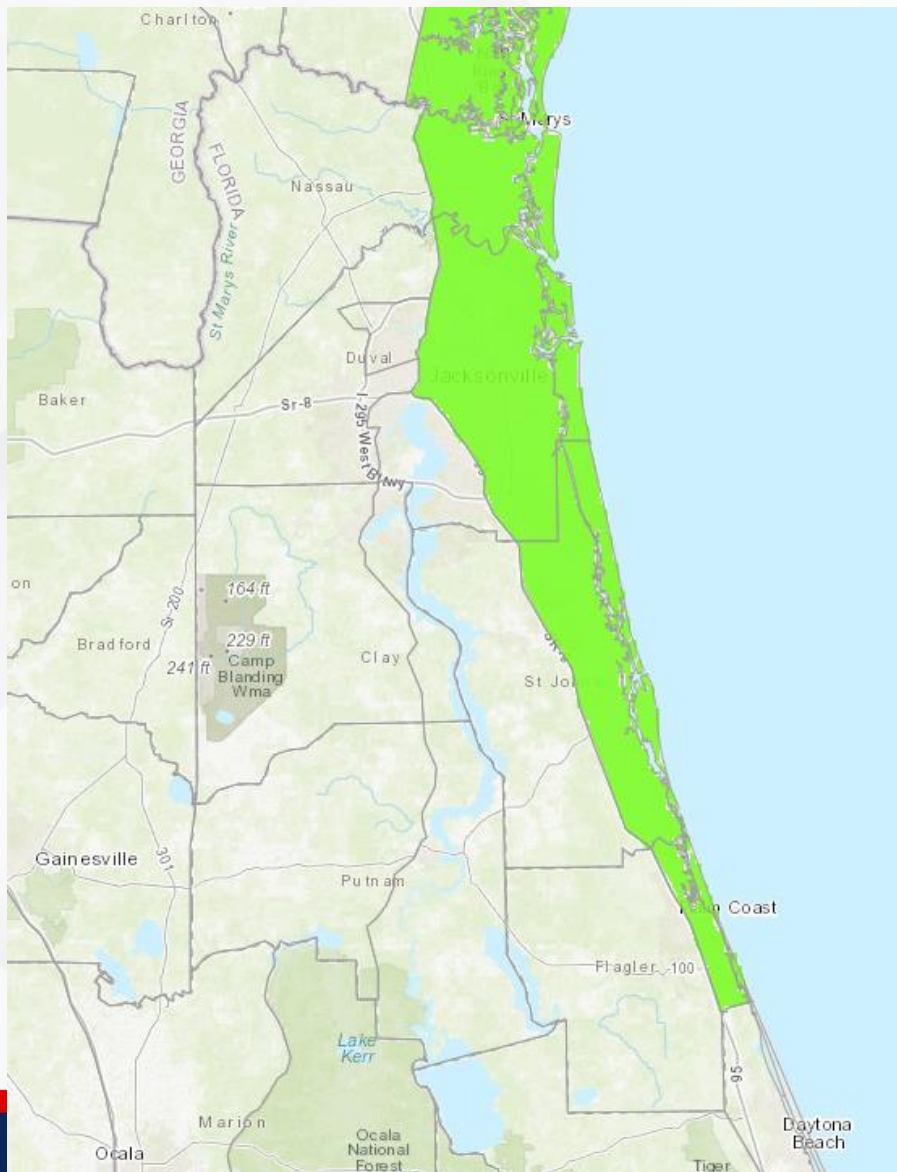
## Monday





# Coastal Flood Advisory

Until 2:00 PM EDT Saturday (9/2)



**Coastal Nassau**  
**Coastal Duval**  
**Coastal St. Johns**  
**Coastal Flagler**

Strengthening onshore flow will elevate tide along the Atlantic Coast and within the Lower St. Johns (*tidal portions of the river*) through Saturday morning's high tide cycle, at least. **Minor coastal flooding** will be possible along the Atlantic Coast beginning with tonight's high tide. Water levels of 2' above normally dry ground is anticipated along the coast.

## Times of High Tide:

*Mayport NAS – 10:56 AM EDT*

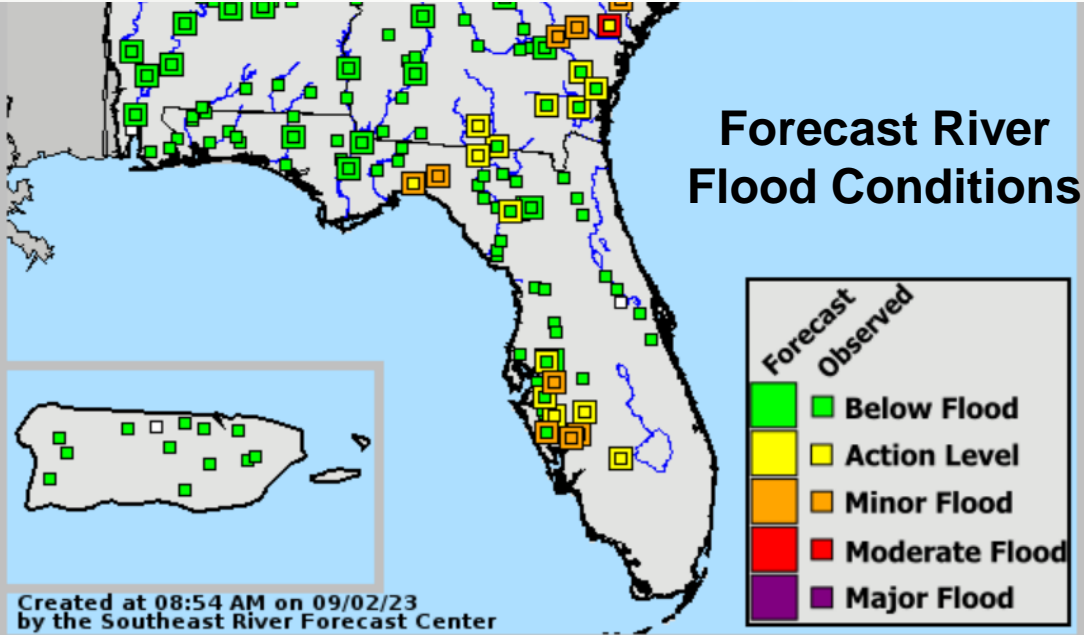
*Downtown Jacksonville (St. Johns) – 12:47 PM EDT*

*New Smyrna Beach – 11:21 AM EDT*

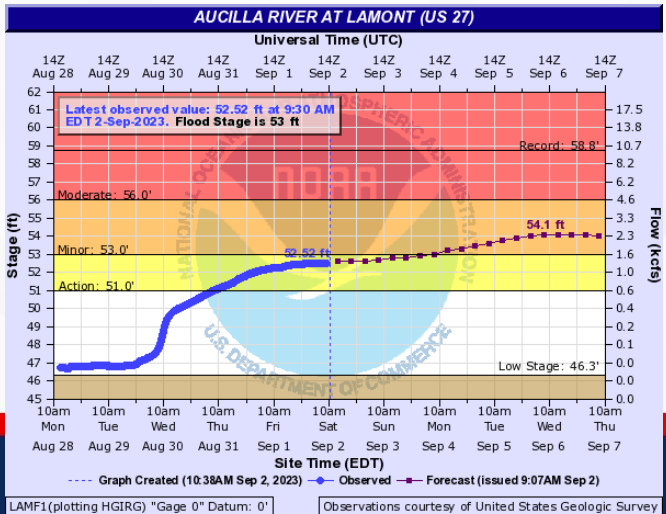
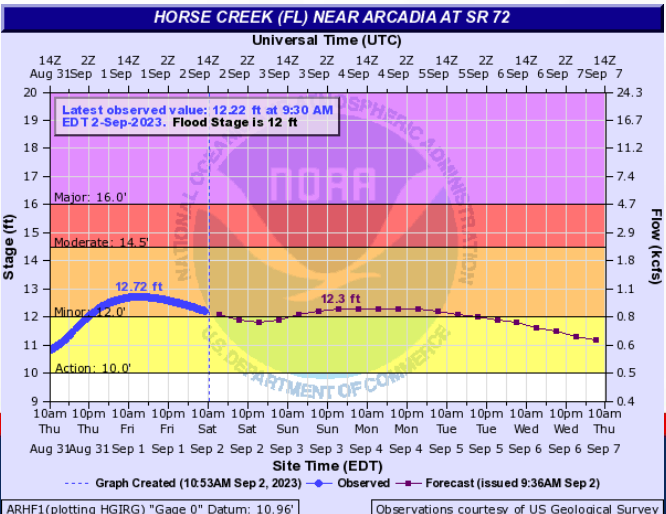
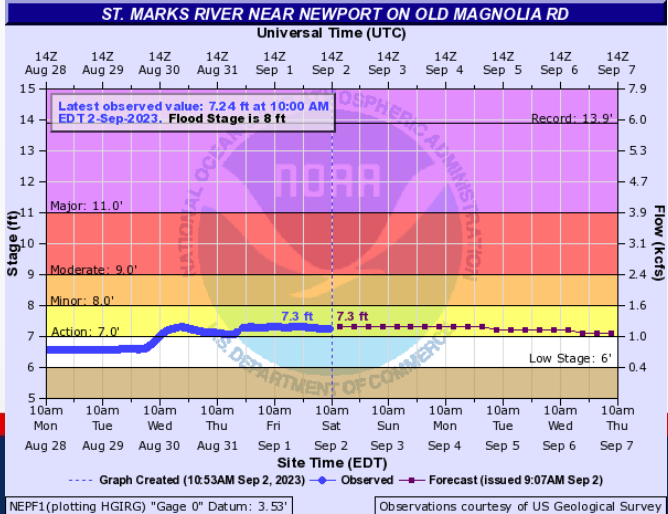


# Riverine Flooding

9:00 AM EDT Friday



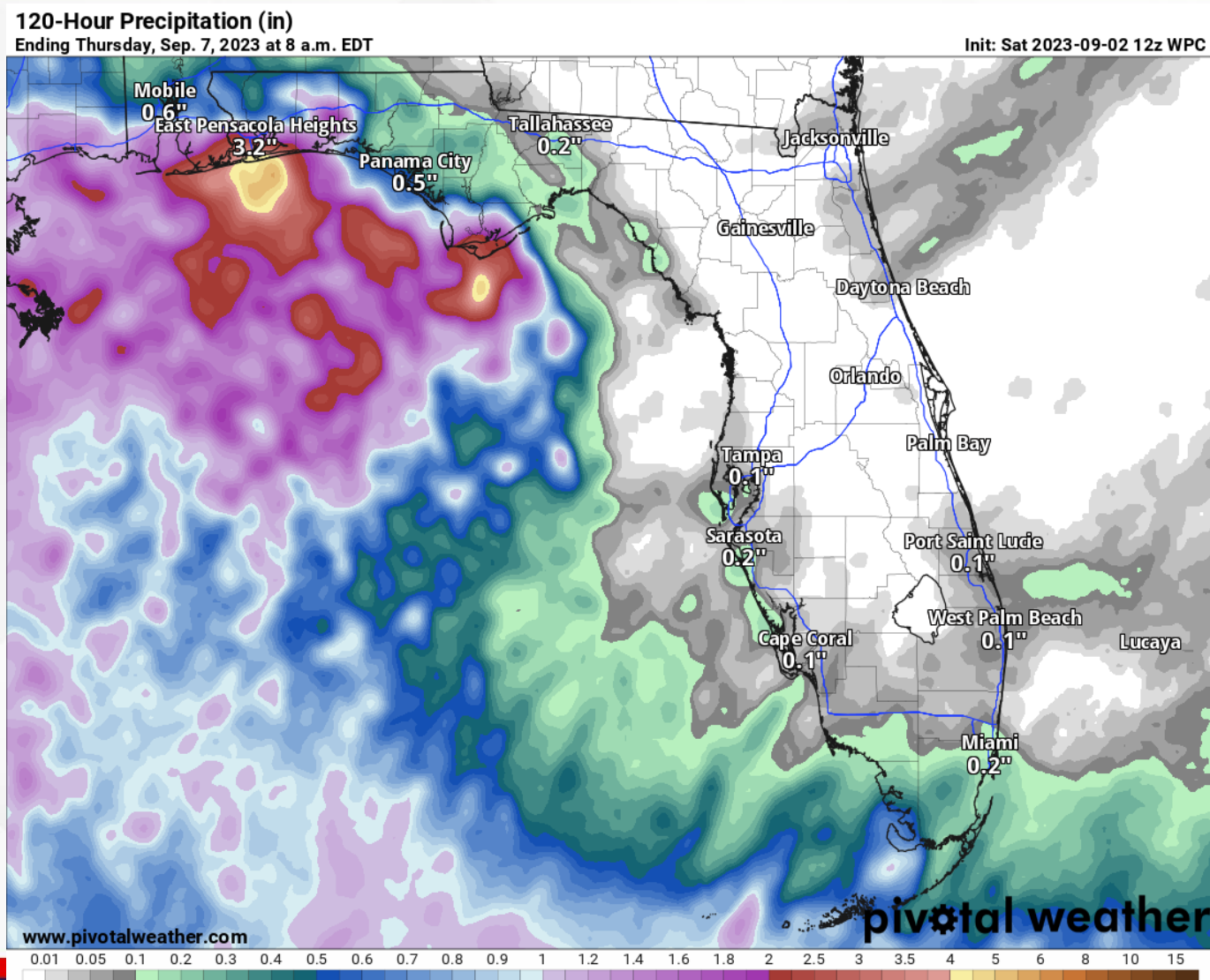
Heavy rainfall from Hurricane Idalia has resulted in a riverine response along several Florida Gulf Coast waterway. **Minor flooding** is forecast, and **River Flood Warnings** remain in effect for the [St. Marks River near Newport](#), [Aucilla River near Lamont](#), [Horse Creek near Arcadia](#), [Alafia River at Lithia](#), and the [Peace River at Arcadia](#).



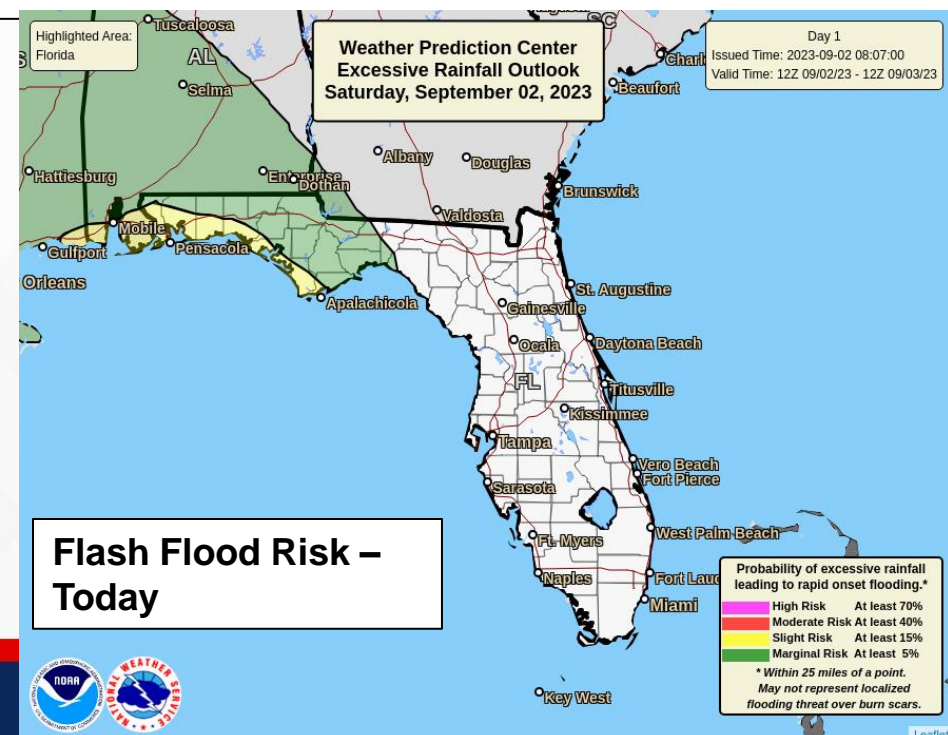


# 5-Day Forecast Rainfall

From the National Weather Service & Weather Prediction Center



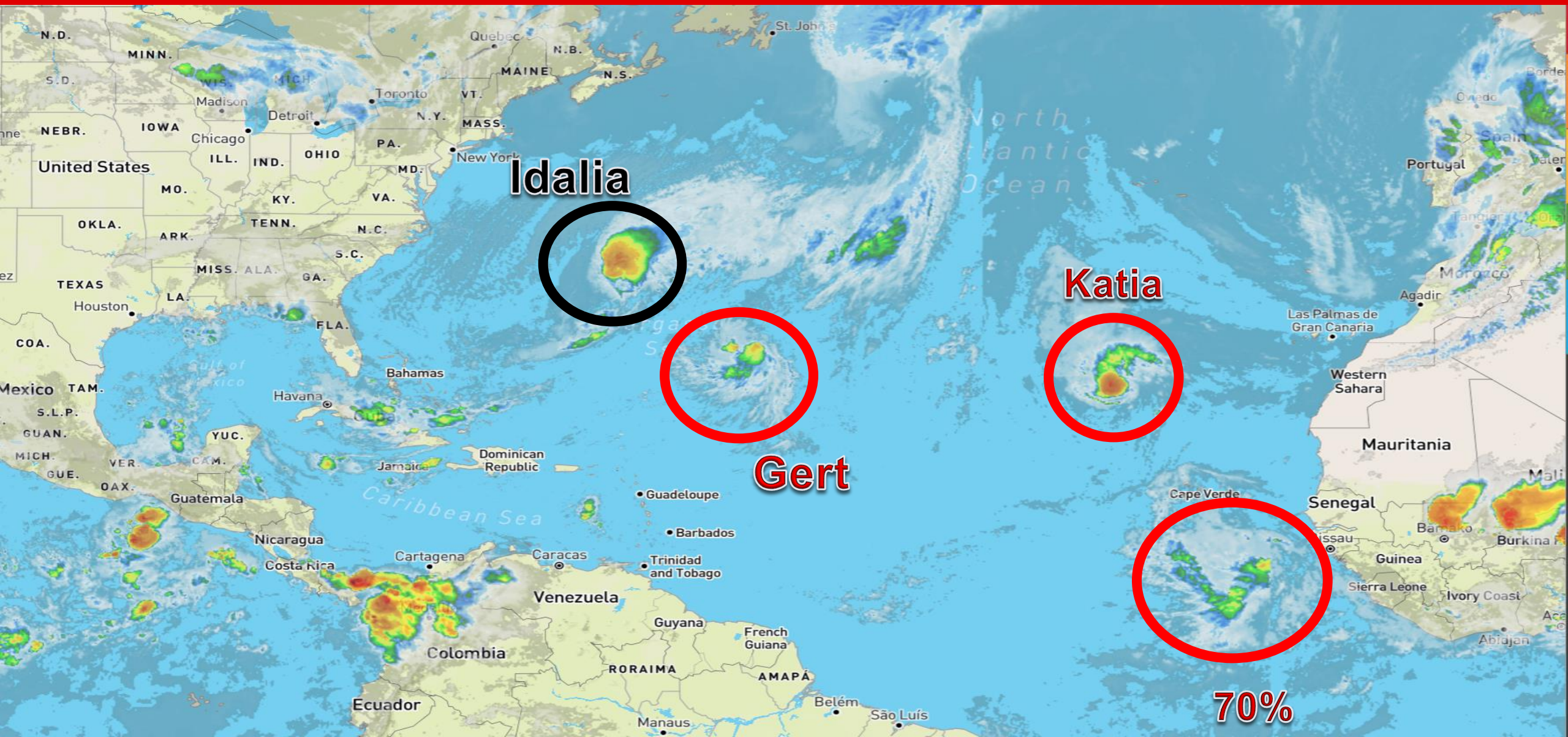
A frontal boundary pushing westward off West Florida will bring scattered showers and thunderstorms across the Panhandle and western Big Bend through today. Rainfall totals of 1-3" can be anticipated, with **locally higher totals** upwards of 3-4" possible. The Weather Prediction Center (WPC) is outlooking a **Slight Risk (level 2 of 4) for Flash Flooding** along the coastal Panhandle today as abundant moisture will give way to heavy and intense downpours. Drier air will filter in behind the passing frontal boundary, keeping rain chances limited to the coastlines each afternoon.





# Atlantic Basin Satellite Image

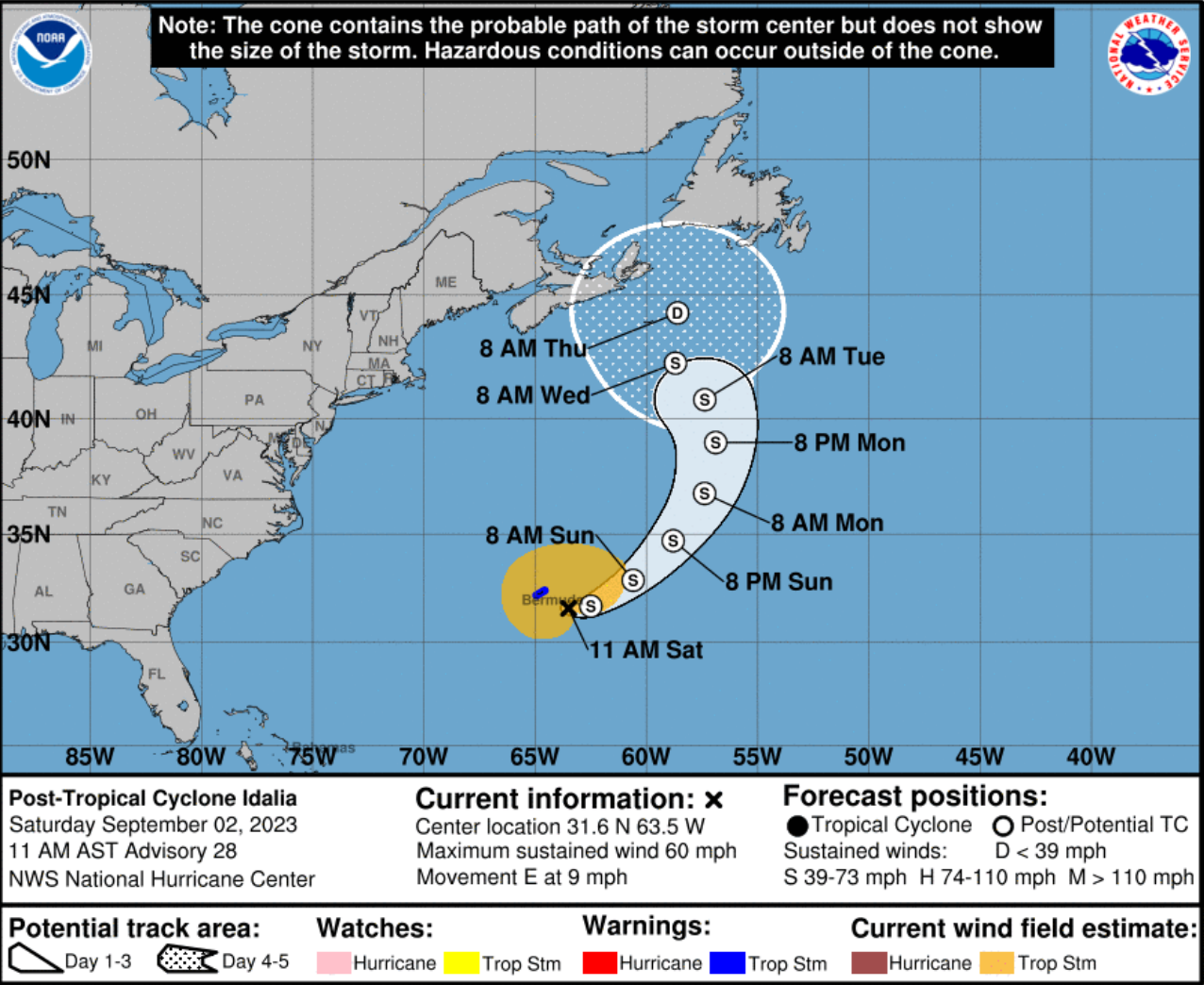
Chance of development:    None    Low    Medium    High





# Forecast Cone

## Post-Tropical Cyclone Idalia ([LINK](#))

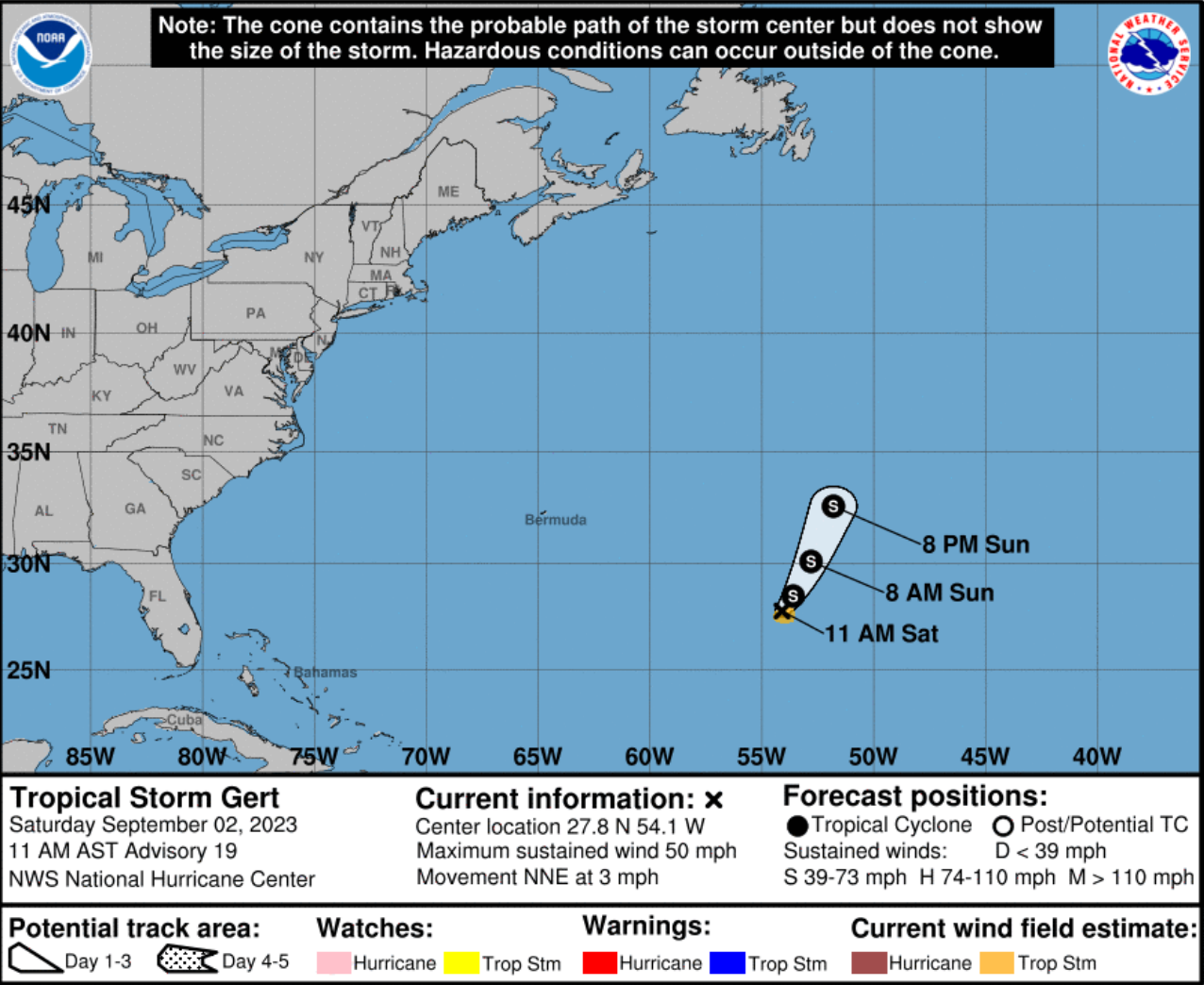


- **Location:** 55 miles SSE of Bermuda
  - **Maximum Sustained Winds:** 60 mph
  - **Current Movement:** ESE at 6 mph
- Idalia is moving toward the east-southeast at 6 mph, and this general motion is expected to continue through today. A faster northeastward motion is forecast to begin Sunday and should continue into Monday. Little change in strength is forecast during the next few days. Idalia could transition to a subtropical storm later today.
- Idalia poses no direct threat to Florida; however, an elevated risk of rip currents can be expected to persist through the day along the Northeast Florida Coast.*



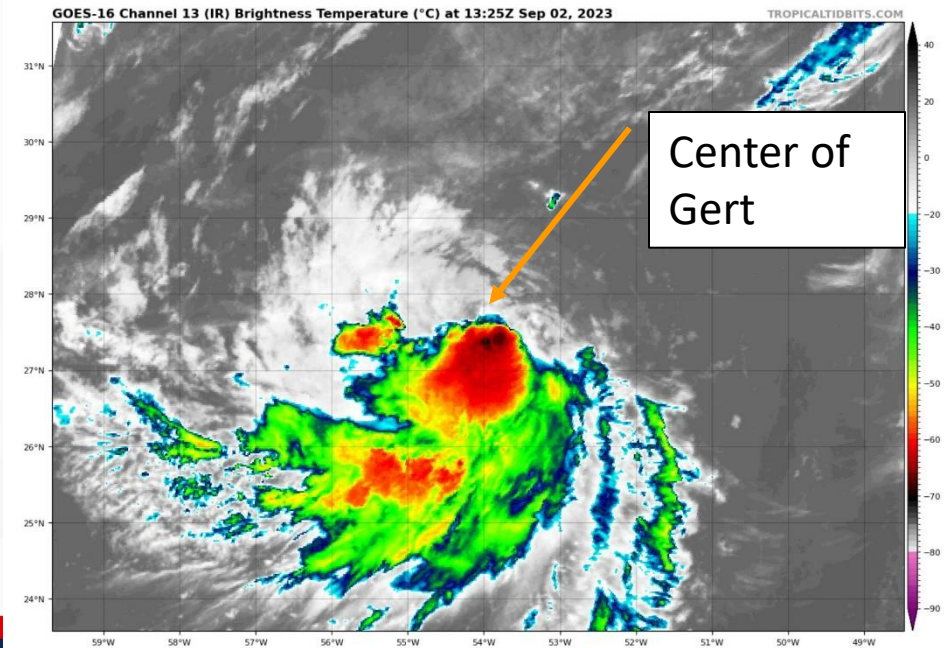
# Forecast Cone

## Tropical Storm Gert ([LINK](#))



- **Location:** 705 miles ESE of Bermuda
- **Maximum Sustained Winds:** 45 mph
- **Current Movement:** NE at 2 mph
- **FL Watches/Warnings:** None

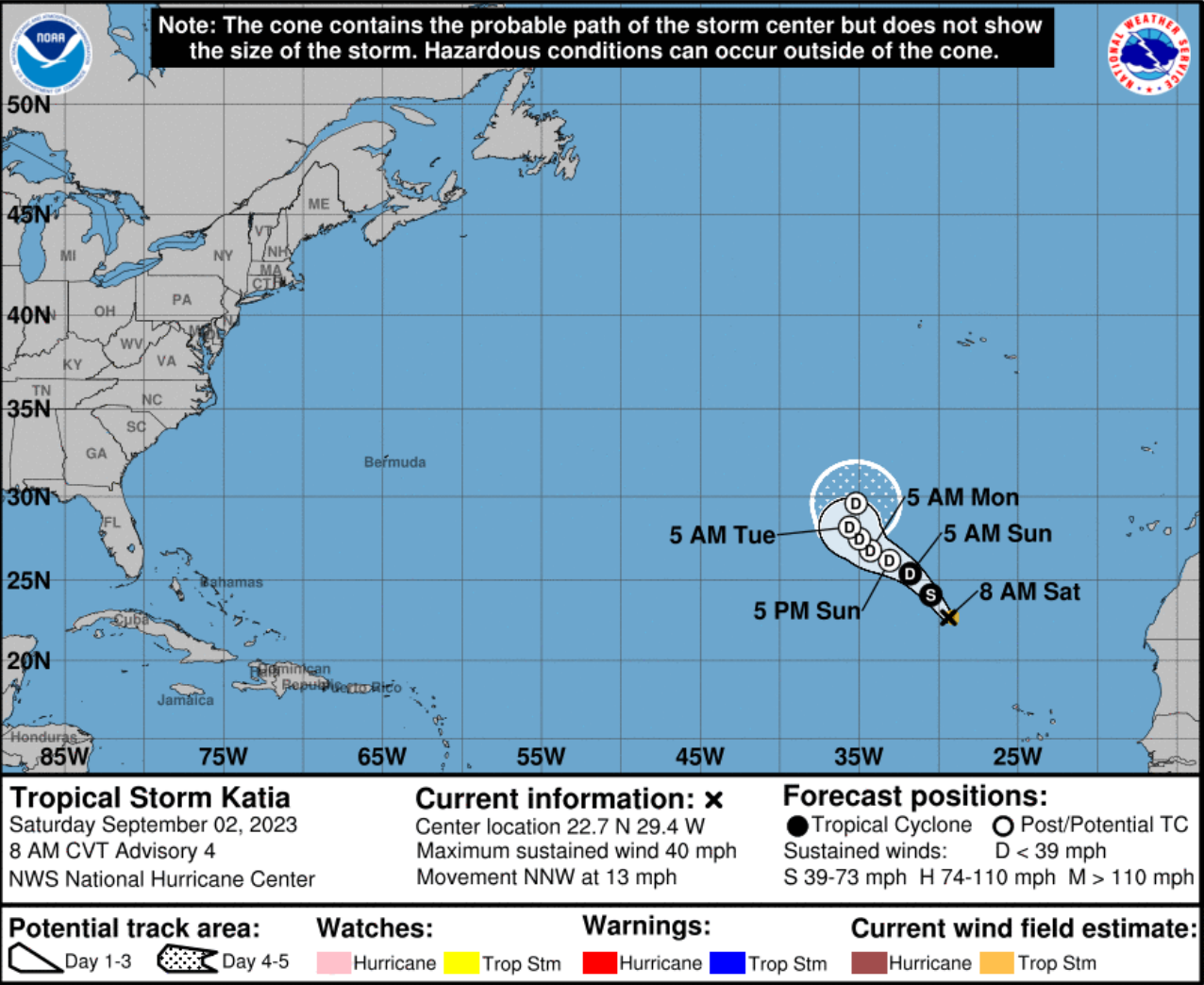
A northward motion is expected to continue to begin today and continue into Sunday. Little change in strength is forecast before Gert becomes absorbed by larger Post-Tropical Cyclone Idalia on Monday. *Gert poses no threat to Florida.*





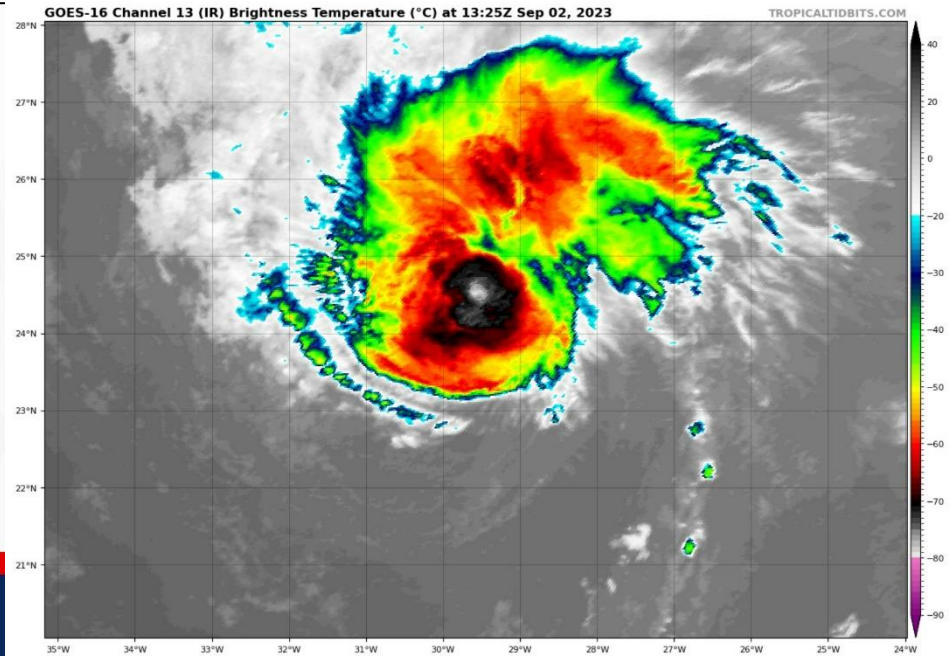
# Forecast Cone

## Tropical Storm Katia ([LINK](#))



- **Location:** 630 miles NW of Cabo Verde Islands
- **Maximum Sustained Winds:** 50 mph
- **Current Movement:** NNW at 13 mph
- **FL Watches/Warnings:** None

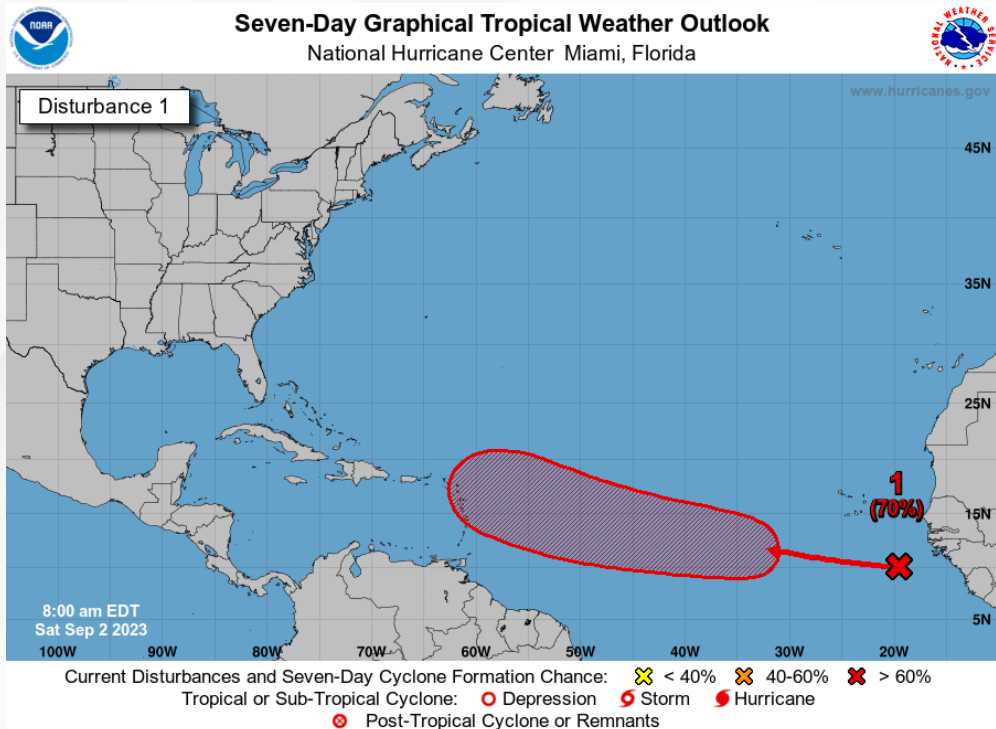
A turn towards the northwest is expected today. This general motion with a decrease in forward speed is expected through Monday. Weakening is expected to begin by early Sunday, and the system could degenerate into a remnant low by Sunday evening. *Katia poses no threat to Florida.*





# Tropical Weather Outlook

Disturbance 1 – Eastern & Central Atlantic ([LINK](#))



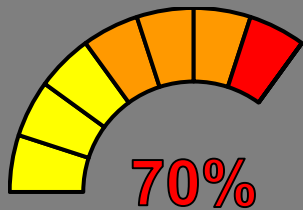
A tropical wave over the far eastern tropical Atlantic is producing disorganized showers and thunderstorms to the south-southeast of the Cabo Verde Islands. Environmental conditions appear conducive for some gradual development of this system by the middle part of next week. A tropical depression is likely to form while it moves westward to west-northwestward at 15-20 mph over the eastern and central portions of the tropical Atlantic.

*This system poses no direct threat to Florida over the next 10 days at least.*

- \* Formation chance through 48 hours...**low...20%.**
- \* Formation chance through 7 days...**high...70%.**



48 Hour Formation

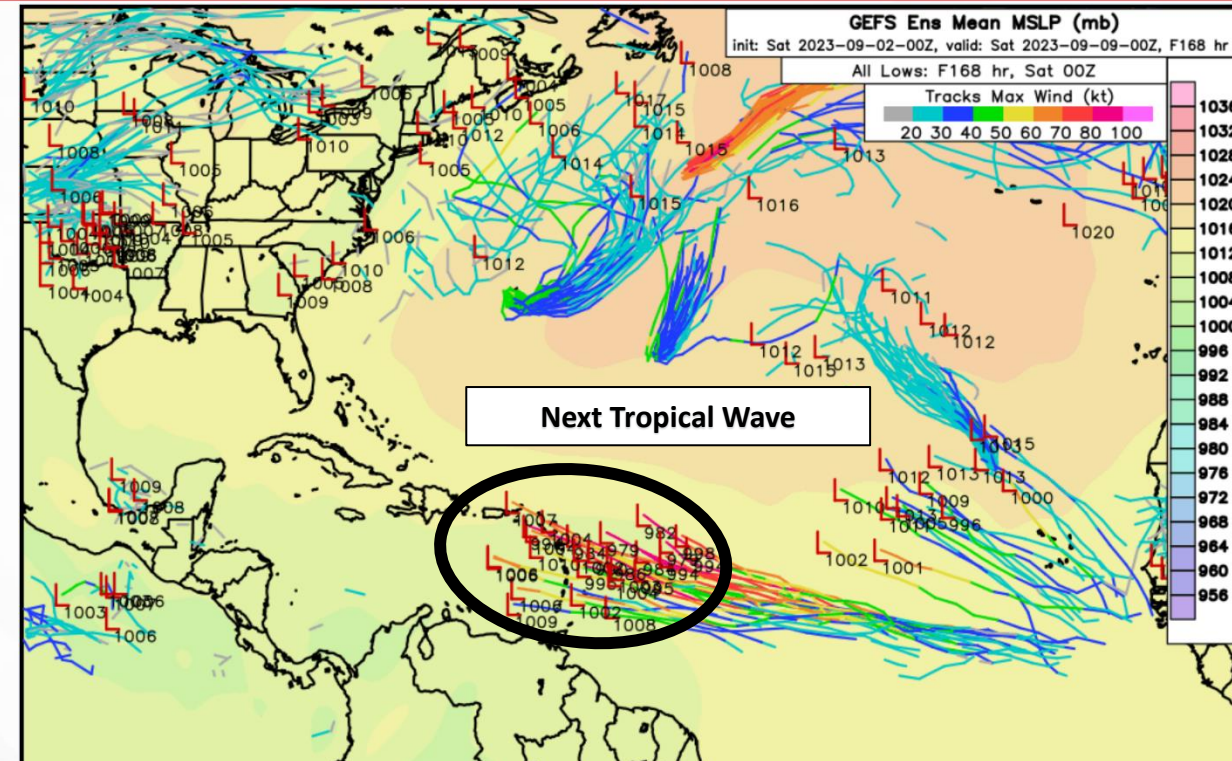
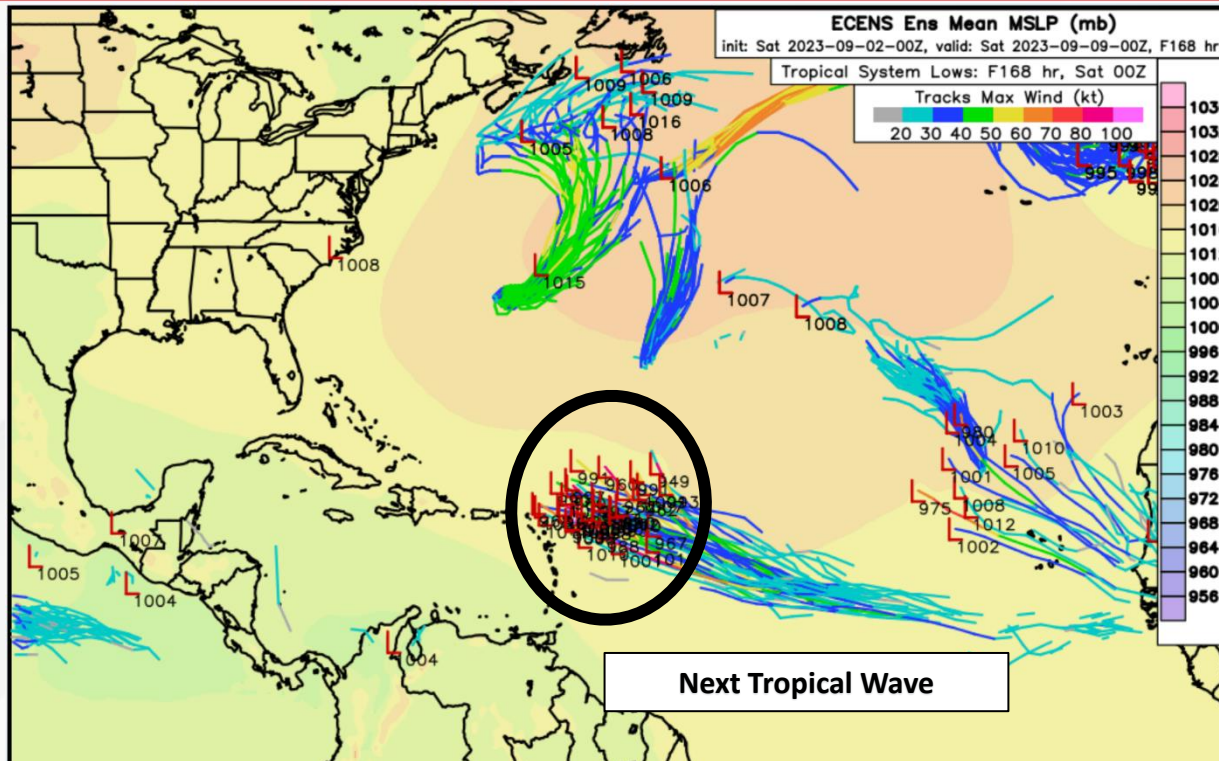


7 Day Formation



# Model Forecasts – Next 7 Days

## Atlantic Basin



Computer models are hinting at the next tropical wave emerging off the west coast of Africa this weekend, and advancing westward to west-northwestward over the eastern and central tropical Atlantic through the middle of next week. Environmental and atmospheric conditions appear conducive to support organization of this system; however, there remains disagreement within the computer model guidance regarding the overall evolution of this tropical wave including exact position and timing of the developing area of low pressure. Trends in the computer models will continue to be monitored through the weekend and early next week, as the tropical wave feature moves through the eastern tropical Atlantic.



# Summary

## **Post-Tropical Cyclone Idalia:**

- As of 8:00 AM EDT, Post-Tropical Cyclone Idalia is located about 55 miles south-southeast of Bermuda and is moving east-southeastward at 6 mph.
- A faster northeastward motion is forecast to begin Sunday and continue into Monday. On the forecast track, Idalia will remain near Bermuda today, and begin to move away from the island tonight and Sunday.
- Maximum sustained winds are near 60 mph and little change in strength is forecast during the next few days. Idalia could transition to a subtropical storm later today.
- *Idalia poses no direct threat to Florida; however, long-period ocean swells and an elevated risk for rip currents can be anticipated along Florida Northeast Coast beaches.*

## **Tropical Storm Gert:**

- As of 5:00 AM EDT, Tropical Storm Gert is located about 705 miles east-southeast of Bermuda, and is moving northeastward at 2 mph.
- A northward motion is expected to begin today and continue into Sunday.
- Little change in strength in strength is forecast before Gert becomes absorbed by larger Post-Tropical Idalia on Monday.
- *Gert poses no threat to Florida.*

## **Tropical Storm Katia:**

- As of 8:40 AM EDT, Tropical Storm Katia is located about 630 miles northwest of the Cabo Verde Islands and is moving north-northwestward at 13 mph.
- A turn toward the northwest is expected today and this general motion with a decrease in forward speed is expected through Monday.
- Maximum sustained winds are near 50 mph and weakening is expected to begin by early Sunday. The system could degenerate into a remnant low by Sunday evening.
- *Katia poses no threat to Florida.*

## **East and Central Tropical Atlantic Wave:**

- A tropical wave is located over the far eastern tropical Atlantic and is producing disorganized shower and thunderstorm activity south-southeast of the Cabo Verde Islands
- Environmental conditions appear favorable for some gradual development of this system by the middle part of next week, and a tropical depression is likely to form while it moves westward to west-northwestward over portions of the eastern and central tropical Atlantic.
- There is a 70% (high) chance of development over the next 7 days. *This system poses no threat to Florida over the next 10 days, at least.*
- The next name on the list is Lee.

The next briefing package will be issued on Sunday. For the latest information, please visit the [National Hurricane Center website](#).



# Summary

## Florida Outlook:

- A lingering frontal boundary remains draped along the Panhandle and northern Gulf of Mexico, creating scattered showers and thunderstorms this morning and afternoon along the Panhandle and Big Bend (50-90% chance of rain).
- The frontal boundary will begin to push westward to southwestward later today and into tonight across the Peninsula, allowing for isolated to scattered showers and thunderstorms this afternoon along West Florida (40-70% chance of rain).
- The Weather Prediction Center (WPC) is outlooking a Slight Risk (level 2 of 4) for Flash Flooding along the coastal Panhandle on Saturday as abundant moisture within showers and thunderstorms will create rainfall totals of 1-3", with locally higher totals upwards of 4-5", leading to instances of localized flash flooding at times. A Marginal Risk (level 1 of 4) for Flash Flooding extends to the far western Big Bend.
- A Flood Watch is in effect until Sunday morning along the Panhandle as additional rainfall today over saturated grounds could lead to instances of localized flash flooding.
- Drier air will begin to filter in behind the frontal boundary courtesy of high pressure building along the eastern U.S. through the weekend.
- Temperatures in the middle to upper 80s and low 90s can be expected statewide through the weekend.
- Heat index values, or feels-like temperatures, have fallen below triple digits across most of the state. Portions of West-Central and Southwest Florida can expect heat index values near 100-103.
- River Flood Warnings continue for the Alafia River at Lithia, Horse Creek near Arcadia, Peace River near Arcadia, Aucilla River at Lamont, and St. Marks near Newport as minor flooding is forecast or ongoing due to recent rainfall from Hurricane Idalia.

The next briefing package will be issued on Sunday. For the latest information, please visit the [National Hurricane Center website](#).



# Tropical Update



Created by:

**Kennedy Tartt, Assistant State Meteorologist**

**[Kennedy.Tartt@em.myflorida.com](mailto:Kennedy.Tartt@em.myflorida.com)**

**State Meteorological Support Unit**

**Florida Division of Emergency Management**

Users wishing to subscribe (approval pending) to this distribution list, register at:

[https://public.govdelivery.com/accounts/FLDEM/subscriber/new?topic\\_id=SERT\\_Met\\_Tropics](https://public.govdelivery.com/accounts/FLDEM/subscriber/new?topic_id=SERT_Met_Tropics).

Other reports available for subscription are available at:

<https://public.govdelivery.com/accounts/FLDEM/subscriber/new?preferences=true>