



Tropical Update



5:30 PM EDT

Tuesday, August 29, 2023

Hurricane Idalia

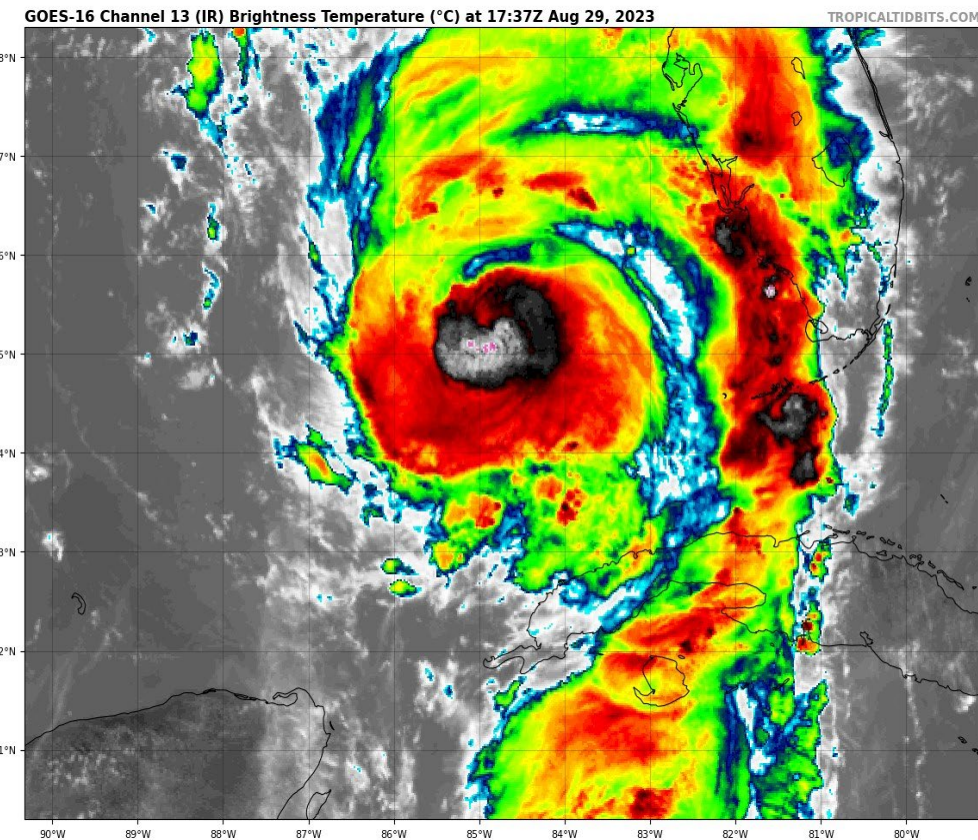
This update is intended for government and emergency response officials, and is provided for informational and situational awareness purposes only. Forecast conditions are subject to change based on a variety of environmental factors. For additional information, or for any life safety concerns with an active weather event please contact your County Emergency Management or Public Safety Office, local National Weather Service forecast office, or visit the National Hurricane Center website at www.hurricanes.gov.



Hurricane Idalia

5:30 PM EDT Tuesday: Florida Threats & Changes Since Last Packet

| | MINIMAL | Low | MODERATE | HIGH | EXTREME |
|---|---------|----------|----------|------|---------|
|  WINDS | | | | | |
|  STORM SURGE | | | | | |
|  FLASH FLOODING | | | | | |
|  TORNADOES | | | | | |
| | Low | MODERATE | HIGH | | |
|  RIP CURRENTS | | | | | |



Overview/Recent Changes:

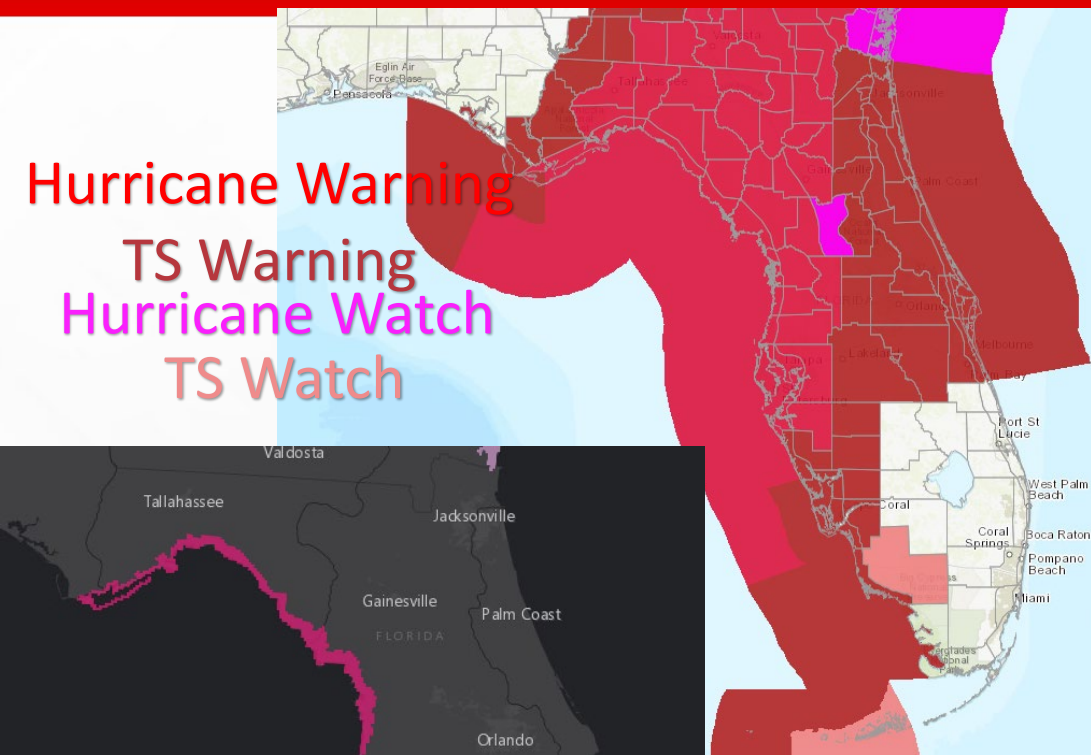
With the 2:00 PM update, Idalia has maximum sustained winds of 100 mph making it a Category 2 hurricane. The storm is currently located about 195 miles southwest of Tampa and about 300 miles south of Tallahassee. Additional strengthening is forecast, and Idalia is likely to become a major hurricane tonight before it reaches the Big Bend coast of Florida. Idalia will likely still be a hurricane while moving across southern Georgia, possibly when it reaches the coast of Georgia or southern South Carolina on Wednesday. Forecasted Storm Surge values have increased further westward along the Forgotten Coast.



Current Watches/Warnings

As of 5:00 PM EDT Tuesday

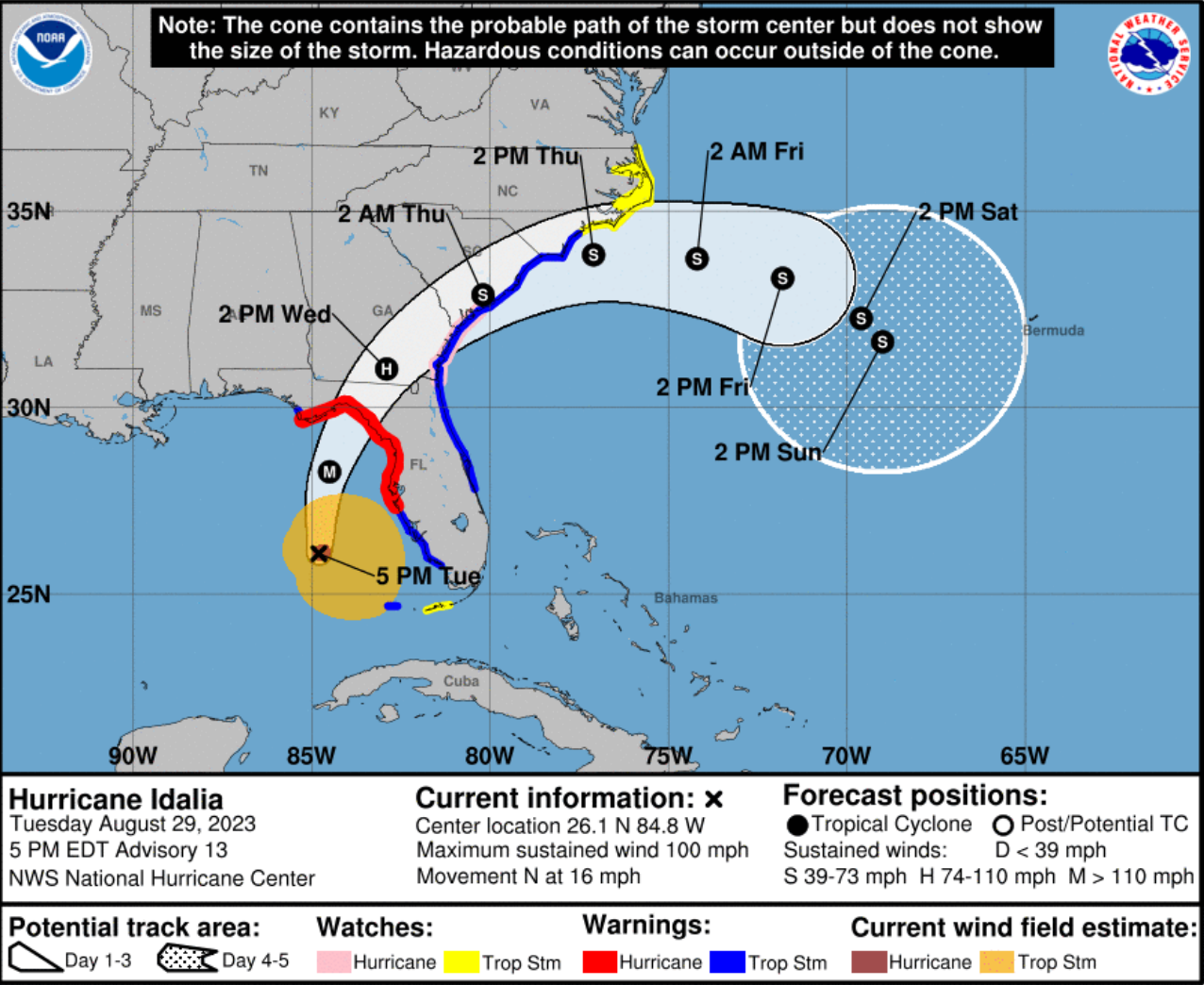
- **Hurricane Warning:**
 - Coastal Franklin, Wakulla, Jefferson, Madison, Taylor, Hamilton, Suwanee, Lafayette, Dixie, Columbia, Gilchrist, Levy, Alachua, western Marion, Citrus, Sumter, Hernando, Pasco, Hillsborough, Pinellas, Manatee, Leon, Baker, Bradford, Union
- **Hurricane Watch:**
 - central Marion
- **Tropical Storm Warning:**
 - Gulf, Liberty, Gadsden, Nassau, Duval, Union, Clay, St. Johns, Putnam, Flagler, central Marion, eastern Marion, Volusia, Lake, Seminole, Orange, Brevard, Osceola, Polk, Hardee, DeSoto, Sarasota, Charlotte, coastal Collier, Lee, Dry Tortugas
- **Tropical Storm Watch:**
 - Inland Collier and Lower Keys
- **Storm Surge Warning:**
 - Englewood northward (Charlotte/Sarasota border) to Indian Pass (Franklin/Gulf border), including Tampa Bay
- **Storm Surge Watch:**
 - Englewood (Charlotte/Sarasota border) to Bonita Beach (Collier/Lee border), including Charlotte Harbor





Forecast Cone

Hurricane Idalia ([LINK](#))



- **Location:** 195 miles SW of Tampa; 300 miles S of Tallahassee
- **Maximum Sustained Winds:** 100 mph; Category 2
- **Current Movement:** N at 16 mph
- **FL Watches/Warnings:**
 - **Hurricane Warning:** Big Bend, inland East Big Bend, coastal West Central Florida, Suwannee Valley
 - **Hurricane Watch:** Central Marion
 - **Tropical Storm Warning:** western Big Bend, Northeast Florida, East Central Florida, inland Central Florida, coastal Southwest Florida
 - **Tropical Storm Watch:** Lower Keys
- A northward to north-northeastward motion is expected tonight. On the forecast track, the center of Idalia is forecast to reach the Big Bend coast of Florida on Wednesday morning. After landfall, the center of Idalia is forecast to turn toward the northeast and east, moving near or along the coast of Georgia, South Carolina, and North Carolina late Wednesday and Thursday. Maximum sustained winds have now increased to 100 mph, making Idalia a Category 2 hurricane. Rapid intensification is likely through landfall, and Idalia is expected to become an extremely dangerous major hurricane before it reaches the Big Bend coast of Florida.

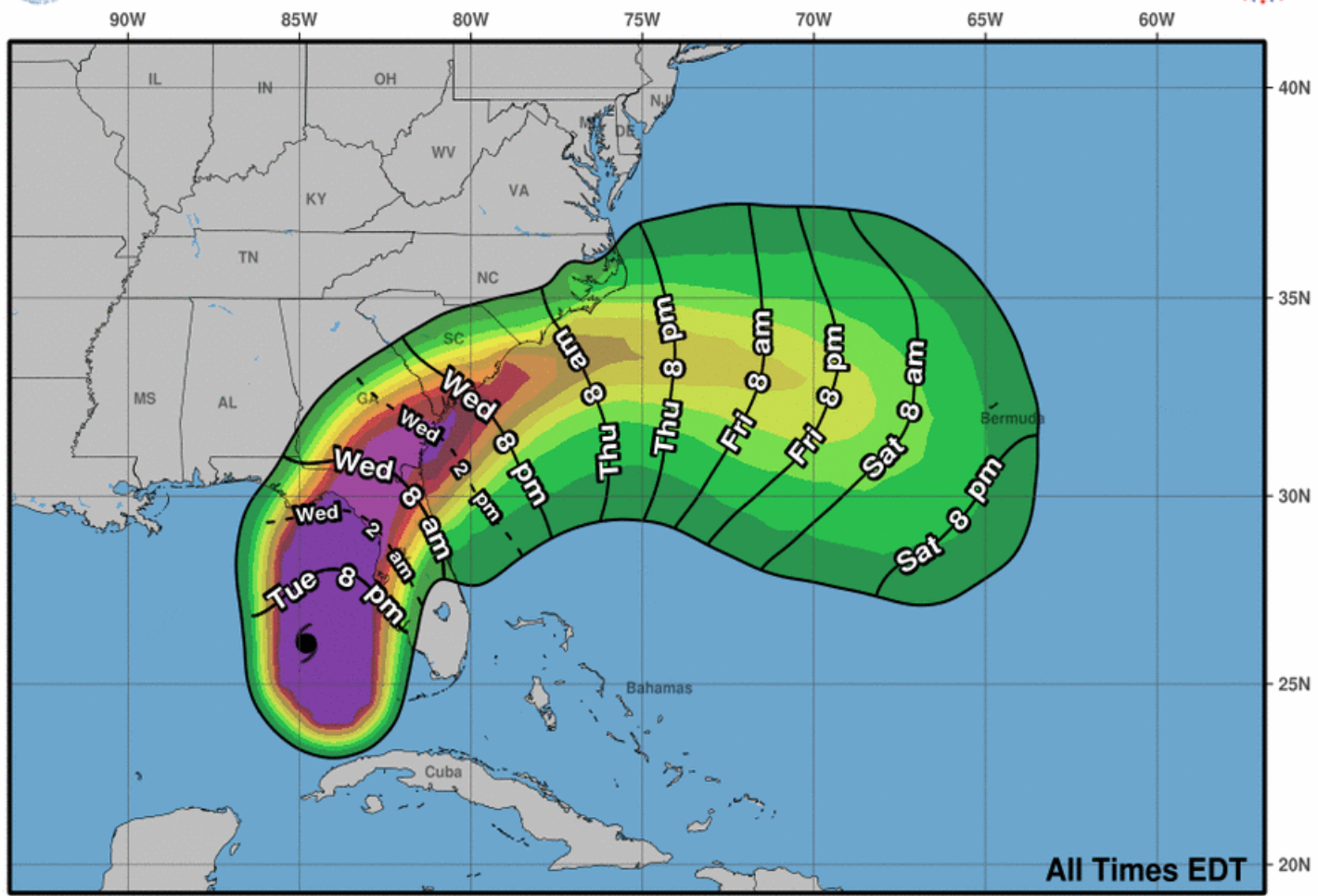


Tropical Storm-Force Wind Probabilities

Hurricane Idalia



Most Likely Arrival Time of Tropical-Storm-Force Winds



Hurricane Idalia
Tue. Aug. 29, 2023 5 pm EDT
Advisory 13

Storm Location & Wind Speed
○ < 34 kt (39 mph)
○ 34-63 kt (39-73 mph)
● ≥ 64 kt (74 mph)

5-day chance of receiving sustained 34+ kt (39+ mph) winds
5 10 20 30 40 50 60 70 80 90 100 %

- Key West – 5% (-12%)
- Naples – 28% (-16%)
- Tampa – 95% (+4%)
- Orlando – 32% (-1%)
- Cedar Key – 99% (+2%)
- Tallahassee – 63% (+10%)
- St. Marks – 76% (+11%)
- Apalachicola – 72% (+6%)
- Panama City – 37% (+2%)
- Jacksonville – 86% (+10%)

The numbers in parenthesis show the change in probability since the previous briefing packet.

Probabilities for tropical storm-force winds continue to increase along the Florida Big Bend, Nature Coast, and West-Central. Tropical impacts can be anticipated to begin as early as Tuesday morning along portions of the Southwest Florida and expanding northward throughout the day. The most likely timeframe for deteriorating conditions across the state will be Tuesday evening and overnight into Wednesday from south to north as Idalia continues to progress towards the Florida Gulf Coast. As Idalia pushes inland on Wednesday, deteriorating conditions will expand across the Suwannee River Valley and Northeast Florida.



Impact Threat

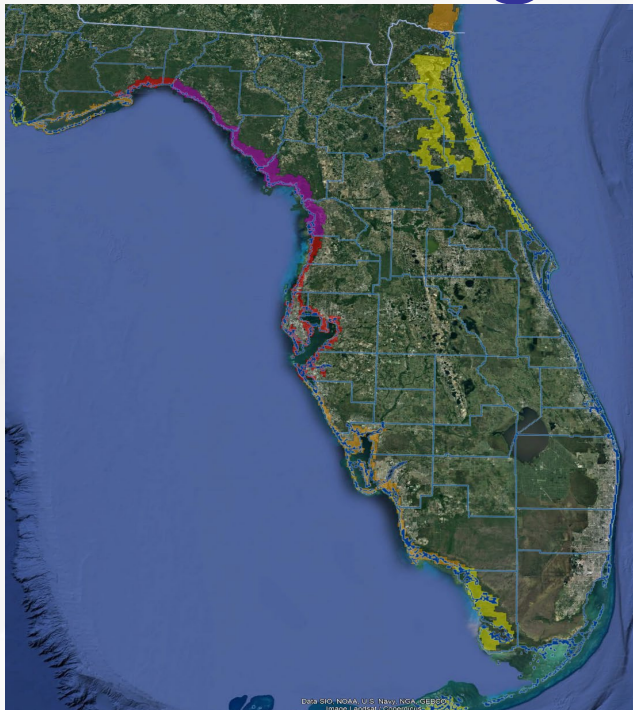
From the National Weather Service

Storm Surge

Wind

Flooding

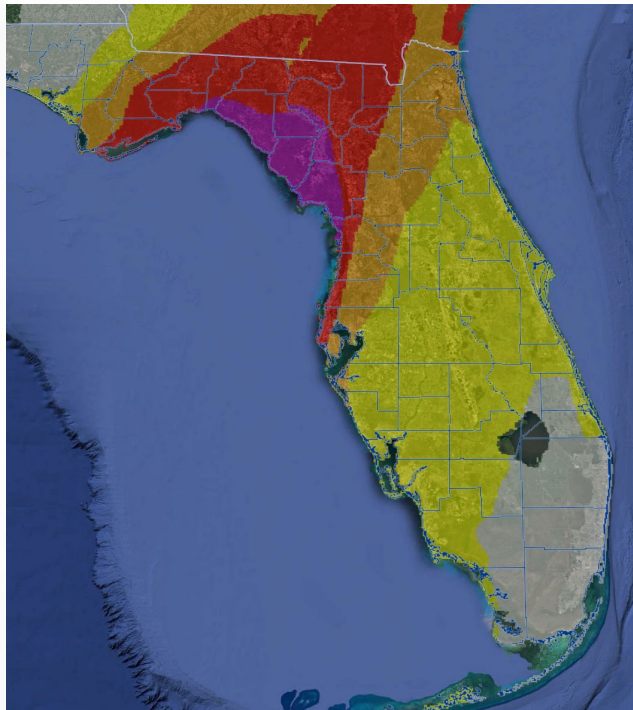
Tornadoes



- *Widespread deep inundation, powerful battering waves.
- *Structural damage to buildings
- *Locations may be uninhabitable for an extended period.
- *Near-shore escape routes and secondary roads washed out or severely flooded.
- *Massive damage to marinas, docks, boardwalks, and piers.
- *Numerous small craft broken away from moorings with many lifted onshore and stranded.

Storm Surge Threat

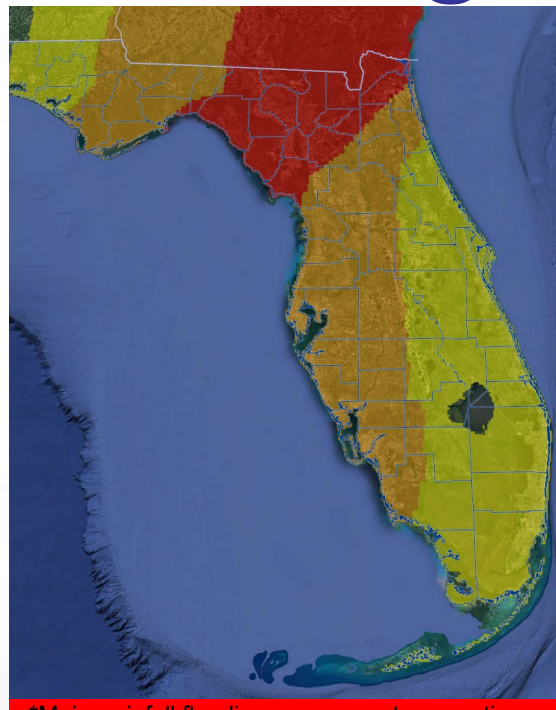
| |
|---|
| Potential for storm surge flooding greater than 9 ft above ground |
| Potential for storm surge flooding greater than 6 ft above ground |
| Potential for storm surge flooding greater than 3 ft above ground |
| Potential for storm surge flooding greater than 1 ft above ground |
| Little to no storm surge flooding |



- *Structural damage to buildings, some with complete roof and wall failures.
- *Complete destruction of mobile homes.
- *Locations may be uninhabitable for weeks or months.
- *Numerous large trees snapped or uprooted.
- *Many roads impassable from large debris,
- *Widespread power and communications outages.

Wind Threat

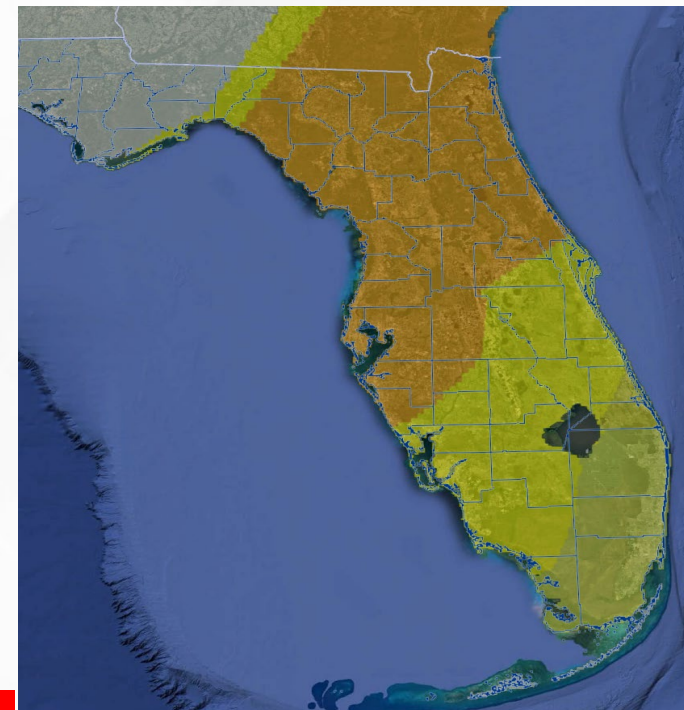
| |
|---|
| Potential for wind greater than 110 mph |
| Potential for wind 74 to 110 mph |
| Potential for wind 58 to 73 mph |
| Potential for wind 39 to 57 mph |
| Wind less than 39 mph |



- *Major rainfall flooding may prompt evacuations and rescues.
- *Rivers and tributaries may rapidly overflow their banks in multiple places. Small streams, creeks, canals, and ditches may become dangerous rivers.
- *Many road and bridge closures with some weakened or washed out.

Flooding Rain Threat

| |
|--|
| Potential for extreme flooding rain |
| Potential for major flooding rain |
| Potential for moderate flooding rain |
| Potential for localized flooding rain |
| Little to no potential for flooding rain |



- *Scattered tornadoes can hinder the execution of emergency plans.
- *Spots of considerable damage, power loss, and communications failures.
- *Locations could realize roofs torn off, mobile homes demolished, large trees snapped or uprooted, vehicles tumbled, and boats tossed about.

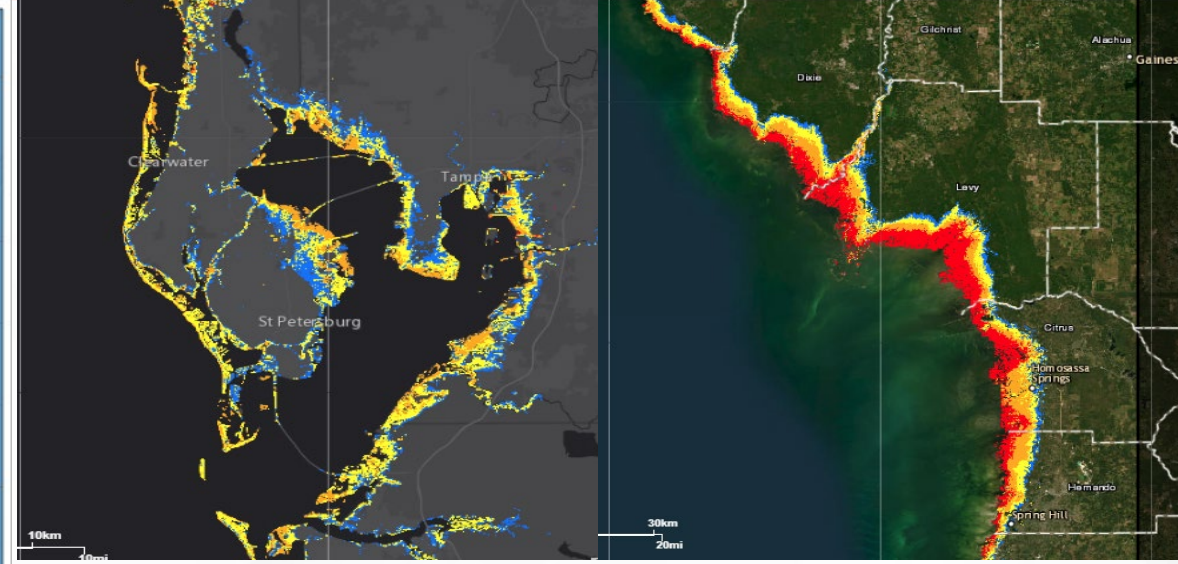
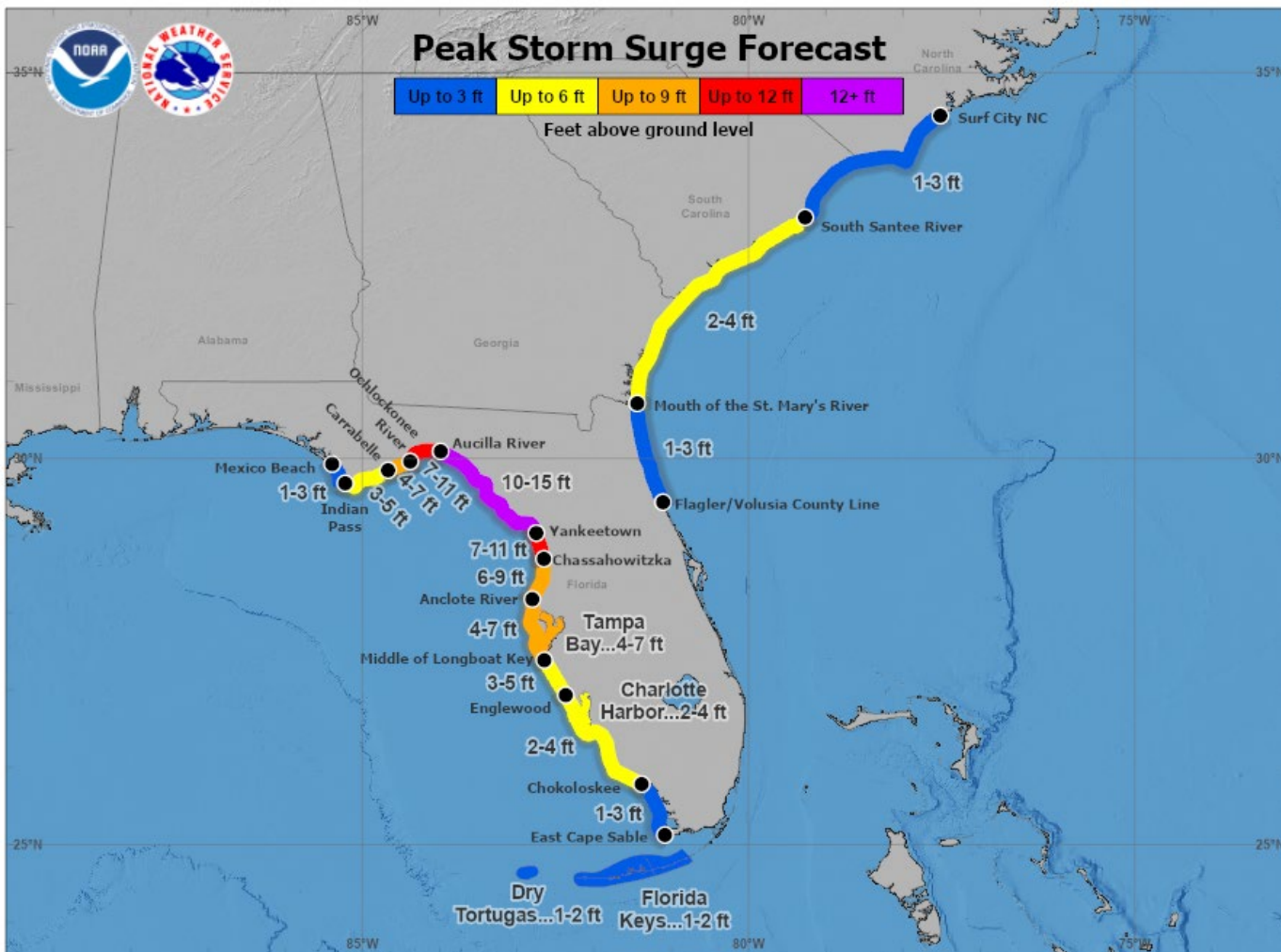
Tornado Threat

| |
|-------------------------------------|
| Potential for outbreak of tornadoes |
| Potential for many tornadoes |
| Potential for several tornadoes |
| Potential for a few tornadoes |
| Tornadoes not expected |



Expected Storm Surge Values

From the National Hurricane Center



Peak storm surge will be greatest along the eastern Forgotten Coast and Nature Coast with 10-15' from the Aucilla River to Yankeetown and 7-11' from Yankeetown to Chassahowitzka and from the Ocklockonee River to the Aucilla River. 6-9' is expected from Chassahowitzka to the Anclote River. 4-7' is forecast for Carrabelle to the Ochlockonee River and from the Aclote River to the Middle of Longboat Key. Storm surge is also forecast along the Florida Gulf Coast from the Middle of Longboat Key to East Cape Sable, along the Big Bend and Panhandle from Carrabelle to Mexico Beach, along the Northeast coast from the Mouth of the St. Mary's River to the Flagler/Volusia County line, and the Florida Keys.

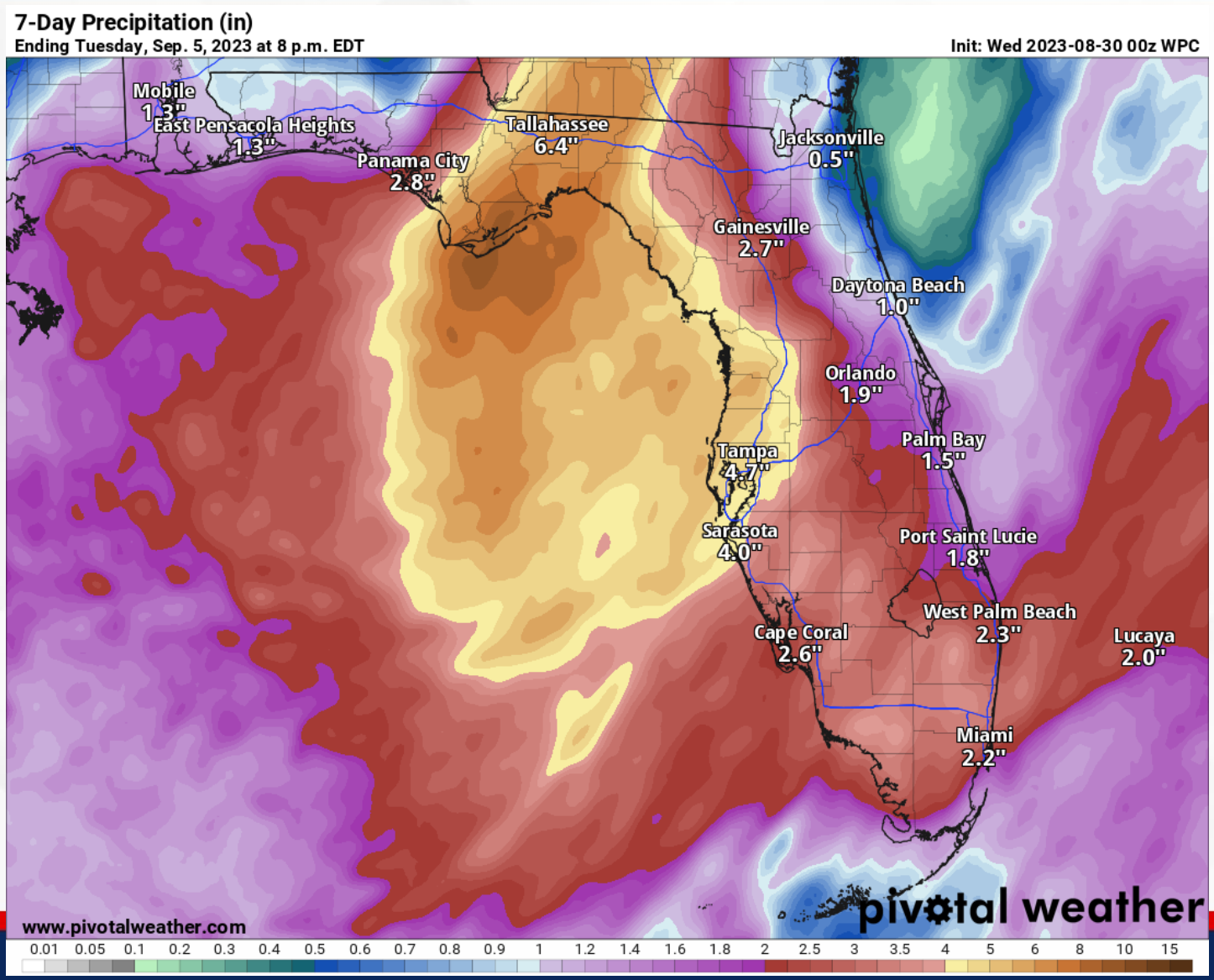
Hurricane Idalia
Tuesday August 29, 2023
02 PM EDT Advisory 12A
NWS National Hurricane Center

User Notes: Water levels along the immediate coast could reach the following heights above ground level within the indicated areas. Elevated water levels will likely be accompanied by large and destructive waves. Colors are determined by the highest values in the associated forecast peak surge range. Values shown on this graphic are inclusive of tide.



7-Day Forecast Rainfall

From the National Weather Service & Weather Prediction Center

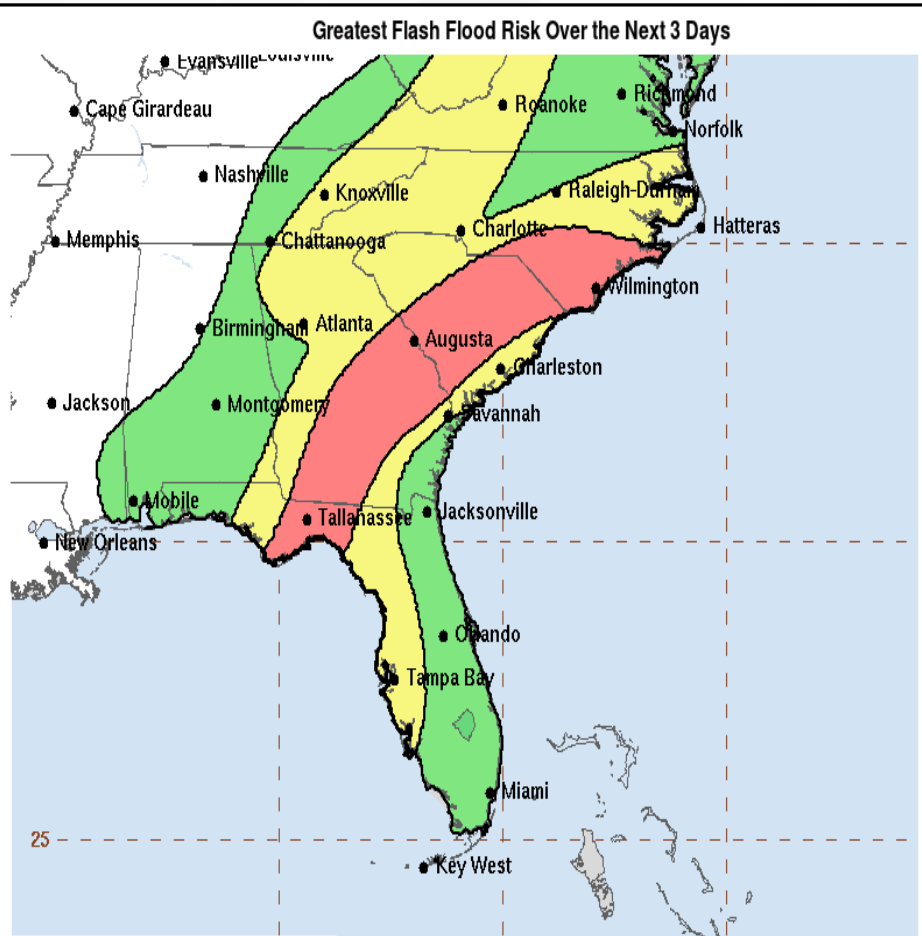


Exact rainfall amounts will be track-dependent, but there is the potential for heavy rainfall amounts of 4-8", with the higher amounts to the right of the track of the system. Isolated locations could receive up to 12" of rain from this system, with coastal portions of the Florida West Coast and Big Bend being the most at risk for these higher amounts.



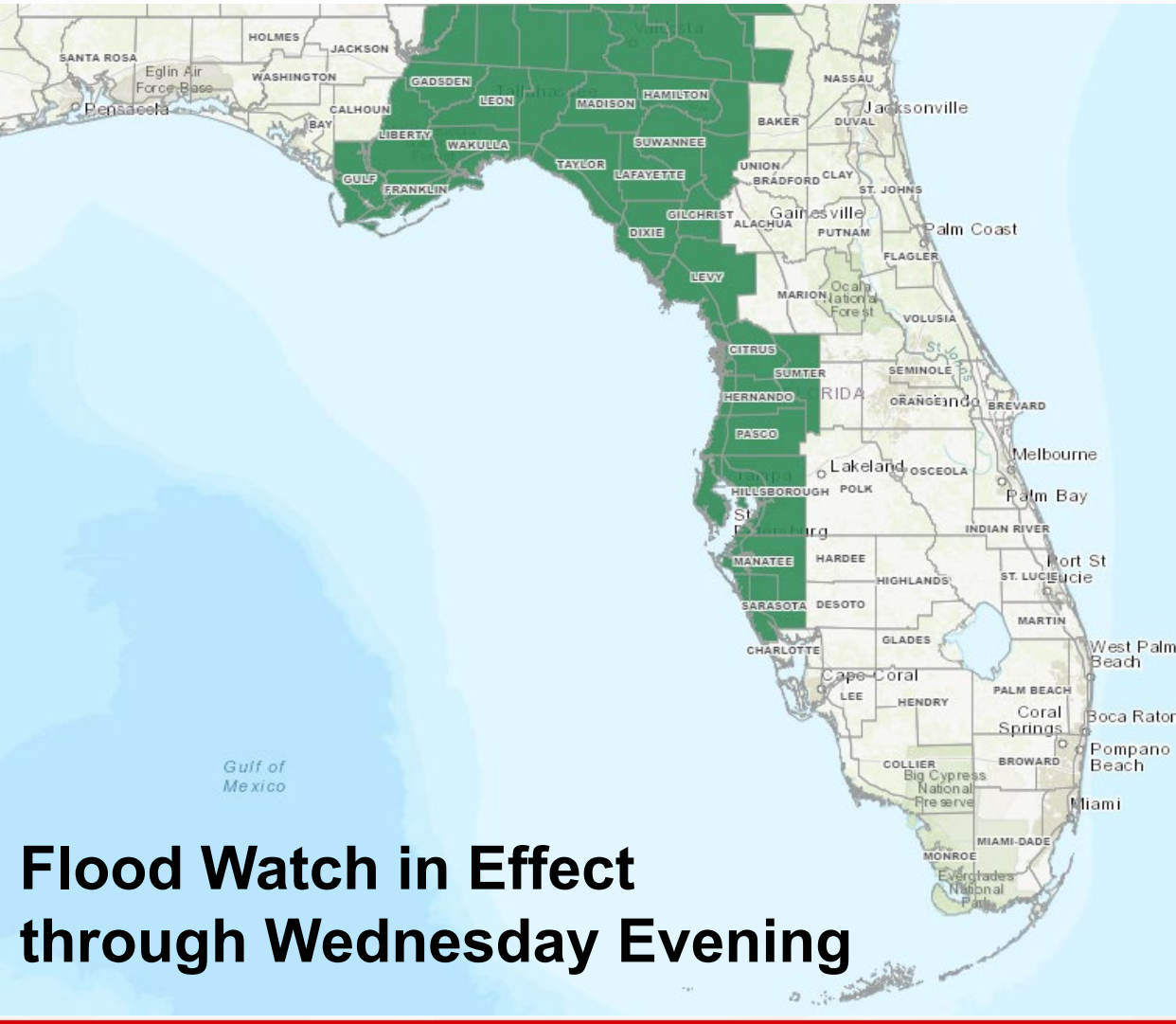
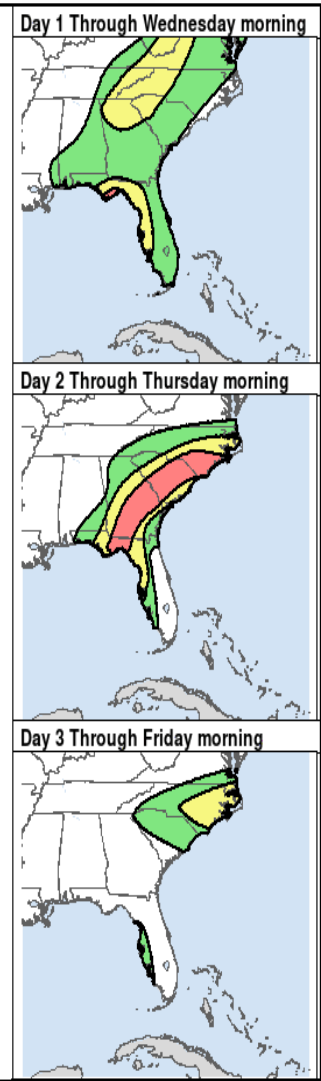
Flood Outlooks & Watch

From the Weather Prediction Center



Hurricane Idalia
Day 1-3 Excessive Rainfall Outlook
Created 4:30 PM EDT Tue Aug 29 2023
Valid 12:00 PM EDT Tue Aug 29 2023
through 8:00 AM EDT Fri Sep 1 2023
NOAA/NWS/NCEP/WPC

| Risk of flash flooding | |
|------------------------|------------------------|
| Marginal: At Least 5% | Moderate: At Least 40% |
| Slight: At Least 15% | High: At Least 70% |

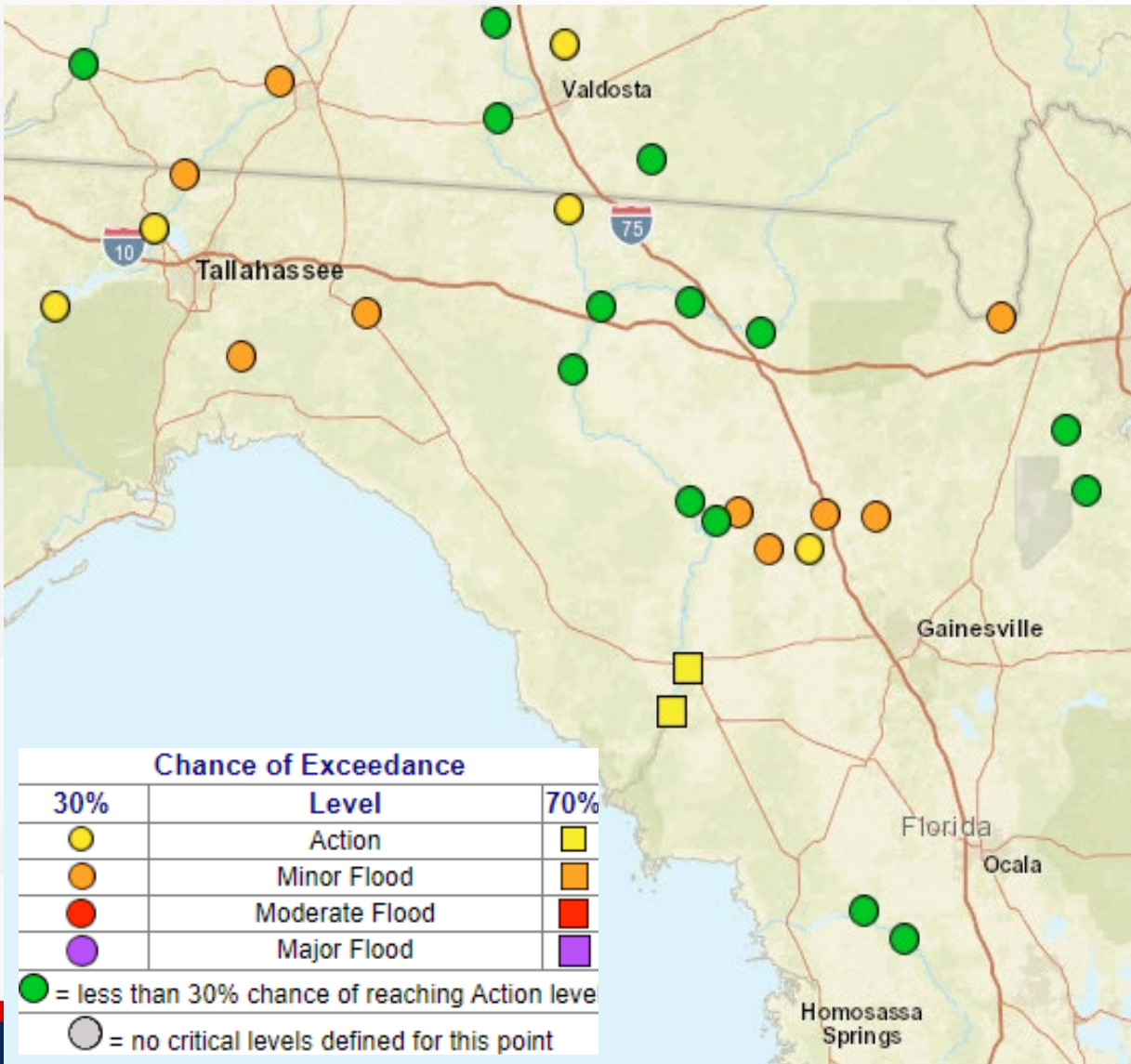


**Flood Watch in Effect
through Wednesday Evening**



Riverine Flooding

From the National Weather Service



Recent dry conditions have kept North Florida and Nature Coast rivers, creeks, and tributaries below flood stage for the last couple of weeks. As Hurricane Idalia continues to push into the eastern Gulf of Mexico and towards the Florida West Coast, several rounds of intense rainfall can be expected. **River Flood Warnings** will go into effect Wednesday afternoon/evening for the [St. Mary's River at Macclenny \(Nassau, Baker\)](#), and Thursday morning/afternoon for [Santa Fe River near Worthington Springs](#) and [O'Leno State Park \(Union, Alachua\)](#) as **minor flooding** is forecast. A **River Flood Warning** will go into effect Wednesday morning for [Alafia River at Riverview \(Hillsborough\)](#) and [Suwannee River near Wilcox \(Gilchrist, Levy and Dixie\)](#) as storm surge associated with Idalia is expected to cause flooding on lower portions of the river. Rainfall totals will remain track-dependent.



Severe Weather Outlook – Tues. & Wed.

From the Storm Prediction Center

5 - High
Widespread severe storms expected

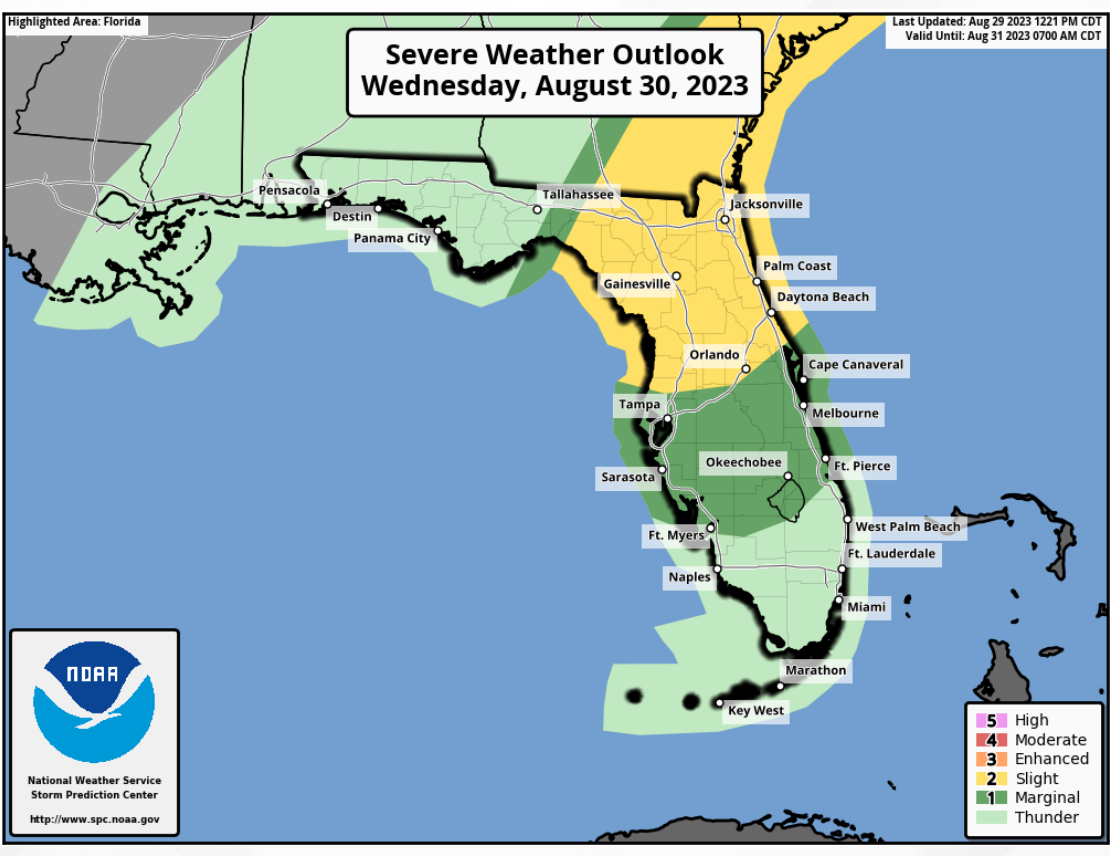
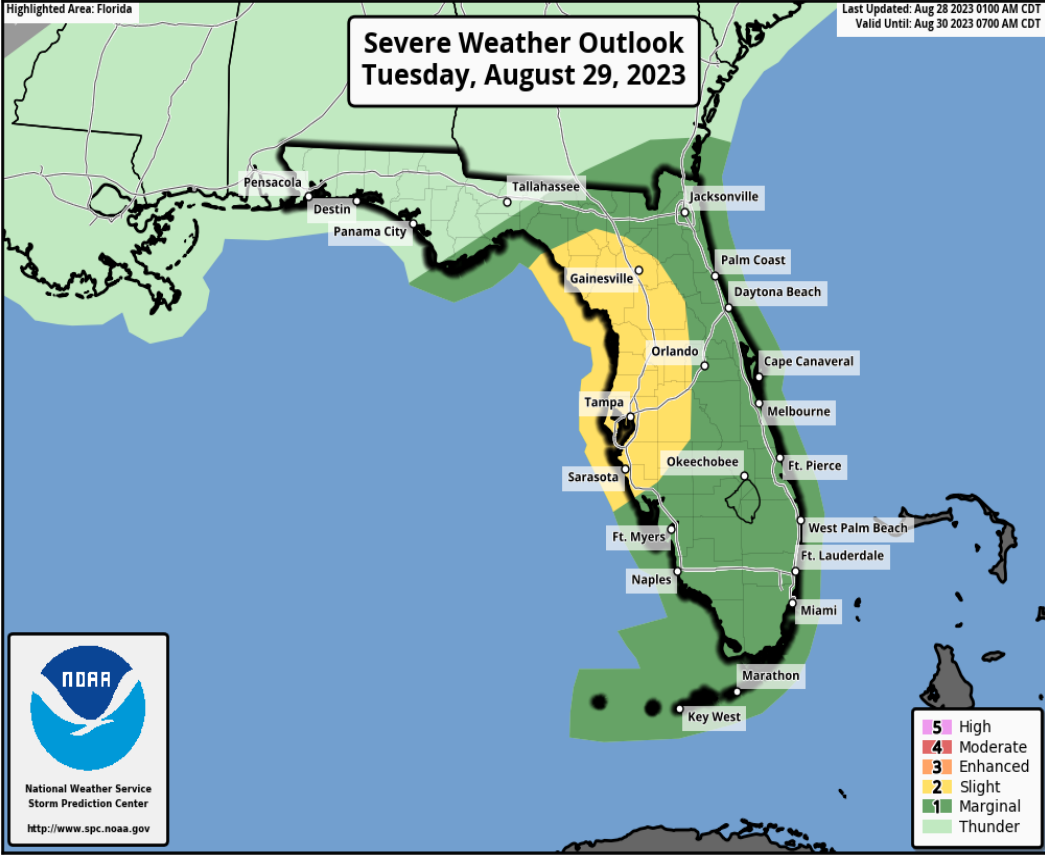
4 - Moderate
Widespread severe storms likely

3 - Enhanced
Numerous severe storms possible

2 - Slight
Scattered severe storms possible

1 - Marginal
Isolated severe storms possible

Thunderstorms
No severe storms expected



A **Slight Risk (level 2 of 5) for Severe Weather** can be expected Tuesday night and into Wednesday morning along the Florida Gulf Coast and into West-Central region as isolated tropical tornadoes may be embedded within Idalia's outer bands as the system approaches the Gulf Coast. The **Marginal Risk (level 1 of 5)** expands to include the Big Bend, Northeast Florida, and the entire Peninsula, as well as the Florida Keys on Tuesday. As Idalia continues to push inland on Wednesday, the **Slight Risk (level 2 of 5) for Severe Weather** shifts over the I-75 corridor and Northeast Florida, with a **Marginal Risk (level 1 of 5)** extending along the Big Bend and throughout Central Florida.



Elevated Rip Current Risk

Panhandle & East Coast Beaches



A **high risk for rip currents** can be expected to develop along all Florida beaches today. Deteriorating beach and boating conditions will continue along all Florida West Coast beaches throughout the day. A **moderate to high risk for rip currents** can be expected to continue through Thursday, at least.



Key Messages

Hurricane Idalia



Key Messages for Hurricane Idalia

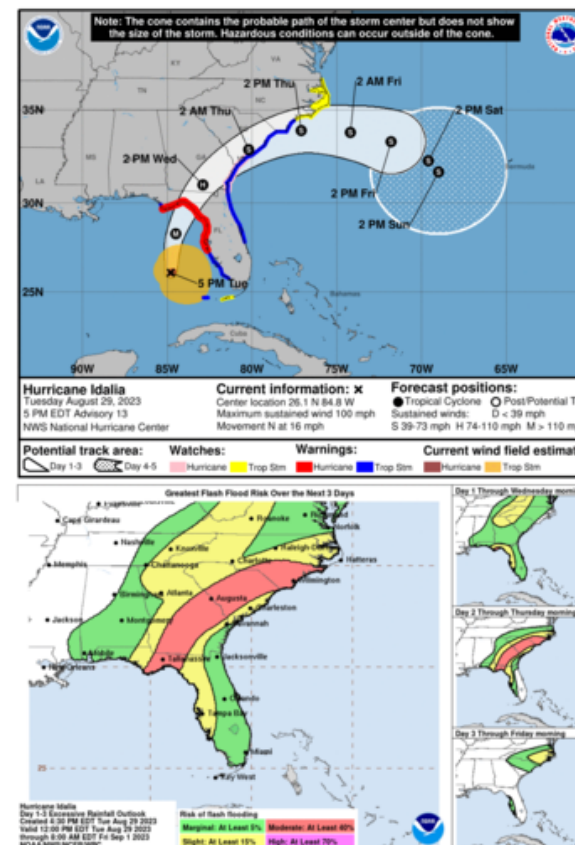
Advisory 13: 5:00 PM EDT Tue Aug 29, 2023



1. Catastrophic impacts from storm surge inundation of 10 to 15 feet above ground level and destructive waves are expected somewhere between Aucilla River and Yankeetown, Florida. Life-threatening storm surge inundation is likely elsewhere along portions of the Florida Gulf Coast where a Storm Surge Warning is in effect. Residents in these areas should follow any advice given by local officials.

2. There is the potential for destructive life-threatening winds where the core of Idalia moves onshore in the Big Bend region of Florida, with hurricane conditions expected elsewhere in portions of the Hurricane Warning area along the Florida Gulf Coast. Strong winds will also spread inland across portions of northern Florida and southern Georgia near the track of the center of Idalia where Hurricane Warnings are in effect. Residents in these areas should be prepared for long-duration power outages. Damaging hurricane-force winds are possible in portions of eastern Georgia and southeastern South Carolina where Hurricane Watches are in effect.

3. Areas of flash, urban, and moderate river flooding, with locally considerable impacts, are expected across the Florida Big Bend, central Georgia and South Carolina, through eastern North Carolina later tonight into Thursday.



For more information go to hurricanes.gov



Summary

Hurricane Idalia:

- As of 5:00 PM EDT, Idalia was located about 195 miles southwest of Tampa, 300 miles south of Tallahassee, and is moving northward at 16 mph. A northward to north-northeastward motion is expected tonight.
- On the forecast track, the center of Idalia is forecast to reach the Big Bend coast of Florida on Wednesday morning.
- After landfall, the center of Idalia is forecast to turn toward the northeast and east, moving near or along the coast of Georgia, South Carolina, and North Carolina late Wednesday and Thursday.
- Maximum sustained winds have increased to 100 mph, making Idalia a Category 2 hurricane. Idalia is expected to become an extremely dangerous major hurricane before it reaches the Big Bend coast of Florida.
- Idalia is likely to still be a hurricane while moving across southern Georgia, and possibly when it reaches the coast of Georgia or southern South Carolina on Wednesday.
- Computer models indicate Idalia will continue to strengthen as it moves over the warm waters of the eastern Gulf of Mexico, before making landfall along the Florida Big Bend or Nature Coast Wednesday morning.
- Tropical Storm Watches/Warnings, Hurricane Watches/Warnings, and Storm Surge Watches/Warnings have been continued across the Big Bend, Northeast and West Florida.

The next briefing package will be issued on Tuesday Night. For the latest information, please visit the [National Hurricane Center website](#).



Summary

Florida Outlook:

- **Hurricane Warning:** Coastal Franklin, Wakulla, Jefferson, Madison, Taylor, Hamilton, Suwanee, Lafayette, Dixie, Columbia, Gilchrist, Levy, Alachua, western Marion, Citrus, Sumter, Hernando, Pasco, Hillsborough, Pinellas, Manatee, Leon, Baker, Bradford, Union
- **Hurricane Watch:** central Marion
- **Tropical Storm Warning:** Gulf, Liberty, Gadsden, Nassau, Duval, Union, Clay, St. Johns, Putnam, Flagler, central Marion, eastern Marion, Volusia, Lake, Seminole, Orange, Brevard, Osceola, Polk, Hardee, Desoto, Sarasota, Charlotte, coastal Collier, Lee, Dry Tortugas
- **Tropical Storm Watch:** Inland Collier and Lower Keys
- **Storm Surge Warning:** Englewood northward (Charlotte/Sarasota border) to Indian Pass (Franklin/Gulf border), including Tampa Bay
- **Storm Surge Watch:** Englewood (Charlotte/Sarasota border) to Bonita Beach (Collier/Lee border)
- Tropical storm-force wind probabilities continue to increase along the Florida West Coast, with tropical impacts beginning as early as Tuesday afternoon in Southwest Florida and expanding northward throughout the night.
- The most likely timeframe for deteriorating conditions across the state will be Tuesday overnight from south to north along the Florida Gulf Coast, and early Wednesday morning across Northeast Florida.
- Computer models show Idalia will continue to intensify over the warm eastern Gulf of Mexico waters through landfall, becoming a major hurricane by late Tuesday or Tuesday night.
- Storm surge values reaching 10-15' will be possible from the Aucilla River to Yankeetown, 7-11' from Yankeetown to Chassahowitzka and from the Aucilla River to the Ochlockonee River, 6-9' from Chassahowitzka to the Anclote River, 4-7' from the Anclote River to the Middle of Longboat Key and from the Ochlockonee River to Carrabelle.
- Storm surge will also be possible southward along the Florida Gulf Coast from the Middle of Longboat Keys through East Cape Sable, from Mexico beach to Carrabelle, along the Northeast coast from the Mouth of the St. Mary's River to the Flagler/Volusia County line, and the Florida Keys.
- There is a Slight Risk (level 2 of 5) for Severe Weather along the Florida Big Bend and through West-Central Florida as isolated tropical tornadoes will be possible within Idalia's outer tropical rainbands as the system approaches the Gulf Coast. A Marginal Risk (level 1 of 5) for Severe Weather extends across North Florida and throughout the Peninsula to the Florida Keys.
- The Slight Risk (level 2 of 5) for Severe Weather will then shift inland over the I-75 corridor and Northeast Florida on Wednesday as Idalia continues to push inland through the Suwannee River Valley. The Marginal Risk (level 1 of 5) for Severe Weather continues for the Florida Big Bend and across Central Florida.
- A Moderate Risk (level 3 of 4) for Flash Flooding can be expected on Tuesday along the Big Bend and Nature Coast ahead of tropical moisture pushing northward and Idalia bringing heavy and intense rainfall to the Gulf Coast. The Slight Risk (level 2 of 4) for Flash Flooding extends along North Florida and through Southwest Florida, with a Marginal Risk (level 1 of 4) statewide.
- The Moderate Risk (level 3 of 4) will shift northeastward across the Suwannee River Valley and Northeast Florida as Idalia continues to push inland, and a Slight Risk (level 2 of 4) can be expected along the Big Bend and through West-Central Florida.
- A Flood Watch has been issued along portions of the Big Bend, Nature Coast, and West-Central Florida as Tropical Storm Idalia is expected to bring intense rainfall across the Florida Gulf Coast, which may lead to localized flash flooding.
- River Flood Warnings will go into effect Wednesday afternoon/evening and Thursday morning for multiple Nature Coast and Suwannee River Valley rivers as rainfall associated with Idalia is forecast to rise water levels into minor flood stage. The Alafia River at Riverview is forecast to rise into major flood stage Wednesday morning due to associated storm surge along lower portions of the river.

The next briefing package will be issued on Tuesday Night. For the latest information, please visit the [National Hurricane Center website](#).



Tropical Update



Created by:

Melissa James, Assistant State Meteorologist

Melissa.James@em.myflorida.com

State Meteorological Support Unit

Florida Division of Emergency Management

Users wishing to subscribe (approval pending) to this distribution list, register at:

https://public.govdelivery.com/accounts/FLDEM/subscriber/new?topic_id=SERT_Met_Tropics.

Other reports available for subscription are available at:

<https://public.govdelivery.com/accounts/FLDEM/subscriber/new?preferences=true>