



# Tropical Update



5:00 AM EDT

Tuesday, August 29, 2023

**Hurricane Idalia, Major Hurricane Franklin,  
Eastern Tropical Atlantic (50%) & Central  
Subtropical Atlantic (30%)**

This update is intended for government and emergency response officials, and is provided for informational and situational awareness purposes only. Forecast conditions are subject to change based on a variety of environmental factors. For additional information, or for any life safety concerns with an active weather event please contact your County Emergency Management or Public Safety Office, local National Weather Service forecast office, or visit the National Hurricane Center website at [www.hurricanes.gov](http://www.hurricanes.gov).



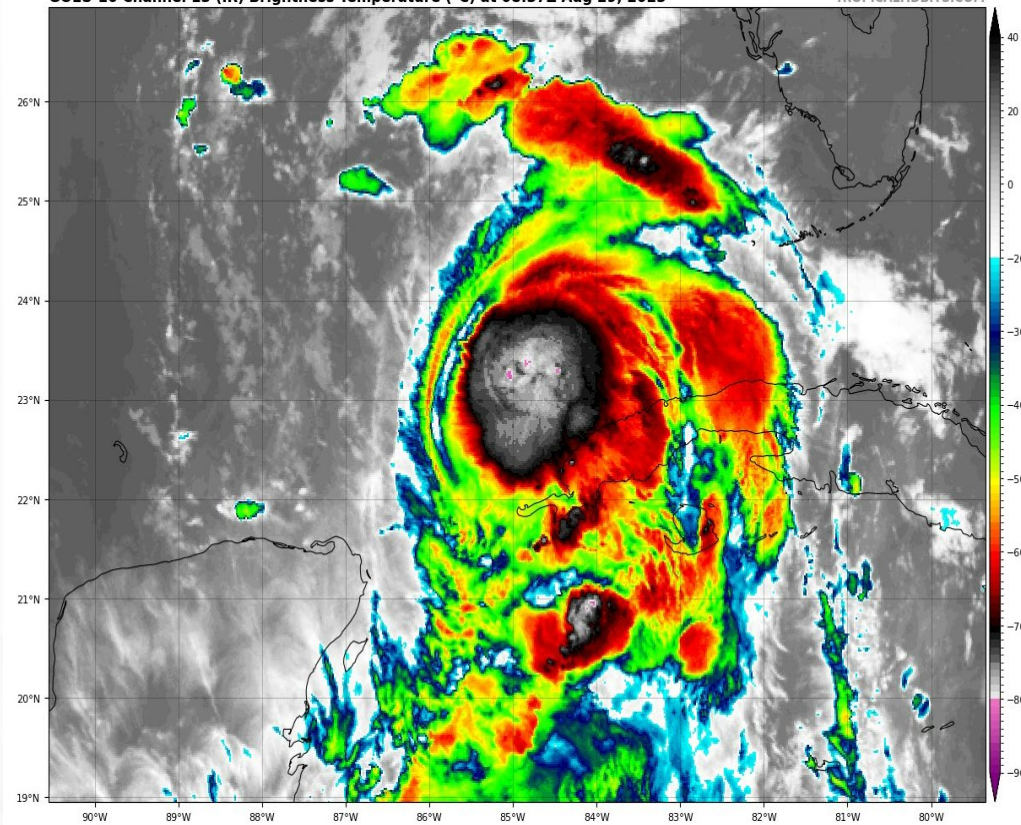
# Hurricane Idalia

5:00 AM EDT Tuesday: Florida Threats & Changes Since Last Packet

	MINIMAL	Low	MODERATE	HIGH	EXTREME
WINDS					
STORM SURGE					
FLASH FLOODING					
TORNADOES					
	Low	MODERATE	HIGH		
RIP CURRENTS					

GOES-16 Channel 13 (IR) Brightness Temperature (°C) at 08:37Z Aug 29, 2023

TROPICALTIDBITS.COM



## Overview/Recent Changes:

With the 5:00 AM update, Idalia has maximum sustained winds of 75 mph making it a Category 1 hurricane. The storm is currently located about 175 miles southwest of the Dry Tortugas and about 370 miles south-southwest of Tampa, Florida. Rapid intensification is likely through landfall on Wednesday. A Flood Watch has been issued from the Big Bend through West-Central Florida as several rounds of rainfall are expected to produce rainfall totals of 4-8", with locally higher totals upwards of 12" leading to an increase for localized flash flooding.

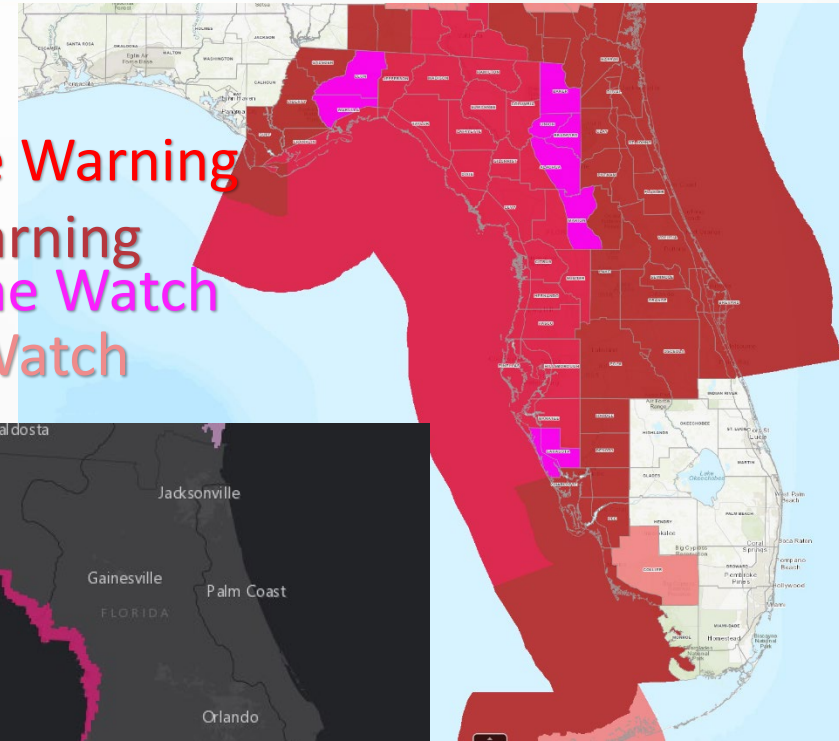


# Current Watches/Warnings

As of 11:00 PM EDT Monday

- **Hurricane Warning:**
  - Coastal Franklin, coastal Wakulla, Jefferson, Madison, Taylor, Hamilton, Suwanee, Lafayette, Dixie, Columbia, Gilchrist, Levy, western Alachua, western Marion, Citrus, Sumter, Hernando, Pasco, Hillsborough, Pinellas, Manatee
- **Hurricane Watch:**
  - Eastern Alachua, Baker, Bradford, Leon, central Marion, Sarasota, Union, inland Wakulla
- **Tropical Storm Warning:**
  - Gulf, Liberty, inland Franklin, inland Wakulla, Gadsden, Leon, Nassau, Duval, Baker, Union, Bradford, Clay, St. Johns, Putnam, Flagler, central Marion, eastern Marion, Volusia, Lake, Seminole, Orange, Brevard, Osceola, Polk, Hardee, Desoto, Sarasota, Charlotte, Lee, coastal Collier
- **Tropical Storm Watch:**
  - Inland Collier and Lower Keys
- **Storm Surge Warning:**
  - Englewood northward (Charlotte/Sarasota border) to Indian Pass (Franklin/Gulf border), including Tampa Bay
- **Storm Surge Watch:**
  - Englewood (Charlotte/Sarasota border) to Chokoloskee (Collier/Monroe border), including Charlotte Harbor

Hurricane Warning  
TS Warning  
Hurricane Watch  
TS Watch

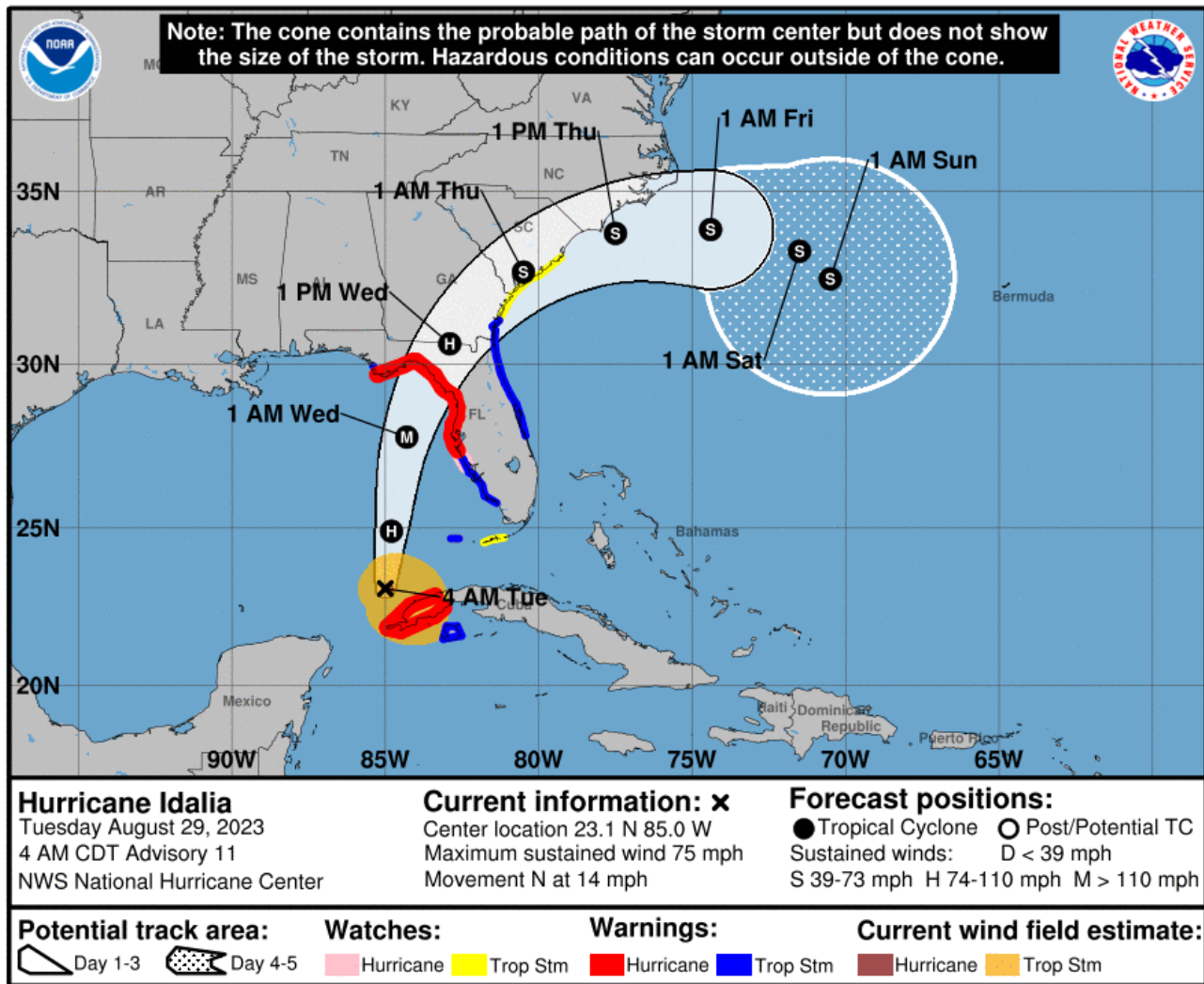






# Forecast Cone

## Hurricane Idalia ([LINK](#))



- **Location:** 175 miles SW of the Dry Tortugas; 370 miles SSW of Tampa
- **Maximum Sustained Winds:** 75 mph; Category 1
- **Current Movement:** N at 14 mph
- **FL Watches/Warnings:**
  - **Hurricane Warning:** Coastal Big Bend, inland East Big Bend, coastal West Central Florida
  - **Hurricane Watch:** inland central Big Bend, eastern Suwannee Valley, northern coastal Southwest Florida
  - **Tropical Storm Warning:** western Big Bend, Northeast Florida, East Central Florida, inland Central Florida, coastal Southwest Florida
  - **Tropical Storm Watch:** Lower Keys

A faster north and north-northeastward motion is expected to continue today and Wednesday. On the forecast, track the center of Idalia is forecast to reach the Gulf Coast within the Hurricane Warning area on Wednesday, and move close to the Carolina coastline on Thursday. Maximum sustained winds have now increased to 75 mph, making Idalia a Category 1 hurricane. Rapid intensification is likely through landfall, and Idalia is forecast to become an extremely dangerous major hurricane before landfall on Wednesday morning.

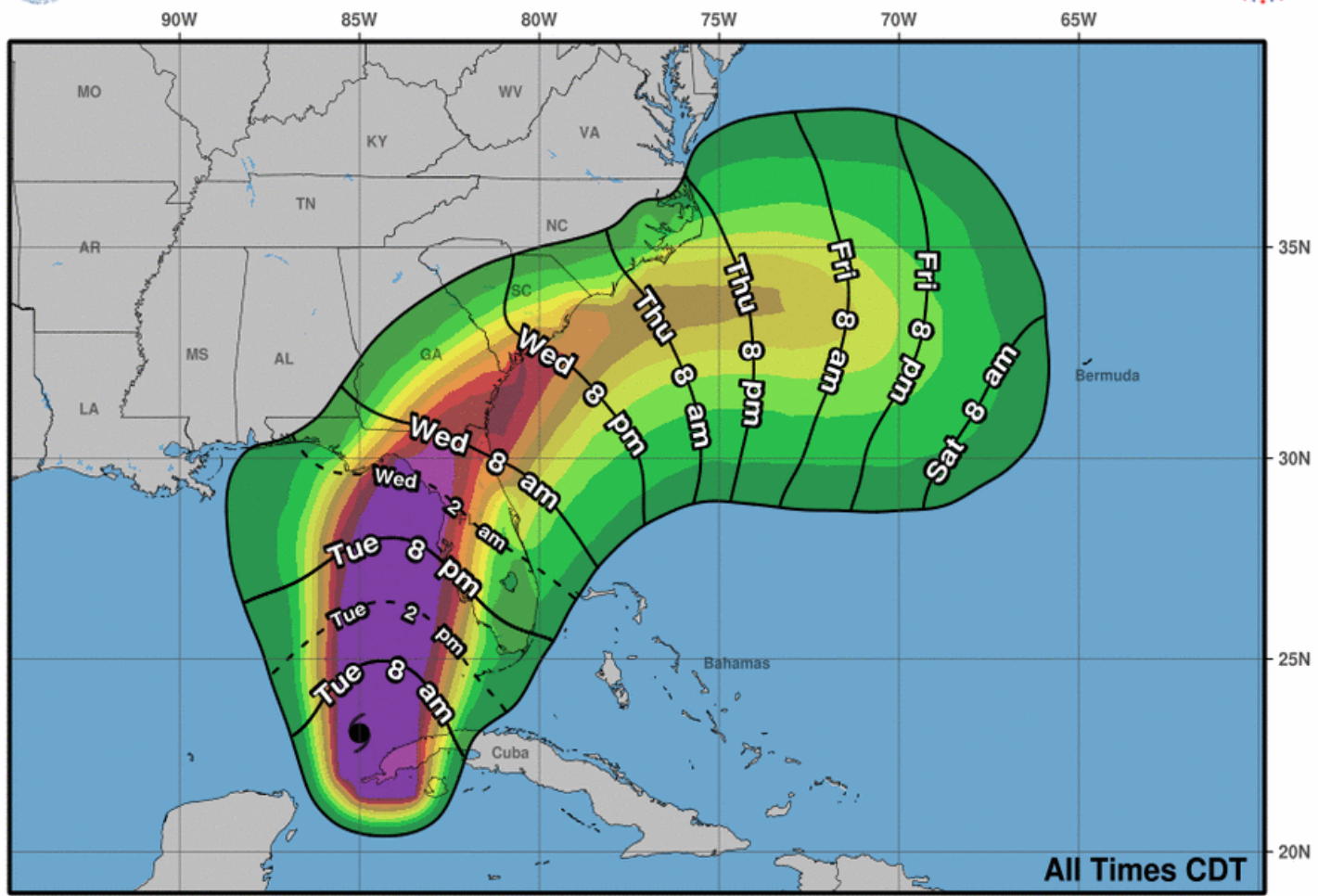


# Tropical Storm-Force Wind Probabilities

## Hurricane Idalia



### Most Likely Arrival Time of Tropical-Storm-Force Winds



**Hurricane Idalia**  
Tue. Aug. 29, 2023 4 am CDT  
Advisory 11

**Storm Location & Wind Speed**  
○ < 34 kt (39 mph)  
● 34-63 kt (39-73 mph)  
● ≥ 64 kt (74 mph)

**5-day chance of receiving sustained 34+ kt (39+ mph) winds**  
5 10 20 30 40 50 60 70 80 90 100 %

- Key West – 17% (-10%)
- Naples – 44% (-8%)
- Tampa – 91% (+1%)
- Orlando – 33% (-8%)
- Cedar Key – 97% (+1%)
- Tallahassee – 53% (+5%)
- St. Marks – 65% (+3%)
- Apalachicola – 66% (+2%)
- Panama City – 35% (-5%)
- Jacksonville – 76% (+3%)

**\*The numbers in parenthesis show the change in probability since the previous briefing packet.\***

Probabilities for tropical storm-force winds continue to increase along the Florida Big Bend, Nature Coast, and West-Central. Tropical impacts can be anticipated to begin as early as Tuesday morning along portions of the Southwest Florida and expanding northward throughout the day. The most likely timeframe for deteriorating conditions across the state will be Tuesday evening and overnight into Wednesday from south to north as Idalia continues to progress towards the Florida Gulf Coast. As Idalia pushes inland on Wednesday, deteriorating conditions will expand across the Suwannee River Valley and Northeast Florida.



# Tropical Storm-Force Wind Timing

## Hurricane Idalia

		Tropical Storm (34 kt/39 mph)		Strong Tropical Storm (50 kt/58 mph)	
Title	State	Earliest(hrs)	Most Likely(hrs)	Earliest(hrs)	Most Likely(hrs)
Alachua	FL	08/30 1AM(20)	08/30 4AM(23)	08/30 5AM(24)	08/30 7AM(26)
Baker	FL	08/30 4AM(23)	08/30 7AM(26)	08/30 8AM(27)	08/30 10AM(29)
Bay	FL	08/29 9PM(16)	08/30 5AM(24)	n/a	n/a
Bradford	FL	08/30 2AM(21)	08/30 5AM(24)	08/30 6AM(25)	08/30 8AM(27)
Brevard	FL	08/29 8PM(15)	08/30 4AM(23)	n/a	n/a
Broward	FL	08/29 11AM(6)	08/29 10PM(17)	n/a	n/a
Calhoun	FL	08/30 12AM(19)	08/30 7AM(26)	n/a	n/a
Charlotte	FL	08/29 1PM(8)	08/29 6PM(13)	08/29 2PM(9)	08/29 9PM(16)
Citrus	FL	08/29 9PM(16)	08/29 11PM(18)	08/30 1AM(20)	08/30 3AM(22)
Clay	FL	08/30 3AM(22)	08/30 6AM(25)	08/30 6AM(25)	08/30 9AM(28)
Collier	FL	08/29 11AM(6)	08/29 7PM(14)	n/a	n/a
Columbia	FL	08/30 3AM(22)	08/30 6AM(25)	08/30 7AM(26)	08/30 9AM(28)
DeSoto	FL	08/29 5PM(12)	08/29 11PM(18)	n/a	n/a
Dixie	FL	08/30 1AM(20)	08/30 4AM(23)	08/30 5AM(24)	08/30 7AM(26)
Duval	FL	08/30 5AM(24)	08/30 8AM(27)	08/30 7AM(26)	08/30 11AM(30)
Flagler	FL	08/30 4AM(23)	08/30 8AM(27)	08/30 3AM(22)	08/30 10AM(29)
Franklin	FL	08/29 11PM(18)	08/30 2AM(21)	08/30 1AM(20)	08/30 5AM(24)
Gadsden	FL	08/30 2AM(21)	08/30 8AM(27)	08/30 6AM(25)	08/30 10AM(29)
Gilchrist	FL	08/30 1AM(20)	08/30 4AM(23)	08/30 5AM(24)	08/30 7AM(26)
Glades	FL	08/29 1PM(8)	08/29 11PM(18)	n/a	n/a
Gulf	FL	08/29 11PM(18)	08/30 2AM(21)	08/30 1AM(20)	08/30 5AM(24)
Hamilton	FL	08/30 5AM(24)	08/30 8AM(27)	08/30 8AM(27)	08/30 11AM(30)
Hardee	FL	08/29 5PM(12)	08/29 11PM(18)	n/a	n/a

Hendry	FL	08/29 11AM(6)	08/29 9PM(16)	n/a	n/a
Hernando	FL	08/29 7PM(14)	08/29 10PM(17)	08/29 11PM(18)	08/30 1AM(20)
Highlands	FL	08/29 5PM(12)	08/30 12AM(19)	n/a	n/a
Hillsborough	FL	08/29 8PM(15)	08/29 11PM(18)	08/29 10PM(17)	08/30 1AM(20)
Holmes	FL	08/29 11PM(18)	08/30 9AM(28)	n/a	n/a
Indian River	FL	08/29 1PM(8)	08/30 1AM(20)	n/a	n/a
Jackson	FL	08/30 12AM(19)	08/30 7AM(26)	n/a	n/a
Jefferson	FL	08/30 1AM(20)	08/30 4AM(23)	08/30 5AM(24)	08/30 7AM(26)
Lafayette	FL	08/30 2AM(21)	08/30 6AM(25)	08/30 6AM(25)	08/30 8AM(27)
Lake	FL	08/29 11PM(18)	08/30 2AM(21)	08/30 12AM(19)	08/30 5AM(24)
Lee	FL	08/29 4PM(11)	08/29 6PM(13)	08/29 2PM(9)	08/29 9PM(16)
Leon	FL	08/30 2AM(21)	08/30 8AM(27)	08/30 6AM(25)	08/30 10AM(29)
Levy	FL	08/29 10PM(17)	08/30 1AM(20)	08/30 2AM(21)	08/30 5AM(24)
Liberty	FL	08/30 1AM(20)	08/30 6AM(25)	08/30 4AM(23)	08/30 7AM(26)
Madison	FL	08/30 4AM(23)	08/30 8AM(27)	08/30 7AM(26)	08/30 10AM(29)
Manatee	FL	08/29 5PM(12)	08/29 8PM(15)	08/29 5PM(12)	08/29 11PM(18)
Marion	FL	08/30 1AM(20)	08/30 4AM(23)	08/30 1AM(20)	08/30 7AM(26)
Martin	FL	08/29 1PM(8)	08/30 12AM(19)	n/a	n/a
Miami-Dade	FL	08/29 10AM(5)	08/29 7PM(14)	n/a	n/a
Monroe	FL	08/29 10AM(5)	08/29 6PM(13)	n/a	n/a
Nassau	FL	08/30 7AM(26)	08/30 10AM(29)	08/30 10AM(29)	08/30 1PM(32)
Okeechobee	FL	08/29 1PM(8)	08/30 12AM(19)	n/a	n/a
Orange	FL	08/29 11PM(18)	08/30 3AM(22)	n/a	n/a





# Tropical Storm-Force Wind Probabilities

## Hurricane Idalia

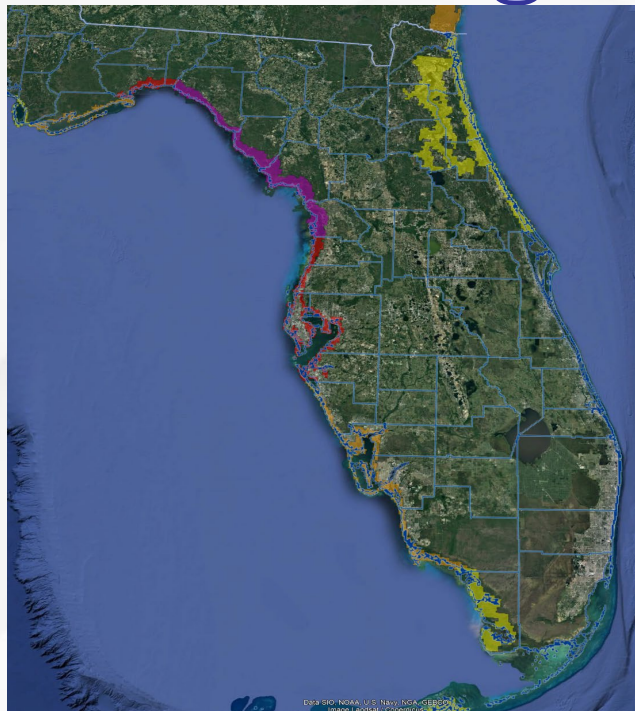
Osceola	FL	08/29 8PM(15)	08/30 3AM(22)	n/a	n/a
Palm Beach	FL	08/29 12PM(7)	08/29 11PM(18)	n/a	n/a
Pasco	FL	08/29 7PM(14)	08/29 10PM(17)	08/29 11PM(18)	08/30 1AM(20)
Pinellas	FL	08/29 6PM(13)	08/29 8PM(15)	08/29 9PM(16)	08/30 12AM(19)
Polk	FL	08/29 8PM(15)	08/30 12AM(19)	n/a	n/a
Putnam	FL	08/30 3AM(22)	08/30 6AM(25)	08/30 3AM(22)	08/30 9AM(28)
Sarasota	FL	08/29 5PM(12)	08/29 8PM(15)	08/29 5PM(12)	08/29 11PM(18)
Seminole	FL	08/29 10PM(17)	08/30 5AM(24)	n/a	n/a
St. Johns	FL	08/30 4AM(23)	08/30 8AM(27)	08/30 3AM(22)	08/30 10AM(29)
St. Lucie	FL	08/29 1PM(8)	08/30 12AM(19)	n/a	n/a
Sumter	FL	08/29 10PM(17)	08/30 12AM(19)	08/30 12AM(19)	08/30 3AM(22)
Suwannee	FL	08/30 3AM(22)	08/30 6AM(25)	08/30 7AM(26)	08/30 9AM(28)
Taylor	FL	08/29 11PM(18)	08/30 2AM(21)	08/30 3AM(22)	08/30 6AM(25)
Union	FL	08/30 4AM(23)	08/30 7AM(26)	08/30 8AM(27)	08/30 10AM(29)
Volusia	FL	08/29 10PM(17)	08/30 5AM(24)	08/30 3AM(22)	08/30 10AM(29)
Wakulla	FL	08/30 1AM(20)	08/30 4AM(23)	08/30 4AM(23)	08/30 7AM(26)
Walton	FL			n/a	n/a
Washington	FL	08/29 11PM(18)	08/30 7AM(26)	n/a	n/a



# Impact Threat

## From the National Weather Service

### Storm Surge

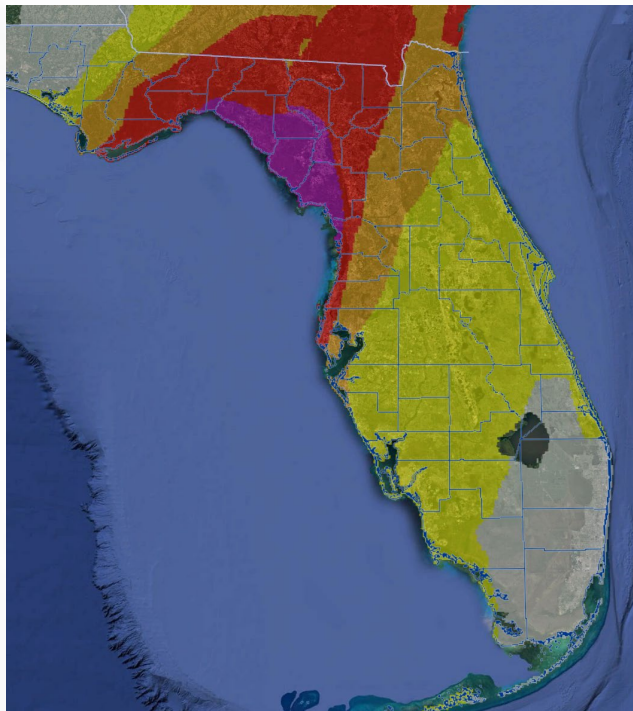


- \*Widespread deep inundation, powerful battering waves.
- \*Structural damage to buildings
- \*Locations may be uninhabitable for an extended period.
- \*Near-shore escape routes and secondary roads washed out or severely flooded.
- \*Massive damage to marinas, docks, boardwalks, and piers.
- \*Numerous small craft broken away from moorings with many lifted onshore and stranded.

#### Storm Surge Threat

Potential for storm surge flooding greater than 9 ft above ground
Potential for storm surge flooding greater than 6 ft above ground
Potential for storm surge flooding greater than 3 ft above ground
Potential for storm surge flooding greater than 1 ft above ground
Little to no storm surge flooding

### Wind

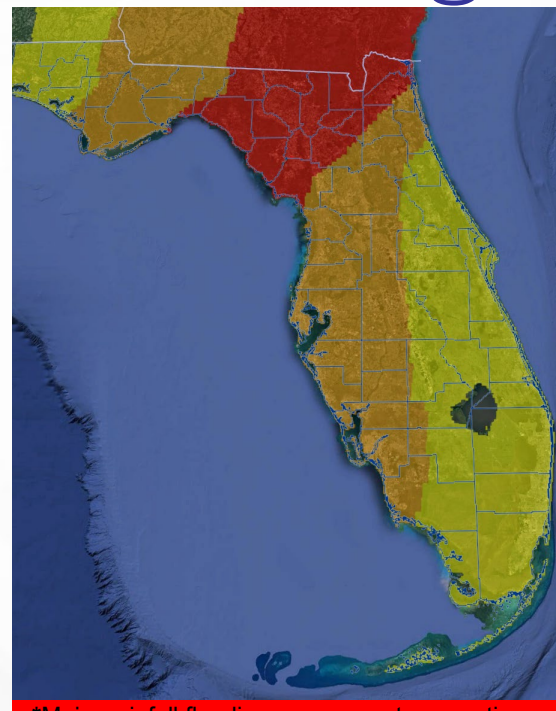


- \*Structural damage to buildings, some with complete roof and wall failures.
- \*Complete destruction of mobile homes.
- \*Locations may be uninhabitable for weeks or months.
- \*Numerous large trees snapped or uprooted.
- \*Many roads impassable from large debris,
- \*Widespread power and communications outages.

#### Wind Threat

Potential for wind greater than 110 mph
Potential for wind 74 to 110 mph
Potential for wind 58 to 73 mph
Potential for wind 39 to 57 mph
Wind less than 39 mph

### Flooding

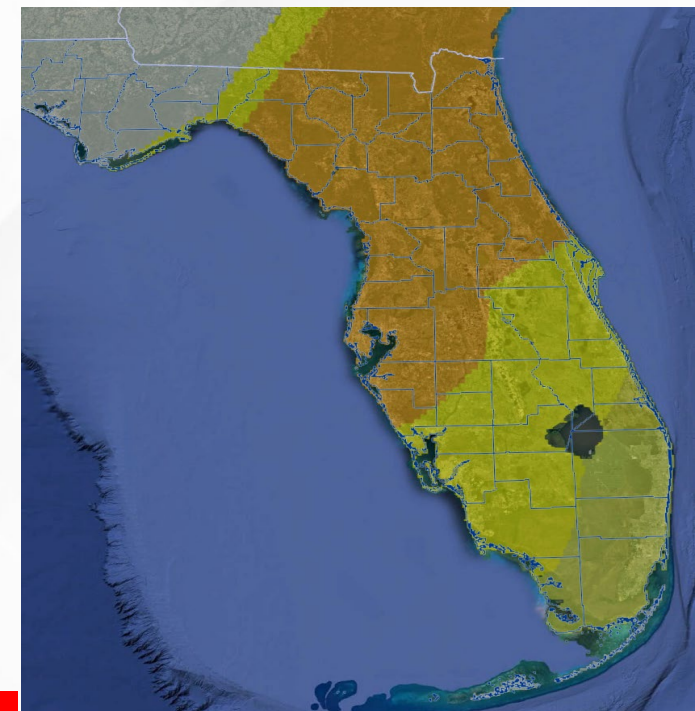


- \*Major rainfall flooding may prompt evacuations and rescues.
- \*Rivers and tributaries may rapidly overflow their banks in multiple places. Small streams, creeks, canals, and ditches may become dangerous rivers.
- \*Many road and bridge closures with some weakened or washed out.

#### Flooding Rain Threat

Potential for extreme flooding rain
Potential for major flooding rain
Potential for moderate flooding rain
Potential for localized flooding rain
Little to no potential for flooding rain

### Tornadoes

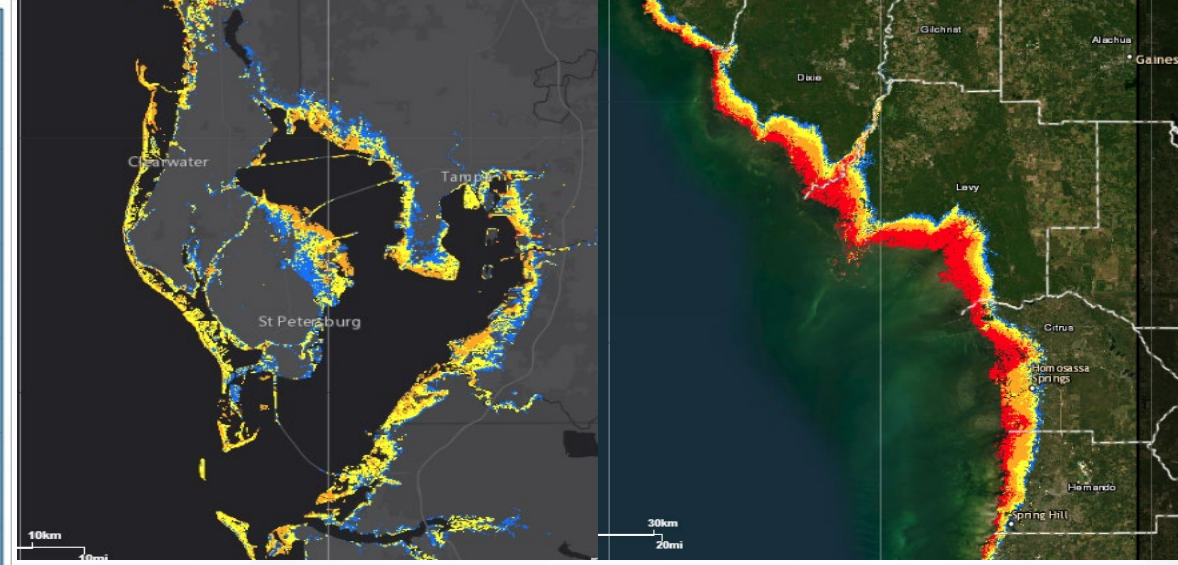


- \*Scattered tornadoes can hinder the execution of emergency plans.
- \*Spots of considerable damage, power loss, and communications failures.
- \*Locations could realize roofs torn off, mobile homes demolished, large trees snapped or uprooted, vehicles tumbled, and boats tossed about.

#### Tornado Threat

Potential for outbreak of tornadoes
Potential for many tornadoes
Potential for several tornadoes
Potential for a few tornadoes
Tornadoes not expected





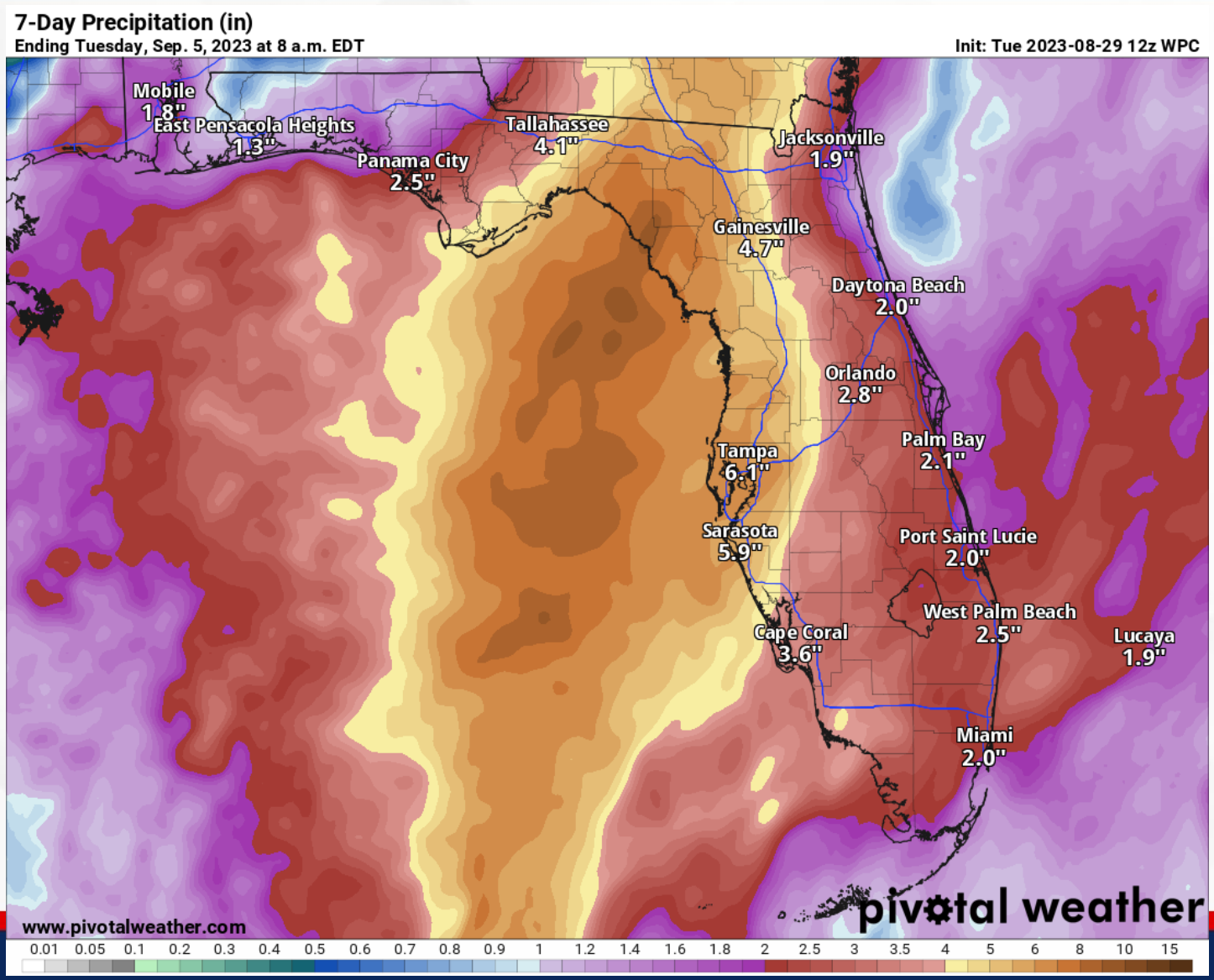
Peak storm surge will be greatest along the eastern Forgotten Coast and Nature Coast from the Aucilla River to Chassahowitzka with 8-12' forecast. 6-9' is currently expected from Chassahowitzka to the Anclote River with 4-7' from Ochlockonee River to the Aucilla River and from the Anclote River to Middle of Longboat Key. Lower surge values of up 3-5' are forecast from the Middle of Longboat Key to Englewood and from the Ocklockonee River to Indian Pass. Storm surge will also be possible southward along the Florida Gulf Coast from Englewood through Charlotte Harbor, from Mexico Beach to Indian Pass, along the Northeast coast from the Mouth of the St. Mary's River to the Flagler/Volusia County line, and the Florida Keys.

**User Notes:** Water levels along the immediate coast could reach the following heights above ground level within the indicated areas. Elevated water levels will likely be accompanied by large and destructive waves. Colors are determined by the highest values in the associated forecast peak surge range. Values shown on this graphic are inclusive of tide.



# 7-Day Forecast Rainfall

From the National Weather Service & Weather Prediction Center



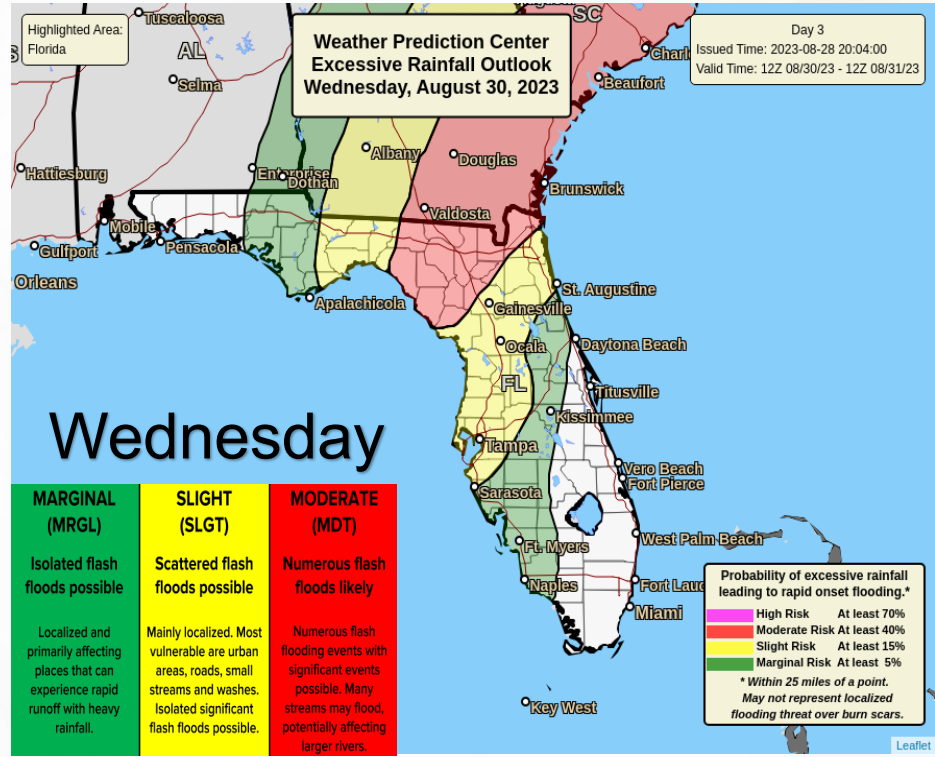
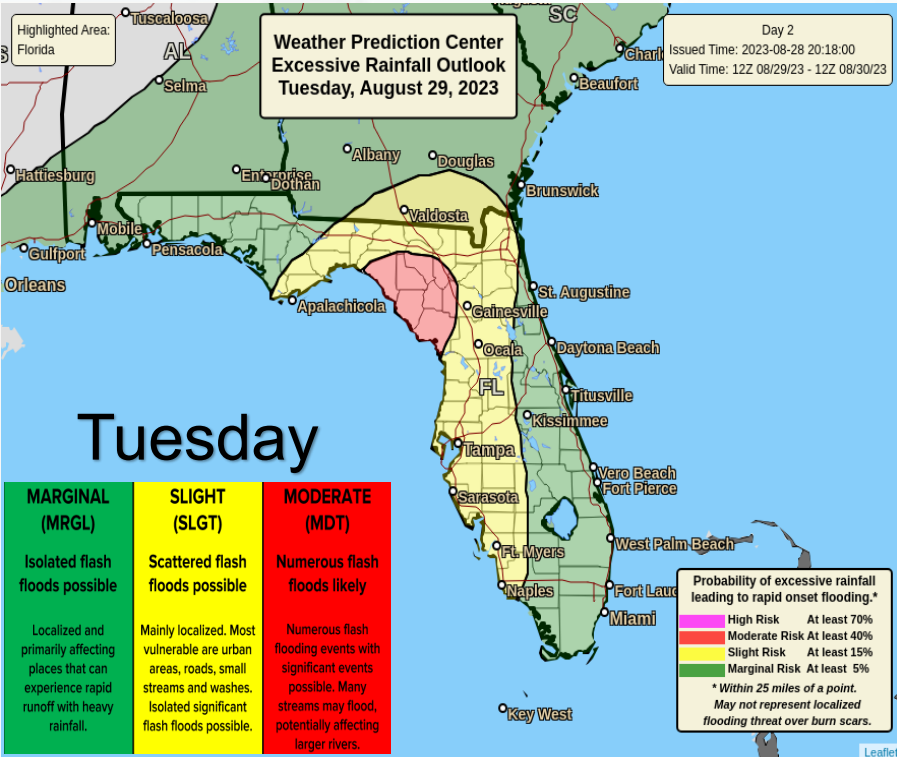
Exact rainfall amounts will be track-dependent, but there is the potential for heavy rainfall amounts of 4-8", with the higher amounts to the right of the track of the system. Isolated locations could receive up to 12" of rain from this system, with coastal portions of the Florida West Coast and Big Bend being the most at risk for these higher amounts.





# Flash Flood Outlook – Tue. & Wed.

## From the Weather Prediction Center



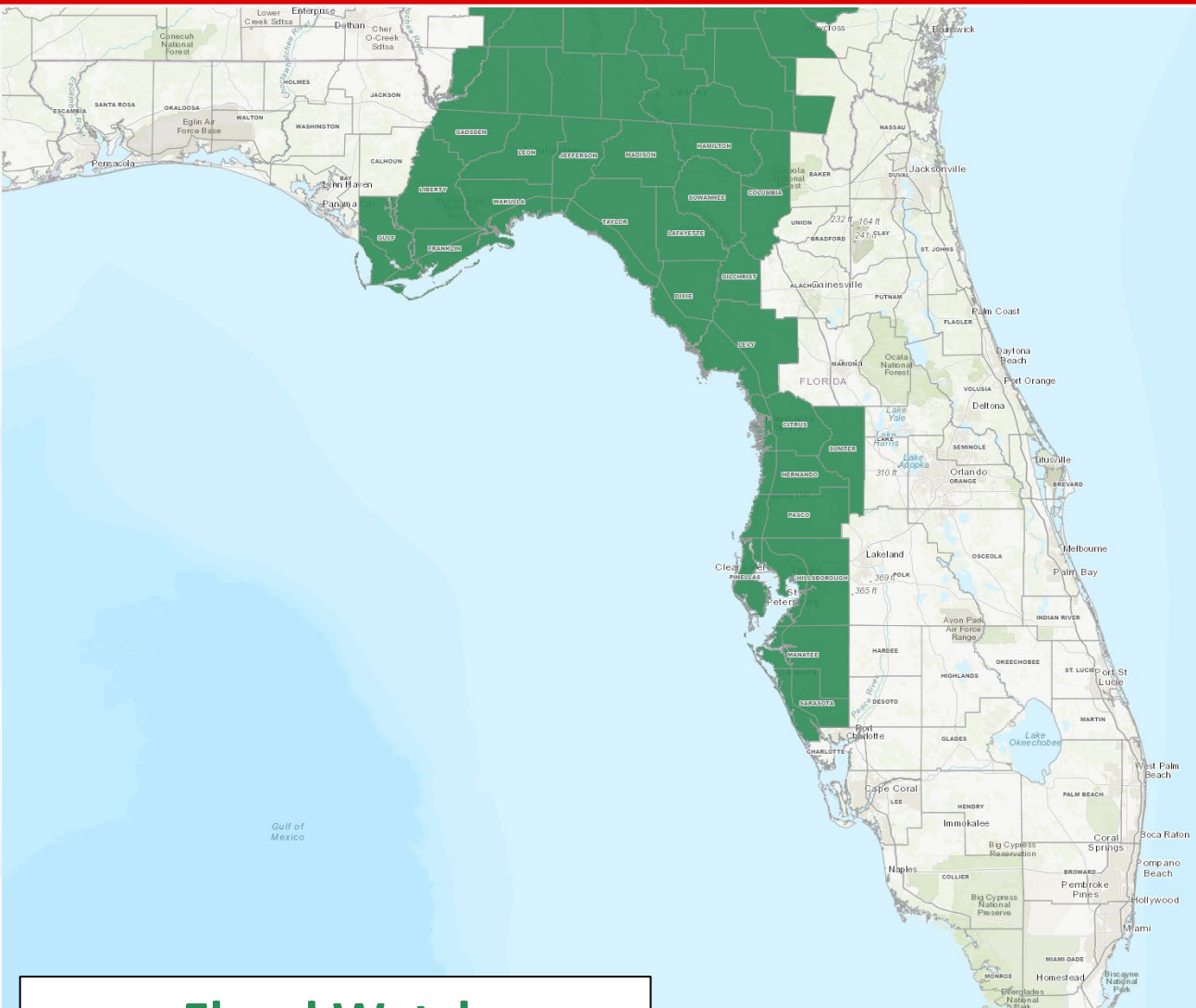
As Idalia pushes into the eastern Gulf of Mexico, tropical moisture will continue to push from south to north. There is a **Moderate Risk (level 3 of 4) for Flash Flooding** along the Florida Big Bend and Nature Coast, with a **Slight Risk (level 2 of 4)** extending across much of North and West Florida, and a **Marginal Risk (level 1 of 4)** extending statewide. As Idalia pushes inland on Wednesday, a **Moderate Risk (level 3 of 4)** expands over the Suwannee River Valley and into Northeast Florida, with a **Slight Risk (level 2 of 4)** continuing across the Big Bend and West-Central Florida.





# Flood Watch

## Today



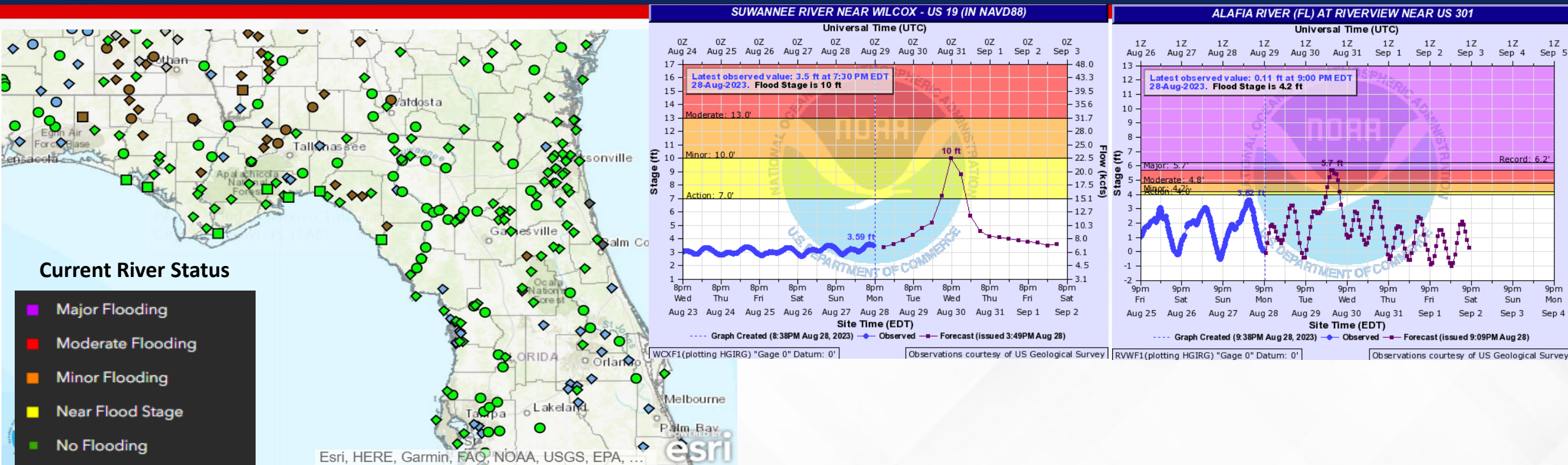
A **Flood Watch** has been issued for portions of the Big Bend, Nature Coast and West-Central Florida as Tropical Cyclone Idalia is expected to bring 4-8" of rainfall, with locally higher totals. Heavy and intense downpours could lead to **localized flash flooding**. *Additional watches and warnings may be issued as deteriorating conditions can be anticipated.*

**Flood Watch**



# Riverine Flooding

## From the Southeast River Forecast Center



Recent dry conditions have kept North Florida and Nature Coast rivers, creeks, and tributaries below flood stage for the last couple of weeks. As Tropical Storm Idalia continues to push into the eastern Gulf of Mexico and towards the Florida West Coast, several rounds of intense rainfall can be expected. **River Flood Warnings** will go into effect Wednesday afternoon/evening for the [St. Mary's River at Macclenny \(Nassau, Baker\)](#), [Suwannee River near Wilcox \(Gilchrist, Levy and Dixie\)](#), and Thursday morning/afternoon for [Santa Fe River near Worthington Springs](#) and [O'Leno State Park \(Union, Alachua\)](#) as **minor flooding** is forecast. A **River Flood Warning** will go into effect Wednesday morning for [Alafia River at Riverview \(Hillsborough\)](#) as storm surge associated with Idalia is expected to cause **major flooding** on lower portions of the river. Rainfall totals will remain track-dependent, but there remains a greater chance for heavy rainfall to the east of the storm's track.



# Severe Weather Outlook – Tues. & Wed.

## From the Storm Prediction Center

**5 - High**  
Widespread severe storms expected

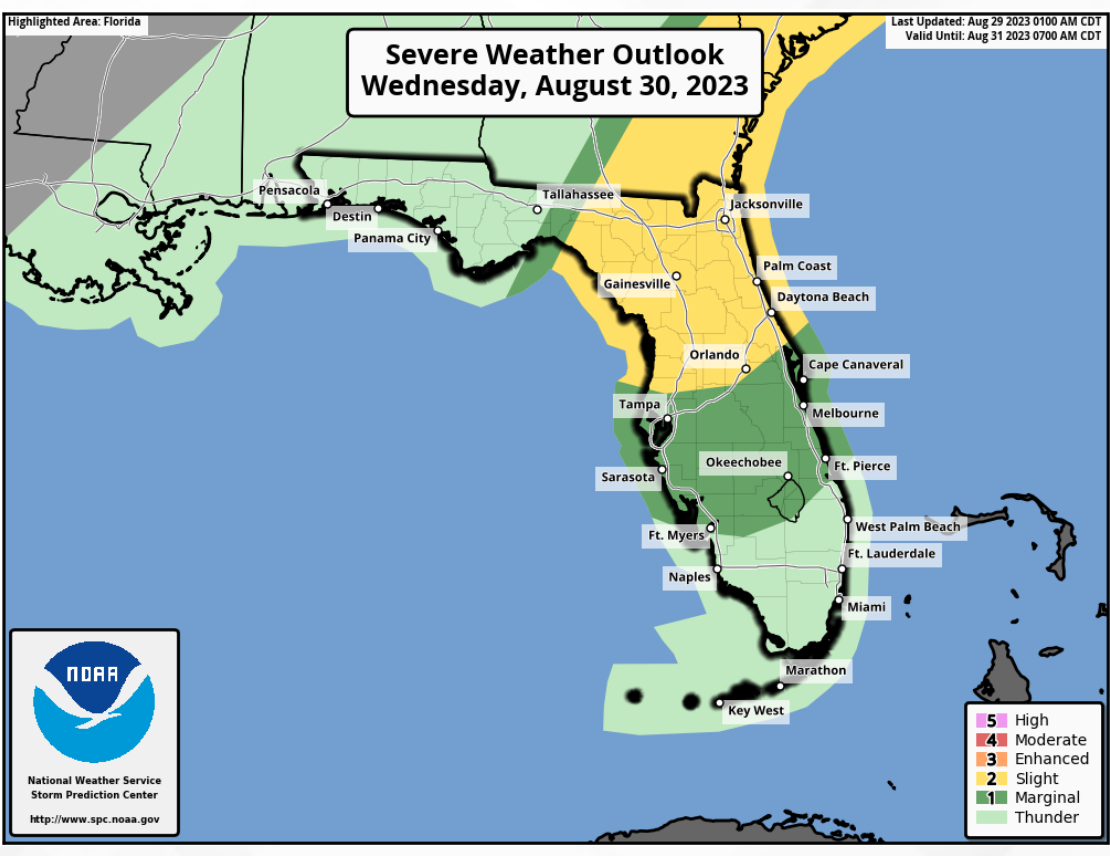
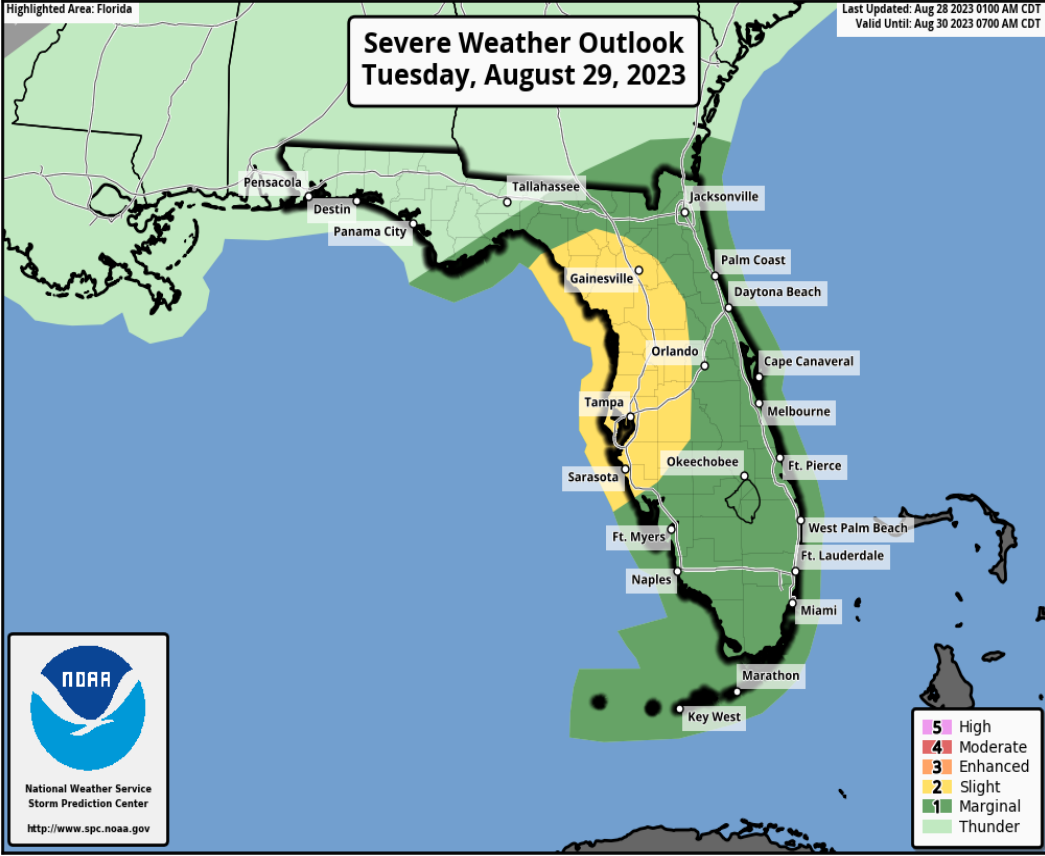
**4 - Moderate**  
Widespread severe storms likely

**3 - Enhanced**  
Numerous severe storms possible

**2 - Slight**  
Scattered severe storms possible

**1 - Marginal**  
Isolated severe storms possible

**Thunderstorms**  
No severe storms expected



A **Slight Risk (level 2 of 5) for Severe Weather** can be expected Tuesday night and into Wednesday morning along the Florida Gulf Coast and into West-Central region as isolated tropical tornadoes may be embedded within Idalia's outer bands as the system approaches the Gulf Coast. The **Marginal Risk (level 1 of 5)** expands to include the Big Bend, Northeast Florida, and the entire Peninsula, as well as the Florida Keys on Tuesday. As Idalia continues to push inland on Wednesday, the **Slight Risk (level 2 of 5) for Severe Weather** shifts over the I-75 corridor and Northeast Florida, with a **Marginal Risk (level 1 of 5)** extending along the Big Bend and throughout Central Florida.





# Elevated Rip Current Risk

## Panhandle & East Coast Beaches



A **high risk for rip currents** can be expected along all Florida East Coast beaches, as well as along several Panhandle beaches. A **moderate to high risk for rip currents** will likely expand along the western Peninsula beaches ahead of Hurricane Idalia. Deteriorating beach and boating conditions will continue along all Florida West Coast beaches throughout the day. A **moderate to high risk for rip currents** can be expected to continue through Thursday, at least.



# Key Messages

## Hurricane Idalia



### Key Messages for Hurricane Idalia

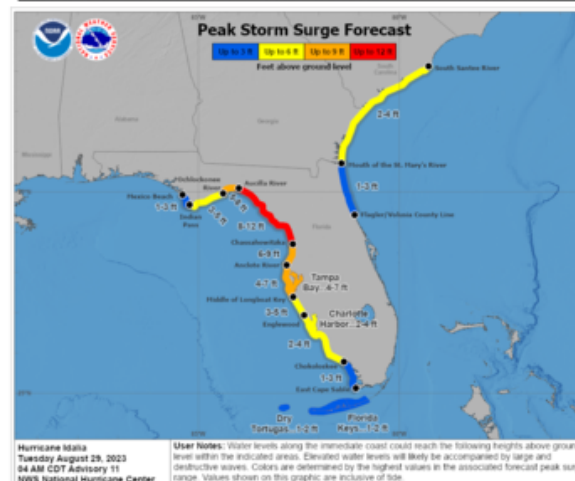
#### Advisory 11: 4:00 AM CDT Tue Aug 29, 2023



1. There is a danger of life-threatening storm surge inundation along portions of the Florida Gulf Coast where a Storm Surge Warning is in effect, including Tampa Bay and the Big Bend region of Florida. Inundation of 8 to 12 feet above ground level is expected somewhere between Chassahowitzka and Aucilla River. Residents in these areas should follow any advice given by local officials.

2. Hurricane conditions are expected within portions of the Hurricane Warning area along the Florida Gulf Coast, with the potential for destructive winds where the core of Idalia moves onshore. Strong winds will also spread inland across portions of northern Florida near the track of the center of Idalia.

3. Heavy rainfall is expected across portions of western Cuba and may produce areas of flash and urban flooding as well as landslides. Areas of flash and urban flooding, some of which may be locally significant, are expected across portions of the west coast of Florida, the Florida Panhandle, and southern Georgia beginning today into Wednesday, spreading into portions of the eastern Carolinas Wednesday into Thursday.



For more information go to [hurricanes.gov](https://hurricanes.gov)



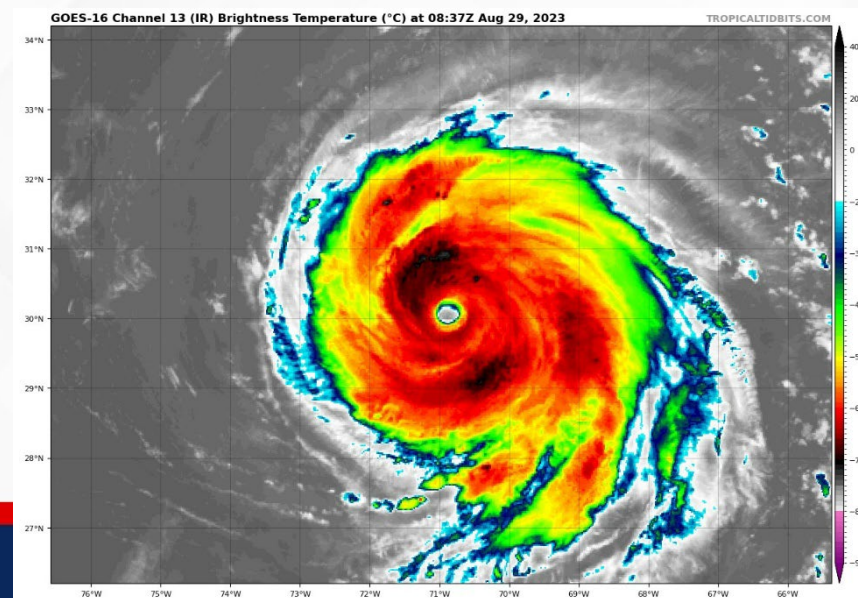
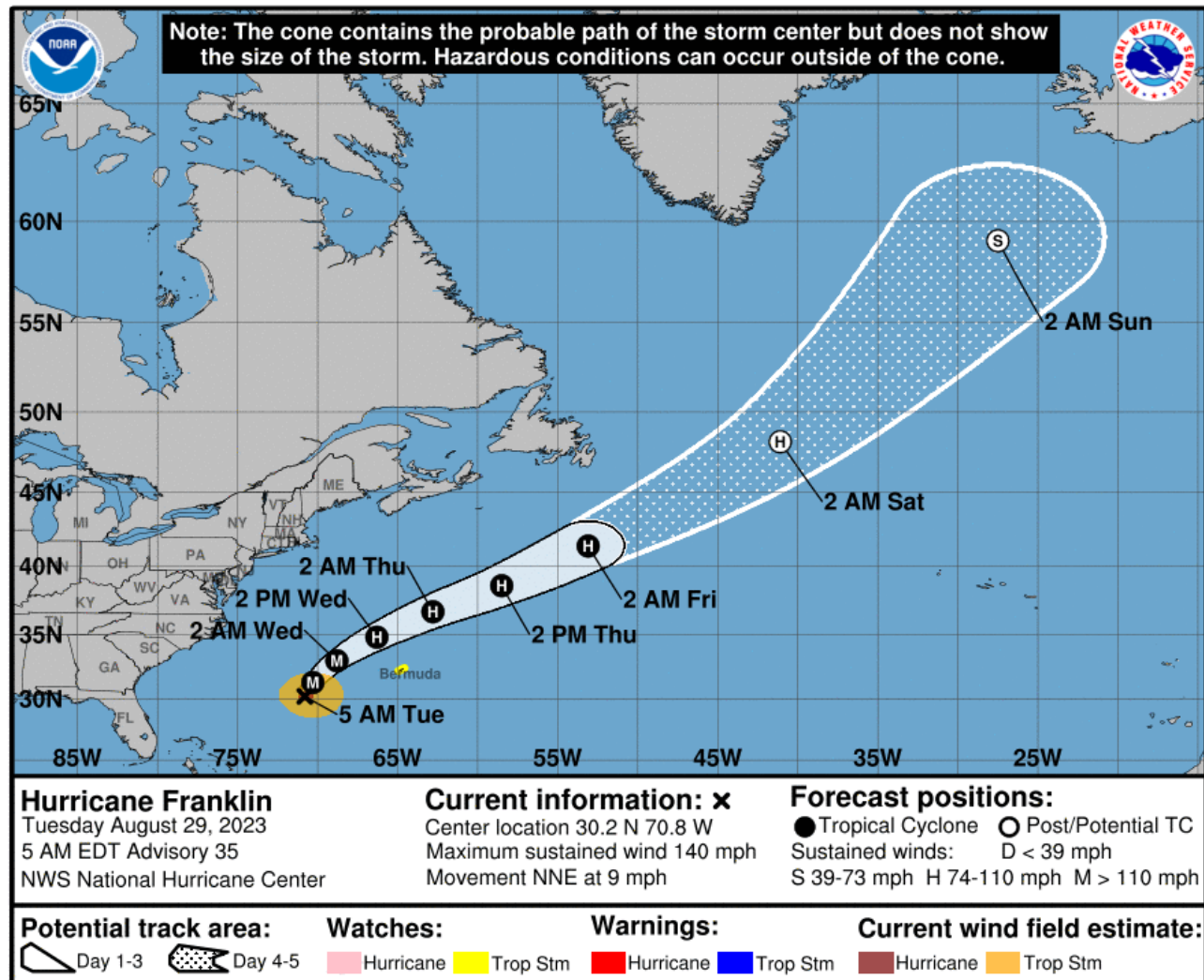
# Forecast Cone

## Major Hurricane Franklin ([LINK](#))

- **Location:** 385 miles WSW of Bermuda
- **Maximum Sustained Winds:** 140 mph; Category 4
- **Current Movement:** NNE at 9 mph
- **FL Watches/Warnings:** None

A north-northwestward to northeastward motion with a faster forward speed is expected during the next few days. On the forecast track, the center of Franklin is expected to pass well to the northwest of Bermuda. Franklin's maximum sustained winds have decreased to 140 but remains a formidable category 4 hurricane. Steady weakening is forecast during the next several days.

*Franklin poses no direct threat to Florida; however, and elevated risk of rip currents and wave heights will be possible along Atlantic Coast beaches over the next several days.*



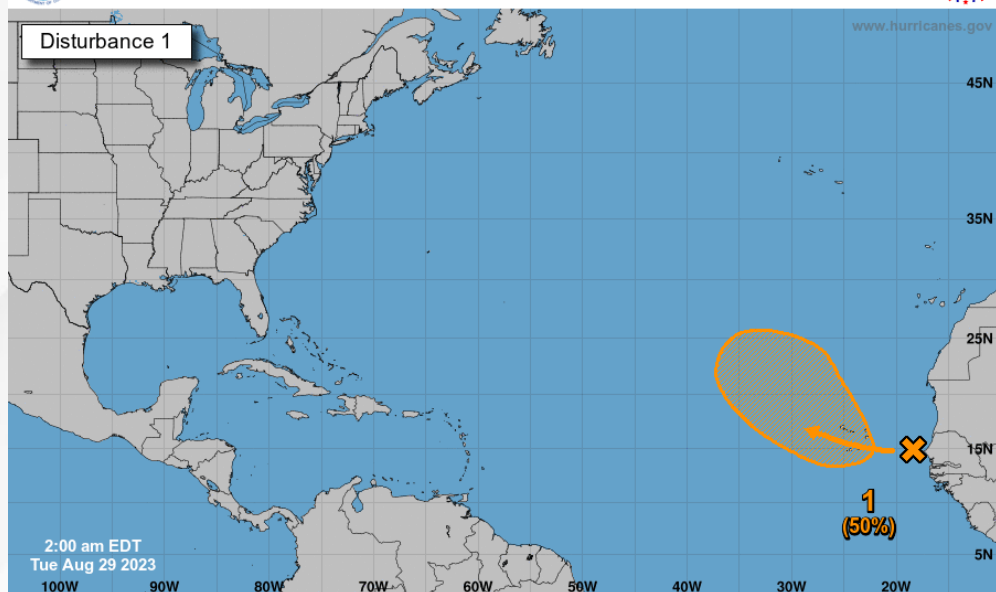




# Tropical Weather Outlook

Disturbance 1 – Eastern Tropical Atlantic ([LINK](#))

Seven-Day Graphical Tropical Weather Outlook  
National Hurricane Center Miami, Florida



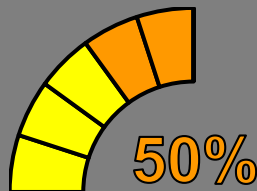
A tropical wave located near the west coast of Africa is producing disorganized showers and thunderstorms. Environmental conditions appear marginally conducive for gradual development of this system. A tropical depression could form later in the week as the system moves west-northwestward to northwestward across the eastern tropical Atlantic.

*This system poses no threat to Florida at this time.*

- \* Formation chance through 48 hours...**low...20%.**
- \* Formation chance through 7 days...**medium...50%.**



48 Hour Formation

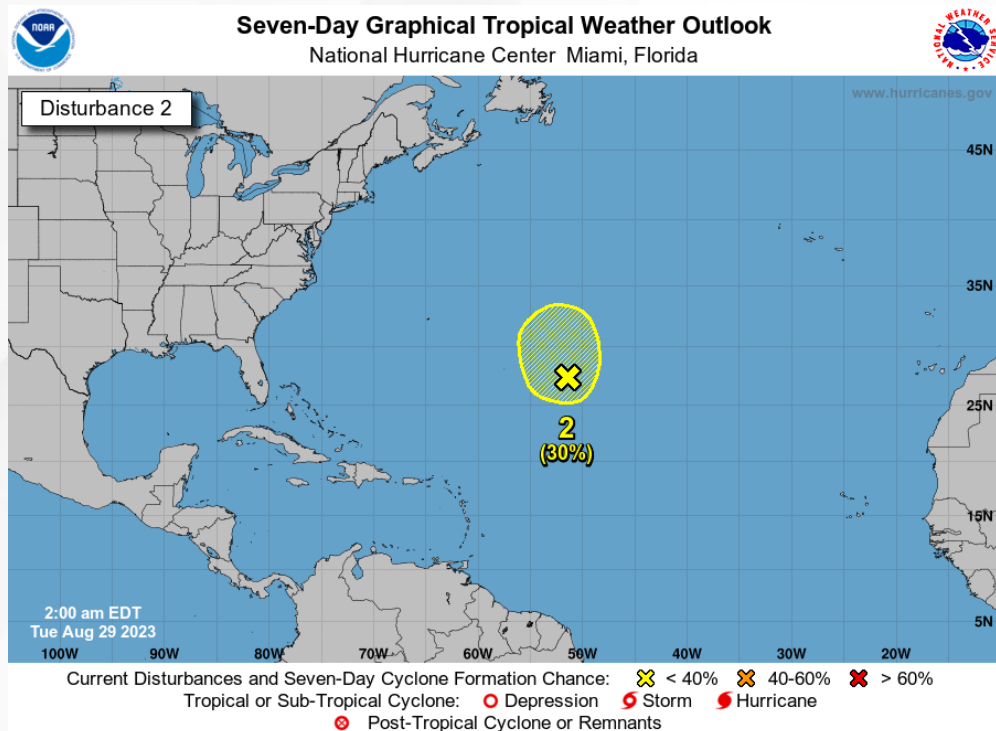


7 Day Formation



# Tropical Weather Outlook

Disturbance 2 (Invest 92L) – Central Subtropical Atlantic ([LINK](#))

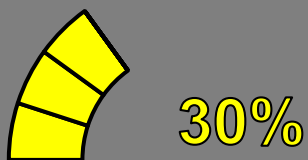


Showers and thunderstorms have recently become more concentrated with an area of low pressure located about 1000 miles northeast of the northern Leeward Islands. Recent satellite wind data indicates that its circulation has become better defined. Environmental conditions appear favorable for additional development over the next couple of days before becoming unfavorable by the latter part of this week as the system slowly drifts over the central subtropical Atlantic.

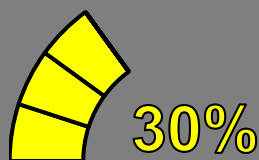
*This system poses no threat to Florida at this time.*

\* Formation chance through 48 hours...**low...30%.**

\* Formation chance through 7 days...**low...30%.**



48 Hour Formation



7 Day Formation



# Summary

## **Hurricane Idalia:**

- As of 5:00 AM EDT, Idalia was located about 175 miles southwest of the Dry Tortugas, Florida and is moving northward at 14 mph. A faster north-northeast motion is expected later today and Wednesday.
- On the forecast track, the center of Idalia is forecast to move over the eastern Gulf of Mexico later, reach the Gulf Coast of Florida within the Hurricane Warning area on Wednesday, and move close to the Carolina coastline on Thursday.
- Maximum sustained winds have increased to 75 mph, making Idalia a Category 1 hurricane. Rapid intensification is likely through landfall, and Idalia is forecast to become an extremely dangerous major hurricane before landfall on Wednesday.
- Computer models indicate Idalia will continue to strengthen as it moves over the warm waters of the eastern Gulf of Mexico, before making landfall along the Florida Big Bend or Nature Coast Wednesday morning.
- Tropical Storm Watches/Warnings, Hurricane Watches/Warnings, and Storm Surge Watches/Warnings have been continue across the Big Bend, Northeast and West Florida.

## **Major Hurricane Franklin:**

- As of 5:00 AM EDT Monday, Franklin was located about 385 miles west-southwest of Bermuda moving north-northeastward at 9 mph.
- Franklin remains a strong Category 4 Hurricane with maximum sustained winds near 140 mph.
- A north-northeastward to northeastward motion with a faster forward speed is expected during the next few days.
- Steady weakening is forecast during the next several days.
- *Franklin poses no direct threat to Florida; however, long-period ocean swells and an elevated risk for rip currents can be anticipated along Florida East Coast beaches.*

## **Eastern Tropical Atlantic:**

- A tropical wave is producing disorganized showers and thunderstorms just off the west coast Africa.
- Environmental conditions appear marginally conducive for gradual development of this system, and a tropical depression could form later this week while the system moves west-northwestward to northwestward across the eastern tropical Atlantic.
- There is a 50% (medium) chance of development over the next 7 days.
- *This system poses no threat to Florida at this time.*

## **Central Subtropical Atlantic (Invest 92L):**

- Showers and thunderstorms have recently become more concentrated with an area of low pressure about 1000 miles northeast of the northern Leeward Islands. Recent satellite wind data indicates its circulation has become better defined.
- Environmental conditions appear favorable for additional development over the next couple of days before becoming unfavorable by the later part of the week as its drifts slowly over the central subtropical Atlantic.
- There is a 30% (low) chance of development over the next 7 days.
- *This system poses no threat to Florida at this time.*

The next briefing package will be issued on Tuesday Morning. For the latest information, please visit the [National Hurricane Center website](#).





# Summary

## Florida Outlook:

- **Hurricane Warning:** Coastal Franklin, coastal Wakulla, Jefferson, Madison, Taylor, Hamilton, Suwanee, Lafayette, Dixie, Columbia, Gilchrist, Levy, western Alachua, western Marion, Citrus, Sumter, Hernando, Pasco, Hillsborough, Pinellas, Manatee
- **Hurricane Watch:** Eastern Alachua, Baker, Bradford, Leon, central Marion, Sarasota, Union, inland Wakulla
- **Tropical Storm Warning:** Gulf, Liberty, inland Franklin, inland Wakulla, Gadsden, Leon, Nassau, Duval, Baker, Union, Bradford, Clay, St. Johns, Putnam, Flagler, central Marion, eastern Marion, Volusia, Lake, Seminole, Orange, Brevard, Osceola, Polk, Hardee, Desoto, Sarasota, Charlotte, Lee, coastal Collier
- **Tropical Storm Watch:** Inland Collier and Lower Keys
- **Storm Surge Warning:** Englewood northward (Charlotte/Sarasota border) to Indian Pass (Franklin/Gulf border), including Tampa Bay
- **Storm Surge Watch:** Englewood (Charlotte/Sarasota border) to Chokoloskee (Collier/Monroe border), including Charlotte Harbor
- Tropical storm-force wind probabilities continue to increase along the Florida West Coast, with tropical impacts beginning as early as Tuesday afternoon in Southwest Florida and expanding northward throughout the night.
- The most likely timeframe for deteriorating conditions across the state will be Tuesday overnight from south to north along the Florida Gulf Coast, and early Wednesday morning across Northeast Florida.
- Computer models show Idalia will continue to intensify over the warm eastern Gulf of Mexico waters through landfall, becoming a major hurricane by late Tuesday or Tuesday night.
- Storm surge values reaching 8-12' will be possible from the Aucilla River to Chassahowitzka, 6-9' from Chassahowitzka to the Anclote River, 4-7' from the Ochlockonee River to the Aucilla River and Tampa Bay.
- Storm surge will also be possible southward along the Florida Gulf Coast from Englewood through Charlotte Harbor, from Mexico beach to Indian Pass, along the Northeast coast from the Mouth of the St. Mary's River to the Flagler/Volusia County line, and the Florida Keys.
- There is a Slight Risk (level 2 of 5) for Severe Weather along the Florida Big Bend and through West-Central Florida as isolated tropical tornadoes will be possible within Idalia's outer tropical rainbands as the system approaches the Gulf Coast. A Marginal Risk (level 1 of 5) for Severe Weather extends across North Florida and throughout the Peninsula to the Florida Keys.
- The Slight Risk (level 2 of 5) for Severe Weather will then shift inland over the I-75 corridor and Northeast Florida on Wednesday as Idalia continues to push inland through the Suwannee River Valley. The Marginal Risk (level 1 of 5) for Severe Weather continues for the Florida Big Bend and across Central Florida.
- A Moderate Risk (level 3 of 4) for Flash Flooding can be expected on Tuesday along the Big Bend and Nature Coast ahead of tropical moisture pushing northward and Idalia bringing heavy and intense rainfall to the Gulf Coast. The Slight Risk (level 2 of 4) for Flash Flooding extends along North Florida and through Southwest Florida, with a Marginal Risk (level 1 of 4) statewide.
- The Moderate Risk (level 3 of 4) will shift northeastward across the Suwannee River Valley and Northeast Florida as Idalia continues to push inland, and a Slight Risk (level 2 of 4) can be expected along the Big Bend and through West-Central Florida.
- A Flood Watch has been issued along portions of the Big Bend, Nature Coast, and West-Central Florida as Tropical Storm Idalia is expected to bring intense rainfall across the Florida Gulf Coast, which may lead to localized flash flooding.
- River Flood Warnings will go into effect Wednesday afternoon/evening and Thursday morning for multiple Nature Coast and Suwannee River Valley rivers as rainfall associated with Idalia is forecast to rise water levels into minor flood stage. The Alafia River at Riverview is forecast to rise into major flood stage Wednesday morning due to associated storm surge along lower portions of the river.

The next briefing package will be issued on Tuesday Morning. For the latest information, please visit the [National Hurricane Center website](#).



# Tropical Update



Created by:

**Kennedy Tartt, Assistant State Meteorologist**

**[Kennedy.Tartt@em.myflorida.com](mailto:Kennedy.Tartt@em.myflorida.com)**

**State Meteorological Support Unit**

**Florida Division of Emergency Management**

Users wishing to subscribe (approval pending) to this distribution list, register at:

[https://public.govdelivery.com/accounts/FLDEM/subscriber/new?topic\\_id=SERT\\_Met\\_Tropics](https://public.govdelivery.com/accounts/FLDEM/subscriber/new?topic_id=SERT_Met_Tropics).

Other reports available for subscription are available at:

<https://public.govdelivery.com/accounts/FLDEM/subscriber/new?preferences=true>