



Tropical Update



5:30 PM EDT

Monday, August 28, 2023

Tropical Storm Idalia, Major Hurricane Franklin & Eastern Tropical Atlantic (50%)

This update is intended for government and emergency response officials, and is provided for informational and situational awareness purposes only. Forecast conditions are subject to change based on a variety of environmental factors. For additional information, or for any life safety concerns with an active weather event please contact your County Emergency Management or Public Safety Office, local National Weather Service forecast office, or visit the National Hurricane Center website at www.hurricanes.gov.



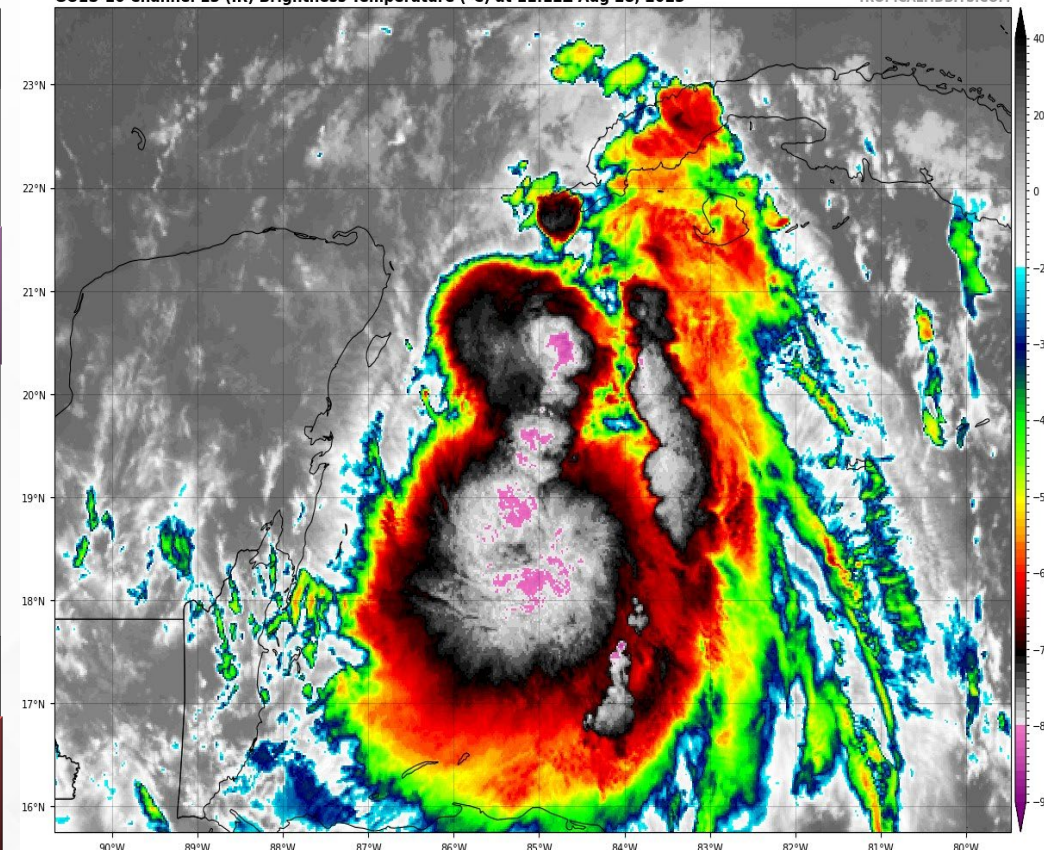
Tropical Storm Idalia

5:30 PM EDT Monday: Florida Threats & Changes Since Last Packet

	MINIMAL	Low	MODERATE	HIGH	EXTREME
 WINDS					
 STORM SURGE					
 FLASH FLOODING					
 TORNADOES					
	Low	MODERATE	HIGH		
 RIP CURRENTS					

GOES-16 Channel 13 (IR) Brightness Temperature (°C) at 11:12Z Aug 28, 2023

TROPICALIDBITS.COM



Overview/Recent Changes:

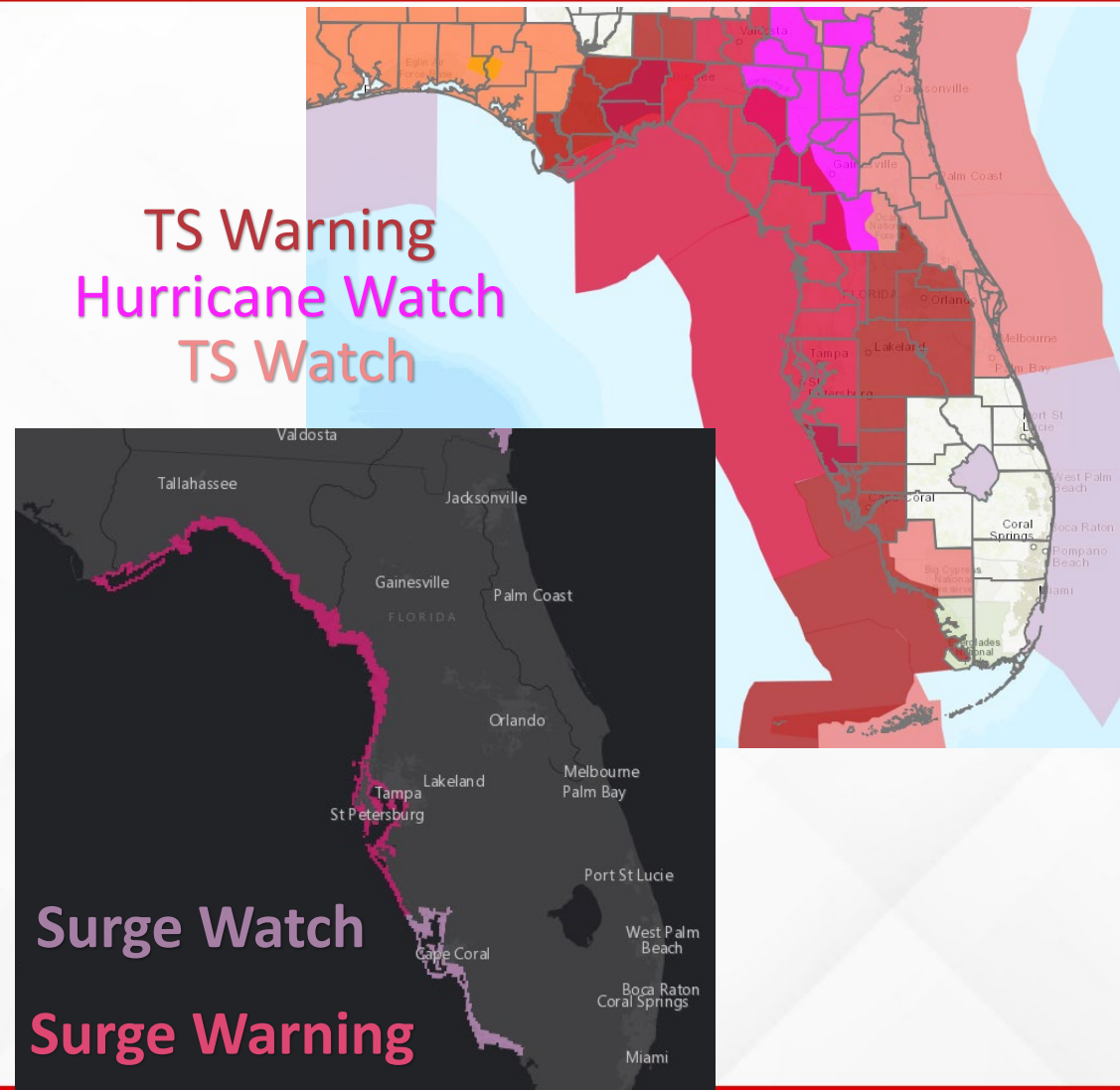
With the 5:00 PM EDT Advisory, Hurricane and Storm Surge Warnings have been extended westward in the Big Bend and further inland in Central Florida. Idalia continues to intensify as it approaches the western tip of Cuba, with maximum sustained winds now near 70 mph. Rapid strengthening is predicted over the next day or so. Idalia is forecast to become a hurricane this evening or tonight and a dangerous major hurricane over the northeastern Gulf of Mexico late Tuesday or Tuesday night. Additional Wind and Surge Watches may be upgraded to Warnings today.



Current Watches/Warnings

As of 5:00 PM EDT Monday

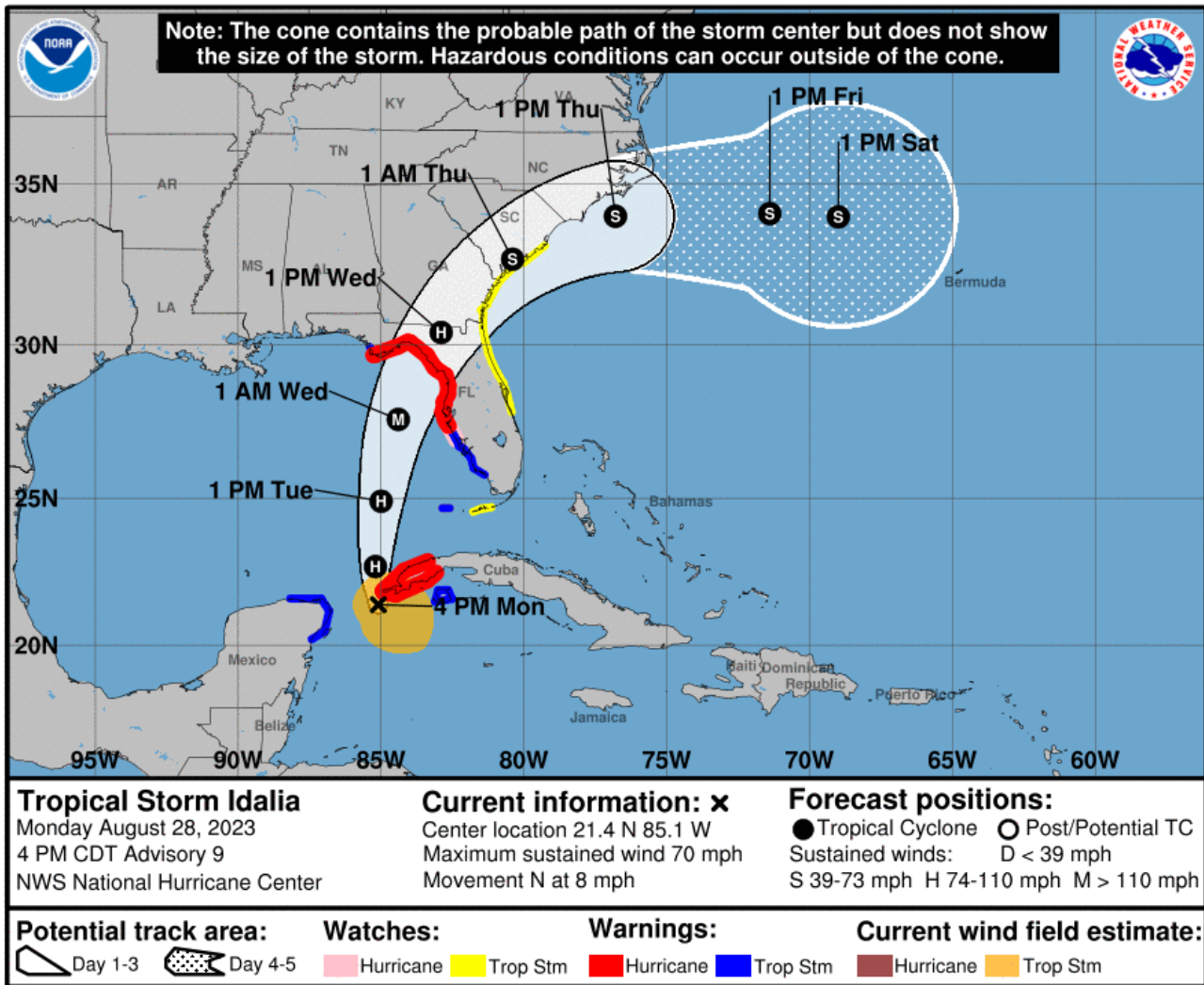
- **Hurricane Warning:**
 - Citrus, Dixie, coastal Franklin, Hernando, Hillsborough, Jefferson, Lafayette, Levy, Madison, Manatee, Pasco, Pinellas, Sumter, Taylor, coastal Wakulla, western Alachua, western Marion, Suwannee, Gilchrist
- **Hurricane Watch:**
 - Eastern Alachua, Baker, Bradford, Columbia, Hamilton, central Marion, Union
- **Tropical Storm Warning:**
 - Charlotte, coastal Collier, DeSoto, Hardee, Lake, Lee, Leon, Liberty, Polk, Sarasota, inland Wakulla, inland Franklin, Gulf, Osceola, Orange, Seminole, and the Dry Tortugas
- **Tropical Storm Watch:**
 - Brevard, Clay, inland Collier, Duval, Flagler, eastern Marion, Nassau, Putnam, St. Johns, Volusia, and the Lower Keys
- **Storm Surge Warning:**
 - Indian Pass (Franklin/Gulf border) to Middle of Longboat Key (Sarasota/Manatee border), including Tampa Bay
- **Storm Surge Watch:**
 - Englewood (Charlotte/Sarasota border) to Chokoloskee (Collier/Monroe border)





Forecast Cone

Tropical Storm Idalia ([LINK](#))



- **Location:** 265 miles SSW of the Dry Tortugas
- **Maximum Sustained Winds:** 70 mph
- **Current Movement:** N at 8 mph
- **FL Watches/Warnings:**
 - **Hurricane Warning:** Franklin to Manatee County and Madison to Sumter
 - **Hurricane Watch:** Suwannee Valley
 - **Tropical Storm Warning:** Gulf to Gadsden county, inland Central Florida extending to Lee County, Dry Tortugas (Monroe)
 - **Tropical Storm Watch:** Nassau to Brevard County and Clay to east Marion, Collier, Lower Keys

A northward motion is expected through tonight, followed by a fast north-northeast motion on Tuesday and Wednesday. On the forecast track, the center of Idalia is forecast to pass near or over western Cuba tonight, over the extreme southeastern Gulf of Mexico by early Tuesday, and reach the Gulf Coast of Florida on Wednesday. Rapid strengthening is predicted during the next day or so. Idalia is forecast to become a hurricane this evening or tonight and a major hurricane over the northeastern Gulf of Mexico late Tuesday or Tuesday night.

Additional Watches may be upgraded to Warnings later today.

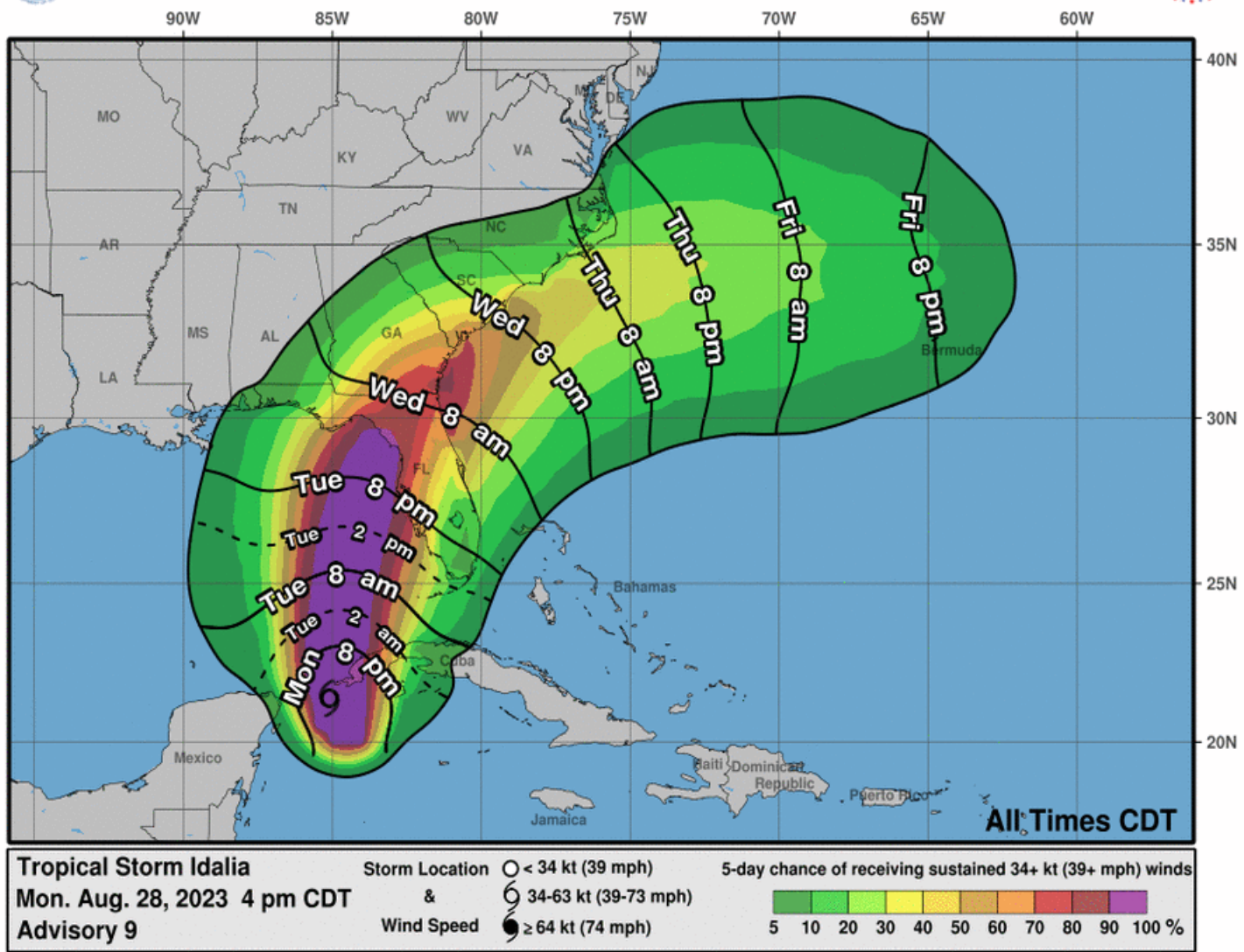


Tropical Storm-Force Wind Probabilities

Tropical Storm Idalia



Most Likely Arrival Time of Tropical-Storm-Force Winds



- Key West – 30% (+1%)
- Naples – 51% (+1%)
- Tampa – 88% (+3%)
- Orlando – 39% (+6%)
- Cedar Key – 96% (+12%)
- Tallahassee – 53% (+12%)
- St. Marks – 62% (+13%)
- Apalachicola – 66% (+11%)
- Panama City – 45% (+7%)
- Jacksonville – 74% (+14%)

The numbers in parenthesis show the change in probability since the previous briefing packet.

Probabilities for tropical storm-force winds continue to increase along the Florida Big Bend, Nature Coast, and West-Central Florida Coast. Tropical storm-force wind probabilities continue to increase along the Florida West Coast, with tropical impacts beginning as early as Tuesday morning in Southwest Florida. The most likely timeframe for deteriorating conditions across the state will be Tuesday evening and overnight from south to north along the Florida Gulf Coast, and early Wednesday morning across Northeast Florida.



Tropical Storm-Force Wind Probabilities

Tropical Storm Idalia

County	Tropical Storm-Force (>39 mph)		Strong Tropical Storm-Force (>58 mph)	
	Earliest(hrs)	Most Likely(hrs)	Earliest(hrs)	Most Likely(hrs)
Alachua	08/30 12AM(31)	08/30 5AM(36)	08/30 4AM(35)	08/30 7AM(38)
Baker	08/30 2AM(33)	08/30 7AM(38)	08/30 6AM(37)	08/30 9AM(40)
Bay	08/29 10PM(29)	08/30 5AM(36)	08/30 2AM(33)	08/30 7AM(38)
Bradford	08/30 1AM(32)	08/30 5AM(36)	08/30 4AM(35)	08/30 8AM(39)
Brevard	08/29 8PM(27)	08/30 4AM(35)	n/a	n/a
Broward	08/29 5AM(12)	08/29 8PM(27)	n/a	n/a
Calhoun	08/30 12AM(31)	08/30 7AM(38)	08/30 4AM(35)	08/30 9AM(40)
Charlotte	08/29 9AM(16)	08/29 5PM(24)	08/29 4PM(23)	08/29 9PM(28)
Citrus	08/29 6PM(25)	08/29 11PM(30)	08/29 11PM(30)	08/30 3AM(34)
Clay	08/30 1AM(32)	08/30 6AM(37)	08/30 5AM(36)	08/30 9AM(40)
Collier	08/29 5AM(12)	08/29 5PM(24)	08/29 1PM(20)	08/29 7PM(26)
Columbia	08/30 2AM(33)	08/30 6AM(37)	08/30 5AM(36)	08/30 9AM(40)
DeSoto	08/29 1PM(20)	08/29 10PM(29)	08/29 5PM(24)	08/29 11PM(30)
Dixie	08/30 12AM(31)	08/30 5AM(36)	08/30 4AM(35)	08/30 7AM(38)
Duval	08/30 3AM(34)	08/30 8AM(39)	08/30 7AM(38)	08/30 10AM(41)
Escambia	08/29 7PM(26)	08/30 1AM(32)	n/a	n/a
Flagler	08/30 2AM(33)	08/30 7AM(38)	08/30 6AM(37)	08/30 10AM(41)
Franklin	08/29 8PM(27)	08/30 1AM(32)	08/30 12AM(31)	08/30 4AM(35)
Gadsden	08/30 1AM(32)	08/30 7AM(38)	08/30 5AM(36)	08/30 9AM(40)
Gilchrist	08/30 12AM(31)	08/30 5AM(36)	08/30 4AM(35)	08/30 7AM(38)
Glades	08/29 9AM(16)	08/29 10PM(29)	n/a	n/a
Gulf	08/29 8PM(27)	08/30 1AM(32)	08/30 12AM(31)	08/30 4AM(35)
Hamilton	08/30 3AM(34)	08/30 8AM(39)	08/30 7AM(38)	08/30 10AM(41)
Hardee	08/29 1PM(20)	08/29 10PM(29)	08/29 5PM(24)	08/29 11PM(30)
Hendry	08/29 5AM(12)	08/29 8PM(27)	n/a	n/a
Hernando	08/29 5PM(24)	08/29 9PM(28)	08/29 10PM(29)	08/30 1AM(32)
Highlands	08/29 1PM(20)	08/29 11PM(30)	n/a	n/a
Hillsborough	08/29 7PM(26)	08/29 10PM(29)	08/29 10PM(29)	08/30 1AM(32)
Holmes	08/29 9PM(28)	08/30 4AM(35)	n/a	n/a
Indian River	08/29 3PM(22)	08/30 2AM(33)	n/a	n/a
Jackson	08/29 11PM(30)	08/30 7AM(38)	08/30 4AM(35)	08/30 9AM(40)
Jefferson	08/29 10PM(29)	08/30 4AM(35)	08/30 2AM(33)	08/30 7AM(38)
Lafayette	08/30 1AM(32)	08/30 6AM(37)	08/30 4AM(35)	08/30 8AM(39)
Lake	08/29 8PM(27)	08/30 1AM(32)	08/29 11PM(30)	08/30 3AM(34)
Lee	08/29 12PM(19)	08/29 5PM(24)	08/29 4PM(23)	08/29 9PM(28)
Leon	08/30 1AM(32)	08/30 7AM(38)	08/30 5AM(36)	08/30 9AM(40)
Levy	08/29 8PM(27)	08/30 1AM(32)	08/30 1AM(32)	08/30 5AM(36)
Liberty	08/30 12AM(31)	08/30 5AM(36)	08/30 3AM(34)	08/30 7AM(38)
Madison	08/30 2AM(33)	08/30 7AM(38)	08/30 6AM(37)	08/30 9AM(40)
Manatee	08/29 1PM(20)	08/29 7PM(26)	08/29 6PM(25)	08/29 11PM(30)
Marion	08/29 11PM(30)	08/30 4AM(35)	08/30 2AM(33)	08/30 6AM(37)
Martin	08/29 11AM(18)	08/30 12AM(31)	n/a	n/a
Miami-Dade	08/29 2AM(9)	08/29 5PM(24)	n/a	n/a
Monroe	08/29 6AM(13)	08/29 3PM(22)	n/a	n/a
Nassau	08/30 5AM(36)	08/30 10AM(41)	08/30 8AM(39)	08/30 12PM(43)
Okaloosa	08/29 7PM(26)	08/30 1AM(32)	n/a	n/a
Okeechobee	08/29 11AM(18)	08/29 11PM(30)	n/a	n/a
Orange	08/29 8PM(27)	08/30 3AM(34)	08/30 12AM(31)	08/30 4AM(35)
Osceola	08/29 8PM(27)	08/30 3AM(34)	08/30 12AM(31)	08/30 4AM(35)



Tropical Storm-Force Wind Probabilities

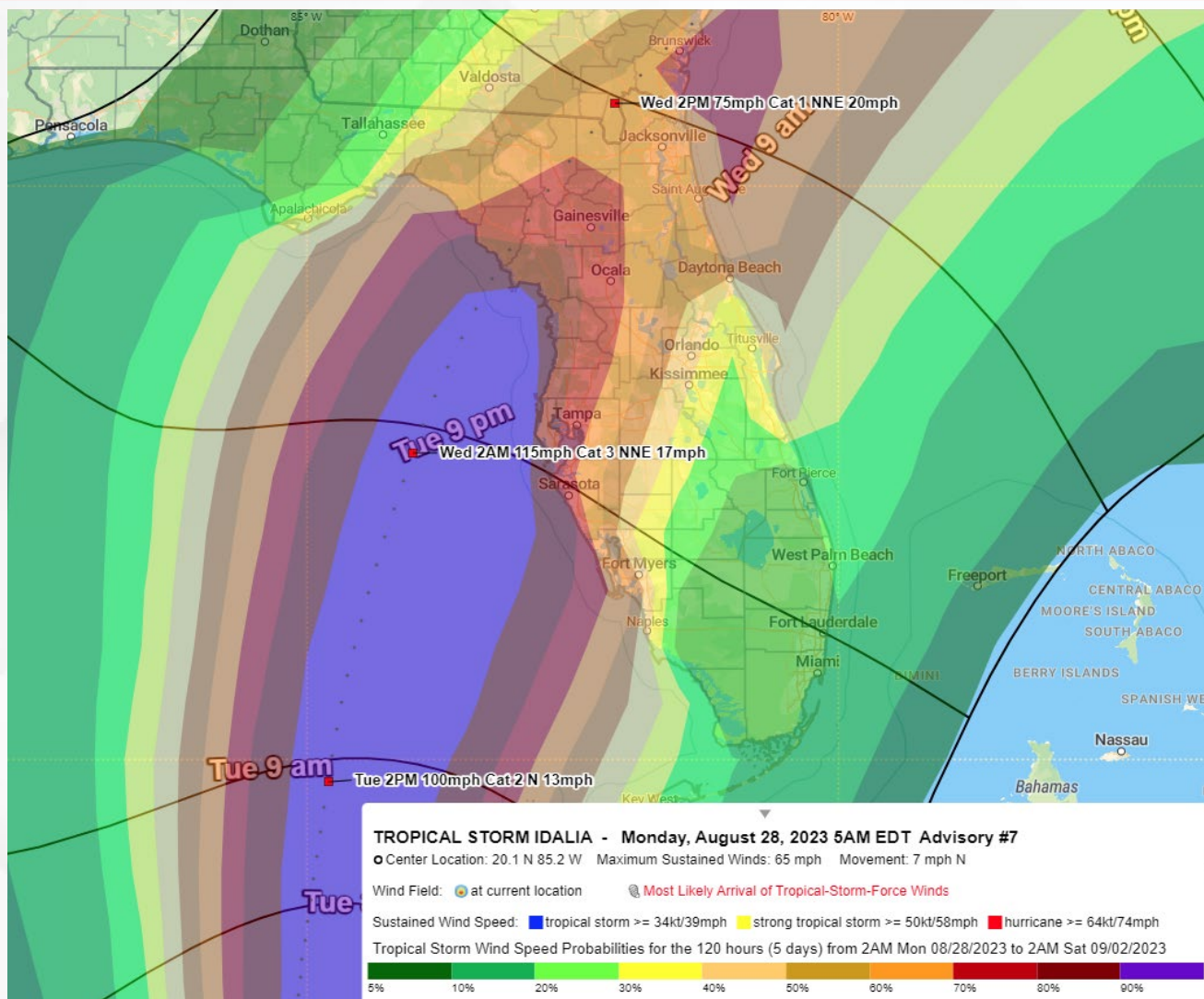
Tropical Storm Idalia

Palm Beach	08/29 9AM(16)	08/29 10PM(29)	n/a	n/a
Pasco	08/29 5PM(24)	08/29 9PM(28)	08/29 10PM(29)	08/30 1AM(32)
Pinellas	08/29 3PM(22)	08/29 8PM(27)	08/29 8PM(27)	08/29 11PM(30)
Polk	08/29 5PM(24)	08/30 12AM(31)	08/29 9PM(28)	08/30 2AM(33)
Putnam	08/30 1AM(32)	08/30 6AM(37)	08/30 5AM(36)	08/30 9AM(40)
Santa Rosa	08/29 7PM(26)	08/30 1AM(32)	n/a	n/a
Sarasota	08/29 1PM(20)	08/29 7PM(26)	08/29 6PM(25)	08/29 11PM(30)
Seminole	08/29 9PM(28)	08/30 4AM(35)	08/30 2AM(33)	08/30 6AM(37)
St. Johns	08/30 2AM(33)	08/30 7AM(38)	08/30 6AM(37)	08/30 10AM(41)
St. Lucie	08/29 11AM(18)	08/30 12AM(31)	n/a	n/a
Sumter	08/29 8PM(27)	08/30 12AM(31)	08/29 11PM(30)	08/30 3AM(34)
Suwannee	08/30 2AM(33)	08/30 6AM(37)	08/30 5AM(36)	08/30 9AM(40)
Taylor	08/29 9PM(28)	08/30 2AM(33)	08/30 2AM(33)	08/30 6AM(37)
Union	08/30 2AM(33)	08/30 7AM(38)	08/30 6AM(37)	08/30 9AM(40)
Volusia	08/29 9PM(28)	08/30 4AM(35)	08/30 2AM(33)	08/30 6AM(37)
Wakulla	08/29 10PM(29)	08/30 4AM(35)	08/30 2AM(33)	08/30 7AM(38)
Walton	08/29 7PM(26)	08/30 4AM(35)	n/a	n/a
Washington	08/29 7PM(26)	08/30 4AM(35)	08/30 2AM(33)	08/30 9AM(40)



Tropical Storm-Force Wind Timing

Tropical Storm Idalia



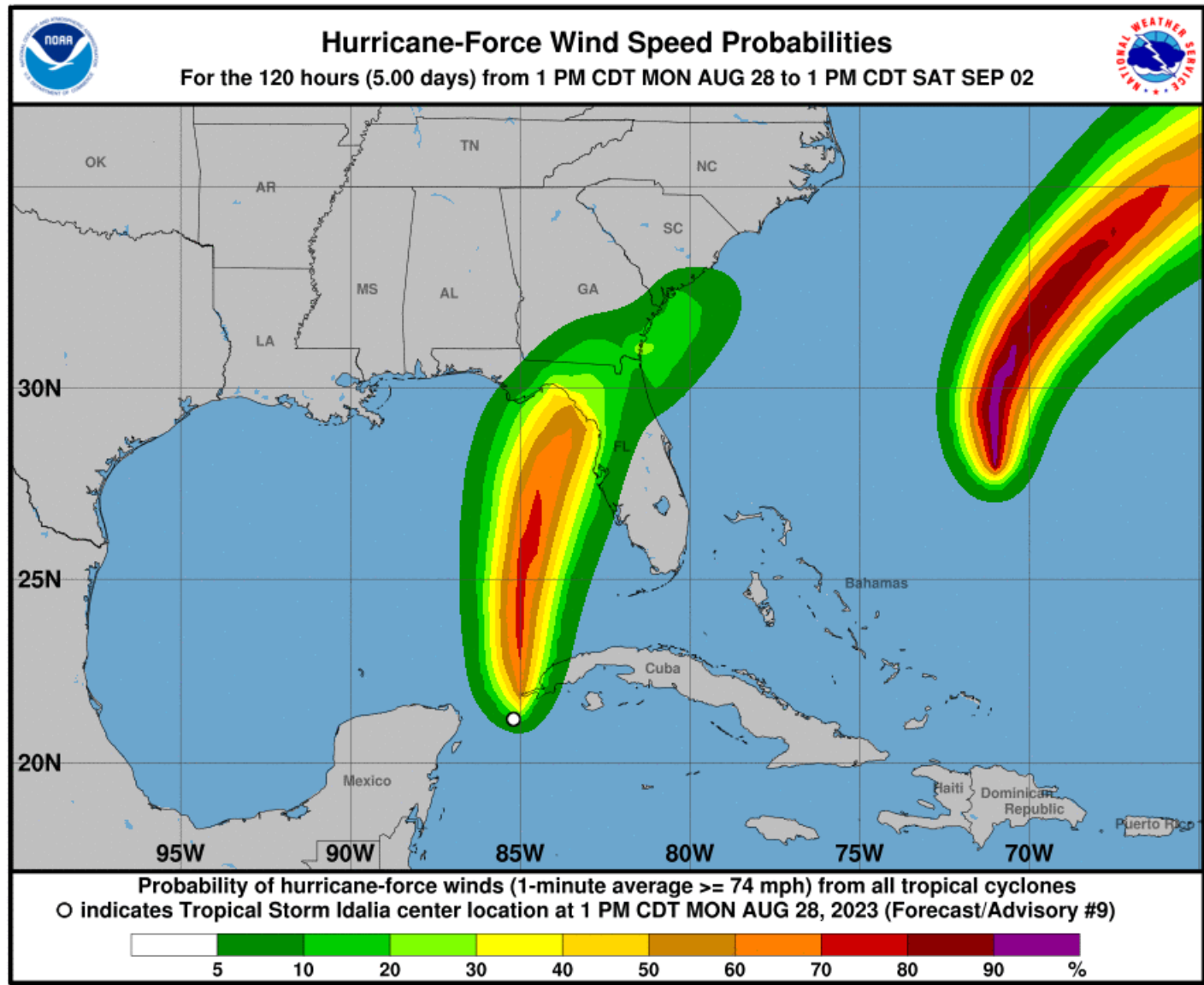
Tropical storm-force wind probabilities continue to increase along the Florida West Coast, with tropical impacts beginning as early as Tuesday morning in Southwest Florida.

The most likely timeframe for deteriorating conditions across the state will be Tuesday evening and overnight from south to north along the Florida Gulf Coast, and early Wednesday morning across Northeast Florida.



Hurricane-Force Wind Probabilities

Tropical Storm Idalia



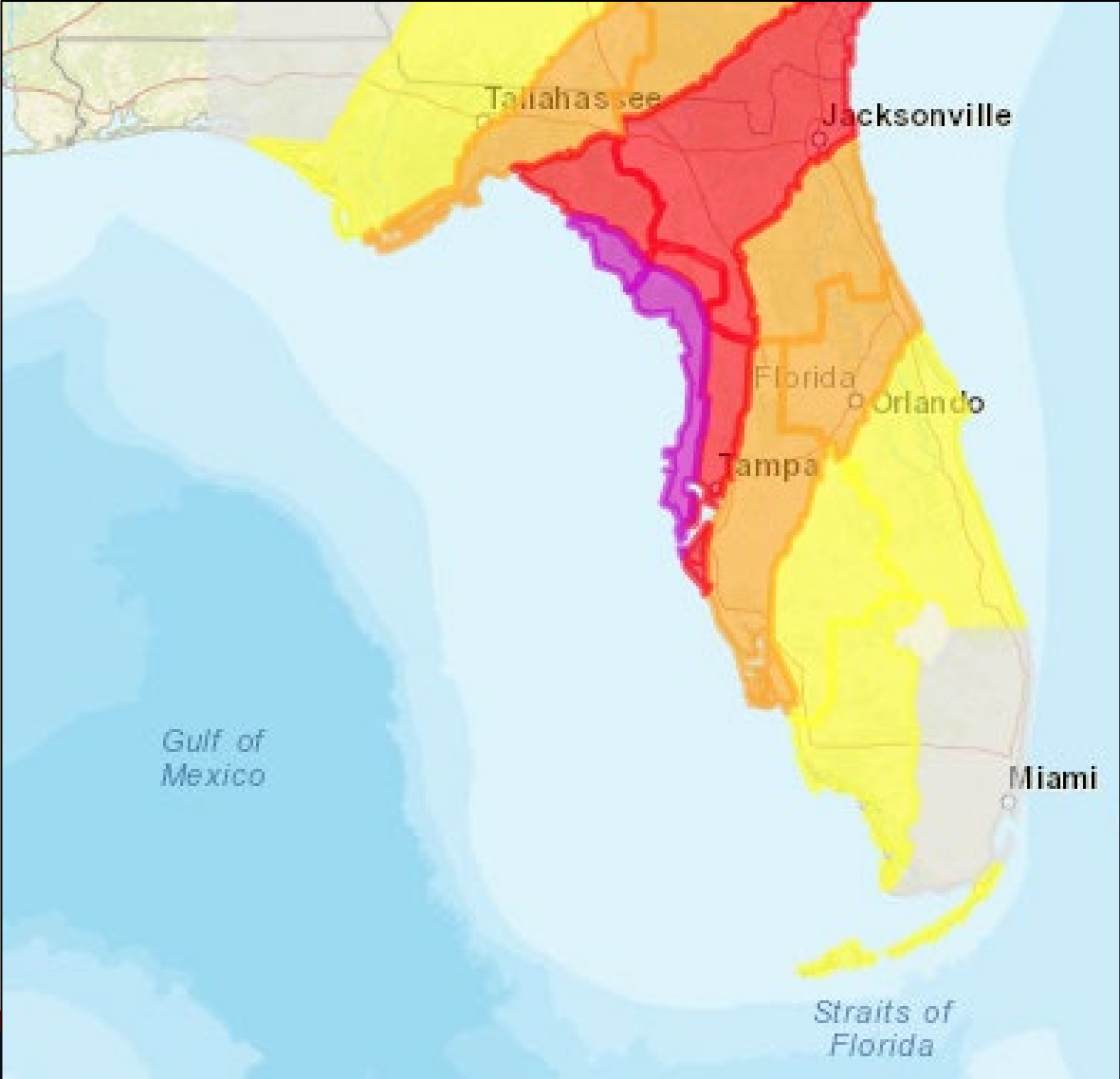
Hurricane-force wind speed probabilities continue to rise along the Florida Big Bend, Nature Coast, and West Florida Coast. There is now a 3 and 4 in 10 chance of portions of the Florida Big Bend experiencing hurricane conditions; these probabilities are forecast to rise as Idalia moves over the eastern Gulf of Mexico over the next 24-36 hours.

- Tampa – 18%
- Cedar Key – 48%
- Gainesville – 15%
- Jacksonville – 10%
- St. Marks – 15%
- Tallahassee – 9%
- Apalachicola – 15%
- Panama City – 15%



Damaging Wind Threat Overview

Tropical Storm Idalia



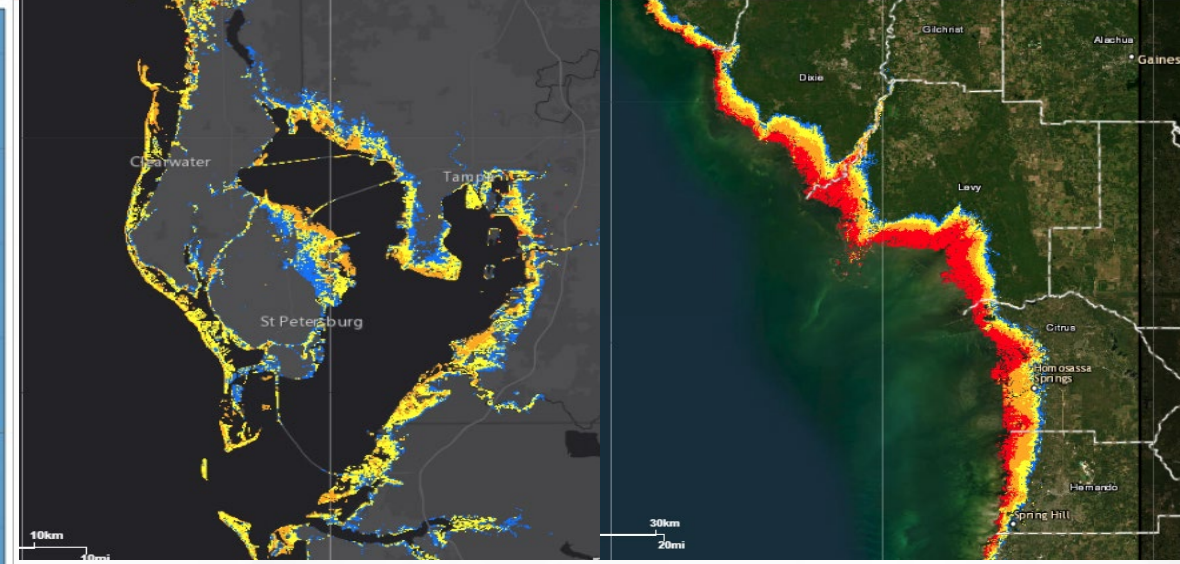
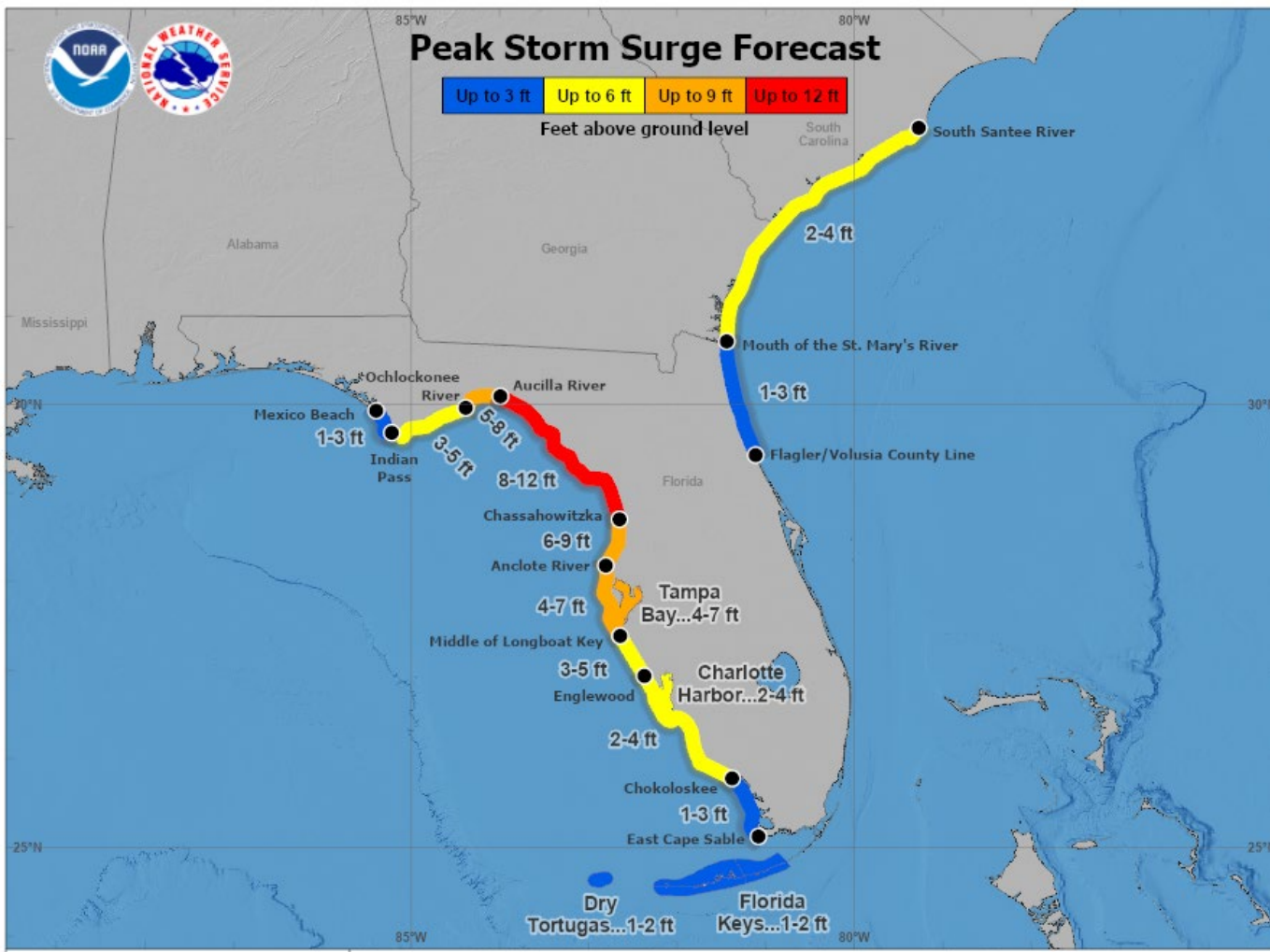
Wind Threat
Potential for wind greater than 110 mph
Potential for wind 74 to 110 mph
Potential for wind 58 to 73 mph
Potential for wind 39 to 57 mph
Wind less than 39 mph

The damaging wind threat will be greatest along the immediate Big Bend shoreline, Nature Coast, and far West-Central Florida coastline. Additional chances for damaging winds will reside along and east of Idalia's track, favoring the West-Central Florida coastline and into portions of the Suwannee River Valley (mainly along and north of I-4). Locally higher wind gusts will be possible within more organized rain bands and thunderstorm activity.



Expected Storm Surge Values

From the National Hurricane Center



Peak storm surge will be greatest along the eastern Forgotten Coast and Nature Coast from the Aucilla River to Chassahowitzka with 8-12' forecast. 6-9' is currently expected from Chassahowitzka to the Anclote River with 4-7' from Ochlockonee River to the Aucilla River and from the Anclote River to Middle of Longboat Key. Lower surge values of up 3-5' are forecast from the Middle of Longboat Key to Englewood and from the Ochlockonee River to Indian Pass. Storm surge will also be possible southward along the Florida Gulf Coast from Englewood through Charlotte Harbor, from Mexico Beach to Indian Pass, along the Northeast coast from the Mouth of the St. Mary's River to the Flagler/Volusia County line, and the Florida Keys.

Tropical Storm Idalia
Monday August 28, 2023
04 PM CDT Advisory 09
NWS National Hurricane Center

User Notes: Water levels along the immediate coast could reach the following heights above ground level within the indicated areas. Elevated water levels will likely be accompanied by large and destructive waves. Colors are determined by the highest values in the associated forecast peak surge range. Values shown on this graphic are inclusive of tide.



Key Messages

Tropical Storm Idalia



Key Messages for Tropical Storm Idalia

Advisory 9: 4:00 PM CDT Mon Aug 28, 2023

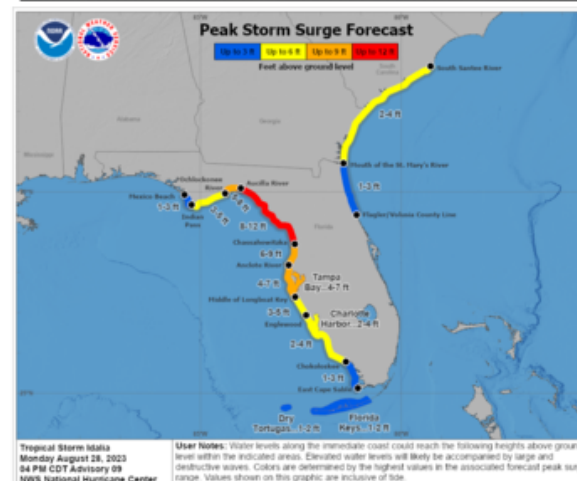
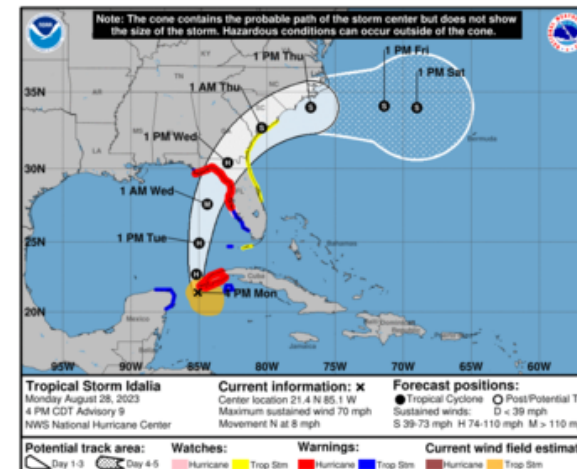


1. There is a danger of life-threatening storm surge inundation along portions of the Florida Gulf Coast where a Storm Surge Warning is in effect, including Tampa Bay and the Big Bend region of Florida. Inundation of 8 to 12 feet above ground level is expected somewhere between Chassahowitzka and Aucilla River. Residents in these areas should follow any advice given by local officials.

2. Hurricane conditions are expected within portions of the Hurricane Warning area along the Florida Gulf Coast, with the potential for destructive winds where the core of Idalia moves onshore. Strong winds will also spread inland across portions of northern Florida near the track of the center of Idalia.

3. Areas of flash and urban flooding, some of which may be locally significant, are expected across portions of the west coast of Florida, the Florida Panhandle, and southern Georgia Tuesday into Wednesday, spreading into portions of the eastern Carolinas Wednesday into Thursday.

4. Hurricane-force winds are expected across portions of far western Cuba tonight. Heavy rainfall is also expected across portions of western Cuba and may produce areas of flash and urban flooding as well as landslides.



For more information go to hurricanes.gov

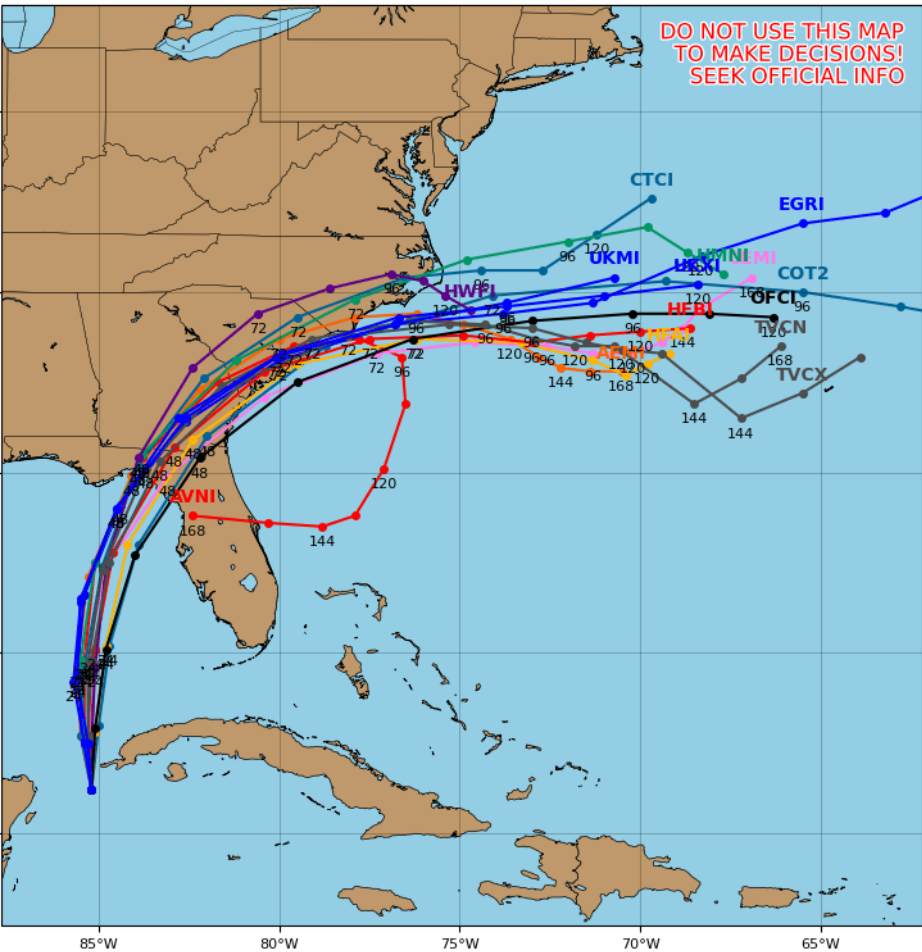


Model Forecasts – Next 5 Days

Tropical Storm Idalia

Tropical Storm IDALIA Model Track Guidance

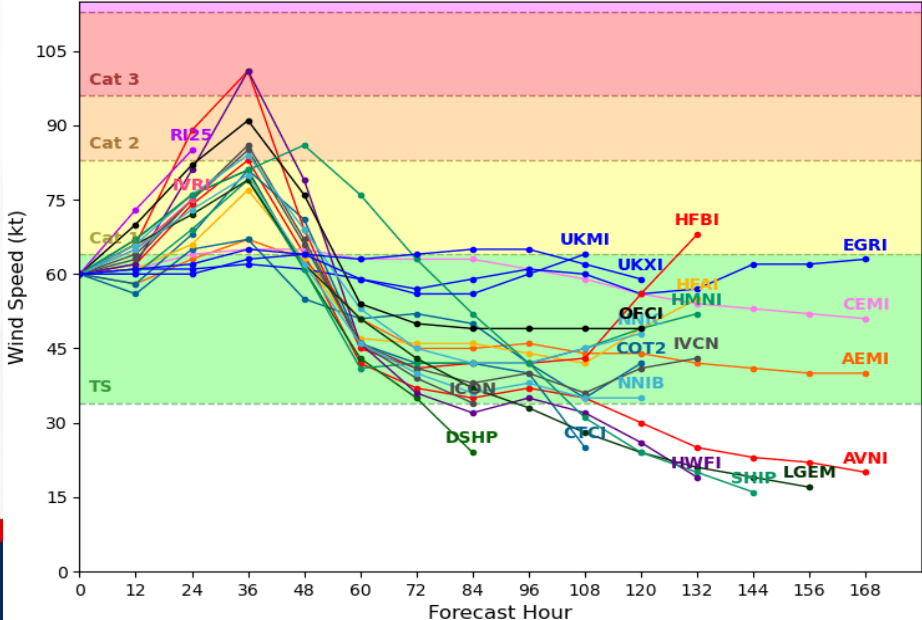
Initialized at 18z Aug 28 2023 Levi Cowan - tropicaltidbits.com



Computer models are in decent agreement regarding Idalia's forecast track, with little significant changes made this afternoon. Computer models agree that Idalia will begin a faster northward motion later today, turning north-northeast and northeast by early Wednesday, and making landfall along the Florida Big Bend and Nature Coast Wednesday morning. While there remains some degree of disagreement regarding Idalia's overall intensity, computer models are in agreement that the system will continue to strengthen today, becoming a hurricane later today near the western tip of Cuba. Computer models show Idalia will continue to intensify over the warm eastern Gulf of Mexico waters through landfall, becoming a major hurricane by late Tuesday night or early Wednesday morning.

Tropical Storm IDALIA Model Intensity Guidance

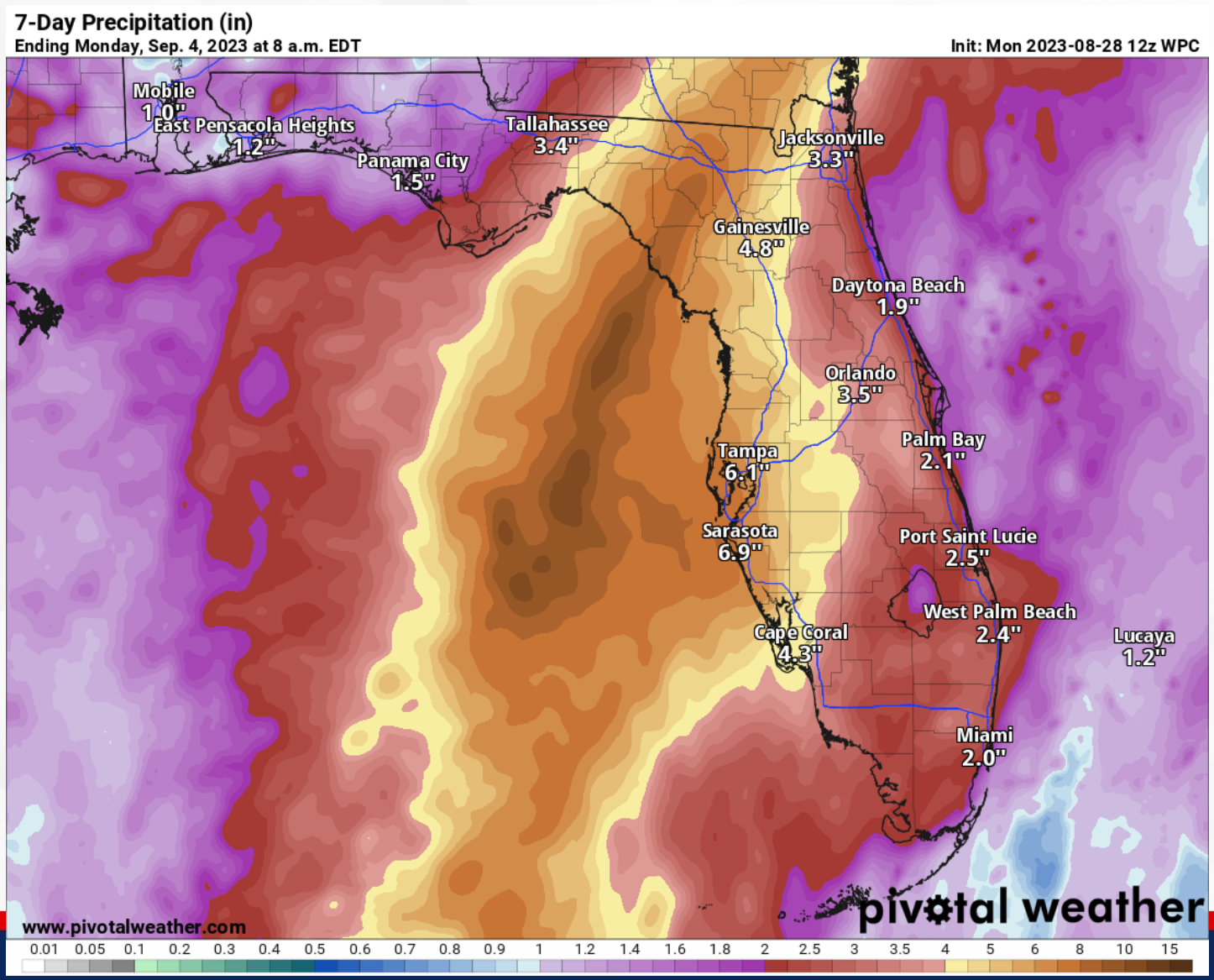
Initialized at 18z Aug 28 2023 Levi Cowan - tropicaltidbits.com





7-Day Forecast Rainfall

From the National Weather Service & Weather Prediction Center

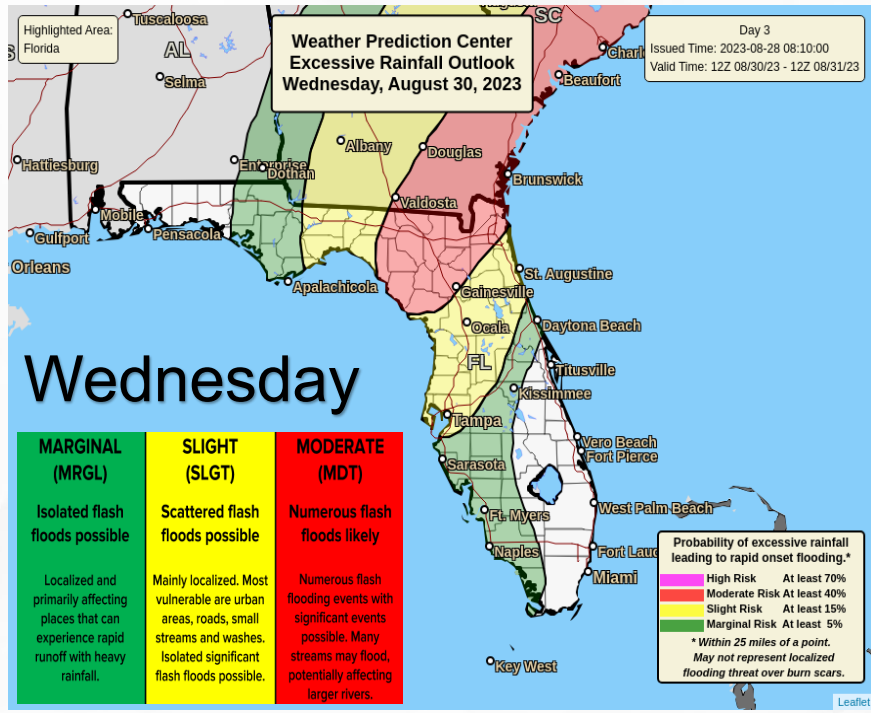
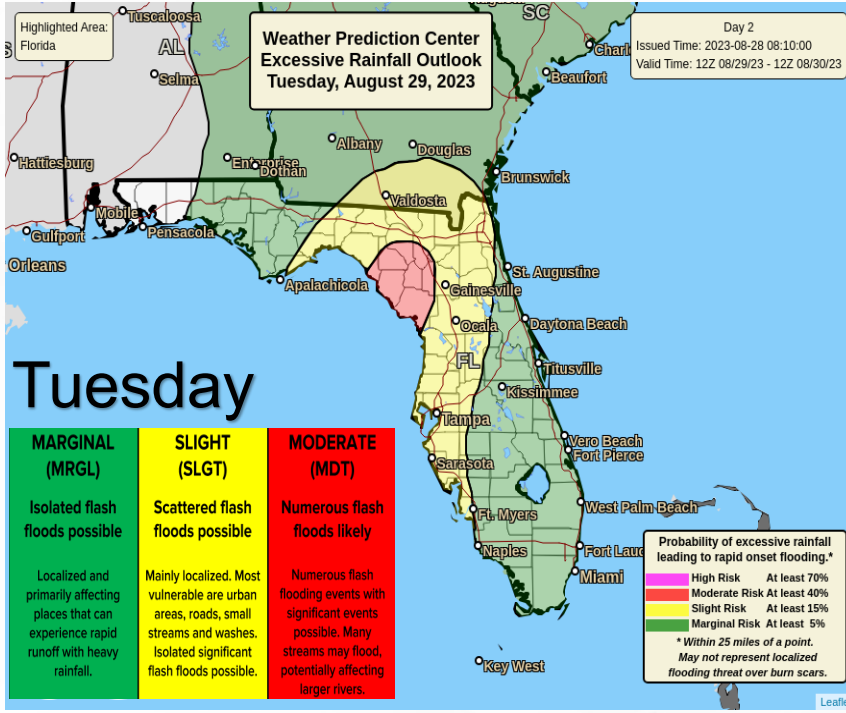
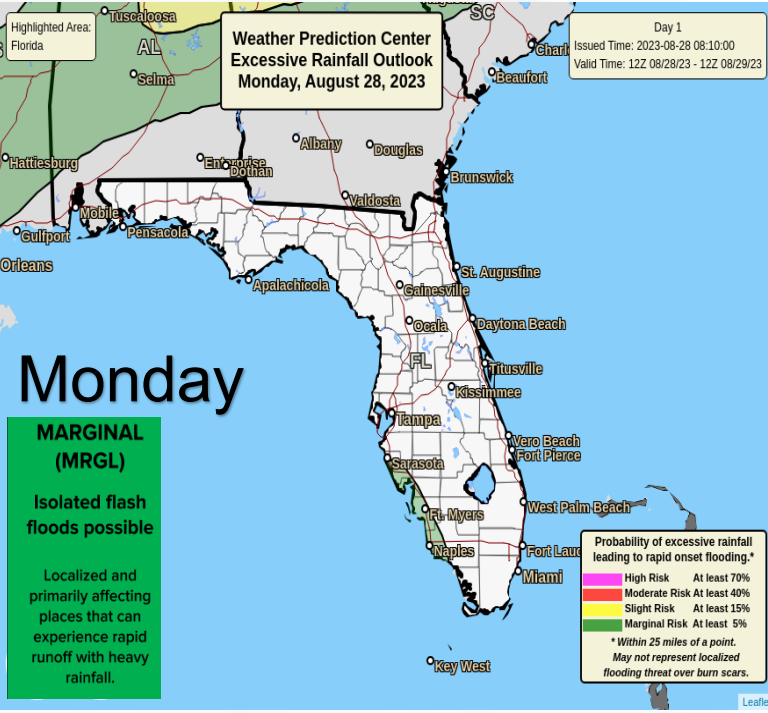


Exact rainfall amounts will be track-dependent, but there is the potential for heavy rainfall amounts of 4-8", with the higher amounts to the right of the track of the system. Isolated locations could receive up to 12" of rain from this system, with coastal portions of the Florida West Coast and Big Bend being the most at risk for these higher amounts.



Flash Flood Outlook – Mon, Tue, Wed

From the Weather Prediction Center



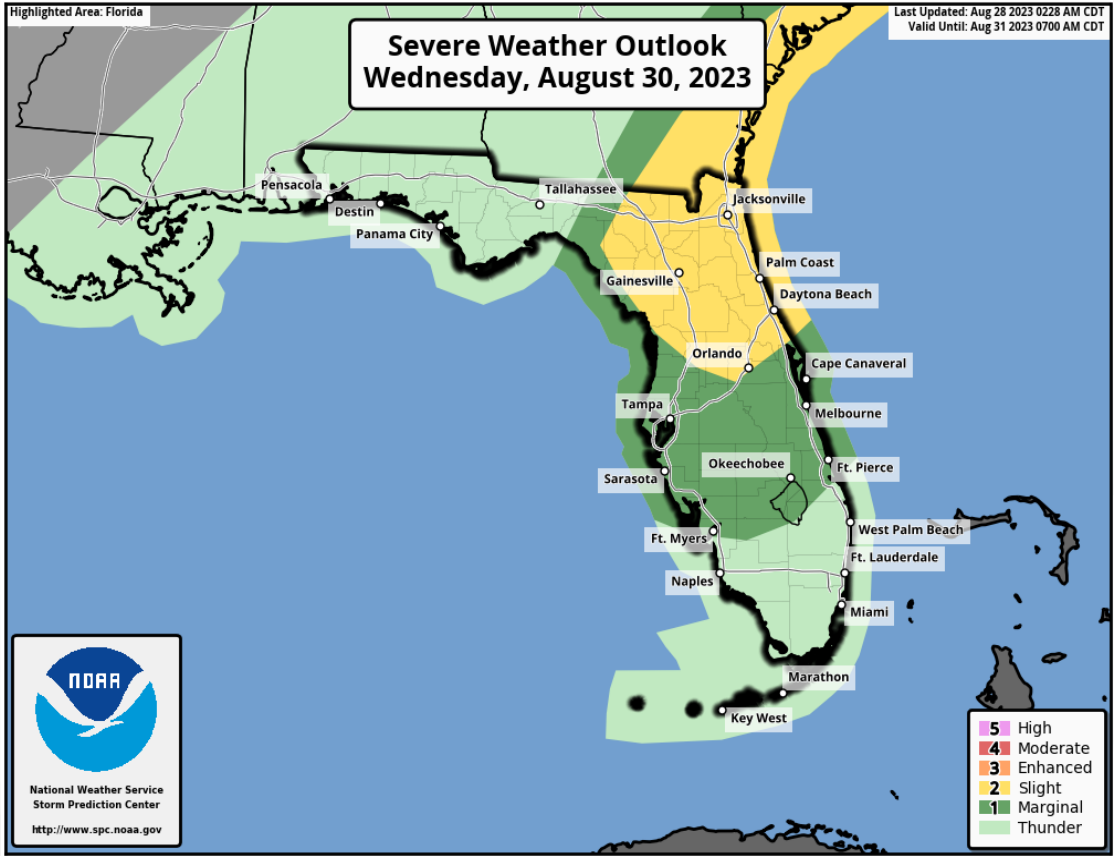
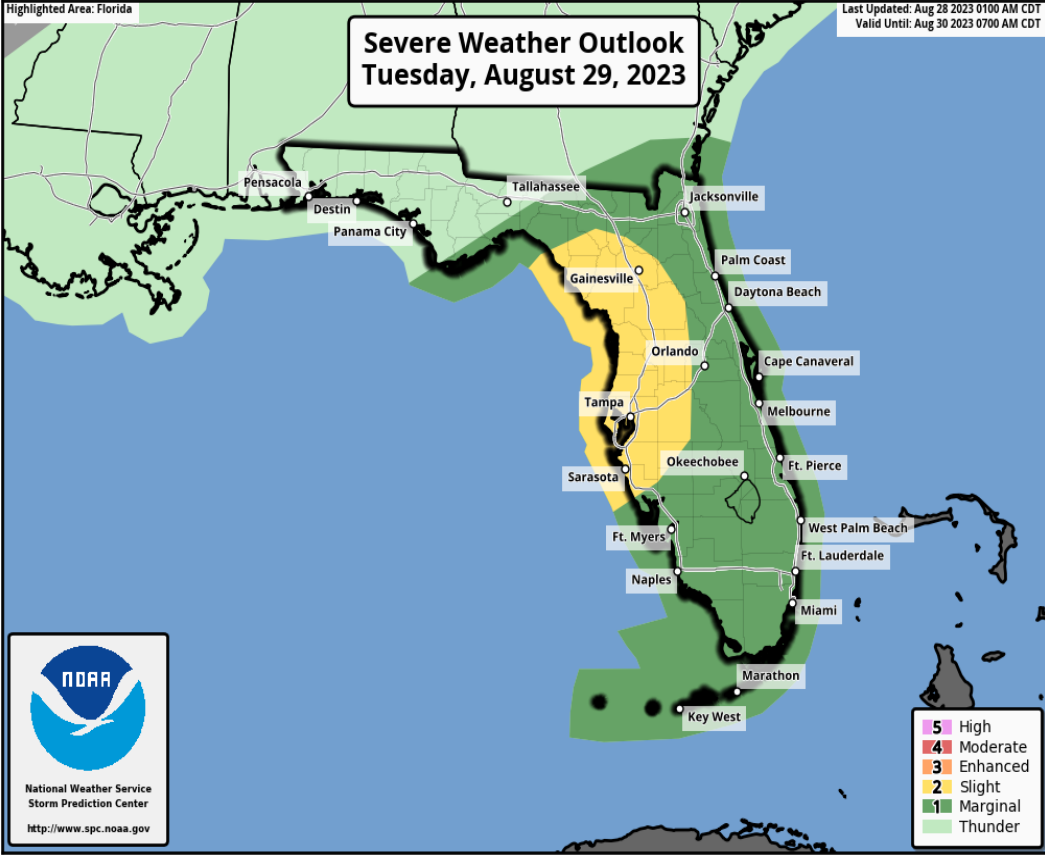
As tropical moisture begins to move north south to north, there is a **Marginal Risk for Flash Flooding (level 1 of 4)** across the far Southwest Florida coastline. As Idalia moves over the eastern Gulf of Mexico, there is now a **Moderate Risk for Flash Flooding (level 3 of 4)** along the Florida Big Bend, with a **Slight Risk (level 2 of 4)** extending through much of North and West Florida. As Idalia propagates inland, a **Moderate Risk (level 3 of 4)** can be expected to expand over the Suwannee River Valley and Northeast Florida, especially for locations along and east of Idalia's path.



Severe Weather Outlook – Tues. & Wed.

From the Storm Prediction Center

5 - High Widespread severe storms expected
4 - Moderate Widespread severe storms likely
3 - Enhanced Numerous severe storms possible
2 - Slight Scattered severe storms possible
1 - Marginal Isolated severe storms possible
Thunderstorms No severe storms expected



A **Slight Risk for Severe Weather (level 2 of 5)** has been introduced Tuesday night into Wednesday morning along the Florida Gulf Coast as isolated tropical tornadoes may be embedded within Idalia’s outer rain bands as the system approaches the Florida coastline. The **Marginal Risk (level 1 of 5)** has been expanded to include more of the Florida Peninsula and Florida Keys through the Tuesday morning hours. A **Slight Risk (level 2 of 5)** will continue Wednesday over the Suwannee River Valley into Northeast Florida, as Idalia advances northeastward.



Elevated Rip Current Risk

Panhandle & East Coast Beaches

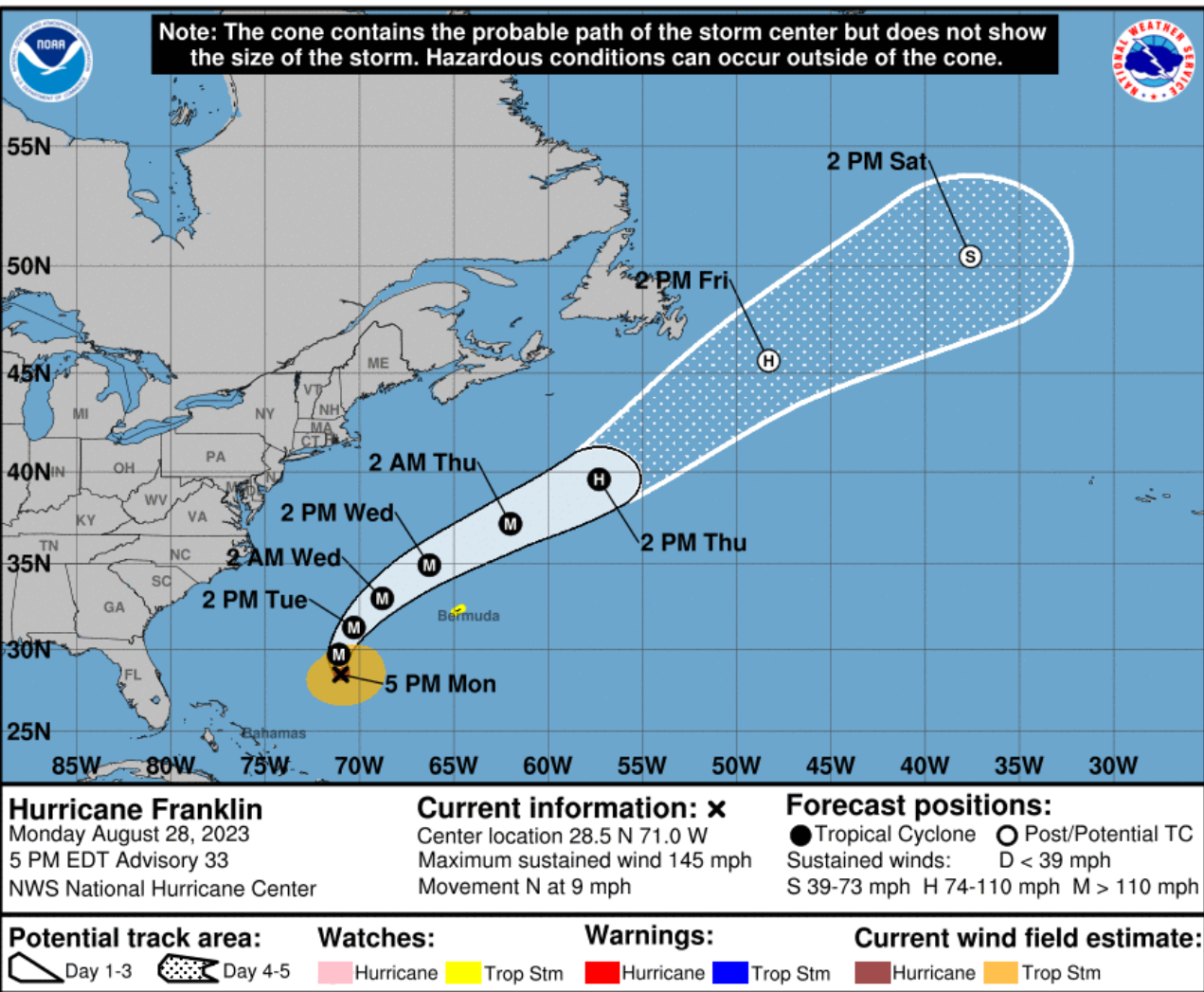


A **high risk of rip currents** will largely continue along Florida East Coast beaches with a **moderate to high risk** for Panhandle beaches through midweek. Elevated long-period swell from distant Hurricane Franklin and approaching Tropical Storm Idalia will lead to dangerous beach and boating conditions along all Florida beaches by this evening. Collier county is already seeing a **locally high risk of rip currents**. A **moderate to high risk of rip currents** can be expected to continue through Thursday, at least.



Forecast Cone

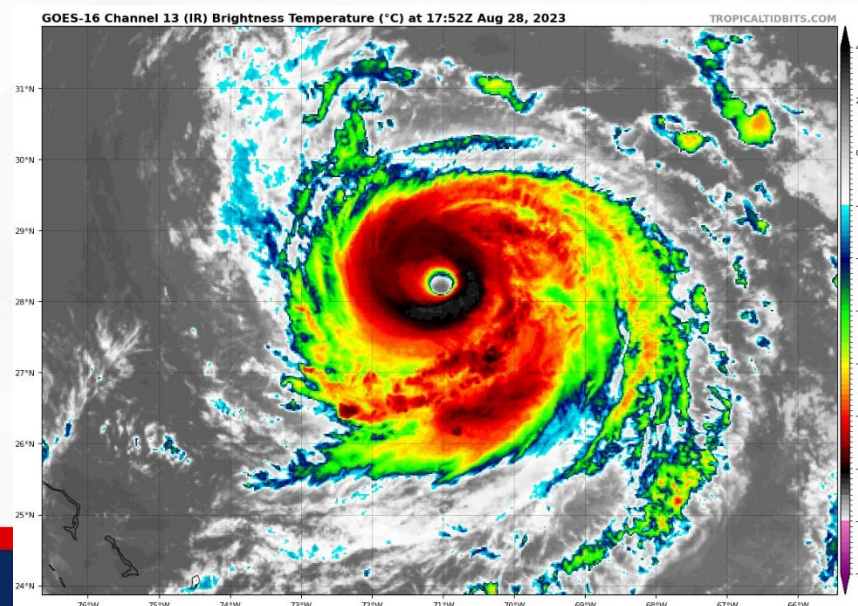
Major Hurricane Franklin ([LINK](#))



- **Location:** 485 miles N of Grand Turk Island; 455 miles SW of Bermuda
- **Maximum Sustained Winds:** 145 mph; Category 4
- **Current Movement:** N at 9 mph
- **FL Watches/Warnings:** None

This northward to north-northeastward motion with a slightly faster forward speed is expected over the next few days as it passes well to the west of Bermuda Wednesday. Some additional strengthening is possible today, but gradual weakening is expected to begin late Tuesday.

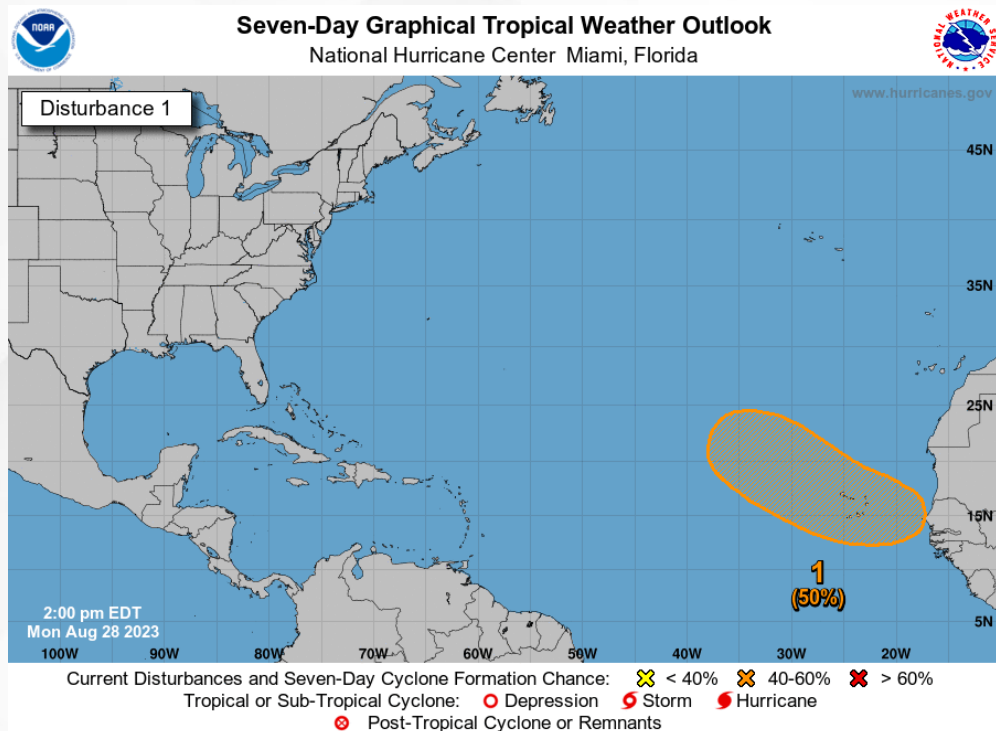
Franklin poses no direct threat to Florida; however, and elevated risk of rip currents and wave heights will be possible along Atlantic Coast beaches over the next several days.





Tropical Weather Outlook

Disturbance 1 – Eastern Tropical Atlantic ([LINK](#))



A tropical wave is forecast to move off the west coast of Africa in the next 24-48 hours. Environmental conditions appear marginally favorable for gradual development of this system, and a tropical depression could form later this week as the system moves westward of west-northwestward across the eastern tropical Atlantic.

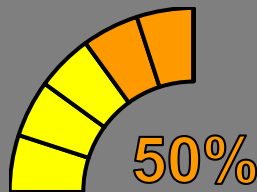
This system poses no threat to Florida at this time.

* Formation chance through 48 hours...**low...near 0%.**

* Formation chance through 7 days...**medium...50%.**

Near 0%

48 Hour Formation



50%

7 Day Formation



Summary

Tropical Storm Idalia:

- As of 5:00 PM EDT, Idalia was located about 265 miles south-southwest of the Dry Tortugas, Florida and continues to move northward near 8 mph.
- A northward motion is expected through tonight, followed by a fast north-northeast motion on Tuesday and Wednesday.
- On the forecast track, the center of Idalia is forecast to pass near or over western Cuba tonight, over the extreme southeastern Gulf of Mexico by early Tuesday, and reach the Gulf Coast of Florida on Wednesday.
- Rapid strengthening is predicted in the next day or so.
- Maximum sustained winds have increased near 70 mph. Idalia is forecast to become a hurricane this evening or tonight and a dangerous major hurricane over the northeastern Gulf of Mexico late Tuesday or Tuesday night.
- Computer models indicate Idalia will continue to strengthen as it moves over the warm waters of the eastern Gulf of Mexico, before making landfall along the Florida Big Bend or Nature Coast Wednesday morning.
- Wind and Storm Surge Watches and Warnings are in effect along the Florida Gulf Coast, and additional upgrades to Warnings are possible later today.

Major Hurricane Franklin:

- As of 5:00 PM EDT Monday, Franklin was located about 485 miles north of Grand Turk Island and 455 miles southwest of Bermuda, moving northward at 9 mph.
- Franklin is currently a Category 4 Hurricane with maximum sustained winds near 145 mph.
- A north and north-northeast motion with a slightly faster forward speed is expected during the next few of days.
- Additional strengthening is possible today, but gradual weakening is expected to begin late Tuesday.
- *Franklin poses no direct threat to Florida; however, long-period ocean swells and an elevated risk for rip currents can be anticipated along Florida East Coast beaches.*

Eastern Tropical Atlantic:

- A tropical wave is forecast to move off the west coast of Africa in the next day or so. Environmental conditions appear marginally favorable for gradual development of this system, and a tropical depression could form later this week while the system moves westward or west-northwestward across the eastern tropical Atlantic.
- There is a 50% (medium) chance of development over the next 7 days.
- *This system poses no threat to Florida at this time.*

The next briefing package will be issued on Monday Night. For the latest information, please visit the [National Hurricane Center website](#).



Summary

Florida Outlook:

- **Hurricane Warnings** have been issued for Citrus, Dixie, coastal Franklin, Hernando, Hillsborough, Jefferson, Lafayette, Levy, Madison, Manatee, Pasco, Pinellas, Sumter, Taylor, coastal Wakulla, western Alachua, western Marion, Suwannee, and Gilchrist county.
- **Hurricane Watches** are in effect for eastern Alachua, Baker, Bradford, Columbia, Hamilton, central Marion, Union.
- **Tropical Storm Warnings** are in effect for the Charlotte, coastal Collier, DeSoto, Hardee, Lake, Lee, Leon, Liberty, Polk, Sarasota, inland Wakulla, inland Franklin, Gulf, Osceola, Orange, Seminole, and the Dry Tortugas.
- **Tropical Storm Watches** are in effect for Brevard, Clay, inland Collier, Duval, Flagler, eastern Marion, Nassau, Putnam, St. Johns, Volusia, and the Lower Keys.
- **Storm Surge Warnings** have been issued from the Franklin/Gulf border to the Sarasota/Manatee border, including Tampa Bay.
- **Storm Surge Watches** are in effect from the Charlotte/Sarasota border to Chokoloskee the Collier/Monroe border.
- Additional watches may be upgraded to Warnings later today and Tuesday.
- Tropical storm-force wind probabilities continue to increase along the Florida West Coast, with tropical impacts beginning as early as Tuesday morning in Southwest Florida.
- The most likely timeframe for deteriorating conditions across the state will be Tuesday evening and overnight from south to north along the Florida Gulf Coast, and early Wednesday morning across Northeast Florida.
- While there remains some degree of disagreement regarding Idalia's overall intensity, computer models are in agreement that the system will continue to strengthen today, becoming a hurricane later today near the western tip of Cuba.
- Computer models show Idalia will continue to intensify over the warm eastern Gulf of Mexico waters through landfall, becoming a major hurricane by late Tuesday night or early Wednesday morning.
- Storm surge values reaching 8-12' will be possible from the Aucilla River to Chassahowitzka, 6-9' from Chassahowitzka to the Anclote River, 4-7' from the Ochlockonee River to the Aucilla River and Tampa Bay.
- Storm surge will also be possible southward along the Florida Gulf Coast from Englewood through Charlotte Harbor, from Mexico beach to Indian Pass, along the Northeast coast from the Mouth of the St. Mary's River to the Flagler/Volusia County line, and the Florida Keys.
- A Slight Risk for Severe Weather (level 2 of 5) has been introduced Tuesday night into Wednesday morning along the Florida Gulf Coast as isolated tropical tornadoes may be embedded within Idalia's outer rain bands as the system approaches the Florida coastline.
- The Marginal Risk (level 1 of 5) has been expanded to include more of the Florida Peninsula and Florida Keys through the Tuesday morning hours. A Slight Risk (level 2 of 5) will continue Wednesday over the Suwannee River Valley into Northeast Florida, as Idalia advances northeastward.
- As Idalia moves over the eastern Gulf of Mexico, there is now a Moderate Risk for Flash Flooding (level 3 of 4) along the Florida Big Bend, with a Slight Risk (level 2 of 4) extending through much of North and West Florida. As Idalia propagates inland, a Moderate Risk (level 3 of 4) can be expected to expand over the Suwannee River Valley and Northeast Florida, especially for locations along and east of Idalia's path.

The next briefing package will be issued on Monday Night. For the latest information, please visit the [National Hurricane Center website](#).



Tropical Update



Created by:

Melissa James, Assistant State Meteorologist

Melissa.James@em.myflorida.com

State Meteorological Support Unit

Florida Division of Emergency Management

Users wishing to subscribe (approval pending) to this distribution list, register at:

https://public.govdelivery.com/accounts/FLDEM/subscriber/new?topic_id=SERT_Met_Tropics.

Other reports available for subscription are available at:

<https://public.govdelivery.com/accounts/FLDEM/subscriber/new?preferences=true>