



Tropical Update



5:00 PM EDT

Sunday, August 27, 2023

Tropical Storm Idalia, Hurricane Franklin & Eastern Tropical Atlantic (20%)

This update is intended for government and emergency response officials, and is provided for informational and situational awareness purposes only. Forecast conditions are subject to change based on a variety of environmental factors. For additional information, or for any life safety concerns with an active weather event please contact your County Emergency Management or Public Safety Office, local National Weather Service forecast office, or visit the National Hurricane Center website at www.hurricanes.gov.

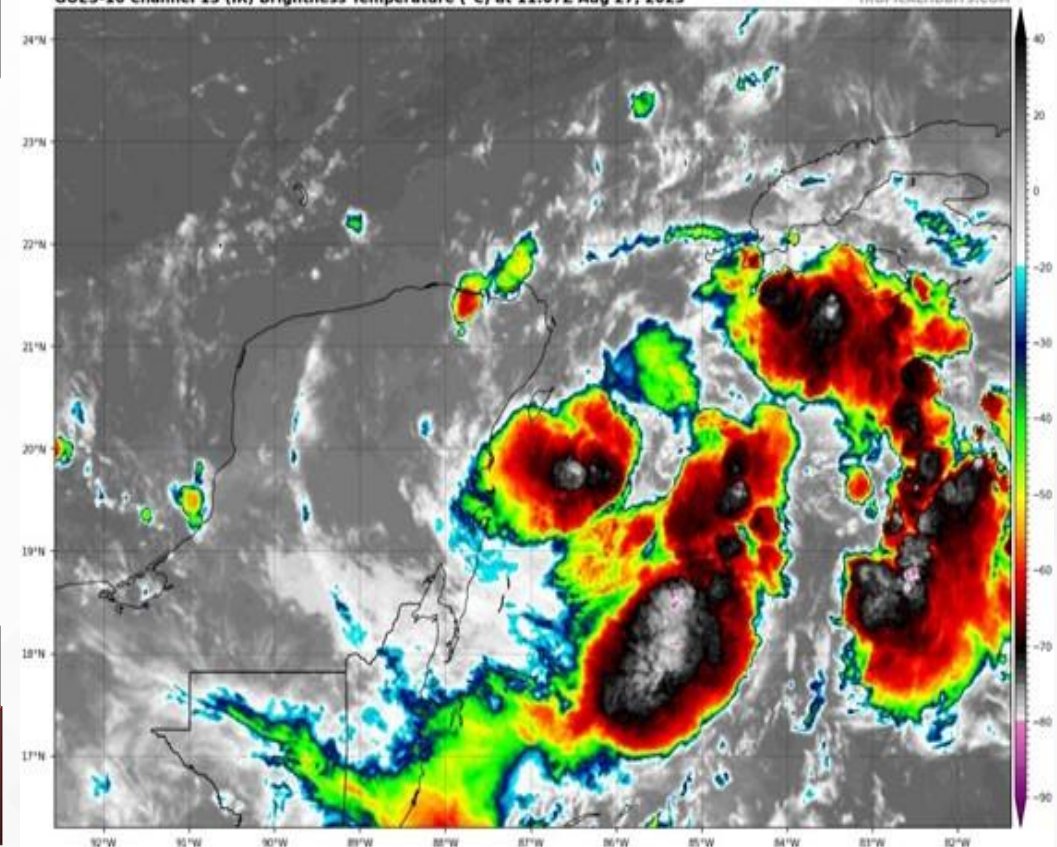


Tropical Storm Idalia

5 PM EDT Sunday: Florida Threats & Changes Since Last Packet

	MINIMAL	Low	MODERATE	HIGH	EXTREME
 WINDS					
 STORM SURGE					
 FLASH FLOODING					
 TORNADOES					
	Low	MODERATE	HIGH		
 RIP CURRENTS					

GOES-16 Channel 13 (IR) Brightness Temperature (°C) at 11:07Z Aug 27, 2023



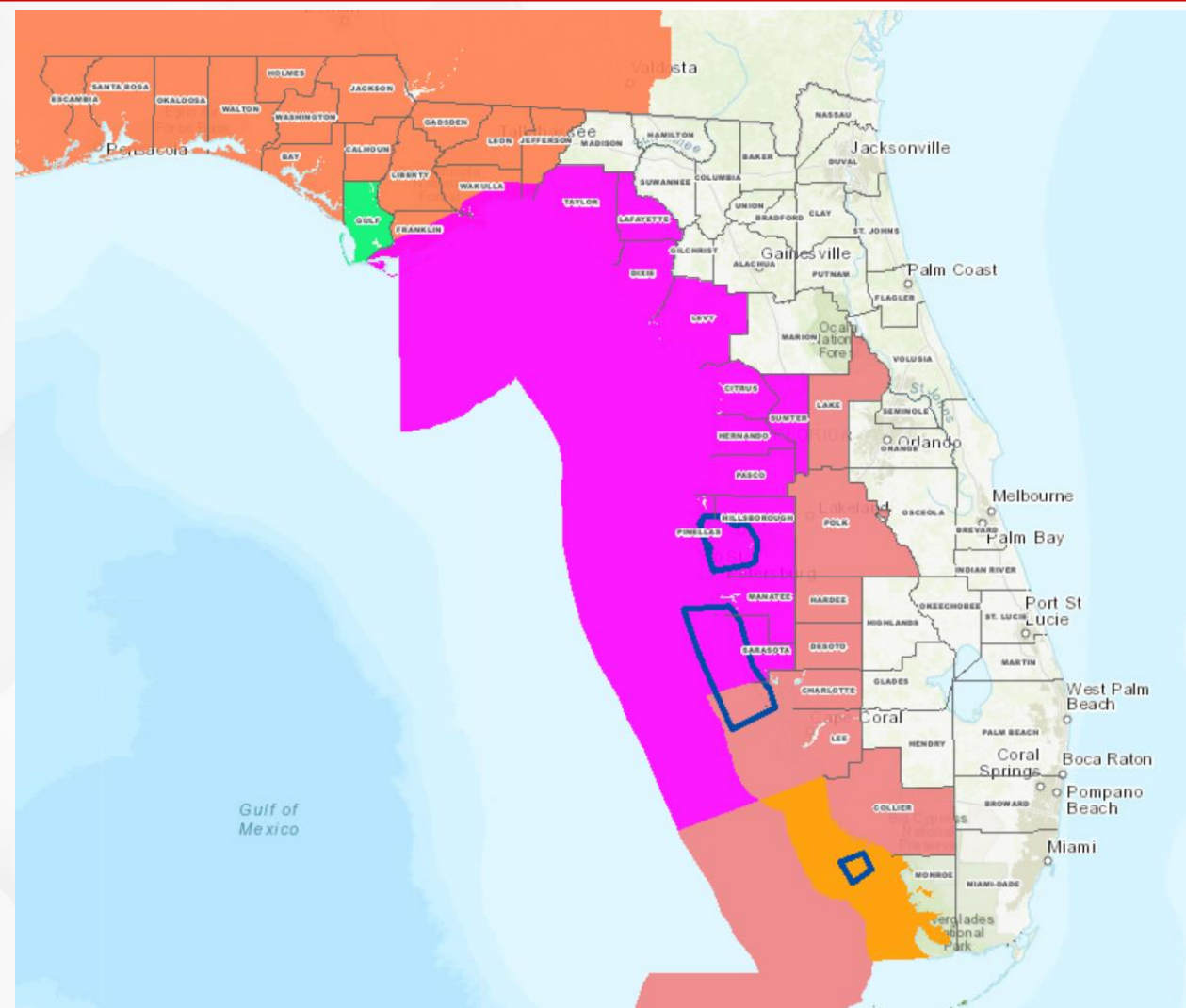
Overview/Recent Changes:

With the 5:00 PM EDT Advisory, Hurricane Ian has been upgraded to a Category 2 hurricane, with maximum sustained winds of 100 mph. Hurricane Warnings are now in effect around Tampa Bay with Hurricane Watches on either side on the Nature Coast and southwest Florida. Tropical Storm Watches are in effect for most of the eastern half of the state and in the coastal Big Bend. Storm Surge Warnings are in effect for much of the west coast with storm surge watches in the eastern Big Bend and far south Florida and the Keys.



Active Tropical Watches/Warnings

Tropical Storm Idalia

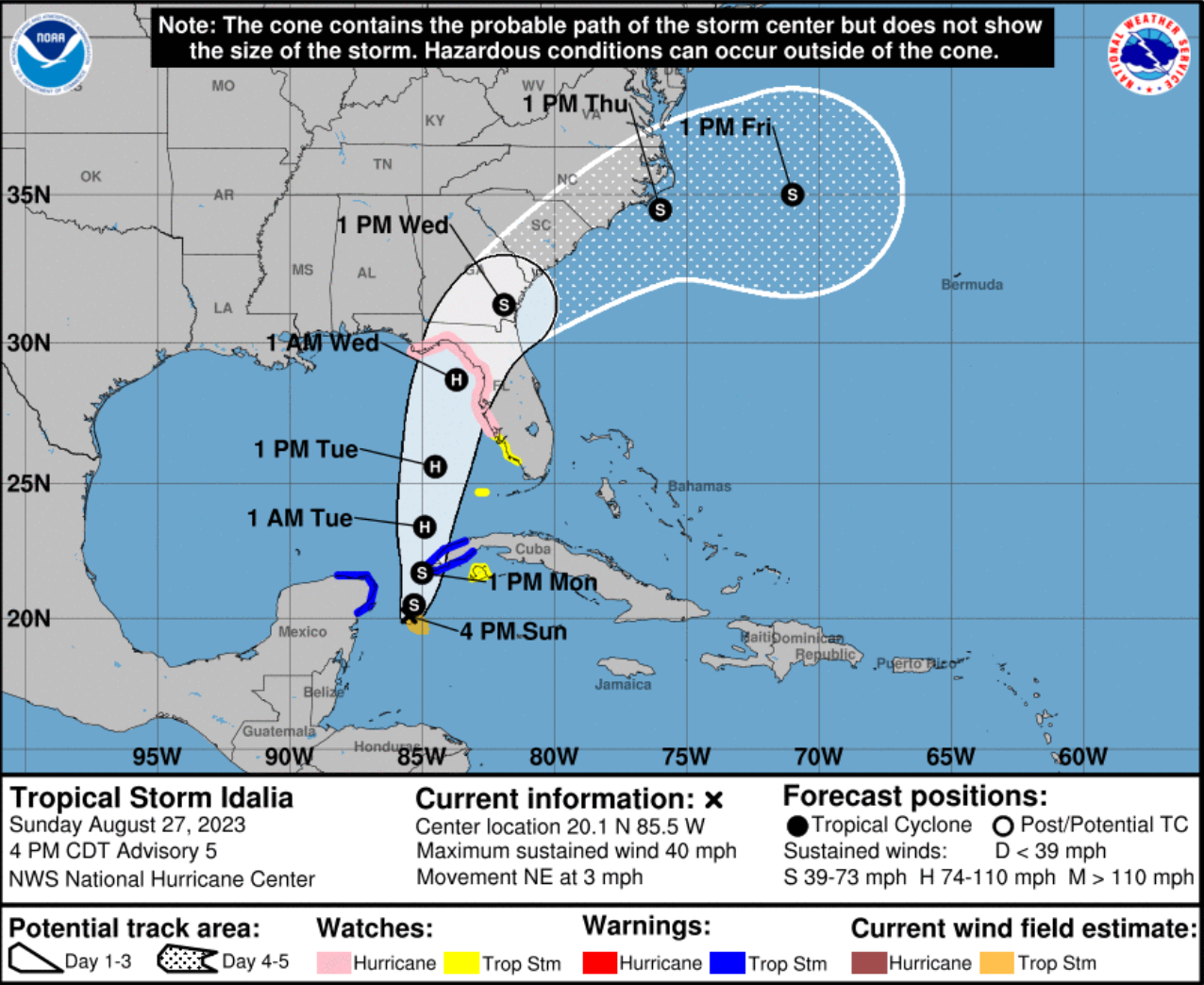


- **Hurricane Watch:**
 - Citrus, Dixie, Coastal Franklin, Hernando, Hillsborough, Coastal Jefferson, Lafayette, Levy, Manatee, Pasco, Pinellas, Sarasota, Sumter, Taylor, and Coastal Wakulla
- **Tropical Storm Watch:**
 - Charlotte, Collier, Desoto, Hardee, Lake, Lee and Polk



Forecast Cone

Tropical Storm Idalia ([LINK](#))



- **Location:** 95 miles ESE of Cozumel, Mexico; 390 mi SW Key West
- **Maximum Sustained Winds:** 40 mph
- **Current Movement:** NE at 3 mph
- **FL Watches/Warnings:** **Hurricane Watch** from Englewood to Indian Pass; Tropical Storm Watch from South of Englewood to Chokoloskee; Storm Surge Watch from Chokoloskee to Indian Pass

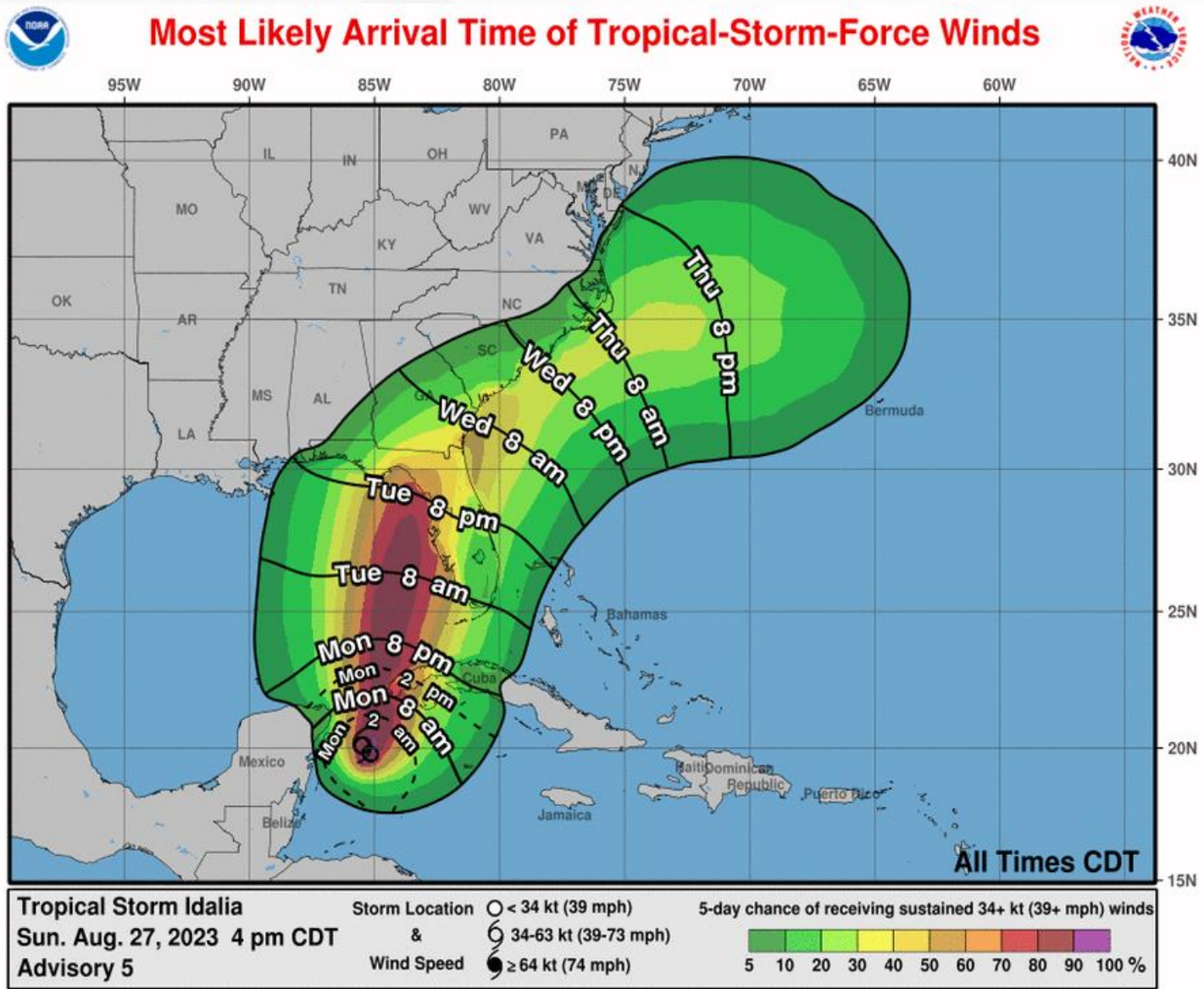
A slow, possibly erratic, motion is expected tonight. A generally northward to north-northeastward motion can be expected, with increasing forward speed, can be expected Monday and Tuesday. On the forecast track, the center will move over the eastern Gulf of Mexico on Monday and Tuesday, and approach the Gulf Coast late Tuesday. Strengthening is forecast, and Idalia is expected to become a hurricane over the southeastern Gulf of Mexico by early Tuesday. Additional strengthening is likely as the system approaches the northeastern Gulf Coast.

Hurricane Watches have been issued along the Big Bend and through West-Central Florida, with Tropical Storm Watches extending through Southwest Florida and the Dry Tortugas. Storm Surge Watches have been issued from Chokoloskee to Indian Pass.



Tropical Storm-Force Wind Probabilities

Tropical Storm Idalia



- Key West – 41% **(+21%)**
 - Naples – 52% **(+25%)**
 - Tampa – 71% **(+23%)**
 - Orlando – 27% **(+14%)**
 - Cedar Key – 74% **(+16%)**
 - Tallahassee – 31% **(-7%)**
 - St. Marks – 37% **(-5%)**
 - Apalachicola – 48% **(-14%)**
 - Panama City – 34% **(-16%)**
 - Jacksonville – 22% **(+15%)**
- *The numbers in parenthesis (to be added in next briefing packet) will show the change in probability since the previous briefing packet.***

Tropical storm-force winds could start as early as Tuesday along Florida's Gulf Coast; however, tropical storm-force winds will most likely arrive Tuesday afternoon along the West-Central Florida Coast, gradually expanding northward to the Florida Nature Coast and Big Bend Tuesday evening and overnight.

The chances for tropical-storm force winds continue to increase for the Florida Big Bend and coastal portions of West-Central and Southwest Florida. The potential for hurricane-force winds are likely to increase areas between Tampa and Panama City in the coming days.



Key Messages

Tropical Storm Idalia



Key Messages for Tropical Storm Idalia

Advisory 5: 4:00 PM CDT Sun Aug 27, 2023

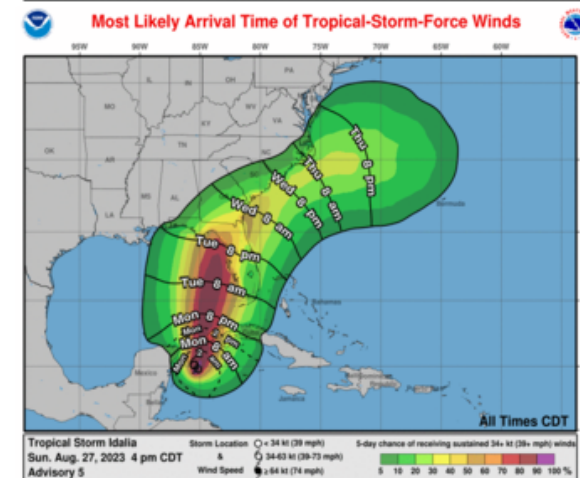
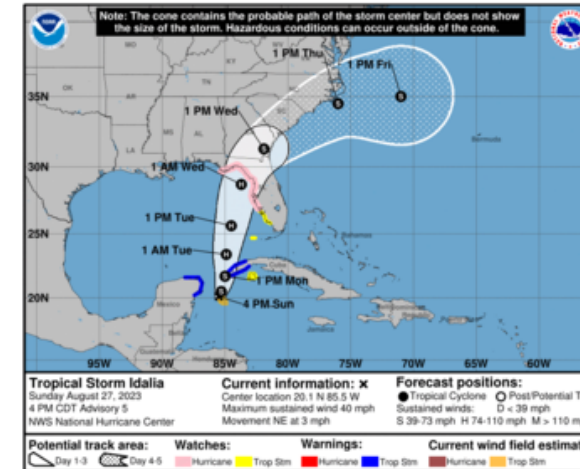


1. Idalia is forecast to become a hurricane over the eastern Gulf of Mexico, and there is an increasing risk of life-threatening storm surge and hurricane-force winds along portions of the west coast of Florida and the Florida Panhandle beginning as early as Tuesday. Although it is too soon to specify the exact location and magnitude of these impacts, residents in these areas should monitor updates to the forecast and follow any advice given by local officials. Storm surge and hurricane watches have been issued for portions of the west coast of Florida and the coast of the Florida Panhandle, and residents in these areas should monitor updates to the forecast and follow any advice given by local officials.

2. Scattered flash and urban flooding can be expected across portions of the west coast of Florida, the Florida Panhandle and portions of the Southeast U.S. by Tuesday into Thursday. Flooding from heavy rainfall is likely over portions of the southeast U.S. by mid to late week.

3. Heavy rainfall from Tropical Storm Idalia is expected across portions of the eastern Yucatan and western Cuba and may produce areas of flash and urban flooding as well as landslides across western Cuba.

4. Tropical storm conditions are expected over portions of the Yucatan Peninsula and extreme western Cuba with tropical storm conditions possible on the Isle of Youth.

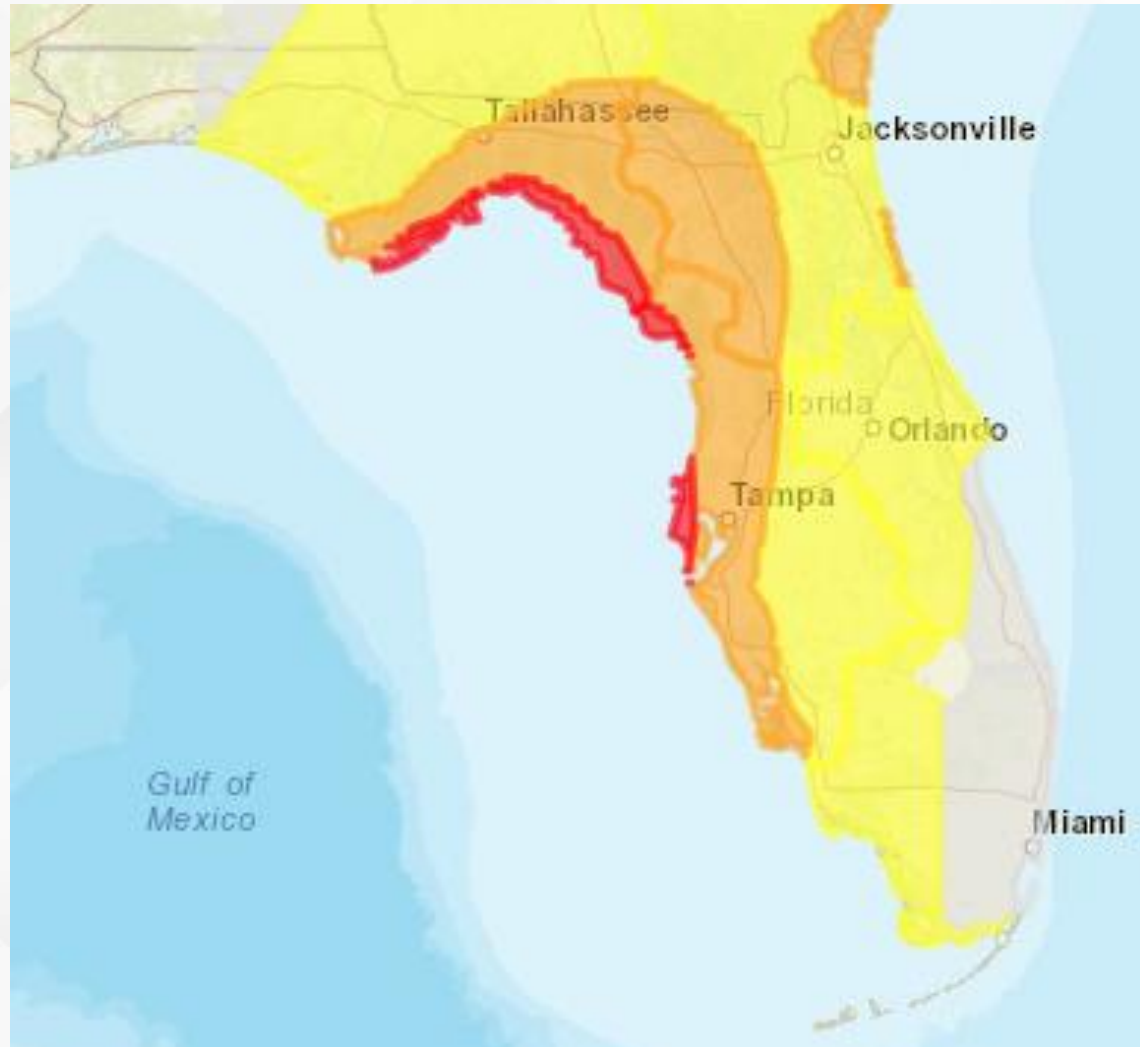


For more information go to hurricanes.gov



Damaging Wind Threat Overview

Tropical Storm Idalia



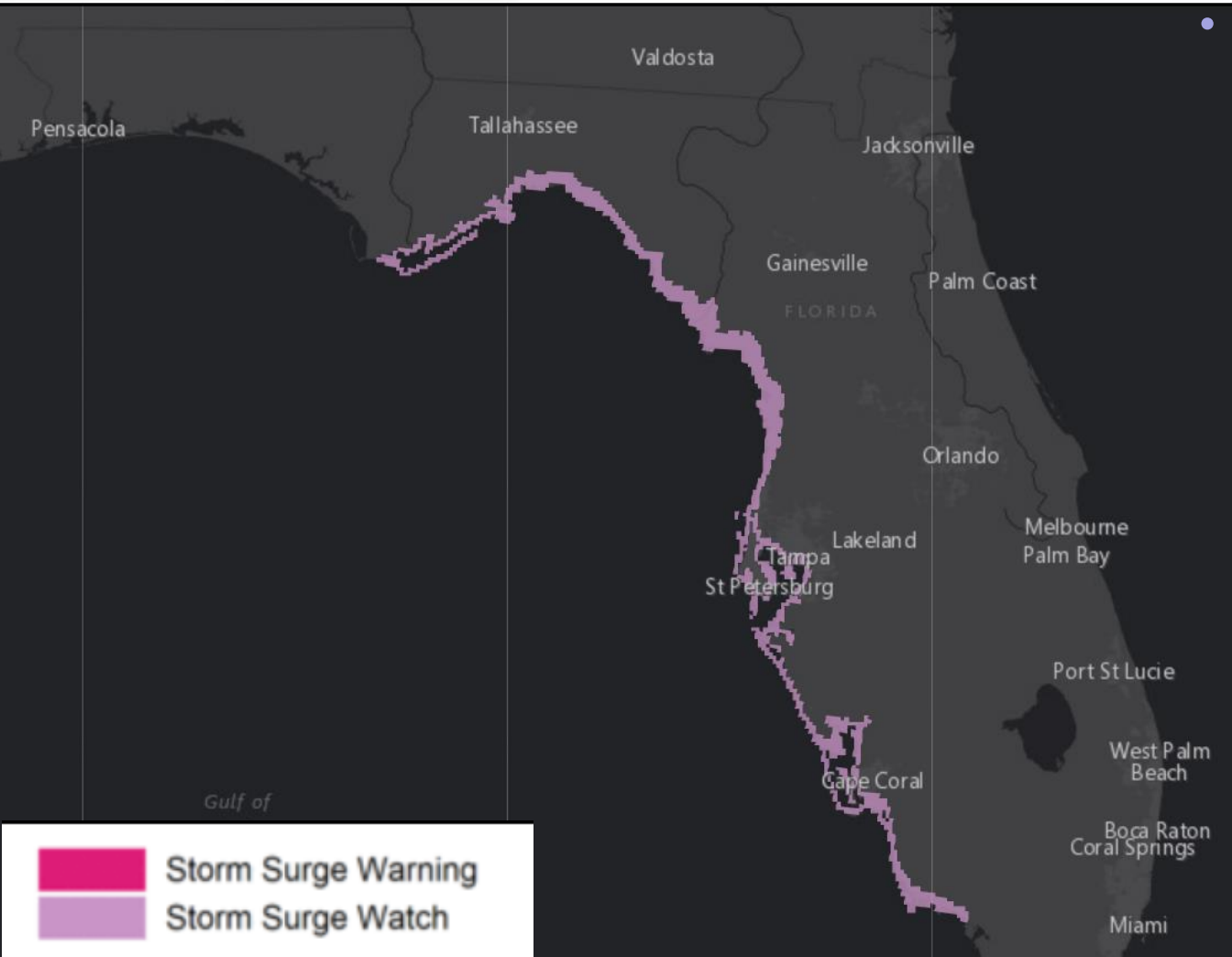
Wind Threat
Potential for wind greater than 110 mph
Potential for wind 74 to 110 mph
Potential for wind 58 to 73 mph
Potential for wind 39 to 57 mph
Wind less than 39 mph

The damaging wind threat will be greatest along the immediate eastern Florida Panhandle, Big Bend, Nature Coast, and far West-Central Florida coastline. A greater damaging wind threat will reside along and east of Idalia's track, favoring the West-Central Florida coastline and into portions of the Suwannee River Valley. Locally higher wind gusts will be possible within more organized rain bands and thunderstorm activity.



Storm Surge Watches in Effect

Tropical Storm Idalia



Storm Surge Watch:

- Coastal Charlotte, Citrus, Collier, Dixie, Franklin, Hernando, Hillsborough, Jefferson, Lee, Levy, Manatee, Pasco, Pinellas, Sarasota, Taylor, and Wakulla



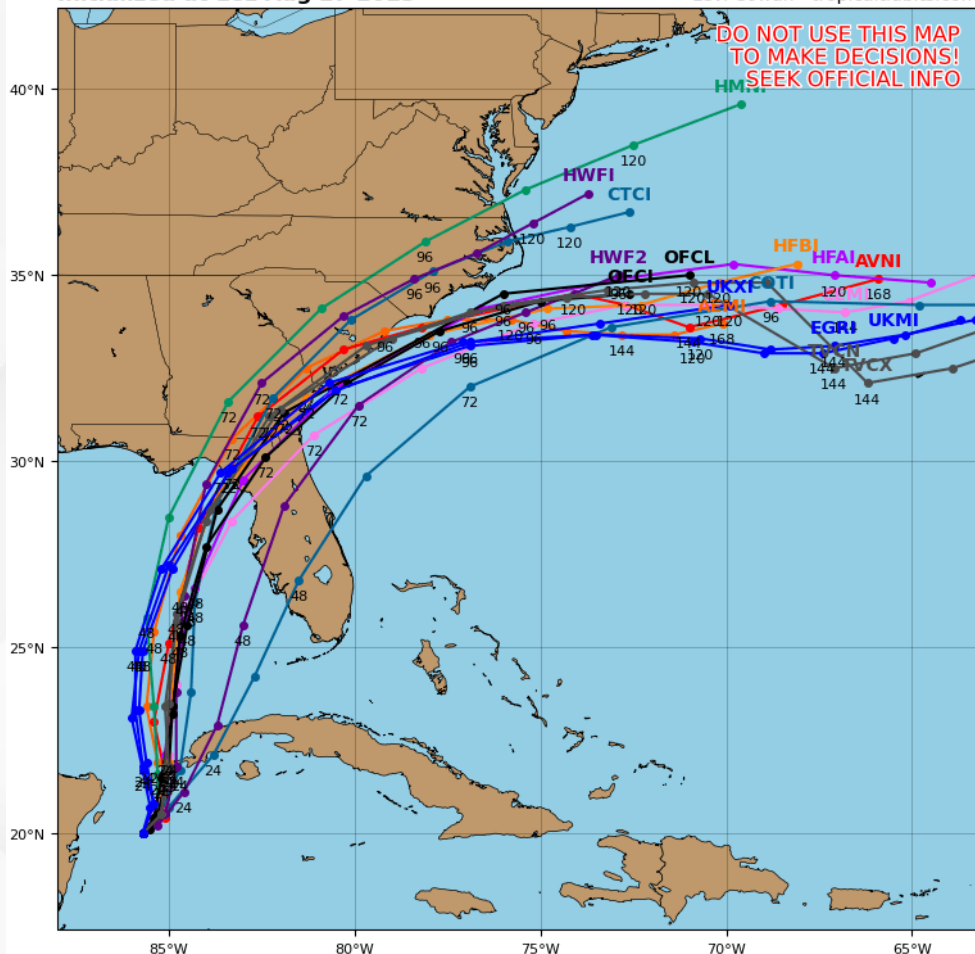
Model Forecasts – Next 5 Days

Tropical Storm Idalia

Tropical Storm IDALIA Model Track Guidance

Initialized at 18z Aug 27 2023

Levi Cowan - tropicaltidbits.com

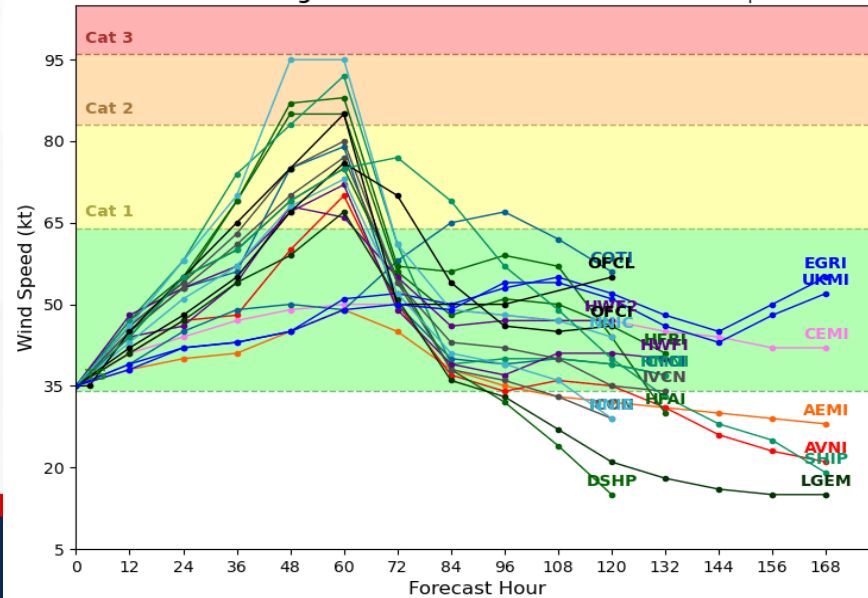


Computer model guidance from this morning is coming into better agreement regarding TS Idalia's forecast track as this system accelerates northward to north-northeastward over the eastern Gulf of Mexico over the next 48-72 hours. There remains disagreement across the computer models with respect to the system's forecast intensity; several hurricane hunter flights will continue to provide data for computer models through the day. Forecast intensity trends continue to increase, but the intensity forecast remains dependent on how fast-moving the system will be. Computer models are continuing to trend towards a more eastern track along the Big Bend and Nature Coast. Computer models indicate that this system will continue to intensify until landfall along the Florida Big Bend coast due to warm sea surface temperatures and only moderate wind shear in the area.

Tropical Storm IDALIA Model Intensity Guidance

Initialized at 18z Aug 27 2023

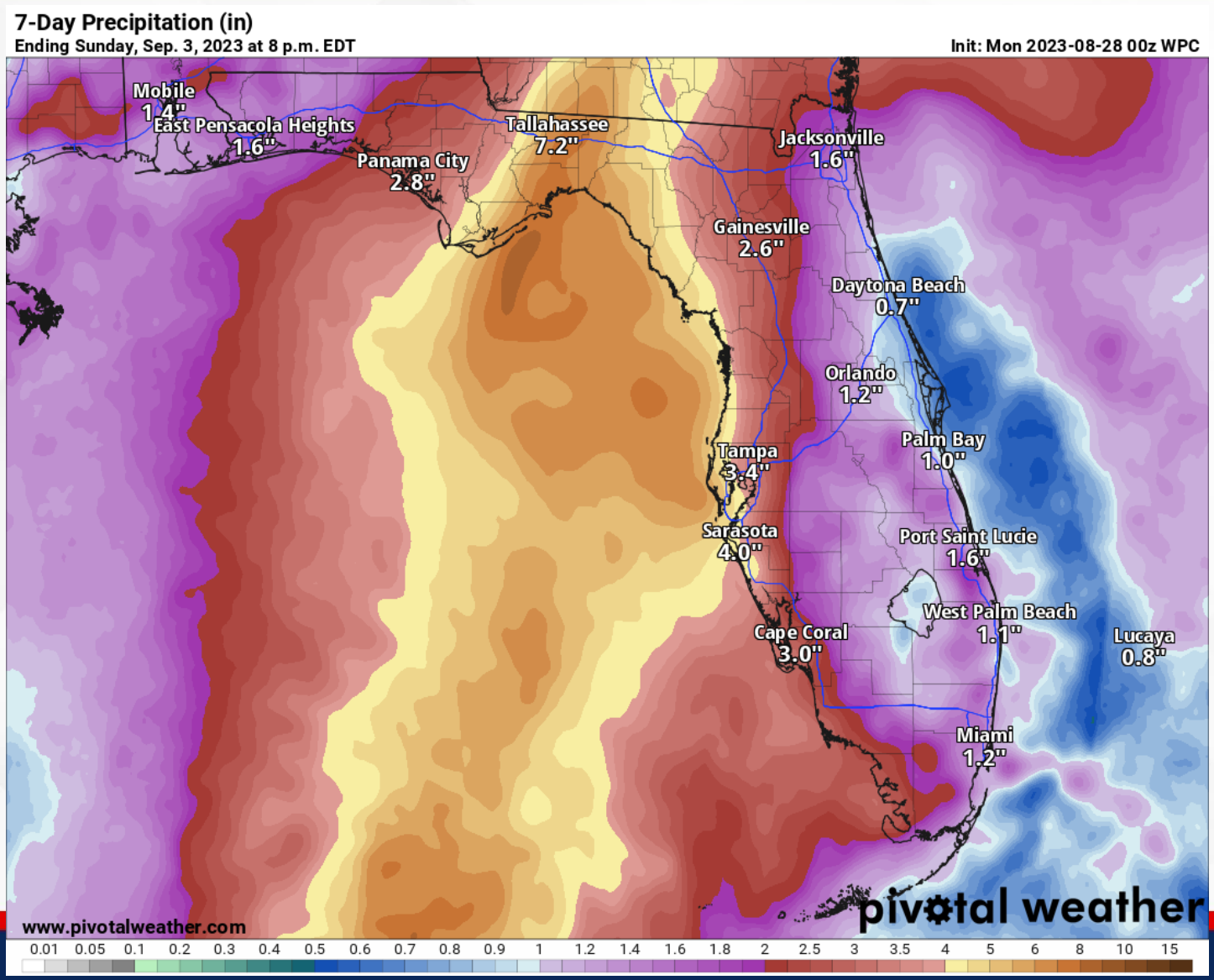
Levi Cowan - tropicaltidbits.com





7-Day Forecast Rainfall

From the National Weather Service & Weather Prediction Center

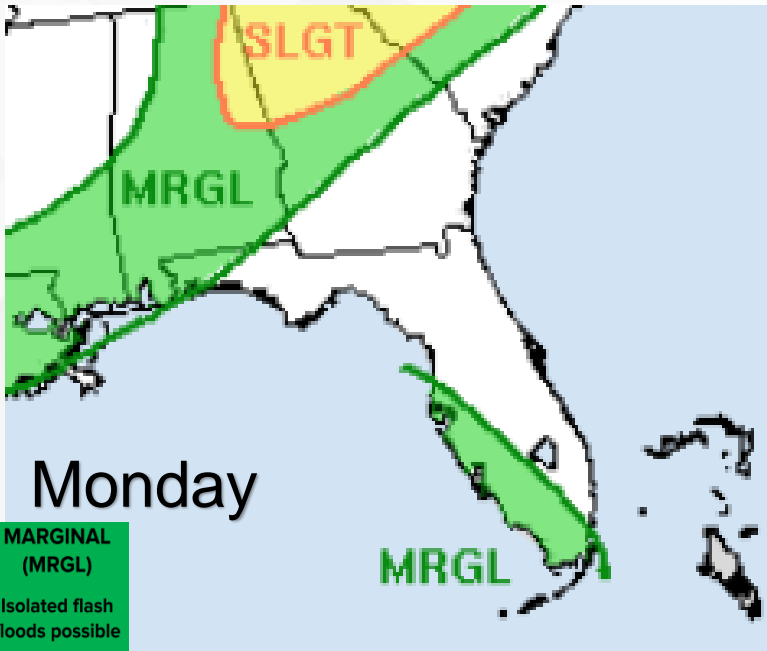


Exact rainfall amounts will be track-dependent, but there is the potential for heavy rainfall amounts of 3-6", with the higher amounts to the right of the track of the system. Isolated locations could receive up to 10" of rain from this system, with coastal portions of the Florida West Coast and Big Bend being the most at risk for these higher amounts.



Flash Flood Outlook – Mon, Tue, Wed

From the Weather Prediction Center

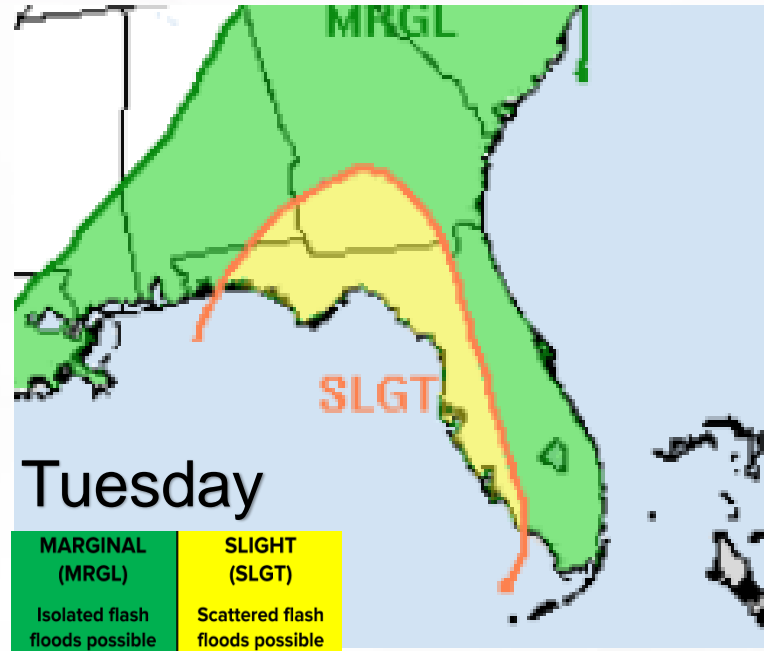


Monday

**MARGINAL
(MRGL)**

Isolated flash
floods possible

Localized and
primarily affecting
places that can
experience rapid
runoff with heavy
rainfall.



Tuesday

**MARGINAL
(MRGL)**

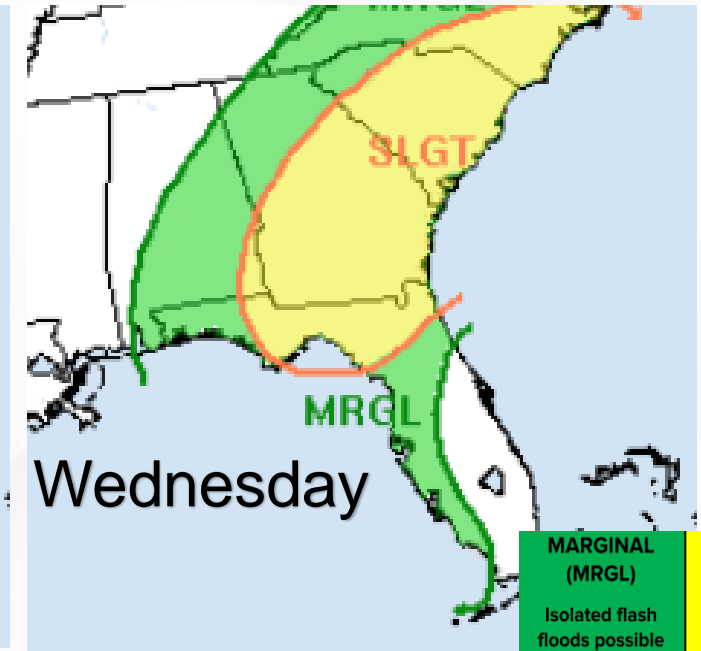
Isolated flash
floods possible

Localized and
primarily affecting
places that can
experience rapid
runoff with heavy
rainfall.

**SLIGHT
(SLGT)**

Scattered flash
floods possible

Mainly localized. Most
vulnerable are urban
areas, roads, small
streams and washes.
Isolated significant
flash floods possible.



Wednesday

**MARGINAL
(MRGL)**

Isolated flash
floods possible

Localized and
primarily affecting
places that can
experience rapid
runoff with heavy
rainfall.

**SLIGHT
(SLGT)**

Scattered flash
floods possible

Mainly localized. Most
vulnerable are urban
areas, roads, small
streams and washes.
Isolated significant
flash floods possible.

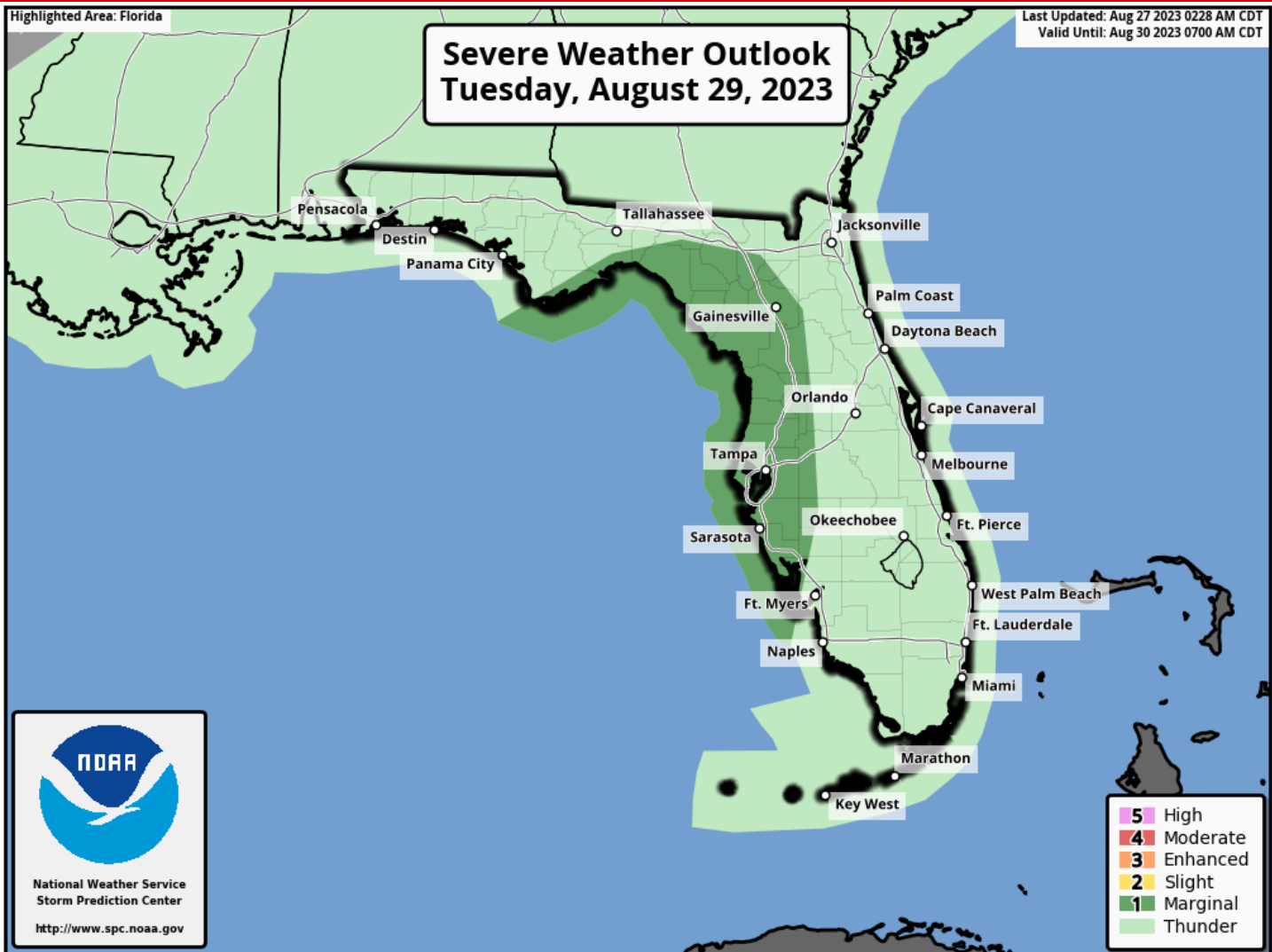
The Weather Prediction Center (WPC) is forecasting a **Marginal Risk (level 1 of 4) for Flash Flooding** across Southwest Florida on Monday as some of the moisture associated with TD Ten is pushed into the area. There is also a **Marginal Risk** of flash flooding in the western Panhandle associated with a slow-moving cold front.

On Tuesday and Wednesday, the risk for intense downpours leading to instances of **flash flooding** increases for much of the state as TD Ten moves across the region. The area most at risk will be the eastern Florida Panhandle, Florida Big Bend, Suwannee Valley, as well as portions of Northeast and West-Central Florida, where a **Slight Risk (level 2 of 4)** is forecast.



Severe Weather Outlook – Tues.

From the Storm Prediction Center



The Storm Prediction Center (SPC) is outlooking a **Marginal Risk (level 1 of 5) for Severe Weather** along Florida's Gulf Coast, Big Bend, and eastern Panhandle Tuesday night into Wednesday morning. Isolated embedded tornadoes cannot be ruled out within outer rainbands as this system approaches the coastline. While it is too early to discuss the exact timing and location of the tropical tornado threat, the greater risk will be likely along the eastern side of the storm.



Elevated Rip Current Risk

Panhandle & East Coast Beaches



A **moderate to high risk of rip currents** will largely continue along Florida East Coast and Panhandle beaches through midweek. Elevated long-period swell from distant Hurricane Franklin and approaching Tropical Storm Idalia will lead to dangerous beach and boating conditions along all Florida beaches by Monday evening. A **moderate to high risk of rip currents** can be expected to continue through Thursday, at least.



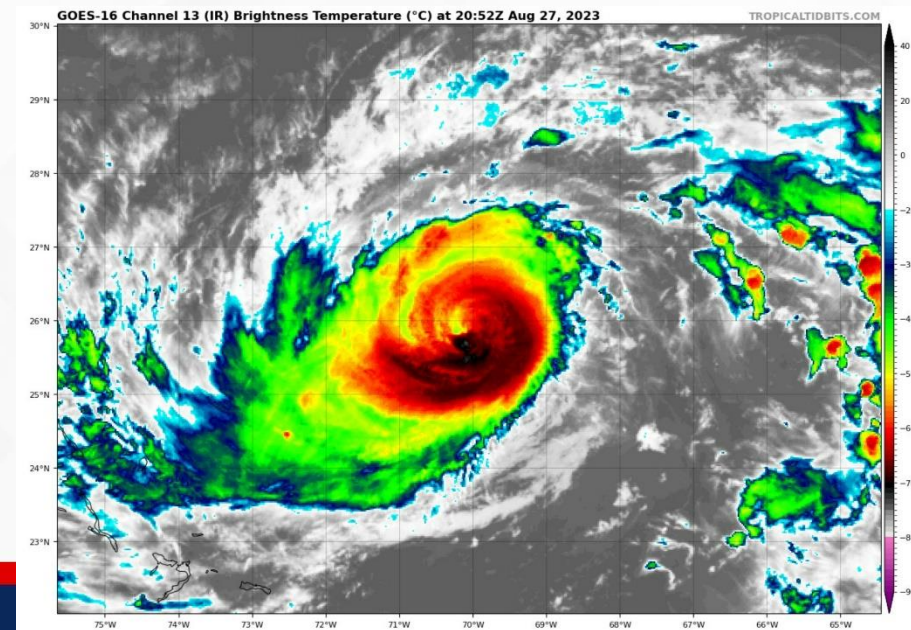
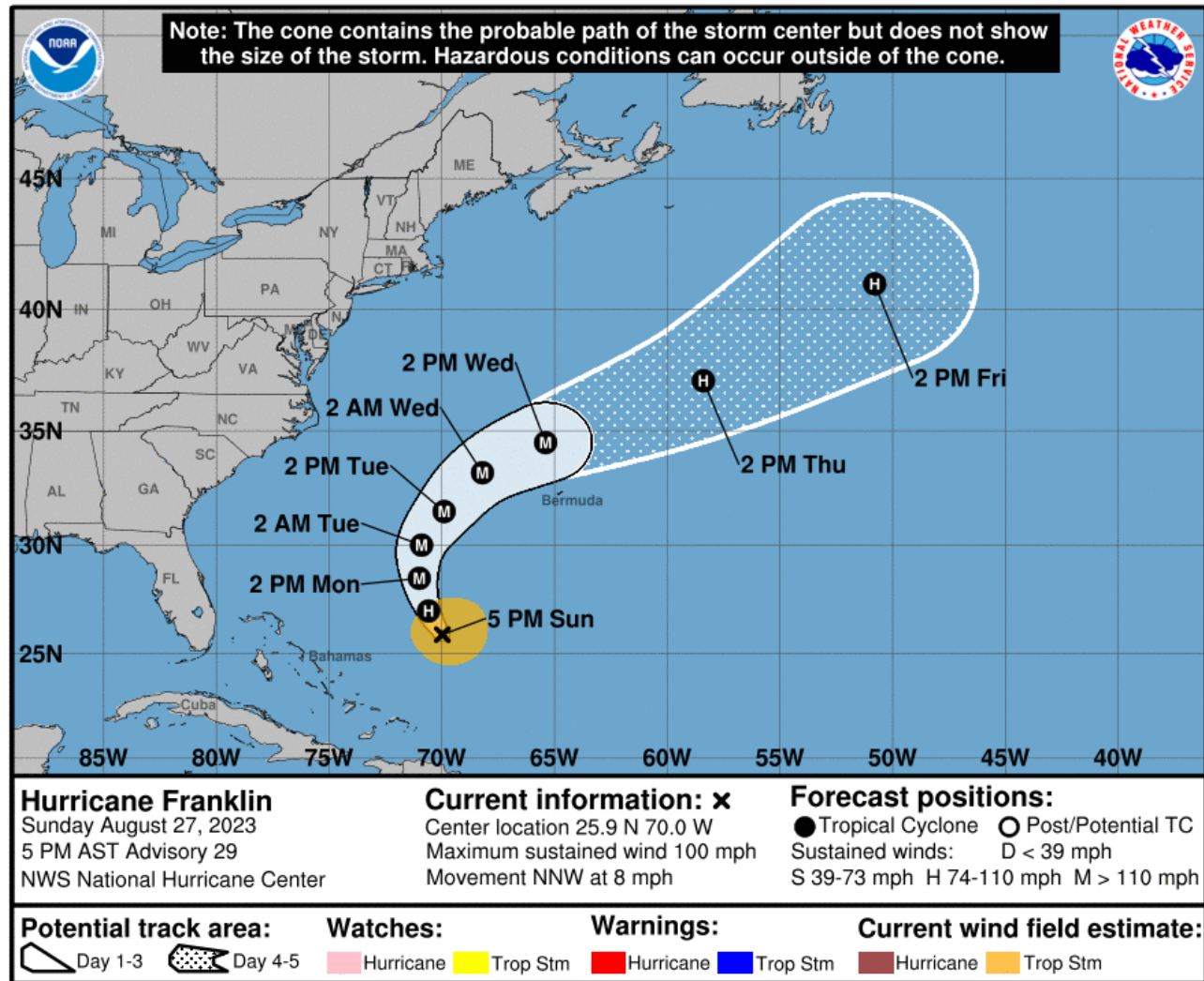
Forecast Cone

Hurricane Franklin ([LINK](#))

- **Location:** 320 miles NNE of Grand Turk Island; 625 mi E Miami
- **Maximum Sustained Winds:** 100 mph; Category 2
- **Current Movement:** NNW at 8 mph
- **FL Watches/Warnings:** None

A north-northwest motion is expected to continue tonight, with a northward and north-northeastward motion into the early part of the upcoming week. Additional strengthening is forecast, and Franklin is forecast to become a major hurricane on Monday.

Franklin poses no direct threat to Florida; however, and elevated risk of rip currents and wave heights will be possible along Atlantic Coast beaches over the next several days.





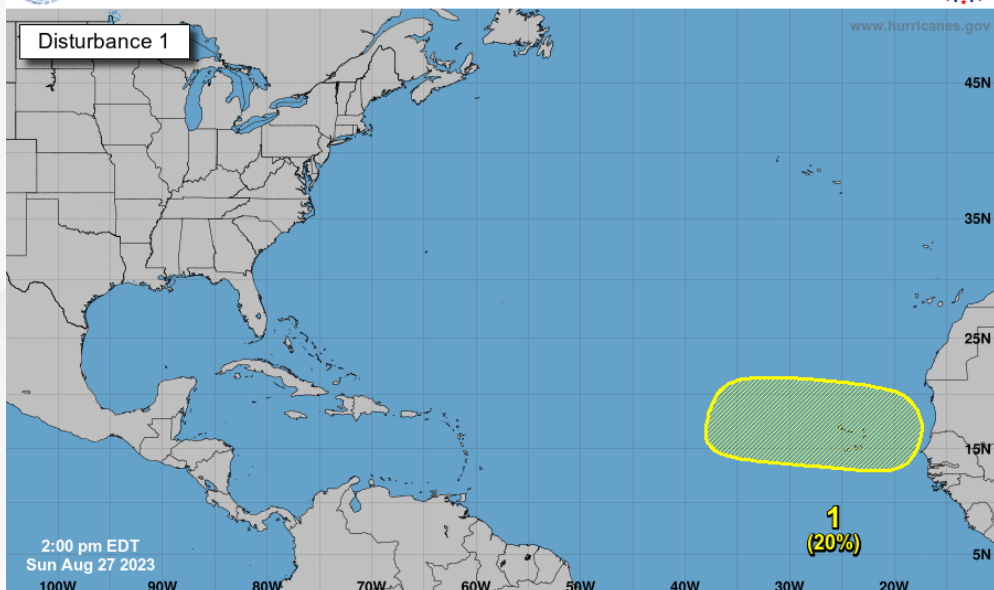
Tropical Weather Outlook

Disturbance 1 – Eastern Tropical Atlantic ([LINK](#))



Seven-Day Graphical Tropical Weather Outlook

National Hurricane Center Miami, Florida



Current Disturbances and Seven-Day Cyclone Formation Chance: ✕ < 40% ✕ 40-60% ✕ > 60%
Tropical or Sub-Tropical Cyclone: ○ Depression ○ Storm ○ Hurricane
○ Post-Tropical Cyclone or Remnants

Near 0%

48 Hour Formation



20%

7 Day Formation

A tropical wave is forecast to move off the west coast of Africa in a couple of days. Some slow development of this system is possible later this week while the system moves westward across the eastern tropical Atlantic.

This system poses no threat to Florida at this time.

- * Formation chance through 48 hours...low...near 0%.
- * Formation chance through 7 days...low...20%.



Summary

Tropical Storm Idalia:

- Tropical Depression Ten was upgraded to Tropical Storm Idalia (ee-DAL-ya) with the 11:00 AM EDT update.
- As of 5:00 PM EDT Sunday, Tropical Storm Idalia was located 95 miles east-southeast of Cozumel, Mexico, or approximately 717 miles south-southwest of Tallahassee, FL, and moving slowly northeastward around 3 mph.
- A slow, possibly erratic, motion is expected overnight, followed a slow north to north-northeastward motion Monday and Tuesday. On the forecast track, the center will move over the eastern Gulf of Mexico on Monday and Tuesday, then approach the northeast Gulf Coast late Tuesday.
- Maximum sustained winds remain near 40 mph, but gradual intensification is expected to occur. Tropical Storm Idalia is expected to become a hurricane by early Tuesday over the southeastern Gulf of Mexico.
- Computer models indicate that this system will continue to intensify until landfall along the Florida Big Bend coast due to warm sea surface temperatures and only moderate wind shear in the area.

Hurricane Franklin:

- As of 5:00 PM EDT Sunday, Hurricane Franklin was located about 320 miles north-northeast of Grand Turk Islands, or approximately 625 miles east of Miami, and is moving north-northwest at 8 mph.
- This motion is expected to continue today, followed by a northward and north-northeastward turn for the upcoming week.
- Maximum sustained winds have increased to near 100 mph, and additional strengthening is expected. Franklin is forecast to become a major hurricane by Monday, the first of the 2023 Atlantic season.
- *Hurricane Franklin poses no direct threat to Florida; however, long-period ocean swells and an elevated risk for rip currents can be anticipated along Florida East Coast beaches.*

Eastern Tropical Atlantic:

- A tropical wave is forecast to move off the west coast of Africa in a few days.
- Some slow development is possible later this week as the system moves westward across the Tropical Atlantic.
- There is a low (near 0%) chance of development over the next 48 hours and a low (20%) chance of development over the next 7 days.
- *This system poses no direct threat to Florida over the next 5-7 days, at least.*

The next briefing package will be issued on Monday morning. For the latest information, please visit the [National Hurricane Center website](#).



Summary

Florida Outlook:

- Hot and humid conditions are expected to continue into Monday afternoon with high temperatures in the 90s and triple digit heat index values (100-110) statewide.
- Franklin poses no direct threat to Florida, but increased ocean swells will result in higher wave heights and an elevated risk of rip currents along many Atlantic Coast beaches for the next several days.
- The Storm Prediction Center (SPC) is outlooking a Marginal Risk (level 1 of 5) for Severe Weather along the western Panhandle on Monday as isolated strong to severe thunderstorms will be capable of producing frequent lightning, damaging wind gusts (45-60 mph) and heavy downpours during the peak heating hours of the day.
- Tropical moisture and scattered thunderstorms associated with Idalia are possible along portions of the Florida Gulf Florida as early as Tuesday, with greater impacts to Florida expected on Wednesday.
- The chances for tropical-storm force winds are increasing for the Florida Big Bend and coastal portions of West-Central and Southwest Florida. The potential for hurricane force winds are likely to increase areas between Tampa and Panama City in the coming days.
- Hurricane Watches have been issued along the Big Bend and through West-Central Florida, with Tropical Storm Watches extending into Southwest Florida and the Dry Tortugas.
- Storm Surge Watches extend from the Big Bend and along the Florida West Coast as storm surge totals of 2-5' along the western Big Bend and West-Central Florida through Southwest Florida, with 5-11' along the Big Bend and Nature Coast will be possible.
- Isolated tornadoes will be possible as the storm approaches the Florida Gulf Coast and the Storm Prediction Center is forecasting a marginal risk (level 1 of 5) for tornadoes on Tuesday for coastal portions of the Big Bend, Nature Coast and Southwest Florida.
- Rainfall amounts will be dependent on the forecast strength and track of Idalia, but forecasts indicate the potential for 3-6" of rain with isolated amounts of 10" possible along the Florida West Coast and Florida Big Bend as the system moves into the area, leading to the potential for flash flooding concerns.
- A Slight Risk for Flash Flooding (level 2 of 4) exists along much of the Florida Gulf Coast, with a Marginal Risk (level 1 of 4) for flash flooding forecast for the eastern Florida Peninsula and far western Panhandle.
- The potential for coastal flooding and storm surge will continue to be evaluated over the coming hours, but increased wave heights are expected to arrive Tuesday and Wednesday. Additional coastal flooding statements and products may be issued as necessary. Storm Surge Warnings will likely be issued Monday and Tuesday.

The next briefing package will be issued on Monday morning. For the latest information, please visit the [National Hurricane Center website](#).



Tropical Update



Created by:

Caitlyn Gillespie, Deputy State Meteorologist

Caitlyn.Gillespie@em.myflorida.com

Kennedy Tartt, Assistant State Meteorologist

Kennedy.Tartt@em.myflorida.com

State Meteorological Support Unit

Florida Division of Emergency Management

Users wishing to subscribe (approval pending) to this distribution list, register at:

https://public.govdelivery.com/accounts/FLDEM/subscriber/new?topic_id=SERT_Met_Tropics

Other reports available for subscription are available at:

<https://public.govdelivery.com/accounts/FLDEM/subscriber/new?preferences=true>