



Tropical Update



8:00 AM EDT

Sunday, August 27, 2023

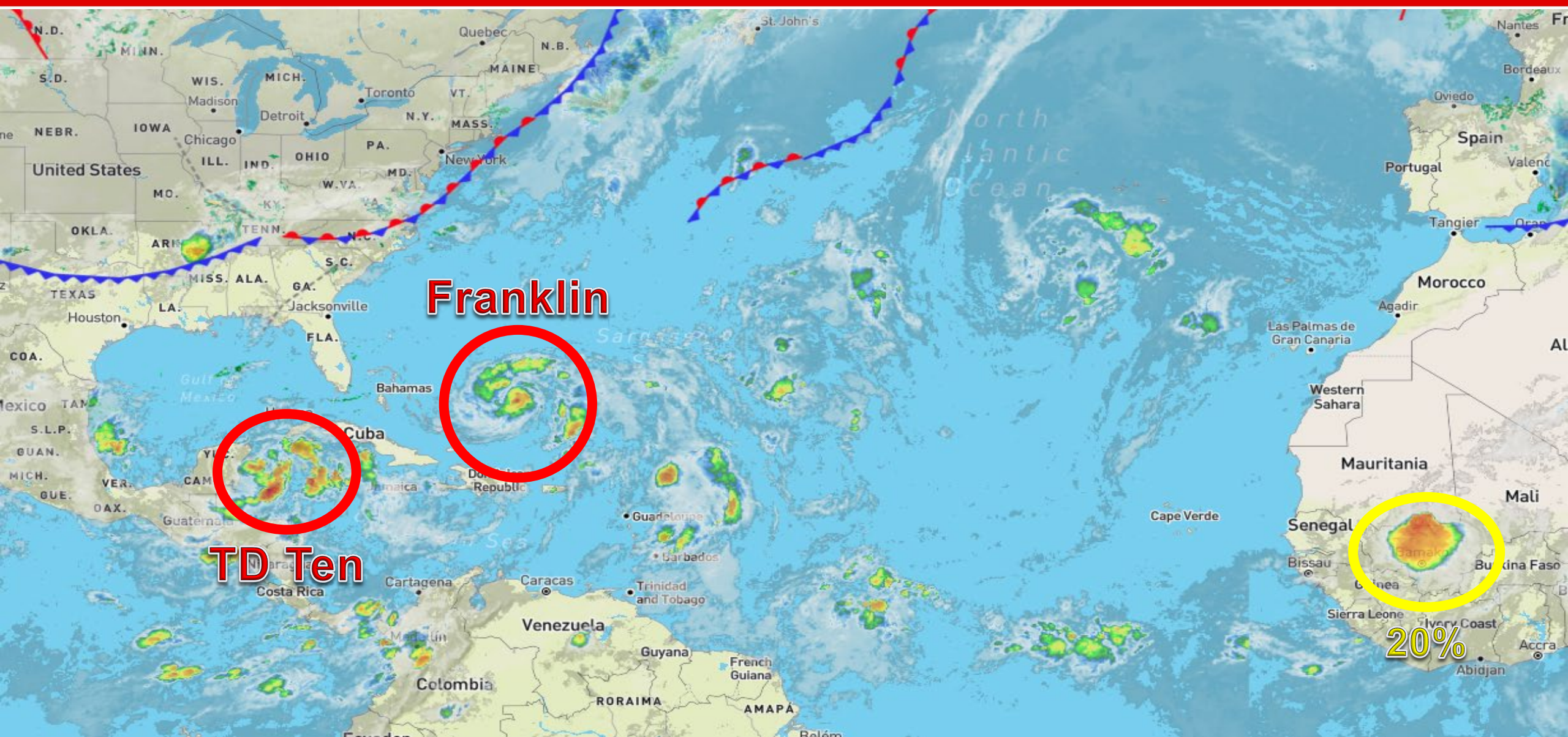
Hurricane Franklin, Tropical Depression Ten, & Eastern Tropical Atlantic

This update is intended for government and emergency response officials, and is provided for informational and situational awareness purposes only. Forecast conditions are subject to change based on a variety of environmental factors. For additional information, or for any life safety concerns with an active weather event please contact your County Emergency Management or Public Safety Office, local National Weather Service forecast office, or visit the National Hurricane Center website at www.hurricanes.gov.



Atlantic Basin Satellite Image

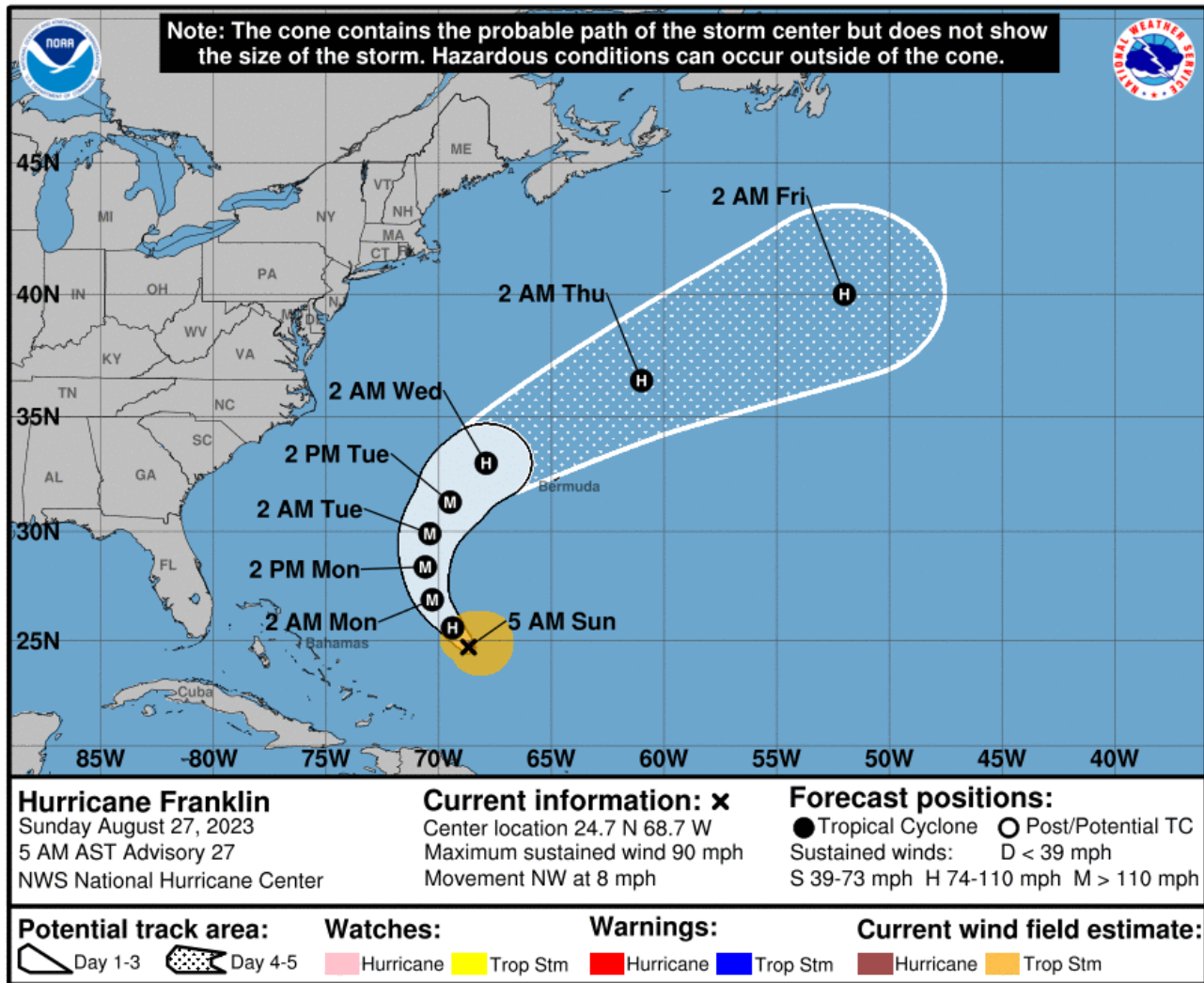
Chance of development: None Low Medium High





Forecast Cone

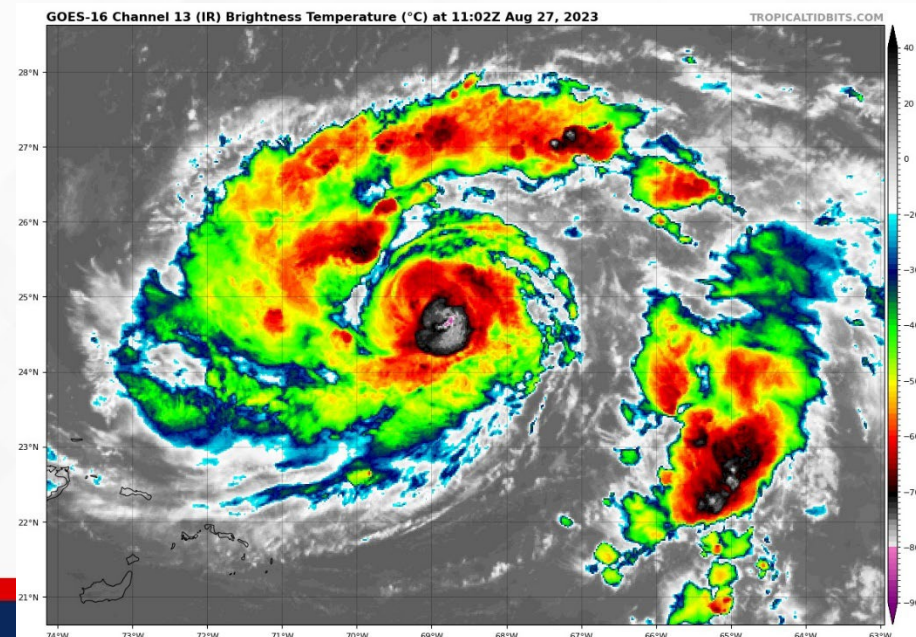
Hurricane Franklin ([LINK](#))



- **Location:** 270 miles NE of Grand Turk Island; 930 mi ESE Miami
- **Maximum Sustained Winds:** 90 mph; Category 2
- **Current Movement:** NW at 8 mph
- **FL Watches/Warnings:** None

A turn toward the north-northwest is expected later today, followed by a northward and north-northeastward motion into the early part of the week. Rapid strengthening is forecast over the next 24 hours, and Franklin could become a major hurricane by tonight.

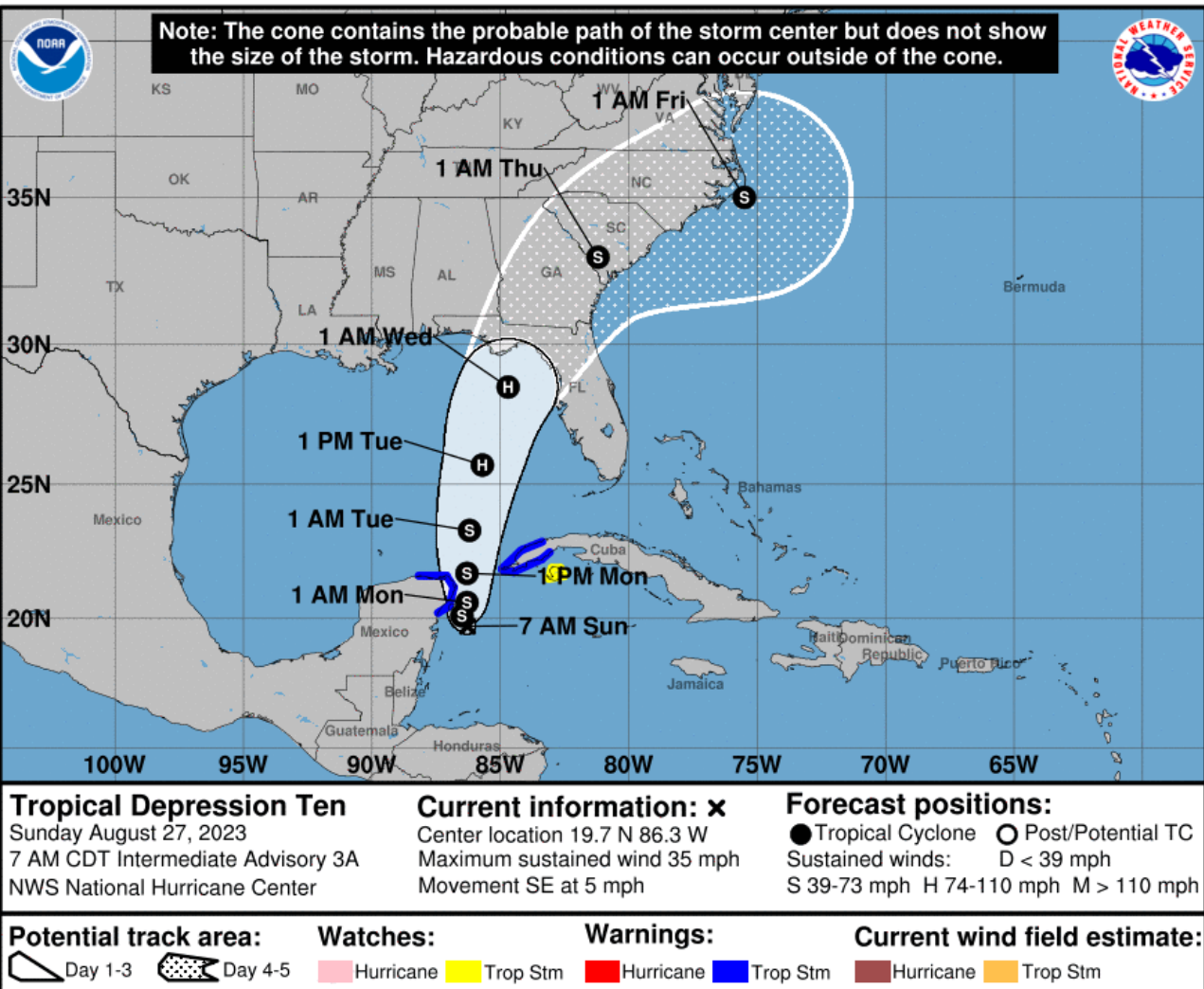
Franklin poses no direct threat to Florida; however, and elevated risk of rip currents and wave heights will be possible along Atlantic Coast beaches over the next several days.





Forecast Cone

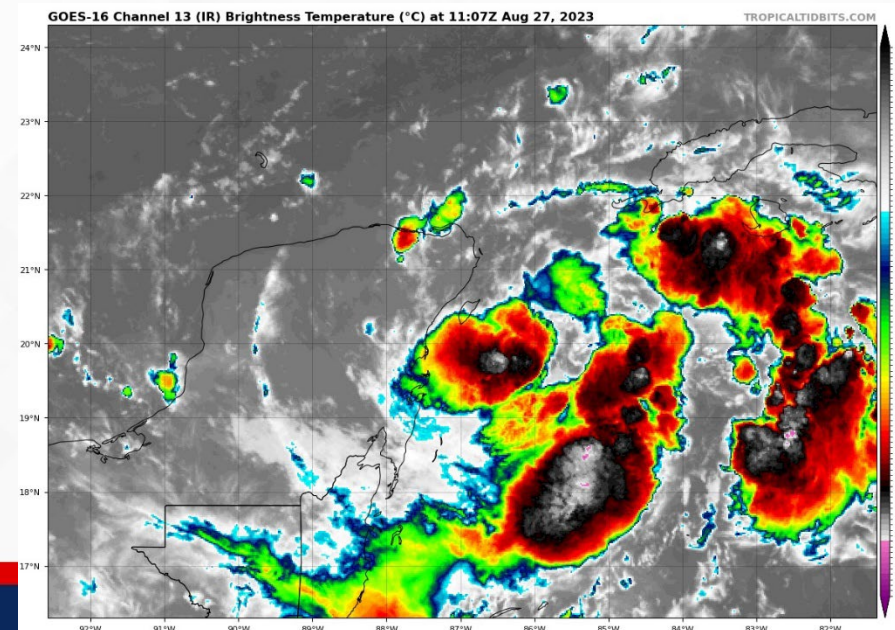
Tropical Depression Ten ([LINK](#))



- **Location:** 70 miles SE of Cozumel, Mexico; 440 mi SW Key West
- **Maximum Sustained Winds:** 35 mph
- **Current Movement:** SE at 5 mph
- **FL Watches/Warnings:** None

The depression is likely to meander near the Yucatan Channel trough early Monday. A faster motion toward the north or north-northeast is expected later Monday, bringing the system over the eastern Gulf of Mexico. The depression is expected to become a tropical storm later today, and a hurricane by Tuesday.

Tropical Storm and Hurricane Watches for portions of Florida could be issued as early as this afternoon.



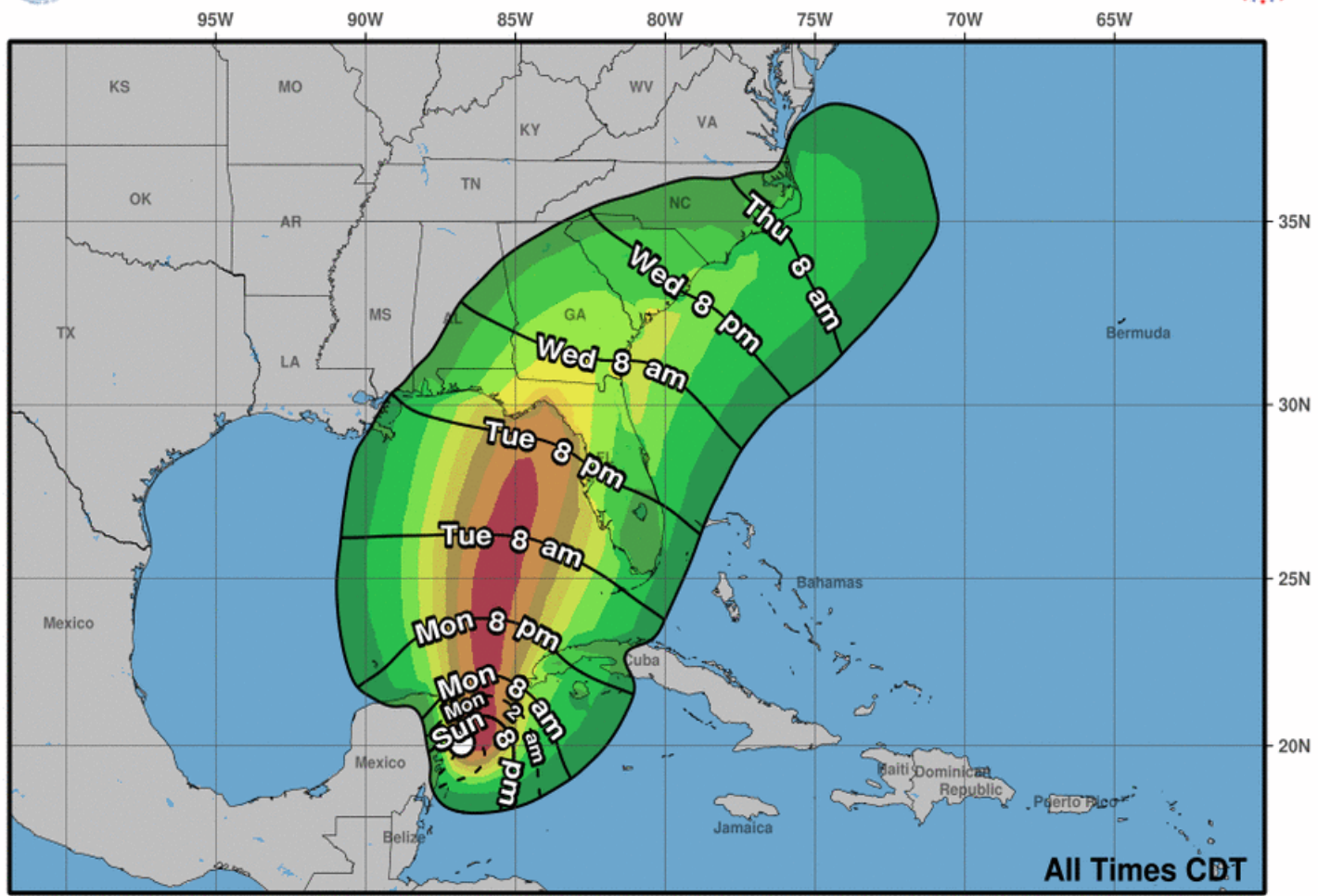


Tropical Storm-Force Wind Probabilities

Tropical Depression Ten



Most Likely Arrival Time of Tropical-Storm-Force Winds



Tropical Depression Ten
Sun. Aug. 27, 2023 4 am CDT
Advisory 3

Storm Location & Wind Speed

○ < 34 kt (39 mph)

○ 34-63 kt (39-73 mph)

● ≥ 64 kt (74 mph)

5-day chance of receiving sustained 34+ kt (39+ mph) winds

5

10

20

30

40

50

60

70

80

90

100 %

- Key West – 20%
 - Naples – 27%
 - Tampa – 48%
 - Orlando – 13%
 - Cedar Key – 58%
 - Tallahassee – 38%
 - St. Marks – 42%
 - Apalachicola – 62%
 - Panama City – 50%
 - Jacksonville – 22%
- *The numbers in parenthesis (to be added in next briefing packet) will show the change in probability since the previous briefing packet.***

Tropical storm-force winds could start as early as Tuesday afternoon along Florida's Gulf Coast; however, tropical storm-force winds will most likely arrive Tuesday afternoon along the West-Central Florida Coast, gradually expanding northward to the Florida Nature Coast and Big Bend Tuesday evening and night.

The chances for tropical-storm force winds are increasing for the Florida Big Bend and coastal portions of West-Central and Southwest Florida. The potential for hurricane-force winds are likely to increase areas between Tampa and Panama City in the coming days.



Key Messages

Tropical Depression Ten



Key Messages for Tropical Depression Ten

Advisory 3: 4:00 AM CDT Sun Aug 27, 2023



1. Heavy rainfall from Tropical Depression Ten is expected across the eastern Yucatan Peninsula and western Cuba. The heavy rainfall may produce areas of flash and urban flooding, as well as landslides, across western Cuba. The depression is forecast to become a tropical storm later today, and tropical storm conditions are expected over portions of the Yucatan Peninsula and extreme western Cuba where a Tropical Storm Warning is in effect. Tropical storm conditions are possible on the Isle of Youth, where a Tropical Storm Watch is in effect.

2. The depression is forecast to strengthen during the next few days and could become a hurricane over the eastern Gulf of Mexico, bringing a potential of dangerous storm surge, heavy rainfall, and strong winds to portions of the west coast of Florida and the Florida Panhandle by the middle of this week. Heavy rainfall is also likely to spread into portions of the Southeast U.S. by mid to late week. Although it is too soon to specify the exact location and magnitude of these impacts, residents in these areas should monitor updates to the forecast of this system and ensure that they have their hurricane plan in place.



For more information go to hurricanes.gov

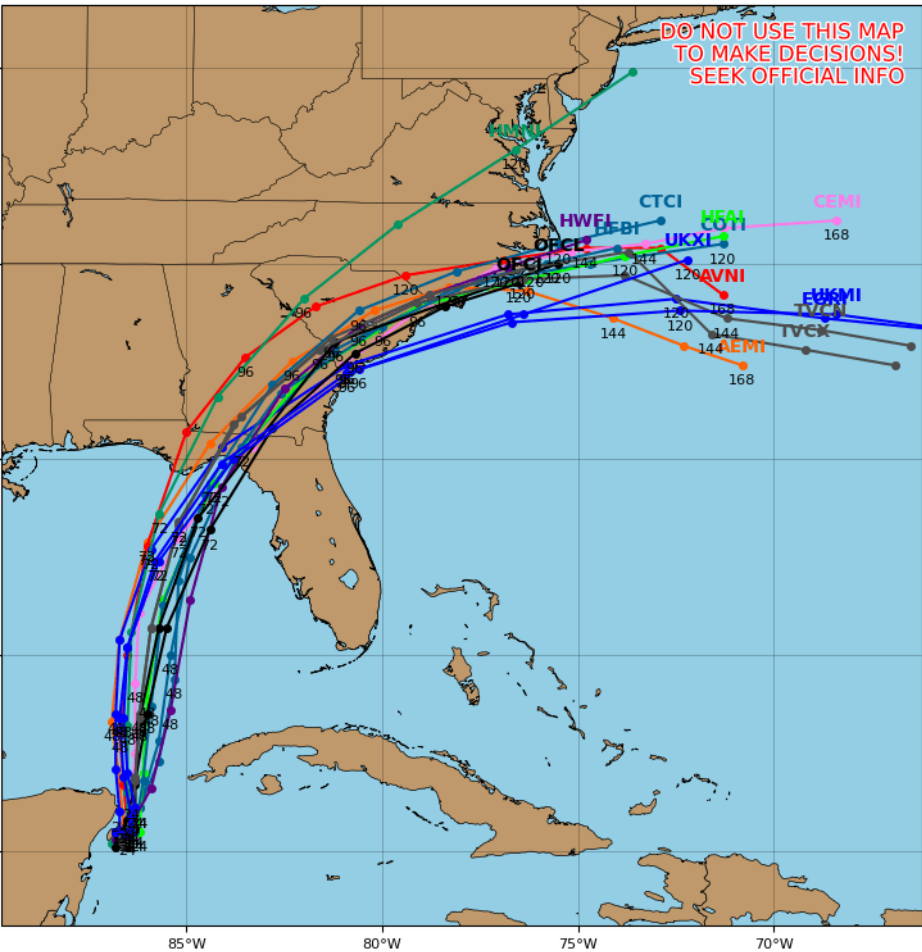


Model Forecasts – Next 5 Days

Tropical Depression Ten

Tropical Depression 10L Model Track Guidance

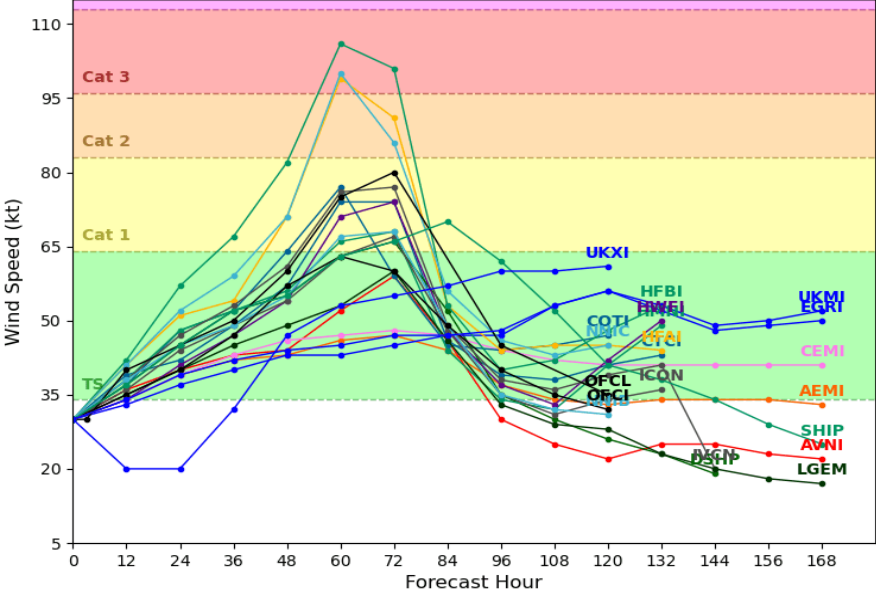
Initialized at 06z Aug 27 2023 Levi Cowan - tropicaltidbits.com



Computer model guidance from this morning is coming into better agreement regarding TD Ten's forecast track as this system accelerates northward to north-northeastward over the eastern Gulf of Mexico over the next 48-72 hours. There remains disagreement across the computer models with respect to the system's forecast intensity; however, there will be several reconnaissance aircraft flights into TD Ten over the next 24 hours which will aid in computer model initialization for intensity guidance. Computer models indicate that this system will continue to intensify until landfall along the Florida Big Bend coast due to warm sea surface temperatures and only moderate wind shear in the area.

Tropical Depression 10L Model Intensity Guidance

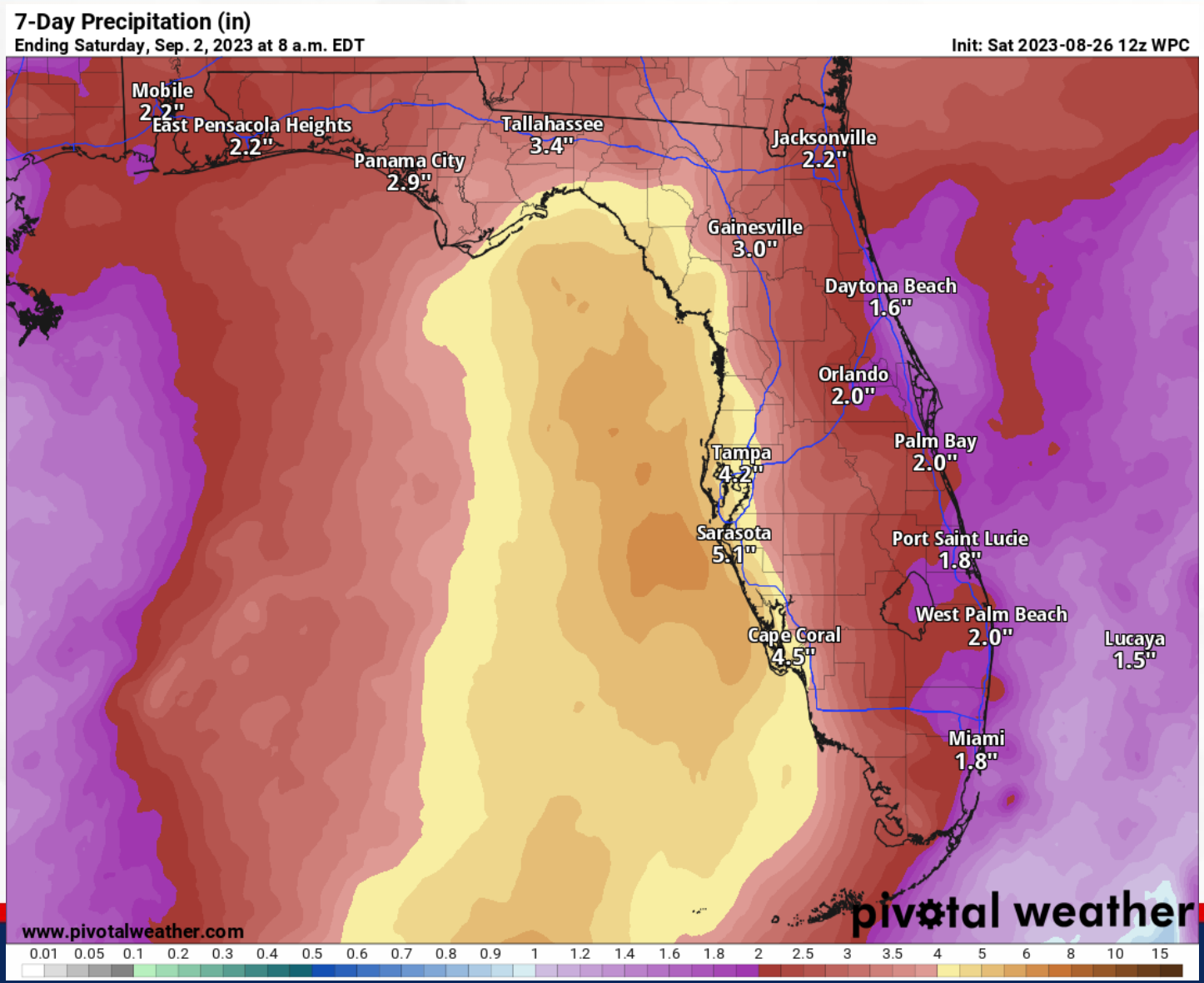
Initialized at 06z Aug 27 2023 Levi Cowan - tropicaltidbits.com





7-Day Forecast Rainfall

From the National Weather Service & Weather Prediction Center

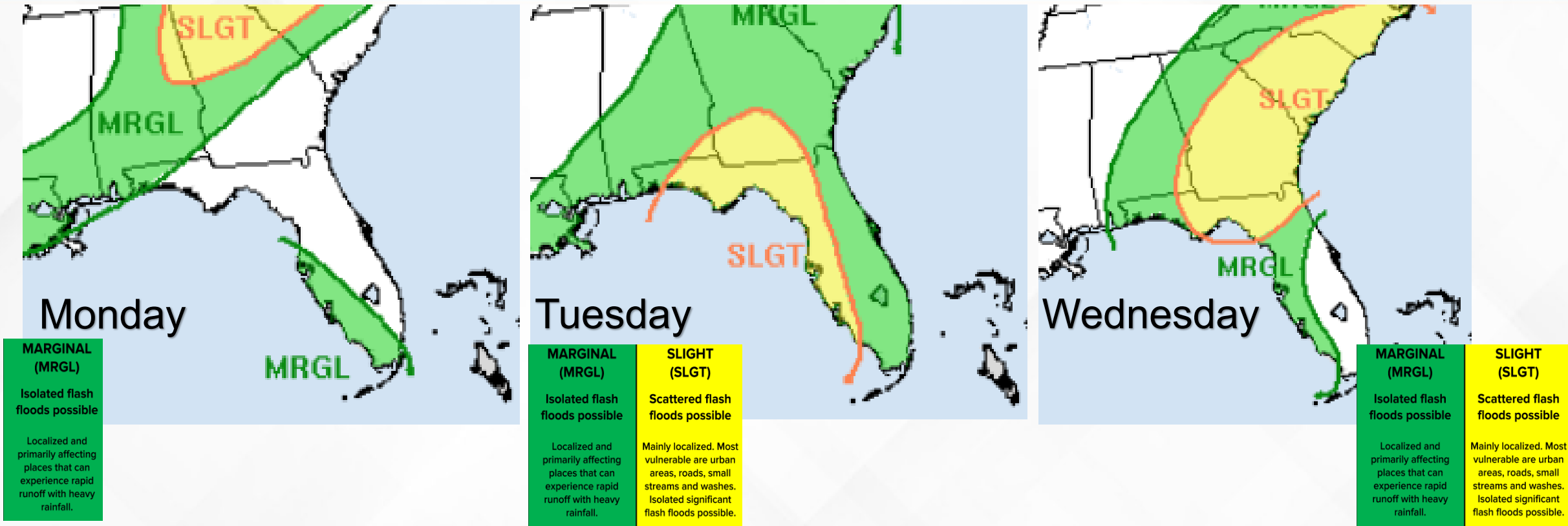


Exact rainfall amounts will be track-dependent, but there is the potential for heavy rainfall amounts of 3-6", with the higher amounts to the right of the track of the system. Isolated locations could receive up to 10" of rain from this system, with coastal portions of the Florida West Coast and Big Bend being the most at risk for these higher amounts.



Flash Flood Outlook – Mon, Tue, Wed

From the Weather Prediction Center



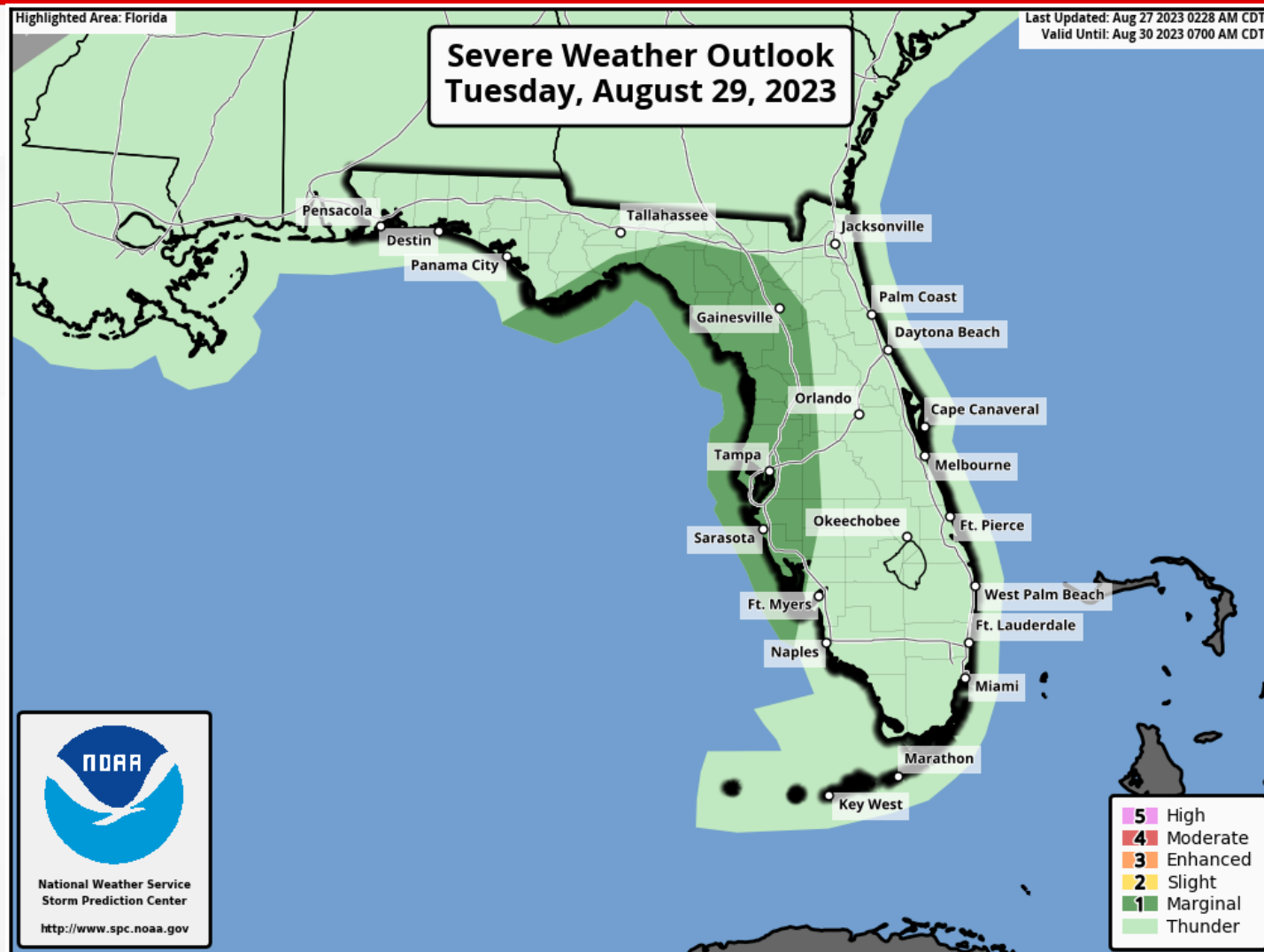
The Weather Prediction Center (WPC) is forecasting a **Marginal Risk (level 1 of 4) for Flash Flooding** across Southwest Florida on Monday as some of the moisture associated with TD Ten is pushed into the area. There is also a **Marginal Risk** of flash flooding in the western Panhandle associated with a slow-moving cold front.

On Tuesday and Wednesday, the risk for intense downpours leading to instances of **flash flooding** increases for much of the state as TD Ten moves across the region. The area most at risk will be the eastern Florida Panhandle, Florida Big Bend, Suwannee Valley, as well as portions of Northeast and West-Central Florida, where a **Slight Risk (level 2 of 4)** is forecast.



Severe Weather Outlook – Tues.

From the Storm Prediction Center



The Storm Prediction Center (SPC) is outlooking a **Marginal Risk (level 1 of 5) for Severe Weather** along Florida's Gulf Coast, Big Bend, and eastern Panhandle Tuesday night into Wednesday morning. Isolated embedded tornadoes cannot be ruled out within outer rainbands as this system approaches the coastline. While it is too early to discuss the exact timing and location of the tropical tornado threat, the greater risk will be likely along the eastern side of the storm.



Elevated Rip Current Risk

Panhandle & East Coast Beaches



Easterly to east-northeasterly flow will maintain a **moderate to high risk of rip currents** along all Atlantic Coast beaches today, along with breaking wave heights of 2-4'. A **moderate risk of rip currents** is expected at many Florida Panhandle beaches during the afternoon.



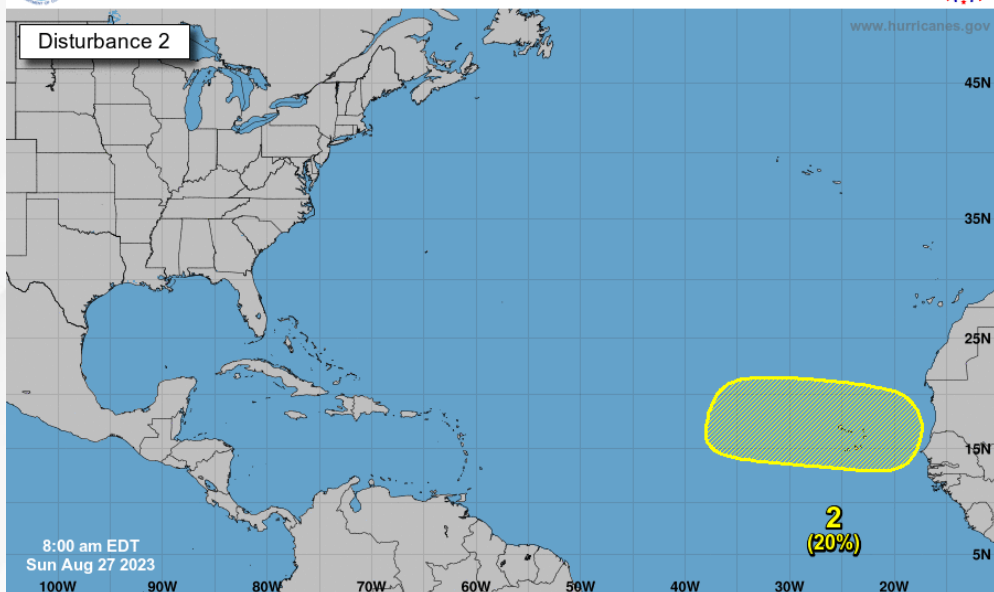
Tropical Weather Outlook

Disturbance 2 – Eastern Tropical Atlantic ([LINK](#))



Seven-Day Graphical Tropical Weather Outlook

National Hurricane Center Miami, Florida



Current Disturbances and Seven-Day Cyclone Formation Chance: ✕ < 40% ✕ 40-60% ✕ > 60%
Tropical or Sub-Tropical Cyclone: ○ Depression ○ Storm ○ Hurricane
○ Post-Tropical Cyclone or Remnants

Near 0%

48 Hour Formation



20%

7 Day Formation

A tropical wave is forecast to move off the west coast of Africa in a couple of days. Some slow development of this system is possible later this week while the system moves westward across the eastern tropical Atlantic.

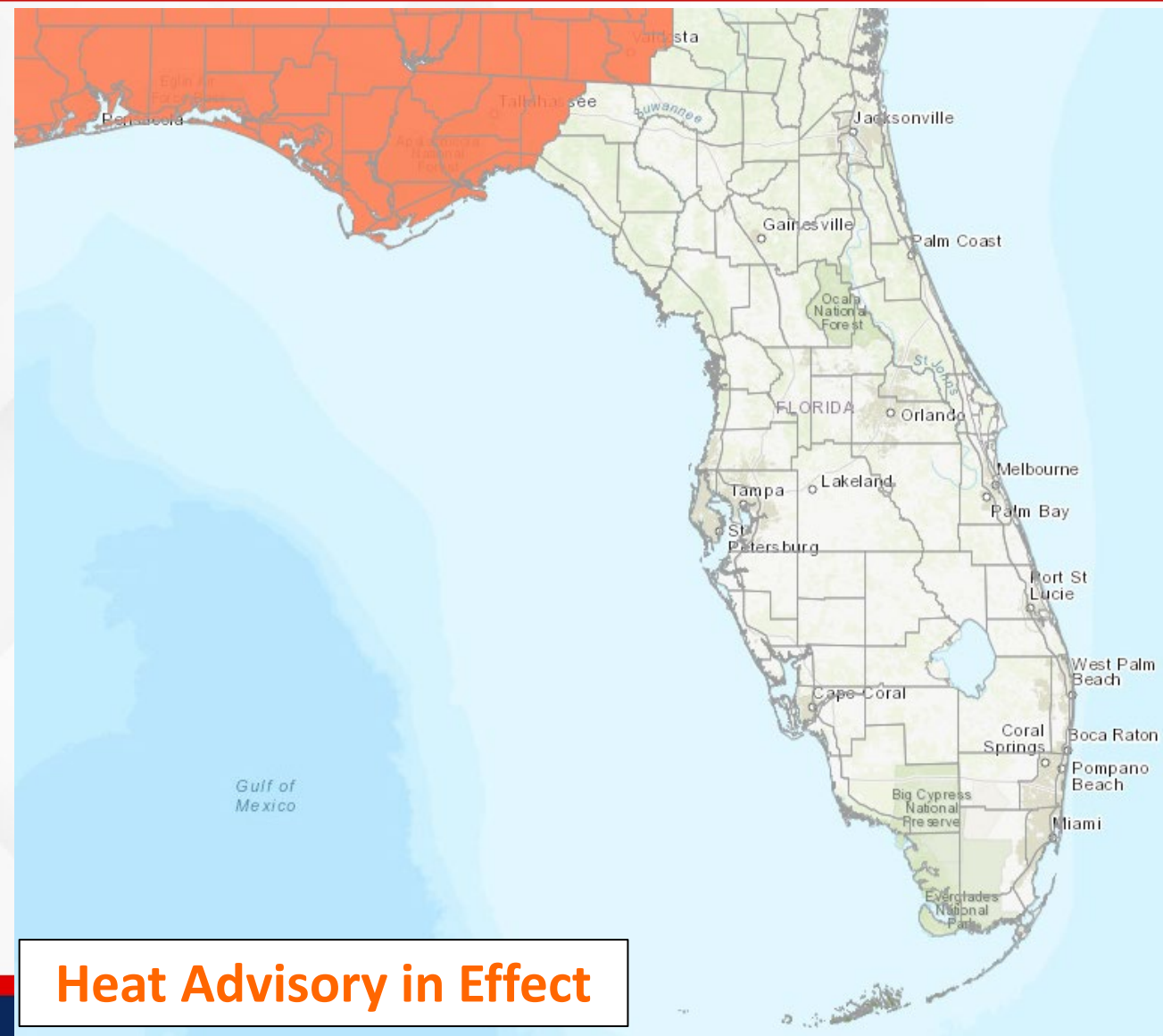
This system poses no threat to Florida at this time.

- * Formation chance through 48 hours...low...near 0%.
- * Formation chance through 7 days...low...20%.



Heat Advisories

Today



Dangerously hot and humid conditions can be expected across the state as hot temperatures will reach the low to middle 90s across the state and approach the upper 90s across the Peninsula and 100-105 across the Panhandle. **Heat Advisories** continue across the rest of North Florida as **heat indices of 105-110 can be expected.**

Heat Advisory in Effect



Summary

Tropical Depression Ten:

- 93L was upgraded to Tropical Depression Ten at 5:00 PM EDT on Saturday.
- As of 5:00 AM EDT Sunday, TD 10 was located 30 miles south-southeast of Cozumel, Mexico, or approximately 730 miles south-southwest of Tallahassee, FL, and moving slowly south around 5 mph.
- TD 10 is likely to meander near the Yucatan Channel through early Monday, followed by a faster motion toward the north or north-northeast as it enters the southeastern Gulf of Mexico.
- Maximum sustained winds remain near 35mph, but gradual intensification is expected to occur and the depression is forecast to become Tropical Storm Idalia later today and a hurricane by Tuesday.
- Computer models indicate that this system will continue to intensify until landfall along the Florida Big Bend coast due to warm sea surface temperatures and only moderate wind shear in the area.

Hurricane Franklin:

- At 11:00 AM EDT Saturday, Franklin became the 2nd hurricane of the 2023 Atlantic Season.
- As of 5:00 AM EDT Sunday, Hurricane Franklin was located about 575 miles south-west of Bermuda, or approximately 725 miles east of Miami, and is moving northwest at 8 mph.
- A turn toward the north-northwest is expected later today, followed by a northward and north-northeastward motion into the early part of the week.
- Maximum sustained winds have increased to near 90 mph, and Rapid strengthening is forecast over the next 24 hours, and Franklin could become the first major hurricane of the season by tonight.

Eastern Tropical Atlantic:

- A tropical wave is forecast to move off the west coast of Africa in a few days.
- Some slow development is possible later this week as the system moves westward across the Tropical Atlantic.
- There is a low (near 0%) chance of development over the next 48 hours and a low (20%) chance of development over the next 7 days.
- *This system poses no direct threat to Florida over the next 5-7 days, at least.*

The next briefing package will be issued on Sunday evening. For the latest information, please visit the [National Hurricane Center website](#).



Summary

Florida Outlook:

- Hot and humid conditions persist across the Sunshine State, with Heat Advisories in effect for much of the Florida Panhandle and Big Bend this afternoon.
- Franklin poses no direct threat to Florida, but increased ocean swells will result in higher wave heights and an elevated risk of rip currents along many Atlantic Coast beaches for the next several days.
- There is a **marginal risk of severe weather (level 1 of 5)** across the Florida Panhandle and western Big Bend this afternoon and evening as a cold front in the region combined with the daily seabreeze results in stronger thunderstorms capable of producing gusty, damaging winds and frequent lightning.
- Tropical moisture and scattered thunderstorms associated with TD 10 are possible along portions of the Florida Gulf Florida as early as Tuesday, with greater impacts to Florida expected on Wednesday.
- The chances for tropical-storm force winds are increasing for the Florida Big Bend and coastal portions of West-Central and Southwest Florida. The potential for hurricane force winds are likely to increase areas between Tampa and Panama City in the coming days.
- Tropical Storm and Hurricane Watches for portions of Florida could be issued as early as this afternoon.
- Isolated tornadoes will be possible as the storm approaches the Florida Gulf Coast and the Storm Prediction Center is forecasting a marginal risk for tornadoes on Tuesday for coastal portions of the Big Bend, Nature Coast and Southwest Florida.
- Rainfall amounts will be dependent on the forecast strength and track of TD10, but forecasts indicate the potential for 3-6" of rain with isolated amounts of 10" possible along the Florida West Coast and Florida Big Bend as the system moves into the area, leading to the potential for flash flooding concerns.
- A Slight Risk for Flash Flooding (level 2 of 4) exists along much of the Florida Gulf Coast, with a Marginal Risk (level 1 of 4) for flash flooding forecast for the eastern Florida Peninsula and far western Panhandle.
- The potential for coastal flooding and storm surge will be evaluated over the next 2-3 days, but expect increased wave heights to arrive on Tuesday and Wednesday. As a result, Storm Surge Watches could be issued this evening or Monday for portions of the Florida Gulf Coast.

The next briefing package will be issued on Sunday evening. For the latest information, please visit the [National Hurricane Center website](#).



Tropical Update



Created by:

Caitlyn Gillespie, Deputy State Meteorologist

Caitlyn.Gillespie@em.myflorida.com

State Meteorological Support Unit

Florida Division of Emergency Management

Users wishing to subscribe (approval pending) to this distribution list, register at:

https://public.govdelivery.com/accounts/FLDEM/subscriber/new?topic_id=SERT_Met_Tropics.

Other reports available for subscription are available at:

<https://public.govdelivery.com/accounts/FLDEM/subscriber/new?preferences=true>