



Tropical Update



9:00 AM EDT

Saturday, August 26, 2023

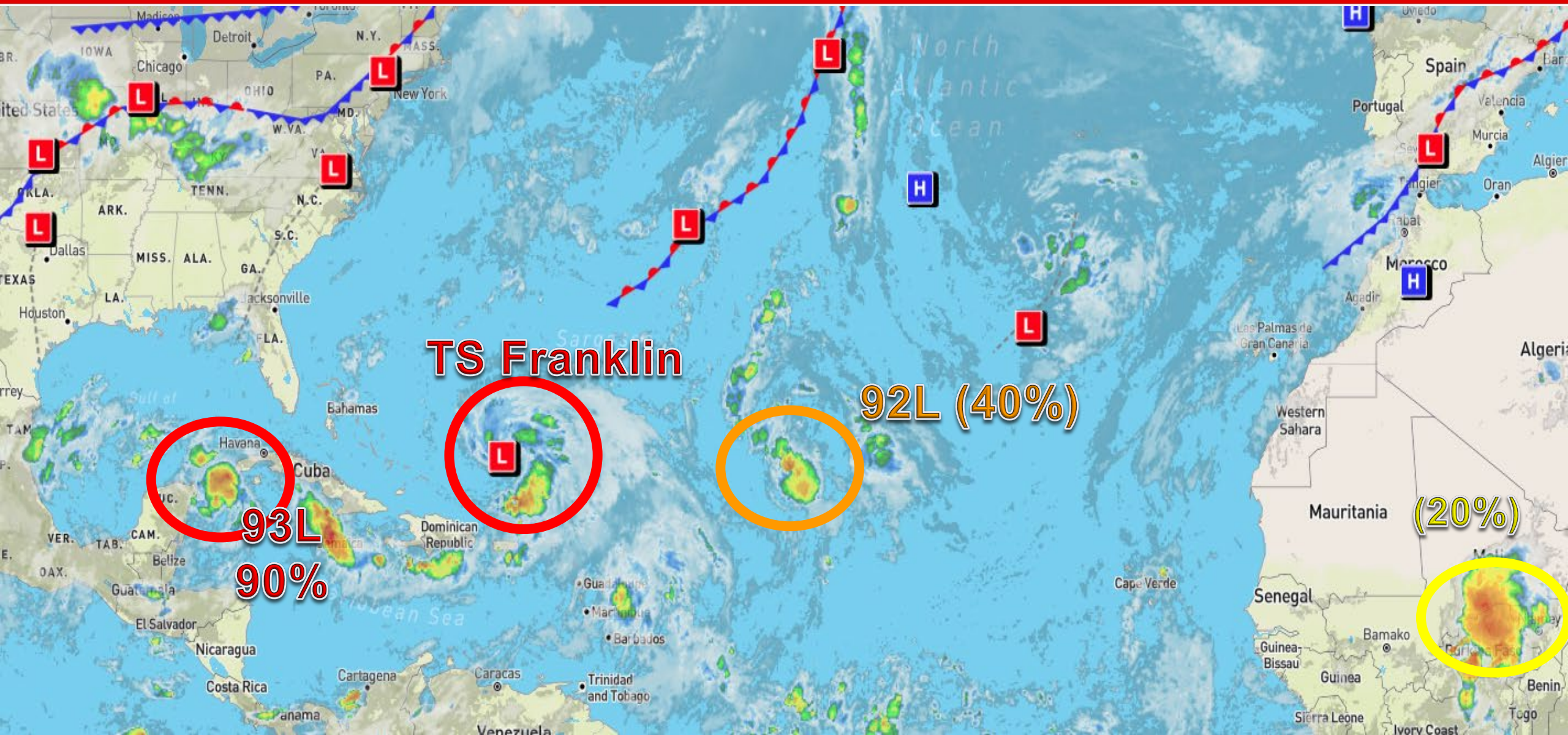
Tropical Storm Franklin, Invest 93L (90%), Invest 92L (40%), and West African Wave (20%)

This update is intended for government and emergency response officials, and is provided for informational and situational awareness purposes only. Forecast conditions are subject to change based on a variety of environmental factors. For additional information, or for any life safety concerns with an active weather event please contact your County Emergency Management or Public Safety Office, local National Weather Service forecast office, or visit the National Hurricane Center website at www.hurricanes.gov.



Atlantic Basin Satellite Image

Chance of development: — None — Low — Medium — High





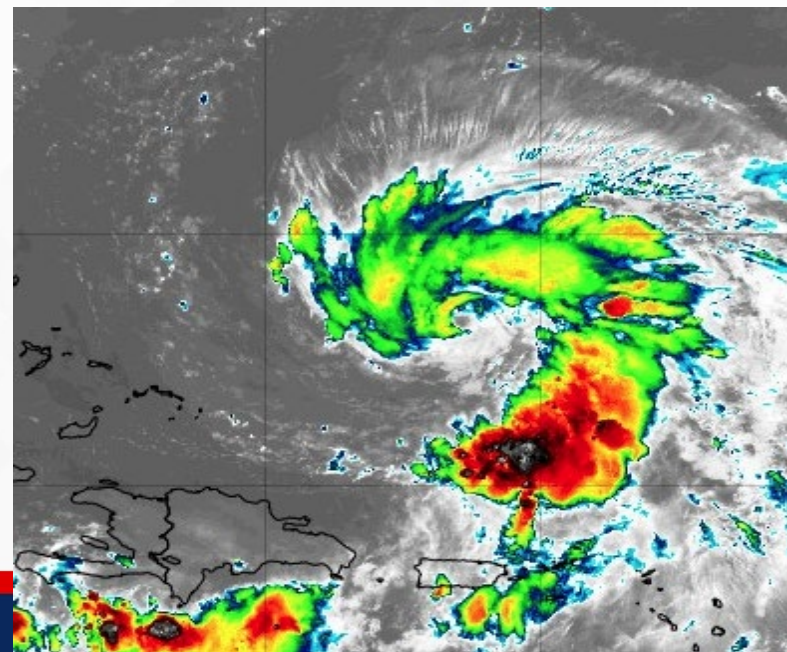
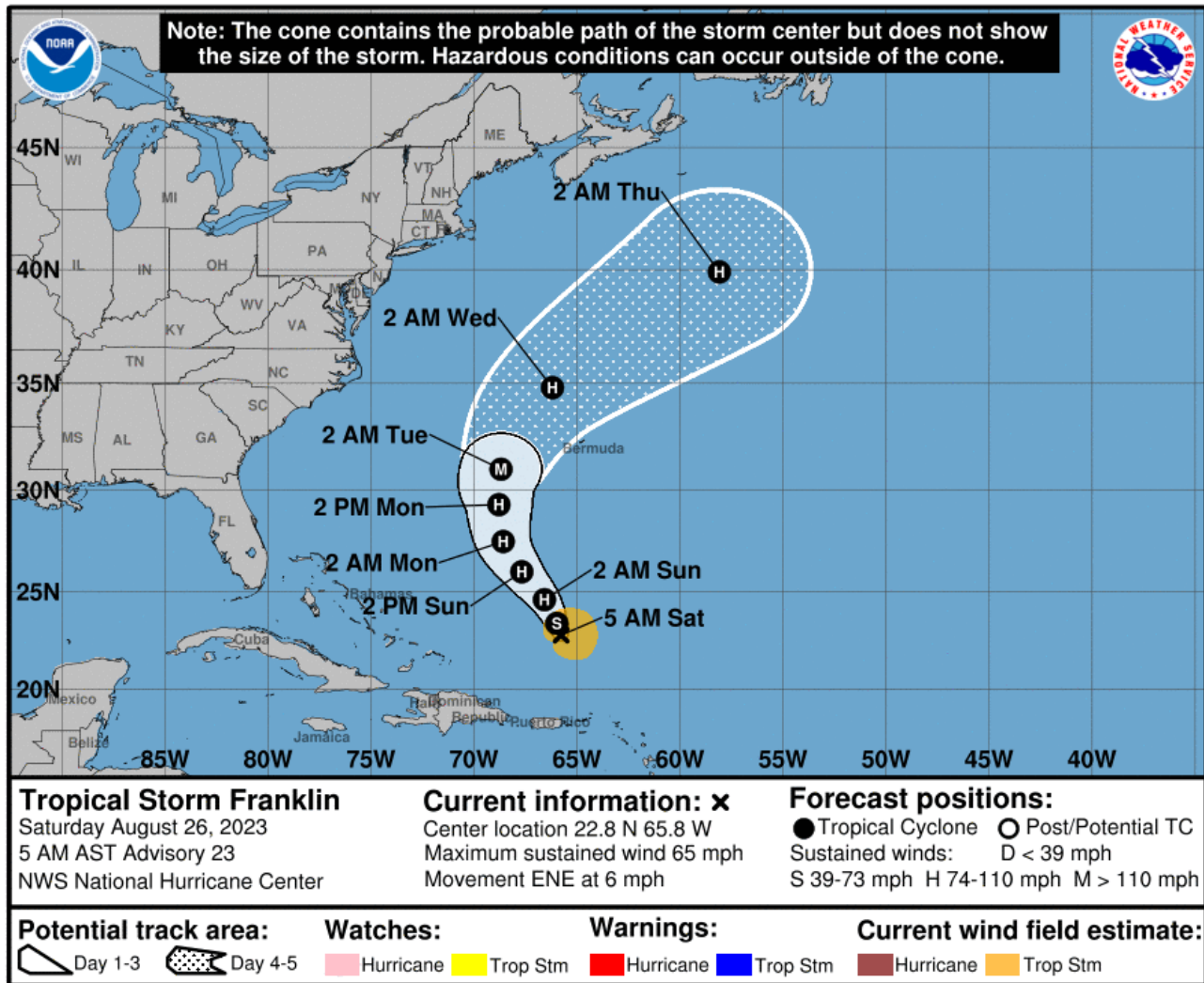
Forecast Cone

Tropical Storm Franklin ([LINK](#))

- **Location:** 350 miles ENE of Grand Turk Island; 930 mi ESE Miami
- **Maximum Sustained Winds:** 65 mph
- **Current Movement:** ENE at 6 mph
- **FL Watches/Warnings:** None

A northward or north-northwestward motion over the western Atlantic can be expected to continue through early next week. Steady strengthening is forecast, and Franklin will likely become a hurricane within the next 24-36 hours. There is also a chance it becomes the first major hurricane of the season early next week while passing west of Bermuda.

Franklin poses no direct threat to Florida; however, and elevated risk of rip currents and wave heights will be possible along Atlantic Coast beaches over the next several days.



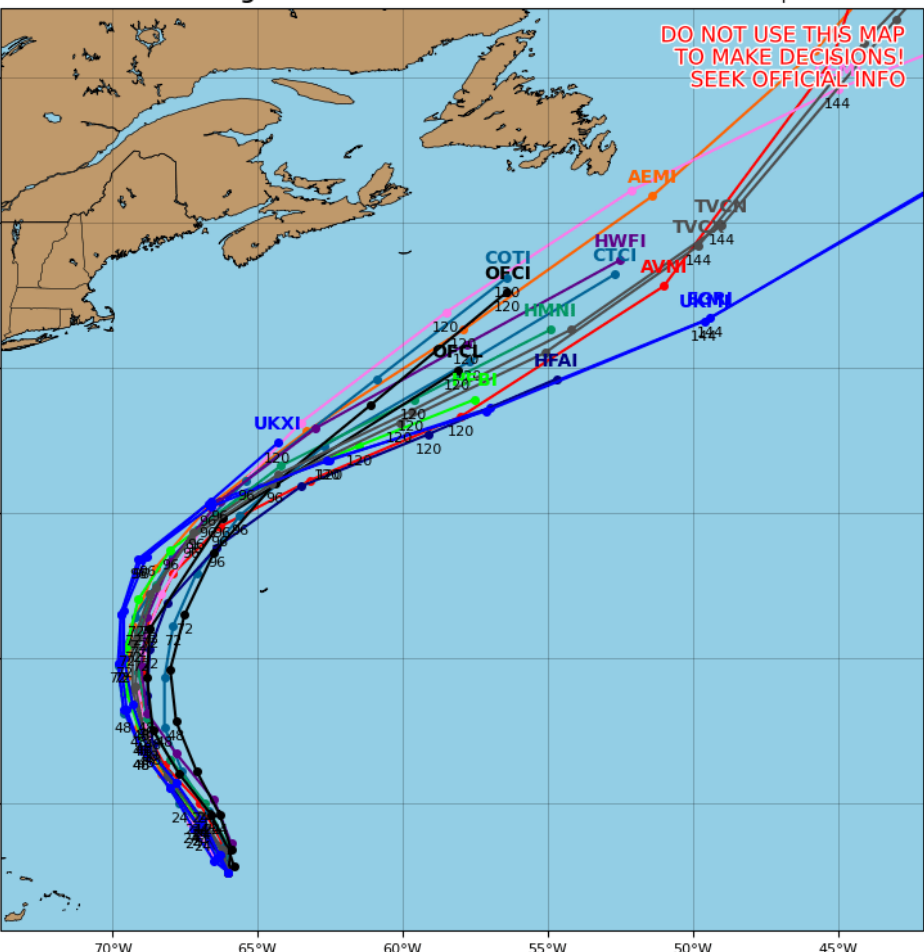


Model Forecasts – Next 5 Days

Tropical Storm Franklin

Tropical Storm FRANKLIN Model Track Guidance

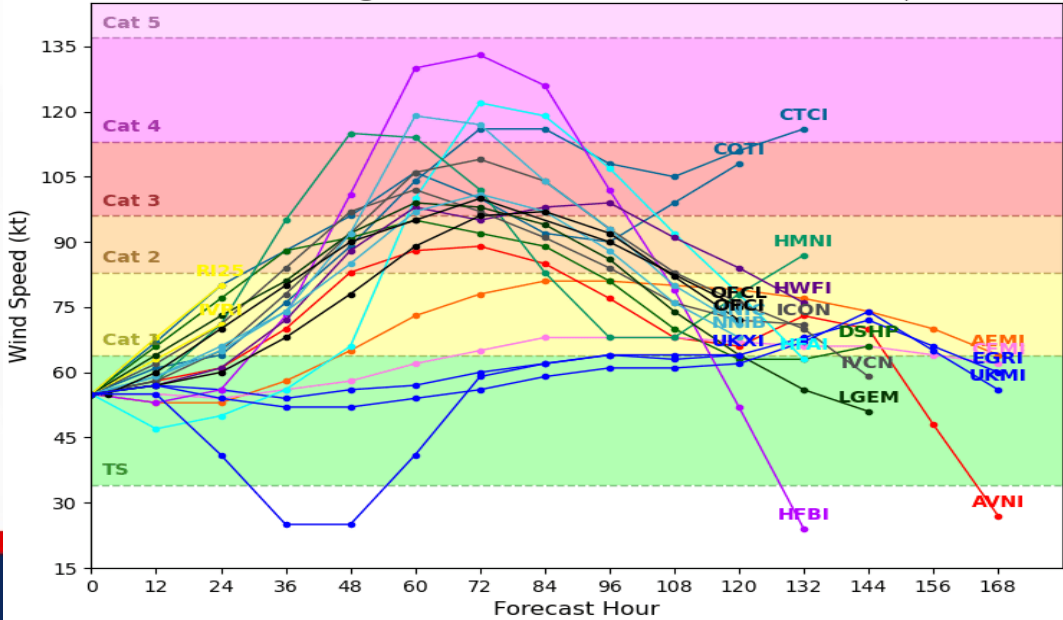
Initialized at 06z Aug 26 2023 Levi Cowan - tropicaltidbits.com



Computer models remain in very good agreement that Franklin will move north-northwestward over the western Atlantic this weekend, recurving northeastward and accelerating in the open waters by the middle of next week. Computer models also agree that conditions will be favorable for strengthening during the next 72 hours, and could even rapidly intensify into a very strong hurricane over the next day or two. Weakening is forecast by Wednesday as it moves into cooler waters and a higher shear environment.

Tropical Storm FRANKLIN Model Intensity Guidance

Initialized at 06z Aug 26 2023 Levi Cowan - tropicaltidbits.com





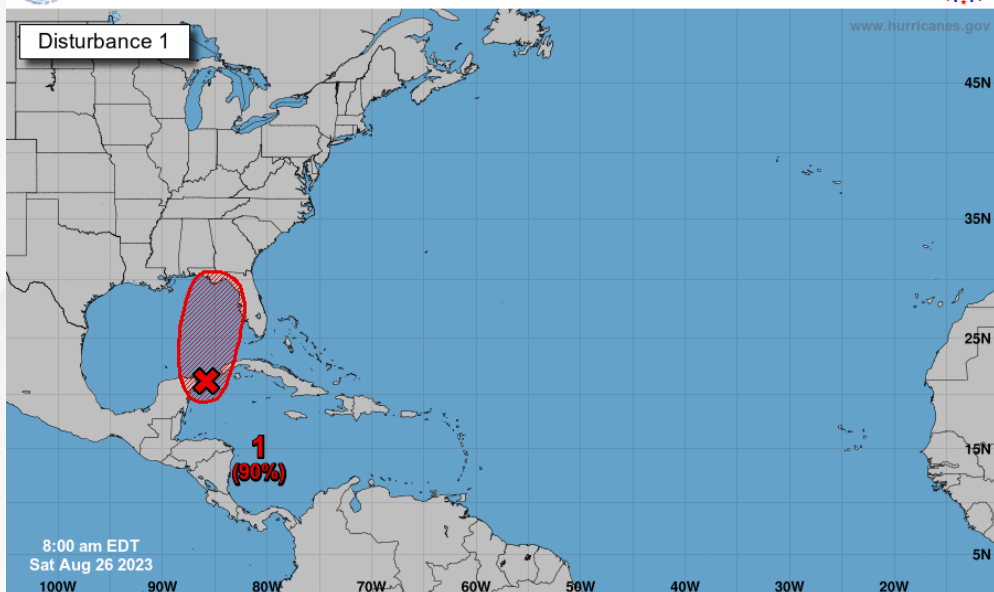
Tropical Weather Outlook

Disturbance 1 – Invest 93L ([LINK](#))

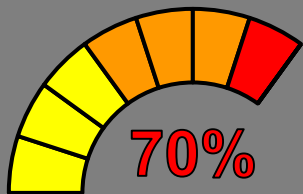


Seven-Day Graphical Tropical Weather Outlook

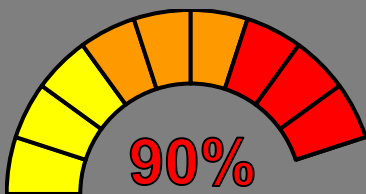
National Hurricane Center Miami, Florida



Current Disturbances and Seven-Day Cyclone Formation Chance: < 40% 40-60% > 60%
Tropical or Sub-Tropical Cyclone: Depression Storm Hurricane
 Post-Tropical Cyclone or Remnants



48 Hour Formation



7 Day Formation

Shower and thunderstorm activity continues to show signs of organization in association with an area of low pressure located near the Yucatan Channel. Environmental conditions appear conducive for further development of this system, and a tropical depression is likely to form within the next day or two while it moves generally northward over the southeastern Gulf of Mexico. Interests in the Yucatan Peninsula of Mexico, western Cuba, and Florida should monitor the progress of this system.

This system should be monitored as it moves into the southern Gulf of Mexico early next week. While it is still too early to discuss the timing, location, and intensity of specific impacts, increasing rain chances and breezy conditions could arrive along the Florida Gulf Coast as early as Tuesday.

* Formation chance through 48 hours... **high...70%.**

* Formation chance through 7 days...**high...90%.**

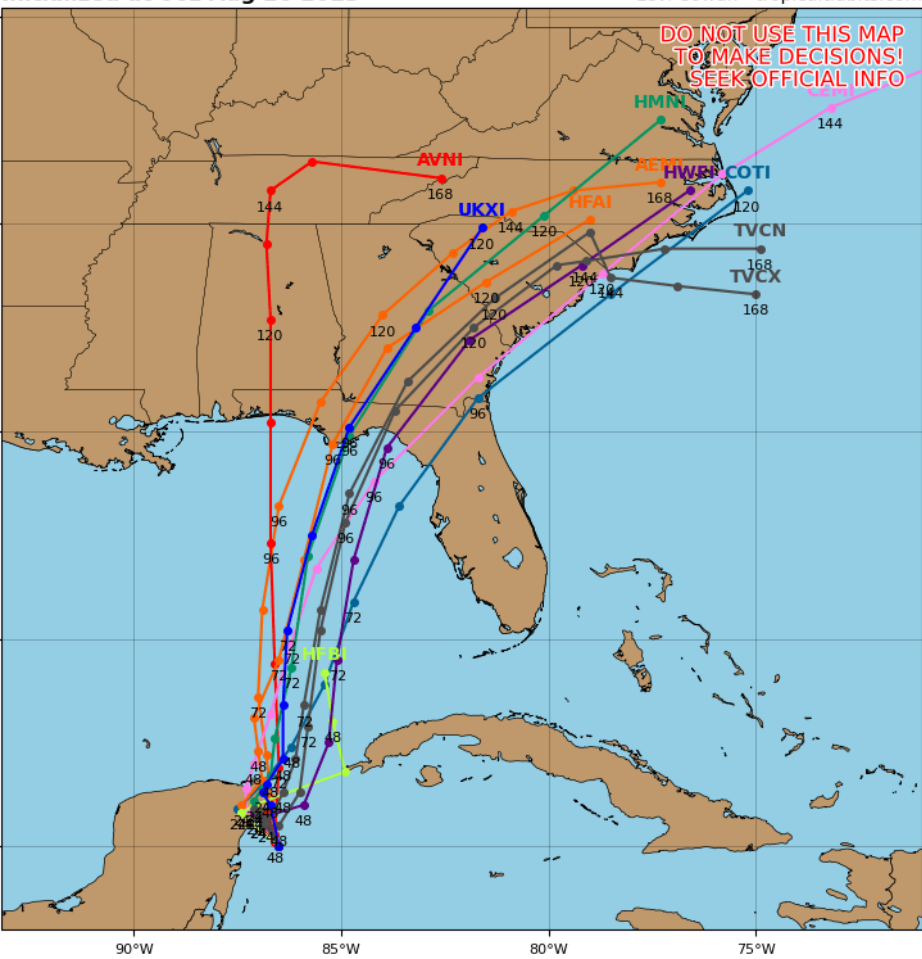


Model Forecasts – Next 5 Days

Invest 93L

Invest 93L Model Track Guidance

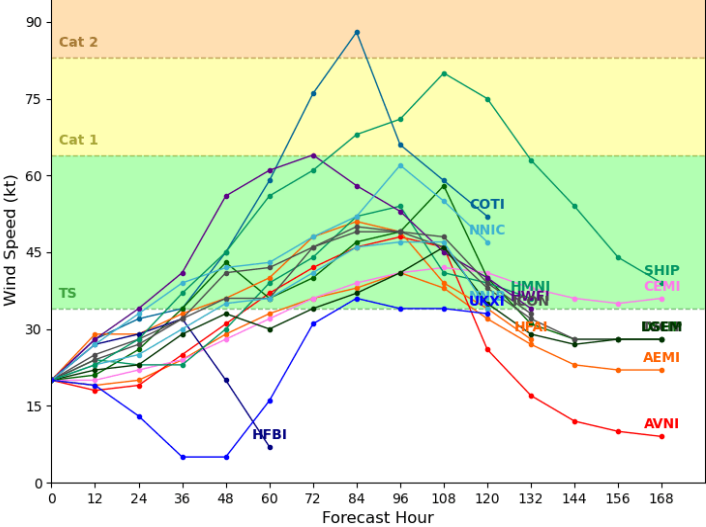
Initialized at 06z Aug 26 2023 Levi Cowan - tropicaltidbits.com



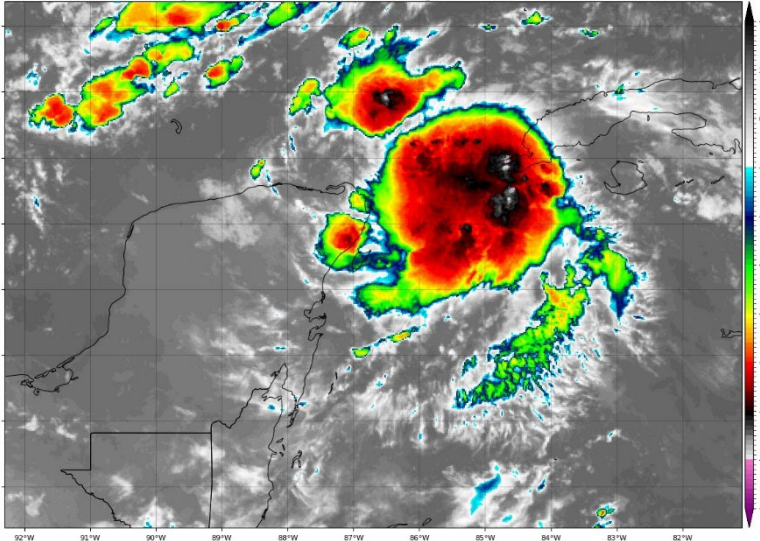
Shower and thunderstorm activity around 93L continues to show signs of organization. Computer models are in better agreement on forecast track, bringing 93L into the southern Gulf of Mexico by Monday, followed by a north-northeast acceleration towards the Florida Big Bend or eastern Panhandle coast by Wednesday morning. There is still some disagreement on forecast strength, but nearly all of the models expect strengthening into a tropical storm within the next 72 hours and continued strengthening up until landfall.

Invest 93L Model Intensity Guidance

Initialized at 06z Aug 26 2023 Levi Cowan - tropicaltidbits.com



GOES-16 Channel 13 (IR) Brightness Temperature (°C) at 11:22Z Aug 26, 2023 TROPICALTIDBITS.COM





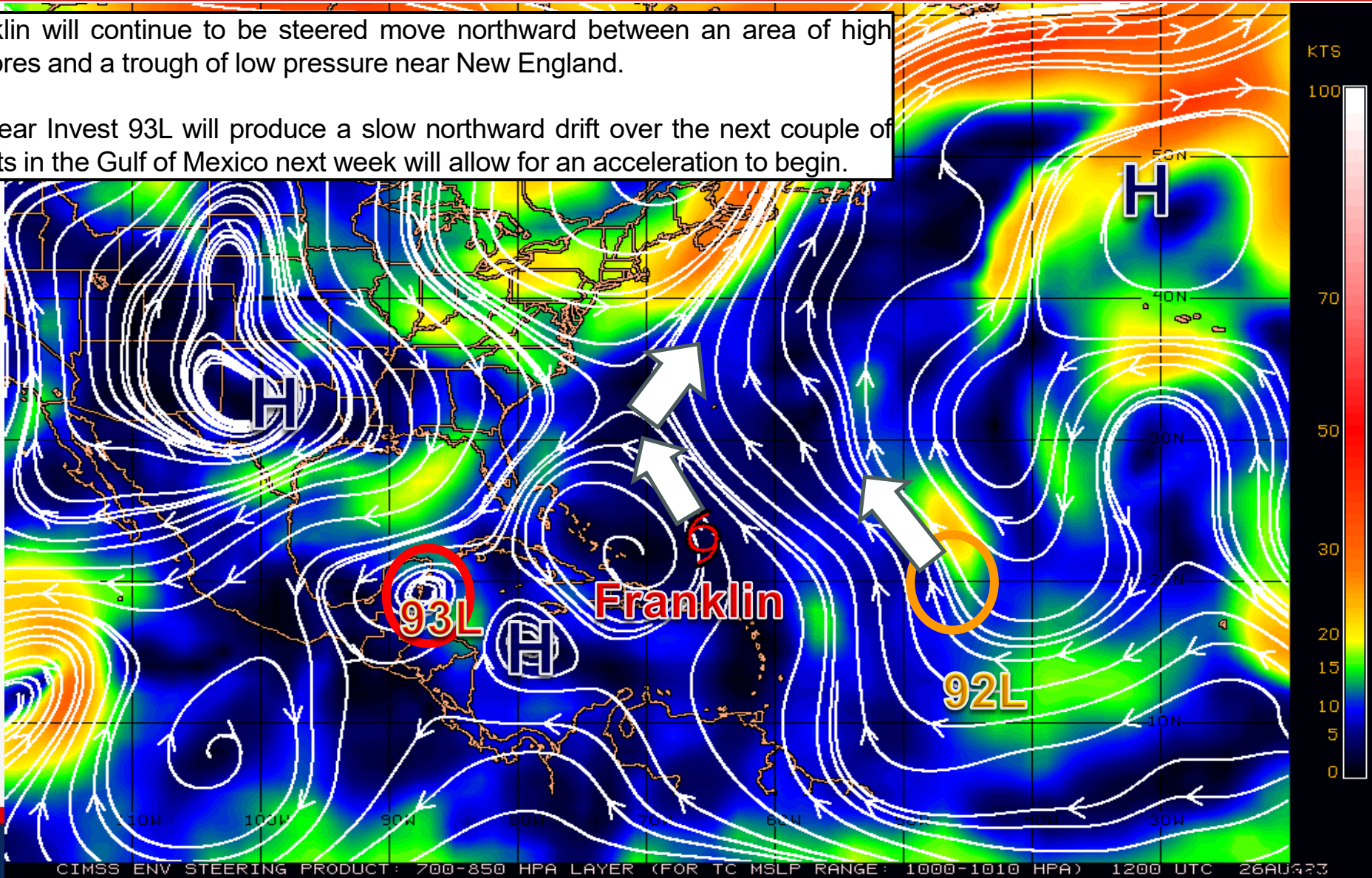
Steering Currents

What is Moving the System?

Color denotes the movement speed through the atmosphere and thin white lines denote direction. Tightly clustered white lines represent faster movement as well.

Invest 92L and Franklin will continue to be steered move northward between an area of high pressure near the Azores and a trough of low pressure near New England.

Weak steering flow near Invest 93L will produce a slow northward drift over the next couple of days. Steering currents in the Gulf of Mexico next week will allow for an acceleration to begin.



Fast Moving Storm

Fast Moving Storm

Typical Moving Storm

Slow Moving Storm

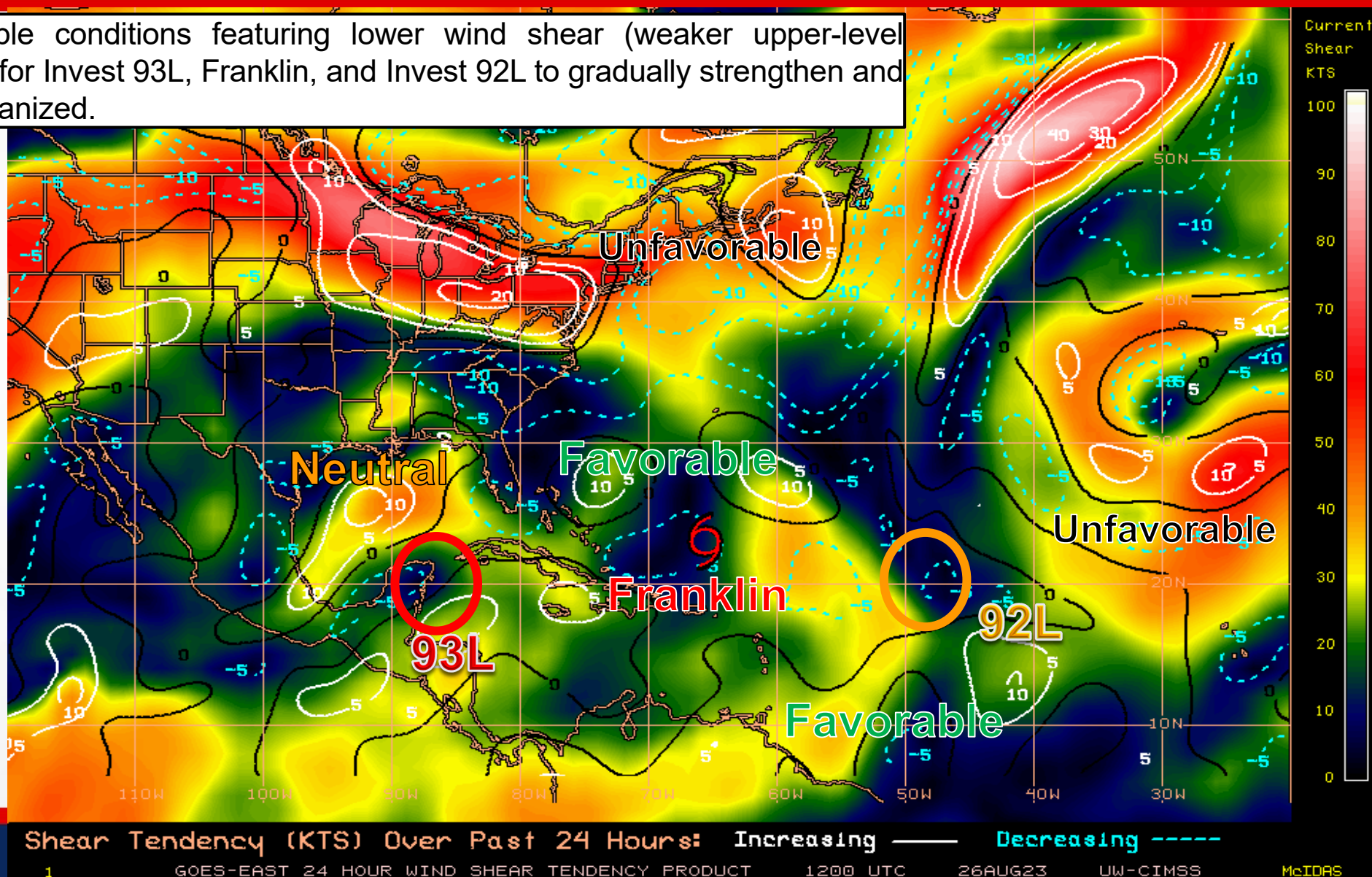


Wind Shear

Is the environment favorable for the system?

Color denotes the amount of wind shear and the lines denote how it have changed over the last 24 hours (dotted lines show decreasing shear and solid lines show increasing).

Generally favorable conditions featuring lower wind shear (weaker upper-level winds) may allow for Invest 93L, Franklin, and Invest 92L to gradually strengthen and become more organized.



HIGH Shear
(Unfavorable)

HIGH Shear
(Unfavorable)

MODERATE
Shear
(Neutral)

LOW Shear
(Favorable)

Shear Tendency (KTS) Over Past 24 Hours: Increasing ——— Decreasing - - - -

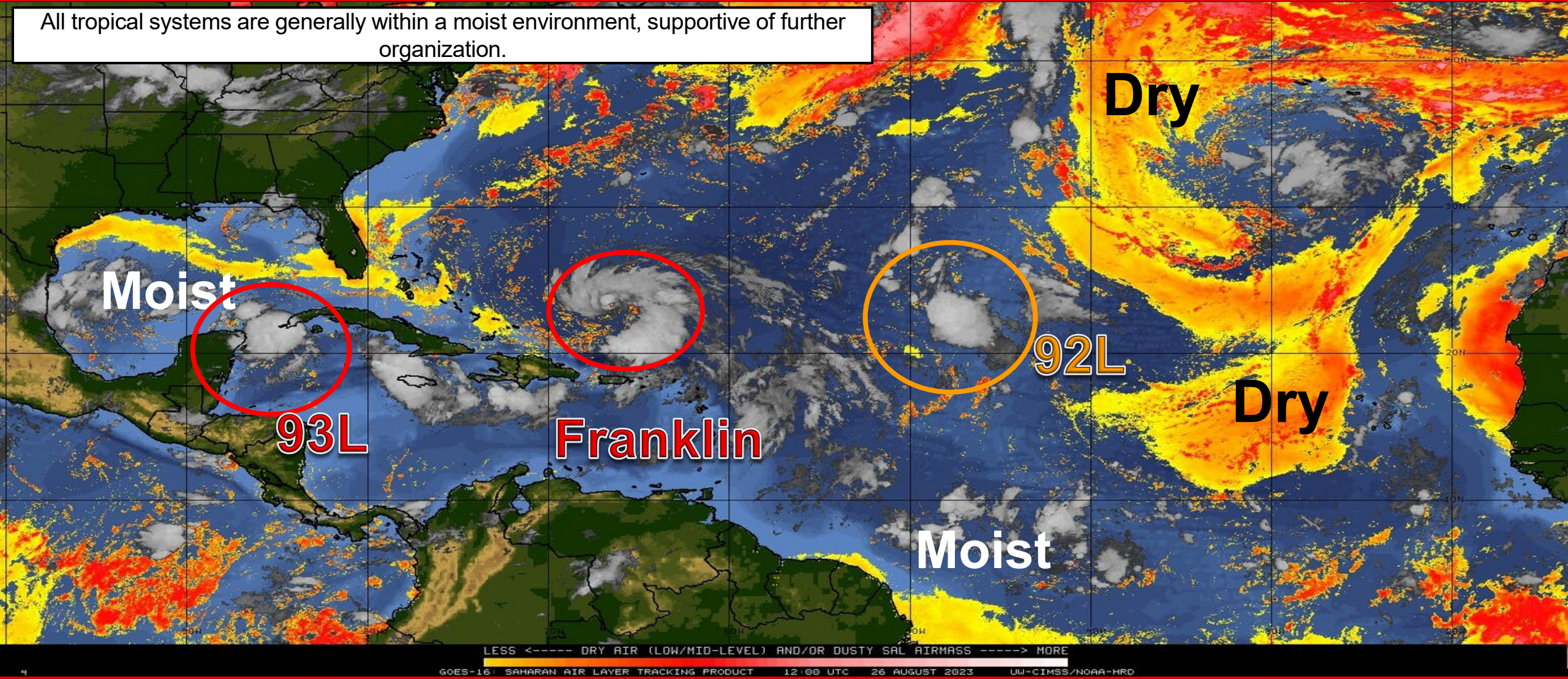


Dry Air & Saharan Dust

Is the environment favorable for the system?

Color denotes concentration of Saharan Dust or dry, stable air.

All tropical systems are generally within a moist environment, supportive of further organization.

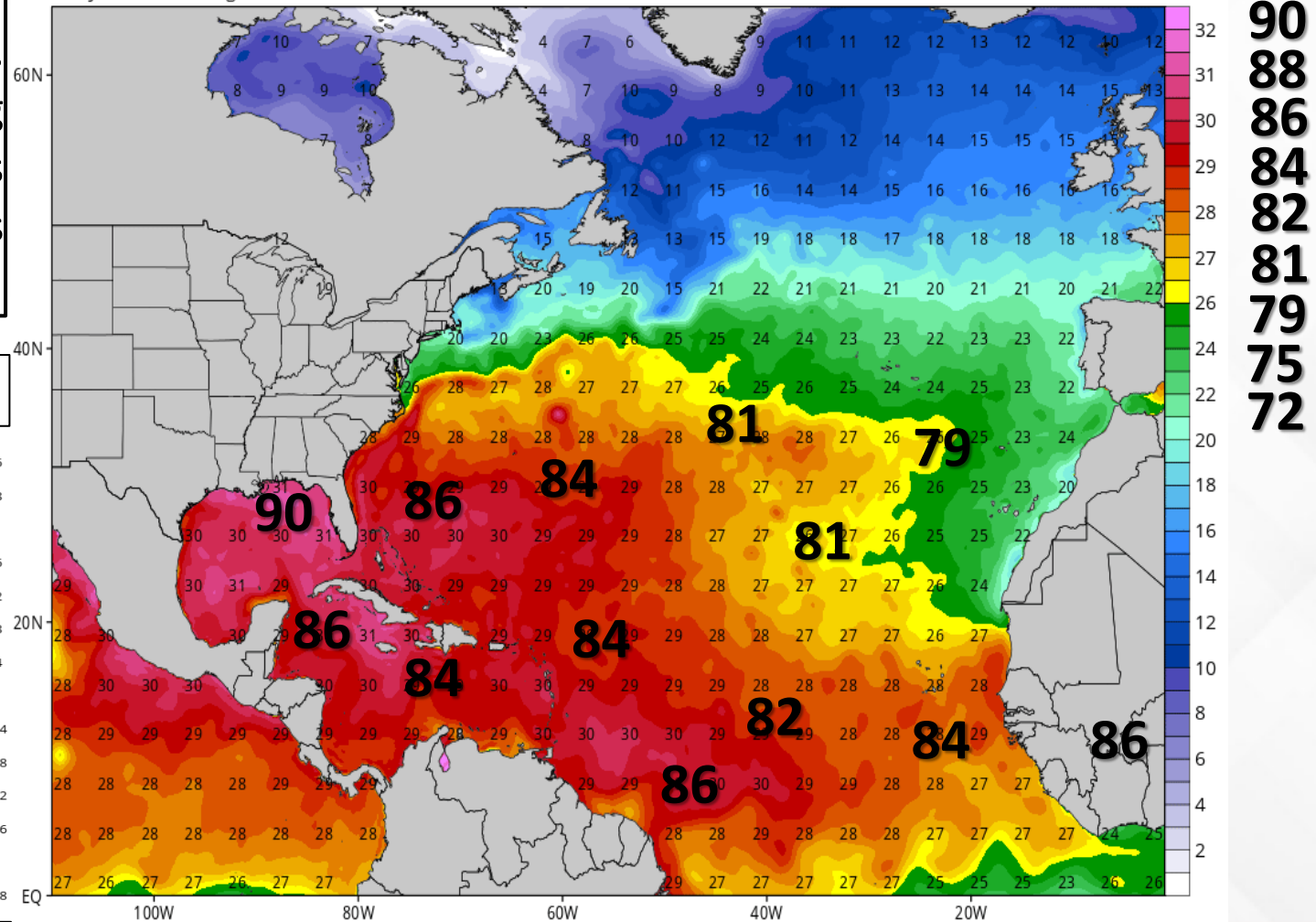




CDAS Sea Surface Temperature (°C)

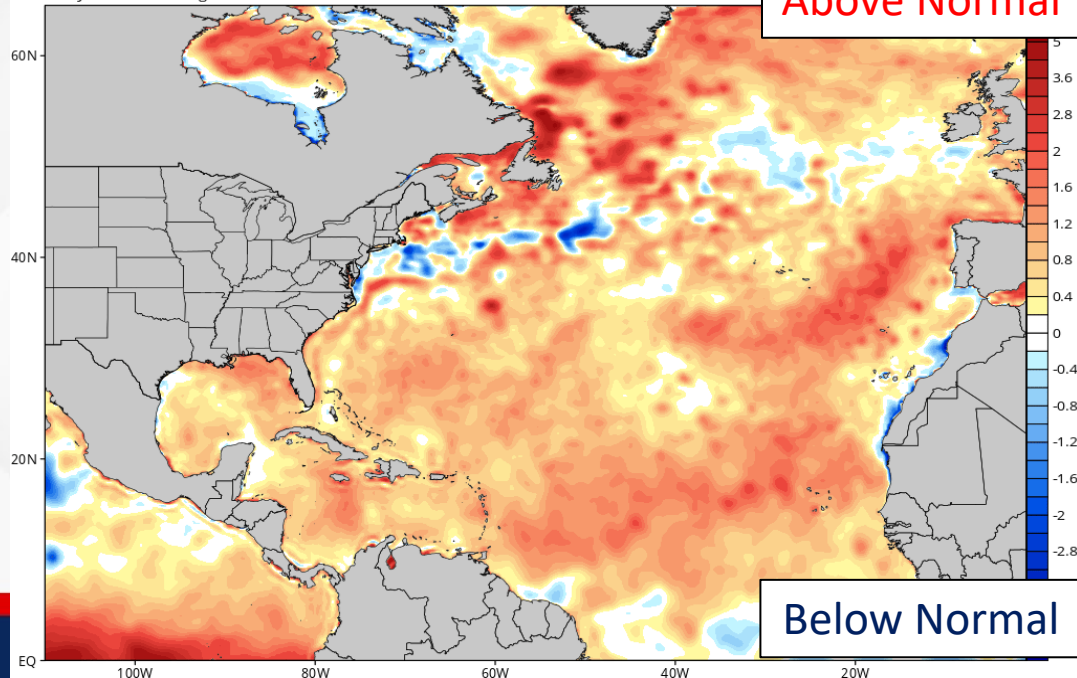
Analysis Time: 06z Aug 26 2023

TROPICALTIDBITS.COM



CDAS Sea Surface Temperature Anomaly (°C) (based on CFSR 1981-2010 Climatology)

Analysis Time: 06z Aug 26 2023





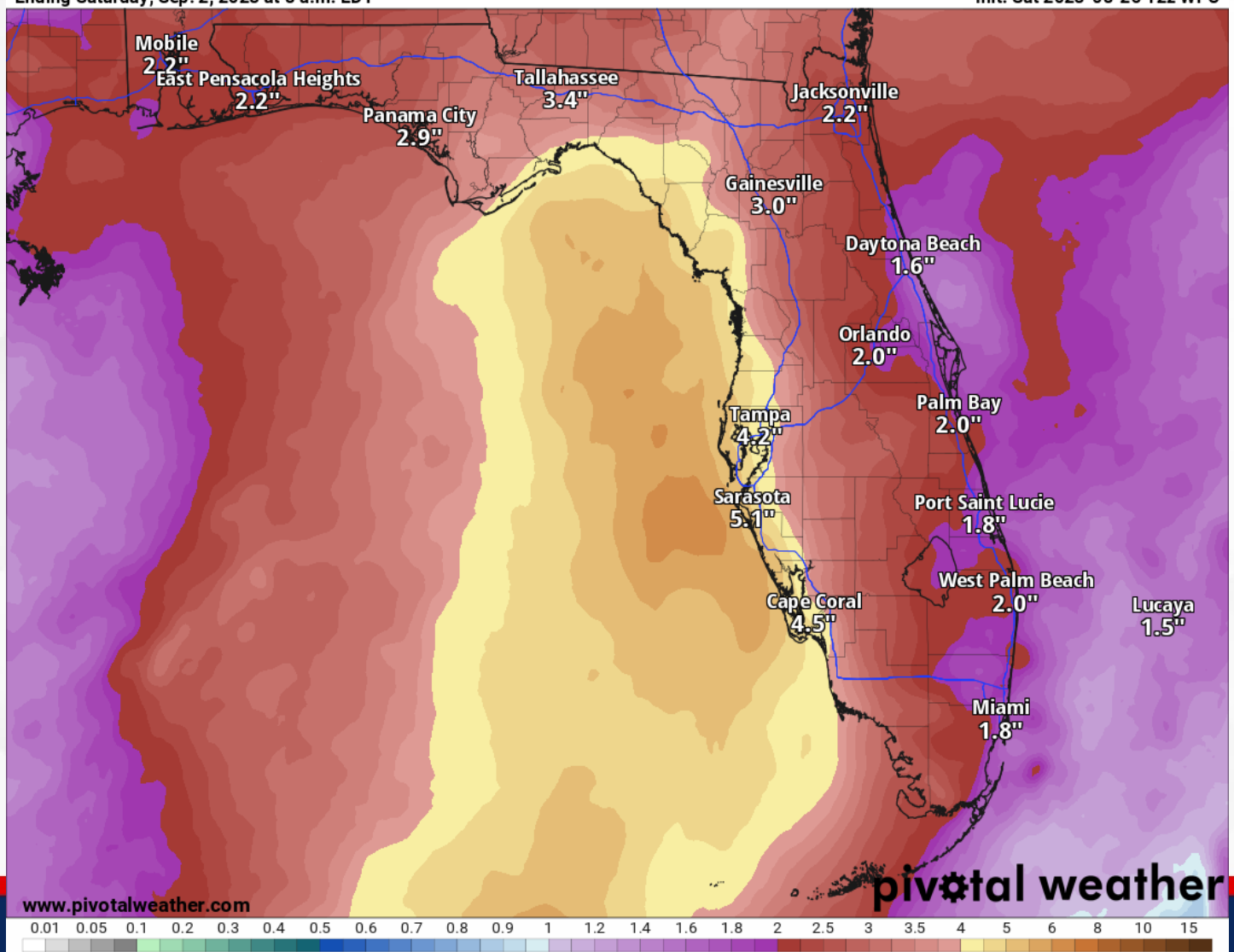
7-Day Forecast Rainfall

From the National Weather Service & Weather Prediction Center

7-Day Precipitation (in)

Ending Saturday, Sep. 2, 2023 at 8 a.m. EDT

Init: Sat 2023-08-26 12z WPC



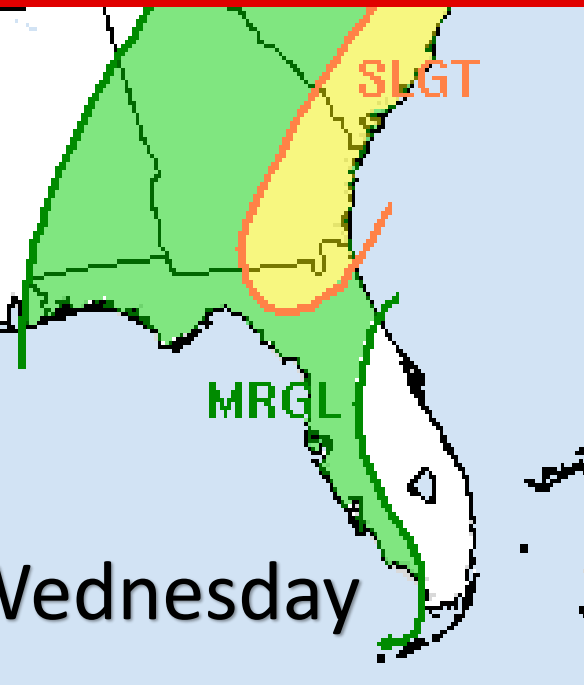
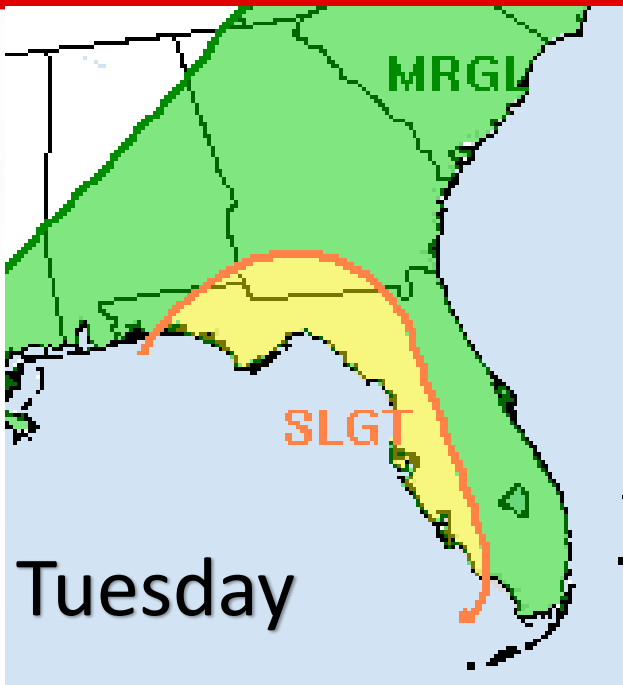
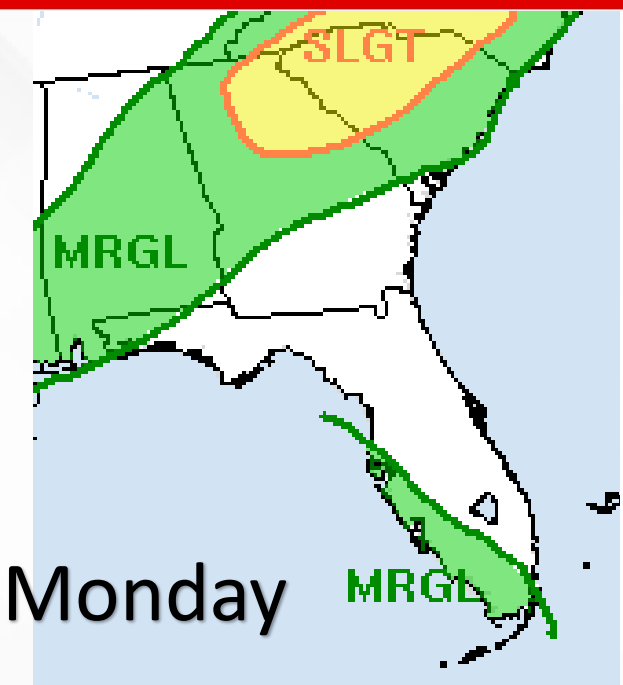
Exact rainfall amounts will be track-dependent, but there is the potential for heavy rainfall amounts of 3-6", with the higher amounts to the right of the track of the system. Isolated locations could receive up to 10" of rain from this system, with coastal portions of the Florida West Coast and Big Bend being the most at risk for these higher amounts.



Flash Flood Outlook – Mon, Tue, Wed

From the Weather Prediction Center

MARGINAL (MRGL)	SLIGHT (SLGT)
Isolated flash floods possible	Scattered flash floods possible
Localized and primarily affecting places that can experience rapid runoff with heavy rainfall.	Mainly localized. Most vulnerable are urban areas, roads, small streams and washes. Isolated significant flash floods possible.



The Weather Prediction Center (WPC) is forecasting a **Marginal Risk (level 1 of 4) for Flash Flooding** across Southwest Florida on Monday as some of the moisture associated with 93L is pushed into the area. There is also a **Marginal Risk** of flash flooding in the western Panhandle associated with a slow-moving cold front.

On Tuesday and Wednesday, the risk for intense downpours leading to instances of **flash flooding** increases for much of the state as 93L moves across the region. The area most at risk will be the eastern Florida Panhandle, Florida Big Bend, Suwannee Valley, as well as portions of Northeast and West-Central Florida, where a **Slight Risk (level 2 of 4)** is forecast.



Elevated Rip Current Risk

Panhandle & East Coast Beaches

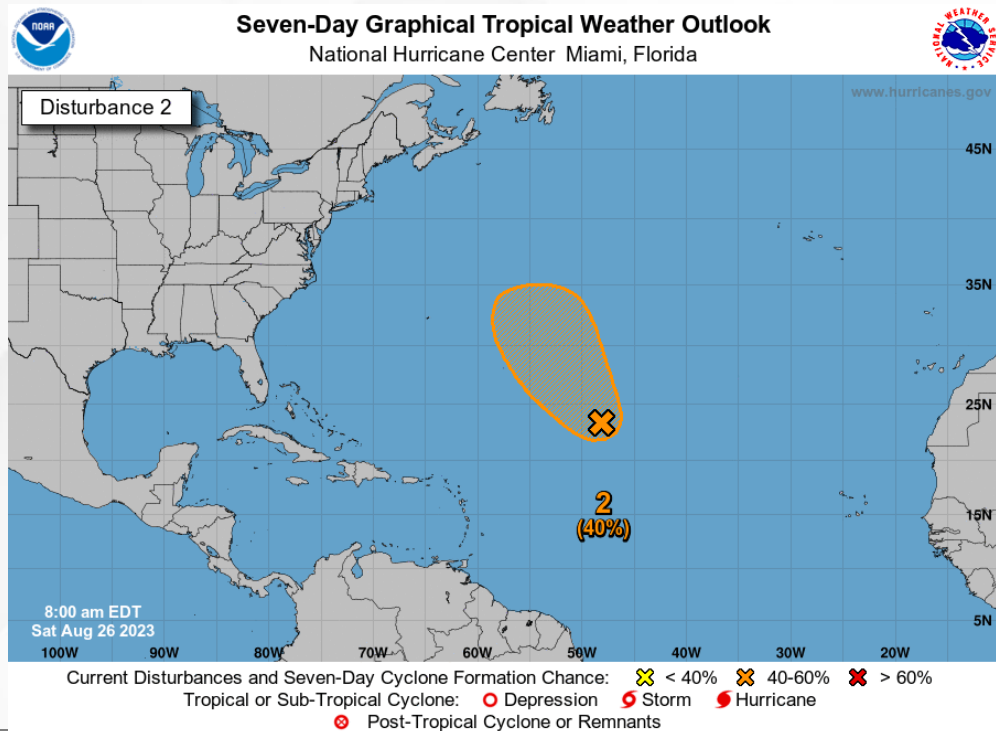


Easterly to east-northeasterly flow will maintain a **moderate to high risk of rip currents** along all Atlantic Coast beaches today, along with breaking wave heights of 2-4'. A **moderate risk of rip currents** is expected at many Florida Panhandle beaches during the afternoon.



Tropical Weather Outlook

Disturbance 2 – Invest 92L ([LINK](#))



Disorganized showers and thunderstorms continue in association with a broad area of low pressure located about 1000 miles east-northeast of the northern Leeward Islands. Environmental conditions could become more conducive for development over the next few days, and a tropical depression could form early next week while the system moves generally northwestward over the central subtropical Atlantic.

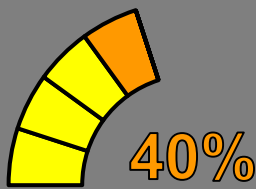
This system poses no threat to Florida.

* Formation chance through 48 hours...**low...20%**.

* Formation chance through 7 days...**medium...40%**.



48 Hour Formation

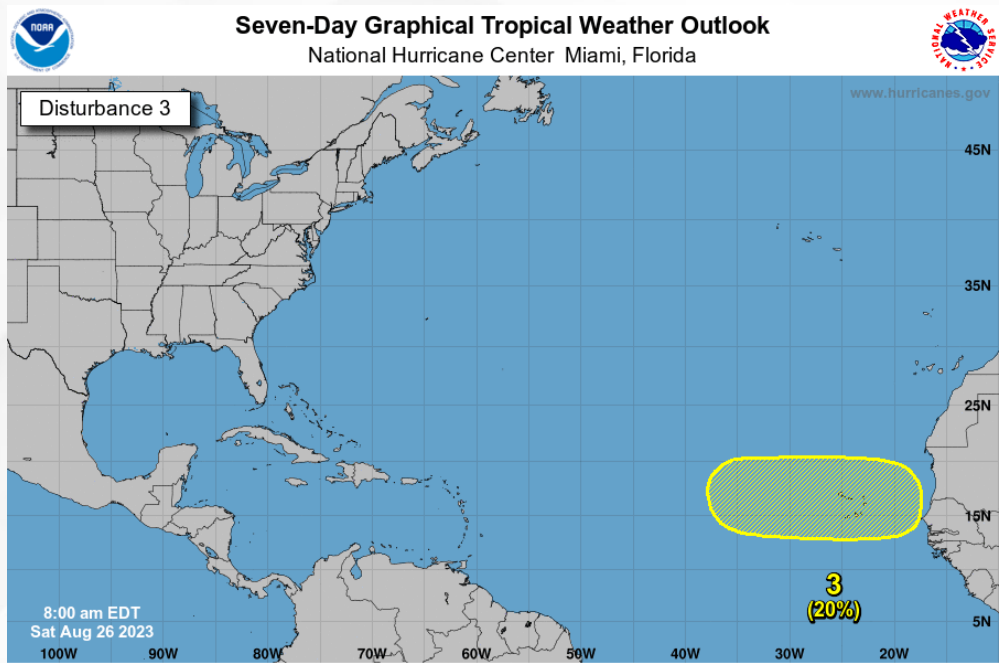


7 Day Formation



Tropical Weather Outlook

Disturbance 3 – ([LINK](#))



Current Disturbances and Seven-Day Cyclone Formation Chance: ✕ < 40% ✕ 40-60% ✕ > 60%
Tropical or Sub-Tropical Cyclone: ○ Depression ○ Storm ○ Hurricane
○ Post-Tropical Cyclone or Remnants

0%

48 Hour Formation

20%

7 Day Formation

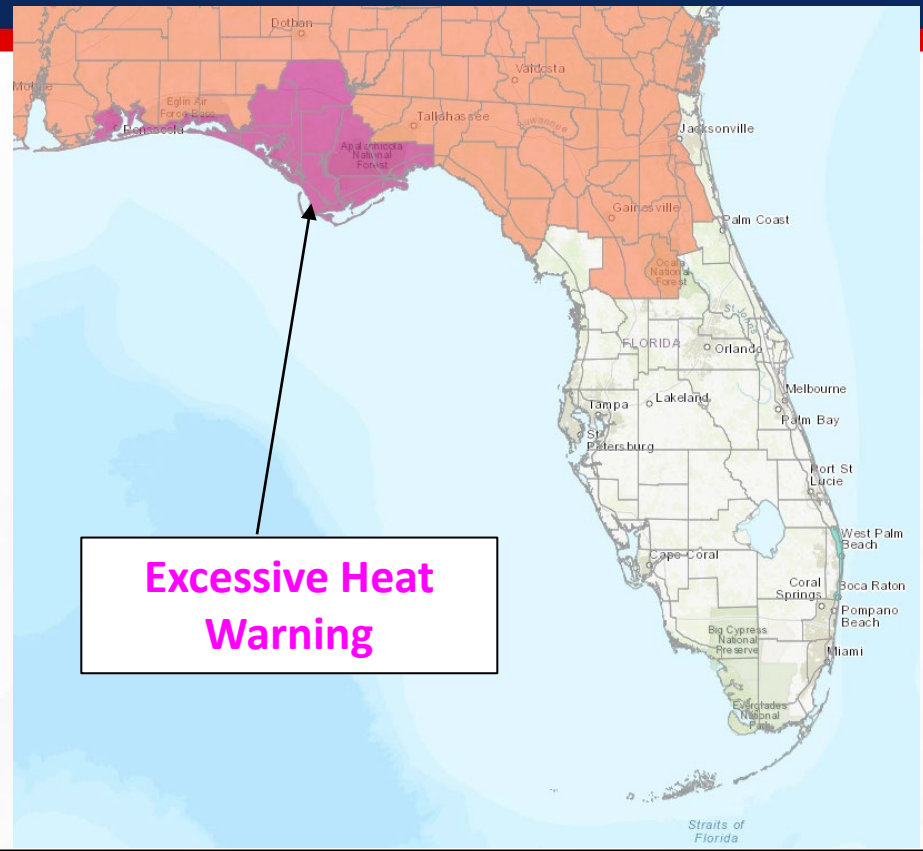
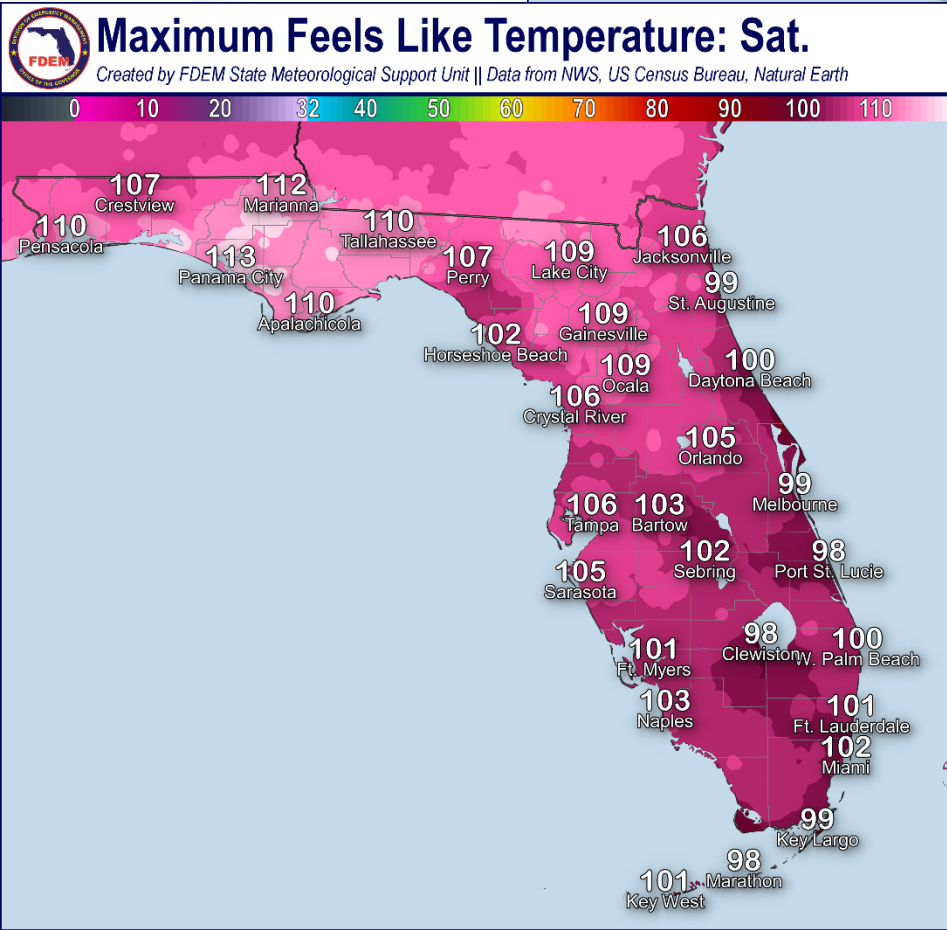
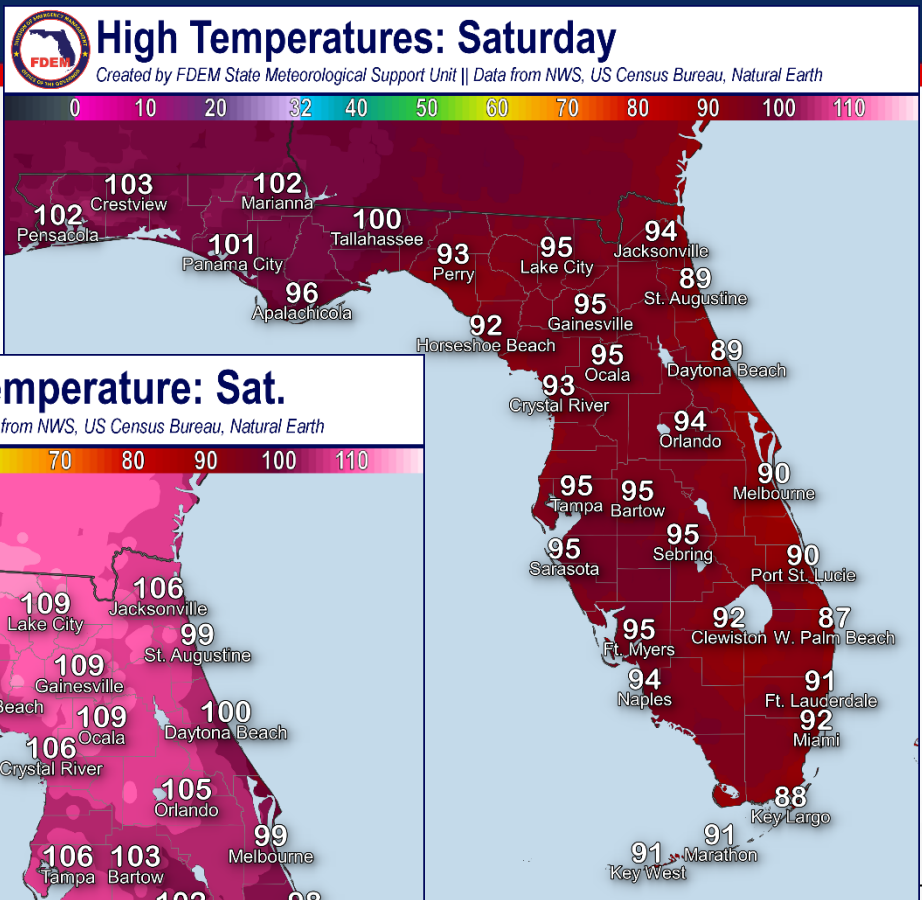
A tropical wave is forecast to move off the west coast of Africa early next week. Some slow development of this system is possible during the latter part of next week while the system moves westward across the eastern tropical Atlantic.

- * Formation chance through 48 hours...low...near 0%.
- * Formation chance through 7 days...low...20%.



Forecast High Temperatures & Heat Indices

Today



Dangerously hot and humid conditions can be expected across the state as hot temperatures will reach the low to middle 90s across the state and approach the upper 90s across the Peninsula and 100-105 across the Panhandle. Triple digit heat indices can be expected to continue, reaching values of 100-110. An **Excessive Heat Warning** is in place across the Panhandle and western Big Bend as **heat indices upwards of 115** can be expected this afternoon. **Heat Advisories** continue across the rest of North Florida as **heat indices of 105-110 can be expected**.



Summary

Tropical Storm Franklin:

- As of 5:00 AM EDT Saturday, Tropical Storm Franklin was located about 350 miles east-northeast of Grand Turk Island and about 660 miles south of Bermuda and is moving east-northeast at 6 mph.
- A northward or north-northwestward motion over the western Atlantic can be expected to continue through early next week.
- Maximum sustained winds have increased to near 65 mph, and strengthening into a hurricane is forecast to occur within the next 24 hours. Franklin could become the first major hurricane of the season early next week.
- *Franklin poses no direct threat to Florida; however, and elevated risk of rip currents and increased heights of breakers in the surf zone will be possible along Atlantic Coast beaches.*

Invest 93L:

- Shower and thunderstorm activity continues to show signs of organization in association with an area of low pressure located near the Yucatan Channel.
- Environmental conditions appear conducive for further development over the next several days, and a tropical depression is likely to form this weekend as it moves generally northward into the eastern Gulf of Mexico.
- Computer models indicate that this system will intensify as it moves across the eastern Gulf of Mexico, becoming Tropical Storm Idalia within the next 48-72 hours.

Invest 92L:

- Disorganized showers and thunderstorms continue in association with an area of low pressure located about midway between the Cabo Verde Islands and the northern Leeward Islands.
- Environmental conditions may become more conducive for development over the weekend, and a tropical depression could form by early next week.
- There is a low (20%) chance of development over the next 48 hours, and a medium (40%) chance of development over the next 7 days.
- *Invest 92L poses no threat to Florida.*

Eastern Tropical Atlantic:

- A tropical wave is forecast to move off the west coast of Africa early next week.
- Some slow development is possible late next week as the system moves westward across the Tropical Atlantic.
- There is a low (near 0%) chance of development over the next 48 hours and a low (20%) chance of development over the next 7 days.
- *This system poses no direct threat to Florida over the next 5-7 days, at least.*

Florida Outlook:

- Hot and humid conditions persist across the Sunshine State, with Heat Advisories and Excessive Heat Warnings in effect for much of North Florida this afternoon.
- Tropical moisture and scattered thunderstorms are possible along portions of Southwest Florida as early as Monday, with greater impacts to Florida expected on Tuesday and Wednesday.
- While it is too early to determine wind and severe weather impacts, gusty winds and isolated tornadoes will be possible as the storm approached the Florida Gulf Coast.
- Rainfall amounts will be dependent on the forecast strength and track of 93L, but forecasts indicate the potential for 3-6" of rain with isolated amounts of 10" possible along the Florida West Coast and Florida Big Bend as the system moves into the area, leading to the potential for flash flooding concerns.
- The potential for coastal flooding and storm surge will be evaluated over the next 2-3 days.

The next briefing package will be issued on Sunday. For the latest information, please visit the [National Hurricane Center website](#).



Tropical Update



Created by:

Amy Godsey, Chief State Meteorologist

Amy.Godsey@em.myflorida.com

State Meteorological Support Unit

Florida Division of Emergency Management

Users wishing to subscribe (approval pending) to this distribution list, register at:

https://public.govdelivery.com/accounts/FLDEM/subscriber/new?topic_id=SERT_Met_Tropics.

Other reports available for subscription are available at:

<https://public.govdelivery.com/accounts/FLDEM/subscriber/new?preferences=true>