



Tropical Update



10:30 AM EDT

Friday, August 25, 2023

Tropical Storm Franklin, Northwestern Caribbean Low (70%), Invest 92L (50%), and Remnants of Emily (20%)

This update is intended for government and emergency response officials, and is provided for informational and situational awareness purposes only. Forecast conditions are subject to change based on a variety of environmental factors. For additional information, or for any life safety concerns with an active weather event please contact your County Emergency Management or Public Safety Office, local National Weather Service forecast office, or visit the National Hurricane Center website at www.hurricanes.gov.



Atlantic Basin Satellite Image

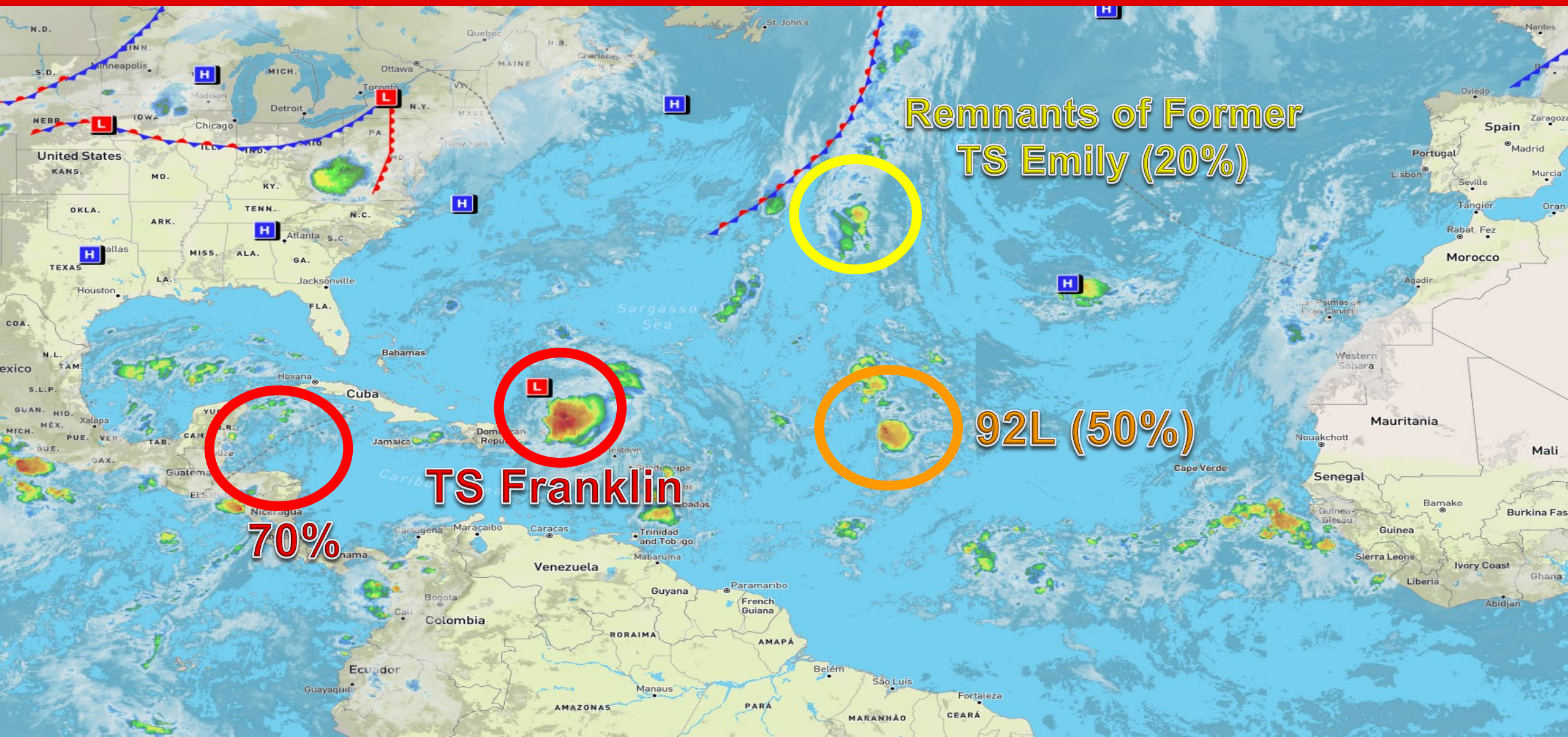
Chance of development:

None

Low

Medium

High



Remnants of Former
TS Emily (20%)

92L (50%)

TS Franklin

70%



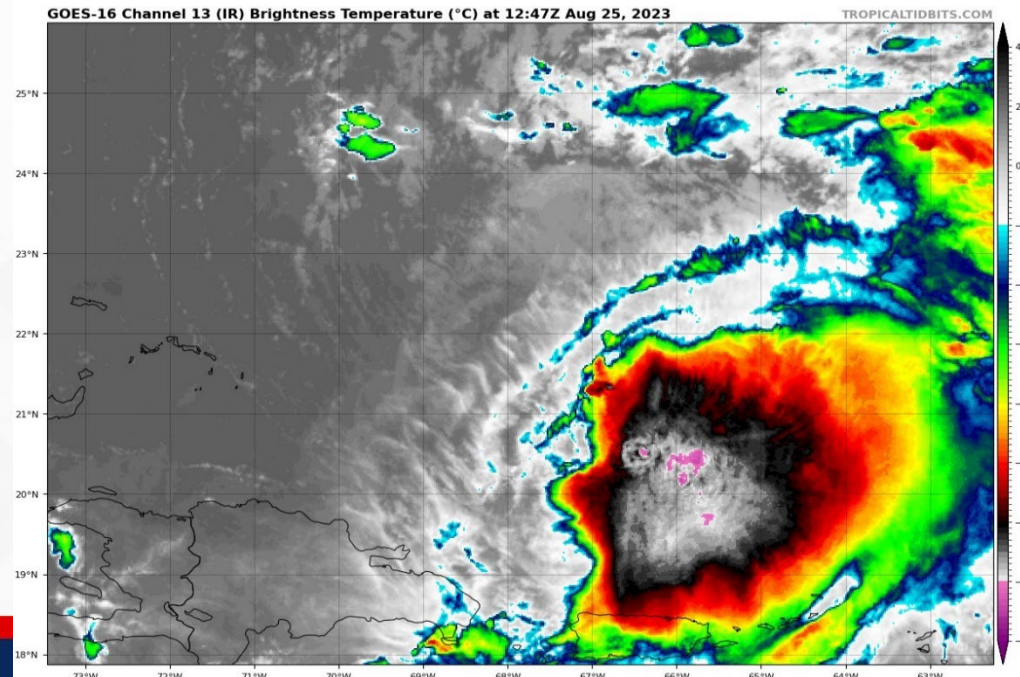
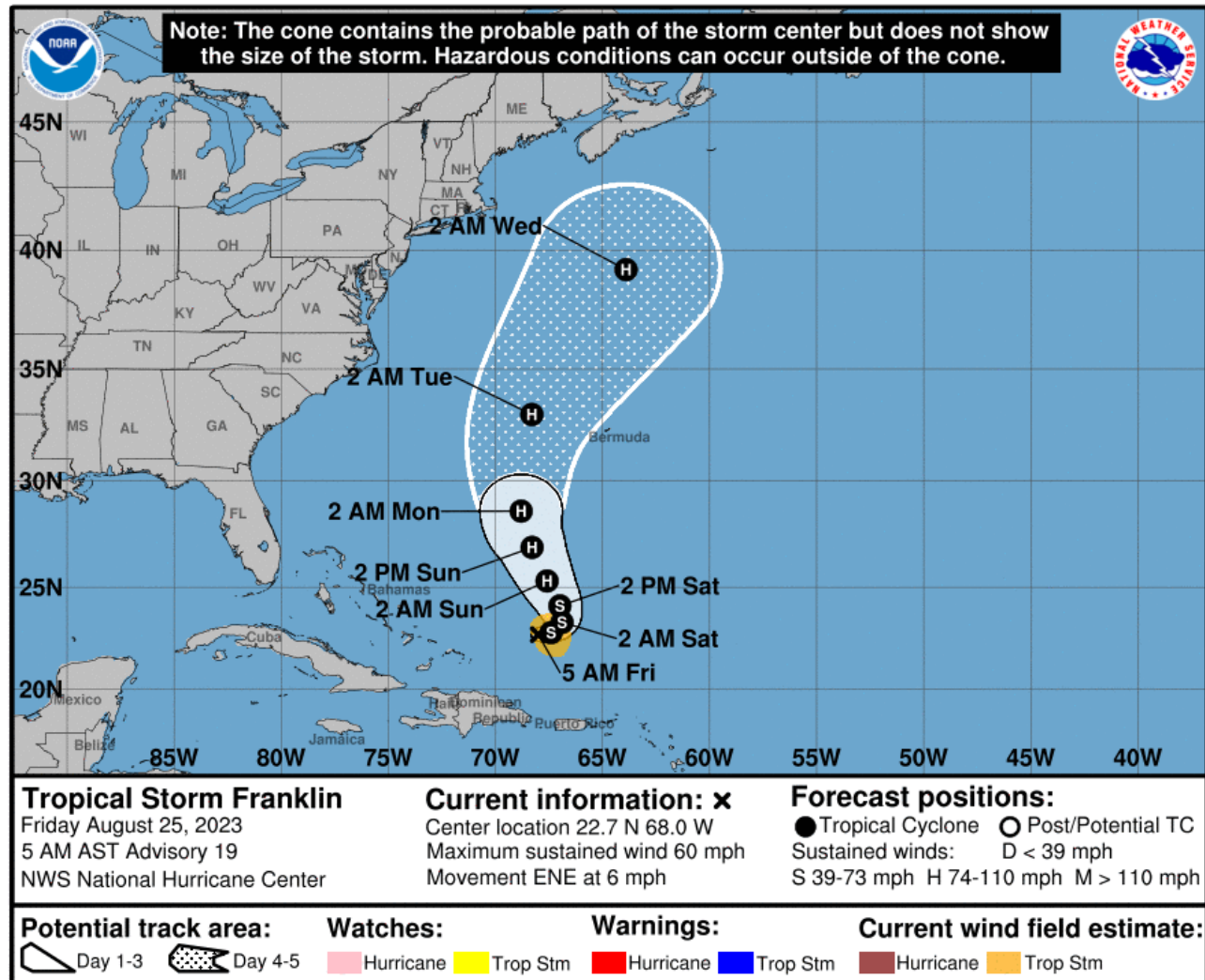
Forecast Cone

Tropical Storm Franklin ([LINK](#))

- **Location:** 215 miles ENE of Grand Turk Island
- **Maximum Sustained Winds:** 60 mph
- **Current Movement:** ENE at 6 mph
- **FL Watches/Warnings:** None

This east-northeastward motion is expected to continue today, with a sharp turn toward the north expected tonight and Saturday. A northward or north-northwestward motion over the western Atlantic can be expected to continue through early next week. Gradual strengthening is forecast, and Franklin will likely become a hurricane over the weekend.

Franklin poses no direct threat to Florida; however, and elevated risk of rip currents and increased heights of breakers in the surf zone will be possible along Atlantic Coast beaches.



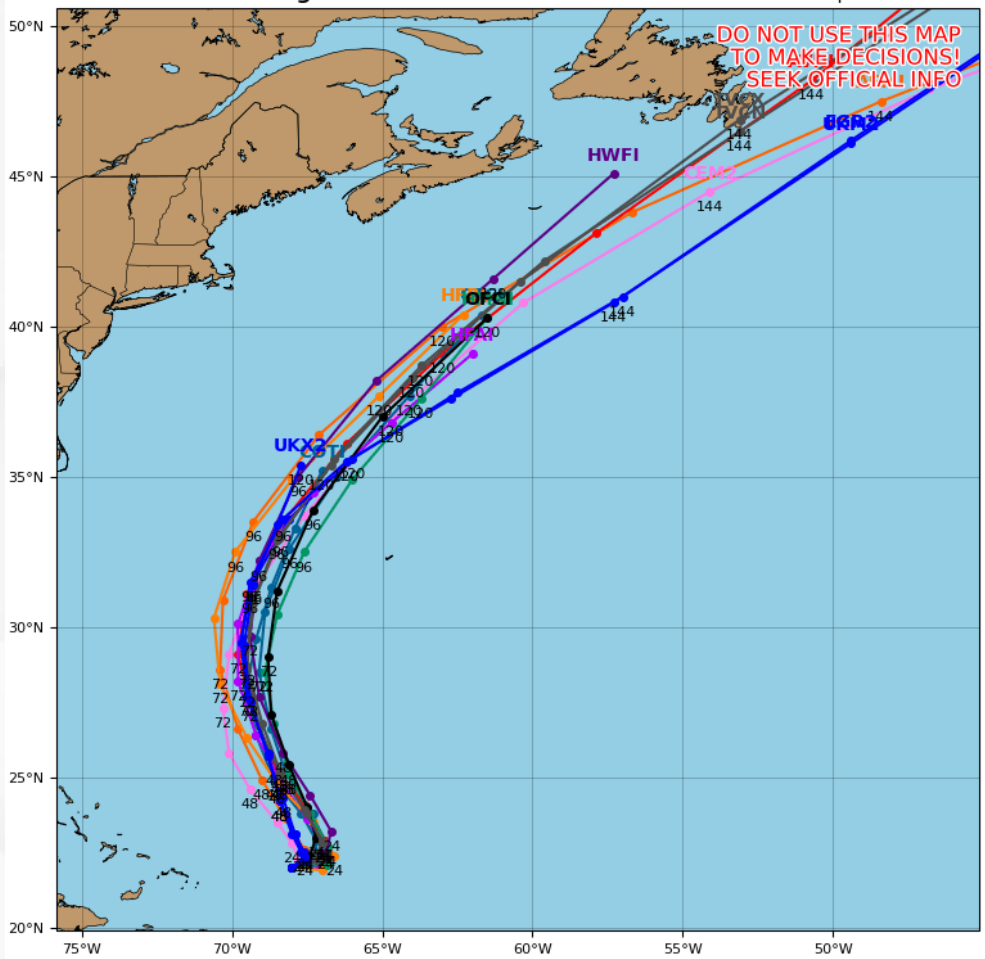


Model Forecasts – Next 5 Days

Tropical Storm Franklin

Tropical Storm FRANKLIN Model Track Guidance

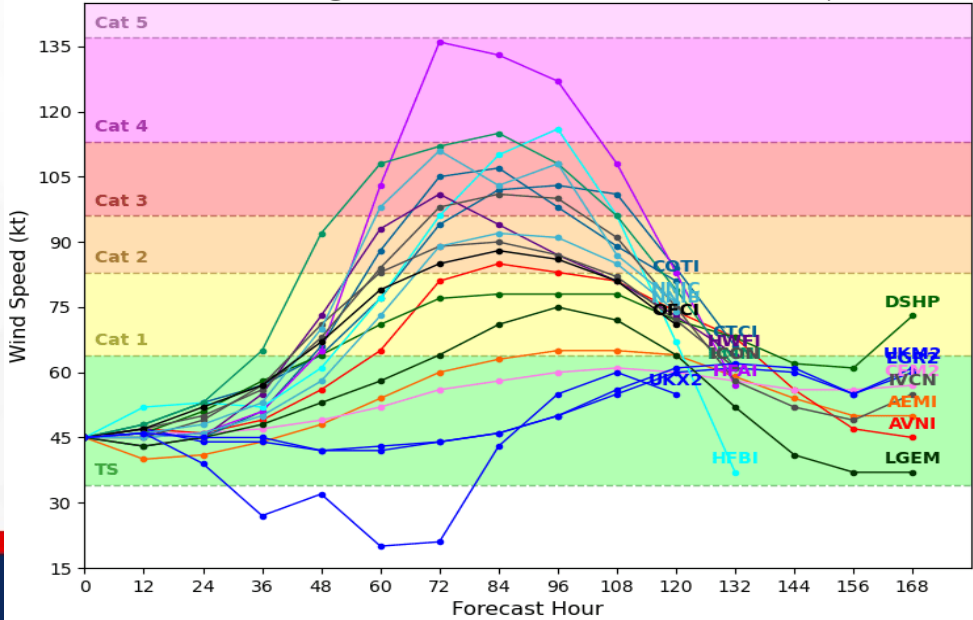
Initialized at 12z Aug 25 2023 Levi Cowan - tropicaltidbits.com



Computer models remain in very good agreement that Franklin will move north-northwestward over the western Atlantic this weekend, recurving northeastward and accelerating in the open waters by the middle of next week. Computer models agree that moderate upper-level winds will limit strengthening during the next 12-24 hours, with Franklin becoming a hurricane as early as Saturday night or Sunday morning. While there is disagreement regarding the extent of strengthening, this system should reach near major hurricane (Category 3) strength early next week.

Tropical Storm FRANKLIN Model Intensity Guidance

Initialized at 12z Aug 25 2023 Levi Cowan - tropicaltidbits.com





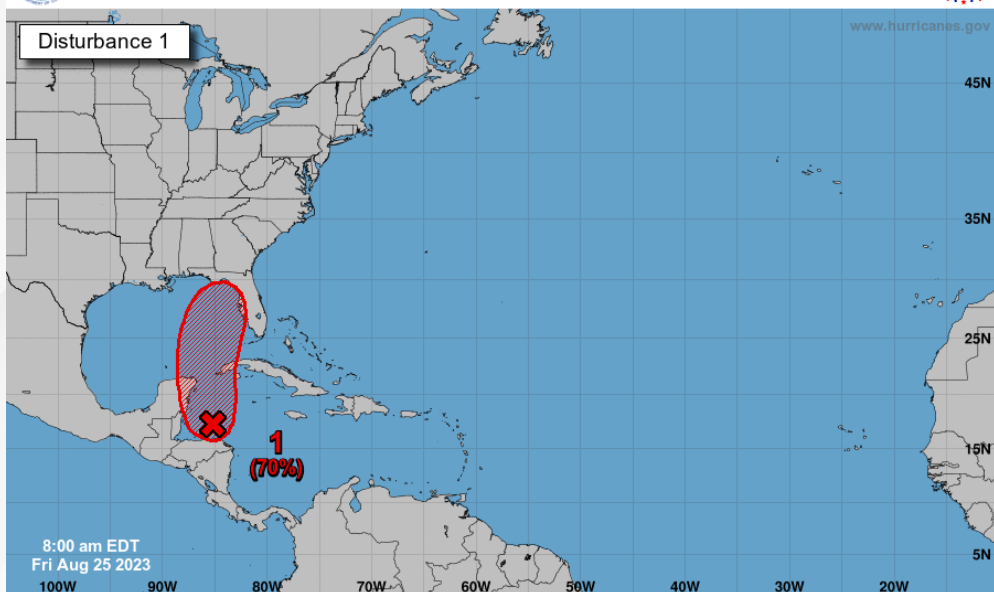
Tropical Weather Outlook

Disturbance 1 – Northwestern Caribbean Low ([LINK](#))

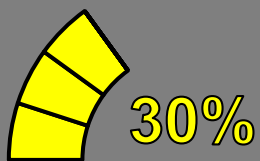


Seven-Day Graphical Tropical Weather Outlook

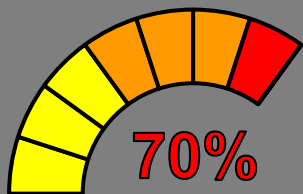
National Hurricane Center Miami, Florida



Current Disturbances and Seven-Day Cyclone Formation Chance: ✕ < 40% ✖ 40-60% ✖ > 60%
Tropical or Sub-Tropical Cyclone: ○ Depression ○ Storm ○ Hurricane
○ Post-Tropical Cyclone or Remnants



48 Hour Formation



5 Day Formation

A broad area of low pressure over the northwestern Caribbean Sea is producing disorganized showers and thunderstorms. Environmental conditions appear conducive for gradual development of this system during the next several days, and a tropical depression is likely to form late this weekend or early next week while moving generally northward over the northwestern Caribbean Sea and eastern Gulf of Mexico.

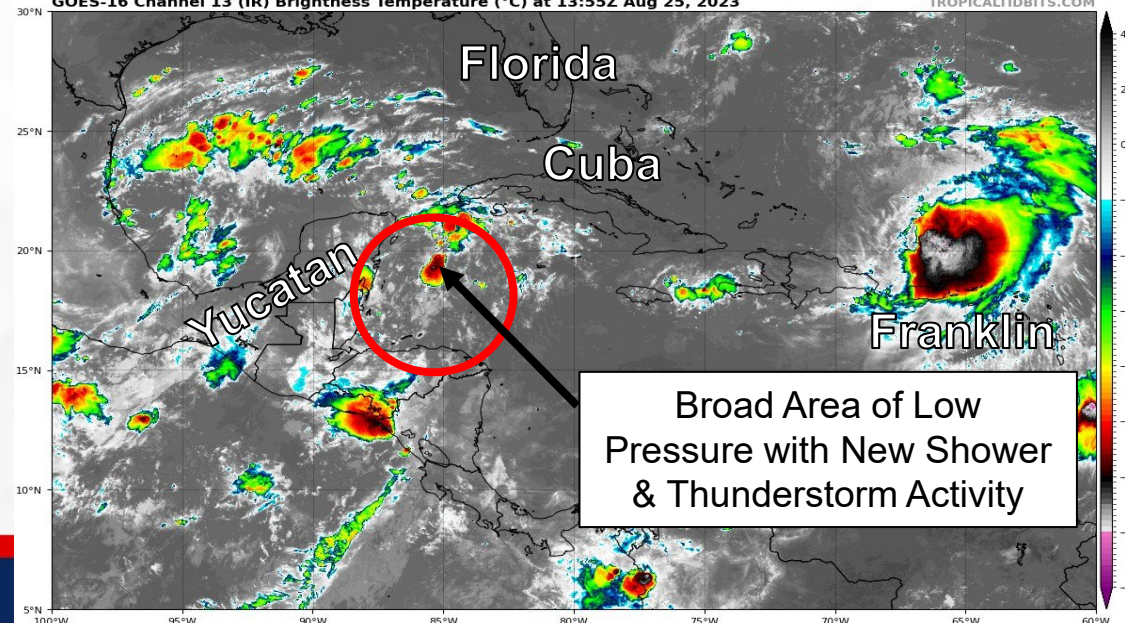
This system should be monitored as it moves into the southern Gulf of Mexico early next week. While it is still too early to discuss the timing, location, and intensity of specific impacts, increasing rain chances and breezy conditions could arrive along the Florida Gulf Coast as early as Tuesday.

* Formation chance through 48 hours...**low...30%**.

* Formation chance through 7 days...**high...70%**.

GOES-16 Channel 13 (IR) Brightness Temperature (°C) at 13:55Z Aug 25, 2023

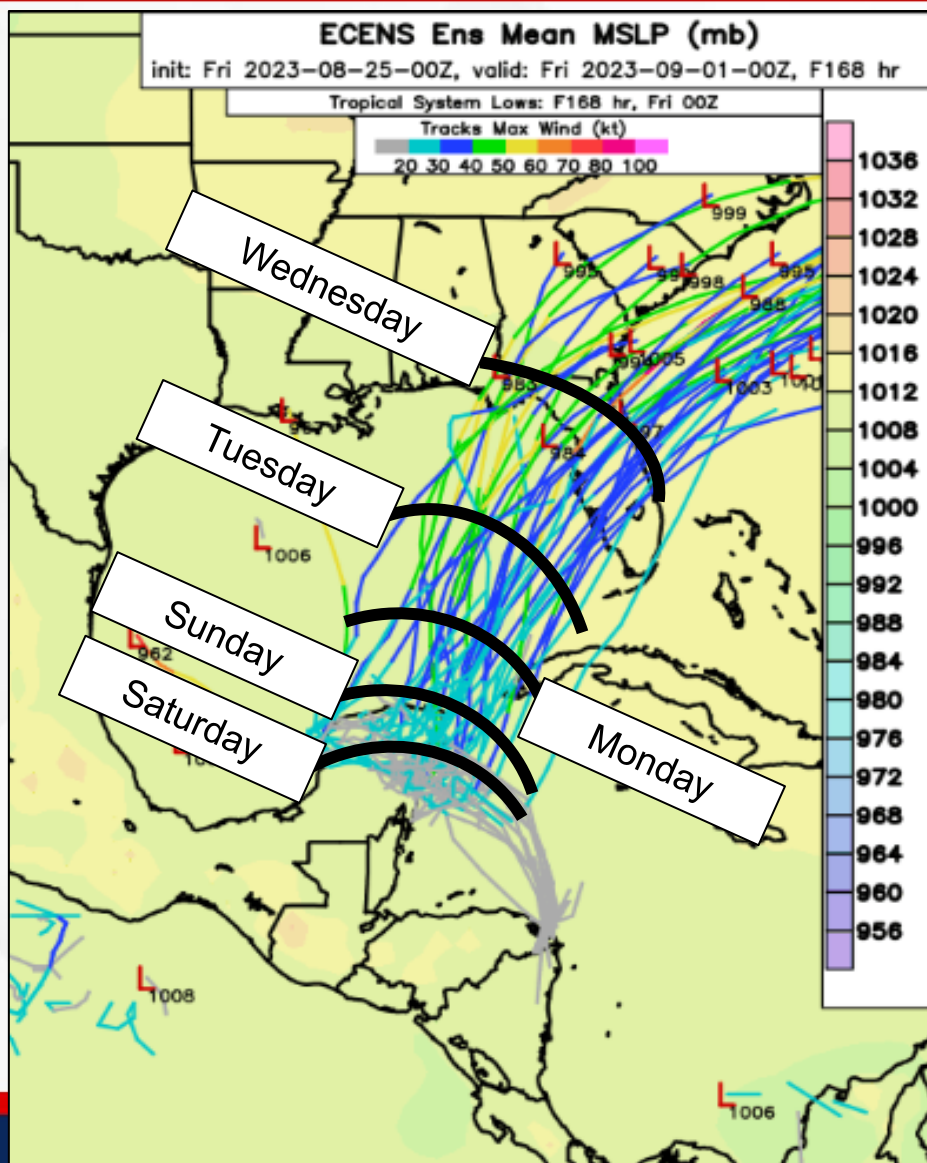
TROPICALTIDBITS.COM





Model Forecasts – Next 7 Days

Northwestern Caribbean Low

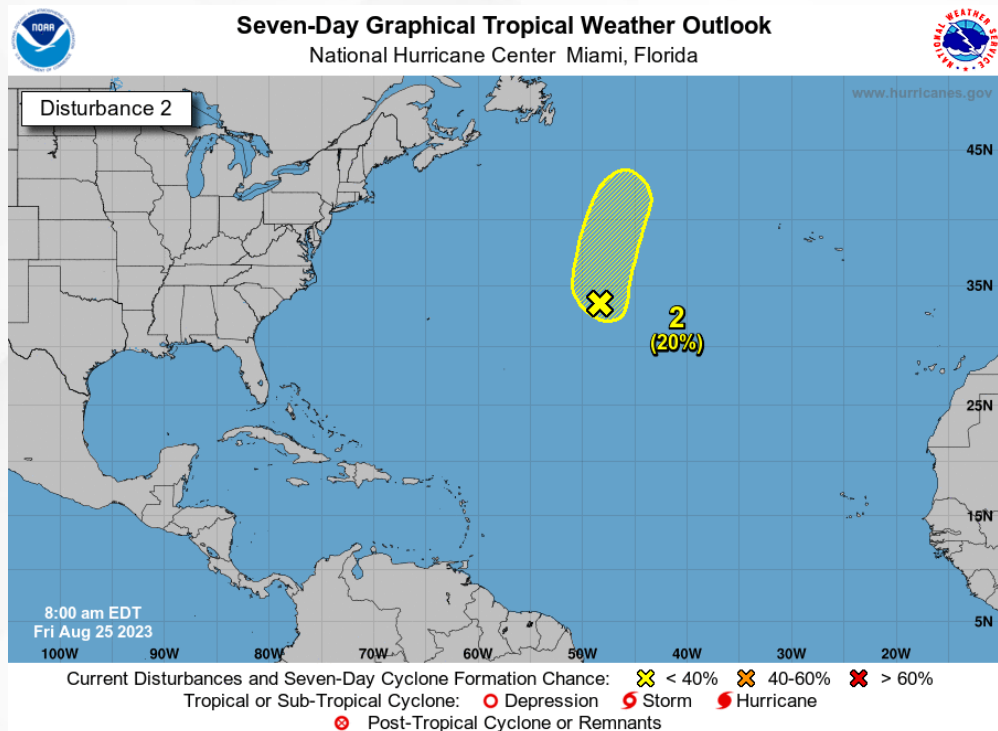


- There has been a little increase in computer model consistency last night and this morning regarding the overall forecast track and intensity with this system. Now that this elongated area of low pressure is over the northwestern Caribbean waters, forecast details will continue to become clearer through the weekend as the system works to develop an organized center of circulation.
- Models have been hinting at an area of low pressure emerging over the northwestern Caribbean Sea this weekend, and advancing toward the Yucatan Peninsula and southern Gulf of Mexico Monday.
- This system will likely continue to advance northward to northeastward over the eastern Gulf of Mexico early next week, approaching the Florida Gulf Coast Tuesday and Wednesday.
- There are varying computer model solutions regarding the system's track (*timing, position, and intensity*); however, model guidance suggests this tropical area of low pressure could move over any location from the Florida Panhandle to the Southwest Florida Coast.
- Current trends in the computer models show a stronger solution taking a more northerly approach toward the Florida Big Bend late Tuesday into Wednesday, with a weaker solution taking a southern path toward the West Florida Coast Tuesday evening into Wednesday morning.



Tropical Weather Outlook

Disturbance 2 – Remnants of Emily ([LINK](#))



An elongated area of low pressure (the remnants of former Tropical Storm Emily), located about 1,000 miles east-northeast of Bermuda, is producing an area of disorganized showers and thunderstorms. Environmental conditions are becoming less favorable for tropical cyclone formation, and the low is expected to merge with a frontal boundary over the north central Atlantic in the next day or so.

This system poses no threat to Florida.

* Formation chance through 48 hours...**low...20%**.

* Formation chance through 7 days...**low...20%**.



48 Hour Formation

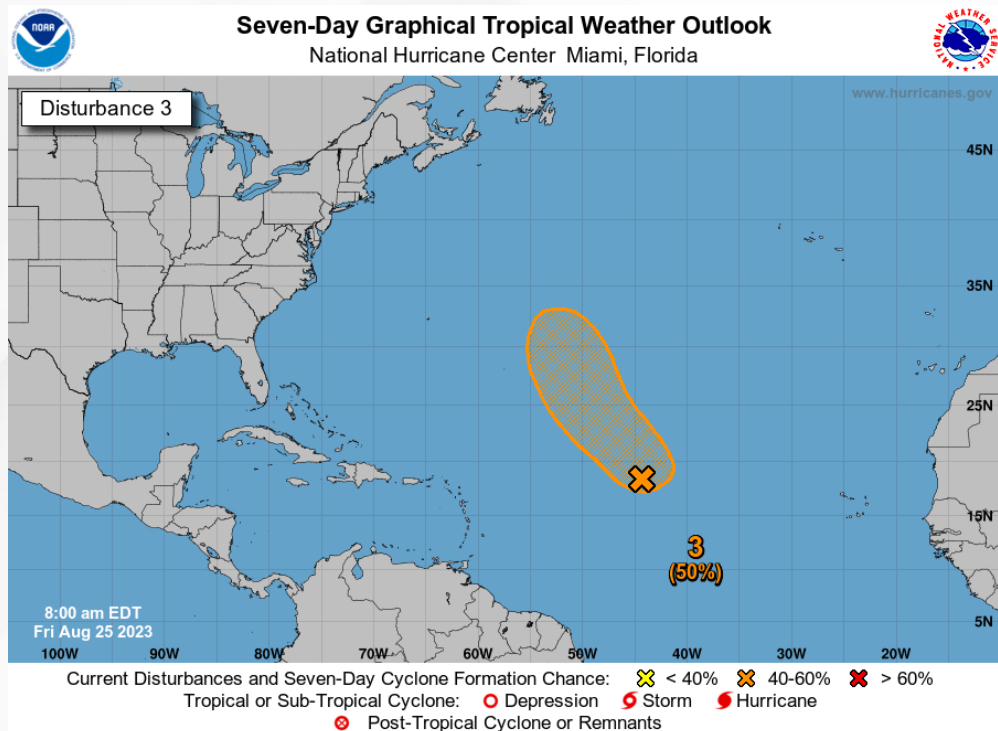


5 Day Formation



Tropical Weather Outlook

Disturbance 3 – Invest 92L ([LINK](#))



Disorganized showers and thunderstorms continue in association with an area of low pressure located about midway between the Cabo Verde Islands and the northern Leeward Islands. Environmental conditions could become more conducive for development this weekend, and a tropical depression could form by early next week while the system moves generally northwestward toward the central subtropical Atlantic.

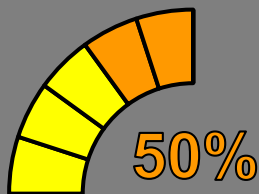
Invest 92L poses no threat to Florida.

* Formation chance through 48 hours...**low...20%.**

* Formation chance through 7 days...**medium...50%.**



48 Hour Formation



5 Day Formation



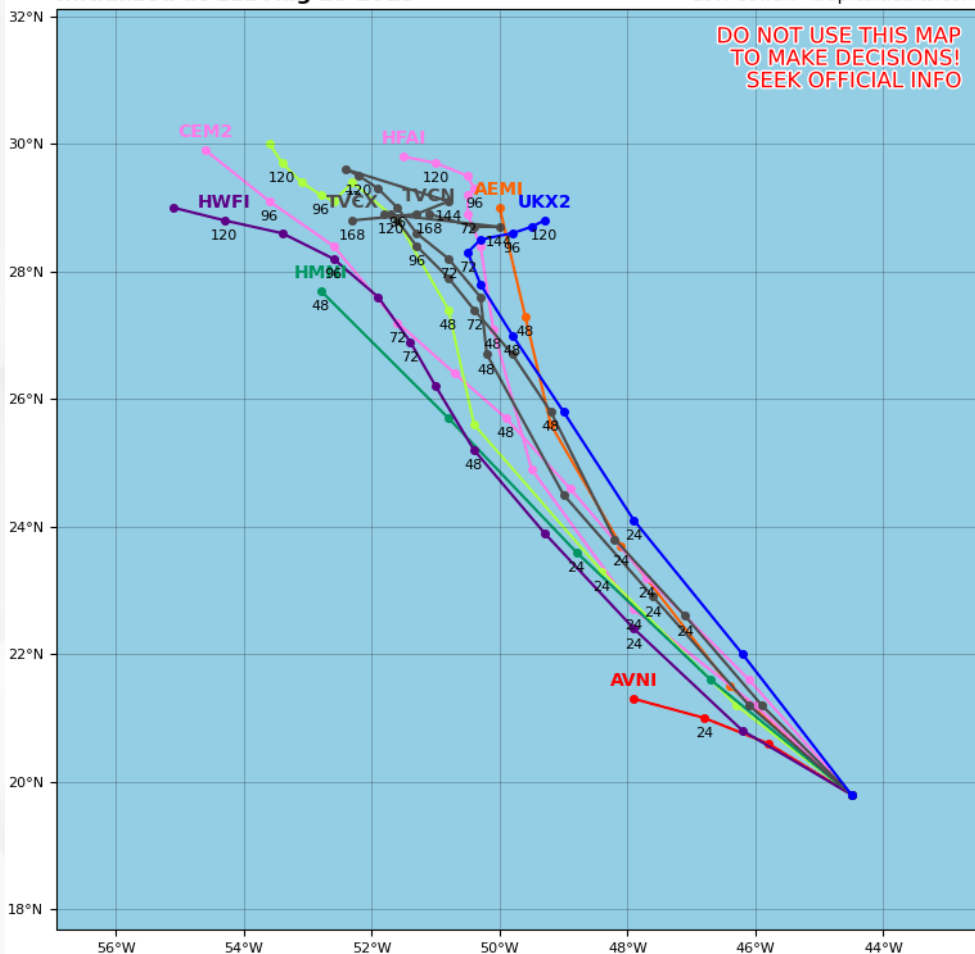
Model Forecasts – Next 5 Days

Invest 92L

Invest 92L Model Track Guidance

Initialized at 12z Aug 25 2023

Levi Cowan - tropicaltidbits.com

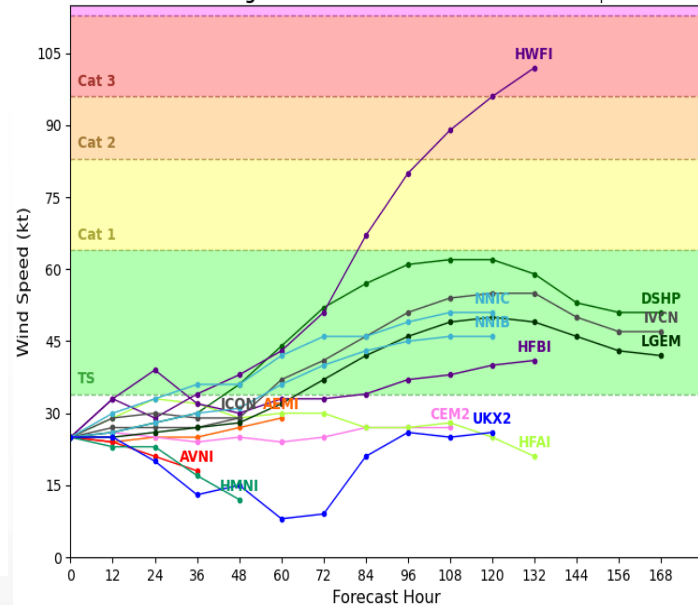


Computer models are in good agreement that Invest 92L will continue to move northwestward over the central tropical Atlantic over the next 5-7 days. There remains some disagreement across the computer models this morning regarding the system's intensity; however, Invest 92L could become a tropical depression over the next 3-5 days.

Invest 92L Model Intensity Guidance

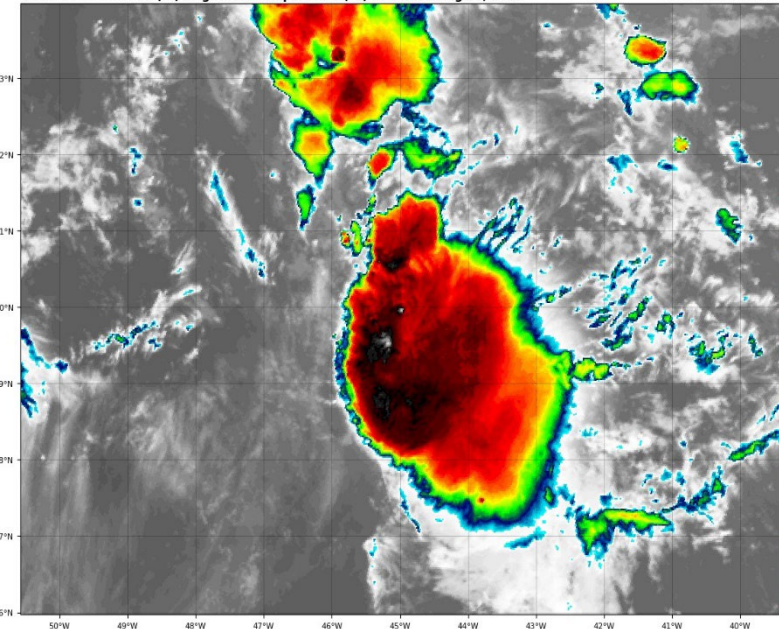
Initialized at 12z Aug 25 2023

Levi Cowan - tropicaltidbits.com



GOES-16 Channel 13 (IR) Brightness Temperature (°C) at 14:15Z Aug 25, 2023

TROPICALTIDBITS.COM





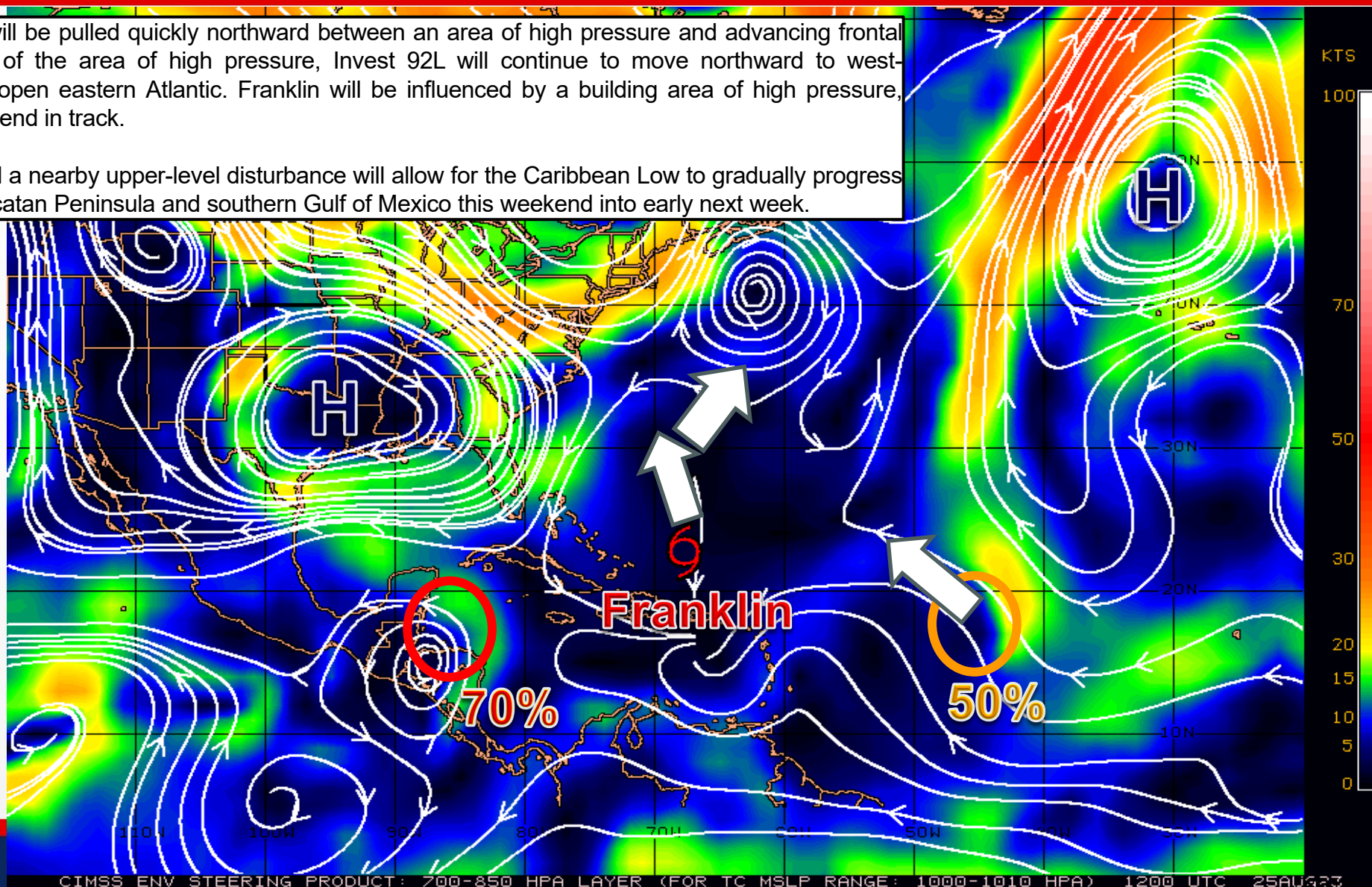
Steering Currents

What is Moving the System?

Color denotes the movement speed through the atmosphere and thin white lines denote direction. Tightly clustered white lines represent faster movement as well.

The remnants of Emily will be pulled quickly northward between an area of high pressure and advancing frontal boundary. To the south of the area of high pressure, Invest 92L will continue to move northward to west-northwestward over the open eastern Atlantic. Franklin will be influenced by a building area of high pressure, resulting in a northward bend in track.

Weaker steering flow and a nearby upper-level disturbance will allow for the Caribbean Low to gradually progress northward toward the Yucatan Peninsula and southern Gulf of Mexico this weekend into early next week.



Fast Moving Storm

Fast Moving Storm

Typical Moving Storm

Slow Moving Storm

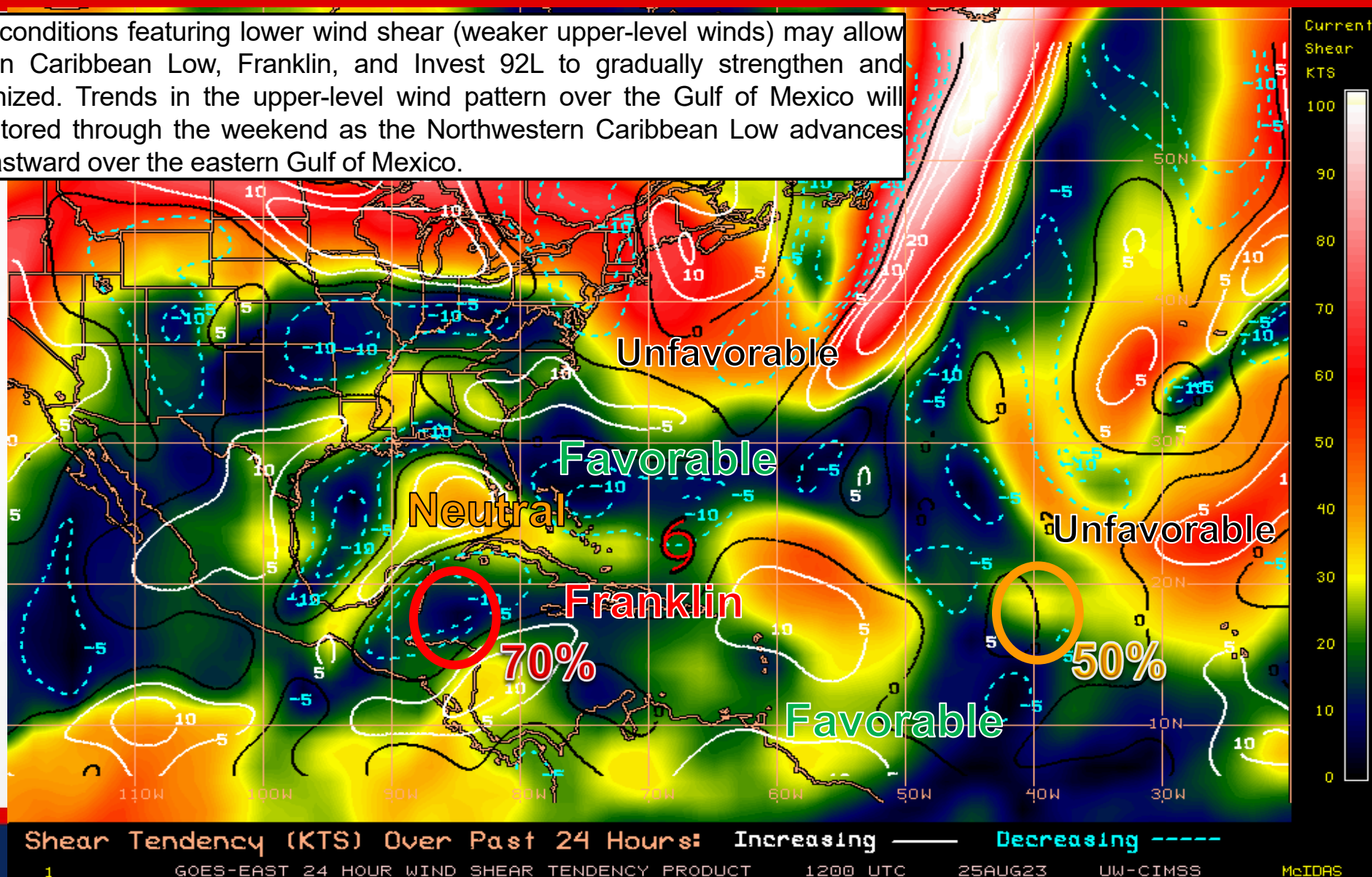


Wind Shear

Is the environment favorable for the system?

Color denotes the amount of wind shear and the lines denote how it have changed over the last 24 hours (dotted lines show decreasing shear and solid lines show increasing).

Generally favorable conditions featuring lower wind shear (weaker upper-level winds) may allow for the Northwestern Caribbean Low, Franklin, and Invest 92L to gradually strengthen and become more organized. Trends in the upper-level wind pattern over the Gulf of Mexico will continue to be monitored through the weekend as the Northwestern Caribbean Low advances northward to northeastward over the eastern Gulf of Mexico.





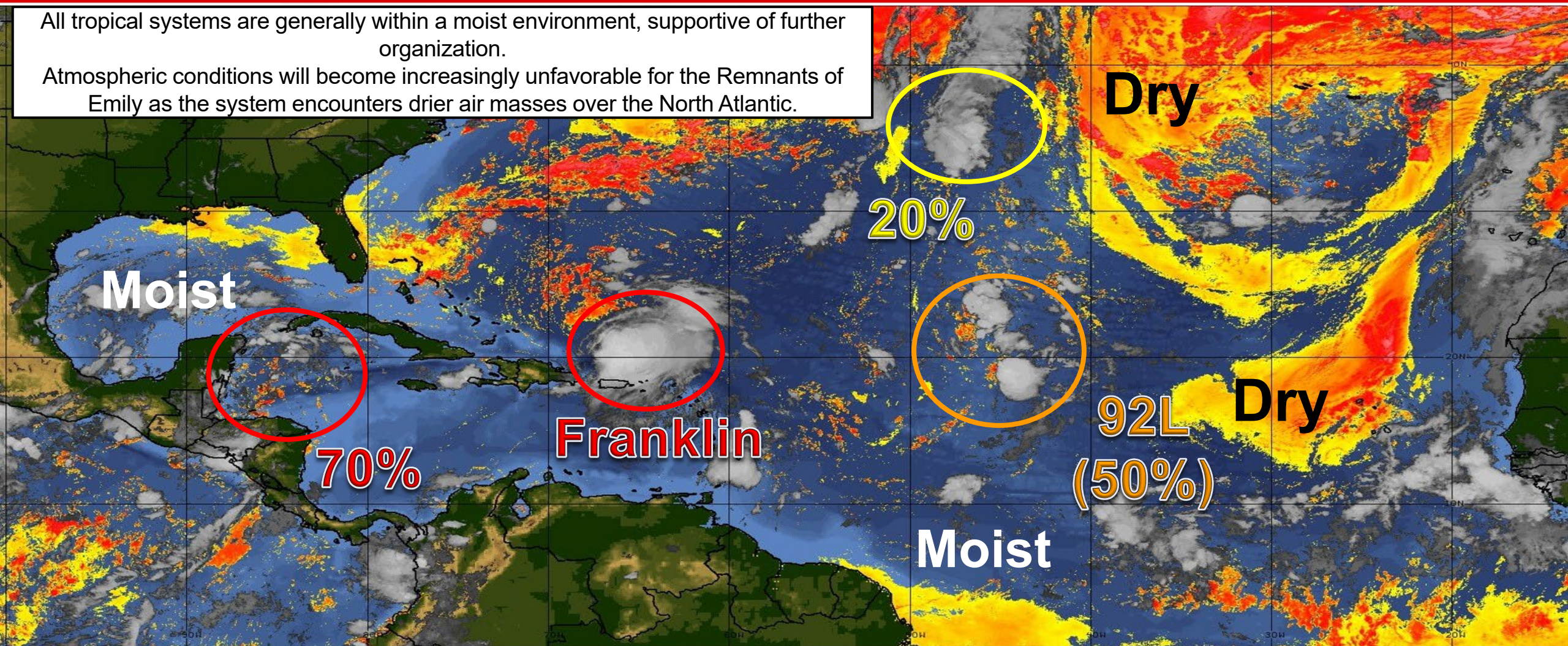
Dry Air & Saharan Dust

Is the environment favorable for the system?

Color denotes concentration of Saharan Dust or dry, stable air.

All tropical systems are generally within a moist environment, supportive of further organization.

Atmospheric conditions will become increasingly unfavorable for the Remnants of Emily as the system encounters drier air masses over the North Atlantic.

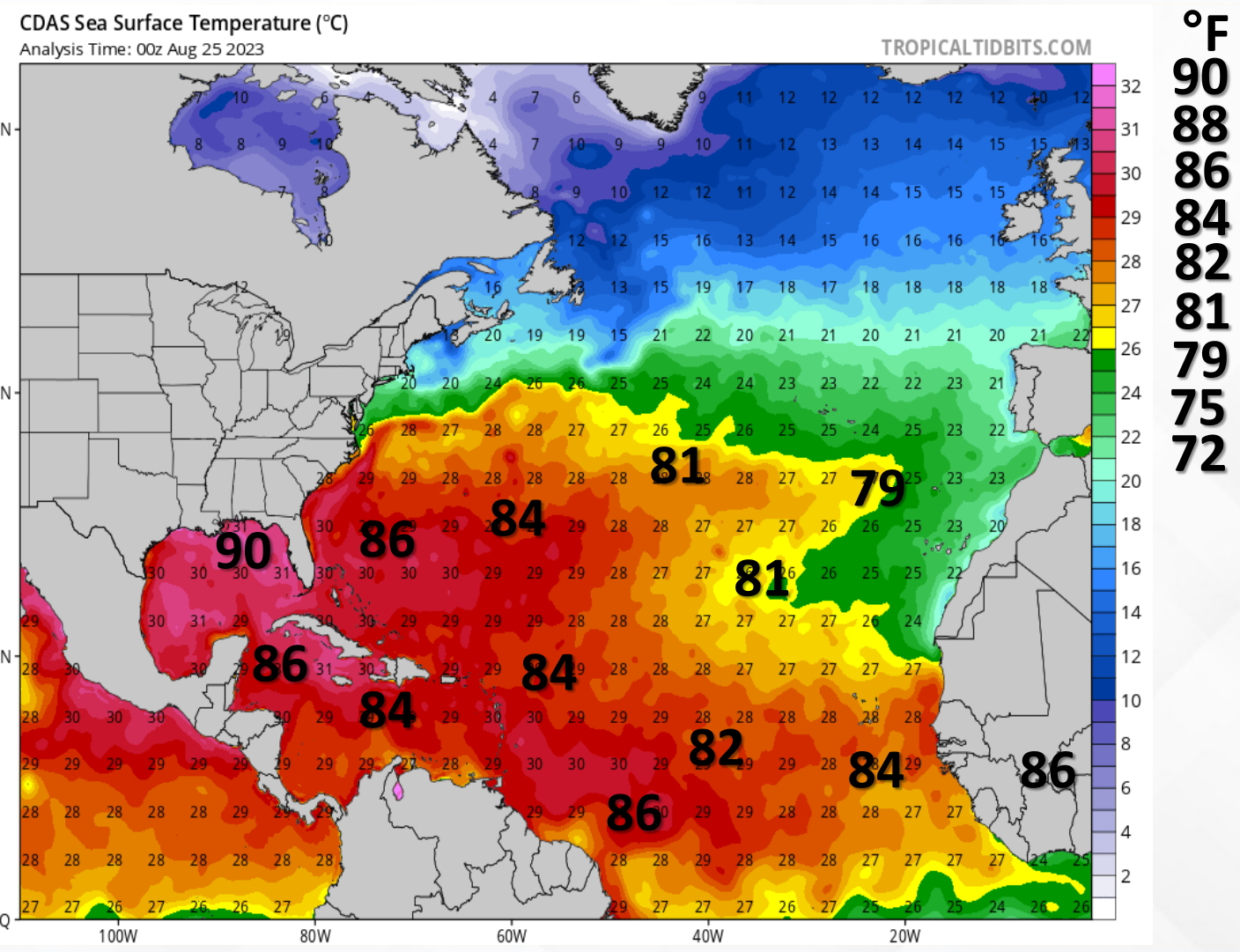
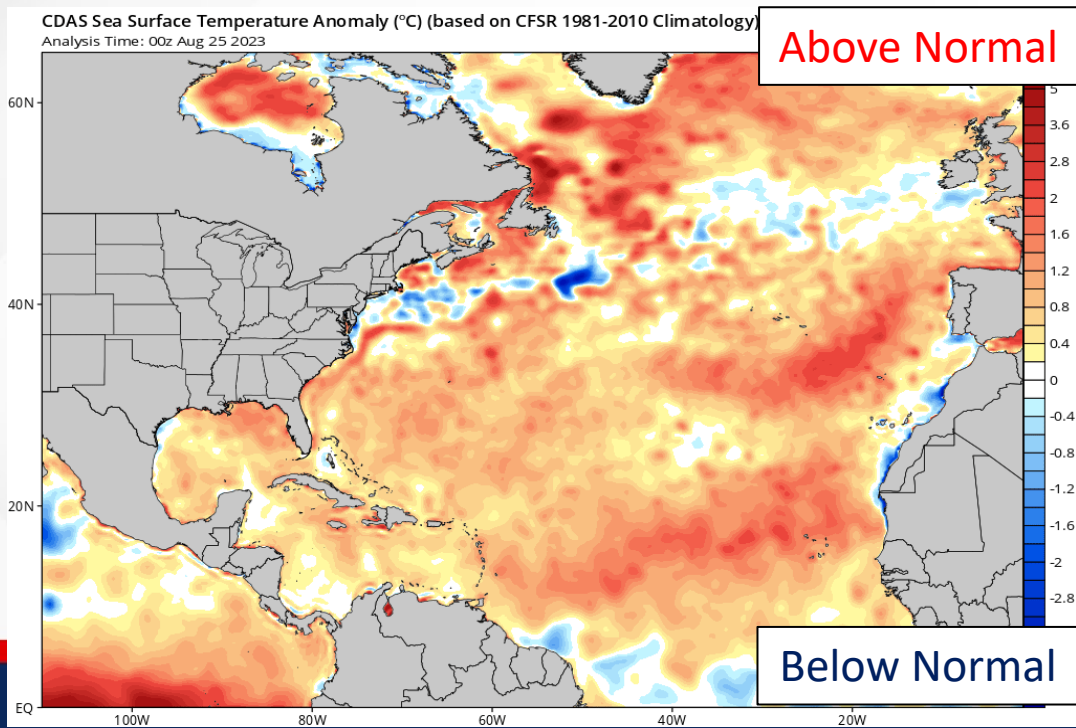




Sea Surface Temperatures & Anomalies

Is the ocean favorable for the system?

Temperatures across the Atlantic Basin are very supportive of tropical cyclone development. Waters across the tropical Atlantic are running 0.5-1.5 degrees above normal, with temperatures in the Gulf of Mexico have reached 1-2 degrees above normal for this time of year.





Summary

Tropical Storm Franklin:

- As of 5:00 AM EDT, Tropical Storm Franklin is located about 215 miles east-northeast of Grand Turk Island, and is moving east-northeastward at 6 mph.
- This east-northeastward motion is expected to continue today, with a sharp turn toward the north expected tonight and Saturday.
- A northward or north-northwestward motion over the western Atlantic can be expected to continue through early next week.
- Maximum sustained winds are near 60 mph, and gradual strengthening is forecast. Franklin will likely become a hurricane over the weekend.
- *Franklin poses no direct threat to Florida; however, and elevated risk of rip currents and increased heights of breakers in the surf zone will be possible along Atlantic Coast beaches.*

Northwestern Caribbean Low:

- A broad area of low pressure over the northwestern Caribbean Sea is producing disorganized showers and thunderstorms.
- Environmental conditions appear conducive for gradual development of this system during the next several days, and a tropical depression is likely to form late this weekend or early next week while moving generally northward over the northwestern Caribbean Sea and eastern Gulf of Mexico.
- There is a low (30%) chance of development over the next 48 hours, and a high (70%) chance of development over the next 7 days.
- *This system should be monitored as it gradually moves northward into the southern Gulf of Mexico early next week.*

Remnants of Emily (Central Tropical Atlantic):

- An elongated area of low pressure (the remnants of former Tropical Storm Emily), located about 1,000 miles east-northeast of Bermuda, is producing an area of disorganized showers and thunderstorms.
- Environmental conditions are becoming less favorable for tropical cyclone formation, and the low is expected to merge with a frontal boundary over the north central Atlantic in the next day or so.
- There is a low (20%) chance of development over the next 48 hours and 7 days. *This system poses no threat to Florida.*

Invest 92L (Eastern Tropical Atlantic):

- Disorganized showers and thunderstorms continue in association with an area of low pressure located about midway between the Cabo Verde Islands and the northern Leeward Islands.
- Environmental conditions could become more conducive for development this weekend, and a tropical depression could form by early next week while the system moves generally northwestward toward the central subtropical Atlantic.
- There is a low (20%) chance of development over the next 48 hours, and a medium (50%) chance of development over the next 7 days.
- *Invest 92L poses no threat to Florida.*

Florida Outlook:

- Hot and humid conditions persist across the Sunshine State, with Heat Advisories in effect for the western Panhandle this afternoon.
- Isolated to scattered showers and embedded thunderstorms possible over the southern Peninsula through the afternoon hours (40-60% chance of rain).
- An elevated rip current risk will linger along all Panhandle and Atlantic Coast beaches today, locally higher along the Northeast Florida Coast.
- The next name on this list is **Idalia (ee-DAL-ya)**.

The next briefing package will be issued on Saturday. For the latest information, please visit the National Hurricane Center website.



Tropical Update



Created by:

Caitlyn Gillespie, Deputy State Meteorologist

Caitlyn.Gillespie@em.myflorida.com

State Meteorological Support Unit

Florida Division of Emergency Management

Users wishing to subscribe (approval pending) to this distribution list, register at:

https://public.govdelivery.com/accounts/FLDEM/subscriber/new?topic_id=SERT_Met_Tropics.

Other reports available for subscription are available at:

<https://public.govdelivery.com/accounts/FLDEM/subscriber/new?preferences=true>