



# Tropical Update



10:30 AM EDT

Thursday, August 24, 2023

## **Tropical Storm Franklin, Remnants of Emily (70%), Invest 92L (40%), & Northwestern Caribbean Sea (50%)**

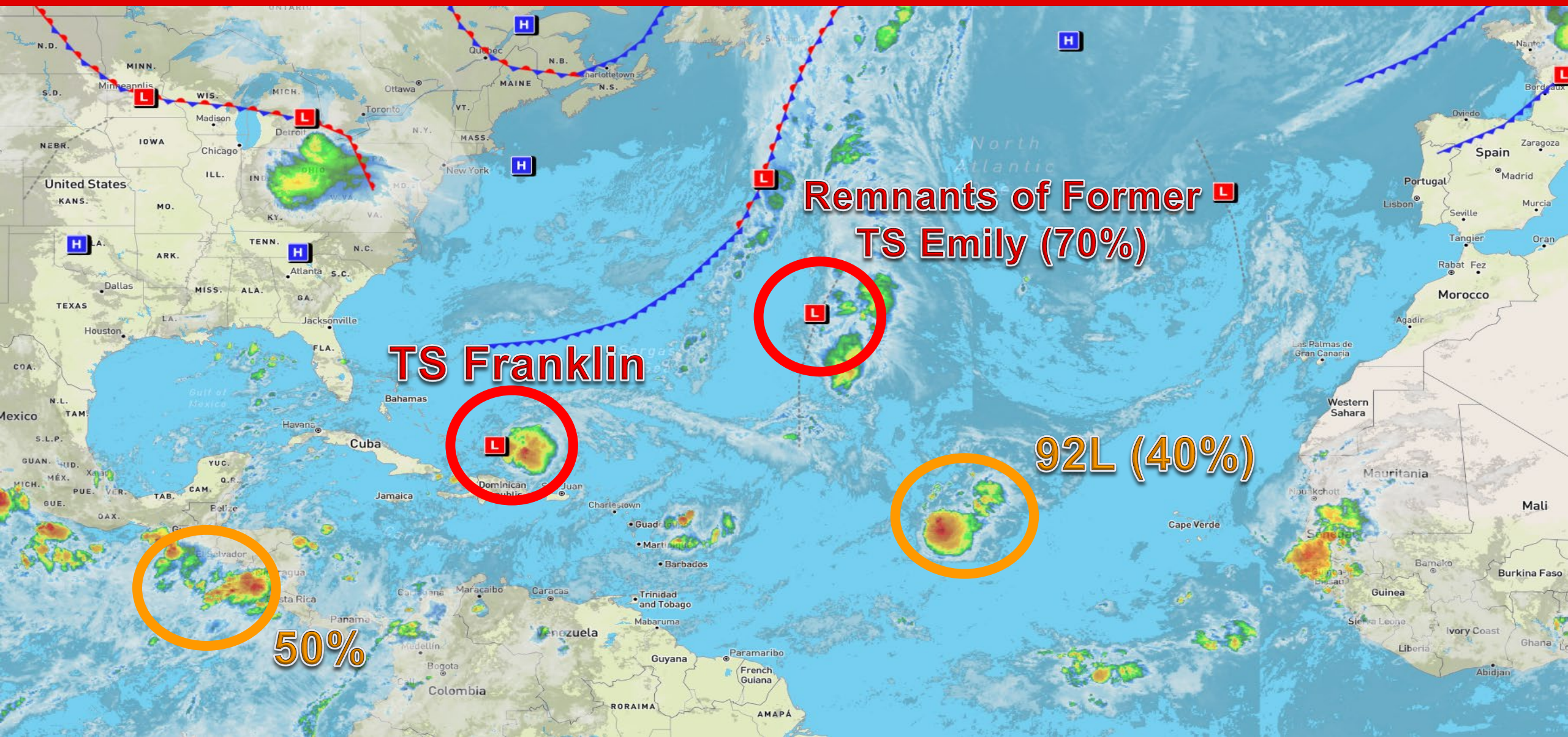
This update is intended for government and emergency response officials, and is provided for informational and situational awareness purposes only. Forecast conditions are subject to change based on a variety of environmental factors. For additional information, or for any life safety concerns with an active weather event please contact your County Emergency Management or Public Safety Office, local National Weather Service forecast office, or visit the National Hurricane Center website at [www.hurricanes.gov](http://www.hurricanes.gov).





# Atlantic Basin Satellite Image

Chance of development:      None      Low      Medium      High







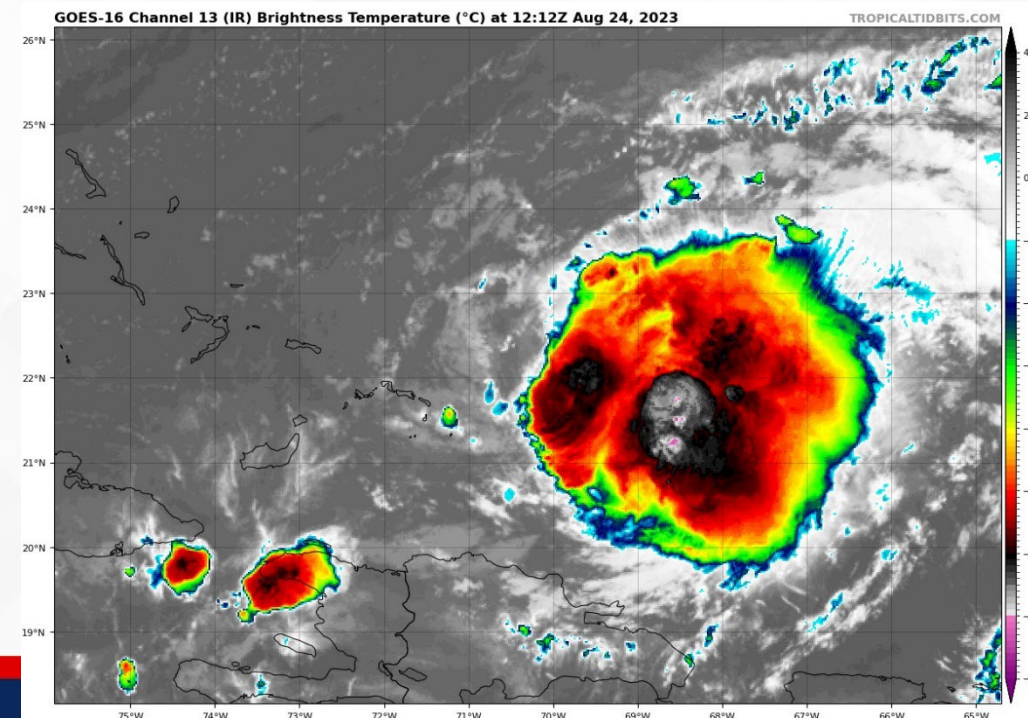
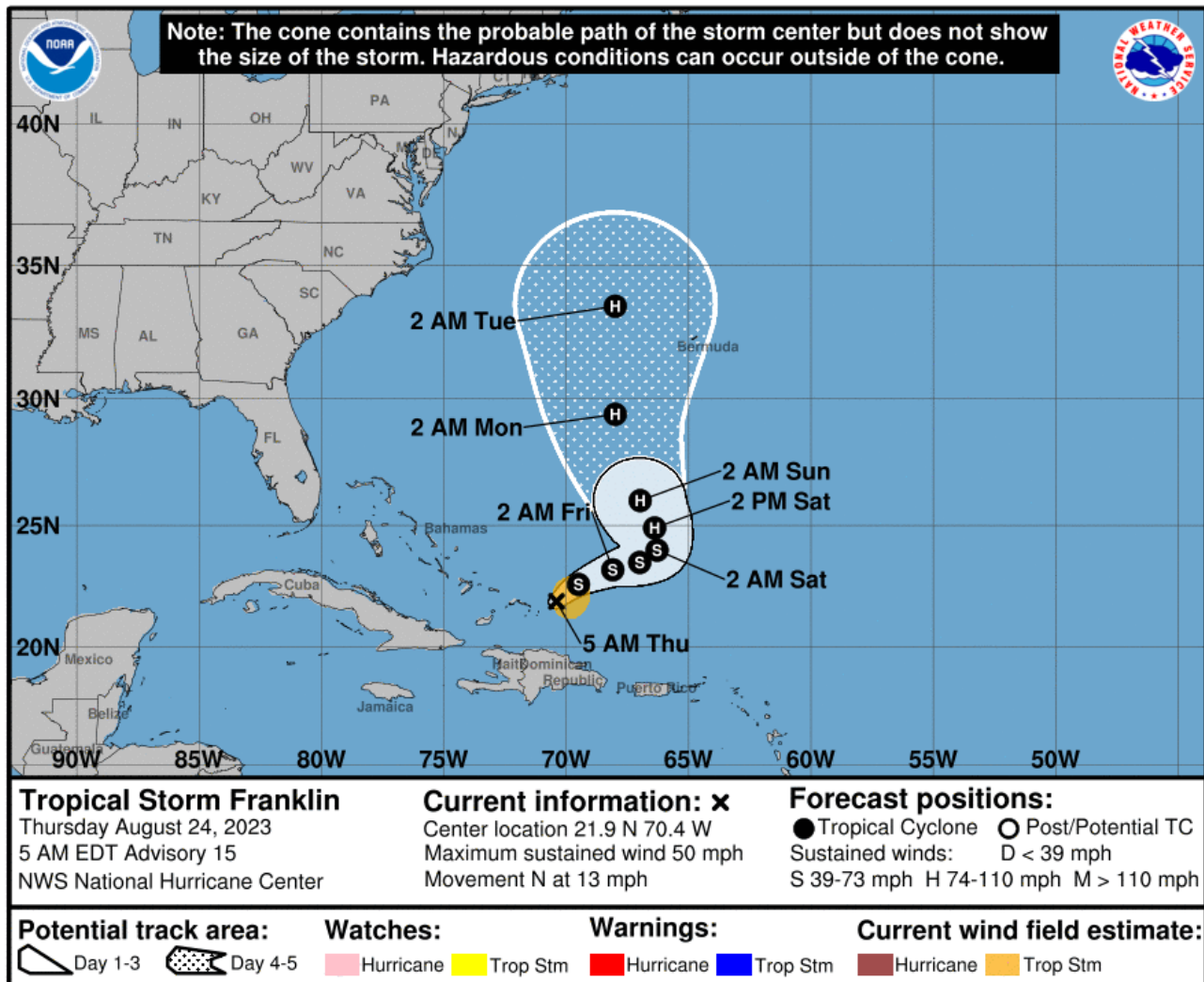
# Forecast Cone

## Tropical Storm Franklin ([LINK](#))

- **Location:** 55 miles ENE of Grand Turk Island
- **Maximum Sustained Winds:** 50 mph
- **Current Movement:** N at 13 mph
- **FL Watches/Warnings:** None

A turn to the northeast and then east-northeast with a decrease in forward speed is forecast during the next couple of days. On the forecast track, the center of Franklin will continue to move farther away from the Dominican Republic and over the southwestern Atlantic into the weekend. Gradual strengthening is forecast, and Franklin is expected to become a hurricane in a couple of days.

*Franklin poses no direct threat to Florida; however, and elevated risk of rip currents and increased heights of breakers in the surf zone will be possible along Atlantic Coast beaches.*



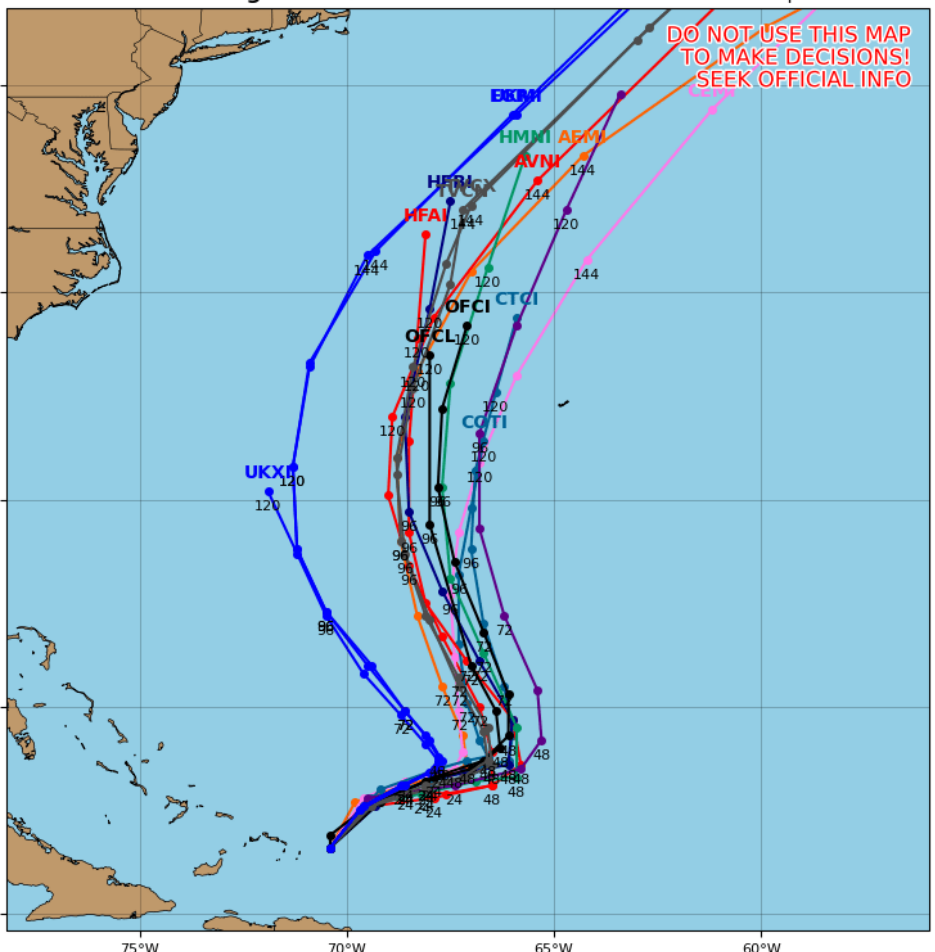


# Model Forecasts – Next 5 Days

## Tropical Storm Franklin

### Tropical Storm FRANKLIN Model Track Guidance

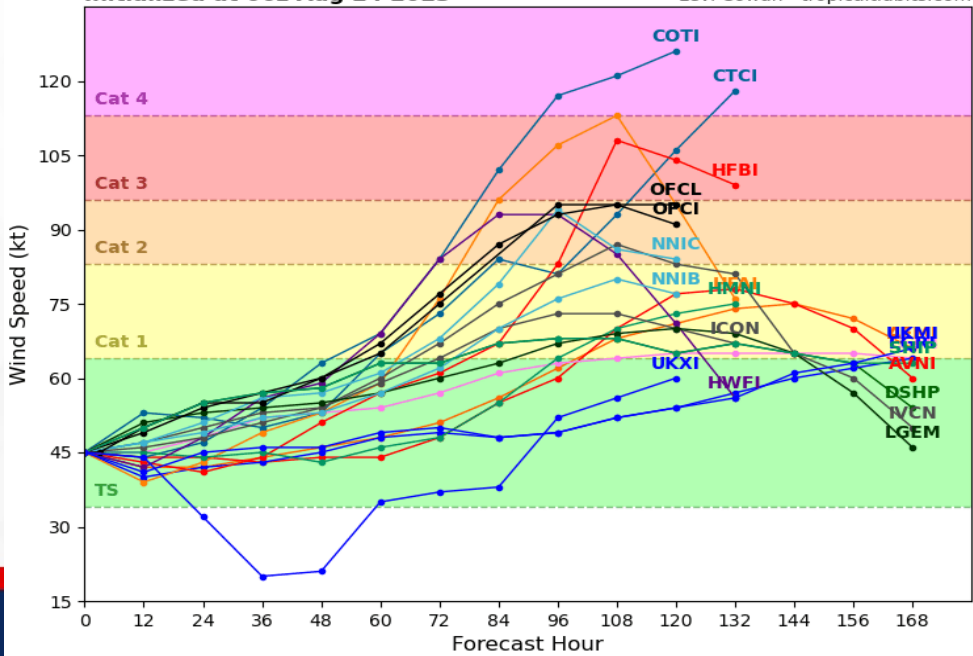
Initialized at 06z Aug 24 2023 Levi Cowan - tropicaltidbits.com



Computer models are in good agreement that Franklin will continue an east-northeastward motion over the next 24-48 hours. Guidance suggests that Franklin will bend back northward at a slightly faster pace after the 72-hour timeframe. Computer model guidance is in good agreement that Franklin will undergo a gradual strengthening trend as it remains over the warm southwestern Atlantic waters. Franklin could become a hurricane as early as Saturday.

### Tropical Storm FRANKLIN Model Intensity Guidance

Initialized at 06z Aug 24 2023 Levi Cowan - tropicaltidbits.com





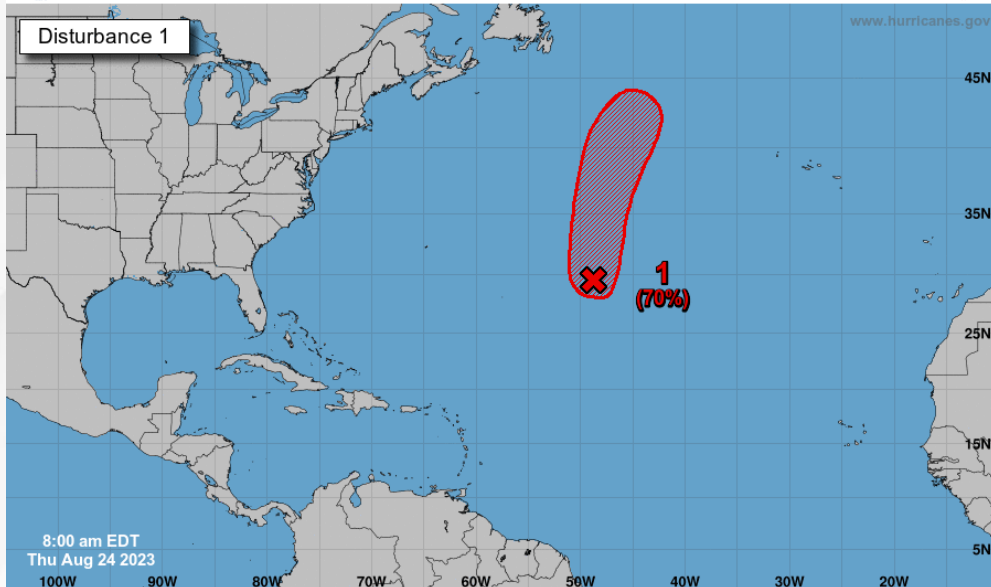
# Tropical Weather Outlook

Disturbance 1 – Remnants of Emily ([LINK](#))



## Seven-Day Graphical Tropical Weather Outlook

National Hurricane Center Miami, Florida

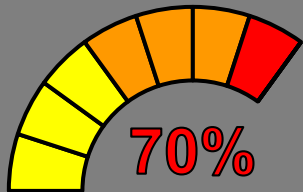


An area of low pressure located more than 1,000 miles east-southeast of Bermuda (the remnants of former Tropical Storm Emily) continues to produce a large but elongated area of disorganized showers and thunderstorms. Upper-level winds are generally conducive for development today, and this system is likely to regenerate into a tropical storm over the next couple of days as it moves northward over the subtropical central Atlantic. By this weekend, the system is anticipated to merge with a frontal boundary north of the Gulf Stream.

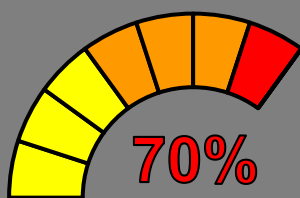
*This system poses no threat to Florida.*

\* Formation chance through 48 hours...**high...70%**.

\* Formation chance through 7 days...**high...70%**.



48 Hour Formation



5 Day Formation





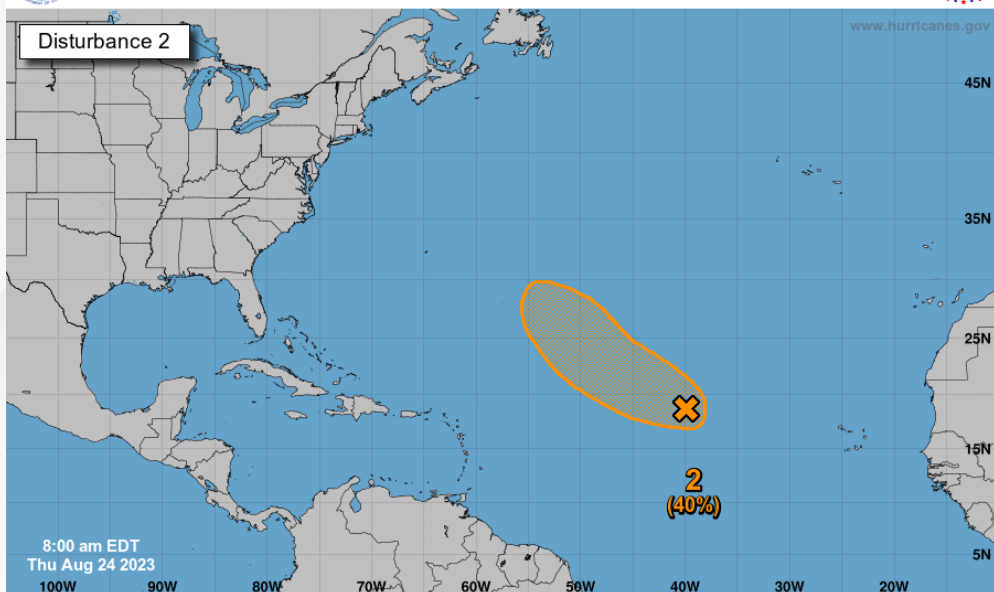
# Tropical Weather Outlook

Disturbance 2 – Invest 92L ([LINK](#))



## Seven-Day Graphical Tropical Weather Outlook

National Hurricane Center Miami, Florida



Disorganized showers and thunderstorms continue in association with an area of low pressure located several hundred miles west of the Cabo Verde Islands. Despite marginal environmental conditions, slow development is possible, and a tropical depression could form by early next week while the system moves west-northwestward to northwestward into the central subtropical Atlantic.

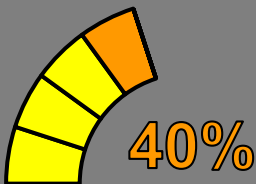
*Invest 92L poses no threat to Florida.*

\* Formation chance through 48 hours...**low...10%**.

\* Formation chance through 7 days...**medium...40%**.



48 Hour Formation



5 Day Formation



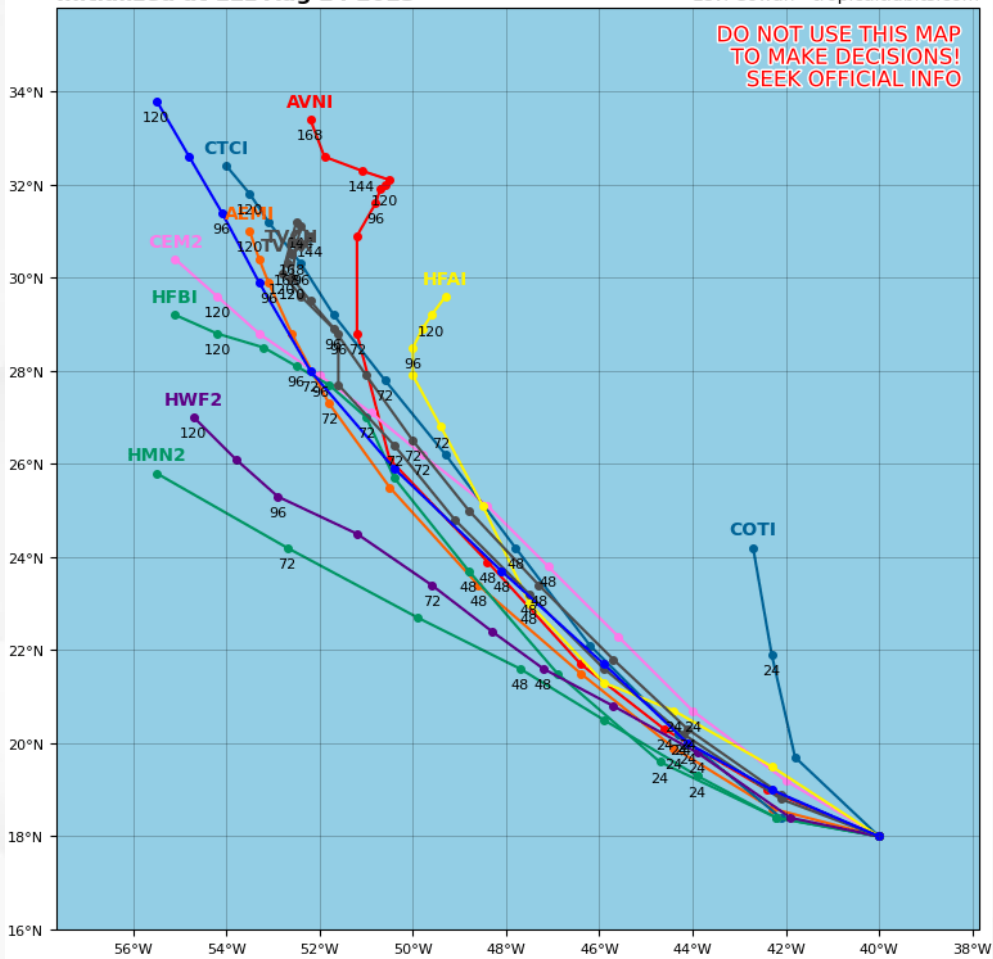
# Model Forecasts – Next 5 Days

## Invest 92L

### Invest 92L Model Track Guidance

Initialized at 12z Aug 24 2023

Levi Cowan - tropicaltidbits.com

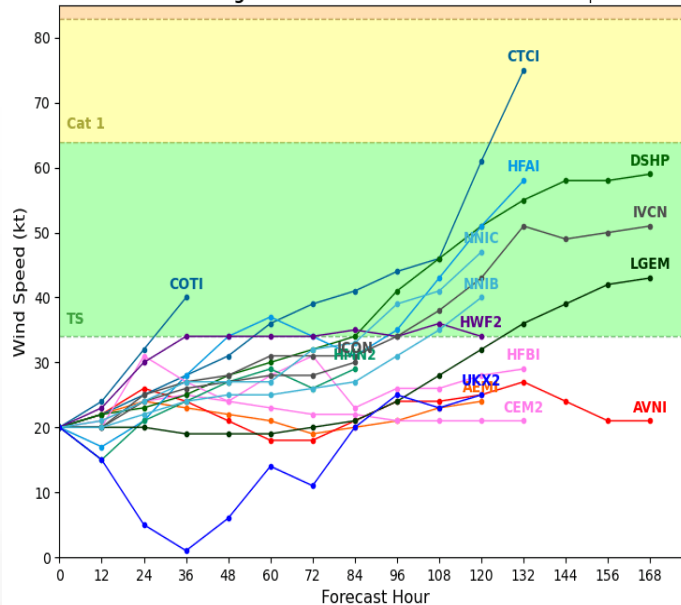


Computer models are in good agreement that Invest 92L will continue to move northwestward over the central tropical Atlantic over the next 5-7 days. There remains some disagreement across the computer models this morning regarding the system's intensity; however, Invest 92L could become a tropical depression over the next 3-5 days.

### Invest 92L Model Intensity Guidance

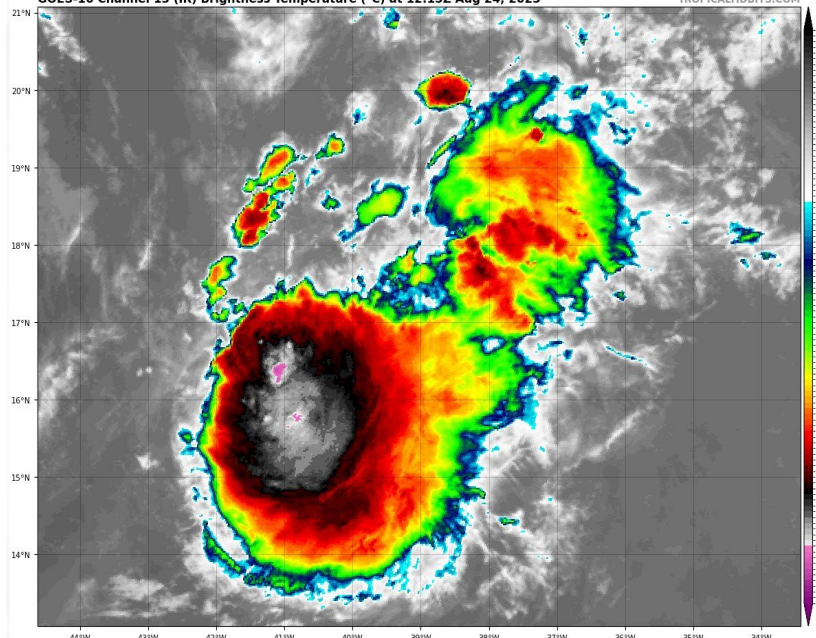
Initialized at 12z Aug 24 2023

Levi Cowan - tropicaltidbits.com



GOES-16 Channel 13 (IR) Brightness Temperature (°C) at 12:15Z Aug 24, 2023

TROPICALTIDBITS.COM





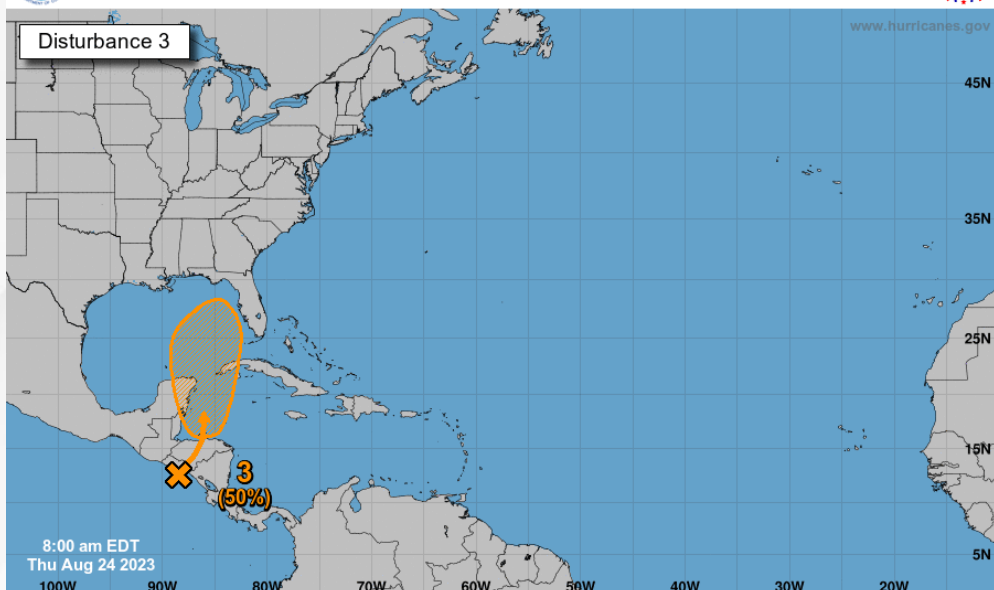
# Tropical Weather Outlook

## Disturbance 3 – Northwestern Caribbean Sea ([LINK](#))



### Seven-Day Graphical Tropical Weather Outlook

National Hurricane Center Miami, Florida



Current Disturbances and Seven-Day Cyclone Formation Chance: < 40% 40-60% > 60%  
Tropical or Sub-Tropical Cyclone: Depression Storm Hurricane  
 Post-Tropical Cyclone or Remnants

10%

48 Hour Formation

50%

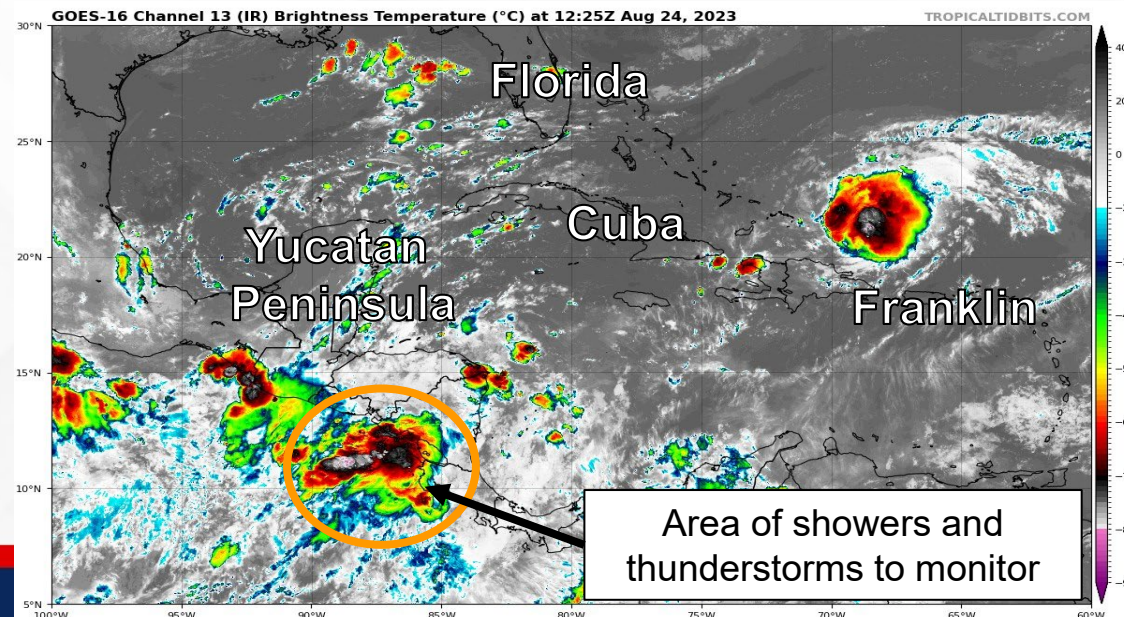
5 Day Formation

A broad area of low pressure, originating along the East Pacific Coast of Central America, is forecast to move into the northwestern Caribbean Sea by this weekend. Some gradual development of this system is possible thereafter into early next week, and a tropical depression could while it moves slowly northward, entering the eastern Gulf of Mexico.

*This system should be monitored as the area of low pressure moves into the northwestern Caribbean Sea and southern Gulf of Mexico this weekend into early next week.*

\* Formation chance through 48 hours...**low...10%.**

\* Formation chance through 7 days...**medium...50%.**

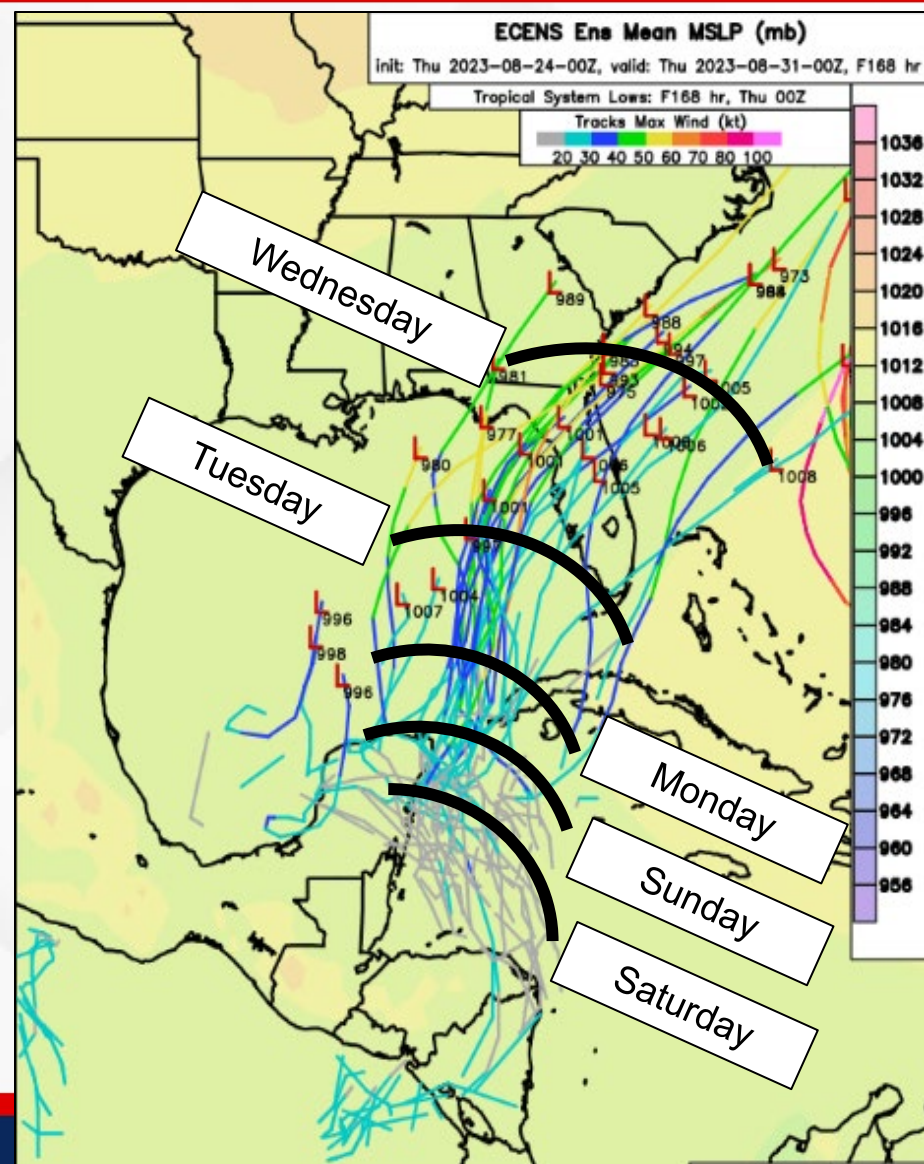






# Model Forecasts – Next 7 Days

## Northwestern Caribbean Sea



- There has been very little consistency between computer models regarding the overall forecast track and intensity with this system, and **forecast details will continue to become clearer through the weekend once the system enters the northwestern Caribbean Sea.**
- Models have been hinting at an area of low pressure emerging over the northwestern Caribbean Sea this weekend, and advancing toward the Yucatan Peninsula and southern Gulf of Mexico Sunday and Monday.
- This system will likely continue to advance northward to northeastward over the eastern Gulf of Mexico Monday into Tuesday.
- There are varying computer model solutions regarding the system's track (*timing, position, and intensity*); however, model guidance suggests this tropical area of low pressure could move over any location from the Florida Panhandle to the Southwest Florida Coast.



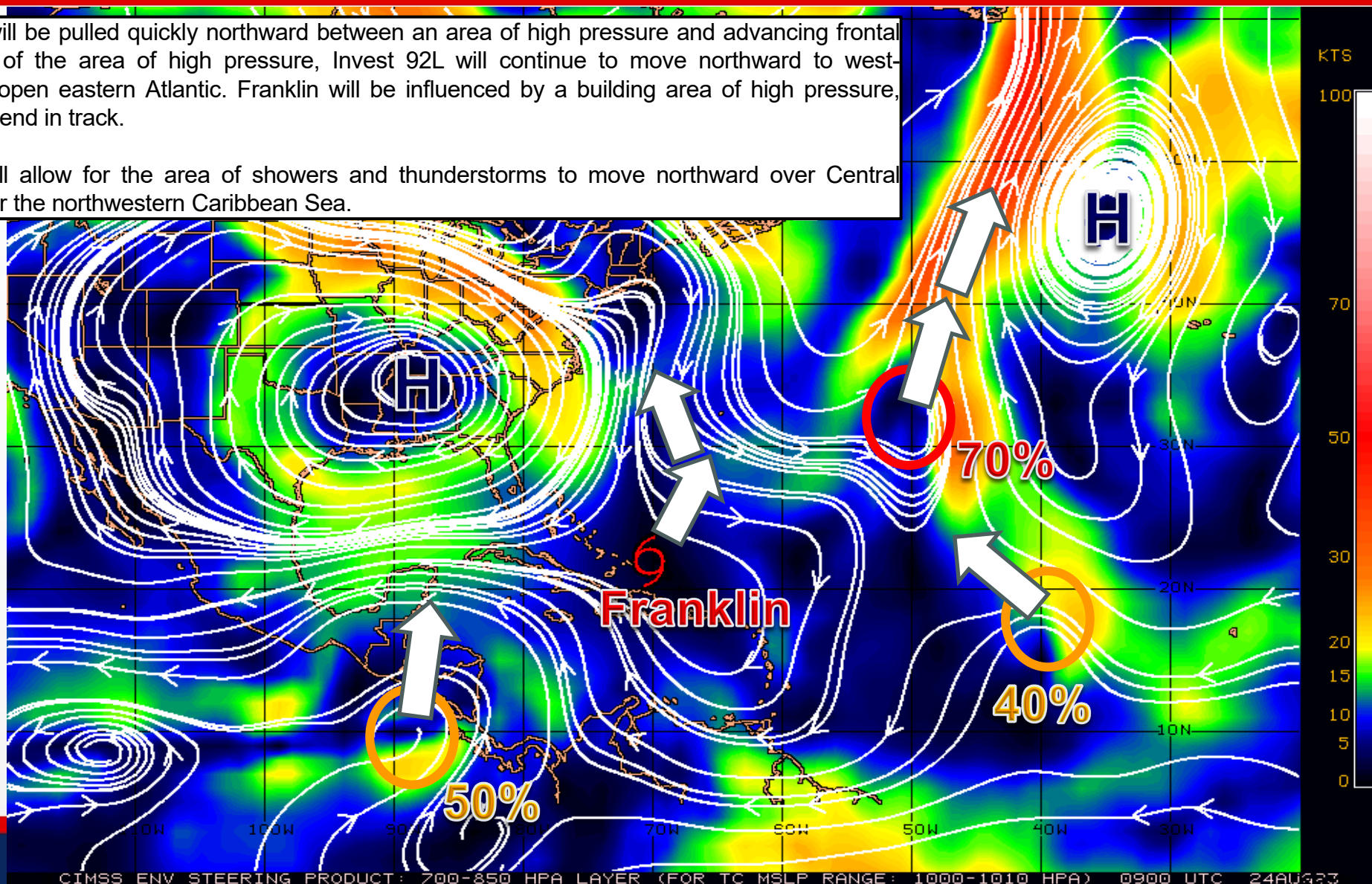
# Steering Currents

## What is Moving the System?

Color denotes the movement speed through the atmosphere and thin white lines denote direction. Tightly clustered white lines represent faster movement as well.

The remnants of Emily will be pulled quickly northward between an area of high pressure and advancing frontal boundary. To the south of the area of high pressure, Invest 92L will continue to move northward to west-northwestward over the open eastern Atlantic. Franklin will be influenced by a building area of high pressure, resulting in a northward bend in track.

Weaker steering flow will allow for the area of showers and thunderstorms to move northward over Central America and emerge over the northwestern Caribbean Sea.







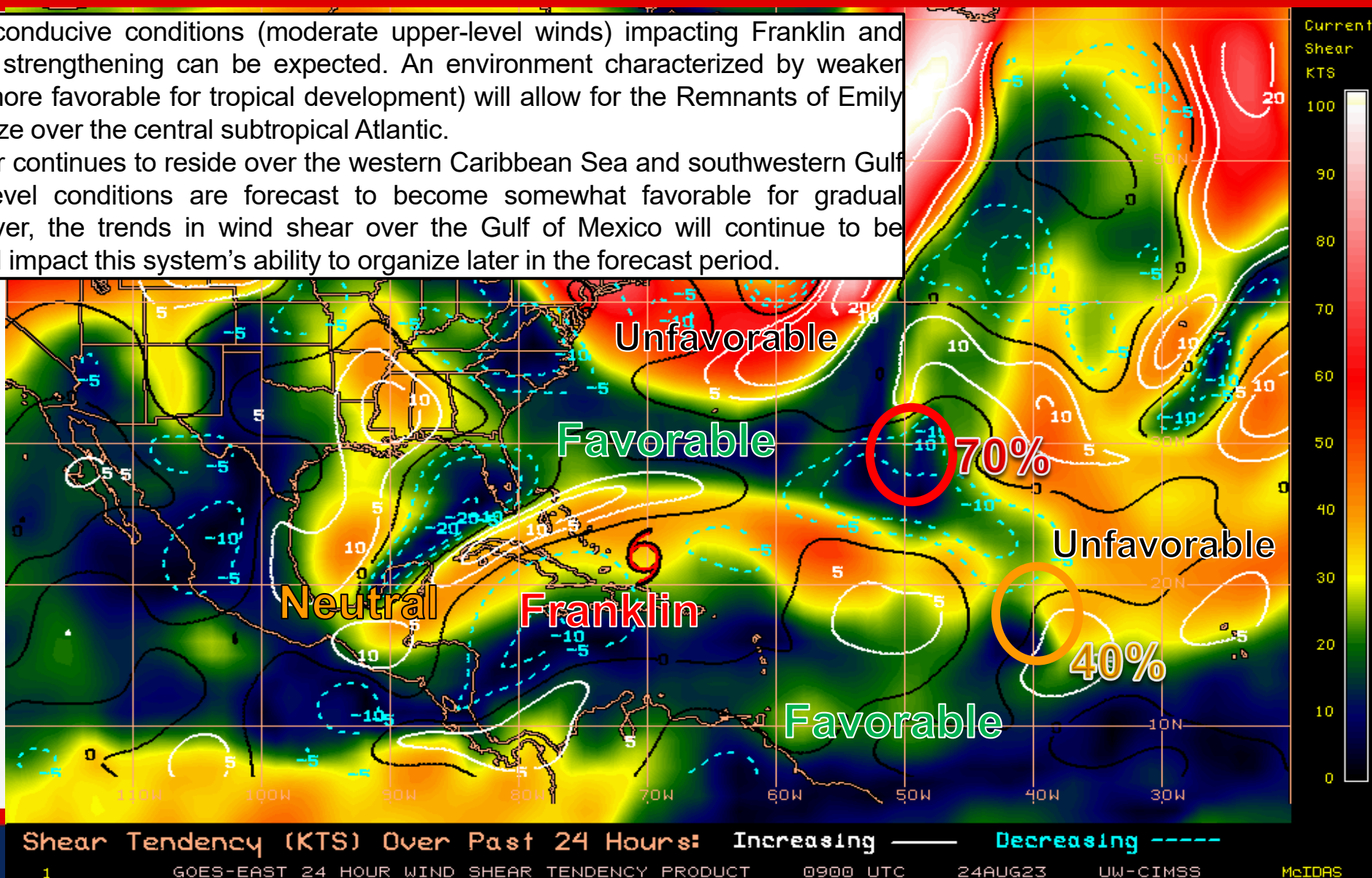
# Wind Shear

## Is the environment favorable for the system?

Color denotes the amount of wind shear and the lines denote how it have changed over the last 24 hours (dotted lines show decreasing shear and solid lines show increasing).

Despite marginally conducive conditions (moderate upper-level winds) impacting Franklin and Invest 92L, gradual strengthening can be expected. An environment characterized by weaker upper-level winds (more favorable for tropical development) will allow for the Remnants of Emily to continue to organize over the central subtropical Atlantic.

Moderate wind shear continues to reside over the western Caribbean Sea and southwestern Gulf of Mexico. Upper-level conditions are forecast to become somewhat favorable for gradual development; however, the trends in wind shear over the Gulf of Mexico will continue to be monitored as this will impact this system's ability to organize later in the forecast period.





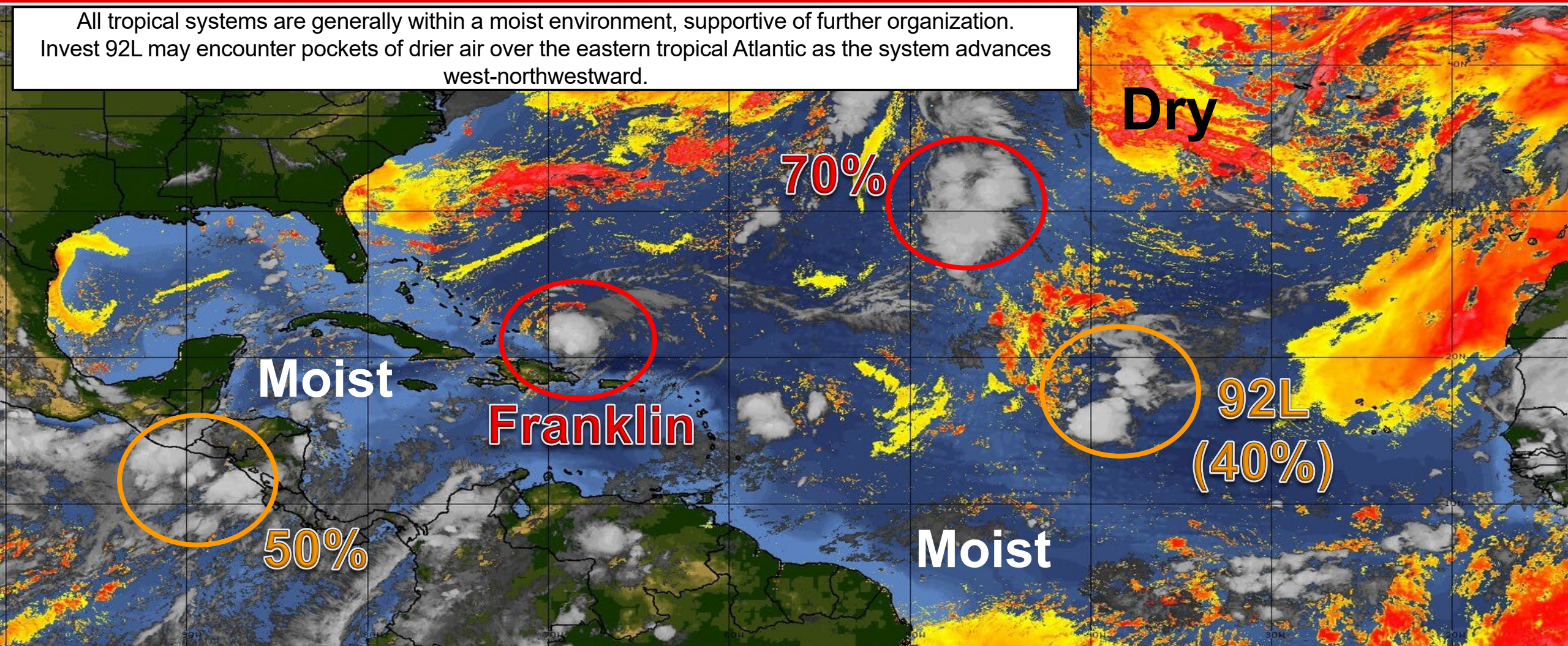


# Dry Air & Saharan Dust

## Is the environment favorable for the system?

Color denotes concentration of Saharan Dust or dry, stable air.

All tropical systems are generally within a moist environment, supportive of further organization. Invest 92L may encounter pockets of drier air over the eastern tropical Atlantic as the system advances west-northwestward.



LESS <----- DRY AIR (LOW/MID-LEVEL) AND/OR DUSTY SAL AIRMASS -----> MORE

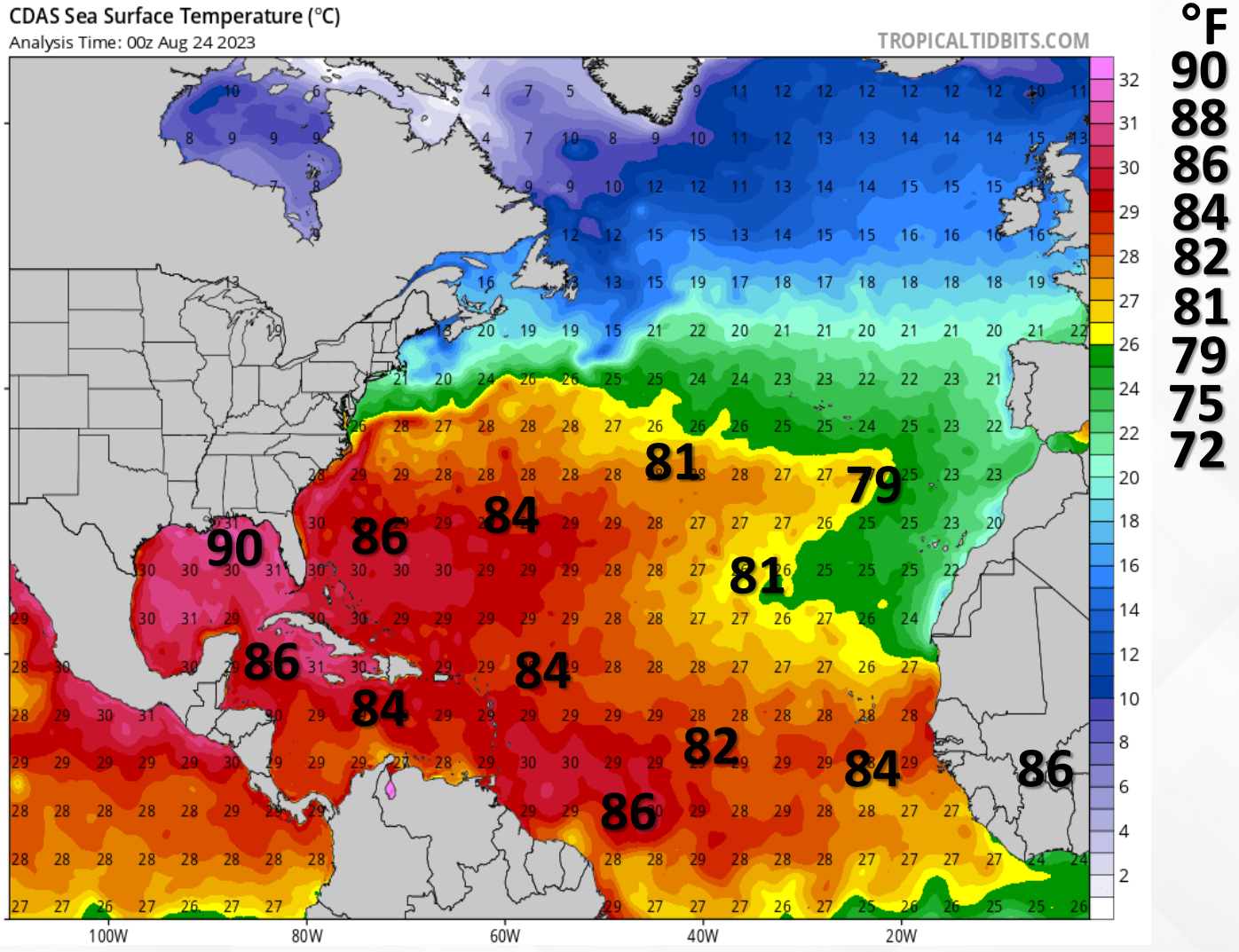
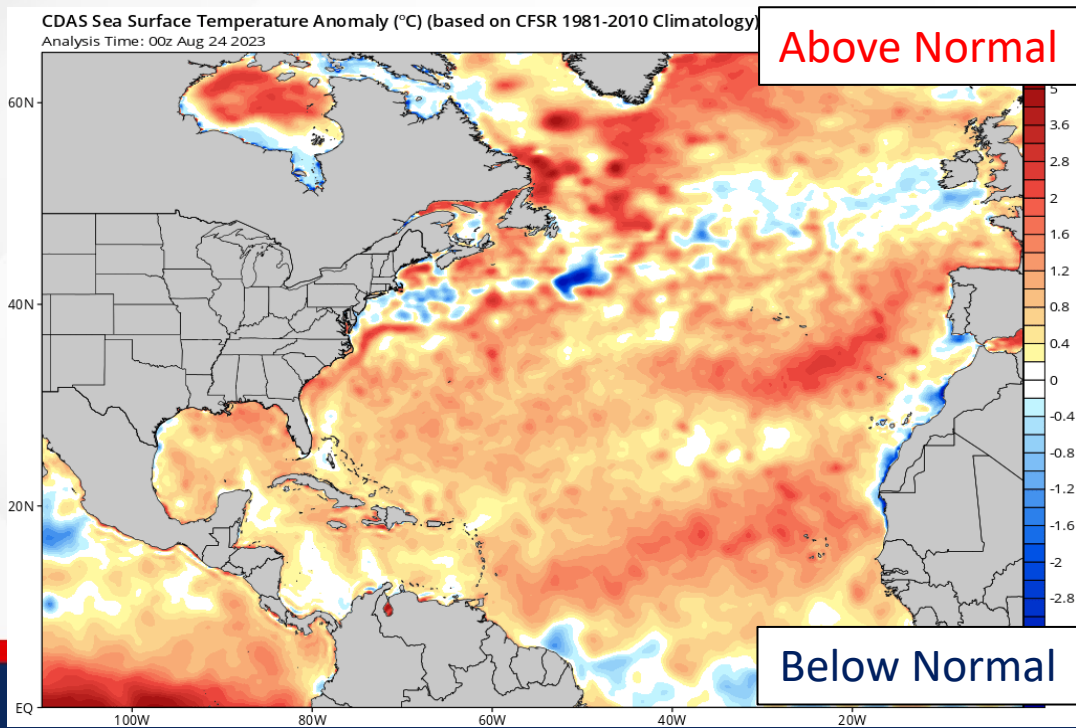




# Sea Surface Temperatures & Anomalies

Is the ocean favorable for the system?

Temperatures across the Atlantic Basin are very supportive of tropical cyclone development. Waters across the tropical Atlantic are running 0.5-1.5 degrees above normal, with temperatures in the Gulf of Mexico have reached 1-2 degrees above normal for this time of year.





# Summary

## **Tropical Storm Franklin:**

- As of 5:00 AM EDT, Tropical Storm Franklin is located about 55 miles east-northeast of Grand Turk Island, and is moving northward at 13 mph.
- A turn to the northeast and then east-northeast with a decrease in forward speed is forecast during the next couple of days. On the forecast track, the center of Franklin will continue to move farther away from the Dominican Republic and over the southwestern Atlantic into the weekend.
- Maximum sustained winds are near 50 mph. Gradual strengthening is forecast, and Franklin is expected to become a hurricane in a couple of days.
- *Franklin poses no direct threat to Florida; however, and elevated risk of rip currents and increased heights of breakers in the surf zone will be possible along Atlantic Coast beaches.*

## **Invest 92L (Eastern Tropical Atlantic):**

- Disorganized showers and thunderstorms continue in association with an area of low pressure located several hundred miles west of the Cabo Verde Islands.
- Despite marginal environmental conditions, slow development is possible, and a tropical depression could form by early next week while the system moves west-northwestward to northwestward into the central subtropical Atlantic.
- There is a low (20%) chance of development over the next 48 hours, and a medium (40%) chance of development over the next 7 days. *Invest 92L poses no threat to Florida.*

## **Remnants of Emily (Central Tropical Atlantic):**

- An area of low pressure located more than 1,000 miles east-southeast of Bermuda (the remnants of former Tropical Storm Emily) continues to produce a large but elongated area of disorganized showers and thunderstorms.
- Upper-level winds are generally conducive for development today, and this system is likely to regenerate into a tropical storm over the next couple of days as it moves northward over the subtropical central Atlantic. By this weekend, the system is anticipated to merge with a frontal boundary north of the Gulf Stream.
- There is a high (70%) chance of development over the next 48 hours, and a high (70%) chance of development over the next 7 days. *This system poses no threat to Florida.*

## **Northwestern Caribbean Sea:**

- A broad area of low pressure, originating along the East Pacific Coast of Central America, is forecast to move into the northwestern Caribbean Sea by this weekend.
- Some gradual development of this system is possible thereafter into early next week, and a tropical depression could while it moves slowly northward, entering the eastern Gulf of Mexico.
- There is a low (10%) chance of development over the next 48 hours, and a medium (50%) chance of development over the next 7 days.
- *This system poses no immediate threat to Florida; however, it should be monitored as it emerges into the northwestern Caribbean Sea this weekend.*

## **Florida Outlook:**

- Hot and humid conditions persist across the Sunshine State, with Heat Advisories in effect for the western Panhandle this afternoon.
- Isolated to scattered showers and embedded thunderstorms possible over the southern Peninsula through the afternoon hours (40-60% chance of rain).
- An elevated rip current risk will linger along all Panhandle and Atlantic Coast beaches today, locally higher along the Northeast Florida Coast.
- The next name on this list is **Idalia**.

The next briefing package will be issued on Friday. For the latest information, please visit the [National Hurricane Center website](#).





# Tropical Update



Created by:

**Caitlyn Gillespie, Deputy State Meteorologist**

**Caitlyn.Gillespie@em.myflorida.com**

**State Meteorological Support Unit**

**Florida Division of Emergency Management**

Users wishing to subscribe (approval pending) to this distribution list, register at:

[https://public.govdelivery.com/accounts/FLDEM/subscriber/new?topic\\_id=SERT\\_Met\\_Tropics](https://public.govdelivery.com/accounts/FLDEM/subscriber/new?topic_id=SERT_Met_Tropics).

Other reports available for subscription are available at:

<https://public.govdelivery.com/accounts/FLDEM/subscriber/new?preferences=true>