



Tropical Update



11:00 AM EDT

Tuesday, August 22, 2023

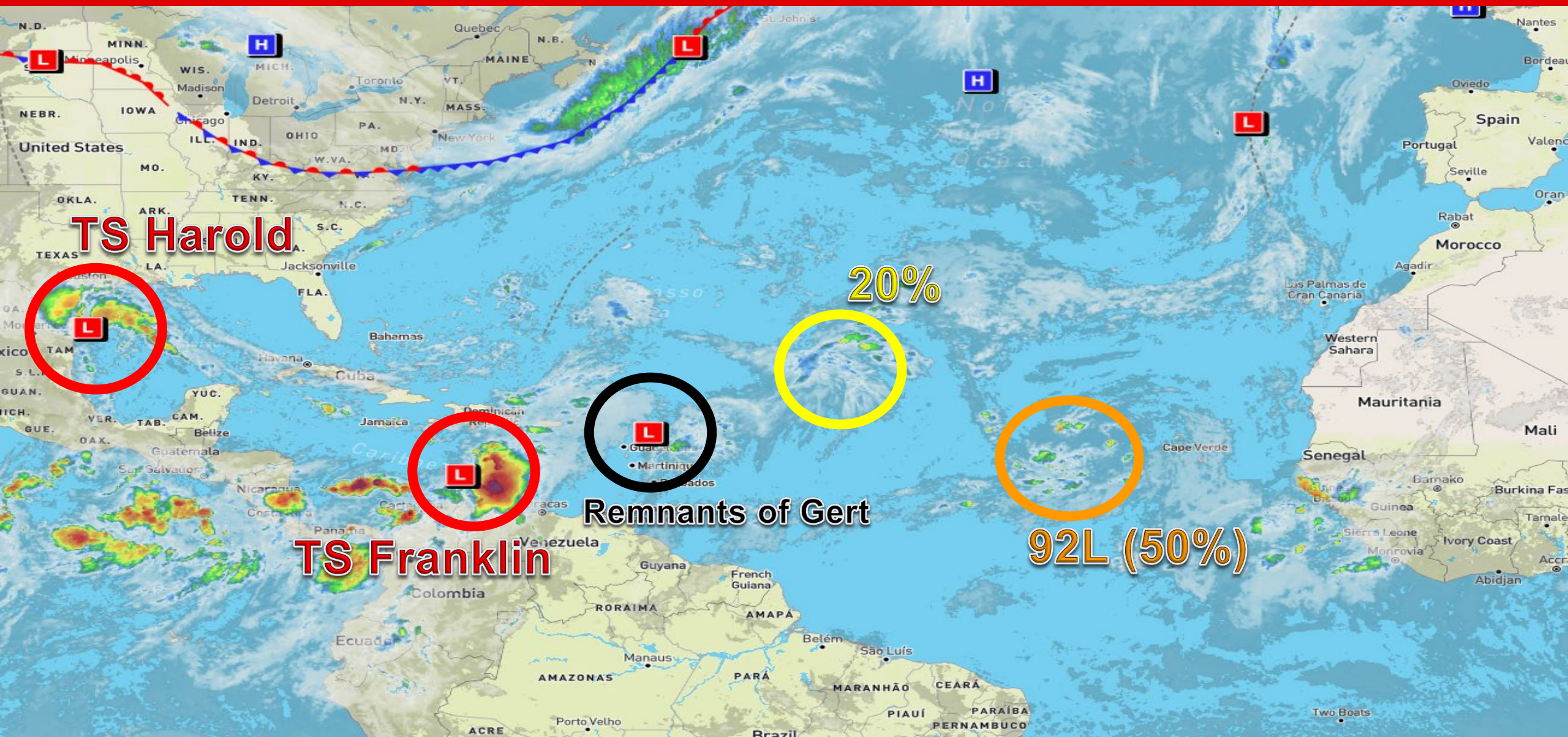
**Tropical Storm Franklin, Tropical Storm Harold,
Invest 92L (50%), &
Central Tropical Atlantic (20%)**

This update is intended for government and emergency response officials, and is provided for informational and situational awareness purposes only. Forecast conditions are subject to change based on a variety of environmental factors. For additional information, or for any life safety concerns with an active weather event please contact your County Emergency Management or Public Safety Office, local National Weather Service forecast office, or visit the National Hurricane Center website at www.hurricanes.gov.



Atlantic Basin Satellite Image

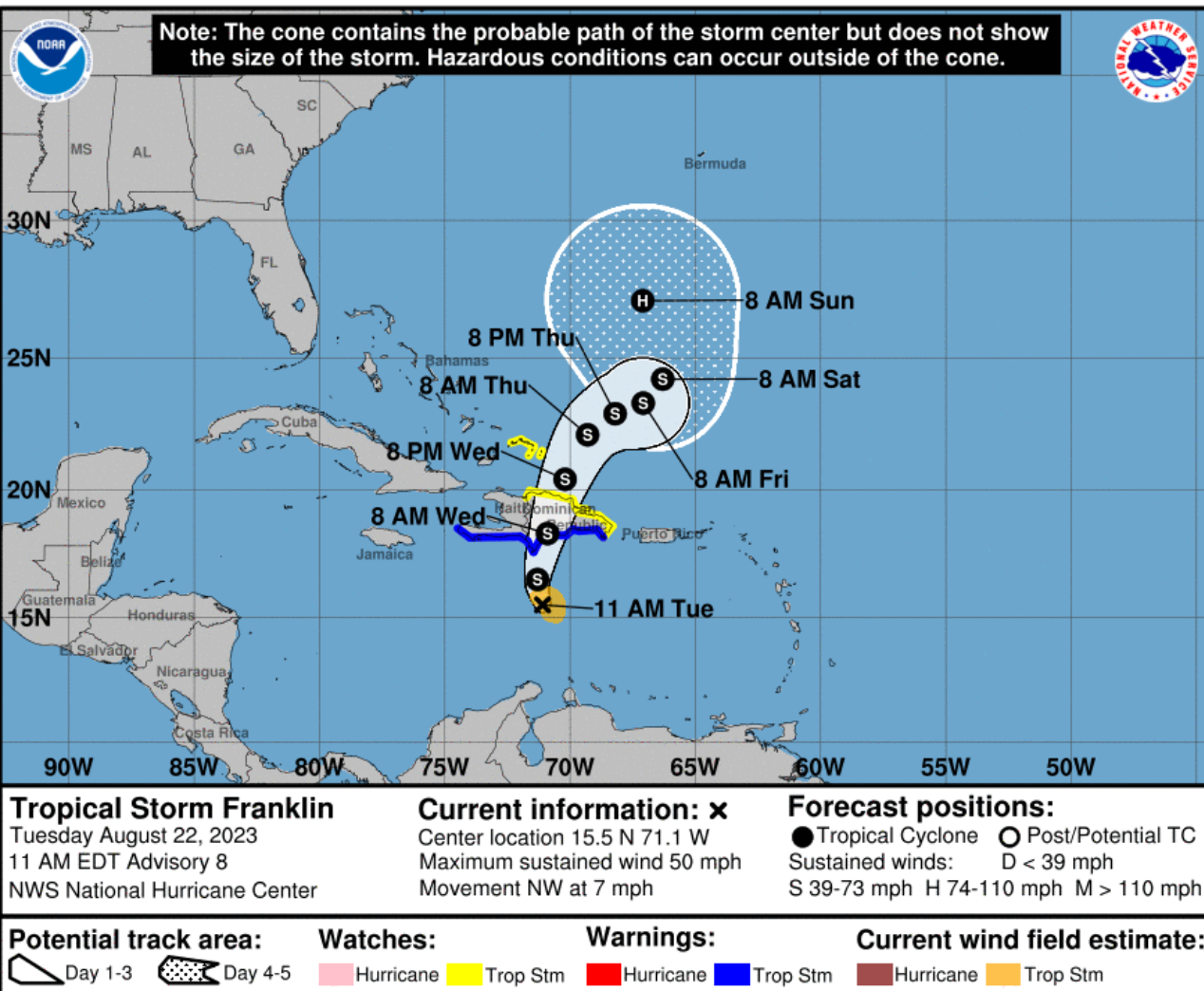
Chance of development: None Low Medium High





Forecast Cone

Tropical Storm Franklin ([LINK](#))



- **Location:** 220 miles SSW of Santo Domingo
- **Maximum Sustained Winds:** 50 mph
- **Current Movement:** NW at 7 mph
- **FL Watches/Warnings:** None

A turn toward the north is expected later today, followed by a turn toward the northeast by Thursday. On the forecast track, the center of Franklin is expected to approach the southern coast of Hispaniola today, cross the island on Wednesday, and then emerge over the southwestern Atlantic waters late Wednesday. Maximum sustained winds are near 50 mph, and little change in strength is forecast before Franklin reaches Hispaniola. Some weakening is likely while the storm moves across the mountainous island terrain.

Franklin poses no direct threat to Florida.

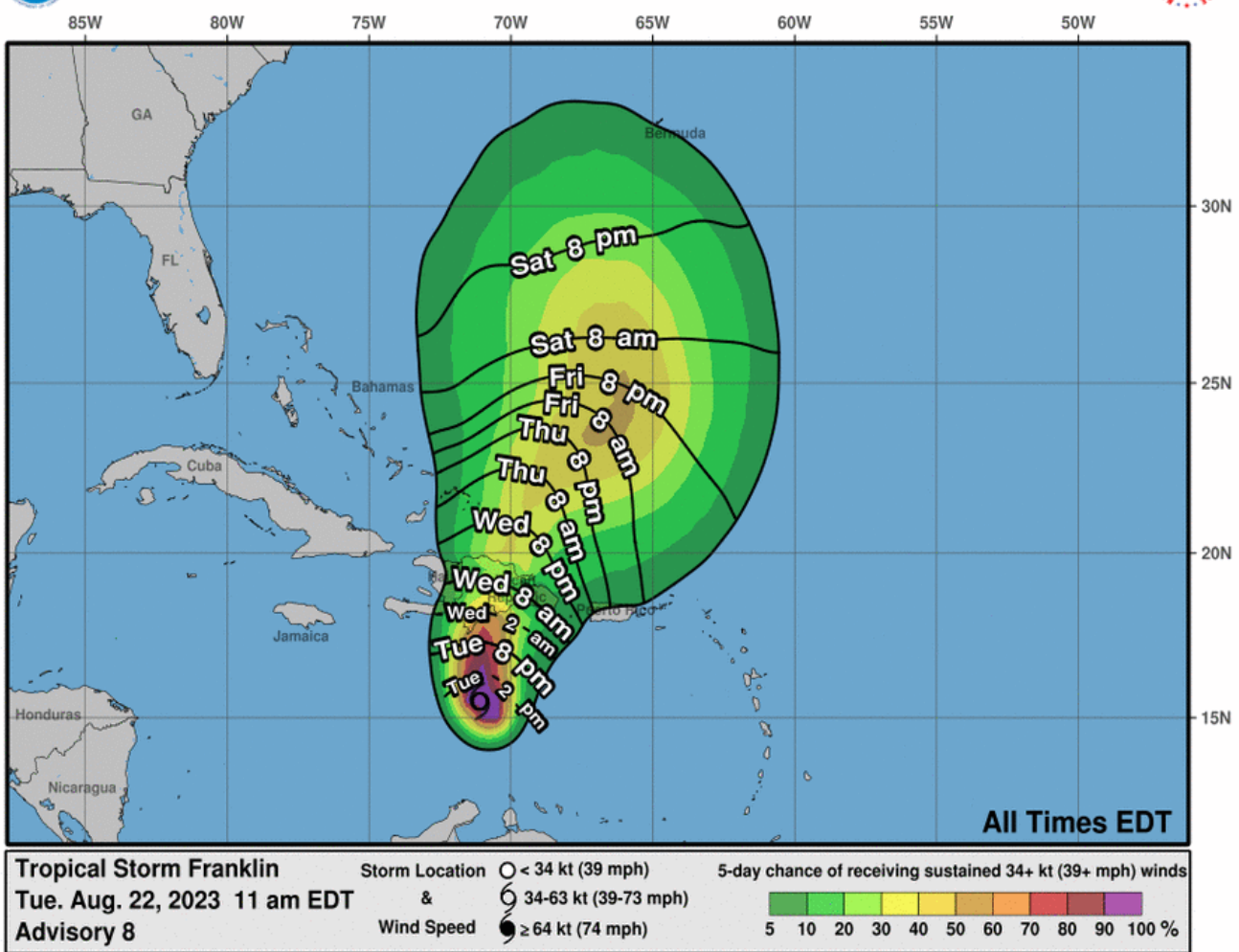


Wind Probabilities & Satellite Imagery

Tropical Storm Franklin ([LINK](#))

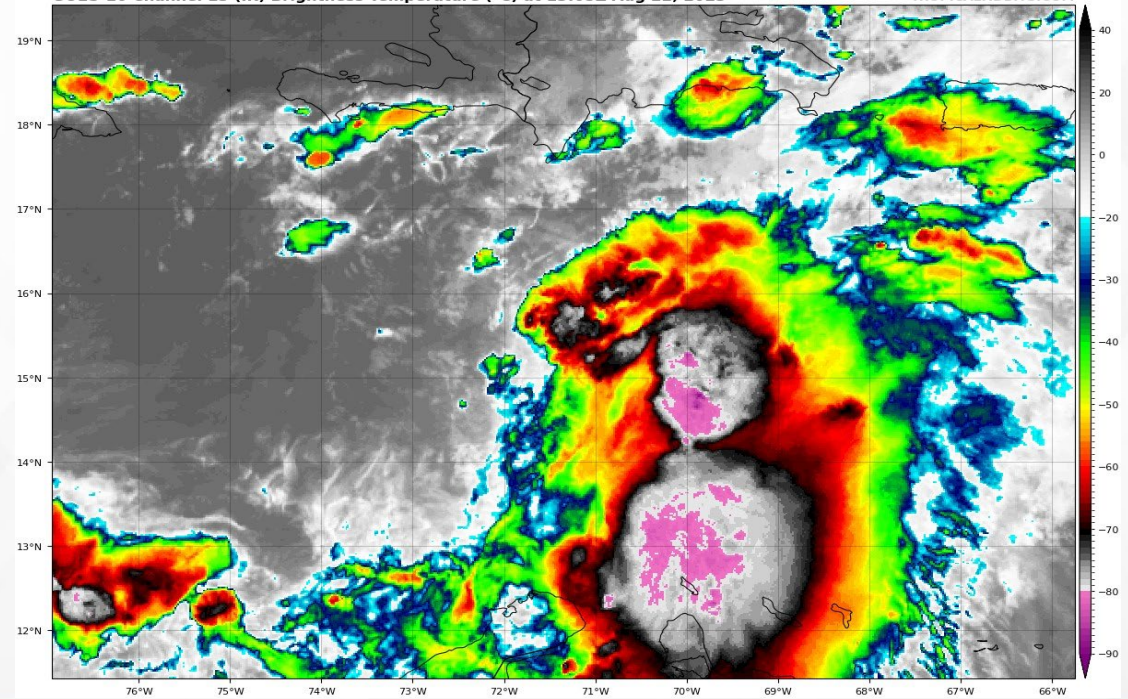


Most Likely Arrival Time of Tropical-Storm-Force Winds



Although shower and thunderstorm activity increased overnight in areal extent, Franklin remains a somewhat disorganized tropical system, with no organized center of circulation. Franklin is expected to bring tropical storm conditions to portions of the Dominican Republic and Haiti beginning today. Heavy rainfall is expected across Puerto Rico and Hispaniola through the middle of the week. Tropical storm conditions are not expected across the continental United States.

GOES-16 Channel 13 (IR) Brightness Temperature (°C) at 13:05Z Aug 22, 2023



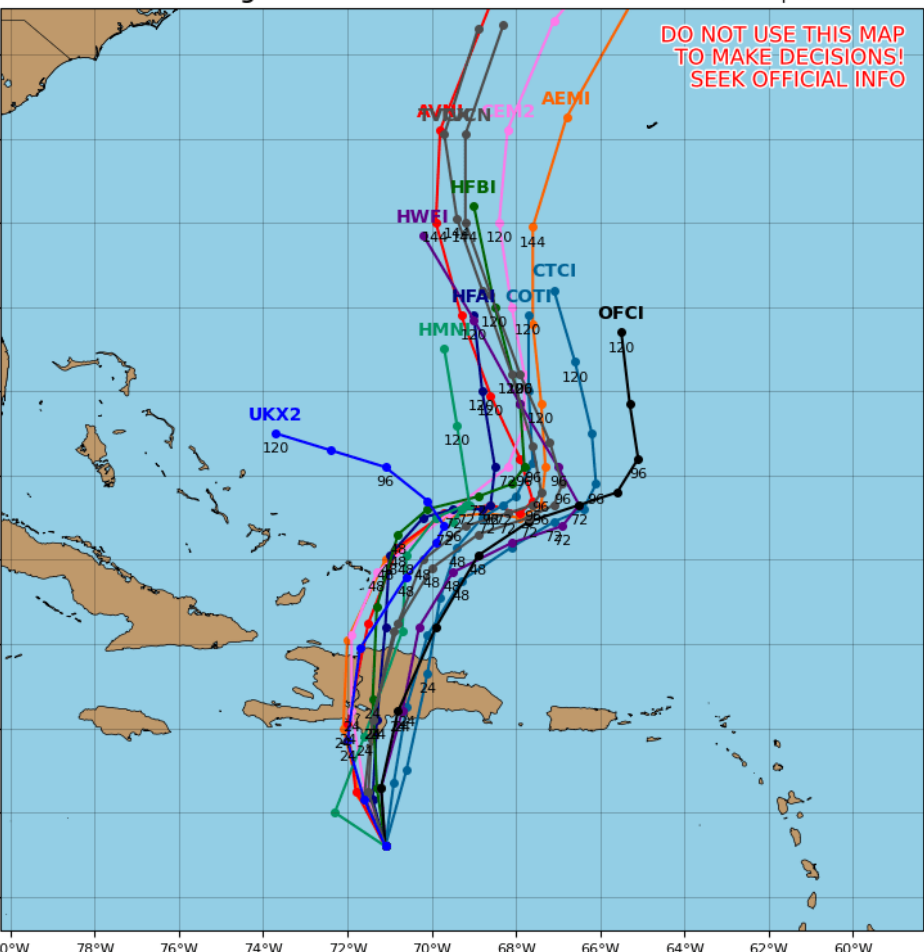


Model Forecasts – Next 5 Days

Tropical Storm Franklin

Tropical Storm FRANKLIN Model Track Guidance

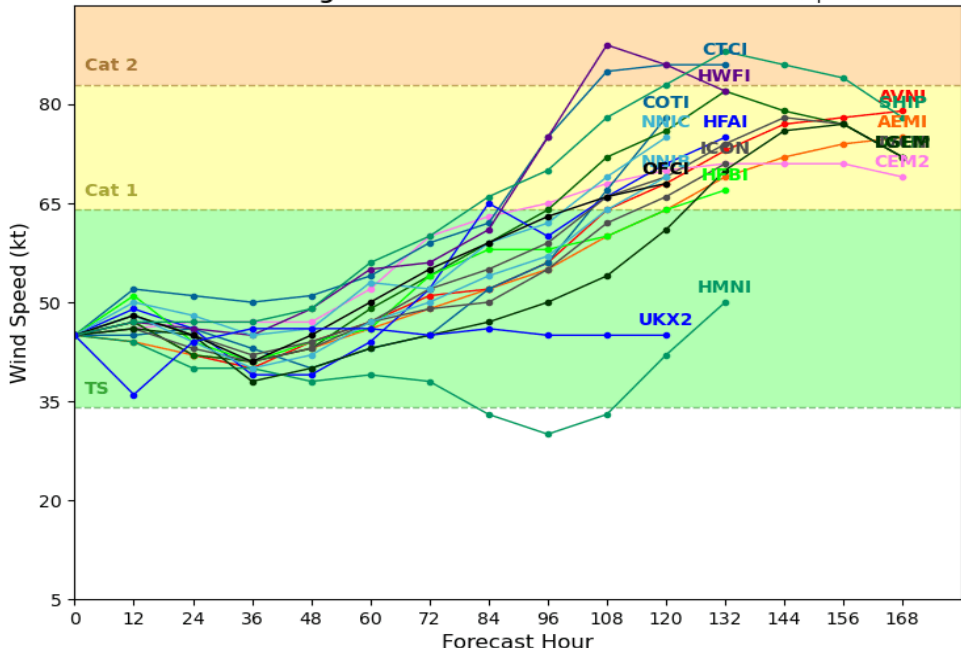
Initialized at 12z Aug 22 2023 Levi Cowan - tropicaltidbits.com



Persistent southeast flow from an upper-level disturbance positioned over the mid-Atlantic (northwest of Franklin) is producing moderate wind shear over the system. Computer model guidance indicates that Franklin will remain in an area of strong upper-level winds, preventing any additional intensification until after the system traverses the mountainous terrain of Hispaniola. There is decent agreement that Franklin may strengthen over the southwestern Atlantic during the 3-5-day timeframe. An area of subtropical high pressure will look to build east of Franklin, inducing a northward to northeastward motion over the next 24-72 hours. Computer models are in good agreement that Franklin is then expected to gradually turn northward at the end of the forecast period.

Tropical Storm FRANKLIN Model Intensity Guidance

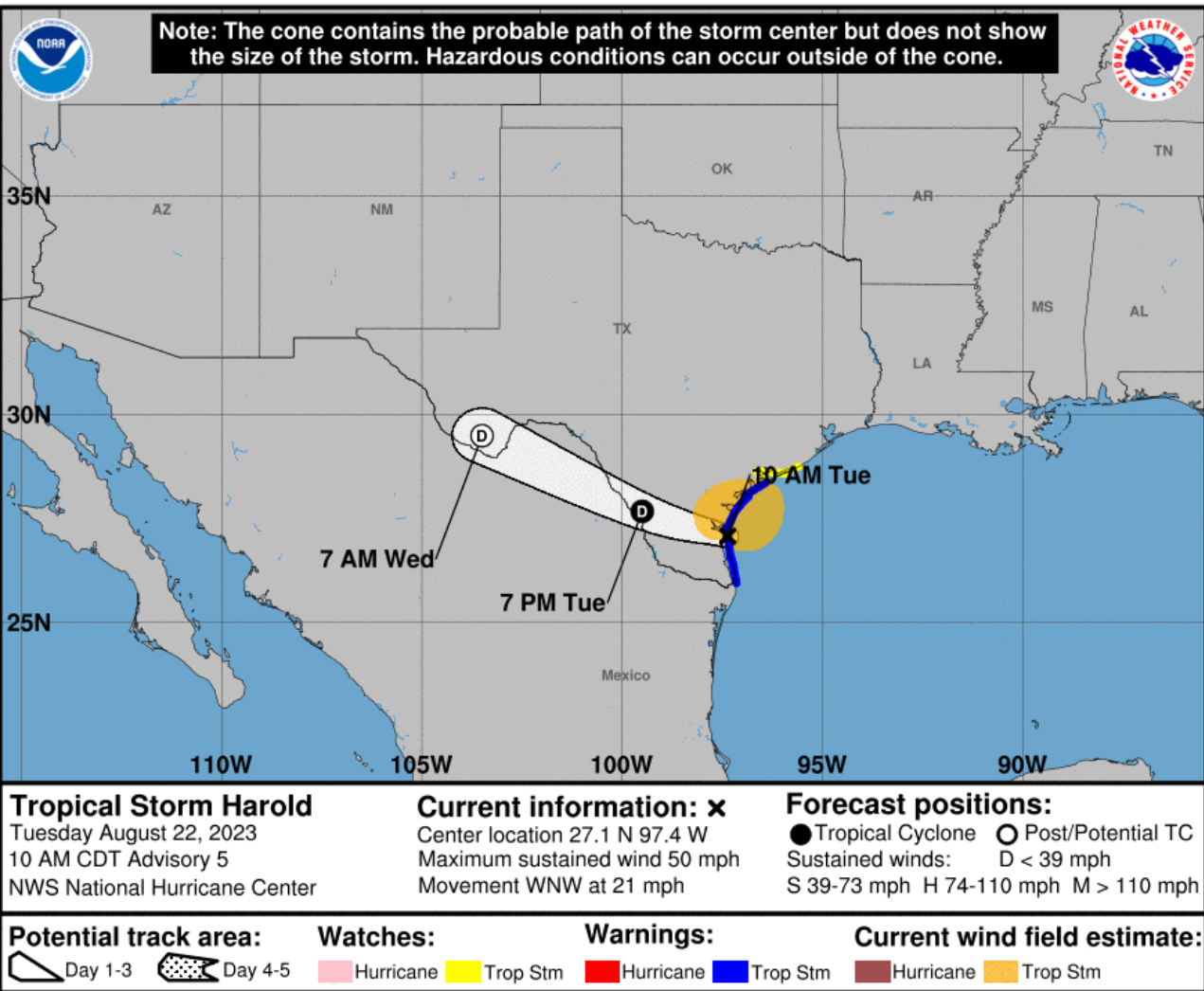
Initialized at 12z Aug 22 2023 Levi Cowan - tropicaltidbits.com





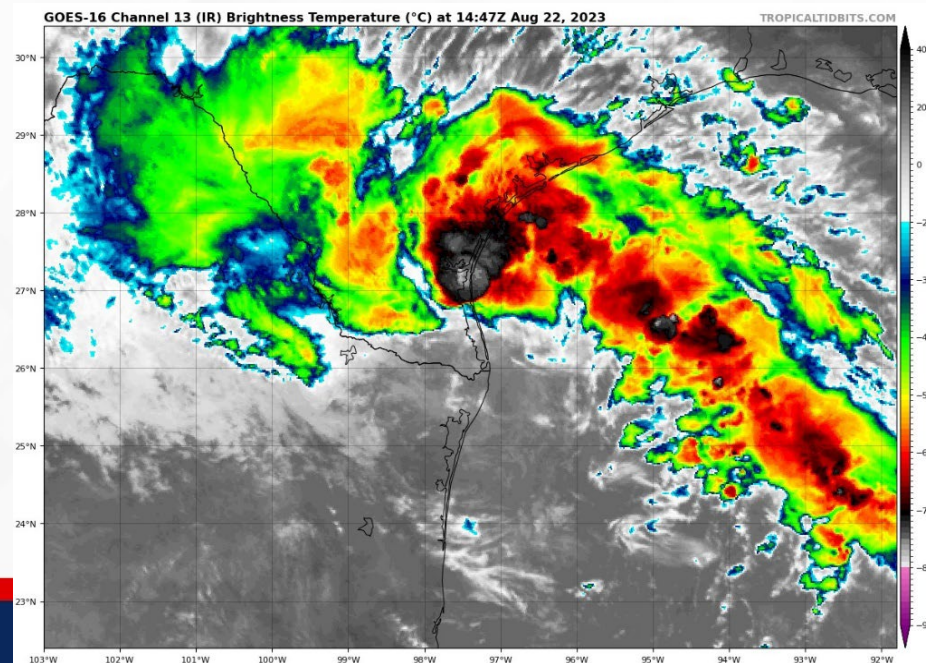
Forecast Cone

Tropical Storm Harold ([LINK](#))



- **Location:** 35 miles N of Port Mansfield, Texas
- **Maximum Sustained Winds:** 50 mph
- **Current Movement:** WNW at 21 mph
- **FL Watches/Warnings:** None

Radar from Brownsville, Texas indicate that the center of Harold made landfall on Padre Island at 10:00 AM CDT. The system's quick west-northwest motion is expected to continue, taking Harold inland over southern Texas and northern Mexico. Maximum sustained winds are near 50 mph, and steady weakening is forecast. Harold is expected to become a tropical depression later today. *Harold poses no threat to Florida.*





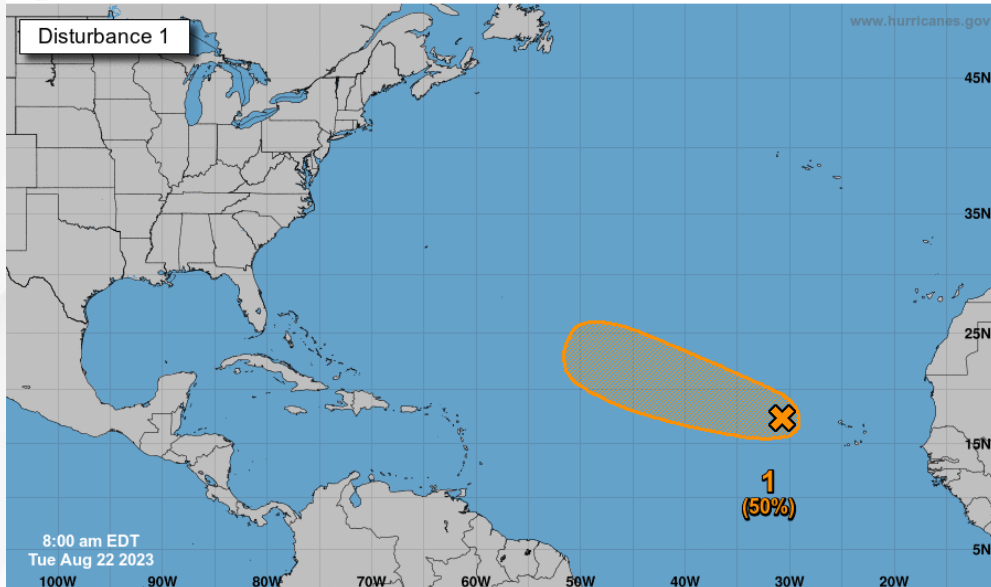
Tropical Weather Outlook

Disturbance 1 – Invest 92L ([LINK](#))



Seven-Day Graphical Tropical Weather Outlook

National Hurricane Center Miami, Florida



Disorganized showers and thunderstorms, located a few hundred miles west of the Cabo Verde Islands, are associated with a tropical wave. Environmental conditions appear generally conducive for gradual development of this system, and a tropical depression could form later this week over the weekend while it moves west-northwestward to northwestward across the eastern and central Atlantic.

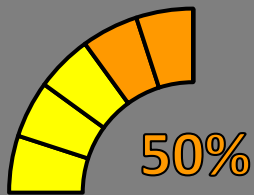
Invest 92L poses no threat to Florida, at this time.

* Formation chance through 48 hours...**low...20%.**

* Formation chance through 7 days...**medium...50%.**



48 Hour Formation



5 Day Formation



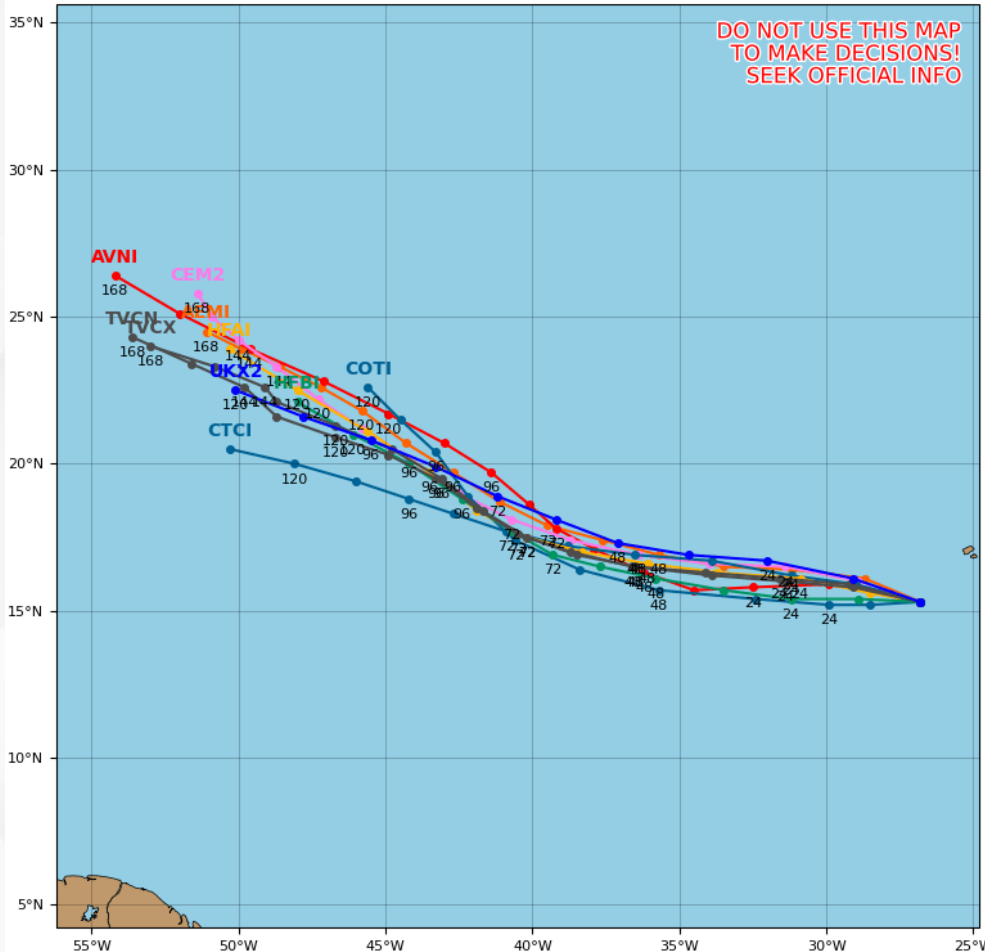
Model Forecasts – Next 5 Days

Invest 92L

Invest 92L Model Track Guidance

Initialized at 12z Aug 21 2023

Levi Cowan - tropicaltidbits.com

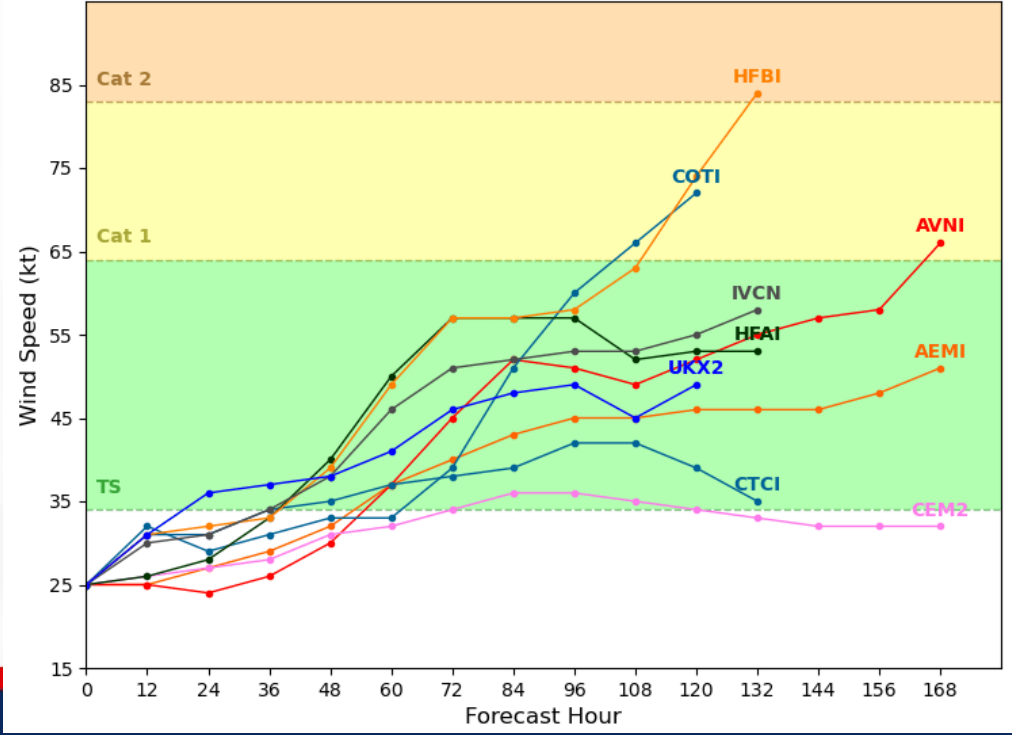


Computer models are in good agreement that Invest 92L will continue to move westward to west-northwestward over the next 5-7 days over the open eastern Atlantic. While there remains a bit of uncertainty regarding the extent of Invest 92L's strengthening, the system could become a tropical depression or tropical storm as early this weekend.

Invest 92L Model Intensity Guidance

Initialized at 12z Aug 21 2023

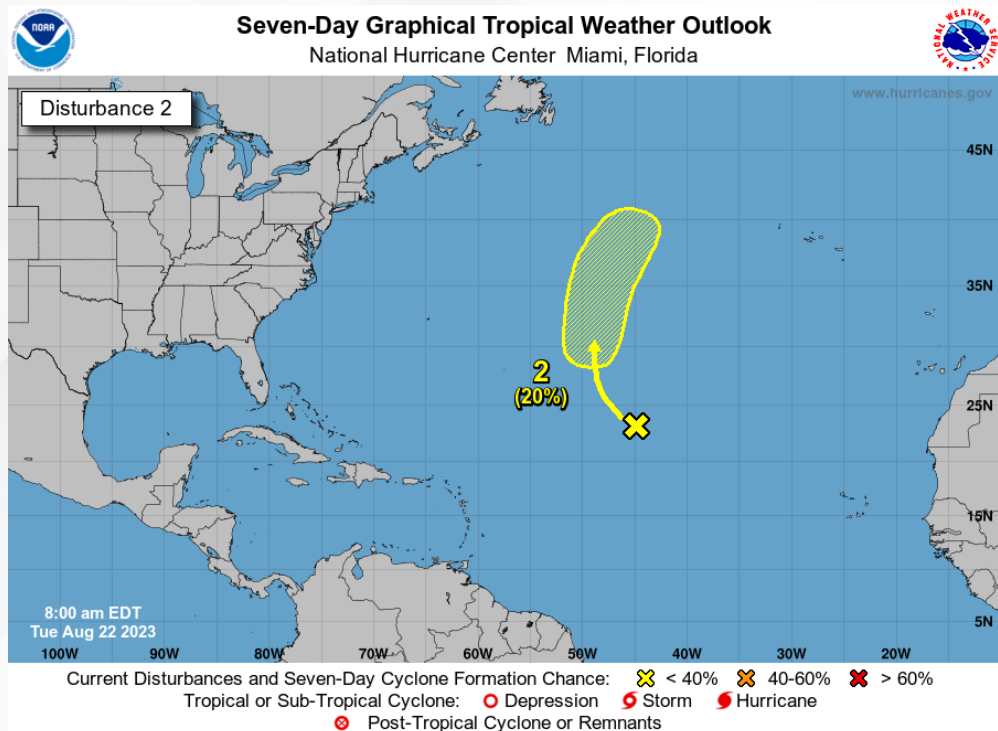
Levi Cowan - tropicaltidbits.com





Tropical Weather Outlook

Disturbance 2 – Central Tropical Atlantic ([LINK](#))



The remnants of former Tropical Storm Emily are located over the central tropical Atlantic, several hundred miles east-northeast of the Leeward Islands. Although development is unlikely in the next day or so due to unfavorable environmental conditions, some development is possible late this week or this weekend when the system moves northward over the subtropical central Atlantic.

This system poses no threat to Florida.

* Formation chance through 48 hours...**low...near 0%.**

* Formation chance through 7 days...**low...20%.**

Near 0%

48 Hour Formation



20%

5 Day Formation



Steering Currents

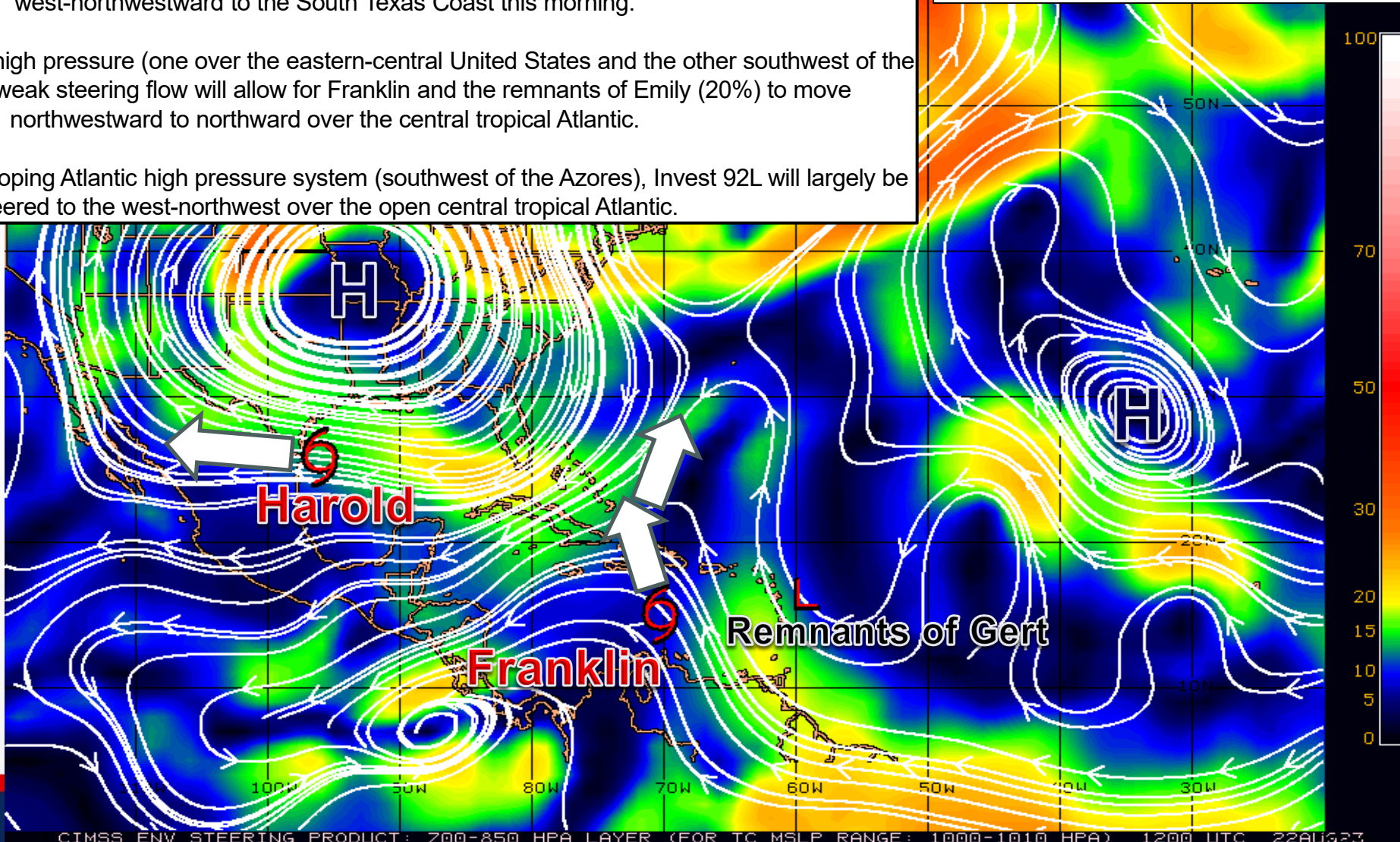
What is Moving the System?

Color denotes the movement speed through the atmosphere and thin white lines denote direction. Tightly clustered white lines represent faster movement as well.

A strong area of high pressure located over the eastern-central United States will continue to quickly usher Harold west-northwestward to the South Texas Coast this morning.

In between two areas of high pressure (one over the eastern-central United States and the other southwest of the Azores), generally weak steering flow will allow for Franklin and the remnants of Emily (20%) to move northwestward to northward over the central tropical Atlantic.

To the south of the developing Atlantic high pressure system (southwest of the Azores), Invest 92L will largely be steered to the west-northwest over the open central tropical Atlantic.



Fast Moving Storm

Fast Moving Storm

Typical Moving Storm

Slow Moving Storm

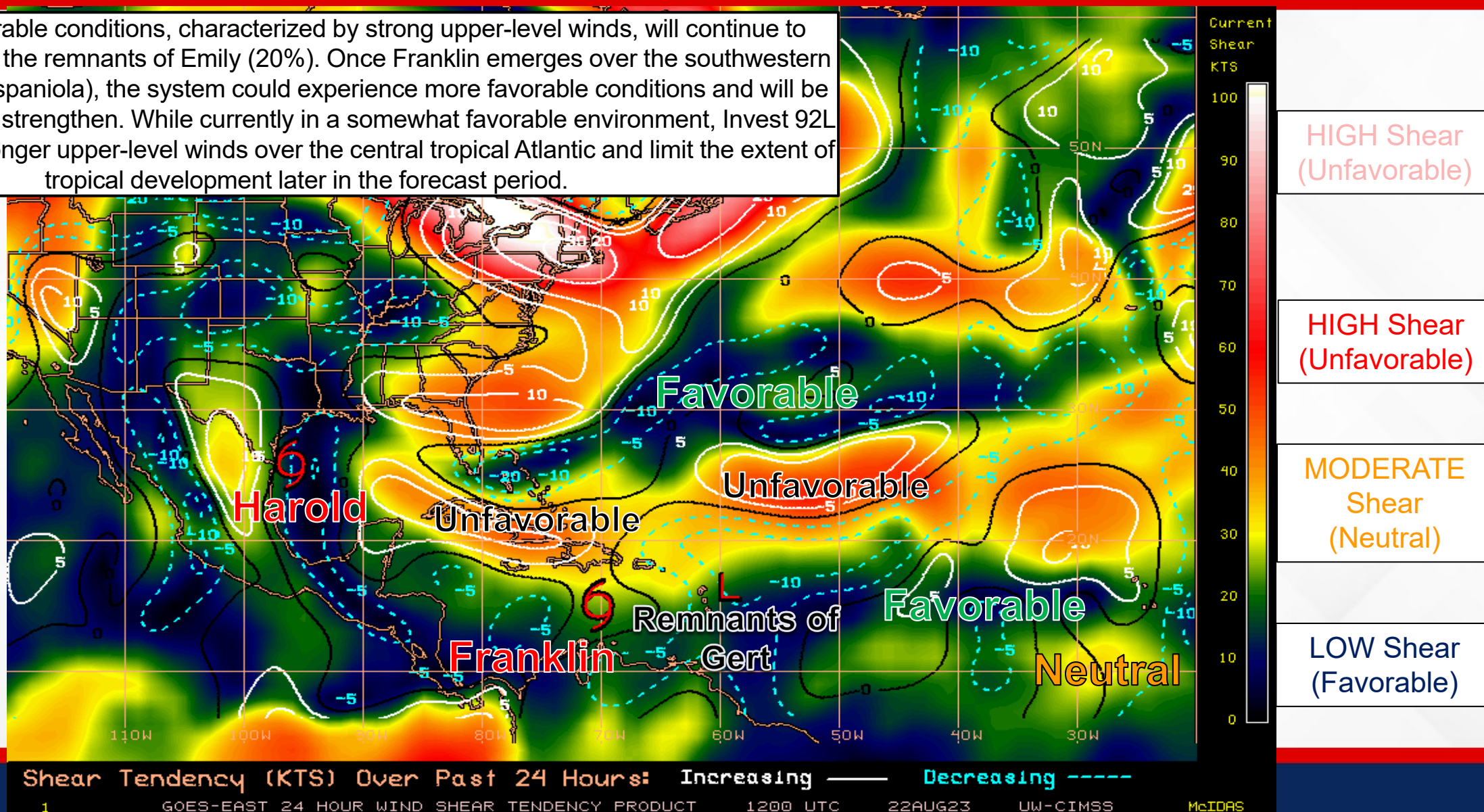


Wind Shear

Is the environment favorable for the system?

Color denotes the amount of wind shear and the lines denote how it have changed over the last 24 hours (dotted lines show decreasing shear and solid lines show increasing).

Generally unfavorable conditions, characterized by strong upper-level winds, will continue to impact Franklin and the remnants of Emily (20%). Once Franklin emerges over the southwestern Atlantic (north of Hispaniola), the system could experience more favorable conditions and will be allowed to gradually strengthen. While currently in a somewhat favorable environment, Invest 92L could encounter stronger upper-level winds over the central tropical Atlantic and limit the extent of tropical development later in the forecast period.



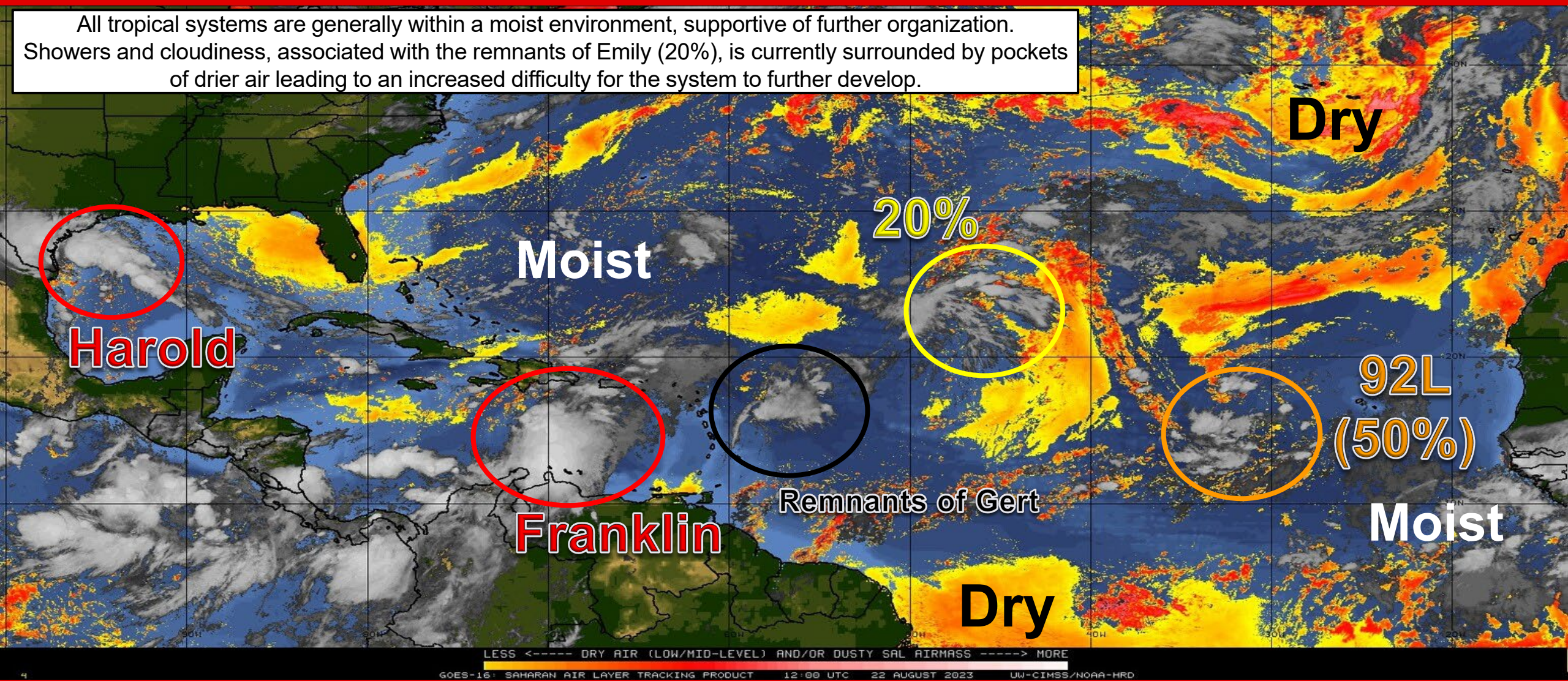


Dry Air & Saharan Dust

Is the environment favorable for the system?

Color denotes concentration of Saharan Dust or dry, stable air.

All tropical systems are generally within a moist environment, supportive of further organization. Showers and cloudiness, associated with the remnants of Emily (20%), is currently surrounded by pockets of drier air leading to an increased difficulty for the system to further develop.





Elevated Rip Current Risk

Panhandle & East Coast Beaches



Easterly to east-northeasterly flow will maintain a **moderate to high risk of rip currents** along all Panhandle and Atlantic Coast beaches today. Wave heights will be on the downward trend through the afternoon hours; however, isolated breakers in the surf zone could reach **3-5'** along portions of the Treasure Coast.



Summary

Tropical Storm Franklin:

- As of 11:00 AM EDT, Tropical Storm Franklin is located about 220 miles south-southwest of Santo Domingo, Dominican Republic, and is moving northwestward at 7 mph.
- A turn toward the north is expected later today, followed by a turn toward the northeast by Thursday. On the forecast track, Franklin is expected to approach the southern coast of Hispaniola today, cross the island on Wednesday, and then emerge over the southwestern Atlantic waters late Wednesday.
- Maximum sustained winds are near 50 mph, and little change in strength is forecast before Franklin reaches Hispaniola. Some weakening is likely while the storm moves over the mountainous terrain of the island. *Franklin poses no direct threat to Florida.*

Tropical Storm Harold:

- Radar from Brownsville, Texas indicate that the center of Harold (formerly PTC #9) has made landfall on Padre Island around 10:00 AM CDT.
- Harold is currently 35 miles north of Port Mansfield, Texas, and is moving toward the west-northwest at 21 mph. This quick motion is expected to continue, taking the system inland over southern Texas and northern Mexico.
- Maximum sustained winds are near 50 mph, and steady weakening is forecast.
- Harold is expected to become a tropical depression later today, and *this system poses no threat to Florida.*

Invest 92L (Eastern Tropical Atlantic):

- Disorganized showers and thunderstorms, located a few hundred miles west of the Cabo Verde Islands, are associated with a tropical wave.
- Environmental conditions appear generally conducive for gradual development of this system, and a tropical depression could form later this week over the weekend while it moves west-northwestward to northwestward across the eastern and central Atlantic.
- There is a low (20%) chance of development over the next 48 hours, and a medium (50%) chance of development over the next 7 days. *Invest 92L poses no threat to Florida, at this time.*

Central Tropical Atlantic:

- The remnants of former Tropical Storm Emily are located over the central tropical Atlantic, several hundred miles east-northeast of the Leeward Islands.
- Although development is unlikely in the next day or so due to unfavorable environmental conditions, some development is possible late this week or this weekend when the system moves northward over the subtropical central Atlantic.
- There is a low (near 0%) chance of development over the next 48 hours, and a low (20%) chance of development over the next 7 days. *This system poses no threat to Florida.*

Florida Outlook:

- Heat Advisories in effect for portions of the Florida Panhandle this afternoon, with Excessive Heat Watches returning Wednesday (heat indices reaching 108-112-degrees).
- Only spotty to isolated showers and thunderstorms expected across the state, with locally higher chance of rain residing over the southern Peninsula (15-35% chance of rain).
- Lingering elevated wave heights and onshore flow will yield a moderate to high risk of rip currents along all Florida Panhandle and East Coast beaches today.
- The next name on this list is Idalia.

The next briefing package will be issued on Wednesday. For the latest information, please visit the National Hurricane Center website.



Tropical Update



Created by:

Caitlyn Gillespie, Deputy State Meteorologist

Caitlyn.Gillespie@em.myflorida.com

State Meteorological Support Unit

Florida Division of Emergency Management

Users wishing to subscribe (approval pending) to this distribution list, register at:

https://public.govdelivery.com/accounts/FLDEM/subscriber/new?topic_id=SERT_Met_Tropics.

Other reports available for subscription are available at:

<https://public.govdelivery.com/accounts/FLDEM/subscriber/new?preferences=true>