



Tropical Update



11:00 AM EDT

Monday, August 21, 2023

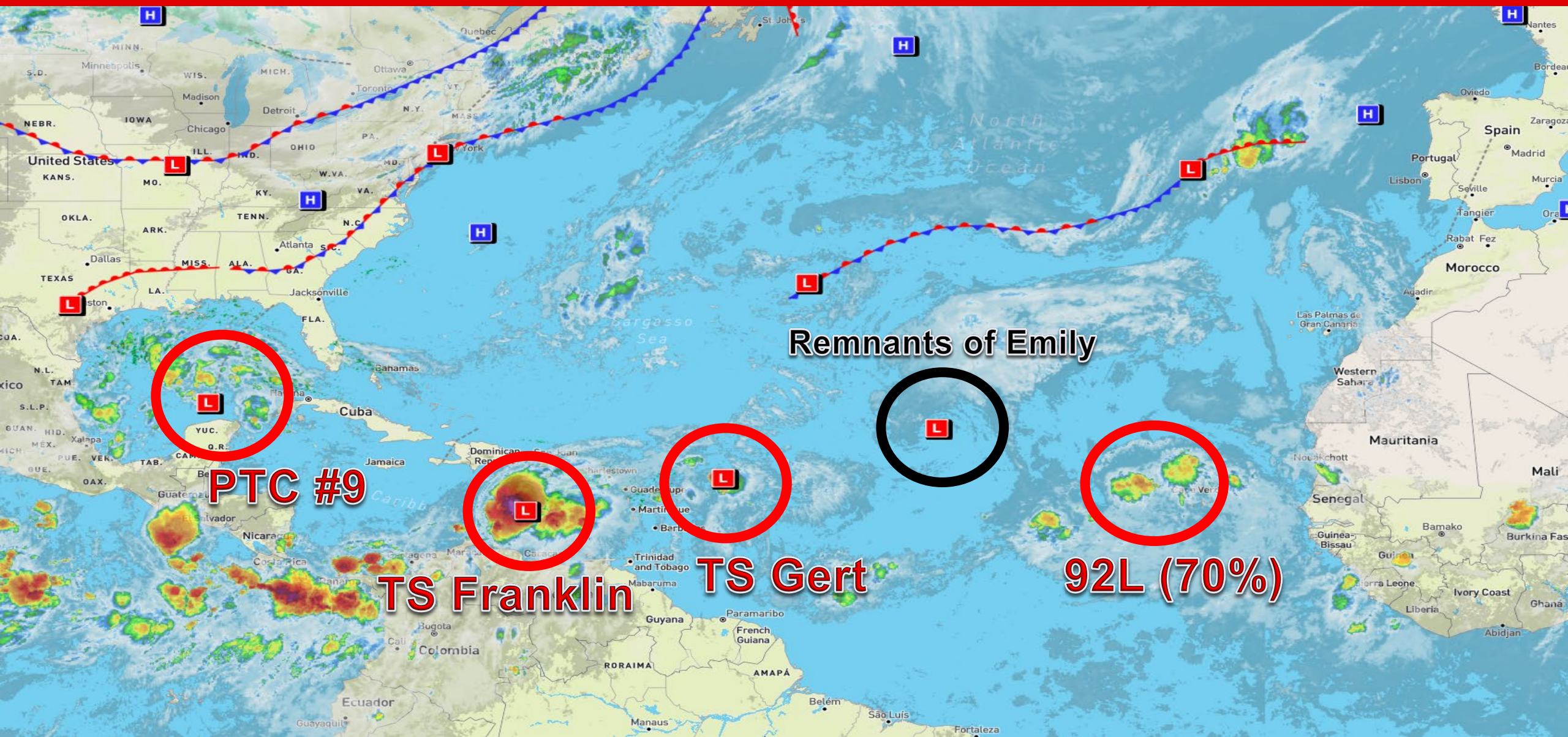
Tropical Storm Franklin, Tropical Storm Gert, Potential Tropical Cyclone Nine & Invest 92L (70%)

This update is intended for government and emergency response officials, and is provided for informational and situational awareness purposes only. Forecast conditions are subject to change based on a variety of environmental factors. For additional information, or for any life safety concerns with an active weather event please contact your County Emergency Management or Public Safety Office, local National Weather Service forecast office, or visit the National Hurricane Center website at www.hurricanes.gov.



Atlantic Basin Satellite Image

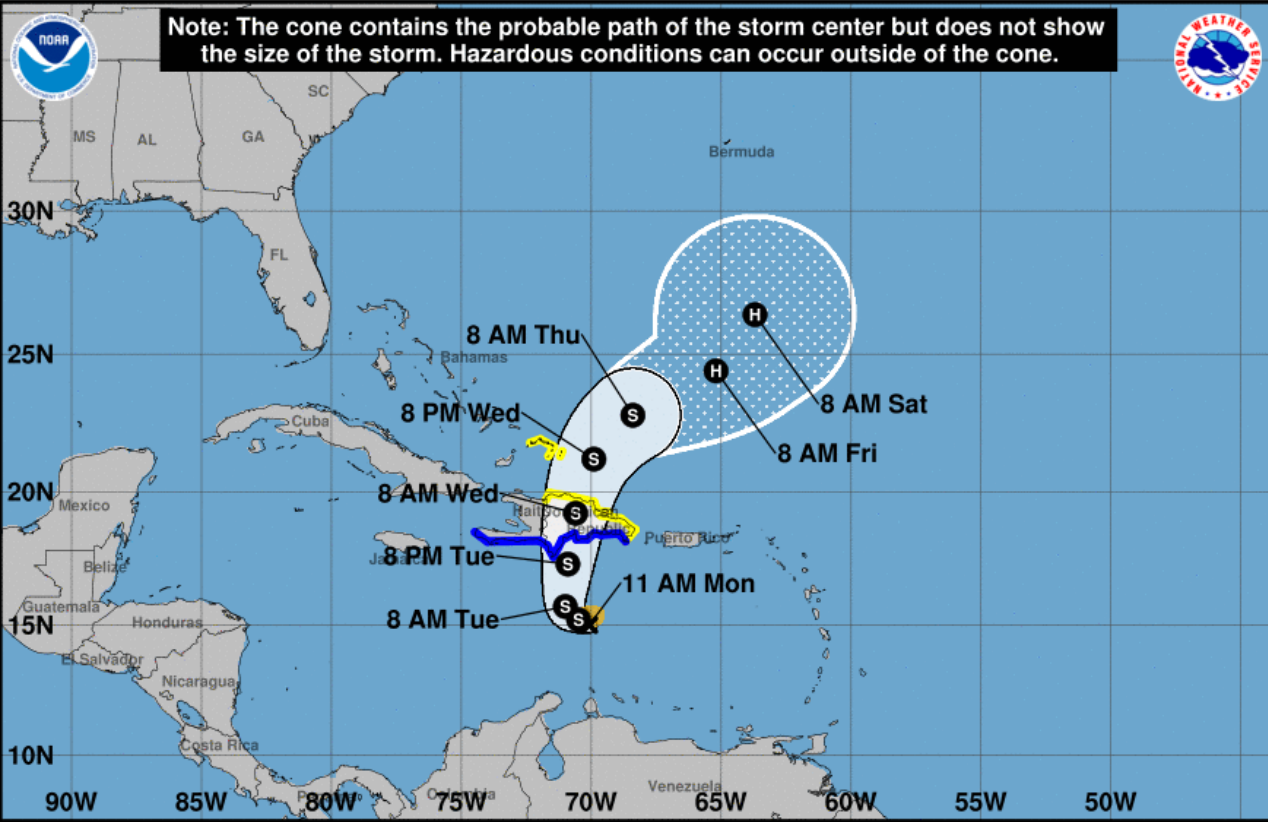
Chance of development: None Low Medium High





Forecast Cone

Tropical Storm Franklin ([LINK](#))



Tropical Storm Franklin Monday August 21, 2023 11 AM EDT Advisory 4 NWS National Hurricane Center	Current information: x Center location 15.0 N 70.1 W Maximum sustained wind 50 mph Movement W at 6 mph	Forecast positions: ● Tropical Cyclone ○ Post/Potential TC Sustained winds: D < 39 mph S 39-73 mph H 74-110 mph M > 110 mph
Potential track area: Day 1-3 Day 4-5	Watches: Hurricane Trop Stm	Warnings: Hurricane Trop Stm
Current wind field estimate: Hurricane Trop Stm		

- **Location:** 240 miles S of Santo Domingo, Dominican Republic
- **Maximum Sustained Winds:** 50 mph
- **Current Movement:** W at 6 mph
- **FL Watches/Warnings:** None

As of 11:00 AM EDT, Tropical Storm Franklin is moving toward the west near 6 mph, and a slow westward motion is expected through this afternoon. A sharp turn to the north is expected tonight or early Tuesday, and a generally northward motion is expected later Tuesday. Maximum sustained winds are near 50 mph, and some strengthening is forecast before Franklin reaches Hispaniola.

Franklin poses no direct threat to Florida.

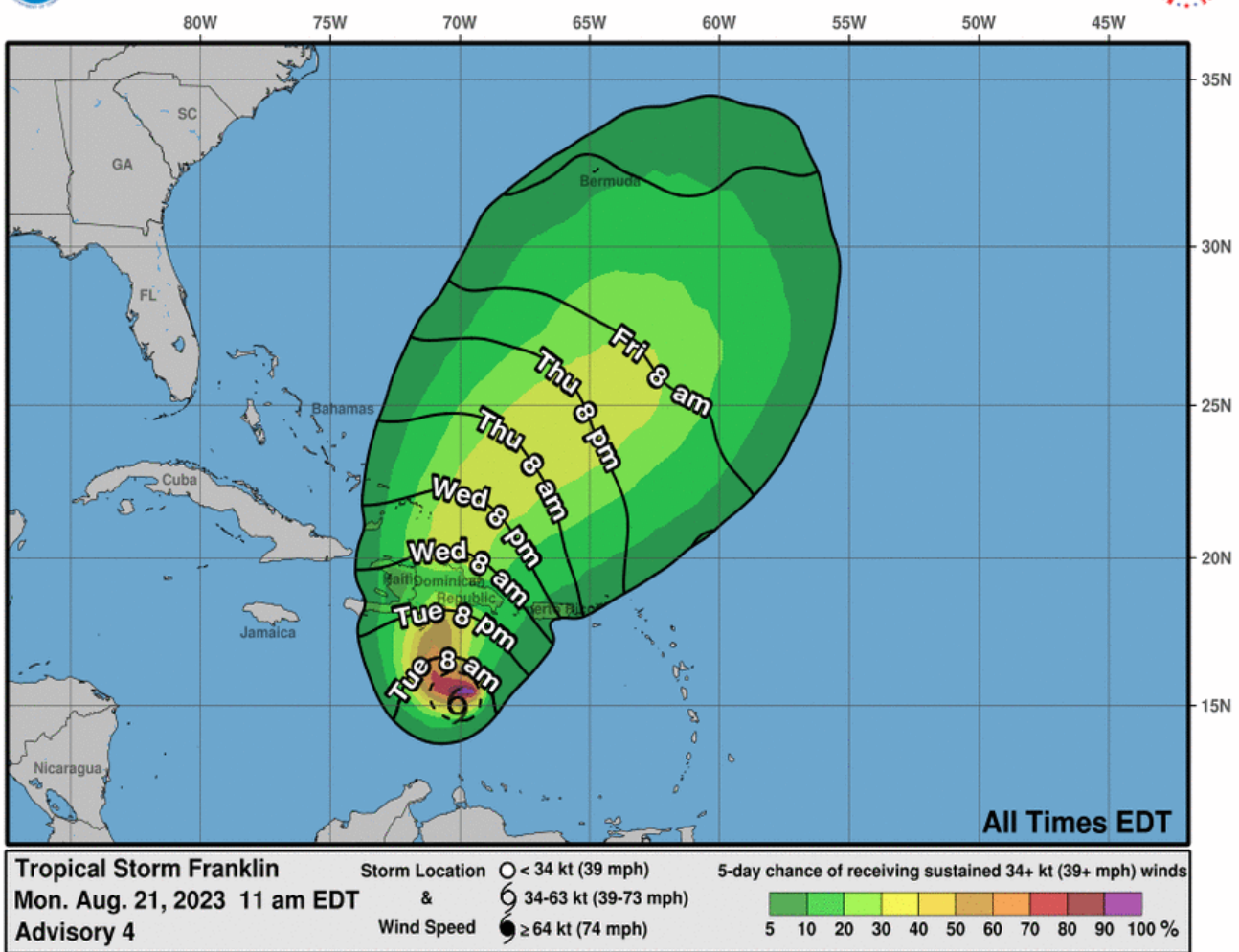


Wind Probabilities & Satellite Imagery

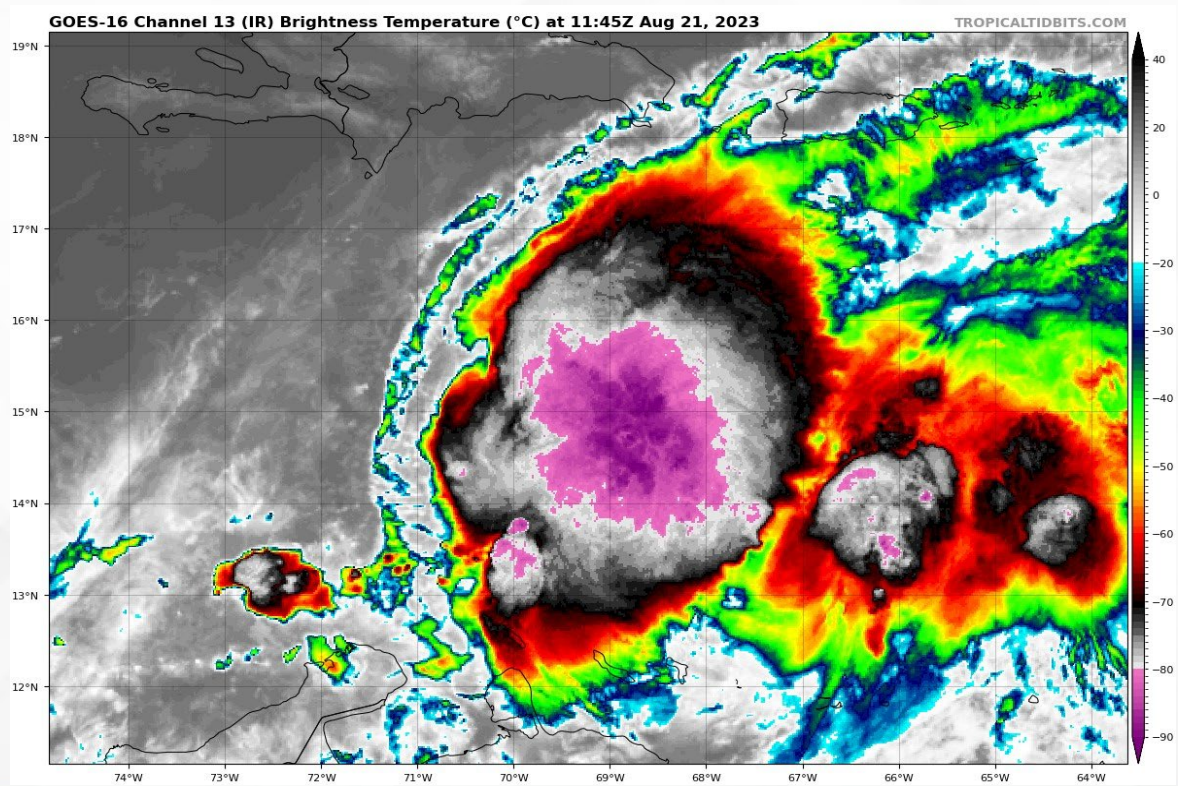
Tropical Storm Franklin ([LINK](#))



Most Likely Arrival Time of Tropical-Storm-Force Winds



Franklin is expected to bring tropical storm conditions to portions of the Dominican Republic and Haiti beginning on Tuesday. Heavy rainfall is expected across Puerto Rico and Hispaniola through the middle of the week. Tropical storm conditions are not expected across the continental United States.



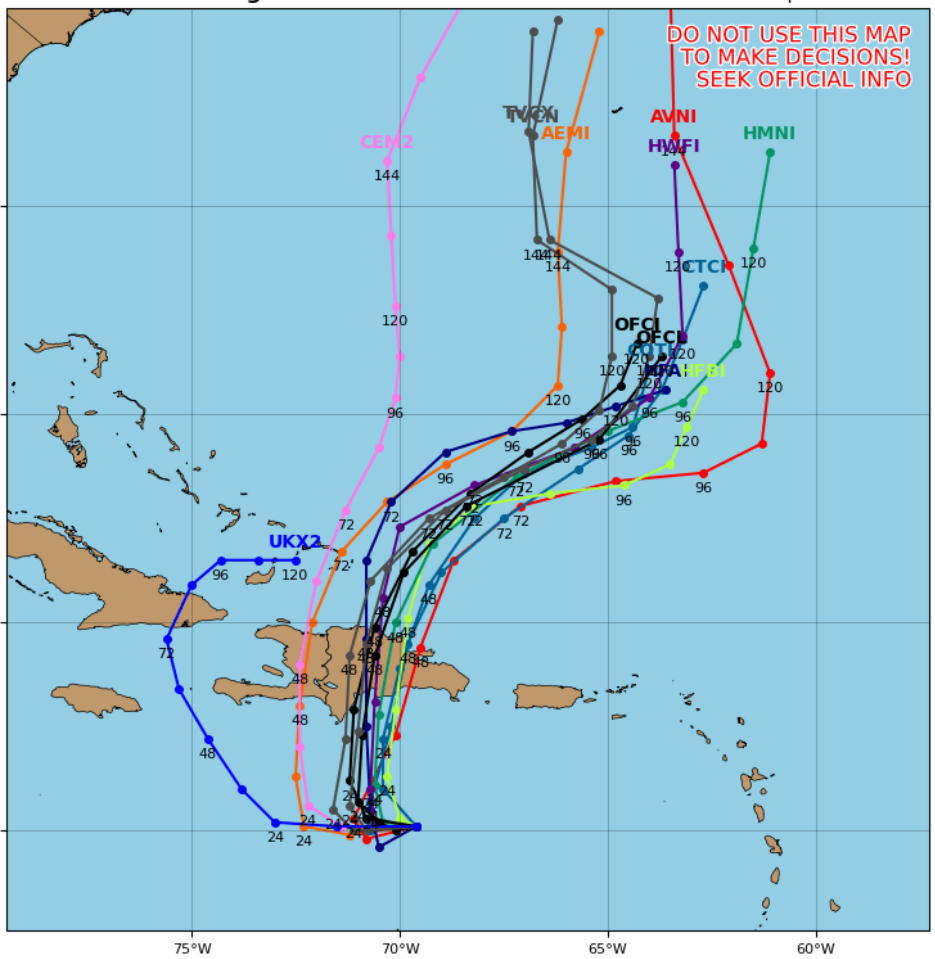


Model Forecasts – Next 5 Days

Tropical Storm Franklin

Tropical Storm FRANKLIN Model Track Guidance

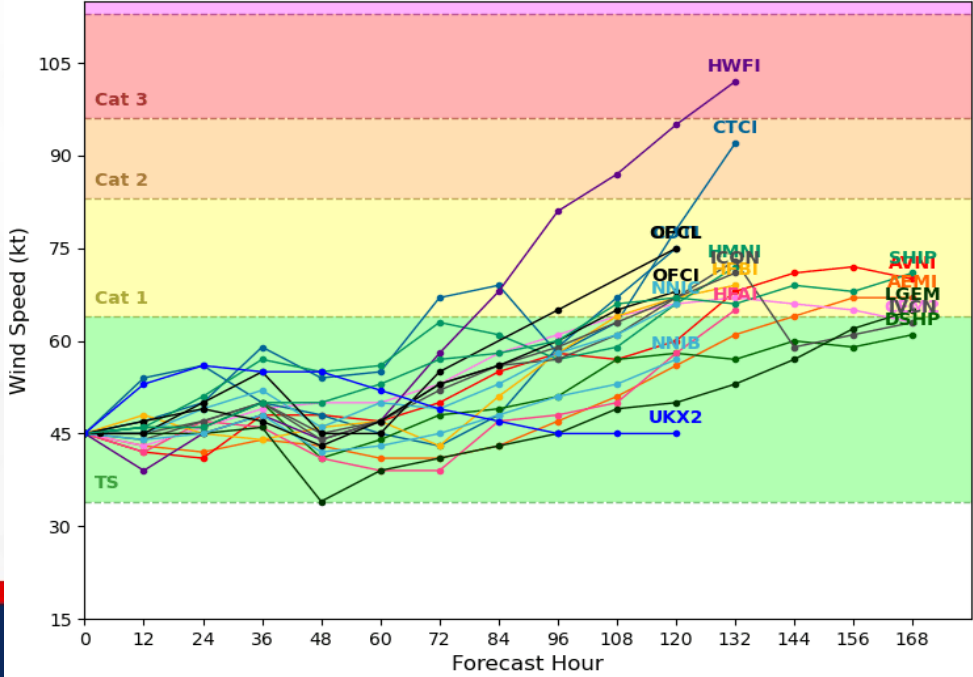
Initialized at 12z Aug 21 2023 Levi Cowan - tropicaltidbits.com



The weakness in the tropical area of high pressure and the presence of a large upper-level disturbance over the mid-Atlantic Ocean is expected to cause Franklin to turn northward in the next 24-36 hours, crossing Hispaniola in the 48-hour timeframe. Computer model guidance is in decent agreement that a general northeastward motion over the Atlantic can be expected over the next 48-72 hours; however, model uncertainty returns in the 3-5-day forecast regarding a slight leftward nudge in motion. Computer model guidance is in decent agreement that moderate wind shear will keep Franklin as a tropical storm, and the interaction with the mountainous terrain of Hispaniola should temporarily disrupt the circulation. Guidance suggests that wind shear will not be strong enough to prevent the system from further strengthening, and Franklin may become a hurricane around day 5.

Tropical Storm FRANKLIN Model Intensity Guidance

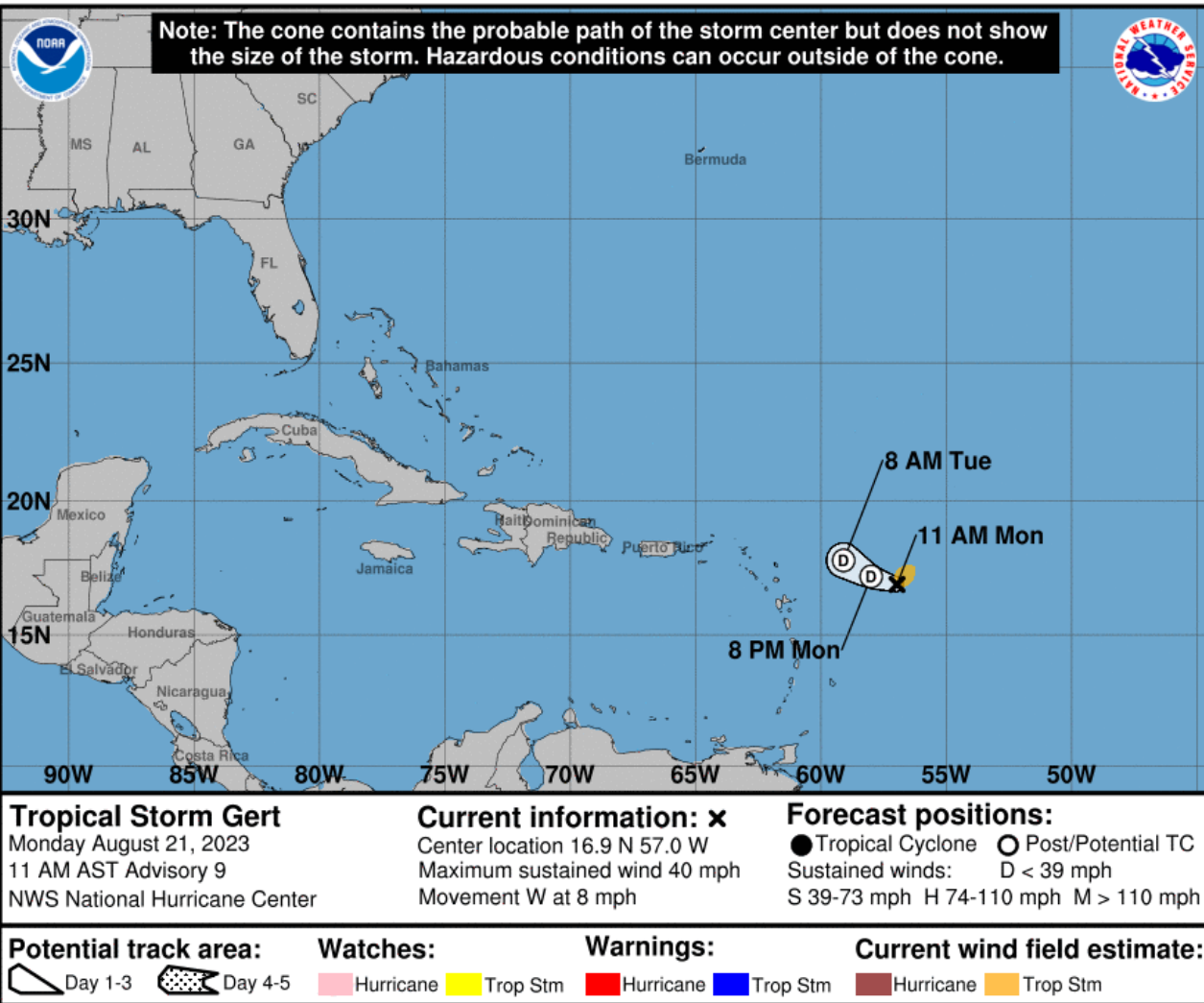
Initialized at 12z Aug 21 2023 Levi Cowan - tropicaltidbits.com





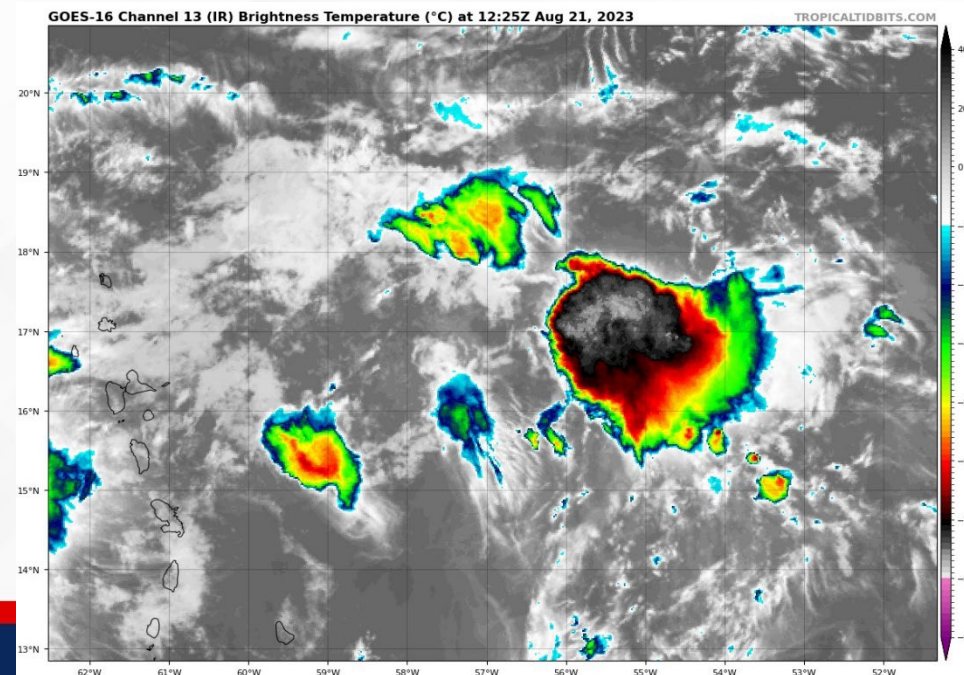
Forecast Cone

Tropical Storm Gert ([LINK](#))



- **Location:** 410 miles ESE of Northern Leeward Islands
- **Maximum Sustained Winds:** 40 mph
- **Current Movement:** W at 8 mph
- **FL Watches/Warnings:** None

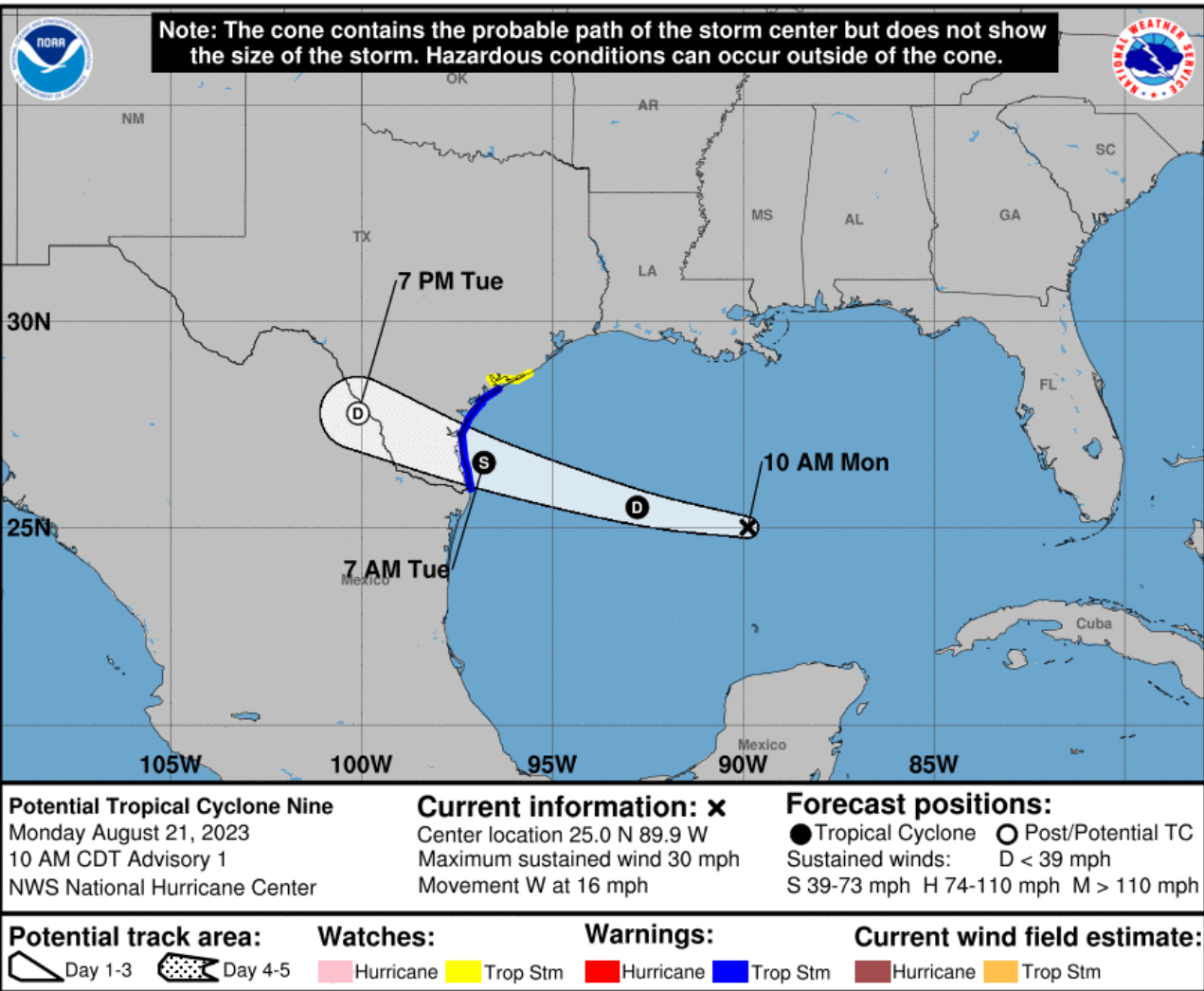
As of 11:00 AM EDT, Tropical Storm Gert is moving toward the west near 8 mph, and this general motion is expected to continue today. Gert, or its remnants, are forecast to turn northwestward tonight and tomorrow. Maximum sustained winds are near 40 mph, and slow weakening is forecast for the next day or so. Gert could become a remnant low at any time. *Gert poses no threat to Florida.*





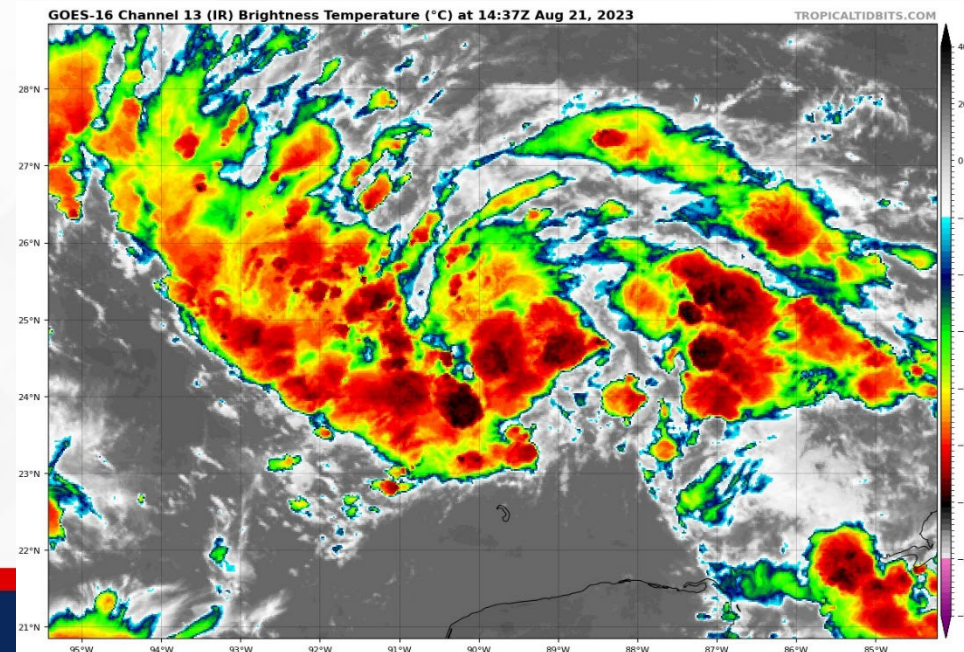
Forecast Cone

Potential Tropical Cyclone Nine ([LINK](#))



- **Location:** 480 miles ESE of Port Mansfield, Texas
- **Maximum Sustained Winds:** 30 mph
- **Current Movement:** W at 16 mph
- **FL Watches/Warnings:** None

As of 11:00 AM EDT, Potential Tropical Cyclone (PTC) Nine formed over the central Gulf of Mexico. The system is moving toward the west near 16 mph, and a fast motion to the west is expected to continue as PTC Nine is forecast to move inland over south Texas early Tuesday. Maximum sustained winds are near 30 mph, with strengthening forecast prior to moving onshore. PTC Nine is forecast to become a tropical storm before it reaches the Texas Coast. *This system poses no direct threat to Florida; however, elevated rip current risks and increased swell heights will linger along several Florida beaches today.*





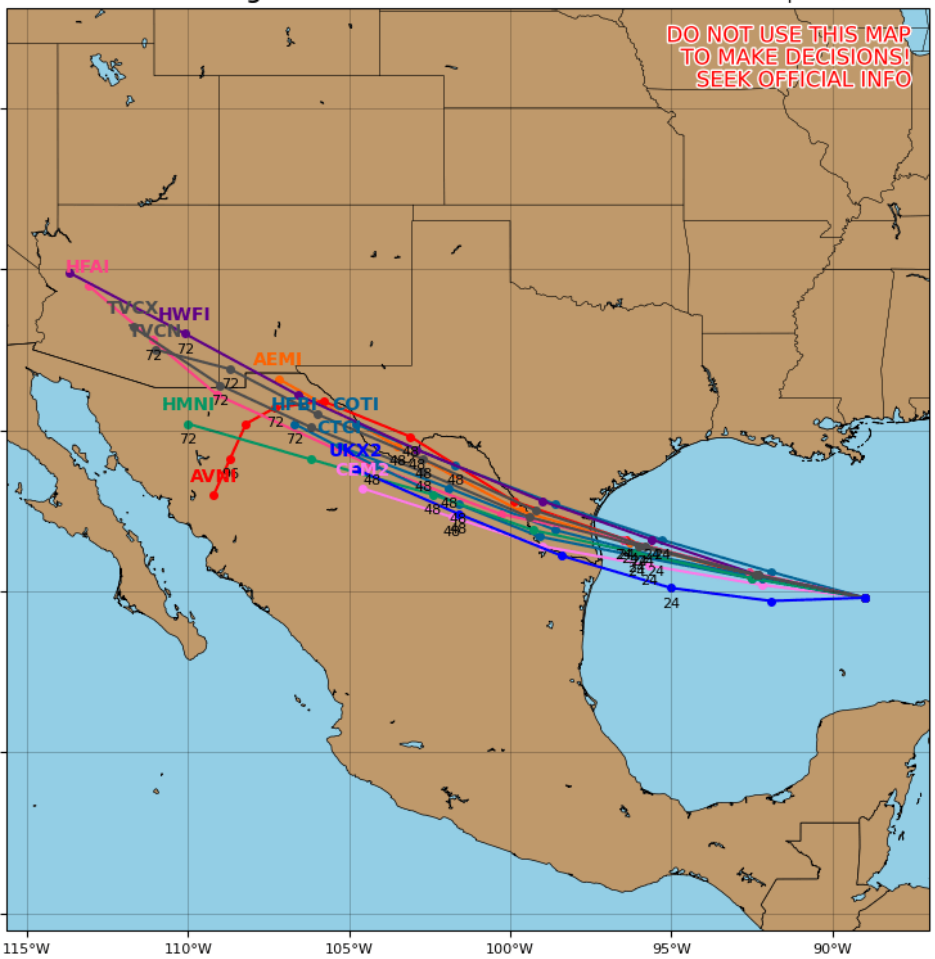
Model Forecasts – Next 5 Days

Potential Tropical Cyclone Nine

Invest 91L Model Track Guidance

Initialized at 12z Aug 21 2023

Levi Cowan - tropicaltidbits.com

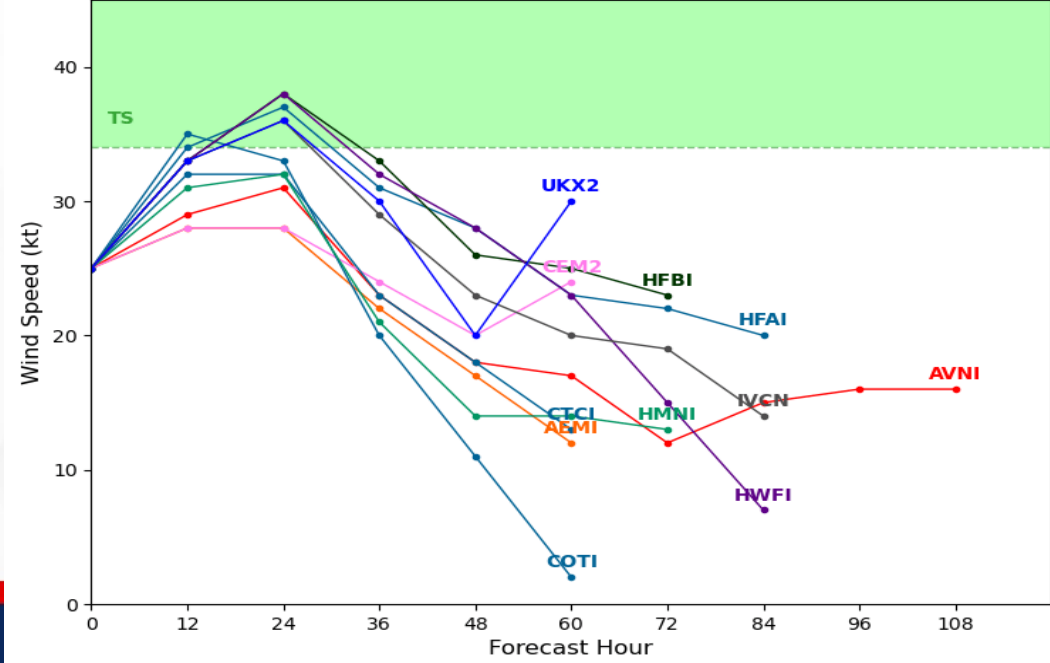


Computer models are in good agreement that PTC #9 will move quickly westward, reaching the South Texas coastline in the next 24-36 hours. Environmental conditions are generally favorable for PTC #9 to strengthen; however, there is limited time for the disturbance to remain over the Gulf of Mexico waters. Computer model guidance suggests the system could briefly reach tropical storm status prior to moving onshore the western Gulf of Mexico coastline.

Invest 91L Model Intensity Guidance

Initialized at 12z Aug 21 2023

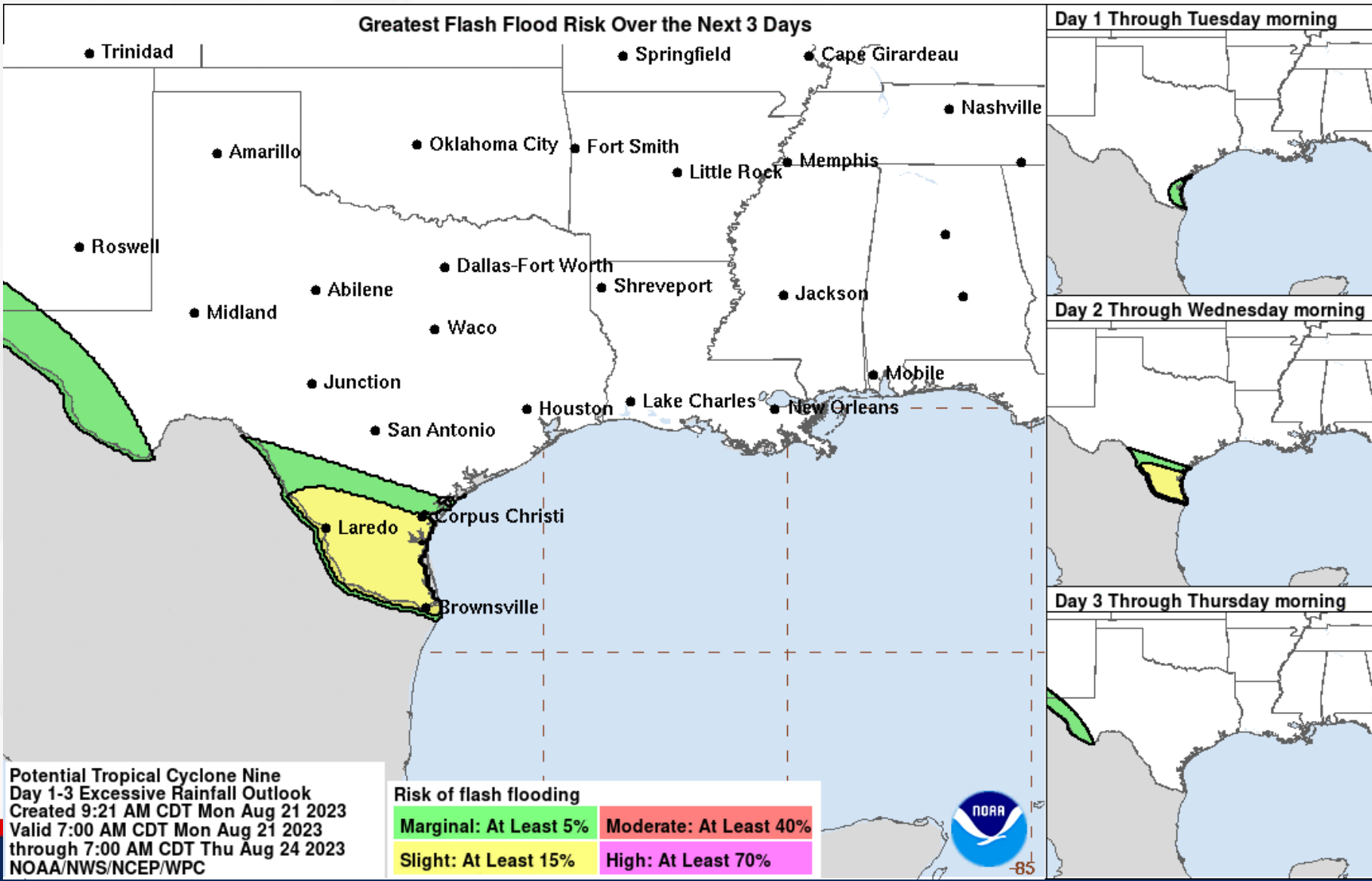
Levi Cowan - tropicaltidbits.com





Flash Flooding Threat – South Texas

Potential Tropical Cyclone Nine

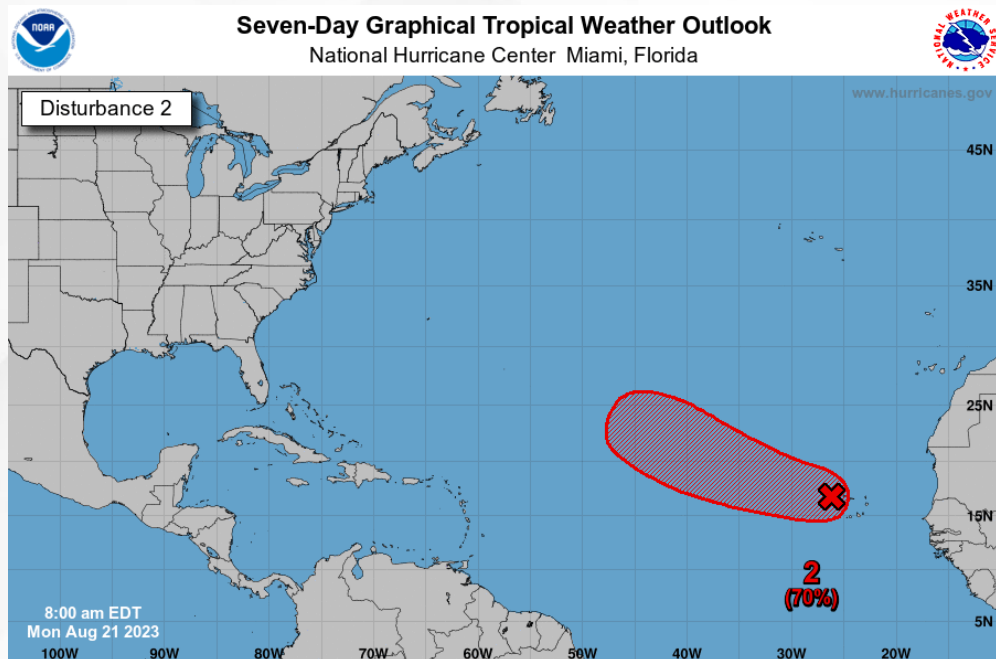


MARGINAL (MRGL)	SLIGHT (SLGT)
Isolated flash floods possible	Scattered flash floods possible
Localized and primarily affecting places that can experience rapid runoff with heavy rainfall.	Mainly localized. Most vulnerable are urban areas, roads, small streams and washes. Isolated significant flash floods possible.

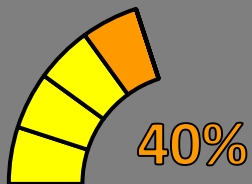


Tropical Weather Outlook

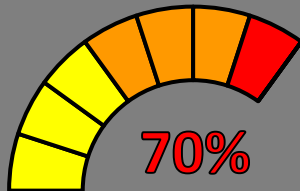
Disturbance 1 – Invest 92L ([LINK](#))



Current Disturbances and Seven-Day Cyclone Formation Chance: < 40% 40-60% > 60%
Tropical or Sub-Tropical Cyclone: Depression Storm Hurricane
 Post-Tropical Cyclone or Remnants



48 Hour Formation



5 Day Formation

Showers and thunderstorms over the Cabo Verde Islands and portions of the eastern tropical Atlantic are associated with a tropical wave. Environmental conditions appear generally conducive for gradual development of this system, and a tropical depression is likely to form later this week while it moves west-northwestward across the eastern tropical Atlantic.

Invest 92L poses no threat to Florida, at this time.

* Formation chance through 48 hours...**medium...40%.**

* Formation chance through 7 days...**high...70%.**



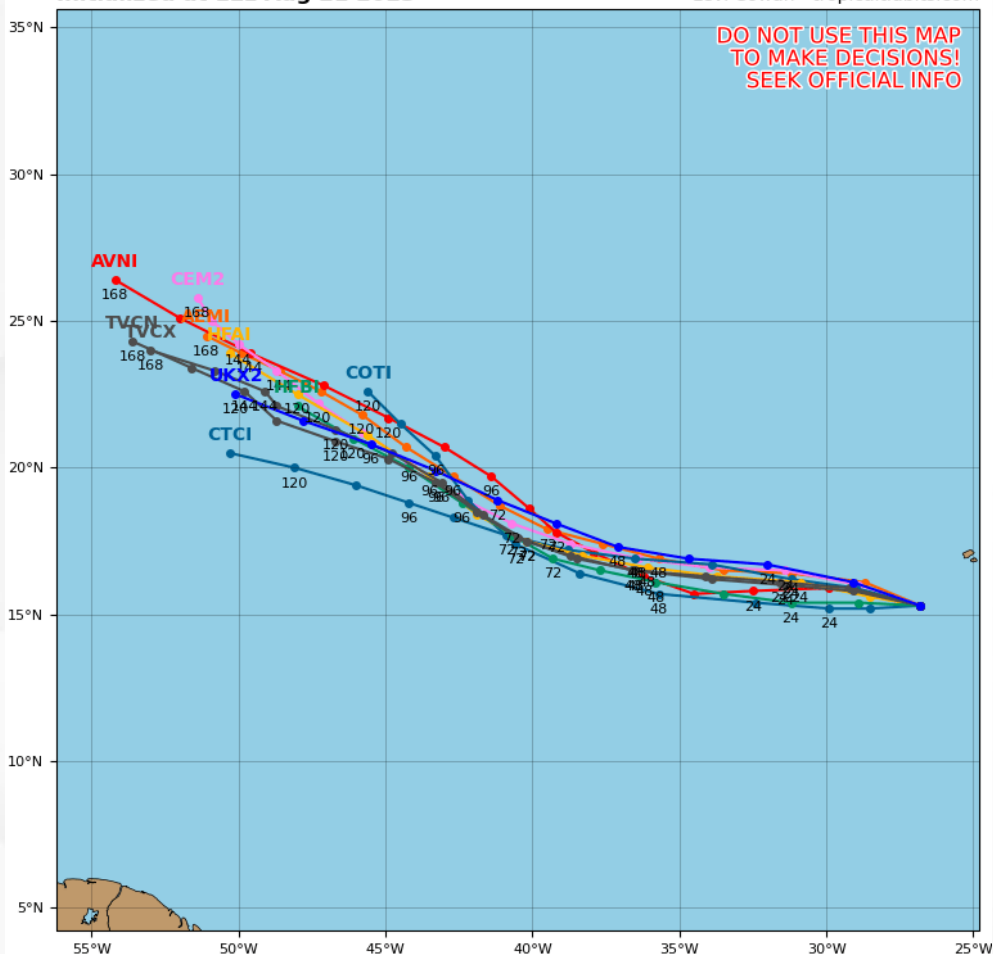
Model Forecasts – Next 5 Days

Invest 92L

Invest 92L Model Track Guidance

Initialized at 12z Aug 21 2023

Levi Cowan - tropicaltidbits.com

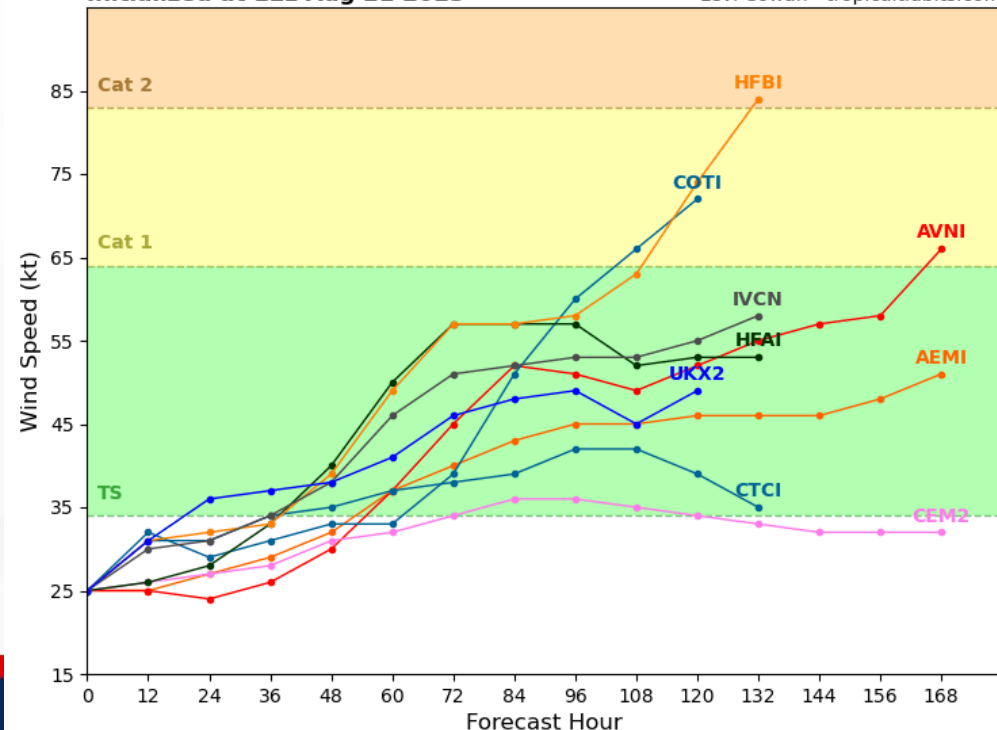


Computer models are in good agreement that Invest 92L will continue to move westward to west-northwestward over the next 5-7 days over the open eastern Atlantic. While there remains a bit of uncertainty regarding the extent of Invest 92L's strengthening, the system could become a tropical depression or tropical storm as early as Wednesday evening or Thursday morning.

Invest 92L Model Intensity Guidance

Initialized at 12z Aug 21 2023

Levi Cowan - tropicaltidbits.com





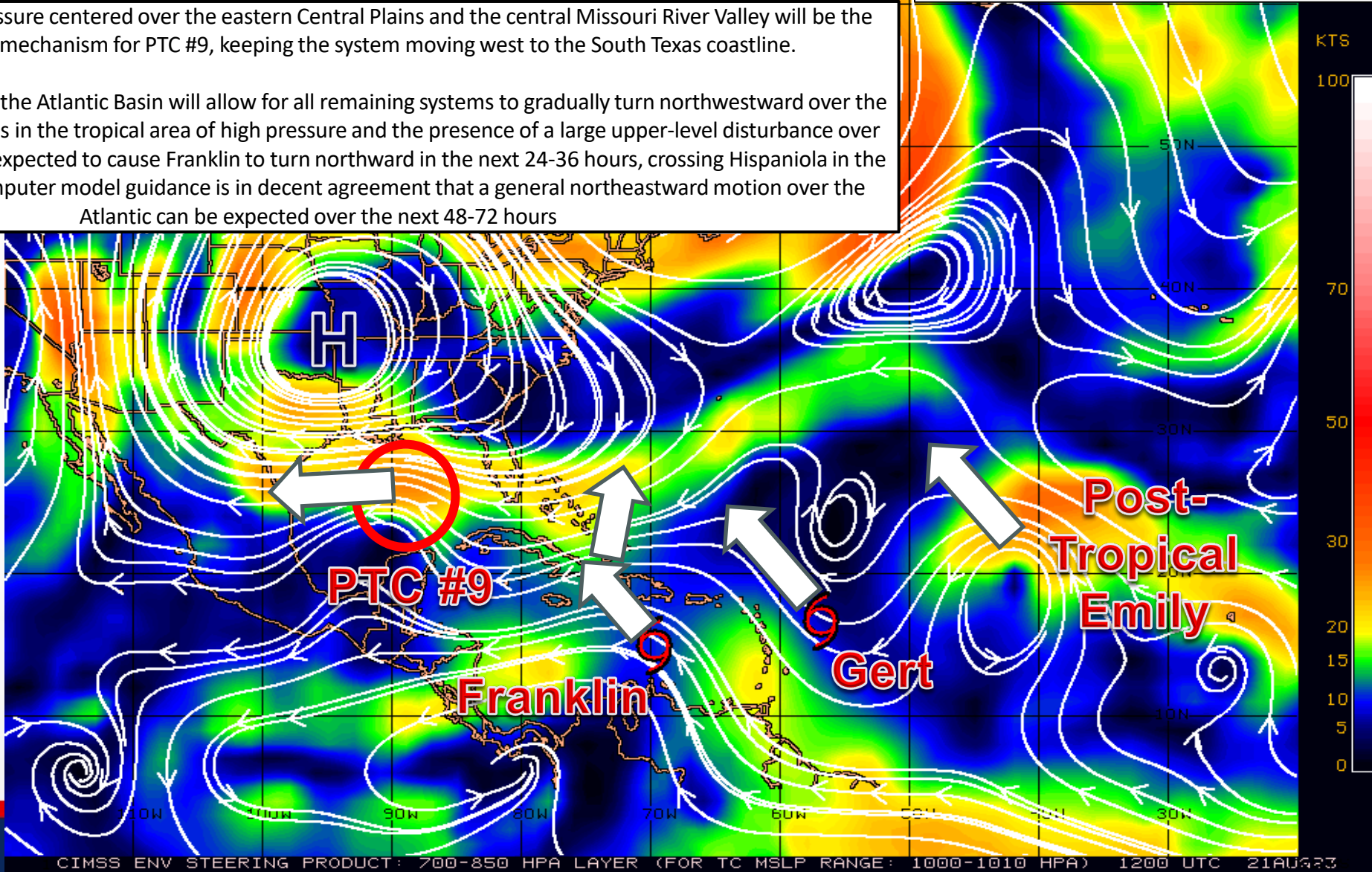
Steering Currents

What is Moving the System?

Color denotes the movement speed through the atmosphere and thin white lines denote direction. Tightly clustered white lines represent faster movement as well.

A strong area of high pressure centered over the eastern Central Plains and the central Missouri River Valley will be the primary steering mechanism for PTC #9, keeping the system moving west to the South Texas coastline.

Weaker steering flow over the Atlantic Basin will allow for all remaining systems to gradually turn northwestward over the open ocean. The weakness in the tropical area of high pressure and the presence of a large upper-level disturbance over the mid-Atlantic Ocean is expected to cause Franklin to turn northward in the next 24-36 hours, crossing Hispaniola in the 48-hour timeframe. Computer model guidance is in decent agreement that a general northeastward motion over the Atlantic can be expected over the next 48-72 hours



Fast Moving Storm

Fast Moving Storm

Typical Moving Storm

Slow Moving Storm



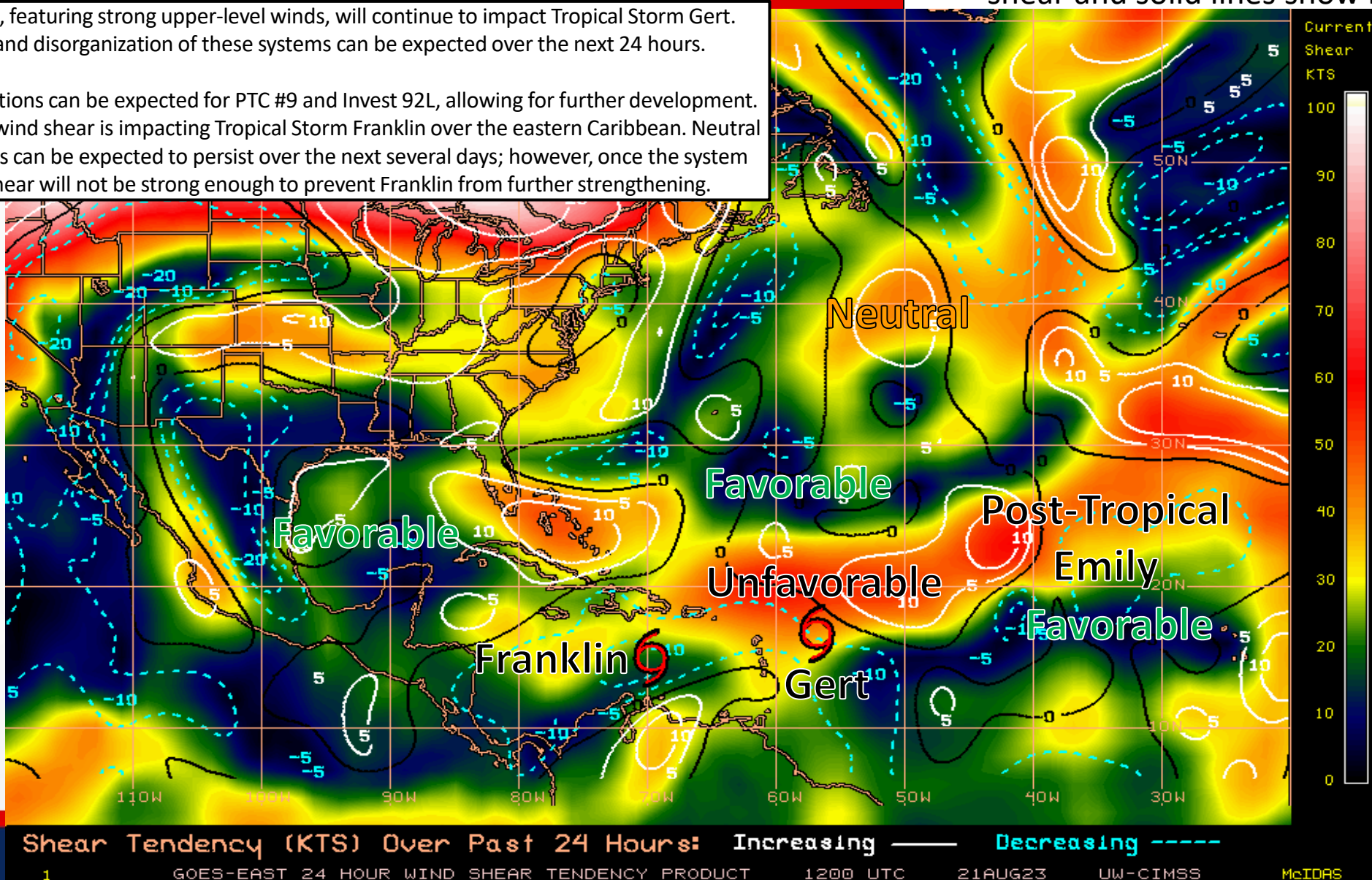
Wind Shear

Is the environment favorable for the system?

Unfavorable conditions, featuring strong upper-level winds, will continue to impact Tropical Storm Gert. Further weakening and disorganization of these systems can be expected over the next 24 hours.

Generally favorable conditions can be expected for PTC #9 and Invest 92L, allowing for further development. Moderate southwesterly wind shear is impacting Tropical Storm Franklin over the eastern Caribbean. Neutral to unfavorable conditions can be expected to persist over the next several days; however, once the system passes Hispaniola, shear will not be strong enough to prevent Franklin from further strengthening.

Color denotes the amount of wind shear and the lines denote how it have changed over the last 24 hours (dotted lines show decreasing shear and solid lines show increasing).





Tropical Storm Franklin, currently moving slowly westward, will remain embedded within a moist environment. Invest 92L may encounter pockets of drier air as it moves west-northwestward over the eastern Atlantic.





Elevated Rip Current Risk

Panhandle & East Coast Beaches



As PTC #9 continues to advance westward to the South Texas coastline over the next 24-48 hours, moderate easterly flow will persist along all Florida beaches today. A **moderate to high risk of rip currents** can be expected for Panhandle and Atlantic Coast beaches, with lingering elevated swell heights. **Wave heights** of 2-4' can be expected, with locally higher breakers in the surf zone reaching 4-6' possible.



Summary

Tropical Storm Franklin:

- As of 11:00 AM EDT, Tropical Storm Franklin is located about 240 miles south of Santo Domingo, Dominican Republic, and is moving westward at 6 mph.
- A sharp turn toward the north is expected tonight or early Tuesday, and a generally northward motion is expected later on Tuesday.
- Maximum sustained winds are near 50 mph, and some strengthening is forecast before Franklin reaches Hispaniola. *Franklin poses no direct threat to Florida.*

Tropical Storm Gert:

- As of 11:00 AM EDT, Tropical Storm Gert is located about 410 miles east-southeast of the Northern Leeward Islands, and is moving toward the west near 8 mph.
- This general motion is expected to continue today, and Gert (or its remnants) are forecast to turn northwestward tonight and tomorrow.
- Maximum sustained winds are near 40 mph, and slow weakening is forecast for the next day or so. *Gert poses no threat to Florida.*

Potential Tropical Cyclone (PTC) Nine:

- As of 11:00 AM EDT, PTC #9 is located about 480 miles east-southeast of Port Mansfield, Texas, and is moving westward at 16 mph.
- A fast forward motion to the west is expected to continue, and PTC #9 is forecast to move inland over South Texas early Tuesday.
- Maximum sustained winds are near 30 mph, and strengthening is forecast. This system is expected to become a tropical storm before it reaches the Texas Coast.
- Satellite imagery indicates the system is becoming better organized and it is expected to become a tropical depression later today. *This system poses no direct threat to Florida; however, elevated rip current risks and increased swell heights will linger along several Florida beaches today.*

Invest 92L (Eastern Tropical Atlantic):

- Showers and thunderstorms over the Cabo Verde Islands and portions of the eastern tropical Atlantic are associated with a tropical wave.
- Environmental conditions appear generally conducive for gradual development of this system, and a tropical depression is likely to form later this week while it moves west-northwestward across the eastern tropical Atlantic.
- There is a medium (40%) chance of development over the next 48 hours, and a high (70%) chance of development over the next 7 days. *Invest 92L poses no threat to Florida, at this time.*

Florida Outlook:

- Lingering easterly, onshore flow will yield isolated to scattered showers and thunderstorms to continue across the southern Peninsula today (35-55% chance of rain).
- While there is no organized risk for severe weather, a few stronger thunderstorms capable of producing locally gusty winds cannot be ruled out during the peak heating hours of the afternoon.
- As PTC #9 continues to advance westward to the South Texas coastline over the next 24-48 hours, moderate easterly flow will persist along all Florida beaches today. A **moderate to high risk of rip currents** can be expected for Panhandle and Atlantic Coast beaches, with lingering elevated swell heights. Wave heights of 2-4' can be expected, with locally higher breakers in the surf zone reaching 4-6' possible.
- The next name on this list is Harold.

The next briefing package will be issued on Tuesday. For the latest information, please visit the [National Hurricane Center website](#).



Tropical Update



Created by:

Caitlyn Gillespie, Deputy State Meteorologist

Caitlyn.Gillespie@em.myflorida.com

State Meteorological Support Unit

Florida Division of Emergency Management

Users wishing to subscribe (approval pending) to this distribution list, register at:

https://public.govdelivery.com/accounts/FLDEM/subscriber/new?topic_id=SERT_Met_Tropics.

Other reports available for subscription are available at:

<https://public.govdelivery.com/accounts/FLDEM/subscriber/new?preferences=true>