



Tropical Update



2:00 PM EDT

Monday, June 19, 2023

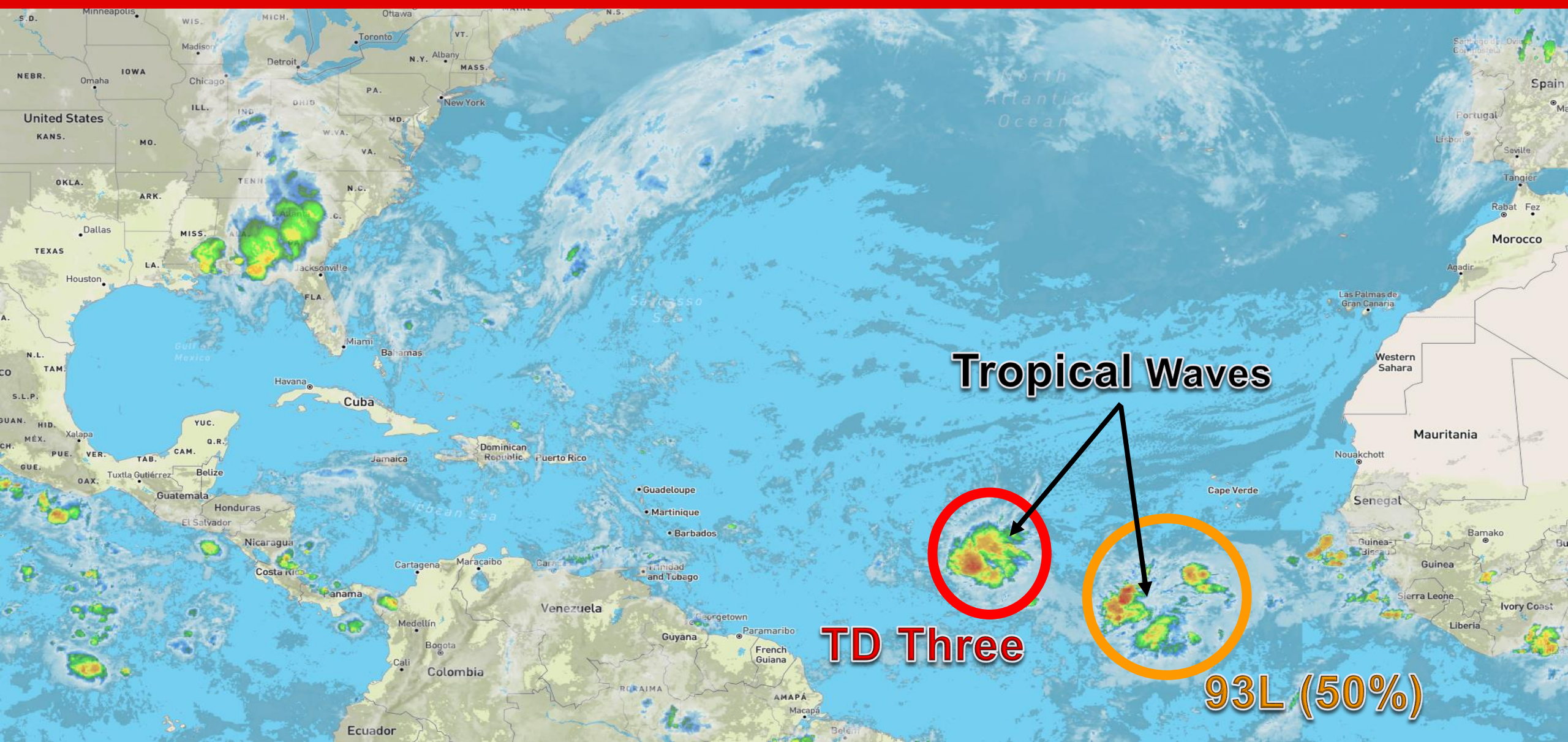
Tropical Depression Three & Invest 93L (50%)

This update is intended for government and emergency response officials, and is provided for informational and situational awareness purposes only. Forecast conditions are subject to change based on a variety of environmental factors. For additional information, or for any life safety concerns with an active weather event please contact your County Emergency Management or Public Safety Office, local National Weather Service forecast office, or visit the National Hurricane Center website at www.hurricanes.gov.



Atlantic Basin Satellite Image

Chance of development: None Low Medium High



Tropical Waves

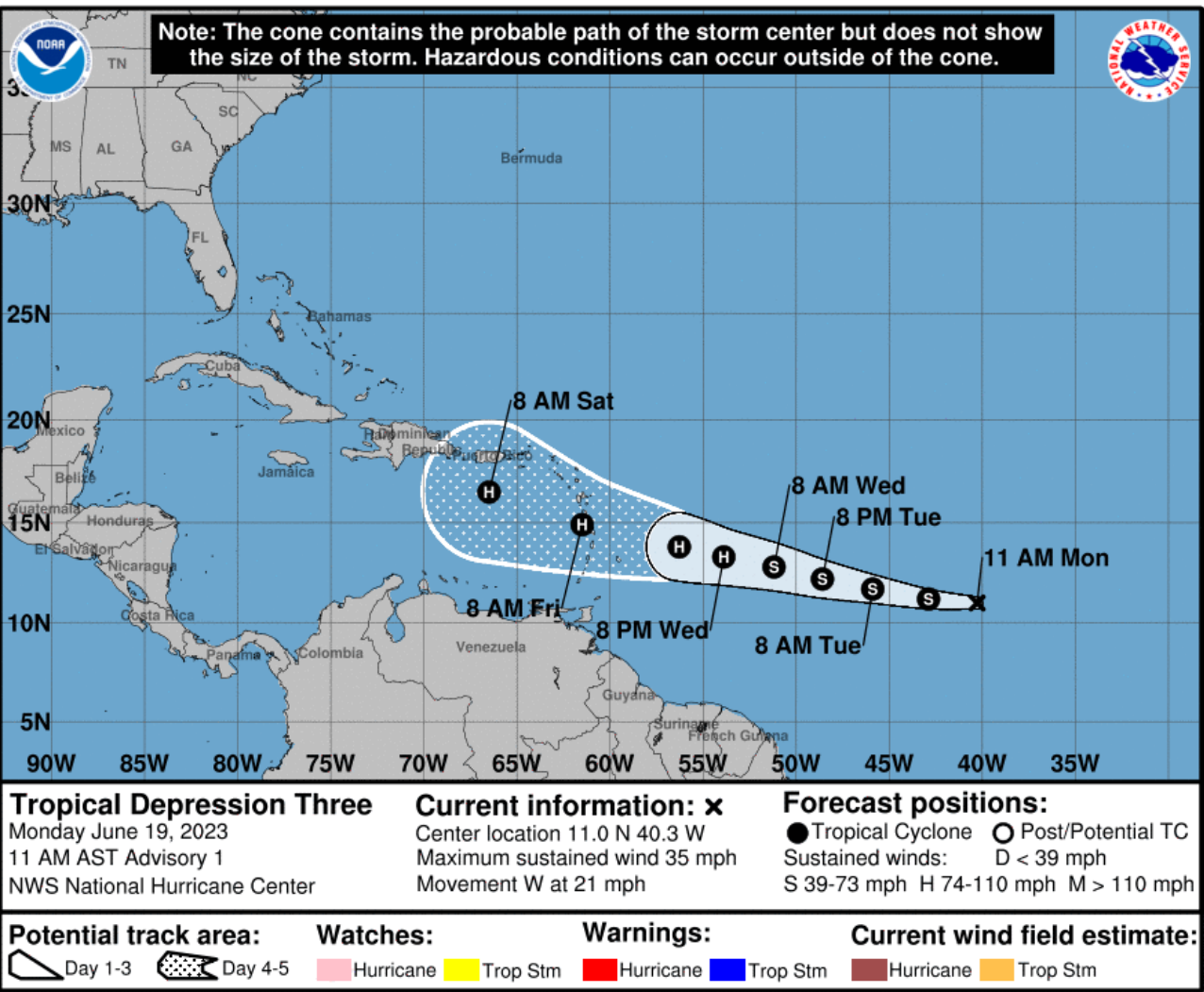
TD Three

93L (50%)



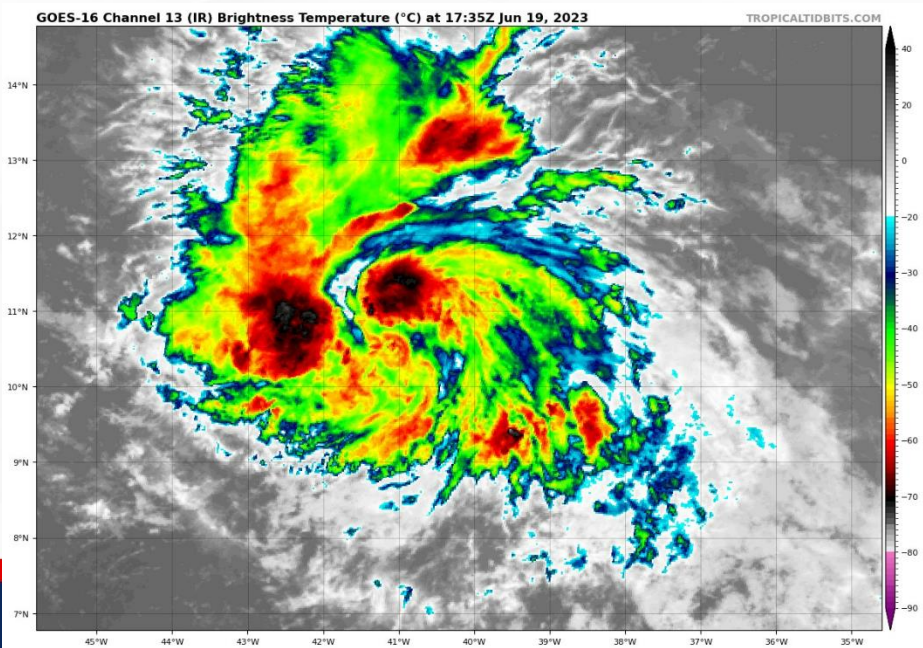
Forecast Cone

Tropical Depression Three ([LINK](#))



- **Location:** 1425 miles E of Southern Windward Islands
- **Maximum Sustained Winds:** 35 mph
- **Current Movement:** W at 21 mph
- **FL Watches/Warnings:** None

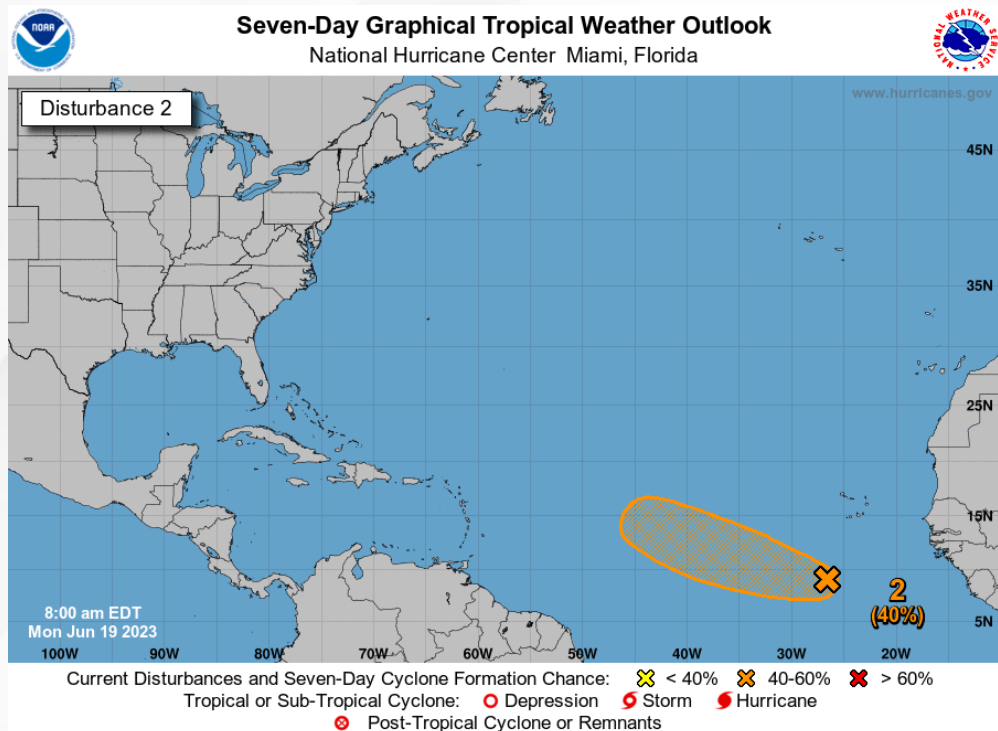
Tropical Depression Three is moving toward the west near 21 mph, and this motion is expected to continue for the next several days. On this forecast track, the system should be approaching the Lesser Antilles late this week. Some strengthening is forecast, and the depression is forecast to become a hurricane in a few days.





Tropical Weather Outlook

Disturbance 2 – Invest 93L ([LINK](#))

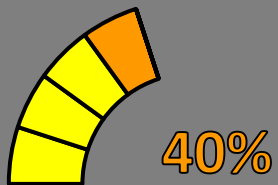


A tropical wave, located several hundred miles south-southwest of the Cabo Verde Islands, continues to produce a large area of disorganized showers and thunderstorms. Environmental conditions appear favorable for further development of this system, and a tropical depression could form in a couple days while the system moves westward at 10-15 mph across the eastern and central tropical Atlantic.

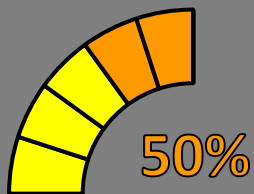
This system poses no threat to Florida over the next 7-10 days, at least.

* Formation chance through 48 hours...**medium...40 percent.**

* Formation chance through 7 days...**medium...50 percent.**



48 Hour Formation



5 Day Formation



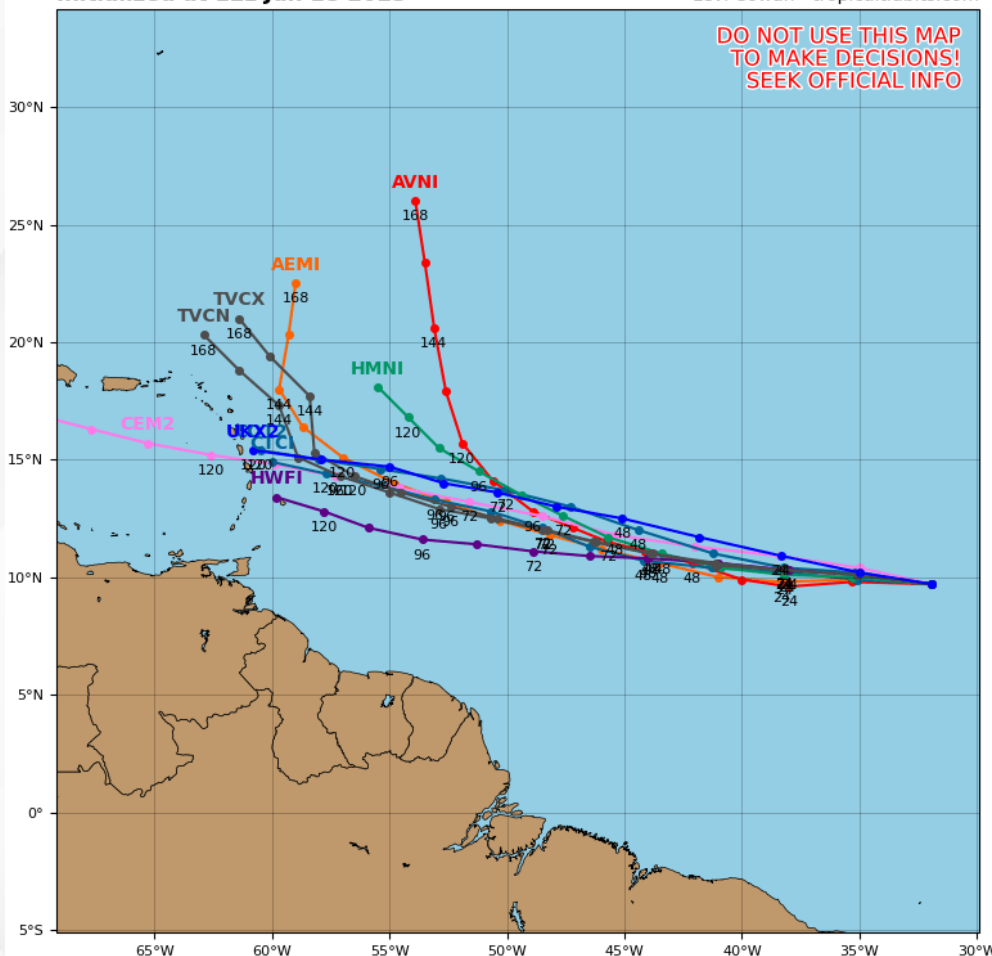
Model Forecasts – Next 5 Days

Tropical Depression Three

Invest 92L Model Track Guidance

Initialized at 12z Jun 18 2023

Levi Cowan - tropicaltidbits.com



Computer models are showing decent agreement over the first 1-3 days as Tropical Depression Three generally moves westward across the central tropical Atlantic. Environmental conditions appear conducive for strengthening over the next few days including above normal sea surface temperatures, weak upper-level winds, and a moist atmospheric air mass.

There remains uncertainty regarding the track forecast as the forecast track will likely be heavily dependent upon Tropical Depression Three's intensity. Intensity guidance without the presence of a well-defined center of circulation increases the level of forecast uncertainty. This system is very anomalous for June, which increases the uncertainty.



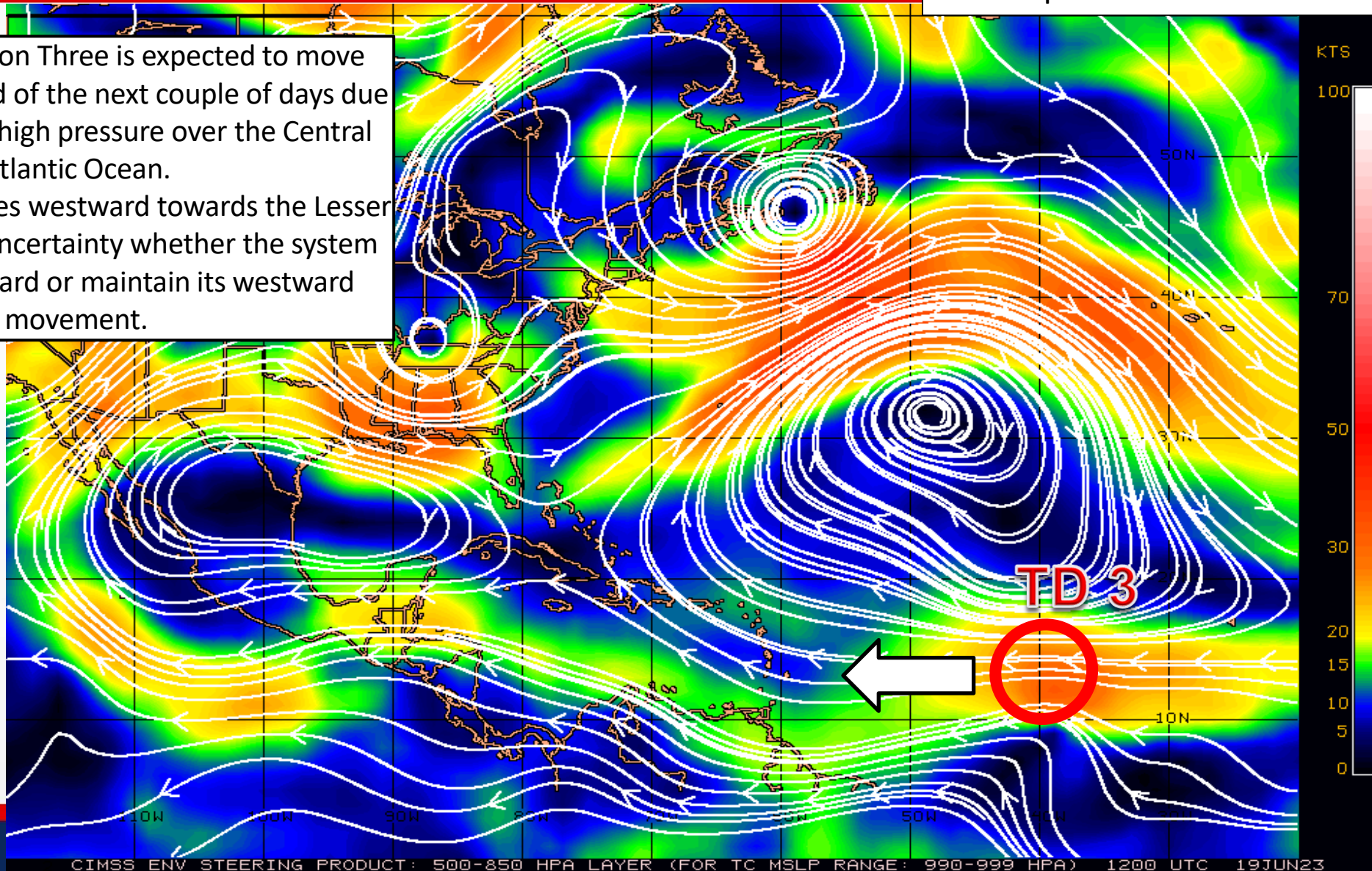
Steering Currents

What is Moving the System?

Color denotes the movement speed through the atmosphere and thin white lines denote direction. Tightly clustered white lines represent faster movement as well.

Tropical Depression Three is expected to move generally westward of the next couple of days due to a large area of high pressure over the Central Atlantic Ocean.

As the system moves westward towards the Lesser Antilles, there is uncertainty whether the system will turn northward or maintain its westward movement.



KTS

100

70

50

30

20

15

10

5

0

Fast Moving Storm

Fast Moving Storm

Typical Moving Storm

Slow Moving Storm

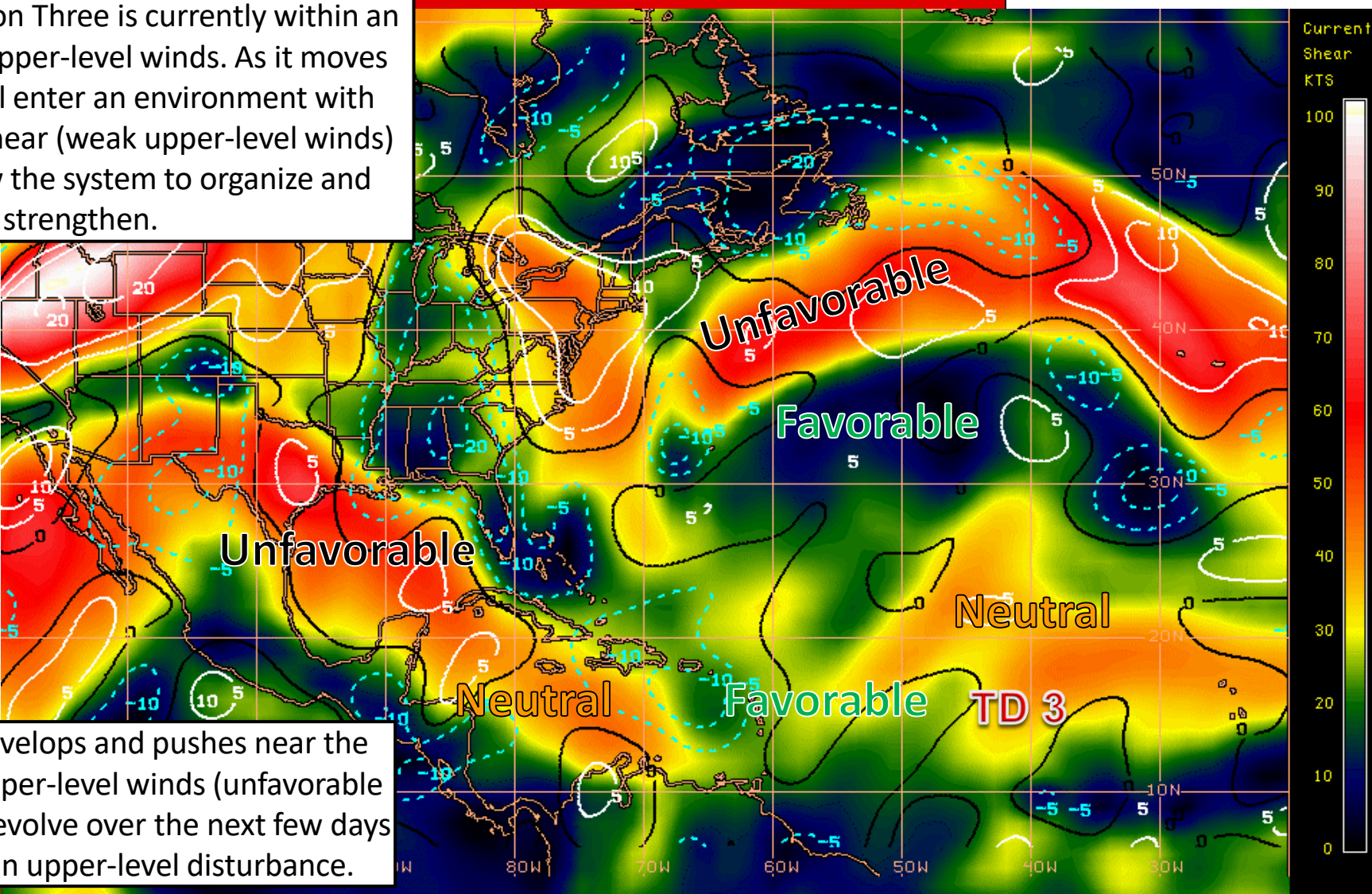


Wind Shear

Is the environment favorable for the system?

Color denotes the amount of wind shear and the lines denote how it have changed over the last 24 hours (dotted lines show decreasing shear and solid lines show increasing).

Tropical Depression Three is currently within an area of neutral upper-level winds. As it moves westward, it will enter an environment with favorable wind shear (weak upper-level winds) which will allow the system to organize and strengthen.



HIGH Shear
(Unfavorable)

HIGH Shear
(Unfavorable)

MODERATE
Shear
(Neutral)

LOW Shear
(Favorable)

As the system develops and pushes near the Lesser Antilles, upper-level winds (unfavorable conditions) could evolve over the next few days in response to an upper-level disturbance.

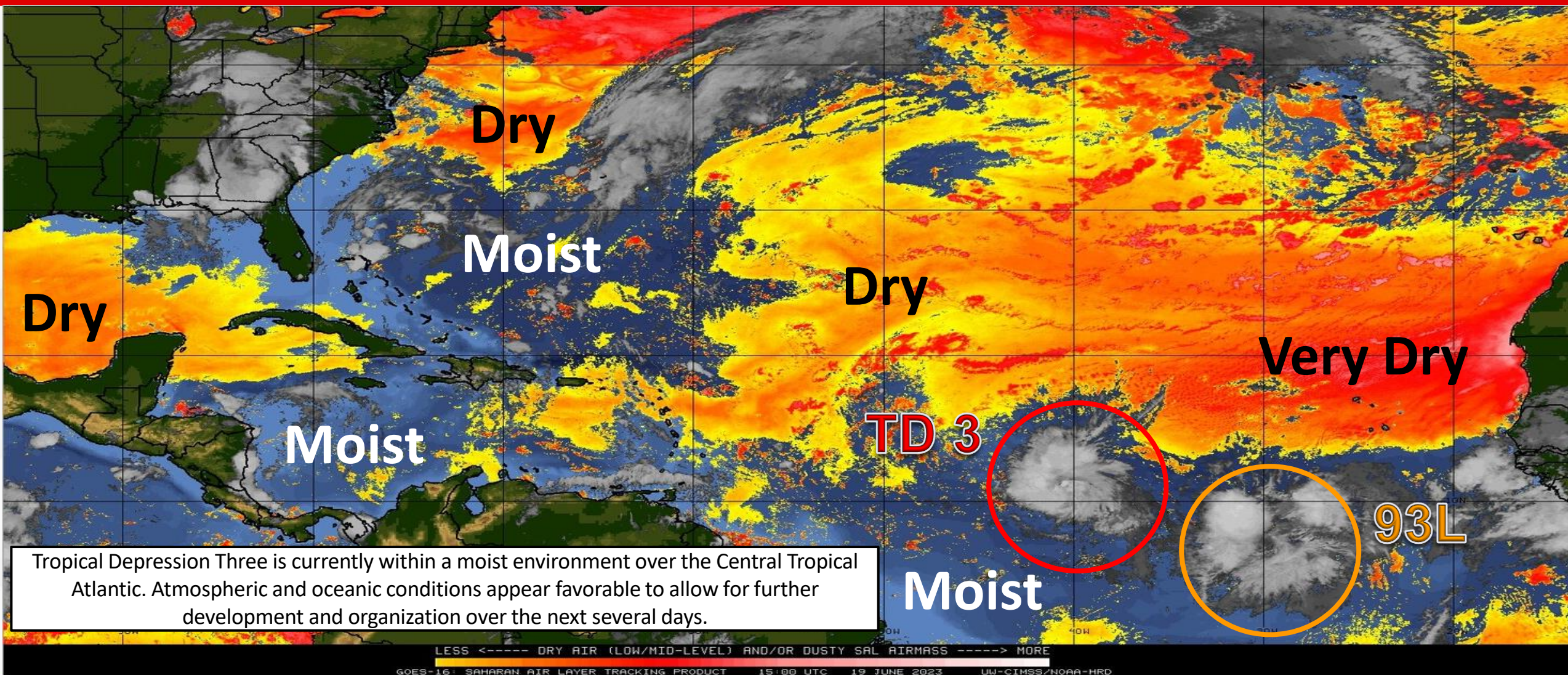
Shear Tendency (KTS) Over Past 24 Hours: Increasing ——— Decreasing - - - - -



Dry Air & Saharan Dust

Is the environment favorable for the system?

Color denotes concentration of Saharan Dust or dry, stable air.

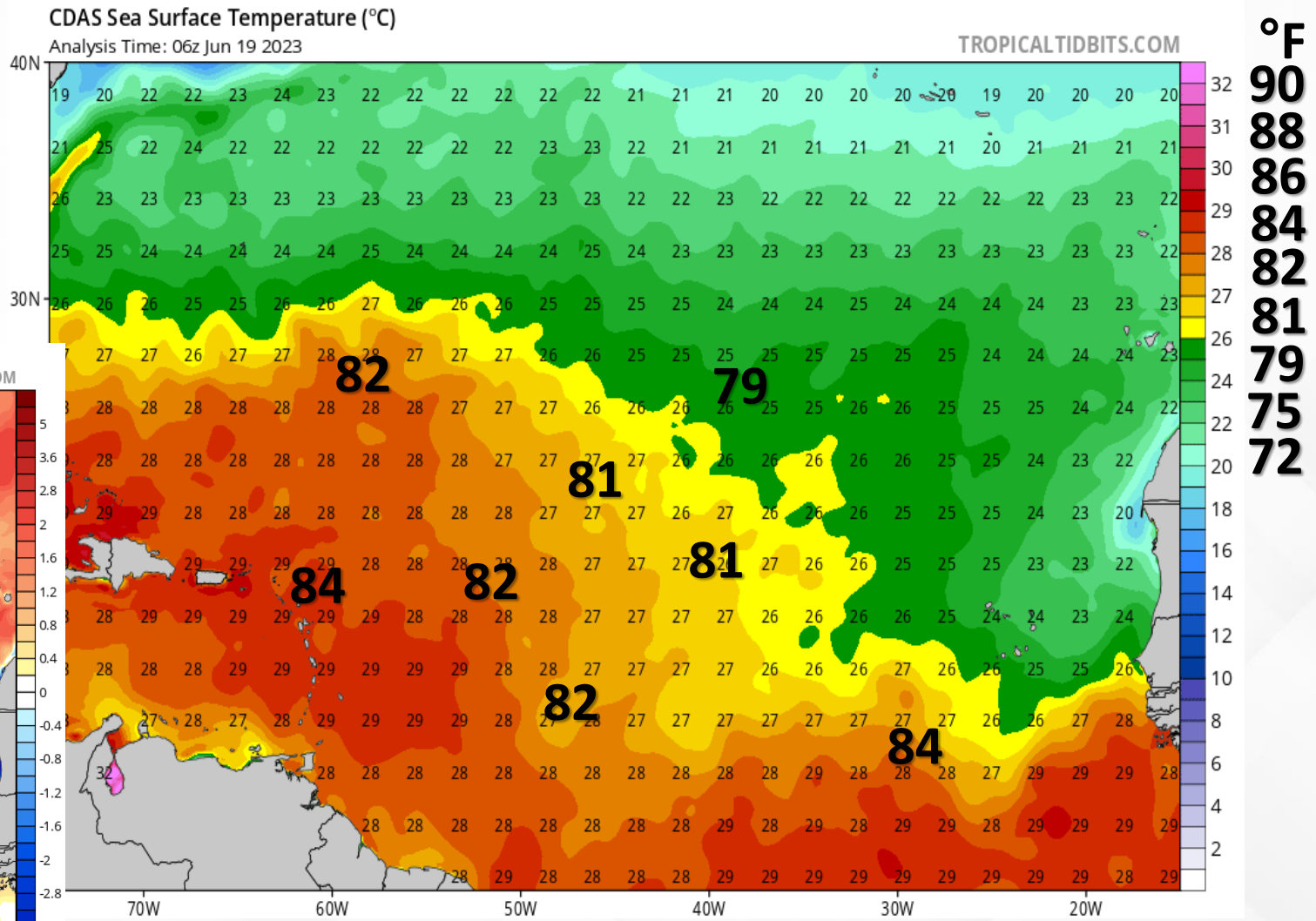
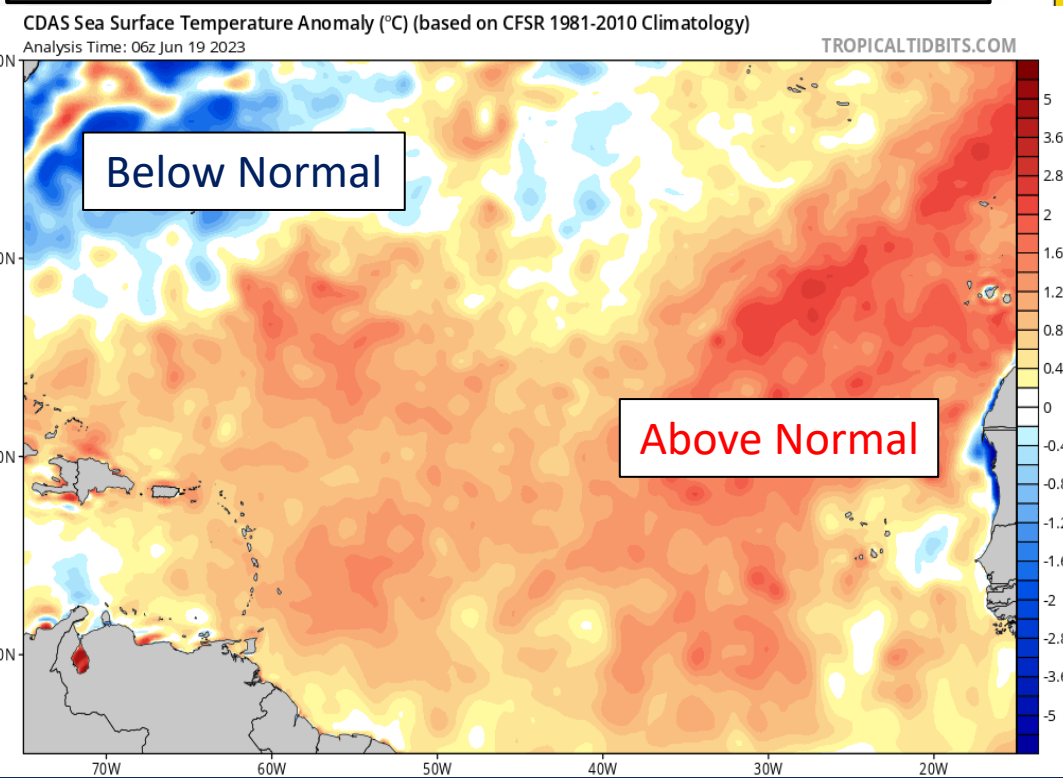




Sea Surface Temperatures & Anomalies

Is the ocean favorable for the system?

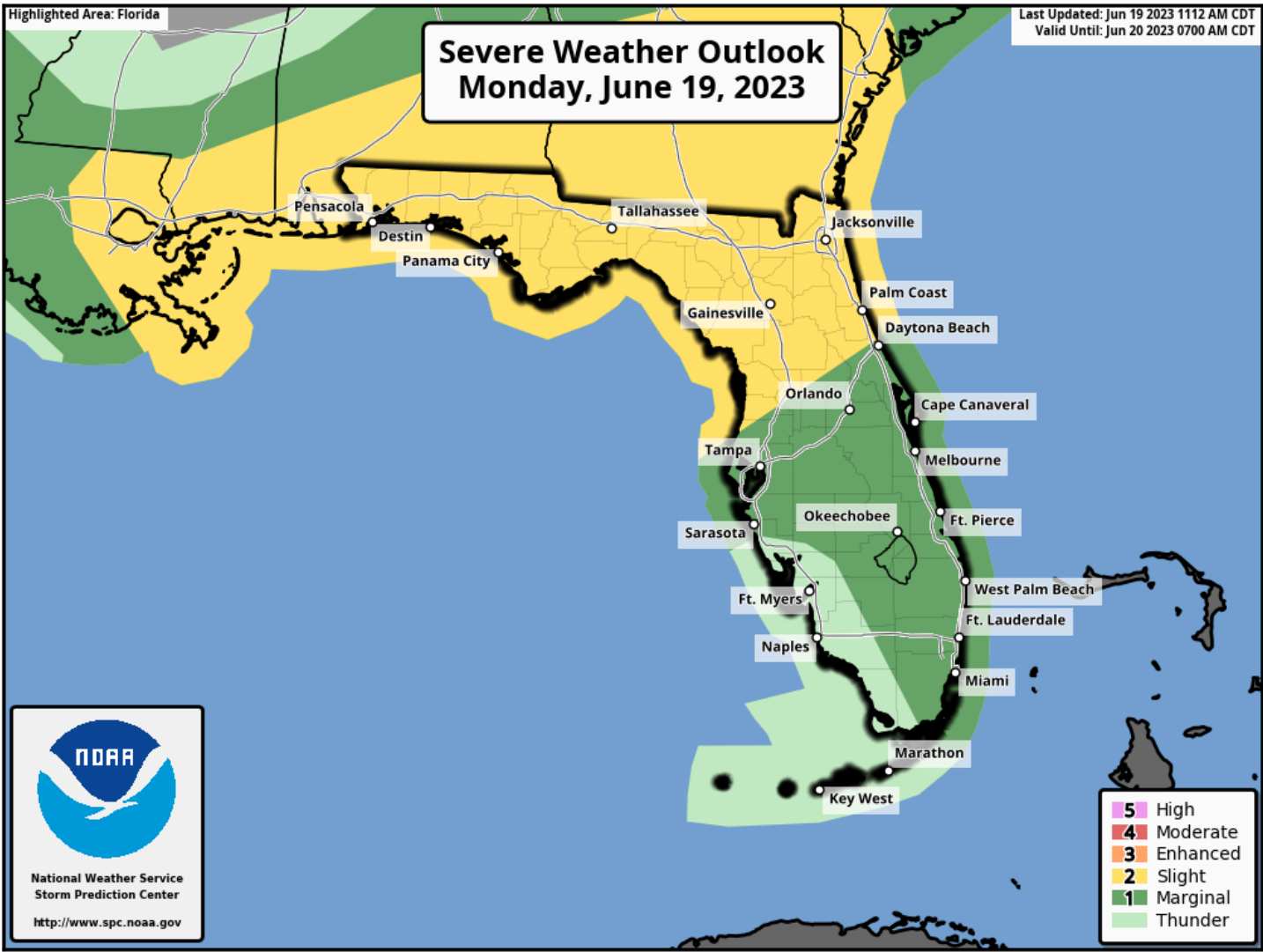
Abnormally warm ocean temperatures for this time of year are warm enough to support development across the Tropical Atlantic. Temperatures near Tropical Depression Three and Invest 93L are running 1 to 2-degrees above normal for this time of year.





Severe Weather Outlook - Today

From the Storm Prediction Center

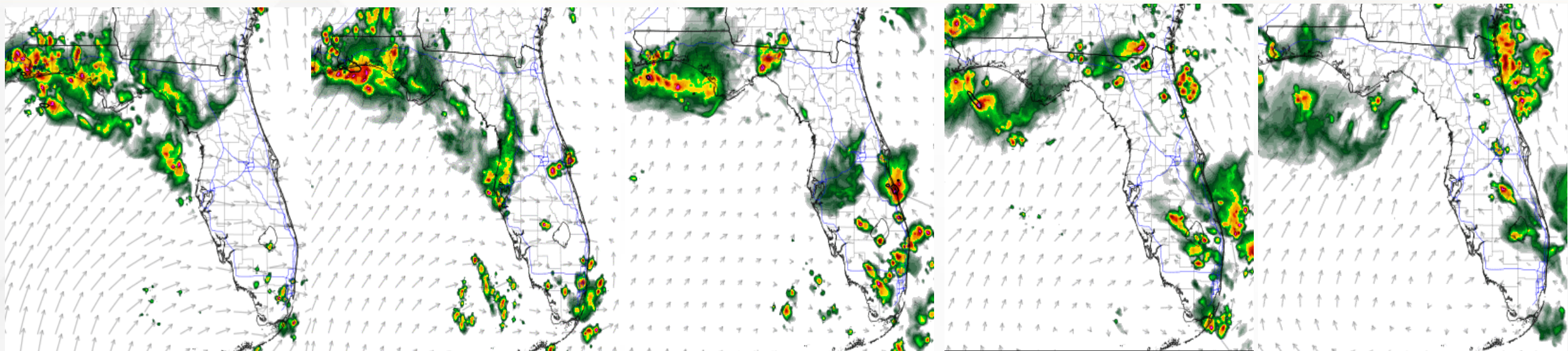


A cluster of thunderstorms will continue to move across North Florida and along the I-10 corridor through the morning and afternoon hours. The Storm Prediction Center (SPC) is outlooking a **Slight Risk (level 2 of 5) for Severe Weather** across North Florida and towards the I-4 corridor, with a **Marginal Risk (level 1 of 5)** extending through Central Florida and the eastern Peninsula. **Strong to severe thunderstorms** will be capable of producing all modes of severe weather including frequent lightning, damaging wind gusts (45-60 mph), isolated tornadoes, hail (dime to quarter, possibly ping pong size), and heavy downpours. Isolated to scattered showers and thunderstorms are anticipated to re-develop during the peak heating hours of the day with the help of the sea breeze moving inland. Shower and thunderstorm activity looks to slowly dissipate heading into the evening hours and push offshore towards the adjacent waters.



Model Forecast Radar- *HRRR*

*****Only Model Guidance – Time & Position Will Vary*****



2:00 PM EDT / 1:00 PM CDT

4:00 PM EDT / 3:00 PM CDT

6:00 PM EDT / 5:00 PM CDT

8:00 PM EDT / 7:00 PM CDT

10:00 PM EDT / 9:00 PM CDT

Scattered to numerous showers and thunderstorms will continue to push along the I-10 corridor and North Florida through the early to middle to afternoon hours. Strong to severe thunderstorms may re-develop during the peak heating hours of the day with the help of the sea breeze influence. Shower and thunderstorm activity looks to continue into the evening hours before slowly dissipating and pushing over the adjacent waters.



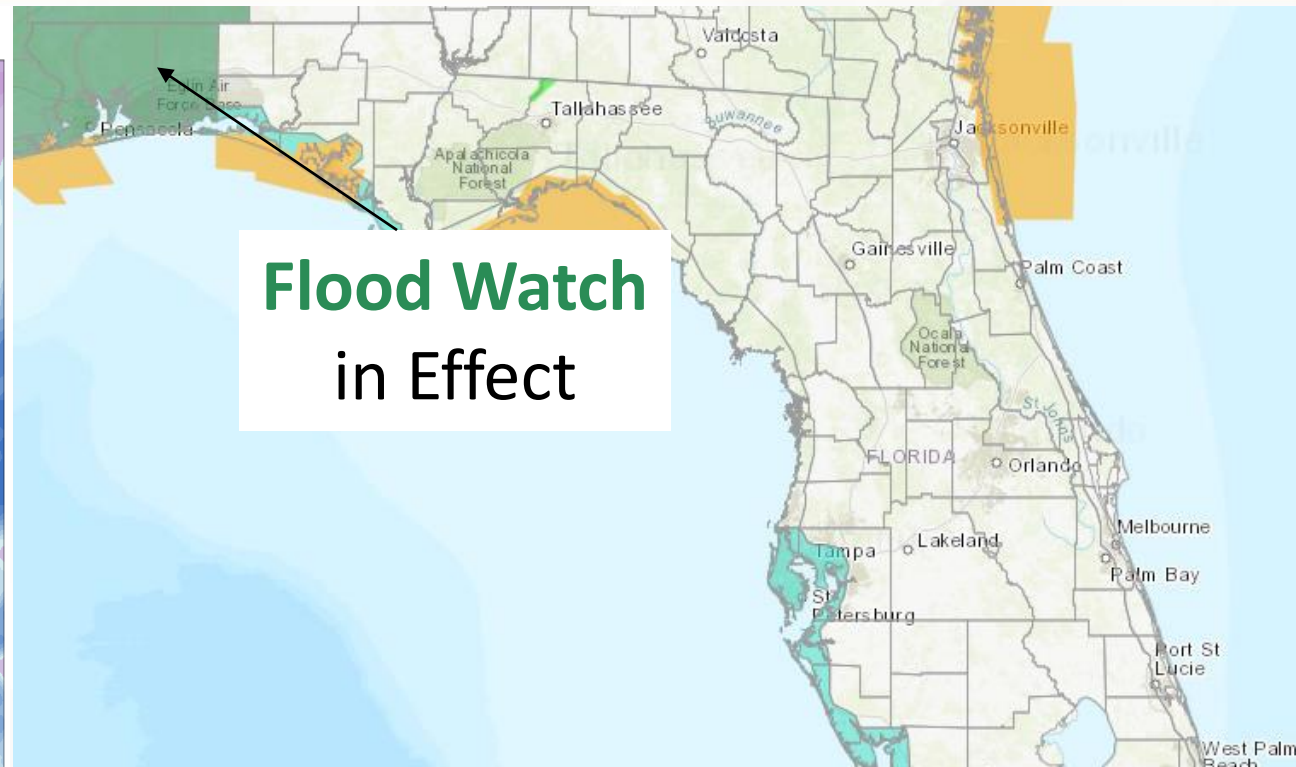
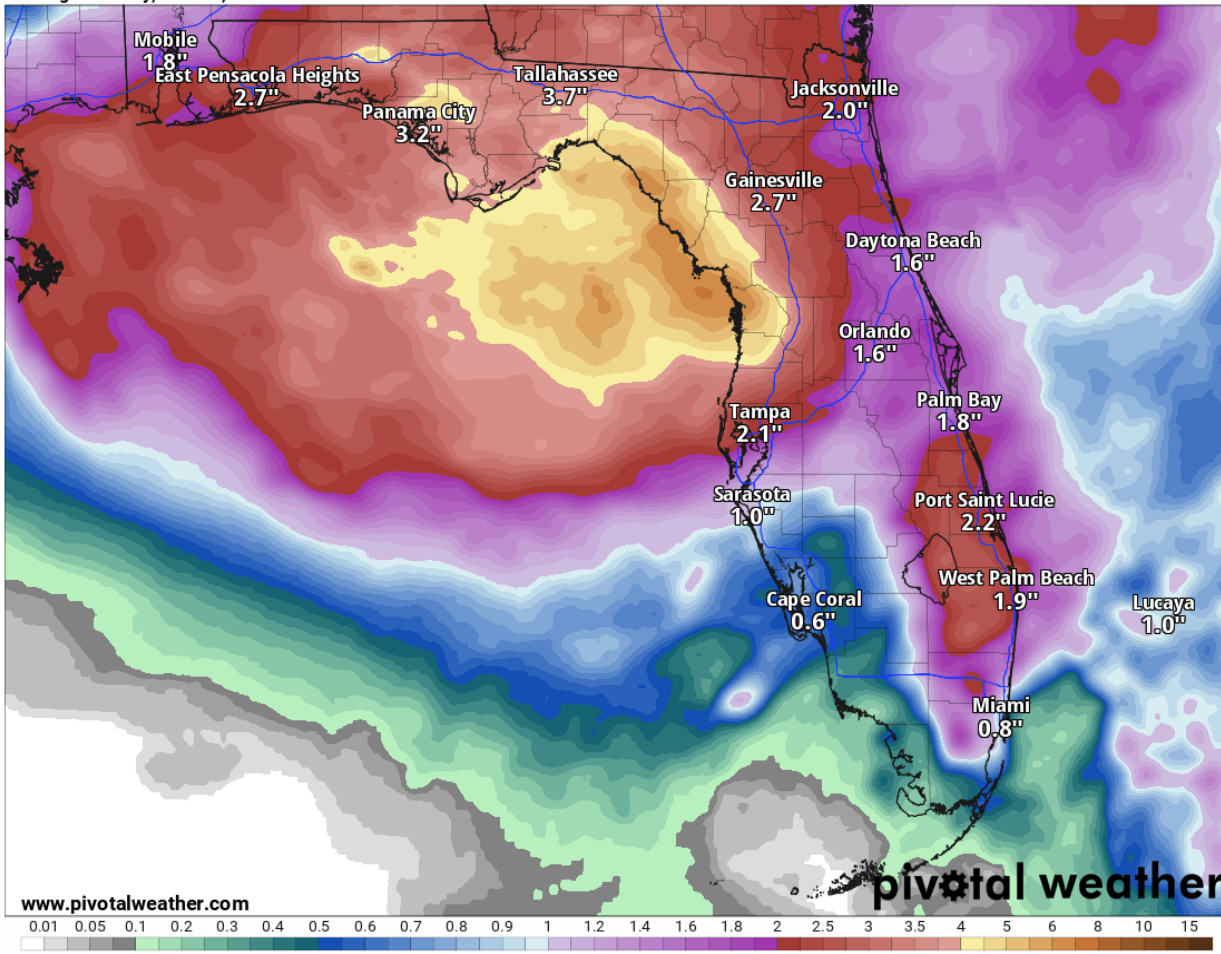
Flood Watch in Effect & 3-Day Forecast Rainfall

From the National Weather Service & Weather Prediction Center

72-Hour Precipitation (in)

Ending Thursday, Jun. 22, 2023 at 8 a.m. EDT

Init: Mon 2023-06-19 12z WPC

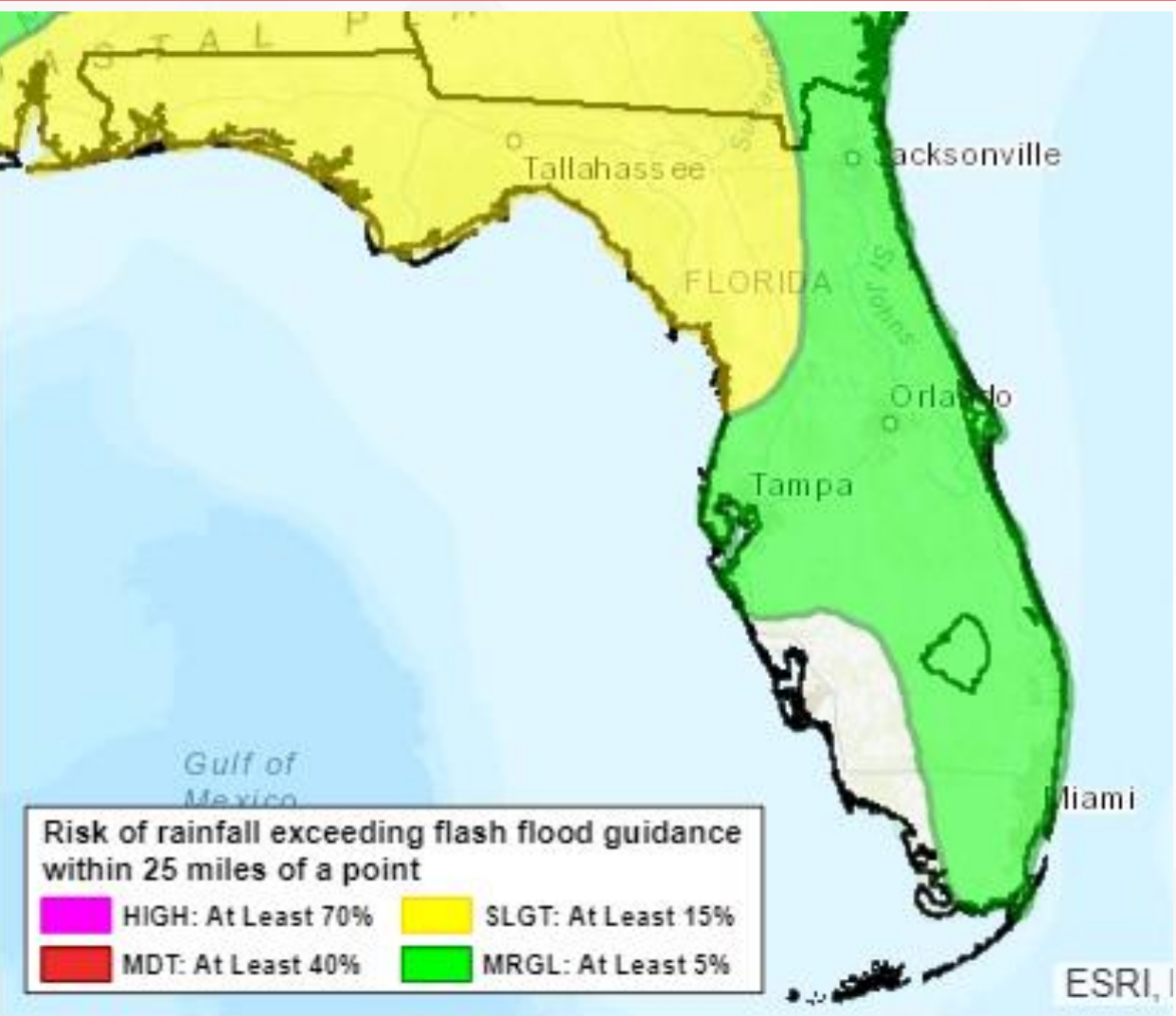


The anomalous and active weather pattern will continue to bring several rounds of heavy and intense downpours nearly statewide, but mostly across the Big Bend and Nature Coast over the next 3 days. A **Flood Watch** remains in place through this evening and into Tuesday morning for portions of the western Panhandle. Rainfall totals over the next 3 days will reach 3-6" across the Panhandle, Big Bend, and Nature Coast. Locally higher totals of 6-8" cannot be ruled out as heavy downpours could produce increased rainfall amounts.



Flash Flood Outlook - Today

From the Weather Prediction Center



Understanding WPC Excessive Rainfall Risk Categories

No Area/Label	MARGINAL (MRGL)	SLIGHT (SLGT)	MODERATE (MDT)	HIGH (HIGH)
Flash floods are generally not expected. @NWSWPC	Isolated flash floods possible Localized and primarily affecting places that can experience rapid runoff with heavy rainfall.	Scattered flash floods possible Mainly localized. Most vulnerable are urban areas, roads, small streams and washes. Isolated significant flash floods possible.	Numerous flash floods likely Numerous flash flooding events with significant events possible. Many streams may flood, potentially affecting larger rivers.	Widespread flash floods expected Severe, widespread flash flooding. Areas that don't normally experience flash flooding, could. Lives and property in greater danger.
Flash flooding near me?	<div>Flash Flooding</div> <div>NO Flash Flooding</div>			

Grounds and soils remain saturated after several days of heavy and intense rainfall across the Panhandle and North Florida. The Weather Prediction Center (WPC) is outlooking a **Slight Risk (level 2 of 4) for Flash Flooding** across the Panhandle and extending eastward into Nature Coast in anticipation of heavy and intense downpours continuing. A **Marginal Risk (level 1 of 4) for Flash Flooding** has been extended across Central Florida and along the eastern Peninsula as sea-breeze enhanced showers and thunderstorms will create heavy downpours. **Instances of ponding and localized flooding** will be possible over recently saturated grounds, as well as urban and low-lying/poor drainage areas.



Possible River Flooding

Chance of River Flooding Based on Range of Forecasted Rainfall

Based on forecast rainfall, **POSSIBLE** river crest levels next week

Chance of Exceedance		
30%	Level	70%
	Action	
	Minor Flood	
	Moderate Flood	
	Major Flood	
= less than 30% chance of reaching Action level		

Heavy and intense rainfall across the Panhandle and Big Bend have allowed several rivers and creeks to see an increase in water levels. Rises in water levels have been observed across the Apalachicola, Flint, Choctawhatchee, Ochlockonee, and Suwannee Basins are anticipated to rise into Action Stage (bank-full).

A **River Flood Warning** will go into effect later this evening for the [Ochlockonee River near Concord](#) as water levels will reach minor flood stage. Water levels are anticipated to crest overnight and slowly fall below flood stage by Tuesday evening. The [Aucilla River at Lamont](#) could also see minor flooding as water levels rise through the middle of the week.



Summary

Tropical Depression Three:

- With the 11:00 AM advisory, the National Hurricane Center has ungraded Invest 92L to Tropical Depression Three. The system is located about 1425 miles east of the southern Windward Islands and is moving west at 21 mph. Maximum sustained winds are 35 mph with higher gusts.
- A westward motion is expected to continue for the next several days and should be approaching the Lesser Antilles late this week.
- Some strengthening is forecast, and the depression is forecast to become a hurricane in a few days as environmental conditions appear conducive.
- There remains forecast uncertainty with Tropical Depression Three later this week as environmental conditions will contribute to its strengthening and its direction. The intensity forecast is more uncertain than normal due to the difference between computer model guidance and the climatological nature of this system.
- *Tropical Depression Three poses no direct threat to Florida over the next 5-7 days, at least.* The next name on the list is Bret (*bret*).

Invest 93L (Eastern Tropical Atlantic Wave):

- A tropical wave, located several hundred miles south-southwest of the Cabo Verde Islands, continues to produce a large area of disorganized showers and thunderstorms.
- Environmental conditions appear favorable for further development of this system, and a tropical depression could form in a couple days while the system moves westward at 10-15 mph across the eastern and central tropical Atlantic. *93L poses no threat to Florida over the next 7-10 days, at least.*

Florida Outlook:

- The active and anomalous weather pattern continues across North Florida as scattered to numerous showers and thunderstorms will continue today.
- The Storm Prediction Center (SPC) is outlooking a Slight Risk (level 2 of 5) for Severe Weather across the Panhandle and Big Bend as strong to severe thunderstorms are anticipated to continue through the afternoon and early evening hours. A Marginal Risk (level 1 of 5) is extended through Central Florida and along the eastern Peninsula.
- All modes of severe weather can be anticipated with strong to severe thunderstorms across the Panhandle and Big Bend. The primary threats include:
 - Frequent lightning, damaging wind gusts (45-60 mph), isolated tornadoes, hail (dime to quarter size, possibly ping pong size), and heavy downpours.
- The Weather Prediction Center (WPC) is outlooking a Slight Risk (level 2 of 4) for Flash Flooding across the Panhandle and towards Nature Coast, with a Marginal Risk (level 1 of 4) extends across Central Florida and the eastern Peninsula. Heavy and intense downpours can be expected to continue within stronger activity, leading to instances of ponding and localized flooding.
- Additional watches and warnings may be issued as conditions warrant; please ensure you have multiple ways to receive weather alerts!

The next briefing package will be issued on Tuesday. For the latest information, please visit the [National Hurricane Center website](#).



Tropical Update



Created by:

Kennedy Tartt, Assistant State Meteorologist

Kennedy.Tartt@em.myflorida.com

State Meteorological Support Unit

Florida Division of Emergency Management

Users wishing to subscribe (approval pending) to this distribution list, register at:

https://public.govdelivery.com/accounts/FLDEM/subscriber/new?topic_id=SERT_Met_Tropics.

Other reports available for subscription are available at:

<https://public.govdelivery.com/accounts/FLDEM/subscriber/new?preferences=true>