



Tropical Update



12:30 PM EDT

Sunday, October 2, 2022

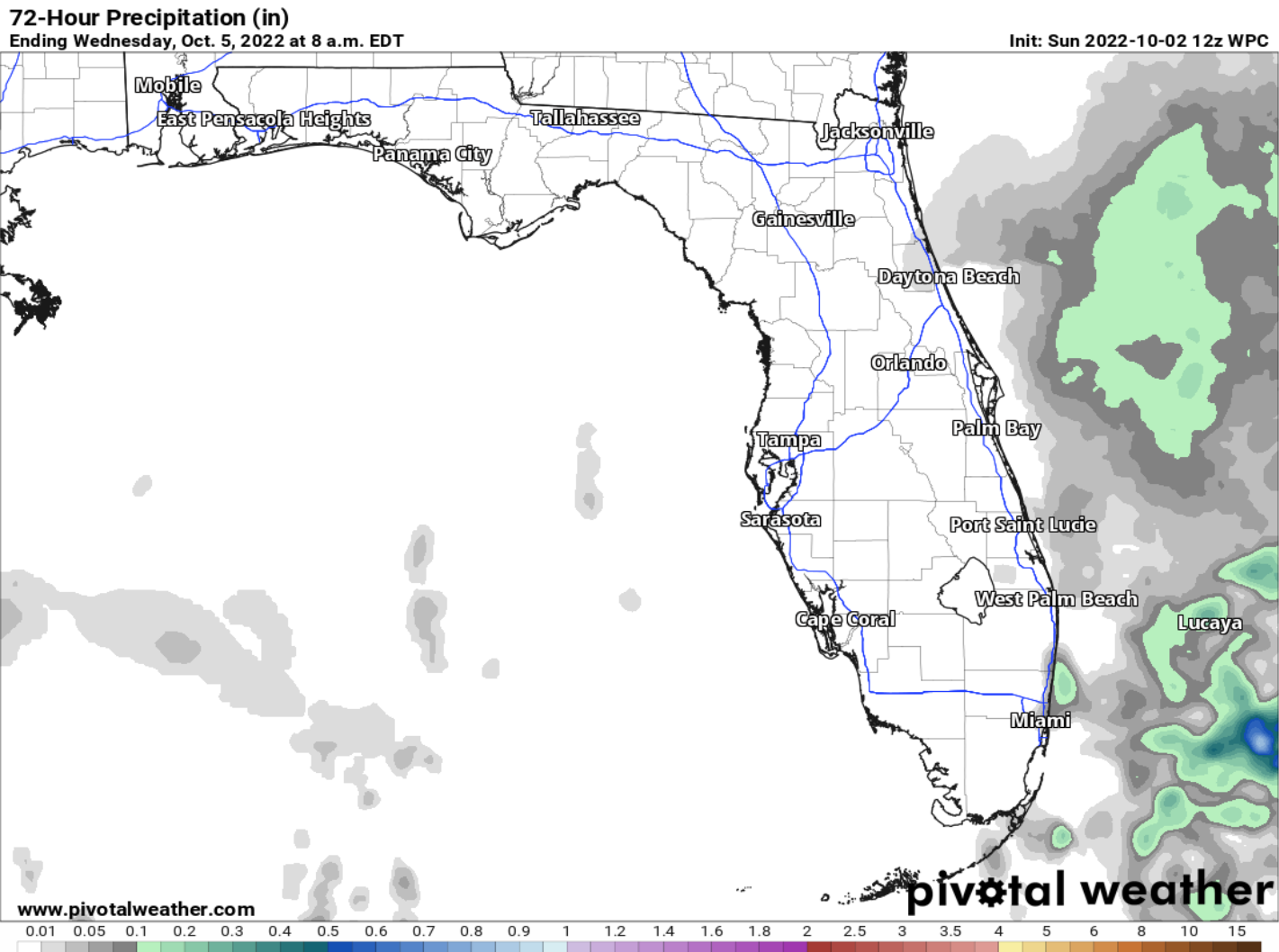
Ian Recovery Weather

This update is intended for government and emergency response officials, and is provided for informational and situational awareness purposes only. Forecast conditions are subject to change based on a variety of environmental factors. For additional information, or for any life safety concerns with an active weather event please contact your County Emergency Management or Public Safety Office, local National Weather Service forecast office, or visit the National Hurricane Center website at www.hurricanes.gov.



3-Day Forecast Rainfall

From the Weather Prediction Center

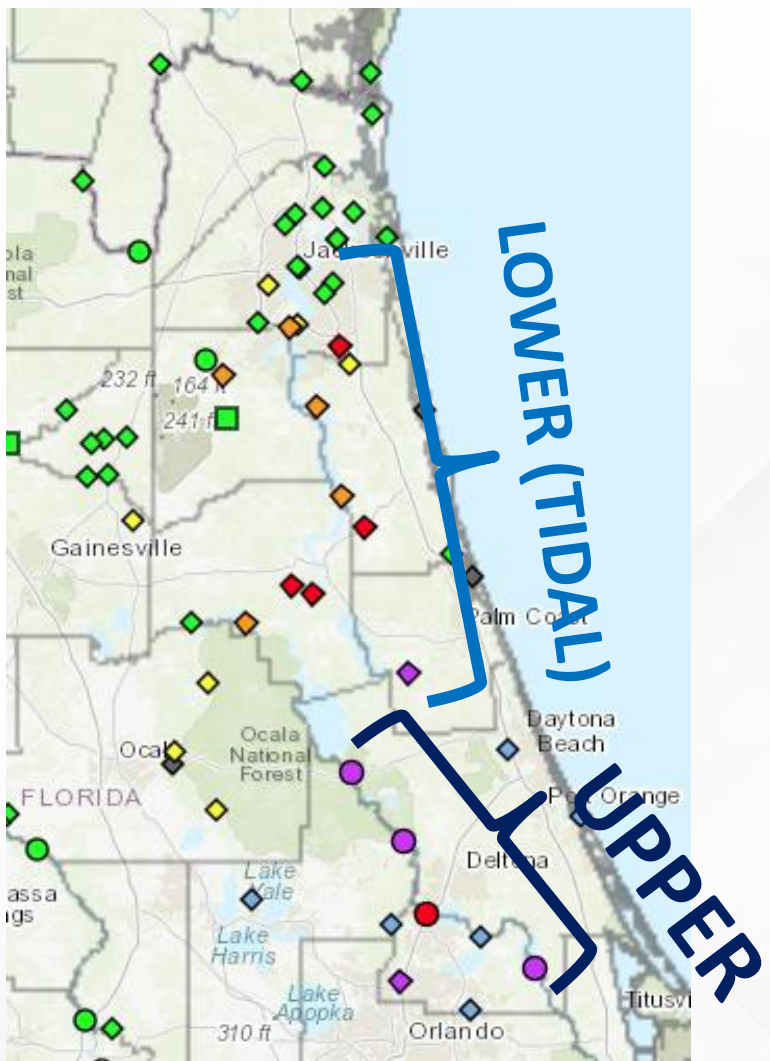
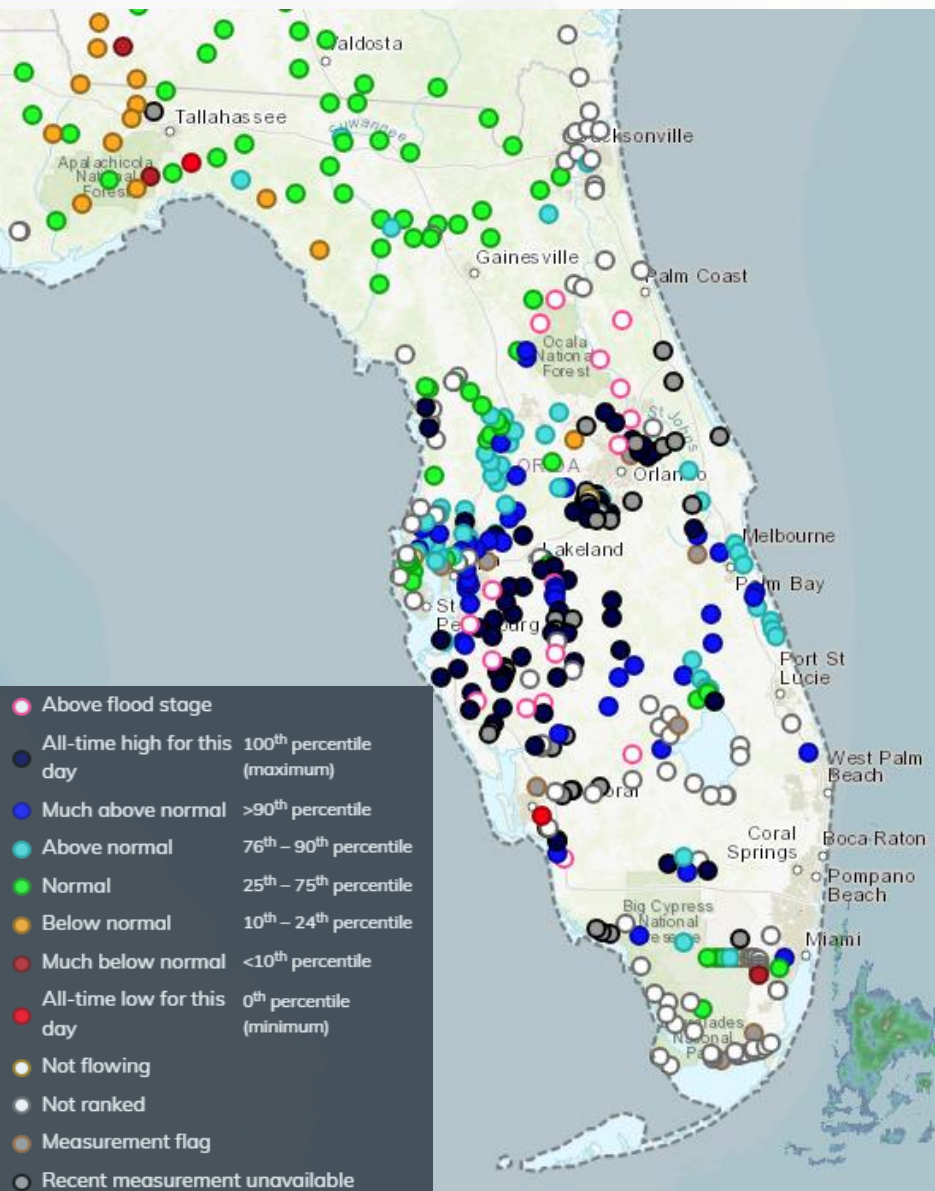


Over the next 72 hours, far coastal Southeast Florida may see 0.1-0.25” of rain, but the rest of the state remains dry.



Current River Streamflow Observations

As of Saturday Afternoon



Many rivers across the Peninsula and Northeast Florida are in or are forecast to reach **moderate to major flood** stage over the next several day. Several rivers reached or continue to run at above-record flood levels. Riverine flooding will likely continue, even despite the absence of rainfall in the forecast.



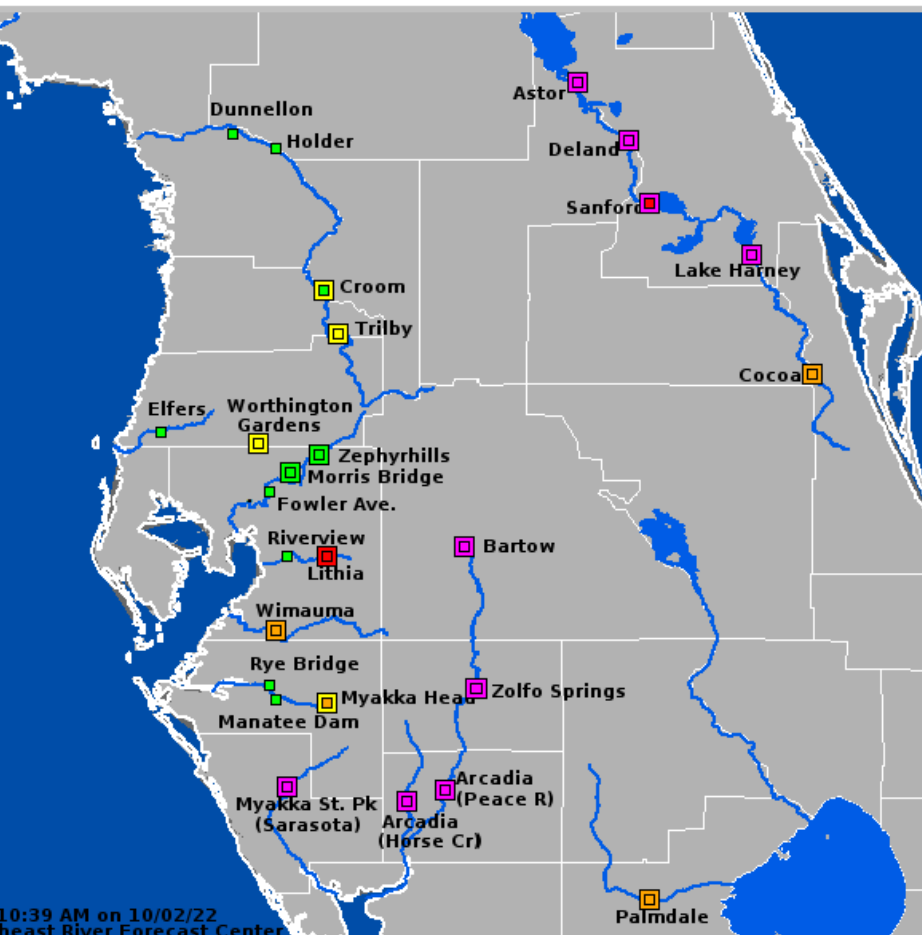
Latest River Forecasts

As of Sunday Morning

FOUO – For Government Official Use Only

Central Florida

Valid: 10/02/2022 @ 10:39 AM



10:39 AM on 10/02/22
East River Forecast Center

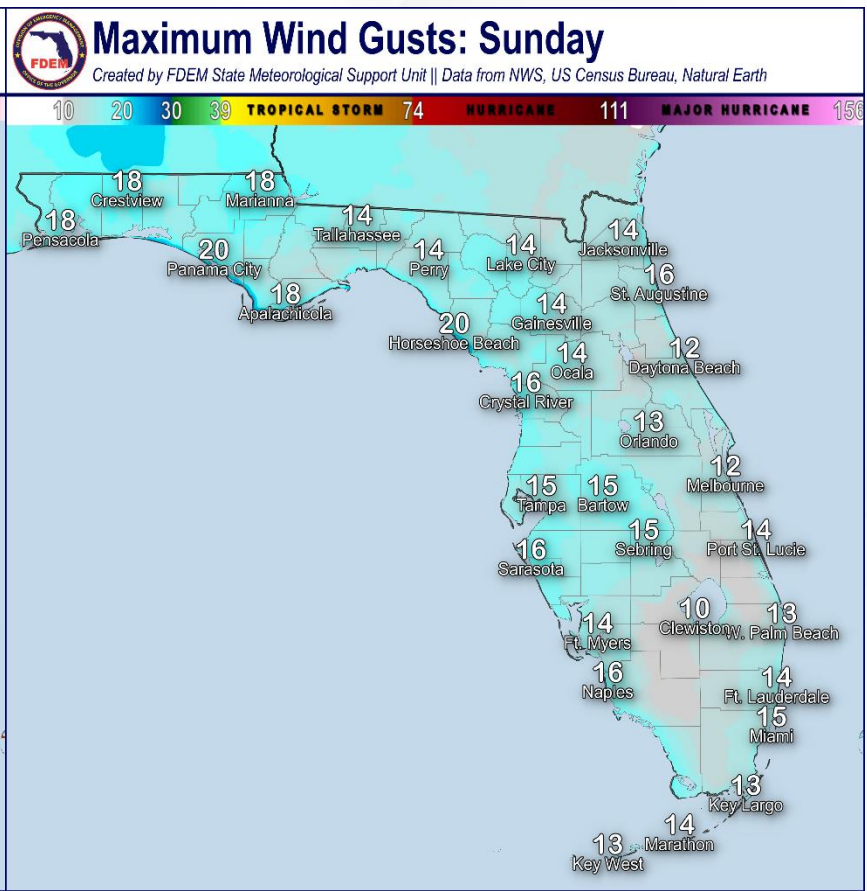
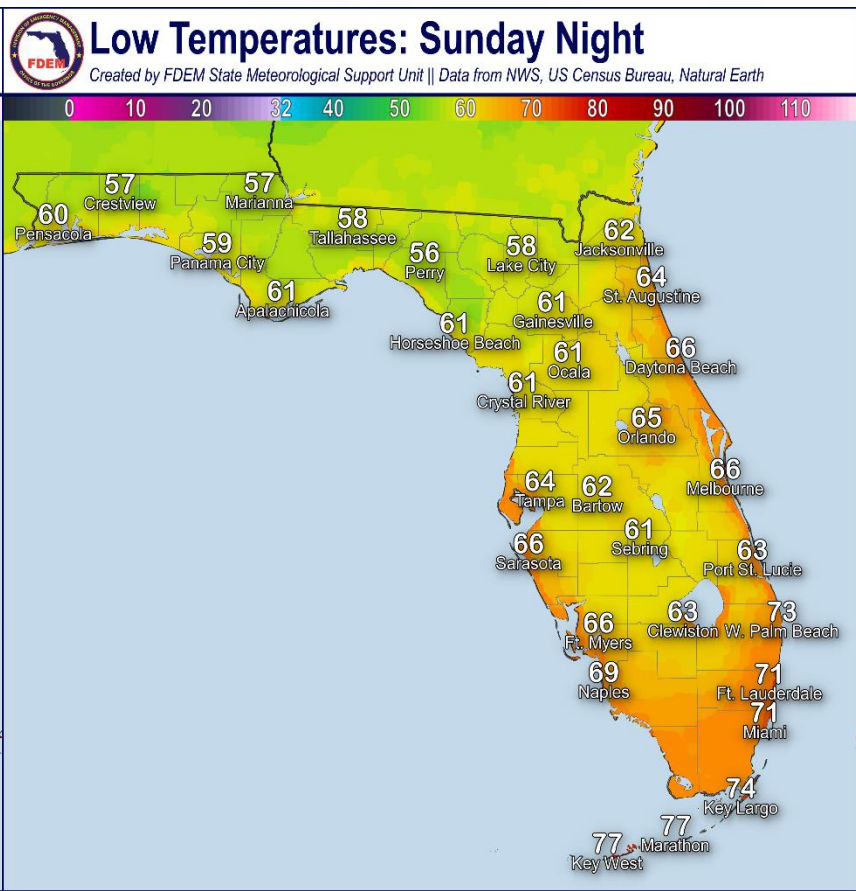
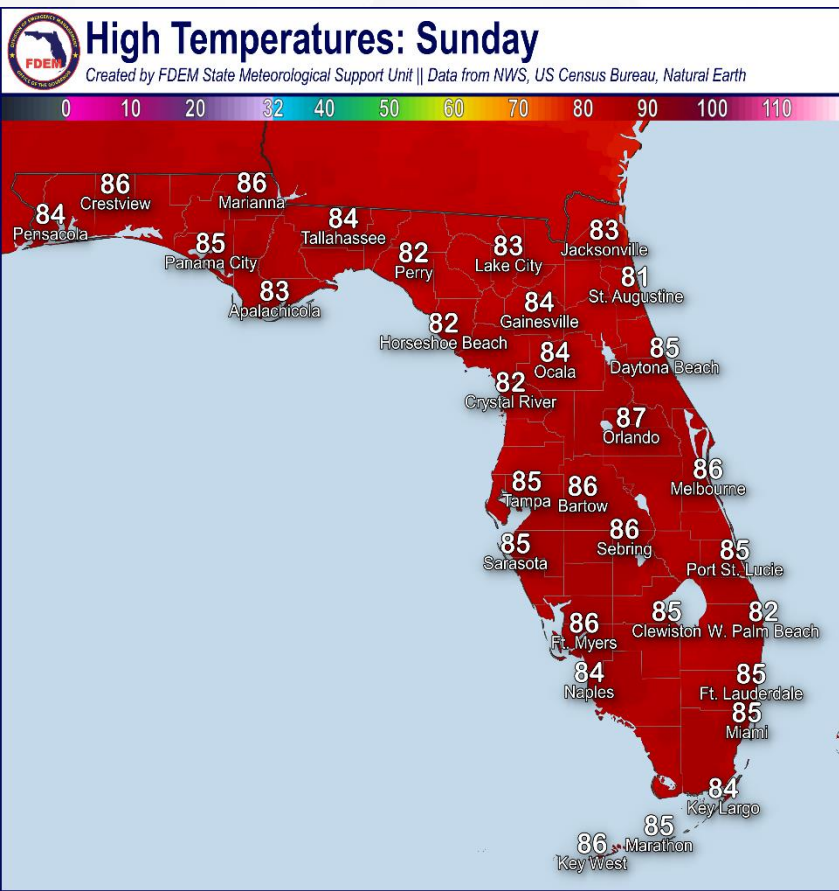
| River Gauges | County(ies) Affected | Status | Crest Level | Crest Day | Current Level | Below Flood Stage Day |
|--|-----------------------|----------|--------------------|-----------|---------------------|-----------------------|
| Fisheating Creek at Palmdale | Glades | FALLING | MINOR: 8.0 ft. | 10/1 | MINOR: 7.8 ft. | 10/6 |
| Horse Creek near Arcadia | Desoto | FALLING | RECORD: 21.24 ft. | 9/29 | MAJOR: 17.2 ft. | 10/7 |
| Peace River at Arcadia | Desoto | FALLING | RECORD: 23.91 ft. | 9/30 | RECORD: 22.82 ft. | Beyond 10/8 |
| Peace River at Zolfo Springs | Hardee | FALLING | RECORD: 27.2 ft. | 9/29 | MAJOR: 23.59 ft. | Beyond 10/8 |
| Peace River at Bartow | Polk | CRESTING | MAJOR: 10.8 ft. | 10/2 | MAJOR: 10.8 ft. | Beyond 10/8 |
| Myakka River at Myakka River State Park | Sarasota | CRESTING | RECORD: 12.7 ft. | 10/1 | RECORD: 12.36 ft. | Beyond 10/8 |
| Manatee River at Myakka Head | Manatee | FALLING | MAJOR: 19.3 ft. | 9/29 | MINOR: 11.43 ft. | 10/3 |
| Little Manatee River near Wimauma | Manatee, Hillsborough | FALLING | MAJOR: 17.56 ft. | 9/30 | MODERATE: 14.25 ft. | 10/4 |
| Alafia River at Lithia | Hillsborough | FALLING | MODERATE: 18.6 ft. | 10/1 | MODERATE: 16.97 ft. | 10/7 |
| Shingle Creek at Campbell | Osceola | CRESTING | RECORD: 64.21 ft. | 9/30 | RECORD: 64.07 ft. | Beyond 10/8 |
| Little Wekiva River near Altamonte Springs | Seminole, Orange | FALLING | RECORD: 31.09 ft. | 9/29 | RECORD 30.16 ft. | 10/4 |
| St. Johns River near Lake Harney | Seminole, Volusia | RISING | MAJOR: 12.3 ft. | 10/2 | MAJOR: 11.71 ft. | Beyond 10/8 |
| St. Johns River near Sanford | Seminole, Volusia | RISING | MODERATE: 7.6 ft. | 10/4 | MODERATE: 7.56 ft. | Beyond 10/8 |
| St. Johns River near Deland | Volusia, Lake | RISING | MAJOR: 6.0 ft. | 10/4 | MAJOR: 5.58 ft. | Beyond 10/8 |
| St. Johns River at Astor | Lake, Volusia | CRESTING | RECORD: 4.8 ft. | 10/2 | MAJOR: 4.57 ft. | Beyond 10/8 |

For more details on the hydrographs as well as impact statements, click the links for each river gauge.



Forecast Temperatures and Wind Gusts

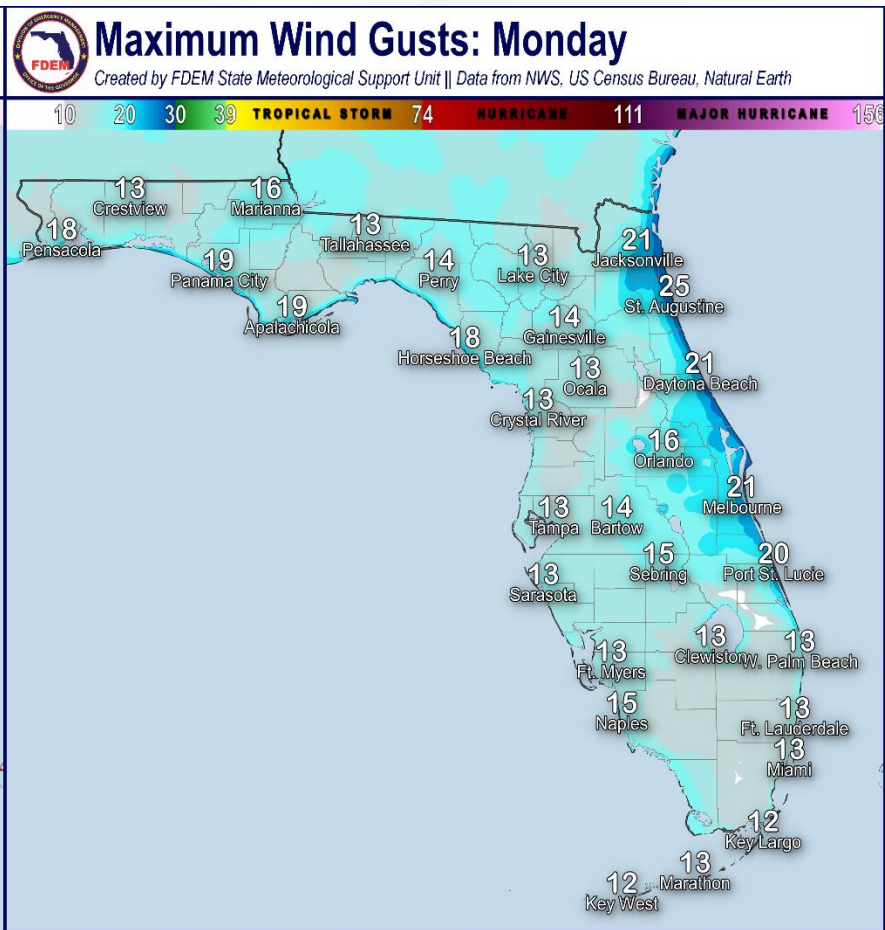
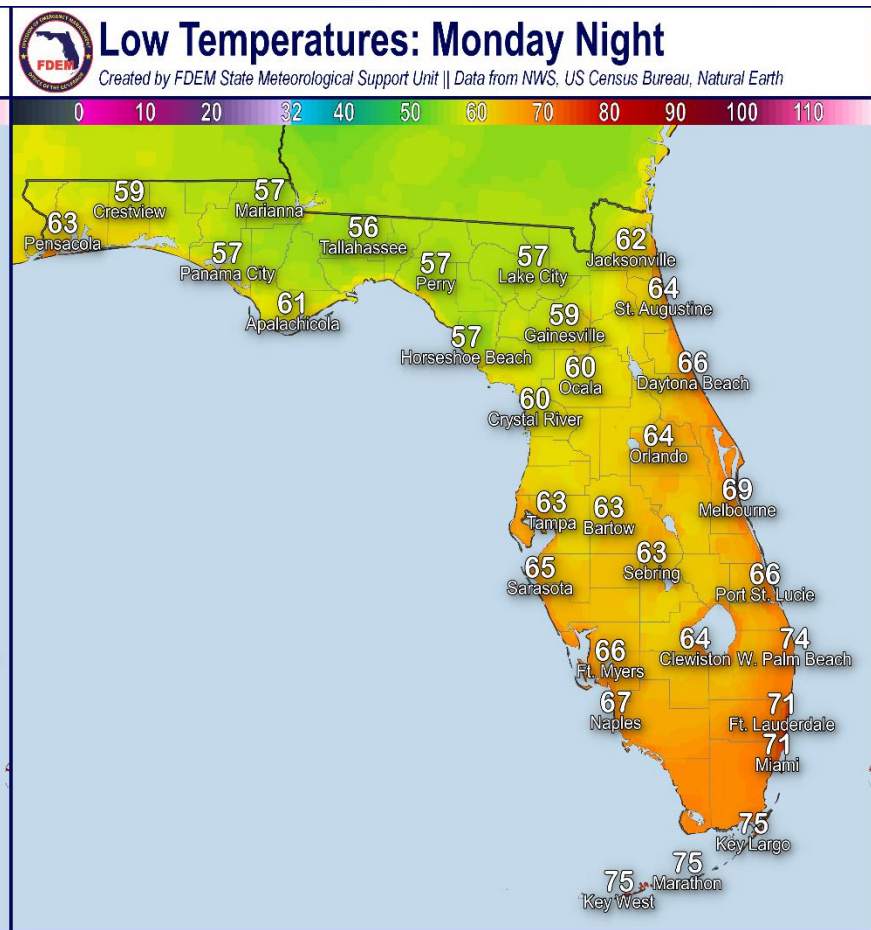
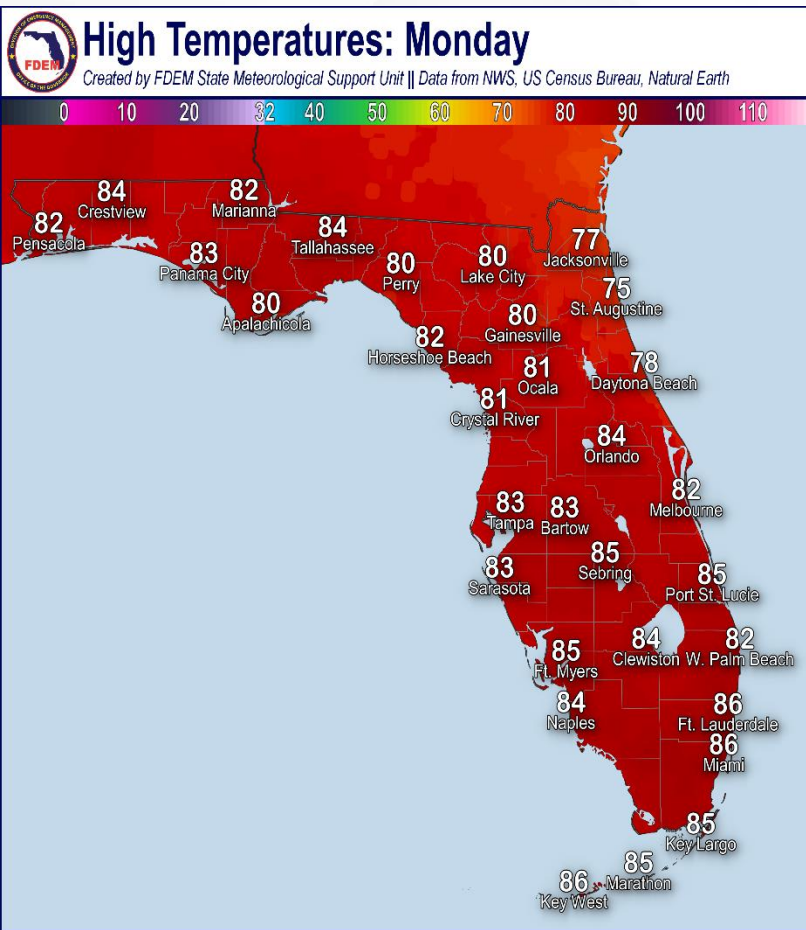
Sunday





Forecast Temperatures and Wind Gusts

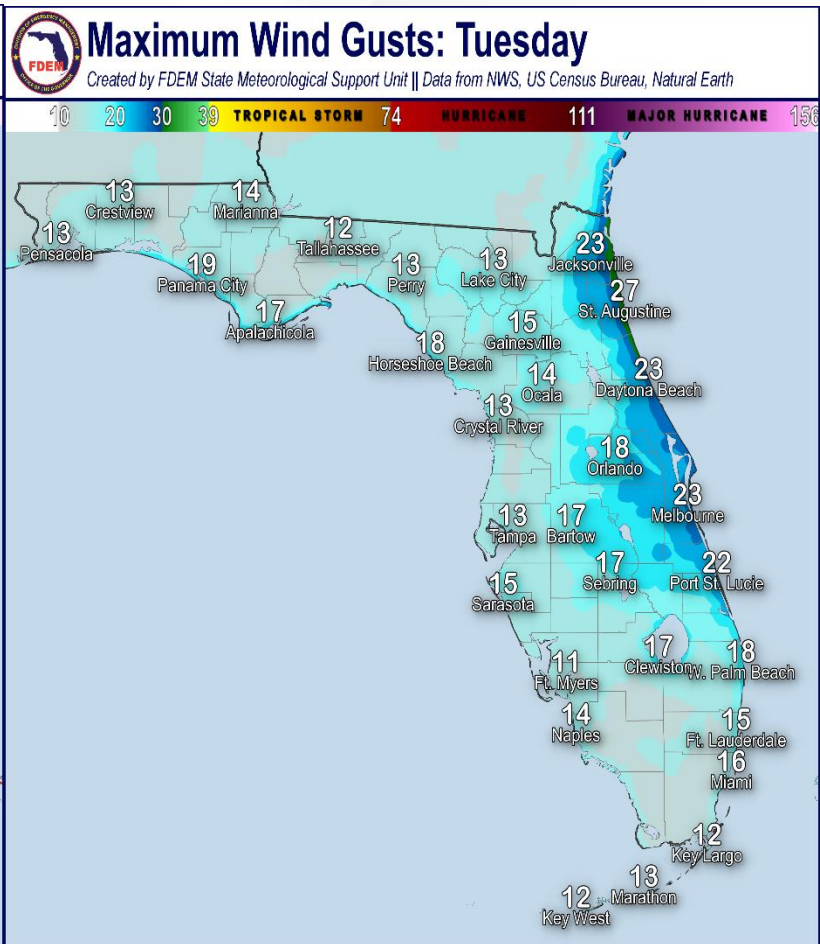
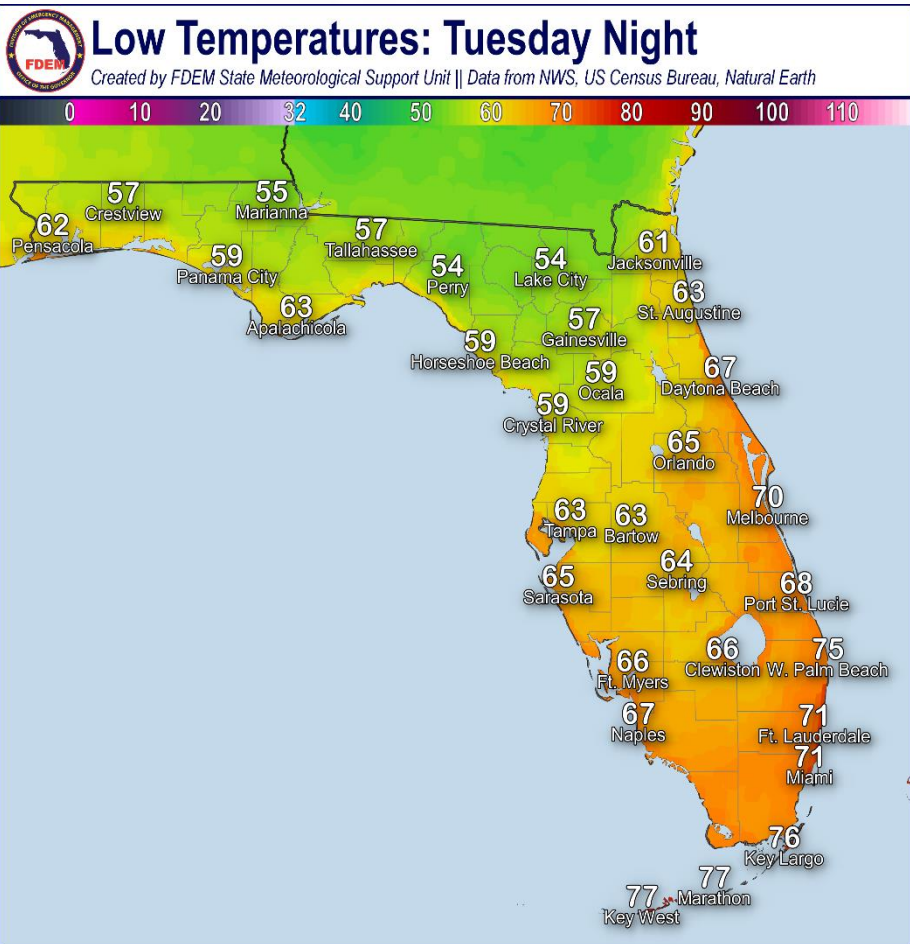
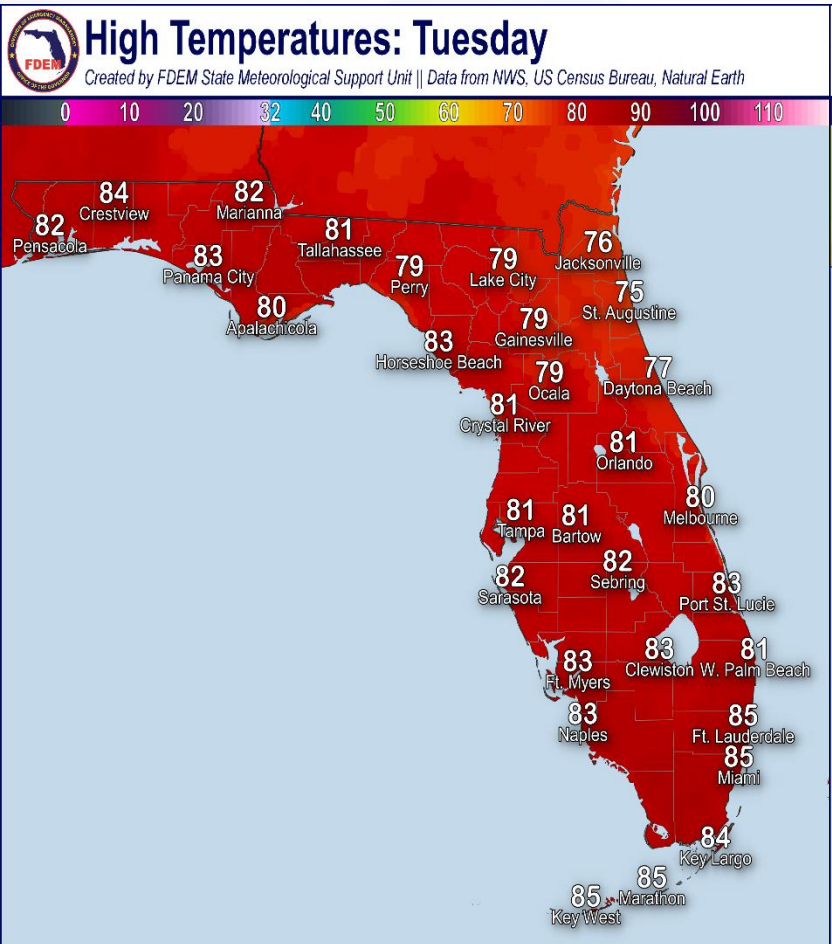
Monday





Forecast Temperatures and Wind Gusts

Tuesday





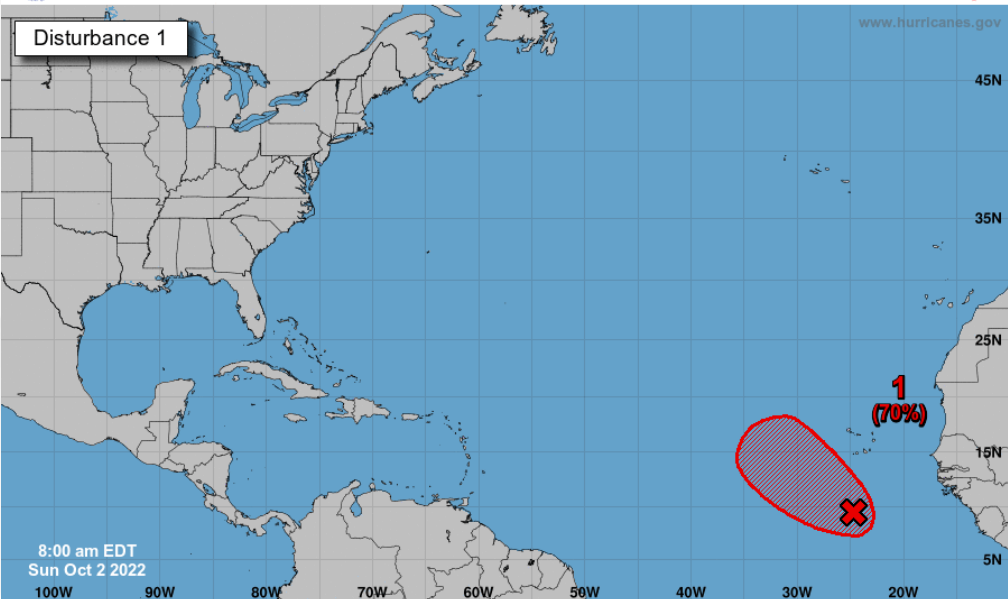
Tropical Weather Outlook

Disturbance 1 ([LINK](#))



Five-Day Graphical Tropical Weather Outlook

National Hurricane Center Miami, Florida

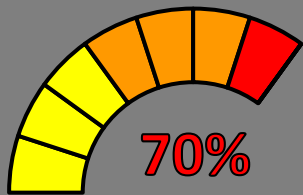


Current Disturbances and Five-Day Cyclone Formation Chance: < 40% 40-60% > 60%
Tropical or Sub-Tropical Cyclone: Depression Storm Hurricane
 Post-Tropical Cyclone or Remnants



30%

48 Hour Formation



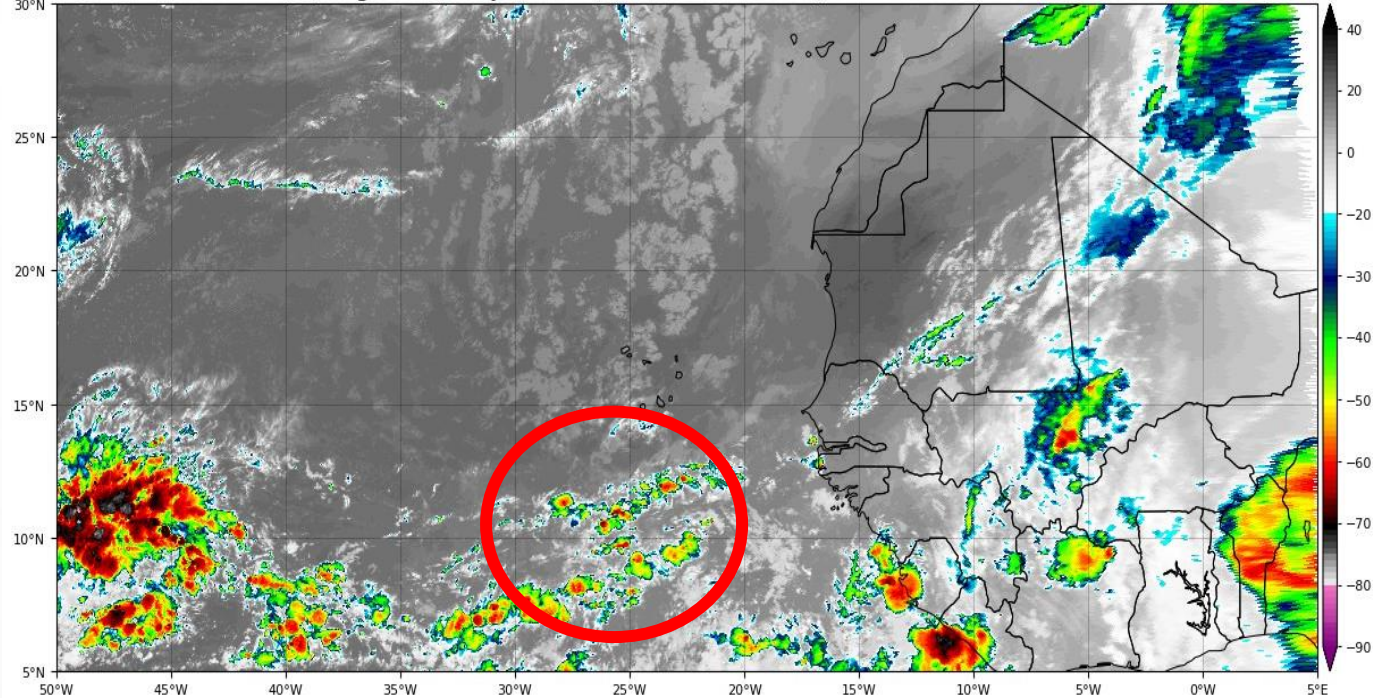
70%

5 Day Formation

A tropical wave continues to produce disorganized showers and thunderstorms off the coast of Africa. This activity has changed little in organization over the past day or so. Environmental conditions are forecast to be conducive for gradual development of this system, and a tropical depression is likely to form early next week as the system moves westward to west-northwestward or northward over the eastern tropical Atlantic. *This system poses no threat to Florida.*

GOES-16 Channel 13 (IR) Brightness Temperature (°C) at 10:25Z Oct 02, 2022

TROPICALTIDBITS.COM



FOUO – For Government Official Use Only



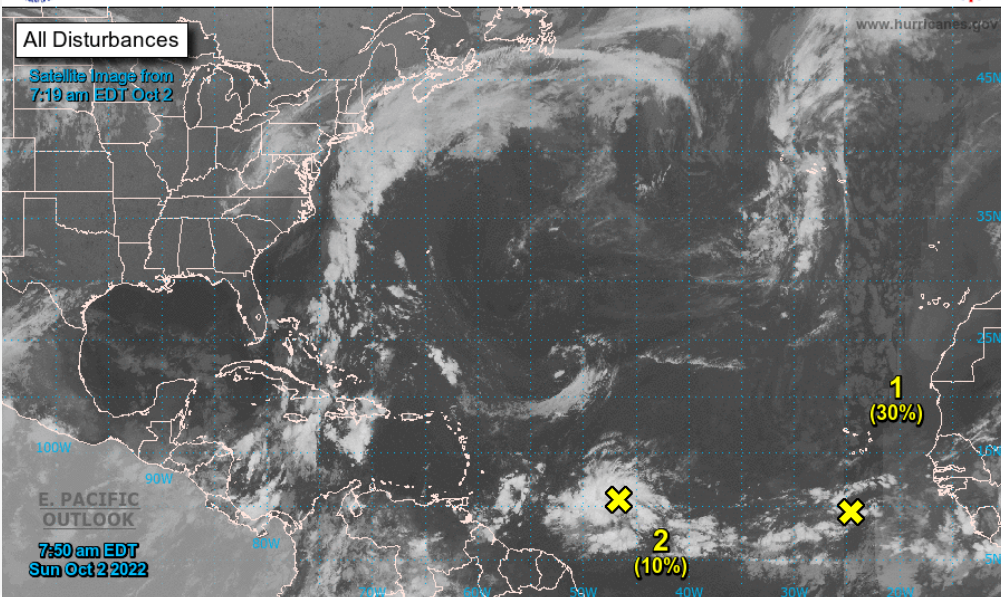
Tropical Weather Outlook

Disturbance 2 ([LINK](#))



Two-Day Graphical Tropical Weather Outlook

National Hurricane Center Miami, Florida



Current Disturbances and Two-Day Cyclone Formation Chance:
 Tropical or Sub-Tropical Cyclone: ○ Depression ○ Storm ○ Hurricane
 ○ Post-Tropical Cyclone or Remnants
 X < 40% X 40-60% X > 60%



10%

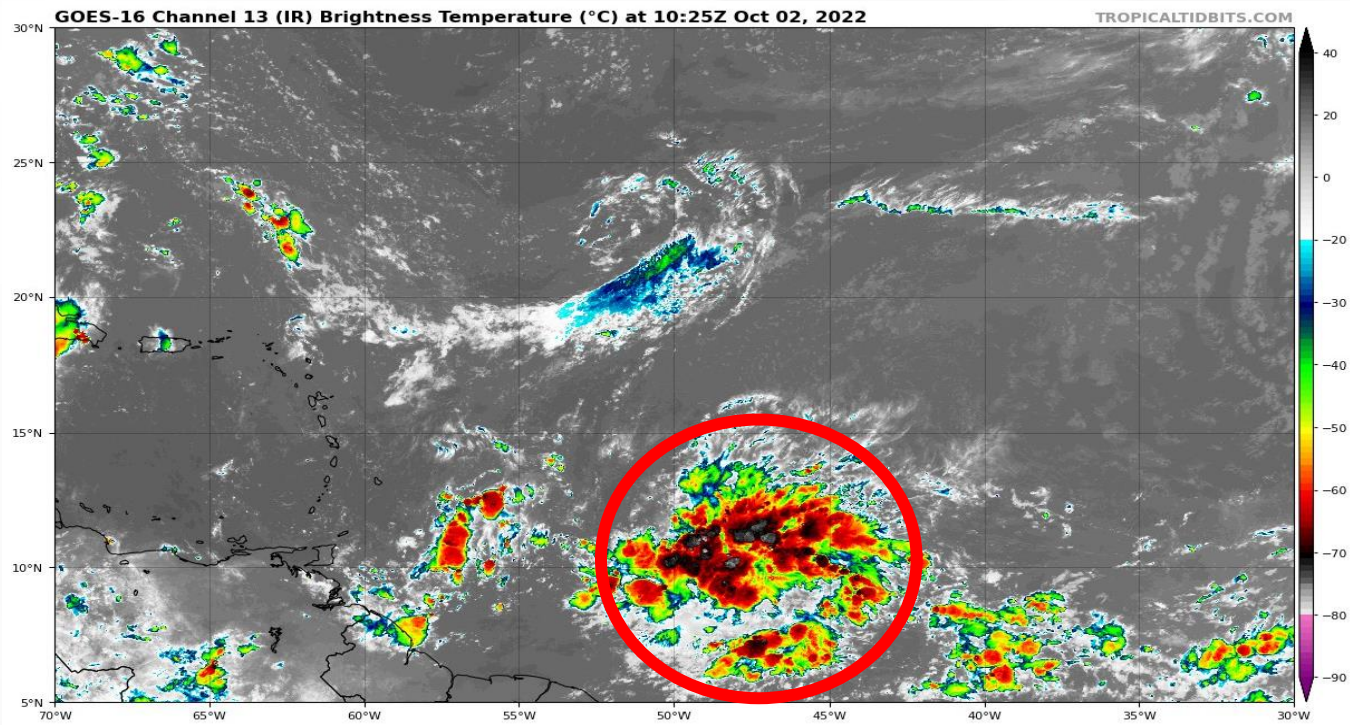
48 Hour Formation



20%

5 Day Formation

Showers and thunderstorms associated with a tropical wave is located several hundred miles east of the Windward Islands. Gradual development is possible over the next few days as the wave continues to move westward at 15-20 mph. *This system poses no threat to Florida.*



FOUO – For Government Official Use Only



Summary

Florida Outlook:

- Lingering coastal flooding will continue to affect the St. Johns River basin through this evening; **Coastal Flood Warnings** remain in effect until 8:00 PM EDT.
- Major to record river flooding is occurring along many West and Central Florida waterways, with additional flood concerns developing across Northeast Florida.
- Generally rain-free through late next week, with high temperatures in the middle to upper 80s statewide.

African Tropical Wave:

- A tropical wave is producing disorganized showers and thunderstorms off the coast of Africa.
- This activity has changed little in organization over the past day or so.
- Environmental conditions are forecast to be conducive for gradual development of this system, and a tropical depression is likely to form early next week as the system moves westward to west-northwestward over the eastern tropical Atlantic.
- The National Hurricane Center is Outlookting a 20% (low) chance of development over the next 48 hours, but a 70% (high) chance of development over the next 5 days.
- The African tropical wave poses no threat to Florida.

Central Tropical Wave:

- A tropical wave in the Central Tropical Atlantic is producing showers and thunderstorms several hundred miles from the Windward Islands.
- Gradual development is possible over the next few days as it moves westward at 15-20 mph.
- Formation chance over the next 48 hours remains at 10% (low) and 20% (low) over the next 5 days.
- This tropical wave poses no threat to Florida.

The next briefing packet will be issued Monday. For the latest information, please visit the [National Hurricane Center website](#).



Tropical Update

FOUO – For Government Official Use Only



Created by:

Kennedy Tartt, Assistant State Meteorologist

Kennedy.Tartt@em.myflorida.com

State Meteorological Support Unit

Florida Division of Emergency Management

Users wishing to subscribe (approval pending) to this distribution list, register at:

https://public.govdelivery.com/accounts/FLDEM/subscriber/new?topic_id=SERT_Met_Tropics.

Other reports available for subscription are available at:

<https://public.govdelivery.com/accounts/FLDEM/subscriber/new?preferences=true>