



# Tropical Update



6:00 PM EDT

Thursday, September 29, 2022

# Hurricane Ian

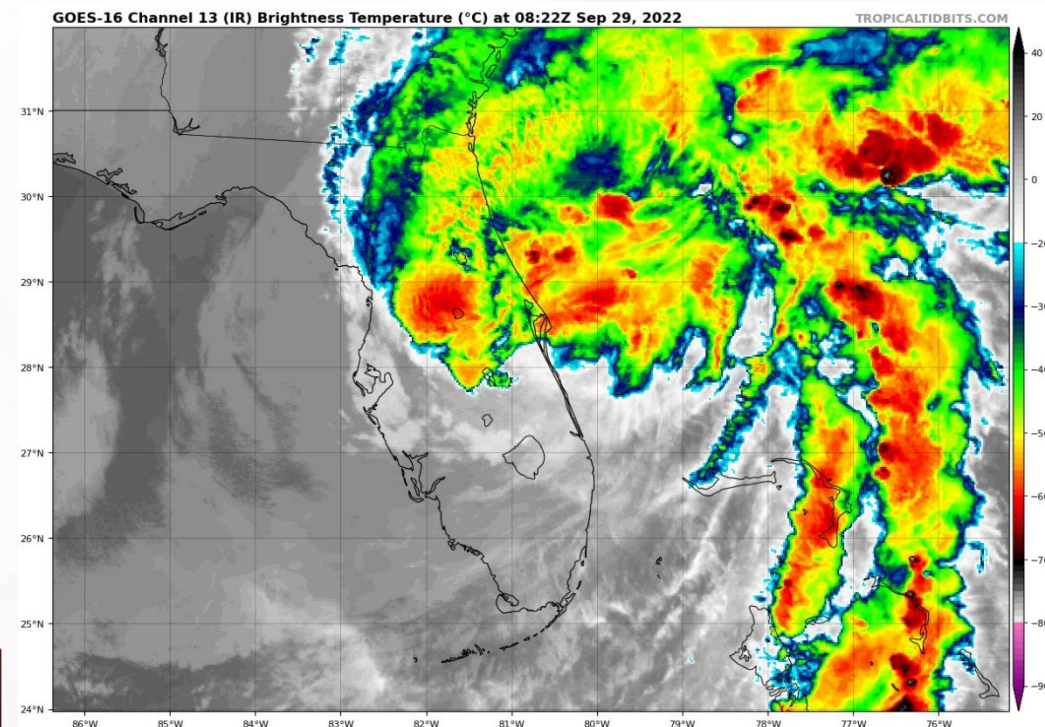
This update is intended for government and emergency response officials, and is provided for informational and situational awareness purposes only. Forecast conditions are subject to change based on a variety of environmental factors. For additional information, or for any life safety concerns with an active weather event please contact your County Emergency Management or Public Safety Office, local National Weather Service forecast office, or visit the National Hurricane Center website at [www.hurricanes.gov](http://www.hurricanes.gov).



# Hurricane Ian

5 PM Thursday: Florida Threats & Changes Since Last Packet

	MINIMAL	Low	MODERATE	HIGH	EXTREME
WINDS					
STORM SURGE					
FLOODING					
TORNADOES					
	Low	MODERATE	HIGH		
RIP CURRENTS					



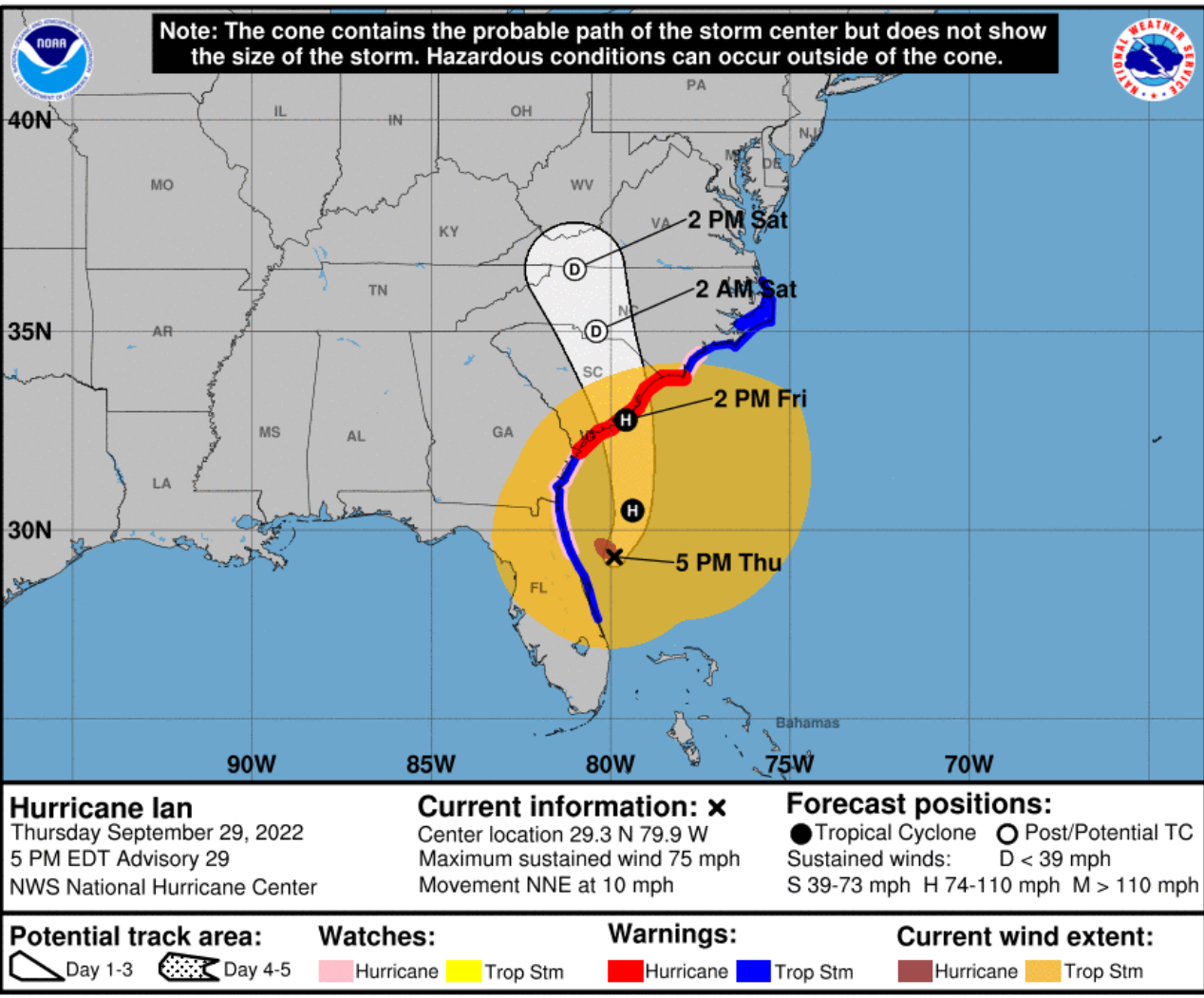
## Overview/Recent Changes:

Ian has re-strengthened into a hurricane over the Atlantic offshore of Cape Canaveral. Ian is moving to the northeast at 8 mph with maximum sustained winds of 75 mph.



# Forecast Cone

## Hurricane Ian ([LINK](#))



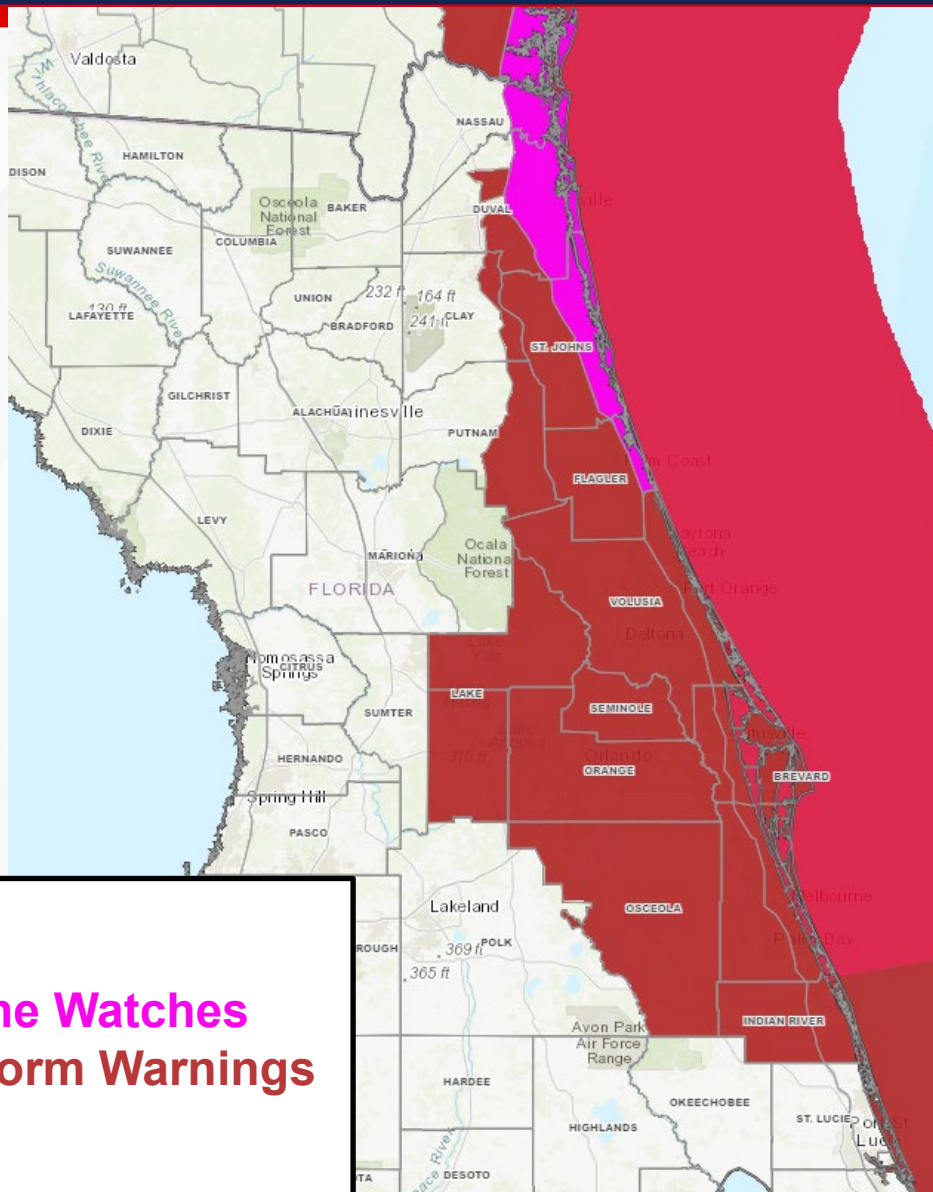
- **Location:** 240 miles S of Charleston, SC
- **Maximum Sustained Winds:** 75 mph
- **Current Movement:** NNE at 10 mph
- **FL Watches/Warnings:**
  - **Tropical Storm Warnings & Hurricane Watch:** Flagler/Volusia Line northward

Ian will turn back to the north and northwest, making landfall in South Carolina Friday. Impacts to Florida will slowly decrease.

Tropical storm-force winds extend outward up to 415 miles from the center. Hurricane force winds extend out 45 miles from the center. Winds are decreasing across the state, but the strongest winds remain along the Northeast Florida coast.



# Active Tropical Watches/Warnings



**Hurricane Watches**  
**Tropical Storm Warnings**

## Hurricane Watch:

Coastal Nassau, coastal Duval, coastal St. Johns, coastal Flagler, coastal Flagler

## Tropical Storm Warning:

Inlands Duval, inland St. Johns, eastern Clay, eastern Putnam, inland Flagler, Volusia, Brevard, Seminole, Lake, Orange, Osceola, Indian River





# Key Messages

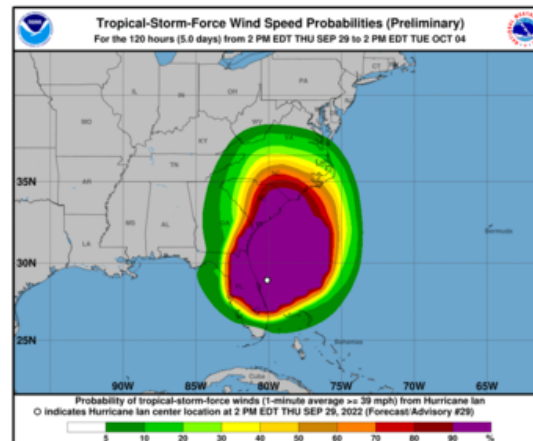
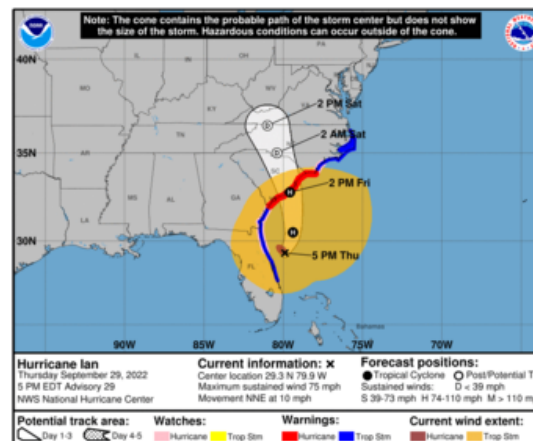
## From the National Hurricane Center



### Key Messages for Hurricane Ian Advisory 29: 5:00 PM EDT Thu Sep 29, 2022



1. There is a danger of life-threatening storm surge through Friday along the coasts of northeast Florida, Georgia, and South Carolina. Residents in these areas should follow any advice given by local officials.
2. Hurricane-force winds are expected across coasts of South Carolina and southeastern North Carolina beginning early Friday, where a Hurricane Warning is in effect. Hurricane conditions are possible by tonight along the coasts of northeastern Florida, Georgia, and North Carolina where a Hurricane Watch is in effect. Preparations should be rushed to completion since tropical-storm-force winds will begin well before the center approaches the coast.
3. Ongoing major-to-record river flooding will continue across portions of central Florida, with considerable flooding in northern Florida. Considerable flash and urban flooding is expected across coastal portions of northeast Florida through Friday. Local significant flooding in southeastern Georgia and eastern South Carolina is expected through the end of the week.

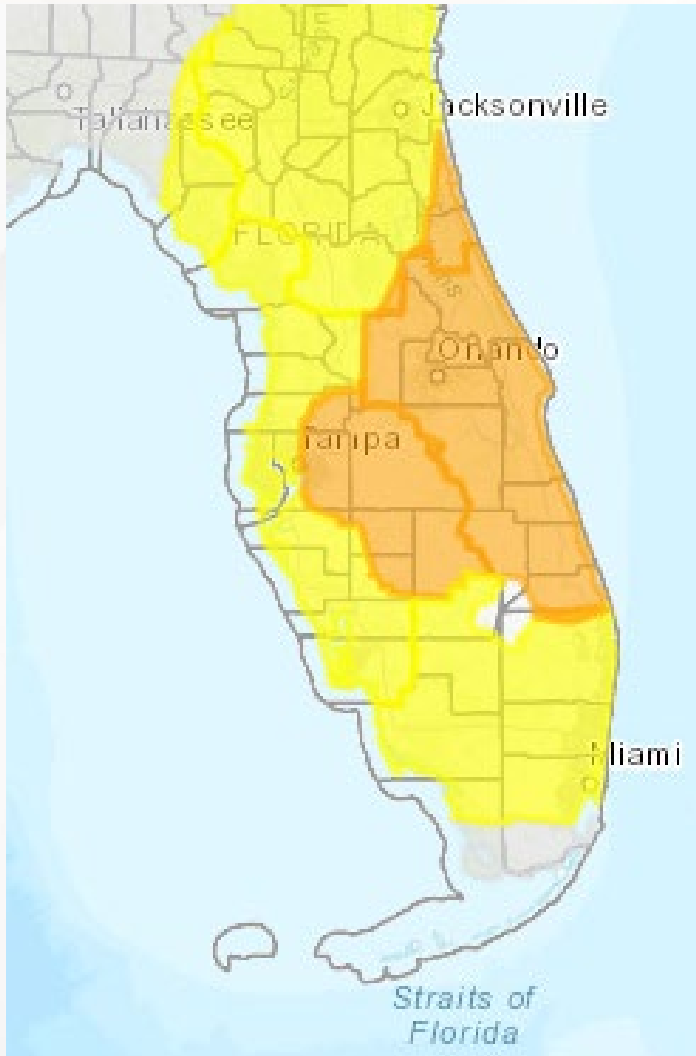


For more information go to [hurricanes.gov](https://hurricanes.gov)



# Damaging Wind Threat Overview

## Hurricane Ian



The potential for damaging winds, strong tropical-force winds, will continue along the central and eastern Florida Peninsula.

[https://www.weather.gov/srh/tropical?  
office=mfl](https://www.weather.gov/srh/tropical?office=mfl)

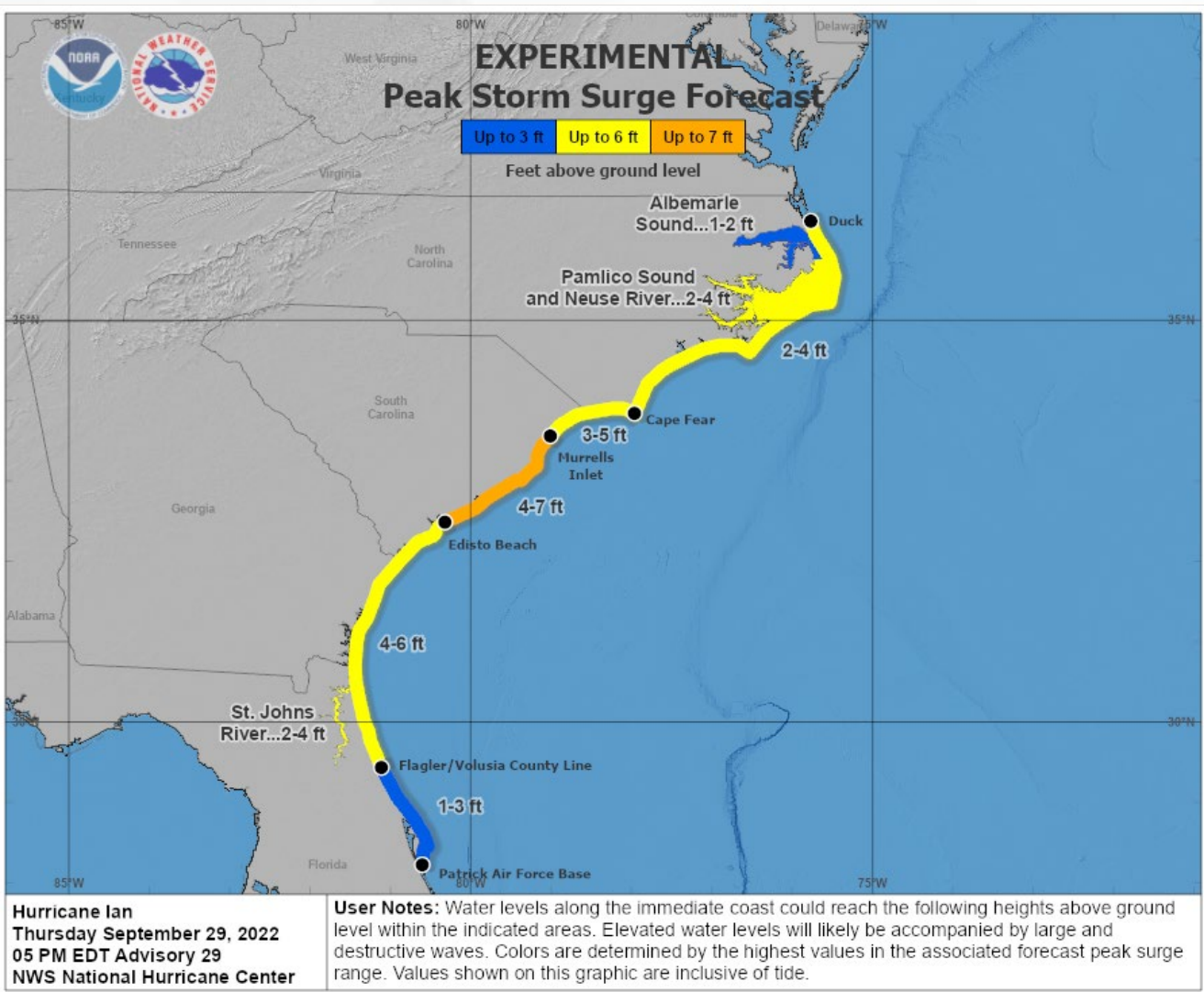
Click on “Threats and Impacts” Tab

Wind Threat
Potential for wind greater than 110 mph
Potential for wind 74 to 110 mph
Potential for wind 58 to 73 mph
Potential for wind 39 to 57 mph
Wind less than 39 mph



# Surge Watches and Warnings

In Effect Until Further Notice



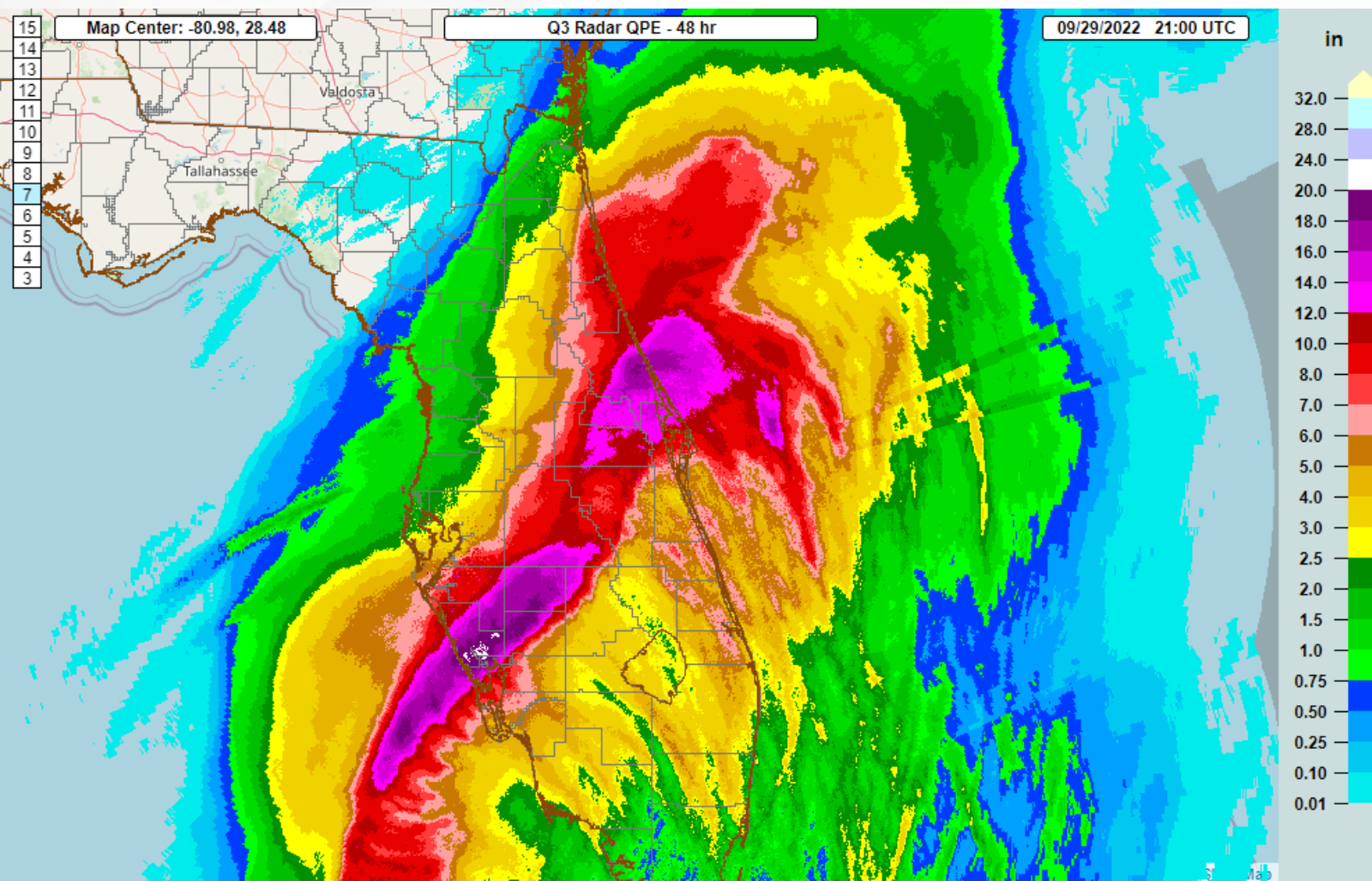
**Storm Surge Warnings** are in effect from the Flagler/Volusia Line northward, including the St. Johns River







# 48-Hour Rainfall Totals



Widespread rainfall totals of 10-20" have been observed along the I-4 corridor.





# Latest River Forecasts

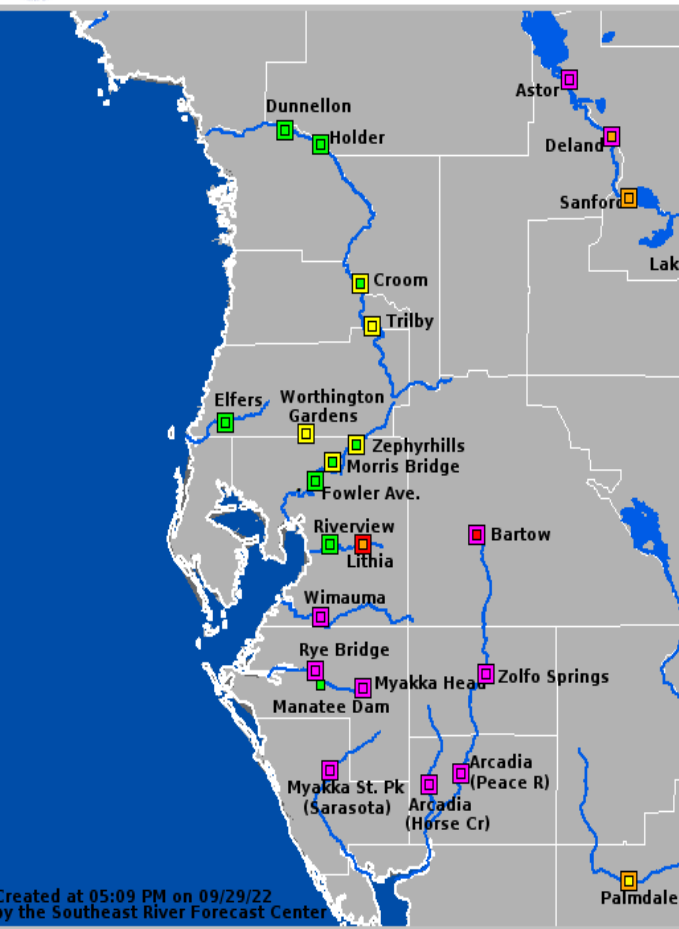
As of Thursday Evening

FOUO – For Government Official Use Only



## Central Florida

Valid: 09/29/2022 @ 05:09 PM



Created at 05:09 PM on 09/29/22  
by the Southeast River Forecast Center

River Gauges	County(ies) Affected	Status	Crest Level	Crest Day	Current Level	Below Flood Stage Day
<a href="#">Fisheating Creek at Palmdale</a>	Glades	RISING	MINOR: 7.4 ft.	10/1	ACTION: 6.9 ft.	10/4
<a href="#">Horse Creek near Arcadia</a>	Desoto	FALLING	RECORD 21.24ft.	9/29	RECORD 21.23 ft.	10/8
<a href="#">Peace River at Arcadia</a>	Desoto	RISING	RECORD: 21.4 ft.	9/30	MAJOR: 21.1 ft.	Beyond 10/8
<a href="#">Peace River at Zolfo Springs</a>	Hardee	CRESTING	RECORD: 27.2 ft.	9/29	RECORD: 27.1 ft.	10/5
<a href="#">Peace River at Bartow</a>	Polk	RISING	MAJOR: 10 ft.	10/2	MODERATE: 9.7 ft.	Beyond 10/8
<a href="#">Myakka River at Myakka River State Park</a>	Sarasota	RISING	RECORD: 13 ft.	9/30	MAJOR: 11.4 ft.	Beyond 10/8
<a href="#">Manatee River at Myakka Head</a>	Manatee	FALLING	MAJOR: 19.3 ft.	9/28	MAJOR: 18.5 ft.	10/2
<a href="#">Manatee River at Rya Bridge</a>	Manatee	FALLING	MAJOR: 17.2 ft.	9/28	MAJOR: 16.2 ft	10/2
<a href="#">Little Manatee River near Wimauma</a>	Manatee, Hillsborough	RISING	MAJOR: 18.4 ft.	9/30	MAJOR: 17.4 ft.	10/4
<a href="#">Alafia River at Lithia</a>	Hillsborough	RISING	MODERATE: 17.9 ft.	10/1	MODERATE: 16 ft.	10/5

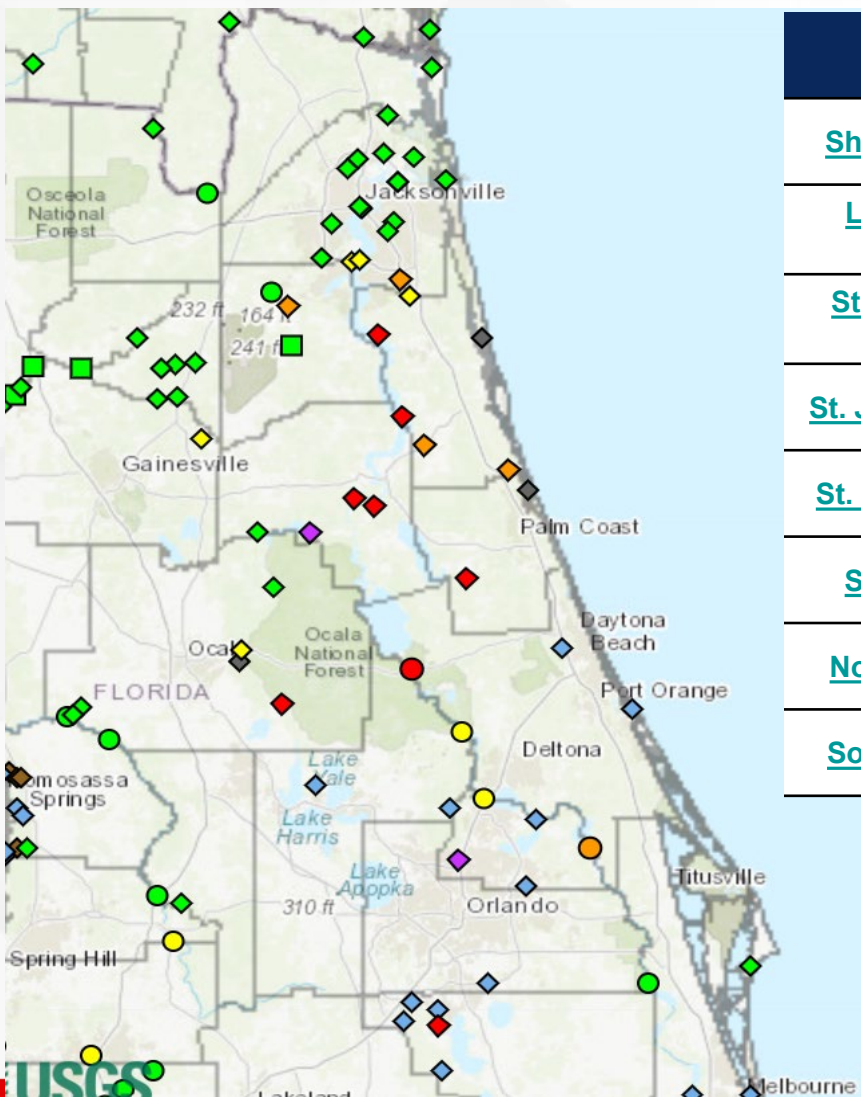
For more details on the hydrographs as well as impact statements, click the links for each river gauge.



# Latest River Forecasts

As of Thursday Evening

FOUO – For Government Official Use Only



River Gauges	County(ies) Affected	Status	Crest Level	Crest Day	Current Level	Below Flood Stage Day
<a href="#">Shingle Creek at Campbell</a>	Osceola	CRESTING	RECORD: 62.9 ft.	9/29	MAJOR: 62.9 ft.	10/1
<a href="#">Little Wekiva River near Altamonte Springs</a>	Seminole, Orange	CRESTING	RECORD: 31.1 ft.	9/29	RECORD 30.8 ft.	10/1
<a href="#">St. Johns River near Lake Harney</a>	Seminole, Volusia	RISING	MAJOR: 10.7 ft.	10/3	MODERATE: 9.5 ft.	Beyond 10/8
<a href="#">St. Johns River near Sanford</a>	Seminole, Volusia	RISING	MINOR: 6.5 ft.	10/3	MINOR: 5.8 ft.	Beyond 10/8
<a href="#">St. Johns River near Deland</a>	Volusia, Lake	RISING	MAJOR: 5.6 ft.	10/4	MINOR: 4.6 ft.	Beyond 10/8
<a href="#">St. Johns River at Astor</a>	Lake, Volusia	RISING	RECORD: 4.6 ft.	9/30	MODERATE: 3.7 ft.	Beyond 10/8
<a href="#">North Fork of Black Creek</a>	Clay	RISING	NO FLOOD: 6.6 ft.	9/30	NO FLOOD: 3.4 ft.	N/A
<a href="#">South Fork of Black Creek</a>	Clay	RISING	NO FLOOD: 8.9 ft.	9/30	NO FLOOD: 3.5 ft.	N/A

For more details on the hydrographs as well as impact statements, click the links for each river gauge.



# Summary

## Hurricane Ian:

- At 5:00 PM EDT, Ian was located about 240 miles south of Charleston, South Carolina, and moving north-northeast at 10 mph.
- A turn toward the north is expected tonight, followed by a turn toward the north-northwest with an increase in forward speed Friday night. Ian will approach the coast of South Carolina on Friday, and move inland across the Carolinas Friday night and Saturday.
- Maximum sustained winds have increased to near 75 mph, and Ian has re-strengthened into a Category 1 hurricane.
- Hurricane-force winds extend outward up to 45 miles from the center, and tropical storm-force winds extend outward up to 415 miles.

## Florida Outlook:

- **Tropical Storm Warnings** remain in effect along portions of the Northeast Florida Coast.
- A **Hurricane Watch** remains in effect for the Flagler/Volusia coastline northward.
- A **Storm Surge Warning** is in effect from the Flagler/Volusia countyline northward, including the St. Johns River.
- Dangerous storm surge is ongoing along Florida's Northeast Coast and St. Johns River. Storm surge values of 4-6' are forecast along the Northeast Florida Coast. Surge values of 2-4' are forecast along the St. Johns River.
- Widespread rainfall totals of 10-20" have been observed along the I-4 corridor, yielding catastrophic flooding across Florida's Peninsula.
- Major to record river flooding is occurring along many West and Central Florida waterways, with additional flood concerns developing across Northeast Florida.

The next briefing packet will be issued following the 5:00 AM Advisory. For the latest information, please visit the [National Hurricane Center website](#).





# Tropical Update

FOUO – For Government Official Use Only



Created by:

Cameron Young, NWS Tallahassee

State Meteorological Support Unit

Florida Division of Emergency Management

Users wishing to subscribe (approval pending) to this distribution list, register at:

[https://public.govdelivery.com/accounts/FLDEM/subscriber/new?topic\\_id=SERT\\_Met\\_Tropics](https://public.govdelivery.com/accounts/FLDEM/subscriber/new?topic_id=SERT_Met_Tropics).

Other reports available for subscription are available at:

<https://public.govdelivery.com/accounts/FLDEM/subscriber/new?preferences=true>