



Tropical Update



6:30 PM EDT

Monday, September 26, 2022

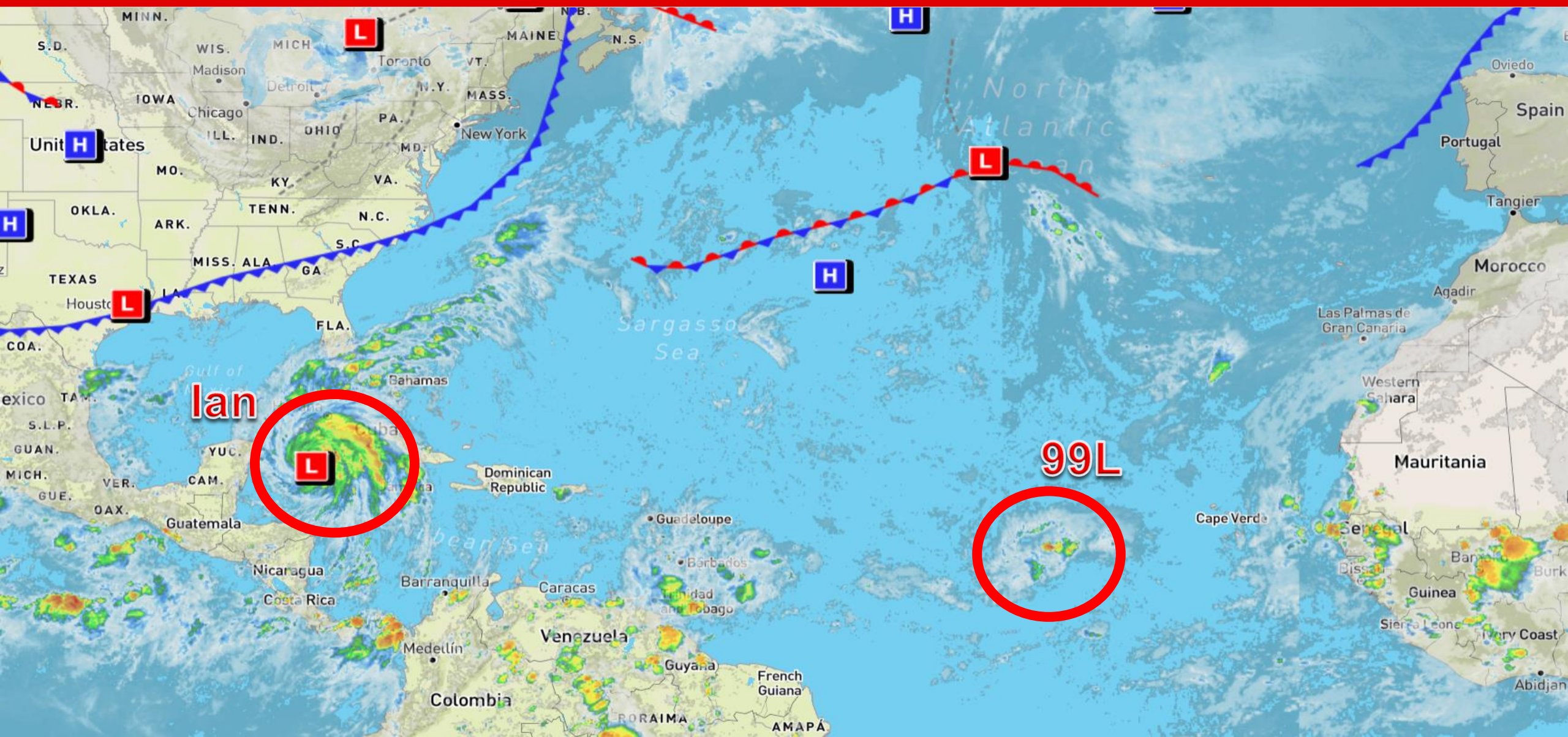
Hurricane Ian

This update is intended for government and emergency response officials, and is provided for informational and situational awareness purposes only. Forecast conditions are subject to change based on a variety of environmental factors. For additional information, or for any life safety concerns with an active weather event please contact your County Emergency Management or Public Safety Office, local National Weather Service forecast office, or visit the National Hurricane Center website at www.hurricanes.gov.



Atlantic Basin Satellite Image

Chance of development: — None — Low — Medium — High

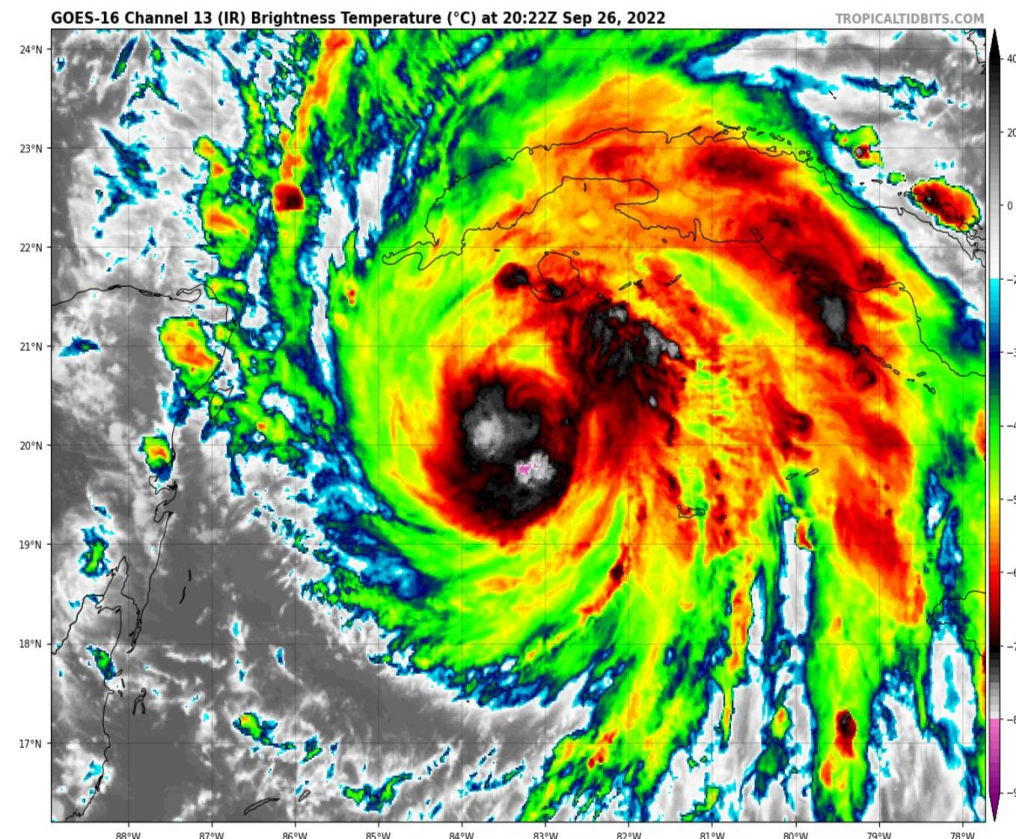




Hurricane Ian

5 PM ET Monday: Florida Threats & Changes Since Last Packet

	MINIMAL	Low	MODERATE	HIGH	EXTREME
WINDS					
STORM SURGE					
FLASH FLOODING					
TORNADOES					
	Low	MODERATE	HIGH		
RIP CURRENTS					



Overview/Recent Changes:

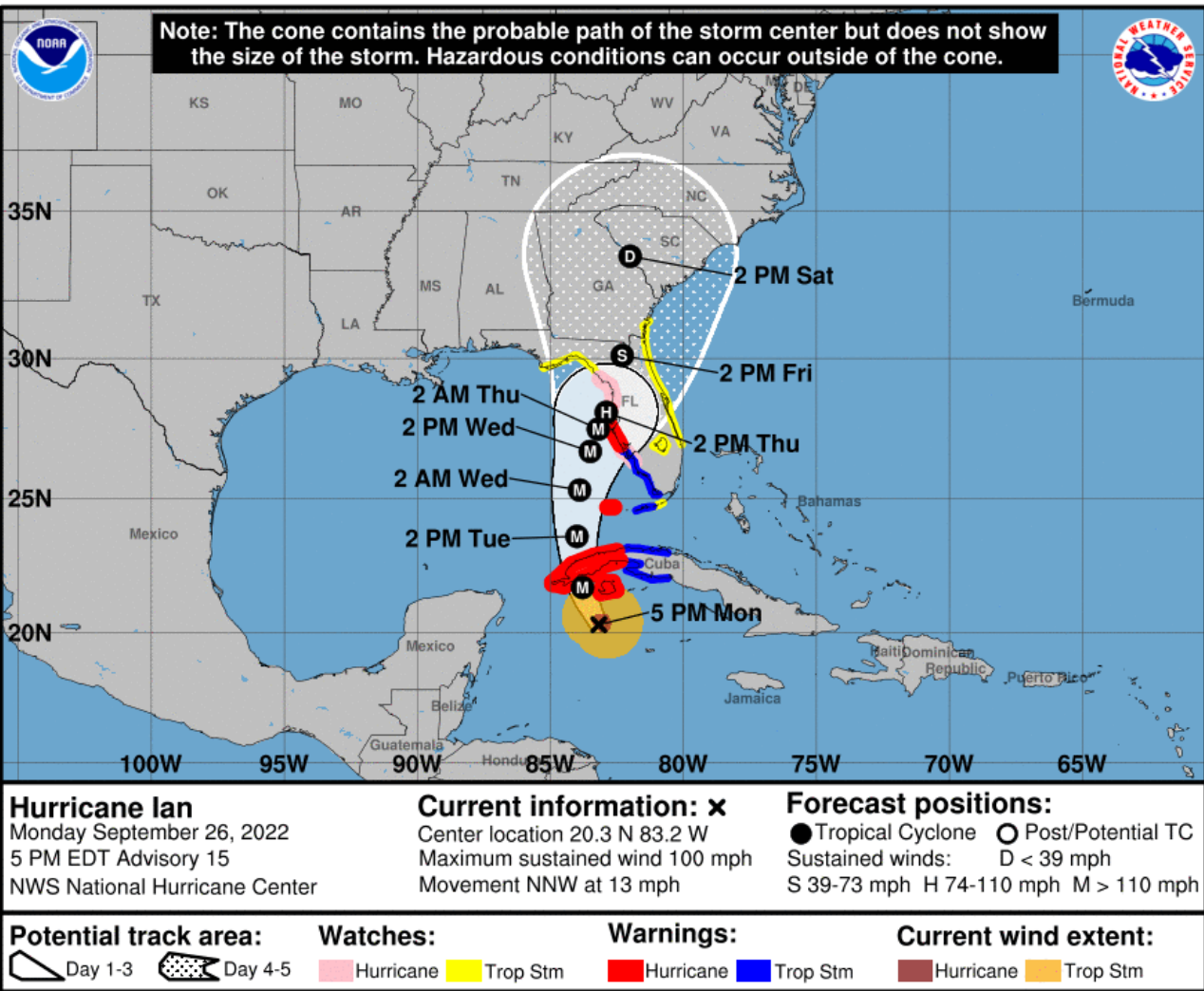
With the 5:00 PM EDT Advisory, Hurricane Ian has been upgraded to a Category 2 hurricane, with maximum sustained winds of 100 mph. Hurricane Warnings are now in effect around Tampa Bay with Hurricane Watches on either side on the Nature Coast and southwest Florida. Tropical Storm Watches are in effect for most of the eastern half of the state and in the coastal Big Bend. Storm Surge Warnings are in effect for much of the west coast with storm surge watches in the eastern Big Bend and far south Florida and the Keys.



Forecast Cone

Hurricane Ian ([LINK](#))

- **Location:** 155 miles southeast of the western tip of Cuba; 305 miles south-southeast of Key West, Florida
- **Maximum Sustained Winds:** 100 mph, Category 2
- **Current Movement:** NNW at 13 mph
- **FL Watches/Warnings:**
 - **Hurricane Warnings:** Around Tampa Bay
 - **Tropical Storm Warnings:** Lower Keys, SW FL, inland West Central FL
 - **Tropical Storm Watch:** Much of the eastern half of the Peninsula and the coastal Big Bend
 - **Hurricane Watch:** Along the Nature Coast and in parts of southwest Florida.



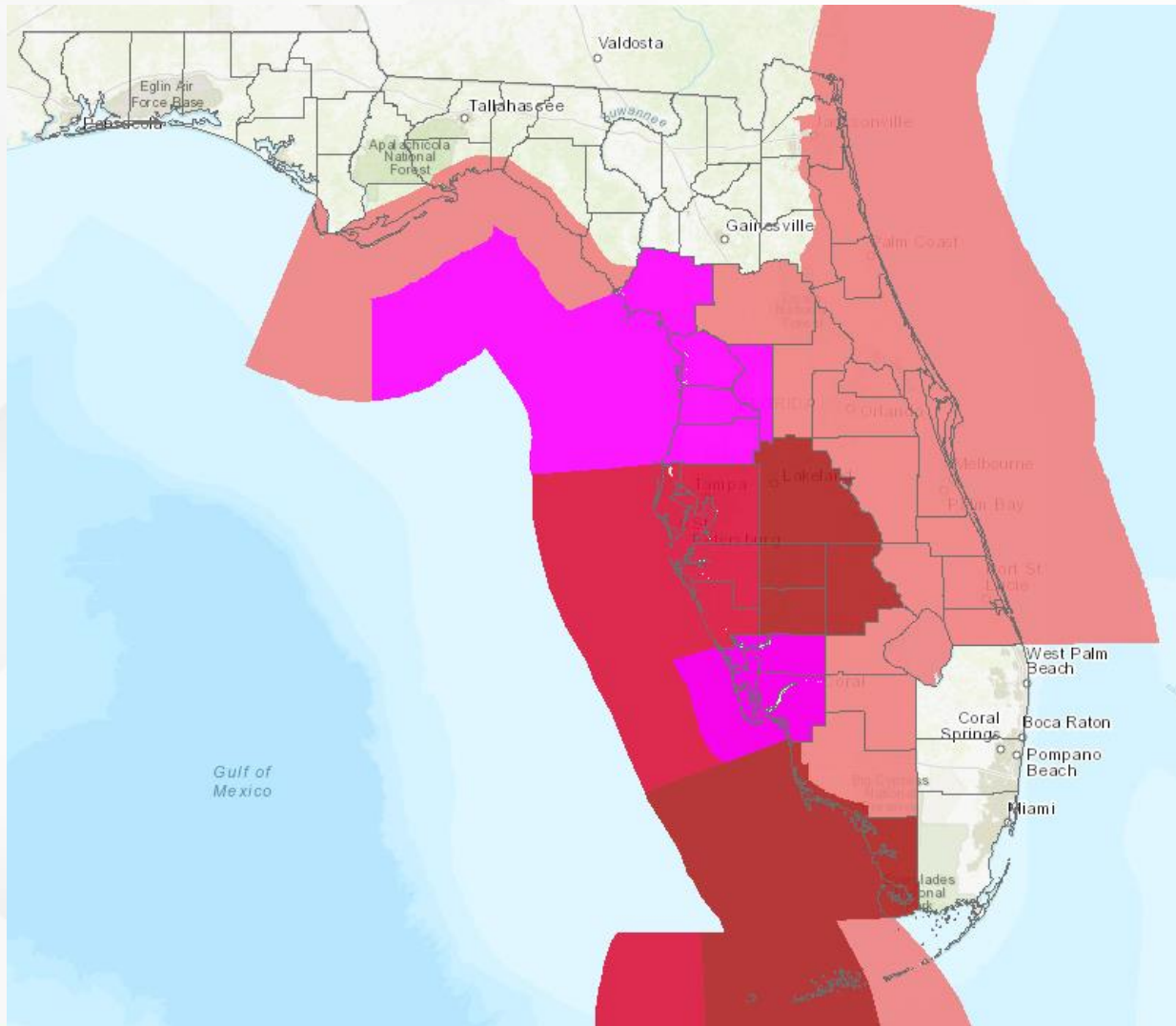
A turn toward the north is expected on Tuesday with a slightly slower forward speed. A turn toward the north-northeast with an even slower motion is forecast on Tuesday night or early Wednesday. On the forecast track, the center of Ian is expected to pass near or over western Cuba tonight and early Tuesday. Ian will then pass west of the Florida Keys late Tuesday, and approach the west coast of Florida on Wednesday.

Rapid strengthening is expected during the next day or so, and Ian is forecast to become a major hurricane tonight when it is near western Cuba.

Hurricane-force winds extend outward up to 35 miles from the center and tropical-storm-force winds extend outward up to 115 miles.



Active Tropical Watches/Warnings

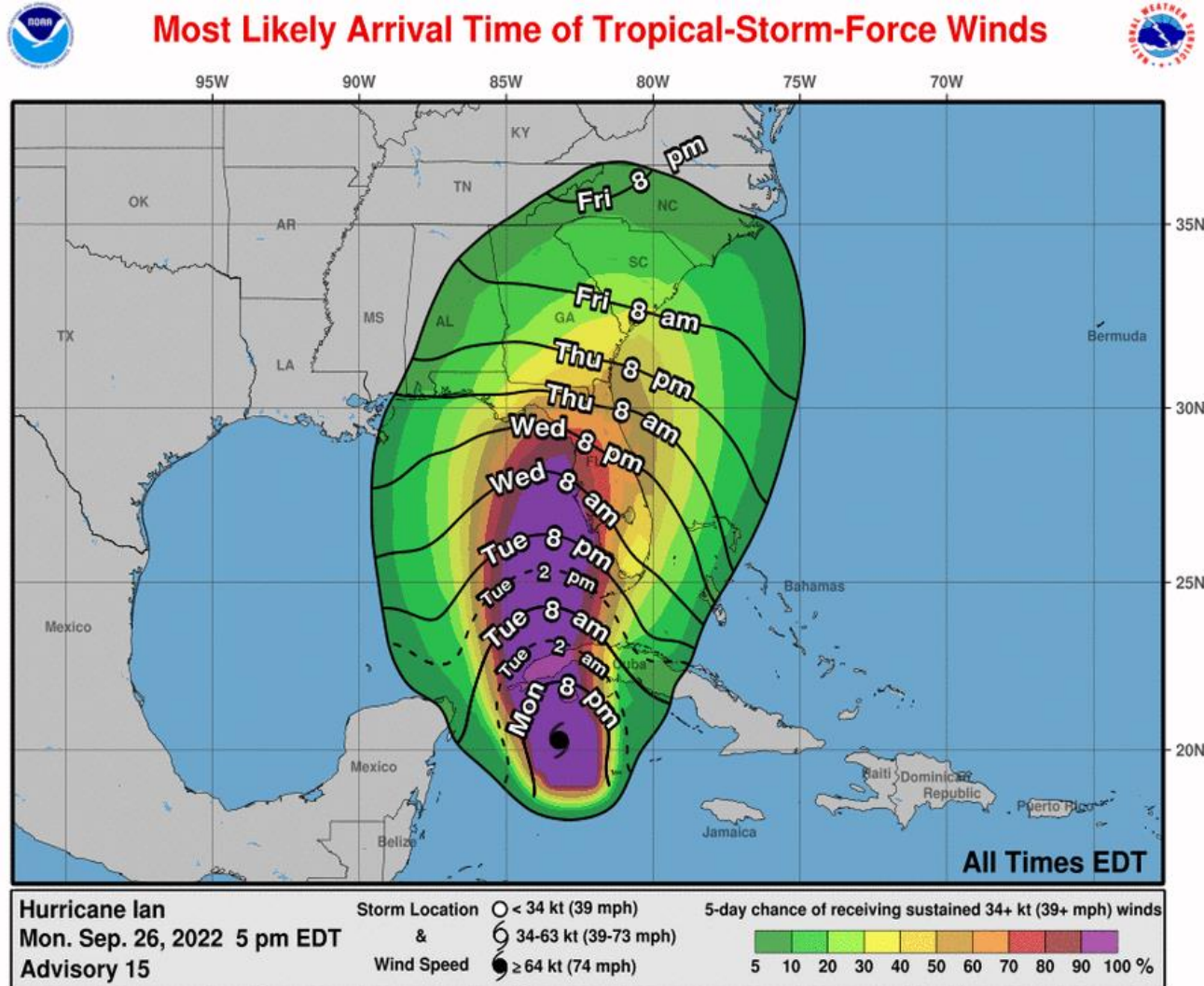


- **Hurricane Warning:**
 - Pinellas, Hillsborough, Manatee, Sarasota
- **Hurricane Watch:**
 - Charlotte, Lee, Pasco, Hernando, Sumter, Citrus, Levy
- **Tropical Storm Warning:**
 - Lower Keys, coastal Collier, Charlotte, Lee, Highlands, Desoto, Hardee, Polk
- **Tropical Storm Watch:**
 - Inland Collier, Hendry, Glades, Martin, St. Lucie, Indian River, Okeechobee, Brevard, Osceola, Orange, Seminole, Lake, Volusia, Marion, Flagler, eastern Putnam, St. Johns, eastern Clay, Duval, Nassau, coastal Dixie, coastal Taylor, coastal Jefferson, coastal Wakulla, coastal Franklin



Tropical Storm-Force Wind Probabilities

Hurricane Ian ([LINK](#))

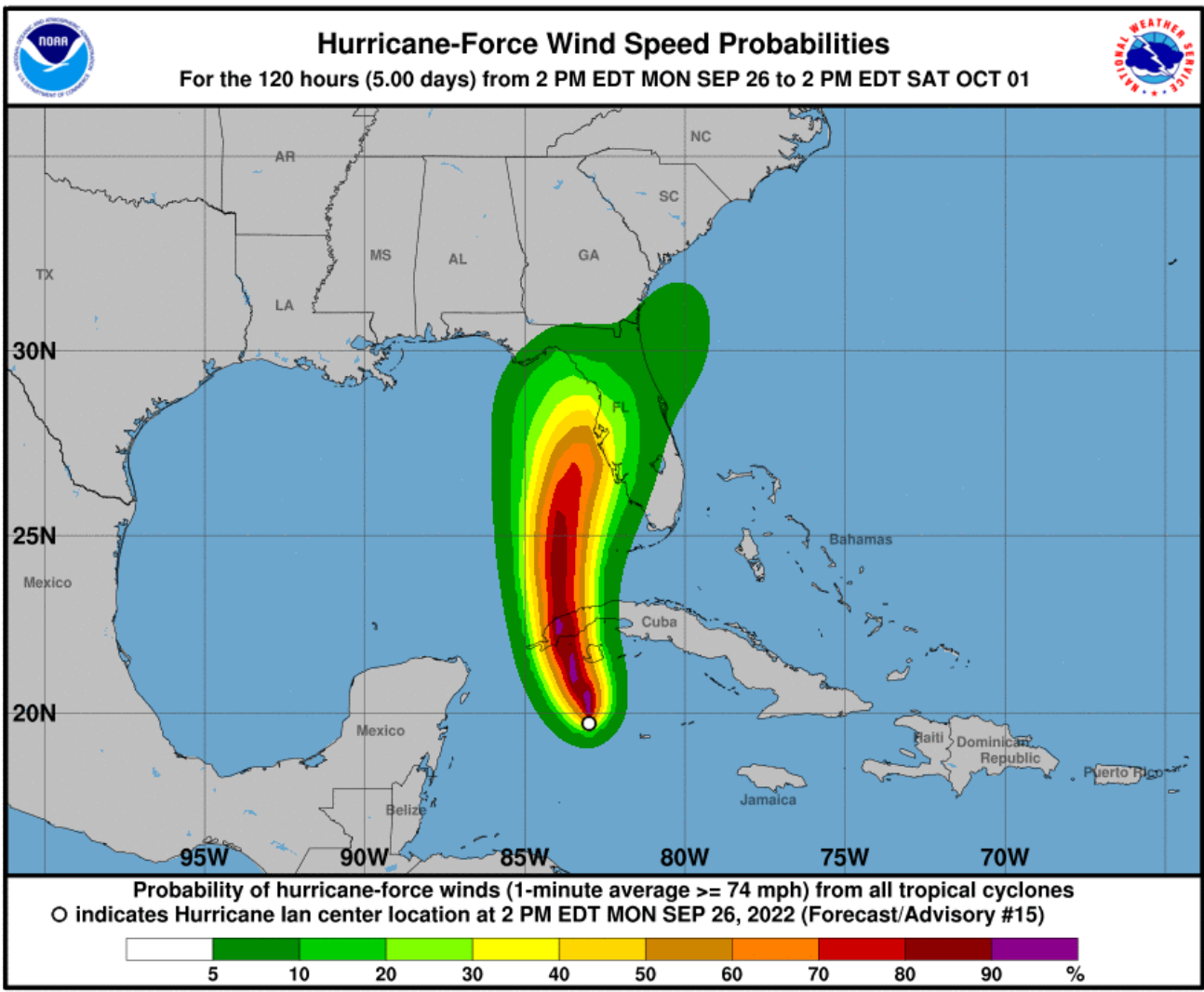


Tropical storm-force winds may begin as early as late Monday night into early Tuesday morning along the Florida Keys and southern Peninsula, but are more likely to arrive on Tuesday. Tropical storm-force winds may begin as early as Tuesday evening across portions of Central Florida and Wednesday morning across North Florida, but are more likely to begin Wednesday night into Thursday.



Hurricane-Force Wind Probabilities

Hurricane Ian ([LINK](#))



There is now a 15-40% chance of hurricane-force winds affecting the West Coast of Florida and coastal Big Bend.

City	Probability
Naples	16%
Tampa	36%
Cedar Key	24%
Tallahassee	4%
Apalachicola	6%
Orlando	7%



Key Messages

From the National Hurricane Center



Key Messages for Hurricane Ian

Advisory 15: 5:00 PM EDT Mon Sep 26, 2022

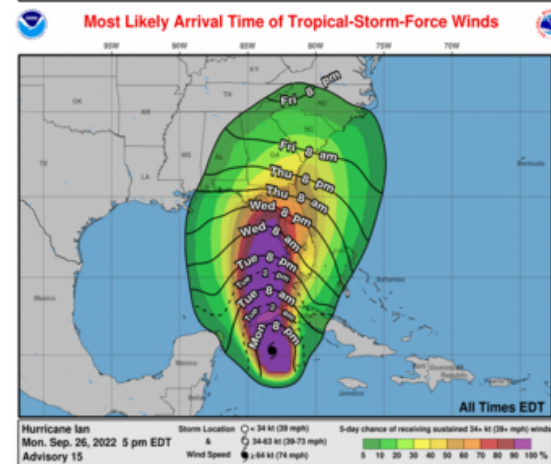
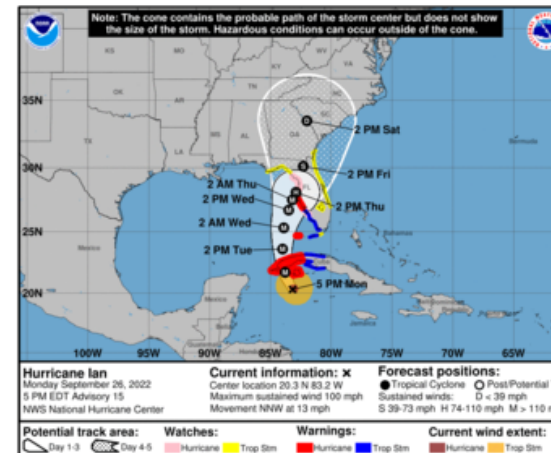


1. Life-threatening storm surge, hurricane-force winds, flash floods and possible mudslides are expected in portions of western Cuba beginning this evening and continuing into Tuesday. Devastating wind damage is possible where the core of Ian moves across western Cuba. Efforts to protect life and property should be rushed to completion.

2. There is the danger of life-threatening storm surge along much of the Florida west coast where a storm surge warning has been issued, with the highest risk from Fort Myers to the Tampa Bay region. Residents in these areas should listen to advice given by local officials.

3. Hurricane-force winds are expected in the hurricane warning area in west-central Florida beginning Wednesday morning with tropical storm conditions expected by late Tuesday.

4. Heavy rainfall will increase across the Florida Keys and south Florida Tuesday, spreading to central and northern Florida Wednesday and Thursday, potentially causing flash, urban and small stream flooding. Significant prolonged river flooding is likely across central Florida.

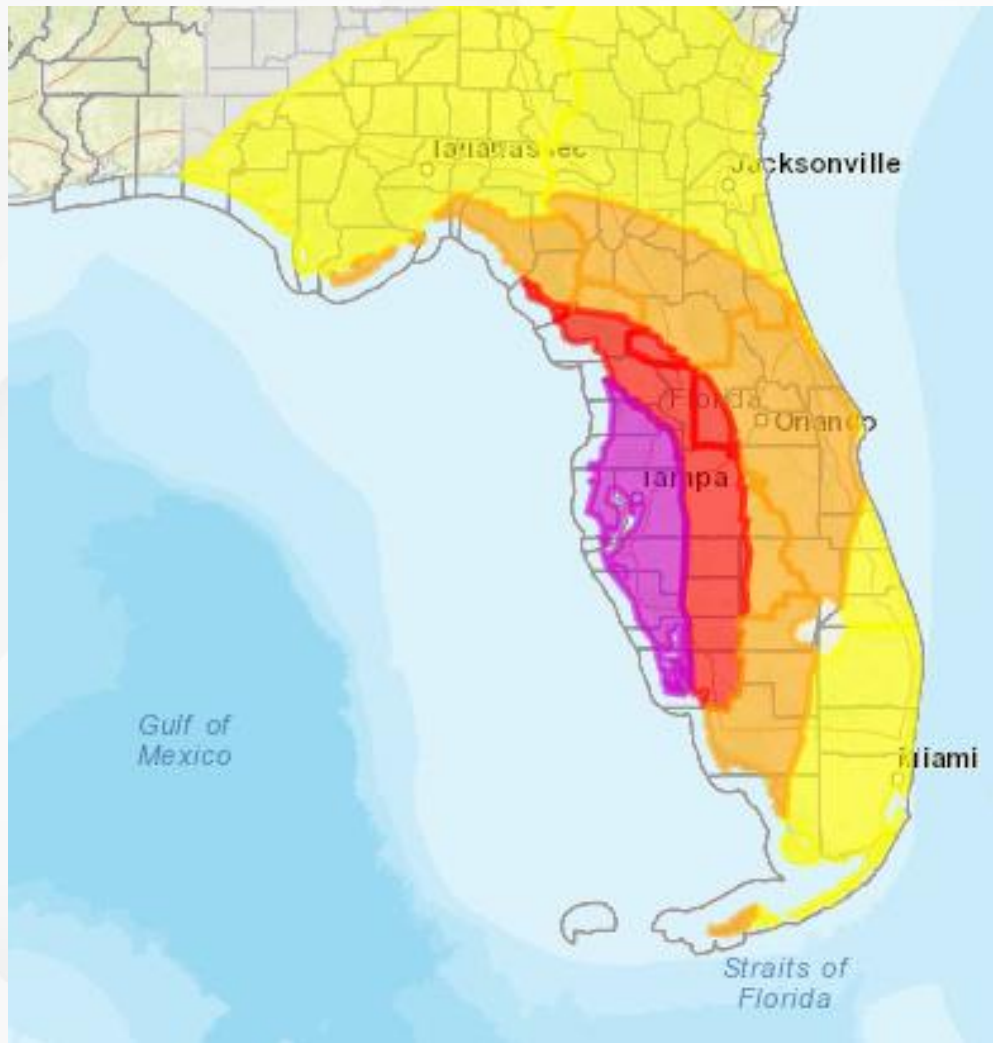


For more information go to hurricanes.gov



Damaging Wind Threat Overview

Hurricane Ian



The greatest wind threat is mainly along the West Florida coastline, where Ian makes its closest approach prior to landfall.

[https://www.weather.gov/srh/tropical?
office=mfl](https://www.weather.gov/srh/tropical?office=mfl)

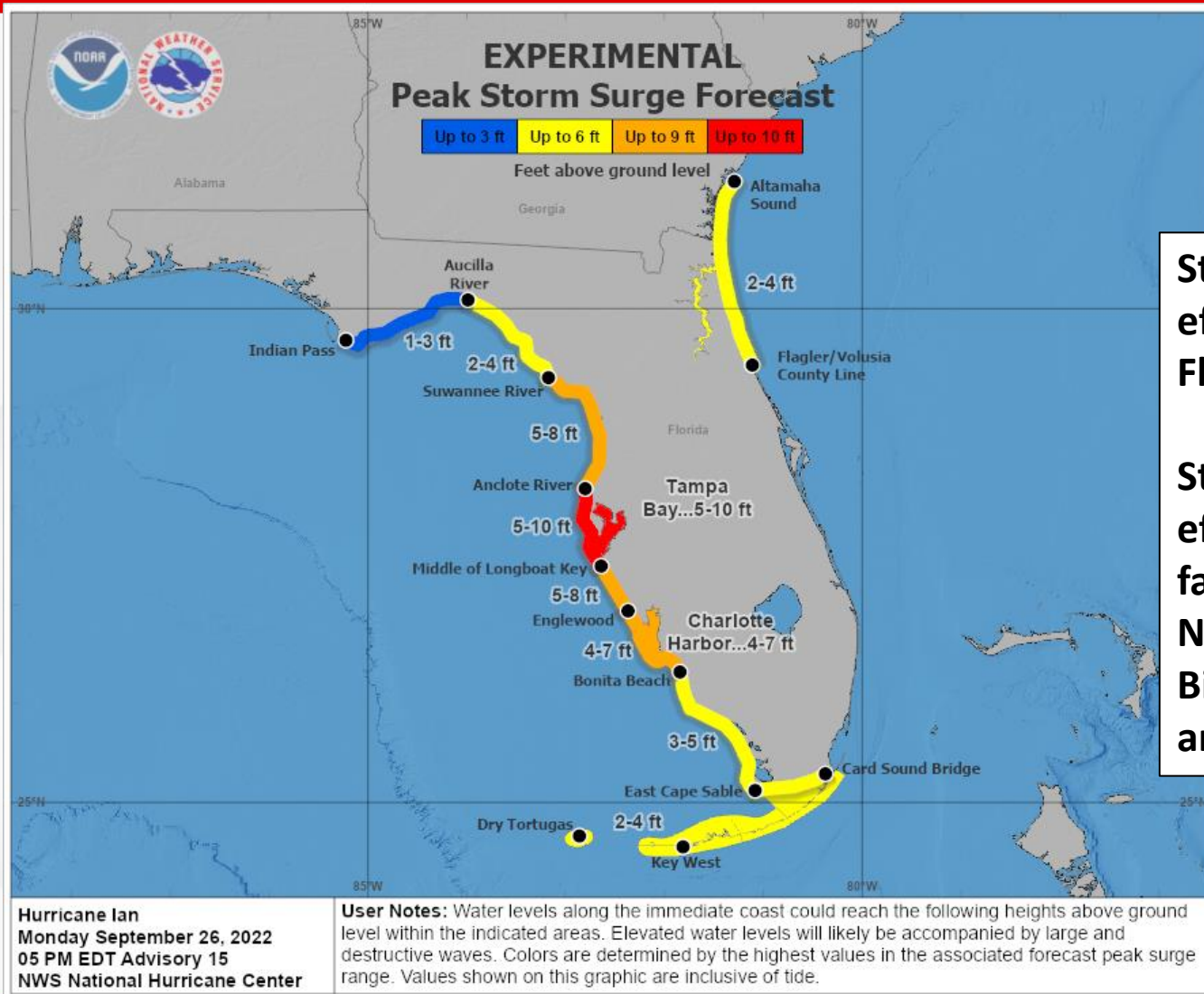
Click on “Threats and Impacts” Tab

Wind Threat
Potential for wind greater than 110 mph
Potential for wind 74 to 110 mph
Potential for wind 58 to 73 mph
Potential for wind 39 to 57 mph
Wind less than 39 mph



Surge Watches and Warnings

In Effect Until Further Notice



Storm Surge Warnings are in effect from Anclote River to Flamingo

Storm Surge Watches are in effect for the Florida Keys, far South Florida, the Nature Coast and eastern Big Bend, and the First Coast and St. Johns River



FOUO – For Government Official Use Only



Storm Surge **Warning**

There is a **danger of life-threatening inundation** from rising water moving inland from the shoreline generally **within 36 hours**.

Promptly follow evacuation and other instructions from local officials.

Storm Surge **Watch**

There is a **possibility of life-threatening inundation** from rising water moving inland from the shoreline generally **within 48 hours**.

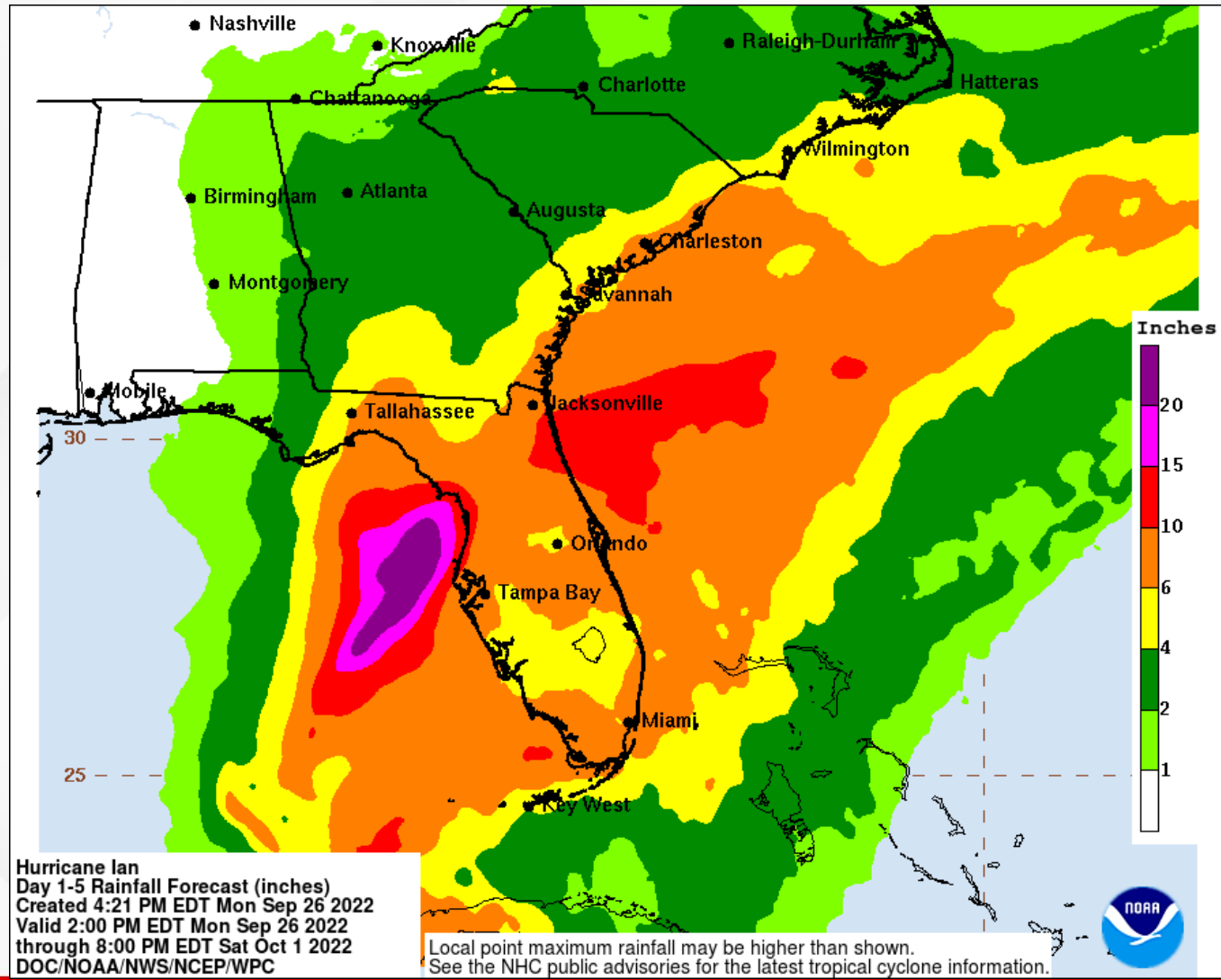
Promptly follow evacuation and other instructions from local officials.





5-Day Forecast Rainfall

From the Weather Prediction Center



While it is still too early to determine where the heaviest rainfall totals will occur, widespread rainfall totals of 5-10" are possible as Ian moves northward, even over much of the Florida Peninsula. Heavier rainfall totals up to 20" are possible near the center of the forecast track.

Hurricane Ian
Day 1-5 Rainfall Forecast (inches)
Created 4:21 PM EDT Mon Sep 26 2022
Valid 2:00 PM EDT Mon Sep 26 2022
through 8:00 PM EDT Sat Oct 1 2022
DOC/NOAA/NWS/NCEP/WPC

Local point maximum rainfall may be higher than shown.
See the NHC public advisories for the latest tropical cyclone information.

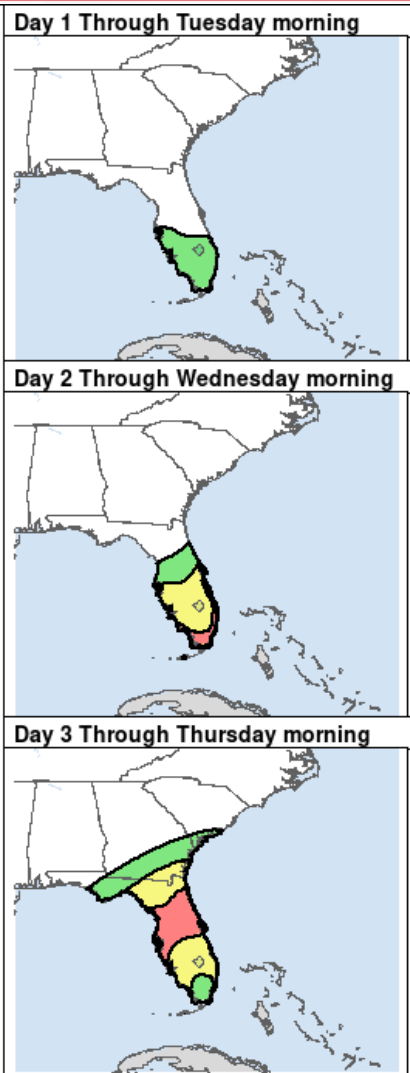
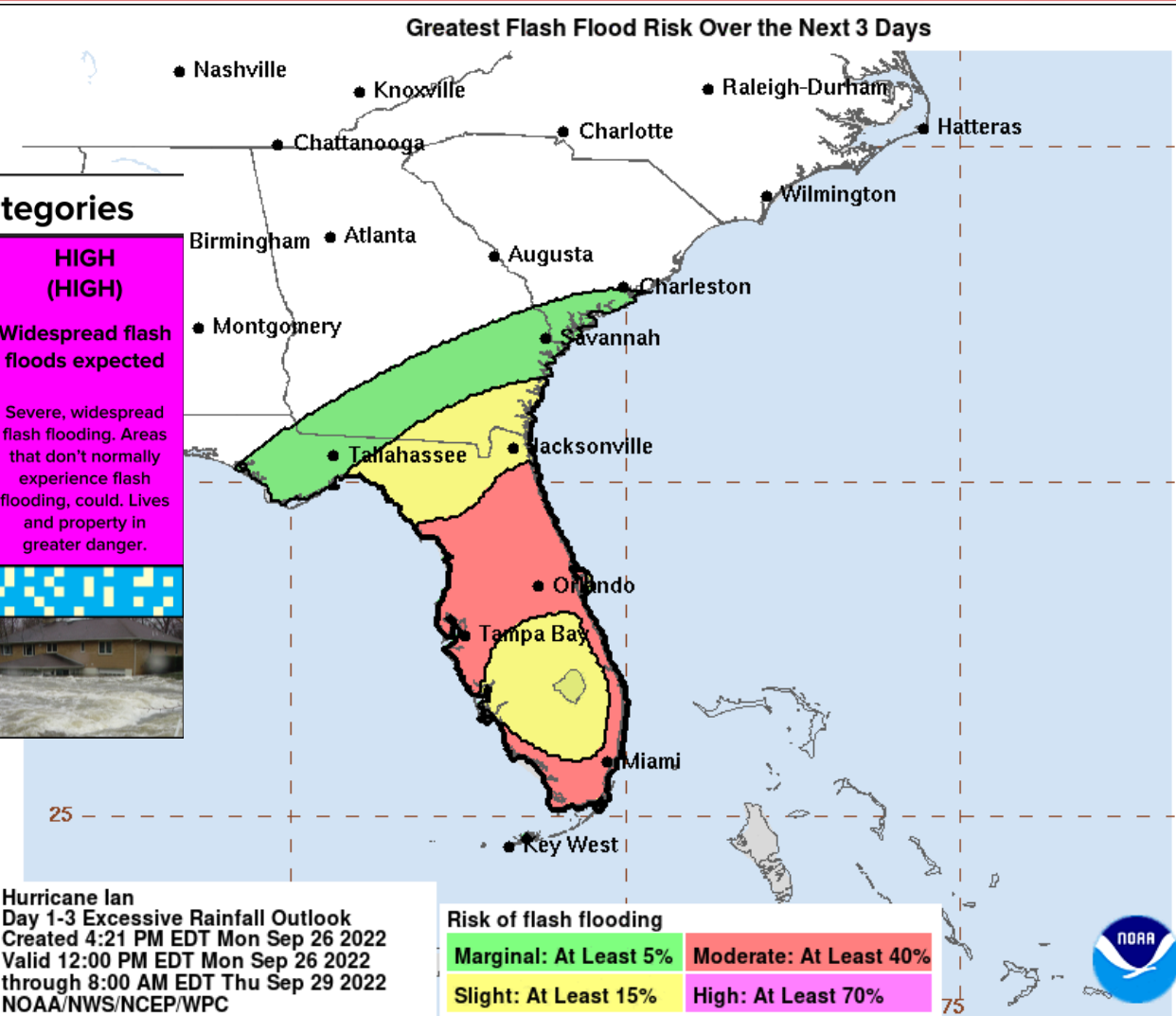


Flash Flood Outlooks

From the Weather Prediction Center

Understanding WPC Excessive Rainfall Risk Categories

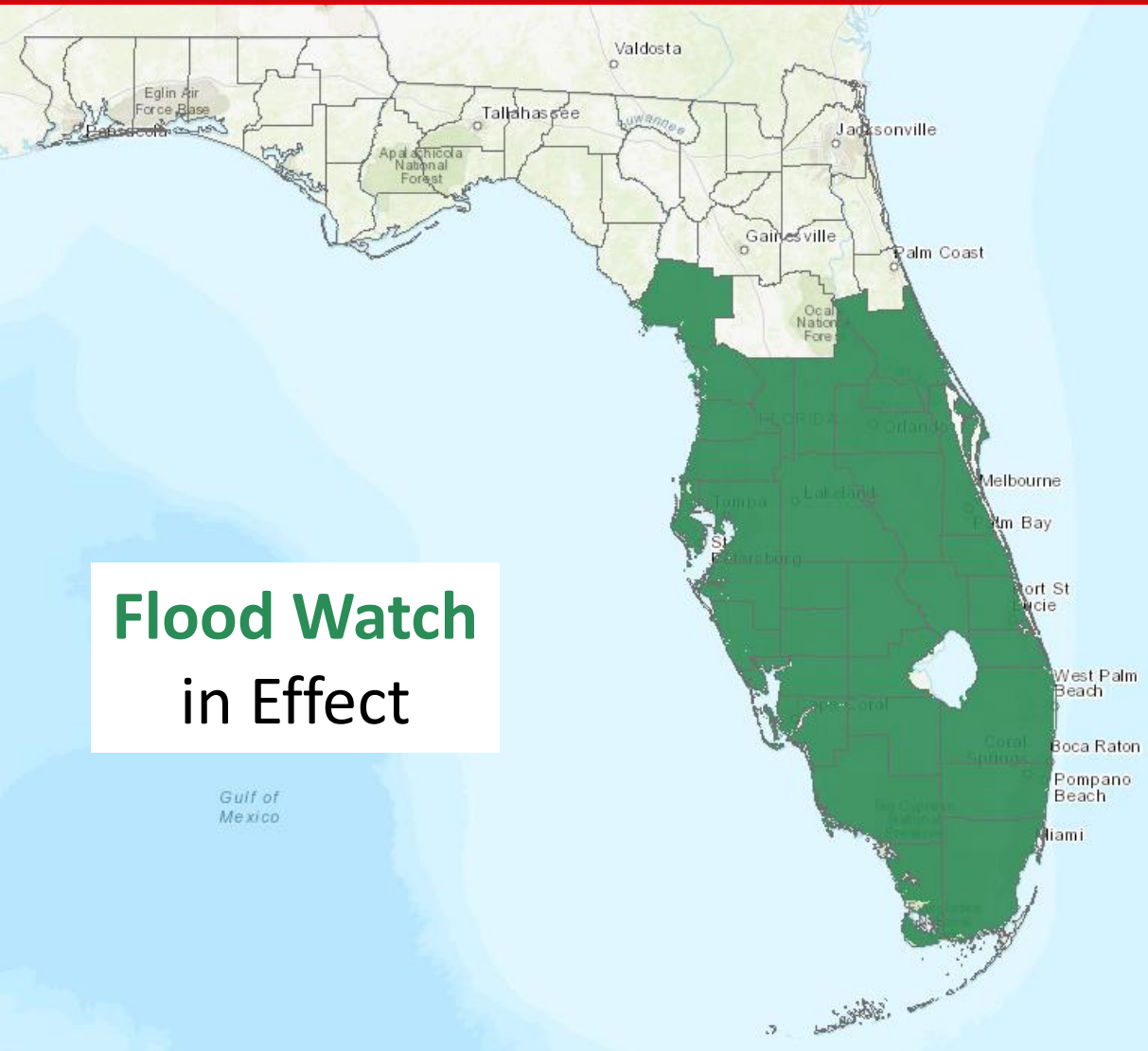
No Area/Label	MARGINAL (MRGL)	SLIGHT (SLGT)	MODERATE (MDT)	HIGH (HIGH)
Flash floods are generally not expected.	Isolated flash floods possible	Scattered flash floods possible	Numerous flash floods likely	Widespread flash floods expected
	Localized and primarily affecting places that can experience rapid runoff with heavy rainfall.	Mainly localized. Most vulnerable are urban areas, roads, small streams and washes. Isolated significant flash floods possible.	Numerous flash flooding events with significant events possible. Many streams may flood, potentially affecting larger rivers.	Severe, widespread flash flooding. Areas that don't normally experience flash flooding, could. Lives and property in greater danger.
@NWSWPC				
Flash flooding near me?	Flash Flooding	Flash Flooding	Flash Flooding	Flash Flooding
	NO Flash Flooding	Flash Flooding	Flash Flooding	Flash Flooding
WEATHER PREDICTION CENTER				





Flood Watches in Effect

From the National Weather Service



Flood Watch
in Effect

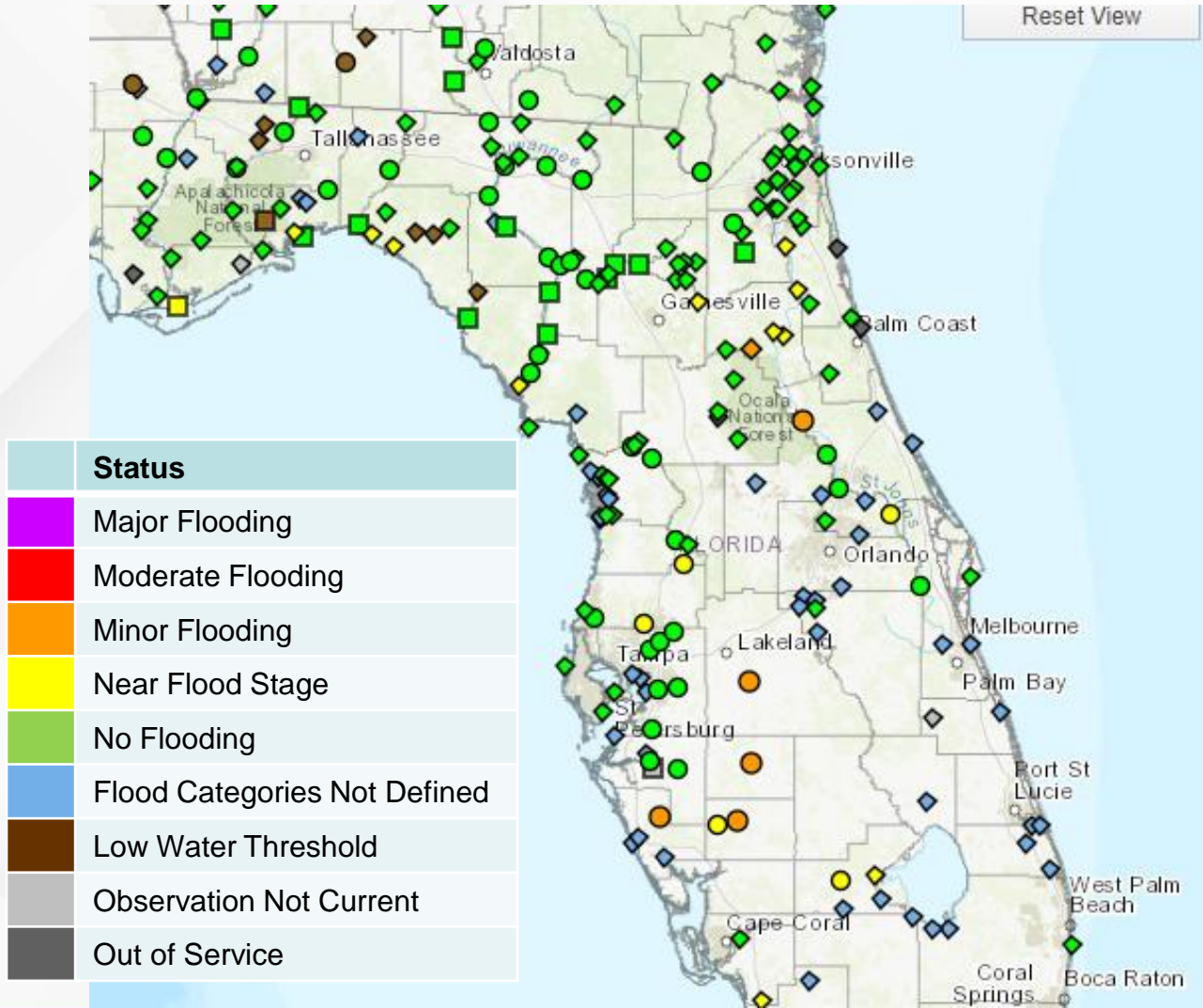
Flood Watches are in effect for the entire Florida Peninsula.

FOUO – For Government Official Use Only



Current River Observations

As of Monday Evening

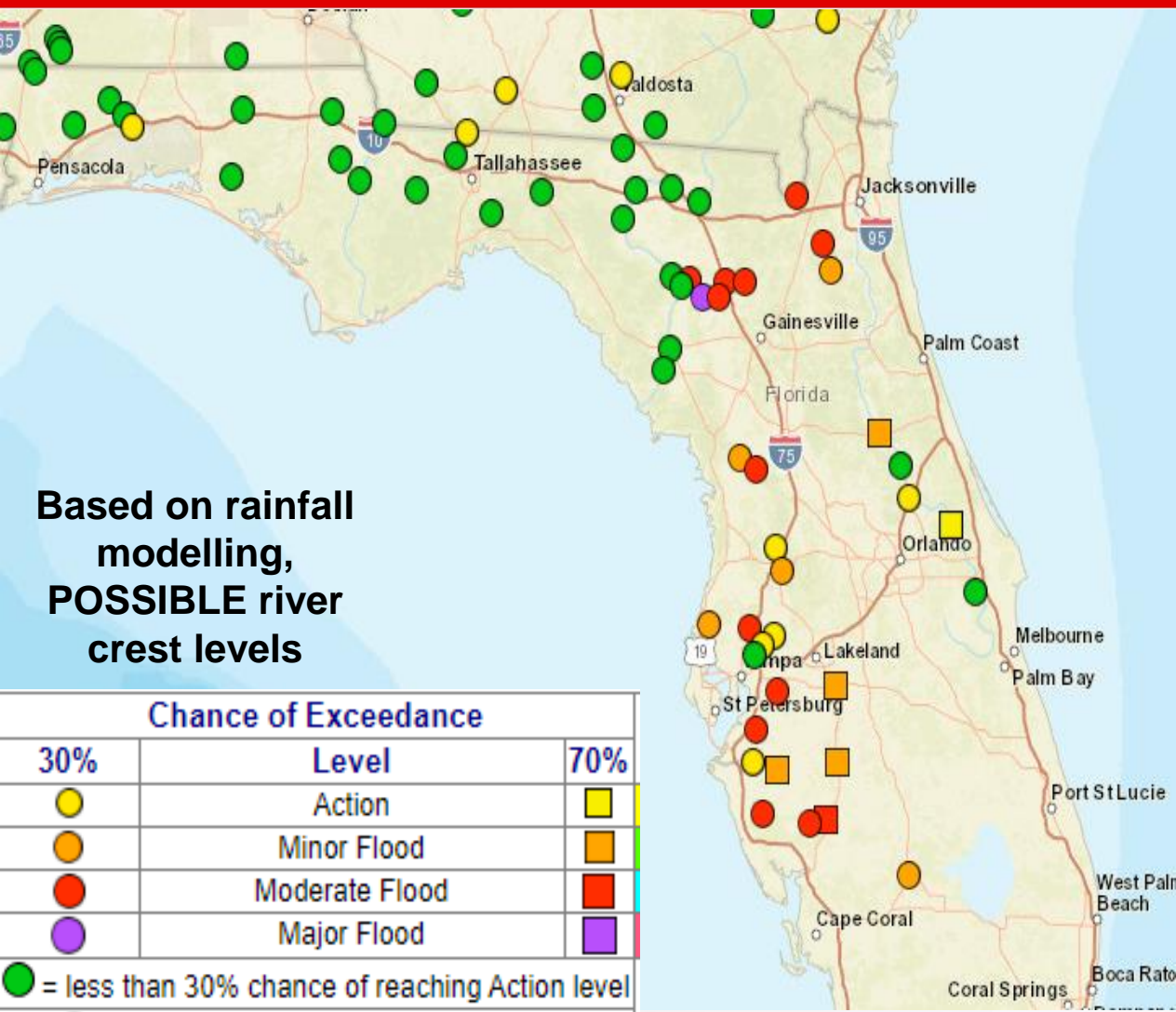


Minor riverine flooding continues on the Peace River, as well as Horse Creek and Myakka River in West Central Florida. Minor flooding is also still occurring on the St. Johns River at Astor as well as the Ocklawaha River in Northeast Florida. While these rivers are receding, the combination of additional heavy rainfall and wet antecedent conditions would leave these areas more susceptible for flooding.

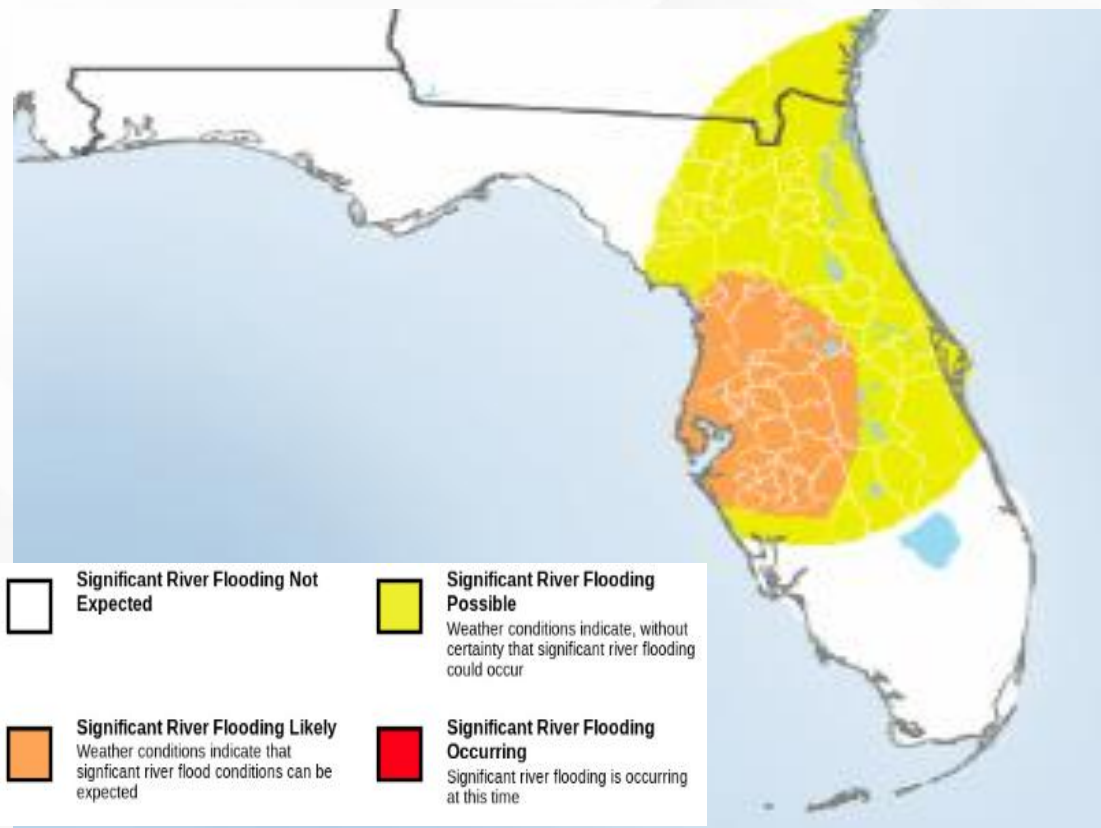


Possible River Flooding

Chance of River Flooding Based on Range of Forecast Rainfall



There is the potential for significant river flooding, particularly in the central and northern Florida Peninsula basins where some rivers are already near bank full or above flood stage.

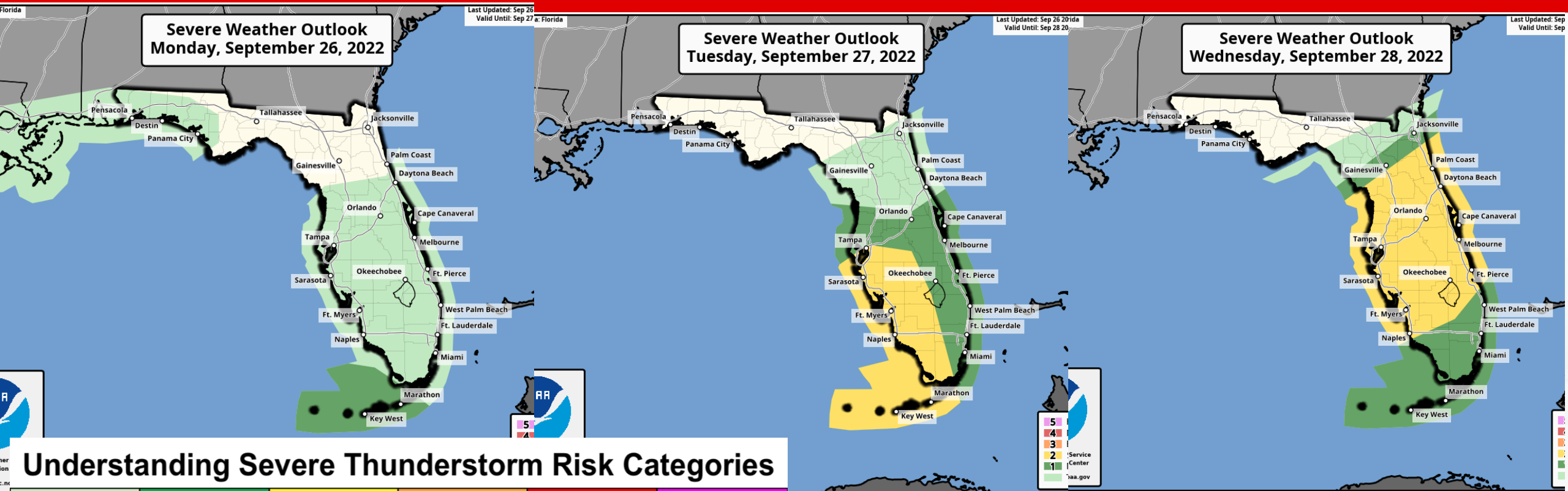


FOUO – For Government Official Use Only



Severe Weather Outlook

From the Storm Prediction Center



Understanding Severe Thunderstorm Risk Categories

THUNDERSTORMS (no label)	1 - MARGINAL (MRGL)	2 - SLIGHT (SLGT)	3 - ENHANCED (ENH)	4 - MODERATE (MDT)	5 - HIGH (HIGH)
No severe* thunderstorms expected	Isolated severe thunderstorms possible	Scattered severe storms possible	Numerous severe storms possible	Widespread severe storms likely	Widespread severe storms expected
Lightning/flooding threats exist with <u>all</u> thunderstorms	Limited in duration and/or coverage and/or intensity	Short-lived and/or not widespread, isolated intense storms possible	More persistent and/or widespread, a few intense	Long-lived, widespread and intense	Long-lived, very widespread and particularly intense

Outer rain bands from Ian could result in isolated tornadoes across the Keys tonight, with an increased risk across the Keys and Southwest Florida Tuesday. The risk will move northward into Central and North Florida on Wednesday and Thursday.



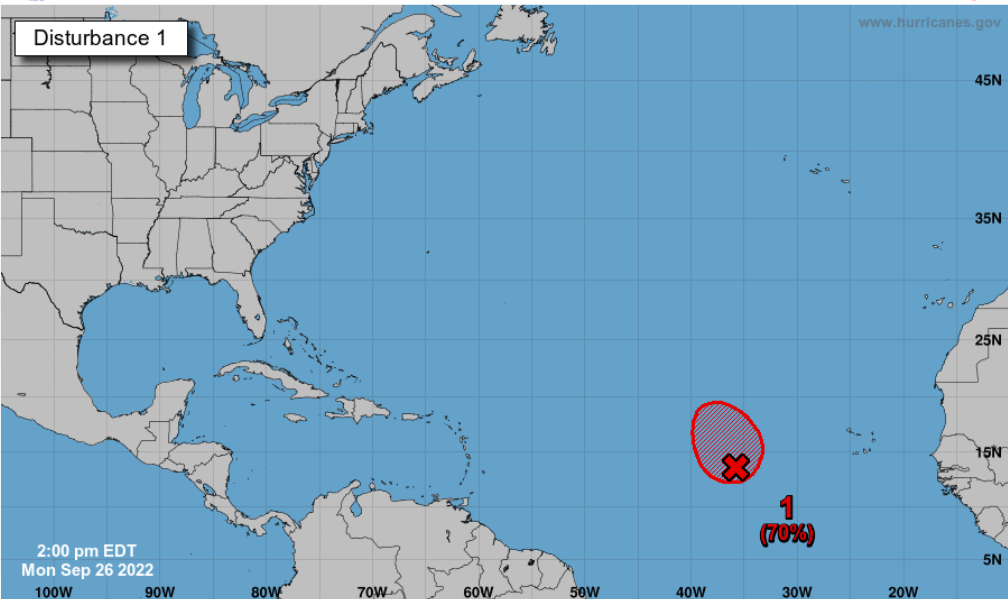
Tropical Weather Outlook

Disturbance 1 – Invest 99L ([LINK](#))



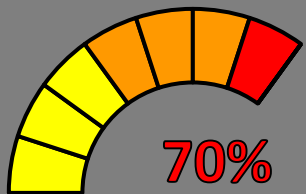
Five-Day Graphical Tropical Weather Outlook

National Hurricane Center Miami, Florida

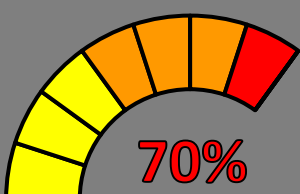


Current Disturbances and Five-Day Cyclone Formation Chance:
 Tropical or Sub-Tropical Cyclone: ○ Depression ○ Storm ○ Hurricane
 ○ Post-Tropical Cyclone or Remnants

Formation Chance: ✕ < 40% ✕ 40-60% ✕ > 60%



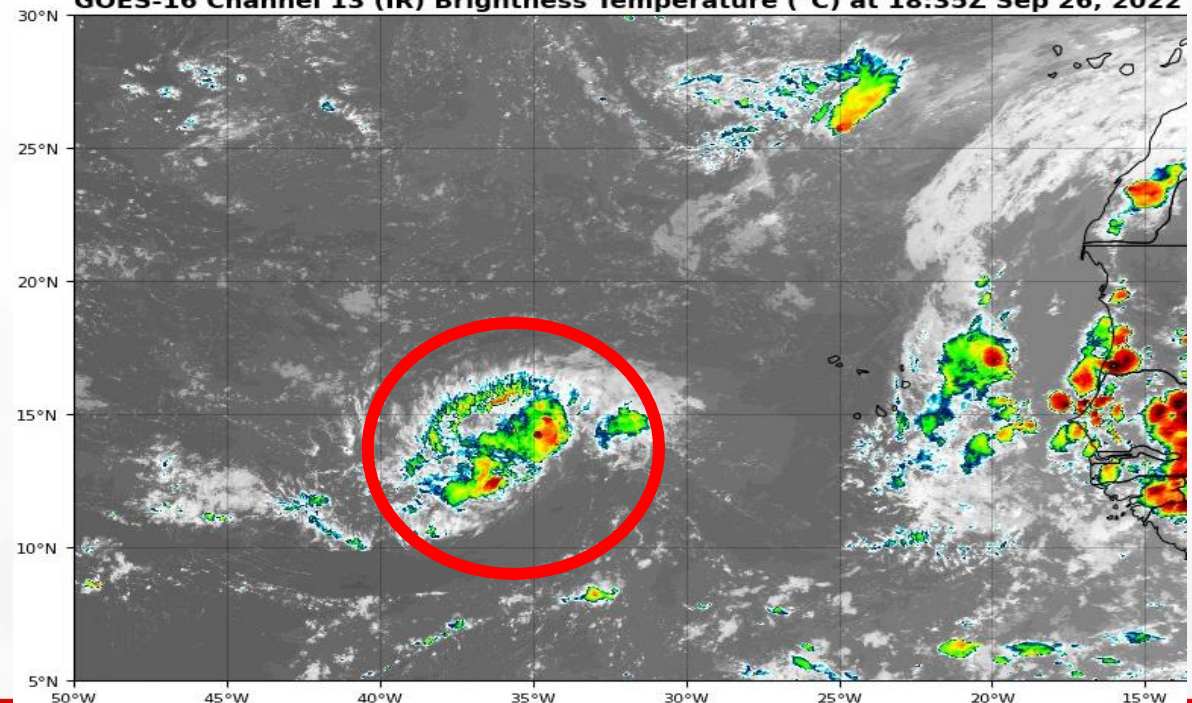
48 Hour Formation



5 Day Formation

An area of low pressure is located several hundred miles west of the Cabo Verde Islands. Despite the proximity of nearby dry air, upper-level winds appear generally conducive for additional development, and a tropical depression is likely to form during the next couple of days as the system meanders over the central tropical Atlantic. By the end of this week, upper-level winds are forecast to become less favorable for development as the system begins to move slowly north-northwestward. *Invest 99L poses no threat to Florida.*

GOES-16 Channel 13 (IR) Brightness Temperature (°C) at 18:35Z Sep 26, 2022



FOUO – For Government Official Use Only



Summary

Hurricane Ian:

- As of 5:00 PM EDT Monday, Ian was located about 155 miles SE of the western tip of Cuba, or about 305 miles SSE of Key West, Florida, and moving NNW around 13 mph.
- A turn toward the north with a slower motion is expected on Tuesday with a turn toward north-northeast and an even slower motion on Wednesday.
- Ian will pass west of the Florida Keys Tuesday night, then very near the West Coast on Wednesday into Thursday.
- Maximum sustained winds have increased to 100 mph, making Ian a Category 2 hurricane. Tropical-storm-force winds extend outward up to 115 miles from the center, and hurricane force winds extend outward up to 35 miles from the center.
- Ian is expected to become a major hurricane tonight or early Tuesday as it undergoes rapid strengthening. It will likely remain a Category 3 or 4 over the southeast Gulf on Wednesday.
- Ian could make landfall along the Florida Gulf Coast on Friday, however, impacts could start in southern Florida on Tuesday and spread northward through the remainder of the week. Therefore, it is important to not focus on the exact forecast track of Ian.

Florida Outlook:

- A **Hurricane Warning** has been issued from Englewood to the Anclote River, including Tampa Bay, and the Dry Tortugas
- A **Hurricane Watch** is in effect from north of the Anclote River to the Suwannee River and from Bonita Beach to Englewood.
- A **Tropical Storm Watch** is in effect for the Middle FL Keys, Lake Okeechobee, from the Suwannee River to Indian Pass, and along the East Coast from Jupiter Inlet northward.
- A **Storm Surge Warning** is in effect from Anclote River to Flamingo, including Tampa Bay.
- A **Storm Surge Watch** is in effect for the FL Keys, from the Aucilla River to the Anclote River, from the Flagler/Volusia Line northward, and for the St. Johns River.
- Storm surge values of 5-10 feet are expected from Anclote River to Longboat Key (and Tampa Bay); 5-8 feet from the Suwannee River to Anclote River and from Longboat Key to Englewood; 4-7 feet from Englewood to Bonita Beach (and Charlotte Harbor); 3-5 feet from Bonita Beach to East Cape Sable; 2-4 feet from the Flagler/Volusia line northward (including the St. Johns River), East Cape Sable to Card Sound Bridge, the Florida Keys, and from the Aucilla River to the Suwannee River
- Tropical storm-force winds may arrive on Tuesday across South Florida. Tropical storm-force winds may then spread from south to north along portions of the Peninsula through Wednesday and could arrive in the eastern Panhandle/Big Bend on Wednesday.
- 4 to 12 inches of rain is possible across the Florida Peninsula with the highest totals near the west coast of Florida, where localized totals of 15 to 20 inches are possible. Heavy rainfall is also possible in the Florida Big Bend and Northeast Florida, but these totals will depend on the ultimate track of Ian.
- Isolated tornadoes may begin as early as late tonight along the Florida Keys, expanding from south to north across the Peninsula mid-next week.
- Rip currents will increase along the Florida Gulf Coast as swells from Ian move through the Gulf of Mexico.

The next briefing packet will be issued Tuesday Morning. For the latest information, please visit the [National Hurricane Center website](#).



Tropical Update

FOUO – For Government Official Use Only



Created by:

Caitlyn Gillespie, Deputy State Meteorologist

Caitlyn.Gillespie@em.myflorida.com

State Meteorological Support Unit

Florida Division of Emergency Management

Users wishing to subscribe (approval pending) to this distribution list, register at:

https://public.govdelivery.com/accounts/FLDEM/subscriber/new?topic_id=SERT_Met_Tropics.

Other reports available for subscription are available at:

<https://public.govdelivery.com/accounts/FLDEM/subscriber/new?preferences=true>