



TROPICAL UPDATE



11:30 AM EDT

Wednesday, September 14, 2022

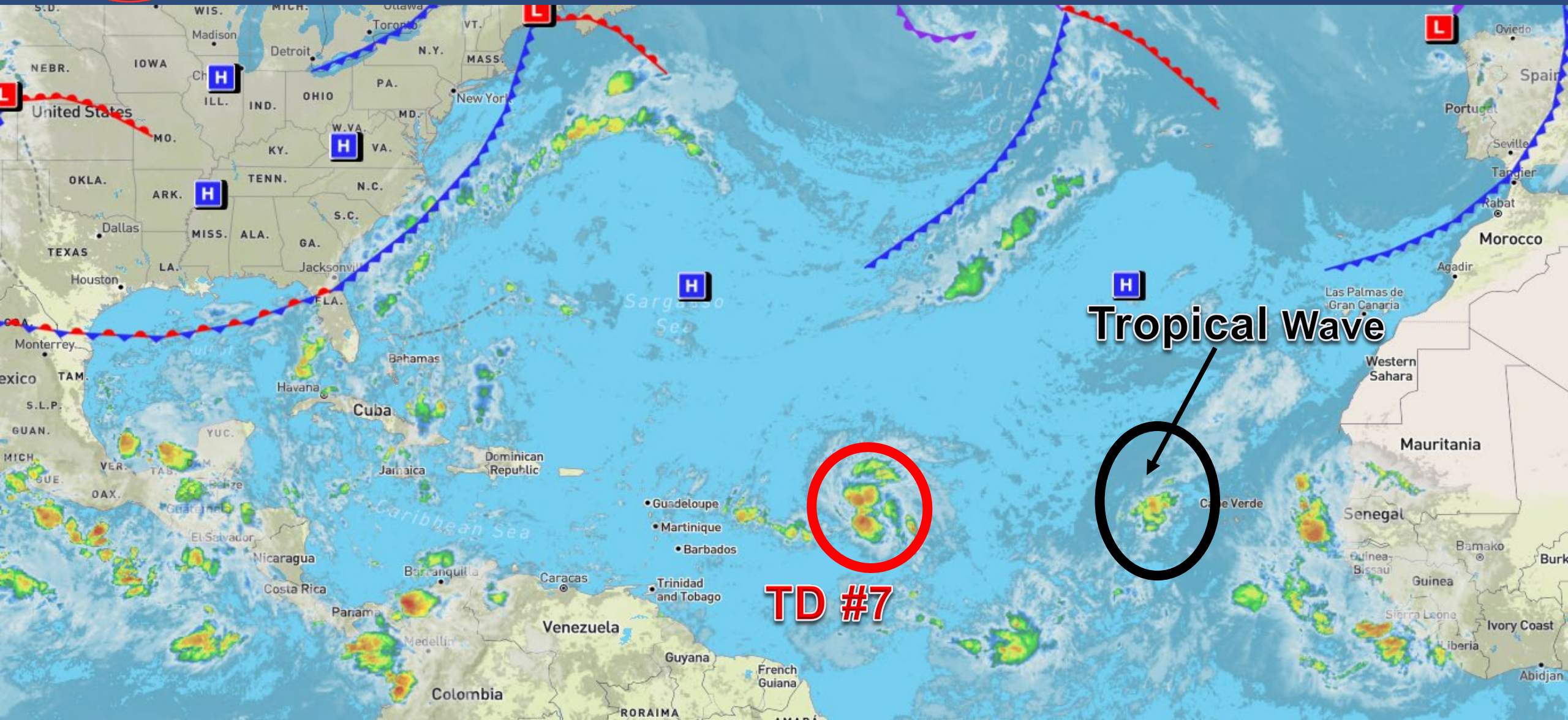
Tropical Depression Seven

This update is intended for government and emergency response officials, and is provided for informational and situational awareness purposes only. Forecast conditions are subject to change based on a variety of environmental factors. For additional information, or for any life safety concerns with an active weather event please contact your County Emergency Management or Public Safety Office, local National Weather Service forecast office, or visit the National Hurricane Center website at www.hurricanes.gov.



Atlantic Basin Satellite Image

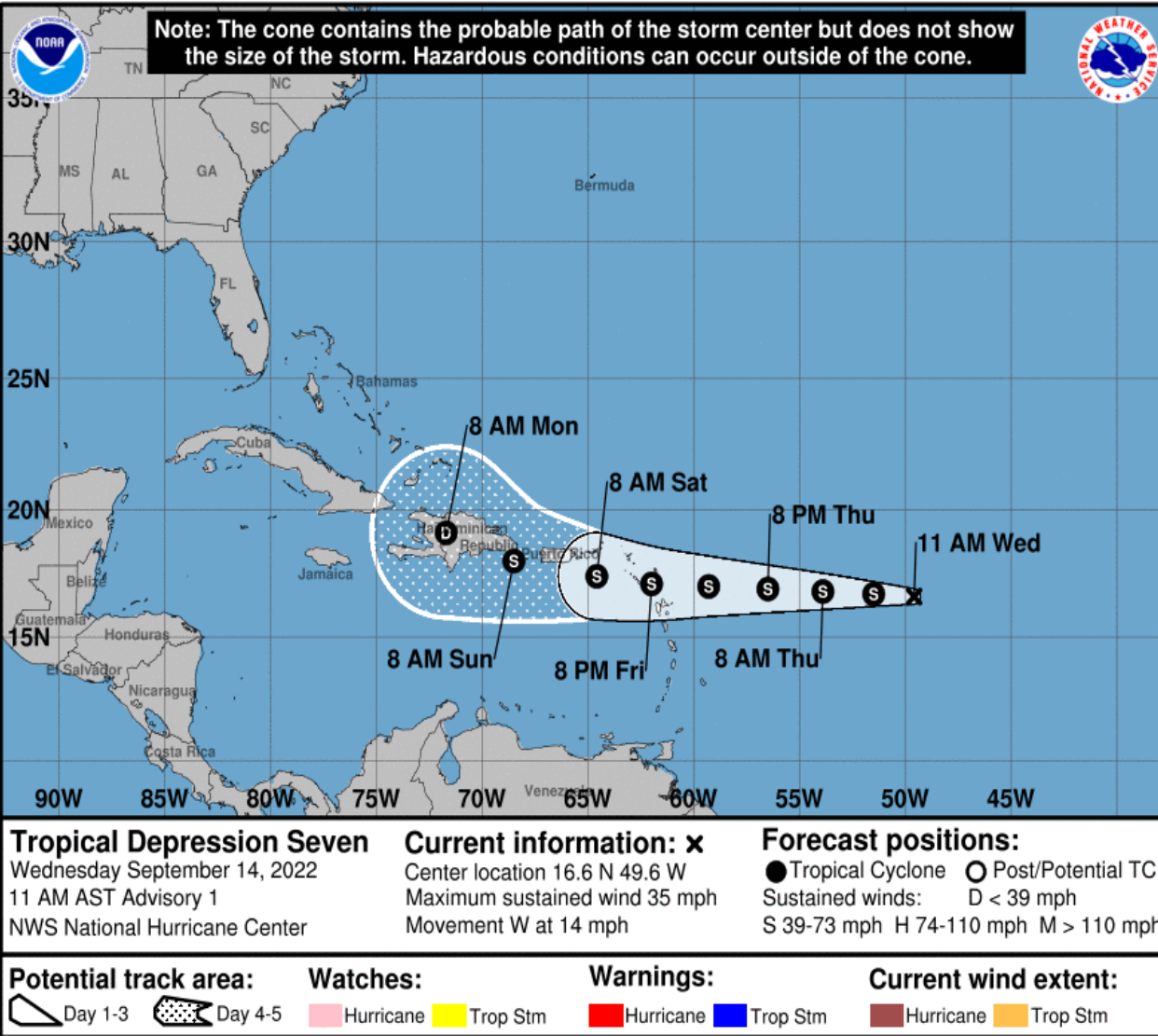
Chance of development: — None — Low — Medium — High





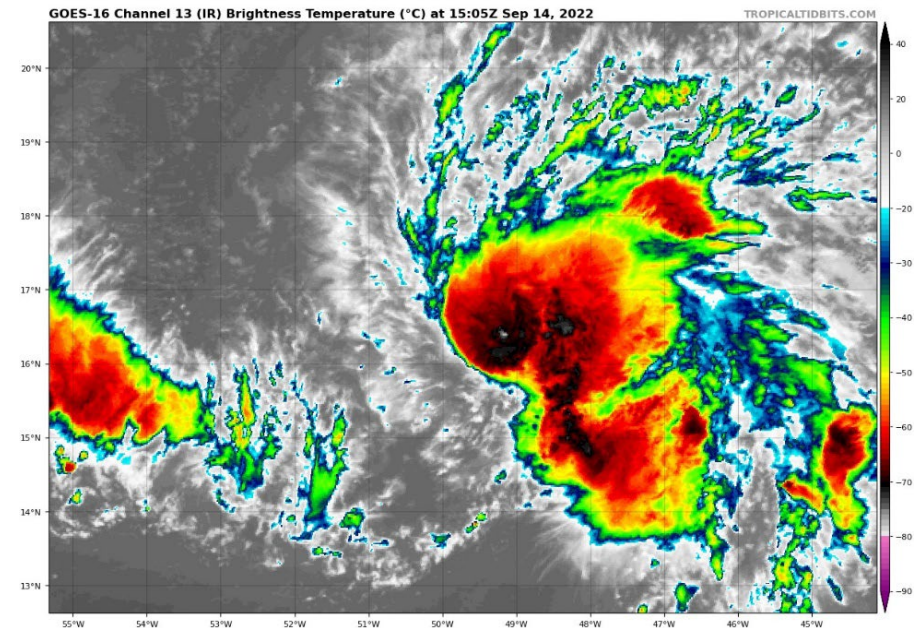
Forecast Cone

Tropical Depression Seven ([LINK](#))



- **Location:** 805 miles east of the Leeward Islands
- **Maximum Sustained Winds:** 35 mph
- **Current Movement:** W at 14 mph

A general westward motion is expected to continue during the next few days. On the forecast track, the center of TD #7 is forecast to move through the Leeward Islands on Friday or Friday night, and be near the Virgin Islands and Puerto Rico this weekend. Maximum sustained winds are near 35 mph, with higher gusts. Some gradual strengthening is forecast during the next day or so, and the depression is forecast to become a tropical storm tonight or Thursday. *This system poses no threat to Florida over the next 7 days, but will be monitored.*



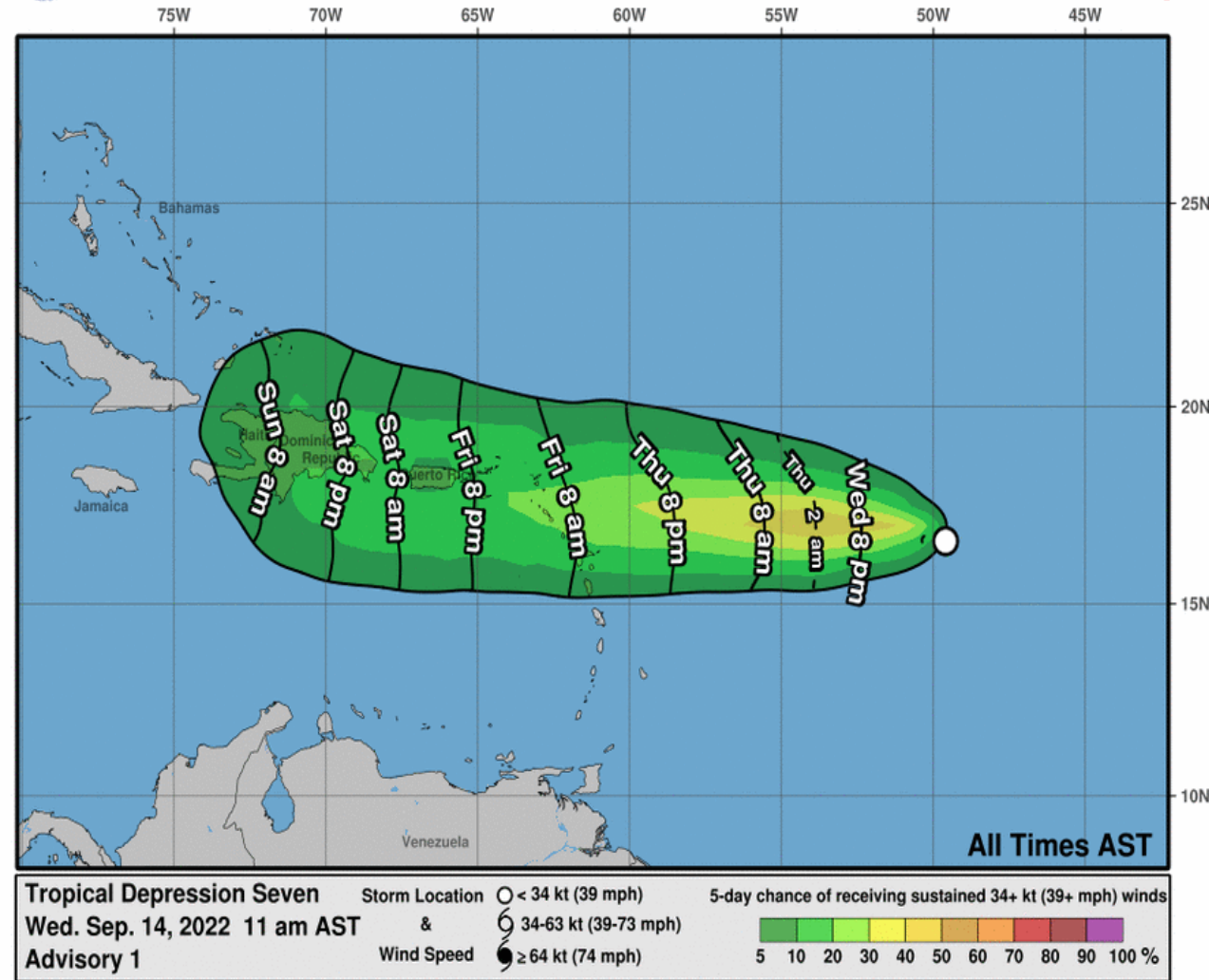


Arrival Time of Winds & Model Forecast Intensity

Tropical Depression Seven ([LINK](#))



Earliest Reasonable Arrival Time of Tropical-Storm-Force Winds

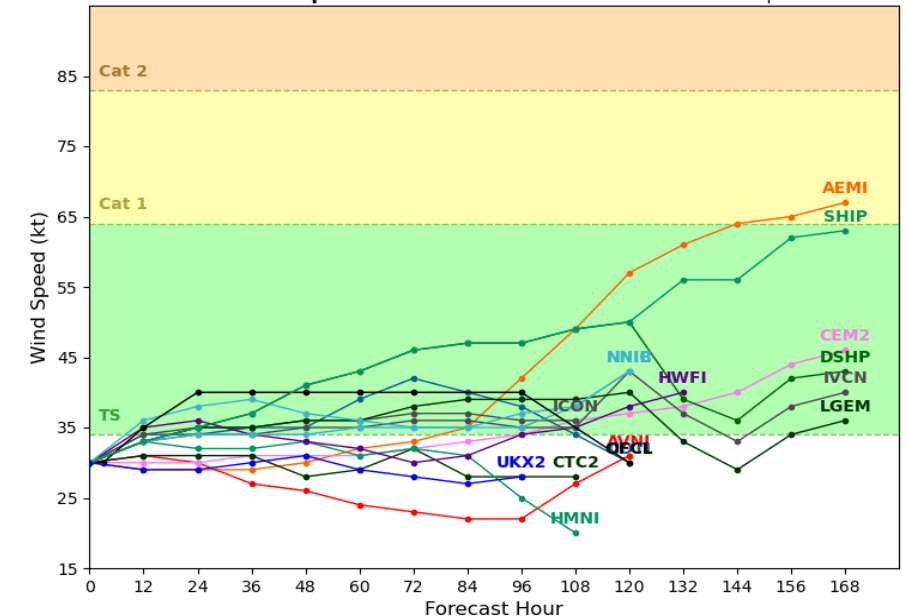


Moderate westerly shear and dry air are expected to prevent significant intensification, but gradual strengthening is possible over the next day or two. There is decent agreement across computer model guidance that TD #7 could become a tropical storm tonight or Thursday. After the system moves into the eastern Caribbean, wind shear is forecast to increase (more unfavorable conditions). As shown in this morning's computer model guidance, TD #7 may struggle to maintain its intensity. As we near the latter parts of the forecast period, additional land interaction may work to weaken the system later Sunday into Monday over the island of Hispanola.

Tropical Depression 07L Model Intensity Guidance

Initialized at 12z Sep 14 2022

Levi Cowan - tropicaltidbits.com

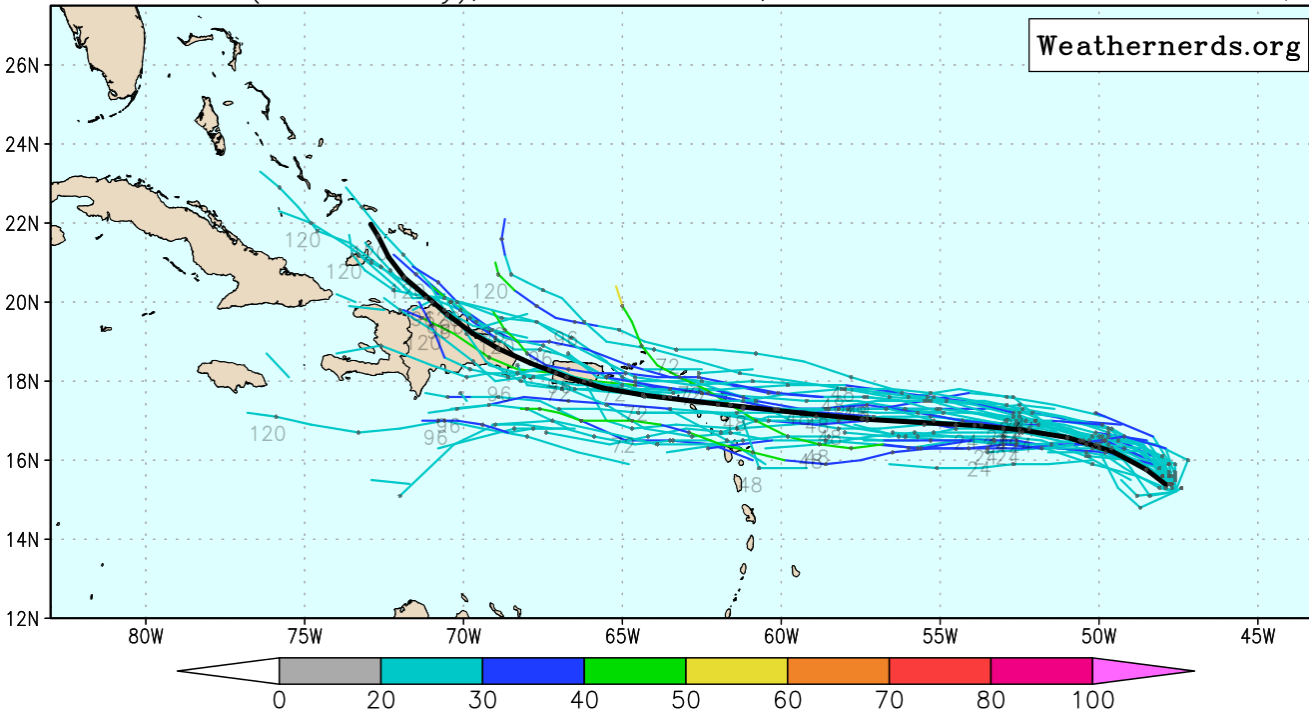




Model Forecasts – Next 5 Days

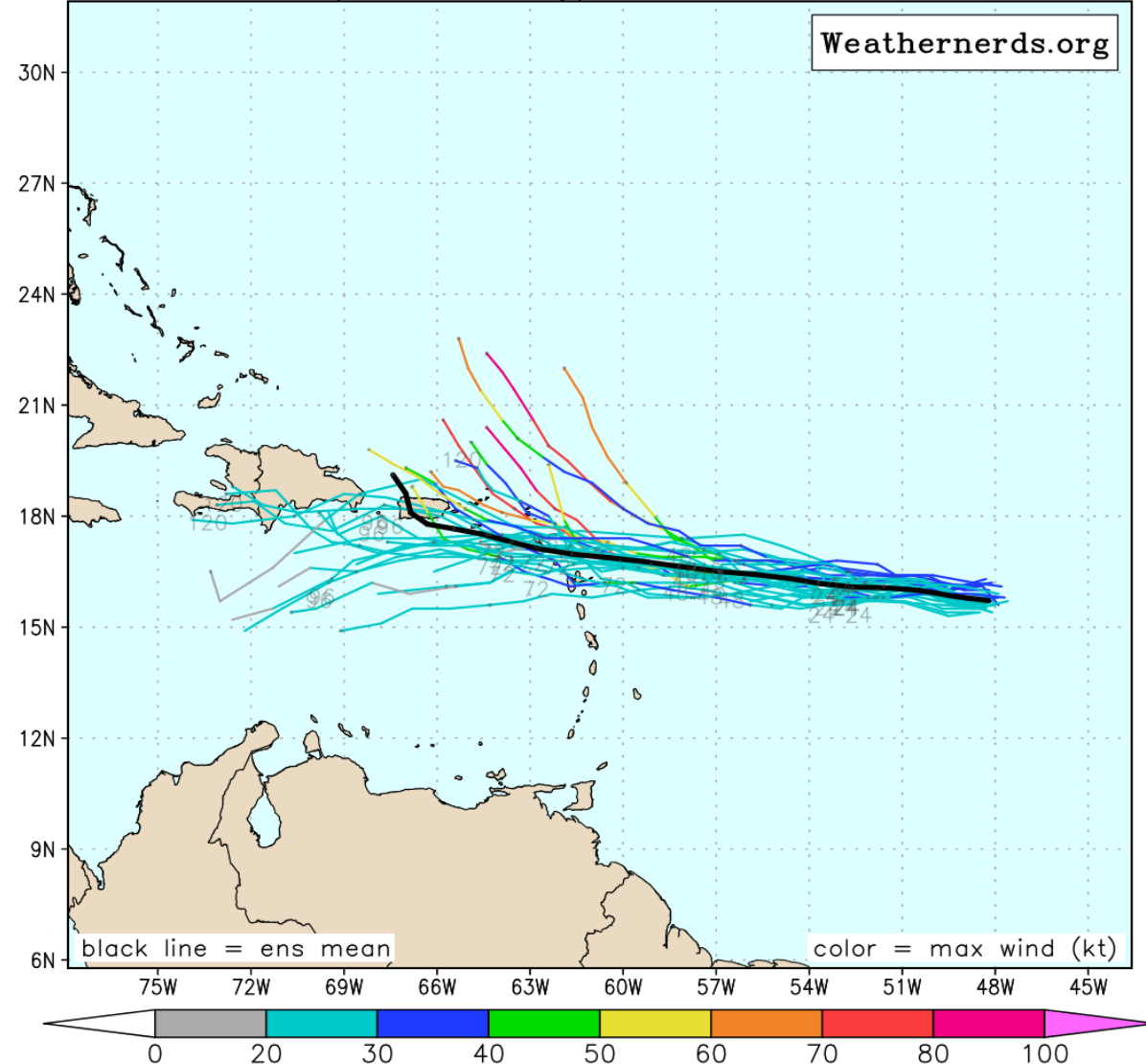
Tropical Depression Seven

ECMWF Ens. (0–120h only), init: 2022091400, AL96 Invest color = max wind (kt)



Satellite imagery shows that the circulation associated with the area of low pressure has become better defined; although, much of the shower and thunderstorm activity is still confined to the eastern side of the system. TD #7 is forecast to move slightly north of west along the southern periphery of a strong area of high pressure over the western-central Atlantic. There is decent model agreement over the next 5 days that TD #7 will continue its westerly motion, nearing the Leeward Islands around Friday. The system will generally reach the USVI and Puerto Rico in about 3-4 days. There is some model disagreement with respect to TD #7's forward speed; however, as the system continues to organize, computer models will work toward better initializing the system's track and speed. Current trends across computer model guidance show a *weaker system* generally remaining on a westerly track, and a *stronger system* gradually developing a northwesterly component of motion.

GEFS Ensemble (0–120 h only) , init: 2022091406, AL96 Invest





Overall Summary

Tropical Depression Seven:

- At 11:00 AM AST, Invest 96L strengthened into Tropical Depression Seven. The system is located about 805 miles east of the Leeward Islands, and is moving westward at 14 mph.
- A general westward motion is expected to continue during the next few days.
- On the forecast track, the center of TD #7 is forecast to move through the Leeward Islands on Friday or Friday night, and be near the Virgin Islands and Puerto Rico this weekend.
- Maximum sustained winds are near 35 mph, with higher gusts. Some gradual strengthening is forecast during the next day or so, and the depression is forecast to become a tropical storm tonight or Thursday.

Florida Outlook:

- Tropical Depression Seven poses no threat to Florida over the next 7 days, but will continue to be monitored as it nears the Leeward Islands later this week.
- The next name on the list is Fiona.

The next briefing packet will be issued Thursday morning. For the latest information on the tropics, please visit the National Hurricane Center website at www.hurricanes.gov.



TROPICAL UPDATE



Created by:

Caitlyn Gillespie, Deputy State Meteorologist

Caitlyn.Gillespie@em.myflorida.com

State Meteorological Support Unit

Florida Division of Emergency Management

Users wishing to subscribe (approval pending) to this distribution list, register at:

https://public.govdelivery.com/accounts/FLDEM/subscriber/new?topic_id=SERT_Met_Tropics.

Other reports available for subscription are available at:

<https://public.govdelivery.com/accounts/FLDEM/subscriber/new?preferences=true>