



TROPICAL UPDATE



8:00 AM EDT

Saturday, June 4, 2022

Potential Tropical Cyclone One

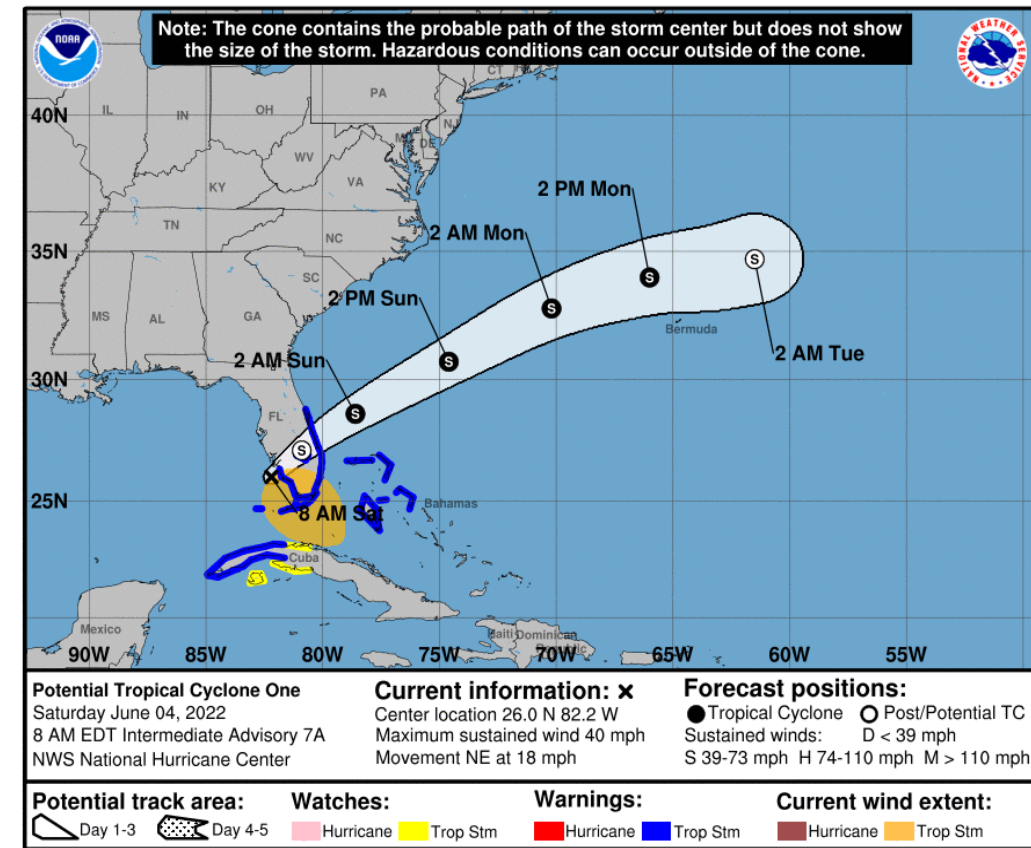
This update is intended for government and emergency response officials, and is provided for informational and situational awareness purposes only. Forecast conditions are subject to change based on a variety of environmental factors. For additional information, or for any life safety concerns with an active weather event please contact your County Emergency Management or Public Safety Office, local National Weather Service forecast office, or visit the National Hurricane Center website at www.hurricanes.gov.



Potential Tropical Cyclone One

8 AM EDT Saturday: Florida Threats & Changes Since Last Packet

	MINIMAL	LOW	MODERATE	HIGH	EXTREME
WINDS					
STORM SURGE					
FLASH FLOODING					
TORNADOES					
	LOW	MODERATE	HIGH		
RIP CURRENTS					

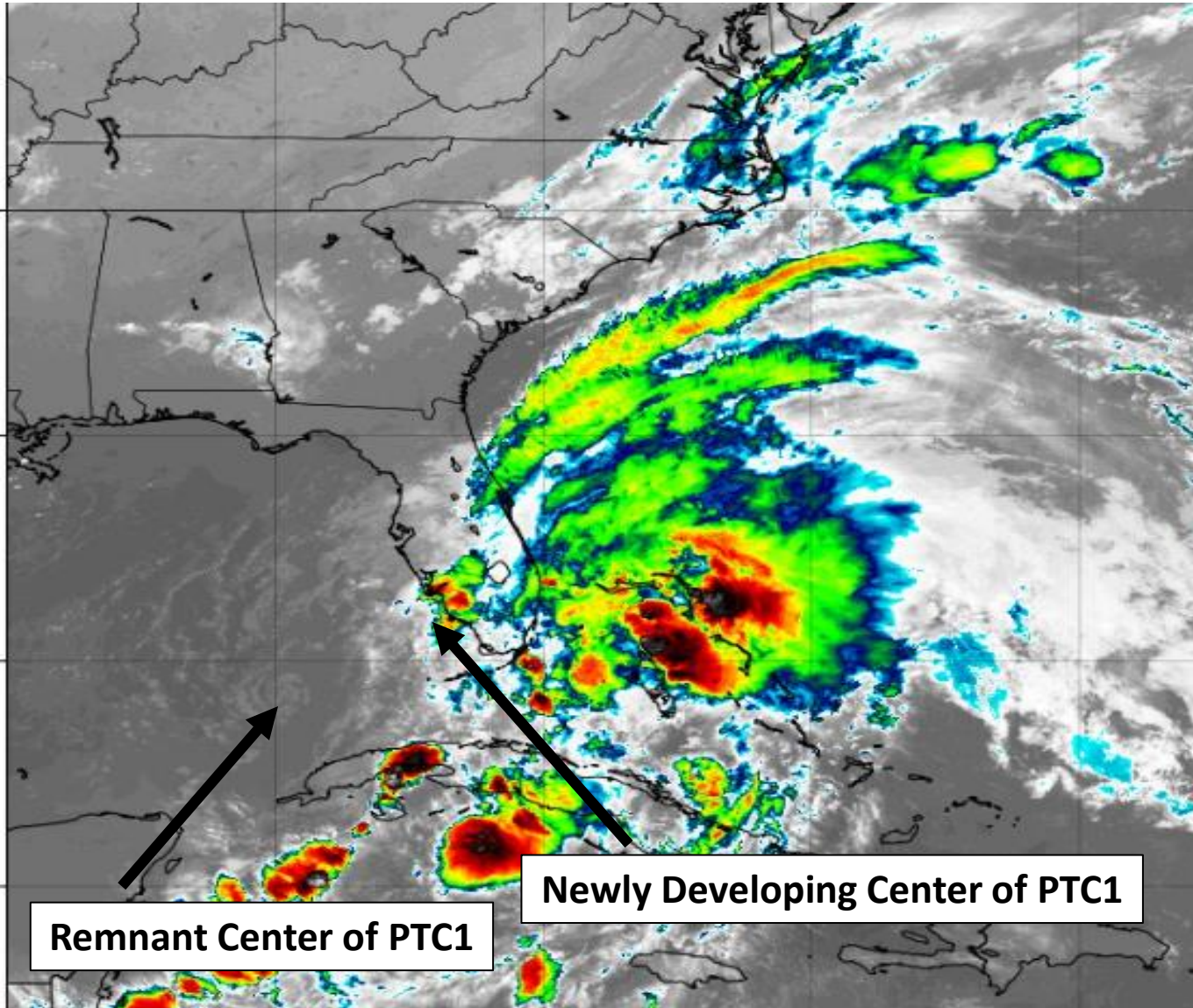


Overview/Recent Changes: The organization of PTC#1 over the southeastern Gulf of Mexico has continued to deteriorate overnight. It continued to lack a well-defined center but is producing occasional wind gusts to 40-50mph. Forecasts indicate that PTC #1 will not become Tropical Storm Alex until after it crosses Florida and moves into the open western Atlantic Ocean. Heavy rainfall leading to flash flooding continues to be the main concern this morning. Occasional gusty winds, isolated tornadoes, coastal flooding and rip currents are also possible. Conditions will improve this afternoon.



Satellite Imagery

Potential Tropical Cyclone One

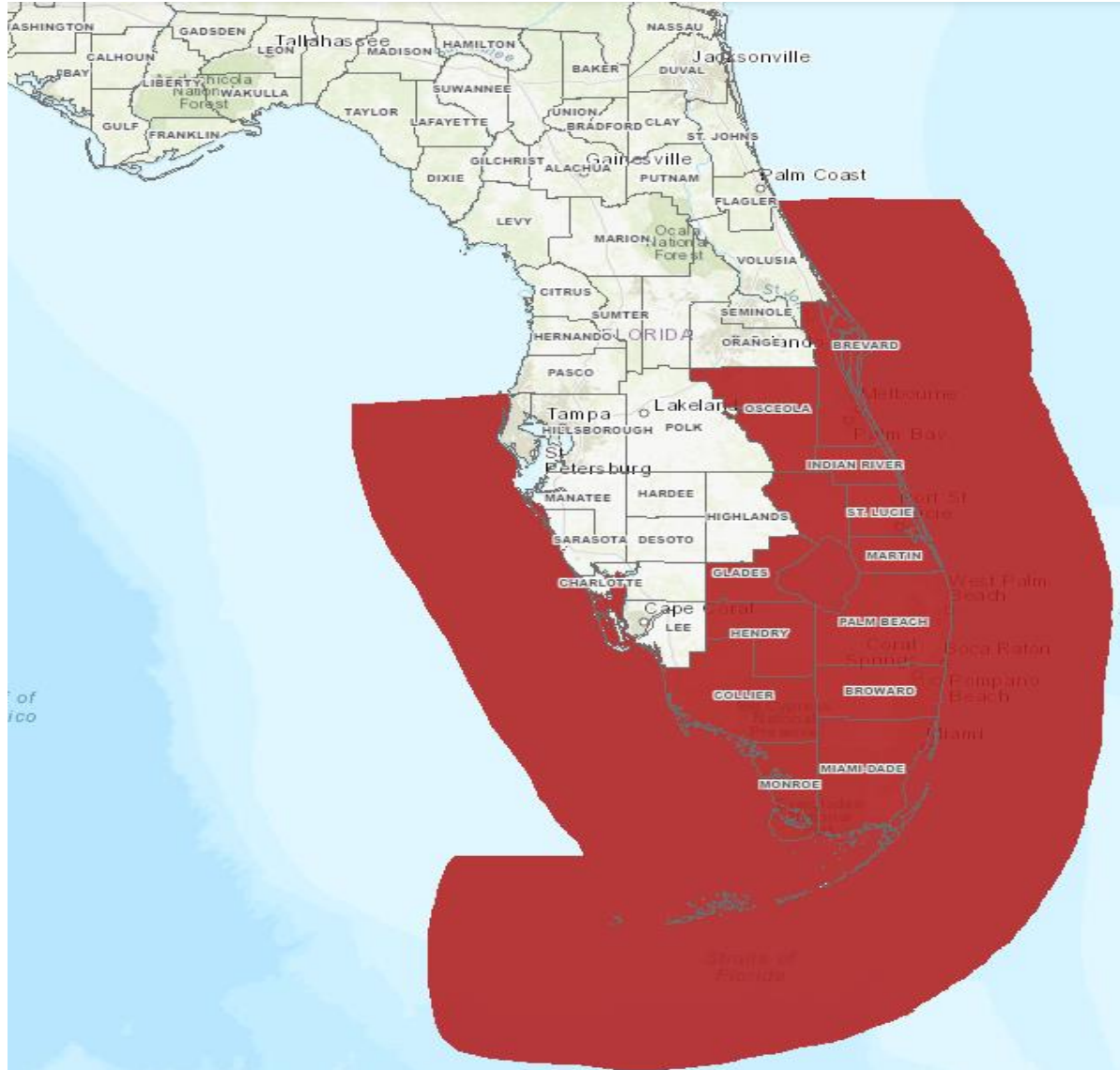


PTC #1 remains poorly disorganized with all of the thunderstorm activity displaced on the eastern side due to wind shear. A developing center of the system is located near the southwest Florida Coast, however, the system has multiple low and mid-level circulations which could re-form a new center off the Florida East Coast later today.



Tropical Storm Warnings

Potential Tropical Cyclone One

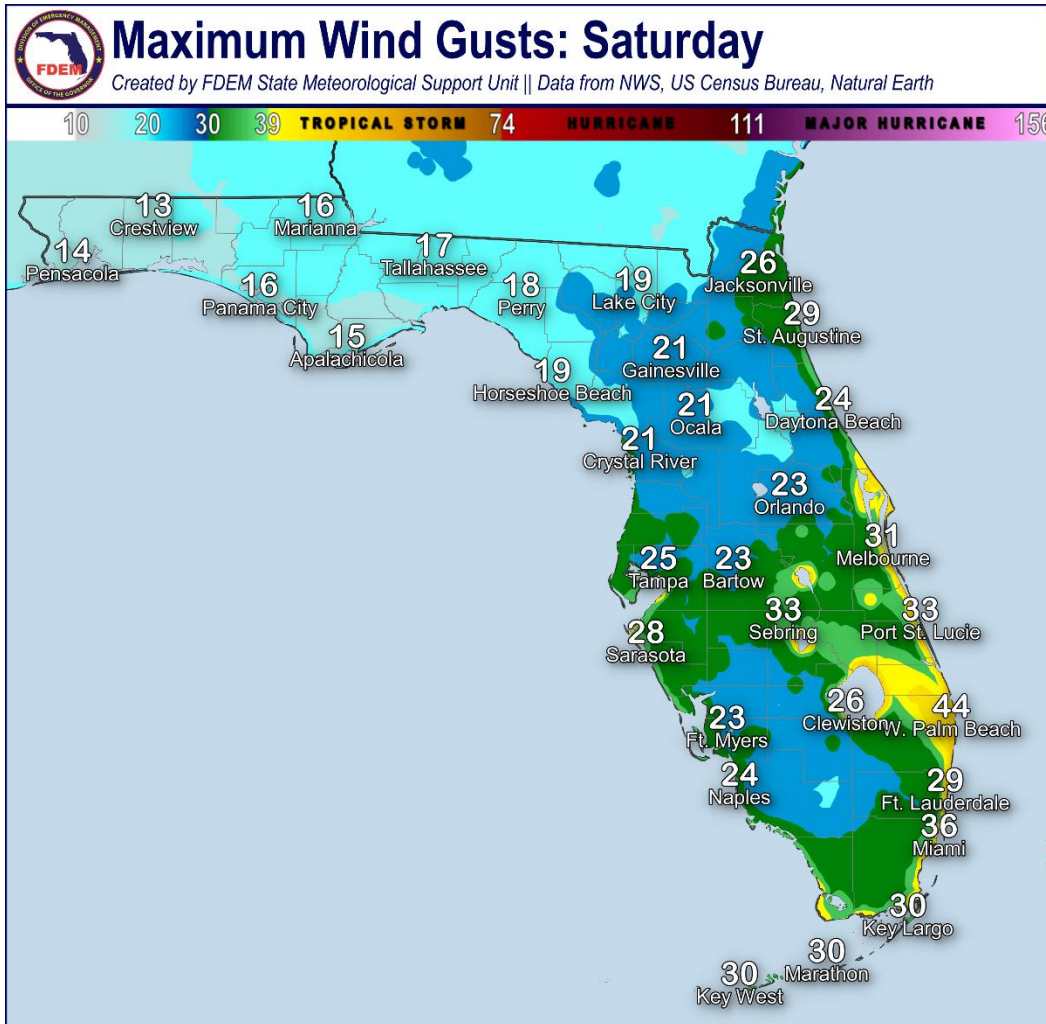


- Tropical Storm Warnings in effect for:
 - Brevard, Broward, Collier, Glades, Hendry, Indian River, Martin, Miami-Dade, Monroe, Okeechobee, Osceola, Palm Beach, St. Lucie
- Coastal waters from Flagler Beach southward, the entire Florida Keys, and along the Florida West Coast south of Tarpon Springs (not including Tampa Bay).
- Will likely be discontinued later today.



Forecast Wind Gusts

Exact wind gusts will vary in time, magnitude, and location



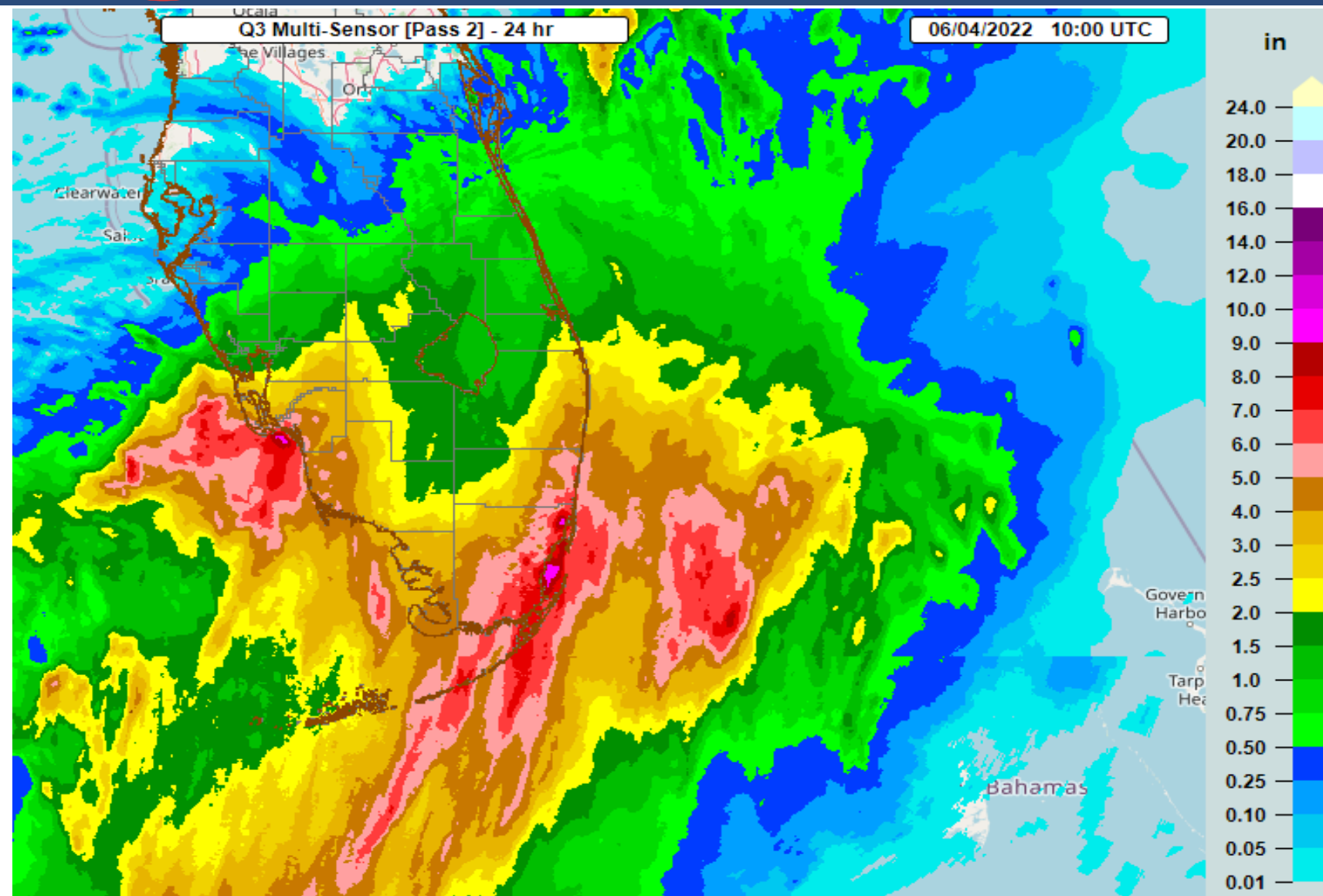
Wind gusts of 25-45mph will be possible through tonight, even after PTC #1 exits the East Coast. Locally higher wind gusts cannot be ruled out within embedded thunderstorms.

Potential damage may include:

- Localized power outages
- Loose outdoor objects on decks and patios may be blown over
- Minor damage to porches, awnings, carports, and sheds
- Tree limbs broken off



Radar Estimated Rainfall – Past 24 hours

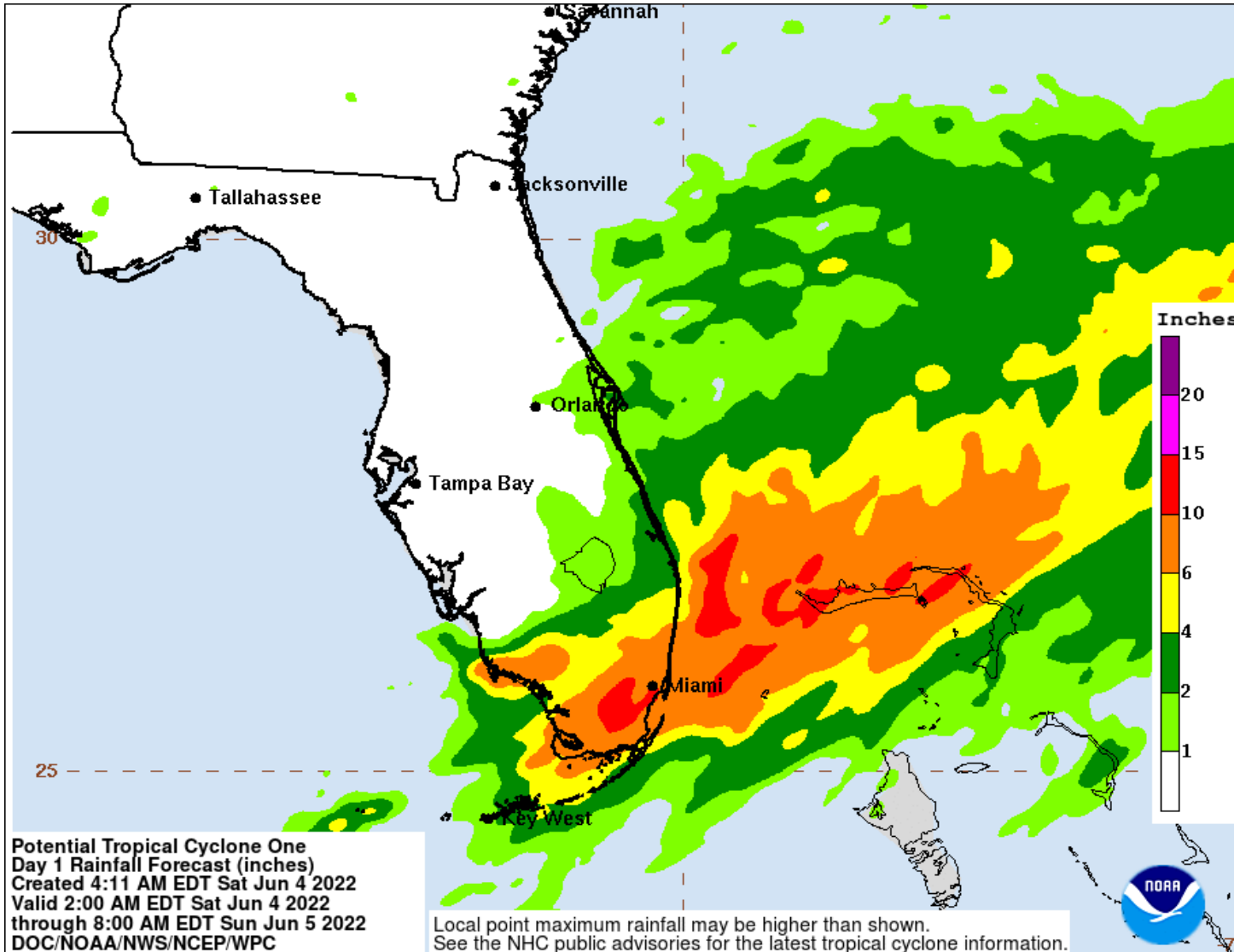


- Since 5am Friday, an estimated 3-6" of rain has fallen across coastal portions of South Florida.
- Higher totals near 7-10" have fallen over portions of the middle and upper Keys, metro Miami-Dade, metro Broward and coastal Lee County.



Rainfall Totals Next 24 Hours

Ending 8 AM ET Sunday

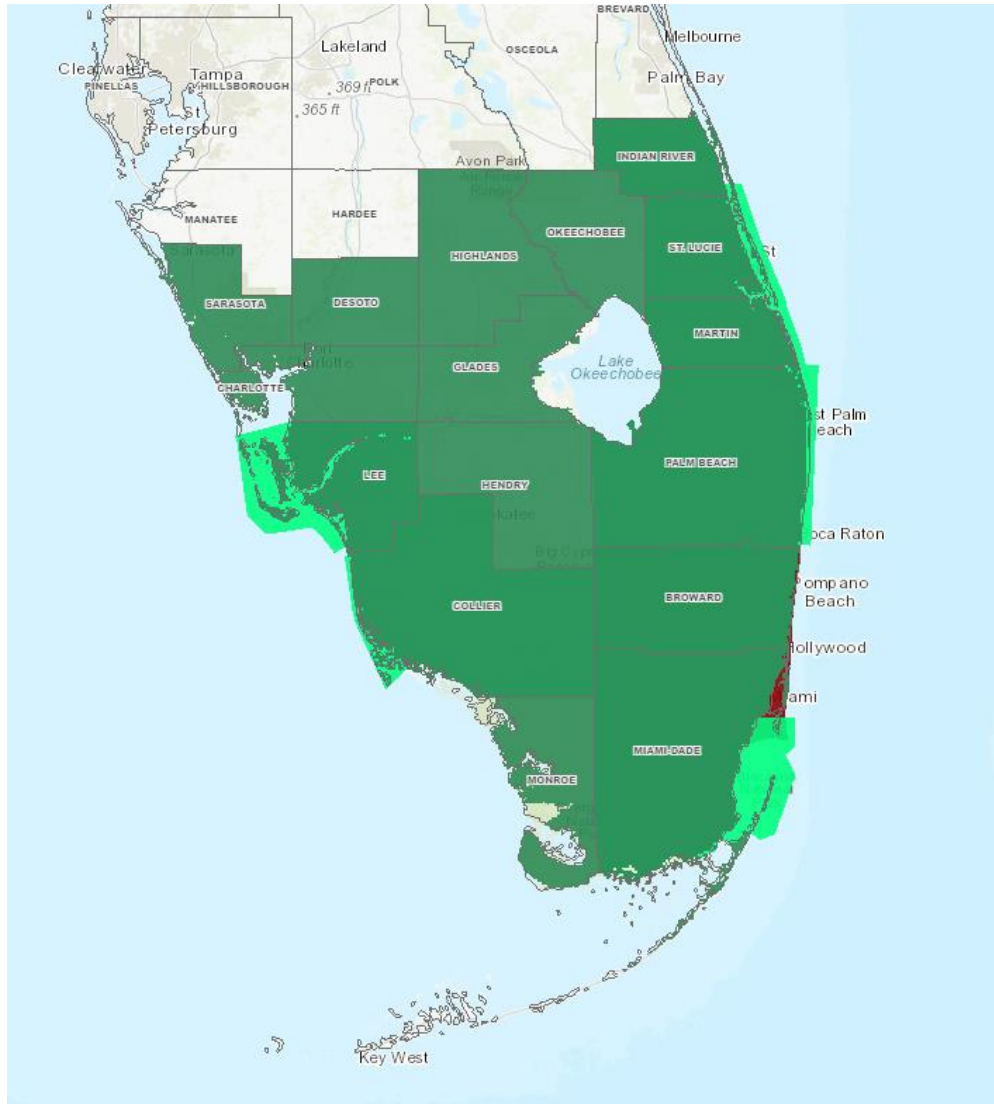


- Moderate to heavy rain will linger across South Florida through this afternoon.
- **An additional 4-10" is currently forecast for South Florida areas near and south of I-75, with localized areas of 12+" possible.**
- An additional 1-4" of rain is forecast for the Palm Beaches and Treasure Coast.



Flood Watch

From the National Weather Service



Flood Watch in effect until Saturday Night for Florida Keys, Okeechobee, Indian River, St. Lucie, Martin, Sarasota, Highlands, DeSoto, Charlotte, Lee

Flood Watch in effect until Sunday Morning for Glades, Hendry, Palm Beach, Collier, Broward, Miami-Dade, Mainland Monroe

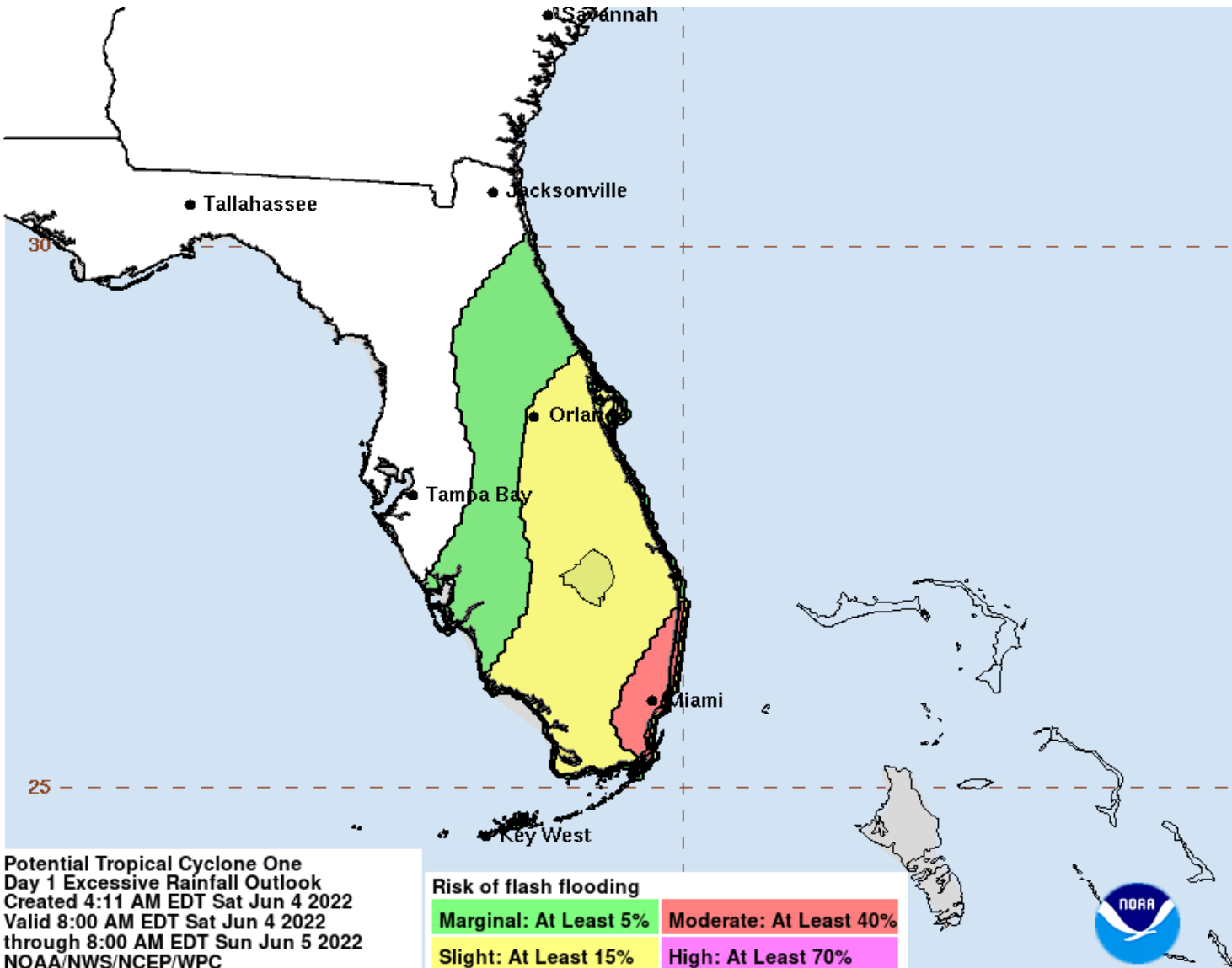
Potential impacts include:






- Street and area flooding with low spots possibly becoming impassable to vehicles.
- Rivers, creeks and streams may rise out of their banks.



Flash Flood Outlooks

From the Weather Prediction Center ([LINK](#))



Understanding WPC Excessive Rainfall Risk Categories				
No Area/Label	MARGINAL (MRGL)	SLIGHT (SLGT)	MODERATE (MDT)	HIGH (HIGH)
Flash floods are generally not expected. @NWSWPC	Isolated flash floods possible Localized and primarily affecting places that can experience rapid runoff with heavy rainfall.	Scattered flash floods possible Mainly localized. Most vulnerable are urban areas, roads, small streams and washes. Isolated significant flash floods possible.	Numerous flash floods likely Numerous flash flooding events with significant events possible. Many streams may flood, potentially affecting larger rivers.	Widespread flash floods expected Severe, widespread flash flooding. Areas that don't normally experience flash flooding, could. Lives and property in greater danger.
Flash flooding near me? Flash Flooding NO Flash Flooding				
 WEATHER PREDICTION CENTER				

Heavy rainfall could result in **considerable flash flooding** across Southeast Florida and isolated flash flooding across the remainder of South Florida and East Central Florida. Urban areas will be most at risk of impactful street flooding.

Risk of flash flooding

Marginal: At Least 5%

Moderate: At Least 40%

Slight: At Least 15%

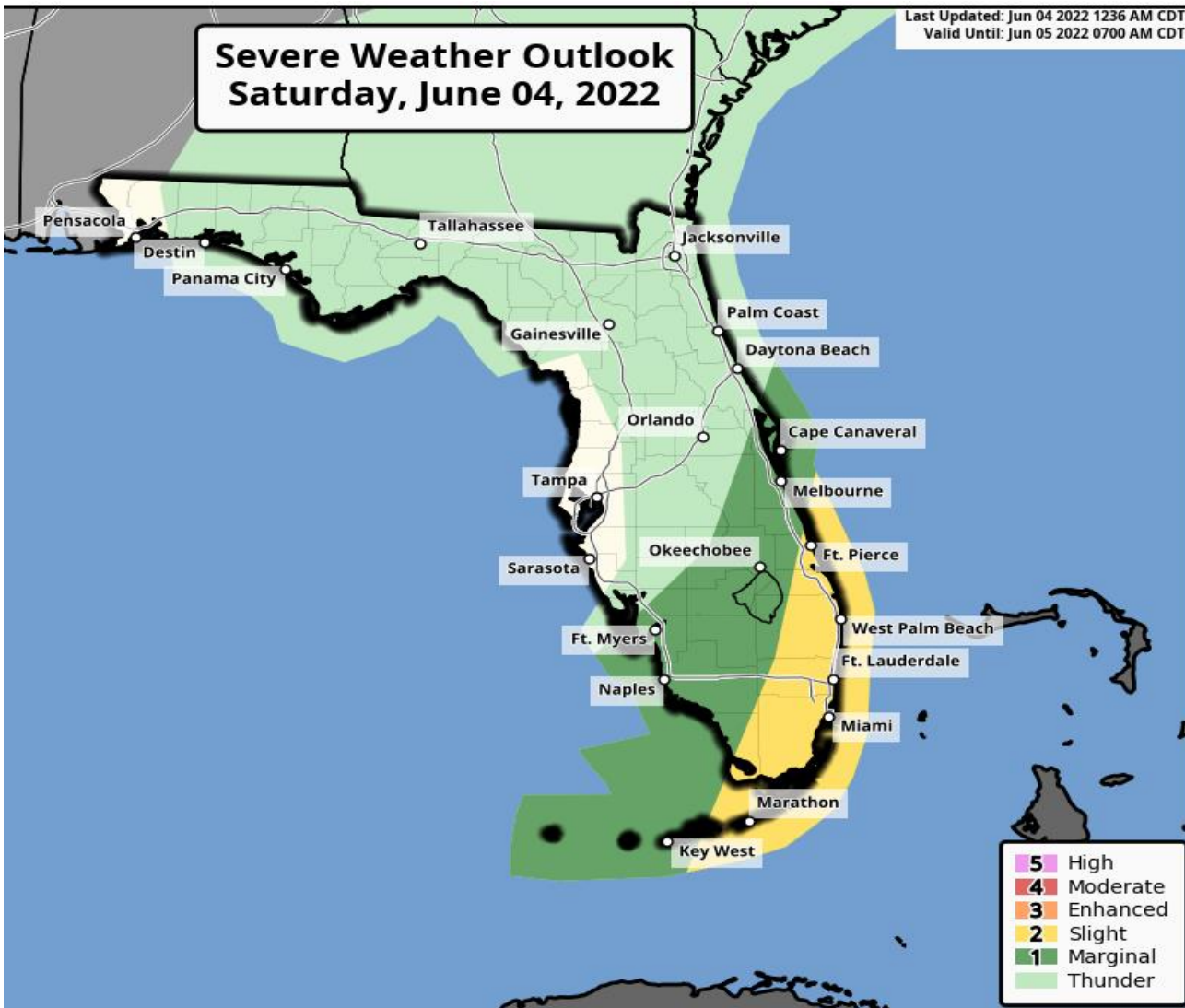
High: At Least 70%

Potential Tropical Cyclone One
Day 1 Excessive Rainfall Outlook
Created 4:11 AM EDT Sat Jun 4 2022
Valid 8:00 AM EDT Sat Jun 4 2022
through 8:00 AM EDT Sun Jun 5 2022
NOAA/NWS/NCEP/WPC



Severe Weather Outlook

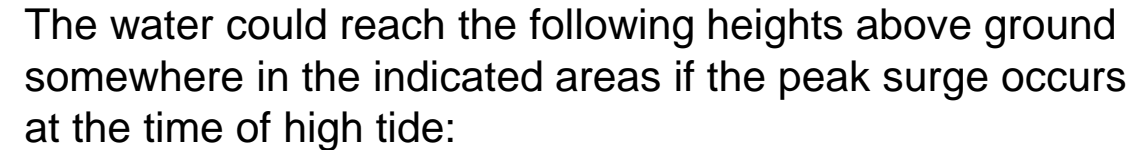
From the Storm Prediction Center (SPC)



As PTC One crosses the state today, isolated tornadoes cannot be ruled out along the Florida Keys and portions of South Florida and East Central Florida.

Understanding Severe Thunderstorm Risk Categories

THUNDERSTORMS (no label)	1 - MARGINAL (MRGL)	2 - SLIGHT (SLGT)	3 - ENHANCED (ENH)	4 - MODERATE (MDT)	5 - HIGH (HIGH)
No severe* thunderstorms expected	Isolated severe thunderstorms possible	Scattered severe storms possible	Numerous severe storms possible	Widespread severe storms likely	Widespread severe storms expected
Lightning/flooding threats exist with <u>all</u> thunderstorms	Limited in duration and/or coverage and/or intensity	Short-lived and/or not widespread, isolated intense storms possible	More persistent and/or widespread, a few intense	Long-lived, widespread and intense	Long-lived, very widespread and particularly intense



Middle of Longboat Key to Marco Island...1-2 ft

Charlotte Harbor...1-2 ft

Florida Keys and Dry Tortugas...1-2 ft

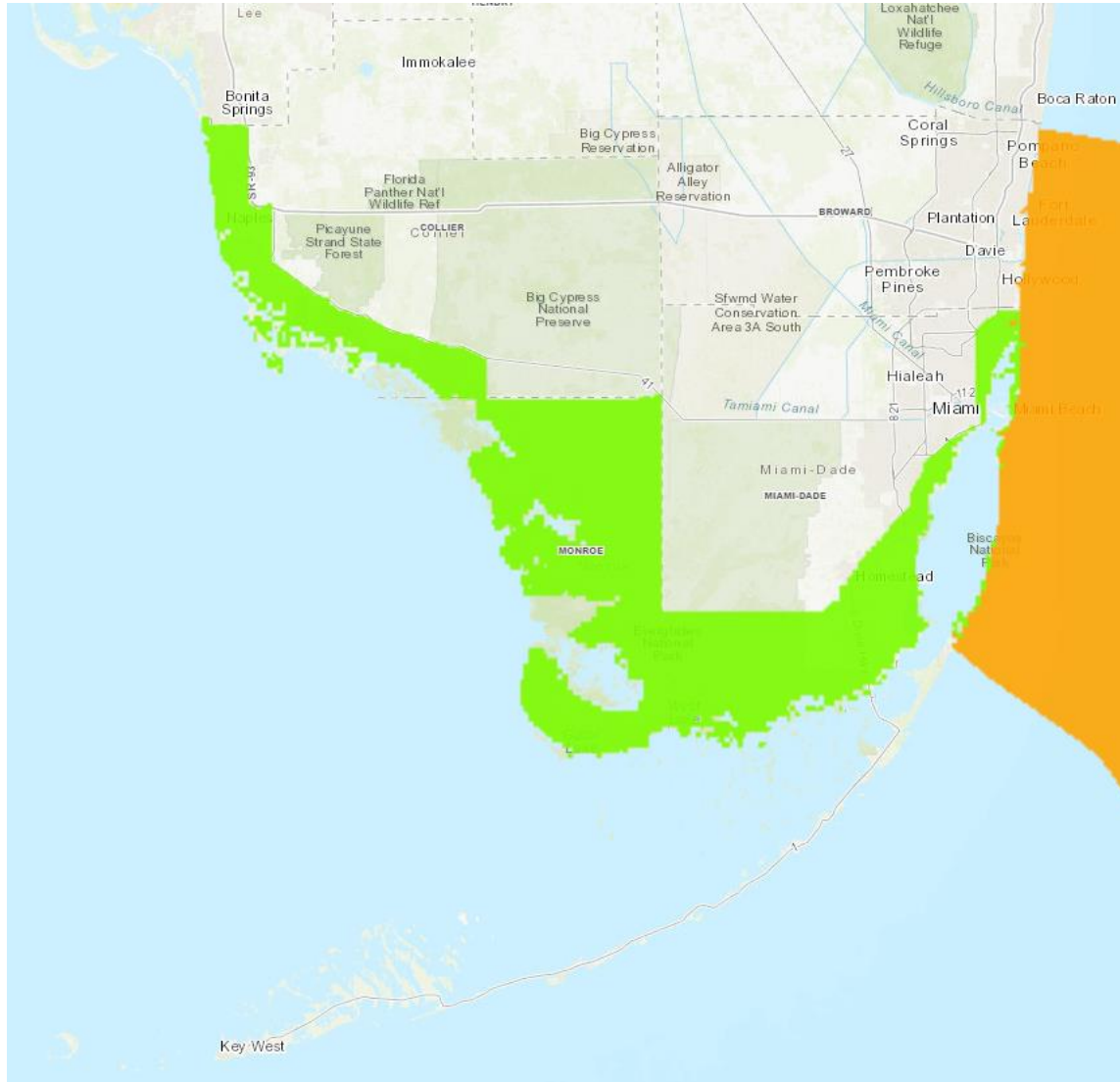
Card Sound Bridge to North Miami Beach, including Biscayne Bay...1-2 ft

Potential impacts include:

- Localized flooding along immediate shorelines and in low-lying spots.
- Sections of waterfront streets and parking lots may be flooded.
- Beach erosion.
- Minor damage possible to marinas, docks, boardwalks, and piers. A few small craft may break away from moorings.



Coastal Flood Advisory

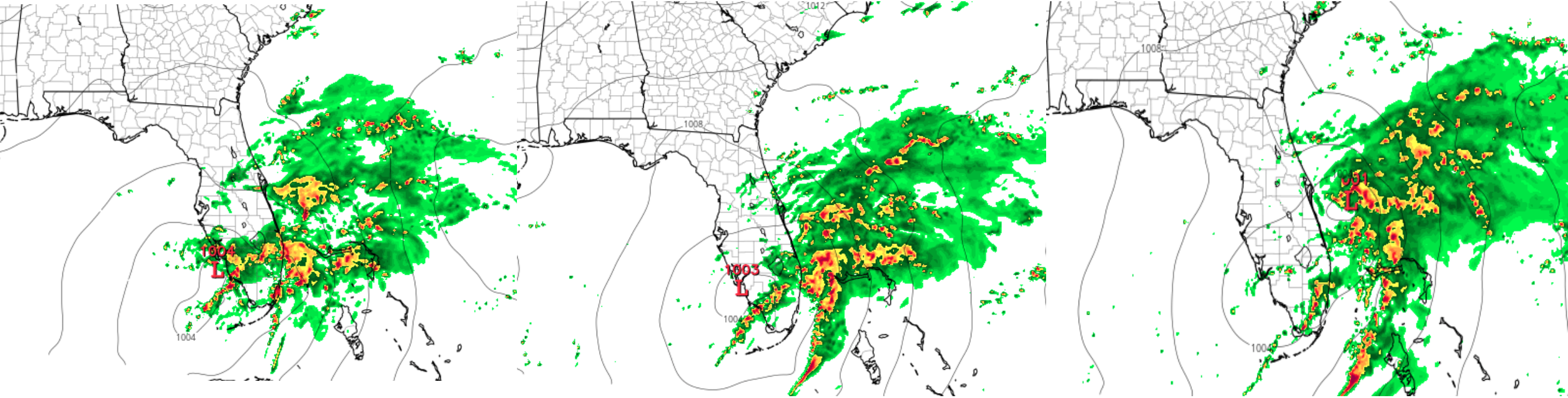


- Coastal Flood Advisory in effect from 2AM TO 11 PM EDT SATURDAY
- Coastal Collier, Coastal Miami-Dade, Mainland Monroe
- High rip current risk through Sunday morning



Model Forecast Radar

*****Only Model Guidance – Time & Position Will Vary*****



9 AM ET

12 PM ET

3 PM ET

Conditions should improve for most areas by mid-day, with lingering rain bands continuing across South Florida until this evening. Rain chances decrease after sunset.



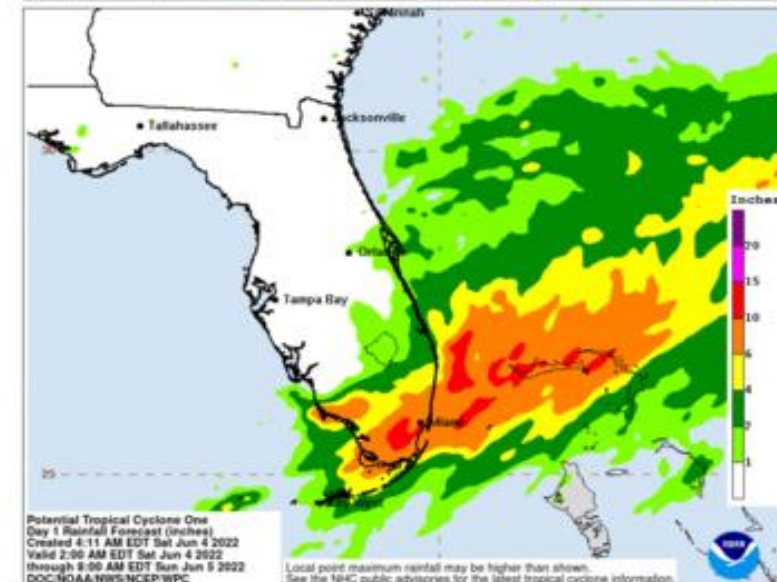
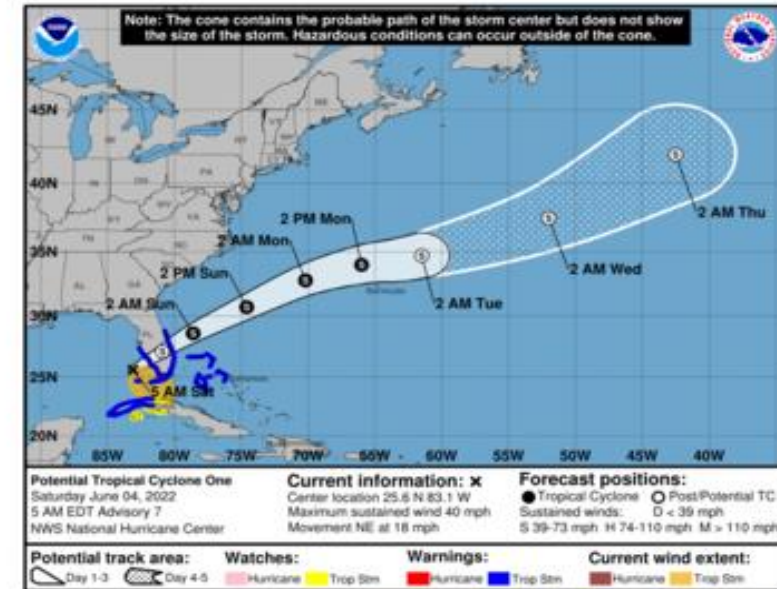
Key Messages for Potential Tropical Cyclone One

Advisory 7: 5:00 AM EDT Sat Jun 04, 2022



1. Heavy rainfall will continue to affect portions of South Florida and the Keys as well as the northwestern Bahamas today. Considerable flash and urban flooding is expected across South Florida. Flash and urban flooding is possible across the Florida Keys and the northwestern Bahamas.

2. Tropical storm conditions are expected in the warning area in Florida today, mainly in squalls, and in the northwestern Bahamas by this afternoon.



For more information go to hurricanes.gov



Overall Summary

Potential Tropical Cyclone One:

- At 8:00 AM EDT Saturday, Potential Tropical Cyclone #1 (PTC #1) was located approximately 45 miles south-southwest of Fort Myers, Florida.
- The system is moving faster toward the northeast near 18 mph, and this general motion is expected to continue through tonight. A turn toward the east-northeast with an additional increase in forward speed is expected on Sunday. On the forecast track, the disturbance is expected to move across southern or central Florida today, over the southwestern Atlantic north of the Bahamas tonight, and near or to the north of Bermuda on Monday.
- Maximum sustained winds remain near 40 mph with higher gusts, mainly in squalls. The disturbance is expected to become a tropical storm off the east coast of Florida tonight, and some strengthening is forecast tonight through Monday as the system moves farther away from Florida over the western Atlantic.
- A Tropical Storm Warning remains in effect from Longboat Key (Sarasota/Manatee border) southward along the Florida West Coast, the entire Florida Keys, and along the Florida East Coast south of the Brevard/Volusia County line. Inland Tropical Storm Watches are also in effect.

Florida Outlook:

- Showers and storms will continue to affect portions of South Florida and southern Central Florida through Saturday evening.
- An additional 4-8" of rain is forecast for South Florida and the Florida Keys Friday with locally higher amounts up to 10-15" possible. An additional 1-4" is forecast for Southwest Florida, the Palm Beaches and Treasure Coast.
- A Flood Watch remains in effect for portions of Central and South Florida.
- Isolated waterspouts/tornadoes are also possible across South Florida and East Central Florida today.
- Minor coastal flooding around high tide is possible along the Florida Keys.

The next briefing packet will be provided Saturday afternoon. For the latest information on the tropics, please visit the National Hurricane Center website at www.hurricanes.gov.



TROPICAL UPDATE



Created by:

Amy Godsey, Chief State Meteorologist

Amy.Godsey@em.myflorida.com

State Meteorological Support Unit

Florida Division of Emergency Management

Users wishing to subscribe (approval pending) to this distribution list, register at:

https://public.govdelivery.com/accounts/FLDEM/subscriber/new?topic_id=SERT_Met_Tropics.

Other reports available for subscription are available at:

<https://public.govdelivery.com/accounts/FLDEM/subscriber/new?preferences=true>