



TROPICAL UPDATE



5:00 PM EDT

Friday, June 3, 2022

Potential Tropical Cyclone One

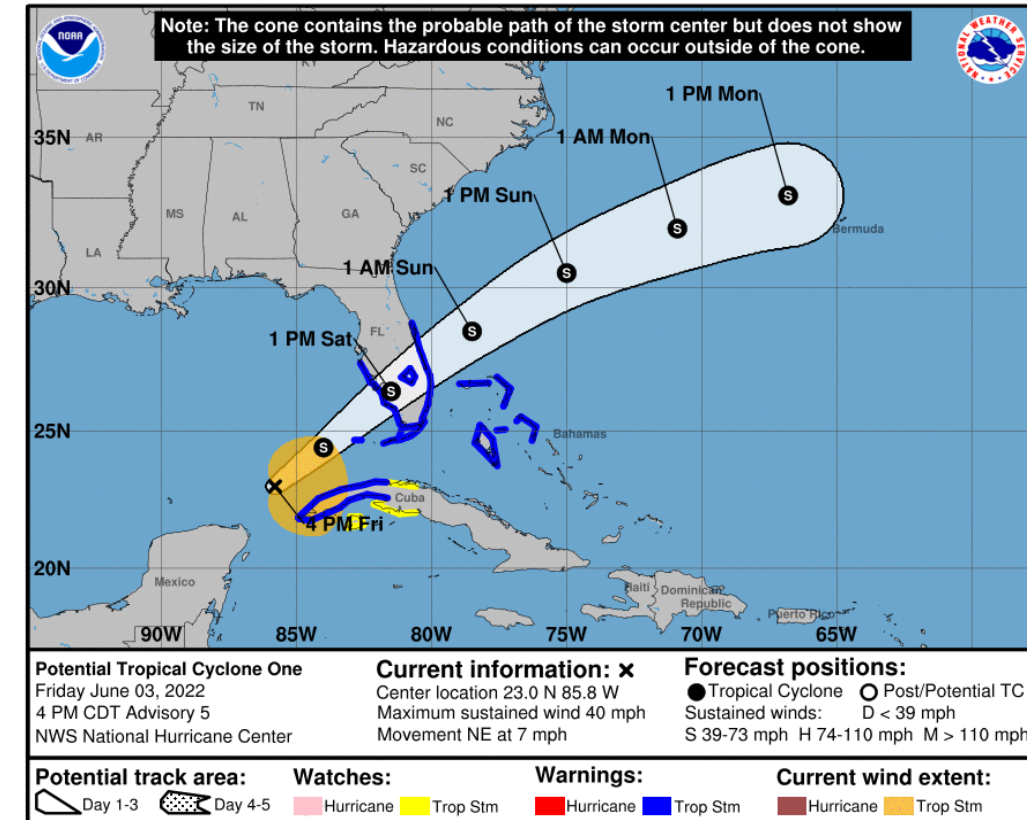
This update is intended for government and emergency response officials, and is provided for informational and situational awareness purposes only. Forecast conditions are subject to change based on a variety of environmental factors. For additional information, or for any life safety concerns with an active weather event please contact your County Emergency Management or Public Safety Office, local National Weather Service forecast office, or visit the National Hurricane Center website at www.hurricanes.gov.



Potential Tropical Cyclone One

5 PM EDT Friday: Florida Threats & Changes Since Last Packet

	MINIMAL	LOW	MODERATE	HIGH	EXTREME
WINDS					
STORM SURGE					
FLASH FLOODING					
TORNADOES					
	LOW	MODERATE	HIGH		
RIP CURRENTS					



Overview/Recent Changes: PTC #1 is producing tropical storm-force winds, with maximum sustained winds of 40 mph, but has changed little in organization today. Forecasts indicate that PTC #1 should become Tropical Storm Alex tonight or early Saturday morning before moving across the southern Florida Peninsula. Heavy rainfall leading to flash flooding continues to be the main concern, but gusty winds, isolated tornadoes, coastal flooding and rip currents are also possible. **Tropical Storm Warnings** remain in effect across portions of Central Florida, and all of South Florida and the Florida Keys.

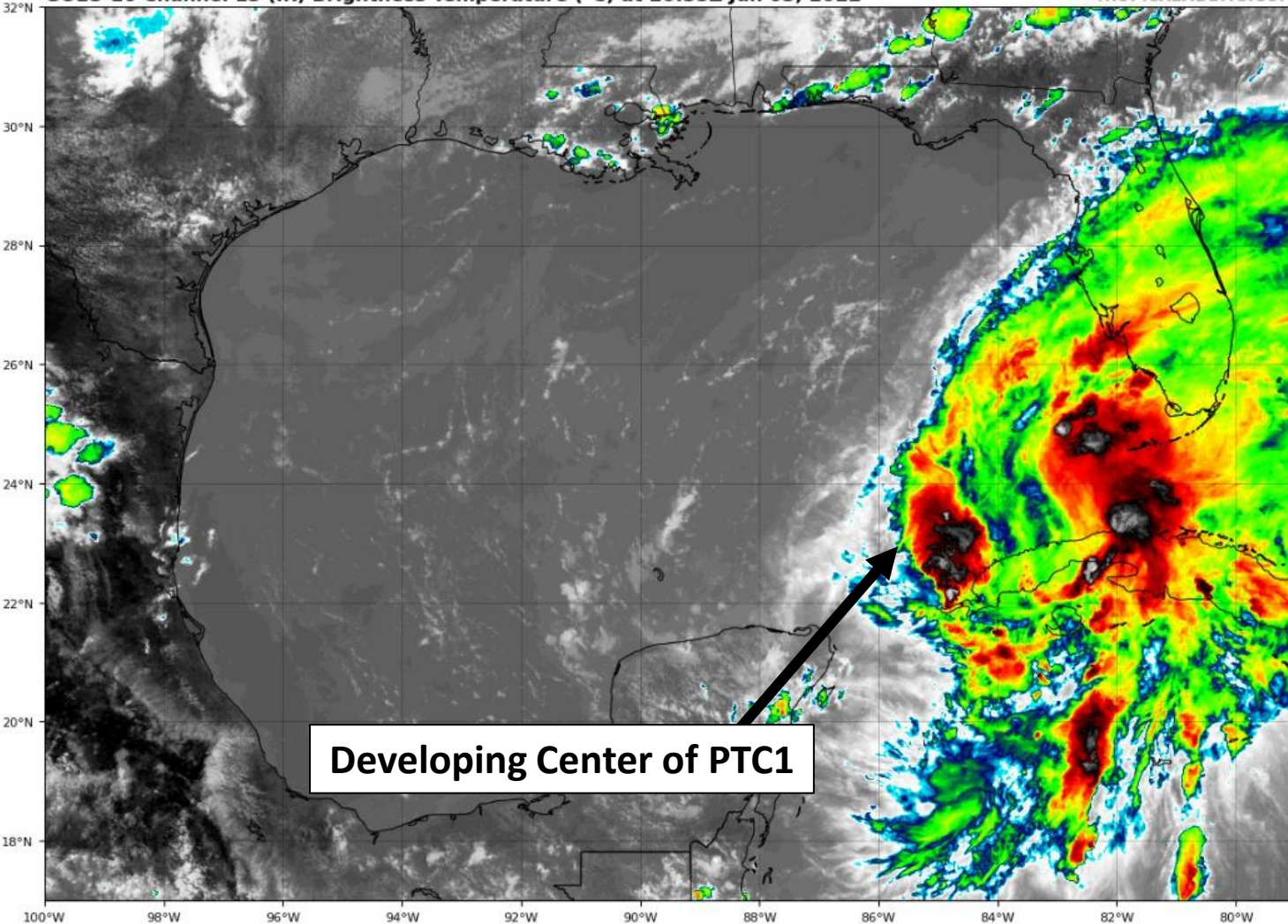


Satellite Imagery

Potential Tropical Cyclone One

GOES-16 Channel 13 (IR) Brightness Temperature (°C) at 20:35Z Jun 03, 2022

TROPICALTIDBITS.COM

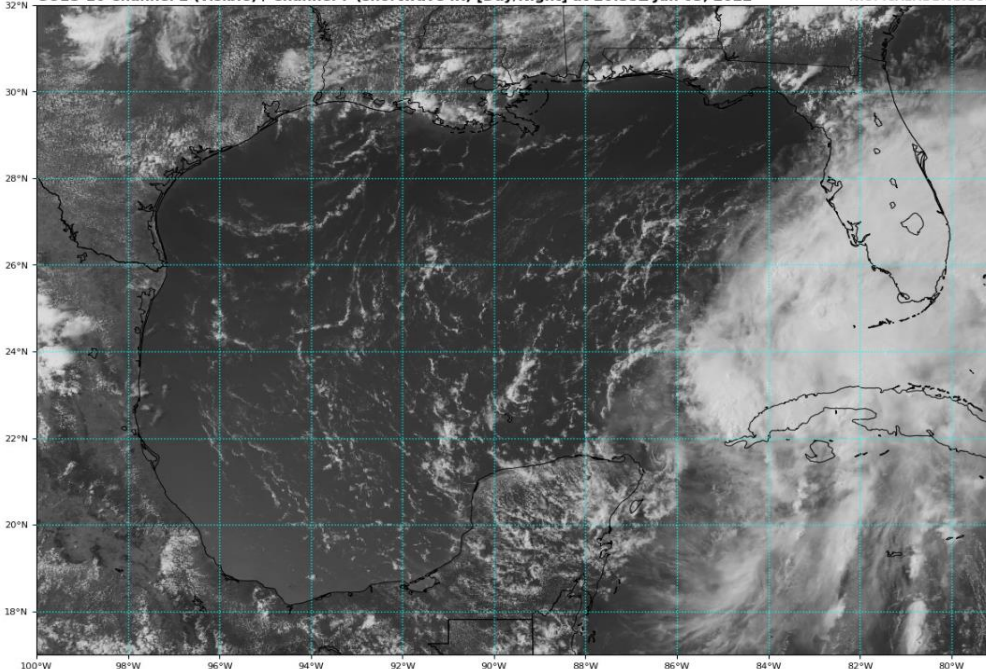


Developing Center of PTC1

PTC #1 remains disorganized with most of the thunderstorm activity displaced on the eastern side due to wind shear. A developing center of the system is located near the western tip of Cuba, however, the system has multiple low and mid-level circulations which could result in track changes if a new center develops.

GOES-16 Channel 2 (visible) / Channel 7 (shortwave IR) [Day/Night] at 20:35Z Jun 03, 2022

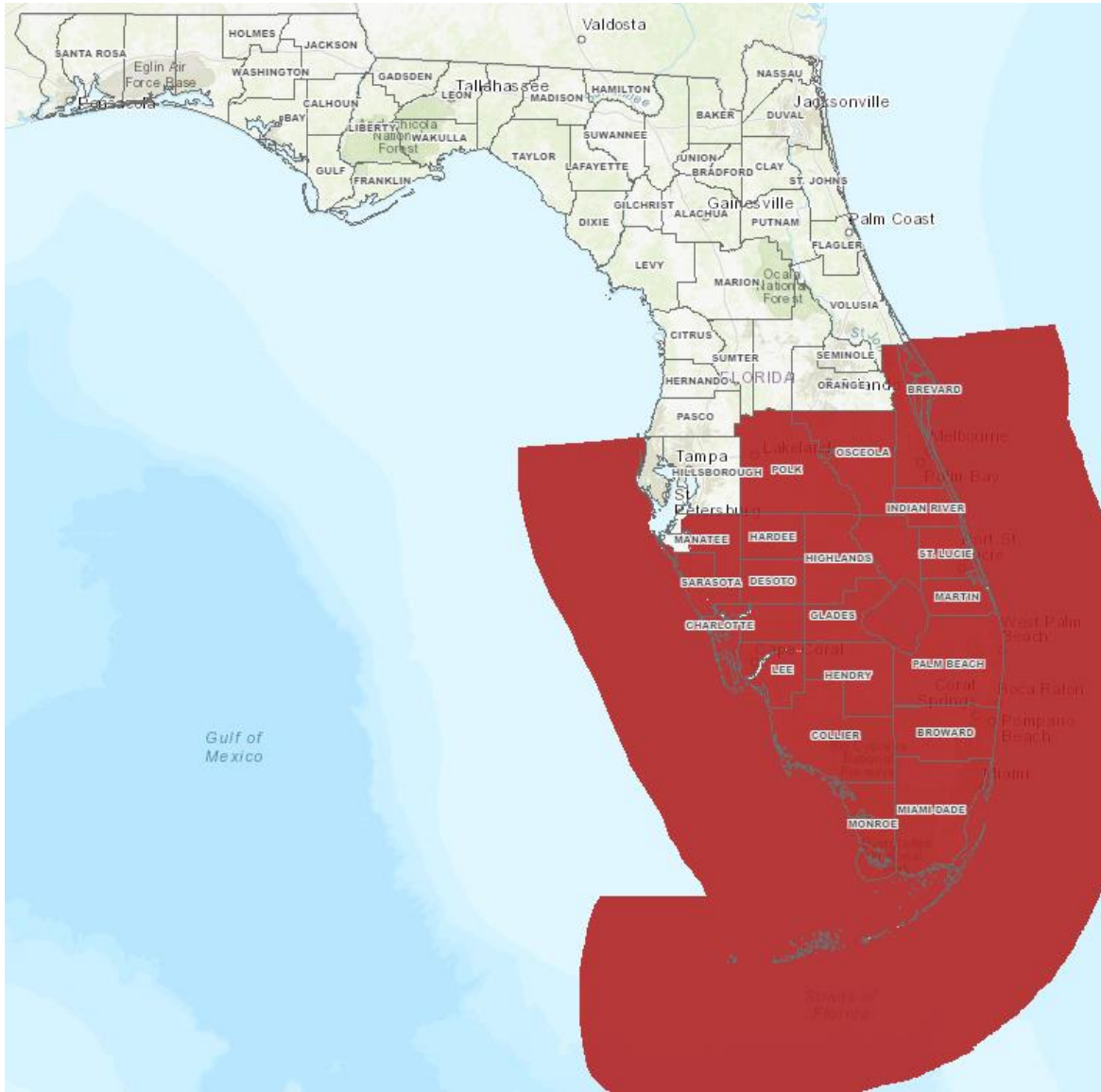
TROPICALTIDBITS.COM





Tropical Storm Warnings

Potential Tropical Cyclone One



- Tropical Storm Warnings in effect for:
 - Brevard, Broward, Charlotte, Collier, DeSoto, Glades, Hardee, Hendry, Highlands, Indian River, Lee, Manatee, Martin, Miami-Dade, Monroe, Okeechobee, Osceola, Palm Beach, Polk, Sarasota, St. Lucie
- Coastal waters from Brevard/Volusia Line southward, the entire Florida Keys, and along the Florida West Coast south of Tarpon Springs (not including Tampa Bay).

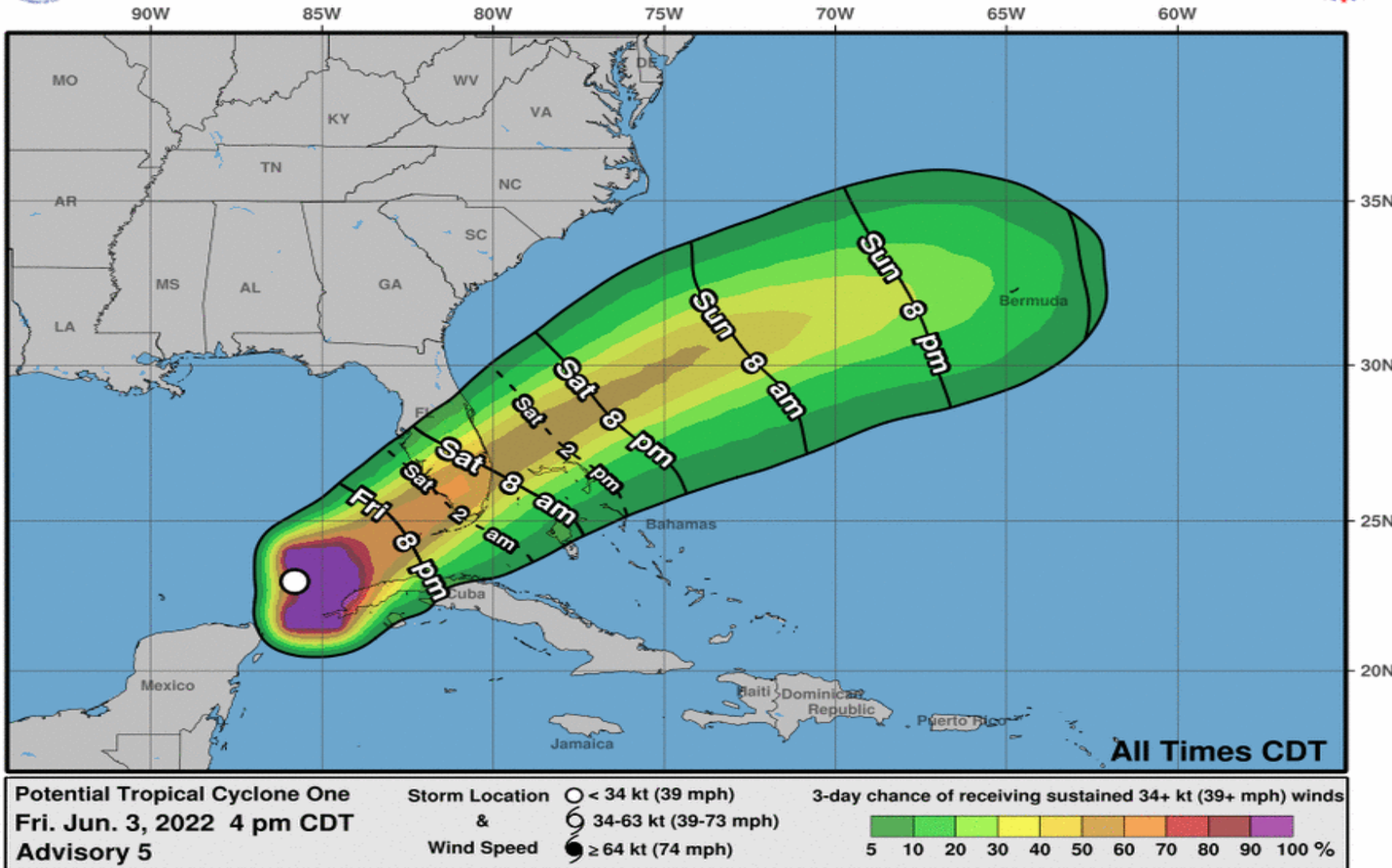


Time of Arrival of Winds

From the National Hurricane Center (NHC)



0-3 Day Earliest Reasonable Arrival Time of Tropical-Storm-Force Winds



- Tropical storm conditions are expected in the warning area through tonight and on Saturday.



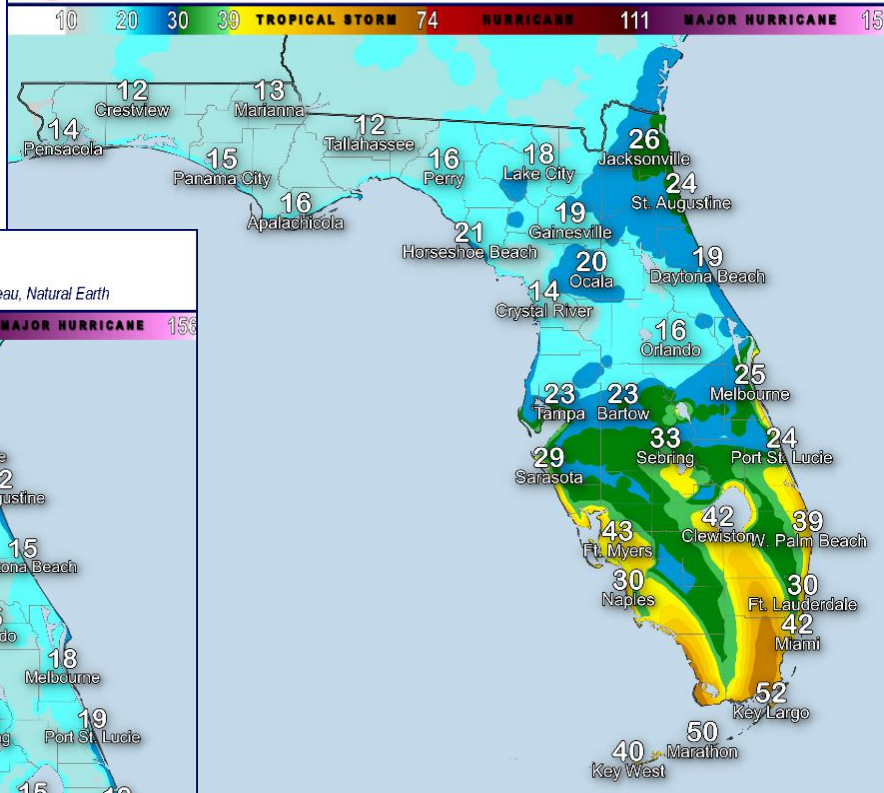
Forecast Wind Gusts

Exact wind gusts will vary in time, magnitude, and location



Maximum Wind Gusts: Saturday

Created by FDEM State Meteorological Support Unit || Data from NWS, US Census Bureau, Natural Earth



Winds will begin increasing Friday into Saturday as PTC One approaches South Florida. Tropical storm-force wind gusts will be possible (50-60 mph) over the Florida Keys and the southern Peninsula Friday night or Saturday morning. Locally higher wind gusts cannot be ruled out within embedded tropical thunderstorms.

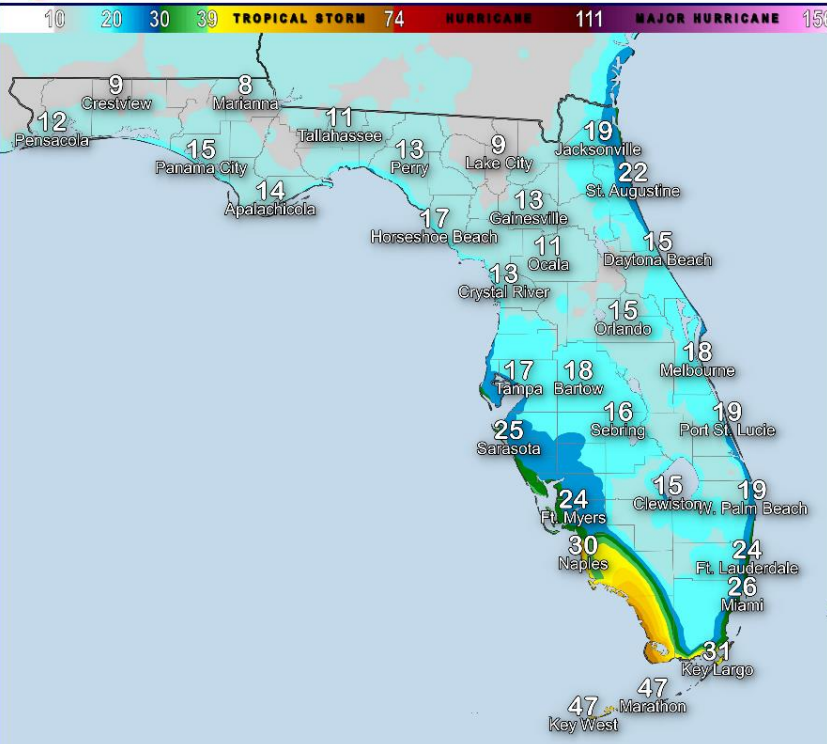
Potential damage may include:

- Localized power outages
- Loose outdoor objects on decks and patios may be blown over
- Minor damage to porches, awnings, carports, and sheds
- Tree limbs broken off. A few trees may be snapped or uprooted. Some fences and roadway signs blown over.



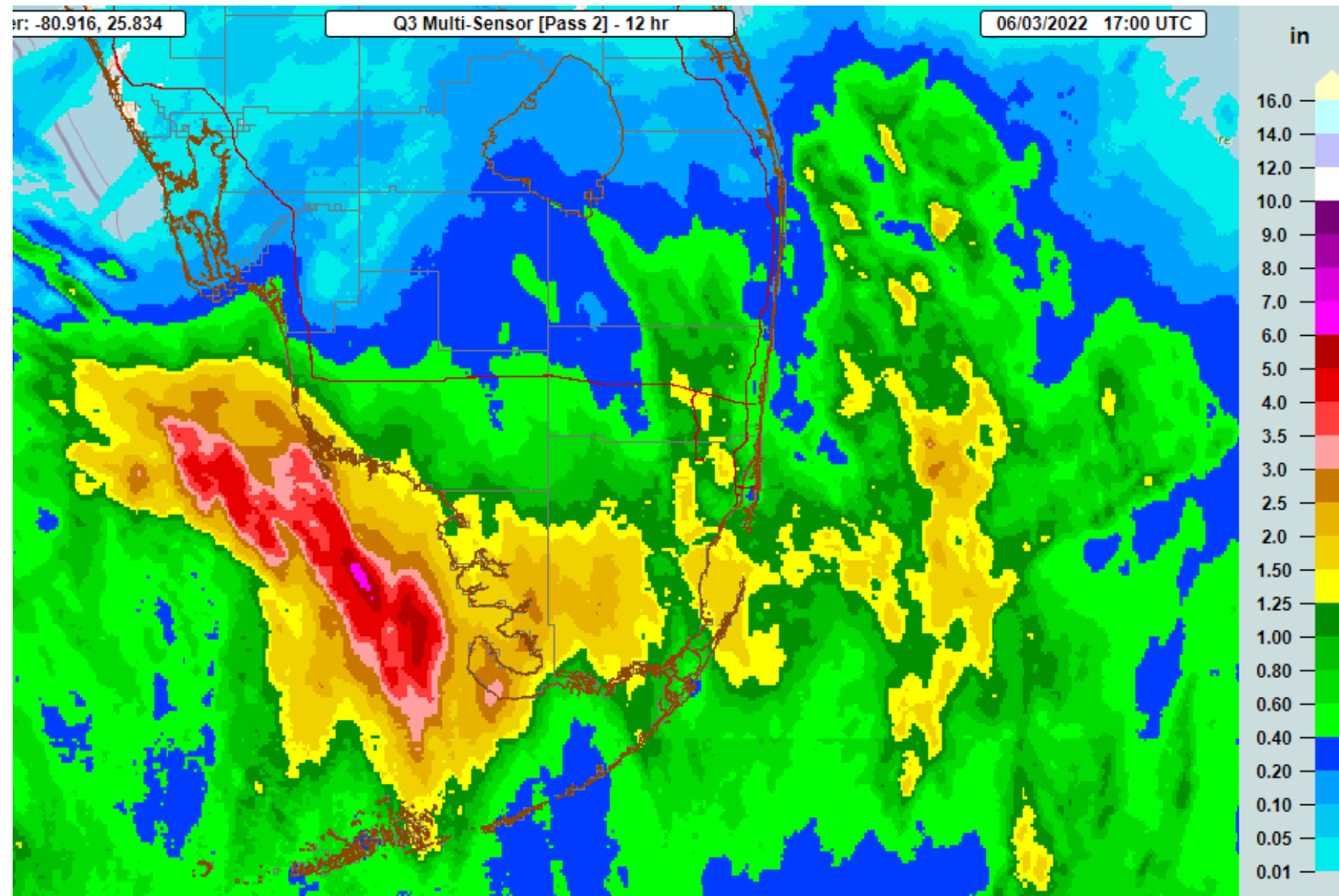
Maximum Wind Gusts: Friday

Created by FDEM State Meteorological Support Unit || Data from NWS, US Census Bureau, Natural Earth





Radar Estimated Rainfall – Past 12 hours



- Since 1am Friday, an estimated 1-3" of rain has fallen across portions of extreme southern Florida.
- A band of heavy rain has lingered just offshore of Southwest Florida but heavy cells will begin to move onshore this evening.



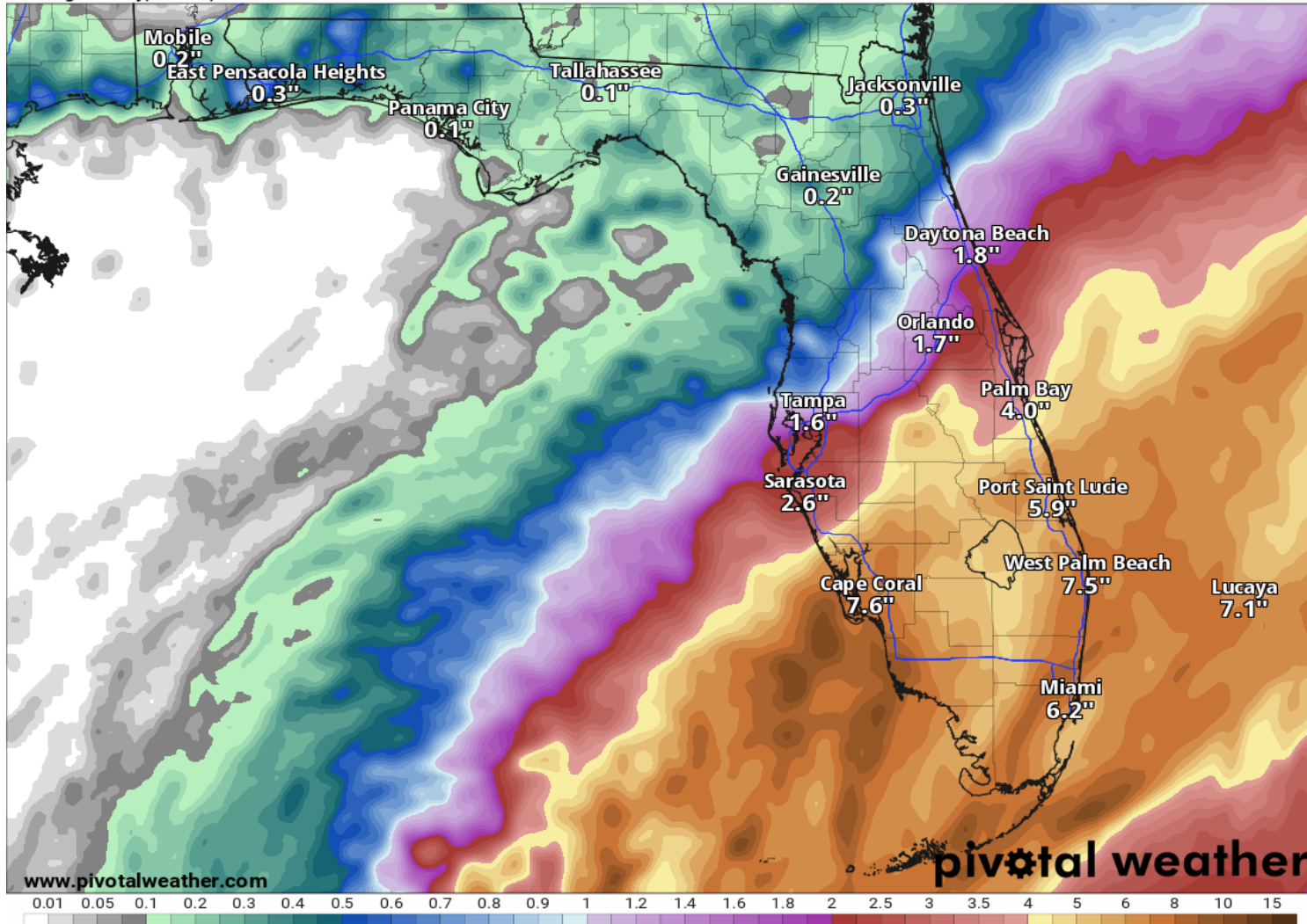
Rainfall Totals Next 48 Hours

Ending 8 AM ET Sunday

48-Hour Precipitation (in)

Ending Sunday, Jun. 5, 2022 at 8 a.m. EDT

Init: Fri 2022-06-03 12z WPC

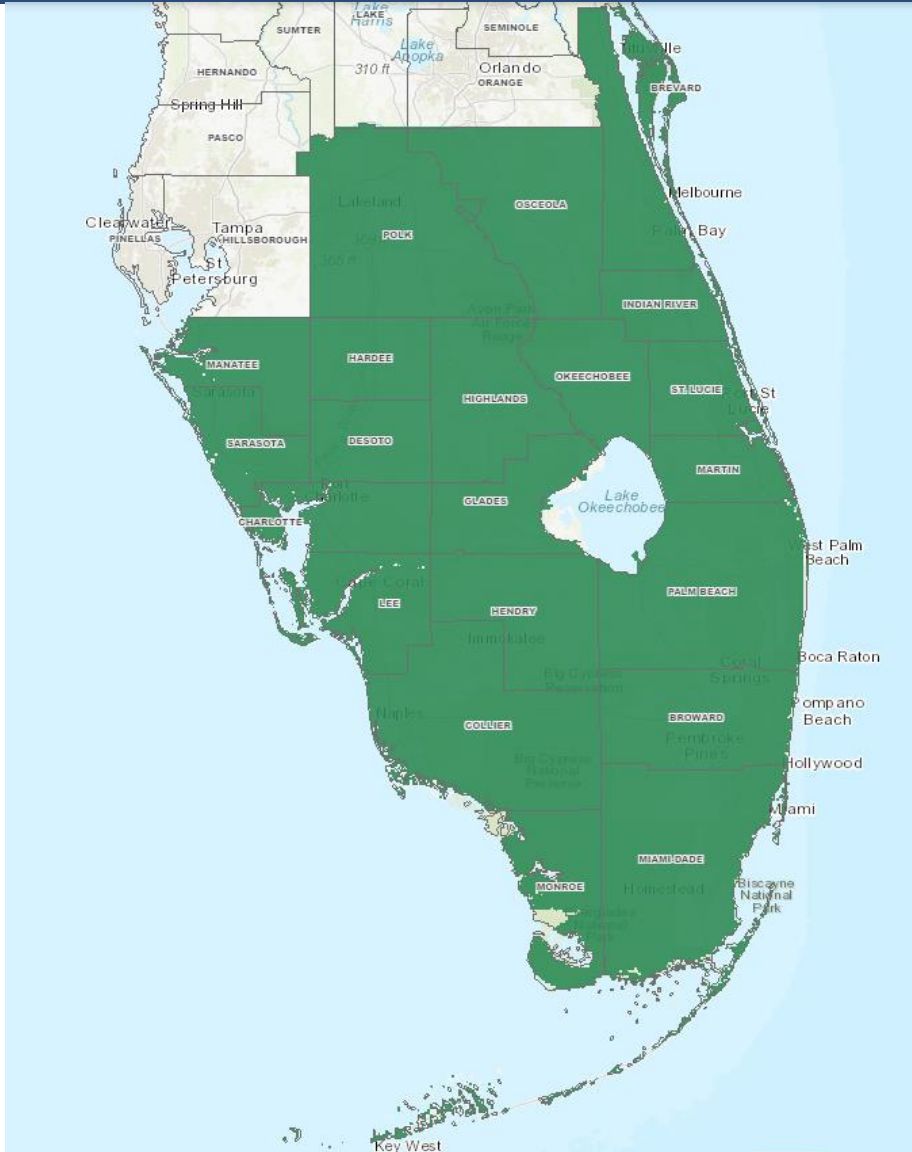


- Moderate to heavy rain will continue to spread across the southern half of the state tonight and continue through Saturday afternoon.
- **A widespread 4-8" is currently being forecast for all of South Florida near and south of SR-70, with localized areas of 12+" possible.**
- A widespread 1-3" of rain is forecast along the I-4 corridor, with pockets of 3-5" rain totals possible closer to SR-60.



Flood Watch

From the National Weather Service



Flood Watch in effect until Saturday Night for Florida Keys, Okeechobee, Indian River, St. Lucie, Martin, Polk, Manatee, Sarasota, Hardee, Highlands, DeSoto, Charlotte, Lee, Osceola, Brevard

Flood Watch in effect until Sunday Morning for Glades, Hendry, Palm Beach, Collier, Broward, Miami-Dade, Mainland Monroe

Potential impacts include:

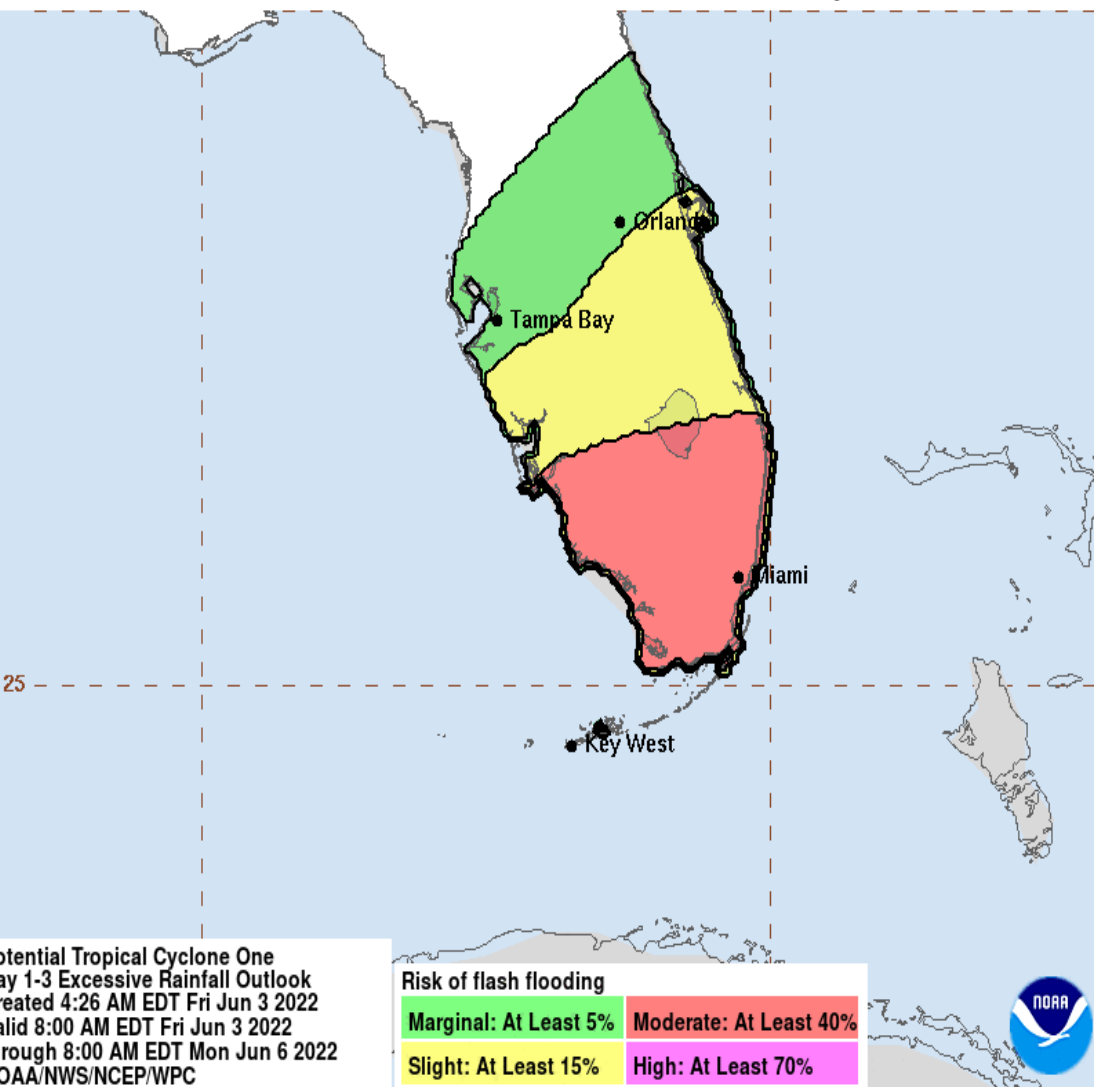
- Street and area flooding with low spots possibly becoming impassable to vehicles.
- Rivers, creeks and streams may rise out of their banks.



Flash Flood Outlooks

From the Weather Prediction Center ([LINK](#))

Greatest Flash Flood Risk Over the Next 3 Days

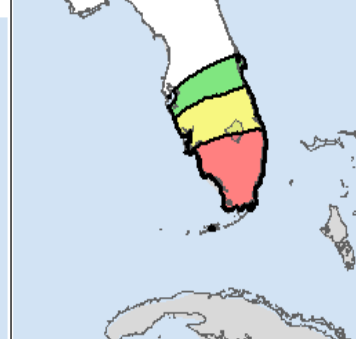


Potential Tropical Cyclone One
Day 1-3 Excessive Rainfall Outlook
Created 4:26 AM EDT Fri Jun 3 2022
Valid 8:00 AM EDT Fri Jun 3 2022
through 8:00 AM EDT Mon Jun 6 2022
NOAA/NWS/NCEP/WPC

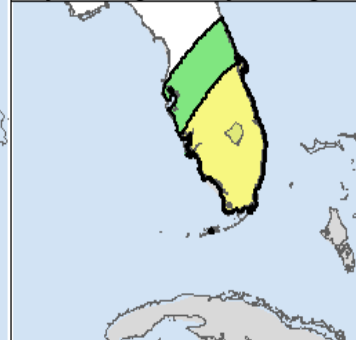
Risk of flash flooding

Marginal: At Least 5%	Moderate: At Least 40%
Slight: At Least 15%	High: At Least 70%

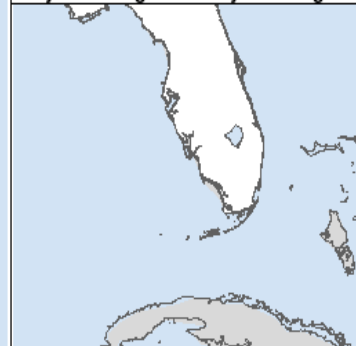
Day 1 Through Saturday morning



Day 2 Through Sunday morning



Day 3 Through Monday morning



Understanding WPC Excessive Rainfall Risk Categories

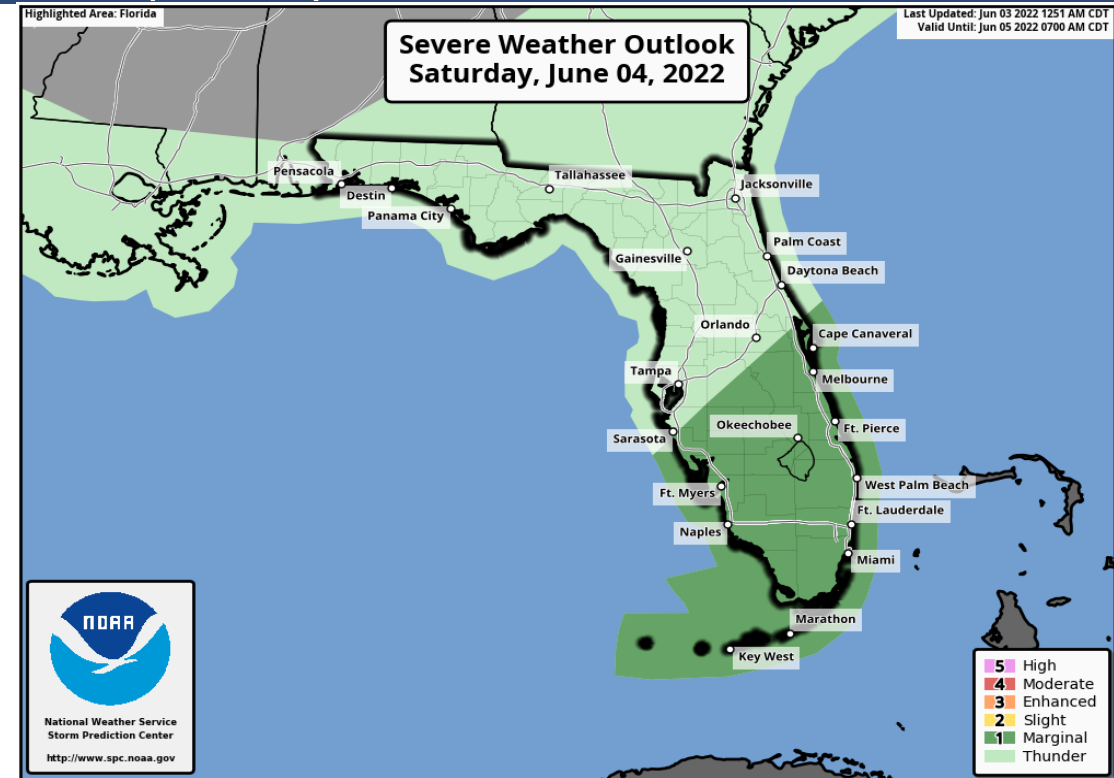
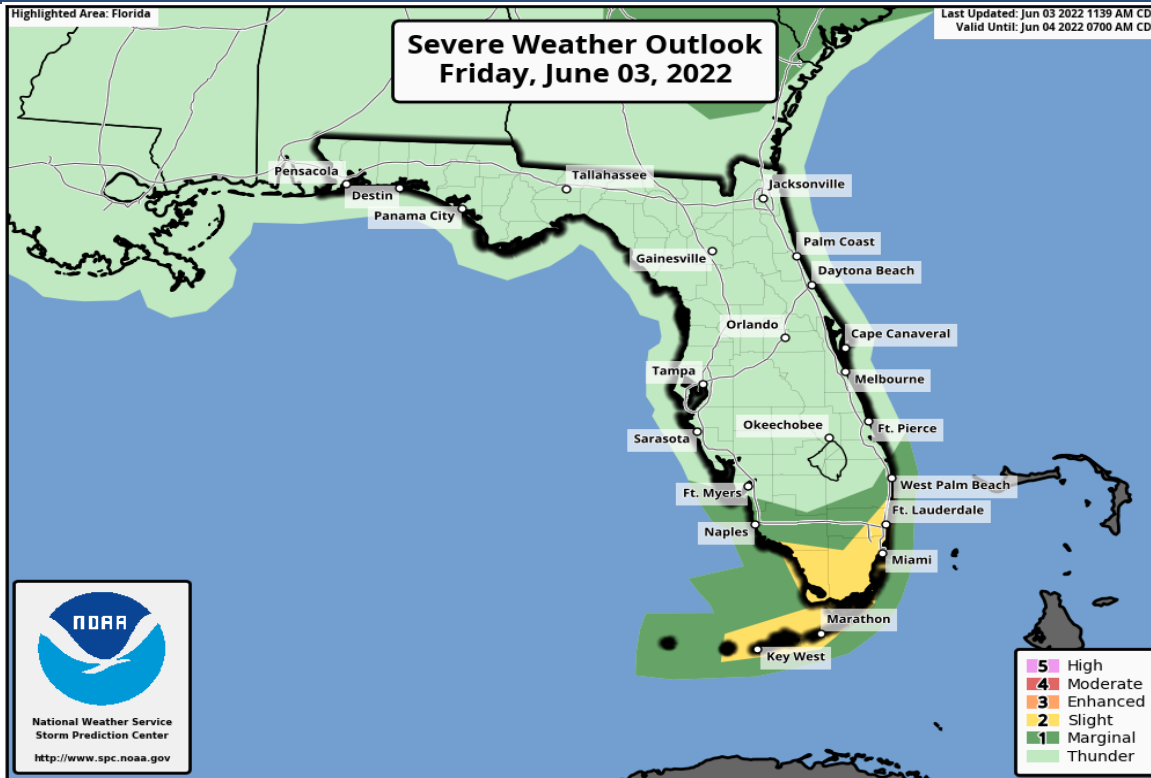
No Area/Label	MARGINAL (MRGL)	SLIGHT (SLGT)	MODERATE (MDT)	HIGH (HIGH)
Flash floods are generally not expected. @NWSWPC	Isolated flash floods possible Localized and primarily affecting places that can experience rapid runoff with heavy rainfall.	Scattered flash floods possible Mainly localized. Most vulnerable are urban areas, roads, small streams and washes. Isolated significant flash floods possible.	Numerous flash floods likely Numerous flash flooding events with significant events possible. Many streams may flood, potentially affecting larger rivers.	Widespread flash floods expected Severe, widespread flash flooding. Areas that don't normally experience flash flooding, could. Lives and property in greater danger.
Flash flooding near me?	Flash Flooding	Flash Flooding	Flash Flooding	Flash Flooding
WEATHER PREDICTION CENTER				

Heavy rainfall could result in **considerable flash flooding** on Friday and Saturday across South Florida and the Florida Keys. Urban areas in Southeast Florida will be most at risk of impactful street flooding.



Severe Weather Outlooks

From the Storm Prediction Center (SPC)



Understanding Severe Thunderstorm Risk Categories

THUNDERSTORMS (no label)	1 - MARGINAL (MRGL)	2 - SLIGHT (SLGT)	3 - ENHANCED (ENH)	4 - MODERATE (MDT)	5 - HIGH (HIGH)
No severe* thunderstorms expected	Isolated severe thunderstorms possible	Scattered severe storms possible	Numerous severe storms possible	Widespread severe storms likely	Widespread severe storms expected
Lightning/flooding threats exist with <u>all</u> thunderstorms	Limited in duration and/or coverage and/or intensity	Short-lived and/or not widespread, isolated intense storms possible	More persistent and/or widespread, a few intense	Long-lived, widespread and intense	Long-lived, very widespread and particularly intense

As PTC One approaches the southern Peninsula tonight, isolated tornadoes cannot be ruled out along the Florida Keys and portions of South Florida. On Saturday morning, isolated tornadoes are also possible across additional portions of Central & South Florida.



Storm Surge Potential

From the National Hurricane Center (NHC)



EXPERIMENTAL Peak Storm Surge Forecast

Up to 3 ft

Feet above ground level

Middle of Longboat Key

1-2 ft

Charlotte
Harbor...1-2 ft

Marco Island

1-3 ft

North Miami Beach

1-2 ft

Card Sound Bridge

Dry Tortugas

1-2 ft

80°W

The water could reach the following heights above ground somewhere in the indicated areas if the peak surge occurs at the time of high tide:

Marco Island to Card Sound Bridge (Florida Bay)...1-3 ft

Middle of Longboat Key to Marco Island...1-2 ft

Charlotte Harbor...1-2 ft

Florida Keys and Dry Tortugas...1-2 ft

Card Sound Bridge to North Miami Beach, including Biscayne Bay...1-2 ft

Potential impacts include:

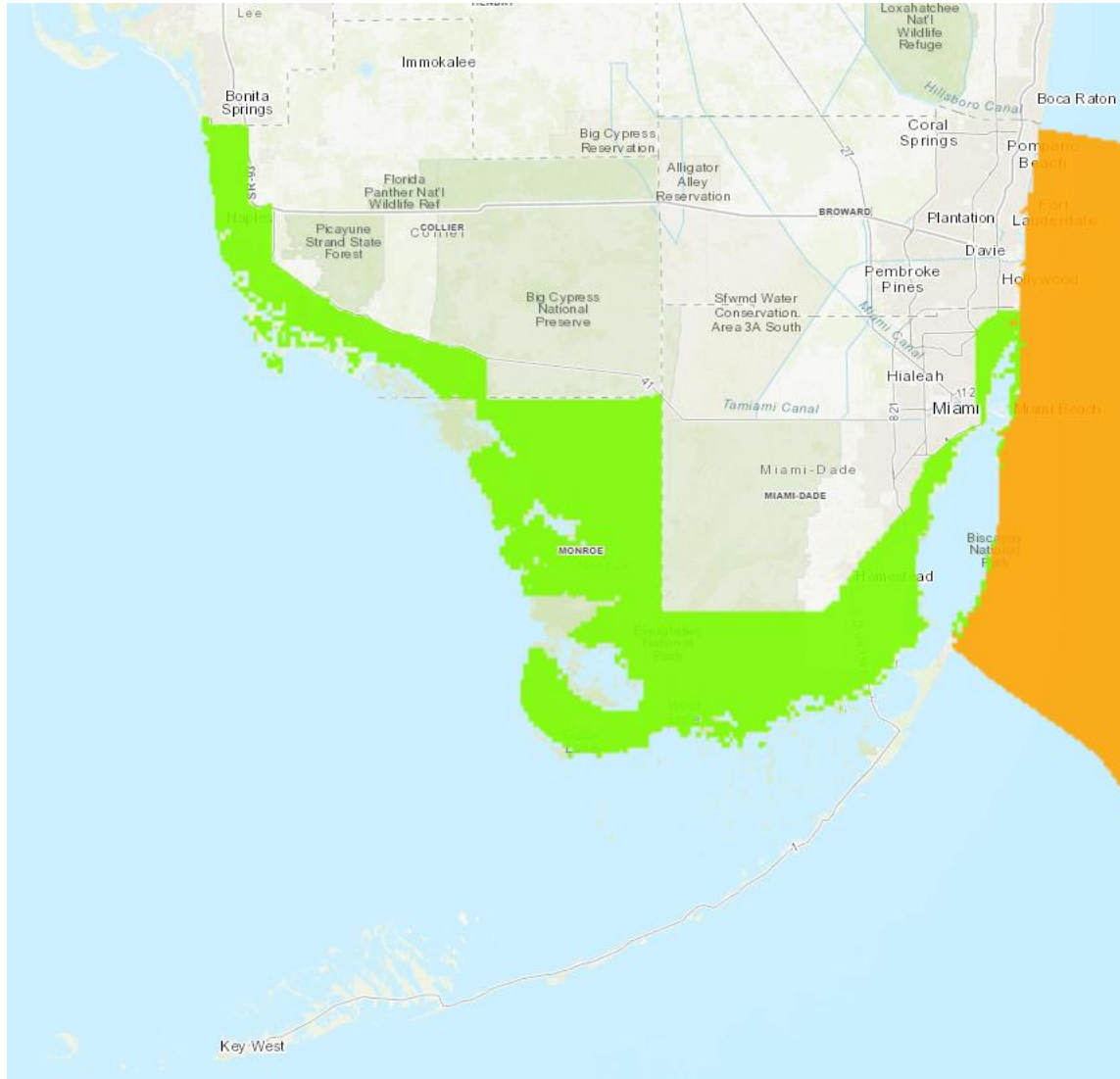
- Localized flooding along immediate shorelines and in low-lying spots.
- Sections of waterfront streets and parking lots may be flooded.
- Moderate beach erosion.
- Minor damage possible to marinas, docks, boardwalks, and piers. A few small craft may break away from moorings.

Potential Tropical Cyclone ONE
Friday June 03, 2022
10 AM CDT Advisory 04
NWS National Hurricane Center

User Notes: Water levels along the immediate coast could reach the following heights above ground level within the indicated areas. Elevated water levels will likely be accompanied by large and destructive waves. Colors are determined by the highest values in the associated forecast peak surge range. Values shown on this graphic are inclusive of tide.



Coastal Flood Advisory



- Coastal Flood Advisory in effect from 2AM TO 11 PM EDT SATURDAY
- Coastal Collier, Coastal Miami-Dade, Mainland Monroe
- High rip current risk through Sunday morning



Key Messages for Potential Tropical Cyclone One

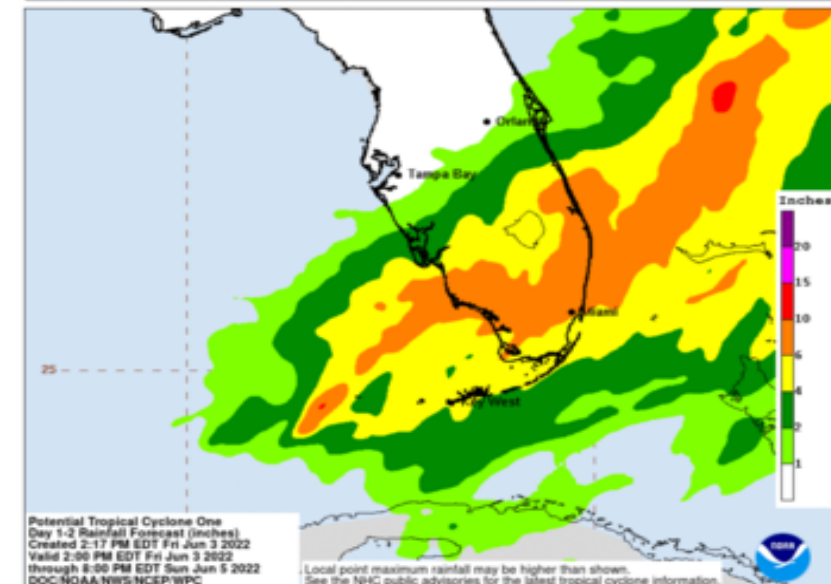
Advisory 5: 4:00 PM CDT Fri Jun 03, 2022



1. Heavy rain associated with the system is expected across western Cuba, where life-threatening flash flooding and mudslides are possible.

2. Heavy rain will affect portions of Central Florida, South Florida, and the Florida Keys today and continue through Saturday. Considerable flash and urban flooding is possible across South Florida and in the Keys. Flash and urban flooding is also possible across the northwestern Bahamas.

3. Tropical storm conditions are expected in the warning area in western Cuba this afternoon and tonight, in Florida tonight and on Saturday, and in the northwestern Bahamas on Saturday. Tropical storm conditions are also possible in the watch area in western Cuba this afternoon and tonight.



For more information go to hurricanes.gov



Overall Summary

Potential Tropical Cyclone One:

- At 5:00 PM EDT, Potential Tropical Cyclone #1 (PTC #1) was located approximately 350 miles southwest of Fort Myers, Florida.
- The system is moving toward the northeast near 7 mph, and a northeastward motion with an increase in forward speed is expected during the next couple of days. On the forecast track, the system should move across the southeastern Gulf of Mexico tonight, across the southern and central portions of the Florida Peninsula on Saturday, and then over the southwestern Atlantic north of the northwestern Bahamas late Saturday through Sunday.
- Maximum sustained winds remain near 40 mph, with higher gusts. PTC #1 is expected to become Tropical Storm Alex tonight, and some slight strengthening is possible while it approaches Florida. Additional strengthening is possible after the system moves east of Florida over the western Atlantic Saturday night and Sunday.
- A Tropical Storm Warning has been issued from Longboat Key (Sarasota/Manatee border) southward along the Florida West Coast, the entire Florida Keys, and along the Florida East Coast south of the Brevard/Volusia County line. Inland Tropical Storm Watches are also in effect for much of Central & South Florida.

Florida Outlook:

- This evening, more intense bands of showers and storms will move onshore and will continue to affect portions of South Florida (mainly south of Lake Okeechobee) overnight.
- By Saturday morning, widespread rain could begin to affect Central Florida areas near and north of Lake Okeechobee and should continue through Saturday evening.
- Although Tropical Storm Warnings are in effect and wind gusts could reach 50-60 mph, heavy rainfall will be the main threat.
- A widespread 4-8" of rain is forecast for South Florida and the Florida Keys Friday and Saturday with locally higher amounts up to 12" possible.
- A Flood Watch is in effect for much of Central and South Florida. Recent above normal rainfall across South Florida may lead to a **quicker onset** of flash flooding.
- Isolated waterspouts/tornadoes are also possible across South Florida tonight, reaching the I-4 corridor Saturday morning.
- Minor coastal flooding around high tide is possible along the Florida Keys and Southwest Florida.

The next briefing packet will be provided Saturday morning. For the latest information on the tropics, please visit the National Hurricane Center website at www.hurricanes.gov.



TROPICAL UPDATE



Created by:

Amy Godsey, Chief State Meteorologist

Amy.Godsey@em.myflorida.com

State Meteorological Support Unit

Florida Division of Emergency Management

Users wishing to subscribe (approval pending) to this distribution list, register at:

https://public.govdelivery.com/accounts/FLDEM/subscriber/new?topic_id=SERT_Met_Tropics.

Other reports available for subscription are available at:

<https://public.govdelivery.com/accounts/FLDEM/subscriber/new?preferences=true>