



TROPICAL UPDATE



10:00 AM EDT

Tuesday, May 31, 2022

Southern Gulf of Mexico Low (60%)

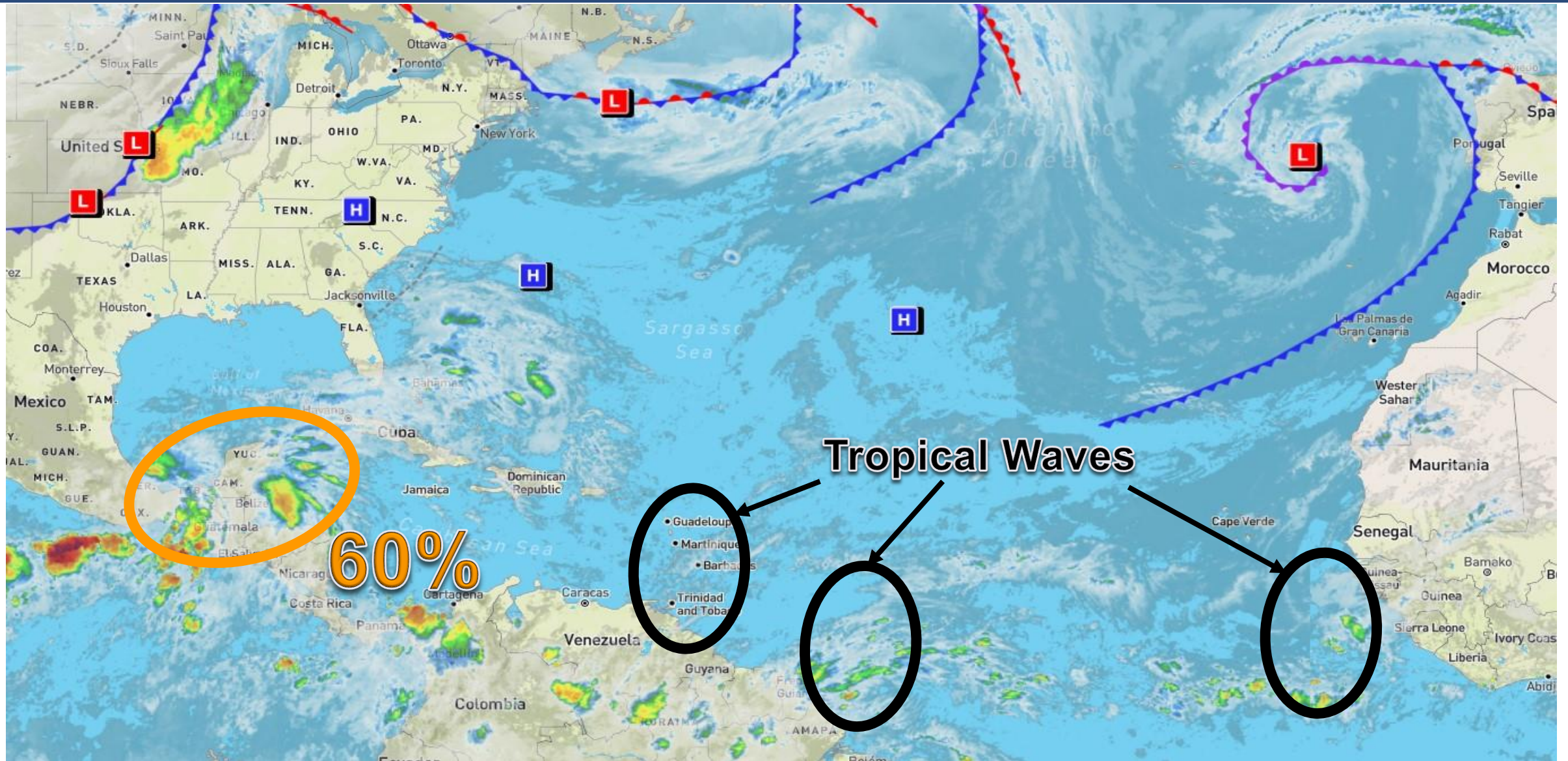
Impacts Possible Late This Week

This update is intended for government and emergency response officials, and is provided for informational and situational awareness purposes only. Forecast conditions are subject to change based on a variety of environmental factors. For additional information, or for any life safety concerns with an active weather event please contact your County Emergency Management or Public Safety Office, local National Weather Service forecast office, or visit the National Hurricane Center website at www.hurricanes.gov.



Atlantic Basin Satellite Image

Chance of development: — None — Low — Medium — High





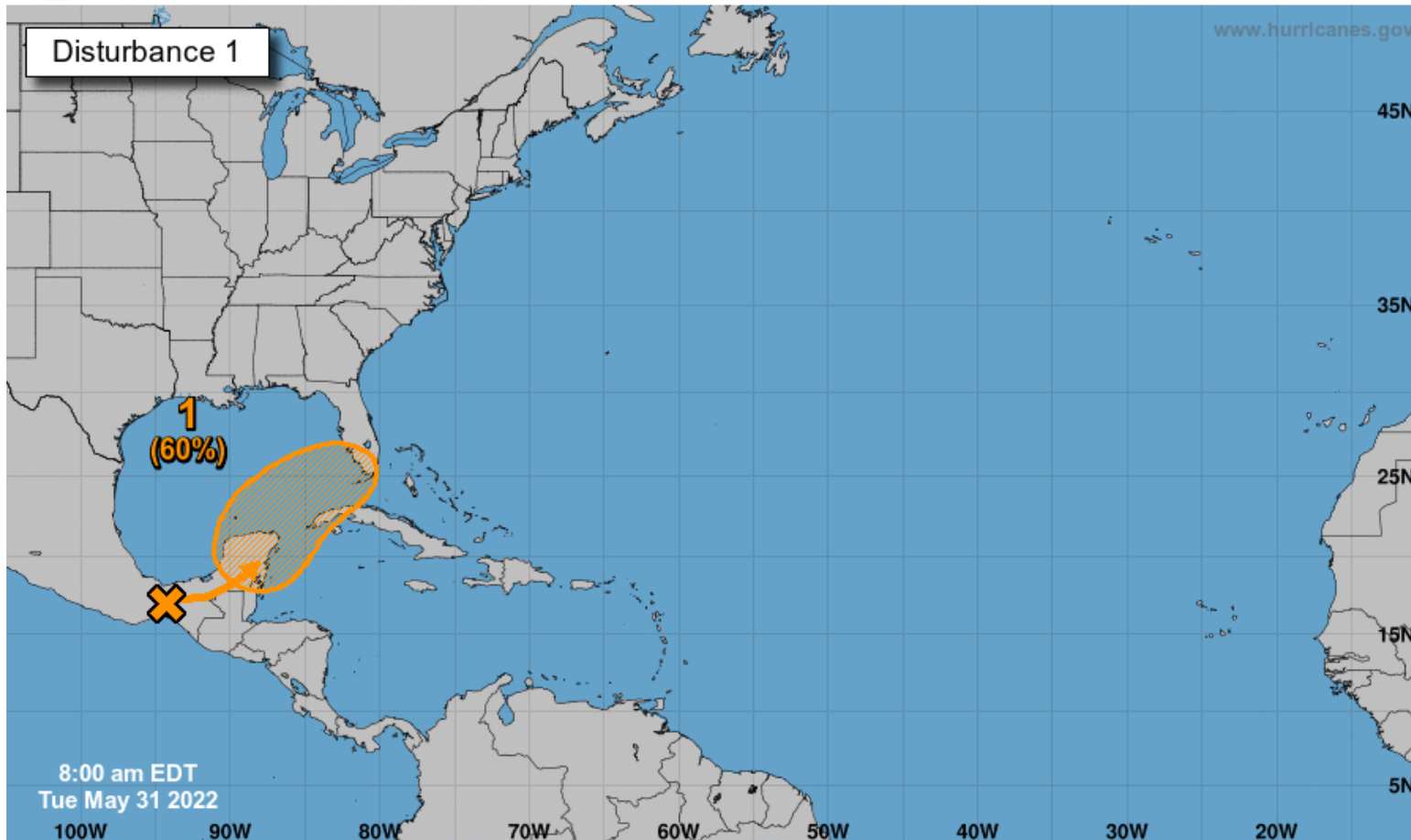
Tropical Weather Outlook

Possible Area of Development During the Next 5 Days ([LINK](#))



Five-Day Graphical Tropical Weather Outlook

National Hurricane Center Miami, Florida



A large and complex area of low pressure is expected to develop near the Yucatan Peninsula and the northwestern Caribbean Sea in a couple of days, partially related to the remnants of Agatha from the eastern Pacific. Despite strong upper-level winds over the area, this system could become a tropical depression while it moves northeastward over the southeastern Gulf of Mexico late this week.

Regardless of development, locally heavy rainfall is possible across southern Florida and the Florida Keys by the end of the week. This system should be monitored throughout the week. The first name on the list is Alex.

***Formation chance through 48 hours...low...10%**

***Formation chance through 5 days...medium...60%**

Current Disturbances and Five-Day Cyclone Formation Chance: < 40% 40-60% > 60%

Tropical or Sub-Tropical Cyclone: Depression Storm Hurricane

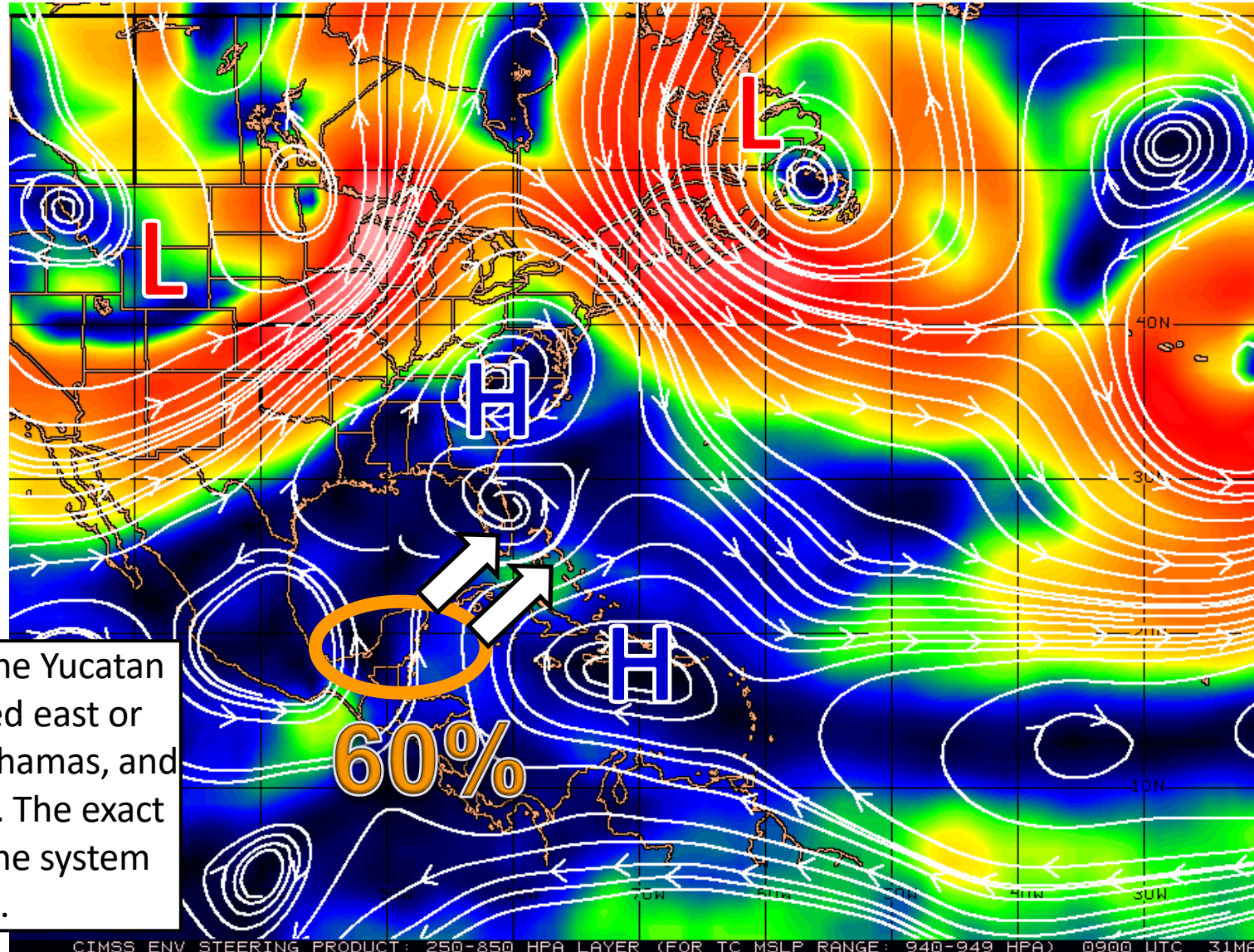
Post-Tropical Cyclone or Remnants



Steering Currents

What is Moving the System?

Color denotes the movement speed through the atmosphere and thin white lines denote direction. Tightly clustered white lines represent faster movement as well.



Fast Moving Storm

Fast Moving Storm

Typical Moving Storm

Slow Moving Storm

60%

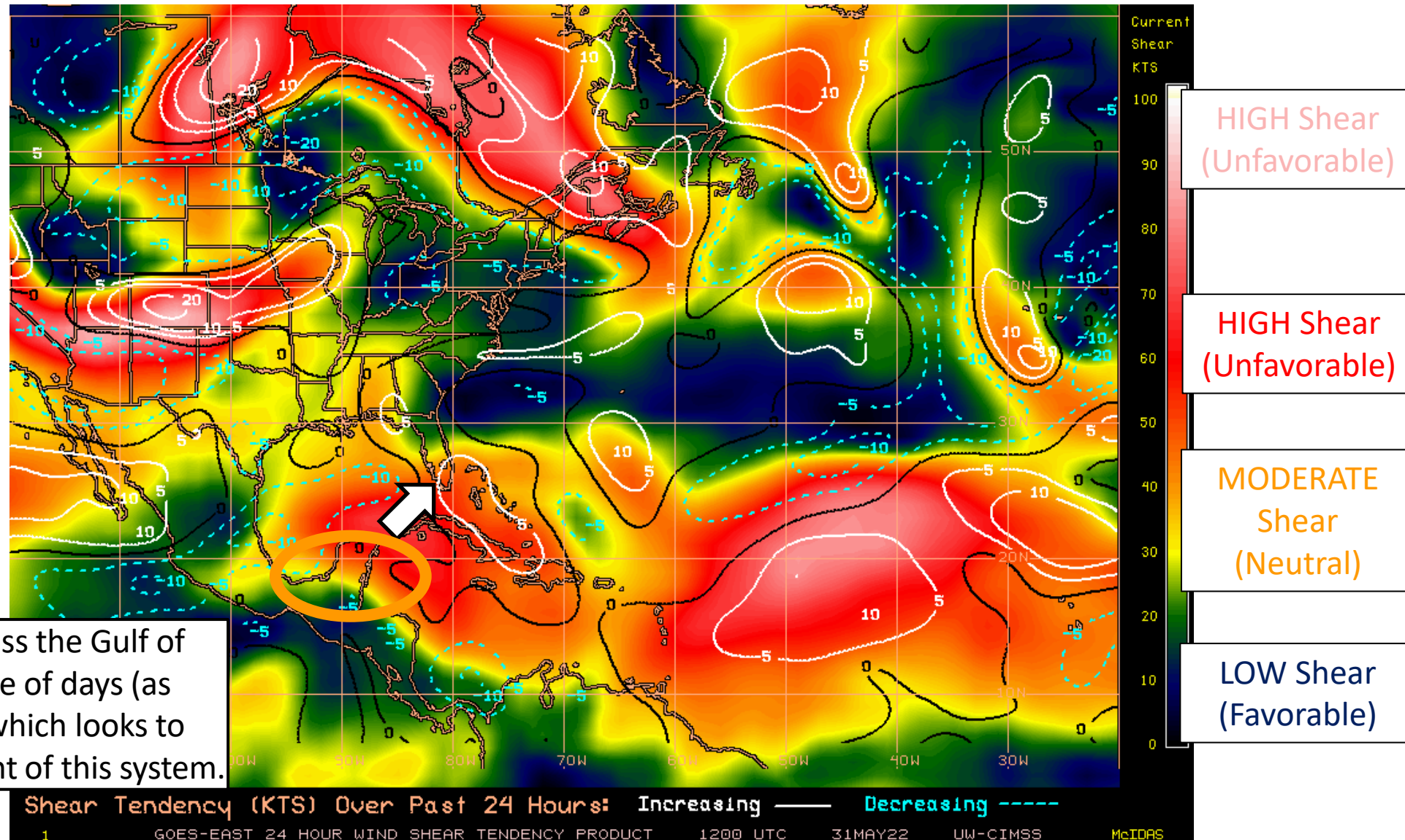
Anything that develops near the Yucatan Peninsula is going to be pulled east or northeast toward Cuba, the Bahamas, and South Florida late in the week. The exact track will depend on where the system specifically develops.



Wind Shear

Is the environment favorable for the system?

Color denotes the amount of wind shear and the lines denote how it have changed over the last 24 hours (dotted lines show decreasing shear and solid lines show increasing).

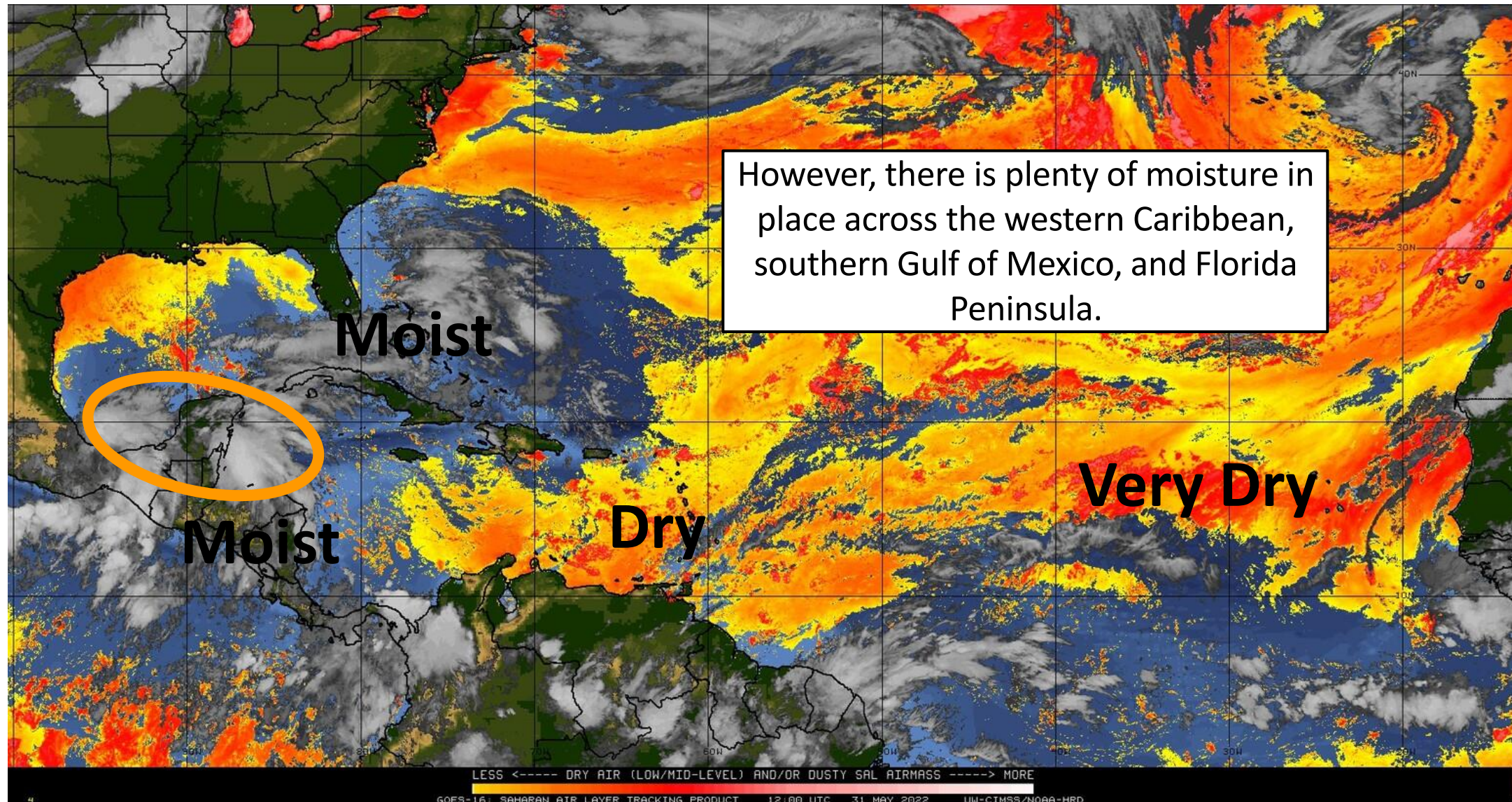




Dry Air & Saharan Dust

Is the environment favorable for the system?

Color denotes concentration of Saharan Dust or dry, stable air.





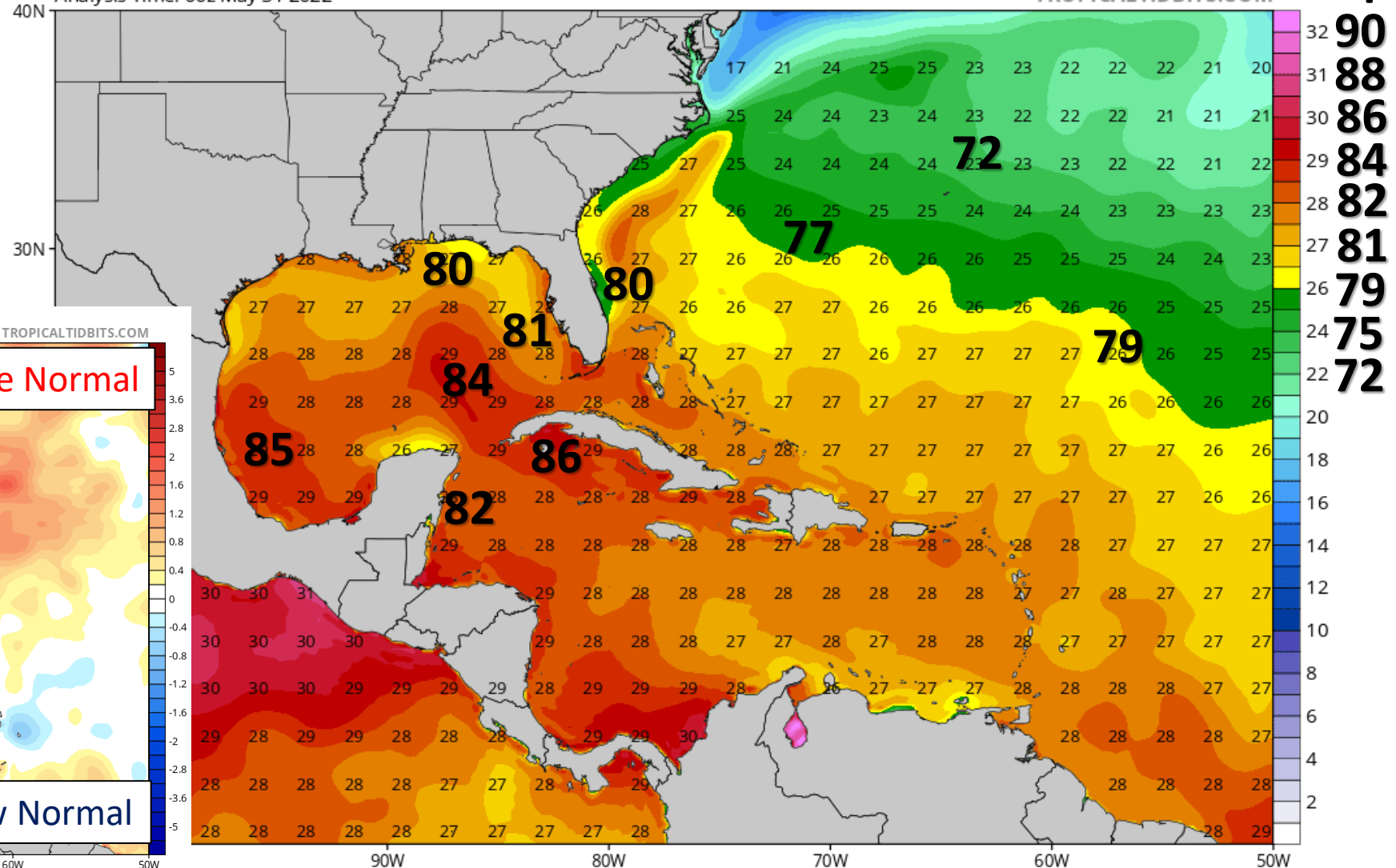
Sea Surface Temperatures & Anomalies

Is the ocean favorable for the system?

In addition, water temperatures are warm enough to support tropical development across the Gulf of Mexico, Caribbean, and western Atlantic. Water temperatures are running a few degrees above normal for this time of year.

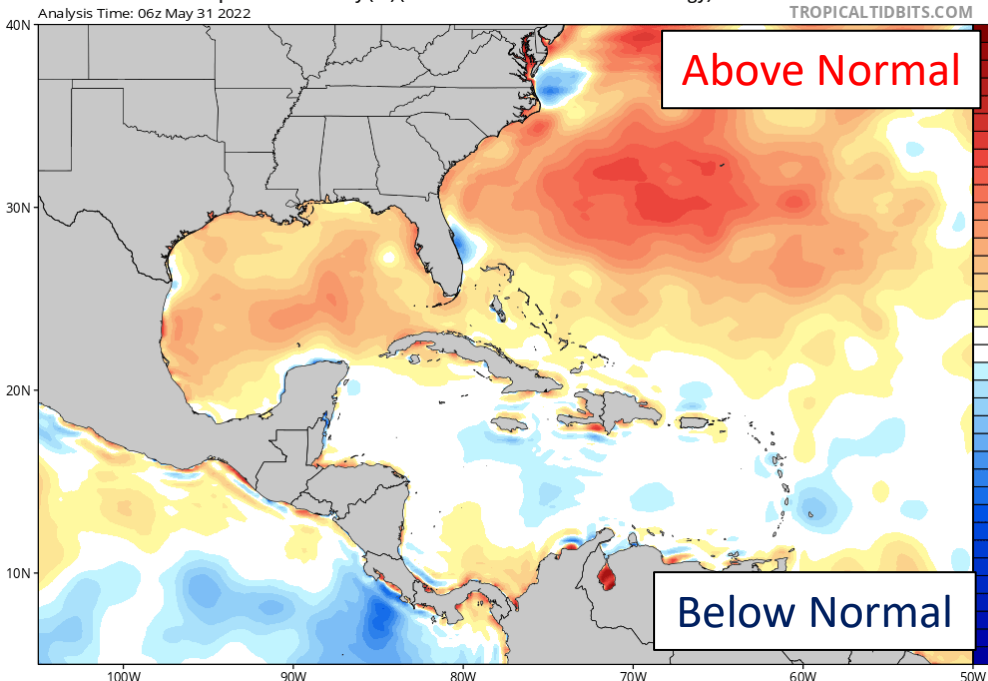
CDAS Sea Surface Temperature (°C)

Analysis Time: 06z May 31 2022



CDAS Sea Surface Temperature Anomaly (°C) (based on CFSR 1981-2010 Climatology)

Analysis Time: 06z May 31 2022





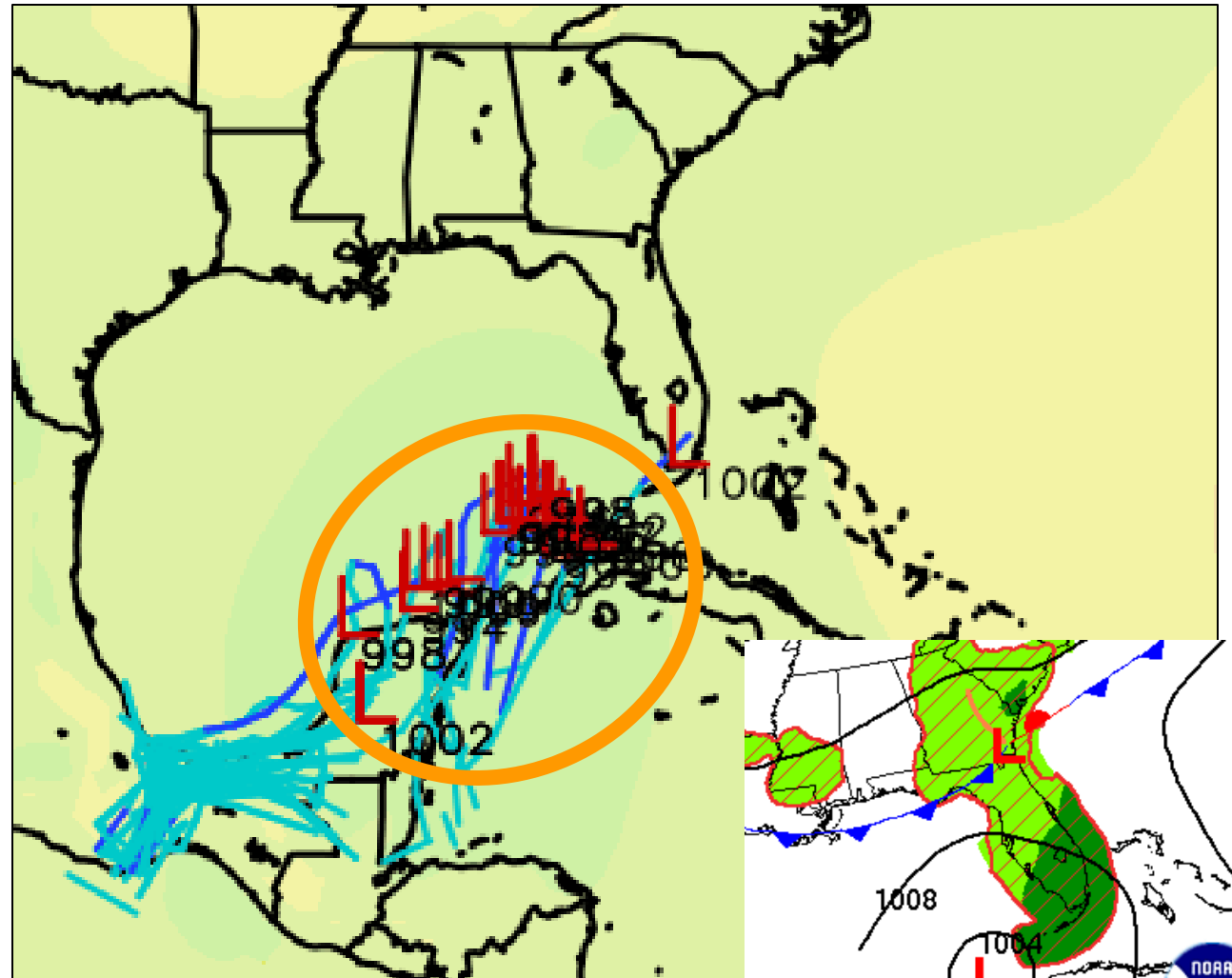
Model Forecasts - Friday

Area of Potential Low Pressure Development

An area of low pressure will be developing near the Yucatan Peninsula near Wednesday or Thursday.

The system will begin to move east or northeast by the end of the week making its closest approach to South Florida on Friday and Saturday.

Notable impacts to Florida are NOT expected through Thursday afternoon.





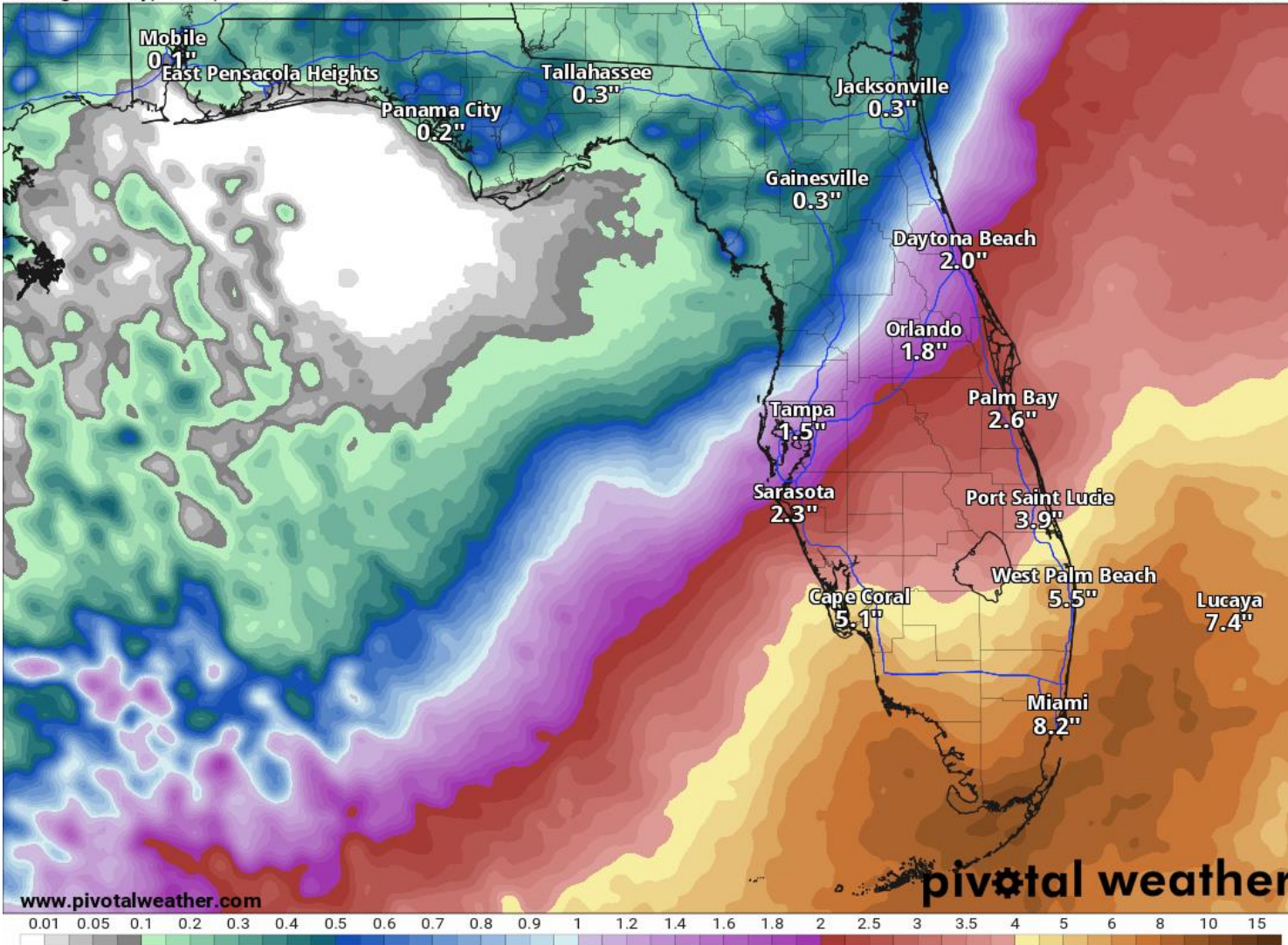
Rainfall Totals Next 7 Days

Ending 8 AM ET Tuesday

7-Day Precipitation (in)

Ending Tuesday, Jun. 7, 2022 at 8 a.m. EDT

Init: Tue 2022-05-31 12z WPC



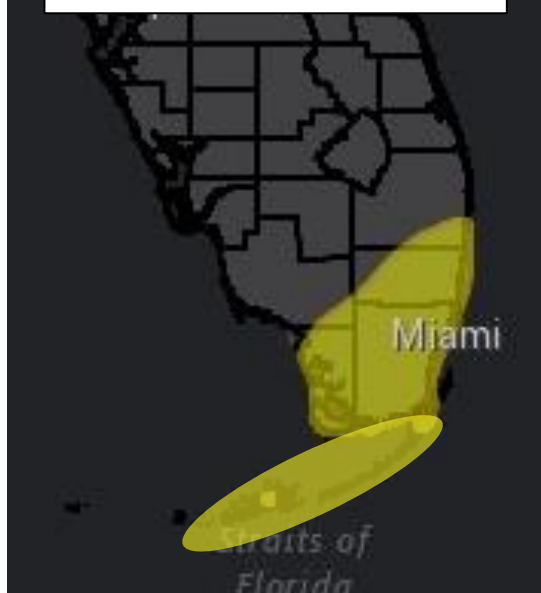
- **Through Thursday night**, a widespread 1-3" of rain is forecast across South Florida and along the West Coast, with more isolated totals in North Florida.
- Localized areas could see 4-5" over the next few days, *but the flood threat will be localized and confined to urban areas.*
- Heavier rainfall is possible in South Florida Friday and Saturday depending on the exact track of the developing low near the Yucatan Peninsula.
- A widespread 4-8" is currently being forecast for this weekend, with localized areas of 12+".
- *These rainfall totals could increase or decrease depending on the exact track!!*



Flash Flood Outlooks Fri./Sat.

From the Weather Prediction Center ([LINK](#))

Friday/Friday Night



Saturday/Saturday Night



Heavy rainfall late in the week could result in flash flooding on Friday and Saturday across South Florida and the Florida Keys. Urban areas in Southeast Florida will be most at risk of impactful street flooding.

Understanding WPC Excessive Rainfall Risk Categories

No Area/Label	MARGINAL (MRGL)	SLIGHT (SLGT)	MODERATE (MDT)	HIGH (HIGH)
Flash floods are generally not expected.	Isolated flash floods possible	Scattered flash floods possible	Numerous flash floods likely	Widespread flash floods expected
@NWSWPC	Localized and primarily affecting places that can experience rapid runoff with heavy rainfall.	Mainly localized. Most vulnerable are urban areas, roads, small streams and washes. Isolated significant flash floods possible.	Numerous flash flooding events with significant events possible. Many streams may flood, potentially affecting larger rivers.	Severe, widespread flash flooding. Areas that don't normally experience flash flooding, could. Lives and property in greater danger.
Flash flooding near me?	Flash Flooding			
	NO Flash Flooding			
NOAA WEATHER PREDICTION CENTER				

Risk of rainfall exceeding flash flood guidance within 25 miles of a point to the right of a line

HIGH: > 50%

SLGT: 10%-20%

MDT: 20%-50%

MRGL: 5%-10%



Overall Summary

Southern Gulf of Mexico Low

- An area of low pressure is expected to develop near the Yucatan Peninsula over the next few days.
- By Friday and Saturday, the area of low pressure is likely to move east or northeast toward Cuba, the Bahamas, and South Florida/Keys.
- The environment over the Gulf of Mexico may allow some development of the area of low pressure into a tropical depression or storm, but a significant wind event is not anticipated. Heavy rain will be the main threat.
- The National Hurricane Center has a 10% (low) chance of development in the next 48 hours, but a **60% (medium) chance** of development over the next 5 days.

Florida Outlook:

- Impacts to Florida, if any, are not expected through Thursday night.
- While it is too early to determine the specifics of any impacts, if they do occur, heavy rainfall is likely to be the main threat, with gusty winds and waterspouts/tornadoes possible as an additional threat.
- The first name on the list for the 2022 season is Alex.
- Unrelated to the tropics, rain chances will remain high across the Florida Peninsula through mid-week. Heavy rainfall with localized flooding in urban areas and a few severe thunderstorms are possible again this afternoon.

The next briefing packet will be provided Wednesday morning. For the latest information on the tropics, please visit the National Hurricane Center website at www.hurricanes.gov.



TROPICAL UPDATE



Created by:

Michael Spagnolo, Deputy State Meteorologist

Michael.Spagnolo@em.myflorida.com

State Meteorological Support Unit

Florida Division of Emergency Management

Users wishing to subscribe (approval pending) to this distribution list, register at:

https://public.govdelivery.com/accounts/FLDEM/subscriber/new?topic_id=SERT_Met_Tropics.

Other reports available for subscription are available at:

<https://public.govdelivery.com/accounts/FLDEM/subscriber/new?preferences=true>