



TROPICAL UPDATE

11 AM EDT

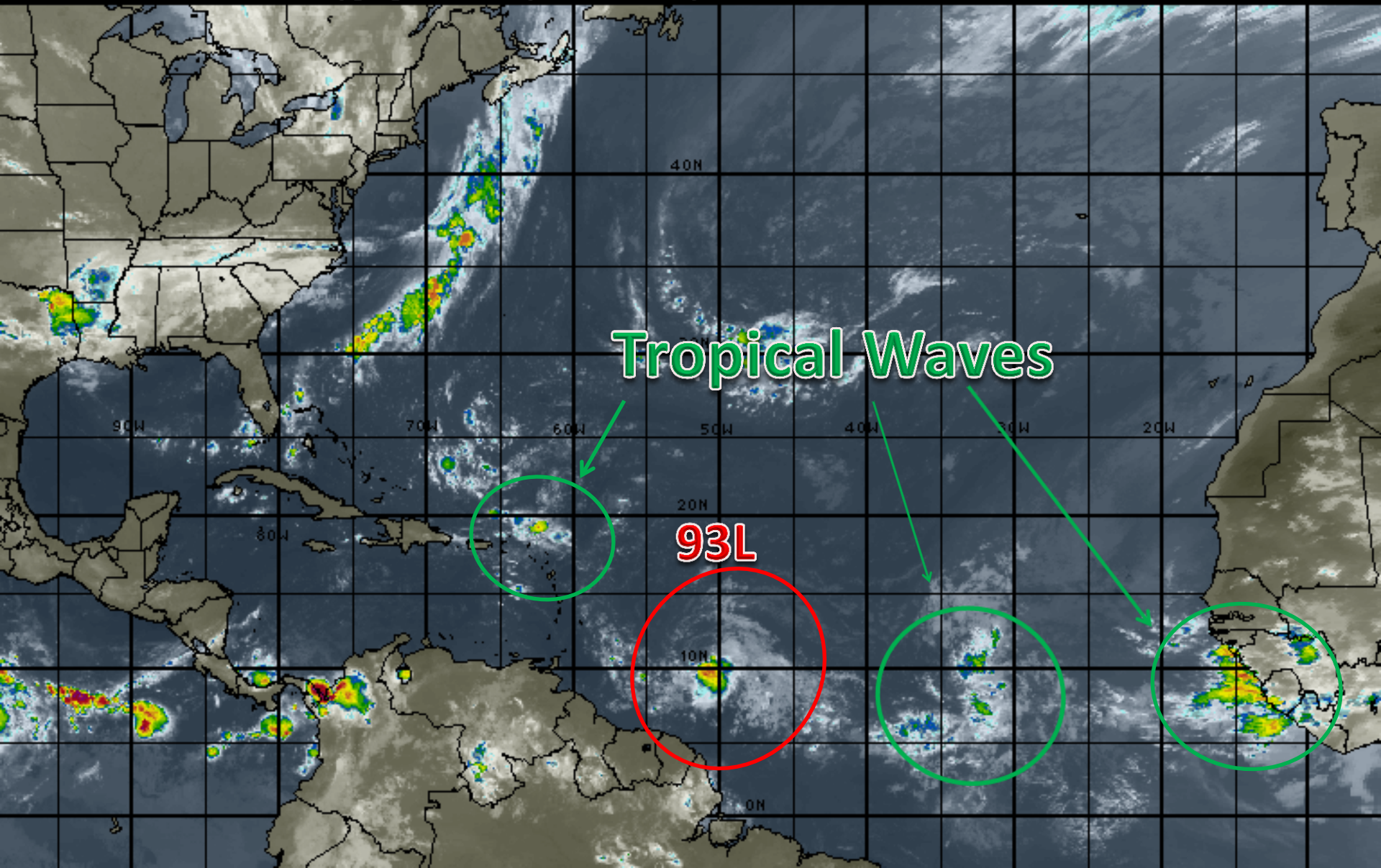
Thursday, July 31, 2014

Invest 93L (70%)

This update is intended for government and emergency response officials, and is provided for informational and situational awareness purposes only. Forecast conditions are subject to change based on a variety of environmental factors. For additional information, or for any life safety concerns with an active weather event please contact your County Emergency Management or Public Safety Office, local National Weather Service forecast office or visit the National Hurricane Center website at www.nhc.noaa.gov.

Atlantic Basin Satellite Image

12:00 31-JUL-2014 GMT ©Copyright WSI Corporation <http://www.wsi.com>



Invest 93L

8 AM Thu Jul 31 2014

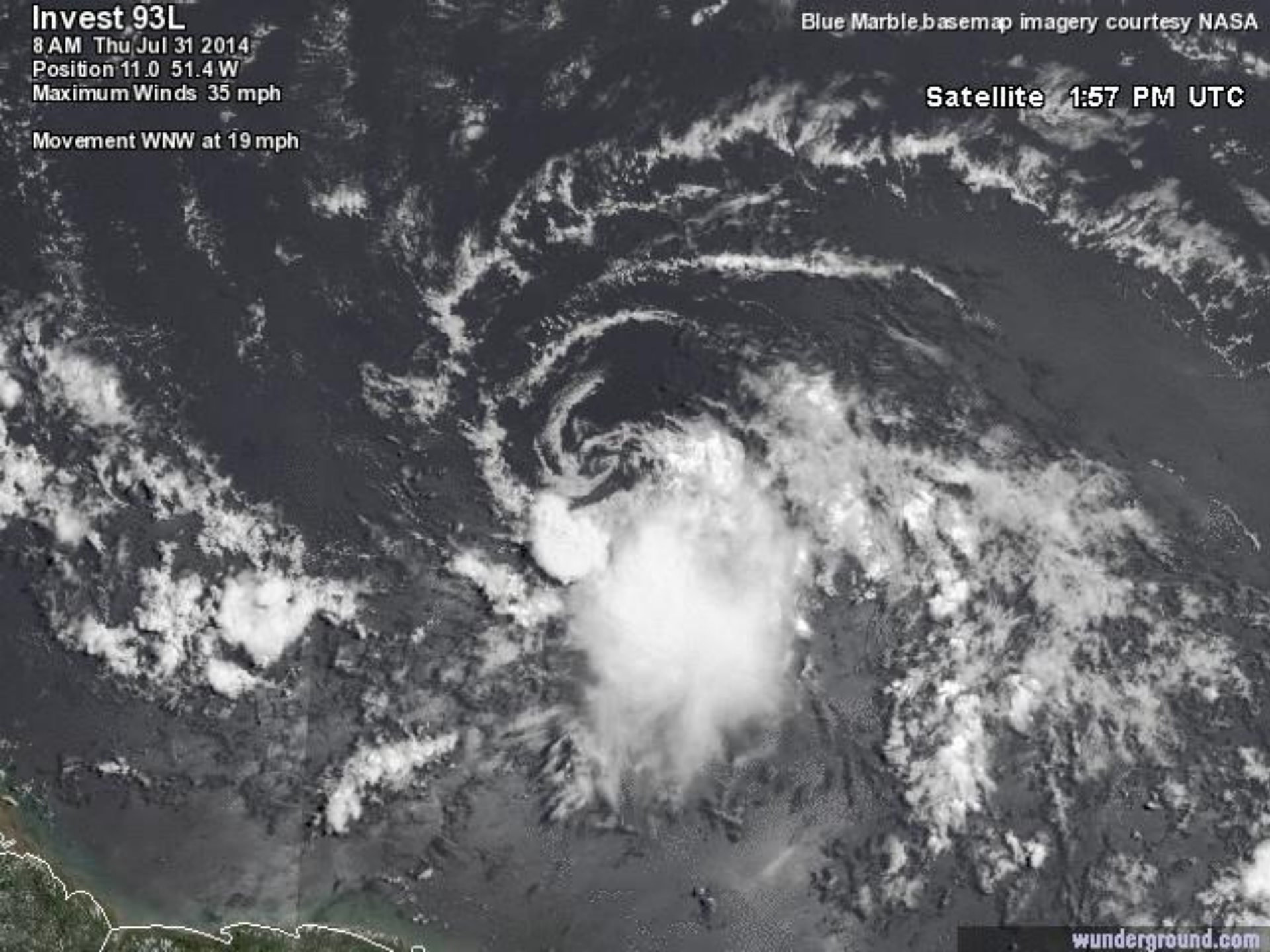
Position 11.0 51.4W

Maximum Winds 35 mph

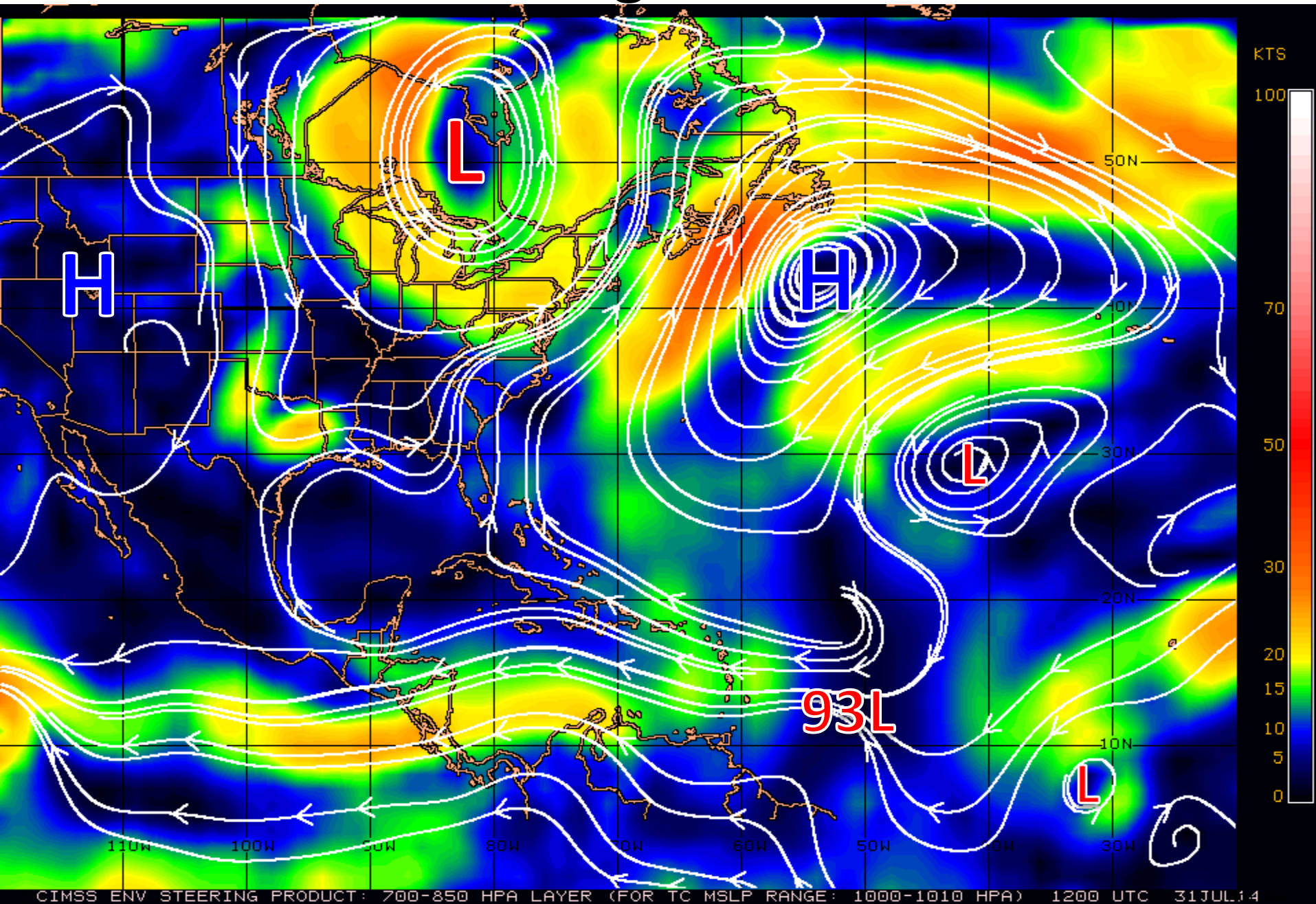
Movement WNW at 19 mph

Blue Marble basemap imagery courtesy NASA

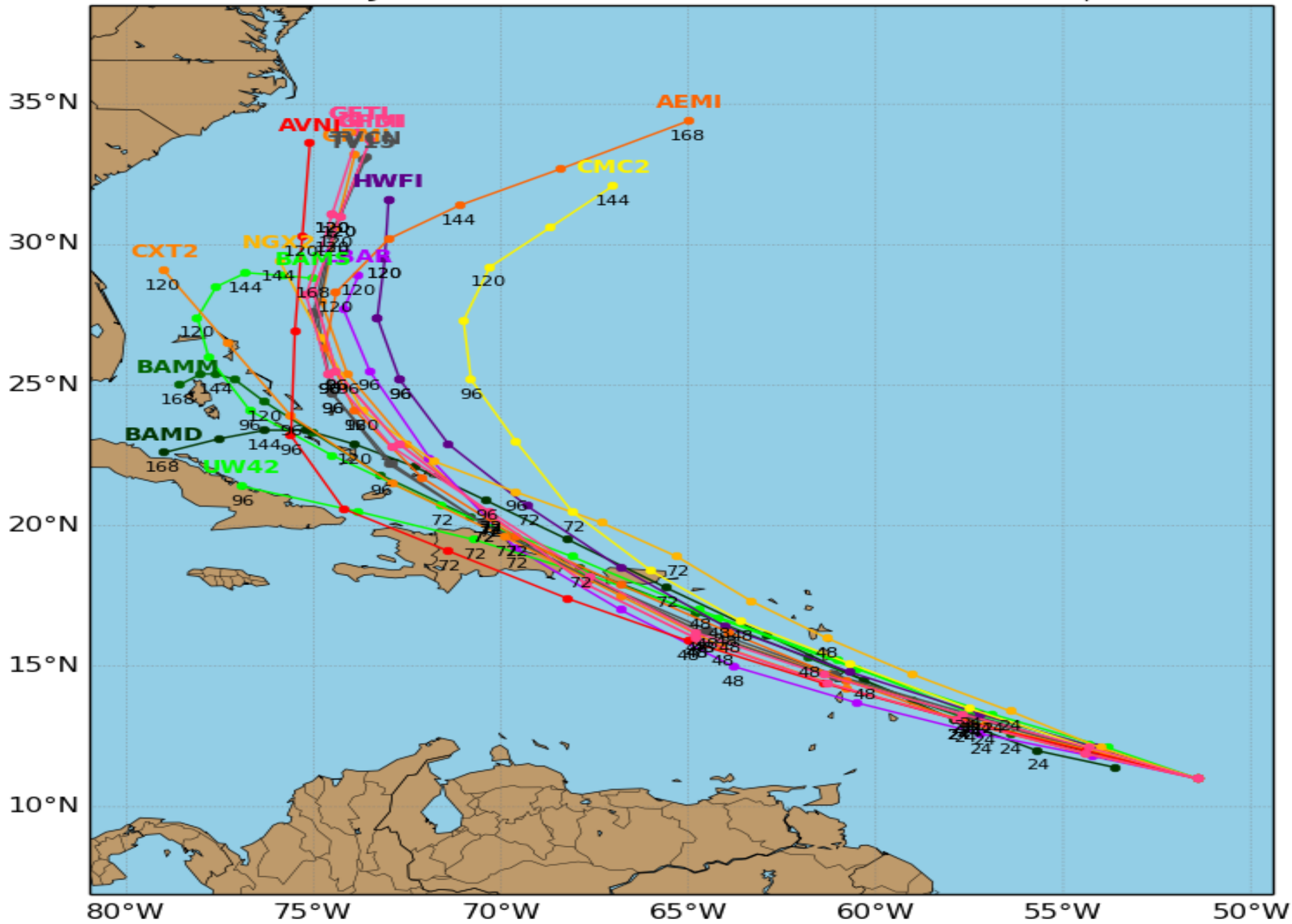
Satellite 1:57 PM UTC



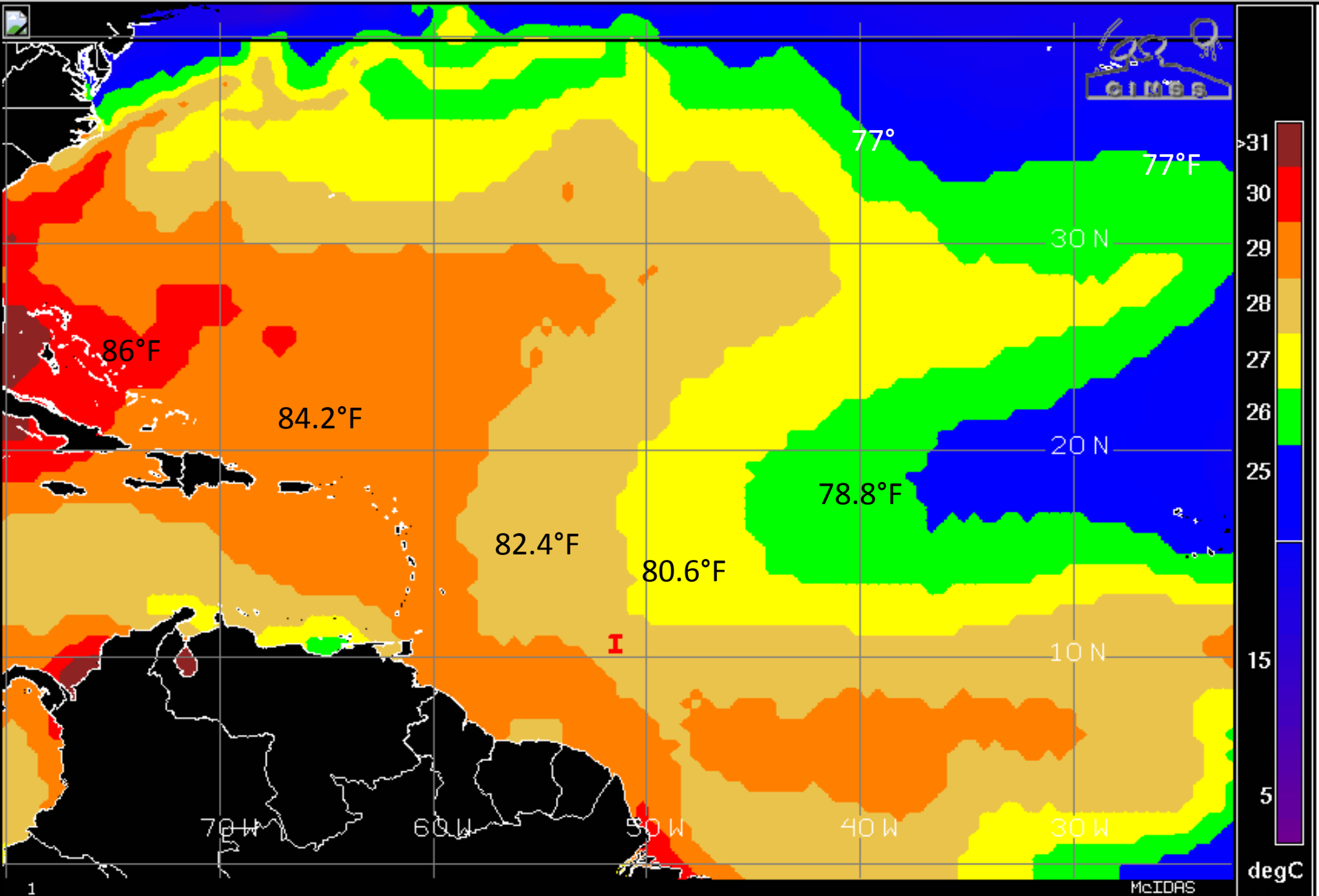
Steering Currents



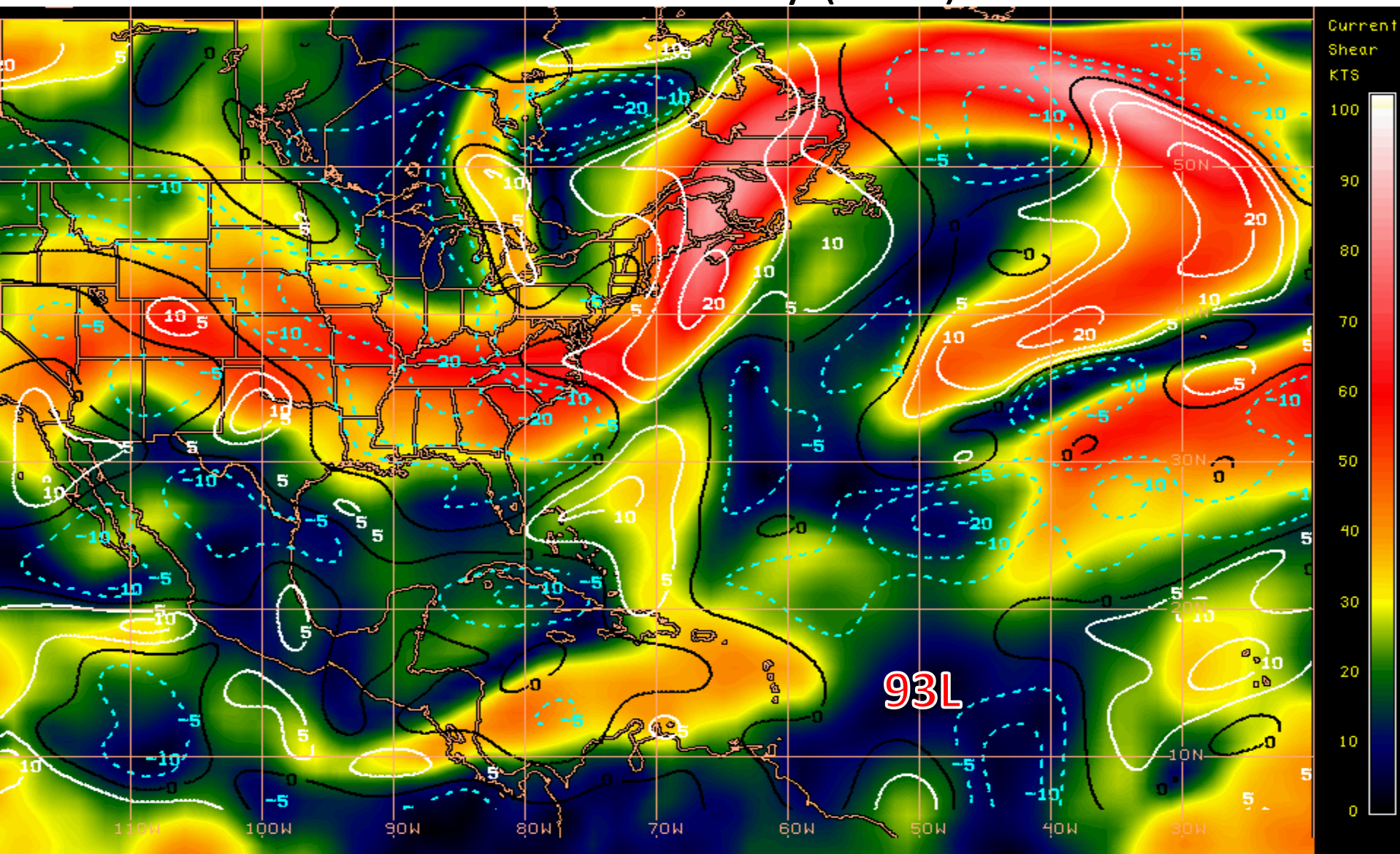
Levi Cowan - tropicaltidbits.com



Sea Surface Temperatures Near 93L



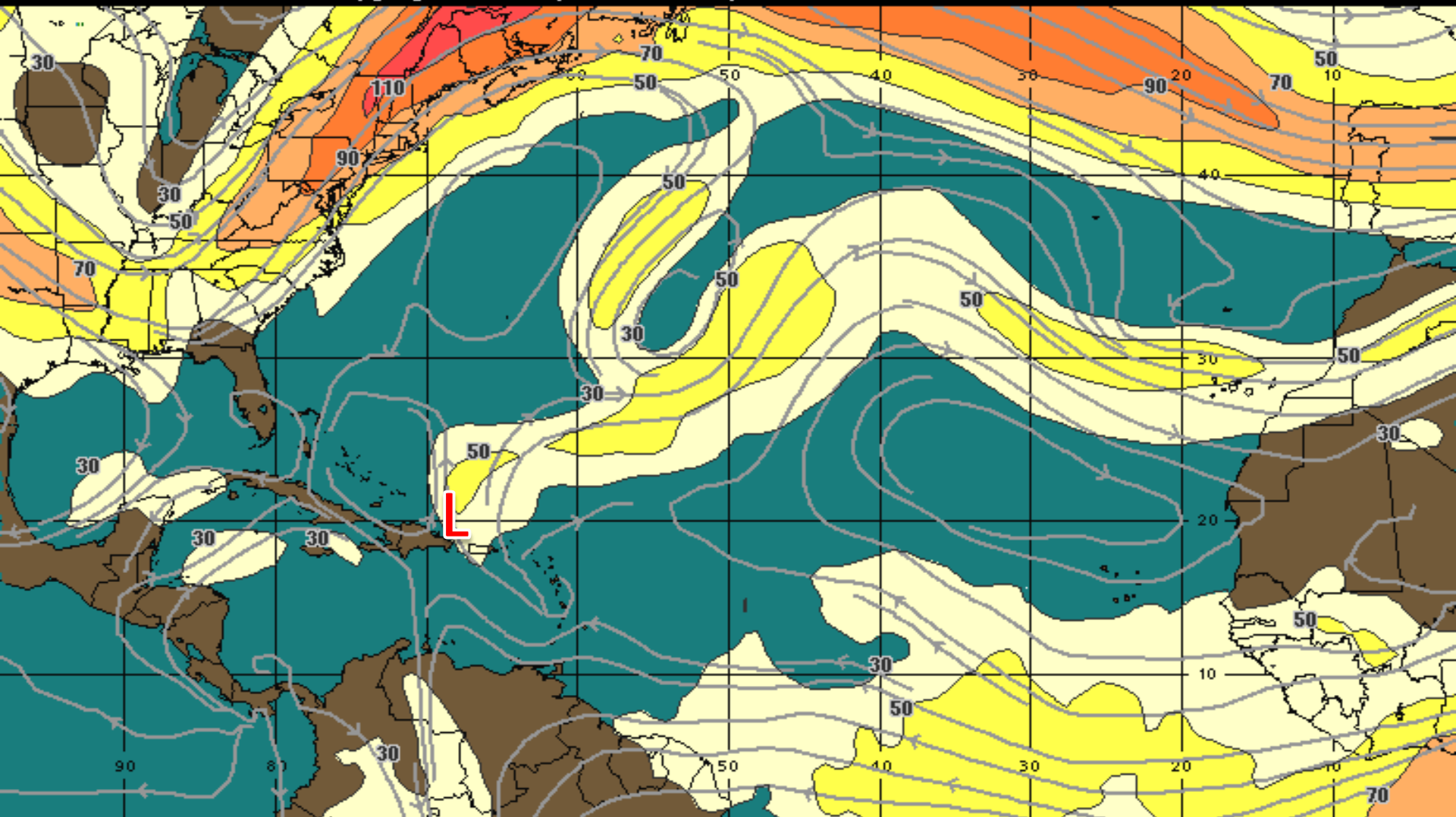
Current Wind Shear (shaded) and Shear Tendency (lines)



Shear Tendency (KTS) Over Past 24 Hours: Increasing ——— Decreasing - - - -

Forecast Upper Level Winds – 72 hours (Thursday)

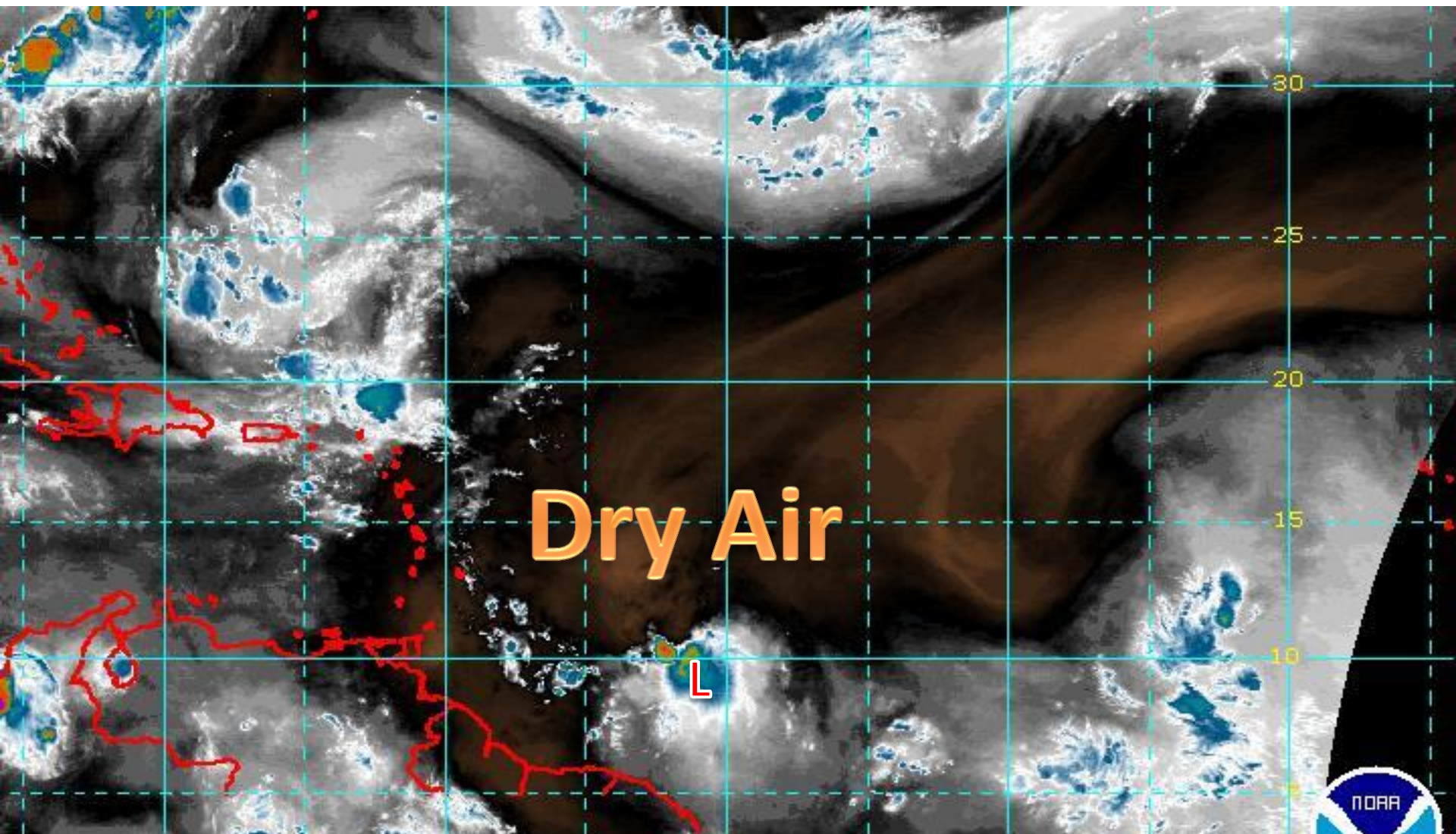
00:00 03-AUG-2014 GMT ©Copyright WSI Corporation <http://www.wsi.com>



200Mb Wind Speed / Streamline Forecast
Valid 0000 UTC Sun 03-Aug-14



Current Atlantic Water Vapor Image



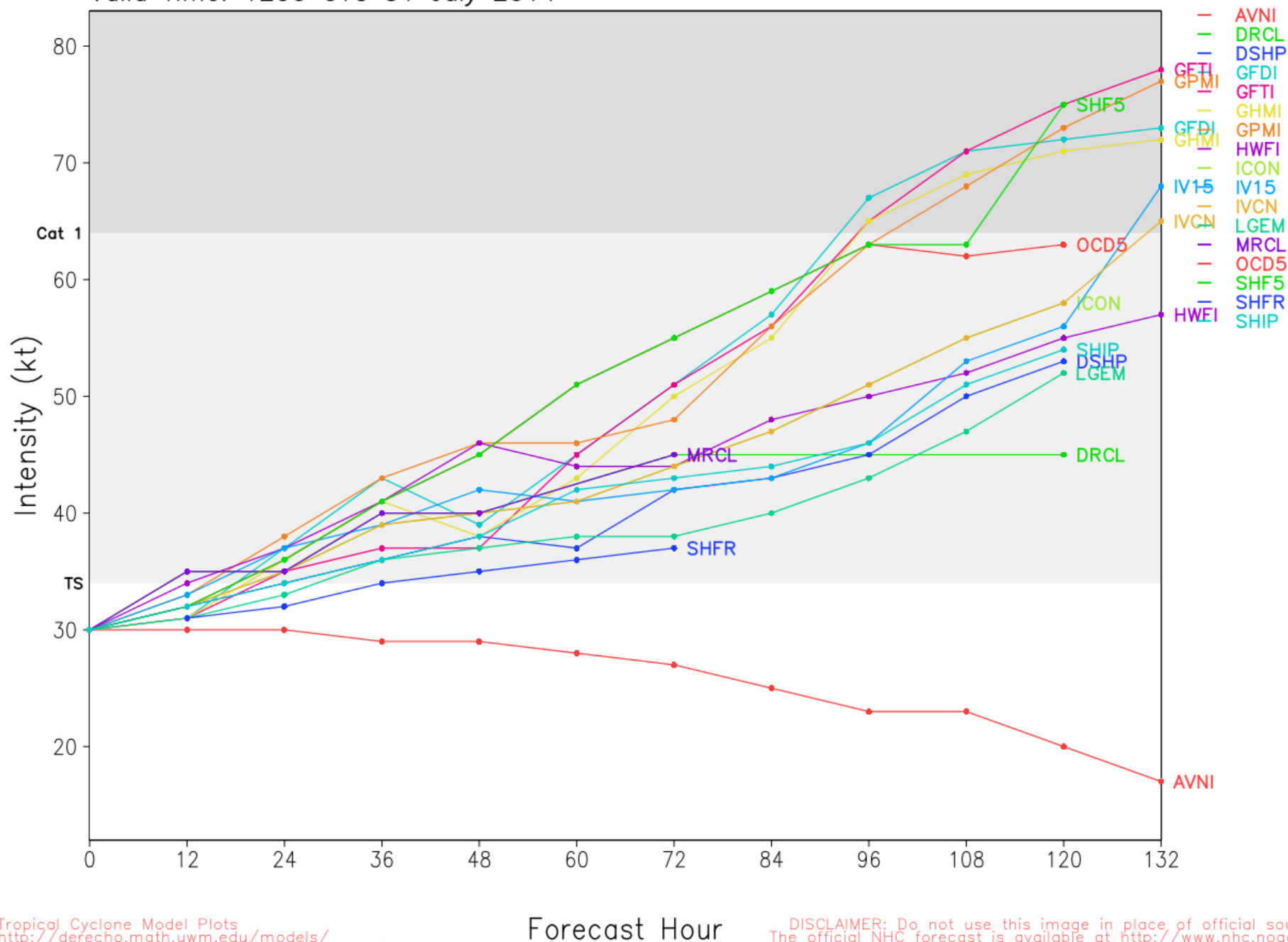
Dry

Saturated

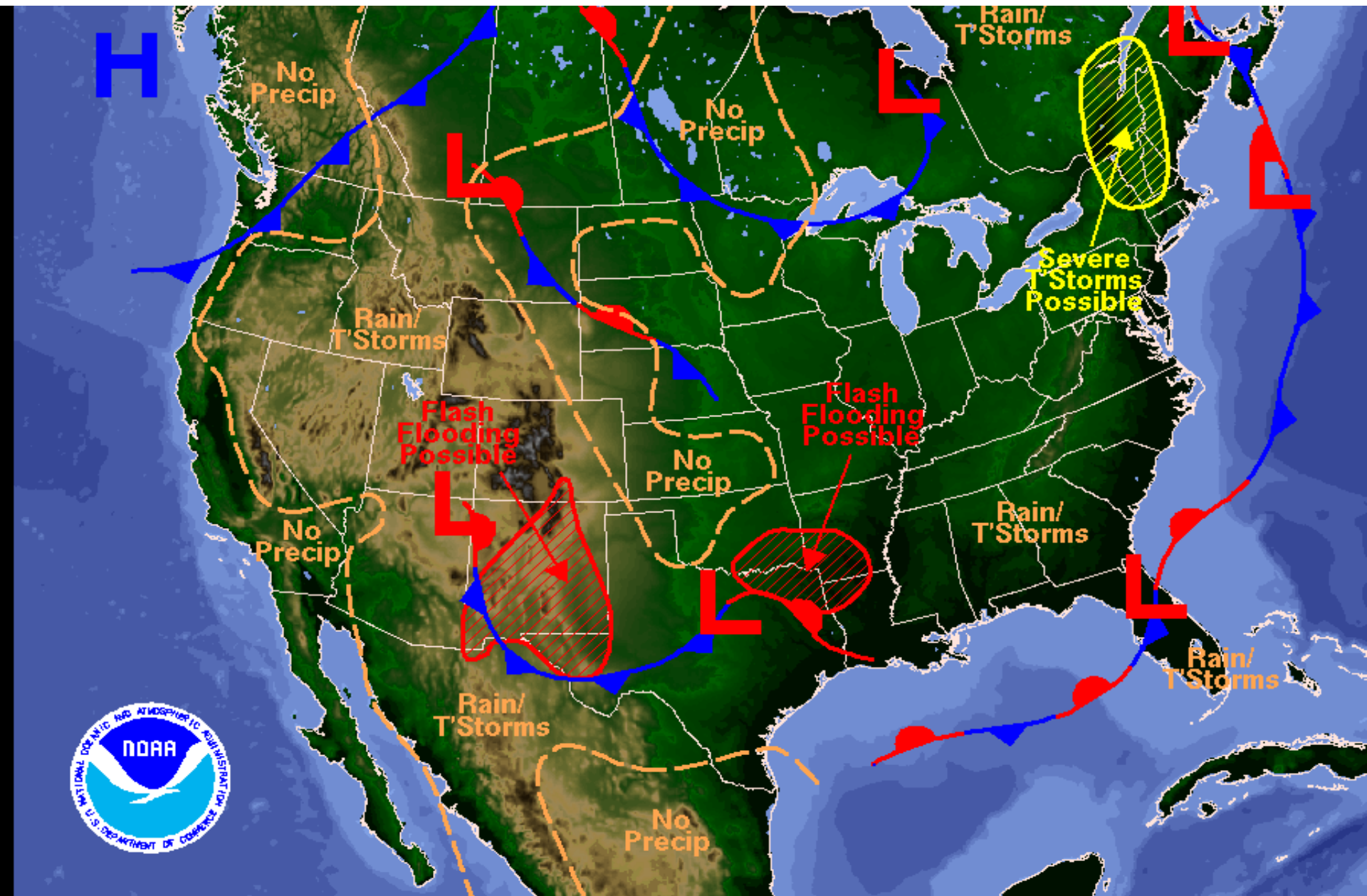


Atlantic Invest 93 Model Intensities

Valid Time: 1200 UTC 31 July 2014

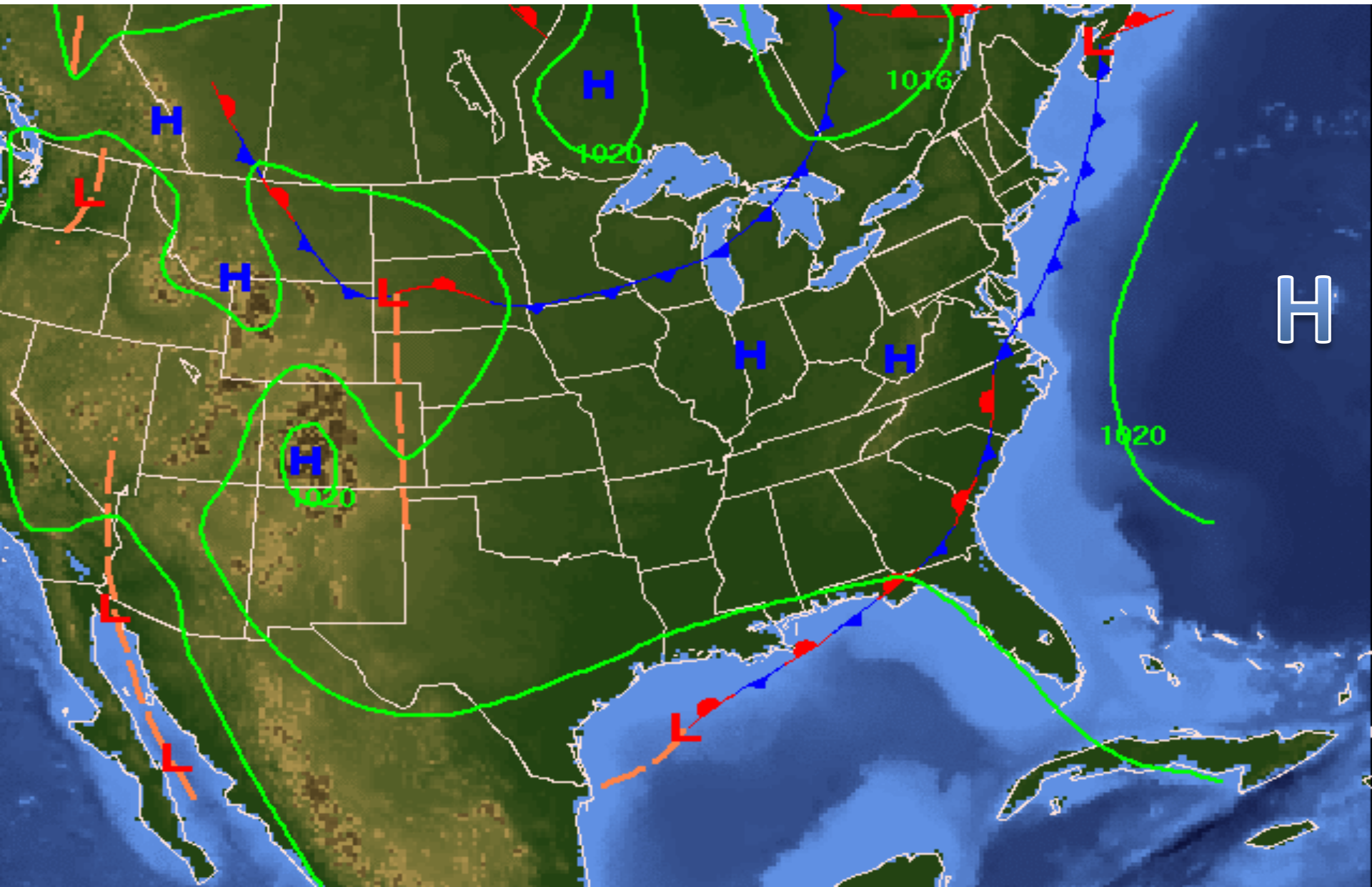


Thursday (7/31) Weather Map

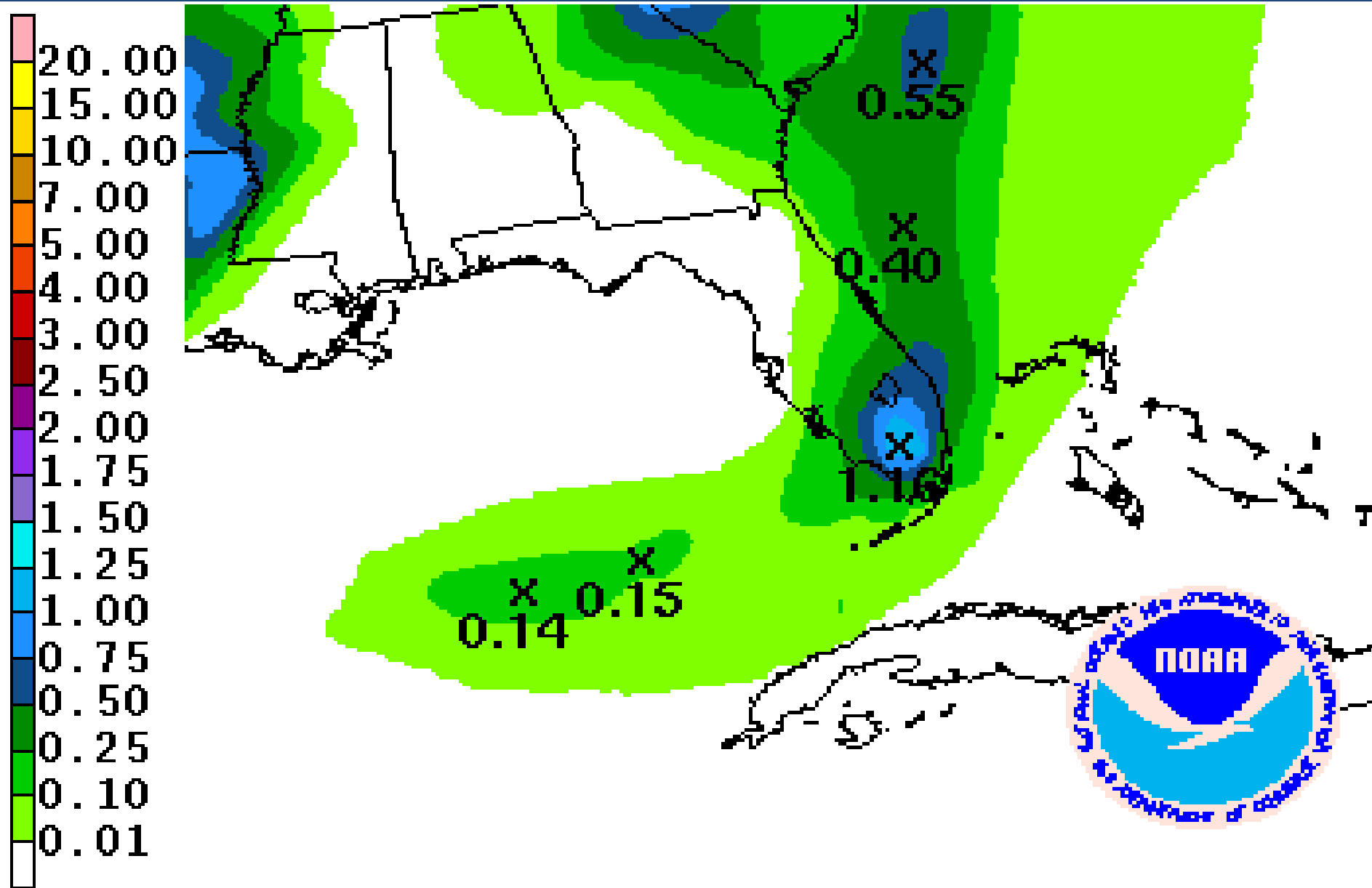


Weather Forecast for Thu, Jul 31, 2014, issued 6:47 AM EDT

Tuesday (8/4) Forecast Weather Map



Forecast Total Rainfall Accumulations (Monday Through Wednesday)





TROPICAL UPDATE

Created by:

Amy Godsey, State Meteorologist
amy.godsey@em.myflorida.com

Bianca Hernandez, Meteorologist
Bianca.hernandez@em.myflorida.com

State Meteorological Support Unit

Florida Division of Emergency Management