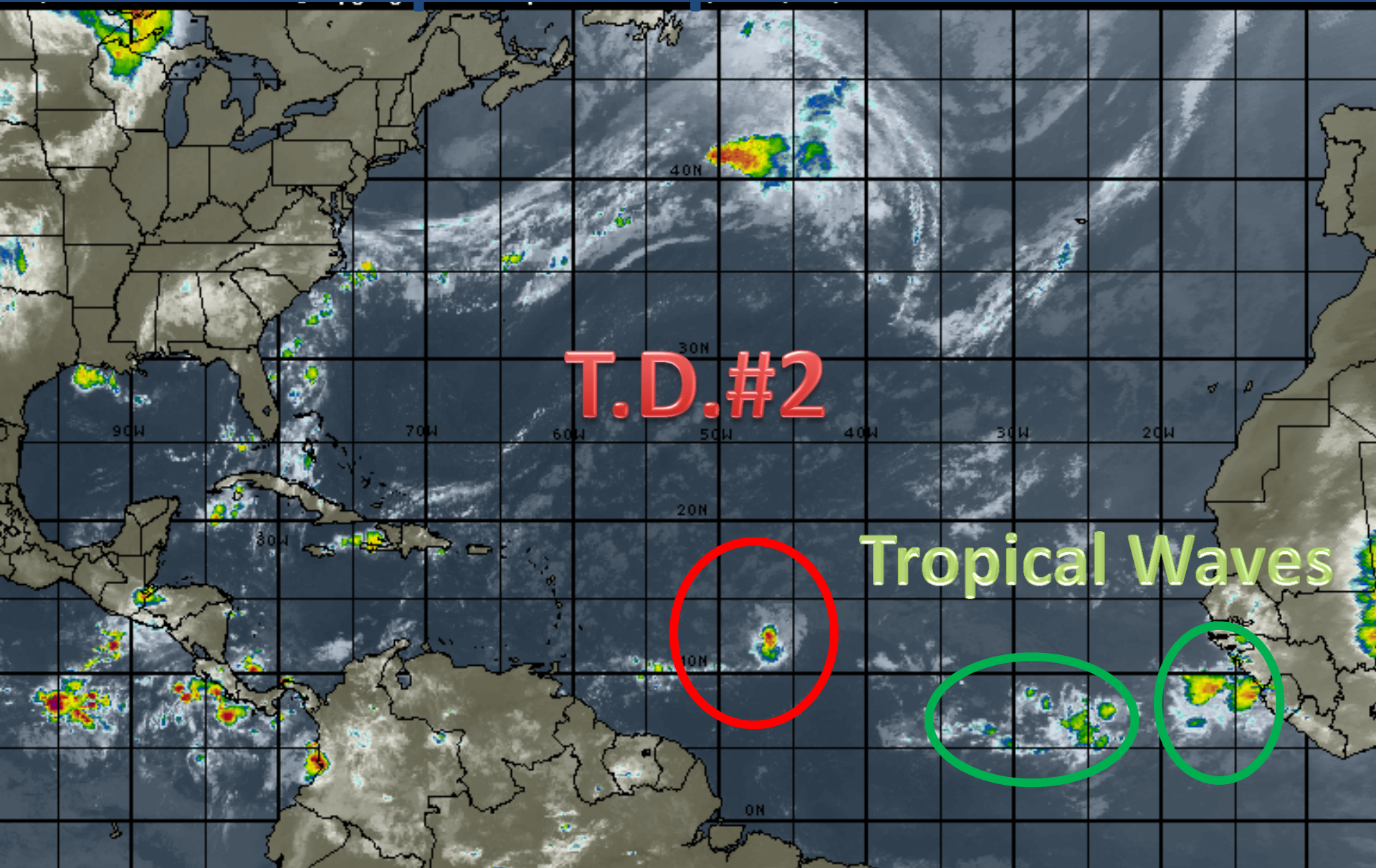
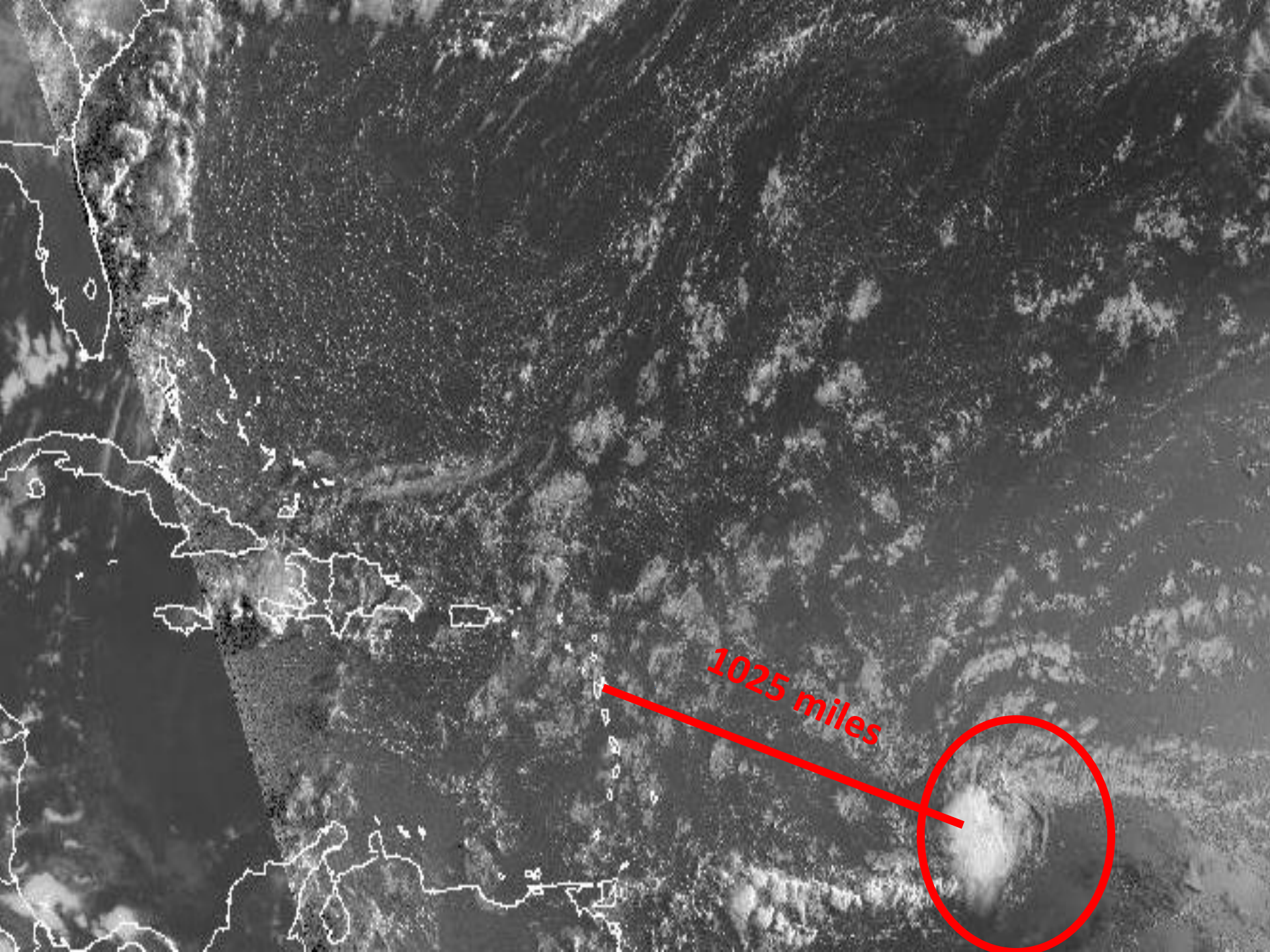


# Tuesday Morning Tropical Update for Tropical Depression #2







1025 miles



# **Tropical Depression Iwo**

5 AM EDT Tue Jul 22 2014

Position 12.2 N 46.4 W

Maximum Winds 35 mph

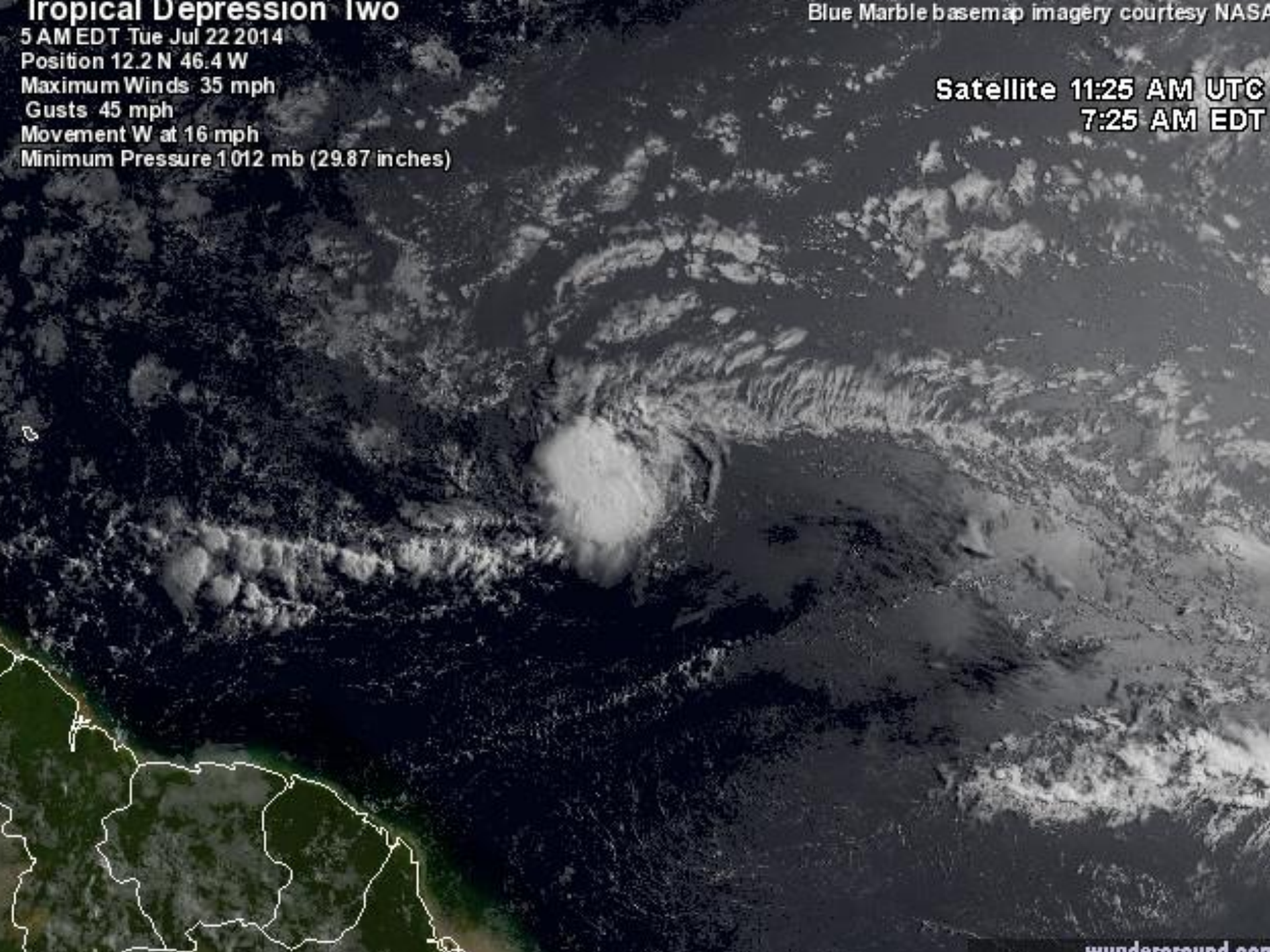
Gusts 45 mph

Movement W at 16 mph

Minimum Pressure 1012 mb (29.87 inches)

Blue Marble basemap imagery courtesy NASA

**Satellite 11:25 AM UTC  
7:25 AM EDT**





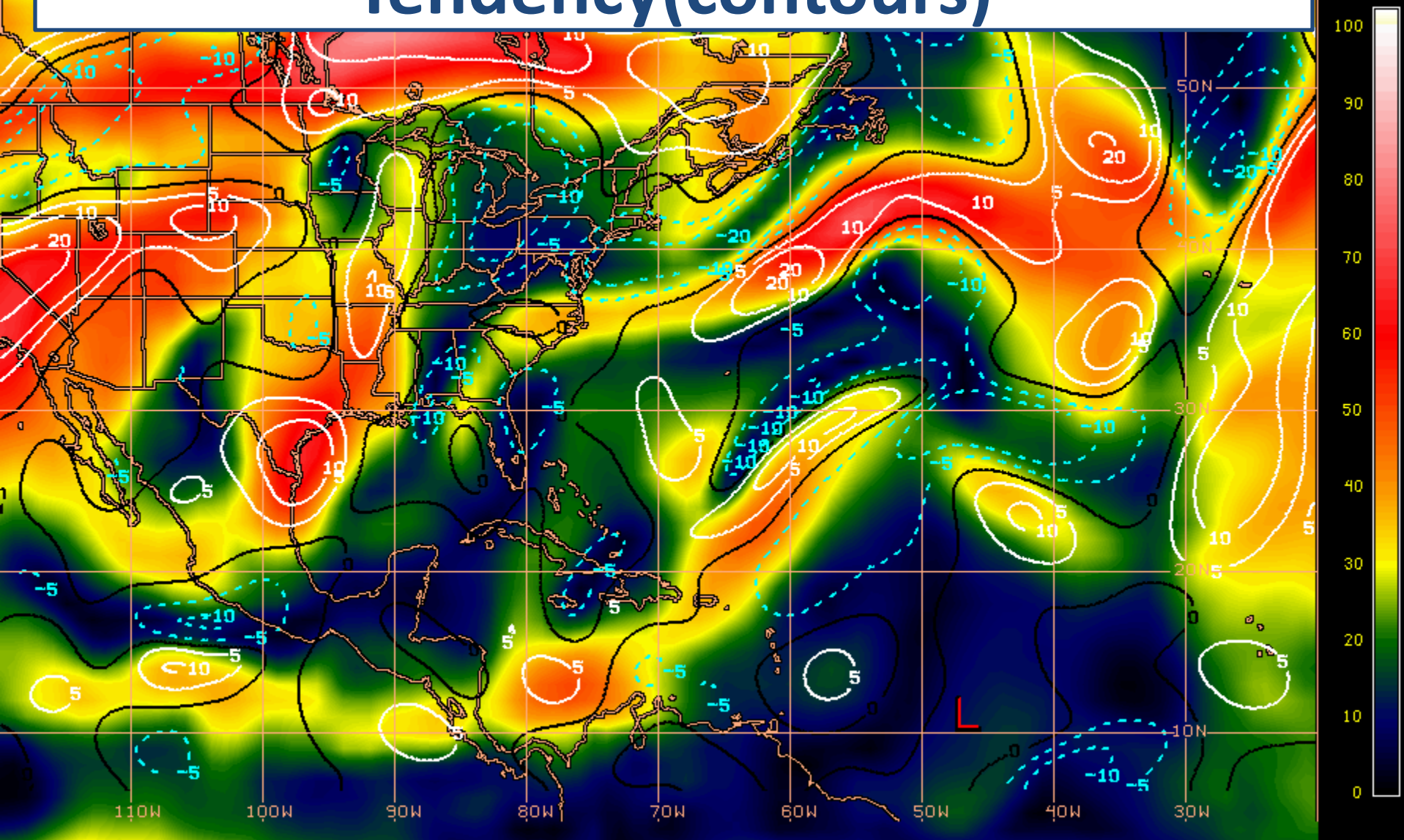


A satellite image of a tropical cyclone, showing a large, dark, swirling cloud structure. A yellow outline highlights a specific region of the storm, and a red circle highlights a smaller, more intense feature within that region. The text "Dry Air" is overlaid in yellow, and "TD#2" is overlaid in red with an arrow pointing to the circled feature.

**Dry  
Air**

**TD#2**

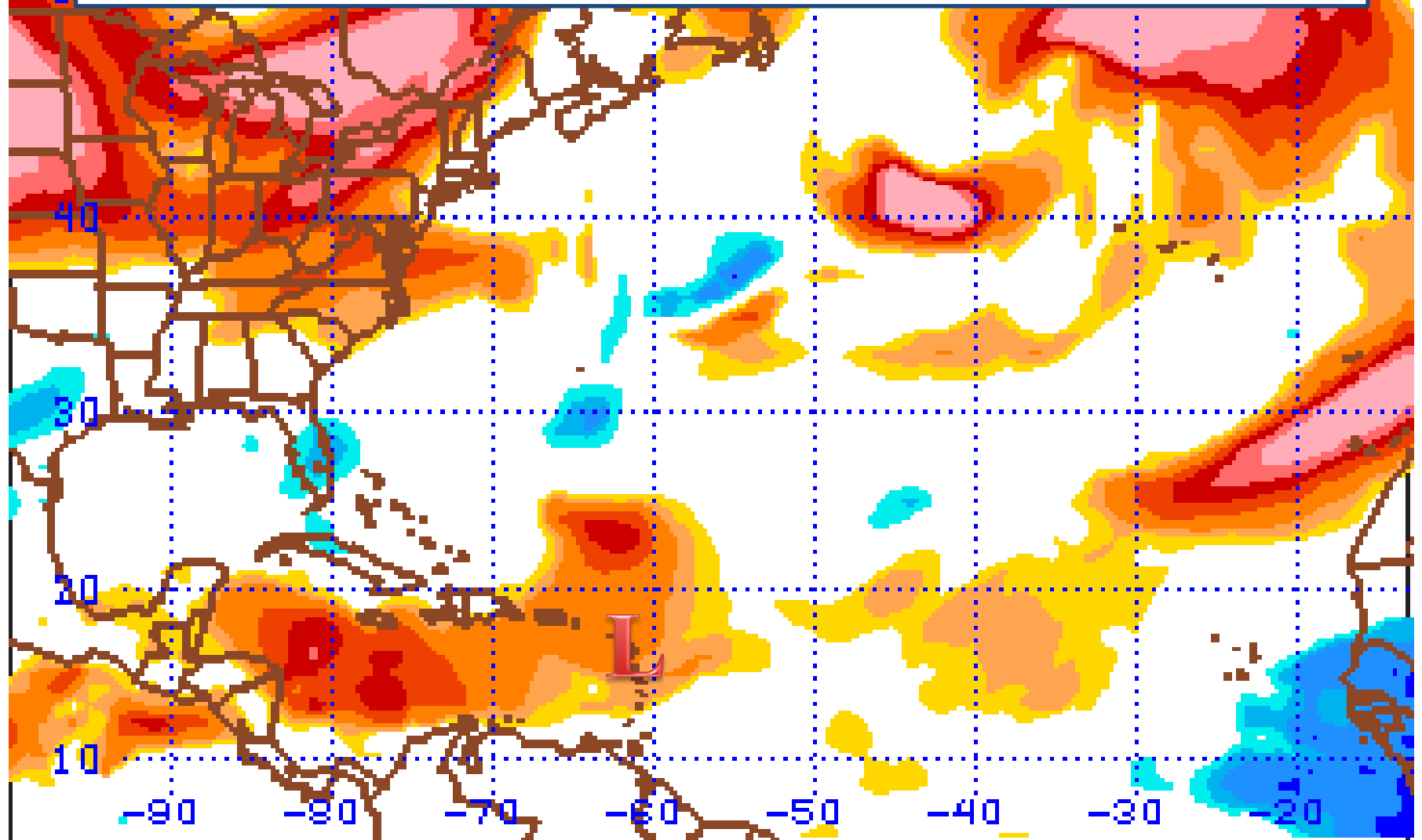
# Wind Shear (Shaded) and Shear Tendency(contours)



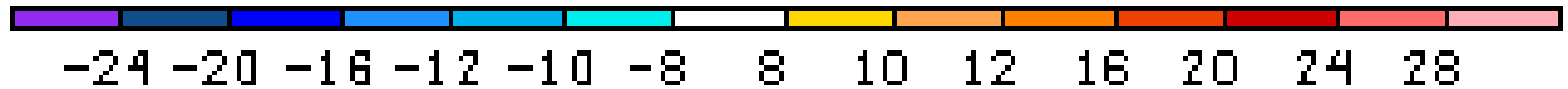
Shear Tendency (KTS) Over Past 24 Hours: Increasing — Decreasing ----

GOES EAST 24 HOUR WIND SHEAR TENDENCY PRODUCT - 8888 UTC - 22 JUL 14 - JPL GIMSS - M-TRSS

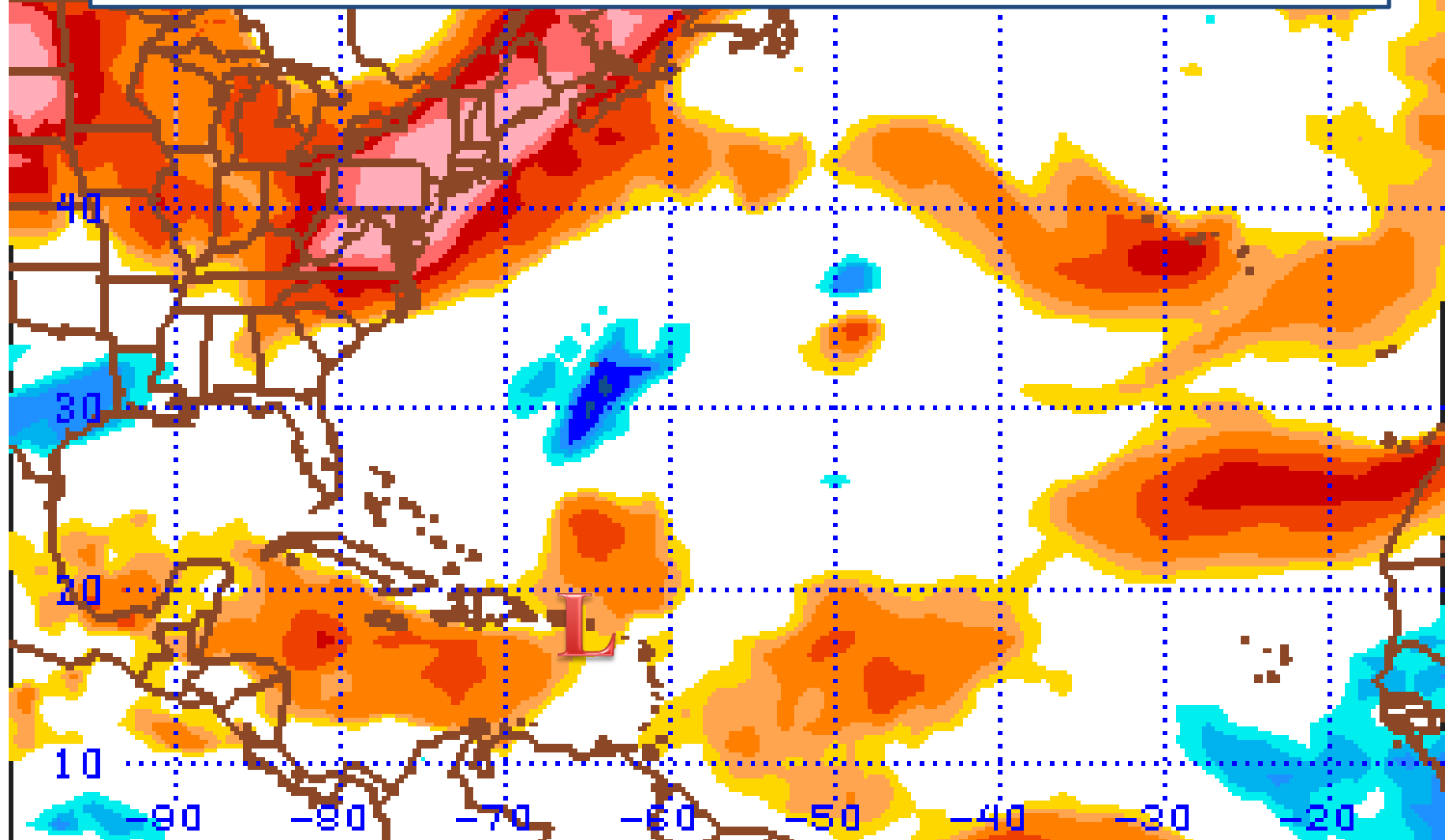
# Forecast Wind Shear: 48 hours



B50-250MB ZONAL SHEAR (M/SEC) THU 140724/000DY048



# Forecast Wind Shear: 72 hours

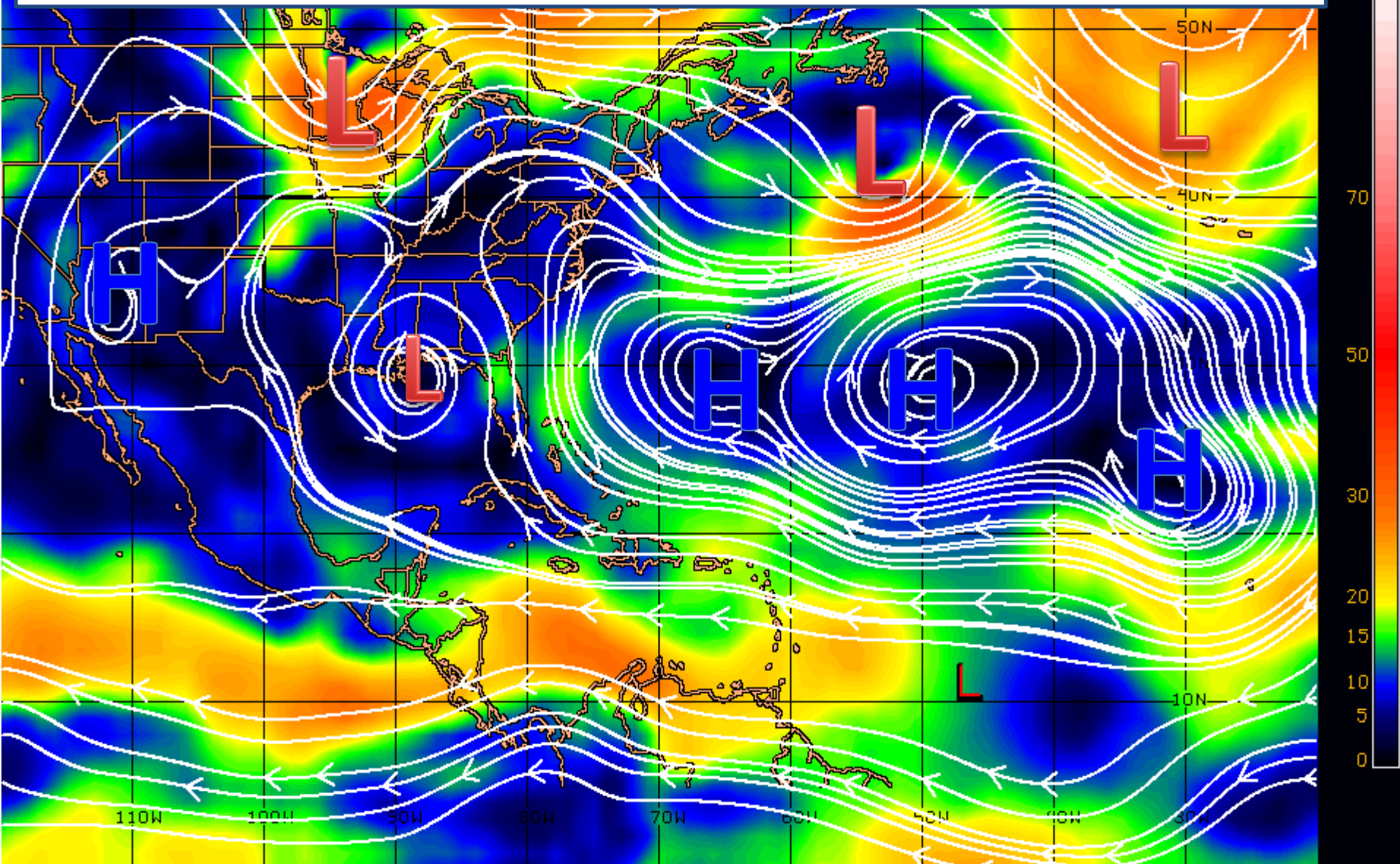


B50-250MB ZONAL SHEAR (M/SEC) FRI 140725/0000Y072

-24 -20 -16 -12 -10 -8 8 10 12 16 20 24 28

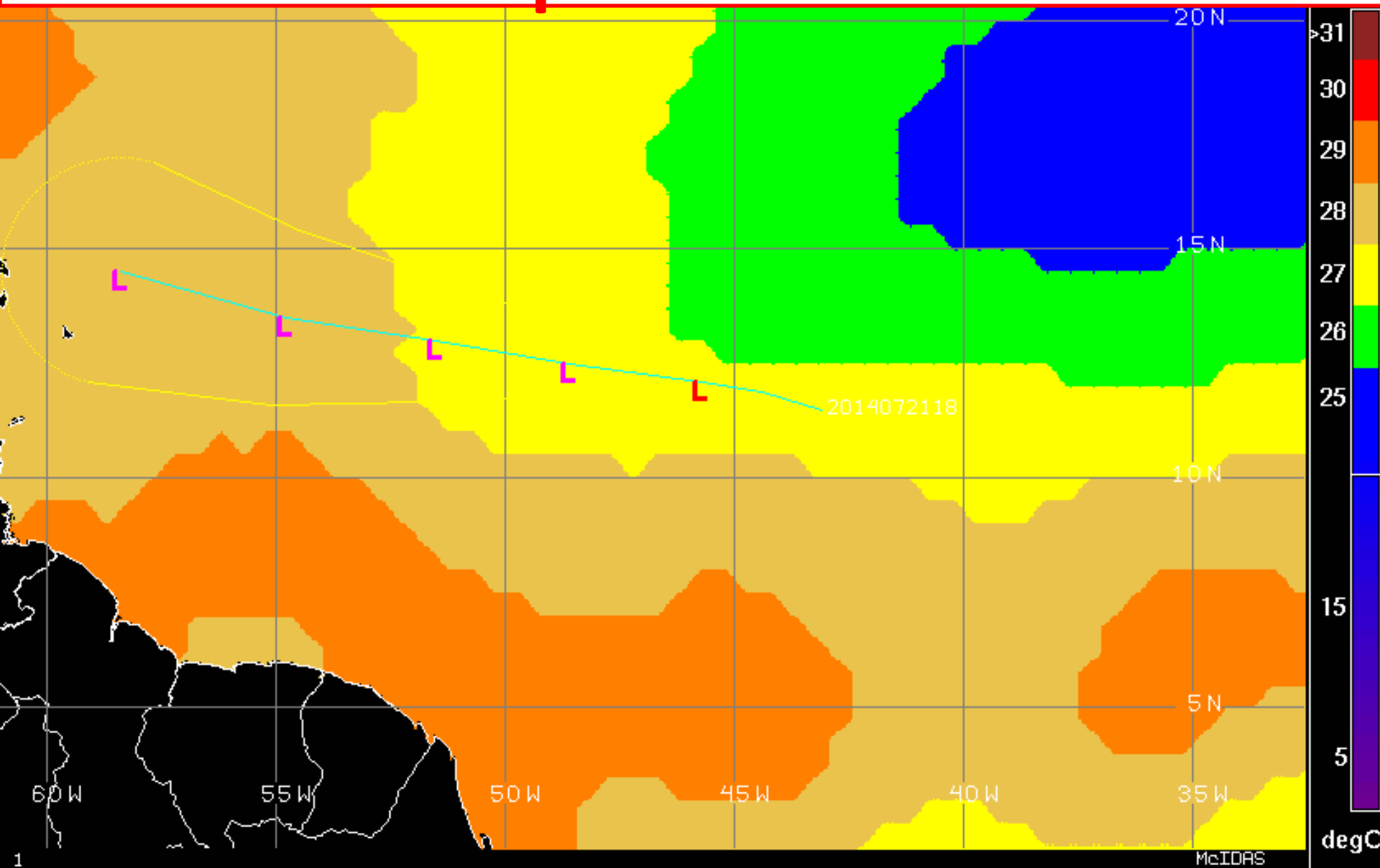


# Steering Currents

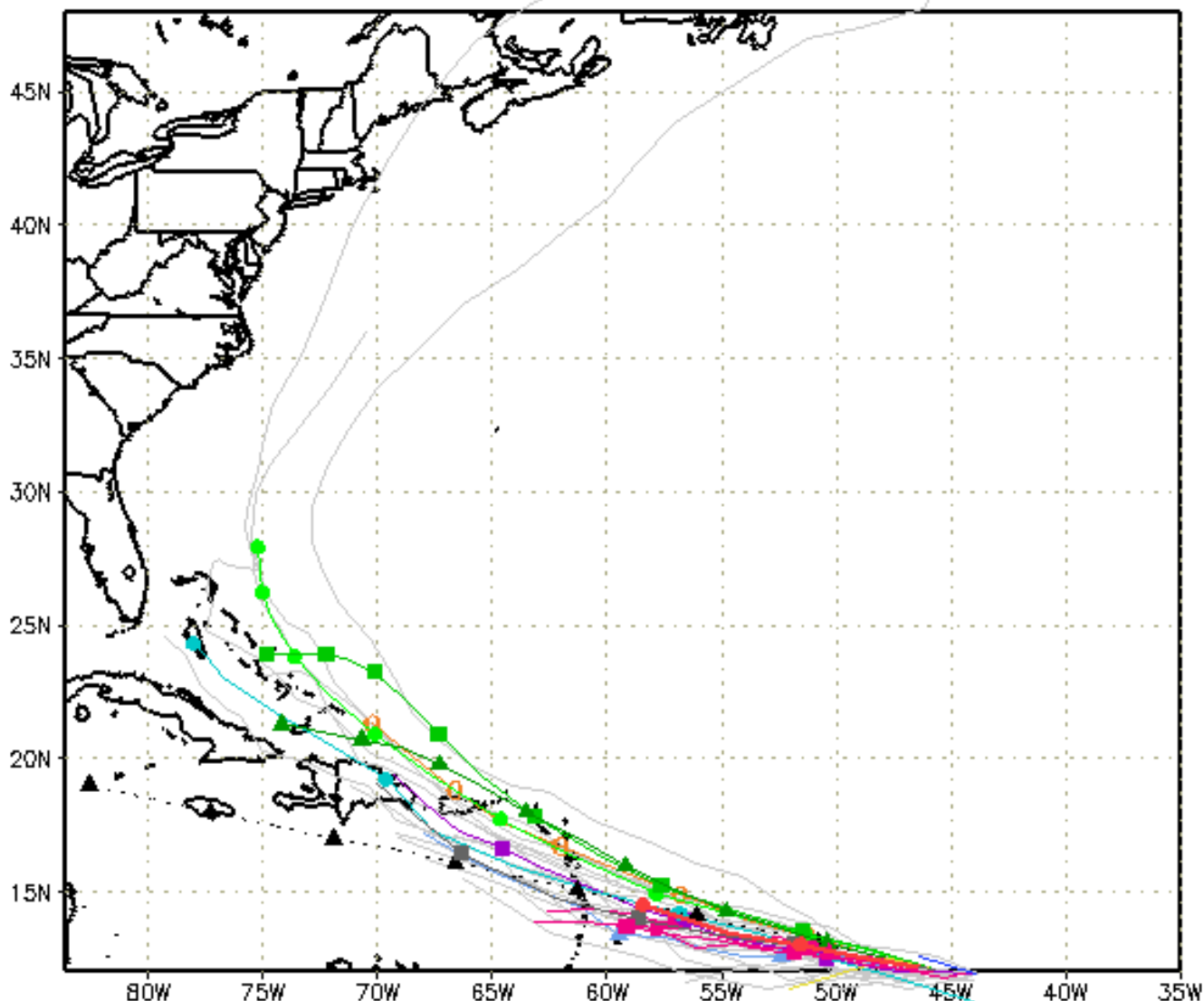




# Sea Surface Temperatures across the Tropical Atlantic



XTRP 22/0600Z  
 TVCN 22/0600Z  
 TV15 22/0600Z  
 NHC 22/0900Z  
 BAMD 22/0600Z  
 BAMB 22/0600Z  
 BAMS 22/0600Z  
 GFDL 22/0000Z  
 GFDN 22/0600Z  
 HWRF 22/0600Z  
 AHWI 22/0600Z  
 AVNO 22/0600Z  
 AEMN 22/0000Z  
 APxx 22/0000Z  
 FIM9 22/0600Z  
 CMC 22/0600Z  
 UKM 22/0000Z  
 NGX 22/0000Z  
 CLP5 22/0600Z



storm\_02

sfwmd.gov

weather@sfwmd.gov  
22-Jul 07:51EDT

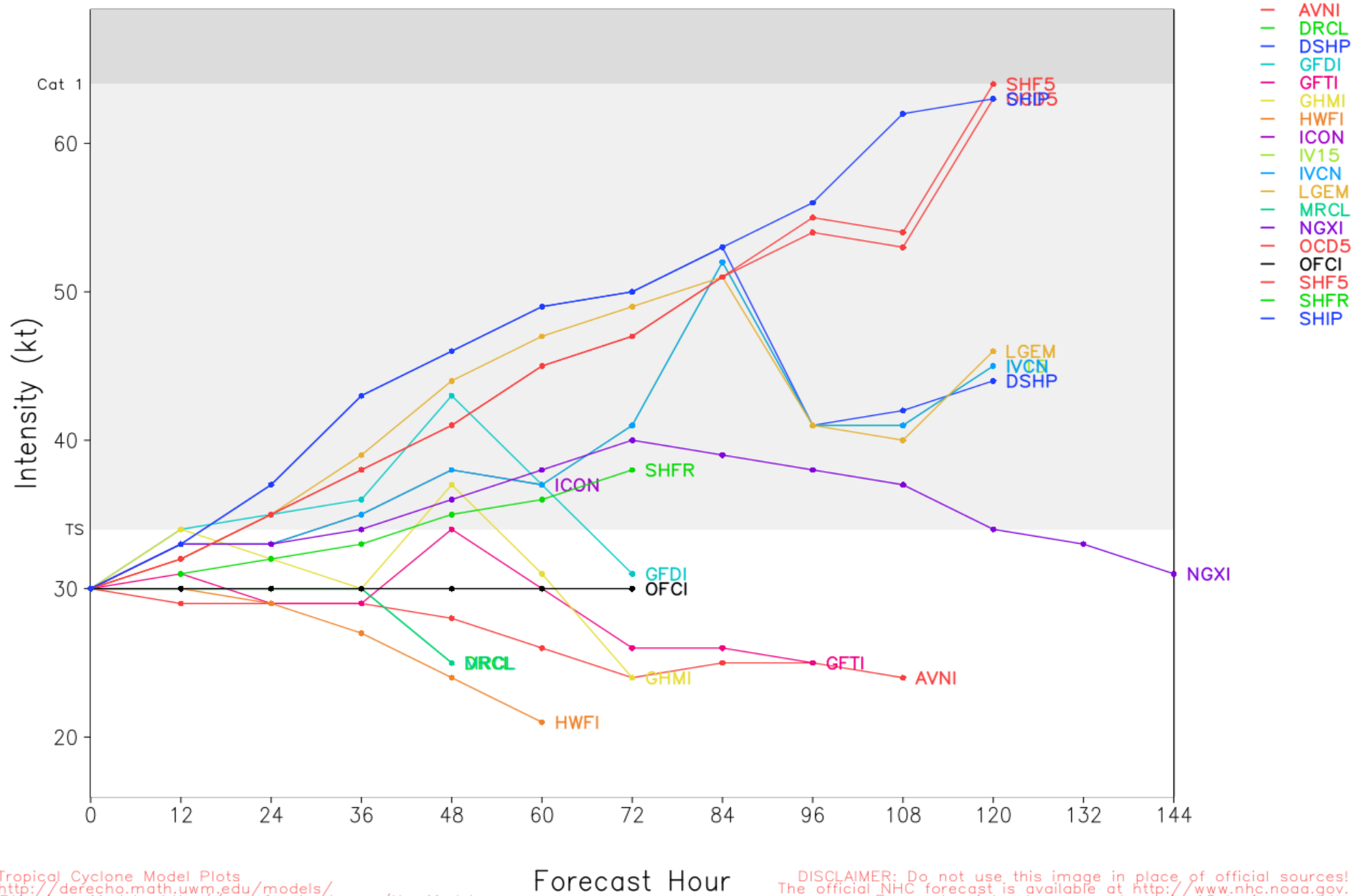
NHC Advisories and County Emergency Management Statements supersede this product.  
 This graphic should complement, not replace, NHC discussions.  
 If anything on this graphic causes confusion, ignore the entire product.  
 For full info, see <http://my.sfwmd.gov/sfwmd/common/images/weather/plots.html>



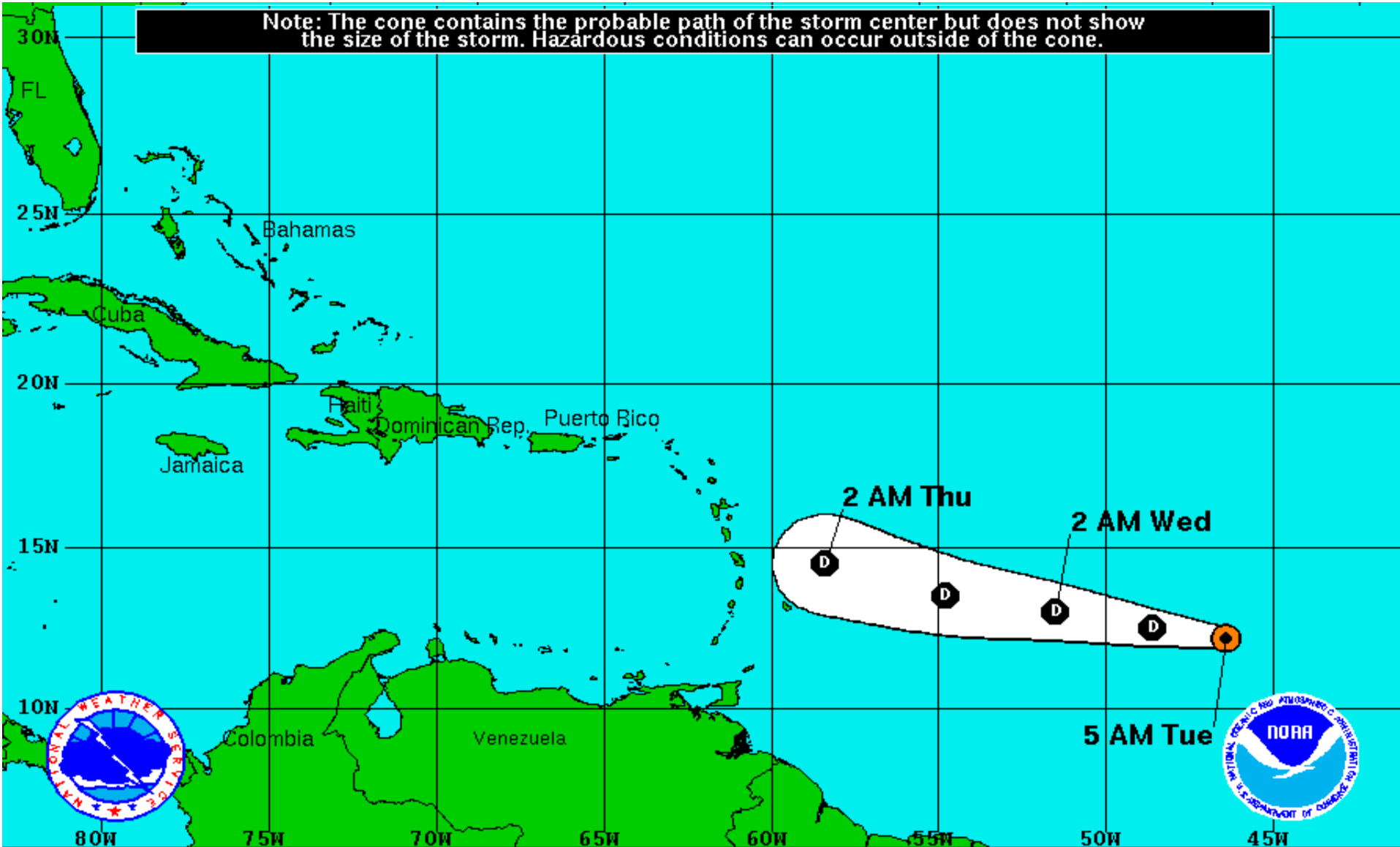


# Atlantic Tropical Depression TWO Model Intensities

Valid Time: 0600 UTC 22 July 2014



Note: The cone contains the probable path of the storm center but does not show the size of the storm. Hazardous conditions can occur outside of the cone.



## Tropical Depression Two

Tuesday July 22, 2014

5 AM EDT Advisory 3

NWS National Hurricane Center

## Current Information:

Center Location 12.2 N 46.4 W

Max Sustained Wind 35 mph

Movement W at 16 mph

## Forecast Positions:

● Tropical Cyclone ○ Post-Tropical

Sustained Winds: D < 39 mph

S 39-73 mph H 74-110 mph M > 110mph

## Potential Track Area:

Day 1-3 Day 4-5

## Watches:

Hurricane Trop.Storm

## Warnings:

Hurricane Trop.Storm