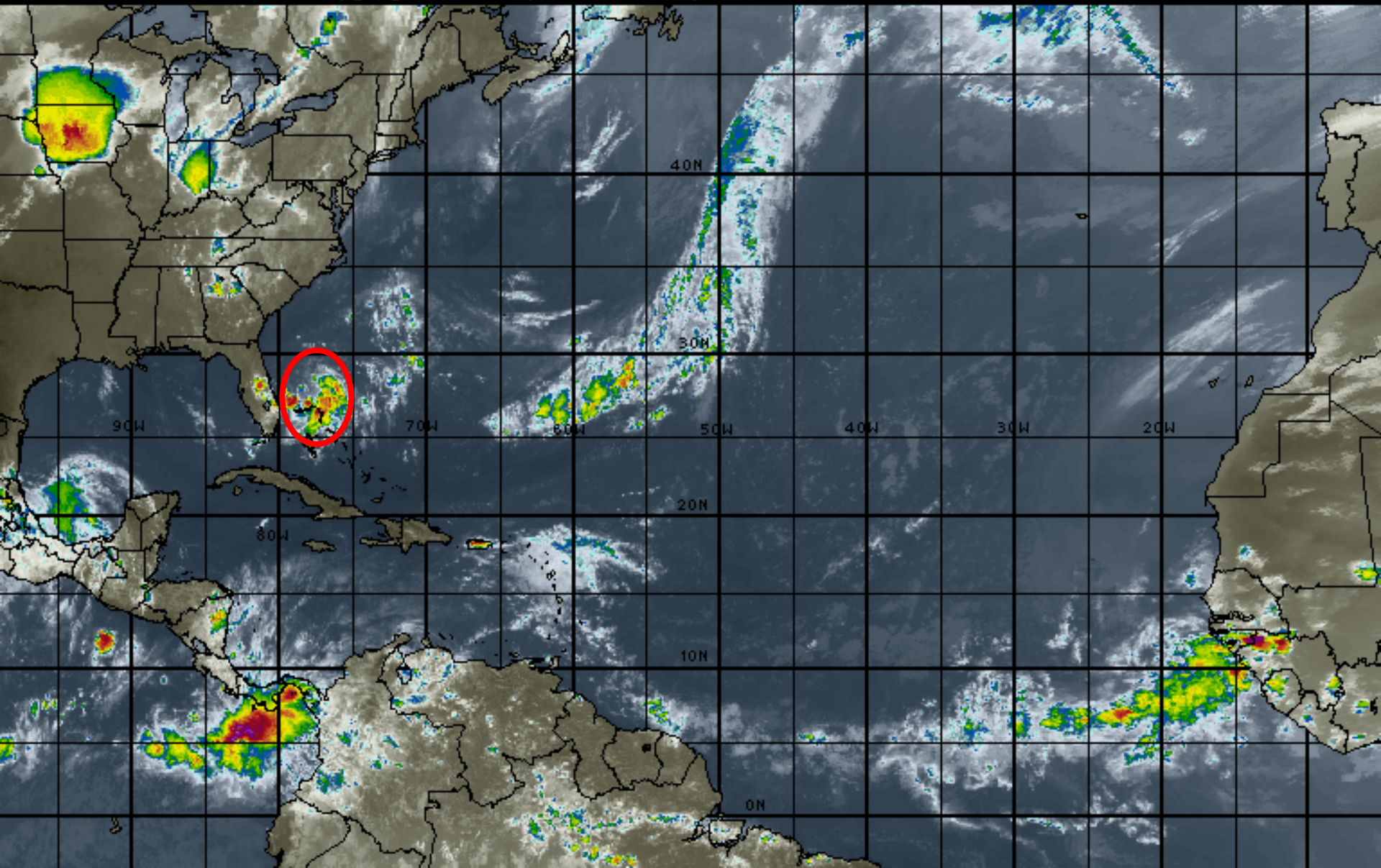


Monday Afternoon Tropical Update for Invest 91L

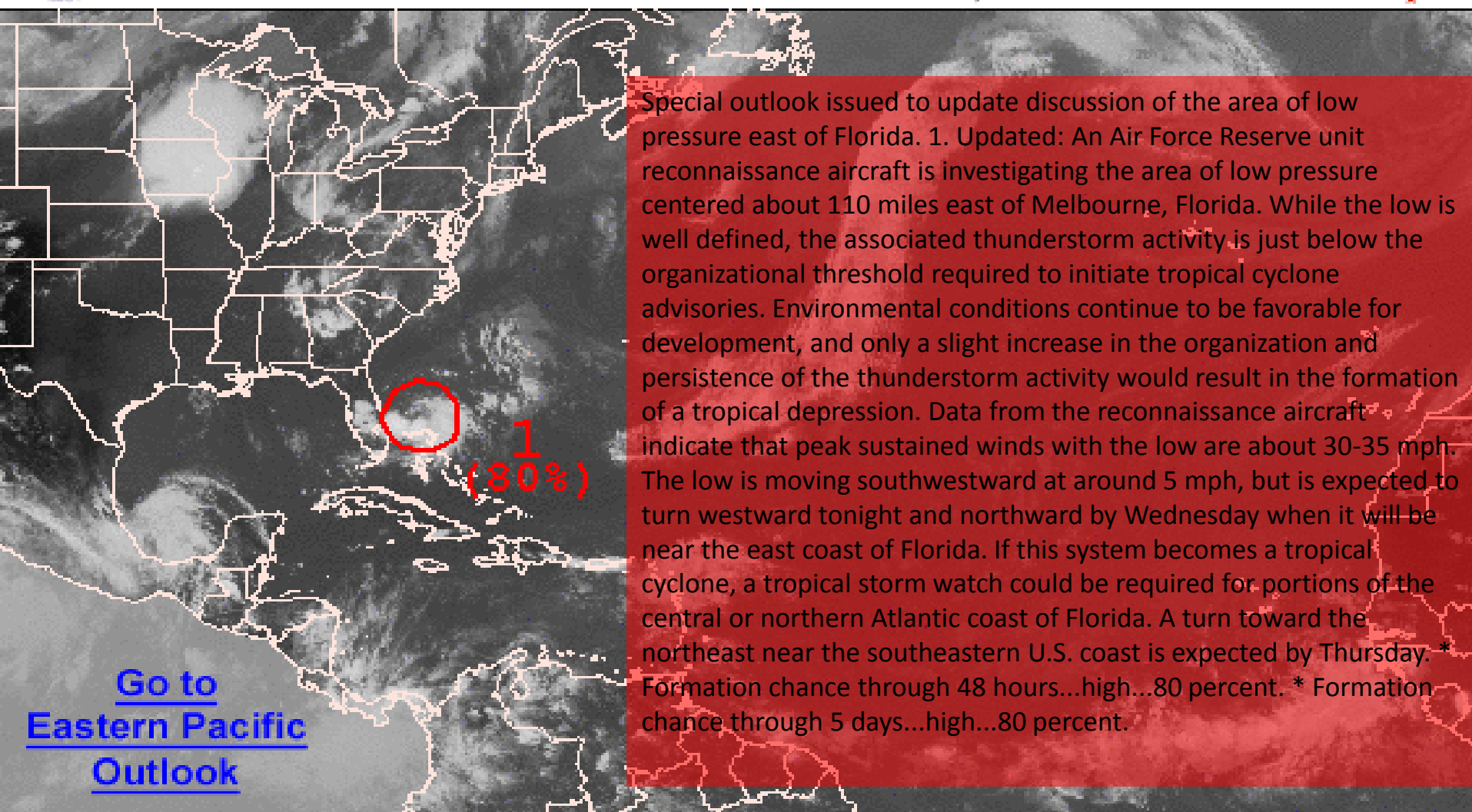
18:00 30-JUN-2014 GMT ©Copyright WSI Corporation <http://www.wsi.com>





Graphical Tropical Weather Outlook

National Hurricane Center Miami, Florida



430 PM EDT MON JUN 30 2014

Satellite Image: 0352 PM EDT

Outlined areas denote current position of systems discussed in the Tropical Weather Outlook. Color indicates probability of tropical cyclone formation within 48 hours.



Low <30%



Medium 30-50%



High >50%

Invest 91L

2 PM Mon Jun 30 2014

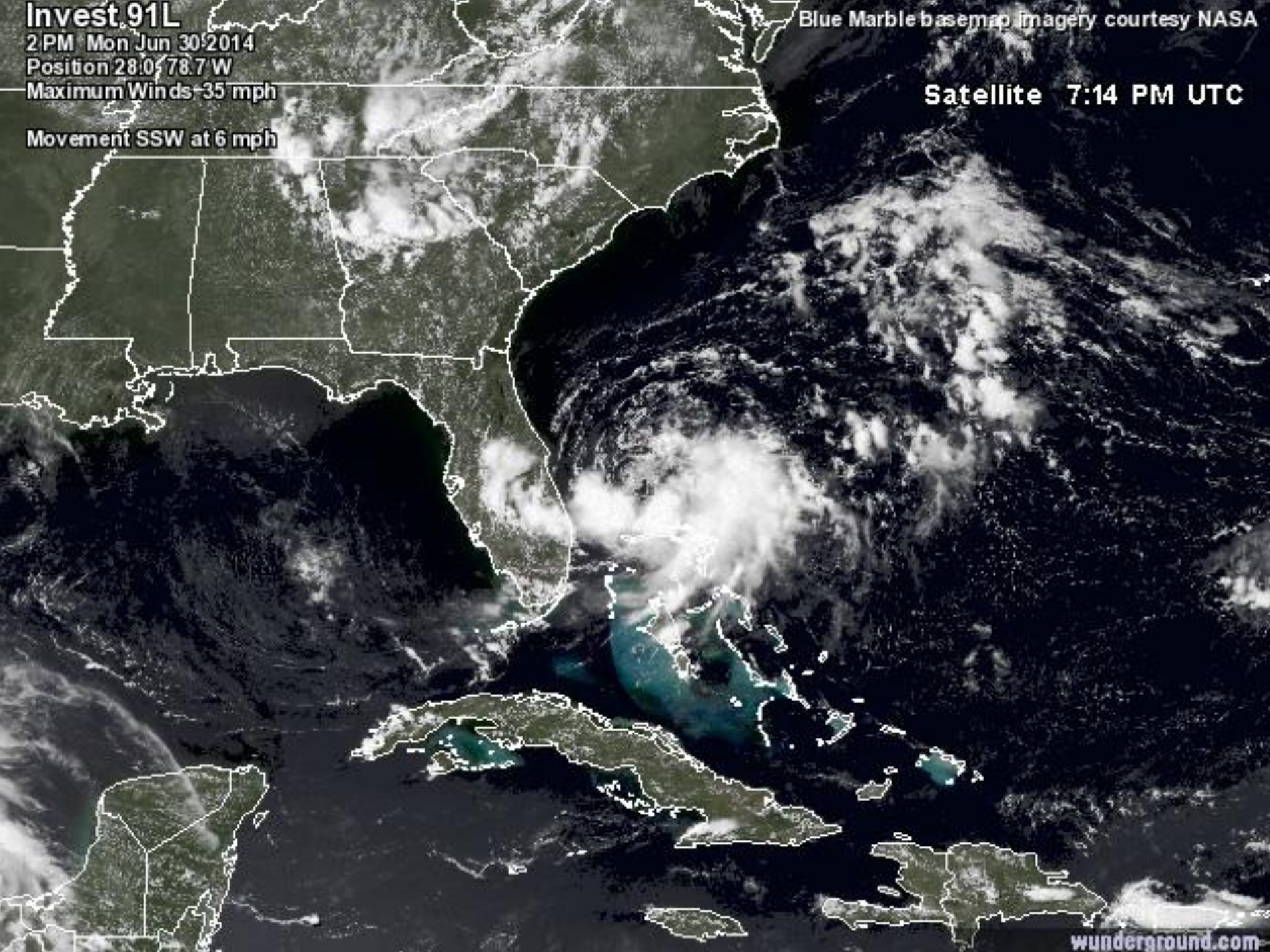
Position 28.0° 78.7° W

Maximum Winds 35 mph

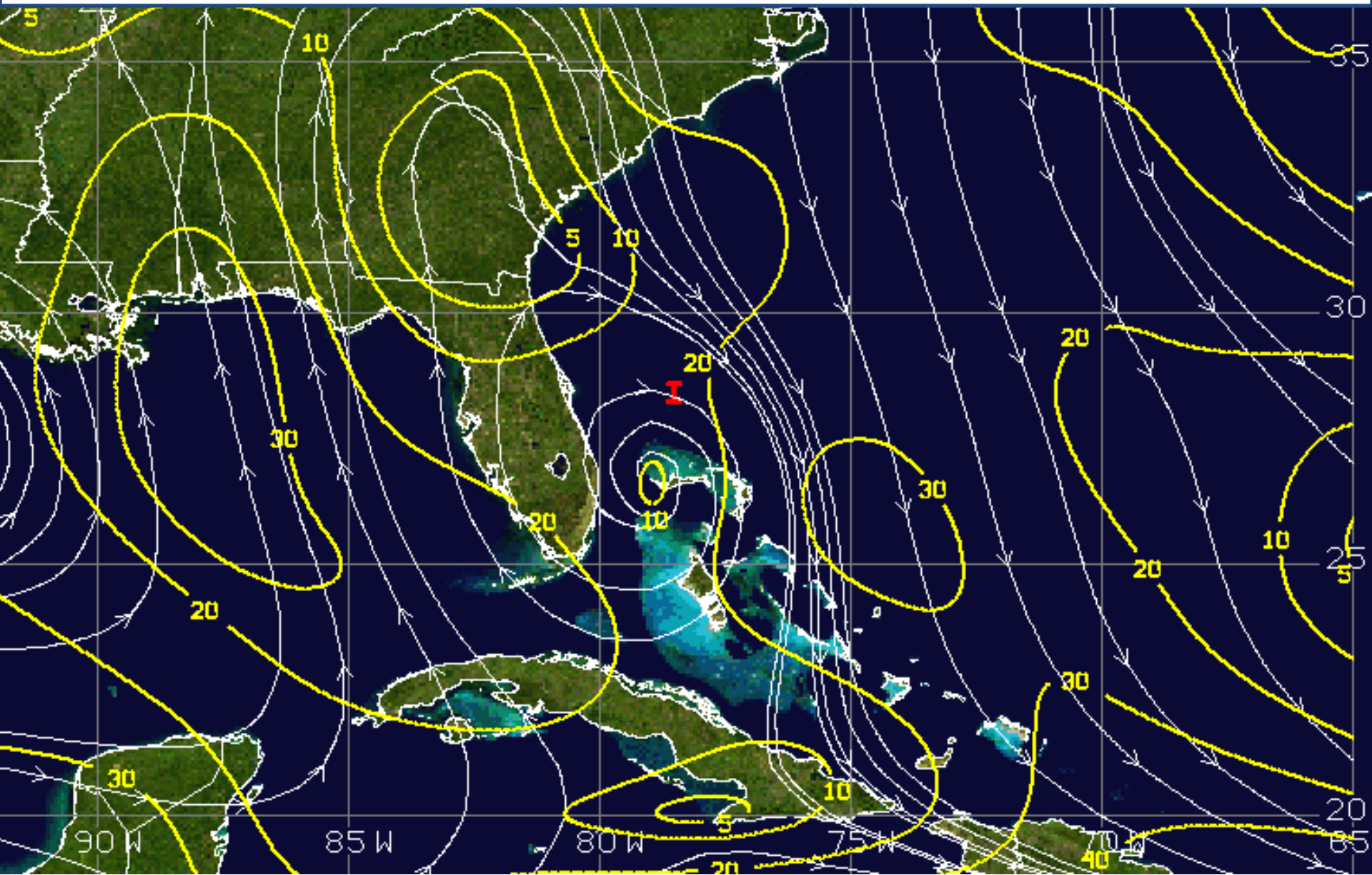
Movement SSW at 6 mph

Blue Marble basemap imagery courtesy NASA

Satellite 7:14 PM UTC

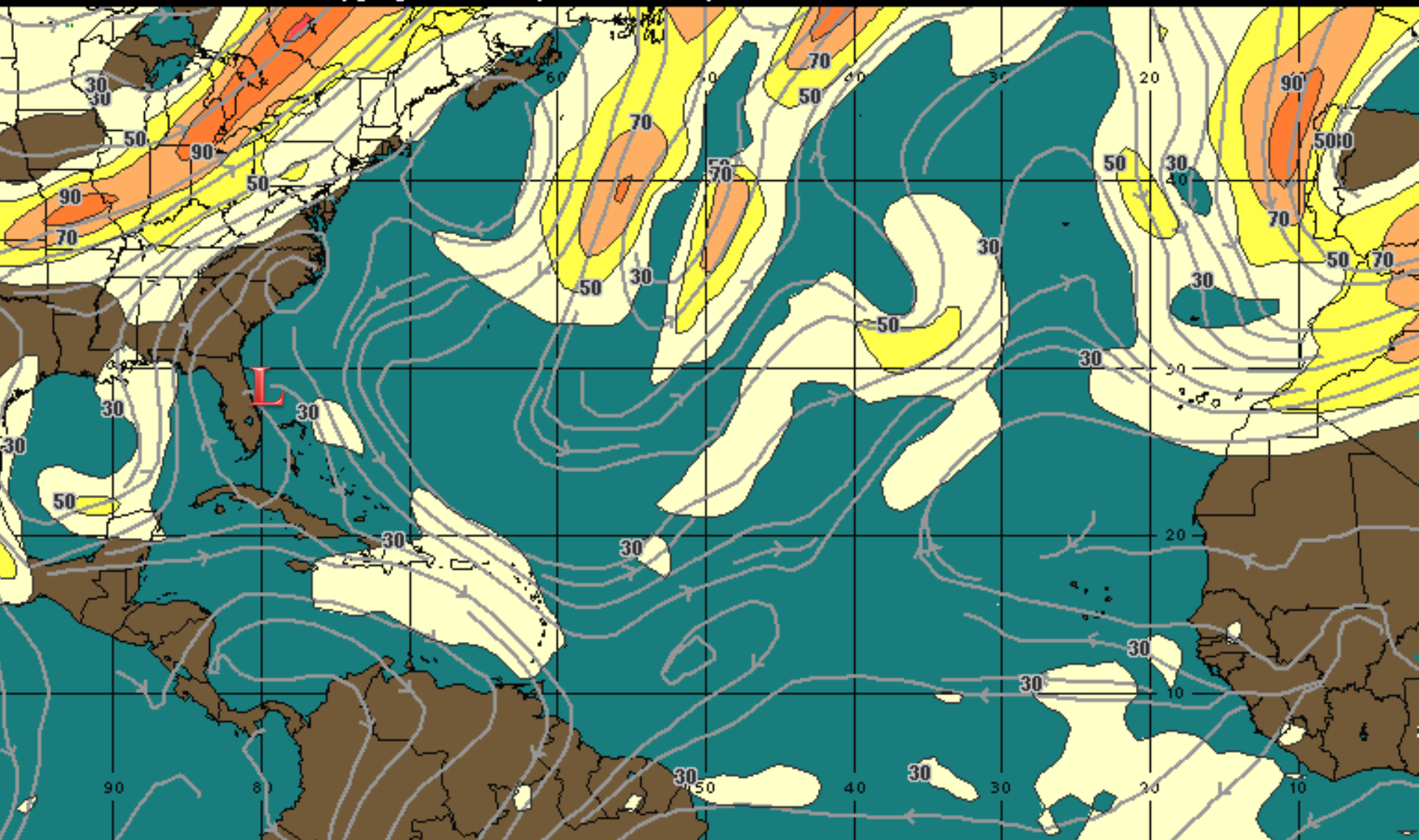


Current Wind Shear



Forecast Wind Shear: 48 hours

12:00 02-JUL-2014 GMT ©Copyright WSI Corporation <http://www.wsi.com>



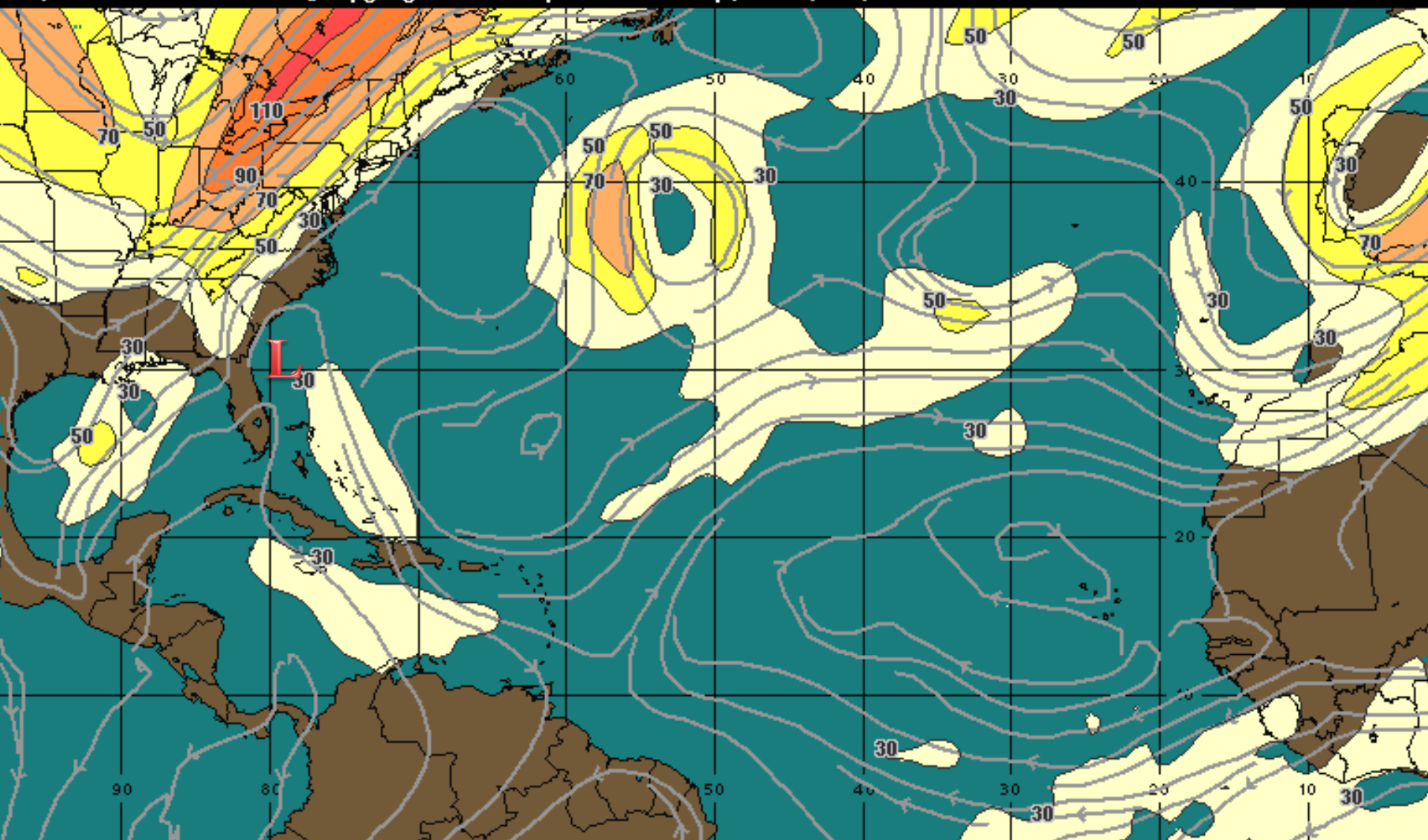
200Mb Wind Speed / Streamline Forecast
Valid 1200 UTC Wed 02-Jul-14

30 mph 50 70 90 110 130 150 +

WSI®

Forecast Wind Shear: 72 hours

12:00 03-JUL-2014 GMT ©Copyright WSI Corporation <http://www.wsi.com>

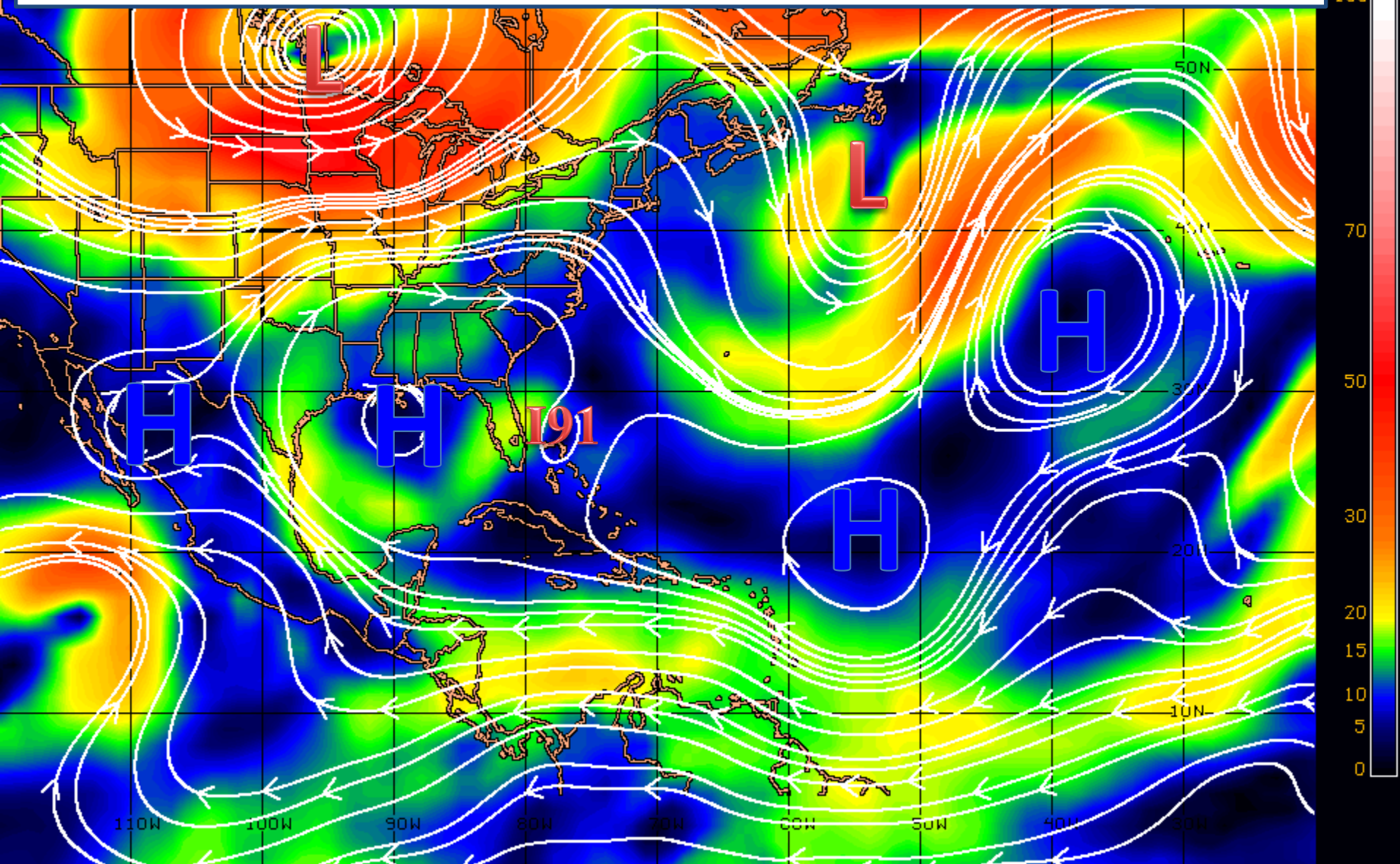


200Mb Wind Speed / Streamline Forecast
Valid 1200 UTC Thu 03-Jul-14

30 mph 50 70 90 110 130 150 +

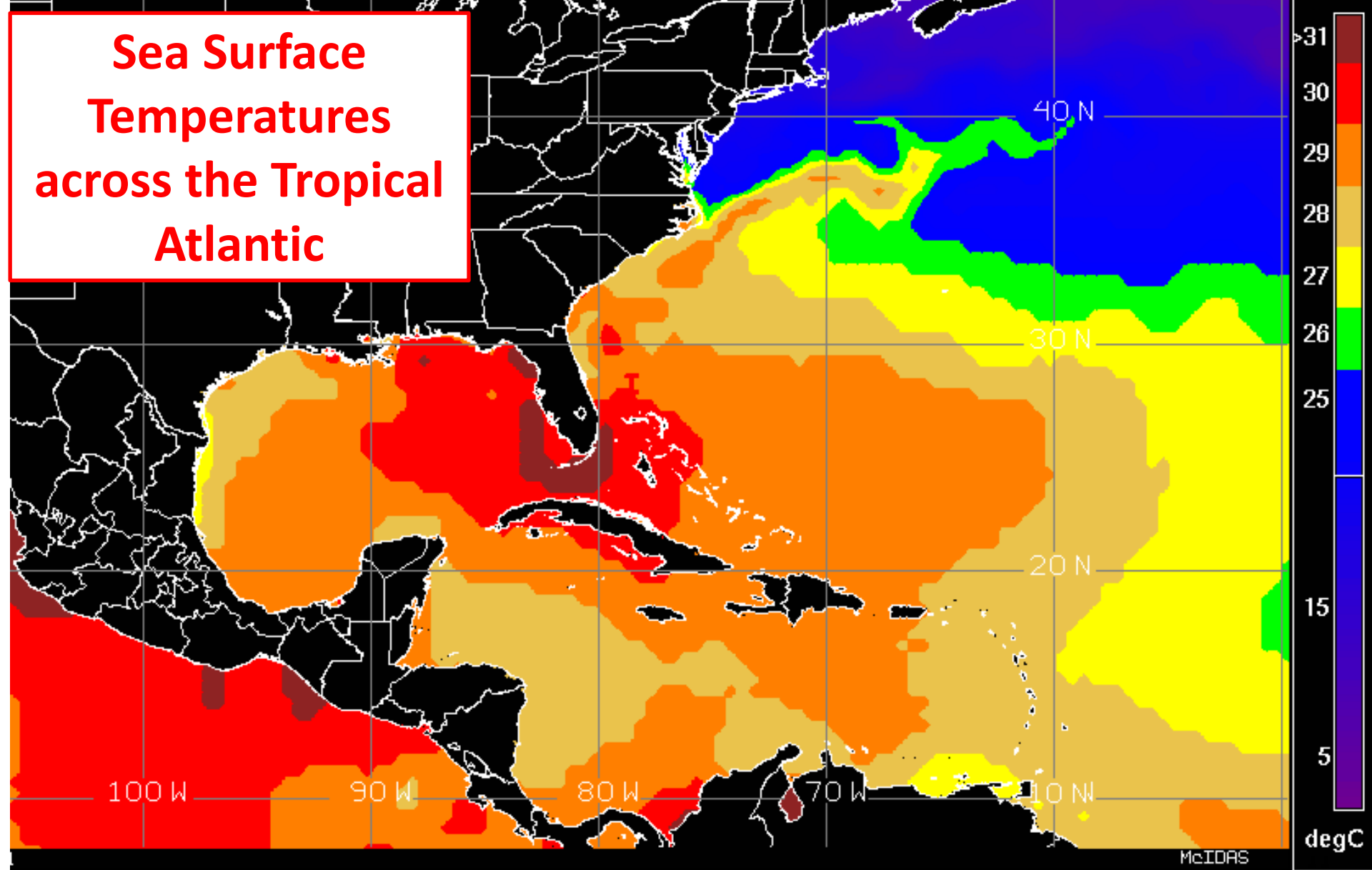
WSI®

Steering Currents



CIMSS ENV STEERING PRODUCT: 500-850 HPA LAYER (FOR TC MSLP RANGE: 990-999 HPA) 0900 UTC 30JUN14

Sea Surface Temperatures across the Tropical Atlantic

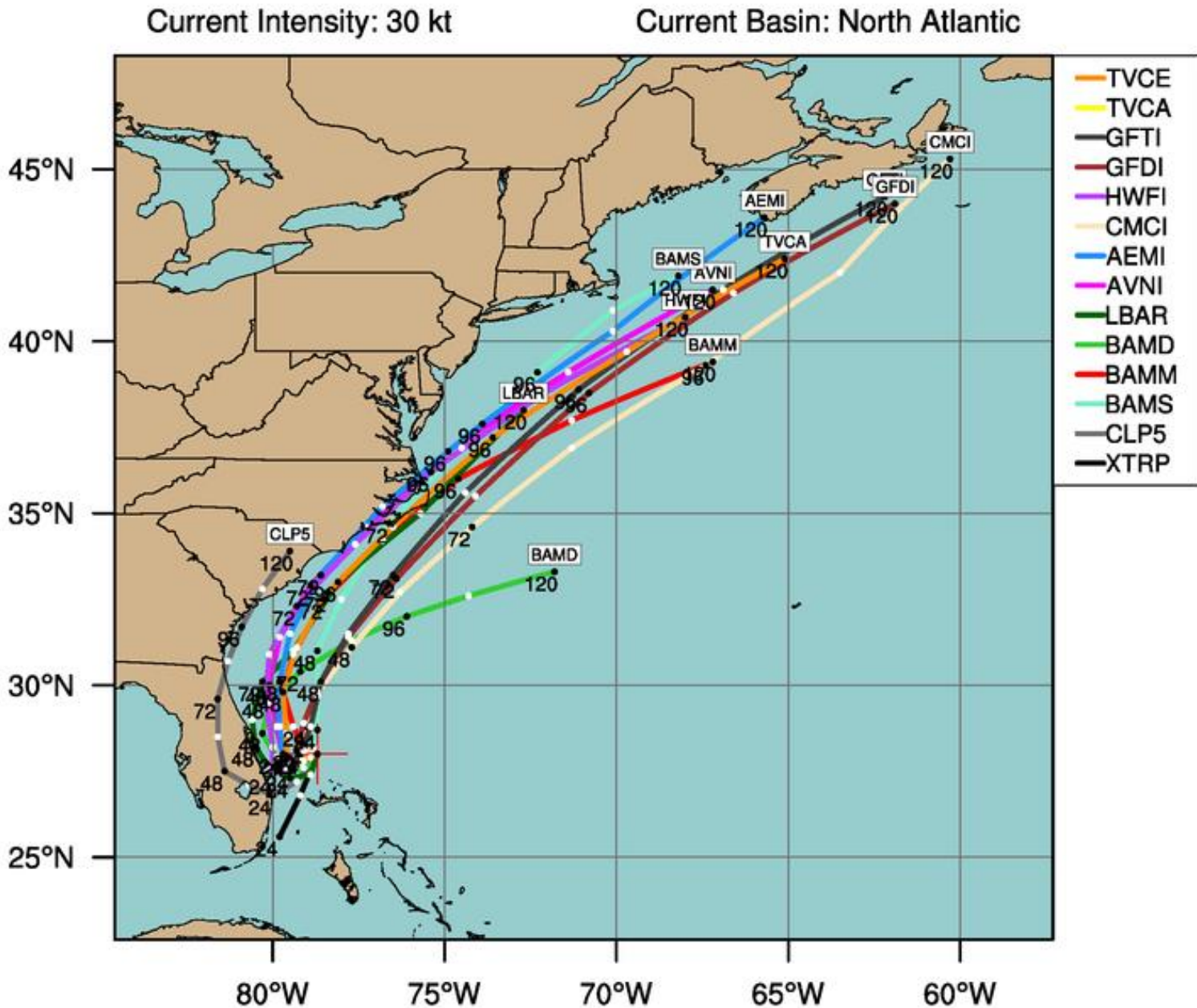


McIDAS

degC

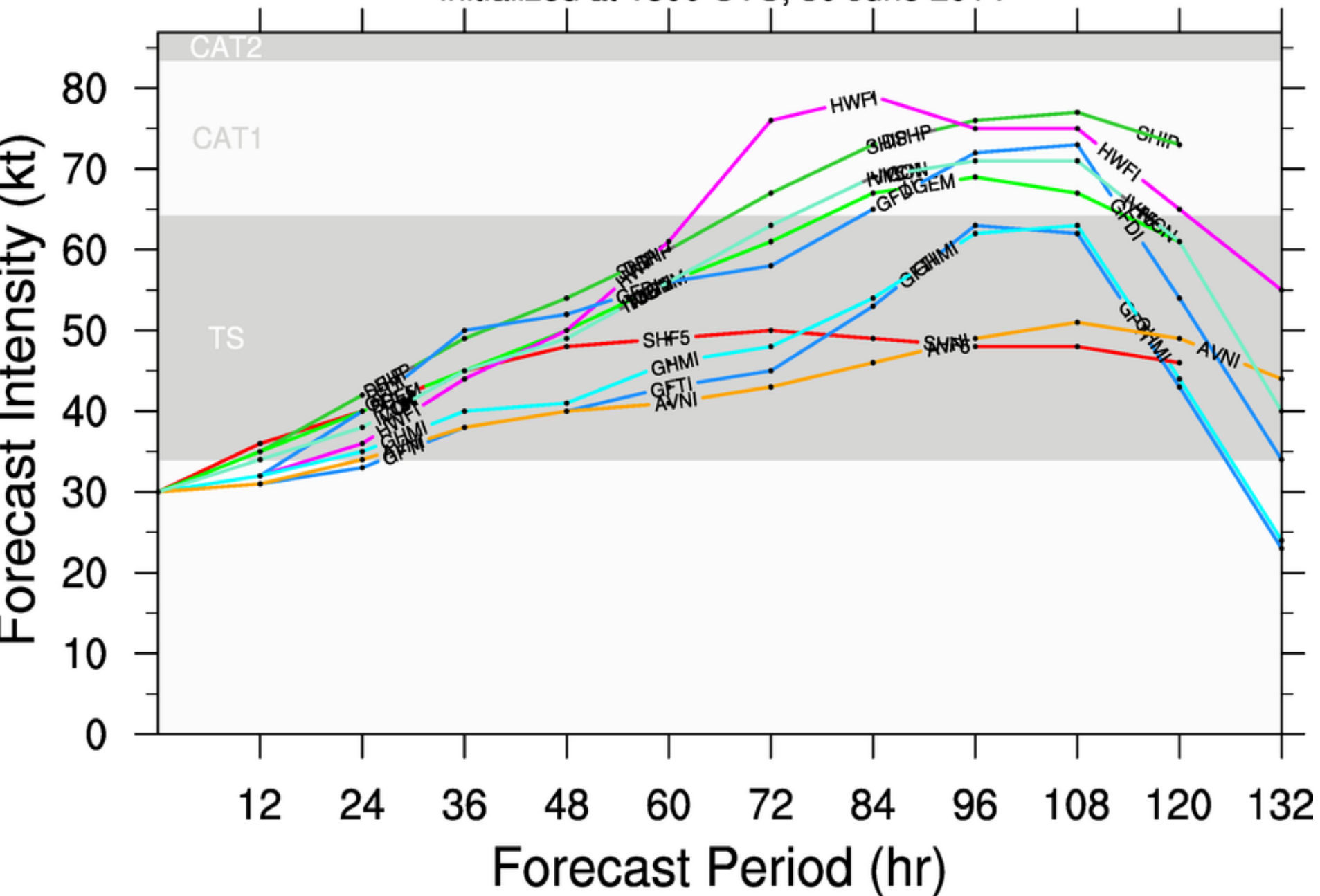
- | | | | |
|---|---------------|----------|-----------------------|
| — | LDN/WAVE | I | - Invest Area |
| — | TROPICAL DEPR | L | - Tropical Depression |
| — | TROPICAL STRM | 6 | - Tropical Storm |
| — | CATEGORY 1 | 6 | - Hurricane/Typhoon |
| — | CATEGORY 2 | | (w/ category) |
| — | CATEGORY 3 | | |
| — | CATEGORY 4 | | |
| — | CATEGORY 5 | | |

Early-cycle track guidance initialized at 1800 UTC, 30 June 2014



By using this plot, the user agrees to the UCAR Terms of Use

initialized at 1800 UTC, 30 June 2014



5 DAY RAINFALL FORECAST

