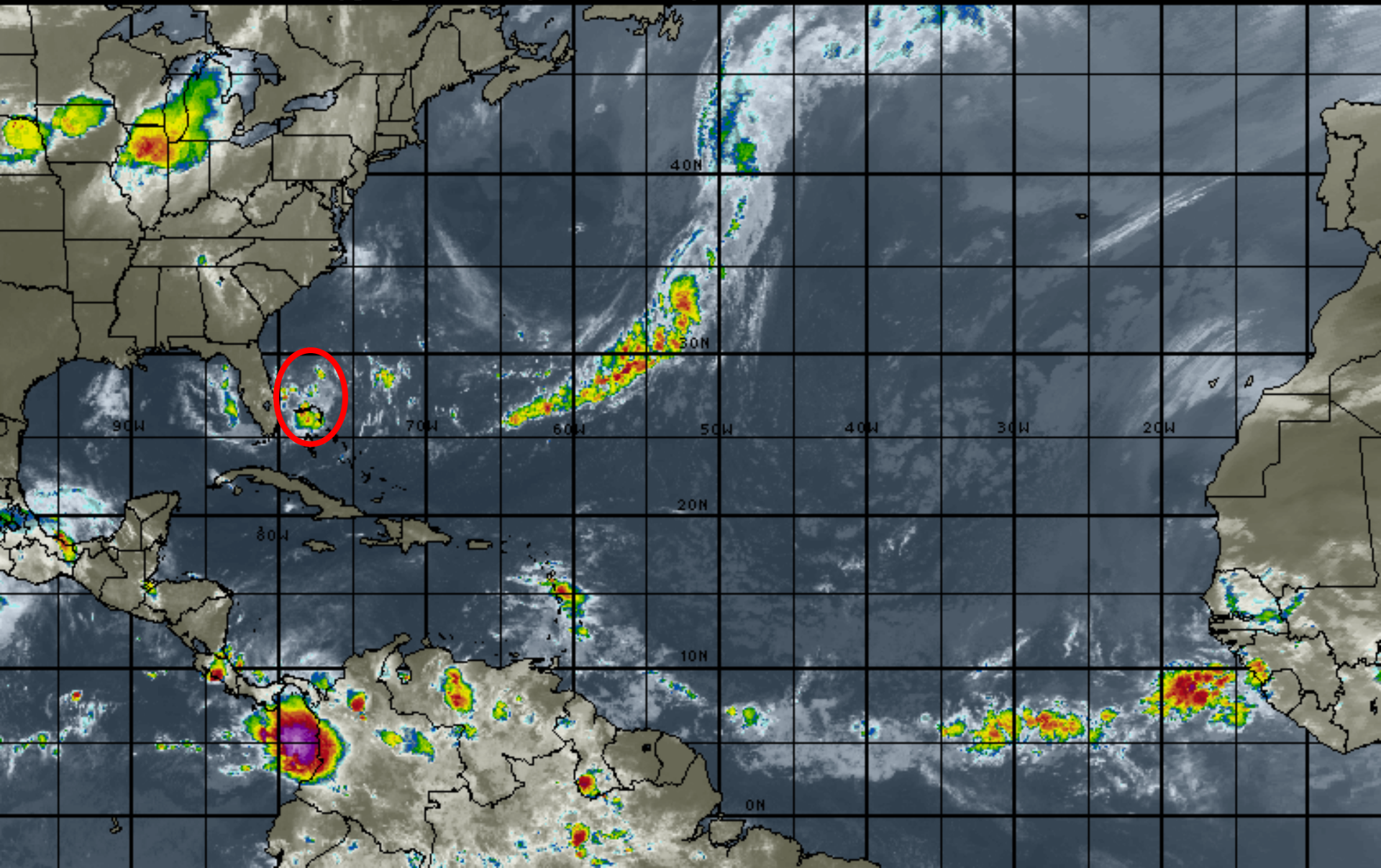


Monday Morning Tropical Update for Invest 91L

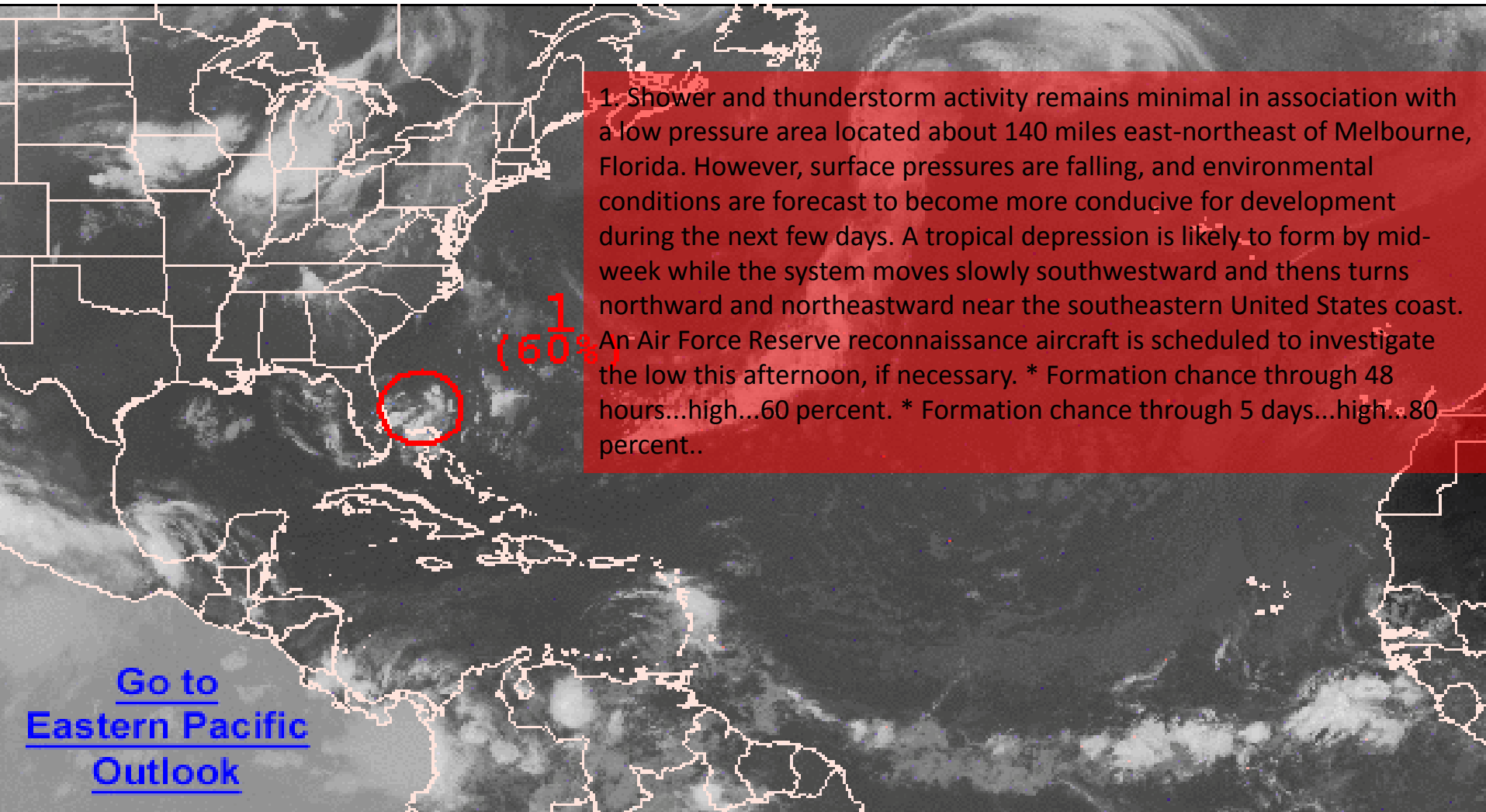
09:00 30-JUN-2014 GMT ©Copyright WSI Corporation <http://www.wsi.com>





Graphical Tropical Weather Outlook

National Hurricane Center Miami, Florida



1. Shower and thunderstorm activity remains minimal in association with a low pressure area located about 140 miles east-northeast of Melbourne, Florida. However, surface pressures are falling, and environmental conditions are forecast to become more conducive for development during the next few days. A tropical depression is likely to form by mid-week while the system moves slowly southwestward and then turns northward and northeastward near the southeastern United States coast. An Air Force Reserve reconnaissance aircraft is scheduled to investigate the low this afternoon, if necessary. * Formation chance through 48 hours...high...60 percent. * Formation chance through 5 days...high...80 percent..

[Go to
Eastern Pacific
Outlook](#)

800 AM EDT MON JUN 30 2014

Satellite Image: 0700 AM EDT

Outlined areas denote current position of systems discussed in the Tropical Weather Outlook. Color indicates probability of tropical cyclone formation within 48 hours.

 Low <30%

 Medium 30-50%

 High >50%

Invest 91L

2 AM Mon Jun 30 2014

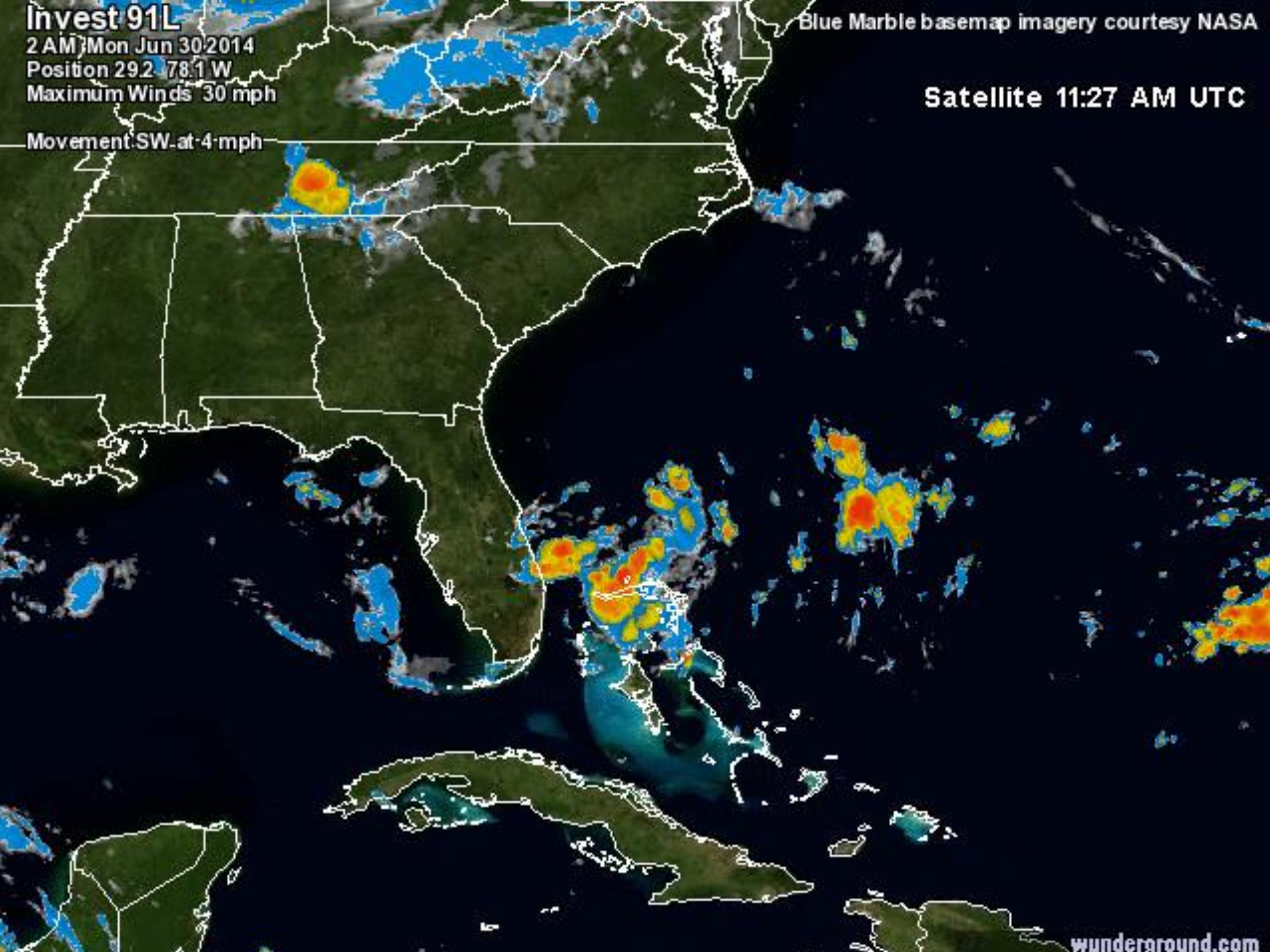
Position 29.2° 78.1° W

Maximum Winds 30 mph

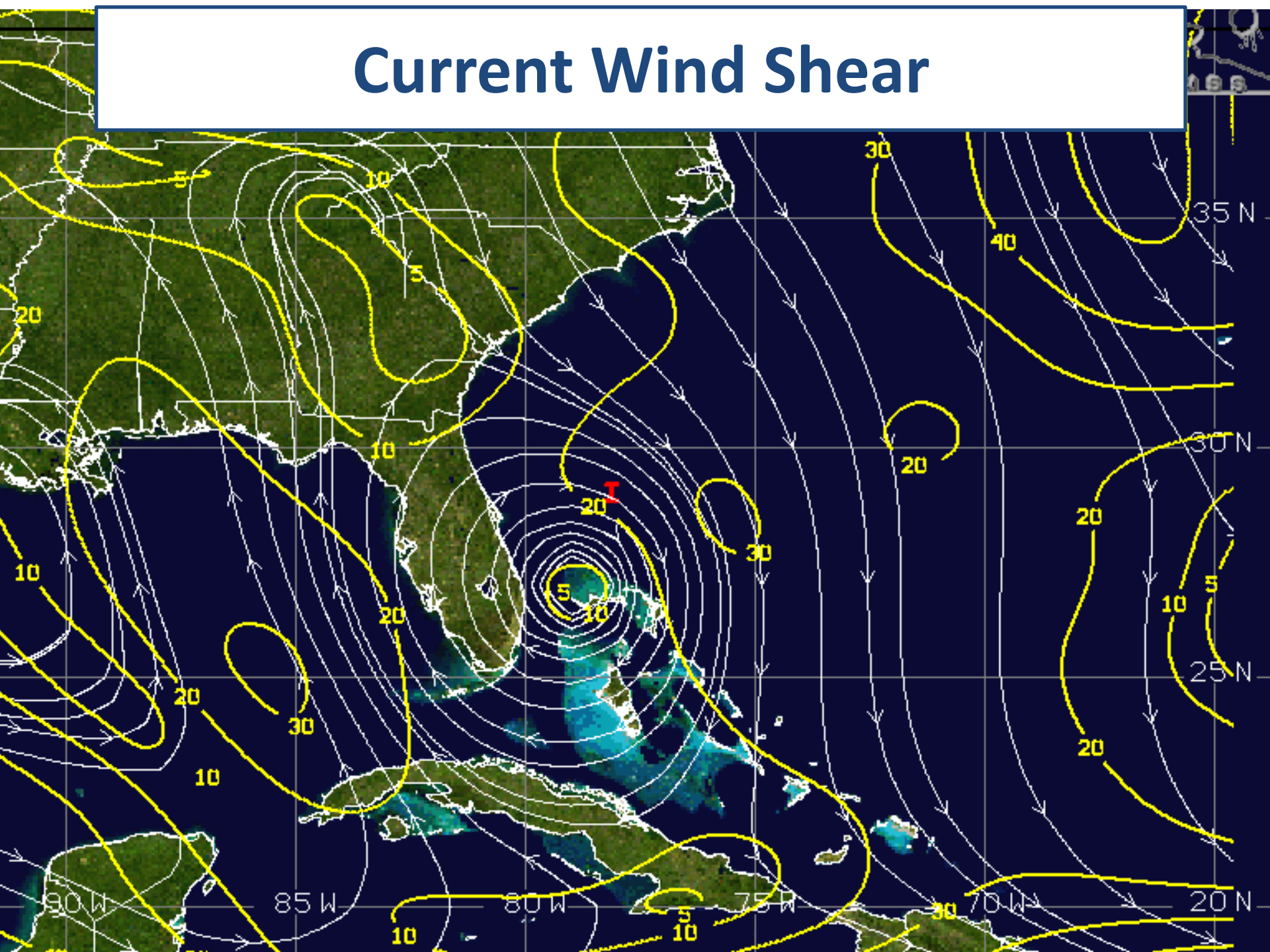
Movement SW at 4 mph

Blue Marble basemap imagery courtesy NASA

Satellite 11:27 AM UTC

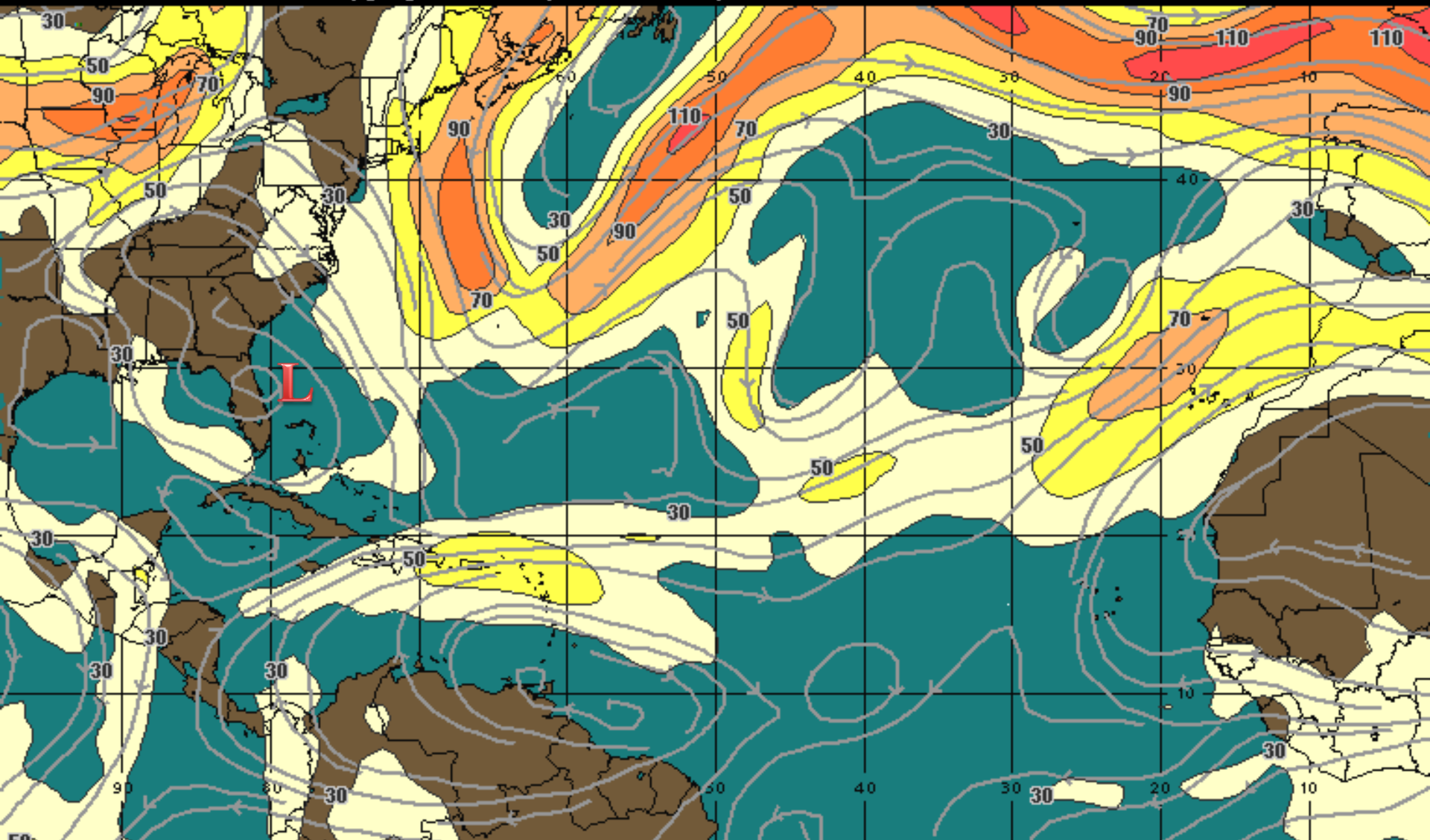


Current Wind Shear



Forecast Wind Shear: 24 hours

00:00 30-JUN-2014 GMT ©Copyright WSI Corporation <http://www.wsi.com>



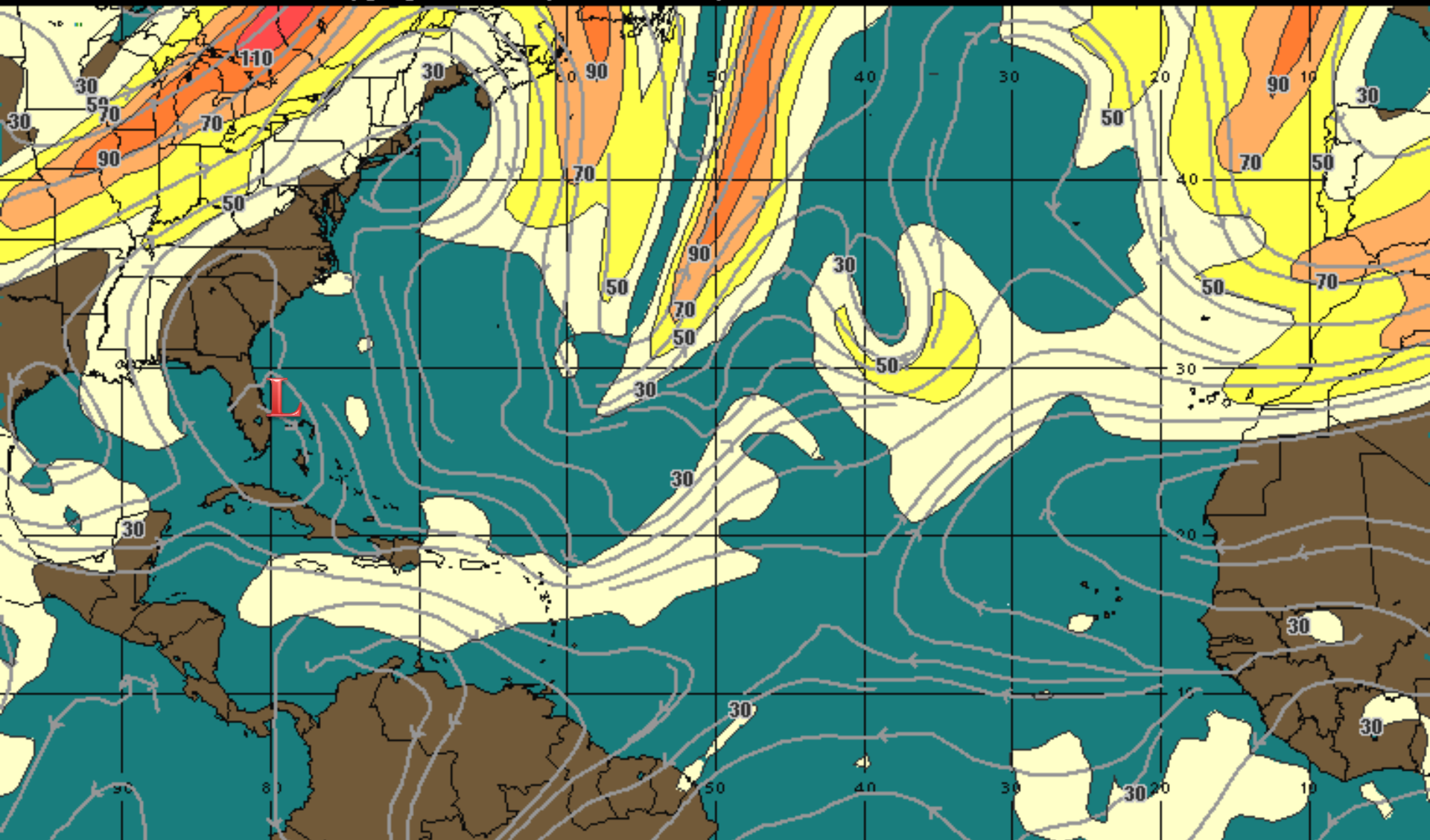
200Mb Wind Speed / Streamline Analysis
Valid 0000 UTC Mon 30-Jun-14

30 mph 50 70 90 110 130 150 +

WSI®

Forecast Wind Shear: 48 hours

00:00 02-JUL-2014 GMT ©Copyright WSI Corporation <http://www.wsi.com>



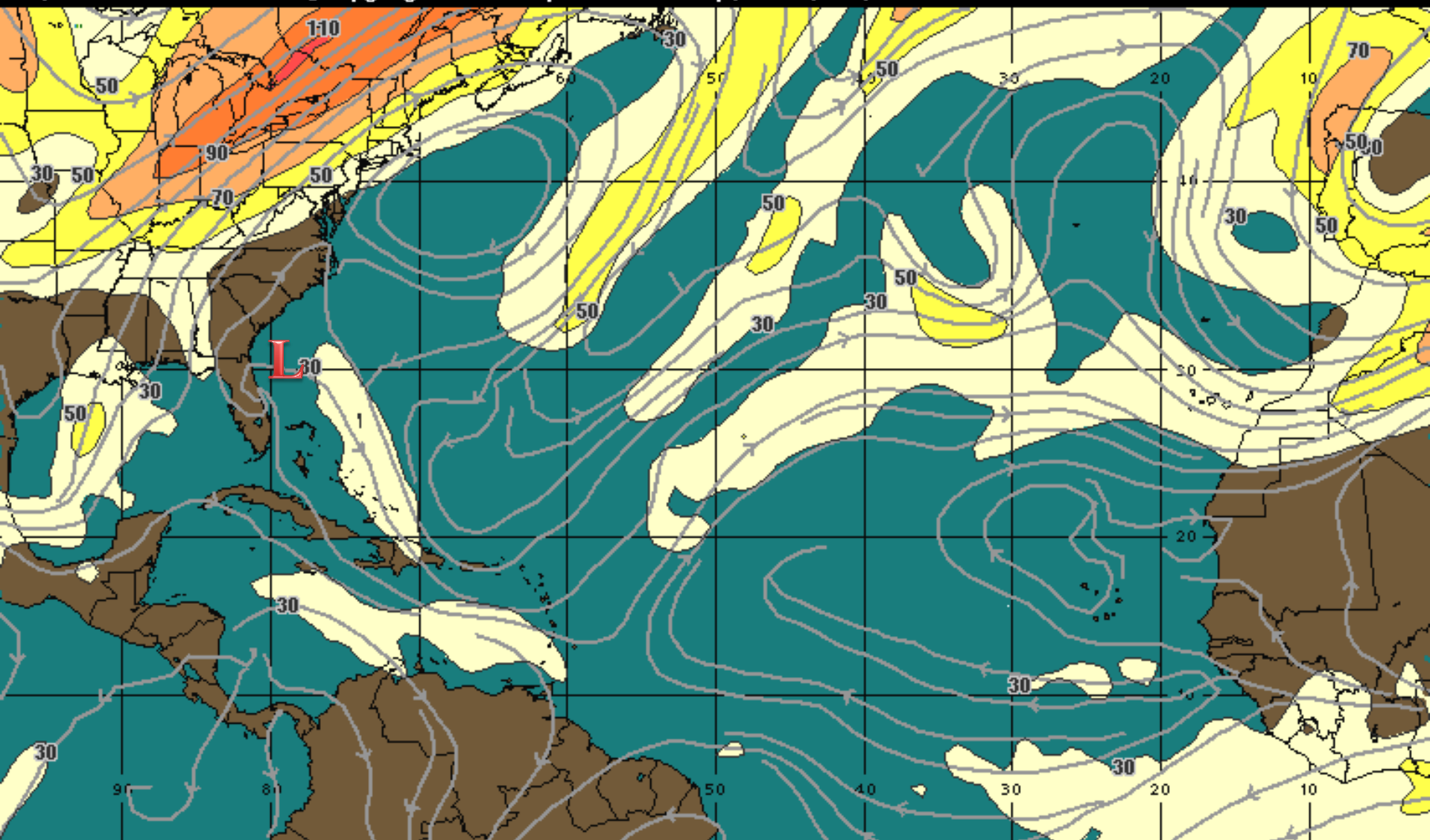
200Mb Wind Speed / Streamline Forecast
Valid 0000 UTC Wed 02-Jul-14

30 mph 50 70 90 110 130 150 +

WSI®

Forecast Wind Shear: 72 hours

00:00 03-JUL-2014 GMT ©Copyright WSI Corporation <http://www.wsi.com>

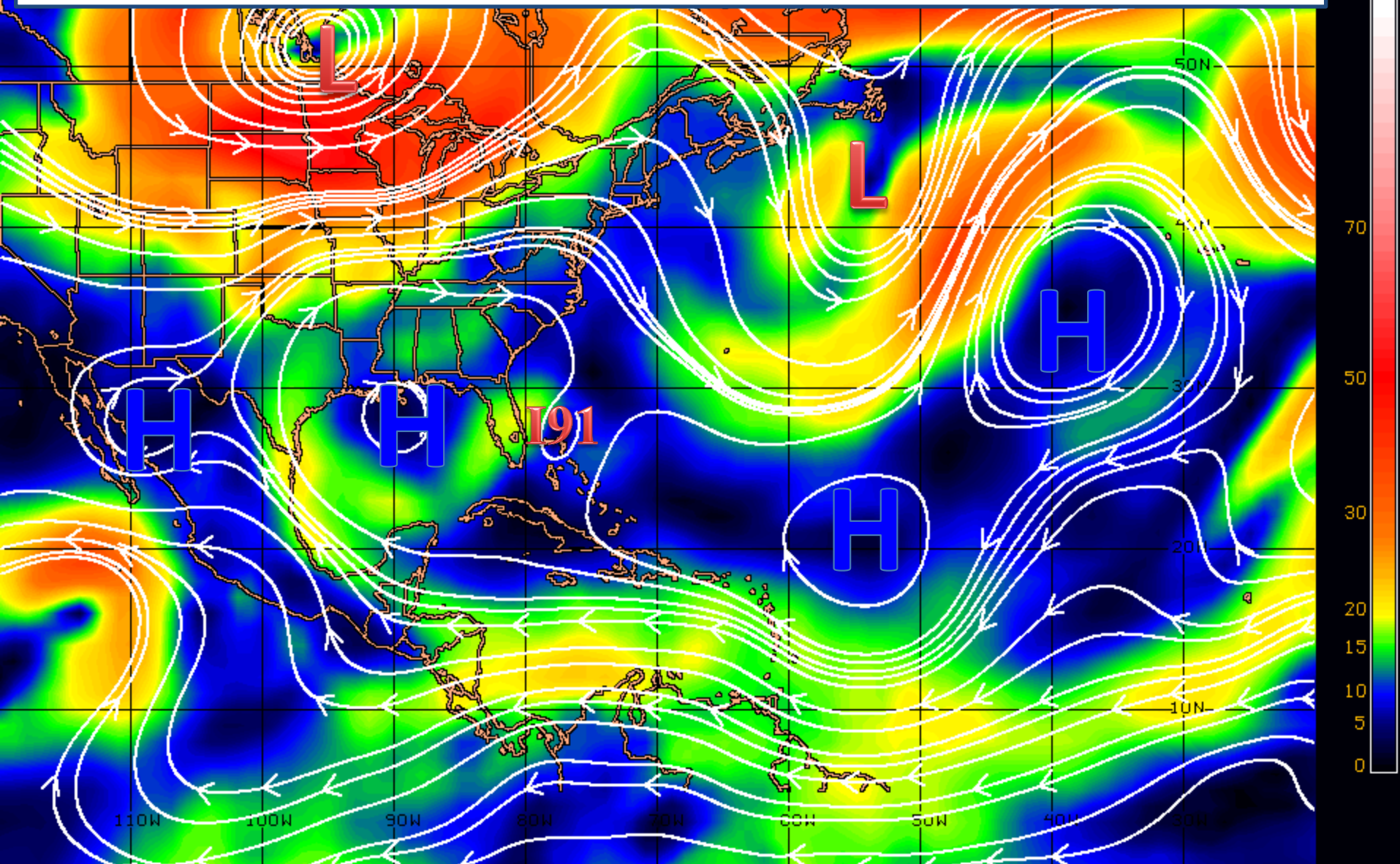


200Mb Wind Speed / Streamline Forecast
Valid 0000 UTC Thu 03-Jul-14

30 mph 50 70 90 110 130 150 +

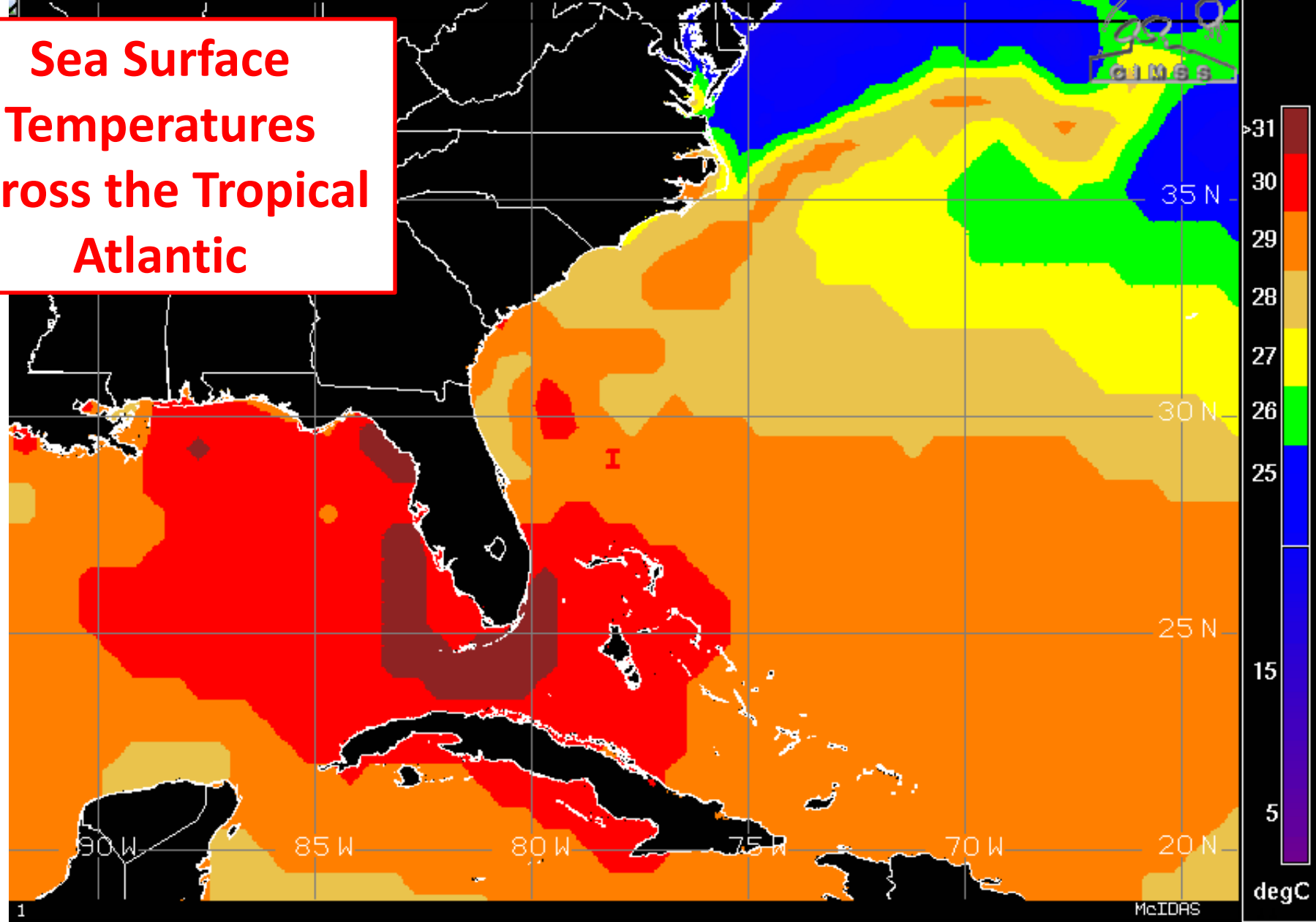
WSI®

Steering Currents



CIMSS ENV STEERING PRODUCT: 500-850 HPA LAYER (FOR TC MSLP RANGE: 990-999 HPA) 0900 UTC 30JUN14

Sea Surface Temperatures across the Tropical Atlantic

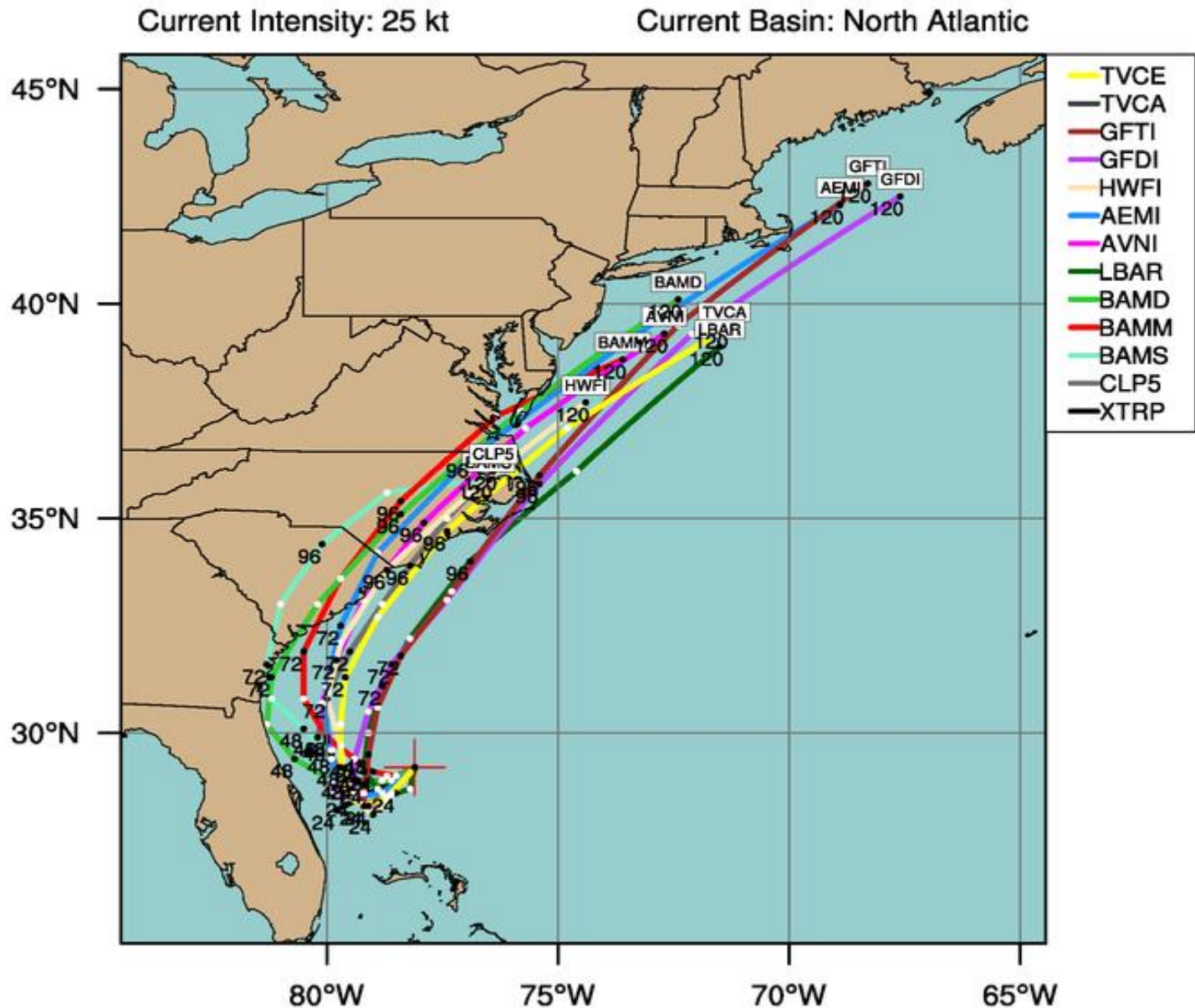


LDN/NAVE
TROPICAL DEPR
TROPICAL STRM
CATEGORY 1
CATEGORY 2
CATEGORY 3
CATEGORY 4
CATEGORY 5

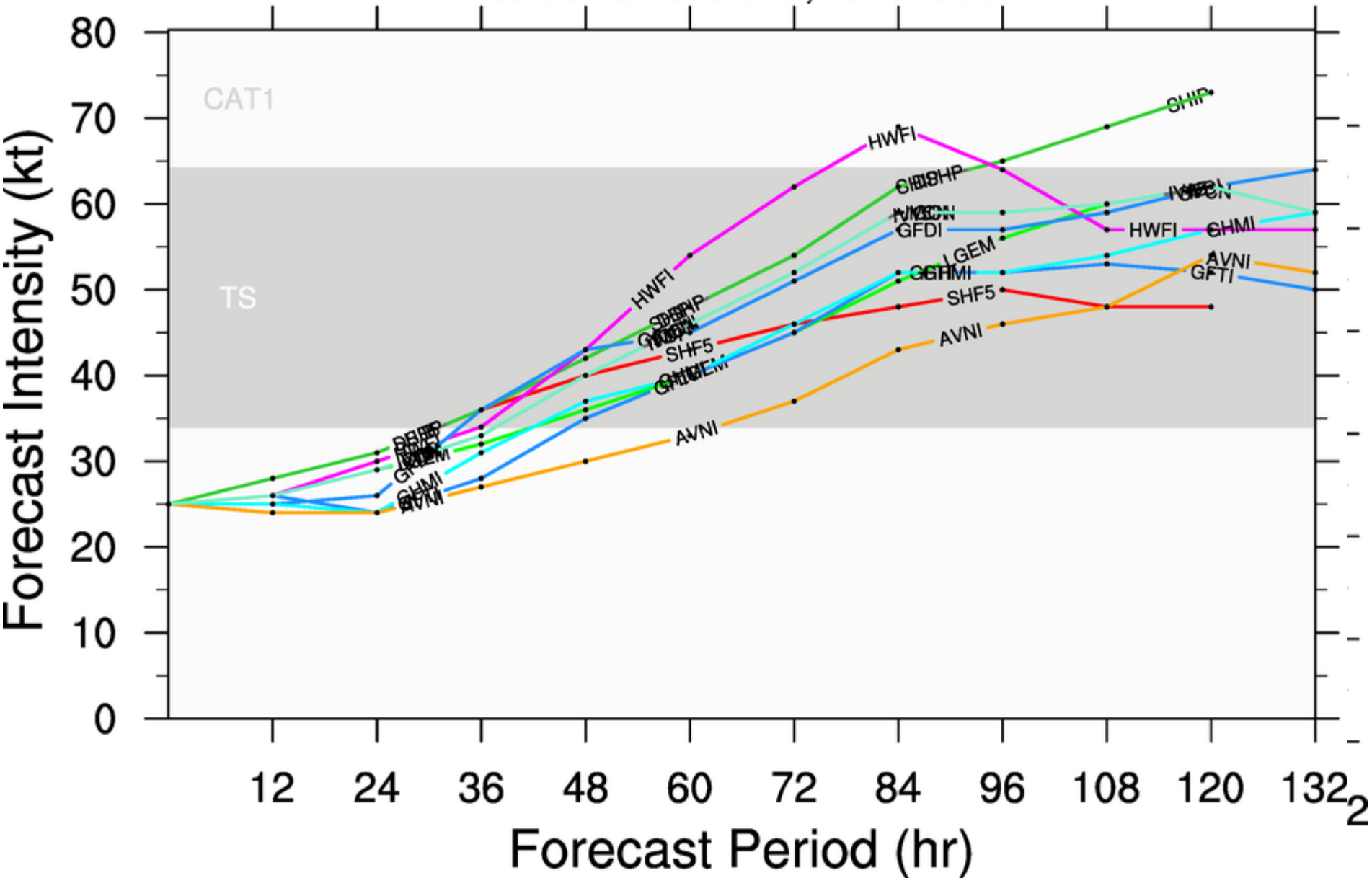
I - Invest Area
L - Tropical Depression
6 - Tropical Storm
6 - Hurricane/Typhoon

LOW INVEST (AL91)

Early-cycle track guidance initialized at 0600 UTC, 30 June 2014



LOW INVEST (AL91)
Early-cycle intensity guidance
initialized at 0600 UTC, 30 June 2014



5 DAY RAINFALL FORECAST

