



TROPICAL UPDATE



9:00 AM EDT

Monday, September 6, 2021

Major Hurricane Larry &

Invest 91L - Caribbean Low (30%)

This update is intended for government and emergency response officials, and is provided for informational and situational awareness purposes only. Forecast conditions are subject to change based on a variety of environmental factors. For additional information, or for any life safety concerns with an active weather event please contact your County Emergency Management or Public Safety Office, local National Weather Service forecast office, or visit the National Hurricane Center website at www.hurricanes.gov.



Atlantic Basin Satellite Image

Chance of development: — None — Low — Medium — High





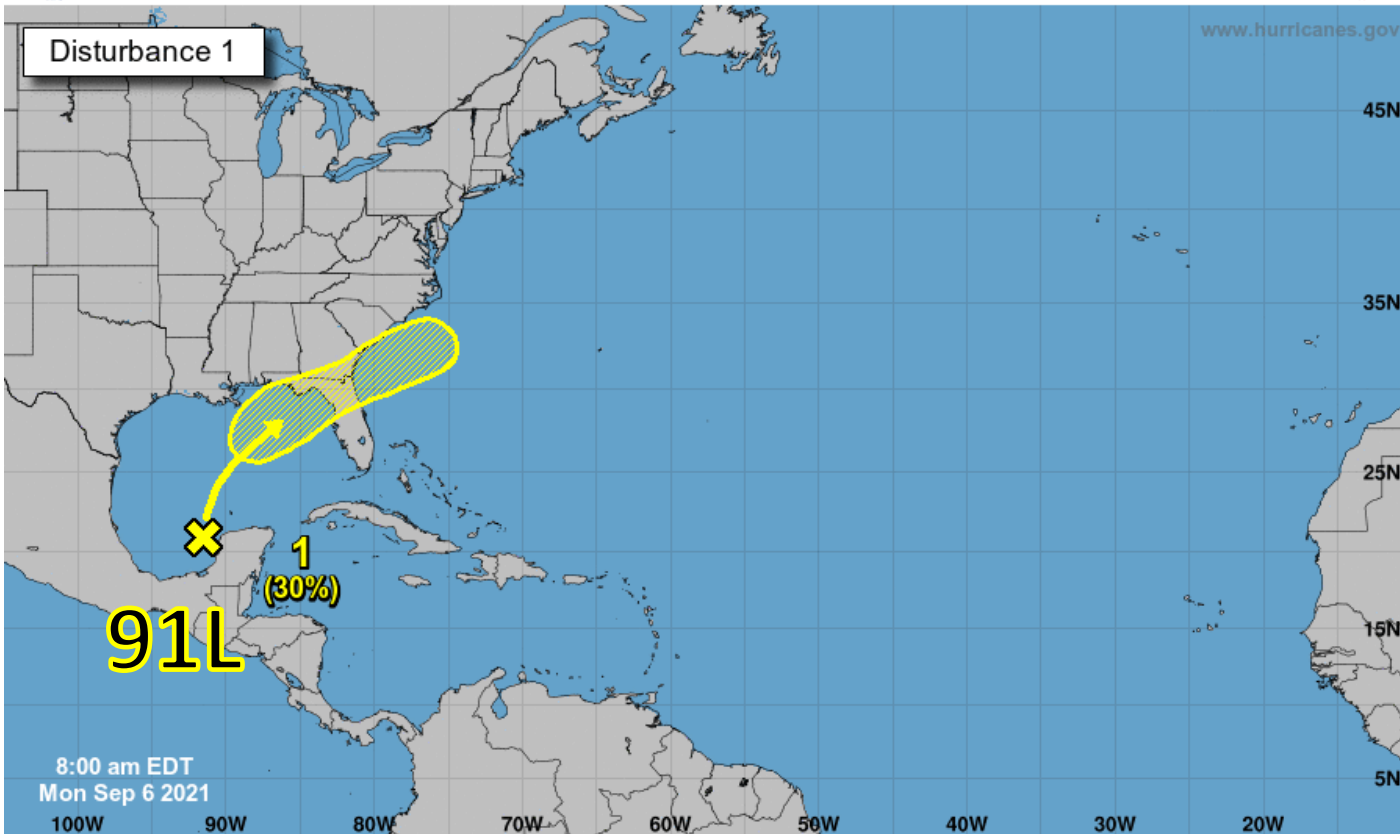
Tropical Weather Outlook

Possible Areas of Development During the Next 5 Days ([LINK](#)) – Invest 91L



Five-Day Graphical Tropical Weather Outlook

National Hurricane Center Miami, Florida



Current Disturbances and Five-Day Cyclone Formation Chance:
 Tropical or Sub-Tropical Cyclone:
 < 40% 40-60% > 60%
 Depression Storm Hurricane
 Post-Tropical Cyclone or Remnants

Disorganized showers and thunderstorms over the northern portion of the Yucatan Peninsula and south-central Gulf of Mexico are associated with a surface trough and an upper-level disturbance. The system is forecast to move slowly northward or northeastward over the central and then northeastern Gulf of Mexico, likely reaching the northern Gulf coast in a few days. Although upper-level winds are currently unfavorable for development to occur, they are expected to become marginally conducive for tropical cyclone formation in a couple of days. The disturbance is then expected to cross the southeastern United States beginning midweek, and some development will be possible once it emerges over the Atlantic waters late this week.

- * Formation chance through 48 hours...low...near 0%
- * Formation chance through 5 days...low...30%



Current Satellite Image and Track Guidance

Invest 91L

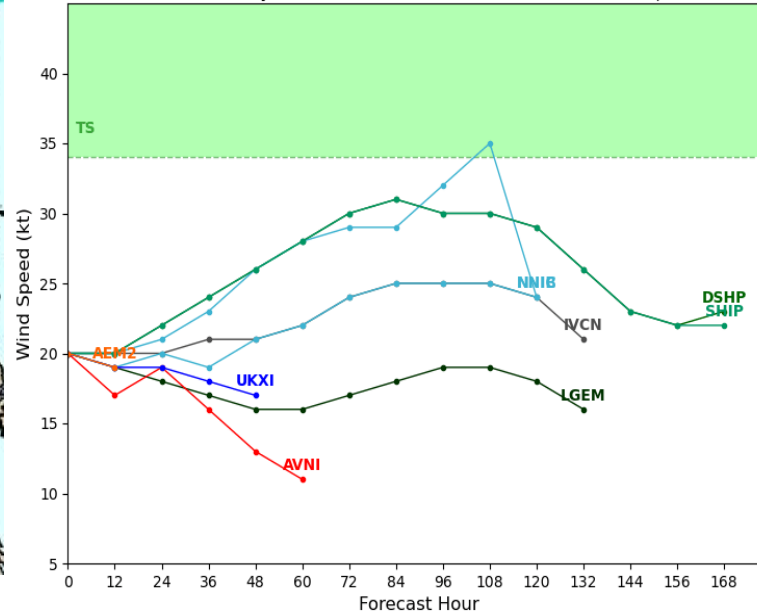
Computer models are in good agreement that little to no development of 91L is forecast to occur within the next 48 hours. Some slow development is possible as it moves northward over the Gulf of Mexico mid-week, or into the southwest Atlantic.

Track forecasts have come into better agreement that the system will move northeast across portions of North Florida on Wednesday and Thursday.

Invest 91L Model Intensity Guidance

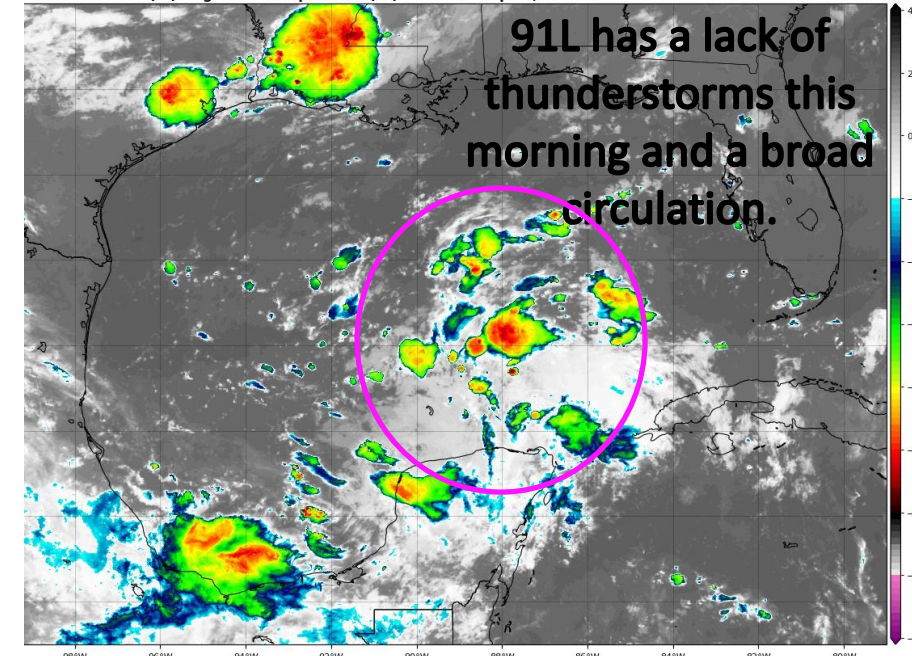
Initialized at 06z Sep 06 2021

Levi Cowan - tropicaltidbits.com



5-16 Channel 13 (IR) Brightness Temperature (°C) at 12:25Z Sep 06, 2021

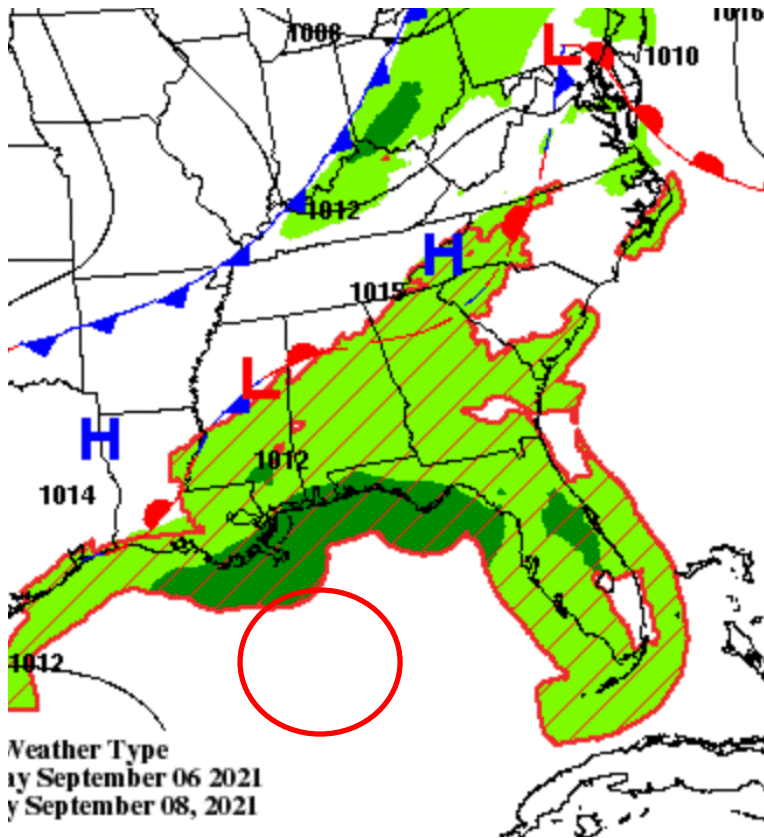
TROPICALTIDBITS.COM



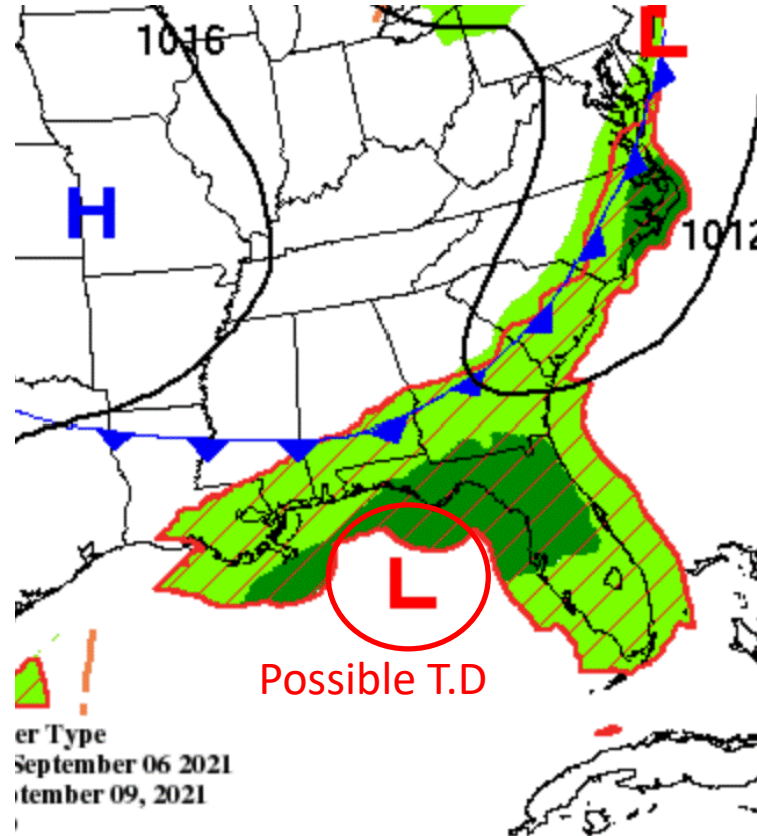


Forecast Mid-Week

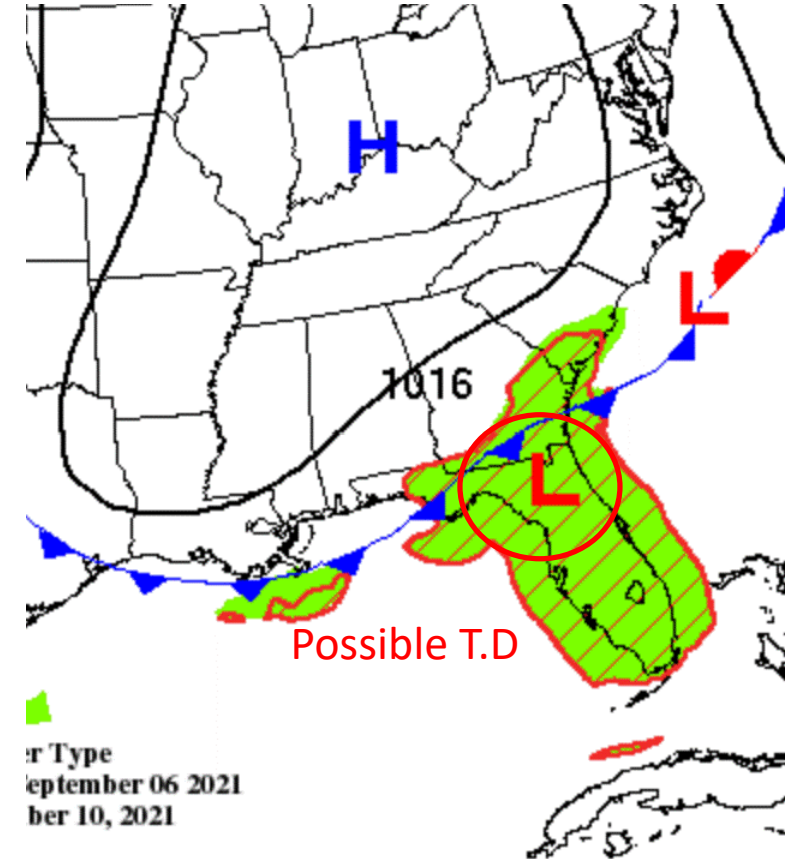
Surface Maps from the Weather Prediction Center



Wednesday



Thursday



Friday

Invest 91L will bring tropical moisture northward regardless if it develops or not. When combined with an approaching cold front, heavy rainfall is forecast for North Florida mid-week.



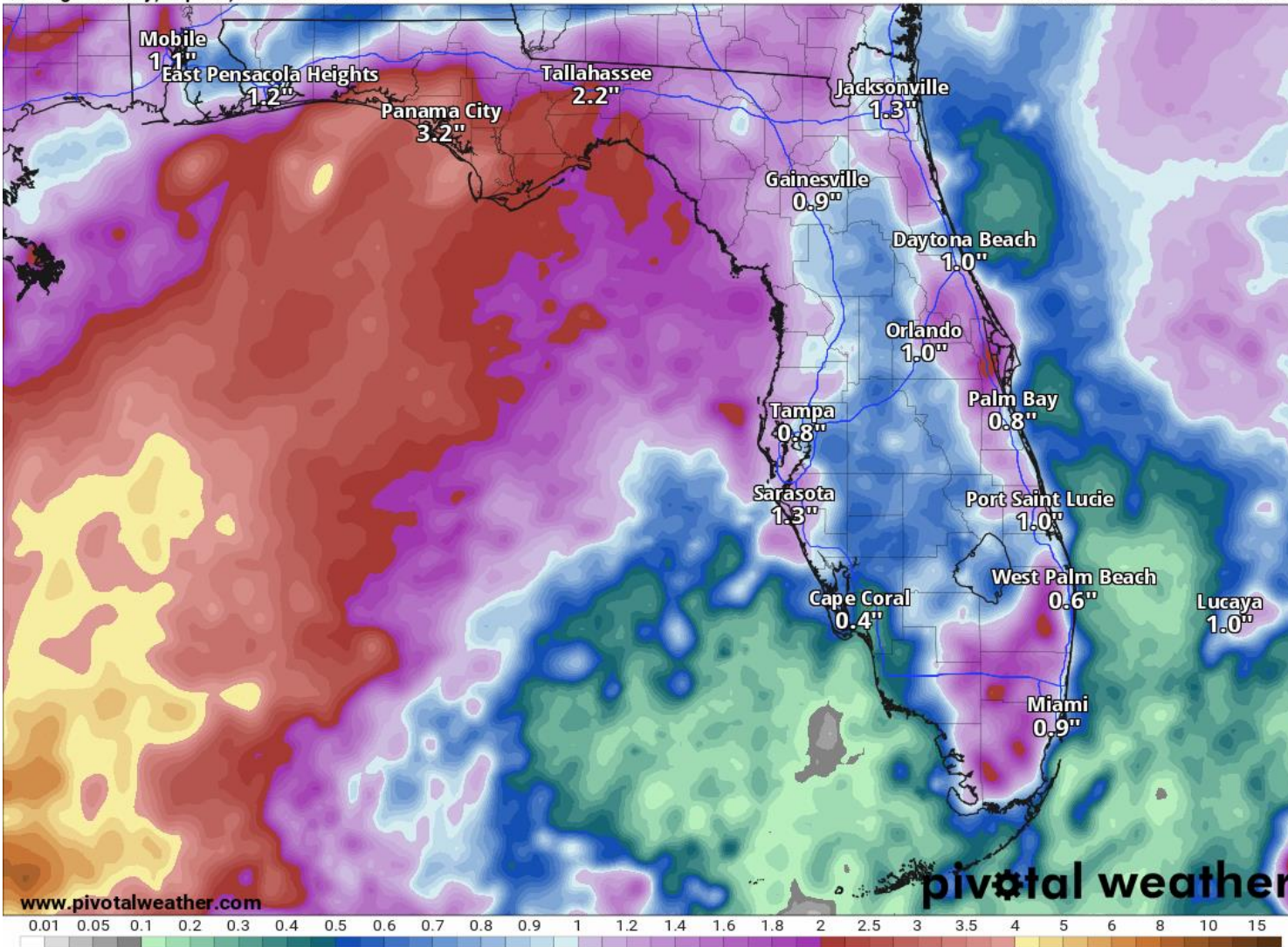
Rainfall Totals Next 5 Days

Ending 8 AM ET Saturday

120-Hour Precipitation (in)

Ending Saturday, Sep. 11, 2021 at 8 a.m. EDT

Init: Mon 2021-09-06 12z WPC



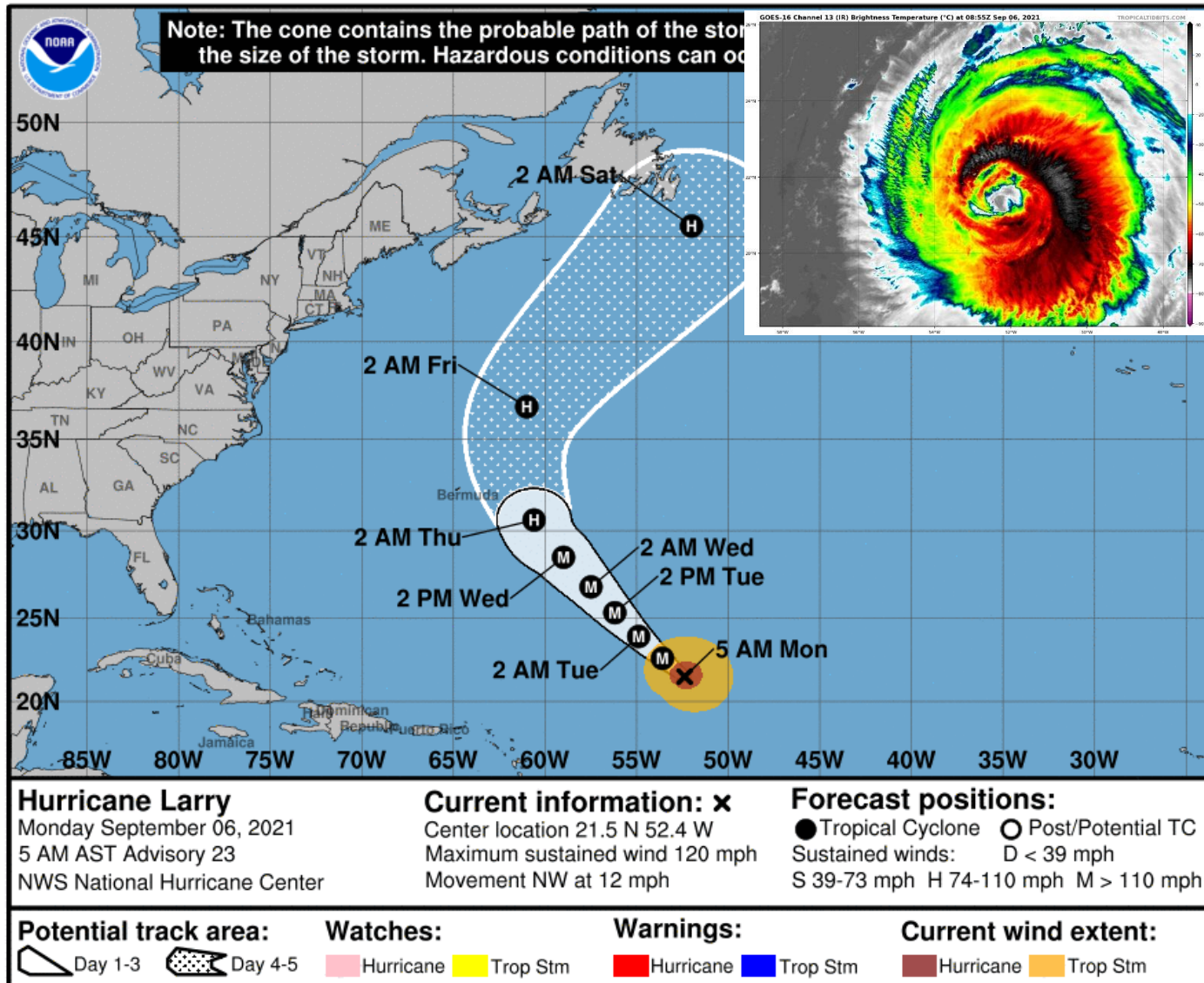
Through the week, a widespread 2-4" of rain is forecast for the Florida Panhandle as tropical moisture from 91L moves into the region and a cold front approaches from the North. **Locally higher totals of 6" are possible.**

Pockets of heavy rainfall are also possible over the next couple of days along the Treasure Coast and in Southeast Florida.



Official Forecast Track

From the National Hurricane Center – Major Hurricane Larry



- **Location:** 1,000 miles southeast of Bermuda
- **Maximum sustained winds:** 120 mph (Category 3)
- **Movement:** NW at 12 mph
- **Forecast:** Larry will continue northwest through Wednesday at or near Major Hurricane intensity. As Larry turns northward on Thursday it may begin to weaken as it passes near Bermuda and turns northeast over colder waters near Atlantic Canada.
- This system poses no direct threat to Florida, but swells from Larry will arrive at Atlantic beaches over the next couple of days.



Forecast Wave Heights

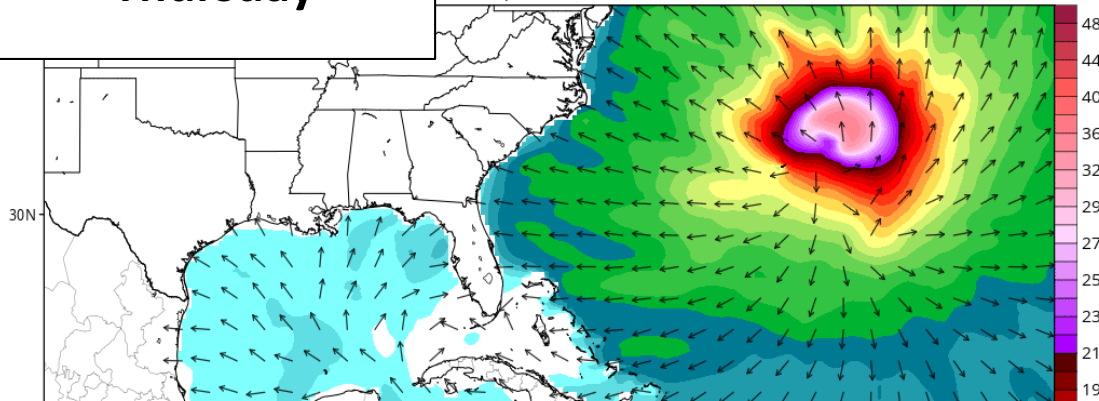
Late Week

Thursday

Combined Wind-Waves and Swells

18z Thu, Sep 09 2021

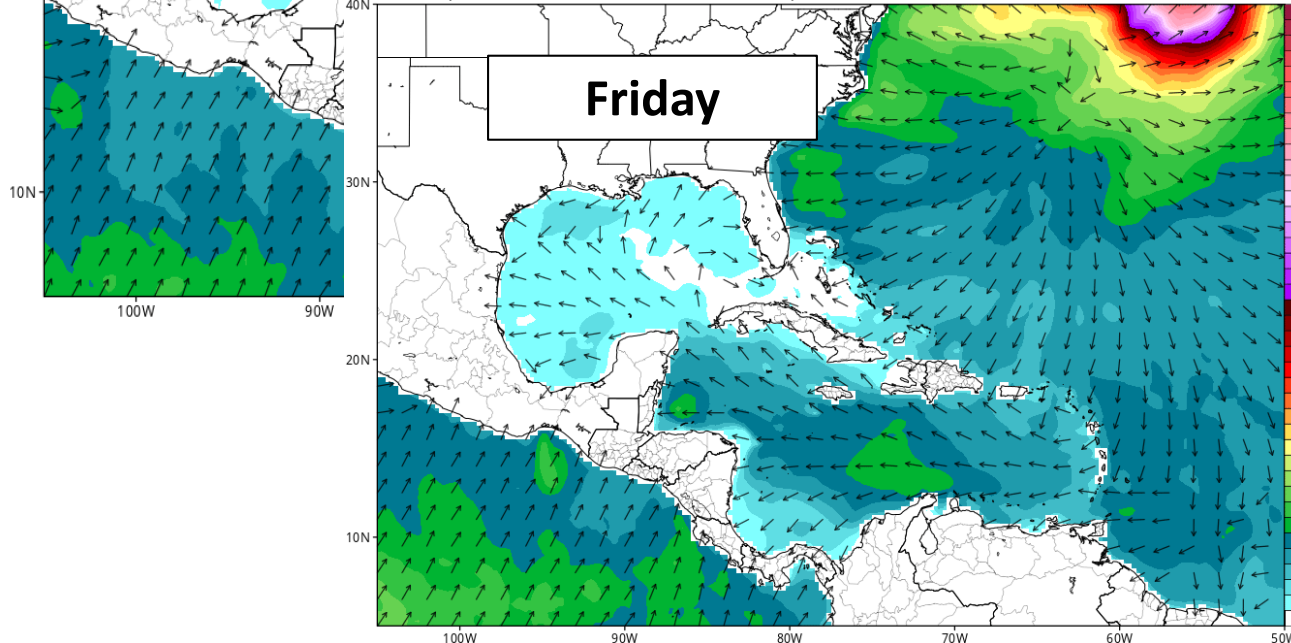
TROPICALTIDBITS.COM



GFS Significant Height (ft) and Direction of Combined Wind-Waves and Swells

Init: 06z Sep 06 2021 Forecast Hour: [108] valid at 18z Fri, Sep 10 2021

TROPICALTIDBITS.COM



Friday

Hurricane Larry:

The only threat to Florida will be the potential for ocean swells increasing the rip current risk along the East Coast beginning Tuesday, with increased waves noticeable by Wednesday and Thursday. The rip current risk is expected to continue through next weekend.

Invest 91L:

Regardless of development, portions of the northern Gulf Coast may experience elevated ocean swells and an increased risk of rip currents mid-week.



Overall Summary

Hurricane Larry:

- At 5:00 am EDT Monday, the center of Larry was located about 1,000 miles southeast of Bermuda, and moving to the northwest at 12 mph.
- A northwest motion is expected during the next few days, followed by a turn to the north later in the week near Bermuda.
- Maximum sustained winds are at 120 mph, making Larry a Category 3 hurricane.
- Atmospheric and oceanic conditions are supportive for the storm during the next couple of days, and Larry is forecast to remain a major hurricane.
- It will weaken and transition to a non-tropical cyclone over the colder waters of the North Atlantic near Atlantic Canada this weekend.

Gulf of Mexico Low (Invest 91L):

- A low pressure disturbance, identified as Invest 91L, continues to produce disorganized shower and thunderstorm activity over portions of the Yucatan Peninsula and Gulf of Mexico.
- 91L is forecast to move northward over the central Gulf of Mexico today and tomorrow, followed by a northeastward motion over the northern Gulf of Mexico through the middle of this week.
- Upper-level winds and dry air should limit development through Tuesday; however, atmospheric conditions could become marginally conducive for some gradual development Wednesday or Thursday as the system nears North Florida.
- Thus, the National Hurricane Center is currently giving this system a near 0% chance of development within the next 48 hours, but a 30% (low) chance of development over the next 3-5 days.

Florida Outlook:

- Hurricane Larry poses no direct threat to Florida, but large ocean swells from the hurricane could arrive at Atlantic beaches over the next few days and increase the rip current threat for much of the week.
- Invest 91L in the Gulf of Mexico poses no threat to Florida over the next 48 hours *but should be monitored over the next few days*. Regardless of development, increased rain chances are expected across North Florida mid-week along with an increased risk of rip currents.

The next briefing packet will be issued Tuesday morning. For the latest information, please visit the National Hurricane Center website at

www.hurricanes.gov.



TROPICAL UPDATE



Created by:

Michael Spagnolo, Deputy State Meteorologist

Michael.Spagnolo@em.myflorida.com

State Meteorological Support Unit

Florida Division of Emergency Management

Users wishing to subscribe (approval pending) to this distribution list, register at:

https://public.govdelivery.com/accounts/FLDEM/subscriber/new?topic_id=SERT_Met_Tropics.

Other reports available for subscription are available at:

<https://public.govdelivery.com/accounts/FLDEM/subscriber/new?preferences=true>