



TROPICAL UPDATE



9:00 AM EDT

Wednesday, September 1, 2021

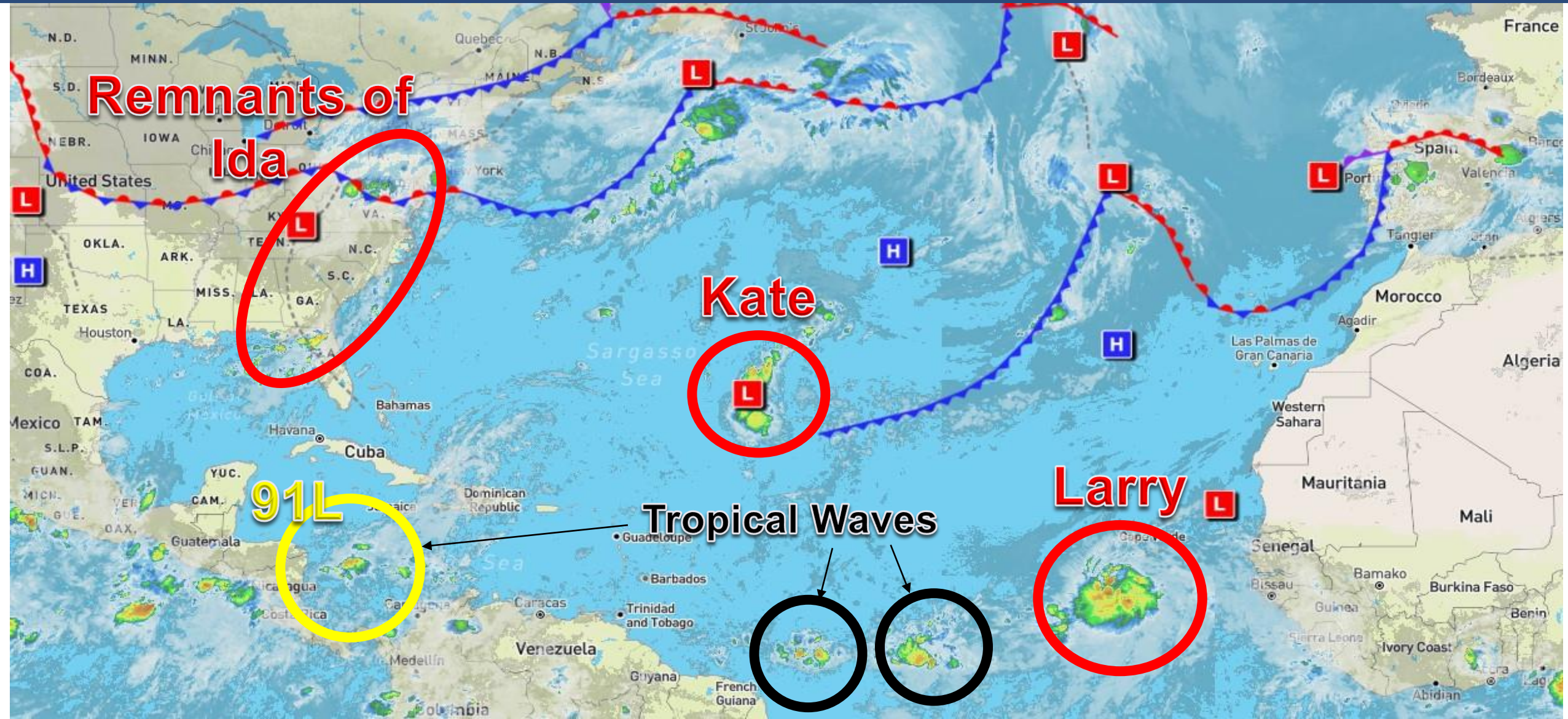
Tropical Depression Ida & Heavy Rain Threat Today,
Tropical Depression Kate, Tropical Storm Larry, &
Invest 91L - Caribbean Low (30%)

This update is intended for government and emergency response officials, and is provided for informational and situational awareness purposes only. Forecast conditions are subject to change based on a variety of environmental factors. For additional information, or for any life safety concerns with an active weather event please contact your County Emergency Management or Public Safety Office, local National Weather Service forecast office, or visit the National Hurricane Center website at www.hurricanes.gov.



Atlantic Basin Satellite Image

Chance of development: — None — Low — Medium — High

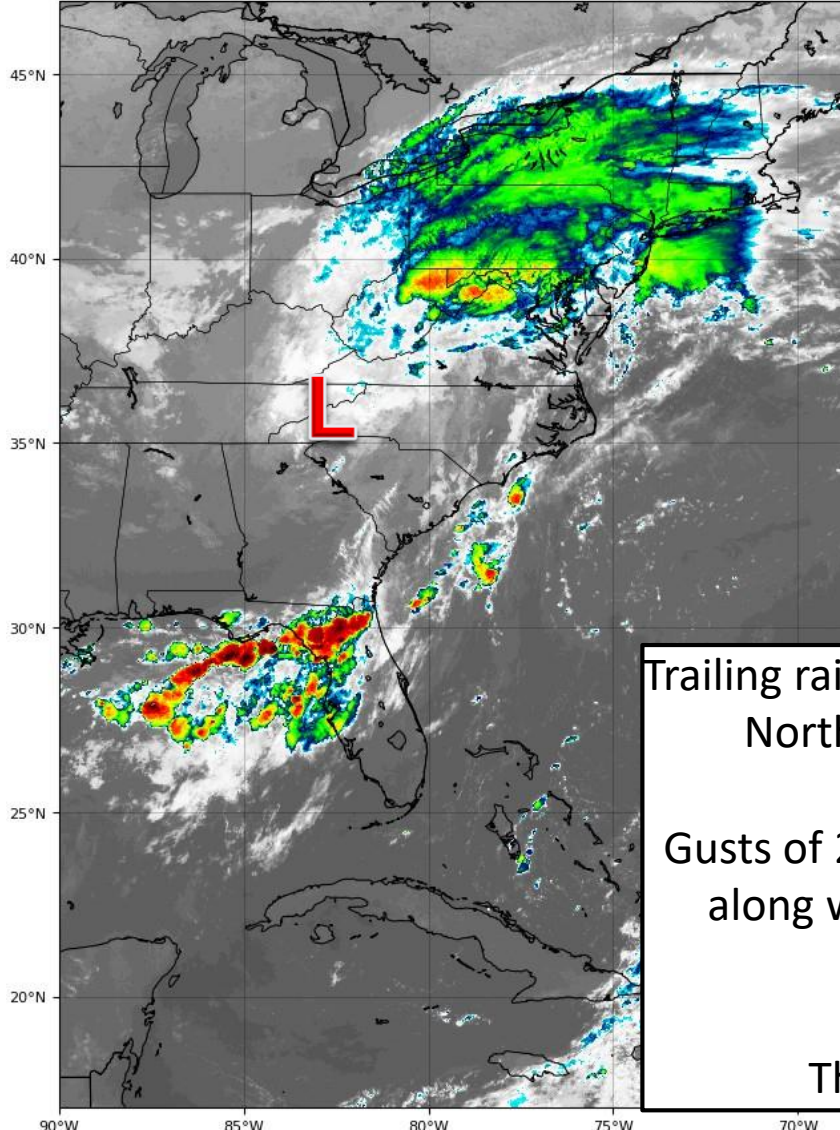




Current Satellite & Radar

As of 8:30 AM ET

GOES-16 Channel 13 (IR) Brightness Temperature (°C) at 12:15



© 2021 WeatherTAP.com - 09/01/2021 9:24 AM EDT (13:24 GMT)



Trailing rain bands from Ida continue to move across Northeast and West Central Florida today.

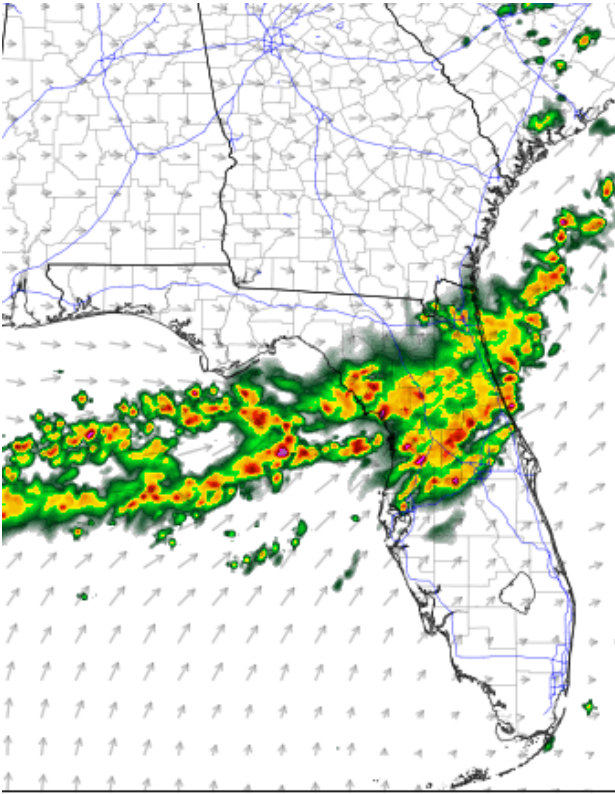
Gusts of 20-45 mph are possible in the rain bands, along with the threat for flash flooding/heavy rainfall.

The tornado threat has diminished.

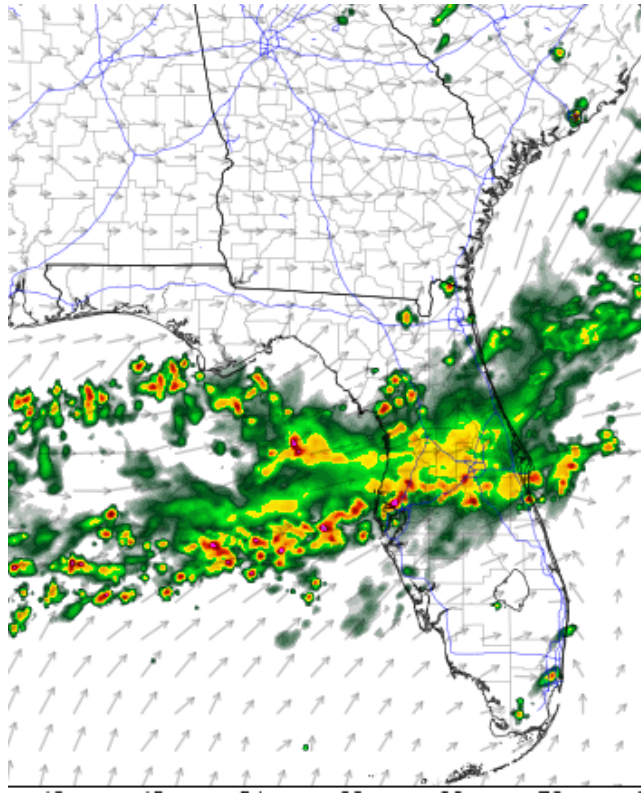


Model Forecast Radar

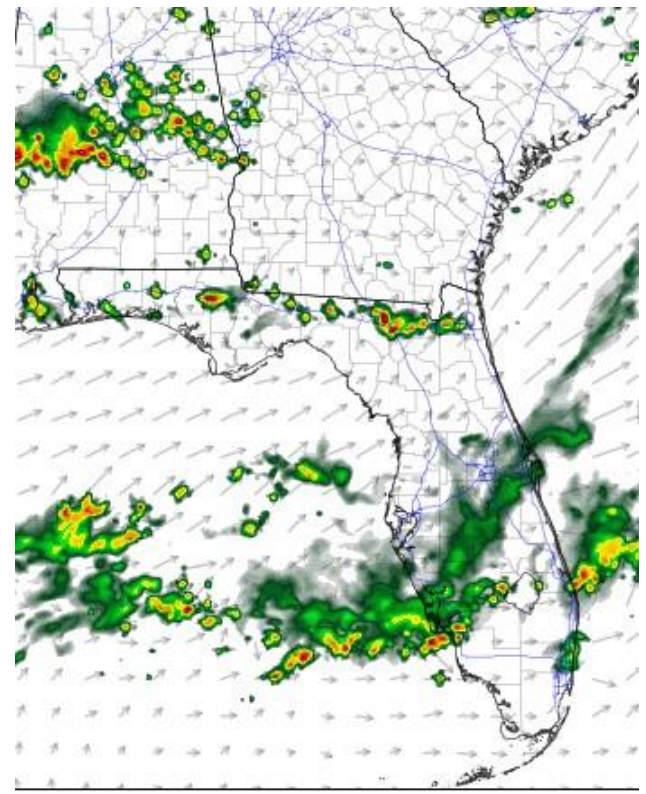
*****Only Model Guidance – Time & Position Will Vary*****



11am ET / 10am CT



3pm ET / 2 pm CT



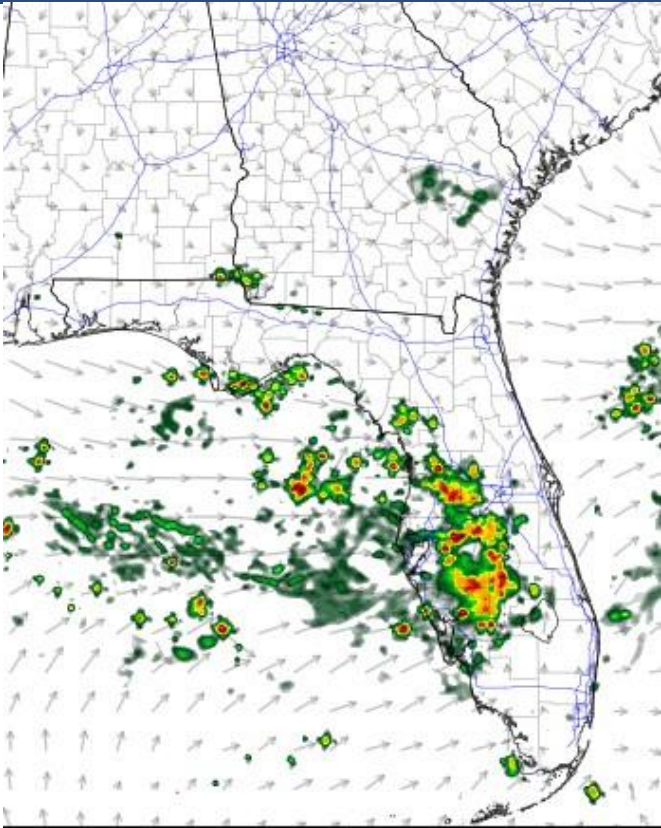
7pm ET / 6pm CT

Several rain bands will move through the Northeast and Central Florida throughout the day. If the rain bands train over the same area, flash flooding could result. Activity should begin to wane this evening, but some storms may continue overnight along the Nature Coast/Tampa Bay region.

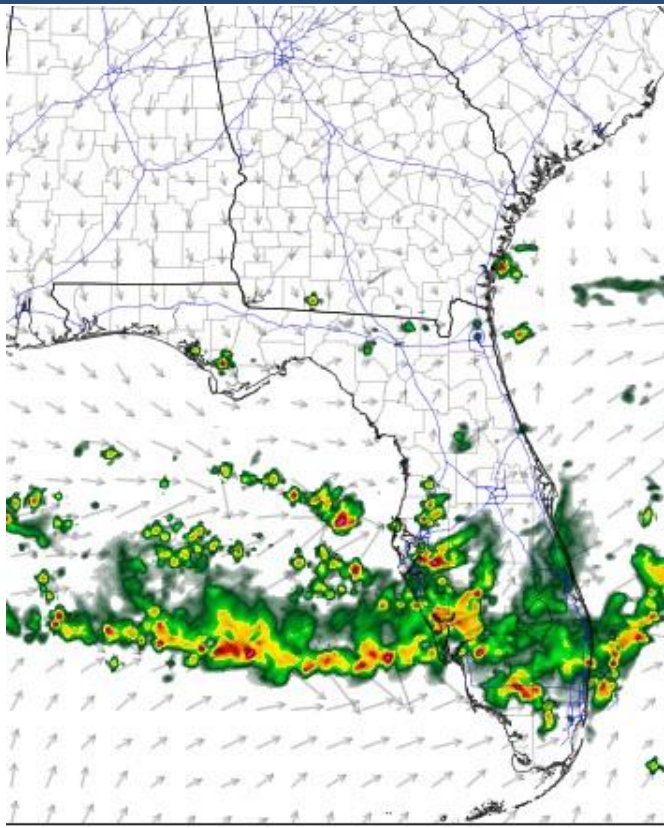


Model Forecast Radar

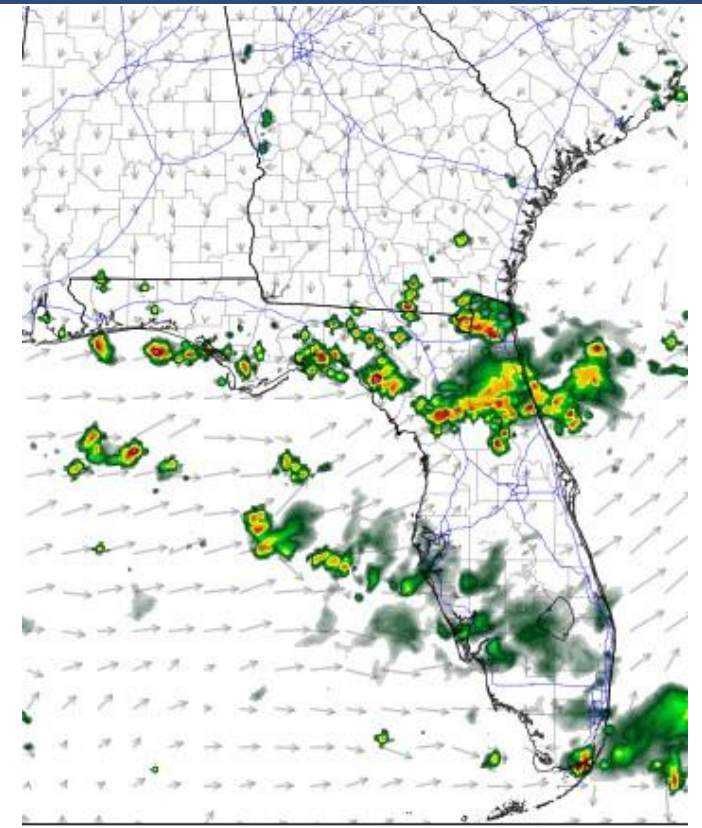
*****Only Model Guidance – Time & Position Will Vary*****



7am ET / 6am CT Thursday



2pm ET / 1pm CT



8pm ET / 7pm CT

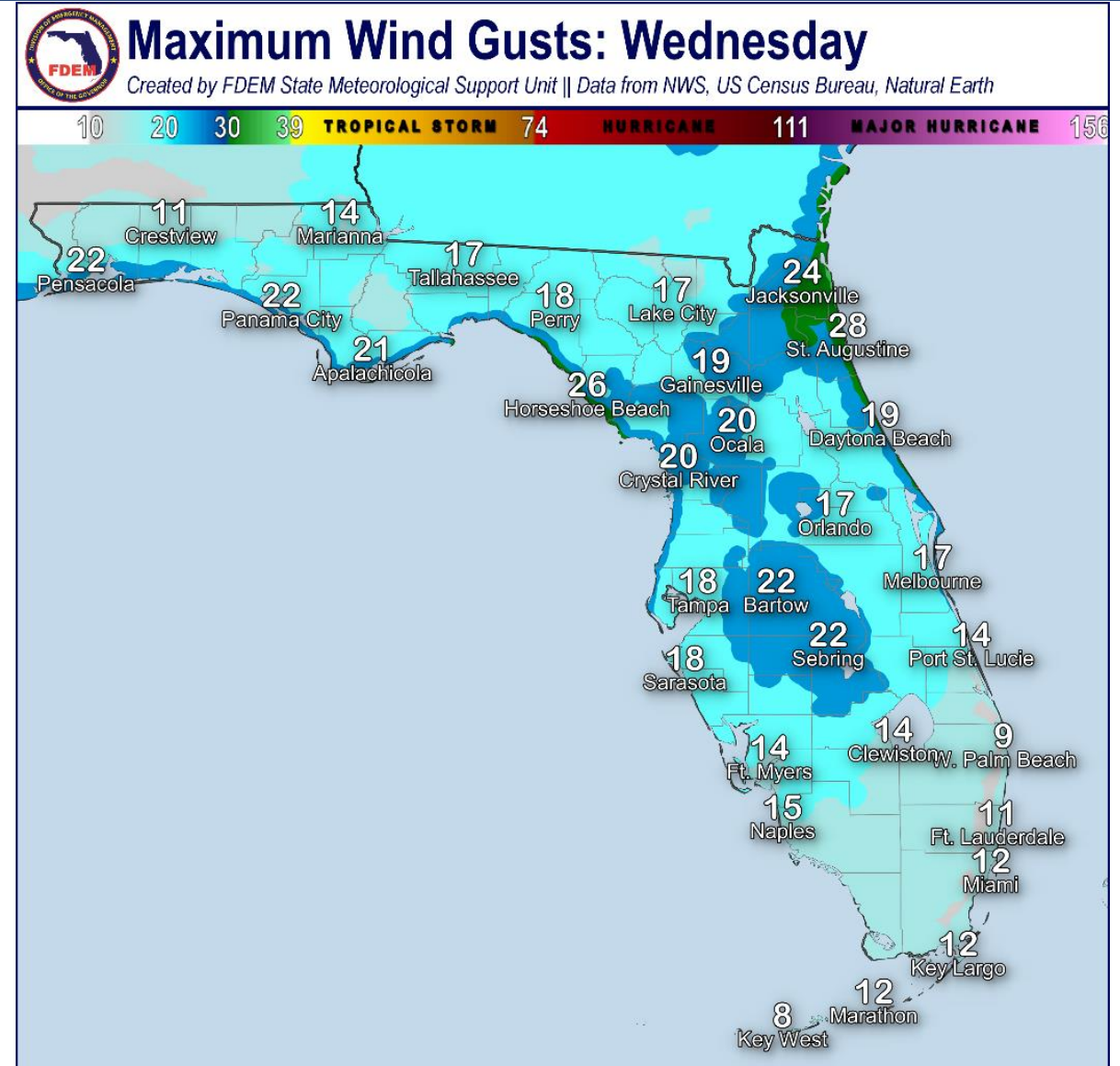
New rain bands will form early Thursday morning over the West Coast and shift south into South Florida later in the day. Additional summertime thunderstorms will develop in Northeast Florida.



NWS Forecast Wind Gusts

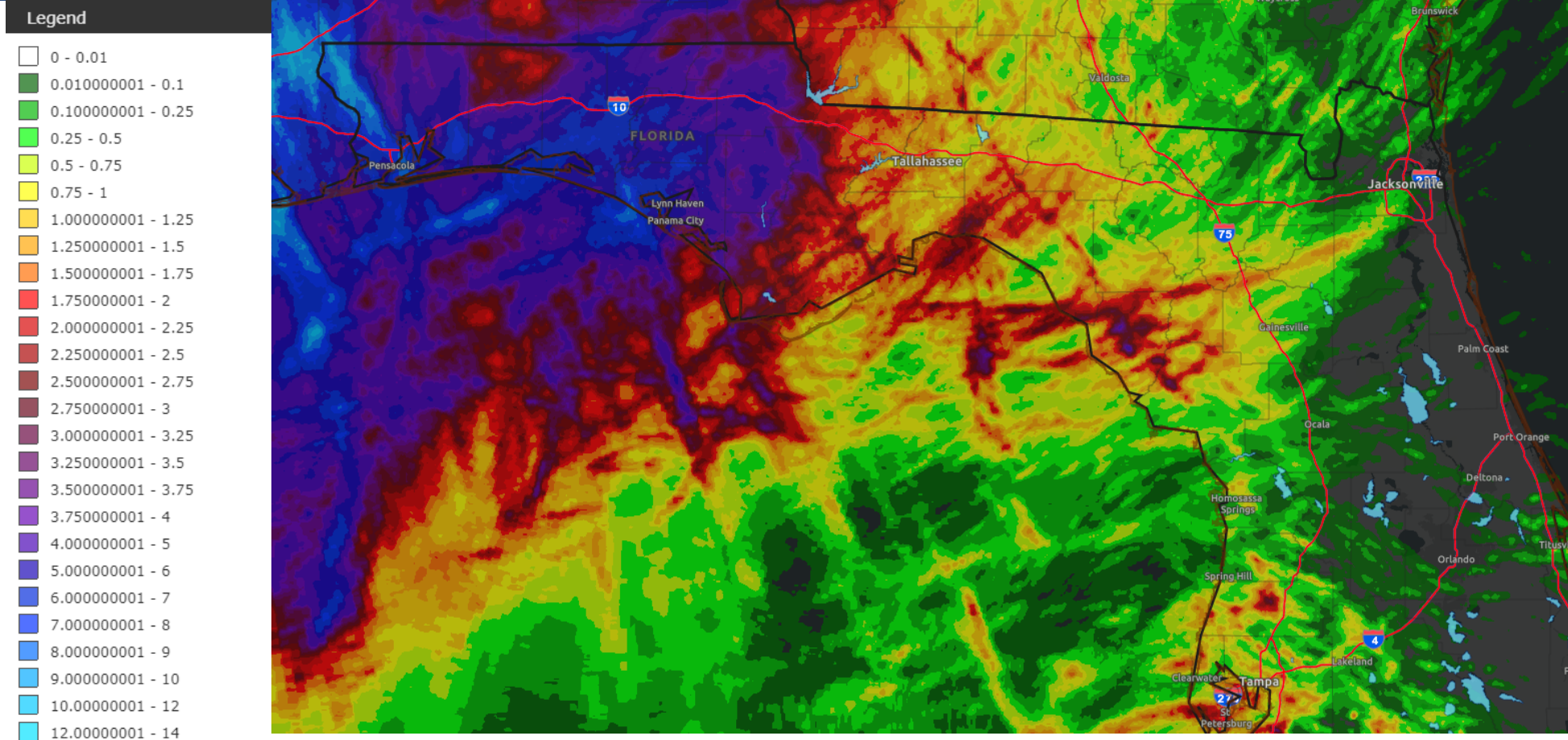
Exact wind gusts will vary in time, magnitude, and location

Gusty winds up to 30mph will continue along the Panhandle coast today and into Northeast and Central Florida. Higher values are possible in severe thunderstorms of 45-60 mph.





Observed Rainfall – Past 72 Hours



Rainfall totals of 4-6" have occurred across much of the Panhandle, with isolated totals as high as 8-10" estimated in Escambia County and Bay County. Rain amounts of 1-5" have occurred elsewhere in the Big Bend.

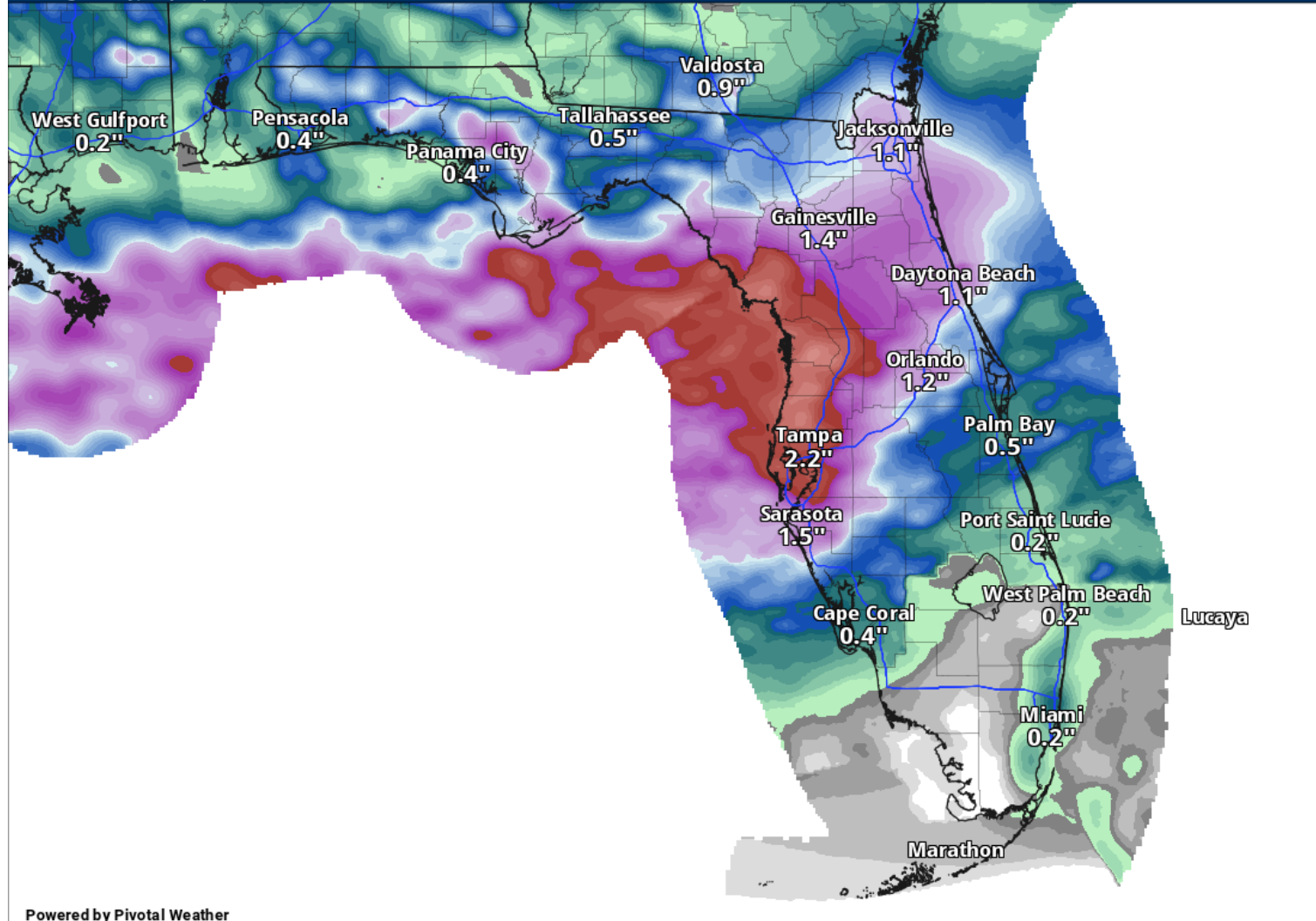


Rainfall Totals Next 2 Days

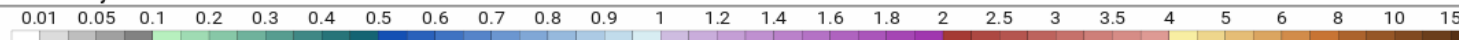
Ending 8 AM ET Friday

48-hr QPF Accumulation (in)
Ending Friday, Sep. 3, 2021 at 8 a.m. EDT

NWS NDFD - 09/01/2021 12z



Powered by Pivotal Weather



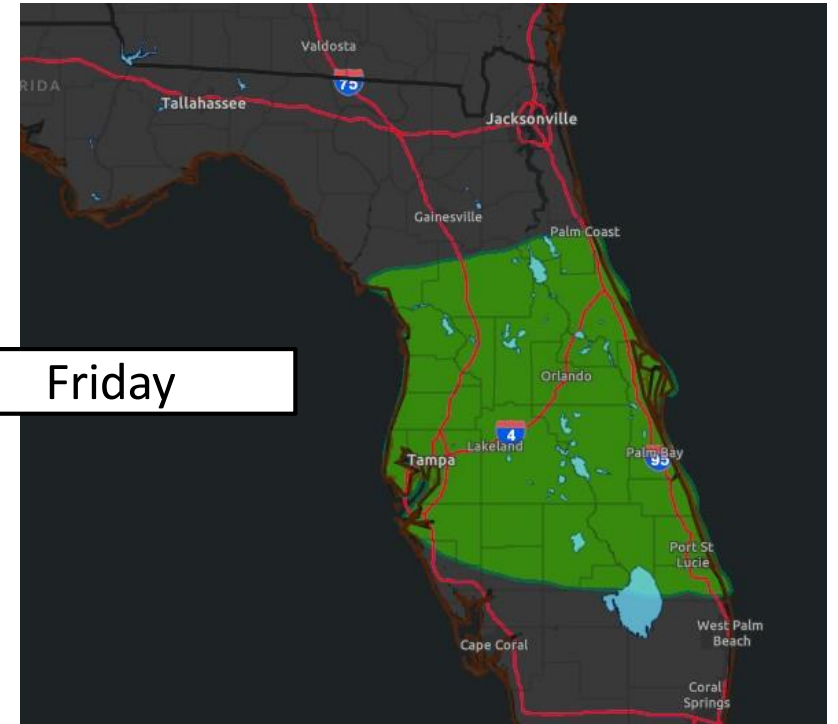
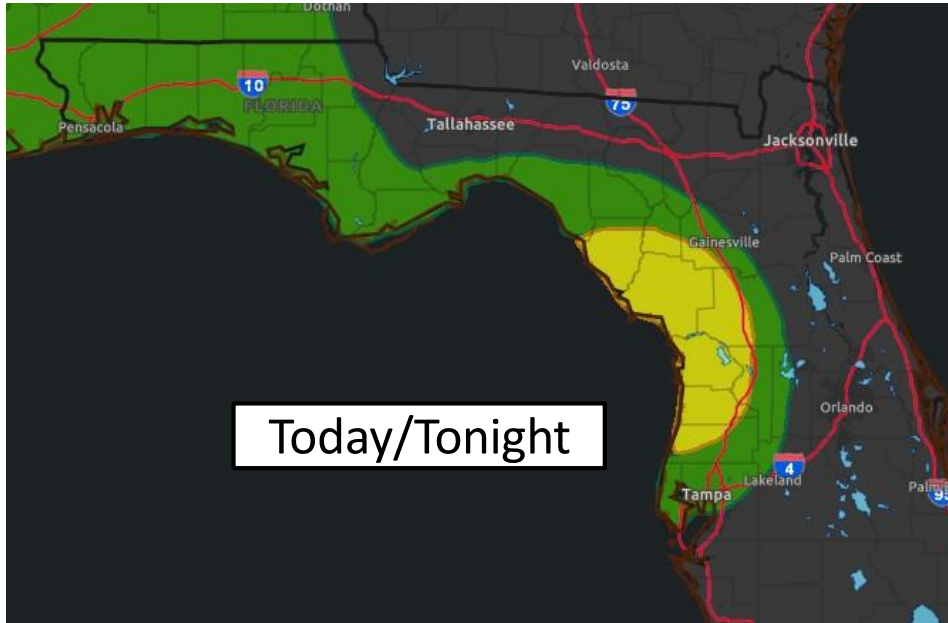
1-3" of rain is forecast for Northeast Florida and the Nature Coast/Tampa Bay region today and tomorrow. Localized totals of 4-6" are possible and could result in some flooding.

Rainfall totals in the Panhandle will be more hit or miss, but 1-2" is still possible in some areas.



Flash Flood Risks

From the Weather Prediction Center



MARGINAL (MRGL)	SLIGHT (SLGT)	MODERATE (MDT)	HIGH (HIGH)
Isolated flash floods possible	Scattered flash floods possible	Numerous flash floods likely	Widespread flash floods expected
Localized and primarily affecting places that can experience rapid runoff with heavy rainfall.	Mainly localized. Most vulnerable are urban areas, roads, small streams and washes. Isolated significant flash floods possible.	Numerous flash flooding events with significant events possible. Many streams may flood, potentially affecting larger rivers.	Severe, widespread flash flooding. Areas that don't normally experience flash flooding, could. Lives and property in greater danger.

Periods of heavy rain over the next 24 hours could result in flash flooding and urban street flooding in North and Central Florida today, but especially along the Nature Coast.

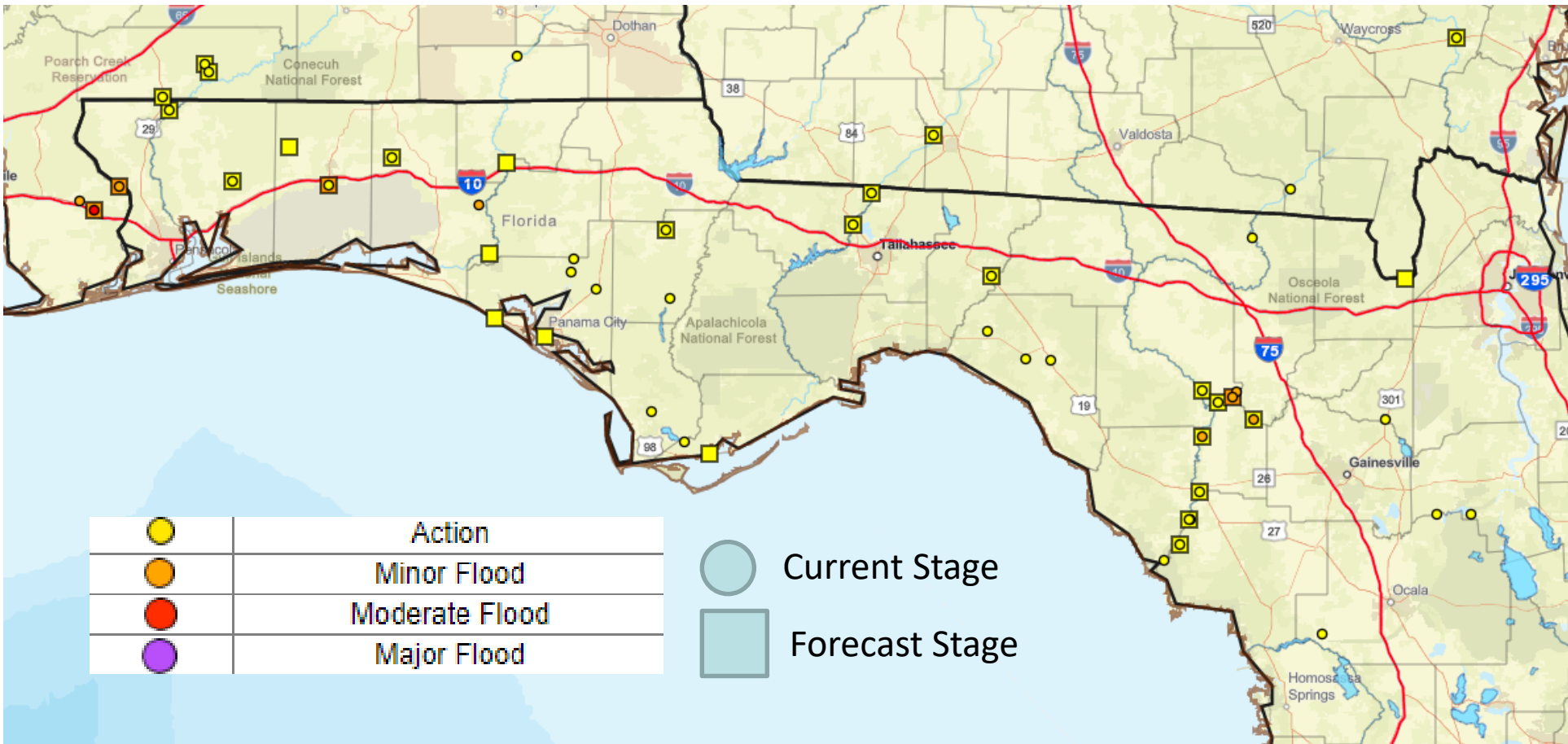
The flood risk drops on Thursday but a slow moving cold front will bring another round of heavy rainfall to Central Florida and a renewed flood threat.



Possible River Flooding

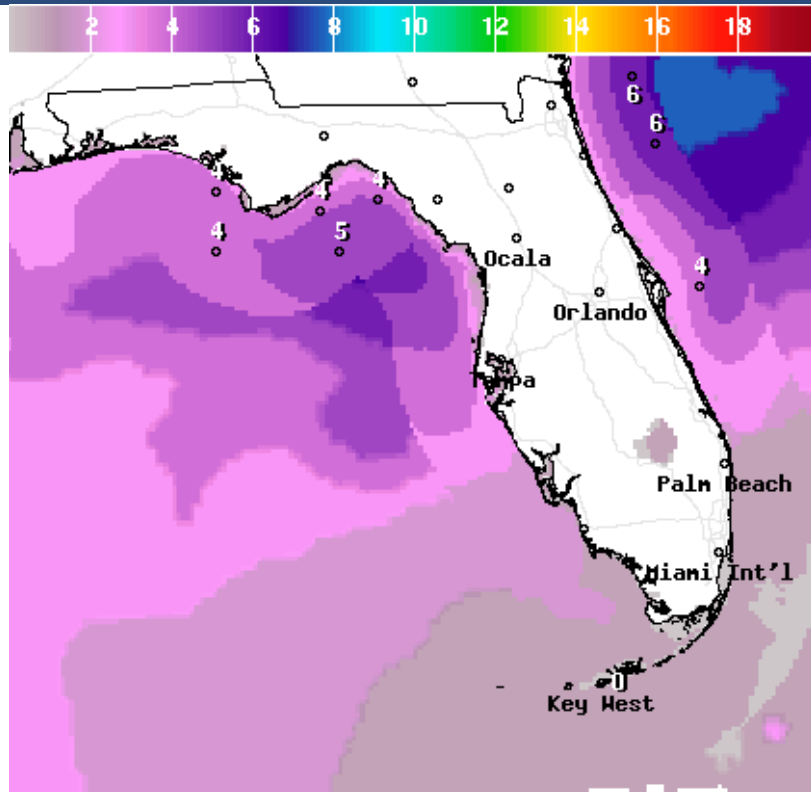
Forecast Highest Stage Based on Observed and Forecast Rainfall

Based on current forecasts, minor river flooding is possible on some Panhandle rivers and creeks in the wake of Hurricane Ida. Specific river forecasts are available [here](#).





Forecast Wave Heights



Wave Height(ft) Ending Wed Sep 01 2021 8PM EDT

(Thu Sep 02 2021 00Z)

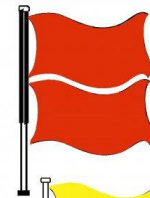
National Digital Forecast Database

11z issuance

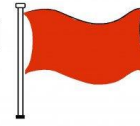
Graphic created-Sep 01 7:19AM EDT



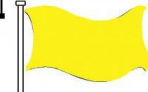
BEACH FLAG WARNING SYSTEM



Double Red
Water Closed to
Public Use



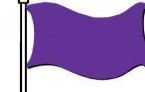
Red
High Hazard
(rough conditions,
such as strong surf
and or currents)



Yellow
Medium Hazard
(light surf and or
currents)



Green
Low Hazard
(calm conditions)



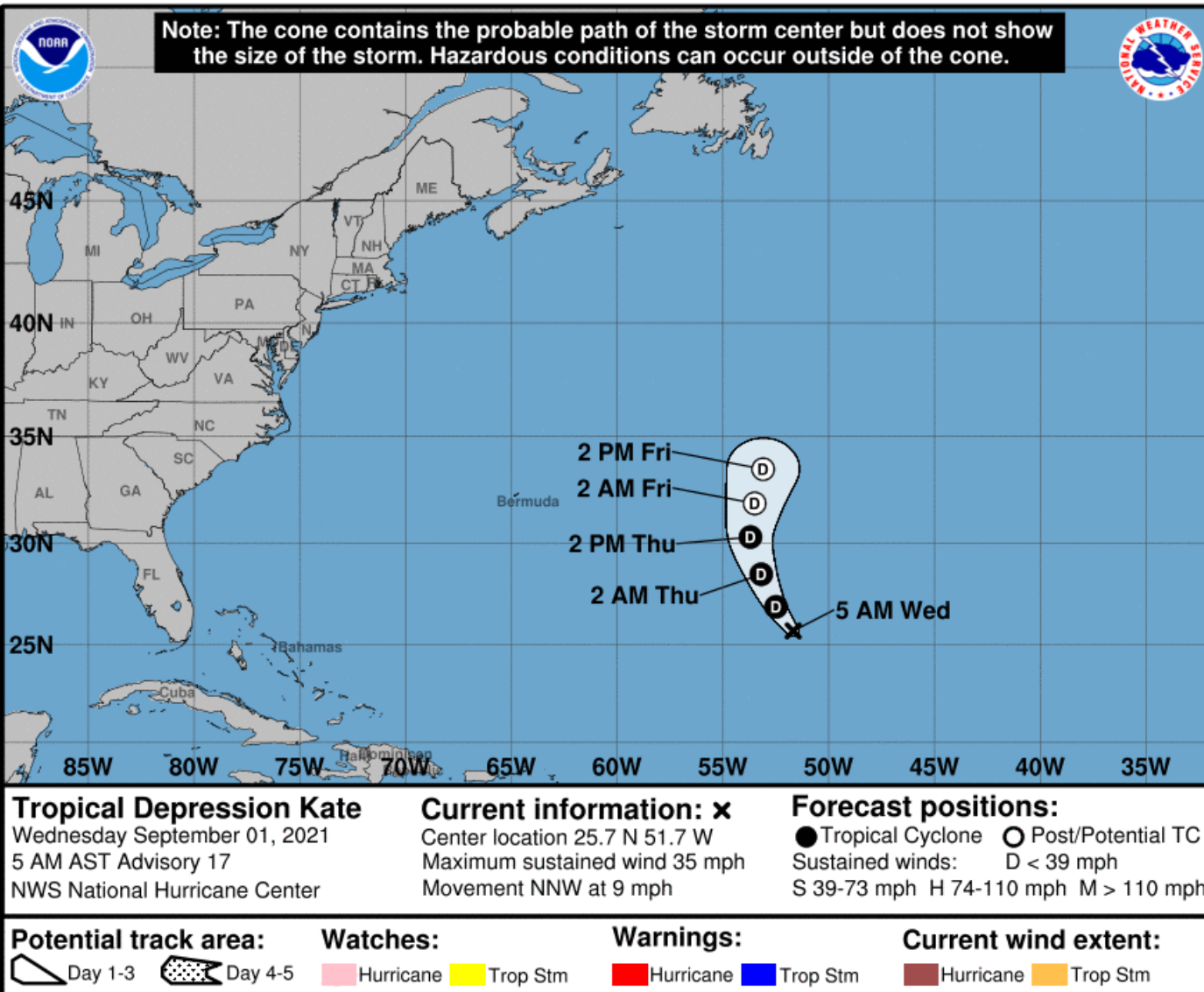
Purple
Marine Pest
(jellyfish, stingrays
& dangerous fish)

Surf will remain elevated today, with breaking waves of 4'-7' possible in the Panhandle. This will continue the risk for dangerous rip currents and minor beach erosion/coastal flooding. The rip current also remains high along the West Coast today, and still elevated at Atlantic beaches north of Palm Beach.



Official Forecast Track

From the National Hurricane Center – TD Kate

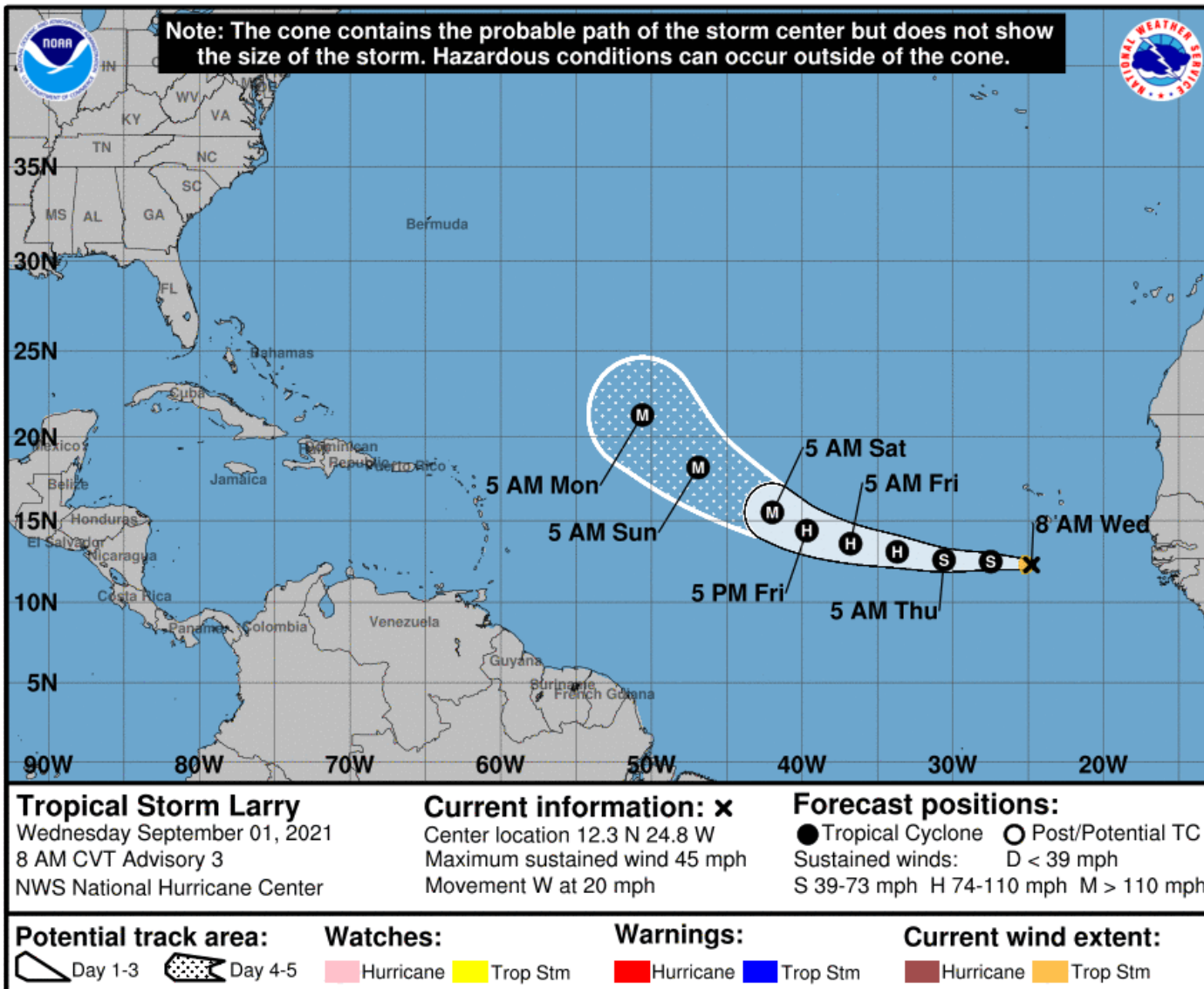


- **Location:** 900 miles northeast of the Lesser Antilles; 1,800 miles east of Miami, FL
- **Maximum sustained winds:** 35 mph.
- **Movement:** NNW at 9 mph.
- **Forecast:** A general northward motion is forecast to continue over the next couple of days. Little change in strength is forecast today and the system is likely to dissipate on Friday. Strong wind shear has made the environment unfavorable.
- This system poses no threat to Florida.



Official Forecast Track

From the National Hurricane Center – TS Larry



- **Location:** 175 miles south of the Cabo Verde Islands
- **Maximum sustained winds:** 45 mph.
- **Movement:** W at 20 mph.
- **Forecast:** A general westward motion is forecast to continue over the next couple of days with gradual increase in strength into a hurricane. By this weekend, a northwest turn will begin and some rapid strengthening into a major hurricane is forecast.
- This system poses no threat to Florida over the next 7 days at least.



Tropical Weather Outlook

Possible Areas of Development During the Next 5 Days ([LINK](#))



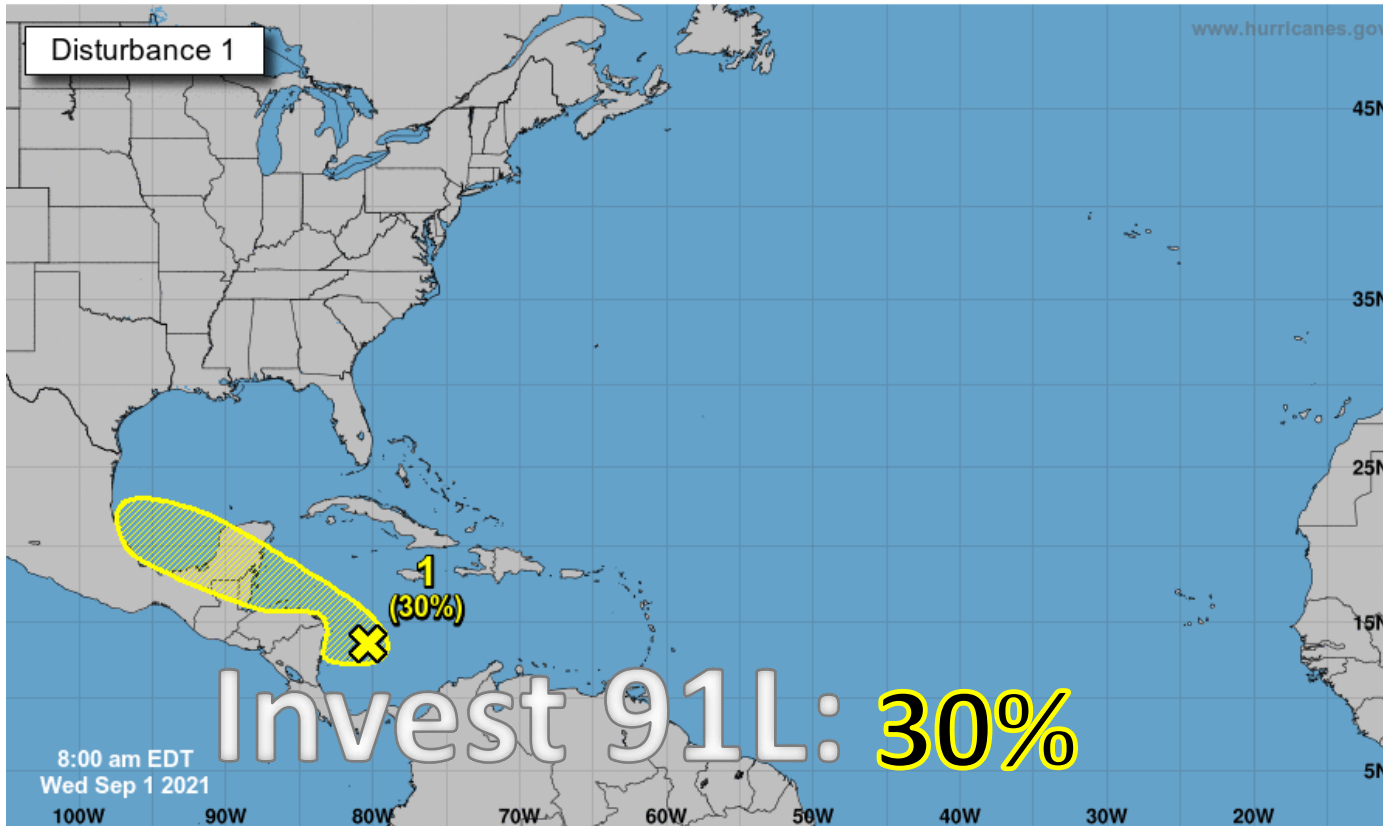
Five-Day Graphical Tropical Weather Outlook

National Hurricane Center Miami, Florida



www.hurricanes.gov

Disturbance 1



Current Disturbances and Five-Day Cyclone Formation Chance:

✕ < 40% ✕ 40-60% ✕ > 60%

Tropical or Sub-Tropical Cyclone: ○ Depression ○ Storm ○ Hurricane

⊗ Post-Tropical Cyclone or Remnants

An area of low pressure continues to produce disorganized shower activity over the southwestern Caribbean Sea. Some slow development of this system remains possible over the next couple of days if it remains over open water while moving west-northwestward or northwestward at 5 to 10 mph near the coast of Central America.

Thereafter, the system will have another opportunity for gradual development in the southwestern Gulf of Mexico. Regardless of development, heavy rains are possible across portions of Central America and the Yucatan Peninsula later this week into the weekend.

* Formation chance through 48 hours...low...30 percent.

* Formation chance through 5 days...low...30 percent.

These systems pose no threat to Florida within the next 5 days.



Model Forecast Tracks – Next 6 Days

GFS Ensemble Models – Monday Morning 9/6

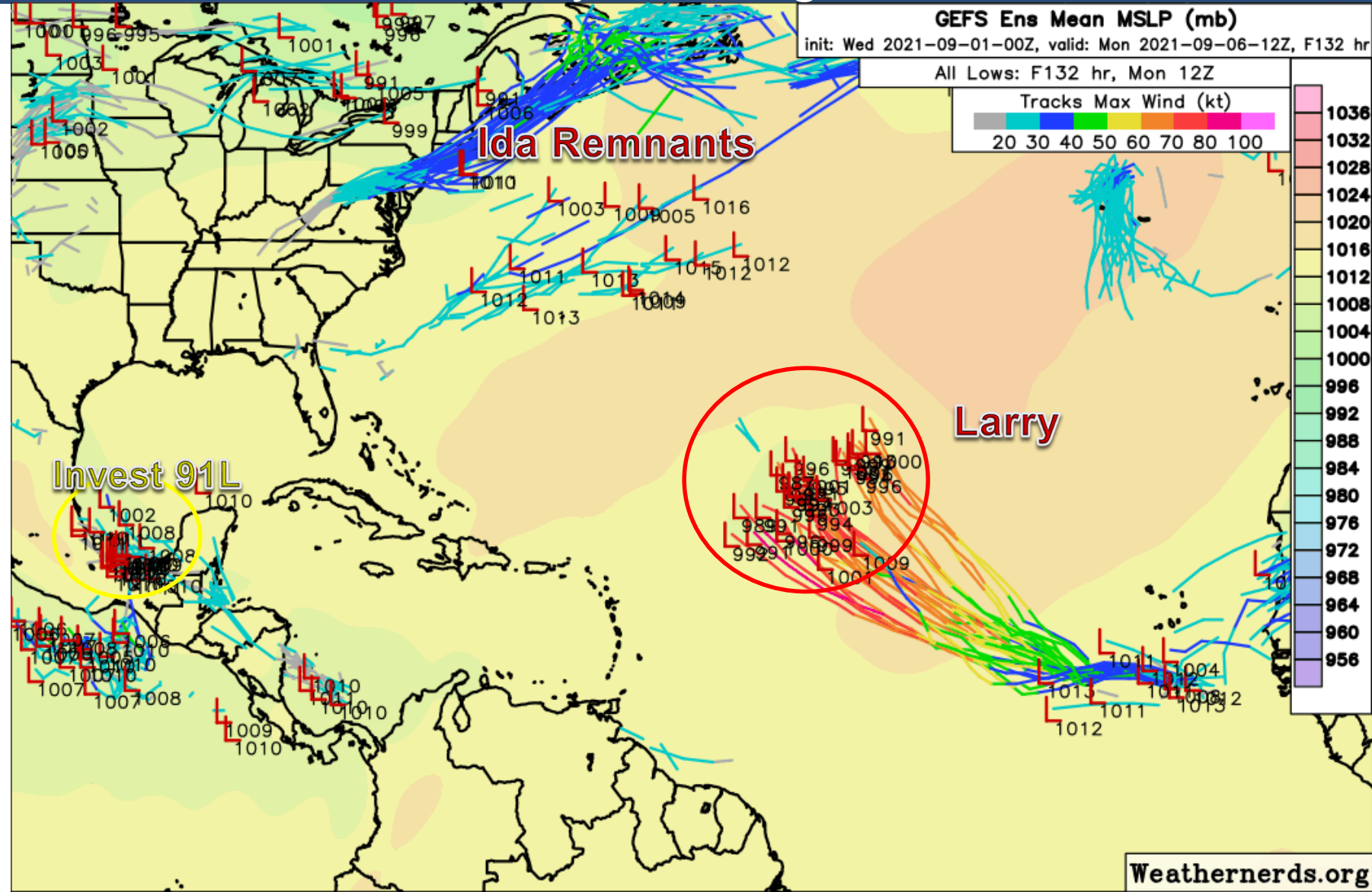
Possible locations of all tropical systems on Monday morning 9/6.

Larry will be a hurricane in the open waters of the Central Atlantic.

The remnants of Ida will be well north into Atlantic Canada.

Kate will have dissipated.

And there is a low chance of a new named system in the southwestern Gulf of Mexico stemming from the tropical wave in the southwestern Caribbean today.





Overall Summary

Tropical Depression Ida:

- Ida is becoming post-tropical over the Mid-Atlantic, but trailing bands of thunderstorms linger across Northeast and Central Florida today.
- These rain bands are producing heavy rainfall and gusty winds.
- A cold front will move into North and Central Florida later this week in the wake of Ida and keep rain chances high along the I-4 corridor.

Tropical Depression Kate:

- Kate weakened to a tropical depression yesterday and continues to struggle due to dry air and strong wind shear.
- The center of Kate is located about 900 miles northeast of the Lesser Antilles with maximum sustained winds of 35 mph.
- Kate is moving north at 9 mph over open water, and this general motion will continue until the system dissipates on Friday.

Tropical Storm Larry (formerly Invest 90L/African Tropical Wave):

- The tropical wave near the west coast of Africa that the National Hurricane Center has been tracking for the last few days developed into Tropical Depression Twelve yesterday afternoon and Tropical Storm Larry overnight.
- The center of Larry is about 165 miles south of the Cabo Verde Islands with maximum sustained winds of 45 mph.
- Larry is moving to the west at 20 mph and this general motion will continue until Friday. This weekend, Larry will begin to turn northwest.
- Gradual strengthening is forecast over the next couple of days with Larry forecast to become a hurricane on Friday and a major hurricane this weekend.

Western Caribbean Low (Invest 91L):

- An area of low pressure continues to produce disorganized shower activity over the southwestern Caribbean Sea.
- Some slow development of this system remains possible over the next couple of days if it remains over open water while moving west-northwestward or northwestward at 5 to 10 mph near the coast of Central America.
- Thereafter, the system will have another opportunity for gradual development in the southwestern Gulf of Mexico.
- The National Hurricane Center gives this system a 30% (low) chance of development over the next 48 hours and 5 days.
- The next name on the list is Mindy.



Overall Summary

Florida Outlook:

- Tropical Depression Kate poses no threat to Florida.
- Tropical Storm Larry poses no threat to Florida for at least the next 7 days. Large swells from the hurricane could arrive at Atlantic beaches later next week and increase the rip current threat.
- Invest 91L in the Caribbean poses no threat to Florida over the next 5 days.
- The remnants of Ida and a cold front will work together to keep rain chances high over the next few days in Northeast and Central Florida, specifically along the West Coast of the Peninsula.
- Breezy winds of 20-35 mph remain possible along the Gulf Coast and Northeast Florida today.
- Gusts of 45-60 mph will be possible from strong to severe thunderstorms in Northeast and Central Florida today.
- The tornado threat has diminished.
- There is a Slight Risk (Level 2 of 4) of Flash Flooding today along the Nature Coast, which means flash flooding is possible. An isolated flash flood is also possible across the rest of North and Central Florida. Urban areas will be most susceptible.
- 1-3" of rain is forecast over the next 48 hours, with localized totals of 4-6" in this region, with isolated totals elsewhere.
- **Minor river flooding** is ongoing along the Perdido River and forecast along the Shoal River at Crestview. Rises to bank-full are expected at other Panhandle rivers. Renewed minor flooding is possible on Northeast Florida and West Coast rivers.
- High surf (4-7') and a high risk of rip currents will continue at Gulf Coast beaches.

The next briefing packet will be issued Thursday morning. For the latest information, please visit the National Hurricane Center website at www.hurricanes.gov.



TROPICAL UPDATE



Created by:

Michael Spagnolo, Deputy State Meteorologist

Michael.Spagnolo@em.myflorida.com

State Meteorological Support Unit

Florida Division of Emergency Management

Users wishing to subscribe (approval pending) to this distribution list, register at:

https://public.govdelivery.com/accounts/FLDEM/subscriber/new?topic_id=SERT_Met_Tropics.

Other reports available for subscription are available at:

<https://public.govdelivery.com/accounts/FLDEM/subscriber/new?preferences=true>