



TROPICAL UPDATE



9:00 AM EDT

Monday, August 30, 2021

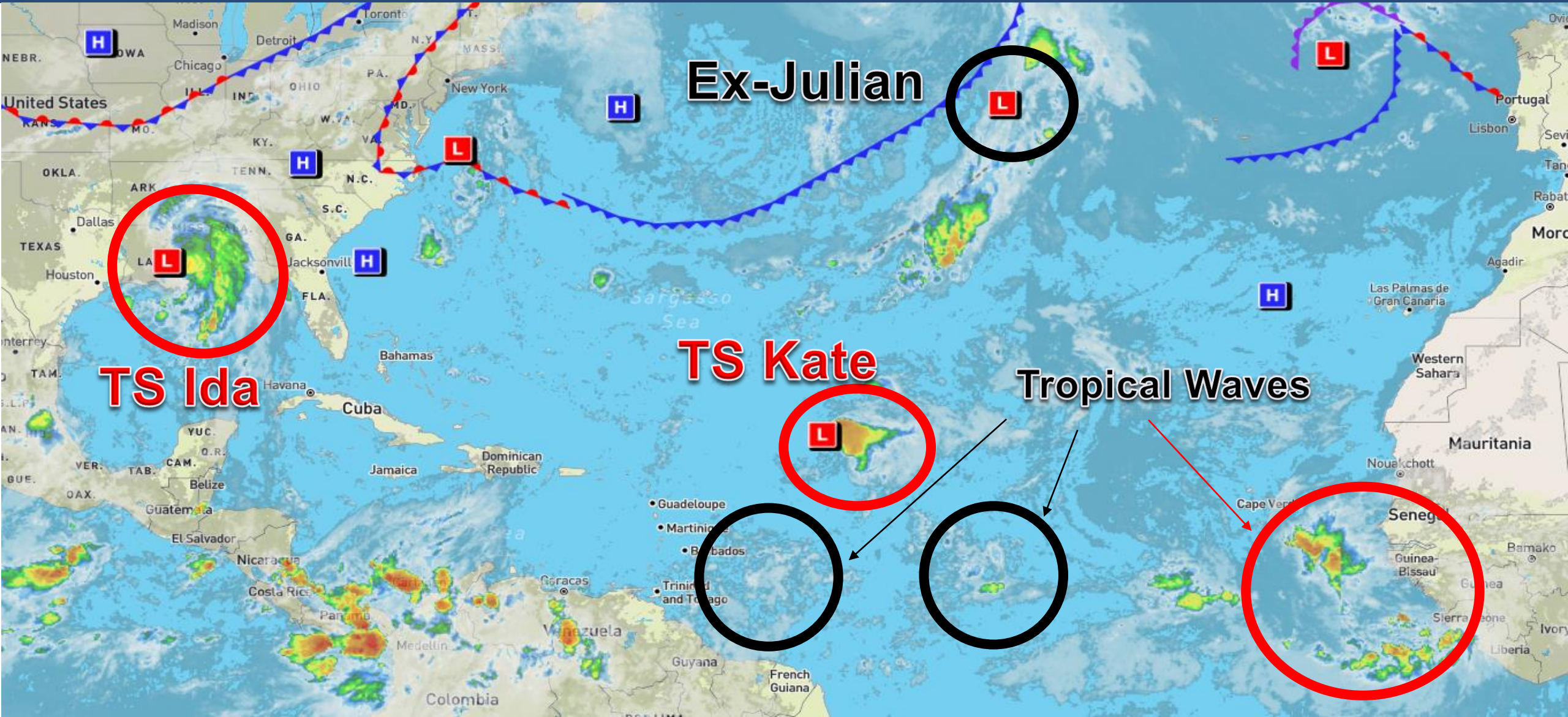
Tropical Storm Ida & Flood Impacts to Panhandle,
Tropical Storm Kate, African Tropical Wave (80%), &
Next Caribbean Low (20%)

This update is intended for government and emergency response officials, and is provided for informational and situational awareness purposes only. Forecast conditions are subject to change based on a variety of environmental factors. For additional information, or for any life safety concerns with an active weather event please contact your County Emergency Management or Public Safety Office, local National Weather Service forecast office, or visit the National Hurricane Center website at www.hurricanes.gov.



Atlantic Basin Satellite Image

Chance of development: — None — Low — Medium — High



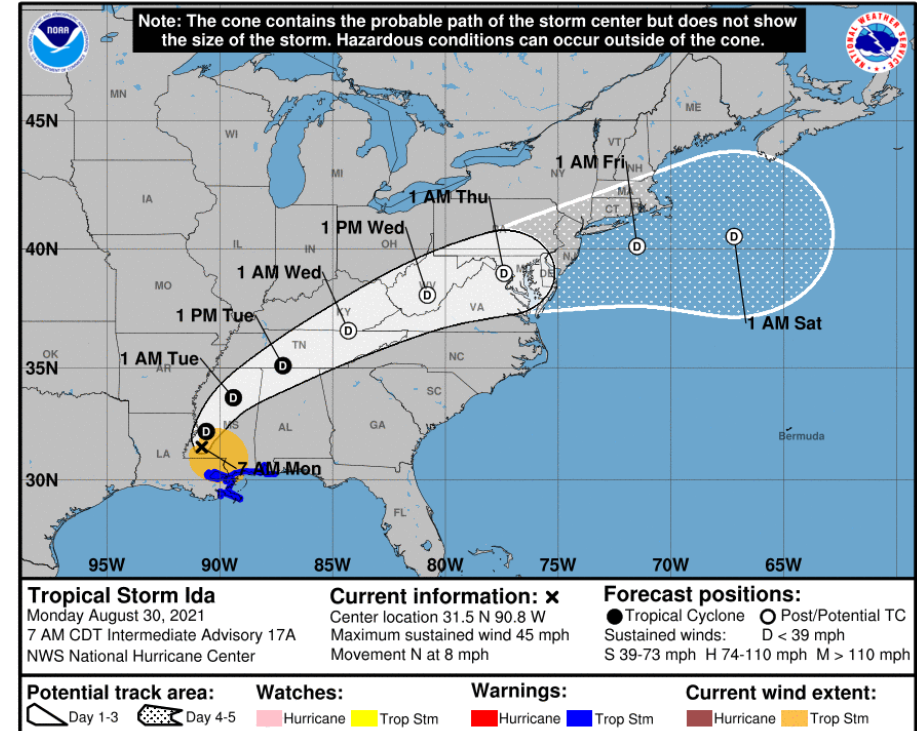


Tropical Storm Ida

8 AM ET Monday: Florida Threats & Changes Since Last Packet

	MINIMAL	Low	MODERATE	HIGH	EXTREME
WINDS					
STORM SURGE					
FLASH FLOODING					
TORNADOES					
	Low	MODERATE		HIGH	
RIP CURRENTS					

National Hurricane Center Map



Overview/Recent Changes:

Flash Flood Threat to continue for the Florida Panhandle today, and expand eastward into the Big Bend and Suwannee Valley tomorrow and Wednesday.

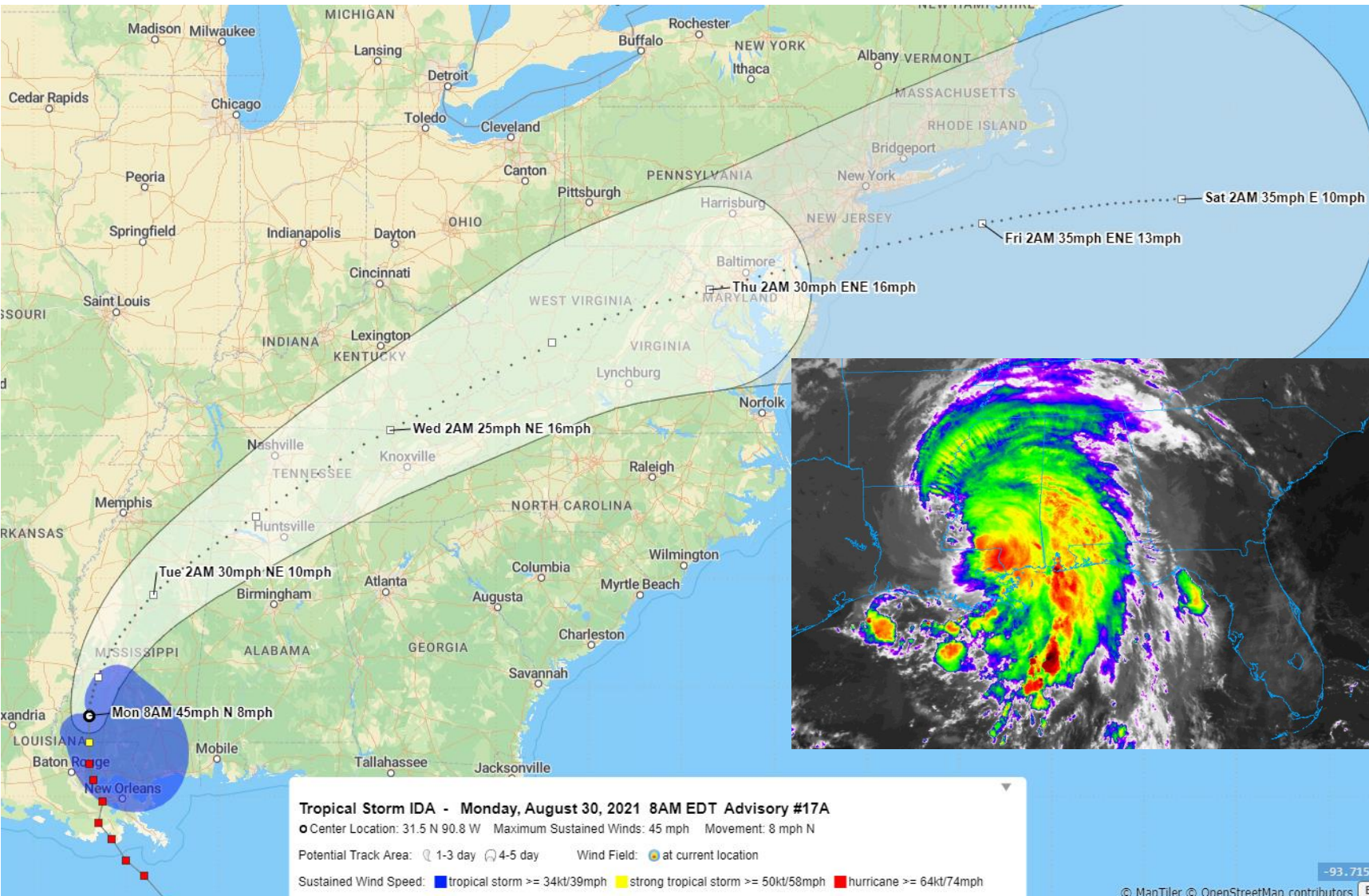
Ida is now a tropical storm with winds of 45mph.

Tornado Watch in effect until 4pm CDT.



Official Forecast Track

From the National Hurricane Center



- **Location:** 65 miles south-southwest of Jackson, MS; 225 miles northwest of Pensacola, Florida.
- **Maximum sustained winds:** 45 mph
- **Movement:** N at 8 mph. This general motion should continue over the next 6-12 hours, followed by a turn to the northeast tonight along with a faster acceleration.
- **Forecast:** Ida is forecast to continue weakening as it moves inland, becoming a depression today and a post-tropical depression by Wednesday as it moves over the Tennessee Valley.



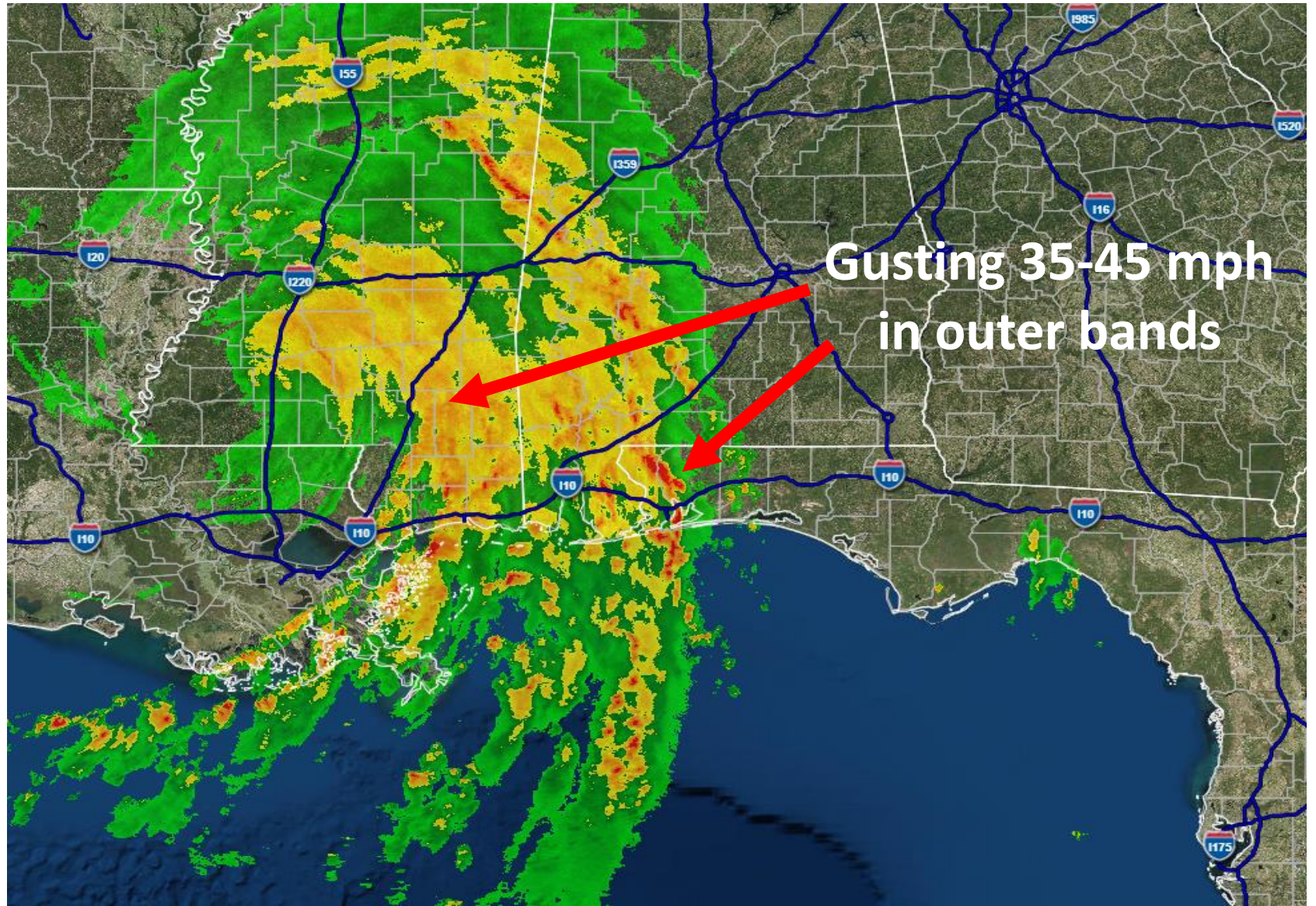
Current Florida Radar

As of 8:20 AM ET

Outer rain bands continue to affect the Panhandle.

Peak gusts of 30-45 mph are possible in the rain bands, along with the threat for isolated tornadoes and heavy rain.

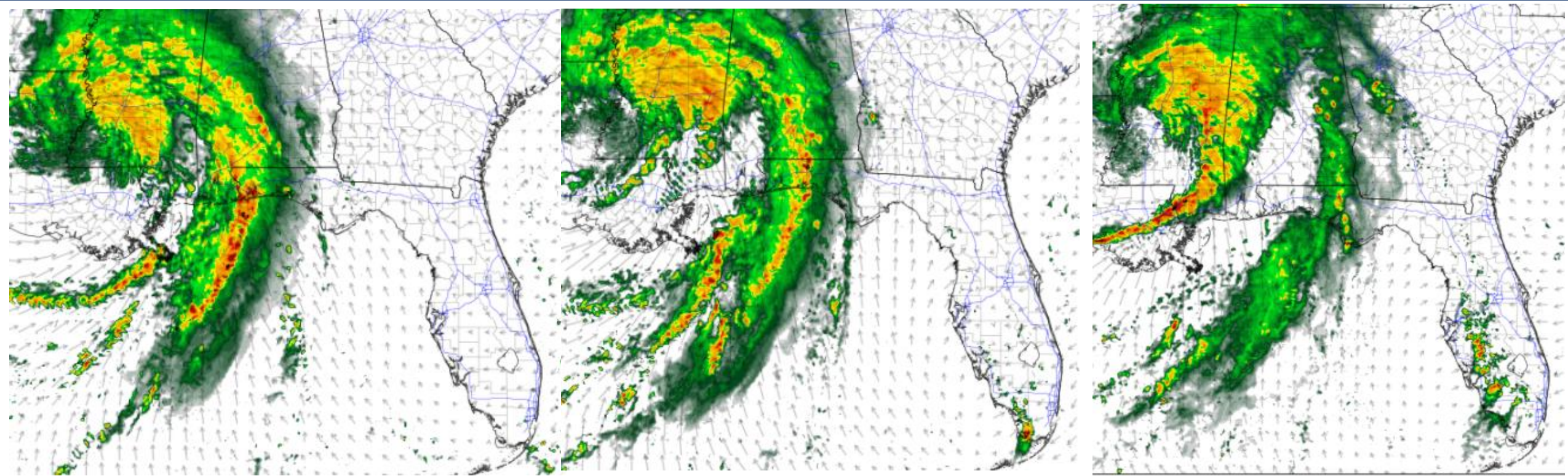
“Training” of storm cells containing heavy rain will increase the flash flood risk, as thunderstorms along the eastern rain bands take on a south to north movement over the next few days.





Model Forecast Radar

*****Only Model Guidance – Time & Position Will Vary*****



1pm ET / 12pm CT

4pm ET / 3 pm CT

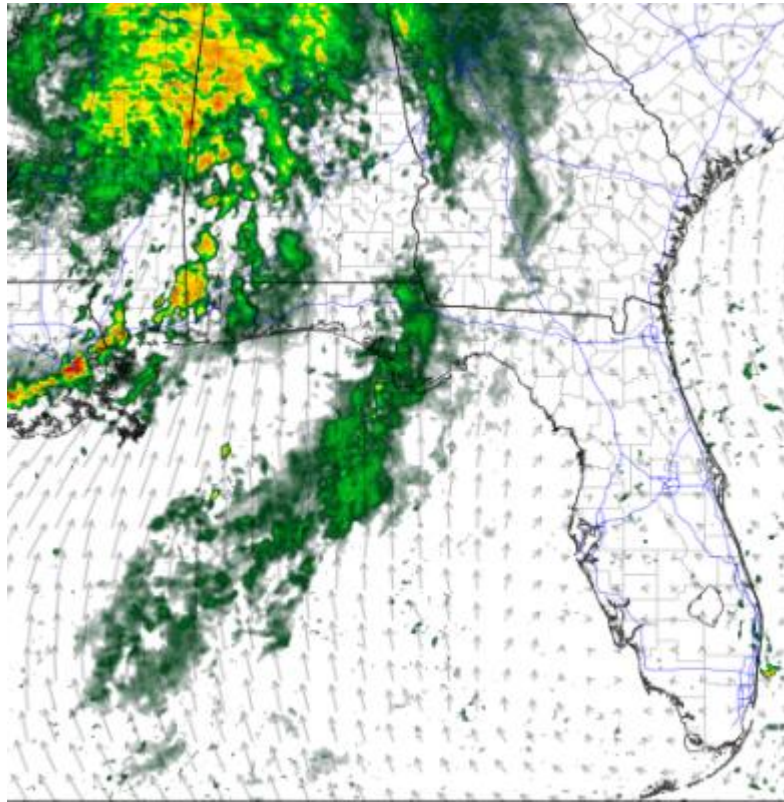
8pm ET / 7pm CT

Rain bands will move through the western Panhandle throughout the day. Isolated tornadoes are possible and if rain bands train over the same area, flash flooding could result.

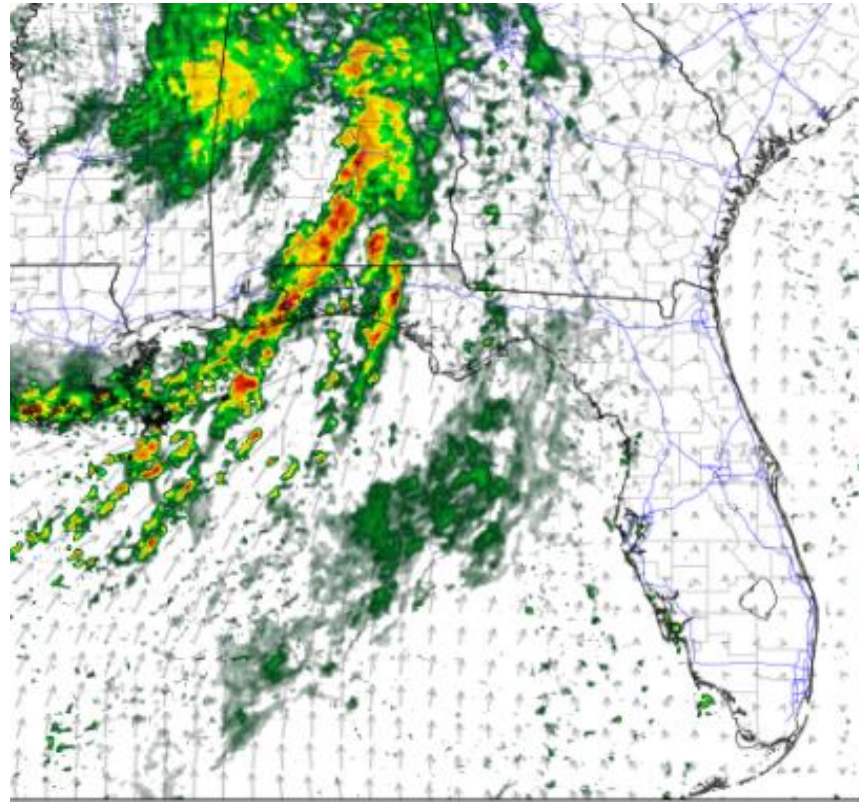


Model Forecast Radar

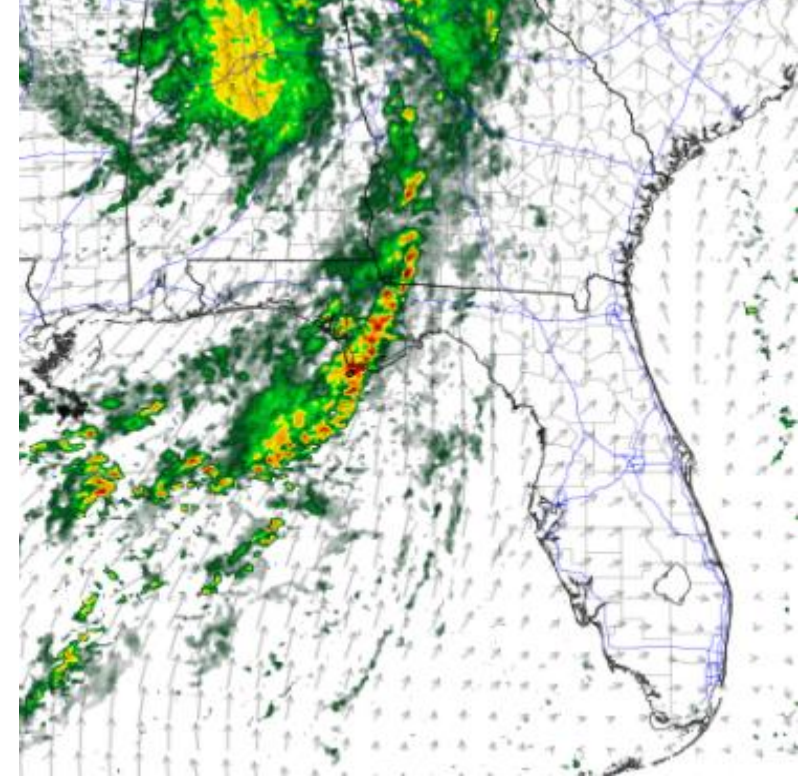
*****Only Model Guidance – Time & Position Will Vary*****



11pm ET / 10pm CT



8am ET / 7 am CT Tuesday



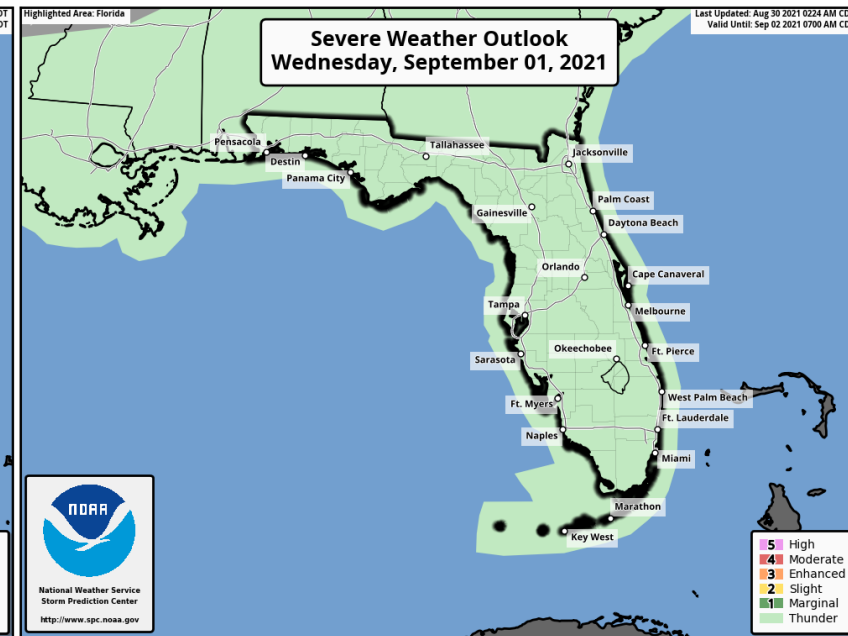
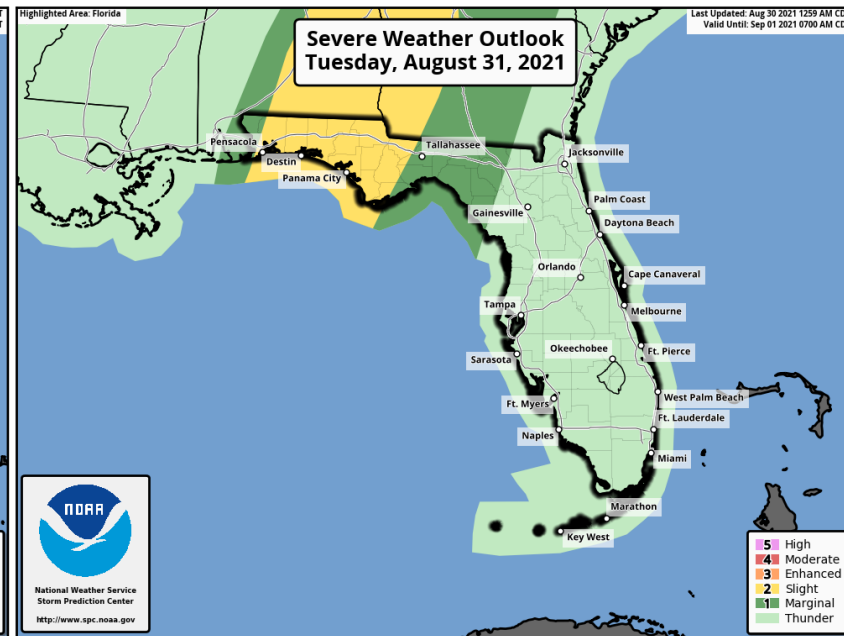
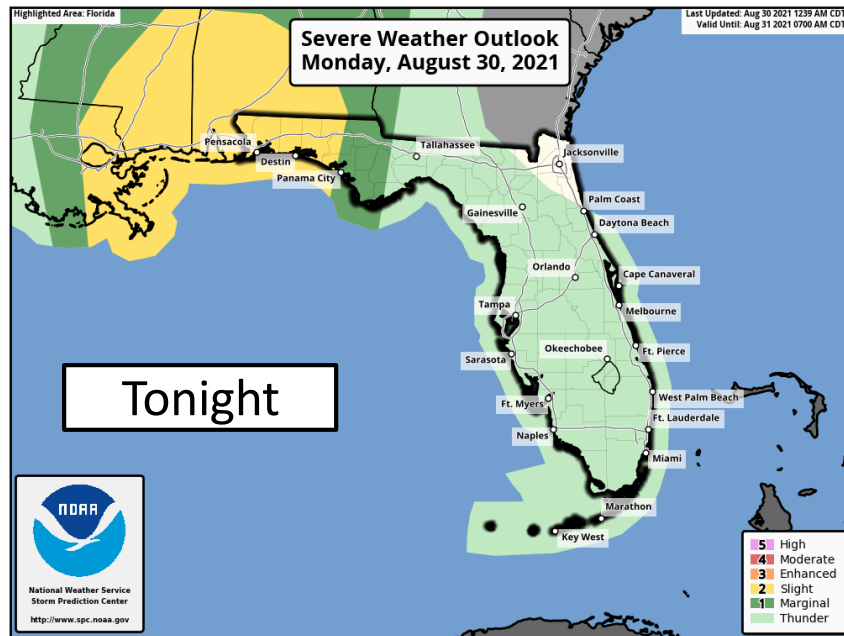
2pm ET / 1pm CT Tuesday

New rain bands continue to affect the Panhandle overnight and expand into the Florida Big Bend by tomorrow afternoon.



Severe Weather Outlooks

From the Storm Prediction Center



Outer rain bands from Ida may result in a few tornadoes across the Panhandle and western Big Bend through Tuesday. The greatest threat is expected to be in the western Panhandle today and tonight and then expand into the eastern Panhandle and Big Bend on Tuesday. The risk should decrease on Tuesday night and Wednesday.

Understanding Severe Thunderstorm Risk Categories

THUNDERSTORMS (no label)	1 - MARGINAL (MRGL)	2 - SLIGHT (SLGT)	3 - ENHANCED (ENH)	4 - MODERATE (MDT)	5 - HIGH (HIGH)
No severe* thunderstorms expected	Isolated severe thunderstorms possible	Scattered severe storms possible	Numerous severe storms possible	Widespread severe storms likely	Widespread severe storms expected
Lightning/flooding threats exist with <u>all</u> thunderstorms	Limited in duration and/or coverage and/or intensity	Short-lived and/or not widespread, isolated intense storms possible	More persistent and/or widespread, a few intense	Long-lived, widespread and intense	Long-lived, very widespread and particularly intense



Tornado Watch

From the Storm Prediction Center

Includes Escambia, Santa Rosa, and Okaloosa County until 4 PM CT.

Additional tornado watches are possible this evening and/or Tuesday morning.

Tornado Watch

Valid Until
4:00 PM CDT Monday
August 30, 2021

Threat Information



TORNADOES

A Couple Tornadoes Possible



HAIL

Isolated Hail Up To Small Marble Size Possible



WIND

Isolated Gusts Up To 60 MPH Possible

Potential Exposure



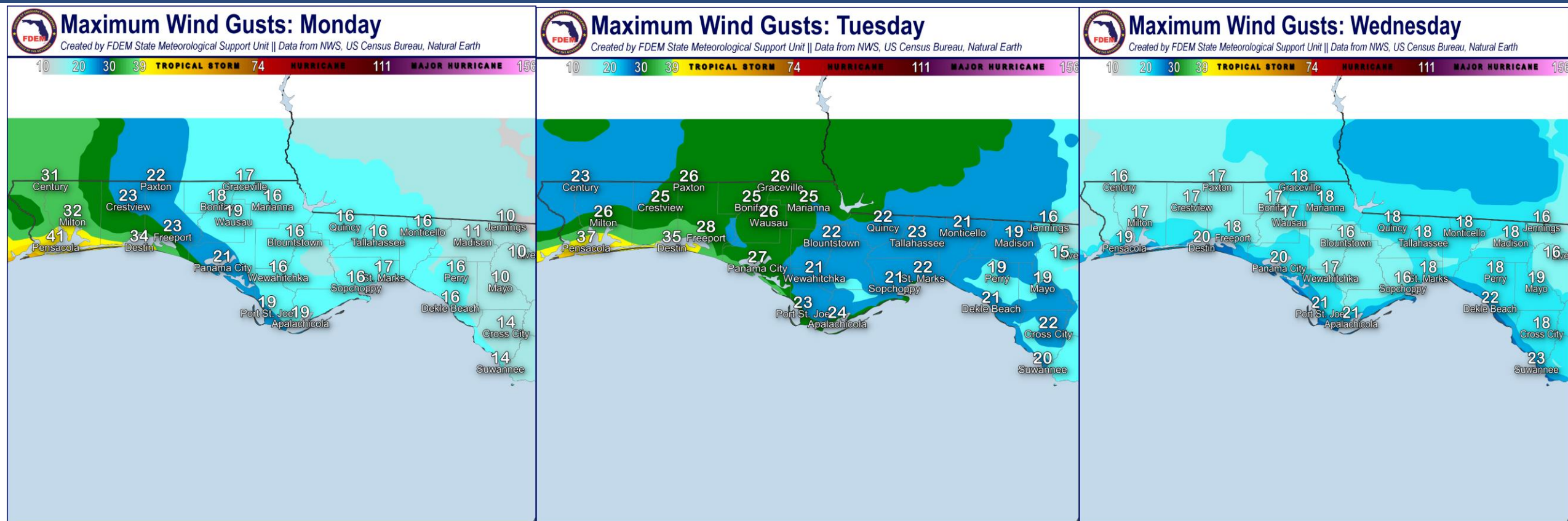
Population: 1,925,887
Schools: 580
Hospitals: 62





NWS Forecast Wind Gusts

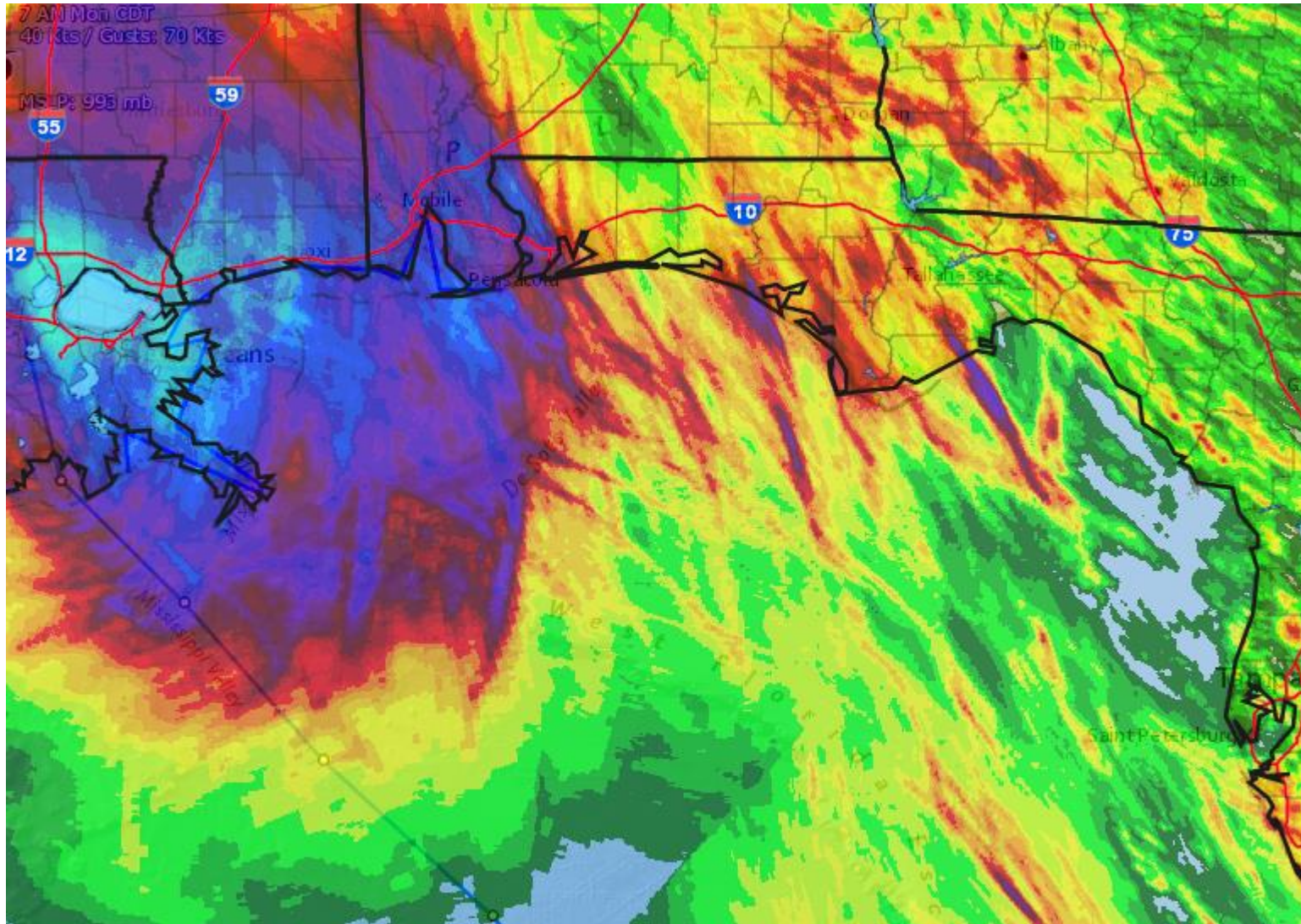
Exact wind gusts will vary in time, magnitude, and location



Gusty winds up to 45mph will continue across the coast of the Panhandle. Higher values are possible in severe thunderstorms. Gusty winds will continue into the day on Tuesday.



Observed Rainfall – Past 48 Hours



Rainfall totals of 4-8" have occurred over Escambia County, with rain amounts of 1-4" elsewhere in the Panhandle.



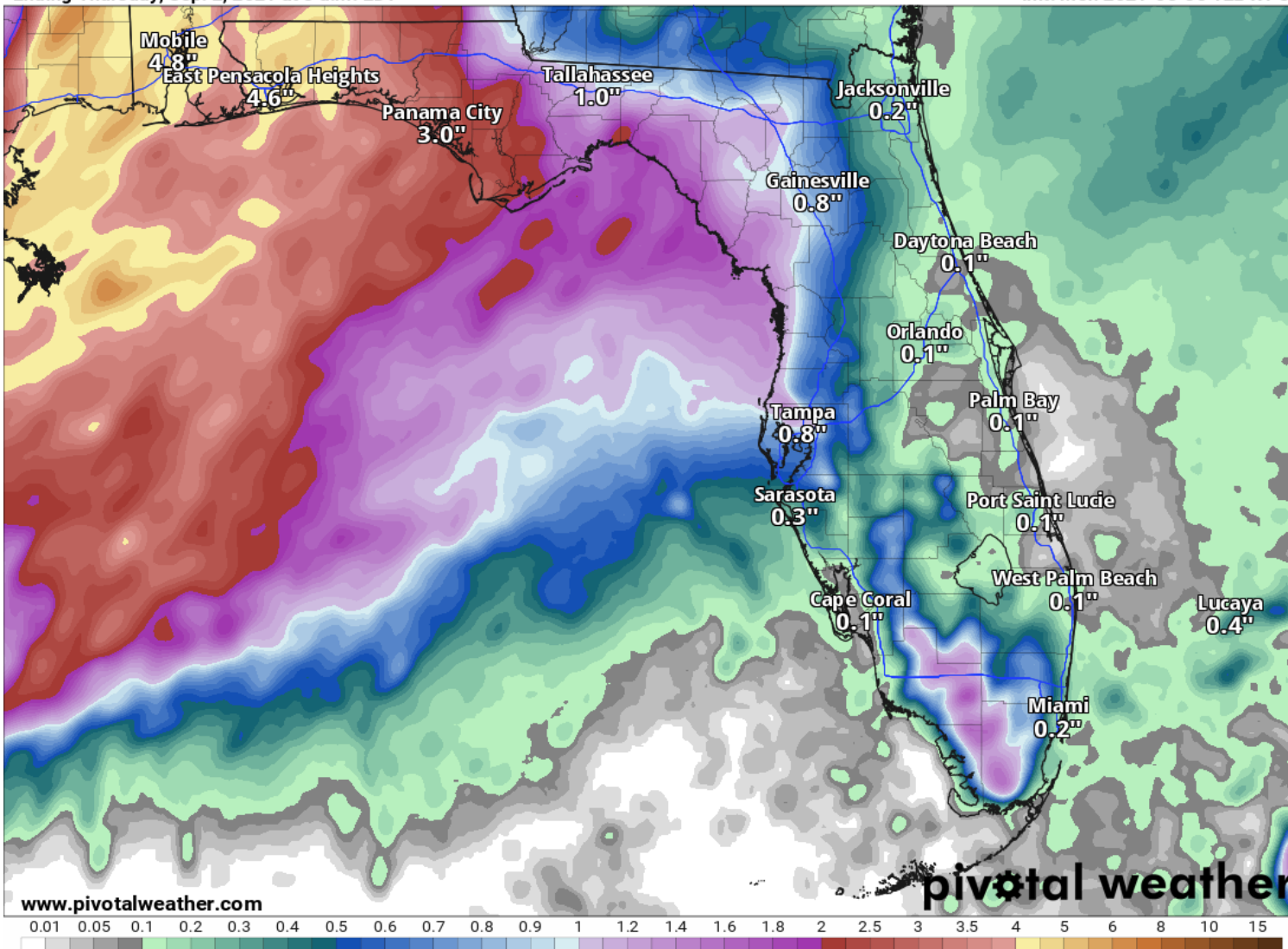
Rainfall Totals Next 3 Days

Ending 8 AM ET Thursday

72-Hour Precipitation (in)

Ending Thursday, Sep. 2, 2021 at 8 a.m. EDT

Init: Mon 2021-08-30 12z WPC



An additional 4-6" rain is forecast
for the western Panhandle over the
net 2-3 days.

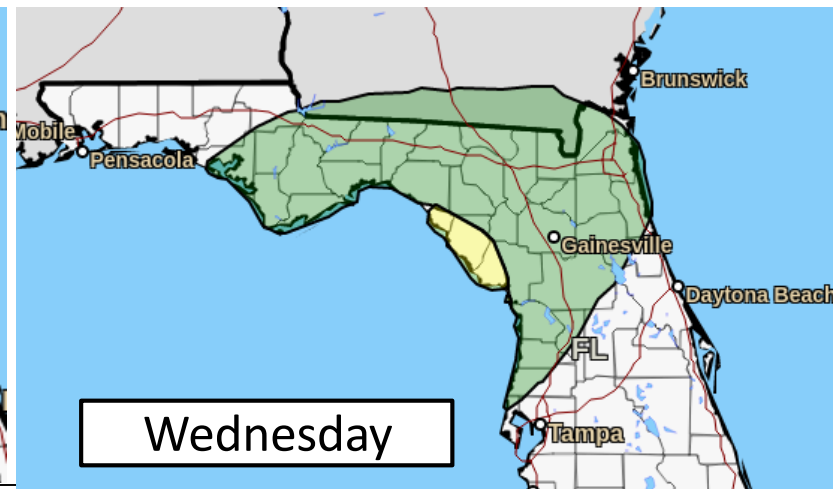
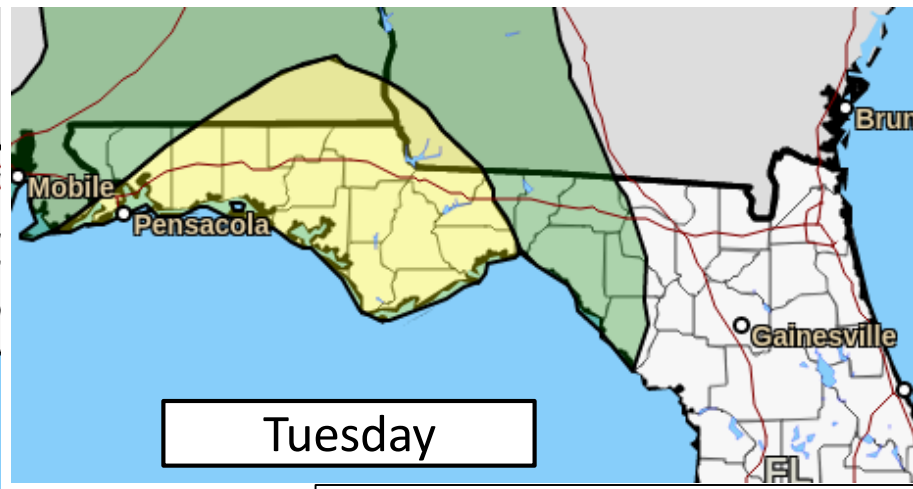
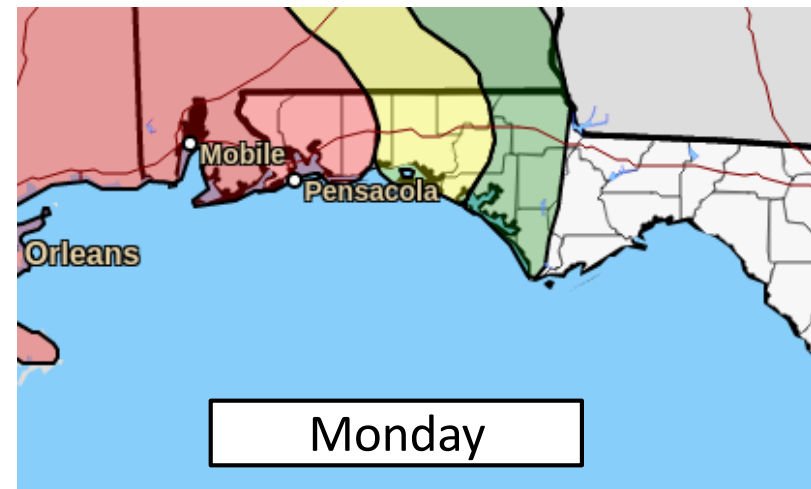
Along the rest of the Panhandle
and Big Bend, expect rainfall
amounts of 2-4" with localized
totals of up to 6-8" possible.

1-3" of rain is forecast for the
Suwannee Valley & Nature Coast
over the next few days.



Flash Flood Risks

From the Weather Prediction Center



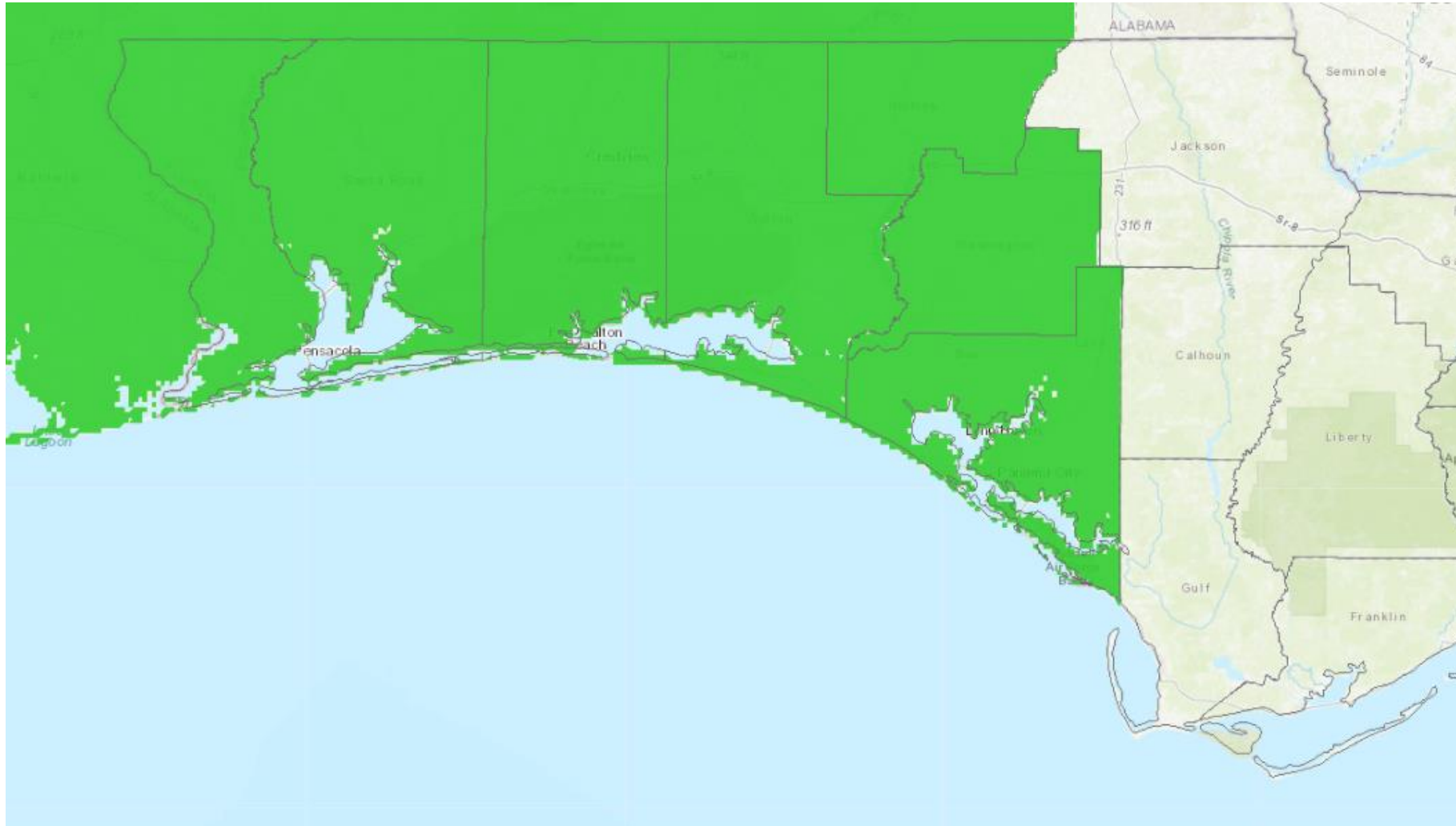
MARGINAL (MRGL)	SLIGHT (SLGT)	MODERATE (MDT)	HIGH (HIGH)
Isolated flash floods possible	Scattered flash floods possible	Numerous flash floods likely	Widespread flash floods expected
Localized and primarily affecting places that can experience rapid runoff with heavy rainfall.	Mainly localized. Most vulnerable are urban areas, roads, small streams and washes. Isolated significant flash floods possible.	Numerous flash flooding events with significant events possible. Many streams may flood, potentially affecting larger rivers.	Severe, widespread flash flooding. Areas that don't normally experience flash flooding, could. Lives and property in greater danger.

Outer rain bands could train over the same areas as Ida moves by to the northwest. This could result in flash flooding and urban street flooding, especially in urban areas and areas still heavily saturated from Tropical Storms Fred and Elsa.

The highest risk will be over the western Panhandle on Monday where there is a **Moderate** (level 3 of 4 on the Weather Prediction Center's scale) risk for flash flooding. On Tuesday and Wednesday, even with Ida well to the north, trailing rain bands will continue to pose a flood threat across the Panhandle, Big Bend and portions of the northern Peninsula.



Flash Flood Watch



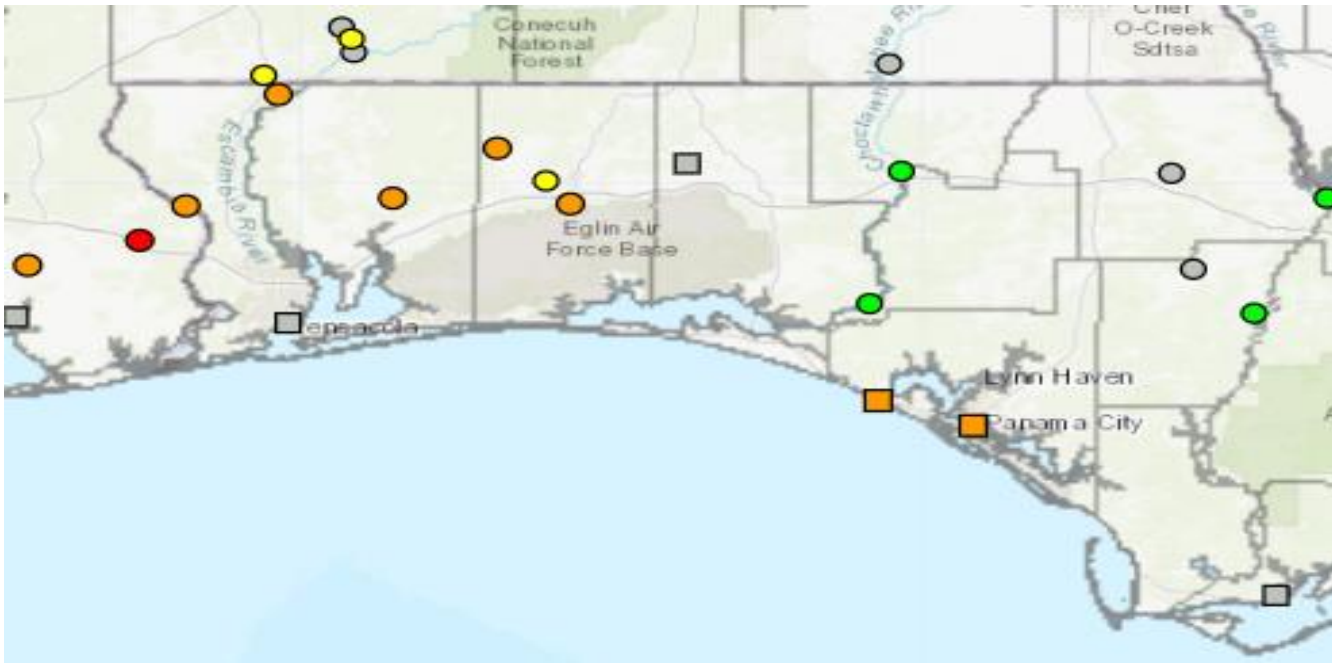
- In effect through Tuesday evening.
- Counties: Escambia, Santa Rosa, Okaloosa, Walton, Holmes, Washington, Bay.



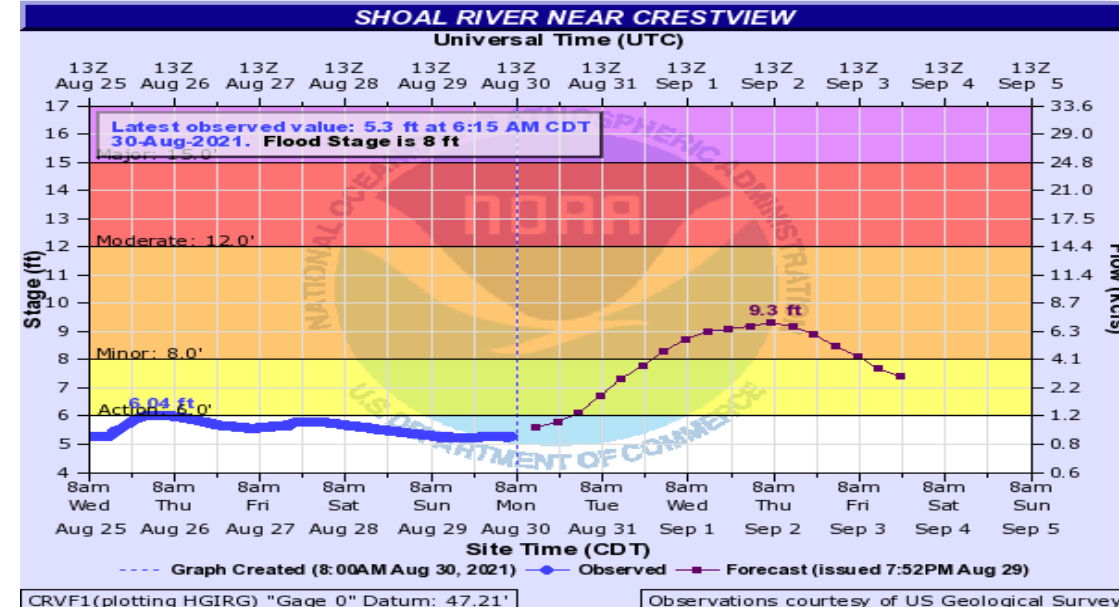
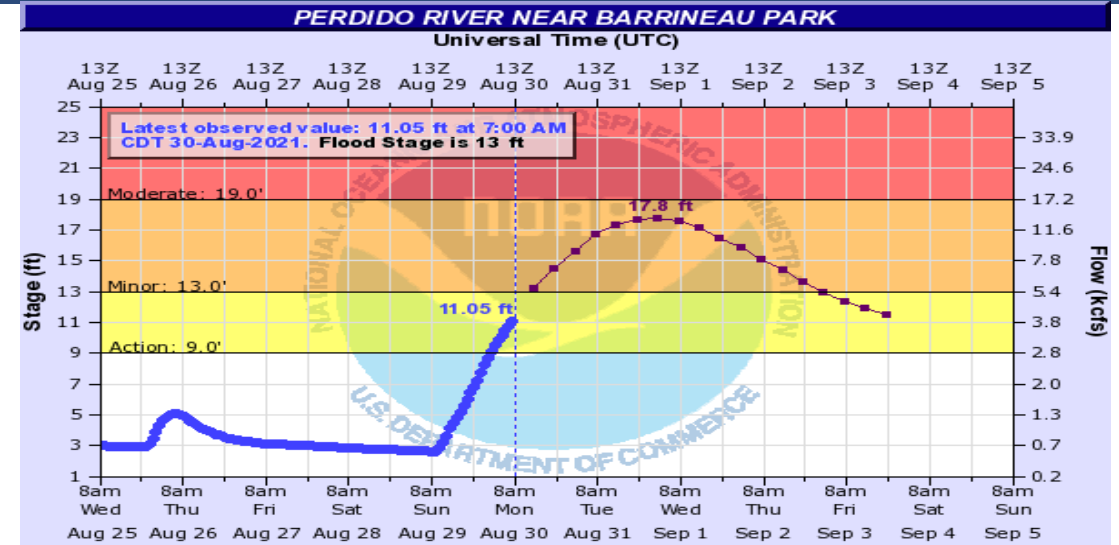
Possible River Flooding

Forecast Highest Stage Based on Observed and Forecast Rainfall

Based on current forecasts, minor river flooding is possible on some Panhandle rivers and creeks in the wake of Hurricane Ida. Specific river forecasts are available [here](#).

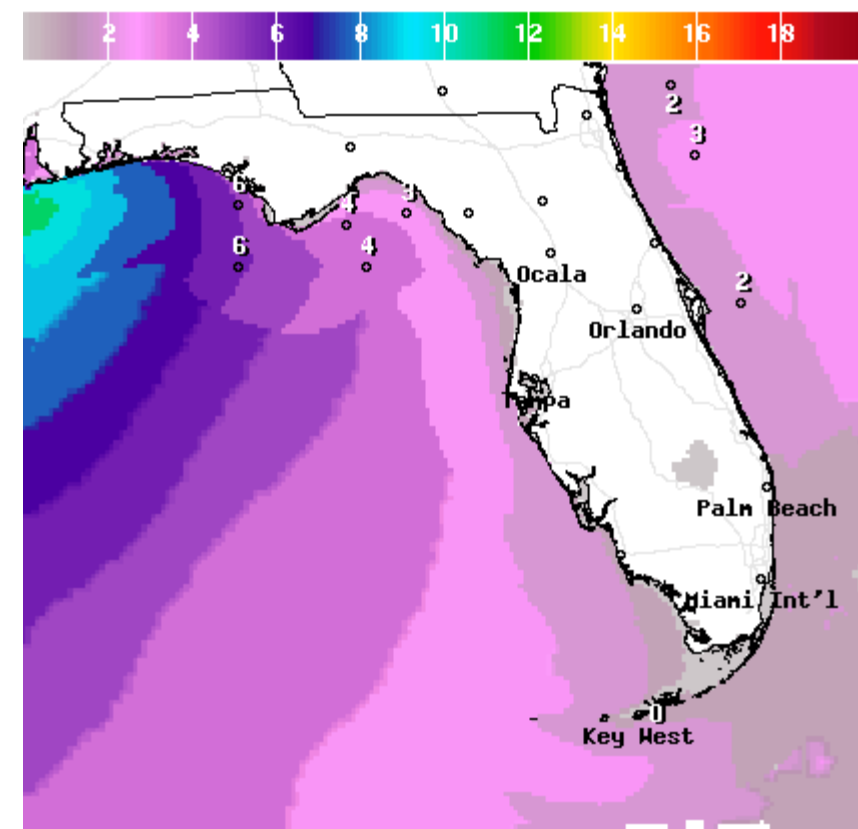


Yellow dot	Action
Orange dot	Minor Flood
Red dot	Moderate Flood
Purple dot	Major Flood

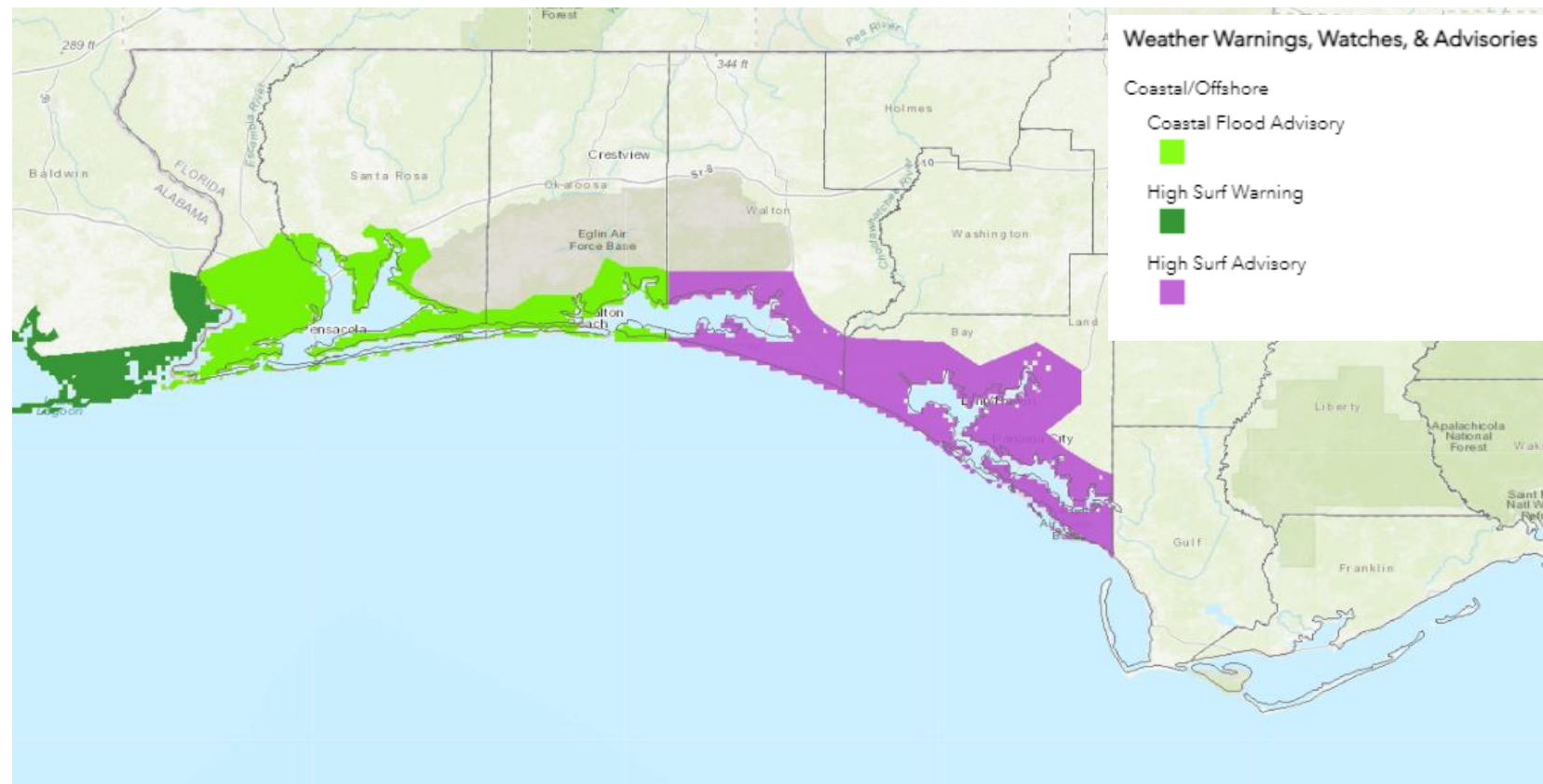




Forecast Wave Heights



Wave Height(ft) Ending Mon Aug 30 2021 2PM EDT



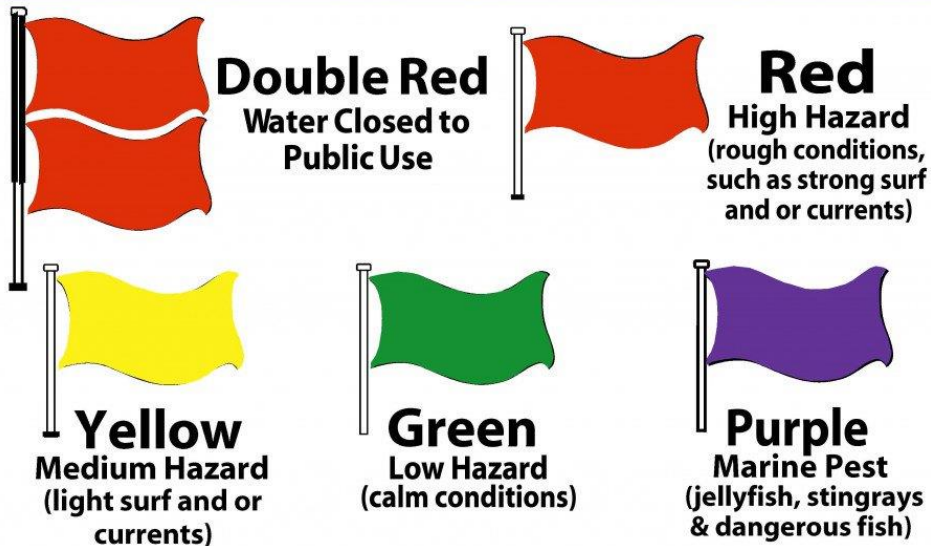
Surf will remain high today, with breaking waves of 4'-8' possible in the Panhandle. This will result in dangerous rip currents at all Gulf Coast beaches, and minor beach erosion/coastal flooding. A **High Surf Warning** and **Coastal Flood Advisory** is in effect for Escambia, Santa Rosa and Okaloosa Counties, with a **High Surf Advisory** in effect for Walton and Bay Counties.



Rip Current Outlook

Today

BEACH FLAG WARNING SYSTEM



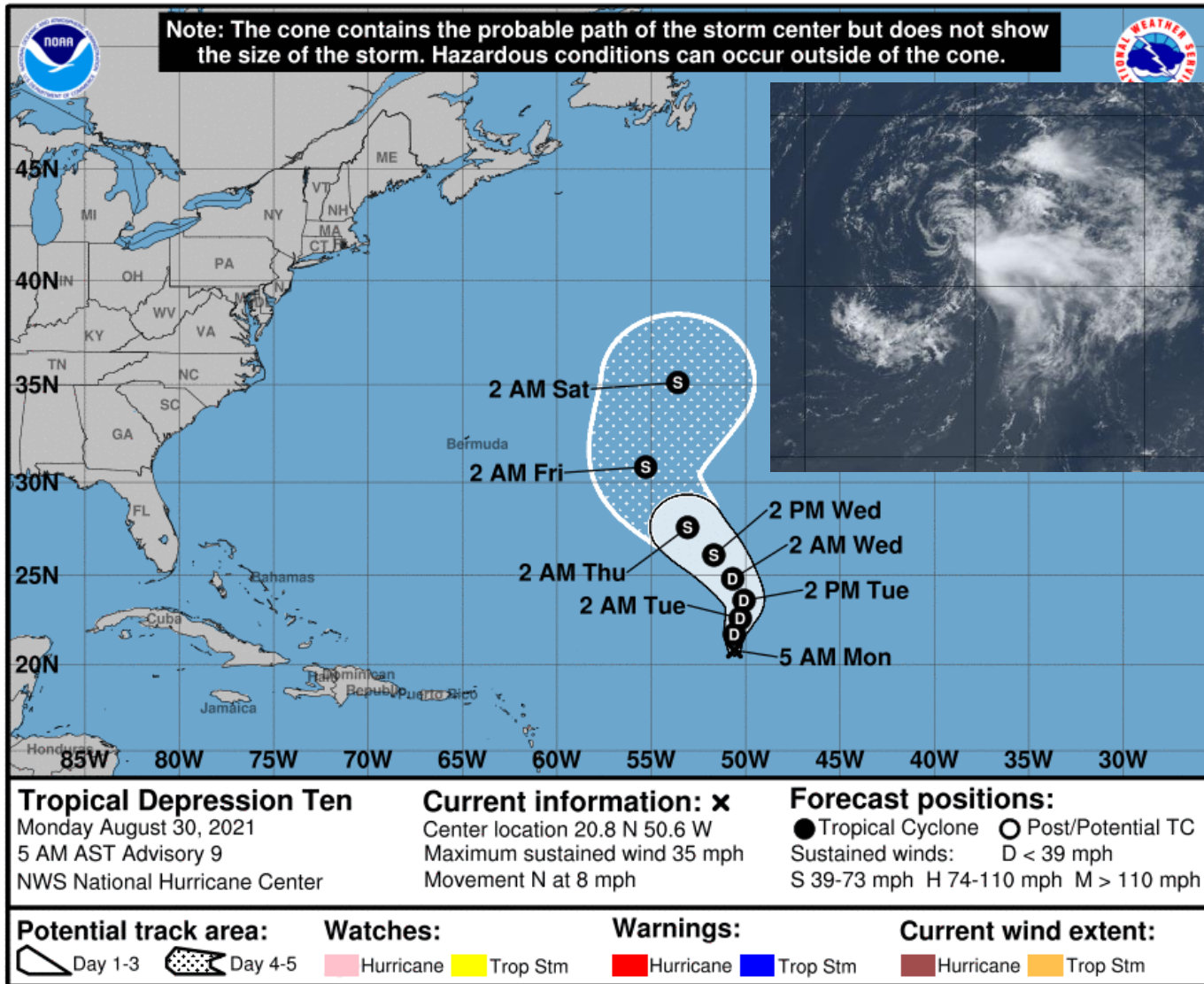
A high risk of rip currents is expected at most Gulf Coast beaches today. Many Panhandle beaches have double red flags flying meaning beaches are closed!





Official Forecast Track

From the National Hurricane Center – TS Kate



- **Location:** 750 miles east-northeast of the Lesser Antilles; 1,900 miles east-southeast of Miami, FL
- **Maximum sustained winds:** 45 mph.
- **Movement:** N at 8 mph.
- **Forecast:** A general northward motion is forecast to continue through Monday followed by a gradual turn toward the northwest by Wednesday. Gradual additional strengthening is possible.
- This system poses no threat to Florida.



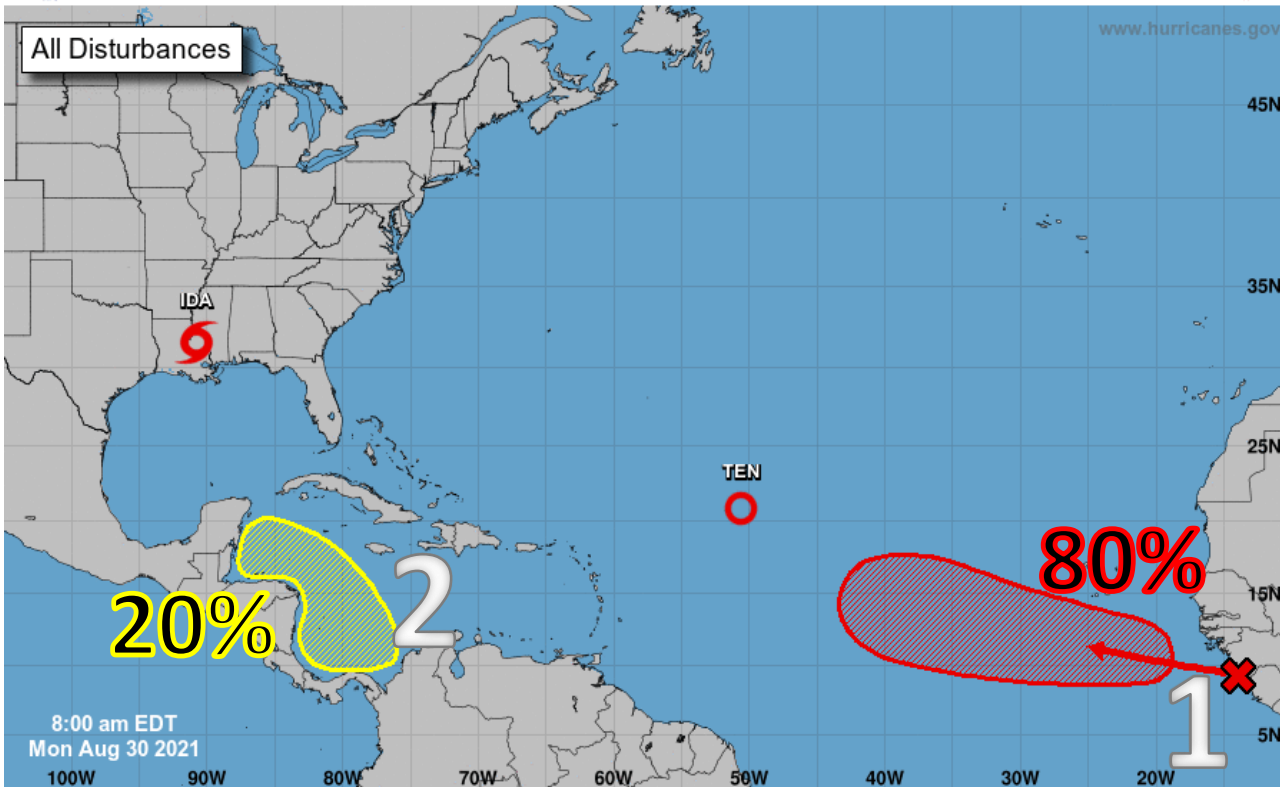
Tropical Weather Outlook

Possible Areas of Development During the Next 5 Days ([LINK](#))



Five-Day Graphical Tropical Weather Outlook

National Hurricane Center Miami, Florida



Current Disturbances and Five-Day Cyclone Formation Chance: < 40% 40-60% > 60%
Tropical or Sub-Tropical Cyclone: Depression Storm Hurricane
 Post-Tropical Cyclone or Remnants

1. A tropical wave near the west coast of Africa is expected to move over the eastern Atlantic later today. Conditions appear conducive for development, and a tropical depression is likely to form by the middle or latter part of the week while the system moves west-northwestward at 10 to 15 mph.

*** Formation chance through 48 hours...medium...60 percent.**

*** Formation chance through 5 days...high...80 percent.**

2. A broad area of low pressure is expected to form in the southern Caribbean Sea over the next several days. Environmental conditions appear to be favorable for some slow development by the end of the week, as long as the system remains over water. This system is expected to move gradually west-northwestward or northwestward at 5 to 10 mph over the western Caribbean Sea close to the east coast of Central America.

*** Formation chance through 48 hours...low...near 0 percent.**

*** Formation chance through 5 days...low...20 percent.**

These systems pose no threat to Florida over the next 5 days.



Model Forecast Tracks – Next 6 Days

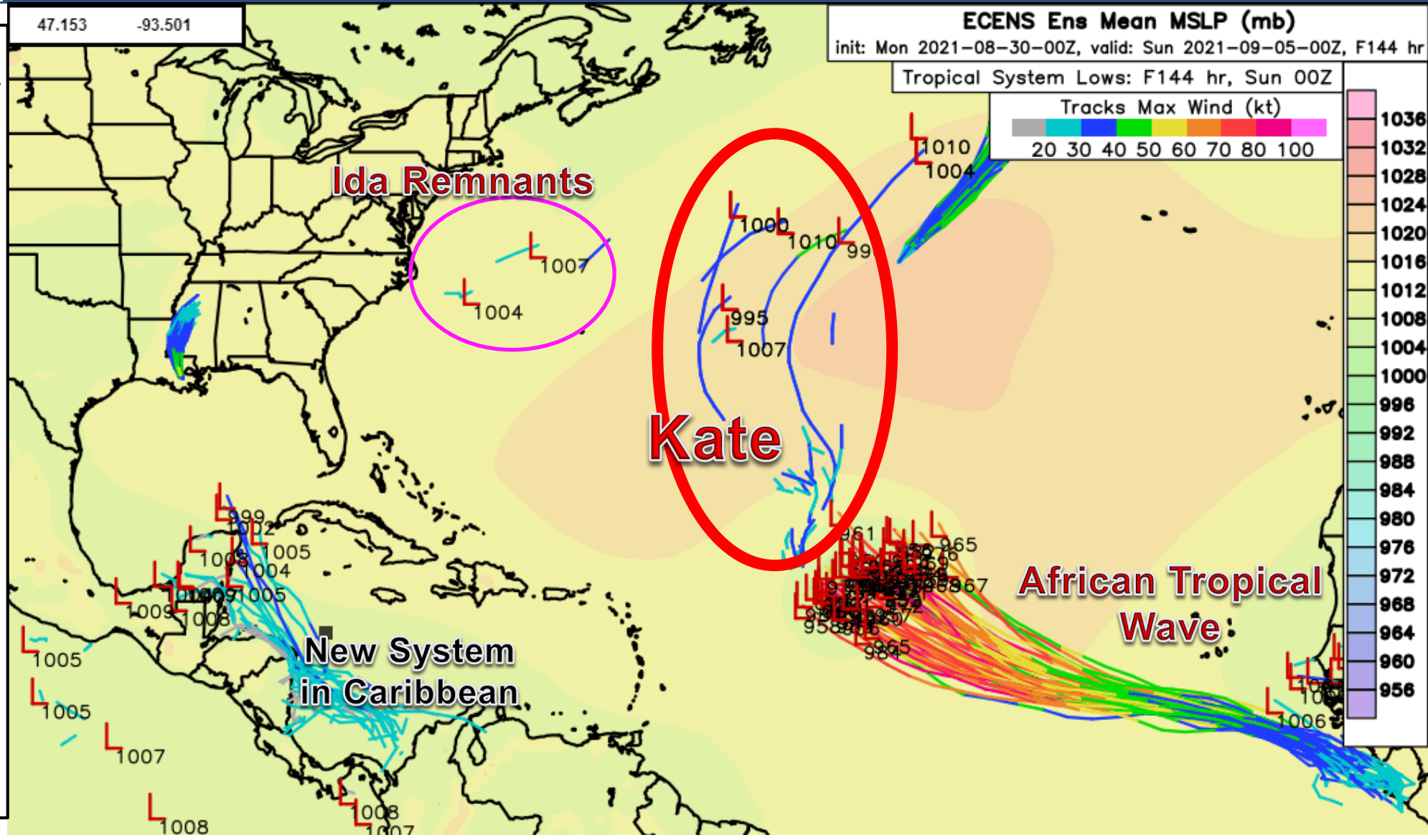
European Ensemble Models

Possible locations of all tropical systems on Sunday 9/5.

The tropical wave coming off of Africa will still be far from land.

Ten will be moving northward toward colder waters.

The Caribbean tropical wave will remain close to Central America this week and possible emerge into the south-central Gulf of Mexico or Bay early next week.





Overall Summary

Tropical Storm Ida:

- Ida is now moving inland over southwestern Mississippi, with the center (as of 8am EDT Monday) located 65 miles south-southwest of Jackson, MS, or 225 miles northwest of Pensacola, Florida.
- Maximum sustained winds have decreased to 45mph and additional weakening is expected, becoming a tropical depression later today.
- Ida is moving to the north around 8 mph, but a turn to the northeast is expected later today. A faster northeast motion is expected by Wednesday, exiting the Mid-Atlantic or New England Coast on Thursday.

Tropical Storm Kate:

- At 9:30 am EDT Friday, Tropical Depression Ten was upgraded to Tropical Storm Kate while located 750 miles east-northeast of the Lesser Antilles, or about 1,900 miles east-southeast of Miami, FL.
- Kate is moving north over open water, and this general motion will continue over the next 2 days, followed by a turn to the northwest by Wednesday.
- Maximum sustained winds have increased to 45mph. Slow strengthening is possible over the next 5 days.

Tropical Storm Julian:

- Tropical Storm Julian became a post-tropical low late Sunday night and advisories have been discontinued on the system.

African Tropical Wave:

- Computer models indicate that a vigorous tropical wave will emerge from the western coast of Africa Monday or Tuesday. Conditions are favorable for development and there is a high chance (80%) a tropical depression develops over the next 2-5 days.
- This system will move west-northwest over the eastern and central Atlantic over the next 5-7 days.

Western Caribbean Low:

- An area of low pressure is expected to develop near the coast of Honduras later this week. There is currently a low chance (20%) of becoming a depression within the next 5 days, but chances could increase later in the week as the system begins to take shape.

The next names on the storm name list are Larry and Mindy.



Overall Summary

Florida Outlook:

- There are currently no tropical storm watches or warnings for Florida, but breezy winds of 20-35 mph with gusts up to 45mph are possible over the Florida Panhandle, especially near the coast, through the day on Tuesday, where a **Wind Advisory** is in effect.
- Gusts of 50-60 mph and isolated tornadoes will be possible from severe thunderstorms within the outer bands of Ida.
- A **Tornado Watch** is in effect for Escambia, Santa Rosa, and Okaloosa County until 4 PM CT. Additional tornado watches could be issued tonight.
- The main threat for Florida from Ida continues to be the potential for heavy rain resulting in flash flooding.
- A **Flash Flood Watch** is in effect for much of the Florida Panhandle through Tuesday evening.
- An additional 4-8" of rain is forecast over the next 72 hours, with localized totals up to 10" possible.
- Rainfall amounts of 2-4" are forecast for the western Big Bend and Eastern Panhandle, with localized totals of 6-8". An isolated flash flood is still possible in this area on Tuesday.
- Minor river flooding is possible in the western Panhandle later this week.
- Along the Panhandle coast, high waves of 4-8' will continue a high threat for rip currents and minor coastal flooding.
- A **High Surf Warning** is in effect for Escambia, Santa Rosa and Okaloosa Counties through Monday, with a **High Surf Advisory** in effect for Walton and Bay Counties.
- A **Coastal Flood Advisory** is in effect from Escambia to Okaloosa County. Minor flooding is possible at high tide.
- None of the other active or potential tropical systems pose a threat to Florida within the next 7 days.

The next briefing packet will be issued Tuesday. For the latest information, please visit the National Hurricane Center website at www.hurricanes.gov.



TROPICAL UPDATE



Created by:

Amy Godsey, Chief State Meteorologist

Amy.Godsey@em.myflorida.com

State Meteorological Support Unit

Florida Division of Emergency Management

Users wishing to subscribe (approval pending) to this distribution list, register at:

https://public.govdelivery.com/accounts/FLDEM/subscriber/new?topic_id=SERT_Met_Tropics.

Other reports available for subscription are available at:

<https://public.govdelivery.com/accounts/FLDEM/subscriber/new?preferences=true>