



TROPICAL UPDATE



11:00 AM EDT

Friday, August 6, 2021

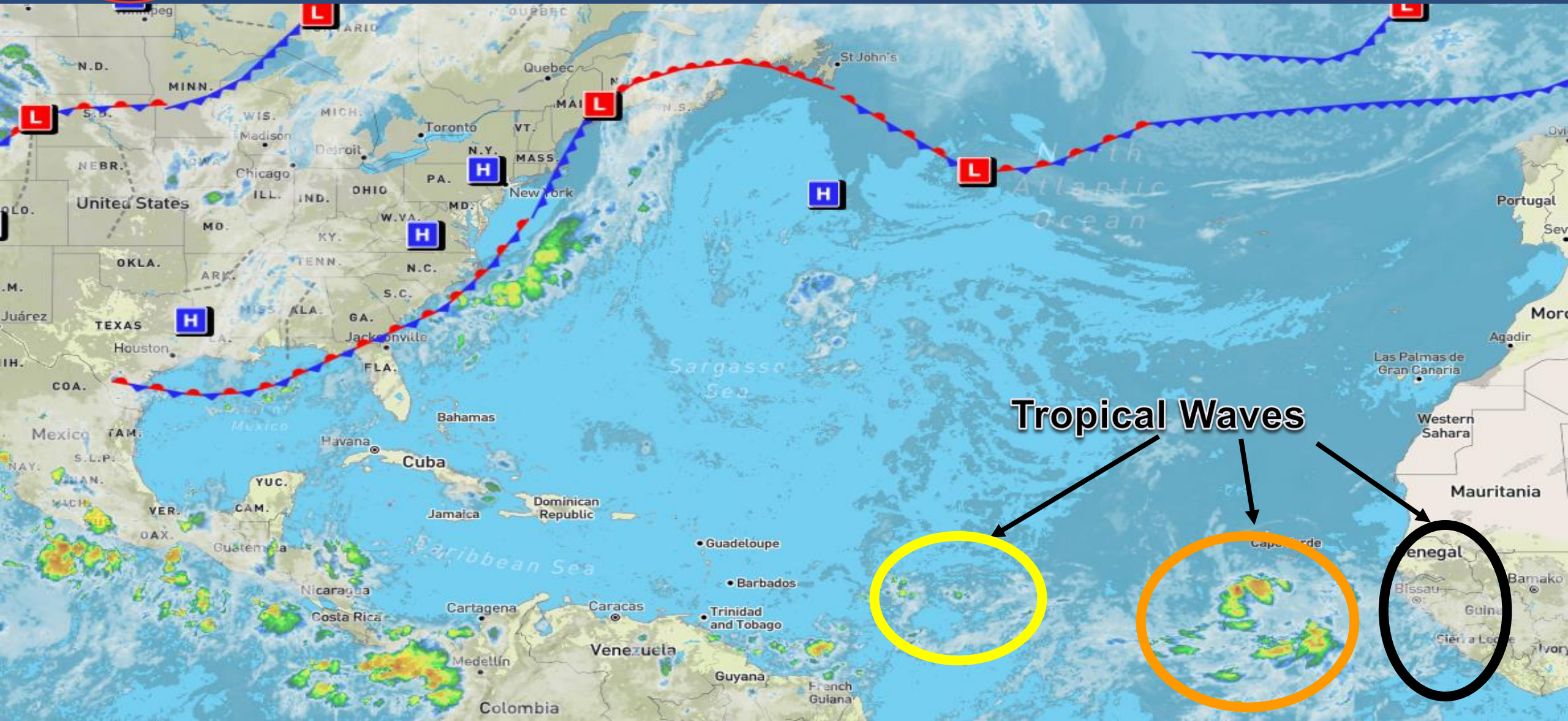
Invest 92L (60%) – Eastern Atlantic
& Central Atlantic Wave (20%)

This update is intended for government and emergency response officials, and is provided for informational and situational awareness purposes only. Forecast conditions are subject to change based on a variety of environmental factors. For additional information, or for any life safety concerns with an active weather event please contact your County Emergency Management or Public Safety Office, local National Weather Service forecast office, or visit the National Hurricane Center website at www.hurricanes.gov.



Atlantic Basin Satellite Image

Chance of development: — None — Low — Medium — High





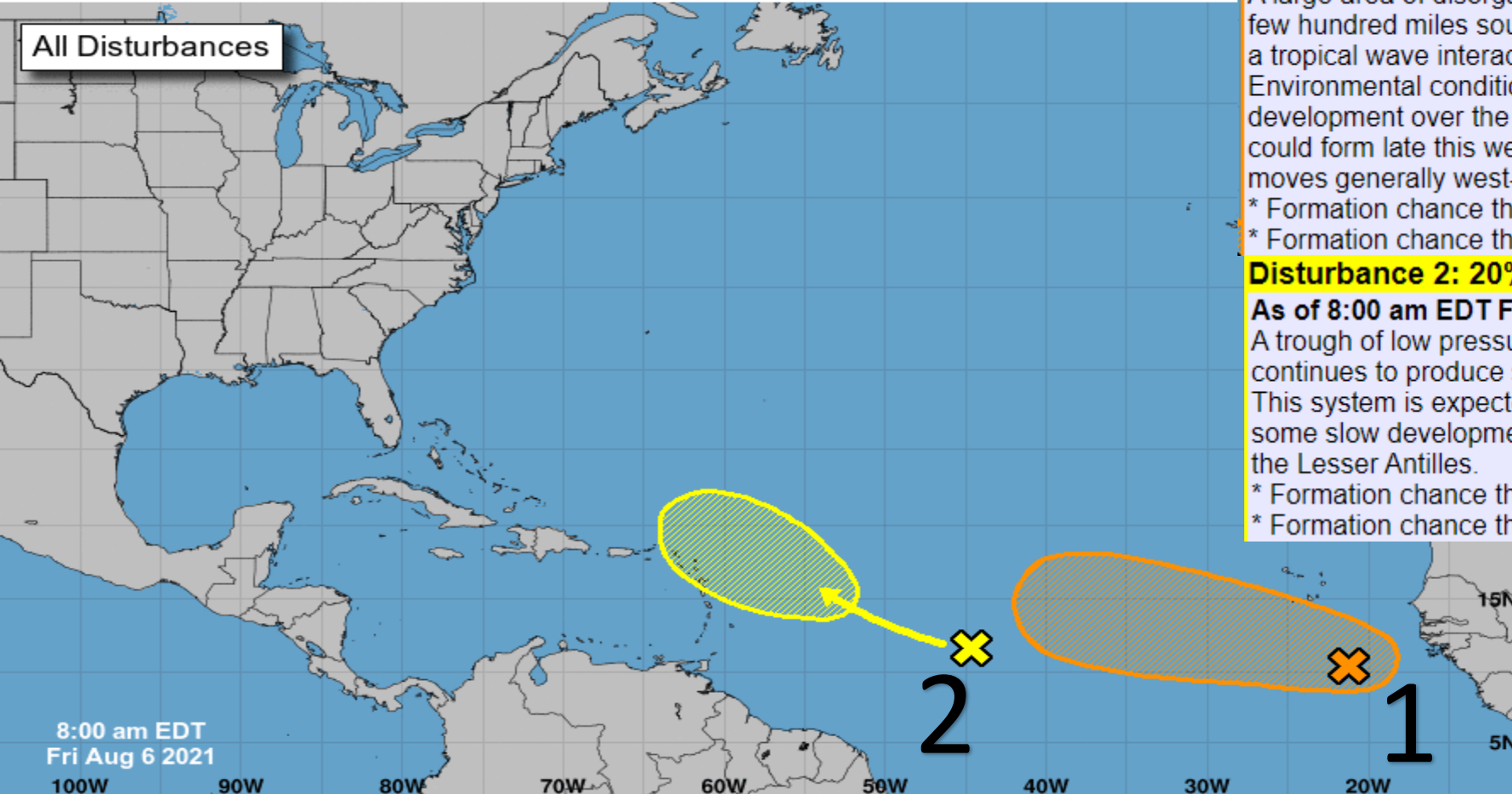
Tropical Weather Outlook

Possible Areas of Development During the Next 5 Days ([LINK](#))



Five-Day Graphical Tropical Weather Outlook

National Hurricane Center Miami, Florida



All Disturbances

8:00 am EDT
Fri Aug 6 2021

Current Disturbances and Five-Day Cyclone Formation Chance:
 Tropical or Sub-Tropical Cyclone:
 < 40% 40-60% > 60%
 Depression Storm Hurricane
 Post-Tropical Cyclone or Remnants

Disturbance 1: 60% Chance of Cyclone Formation in 5 Days

As of 8:00 am EDT Fri Aug 6 2021 ...

A large area of disorganized cloudiness and thunderstorms located a few hundred miles south of the Cabo Verde Islands is associated with a tropical wave interacting with a broader surface trough.

Environmental conditions appear somewhat conducive for gradual development over the next several days, and a tropical depression could form late this weekend or early next week while the system moves generally west-northwestward across the tropical Atlantic.

* Formation chance through 48 hours...low...30 percent.

* Formation chance through 5 days...medium...60 percent.

Disturbance 2: 20% Chance of Cyclone Formation in 5 Days

As of 8:00 am EDT Fri Aug 6 2021 ...

A trough of low pressure located over the central tropical Atlantic continues to produce some disorganized showers and thunderstorms. This system is expected to move slowly west-northwestward, and some slow development is possible early next week as it approaches the Lesser Antilles.

* Formation chance through 48 hours...low...near 0 percent.

* Formation chance through 5 days...low...20 percent.

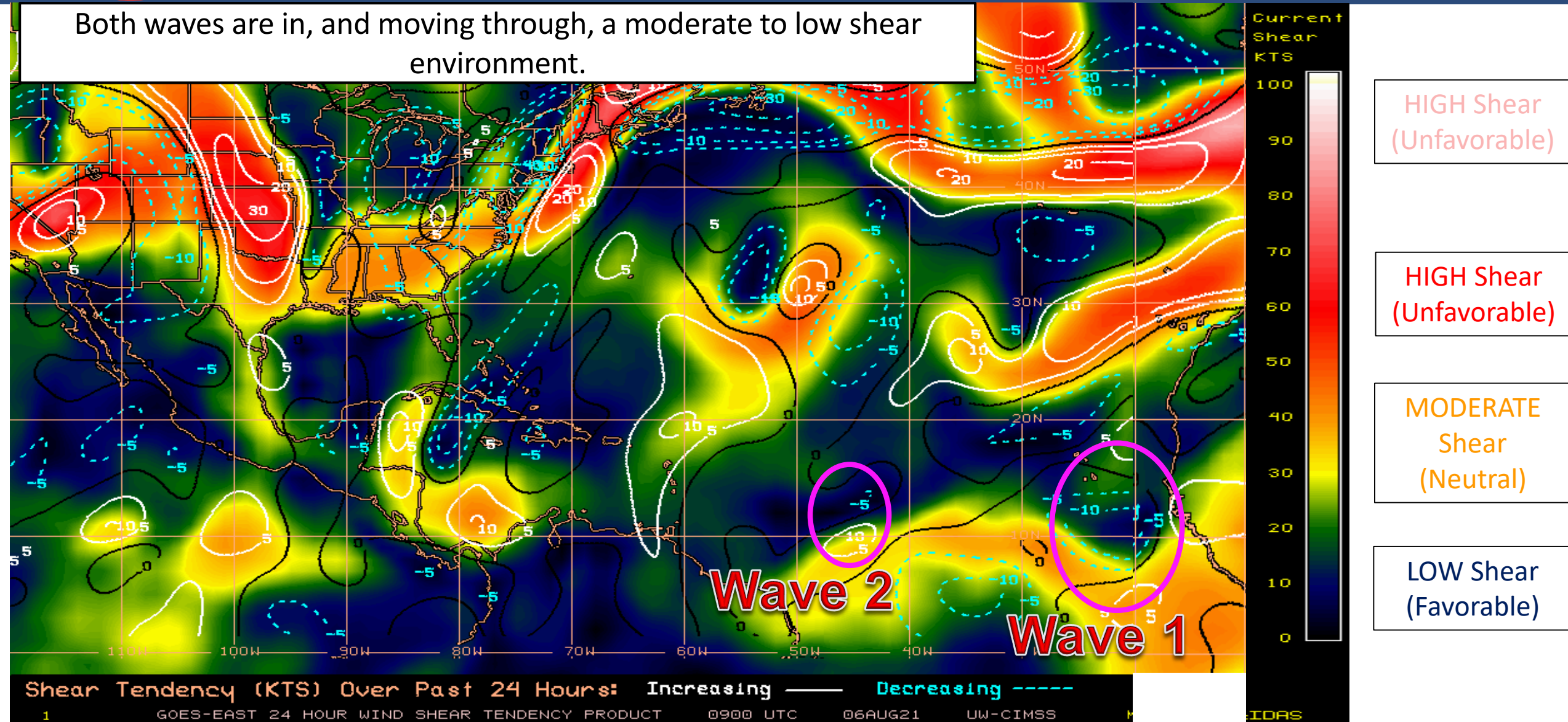


Wind Shear

Is the environment favorable for the system?

Both waves are in, and moving through, a moderate to low shear environment.

Color denotes the amount of wind shear and the lines denote how it have changed over the last 24 hours (dotted lines show decreasing shear and solid lines show increasing).



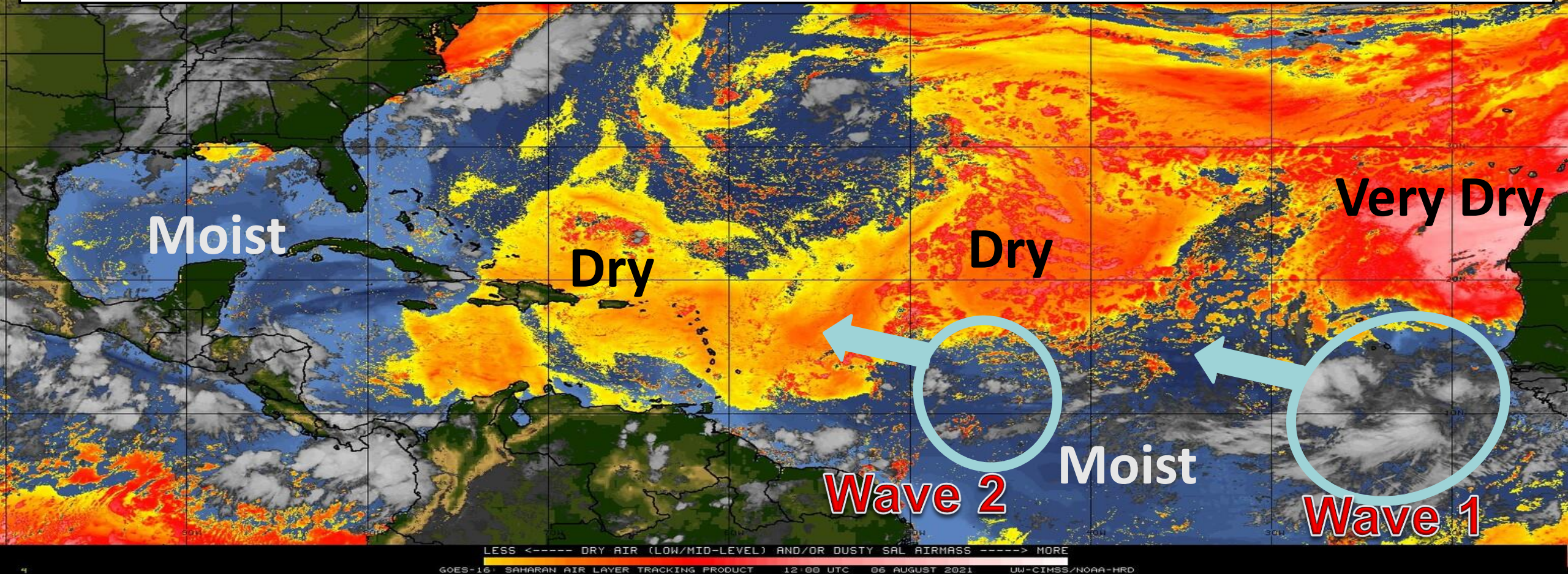


Dry Air & Saharan Dust

Is the environment favorable for the system?

Color denotes concentration of Saharan Dust or dry, stable air.

The leading tropical wave in the central Atlantic is encountering dry air to its north and moving into an area of somewhat dry air. The dry air will abate once it moves past the Leeward Islands and towards the Bahamas. The trailing tropical wave moving off Africa will have less dry air to contend with in the short-term as the preceding tropical waves act as a buffer to the dry air, but may encounter increasing dry air next week.



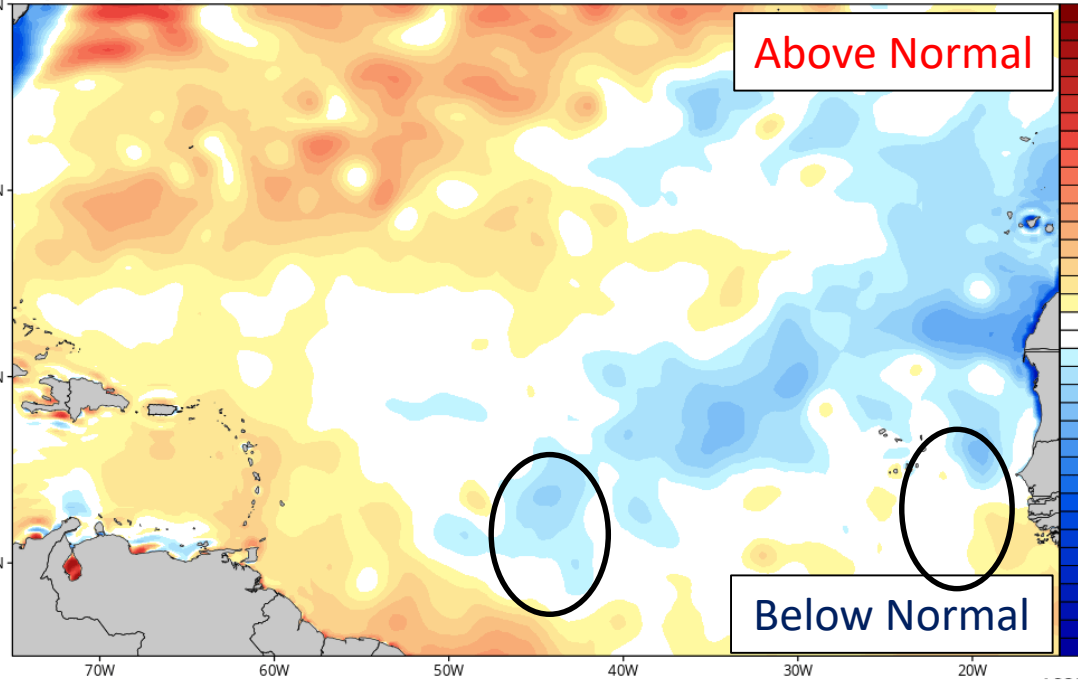


Sea Surface Temperatures & Anomalies

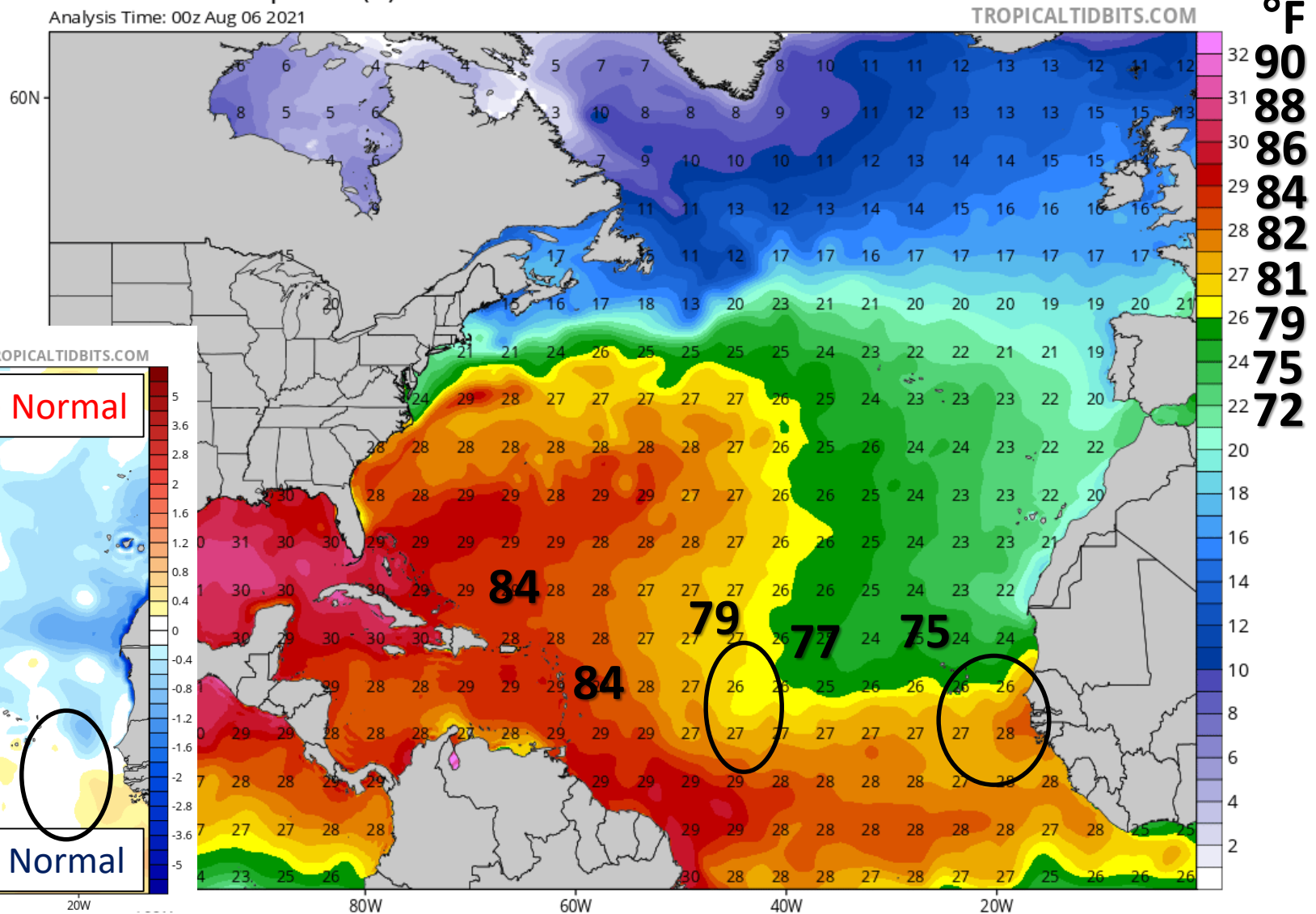
Is the ocean favorable for the system?

While water temperatures near both waves are below normal, they are warm enough to support tropical development.

CDAS Sea Surface Temperature Anomaly (°C) (based on CFSR 1981-2010 Climatology)
Analysis Time: 00z Aug 06 2021



CDAS Sea Surface Temperature (°C)
Analysis Time: 00z Aug 06 2021



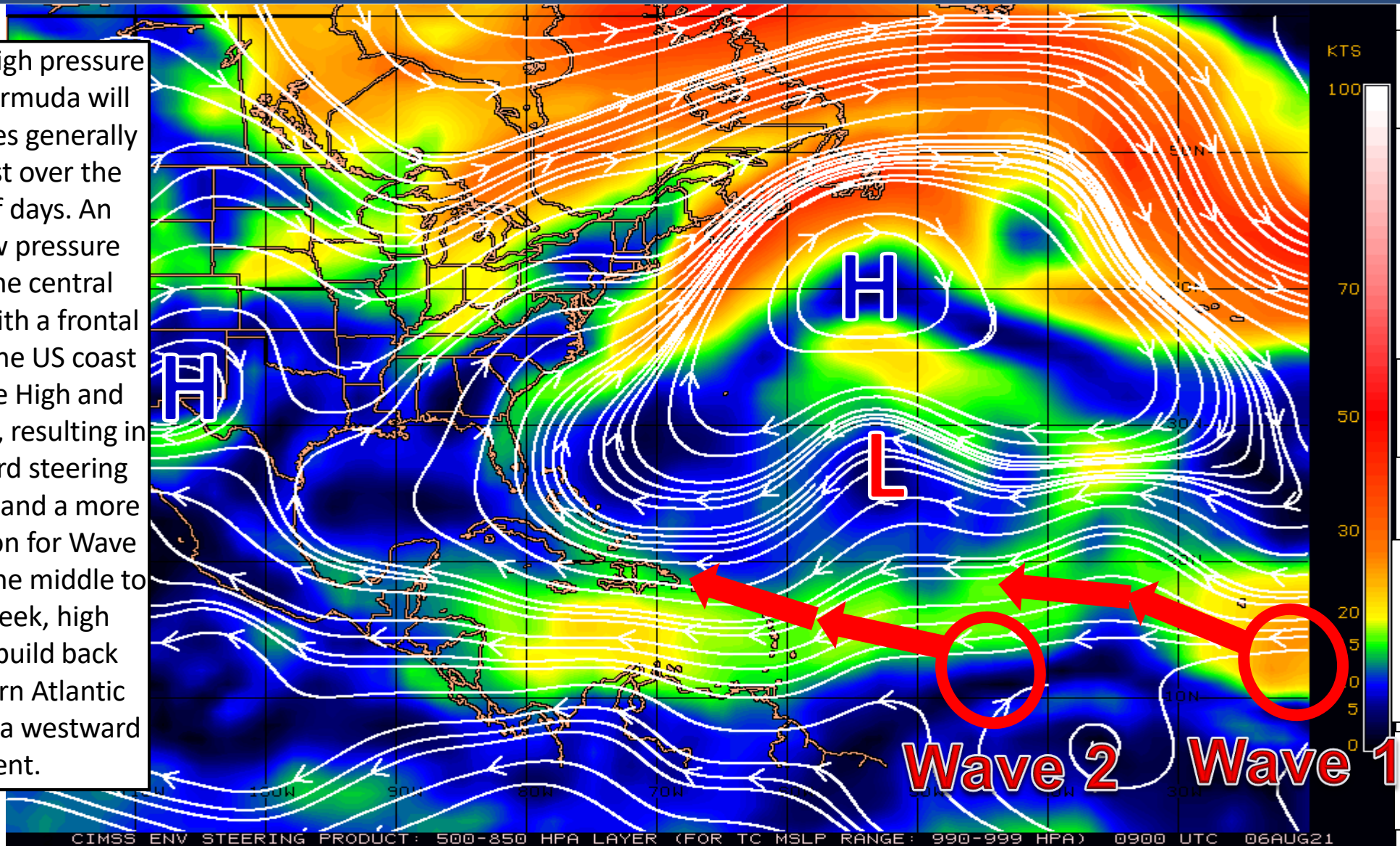


Steering Currents

What is Moving the System?

Color denotes the movement speed through the atmosphere and thin white lines denote direction. Tightly clustered white lines represent faster movement as well.

A large area of high pressure northeast of Bermuda will move both waves generally west-northwest over the next couple of days. An upper level low pressure system over the central Atlantic along with a frontal system exiting the US coast will weaken the High and push it eastward, resulting in a northwestward steering flow for Wave 2 and a more westward motion for Wave 1. However, by the middle to end of next week, high pressure may build back over the western Atlantic and may induce a westward movement.



Fast Steering Flow

Fast Steering Flow

Moderate/
Typical
Steering Flow
Speed

Slow Steering Flow

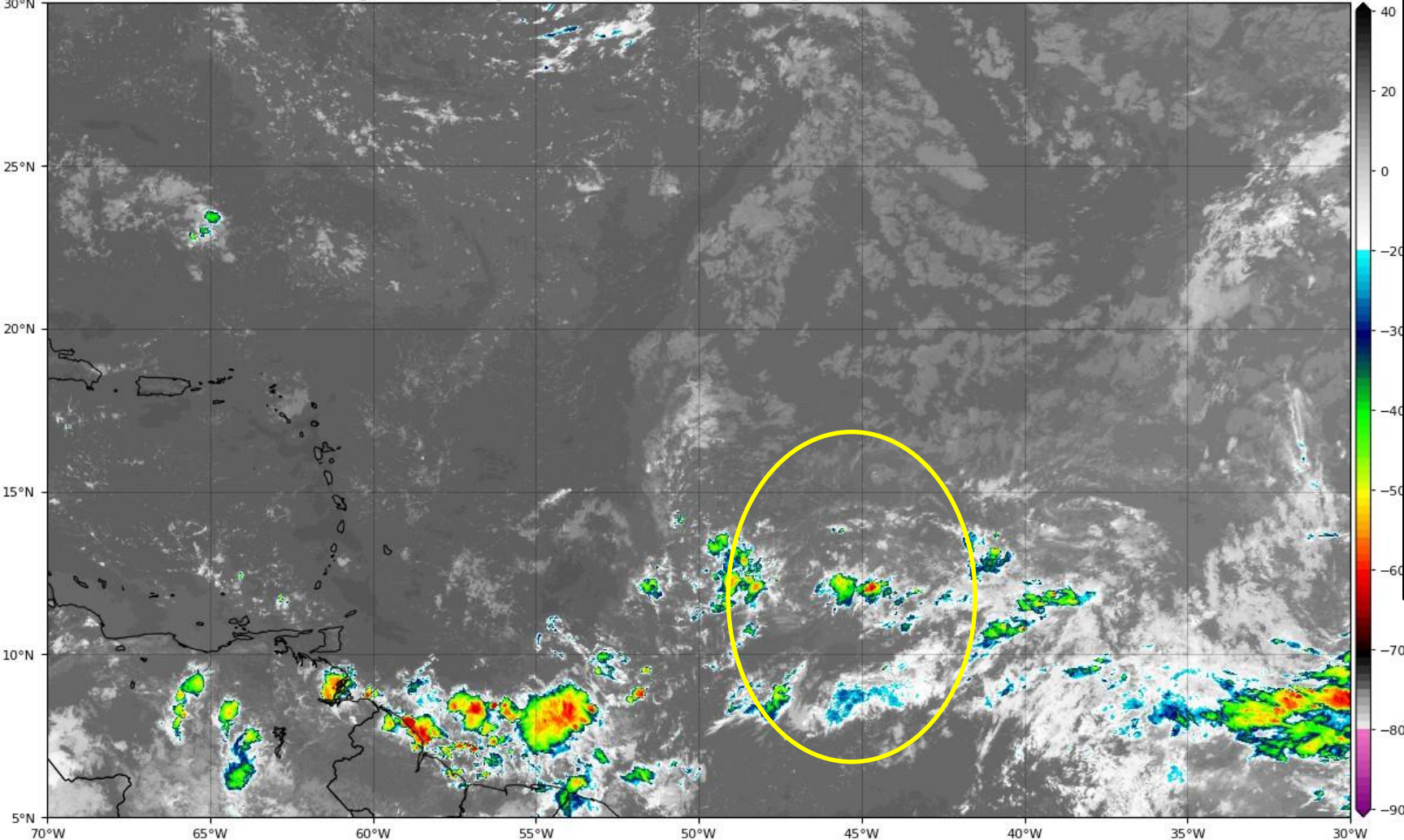


Satellite Imagery

Central Atlantic Wave

GOES-16 Channel 13 (IR) Brightness Temperature (°C) at 12:55Z Aug 06, 2021

TROPICALTIDBITS.COM



A tropical wave located about 1,000 miles east of the Windward Island continues to produce a small area of disorganized showers. While wind shear will weaken as the wave moves west, lingering dry air over much of the central Atlantic should inhibit significant development in the short-term. Slightly more favorable conditions are possible once the wave reaches the southwestern Atlantic later next week.



20%

Chance of Formation

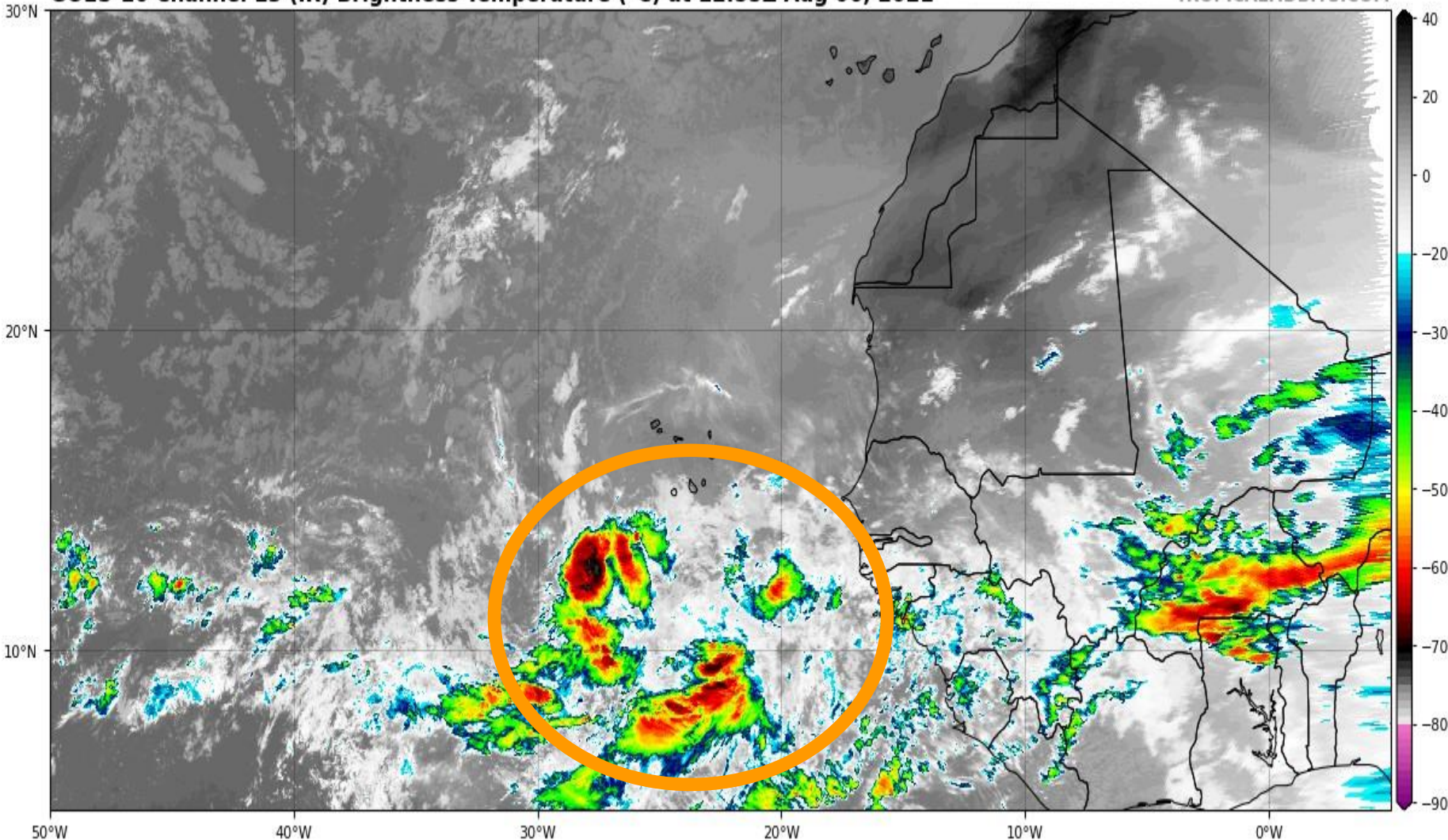


Satellite Imagery

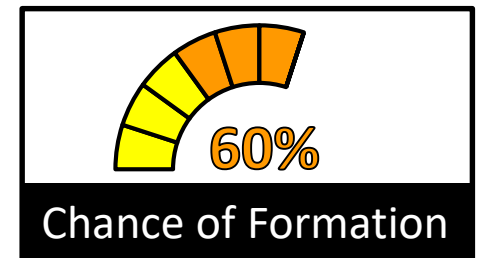
Eastern Atlantic Wave – 92L

GOES-16 Channel 13 (IR) Brightness Temperature (°C) at 12:55Z Aug 06, 2021

TROPICALTIDBITS.COM



A tropical wave near the west coast of Africa is producing a large area of disorganized showers and storms. If a more defined area of low pressure can develop, this system could become a tropical depression. However, longer-range models suggest a weakening trend is likely as it reaches the central Atlantic.





Overall Summary

Invest 92L – West Coast of Africa

- A large tropical wave, designated as Invest 92L, continues to produce a large area of disorganized storms in the eastern Atlantic Ocean.
- Conditions over the next 5 days are mostly favorable for development, and this system has a **60% (medium) chance** of becoming a tropical depression.
- Computer models keep this system weak while moving west-northwest.

Tropical Wave – Central Atlantic Ocean

- A tropical wave over the central Atlantic Ocean about 1,000 miles east of the Leeward Islands is producing a smaller area of limited storm activity.
- Conditions are somewhat favorable for development, and there is a low (20%) chance of development into a tropical depression within the next 5 days.
- Some computer models suggest conditions could become more favorable for development next week as it moves near the Lesser Antilles.

Florida Outlook:

- Neither system currently poses a threat to Florida within the next 5 days, but should be monitored next week.

Another briefing packet will be issued tomorrow. For the latest information on the tropics, please visit the National Hurricane Center website at www.hurricanes.gov.



TROPICAL UPDATE



Created by:

Amy Godsey, Chief State Meteorologist

Amy.Godsey@em.myflorida.com

State Meteorological Support Unit

Florida Division of Emergency Management

Users wishing to subscribe (approval pending) to this distribution list, register at:

https://public.govdelivery.com/accounts/FLDEM/subscriber/new?topic_id=SERT_Met_Tropics.

Other reports available for subscription are available at:

<https://public.govdelivery.com/accounts/FLDEM/subscriber/new?preferences=true>