



TROPICAL UPDATE



5:00 PM EDT

Wednesday, June 30, 2021

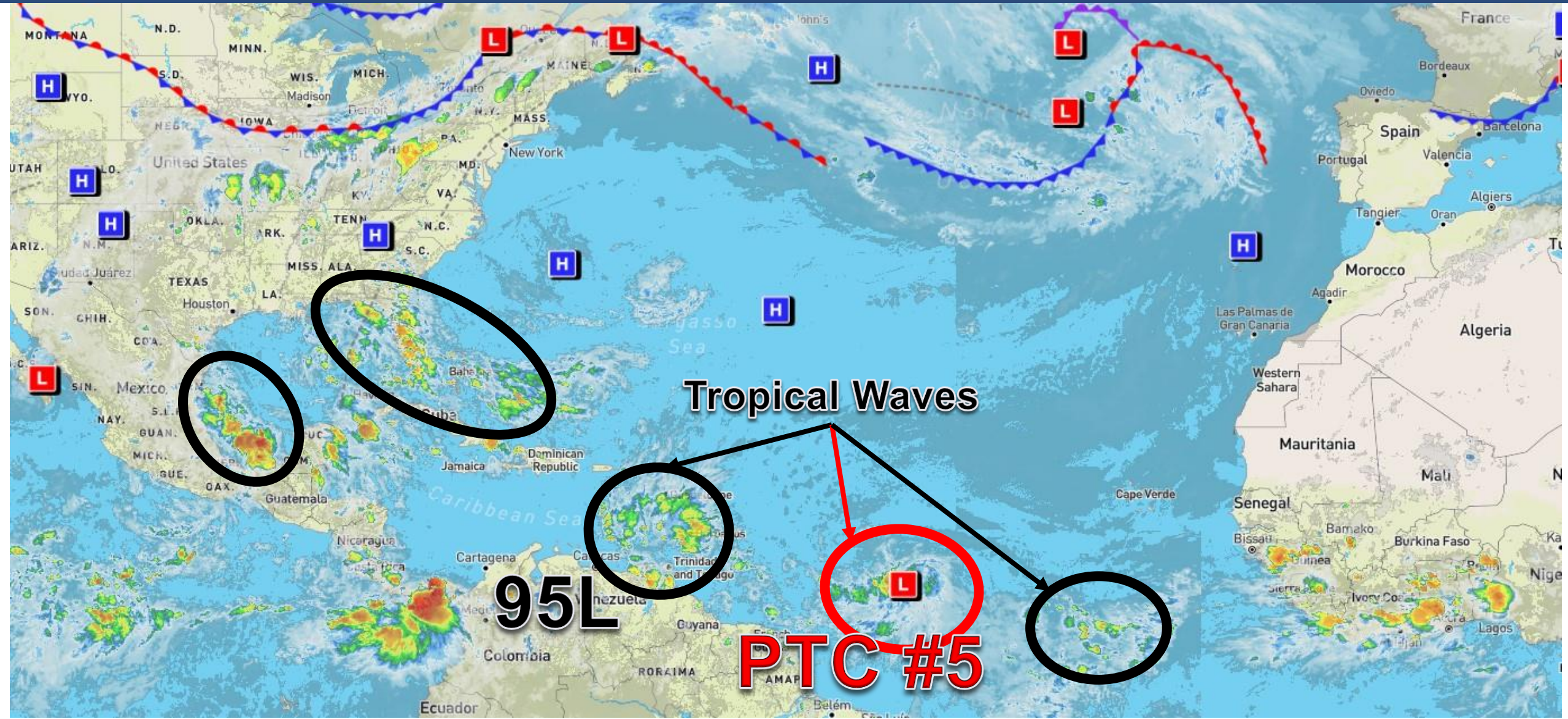
Potential Tropical Cyclone #5

This update is intended for government and emergency response officials, and is provided for informational and situational awareness purposes only. Forecast conditions are subject to change based on a variety of environmental factors. For additional information, or for any life safety concerns with an active weather event please contact your County Emergency Management or Public Safety Office, local National Weather Service forecast office, or visit the National Hurricane Center website at www.hurricanes.gov.



Atlantic Basin Satellite Image

Chance of development: — None — Low — Medium — High





Tropical Weather Outlook

Possible Area of Development During the Next 5 Days ([LINK](#)) – Invest 95L



Five-Day Graphical Tropical Weather Outlook

National Hurricane Center Miami, Florida



www.hurricanes.gov

Disturbance 2

2
(0%)

2:00 pm EDT
Wed Jun 30 2021

Current Disturbances and Five-Day Cyclone Formation Chance: < 40% 40-60% > 60%
Tropical or Sub-Tropical Cyclone: Depression Storm Hurricane
 Post-Tropical Cyclone or Remnants

Showers and thunderstorms continue in association with a tropical wave located over the Lesser Antilles. This system has become less organized since yesterday, and significant development is no longer expected while it moves quickly westward across the Caribbean Sea.

This system does not pose a threat to Florida, and this is likely the last update on this system.

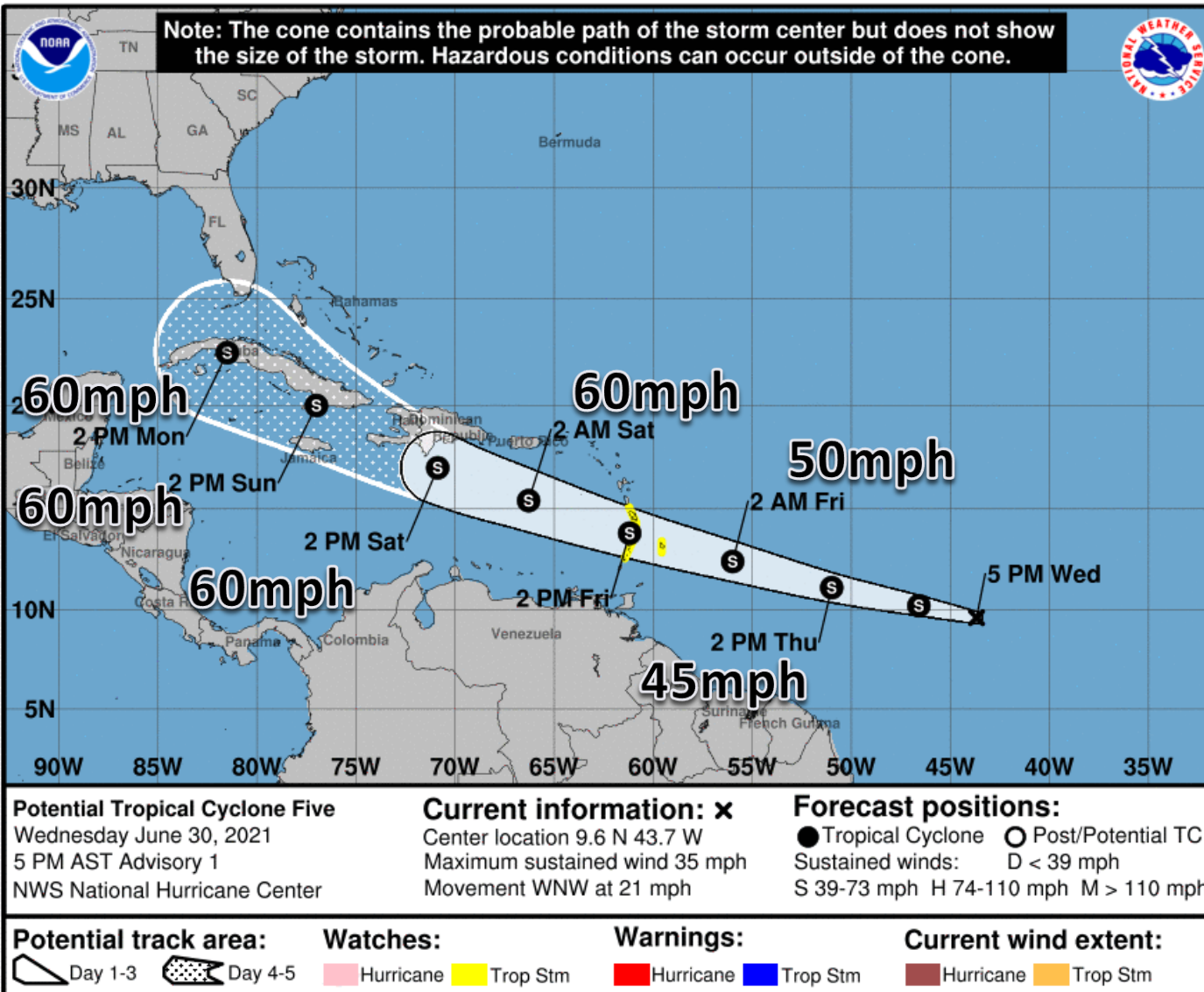
***Formation chance through 48 hours...low...near 0%**

***Formation chance through 5 days...low...near 0%**



Official Forecast Track – PTC #5

From the National Hurricane Center – ([LINK](#))

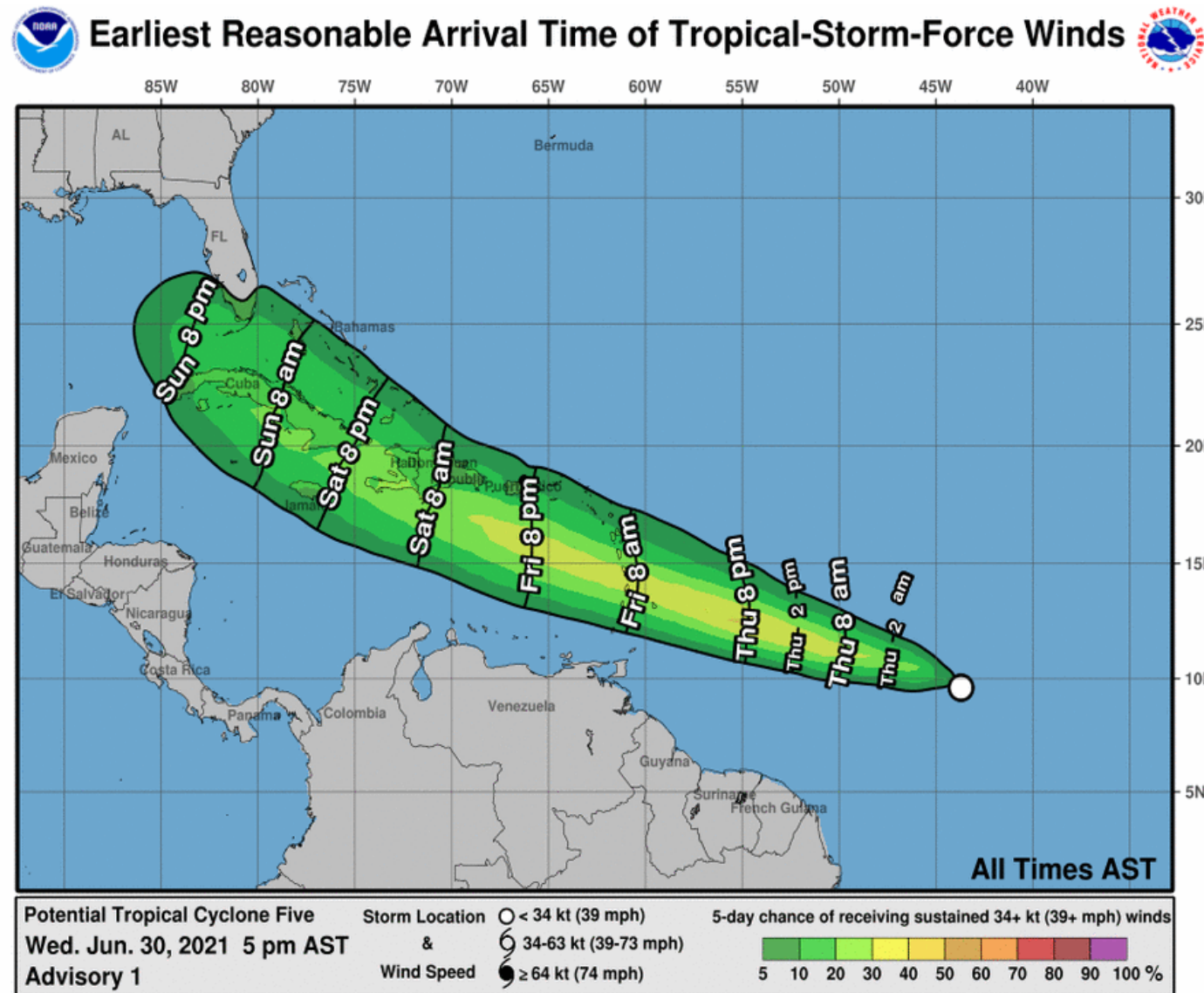


- The tropical wave about midway between the Caribbean and west coast of Africa has continued to organize today. The National Hurricane Center began advisories on Potential Tropical Cyclone Five at 5 PM ET.
- The center of Five is located about 1,100 miles east-southeast of Barbados, or about 2,600 miles southeast of Miami, FL.
- Five is moving to the west-northwest at 21 mph, and this quick forward speed will continue over the next few days.
- Maximum sustained winds are near 35 mph and gradual strengthening is forecast. The system could be near hurricane strength in the Caribbean.



Time of Arrival & Wind Speed Probabilities

EARLIEST REASONABLE Time of Arrival of Tropical Storm Force Winds (>39 mph)



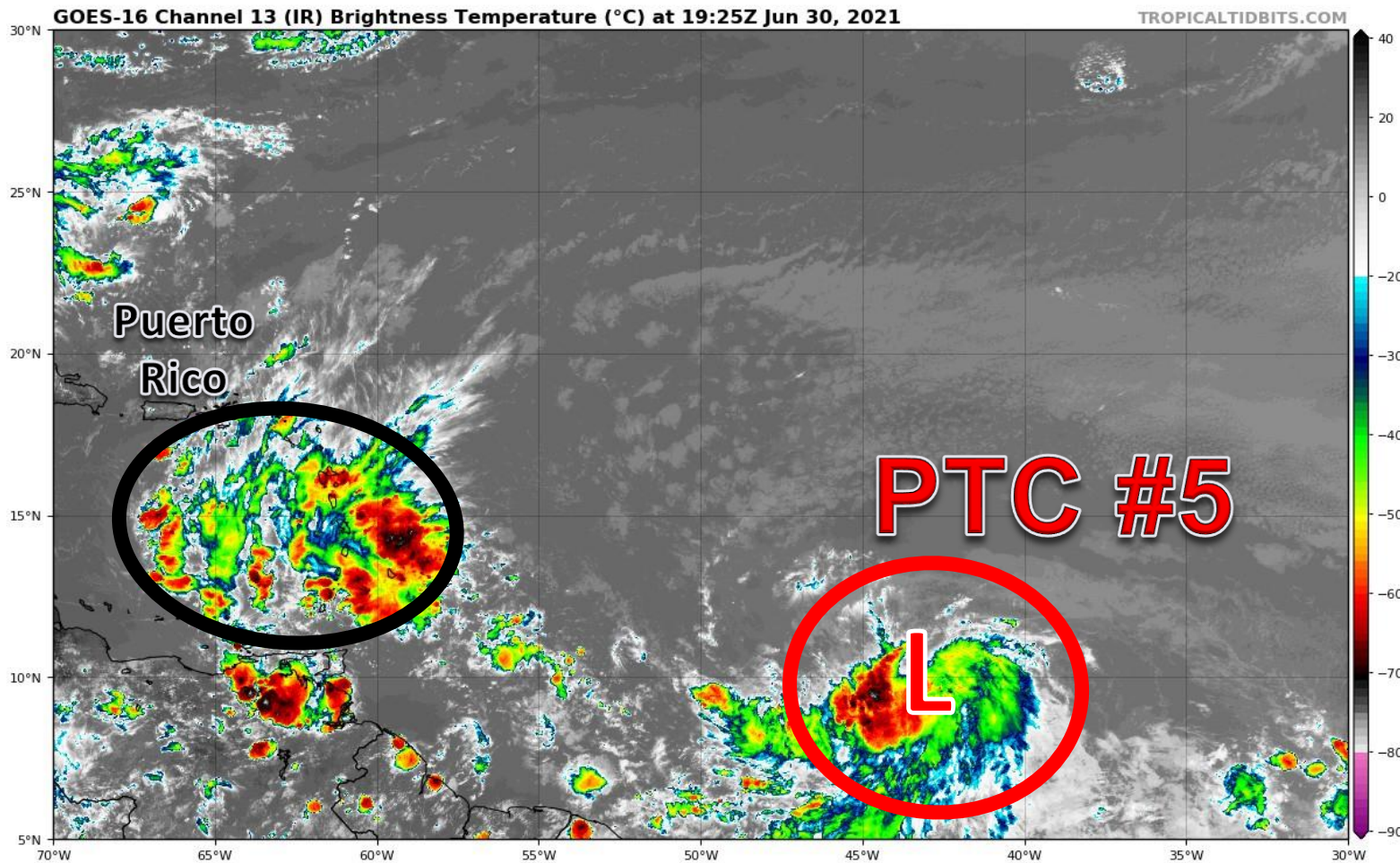
City	Chance for TS Winds	Changes Since Last Packet
Key West	13%	N/A
Marathon	13%	N/A
Naples	7%	N/A
Miami	6%	N/A
Ft. Lauderdale	4%	N/A
West Palm Beach	4%	N/A

There is uncertainty in the forward speed, so as the system gets closer to Florida, the “Earliest Reasonable Time of Arrival” graphic should be used for planning into the holiday weekend.



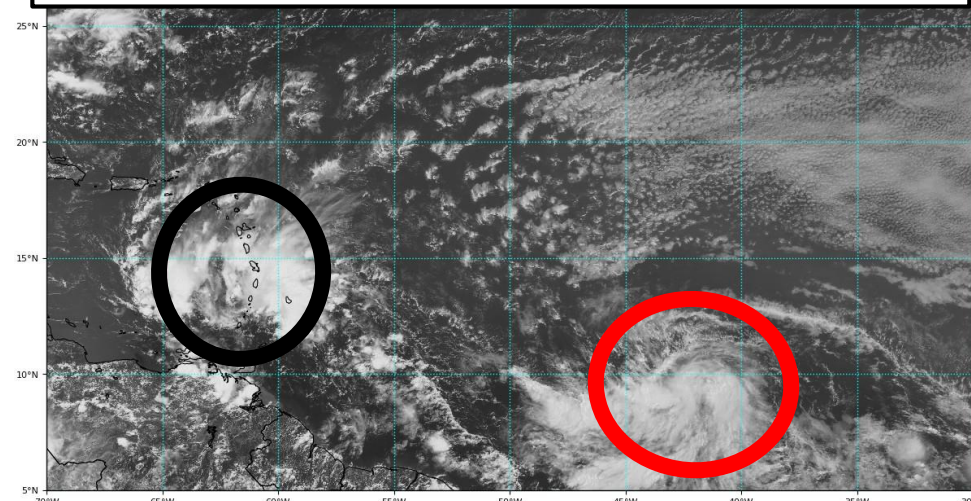
Satellite Imagery

Central Atlantic – Potential Tropical Cyclone Five



Invest 95L remains disorganized as it enters the Caribbean despite numerous showers and thunderstorms.

However, Invest 97L has become more organized today, with nearly a closed circulation and focused thunderstorms around the center. Development into Tropical Storm Elsa is expected within the next 24 hours.



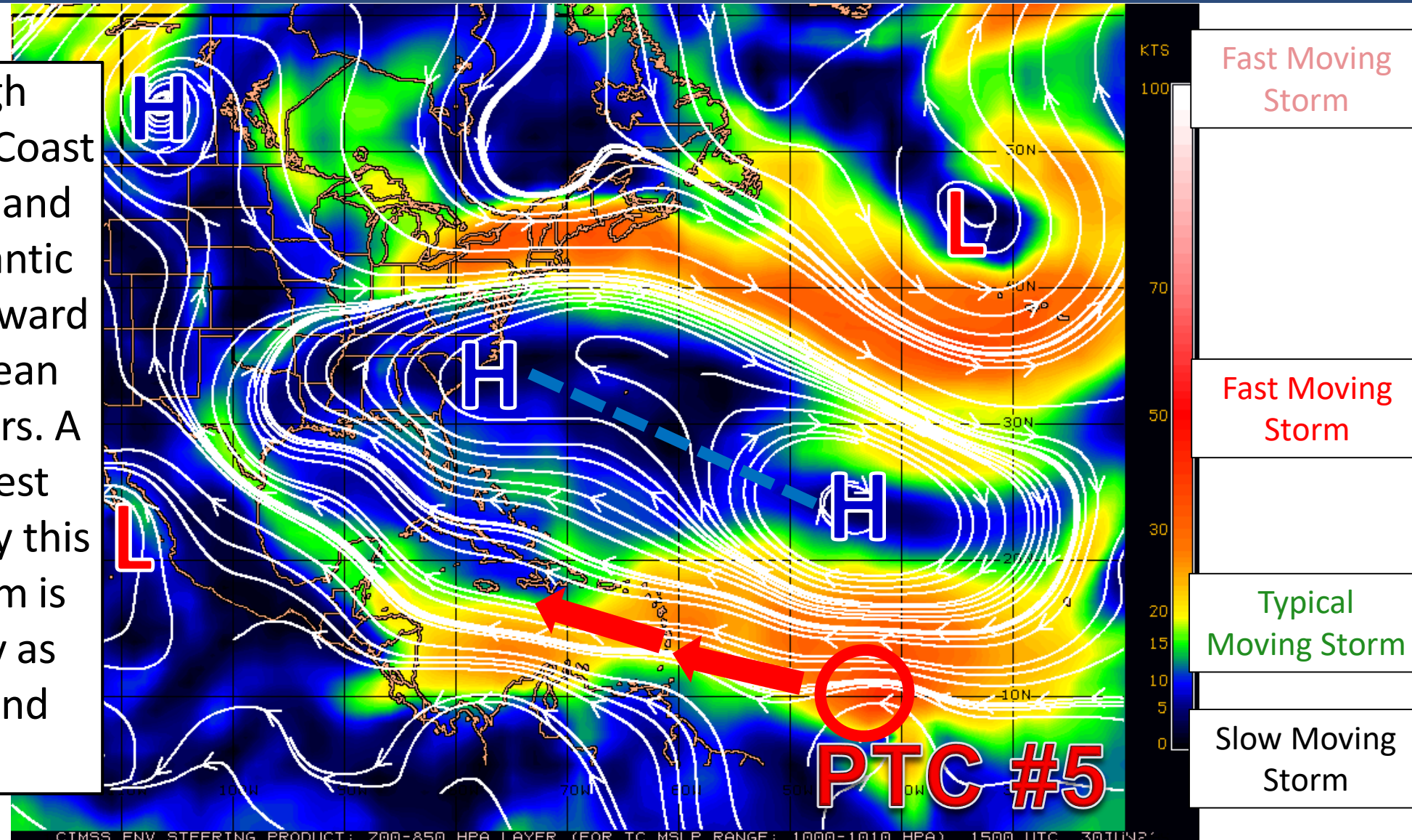


Steering Currents

What is Moving the System?

Color denotes the movement speed through the atmosphere and thin white lines denote direction. Tightly clustered white lines represent faster movement as well.

A large area of high pressure off the East Coast of the United States and over the Central Atlantic will move PTC 5 westward towards the Caribbean over the next 48 hours. A more west-northwest motion is expected by this weekend. The system is moving very quickly as shown by the red and orange shading.



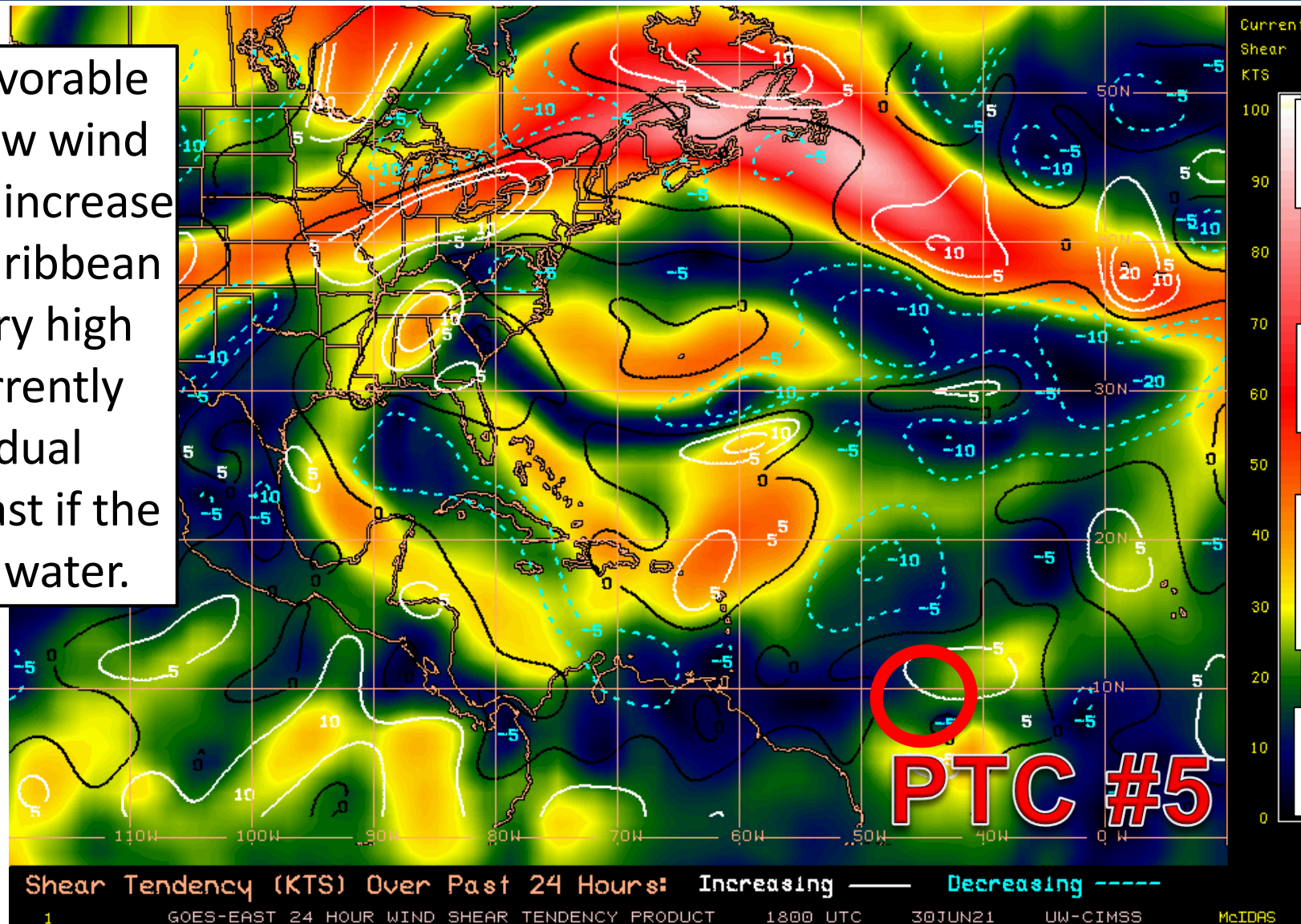


Wind Shear

Is the environment favorable for the system?

Color denotes the amount of wind shear and the lines denote how it have changed over the last 24 hours (dotted lines show decreasing shear and solid lines show increasing).

The environment is favorable around PTC #5 with low wind shear. Wind shear may increase as it moves into the Caribbean this weekend, but very high wind shear is not currently forecast. Thus, gradual strengthening is forecast if the system remains over water.



HIGH Shear
(Unfavorable)

HIGH Shear
(Unfavorable)

MODERATE
Shear
(Neutral)

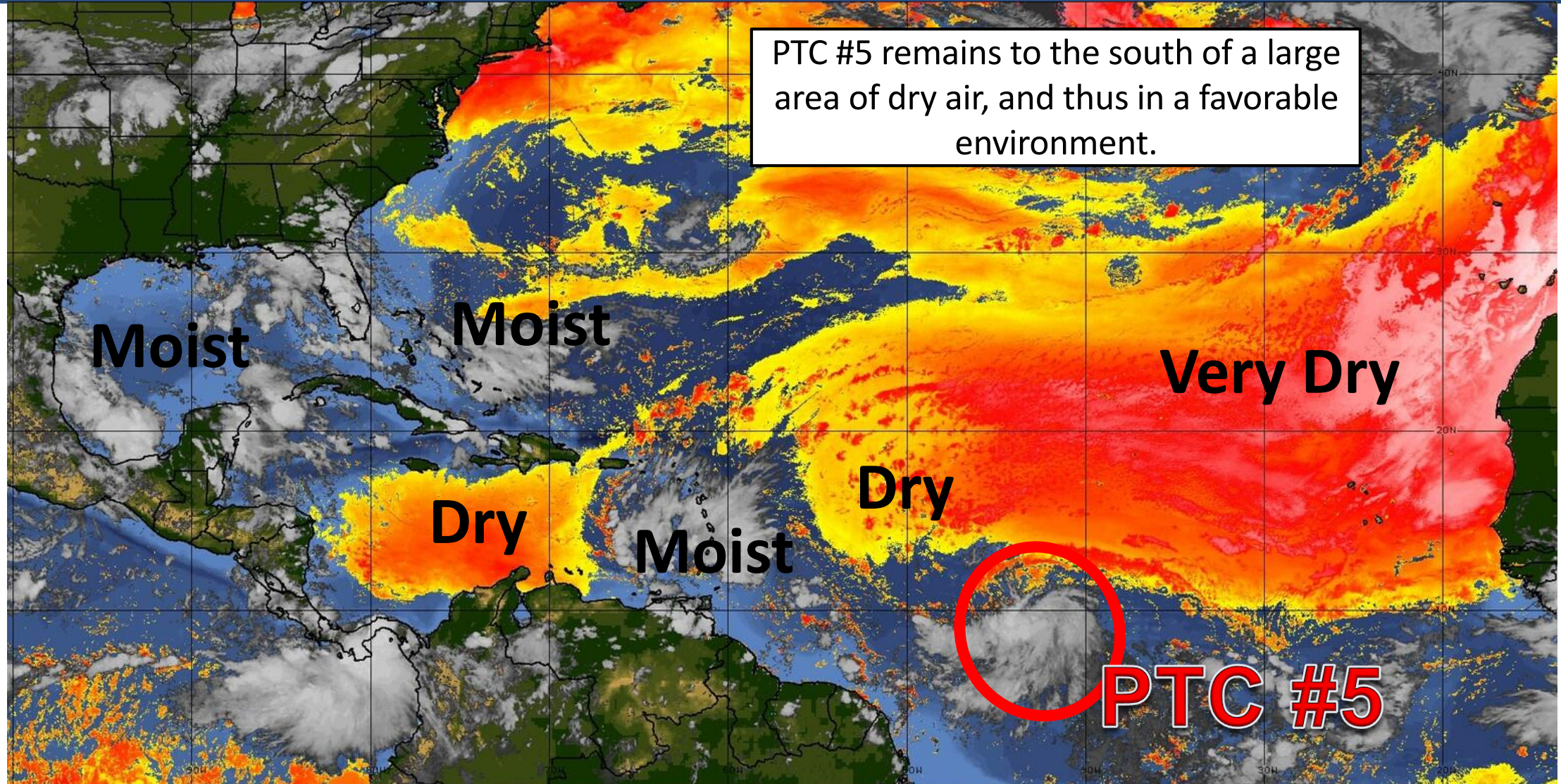
LOW Shear
(Favorable)



Dry Air & Saharan Dust

Is the environment favorable for the system?

Color denotes concentration of Saharan Dust or dry, stable air.



LESS <---- DRY AIR (LOW/MID-LEVEL) AND/OR DUSTY SAL AIRMASS ----> MORE



Sea Surface Temperatures & Anomalies

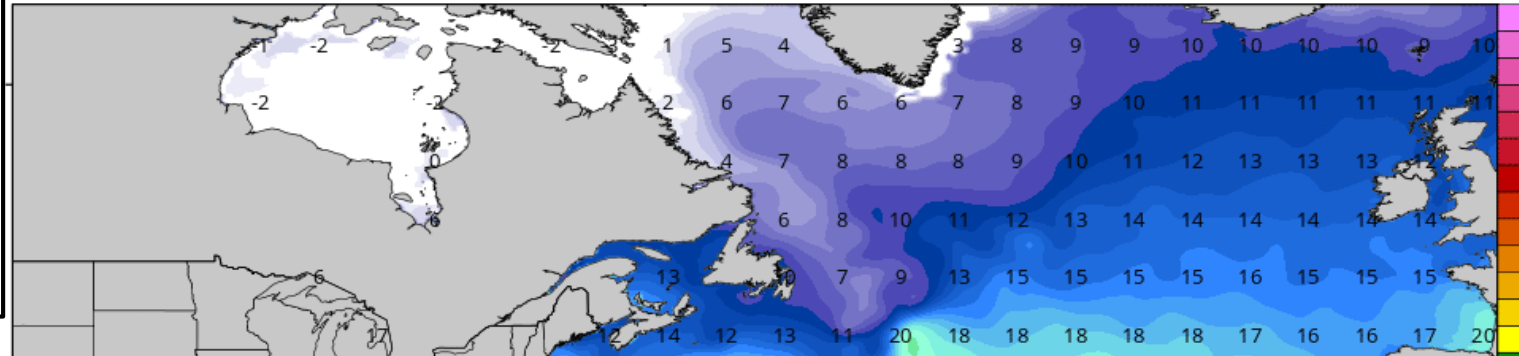
Is the ocean favorable for the system?

Water temperatures will gradually warm and become more favorable for development as the system moves west. Water temperatures would support a hurricane.

CDAS Sea Surface Temperature (°C)

Analysis Time: 12z Jun 30 2021

TROPICALTIDBITS.COM

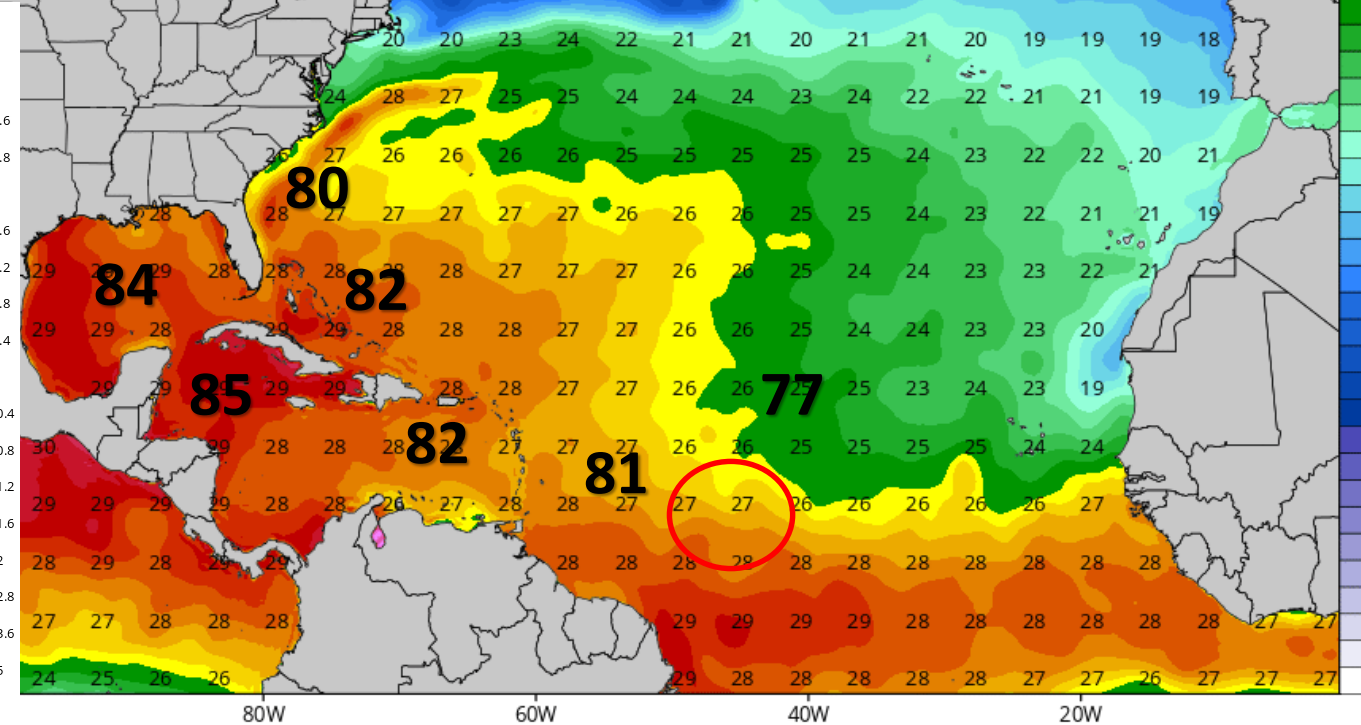
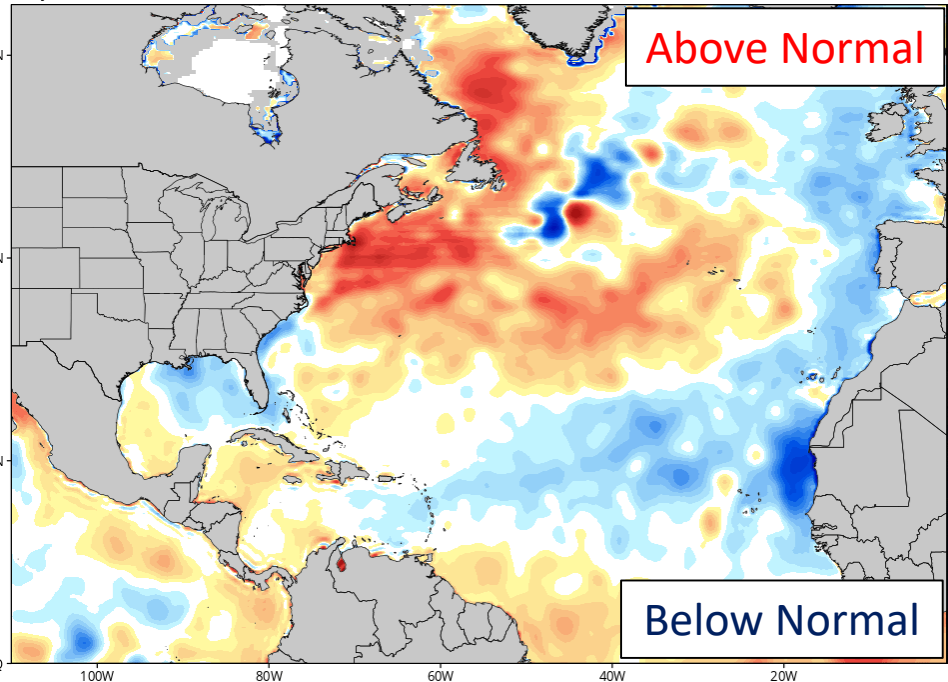


°F
90
88
86
84
82
81
79
75
72

CDAS Sea Surface Temperature Anomaly (°C) (based on CFSR 1981-2010 Climatology)

Analysis Time: 12z Jun 30 2021

TROPICALTIDBITS.COM





Overall Summary

Invest 95L in the Eastern Caribbean

- This system is no longer expected to develop and the National Hurricane Center has 5-day development odds near 0%.

Potential Tropical Cyclone Five (formerly Invest 97L)

- The tropical wave about midway between the Caribbean and west coast of Africa has continued to organize today. The National Hurricane Center began advisories on Potential Tropical Cyclone Five at 5 PM ET.
- The center of Five is located about 1,100 miles east-southeast of Barbados, or about 2,650 miles southeast of Miami, FL.
- Five is moving to the west-northwest at 21 mph, and this quick forward speed will continue over the next few days. The system may accelerate over the next 72 hours.
- Maximum sustained winds are near 35 mph and gradual strengthening is forecast. The system could be near hurricane strength in the Caribbean.

Florida Outlook:

- No impacts to Florida are expected through Saturday evening.
- It is too early to determine exact impacts to Florida, but the system will be near the state early next week. Please continue to monitor the forecast as additional details come in.
- *By Day 5 (Monday morning), the system will be starting a turn towards the north. The details on when this turn will occur will determine some of the impacts to Florida, and remains unclear at this time.*
- The largest factor in intensity of the system early next week will depend on the track and interaction with the mountainous terrain of Hispaniola and Cuba.

The next briefing packet will be issued Thursday morning. For the latest information on the tropics, please visit the National Hurricane Center website at www.hurricanes.gov.



TROPICAL UPDATE



Created by:

Michael Spagnolo, Deputy State Meteorologist

Michael.Spagnolo@em.myflorida.com

State Meteorological Support Unit

Florida Division of Emergency Management

Users wishing to subscribe (approval pending) to this distribution list, register at:

https://public.govdelivery.com/accounts/FLDEM/subscriber/new?topic_id=SERT_Met_Tropics.

Other reports available for subscription are available at:

<https://public.govdelivery.com/accounts/FLDEM/subscriber/new?preferences=true>