



TROPICAL UPDATE



9:00 AM EDT

Tuesday, June 29, 2021

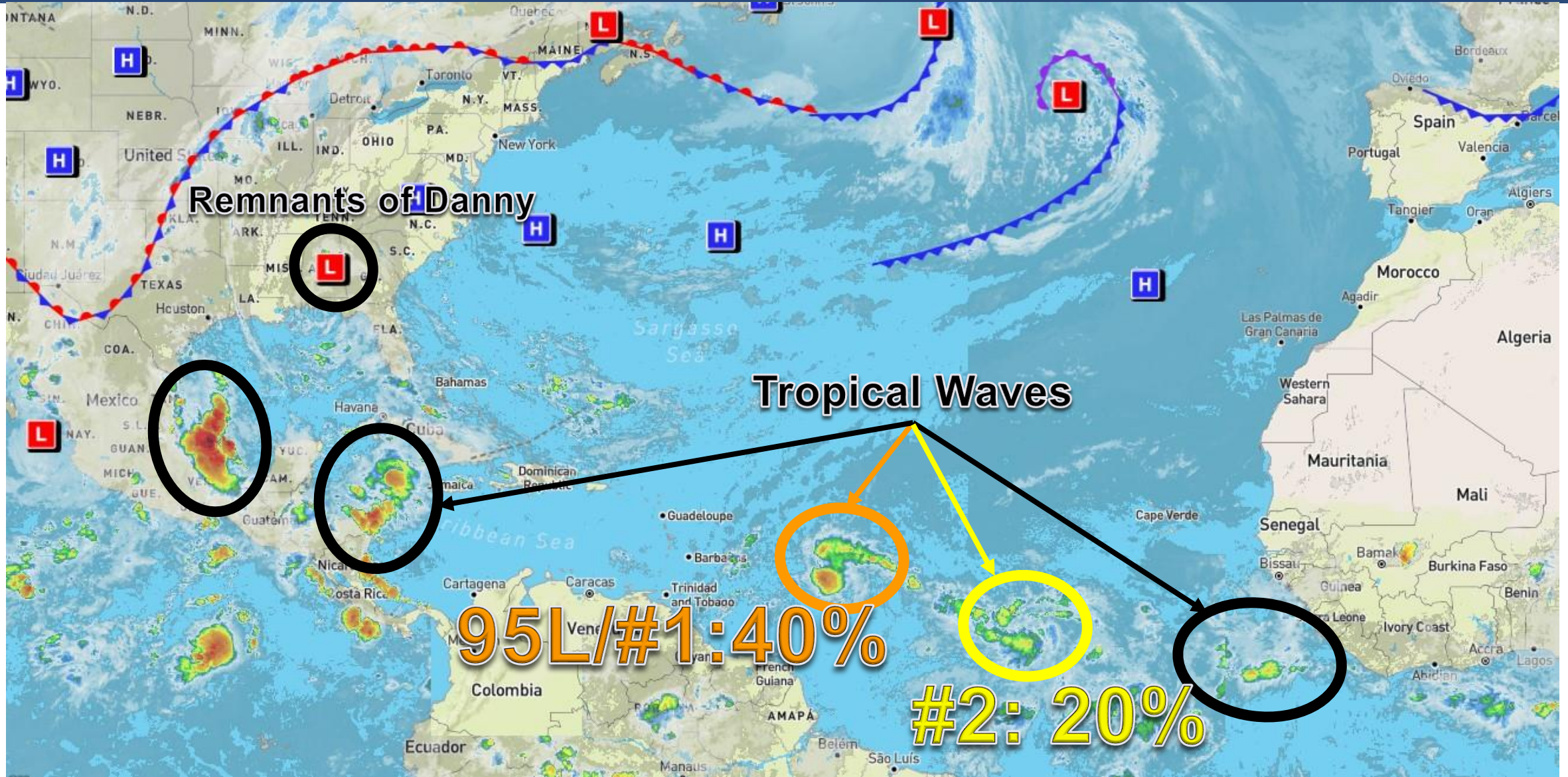
Tropical Wave #1 – Invest 95L (40%) &
Tropical Wave #2 (20%)

This update is intended for government and emergency response officials, and is provided for informational and situational awareness purposes only. Forecast conditions are subject to change based on a variety of environmental factors. For additional information, or for any life safety concerns with an active weather event please contact your County Emergency Management or Public Safety Office, local National Weather Service forecast office, or visit the National Hurricane Center website at www.hurricanes.gov.



Atlantic Basin Satellite Image

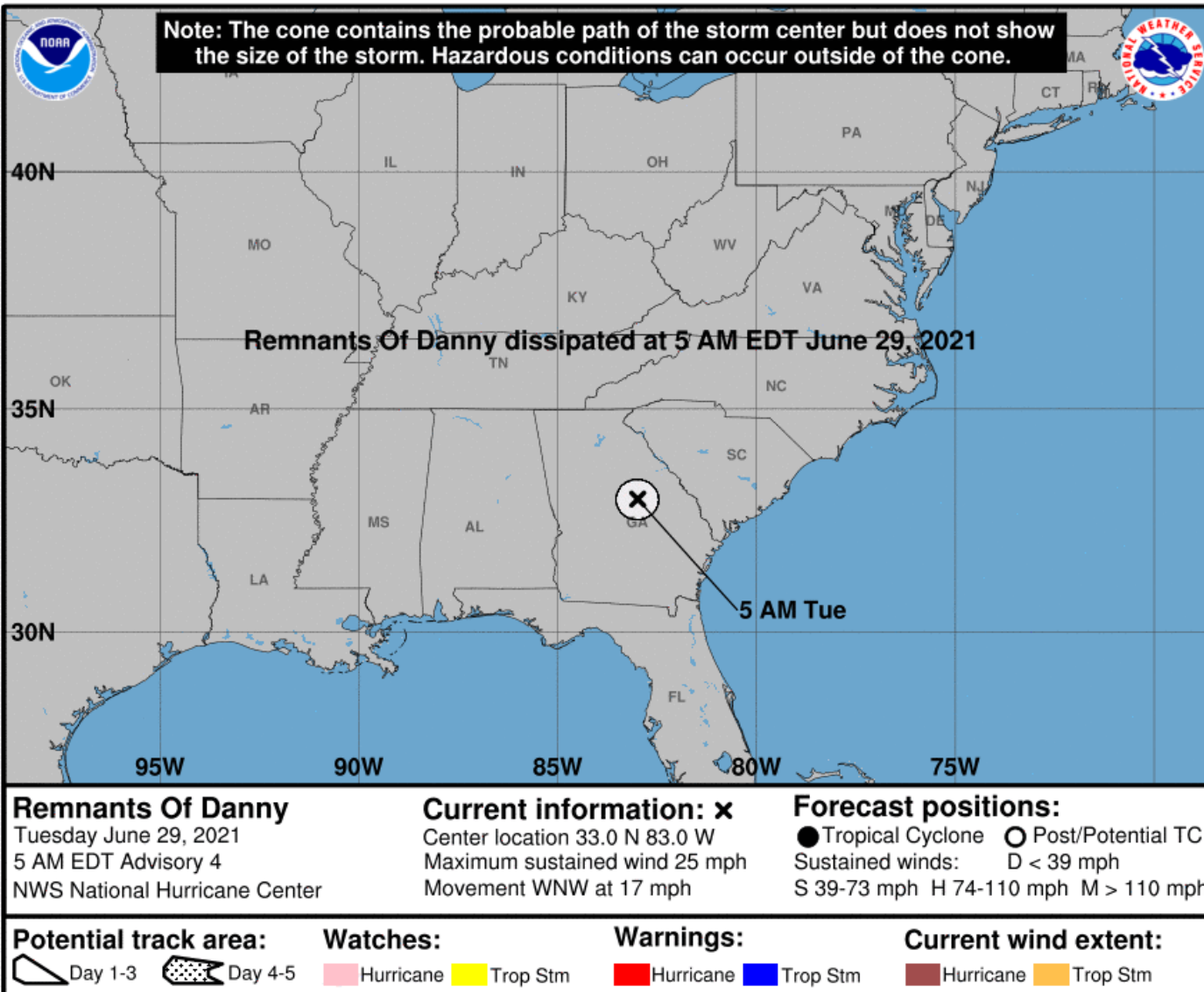
Chance of development: — None — Low — Medium — High





Official Forecast Track – Ex-Danny

From the National Hurricane Center – ([LINK](#))



- The National Hurricane Center issued the last advisory on what was Tropical Storm Danny at 5 AM ET.
- There will be no impacts to Florida from this system.



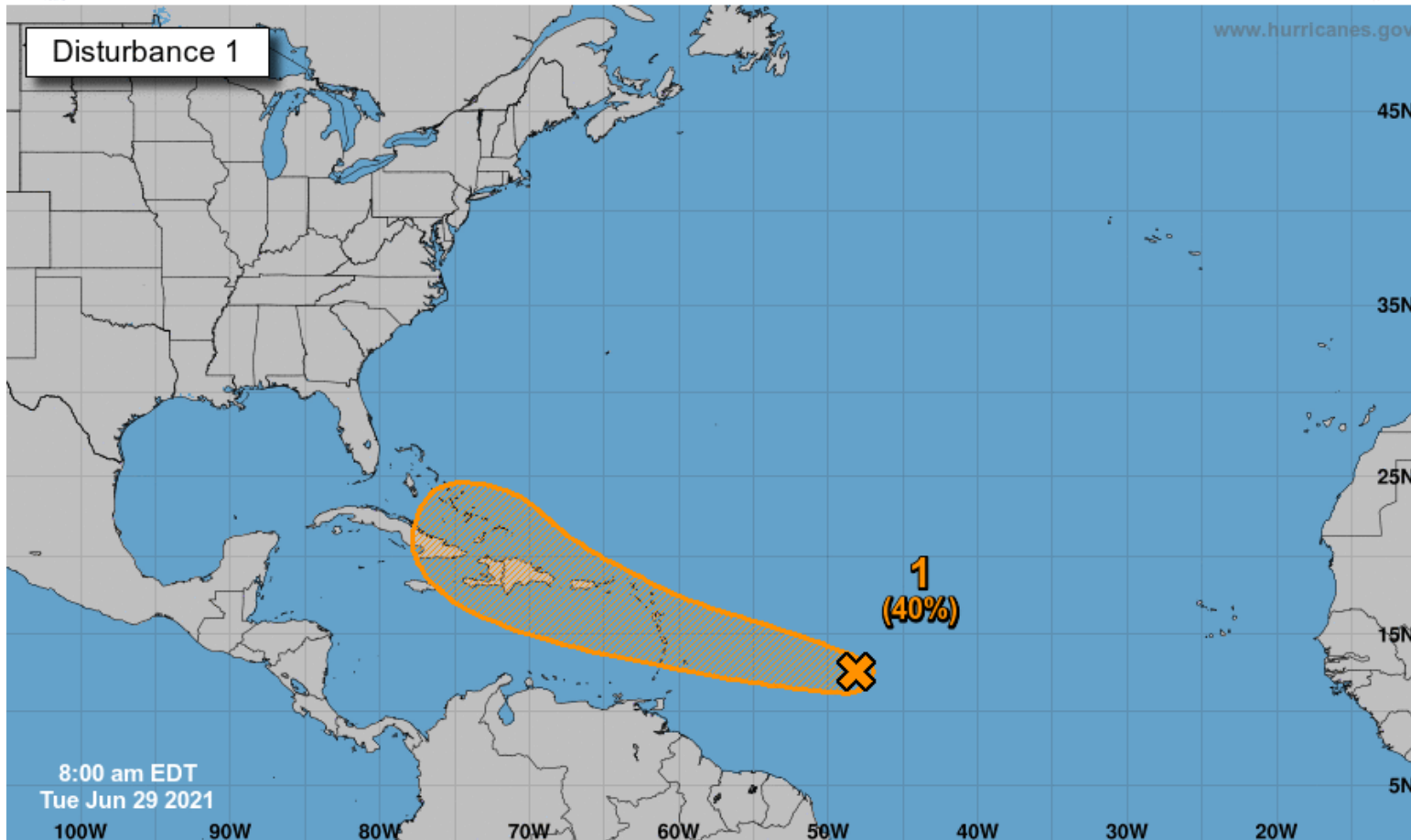
Tropical Weather Outlook

Possible Area of Development During the Next 5 Days ([LINK](#)) – Invest 95L



Five-Day Graphical Tropical Weather Outlook

National Hurricane Center Miami, Florida



Disorganized showers and thunderstorms continue in association with a tropical wave located over the tropical Atlantic, about 850 miles east of the Lesser Antilles. Some slow development of this disturbance is possible later this week and this weekend while the system moves westward to west-northwestward at 15 to 20 mph, likely reaching the Lesser Antilles by Wednesday night.

Thereafter, there is very low confidence in development and track as the system moves over/near the Greater Antilles on Friday/Saturday.

***Formation chance through 48 hours...low...30%**

***Formation chance through 5 days...medium...40%**

Current Disturbances and Five-Day Cyclone Formation Chance: < 40% 40-60% > 60%
Tropical or Sub-Tropical Cyclone: Depression Storm Hurricane
 Post-Tropical Cyclone or Remnants



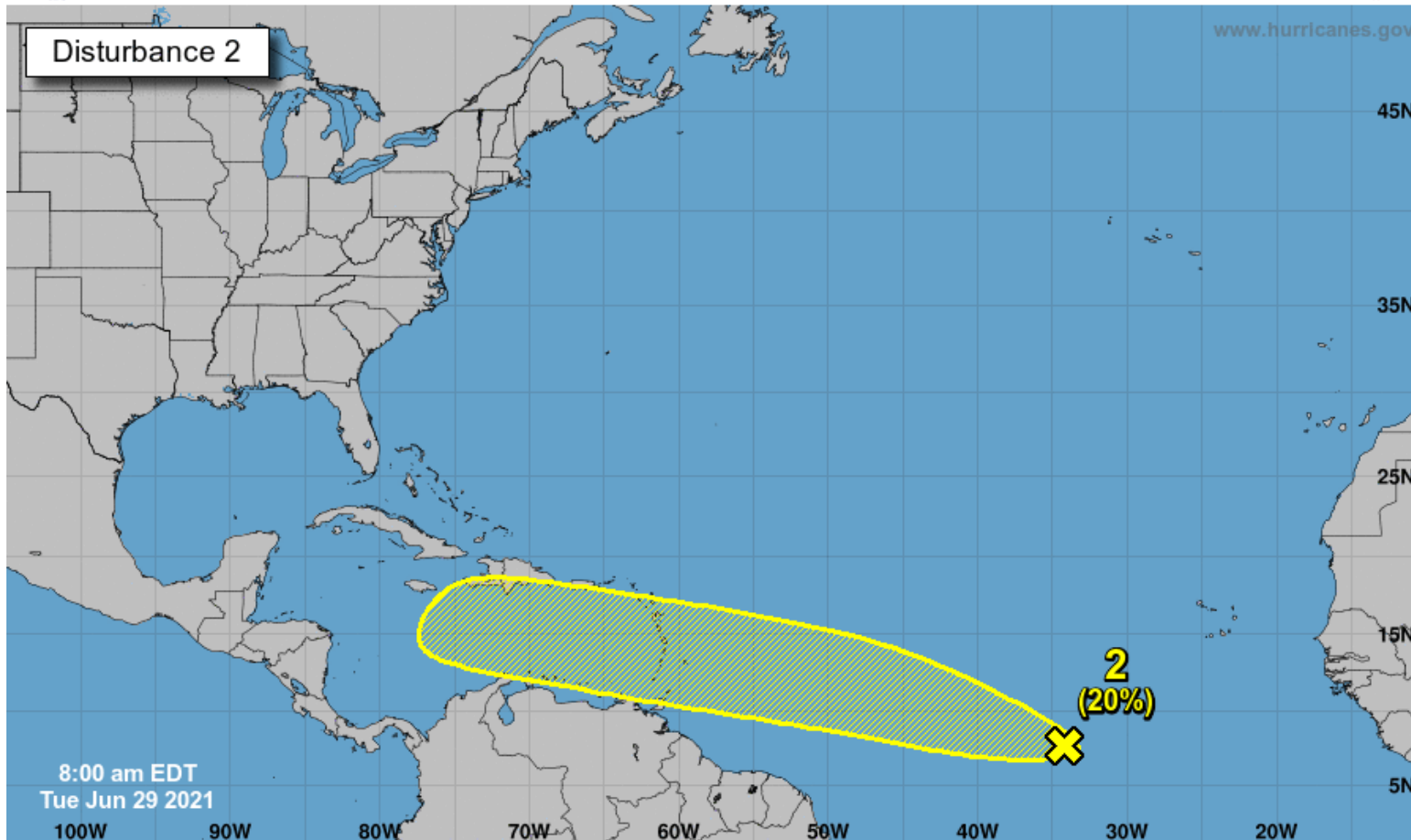
Tropical Weather Outlook

Possible Area of Development During the Next 5 Days ([LINK](#))



Five-Day Graphical Tropical Weather Outlook

National Hurricane Center Miami, Florida



Shower activity associated with a tropical wave located about 800 miles southwest of the Cabo Verde islands has become a little better organized since yesterday. Additional slow development of this system is possible during the next several days as it moves generally west-northwestward at about 20 mph.

This system will move into the eastern Caribbean on Saturday.

***Formation chance through 48 hours...low...10%**

***Formation chance through 5 days...low...20%**

Current Disturbances and Five-Day Cyclone Formation Chance: < 40% 40-60% > 60%

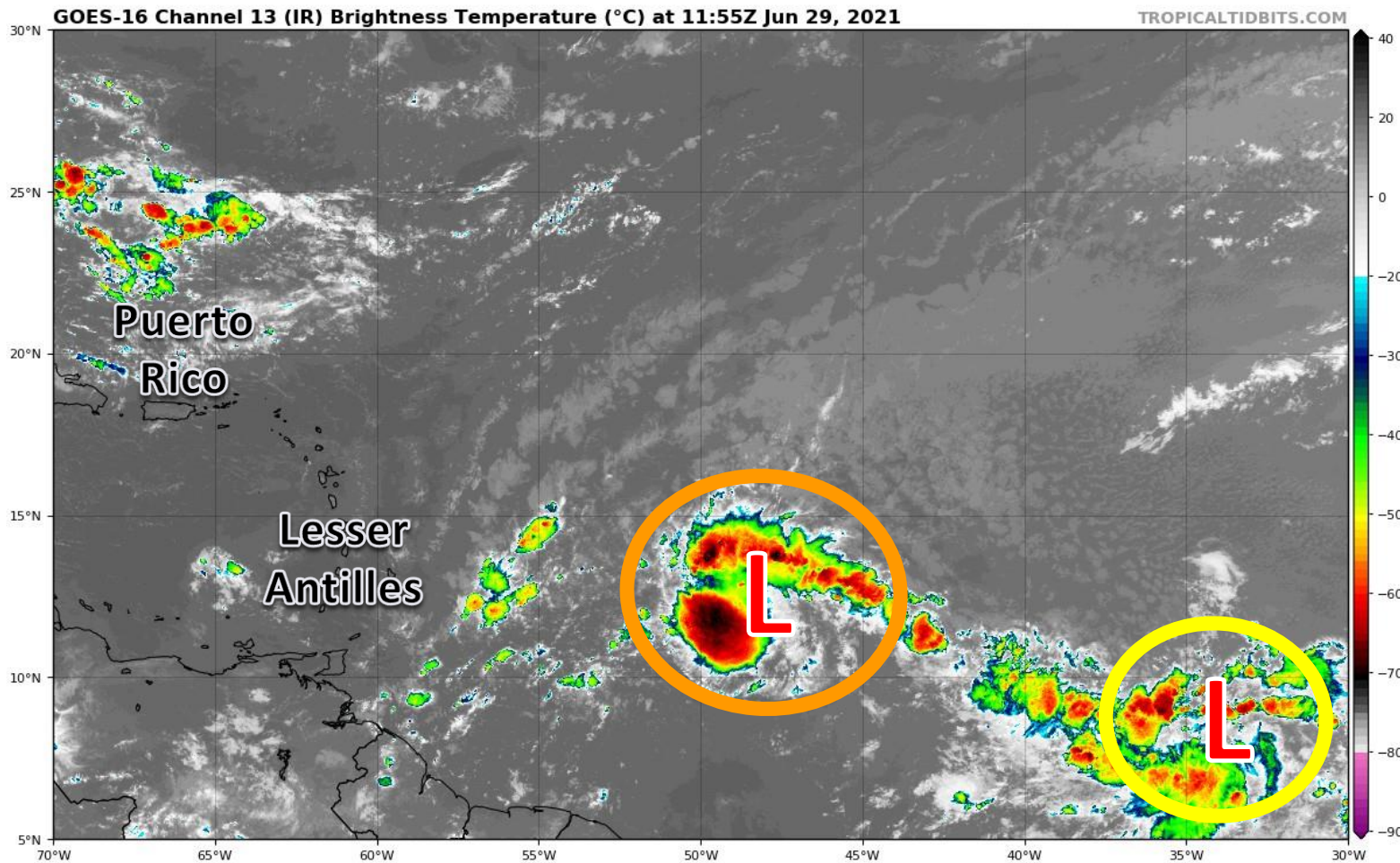
Tropical or Sub-Tropical Cyclone: Depression Storm Hurricane

Post-Tropical Cyclone or Remnants

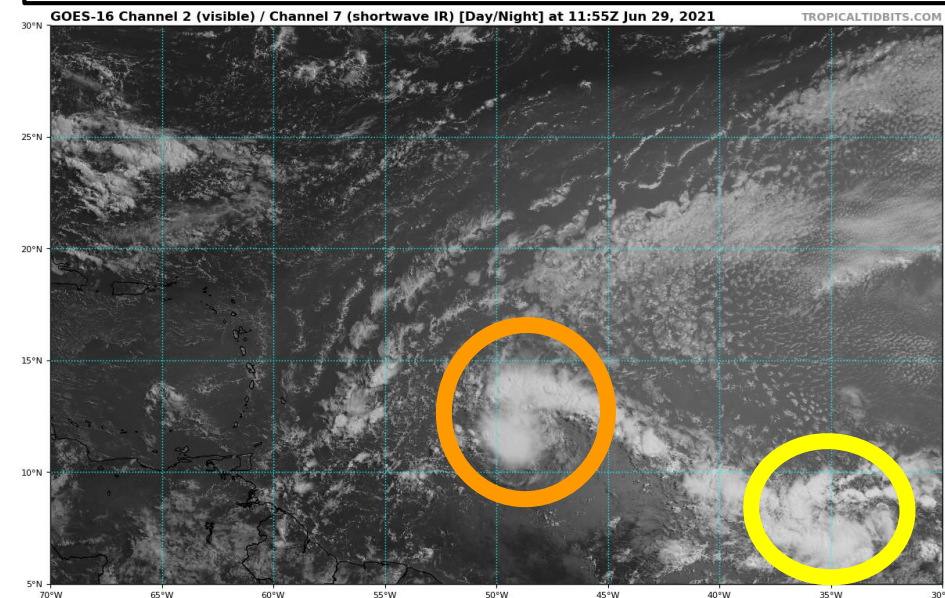


Satellite Imagery

Central Atlantic – Invest 95L & Tropical Wave Number 2



Both tropical waves saw an increase in shower and thunderstorm development overnight. It remains to be seen if this will continue into this afternoon. Both lack a closed circulation and are generally disorganized.



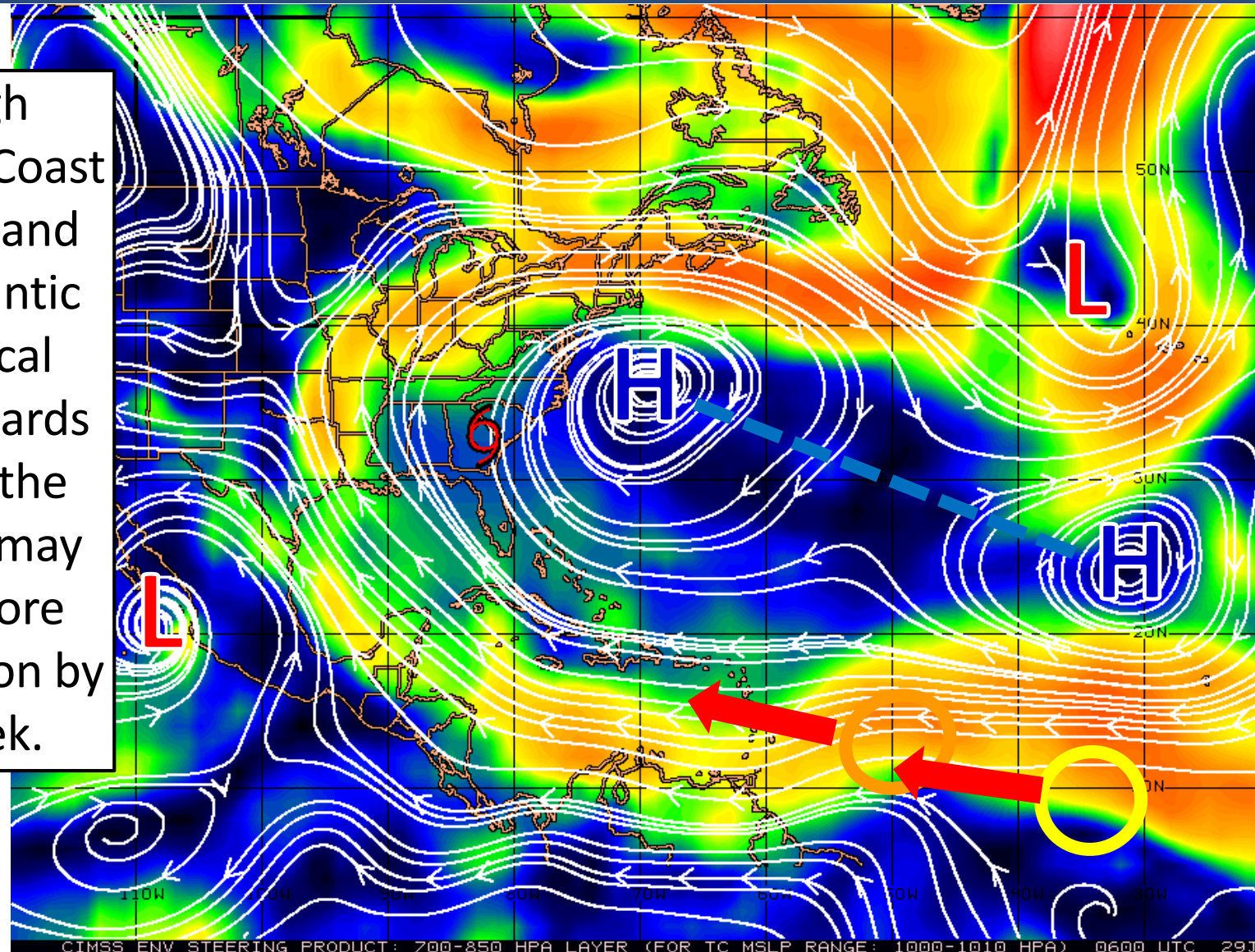


Steering Currents

What is Moving the System?

Color denotes the movement speed through the atmosphere and thin white lines denote direction. Tightly clustered white lines represent faster movement as well.

A large area of high pressure off the East Coast of the United States and over the Central Atlantic will move the tropical waves westward towards the Caribbean over the next few days. They may eventually take a more west-northwest motion by the end of the week.



KTS
100
70
50
30
20
15
10
5
0

Fast Moving Storm

Fast Moving Storm

Typical Moving Storm

Slow Moving Storm

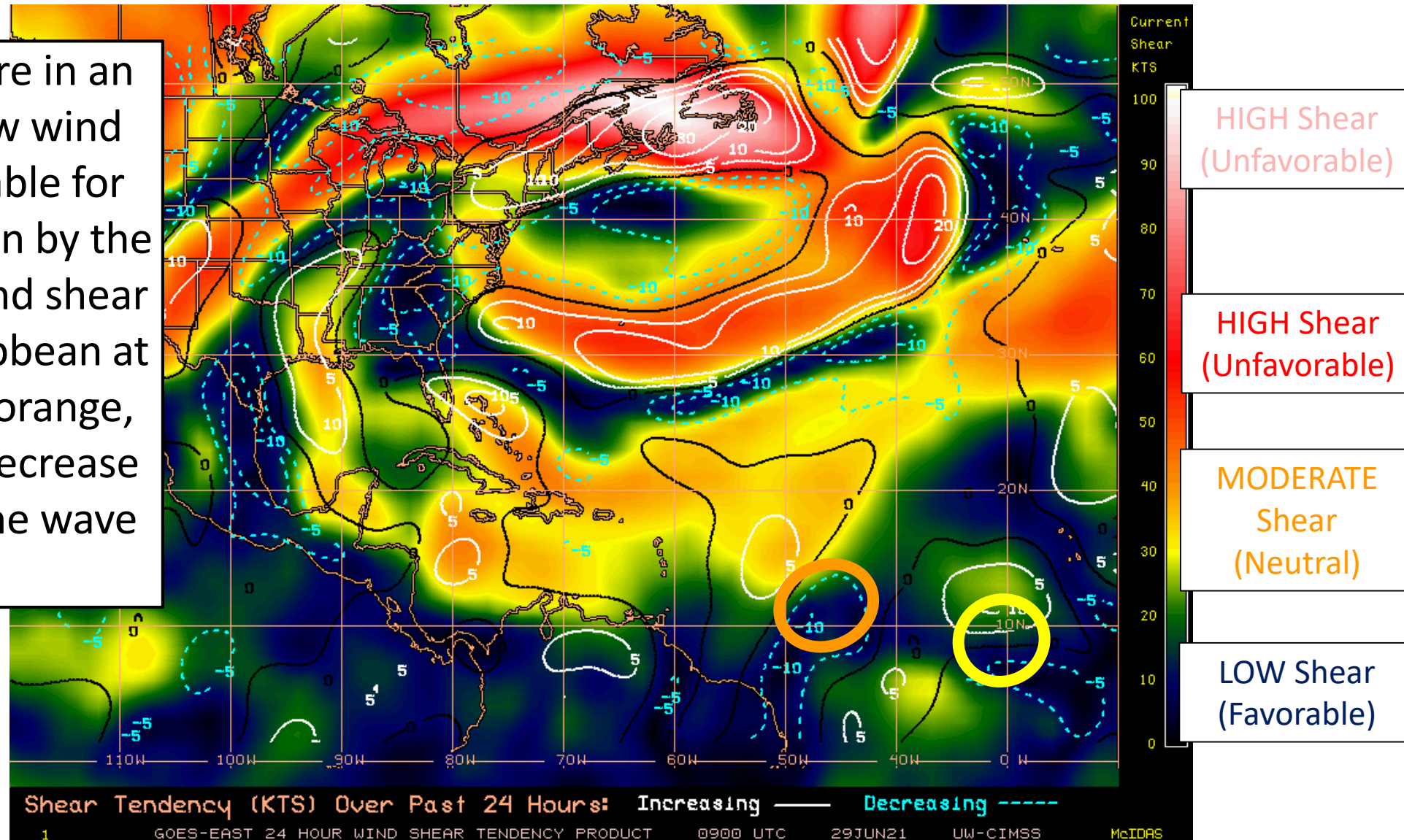


Wind Shear

Is the environment favorable for the system?

Color denotes the amount of wind shear and the lines denote how it have changed over the last 24 hours (dotted lines show decreasing shear and solid lines show increasing).

Both tropical waves are in an environment with low wind shear, which is favorable for development (as shown by the greens and blues). Wind shear is high across the Caribbean at the moment (yellow, orange, and red), but it may decrease later in the week as the wave approach.

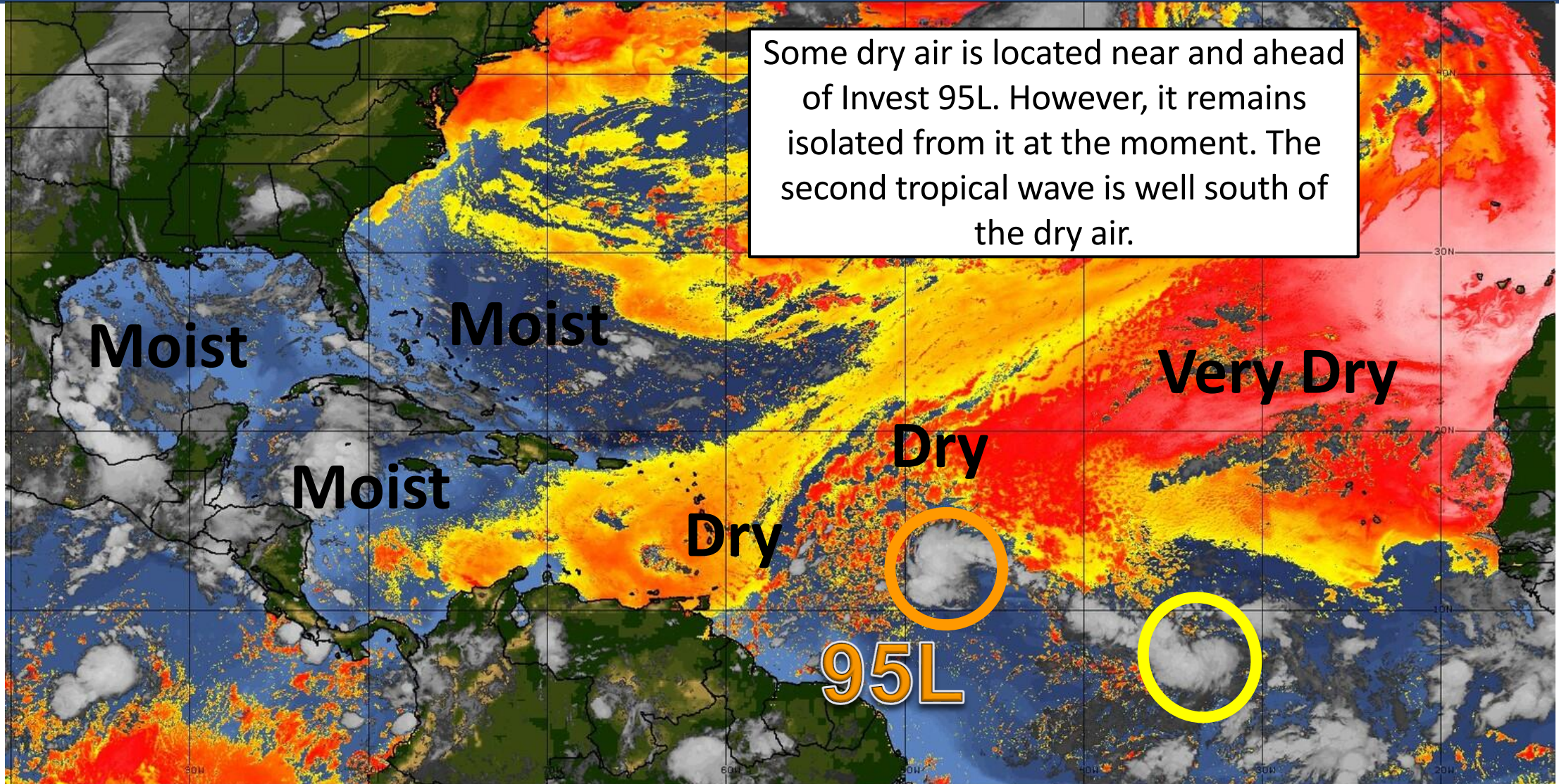




Dry Air & Saharan Dust

Is the environment favorable for the system?

Color denotes concentration of Saharan Dust or dry, stable air.



LESS <---- DRY AIR (LOW/MID-LEVEL) AND/OR DUSTY SAL AIRMASS ----> MORE



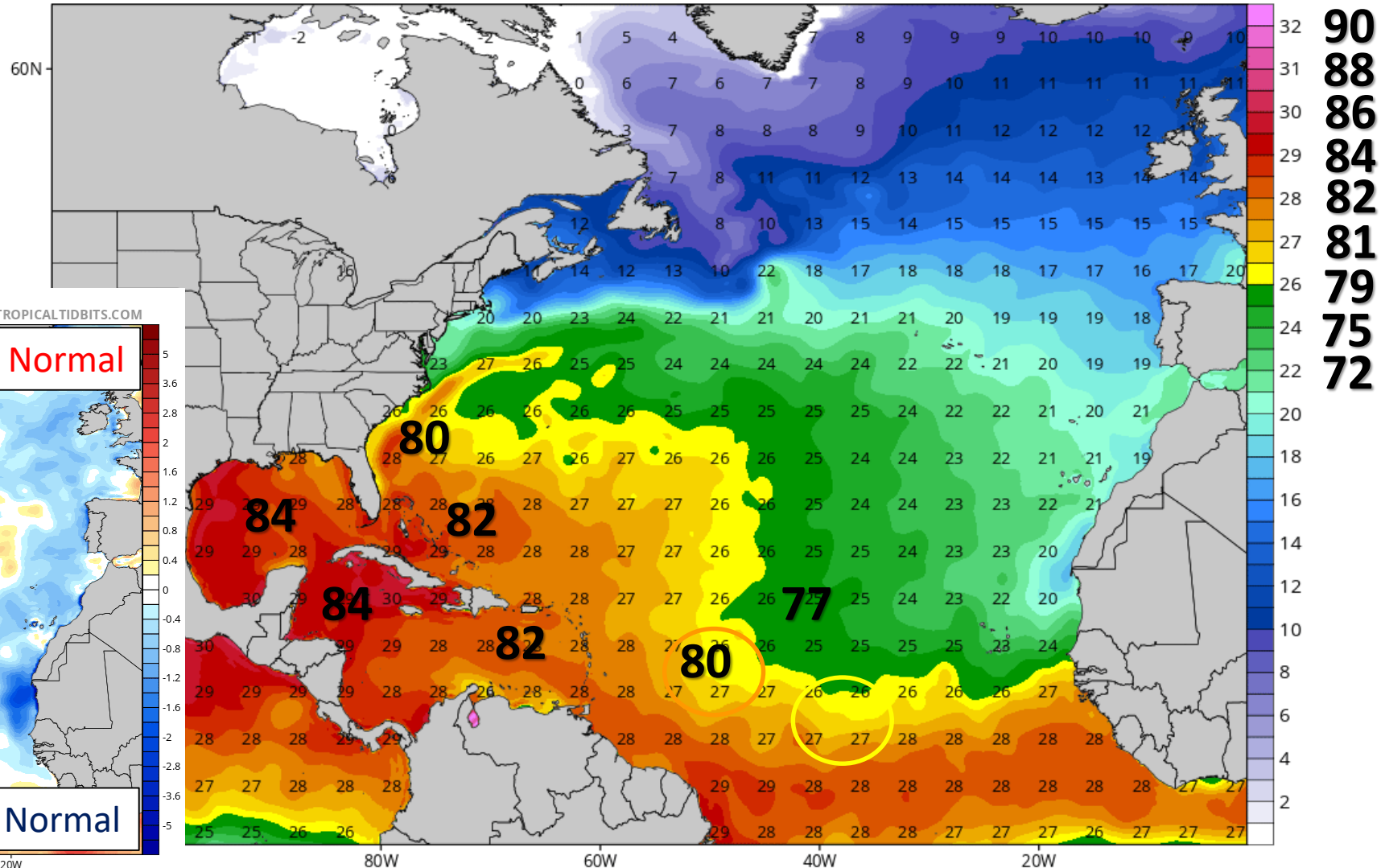
Sea Surface Temperatures & Anomalies

Is the ocean favorable for the system?

Water temperatures were cool near Invest 95L, but both systems are now moving into warmer water. Water temperatures are plenty warm in the Caribbean.

CDAS Sea Surface Temperature (°C)

Analysis Time: 00z Jun 29 2021



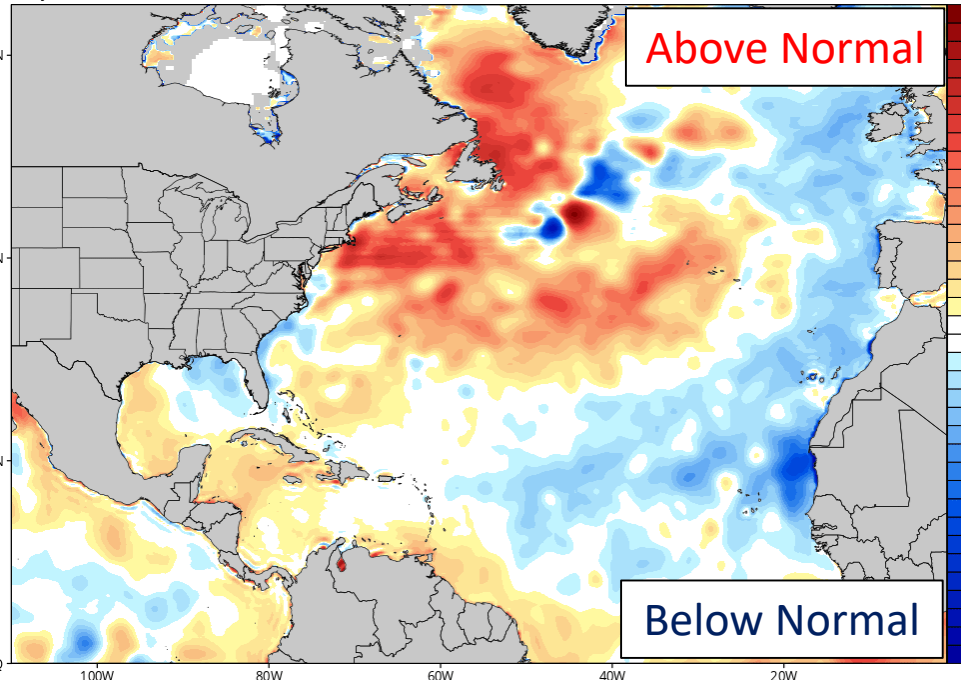
CDAS Sea Surface Temperature Anomaly (°C) (based on CFSR 1981-2010 Climatology)

Analysis Time: 00z Jun 29 2021

TROPICALTIDBITS.COM

Above Normal

Below Normal



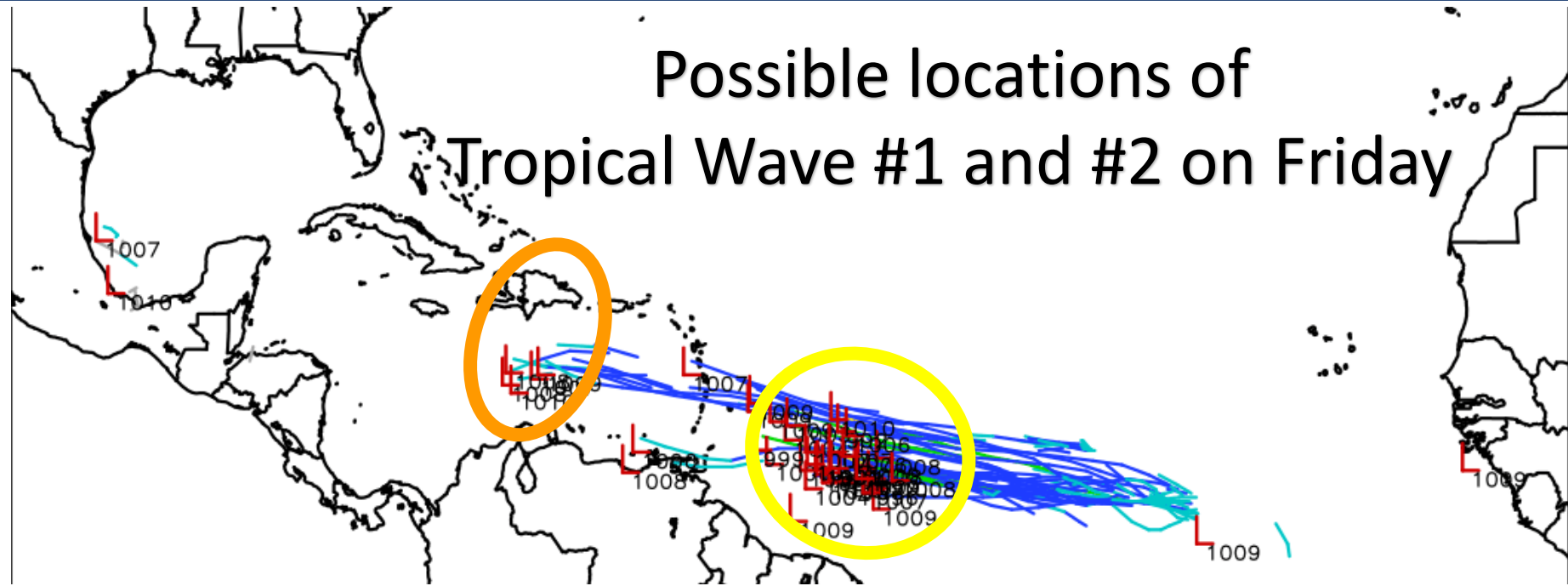


Model Forecast Tracks

Ensemble Models

There is **SIGNIFICANT** uncertainty by this weekend. The first tropical wave (orange circle) may dissipate entirely and interact with the mountainous terrain of the Greater Antilles, or it could develop in a slightly more favorable environment in the southeastern Bahamas or northern Caribbean Sea.

The second tropical wave (yellow circle) will just be entering the Caribbean this weekend and has plenty of time to monitor.



Please continue to monitor the forecast! Odds at this time favor slow development/a weak system and model forecasts are very different from day to day. It is still early in the season for development in this area, but conditions look to be favorable by the weekend in the Caribbean.



Overall Summary

Remnants of Tropical Storm Danny

- The National Hurricane Center issued the last advisory on Danny at 5 AM ET and it has dissipated inland over northern Alabama.

Tropical Wave #1 – Invest 95L

- Disorganized showers and thunderstorms continue in association with a tropical wave located over the tropical Atlantic, about 850 miles east of the Lesser Antilles.
- Some slow development of this system is possible over the next couple of days as it nears the eastern Caribbean.
- Invest 95L will move into the eastern Caribbean Wednesday night and Thursday. The forecast after this point becomes quite uncertain.
- The National Hurricane Center gives this system a 30% (low) chance of formation during the next 48 hours and a 40% (medium) chance of formation during the next 5 days.

Tropical Wave #2

- Shower activity associated with a tropical wave located about 800 miles southwest of the Cabo Verde islands has become a little better organized since yesterday.
- Additional slow development of this system is possible during the next several days as it moves generally west-northwestward.
- This system will move into the eastern Caribbean on Saturday and continue west or west-northwest from there.
- The National Hurricane Center gives this system a 10% (low) chance of formation during the next 48 hours and a 20% (low) chance of formation during the next 5 days.

Florida Outlook:

- Neither tropical wave poses a threat to Florida over the next 5 days, but they should be monitored heading into the upcoming holiday weekend.

The next briefing packet will be issued Wednesday morning, or sooner if conditions warrant. For the latest information on the tropics, please visit the National Hurricane Center website at www.hurricanes.gov.



TROPICAL UPDATE



Created by:

Michael Spagnolo, Deputy State Meteorologist

Michael.Spagnolo@em.myflorida.com

State Meteorological Support Unit

Florida Division of Emergency Management

Users wishing to subscribe (approval pending) to this distribution list, register at:

https://public.govdelivery.com/accounts/FLDEM/subscriber/new?topic_id=SERT_Met_Tropics.

Other reports available for subscription are available at:

<https://public.govdelivery.com/accounts/FLDEM/subscriber/new?preferences=true>