



# TROPICAL UPDATE



5:00 PM EDT

Saturday, June 19, 2021

Tropical Depression Claudette

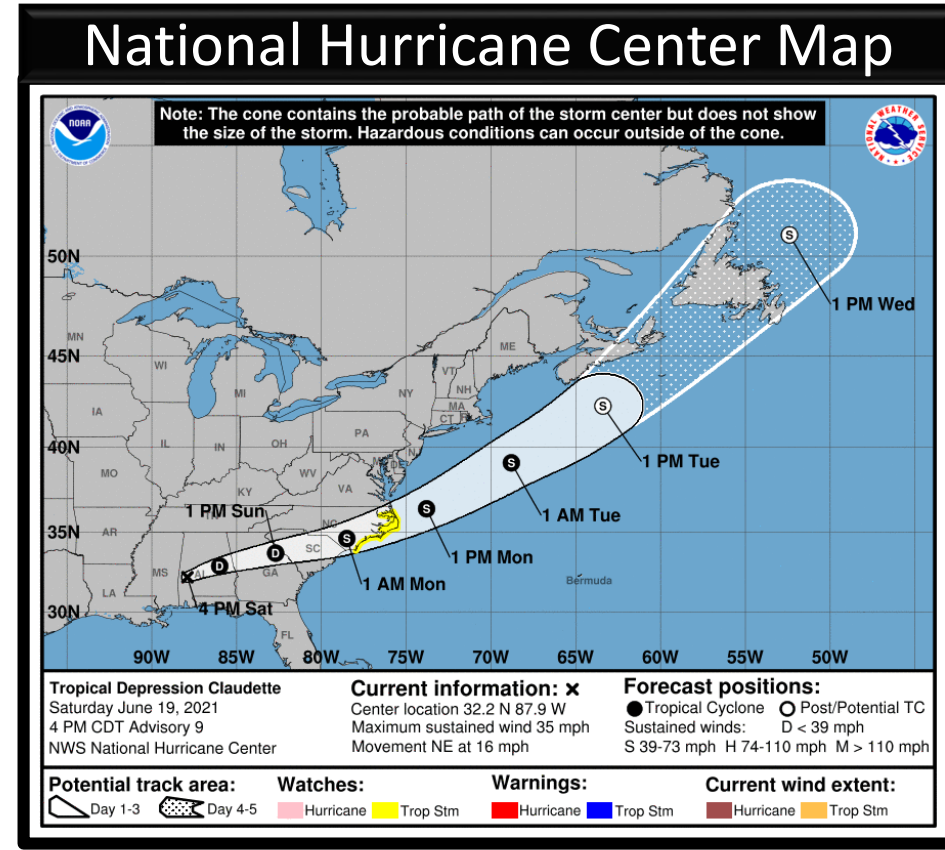
This update is intended for government and emergency response officials, and is provided for informational and situational awareness purposes only. Forecast conditions are subject to change based on a variety of environmental factors. For additional information, or for any life safety concerns with an active weather event please contact your County Emergency Management or Public Safety Office, local National Weather Service forecast office, or visit the National Hurricane Center website at [www.hurricanes.gov](http://www.hurricanes.gov).



# Tropical Depression Claudette

5 PM ET Saturday: Florida Threats & Changes Since Last Packet

	MINIMAL	Low	MODERATE	HIGH	EXTREME
WINDS					
STORM SURGE					
FLASH FLOODING					
TORNADOES					
	Low	MODERATE		HIGH	
RIP CURRENTS					



## Overview/Recent Changes:

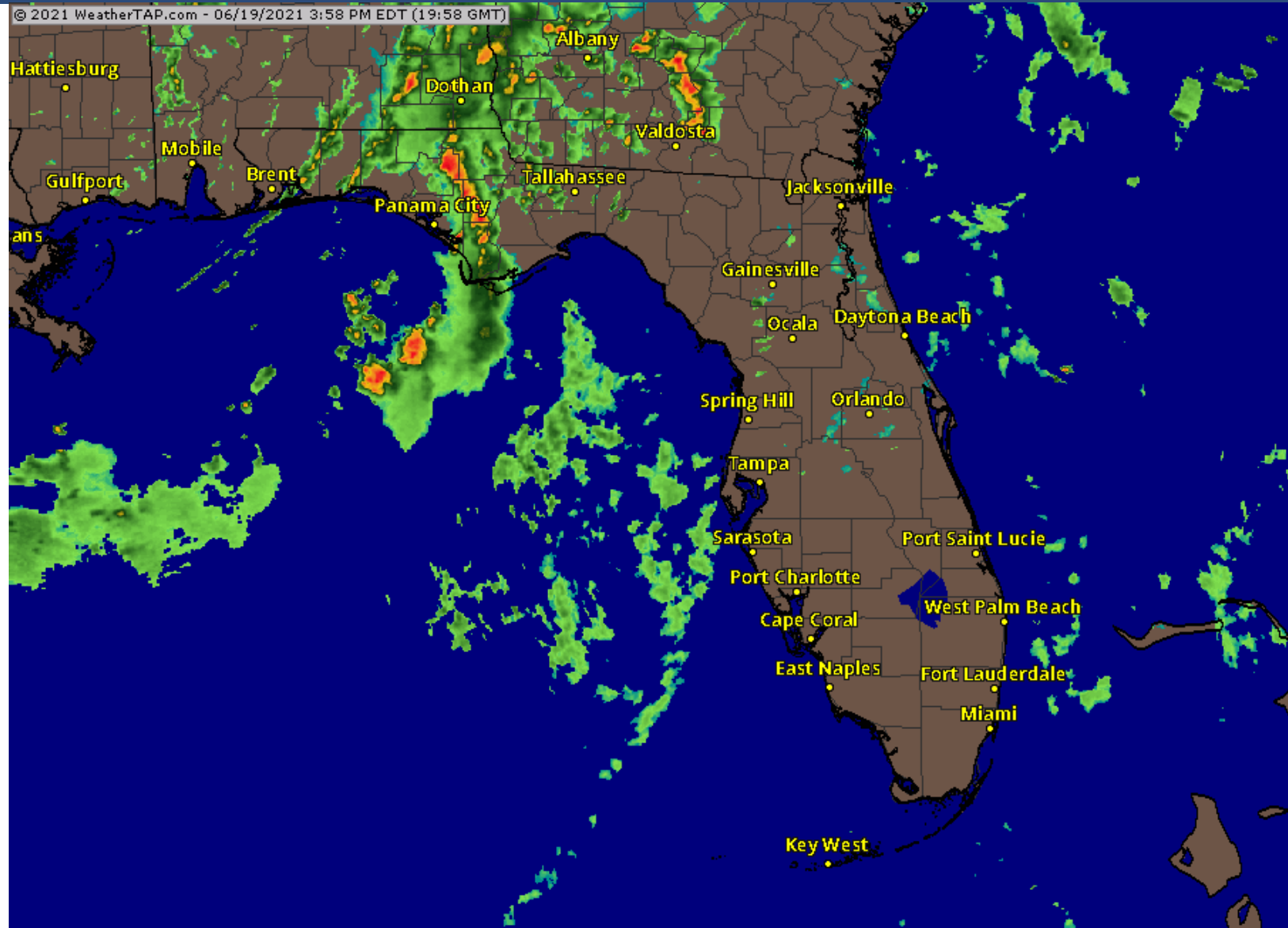
Claudette has weakened to a tropical depression, and all Tropical Storm Warnings have been canceled. There still remains a possibility of some gusty winds, isolated tornadoes, and torrential downpours in the strongest storms through tonight. Scattered storms will be possible in North Florida tomorrow, which could also pose a heavy rain and localized flood threat.



# Current Florida Radar

As of 4:00 PM ET

Rain and thunderstorms are more scattered across the Panhandle and Big Bend. There is still a localized flash flood and isolated tornado threat with some of the stronger storms.





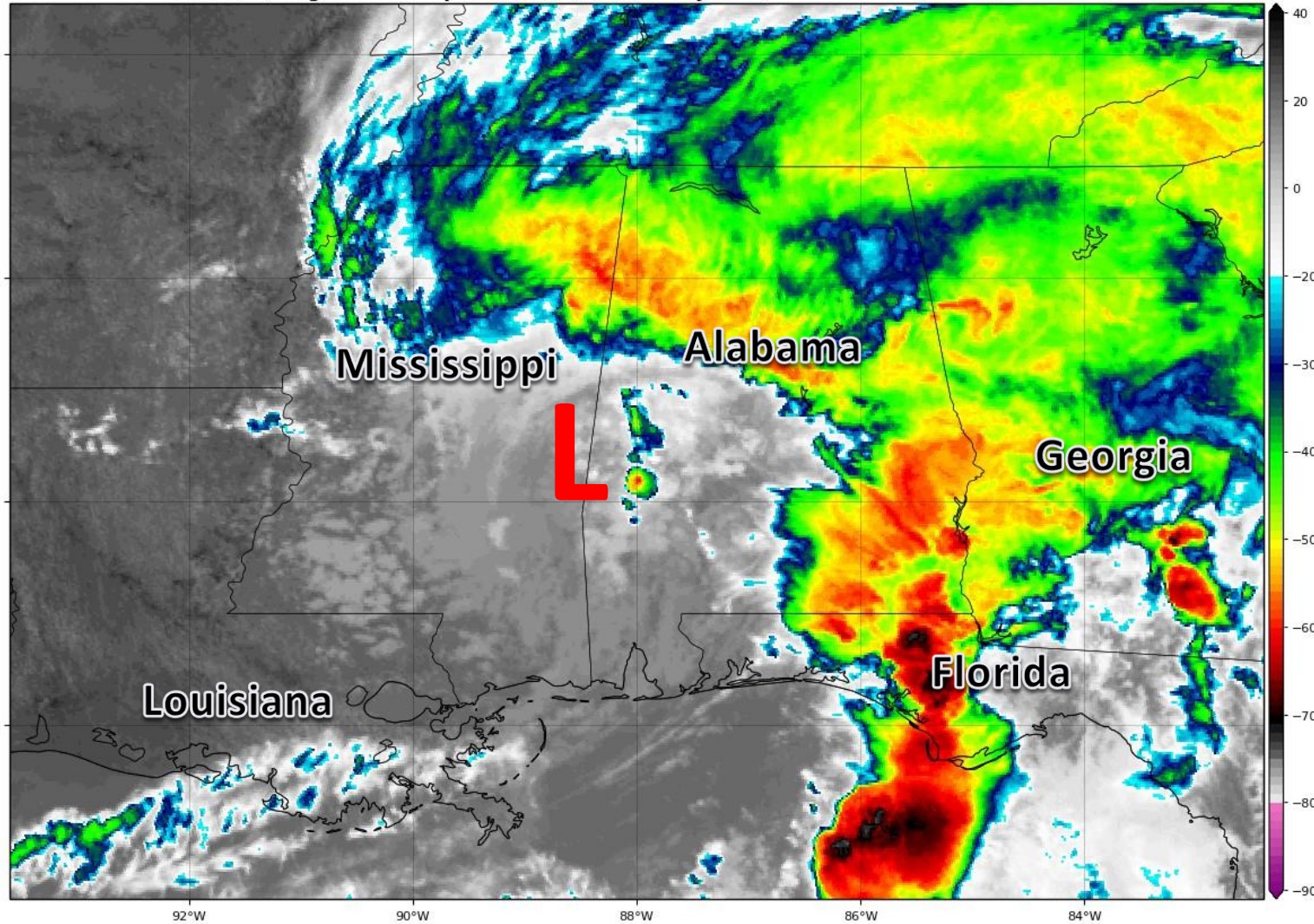


# Satellite Imagery

## Tropical Depression Claudette

GOES-16 Channel 13 (IR) Brightness Temperature (°C) at 19:57Z Jun 19, 2021

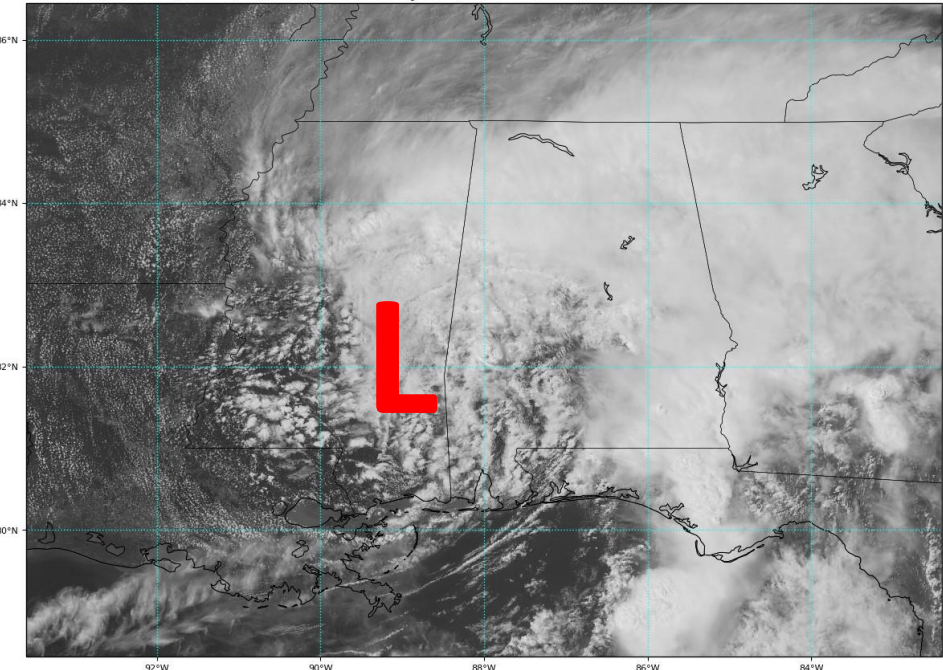
TROPICALTIDBITS.COM



Claudette continues to move across the Southeast US, with most of the storms well to the north and east of the center. Claudette will continue to weaken.

GOES-16 Channel 2 (visible) Reflectance at 20:02Z Jun 19, 2021

TROPICALTIDBITS.COM

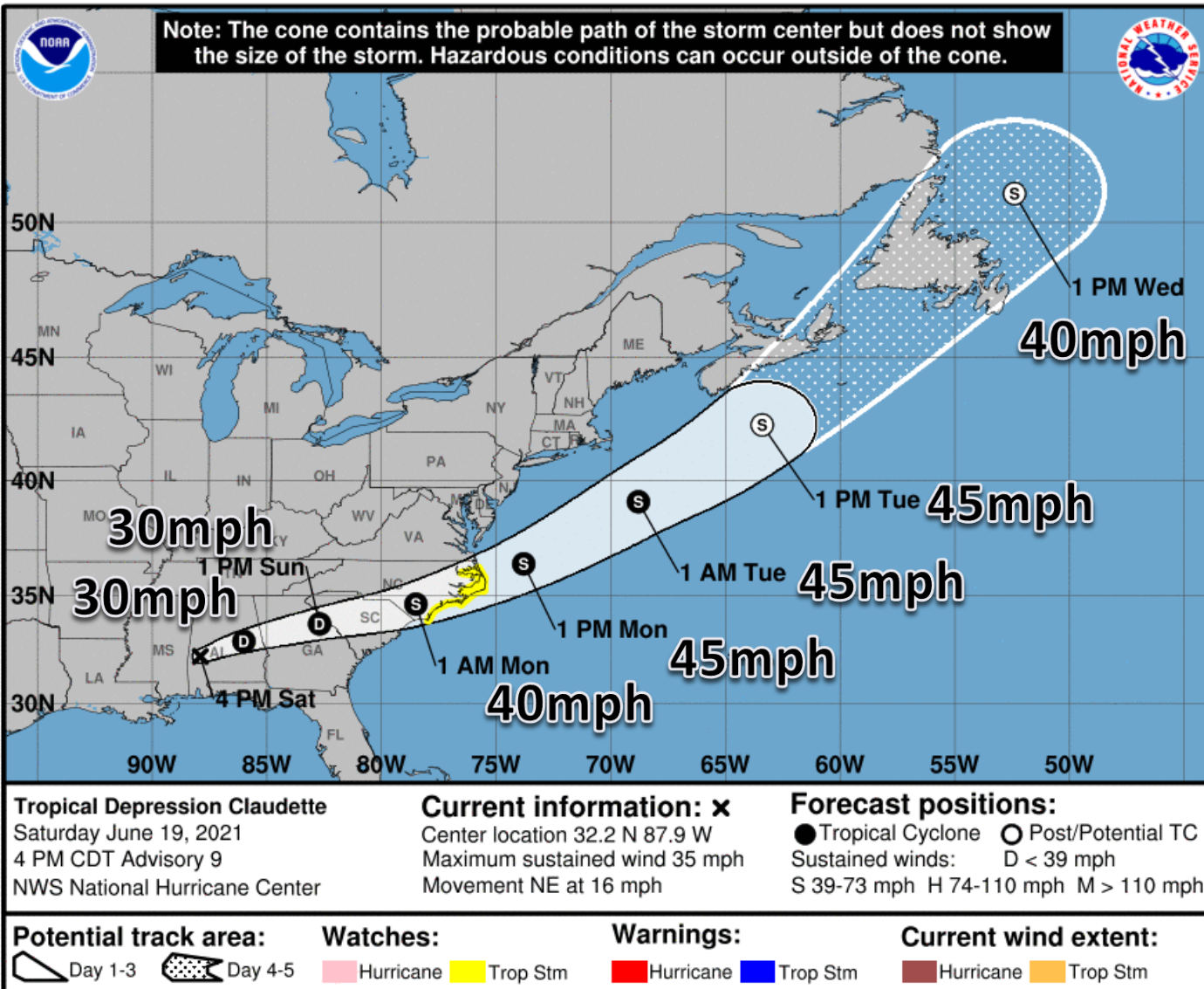






# Official Forecast Track – TD Claudette

From the National Hurricane Center – ([LINK](#))



- Claudette is located about 95 miles west of Montgomery, AL, moving northeast at 16 mph.
- Maximum sustained winds have decreased to 35 mph, and all Tropical Storm Warnings have been discontinued.
- Claudette could become a tropical storm again Monday night over the Carolinas and strengthen further as it moves offshore.
- Locally heavy rainfall and isolated tornadoes remain possible in the stronger storms across the Panhandle.



# Key Messages

From the National Hurricane Center



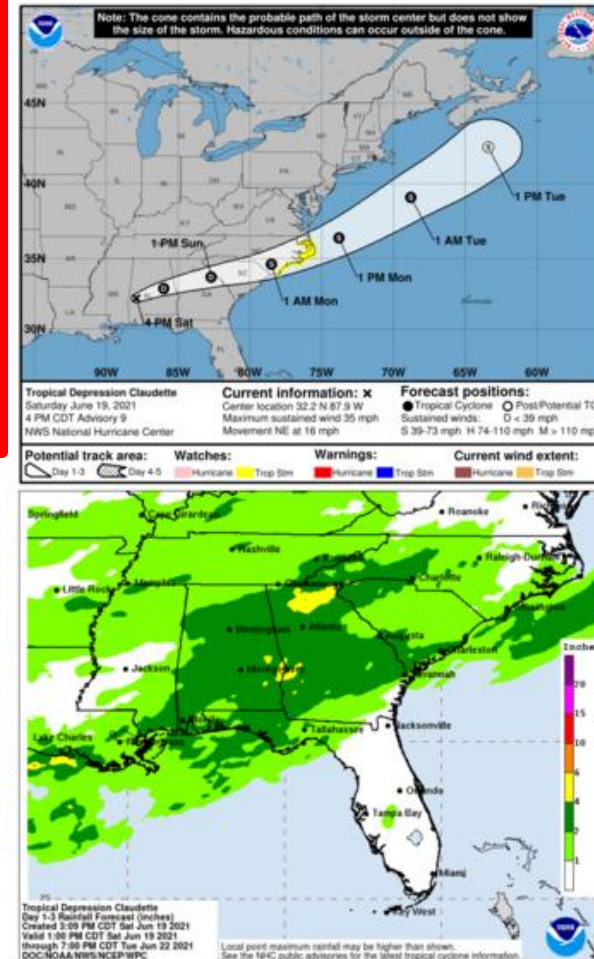
## Key Messages for Tropical Depression Claudette

Advisory 9: 4:00 PM CDT Sat Jun 19, 2021



1. Claudette is expected to produce heavy rainfall and flash flooding across portions of the Florida Panhandle, eastern Alabama, and Georgia through tonight, and into the Carolinas on Sunday. Considerable flash, urban, and small stream flooding impacts are expected across these areas.

2. Tropical storm conditions are possible along portions of the North Carolina coast Sunday night and Monday, where a Tropical Storm Watch is in effect.

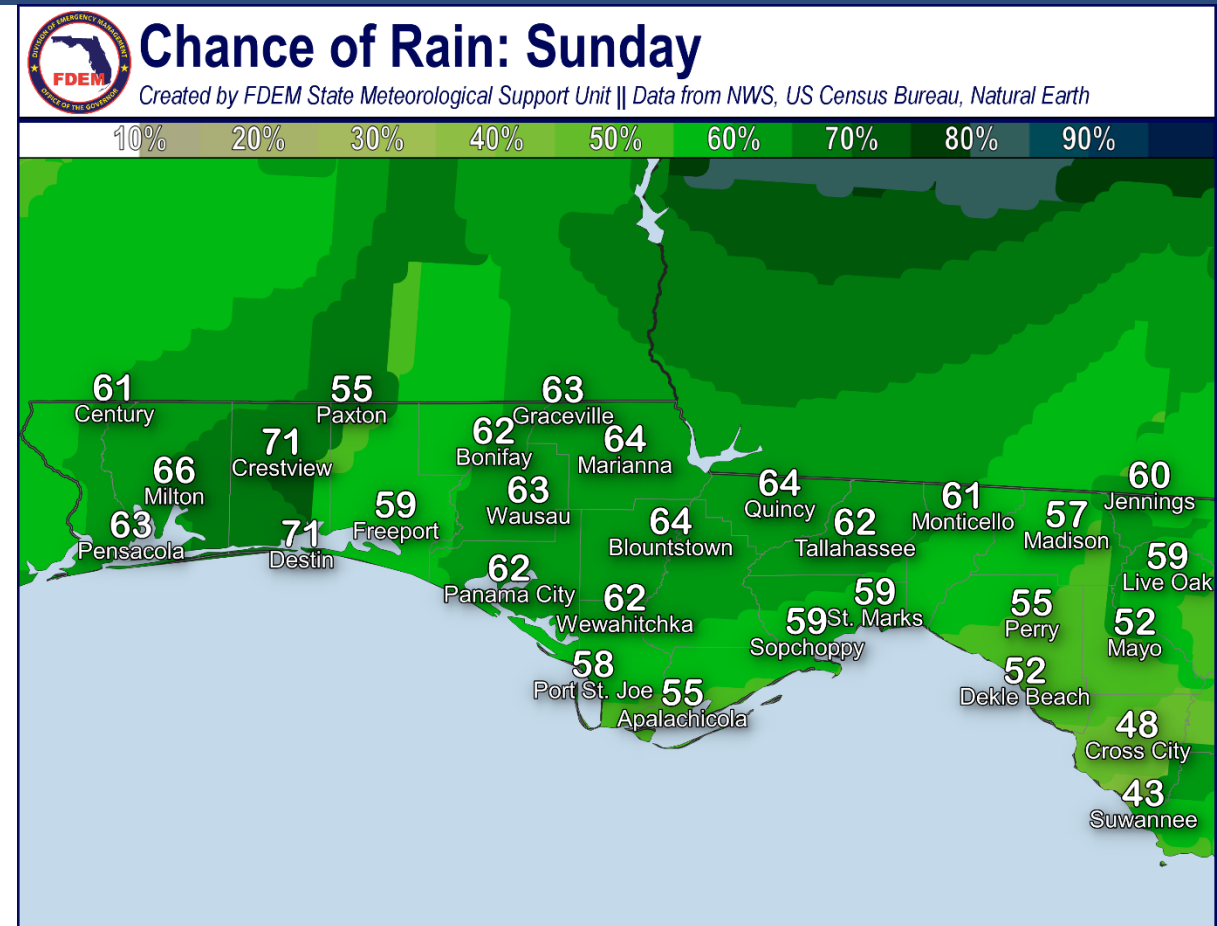
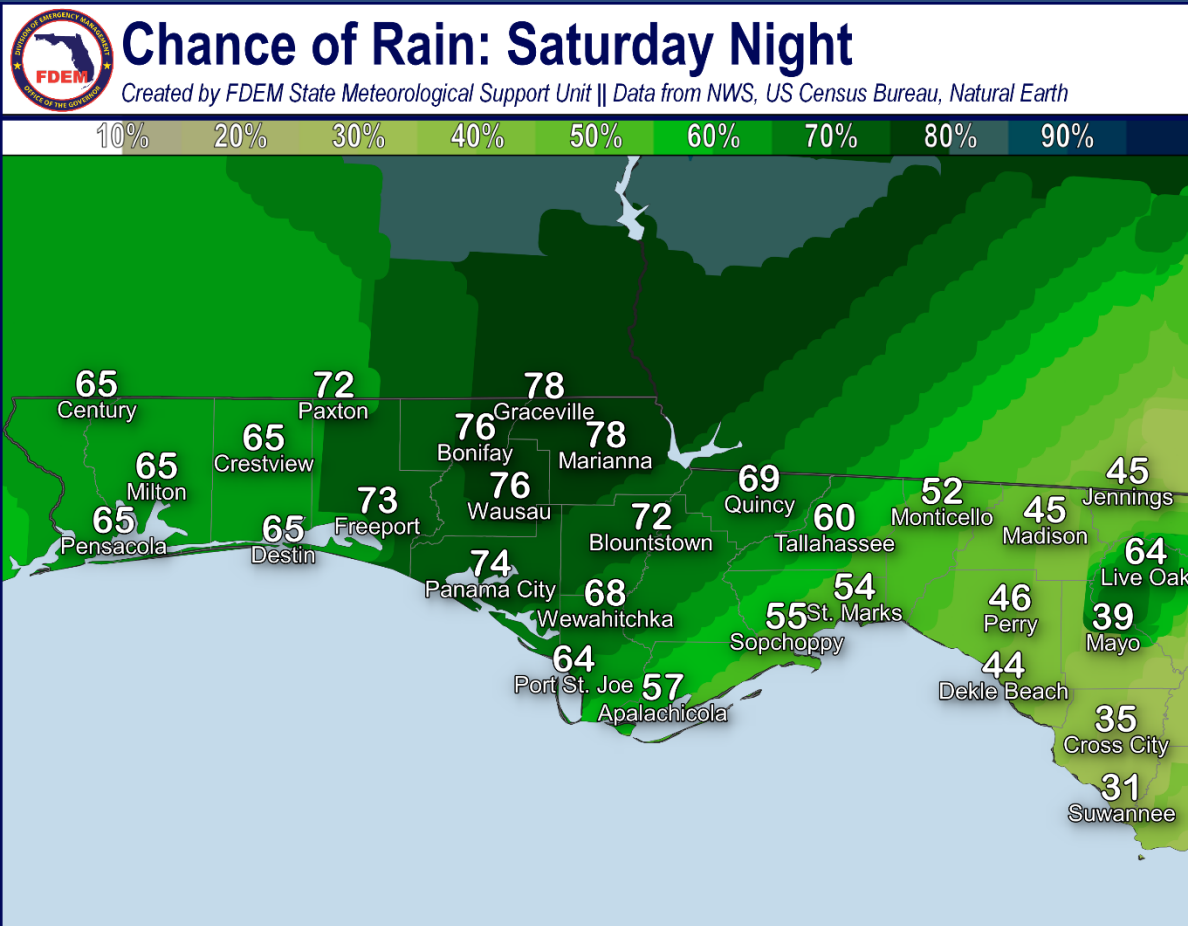


For more information go to [hurricanes.gov](https://hurricanes.gov)



# Forecast Rain Chances

Today through Sunday – Tropical Depression Claudette



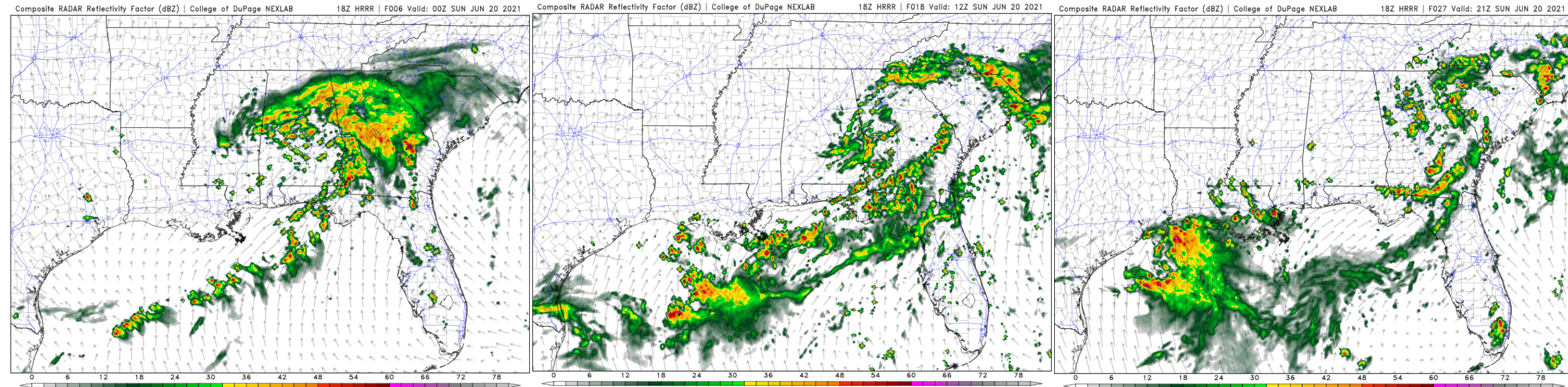
Rain chances have decreased since bands are more broken up and showers and storms have become scattered.





# Model Forecast Radar

**\*\*\*Only Model Guidance – Time & Position Will Vary\*\*\***



This Evening

Sunday Morning

Sunday Afternoon

Rain and storms will become more scattered through the evening, but gusty winds, isolated tornadoes, and heavy downpours will remain possible in the stronger showers.





# Severe Weather Outlook Saturday

From the Storm Prediction Center

## 5 - High

Widespread severe storms expected

## 4 - Moderate

Widespread severe storms likely

## 3 - Enhanced

Numerous severe storms possible

## 2 - Slight

Scattered severe storms possible

## 1 - Marginal

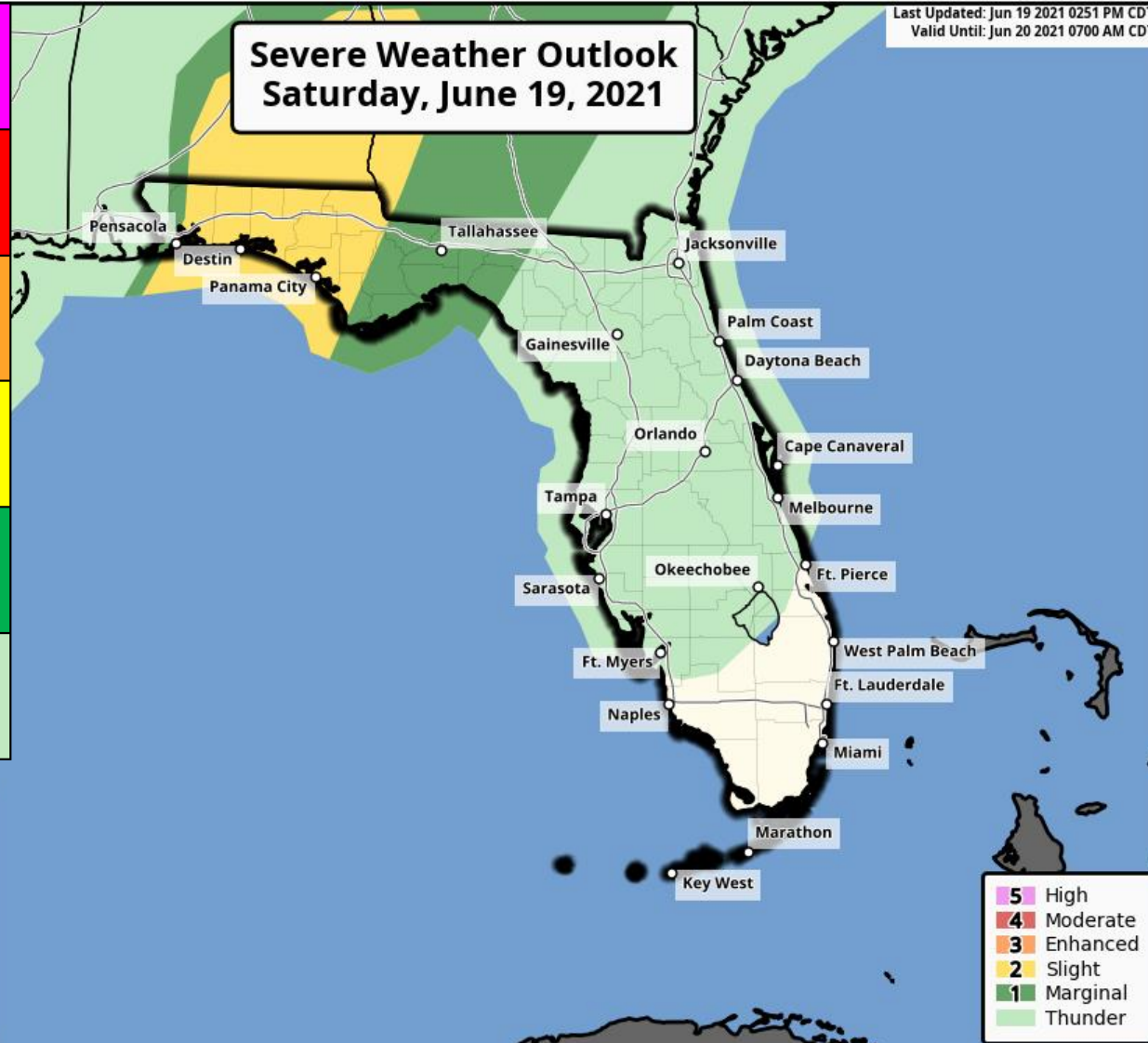
Isolated severe storms possible

## Thunderstorms

No severe storms expected

## Severe Weather Outlook Saturday, June 19, 2021

Last Updated: Jun 19 2021 0251 PM CDT  
Valid Until: Jun 20 2021 0700 AM CDT



There remains a Marginal to Slight Risk of severe weather through this evening (level 1-2 of 5) for the possibility of isolated tornadoes



National Weather Service  
Storm Prediction Center

<http://www.spc.noaa.gov>



# Tornado Watch

In Effect Until 8 PM ET/7 PM CT



A Tornado Watch remains in effect for the eastern Panhandle through this evening.



**Tornado Watch # 285 - Valid from 935 AM until 700 PM CDT**





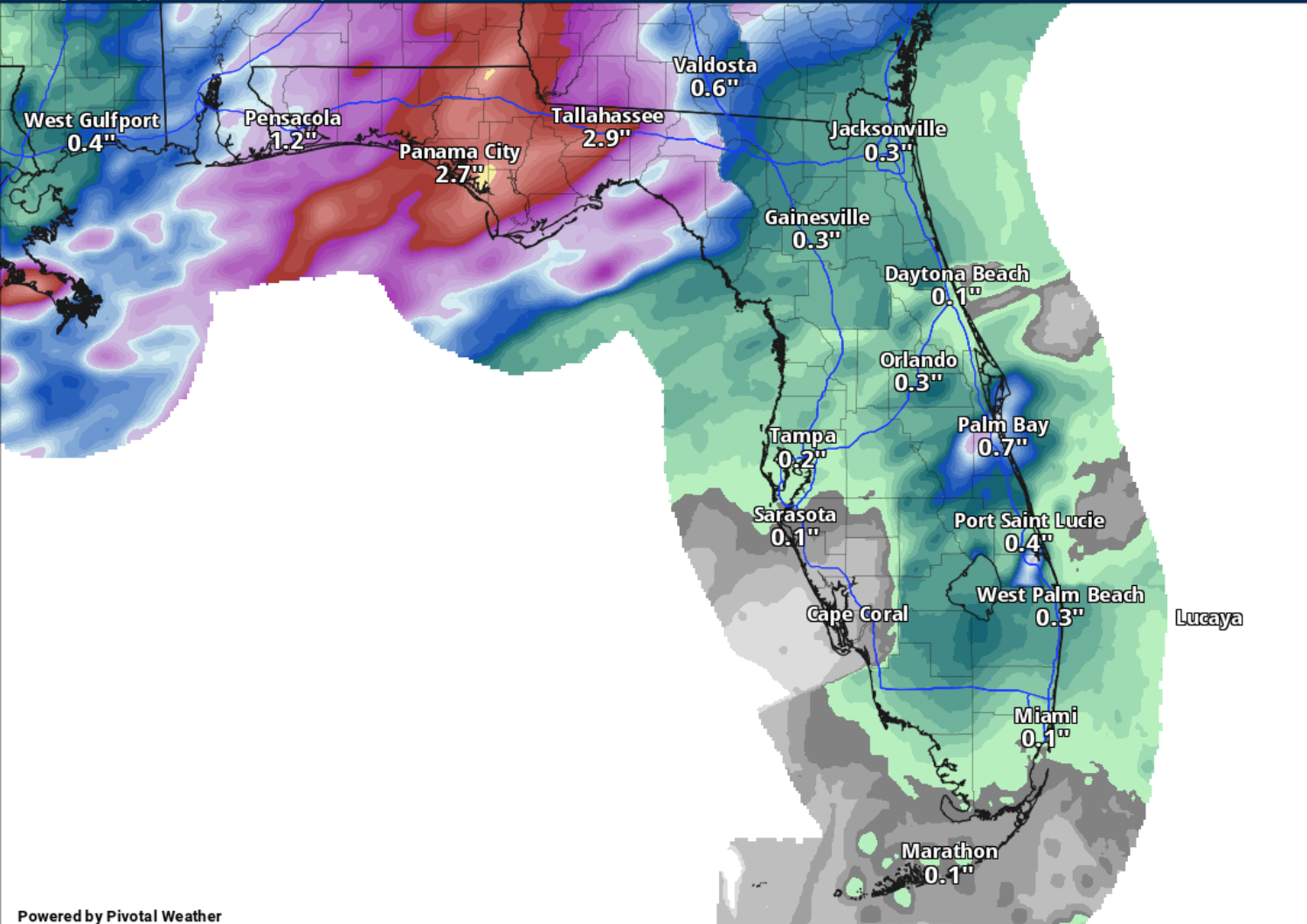
# Rainfall Totals Next 2 Days

Ending 2 PM ET Monday

48-hr QPF Accumulation (in)

Ending Monday, Jun. 21, 2021 at 2 p.m. EDT

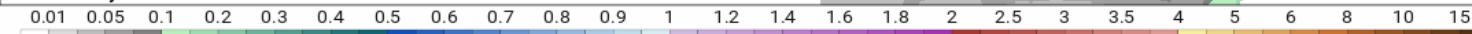
NWS NDFD - 06/19/2021 18z



An additional 2-4" of rain is possible over the next 2 days with some localized spots up to 6" possible.

**These rainfall totals are highly dependent on where the rain bands set up!**

Powered by Pivotal Weather





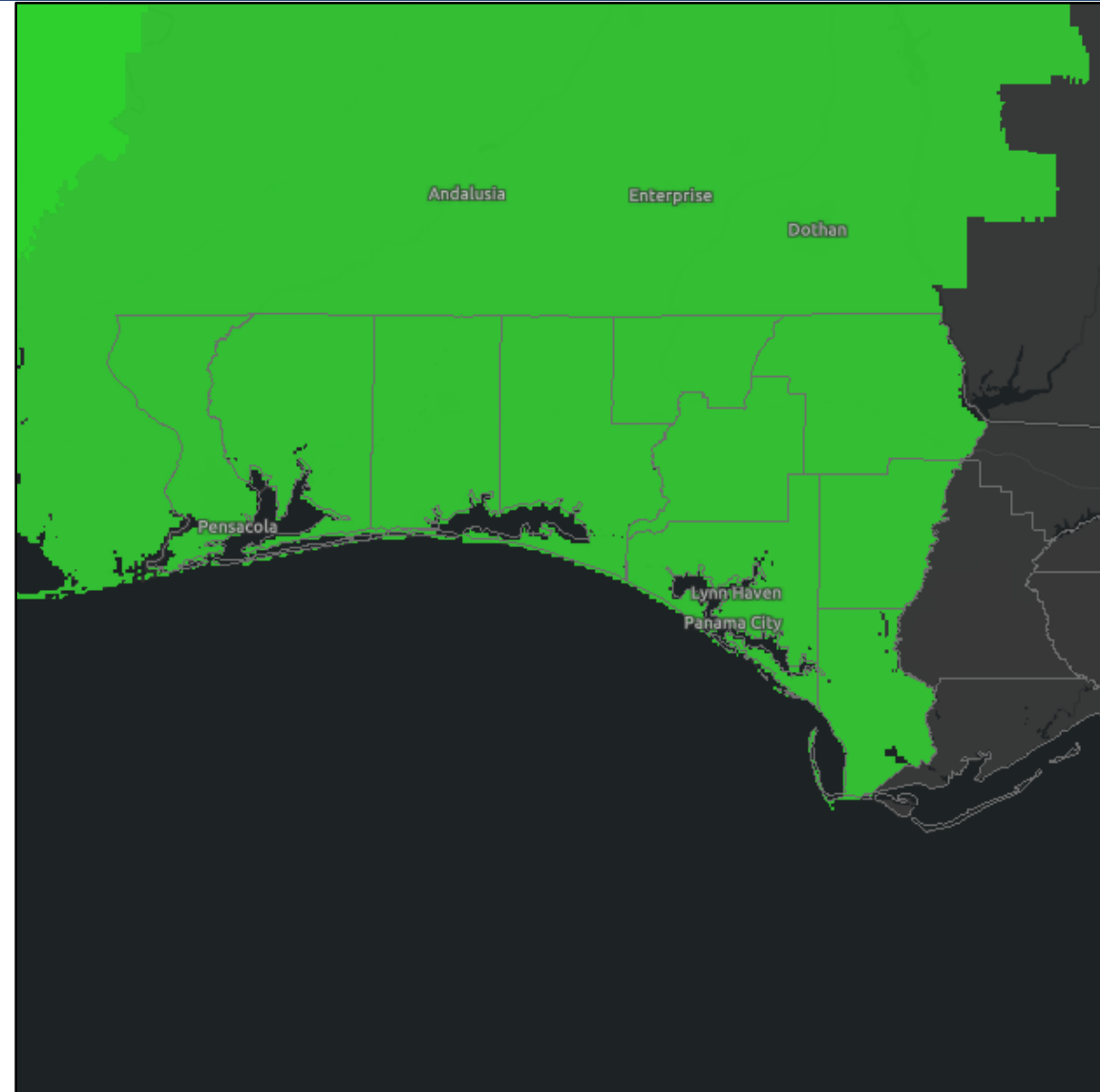
# Flash Flood Watches

Links: [NWS Mobile](#) | [NWS Tallahassee](#)

The Flash Flood Watch for Escambia, Santa Rosa and Okaloosa Counties ends 6 AM CT on Sunday.

The Flash Flood Watch for Walton, Holmes, Washington, Bay, Jackson, Calhoun, and Gulf until 7 PM CT on Sunday.

Widespread rainfall totals of 5-8 inches are expected with localized totals of 10-14 inches or more possible.

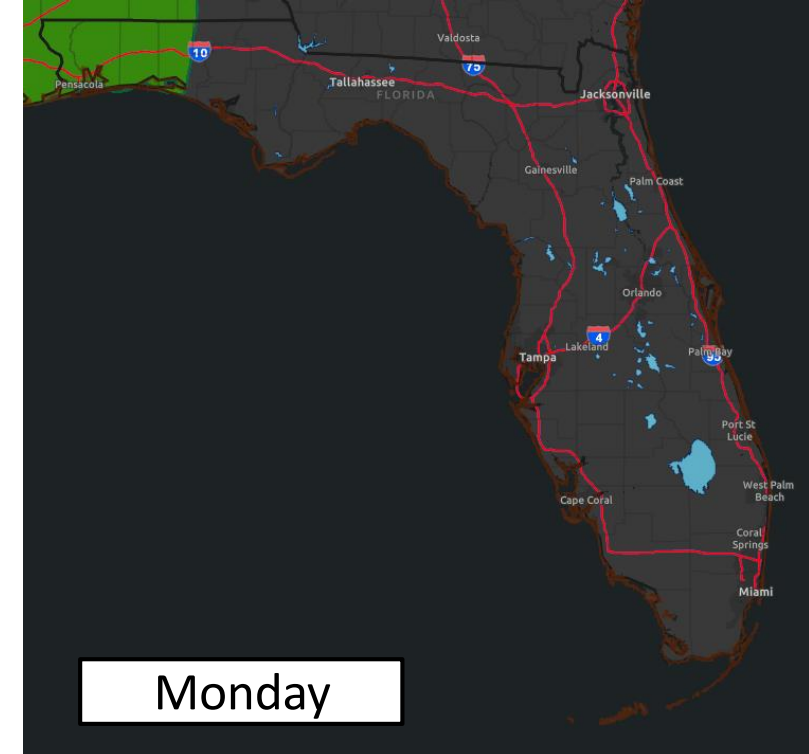
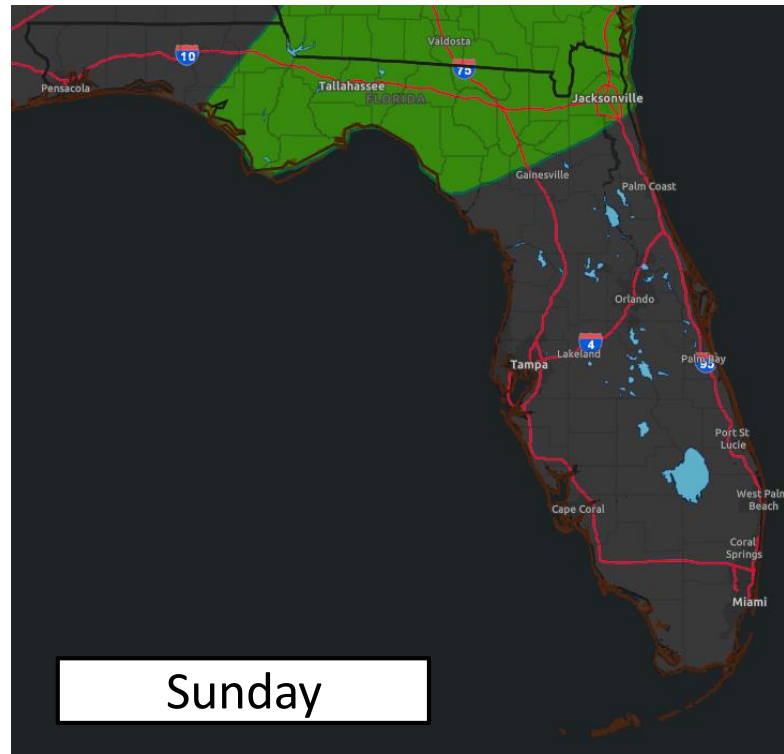
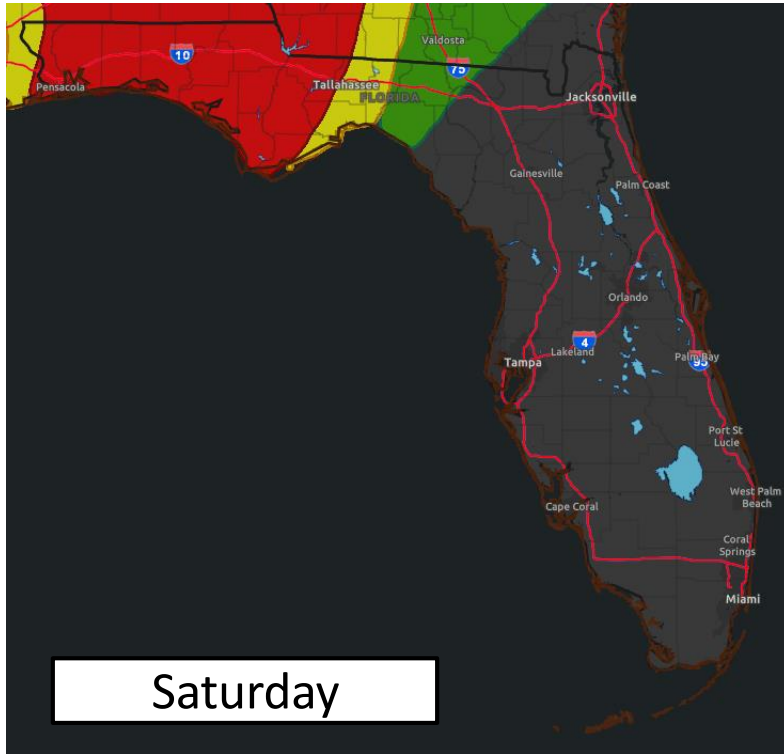






# Flash Flood Outlooks

From the Weather Prediction Center



Risk of rainfall exceeding flash flood guidance within 25 miles of a point to the right of a line

**HIGH: > 50%**

**SLGT: 10%-20%**

**MDT: 20%-50%**

**MRGL: 5%-10%**



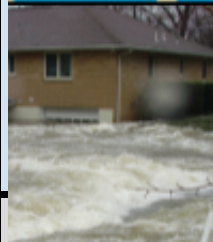
A few remaining bands of heavy rainfall will move through the Panhandle today, which could still lead to flash flooding if training occurs. Sunday and Monday, less coverage of storms is expected, but a localized flood threat remains.



# Flash Flood Risk Categories

## Understanding the Weather Prediction Center Risk Scale

### Understanding WPC Excessive Rainfall Risk Categories

<div>No Area/Label</div> <div>Flash floods are generally not expected.</div> <div><a href="http://www.wpc.ncep.noaa.gov">www.wpc.ncep.noaa.gov</a> @NWSWPC</div>	<div>MARGINAL (MRGL)</div> <div>Isolated flash floods possible</div> <div>Localized and primarily affecting places that can experience rapid runoff with heavy rainfall.</div>	<div>SLIGHT (SLGT)</div> <div>Scattered flash floods possible</div> <div>Mainly localized. Most vulnerable are urban areas, roads, small streams and washes. Isolated significant flash floods possible.</div>	<div>MODERATE (MDT)</div> <div>Numerous flash floods likely</div> <div>Numerous flash flooding events with significant events possible. Many streams may flood, potentially affecting larger rivers.</div>	<div>HIGH (HIGH)</div> <div>Widespread flash floods expected</div> <div>Severe, widespread flash flooding. Areas that don't normally experience flash flooding, could. Lives and property in greater danger.</div>
<div>Flash flooding near me?</div> <div>Flash Flooding</div> <div>NO Flash Flooding</div>				
<div> WEATHER PREDICTION CENTER</div> <div></div>	<div>Risk of rainfall exceeding flash flood guidance within 25 miles of a point to the right of a line</div> <div>HIGH: &gt; 50%SLGT: 10%-20%</div> <div>MDT: 20%-50%MRGL: 5%-10%</div>			<div></div>



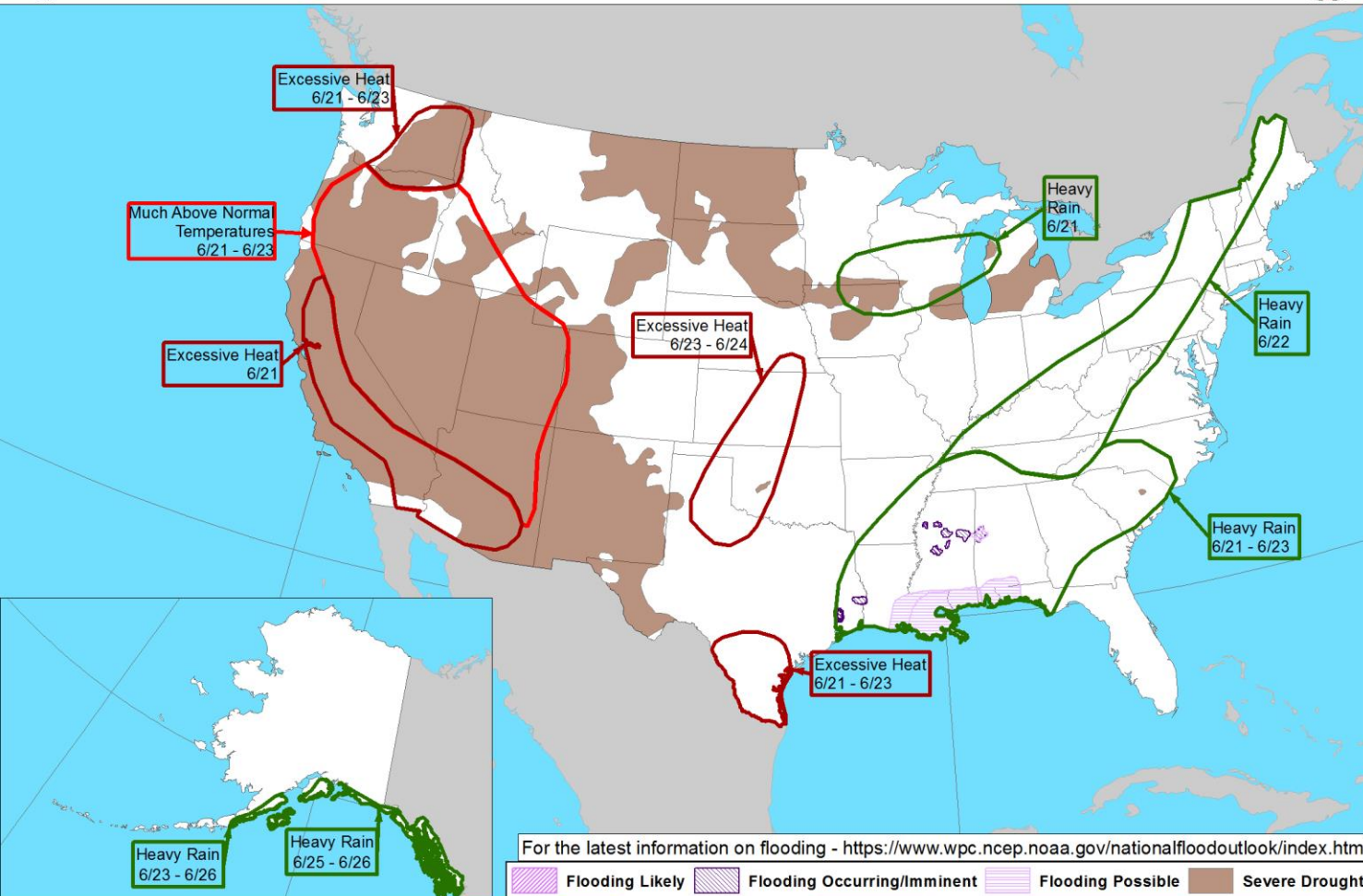


# Hazard Outlook

From the [Weather Prediction Center](#)



Day 3-7 U.S. Hazards Outlook  
Valid: 06/21/2021-06/25/2021



Locally heavy rainfall is still possible across the Panhandle heading into the first part of next week. This will exacerbate flooding concerns

Weather Prediction Center

Made: 06/18/2021 3PM EDT

Follow us: [f](#)

[www.wpc.ncep.noaa.gov](https://www.wpc.ncep.noaa.gov)



# Current & Forecast River Flooding

## Panhandle – Southeast River Forecast Center

### Rivers Currently in or Forecast to Reach Flood Stage:

- [Perdido River at Barrineau Park](#) – RISING
- [Escambia River near Century](#) – RISING
- [Big Coldwater Creek near Milton](#) – RISING
- [Blackwater River near Baker](#) – RISING
- [Shoal River near Crestview](#) – RISING

Rises are possible along the Choctawhatchee and Chipola Rivers, but they are forecast to remain below minor flood stage.

More details on river levels available at the [Southeast River Forecast Center website](#).



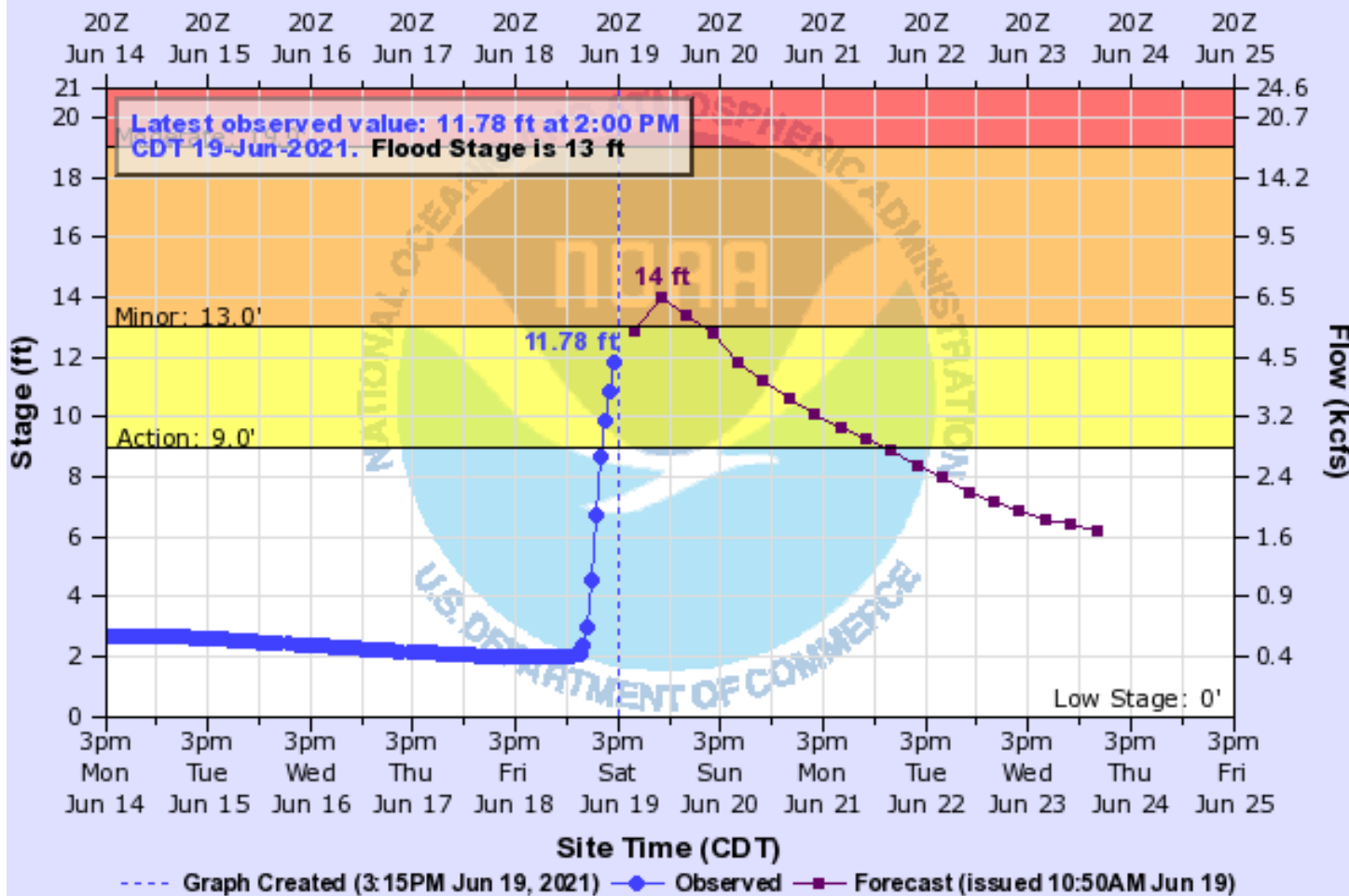


# Perdido River near Barrineau Park

[Hydrograph Link](#)

## PERDIDO RIVER NEAR BARRINEAU PARK

Universal Time (UTC)



BRPF1(plotting HGIRG) "Gage 0" Datum: 28'

Observations courtesy of US Geological Survey

- 17.55 Water reaches the first floor of Adventures Perdido River Office Building.
- 13 River begins to leave its banks at the parking lot of Adventures Perdido River. Begins to threaten several permanently parked travel trailers.



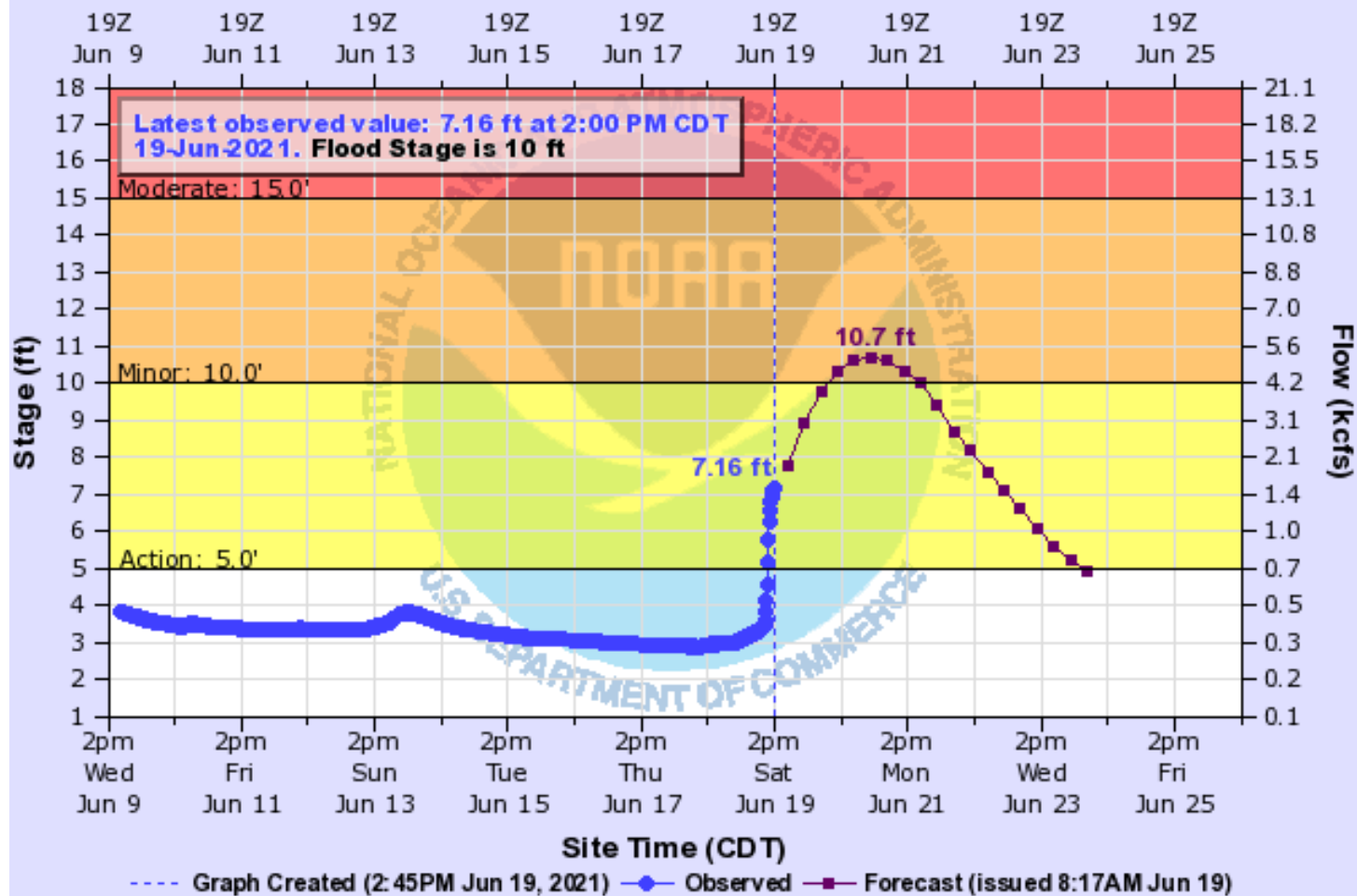


# Big Coldwater Creek near Milton

[Hydrograph Link](#)

## BIG COLDWATER CREEK NEAR MILTON

Universal Time (UTC)



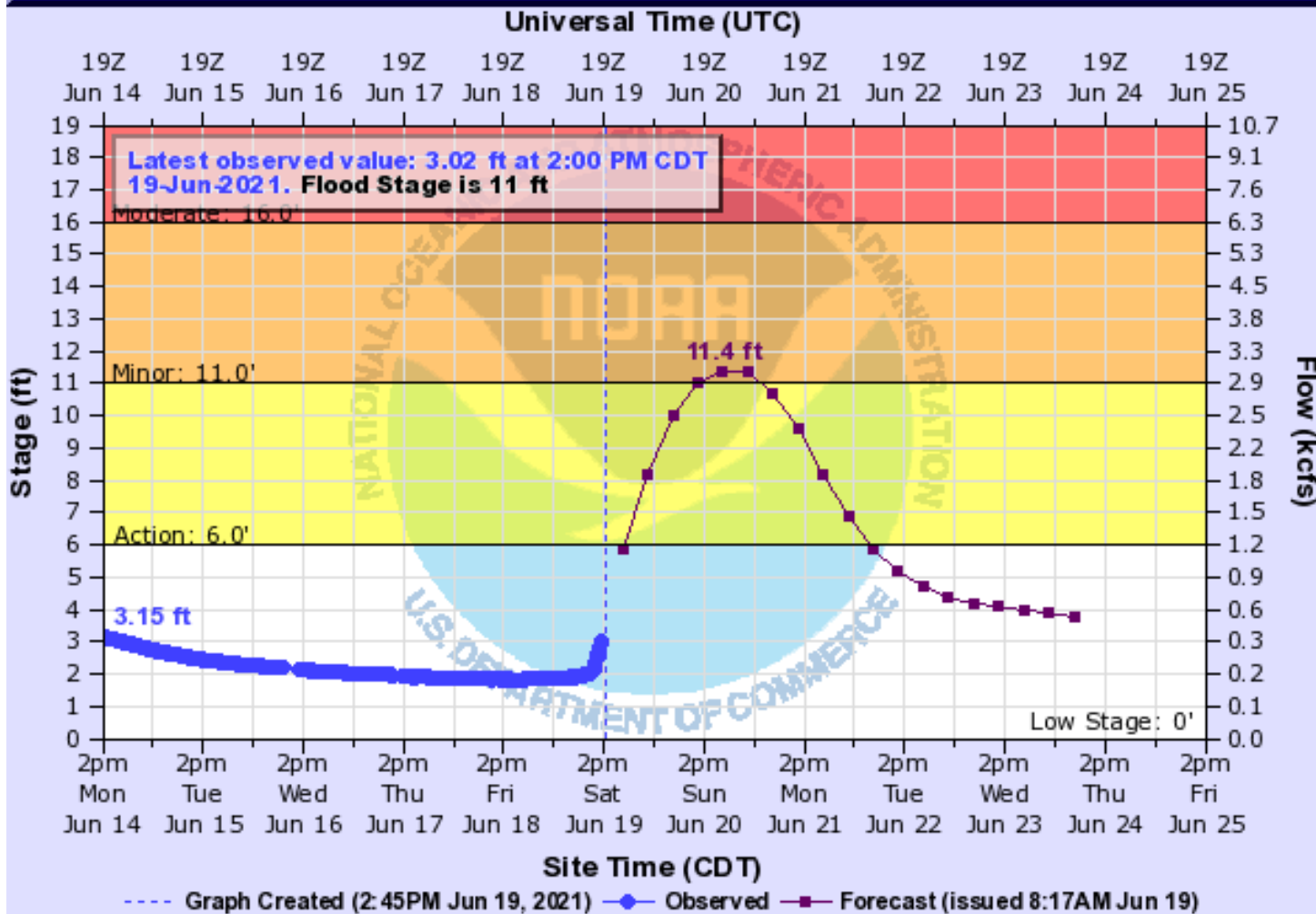
- 10 Flooding of lowlands and some fish camps will occur.



# Blackwater River near Baker

[Hydrograph Link](#)

## BLACKWATER RIVER (AL) NEAR BAKER



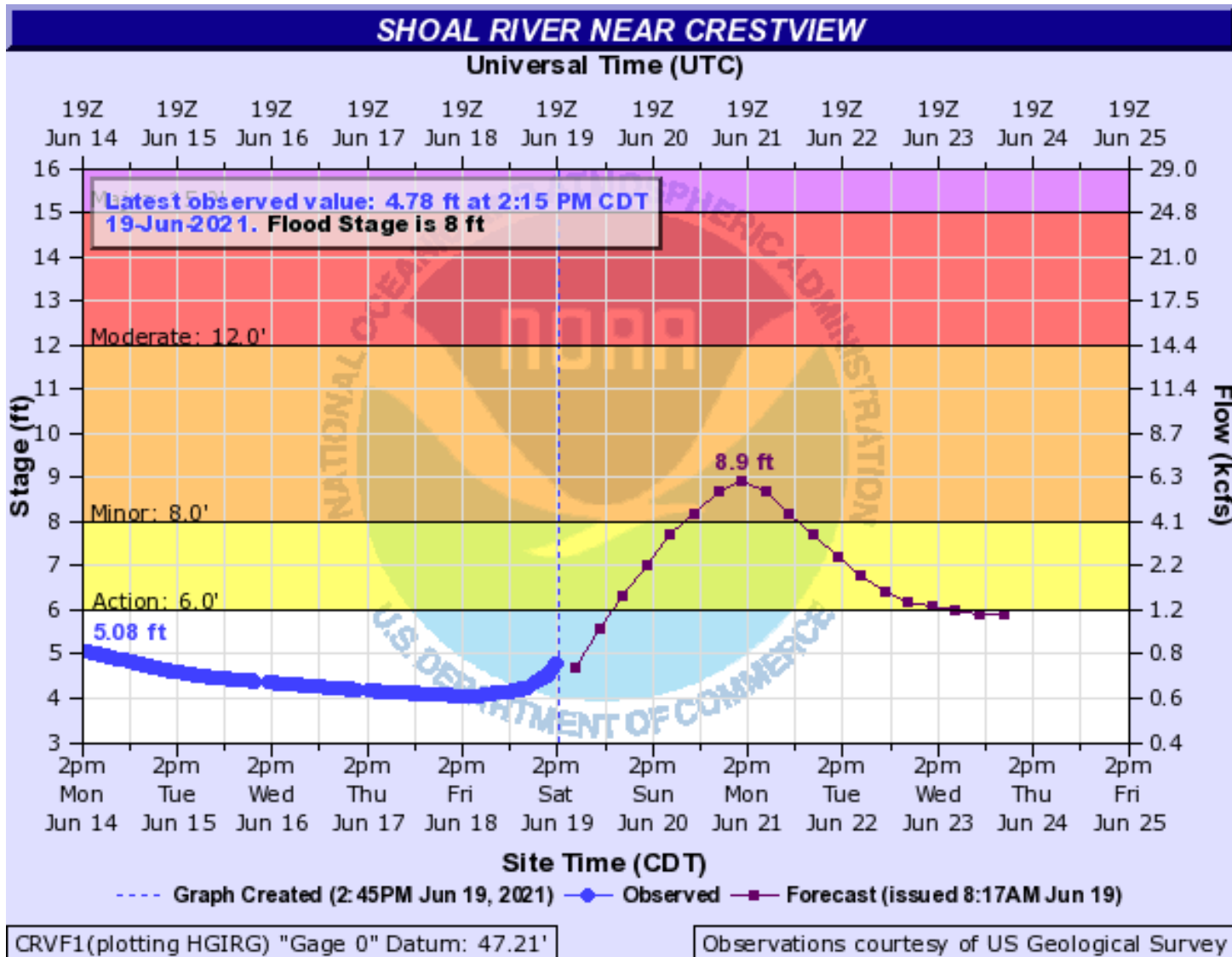
BAKF1(plotting HGIRG) "Gage 0" Datum: 60.5'

- 16 Some residential flooding occurs downstream from the Highway 4 bridge.
- 14.5 Flooding of Cotton Ridge Park in Baker begins.
- 11 Minor flooding of secondary roads and lowlands from the Highway 4 Bridge downstream.
- 9.5 Kennedy and Peaden Bridges are flooded upstream of Highway 4 bridge.



# Shoal River near Crestview

[Hydrograph Link](#)



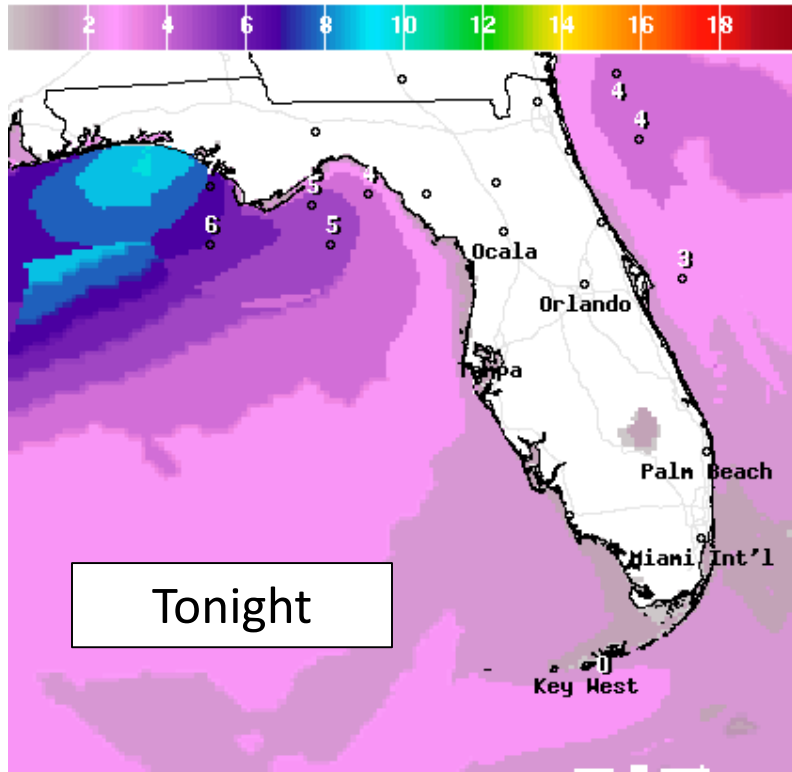
- 11 Flooding becomes a threat to the Trevor Court and Rattlesnake Bluff areas.
- 10 Some flooding of trailers north of the Okaloosa Correctional Institute. Water surrounds home on Sowel Road.
- 8.5 Water in yards on Sowel Road.
- 8 Minor flooding of low lying areas.





# Forecast Wave Heights

## Saturday and Sunday

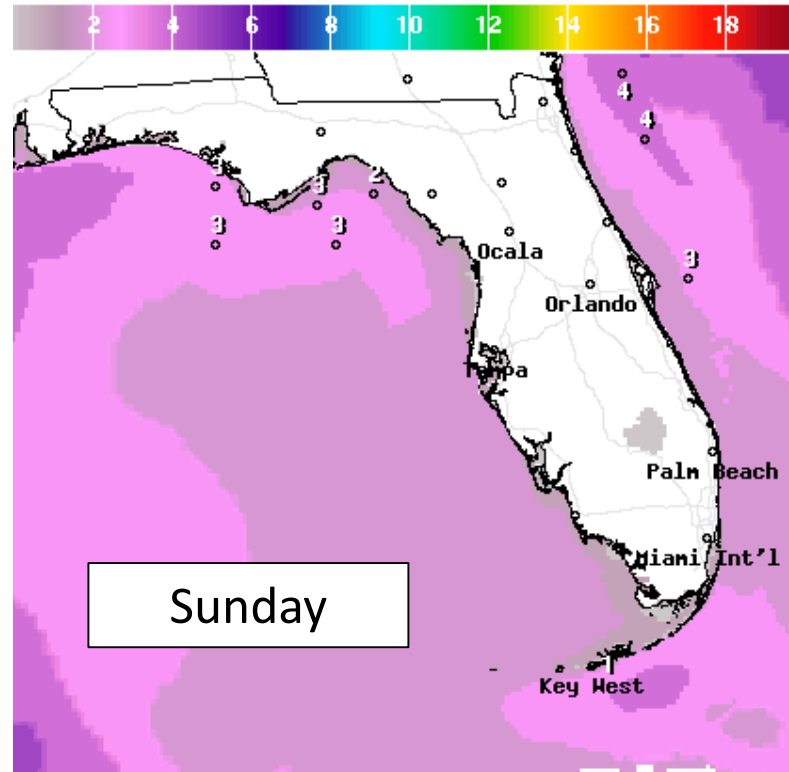


Wave Height(ft) Ending Sun Jun 20 2021 2AM EDT  
(Sun Jun 20 2021 06Z)



National Digital Forecast Database

20z issuance Graphic created-Jun 19 4:19PM EDT

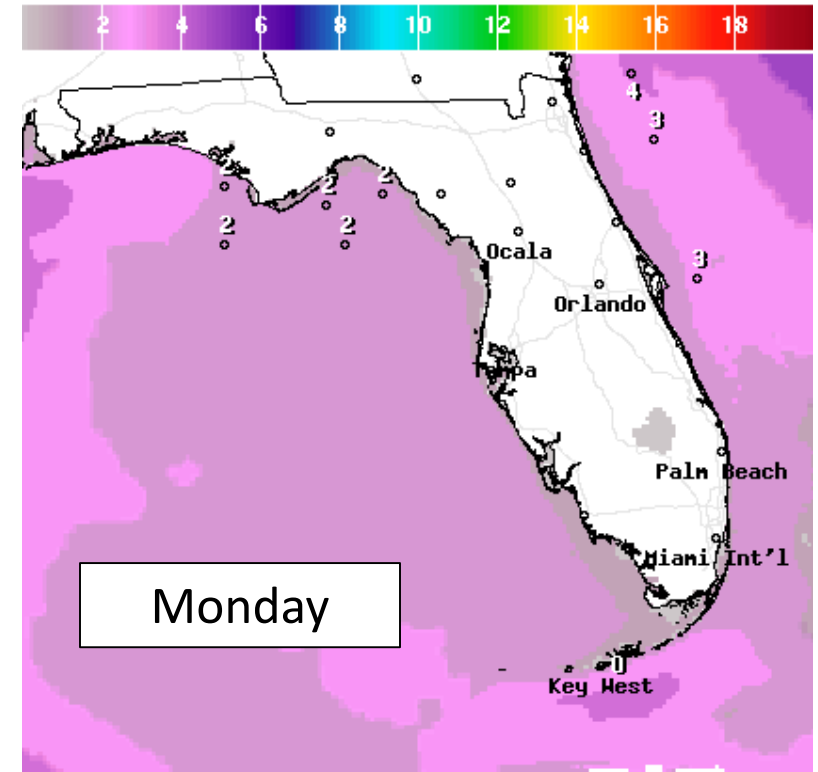


Wave Height(ft) Ending Mon Jun 21 2021 8AM EDT  
(Mon Jun 21 2021 12Z)



National Digital Forecast Database

20z issuance Graphic created-Jun 19 4:20PM EDT



Wave Height(ft) Ending Mon Jun 21 2021 8PM EDT  
(Tue Jun 22 2021 00Z)



National Digital Forecast Database

20z issuance Graphic created-Jun 19 4:20PM EDT



Surf will gradually subside on Sunday. High Surf Warnings and Advisories is in effect from Escambia to Gulf Counties. Dangerous rip currents are likely to continue along the Panhandle beaches.



# Overall Summary

## Florida Outlook:

### **Tropical Depression Claudette**

- Claudette is located about 95 miles west of Montgomery, AL, moving northeast at 16 mph.
- Maximum sustained winds are near 35 mph. Some additional weakening is expected, but Claudette could become a tropical storm again as it moves over the Carolinas and out into the Atlantic.
- An additional 2-4" of rain (locally 6") remains possible across the Florida Panhandle and Big Bend, which could result in localized flooding. Flash Flood Watches are in effect for the entire Florida Panhandle west of the Apalachicola River.
- A low-end tornado threat is possible in the Panhandle, and the Storm Prediction Center has outlined these areas in a Marginal to Slight Risk of isolated tornadoes (level 1-2 of 5). The tornado threat could also extend into Sunday near the FL/GA line.
- Dangerous rip currents and high surf are expected along Gulf Coast beaches through the weekend.

This will be the final packet for Claudette. For the latest information on the tropics, please visit the National Hurricane Center website at [www.hurricanes.gov](http://www.hurricanes.gov).



# TROPICAL UPDATE



Created by:

Cameron Young, Assistant State Meteorologist

[Cameron.Young@em.myflorida.com](mailto:Cameron.Young@em.myflorida.com)

State Meteorological Support Unit

Florida Division of Emergency Management

Users wishing to subscribe (approval pending) to this distribution list, register at:

[https://public.govdelivery.com/accounts/FLDEM/subscriber/new?topic\\_id=SERT\\_Met\\_Tropics](https://public.govdelivery.com/accounts/FLDEM/subscriber/new?topic_id=SERT_Met_Tropics).

Other reports available for subscription are available at:

<https://public.govdelivery.com/accounts/FLDEM/subscriber/new?preferences=true>