



# TROPICAL UPDATE



8:30 AM EDT

Saturday, June 19, 2021

Tropical Storm Claudette

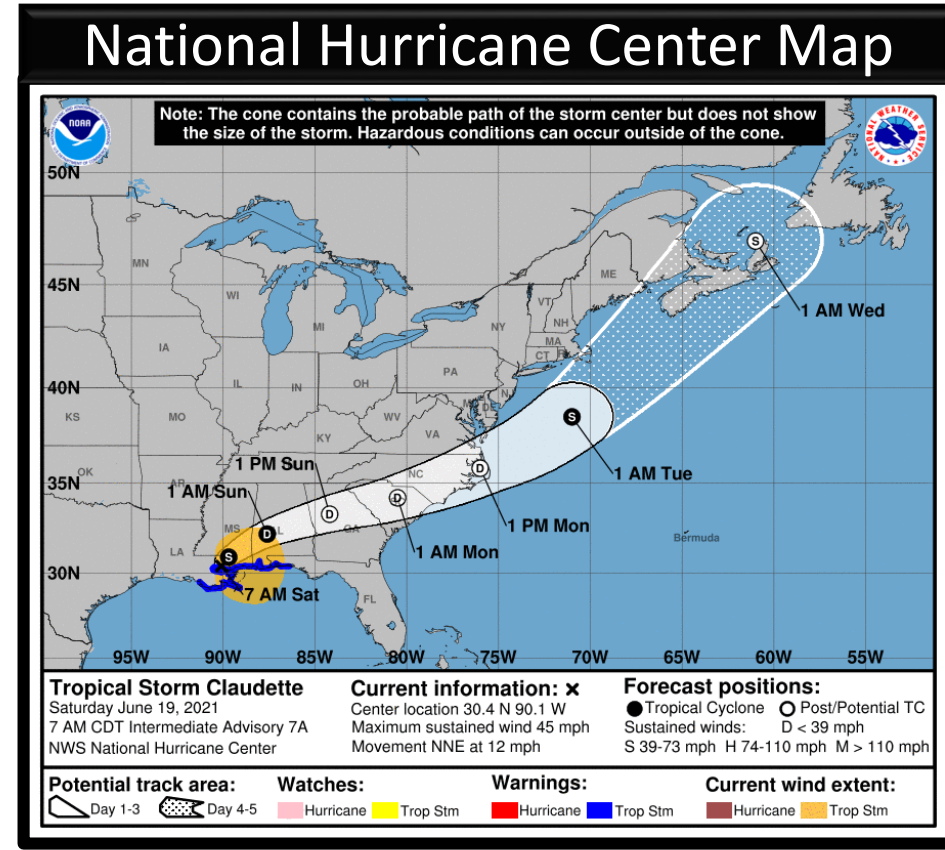
This update is intended for government and emergency response officials, and is provided for informational and situational awareness purposes only. Forecast conditions are subject to change based on a variety of environmental factors. For additional information, or for any life safety concerns with an active weather event please contact your County Emergency Management or Public Safety Office, local National Weather Service forecast office, or visit the National Hurricane Center website at [www.hurricanes.gov](http://www.hurricanes.gov).



# Tropical Storm Claudette

8 AM ET Saturday: Florida Threats & Changes Since Last Packet

|                | MINIMAL | Low      | MODERATE | HIGH | EXTREME |
|----------------|---------|----------|----------|------|---------|
| WINDS          |         |          |          |      |         |
| STORM SURGE    |         |          |          |      |         |
| FLASH FLOODING |         |          |          |      |         |
| TORNADOES      |         |          |          |      |         |
|                | Low     | MODERATE |          | HIGH |         |
| RIP CURRENTS   |         |          |          |      |         |



## Overview/Recent Changes:

PTC #3 became Tropical Storm Claudette over southeastern Louisiana at 5 AM ET this morning. However, this does not change any impacts to Florida. Significant flash flooding and isolated tornadoes are the primary threats. A widespread 5-8" with localized totals of 10-15" is expected, especially in the western half of the Panhandle. Gusty winds to tropical storm force and minor storm surge of 1-3' are also possible in the Panhandle.

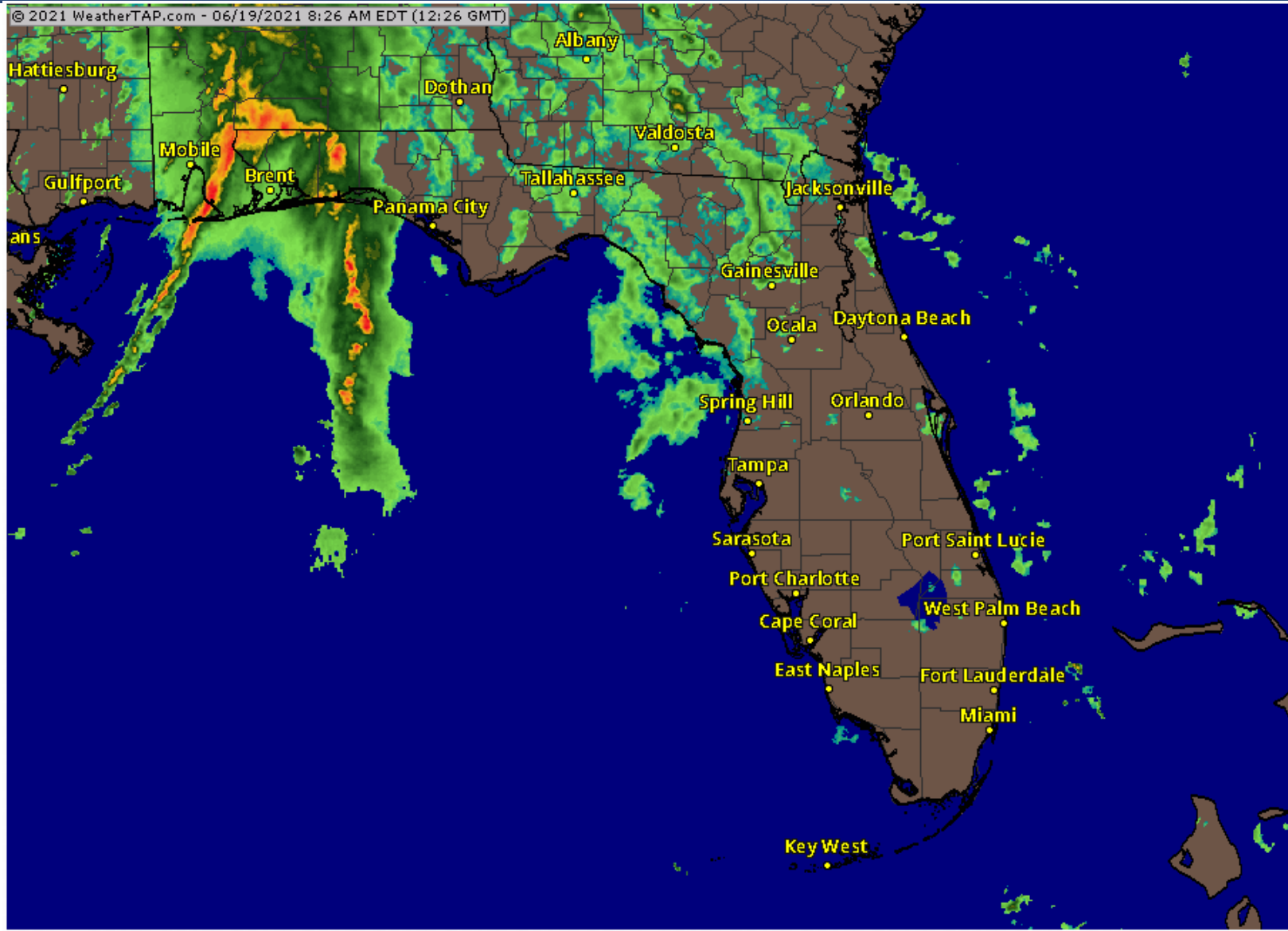


# Current Florida Radar

As of 8:30 AM ET

Bands of heavy rain and isolated tornadoes are moving into the western Panhandle this morning. These bands are producing rainfall rates of 3-5" per hour, which could lead to significant flash flooding.

**An 81 mph wind gust was reported around 7:50 AM ET at the Pensacola International Airport.**





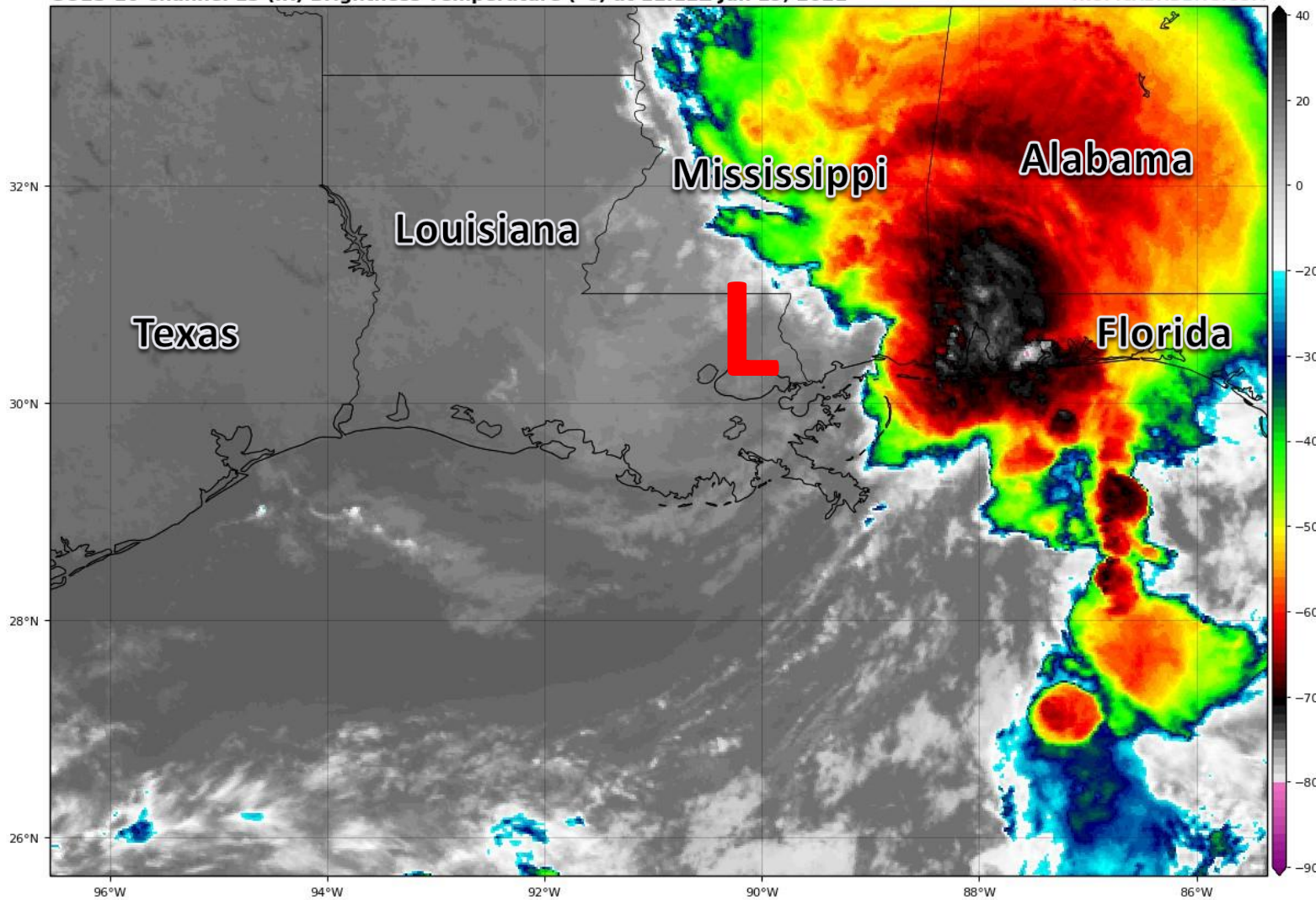


# Satellite Imagery

## Tropical Storm Claudette

GOES-16 Channel 13 (IR) Brightness Temperature (°C) at 11:12Z Jun 19, 2021

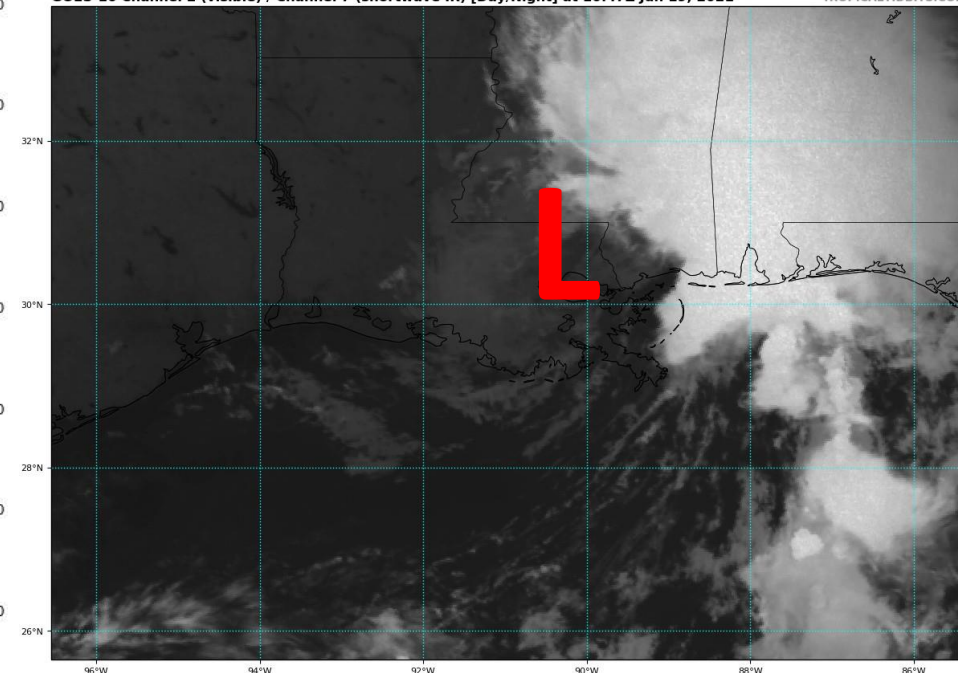
TROPICALTIDBITS.COM



PTC #3's circulation became better defined after it moved onshore in southeastern Louisiana this morning, allowing it to be classified as a tropical storm. However, impacts remain the same, with nearly all of the weather well to the east of the center.

GOES-16 Channel 2 (visible) / Channel 7 (shortwave IR) [Day/Night] at 10:47Z Jun 19, 2021

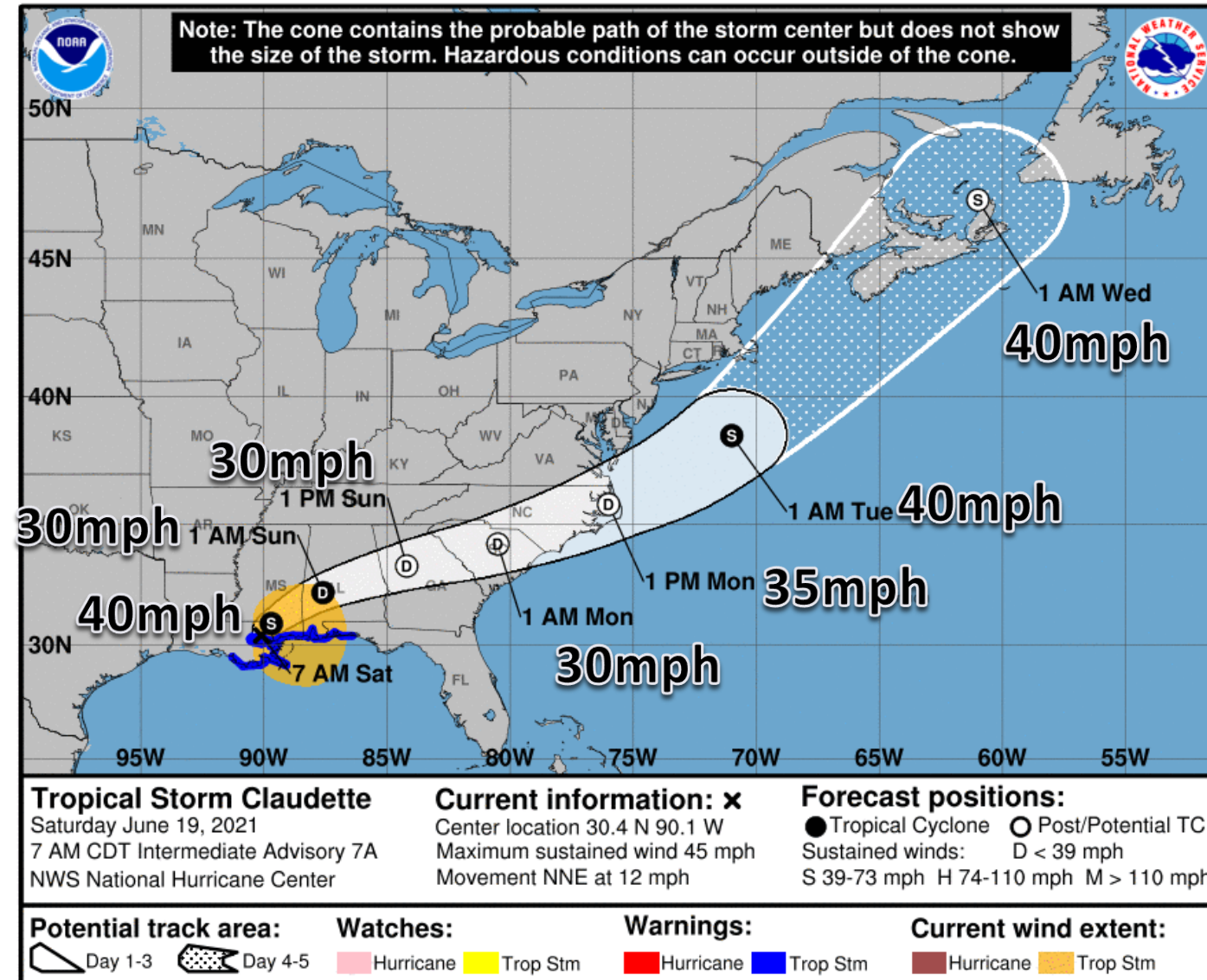
TROPICALTIDBITS.COM





# Official Forecast Track – TS Claudette

From the National Hurricane Center – ([LINK](#))



- Tropical Storm Claudette made landfall overnight in southeast Louisiana. It is now centered 30 miles north of New Orleans, moving north-northeast at 12 mph.
- A turn toward the northeast is expected later today.
- Maximum sustained winds are near 45 mph, but Claudette will gradually weaken as its over land.
- Claudette could become a tropical storm again Monday night over the Atlantic off the Northeast US coast.

**\*\*\*DO NOT FOCUS ON WHERE THE CENTER GOES\*\*\***  
**Impacts will extend well to the east of the center of the storm, including the Florida Panhandle. Flash flooding, dangerous rip currents, and isolated tornadoes will all be possible.**





# Key Messages

From the National Hurricane Center



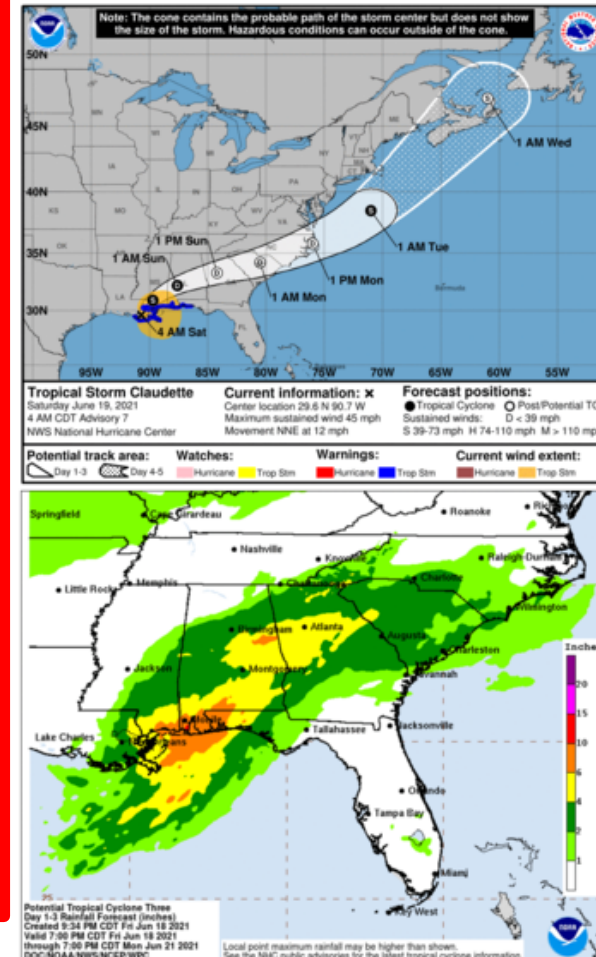
## Key Messages for Tropical Storm Claudette

Advisory 7: 4:00 AM CDT Sat Jun 19, 2021



1. Claudette is expected to produce heavy rainfall and life-threatening flash flooding across coastal Mississippi and Alabama, and the far western Florida Panhandle through the afternoon. Considerable flash, urban, and small stream flooding, will continue through the weekend along the central Gulf Coast, with flood impacts spreading northeastward into interior portions of the Southeast.

2. Tropical storm conditions are occurring along portions of the central Gulf Coast from east of Morgan City, Louisiana, to the Okaloosa/Walton County line, Florida, including New Orleans. These winds will spread inland and continue through this afternoon.

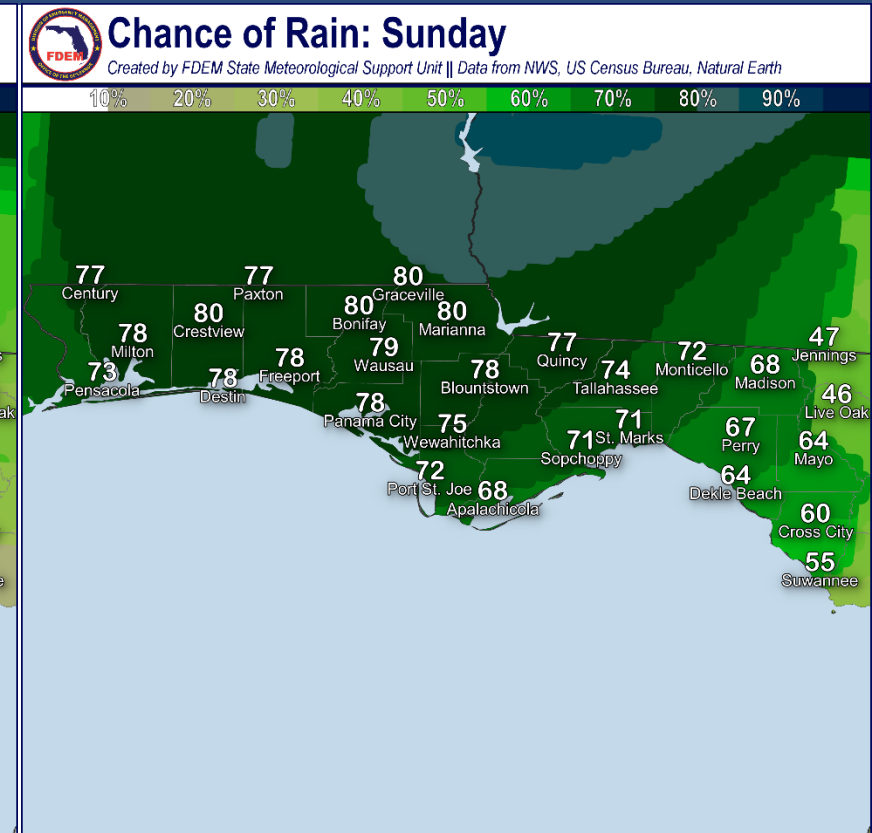
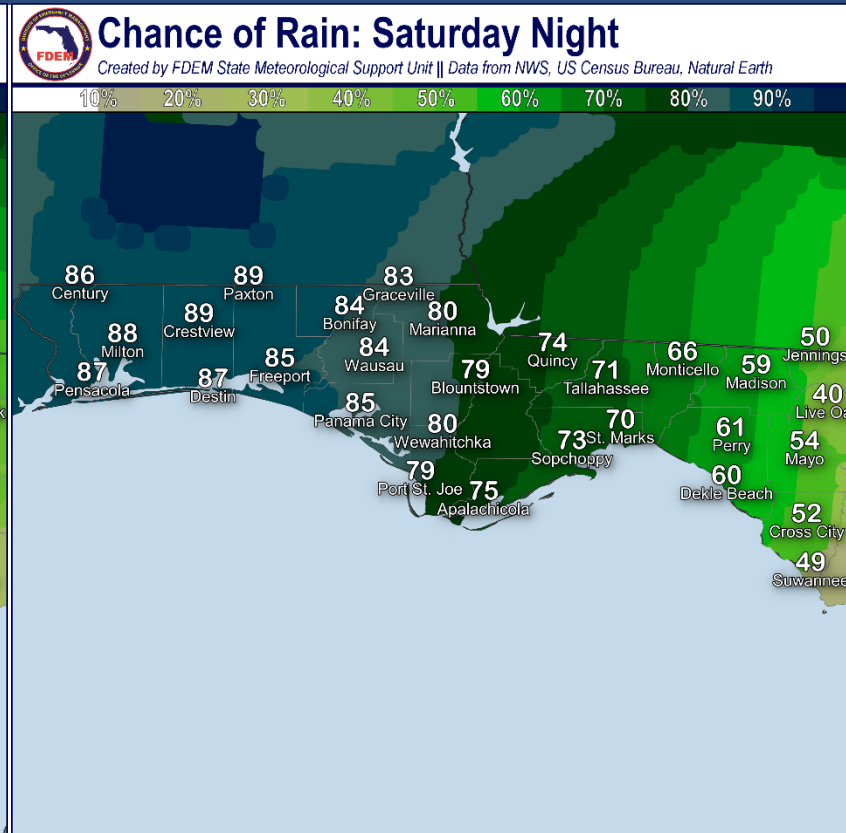
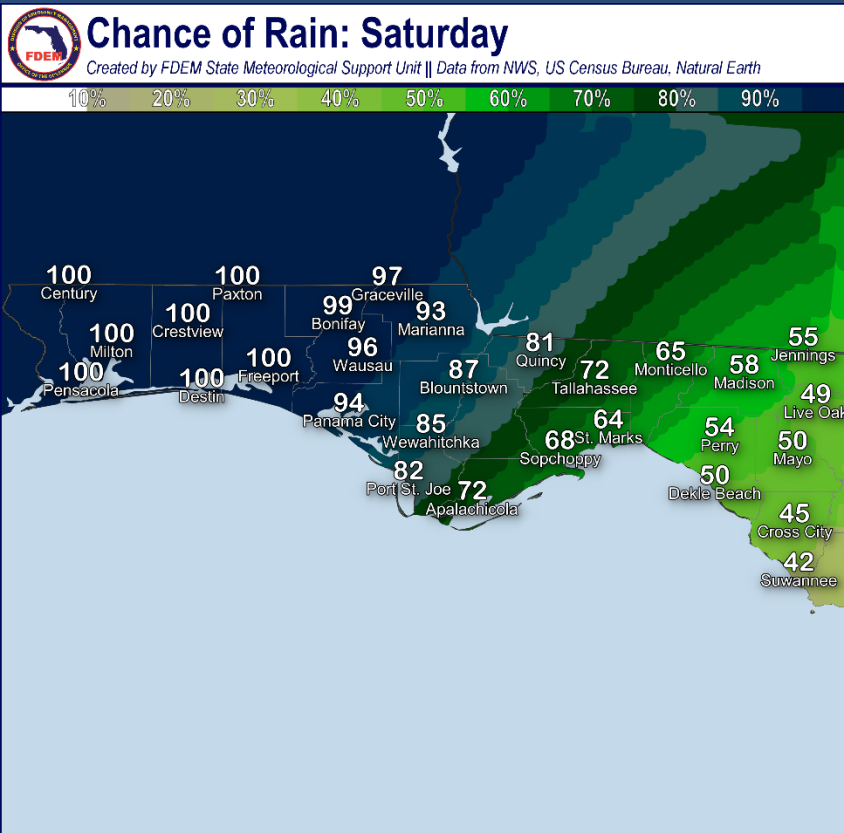


For more information go to [hurricanes.gov](https://hurricanes.gov)



# Forecast Rain Chances

## Today through Sunday – Tropical Storm Claudette

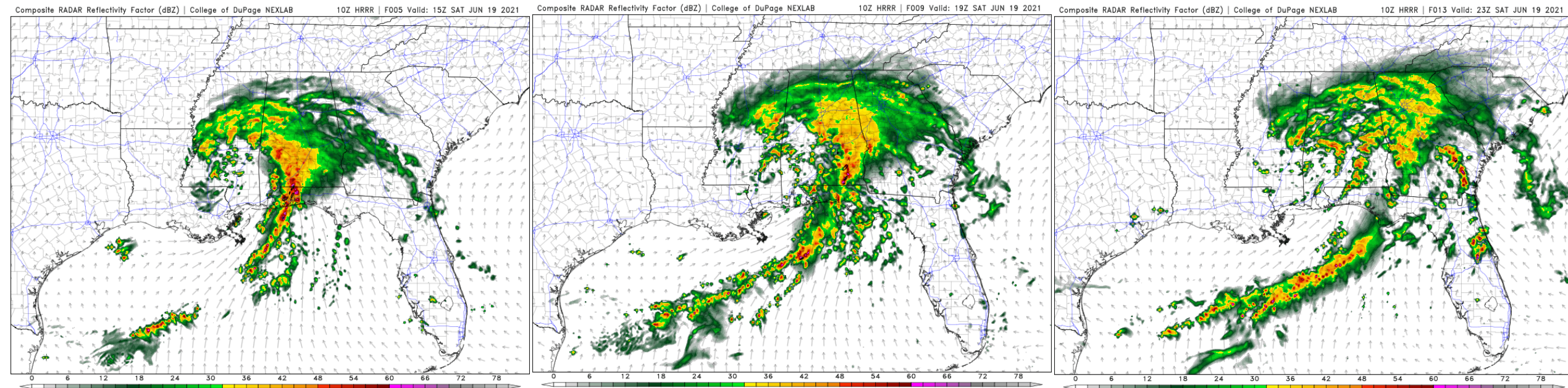


Heavy rain is guaranteed across the Panhandle today and tonight. Then, additional bands of rain may develop again on Sunday, though less in coverage.



# Model Forecast Radar

**\*\*\*Only Model Guidance – Time & Position Will Vary\*\*\***



Around Midday

This Afternoon

This Evening

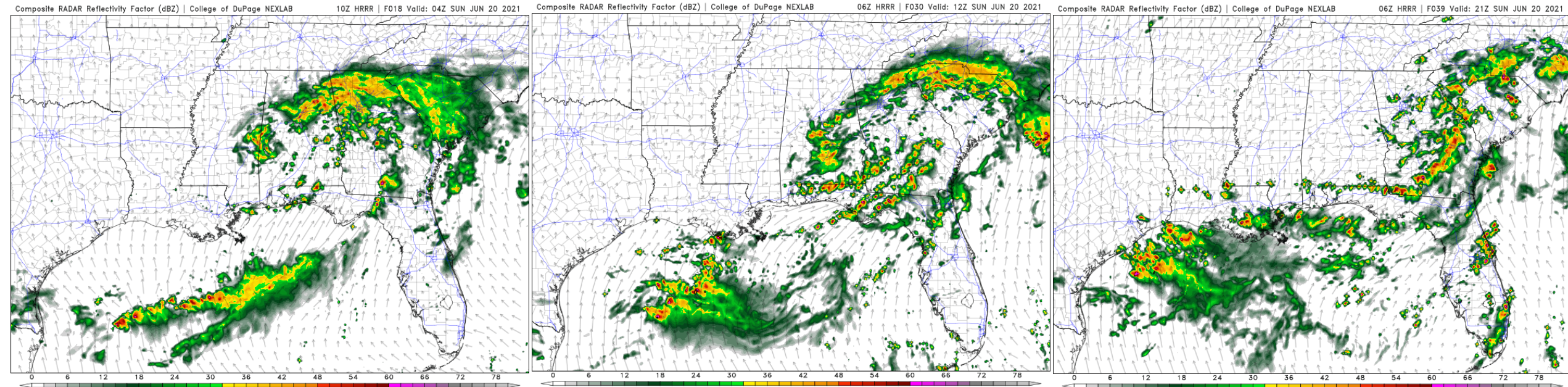
Heavy rain bands will slowly progress eastward across the Panhandle through today. These bands will continue to produce the threat of significant flash flooding and isolated tornadoes.





# Model Forecast Radar

**\*\*\*Only Model Guidance – Time & Position Will Vary\*\*\***



Late Tonight

Sunday Morning

Sunday Afternoon

The consolidated bands will break up through tonight. Additional showers and storms will develop on Sunday across the Panhandle and Big Bend. These could still be heavy rainfall producers, which could exacerbate flooding concerns on top of saturated soils.



# Severe Weather Outlook Saturday

From the Storm Prediction Center

## 5 - High

Widespread severe storms expected

## 4 - Moderate

Widespread severe storms likely

## 3 - Enhanced

Numerous severe storms possible

## 2 - Slight

Scattered severe storms possible

## 1 - Marginal

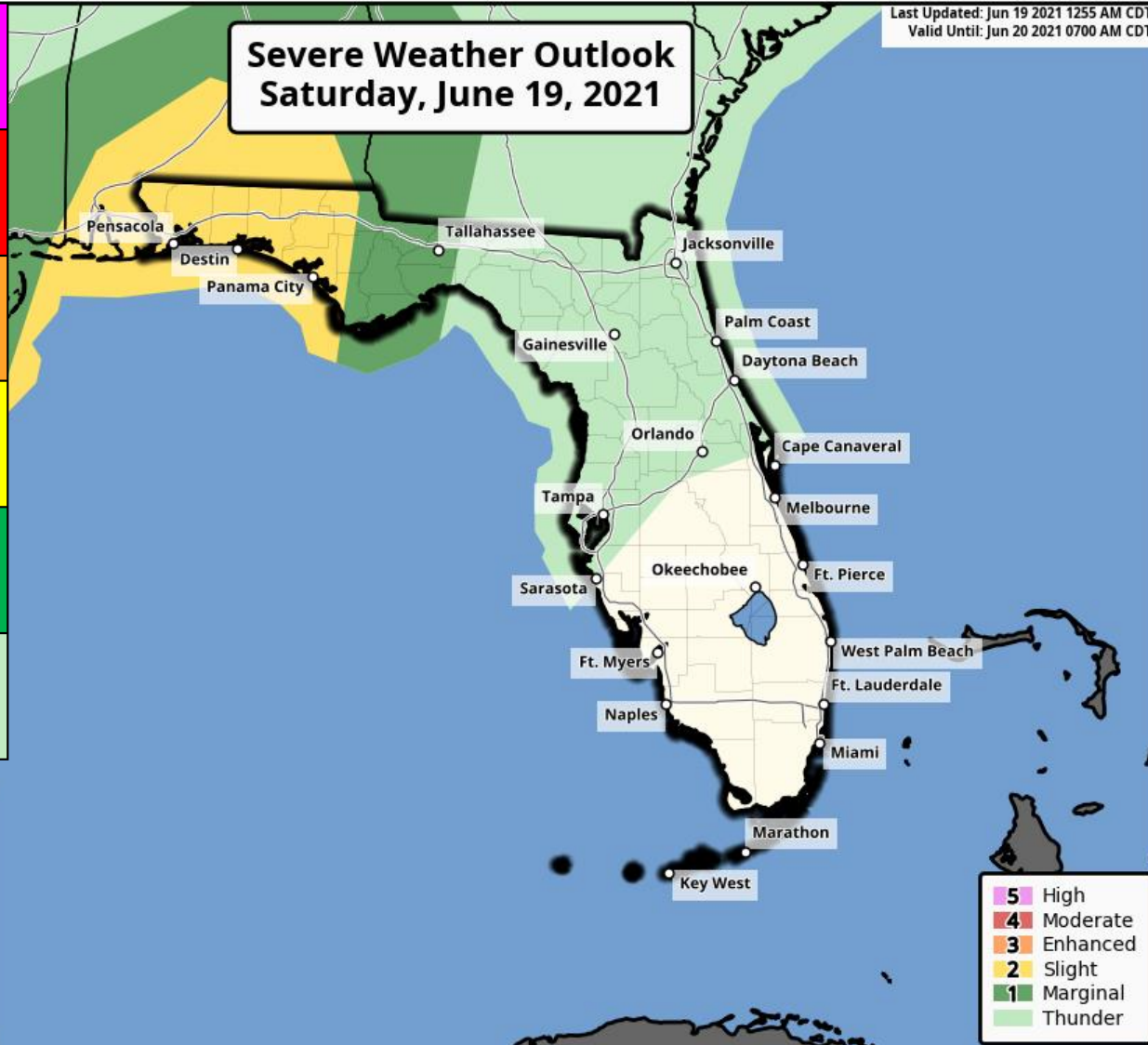
Isolated severe storms possible

## Thunderstorms

No severe storms expected

## Severe Weather Outlook Saturday, June 19, 2021

Last Updated: Jun 19 2021 1255 AM CDT  
Valid Until: Jun 20 2021 0700 AM CDT



As the outer bands of Claudette move through, there will be a low-end tornado threat.

The Storm Prediction Center has outlined areas from Tallahassee westward in a Marginal to Slight Risk for severe weather (level 1 of 5).



National Weather Service  
Storm Prediction Center

<http://www.spc.noaa.gov>





# Tornado Watch

In Effect Until 12 PM ET/11 AM CT



Additional watches are likely to be issued for more of the Panhandle later this morning.



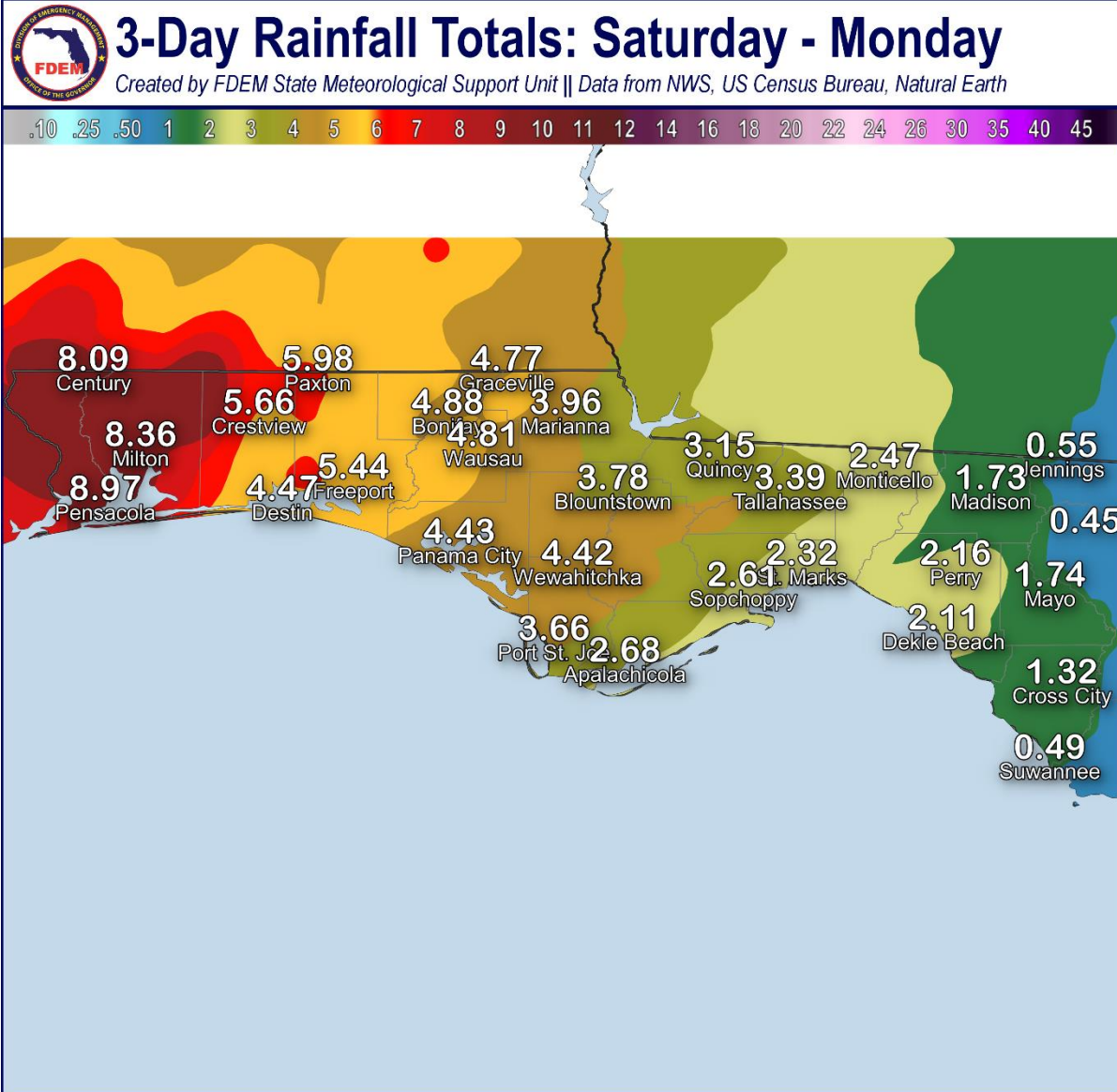
**Tornado Watch # 284 - Valid from 135 AM until 1100 AM CDT**





# Rainfall Totals Next 3 Days

Ending 8 AM ET Monday



A widespread 5-8" of rain is currently forecast across the Panhandle over the next 7 days, possibly up to 10-14" in western areas. Localized higher amounts are possible. Rainfall totals of 2-4" are possible across the Big Bend.

**These rainfall totals are highly dependent on where the rain bands set up!**



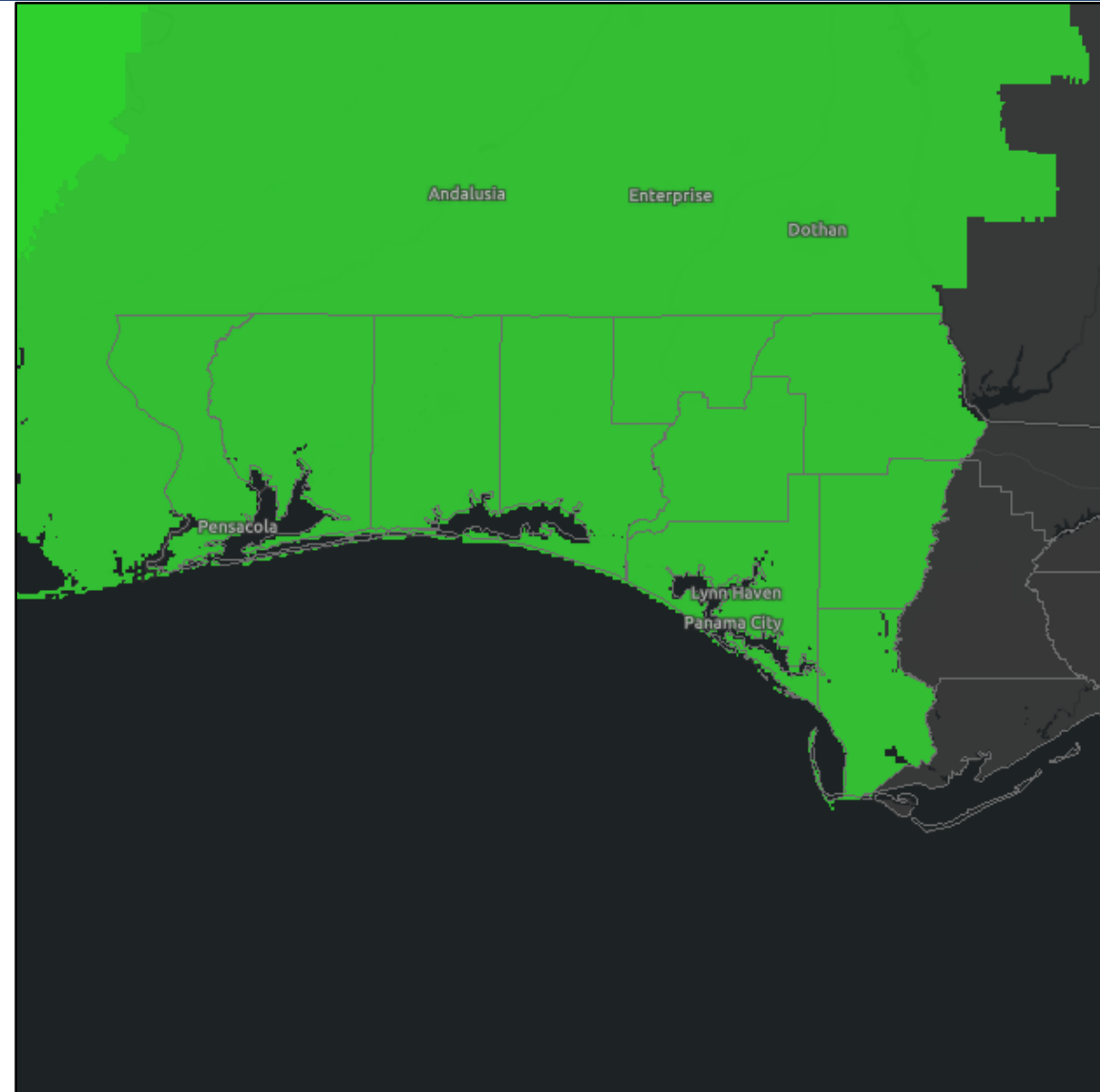
# Flash Flood Watches

Links: [NWS Mobile](#) | [NWS Tallahassee](#)

The Flash Flood Watch for Escambia, Santa Rosa and Okaloosa Counties ends 6 AM CT on Sunday.

The Flash Flood Watch for Walton, Holmes, Washington, Bay, Jackson, Calhoun, and Gulf until 7 PM CT on Sunday.

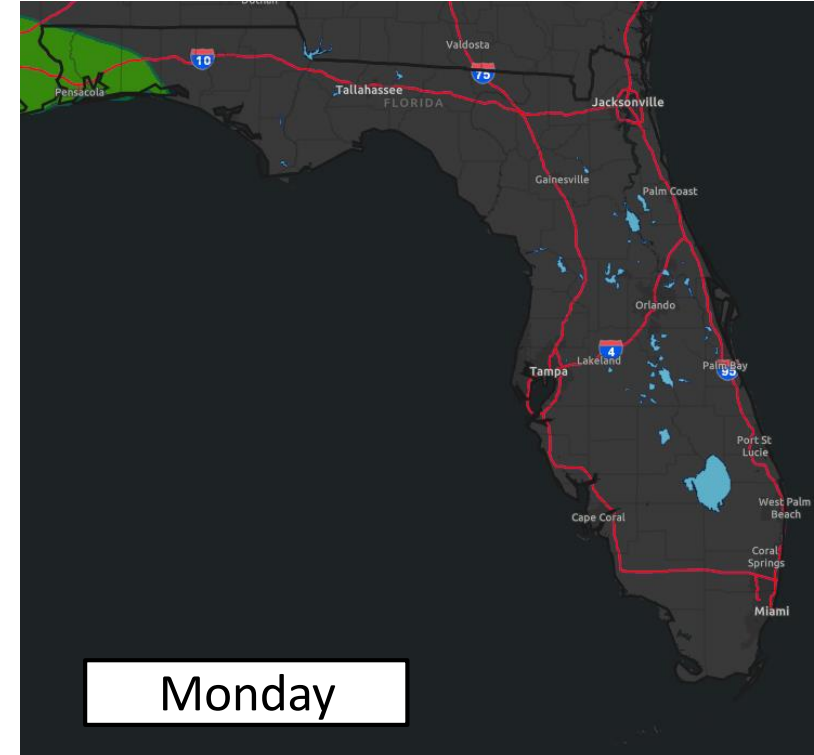
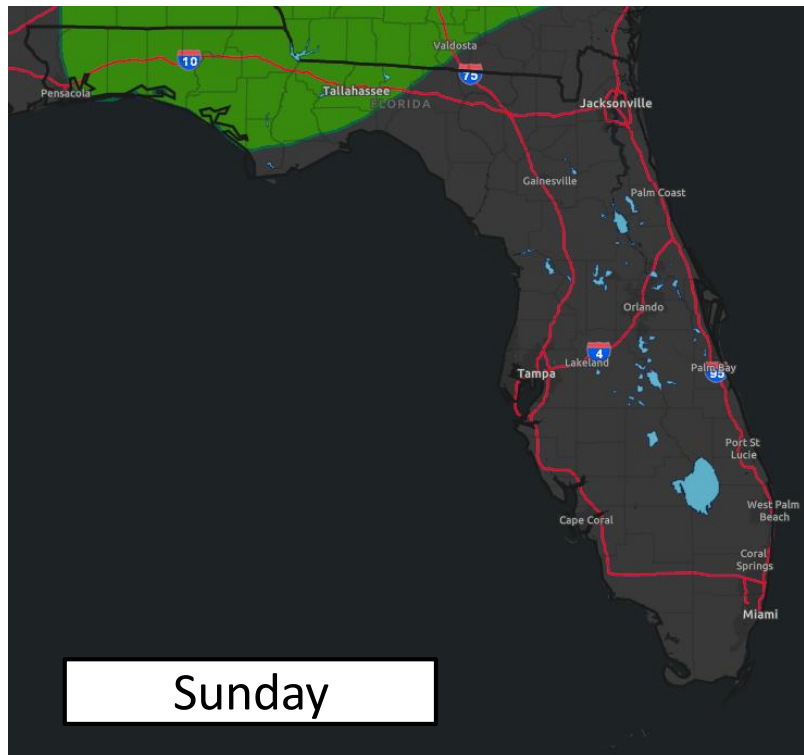
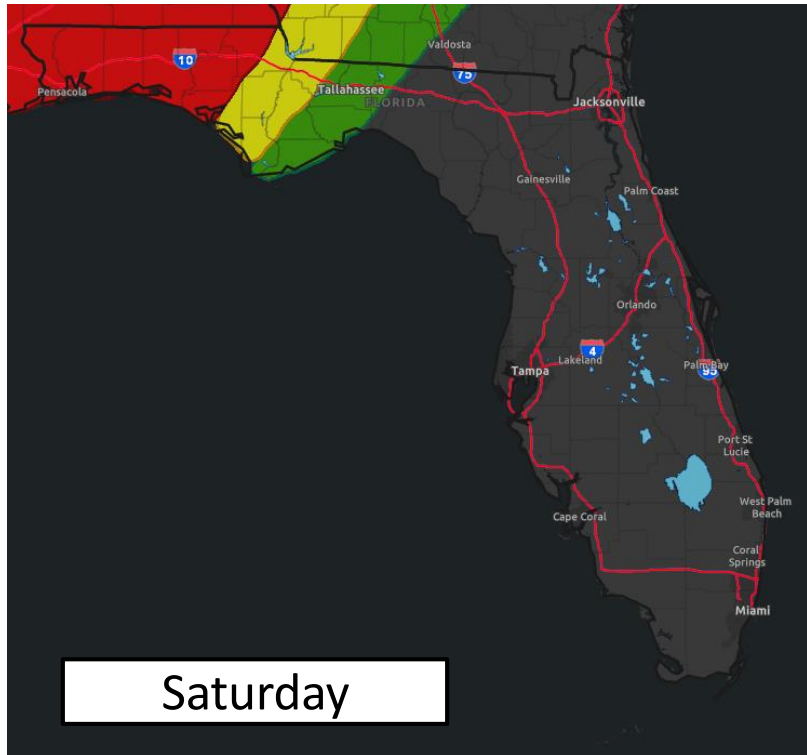
Widespread rainfall totals of 5-8 inches are expected with localized totals of 10-14 inches or more possible.





# Flash Flood Outlooks

From the Weather Prediction Center



Risk of rainfall exceeding flash flood guidance within 25 miles of a point to the right of a line

**HIGH: > 50%**

**SLGT: 10%-20%**

**MDT: 20%-50%**

**MRGL: 5%-10%**

Bands of heavy rain from Claudette will continue impacting the Panhandle through today, which could cause significant flash flooding. Less coverage of heavy rainfall is expected Sunday and Monday, but this could still cause flash flooding on top of saturated soils.



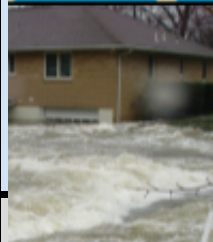




# Flash Flood Risk Categories

## Understanding the Weather Prediction Center Risk Scale

### Understanding WPC Excessive Rainfall Risk Categories

|  |  |  |  |  |
|--|--|--|--|--|
| <div>No Area/Label</div> <div>Flash floods are generally not expected.</div> <div><a href="http://www.wpc.ncep.noaa.gov">www.wpc.ncep.noaa.gov</a><br/>@NWSWPC</div> | <div>MARGINAL (MRGL)</div> <div>Isolated flash floods possible</div> <div>Localized and primarily affecting places that can experience rapid runoff with heavy rainfall.</div> | <div>SLIGHT (SLGT)</div> <div>Scattered flash floods possible</div> <div>Mainly localized. Most vulnerable are urban areas, roads, small streams and washes. Isolated significant flash floods possible.</div> | <div>MODERATE (MDT)</div> <div>Numerous flash floods likely</div> <div>Numerous flash flooding events with significant events possible. Many streams may flood, potentially affecting larger rivers.</div> | <div>HIGH (HIGH)</div> <div>Widespread flash floods expected</div> <div>Severe, widespread flash flooding. Areas that don't normally experience flash flooding, could. Lives and property in greater danger.</div> |
| <div>Flash flooding near me?</div> <div>Flash Flooding</div> <div>NO Flash Flooding</div>  |  |  |  |  |
| <div><br/>WEATHER PREDICTION CENTER</div>   |   | <div>Risk of rainfall exceeding flash flood guidance within 25 miles of a point to the right of a line</div> <div>HIGH: &gt; 50%SLGT: 10%-20%</div> <div>MDT: 20%-50%MRGL: 5%-10%</div>                        |  |   |

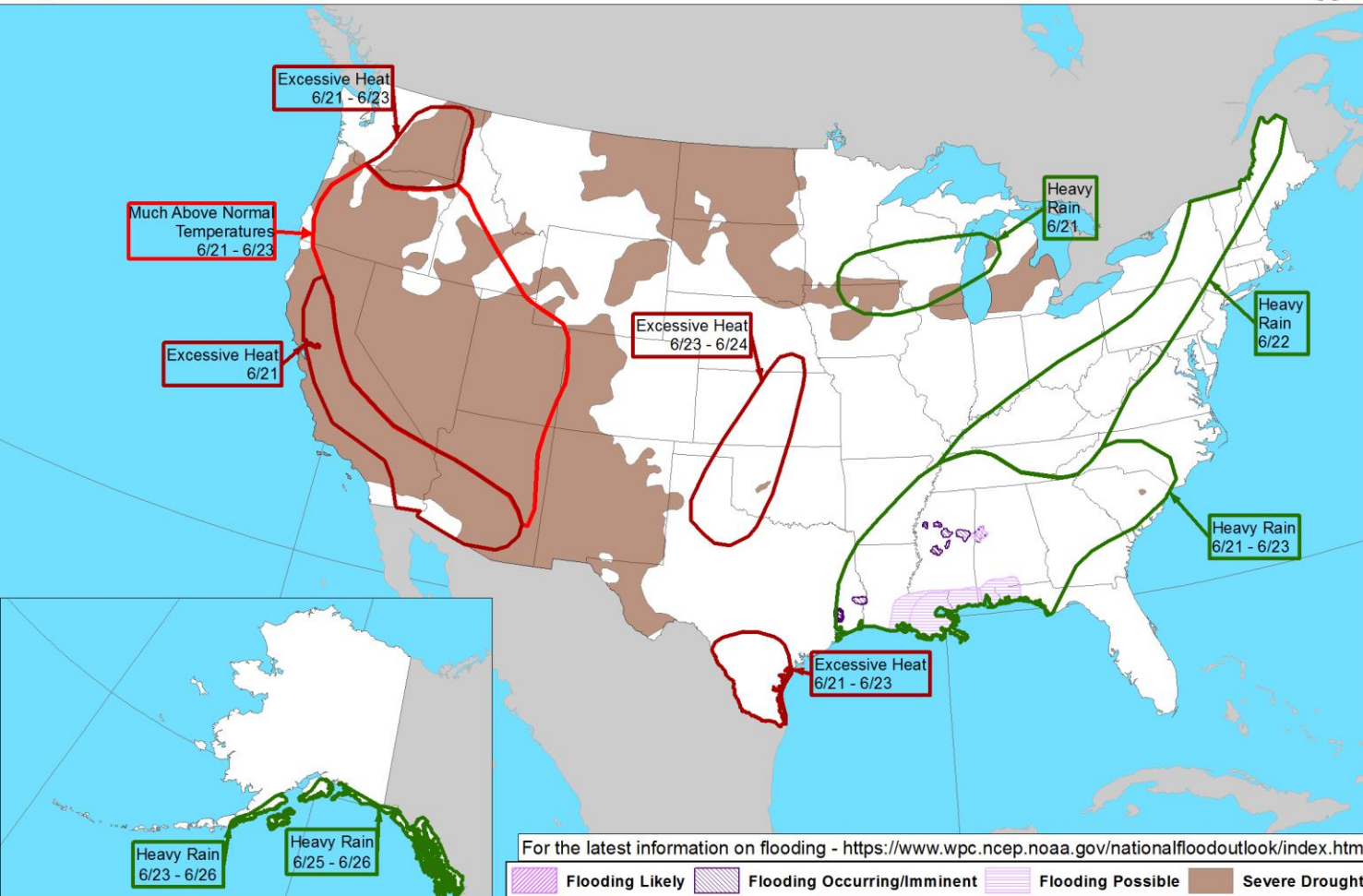


# Hazard Outlook

From the [Weather Prediction Center](#)



Day 3-7 U.S. Hazards Outlook  
Valid: 06/21/2021-06/25/2021



Locally heavy rainfall is still possible across the Panhandle heading into the first part of next week. This will exacerbate flooding concerns

Weather Prediction Center

Made: 06/18/2021 3PM EDT

Follow us: [f](#)

[www.wpc.ncep.noaa.gov](https://www.wpc.ncep.noaa.gov)



# Current & Forecast River Flooding

## Panhandle – Southeast River Forecast Center

### Rivers Currently in or Forecast to Reach Flood Stage:

- [Perdido River at Barrineau Park](#) – RISING
- [Escambia River near Century](#) – RISING
- [Big Coldwater Creek near Milton](#) – RISING
- [Blackwater River near Baker](#) – RISING
- [Shoal River near Crestview](#) - RISING

More details on river levels available at the [Southeast River Forecast Center website](#).





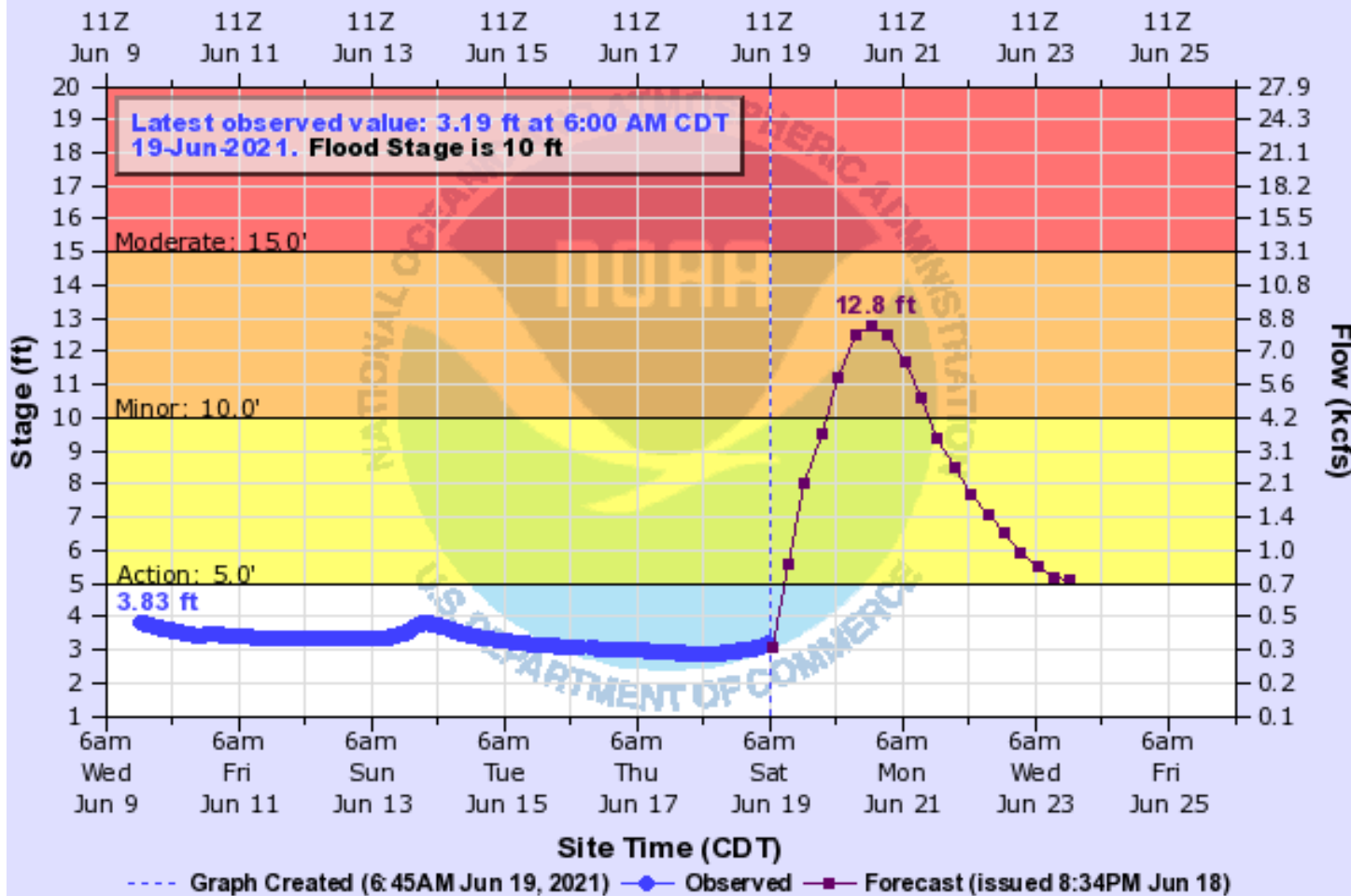


# Big Coldwater Creek near Milton

[Hydrograph Link](#)

## BIG COLDWATER CREEK NEAR MILTON

Universal Time (UTC)



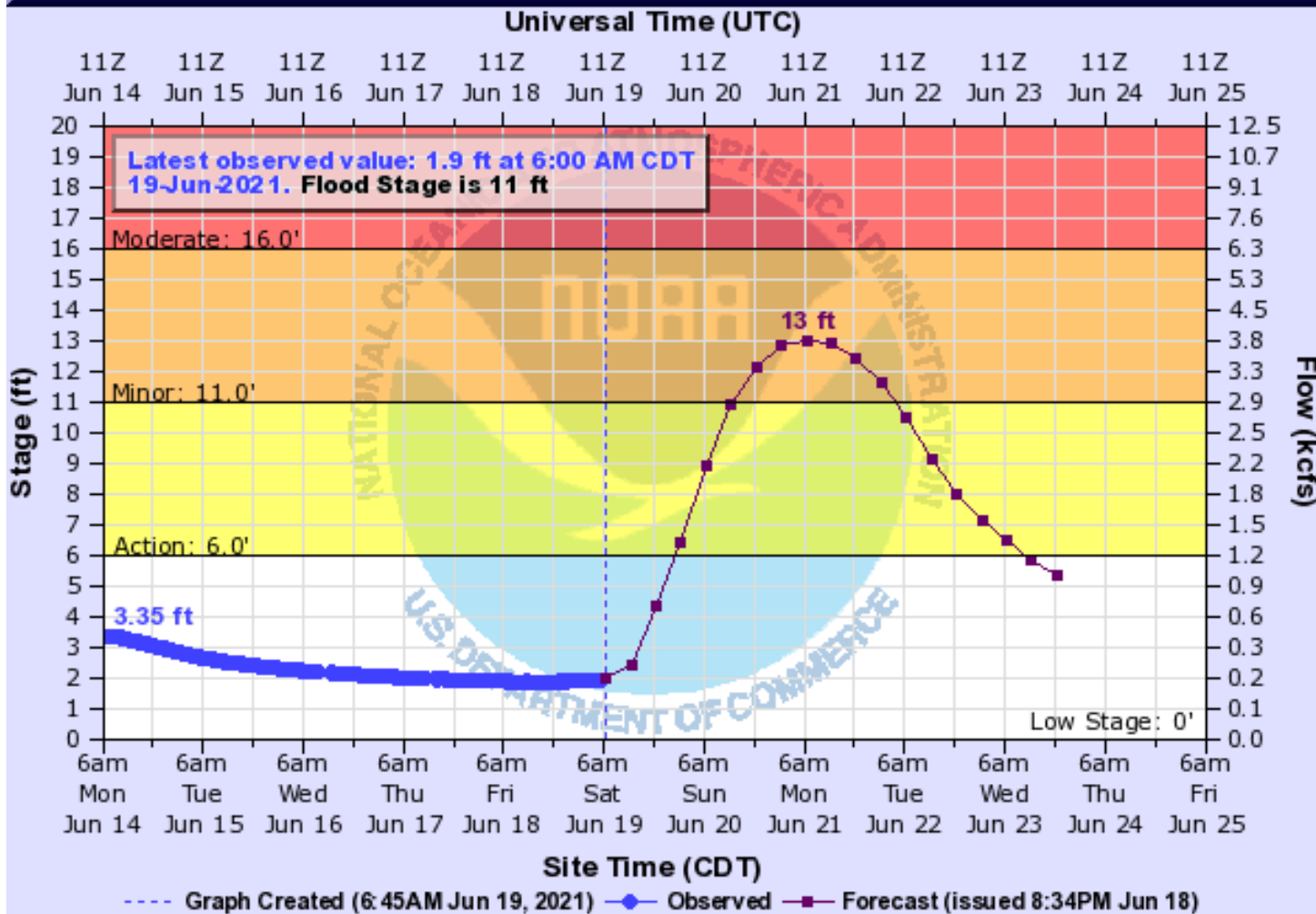
- 10 Flooding of lowlands and some fish camps will occur.



# Blackwater River near Baker

[Hydrograph Link](#)

## BLACKWATER RIVER (AL) NEAR BAKER



BAKF1(plotting HGIRG) "Gage 0" Datum: 60.5'

- 16 Some residential flooding occurs downstream from the Highway 4 bridge.
- 14.5 Flooding of Cotton Ridge Park in Baker begins.
- 11 Minor flooding of secondary roads and lowlands from the Highway 4 Bridge downstream.
- 9.5 Kennedy and Peaden Bridges are flooded upstream of Highway 4 bridge.

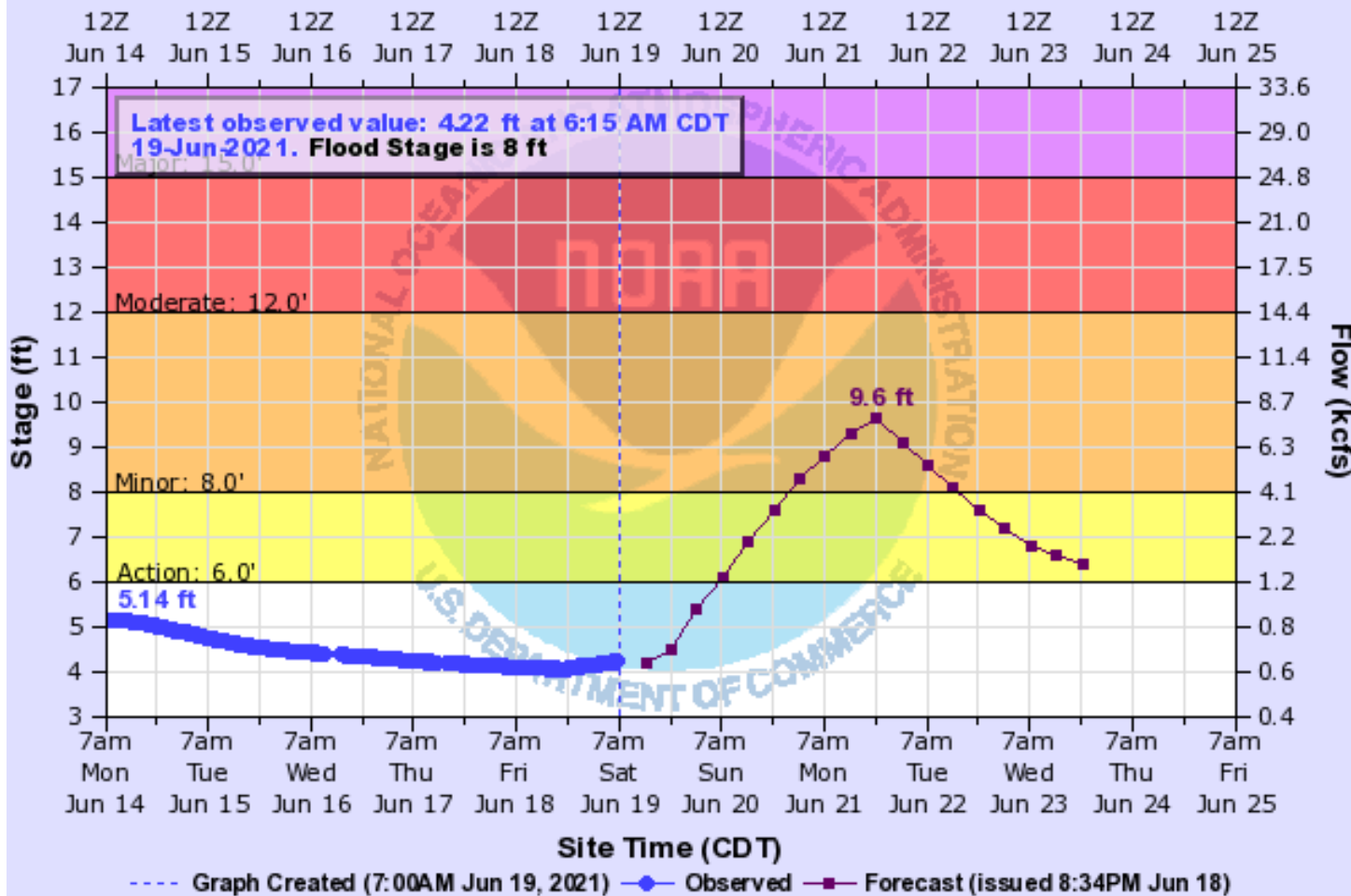


# Shoal River near Crestview

[Hydrograph Link](#)

## SHOAL RIVER NEAR CRESTVIEW

Universal Time (UTC)



CRVF1(plotting HGIRG) "Gage 0" Datum: 47.21'

Observations courtesy of US Geological Survey

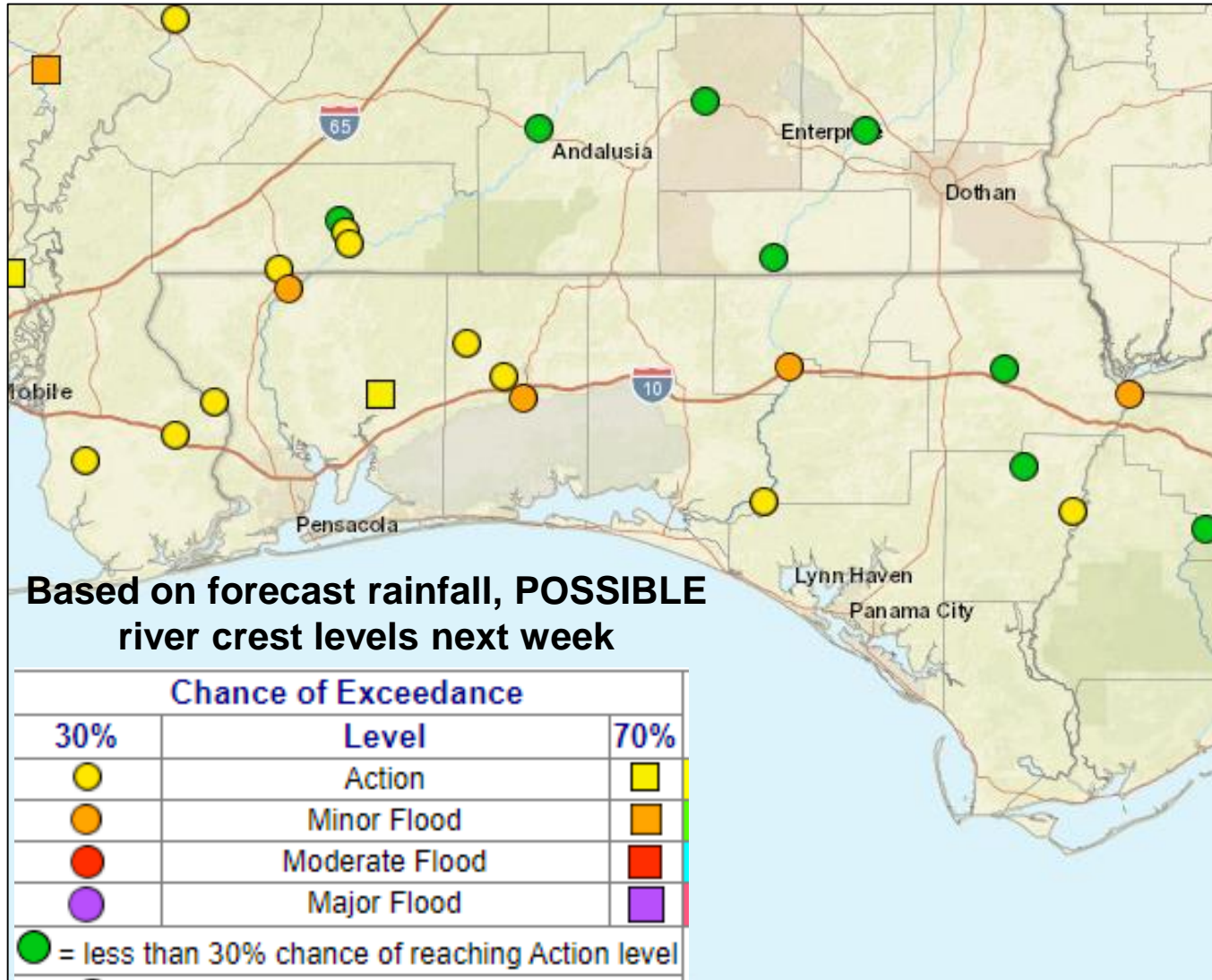
- 11 Flooding becomes a threat to the Trevor Court and Rattlesnake Bluff areas.
- 10 Some flooding of trailers north of the Okaloosa Correctional Institute. Water surrounds home on Sowel Road.
- 8.5 Water in yards on Sowel Road.
- 8 Minor flooding of low lying areas.





# Possible River Flooding

Chance of River Flooding Based on Range of Forecasted Rainfall



With the recent dry weather, rivers are running below normal. This will help mitigate any significant river flooding.

It will likely take over 5-7" of rain to result in minor river flooding in the Panhandle.



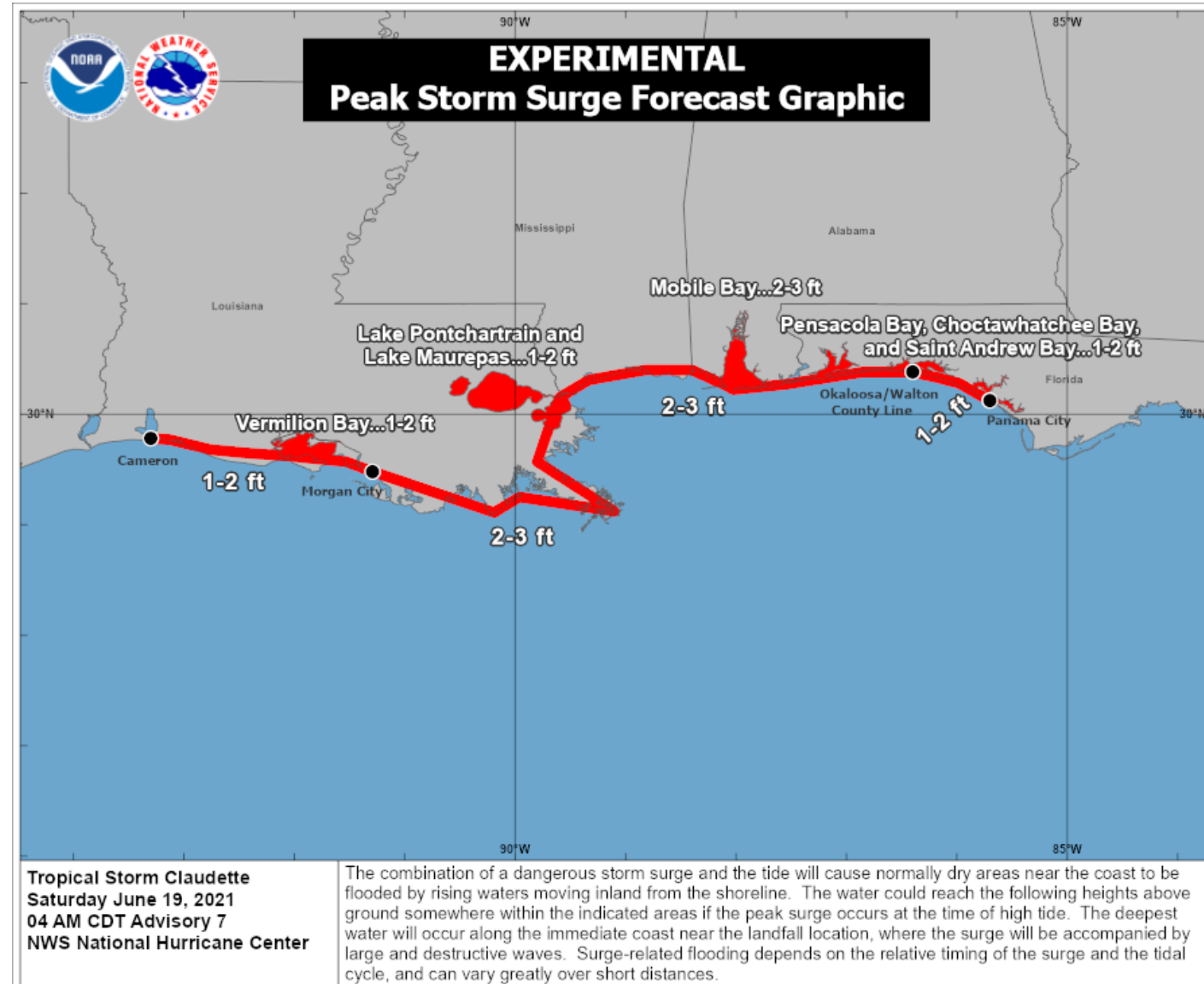
# Storm Surge/Coastal Flooding

## Tropical Storm Claudette

Storm surge of 2-3' is possible from the Alabama/Florida border to the Okaloosa/Walton County line.

1-2' of storm surge is possible from the Okaloosa/Walton County line to Panama City.

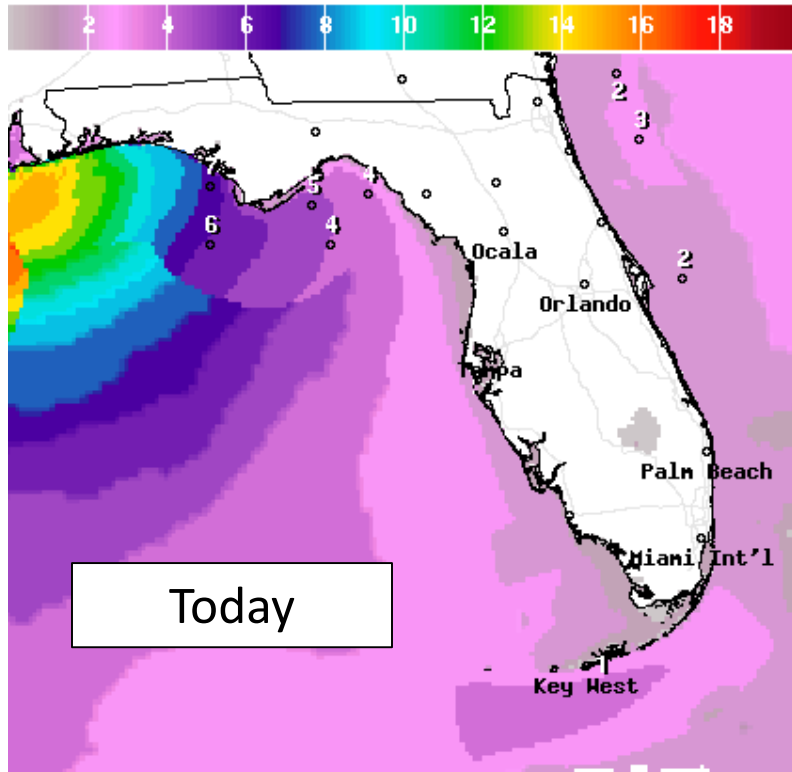
This will result in nuisance to minor coastal flooding, particularly in normally flood-prone areas.





# Forecast Wave Heights

## Saturday and Sunday

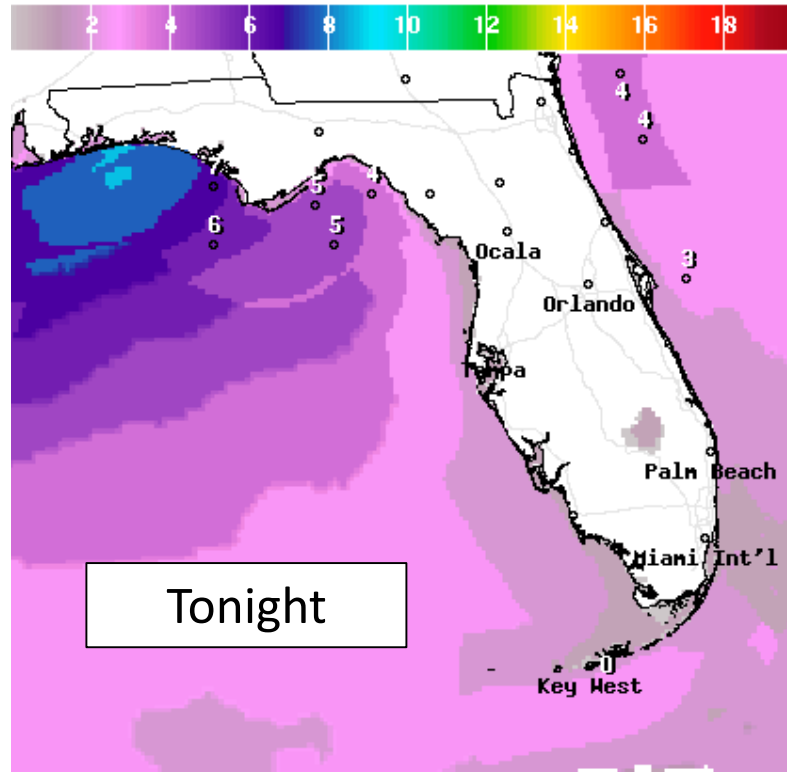


Wave Height(ft) Ending Sat Jun 19 2021 2PM EDT  
(Sat Jun 19 2021 18Z)



National Digital Forecast Database

11z issuance Graphic created-Jun 19 7:20AM EDT

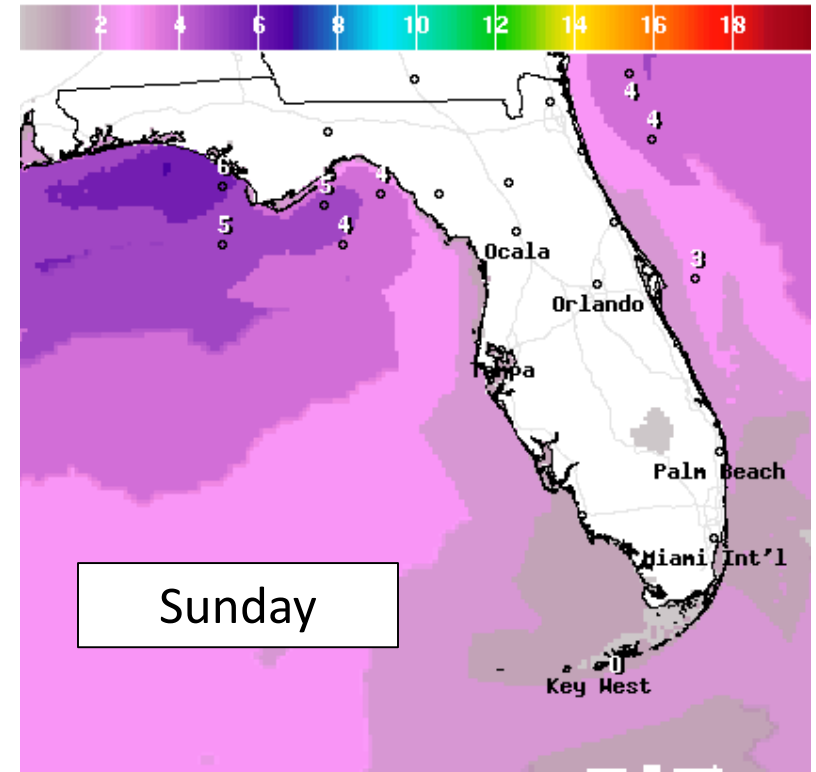


Wave Height(ft) Ending Sun Jun 20 2021 2AM EDT  
(Sun Jun 20 2021 06Z)



National Digital Forecast Database

11z issuance Graphic created-Jun 19 7:21AM EDT



Wave Height(ft) Ending Sun Jun 20 2021 2PM EDT  
(Sun Jun 20 2021 18Z)



National Digital Forecast Database

11z issuance Graphic created-Jun 19 7:21AM EDT



Surf will remain elevated through the weekend. High Surf Warnings and Advisories is in effect from Escambia to Gulf Counties. This could result in some beach erosion. Dangerous rip currents are likely along the Panhandle beaches.






# Severe Thunderstorm Risk Categories

## Understanding the Storm Prediction Center Risk Scale

### Understanding Severe Thunderstorm Risk Categories

| THUNDERSTORMS<br>(no label)  | 1 - MARGINAL<br>(MRGL)   | 2 - SLIGHT<br>(SLGT)   | 3 - ENHANCED<br>(ENH)  | 4 - MODERATE<br>(MDT)   | 5 - HIGH<br>(HIGH)   |
|--|--|--|--|---|--|
| No severe*<br>thunderstorms<br>expected  | Isolated severe<br>thunderstorms<br>possible                                       | Scattered<br>severe storms<br>possible   | Numerous<br>severe storms<br>possible  | Widespread<br>severe storms<br>likely   | Widespread<br>severe storms<br>expected  |
| Lightning/flooding<br>threats exist with <u>all</u><br>thunderstorms             | Limited in duration<br>and/or coverage<br>and/or intensity                         | Short-lived and/or<br>not widespread,<br>isolated intense<br>storms possible       | More persistent<br>and/or widespread,<br>a few intense                             | Long-lived,<br>widespread and<br>intense  | Long-lived, very<br>widespread and<br>particularly intense                           |
|  |  |  |  |  |  |

\* NWS defines a severe thunderstorm as measured wind gusts to at least 58 mph, and/or hail to at least one inch in diameter, and/or a tornado. All thunderstorm categories imply lightning and the potential for flooding. Categories are also tied to the probability of a severe weather event within 25 miles of your location.



National Weather Service

[www.spc.noaa.gov](http://www.spc.noaa.gov)



**Thunderstorms  
(no label)** No severe\* thunderstorms expected  
Lightning/flooding threat exists with all thunderstorms  
Winds to 40 mph and small hail possible



**1 Marginal Risk  
(MRGL)** *Isolated severe thunderstorms possible*  
Limited in duration and/or coverage and/or intensity  
Wind to 40-60 mph, hail up to 1", and low tornado risk



**2 Slight Risk  
(SLGT)** *Scattered severe storms possible*  
Short-lived and/or not widespread, isolated intense storms  
One or two tornadoes  
Reports of strong winds and wind damage  
Hail ~1", isolated 2"



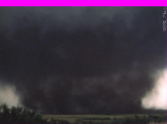
**3 Enhanced Risk  
(ENH)** *Numerous severe storms possible*  
More persistent and/or widespread, a few intense  
A few tornadoes  
Several wind damage reports  
Damaging hail, 1"-2"



**4 Moderate Risk  
(MDT)** *Widespread severe storms likely*  
Long-lived, widespread and intense  
Strong tornadoes  
Widespread wind damage  
Destructive hail, 2" or greater



**5 High Risk  
(HIGH)** *Widespread severe storms expected*  
Long-lived, very widespread and particularly intense  
Tornado outbreak  
Derecho



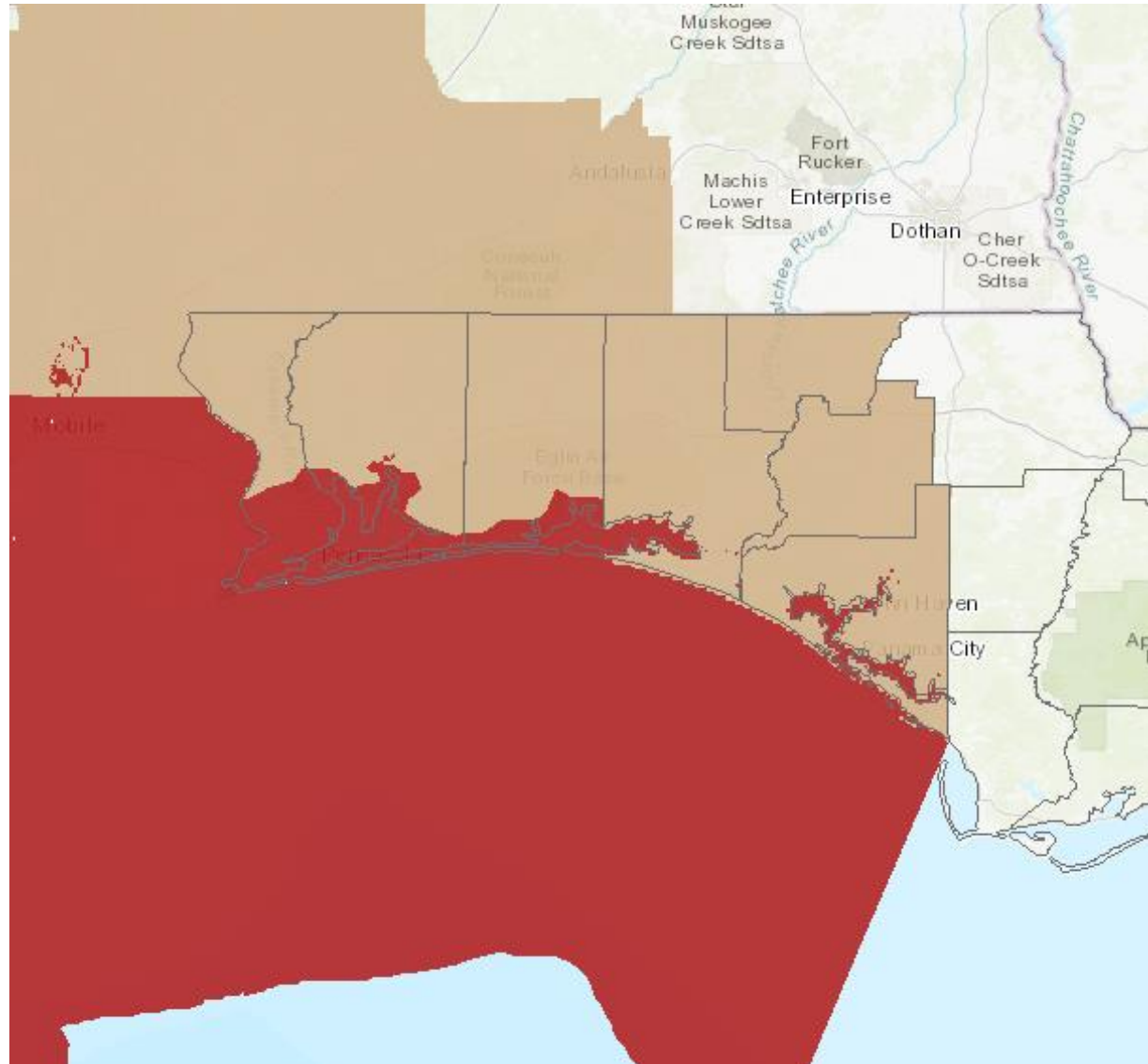


# Wind Watches and Warnings

In Effect Until Further Notice

**Tropical Storm Warnings** are in effect for coastal parts of Escambia, Santa Rosa, and Okaloosa Counties.

**Wind Advisories** are in effect for the inland parts of Escambia, Santa Rosa, Okaloosa Counties as well as Walton, Holmes, Washington, and Bay Counties until 1 AM CT Sunday





# Tropical Storm & Hurricanes

## Watches Versus Warnings

### ***WATCH***

Tropical storm and/or hurricane conditions are **POSSIBLE** in Watch area

Issued up to 48 hours in advance of tropical storm force winds

### ***WARNING***

Tropical storm and/or hurricane conditions are **EXPECTED** in Warning area

Issued up to 36 hours in advance of onset of tropical storm force winds

Hurricane preparedness activities become difficult once winds reach tropical storm force. **Watches & Warnings are issued in advance of onset of tropical storm force winds, 39-73mph**



NWSMobile



[weather.gov/mob](https://weather.gov/mob)





# Forecast Maximum Wind Gusts

## Saturday and Sunday



### Maximum Wind Gusts: Saturday

Created by FDEM State Meteorological Support Unit || Data from NWS, US Census Bureau, Natural Earth



Wind gusts of 35-45 mph are possible in the western Panhandle on Saturday, especially near the coast, but sustained tropical storm force winds appear unlikely. Higher wind gusts are possible in the outer bands and stronger storms.



# Overall Summary

## Florida Outlook:

### Tropical Storm Claudette

- Claudette is located about 30 miles north of New Orleans, LA, moving north-northeast at 12 mph.
- Maximum sustained winds are near 45 mph. Gradual weakening is forecast, and Claudette will become a tropical depression later today or tonight and become post-tropical by tomorrow. Claudette could restrengthen and regain tropical storm status off the Northeast US coast early next week.
- A northeastward motion across the southeastern United States will continue through this weekend.
- With this system being lopsided, most of the impacts will be on the eastern side, which is bringing heavy rainfall to the Panhandle even with a landfall in Louisiana.
- 5-8" of rain (locally 10-14"+) is expected in the Panhandle, with 2-4" of rain expected in the Big Bend by Monday.
- Flash Flood Watches are in effect for the entire Florida Panhandle west of the Apalachicola River. Flash flooding will become likely if bands of heavy rainfall affect the same locations. There is a Moderate Risk of flash flooding (level 3 of 4) for the Panhandle. Significant flash flooding is possible.
- A low-end tornado threat is possible in the Panhandle, and the Storm Prediction Center has outlined these areas in a Marginal to Slight Risk of isolated tornadoes (level 1-2 of 5). The tornado threat could also extend into Sunday near the FL/GA line.
- Storm surge may produce tides of 1-3 feet above normal in the Panhandle. High Surf Advisories and Warnings are in effect for the beaches from Escambia through Gulf County. Dangerous rip currents and high surf are expected along Gulf Coast beaches by the end of the week and through the weekend.

The next briefing packet will be issued this afternoon. For the latest information on the tropics, please visit the National Hurricane Center website at [www.hurricanes.gov](http://www.hurricanes.gov).



# TROPICAL UPDATE



Created by:

Cameron Young, Assistant State Meteorologist

[Cameron.Young@em.myflorida.com](mailto:Cameron.Young@em.myflorida.com)

State Meteorological Support Unit

Florida Division of Emergency Management

Users wishing to subscribe (approval pending) to this distribution list, register at:

[https://public.govdelivery.com/accounts/FLDEM/subscriber/new?topic\\_id=SERT\\_Met\\_Tropics](https://public.govdelivery.com/accounts/FLDEM/subscriber/new?topic_id=SERT_Met_Tropics).

Other reports available for subscription are available at:

<https://public.govdelivery.com/accounts/FLDEM/subscriber/new?preferences=true>