



# TROPICAL UPDATE



5:00 PM EDT

Friday, June 18, 2021

Potential Tropical Cyclone Three

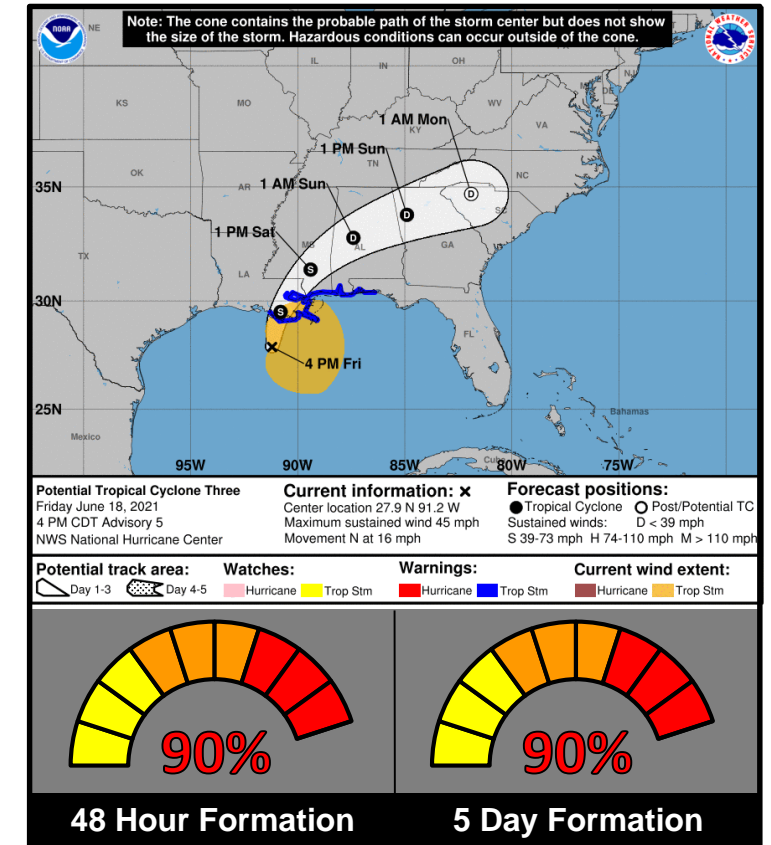
This update is intended for government and emergency response officials, and is provided for informational and situational awareness purposes only. Forecast conditions are subject to change based on a variety of environmental factors. For additional information, or for any life safety concerns with an active weather event please contact your County Emergency Management or Public Safety Office, local National Weather Service forecast office, or visit the National Hurricane Center website at [www.hurricanes.gov](http://www.hurricanes.gov).



# Potential Tropical Cyclone Three

5 PM ET Friday: Florida Threats & Changes Since Last Packet

	MINIMAL	LOW	MODERATE	HIGH	EXTREME
WINDS					
STORM SURGE					
FLASH FLOODING					
TORNADOES					
RIP CURRENTS					



## Overview/Recent Changes:

Tropical Storm Warnings are in effect for the western Panhandle coast from Escambia to Okaloosa Counties. Flash Flood Watches are in effect west of the Apalachicola River. PTC #3 is likely to become Claudette before landfall in Louisiana tonight. Rain bands may begin tonight, with most arriving on Saturday. 1-3' of storm surge is possible in the Panhandle, beginning tonight into Saturday. Wind gusts of 35-45 mph are possible in the Panhandle.



# Current Florida Radar

As of 4:00 PM ET

The rain shield associated with PTC #3 is looming just offshore of the Panhandle coast. Bands of rain, heavy at times, are expected through the overnight into Saturday. Gusty winds and isolated tornadoes are possible.

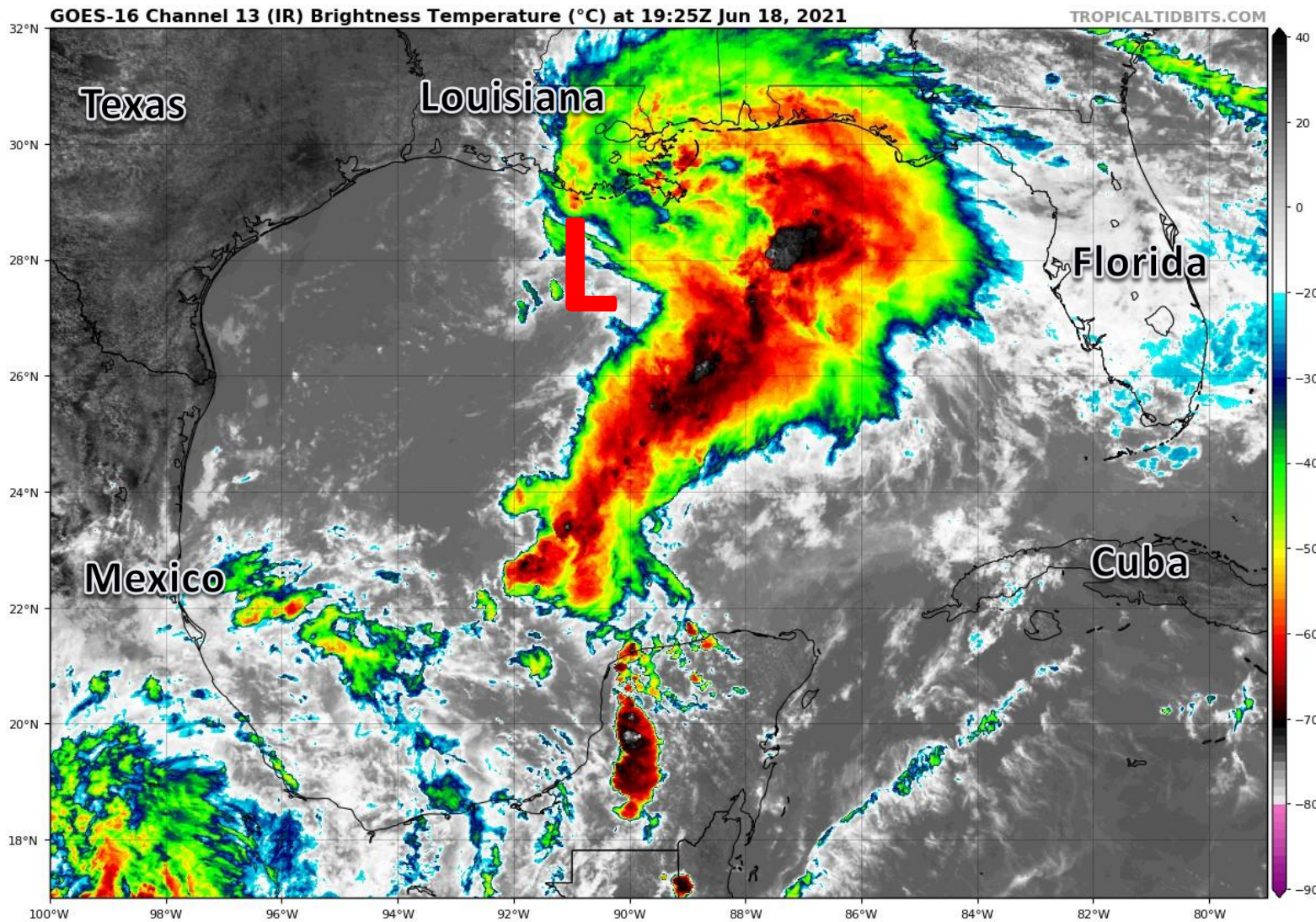




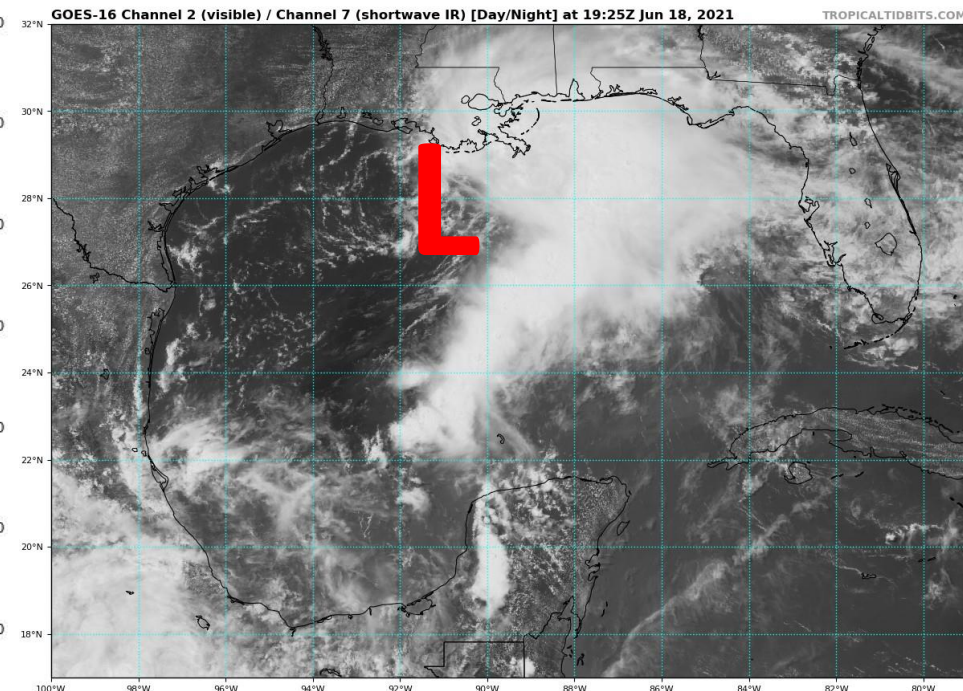


# Satellite Imagery

## Gulf of Mexico – Potential Tropical Cyclone Three



PTC #3 is still very east-weighted with all of the storms to the east and south of the circulation. As PTC #3 moves over the southeast US, it will drag the storms across the Panhandle.

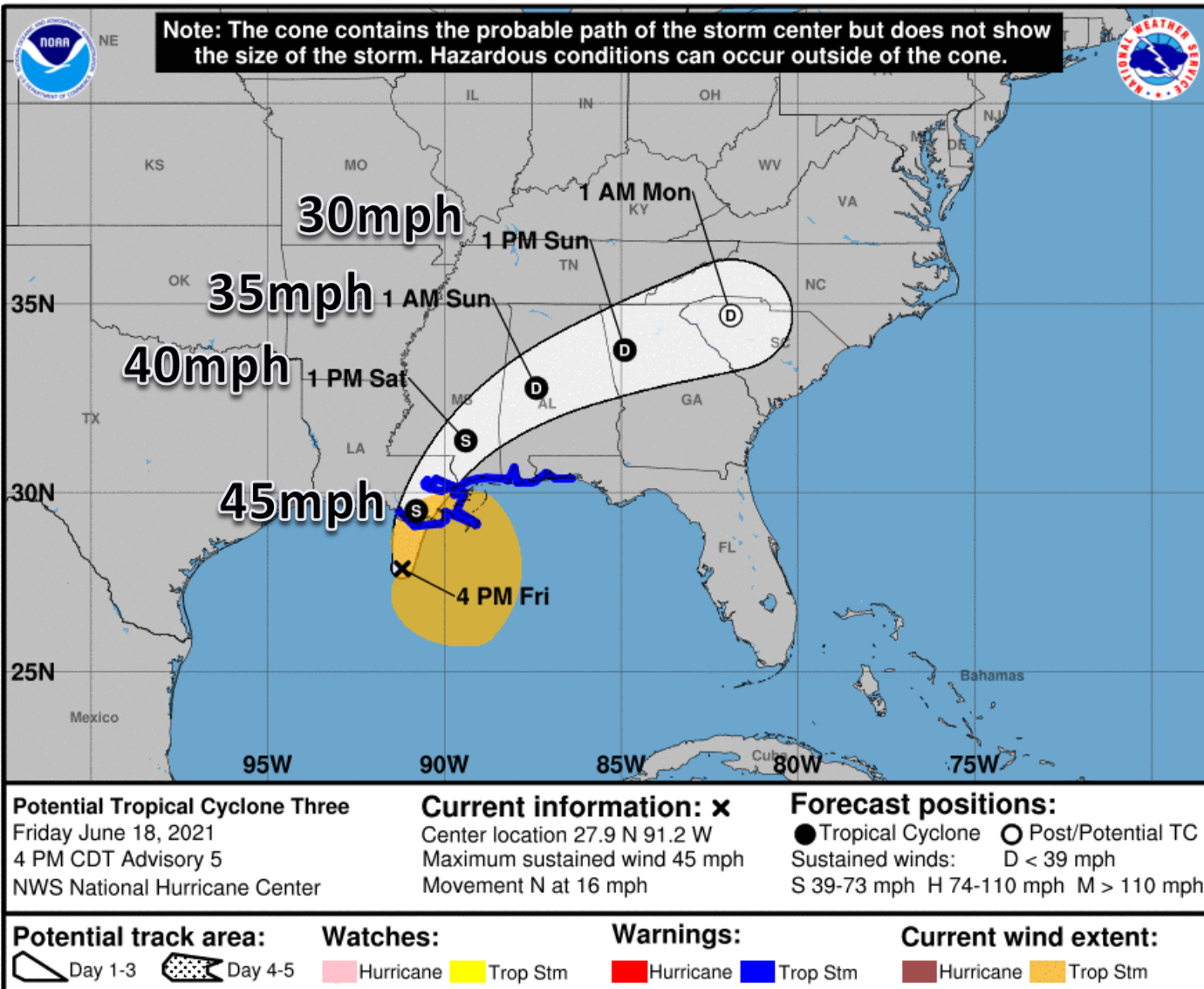






# Official Forecast Track – PTC #3

From the National Hurricane Center – ([LINK](#))



- PTC #3 is located about 125 miles south of Morgan City, LA, or about 285 miles southwest of Pensacola, FL.
- PTC #3 is moving to the north at 16 mph. This general motion is expected today through landfall.
- PTC #3 will then turn northeastward over the Southeast US.
- Maximum sustained winds are near 45 mph, and little change in strength is expected.
- The next name on the list is Claudette.

**\*\*\*DO NOT FOCUS ON WHERE THE CENTER GOES\*\*\***  
***Impacts will extend well to the east of the center of the storm, including the Florida Panhandle. Flash flooding, dangerous rip currents, and isolated tornadoes will all be possible.***



# Key Messages

From the National Hurricane Center



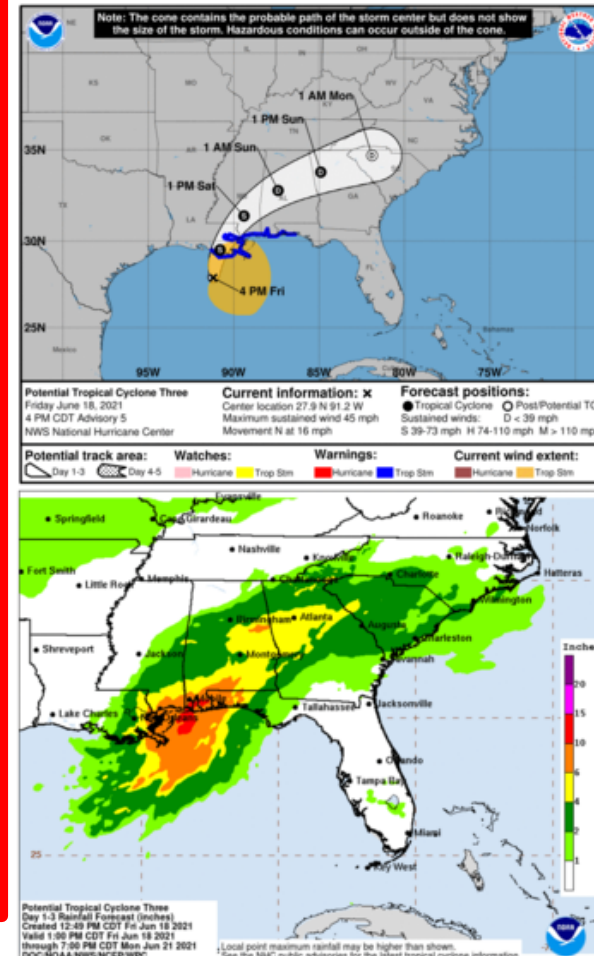
## Key Messages for Potential Tropical Cyclone Three

Advisory 5: 4:00 PM CDT Fri Jun 18, 2021



1. The system is expected to produce heavy rainfall and considerable flash, urban and small stream flooding tonight and through the weekend along the Central Gulf coast. Flood impacts will spread northeastward into the Southern Appalachians.

2. Tropical storm conditions have begun along portions of the central Gulf Coast from east of Morgan City, Louisiana, to the Okaloosa/Walton County line, Florida, including New Orleans. These winds will spread inland and continue into Saturday.

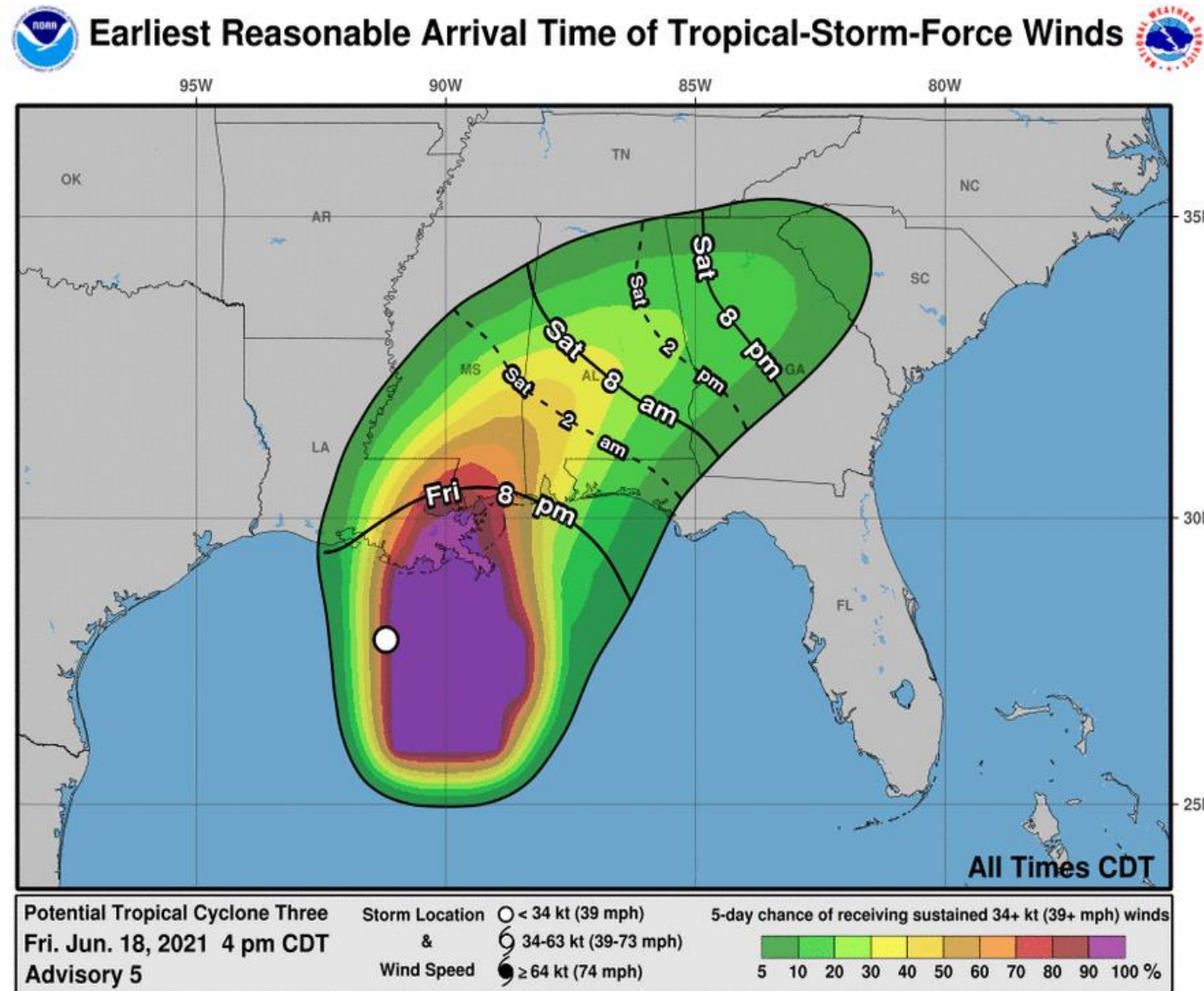


For more information go to [hurricanes.gov](https://hurricanes.gov)



# Time of Arrival & Wind Speed Probabilities

**EARLIEST REASONABLE** Time of Arrival of Tropical Storm Force Winds (>39 mph)



**Pensacola: 25% (+15)**

**Milton: 24% (+14)**

**Destin 13% (+7)**

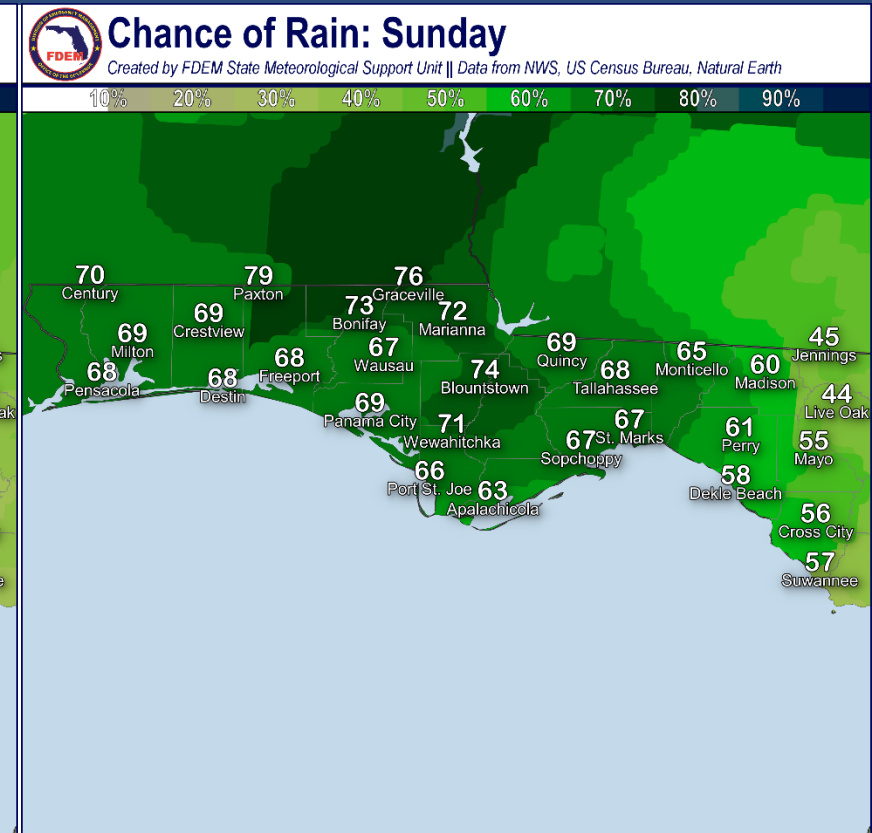
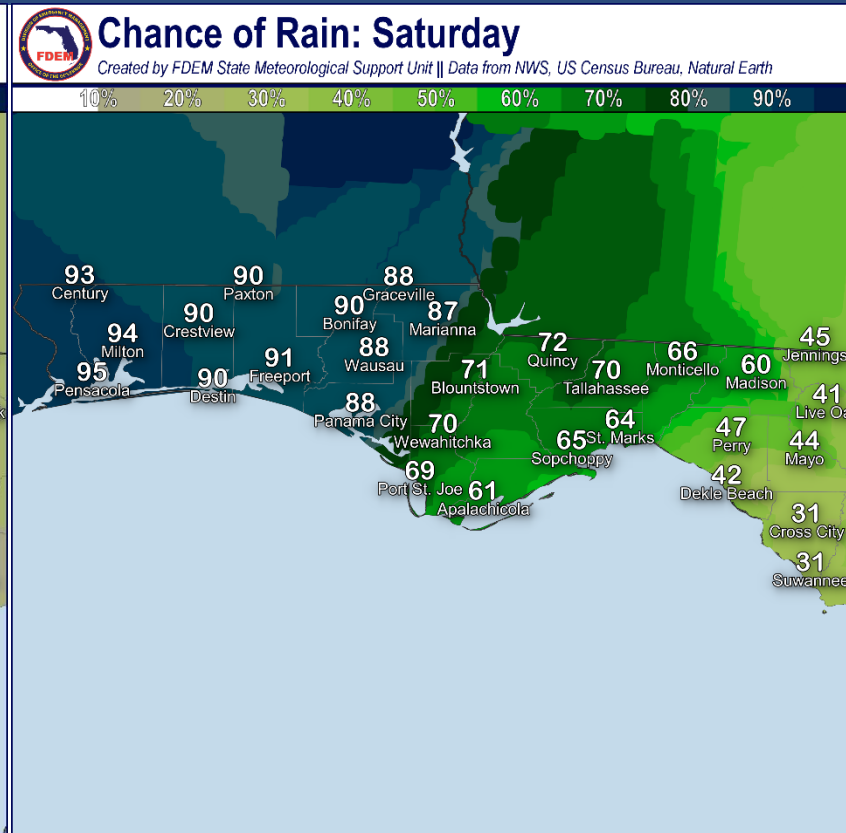
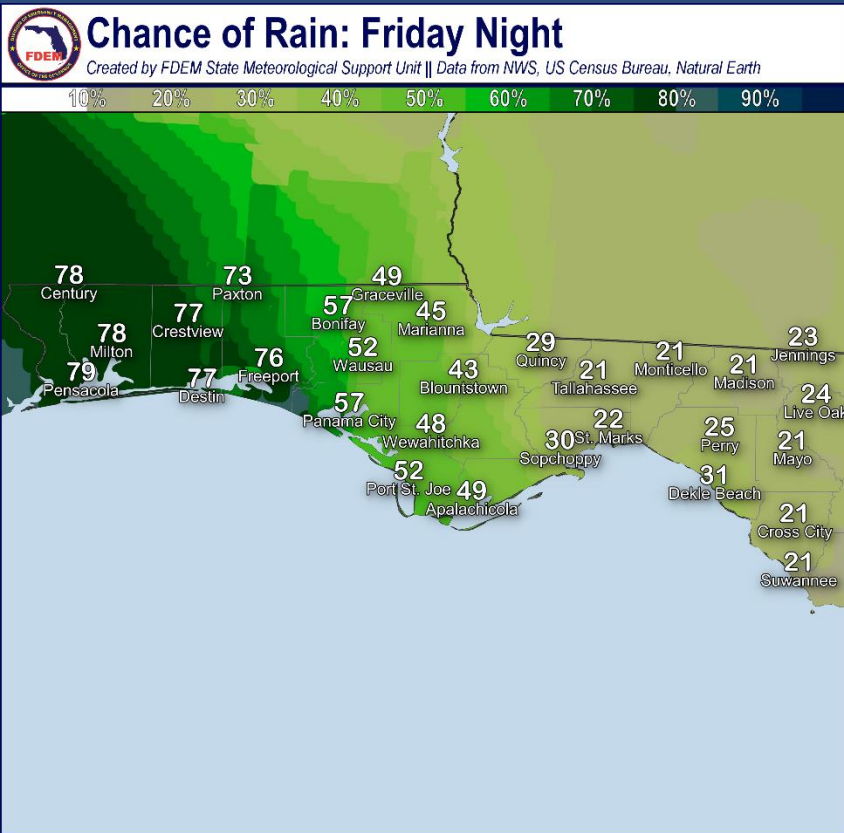
IF tropical storm force winds were to occur in the western Panhandle, the could begin as early as late tonight, but would most likely begin Saturday morning.





# Forecast Rain Chances

## Friday through Sunday – PTC #3



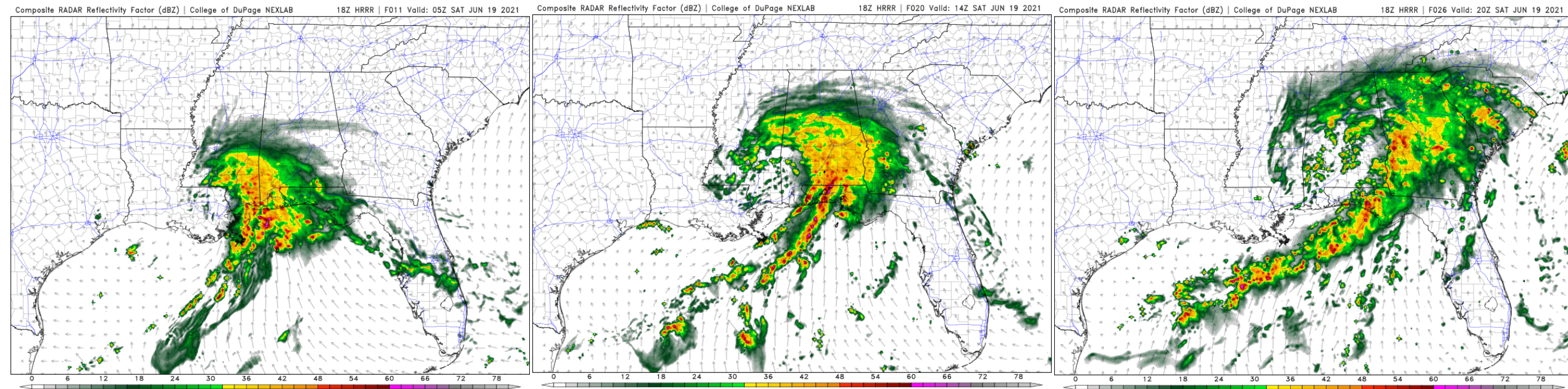
Some outer bands may begin approaching the Panhandle later this afternoon, followed by rounds of heavy rainfall tonight and especially on Saturday. The bands will also be capable of producing gusty winds and isolated tornadoes.





# Model Forecast Radar

**\*\*\*Only Model Guidance – Time & Position Will Vary\*\*\***



Tonight

Saturday Morning

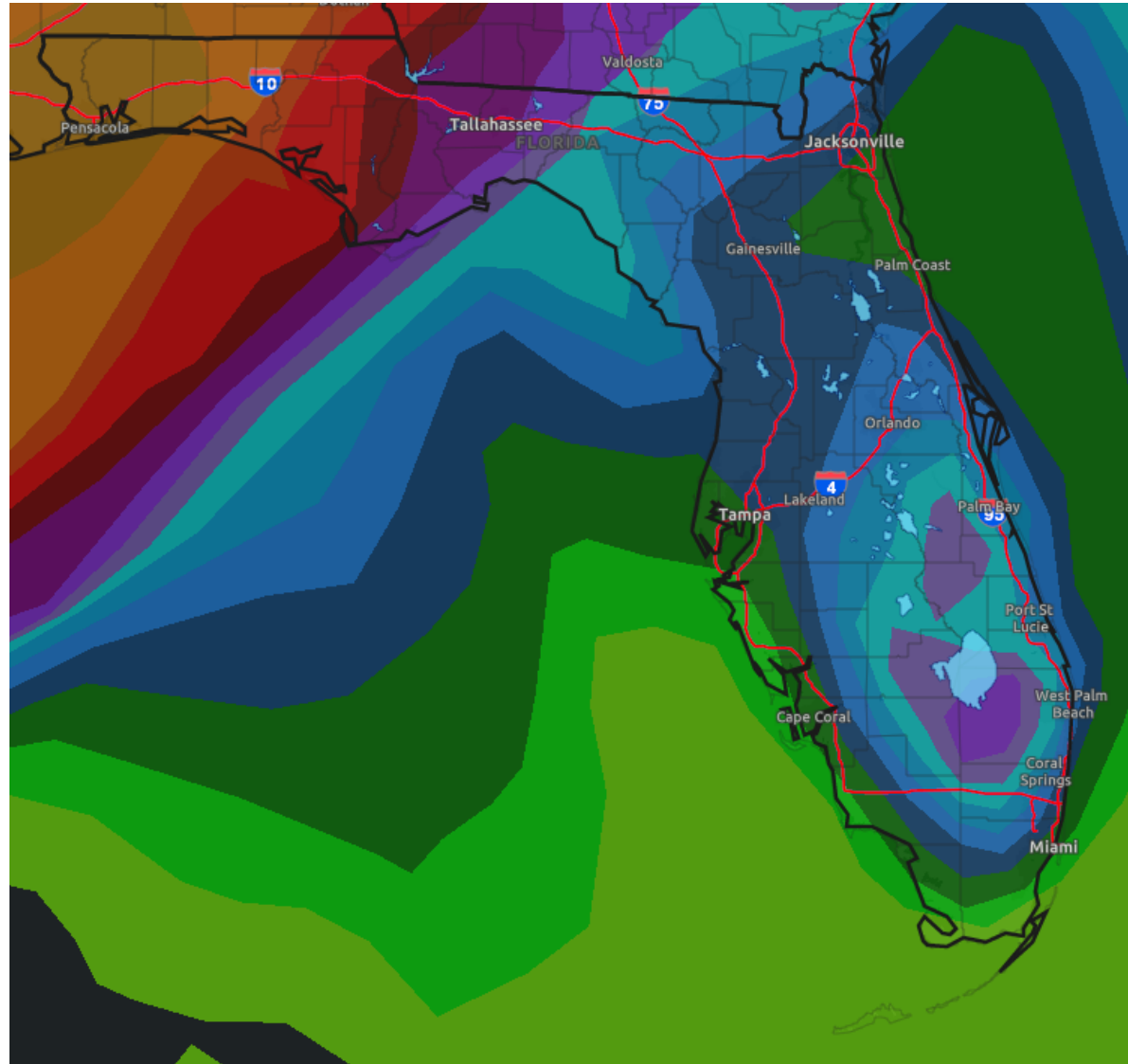
Saturday Afternoon

Rain bands will begin moving into the Panhandle late this afternoon or this evening. Additional bands will move through overnight, but Saturday will be the primary day for rain across most of the Panhandle.



# Rainfall Totals Next 7 Days

Ending 8 AM ET Friday



A widespread 5-10" of rain is currently forecast across the Panhandle over the next 7 days, possibly up to 10-14" in western areas. Localized higher amounts are possible. Rainfall totals of 2-4" are possible across the Big Bend.

**These rainfall totals are highly dependent on the track and organization of the system, both of which are still uncertain.**

The rainfall across the Peninsula is associated with thunderstorms over the next few days and is not related to the tropical system.



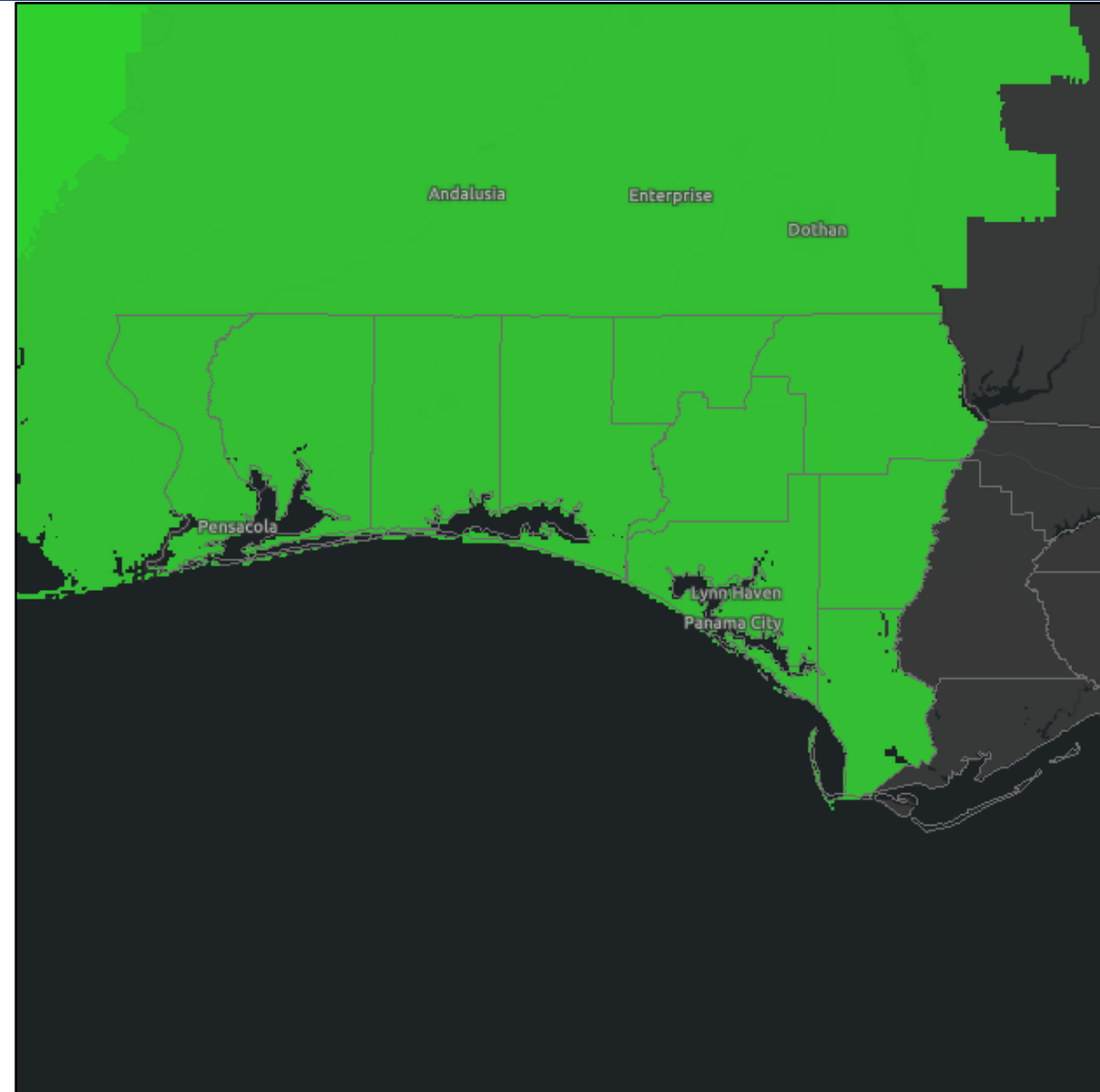
# Flood Watches

Links: [NWS Mobile](#) | [NWS Tallahassee](#)

The Flash Flood Watch for Escambia, Santa Rosa and Okaloosa Counties ends 6 AM CT on Sunday.

The Flash Flood Watch for Walton, Holmes, Washington, Bay, Jackson, Calhoun, and Gulf at 1 AM CT tonight until 7 PM CT on Sunday.

Widespread rainfall totals of 5-10 inches are expected with localized totals of 10-14 inches or more possible.

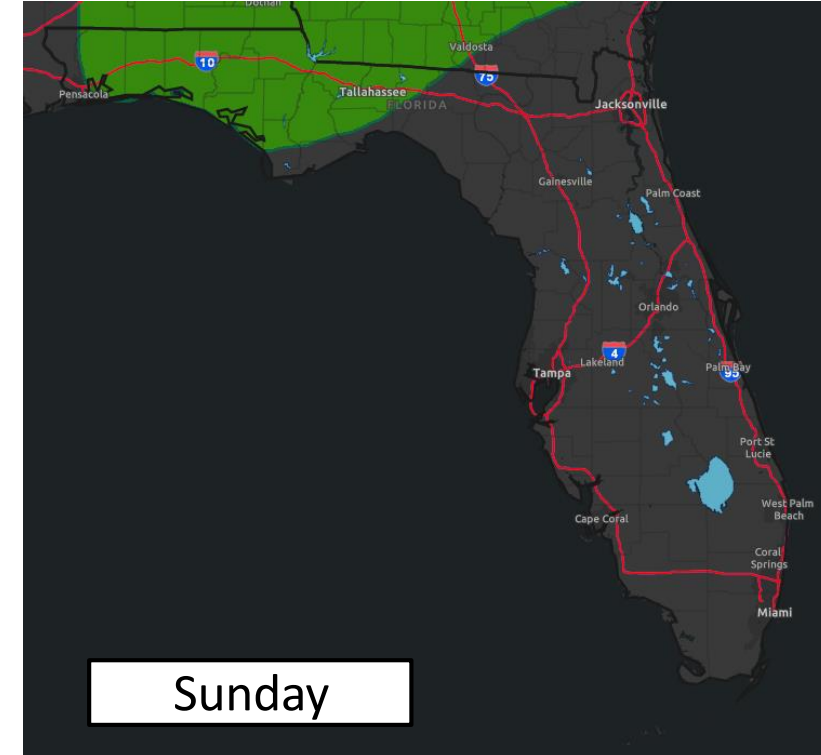
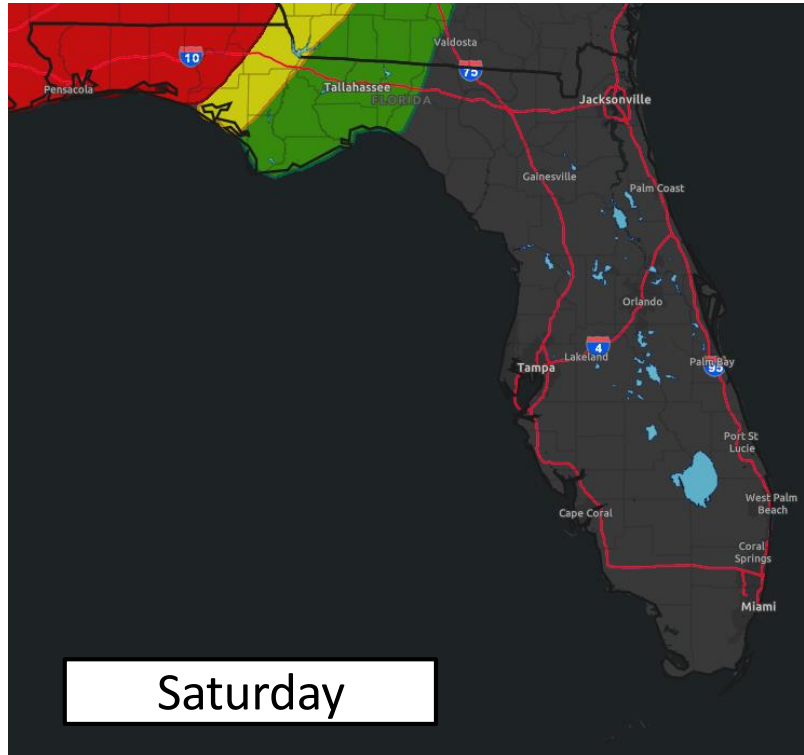
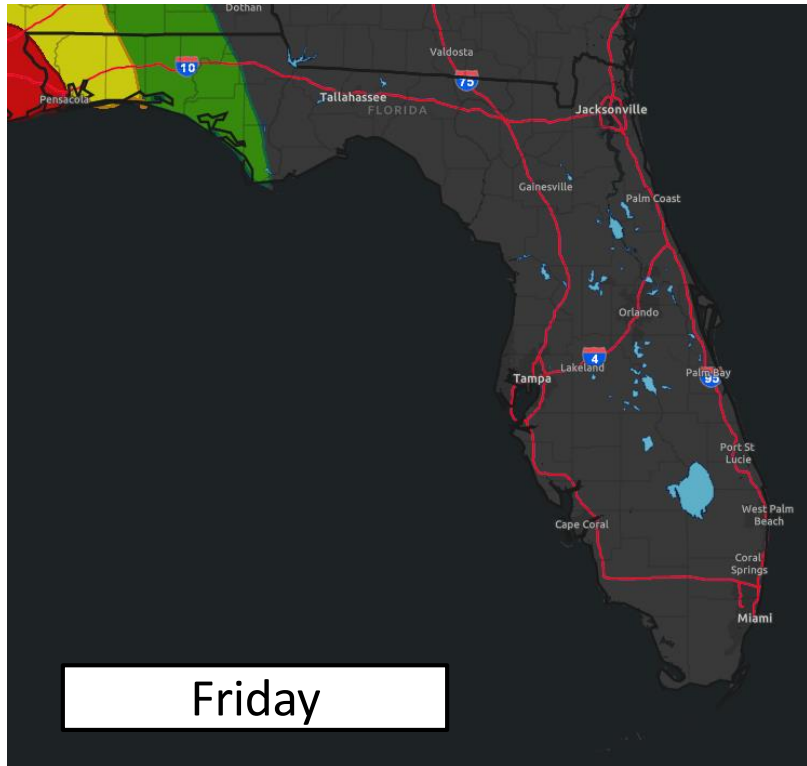






# Flash Flood Outlooks

From the Weather Prediction Center



Risk of rainfall exceeding flash flood guidance within 25 miles of a point to the right of a line

**HIGH: > 50%**

**SLGT: 10%-20%**

**MDT: 20%-50%**

**MRGL: 5%-10%**



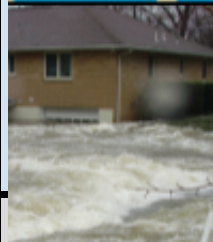
Bands of heavy rain from PTC #3 are likely to impact the Panhandle beginning later today into Saturday. Should a heavy rain band begin training over the Panhandle, flash flooding would then become likely.



# Flash Flood Risk Categories

## Understanding the Weather Prediction Center Risk Scale

### Understanding WPC Excessive Rainfall Risk Categories

<div>No Area/Label</div> <div>Flash floods are generally not expected.</div> <div><a href="http://www.wpc.ncep.noaa.gov">www.wpc.ncep.noaa.gov</a> @NWSWPC</div>	<div>MARGINAL (MRGL)</div> <div>Isolated flash floods possible</div> <div>Localized and primarily affecting places that can experience rapid runoff with heavy rainfall.</div>	<div>SLIGHT (SLGT)</div> <div>Scattered flash floods possible</div> <div>Mainly localized. Most vulnerable are urban areas, roads, small streams and washes. Isolated significant flash floods possible.</div>	<div>MODERATE (MDT)</div> <div>Numerous flash floods likely</div> <div>Numerous flash flooding events with significant events possible. Many streams may flood, potentially affecting larger rivers.</div>	<div>HIGH (HIGH)</div> <div>Widespread flash floods expected</div> <div>Severe, widespread flash flooding. Areas that don't normally experience flash flooding, could. Lives and property in greater danger.</div>	
<div>Flash flooding near me?</div> <div>Flash Flooding</div> <div>NO Flash Flooding</div>					
<div> WEATHER PREDICTION CENTER</div>		<div>Risk of rainfall exceeding flash flood guidance within 25 miles of a point to the right of a line</div> <div>HIGH: &gt; 50%SLGT: 10%-20%</div> <div>MDT: 20%-50%MRGL: 5%-10%</div>			



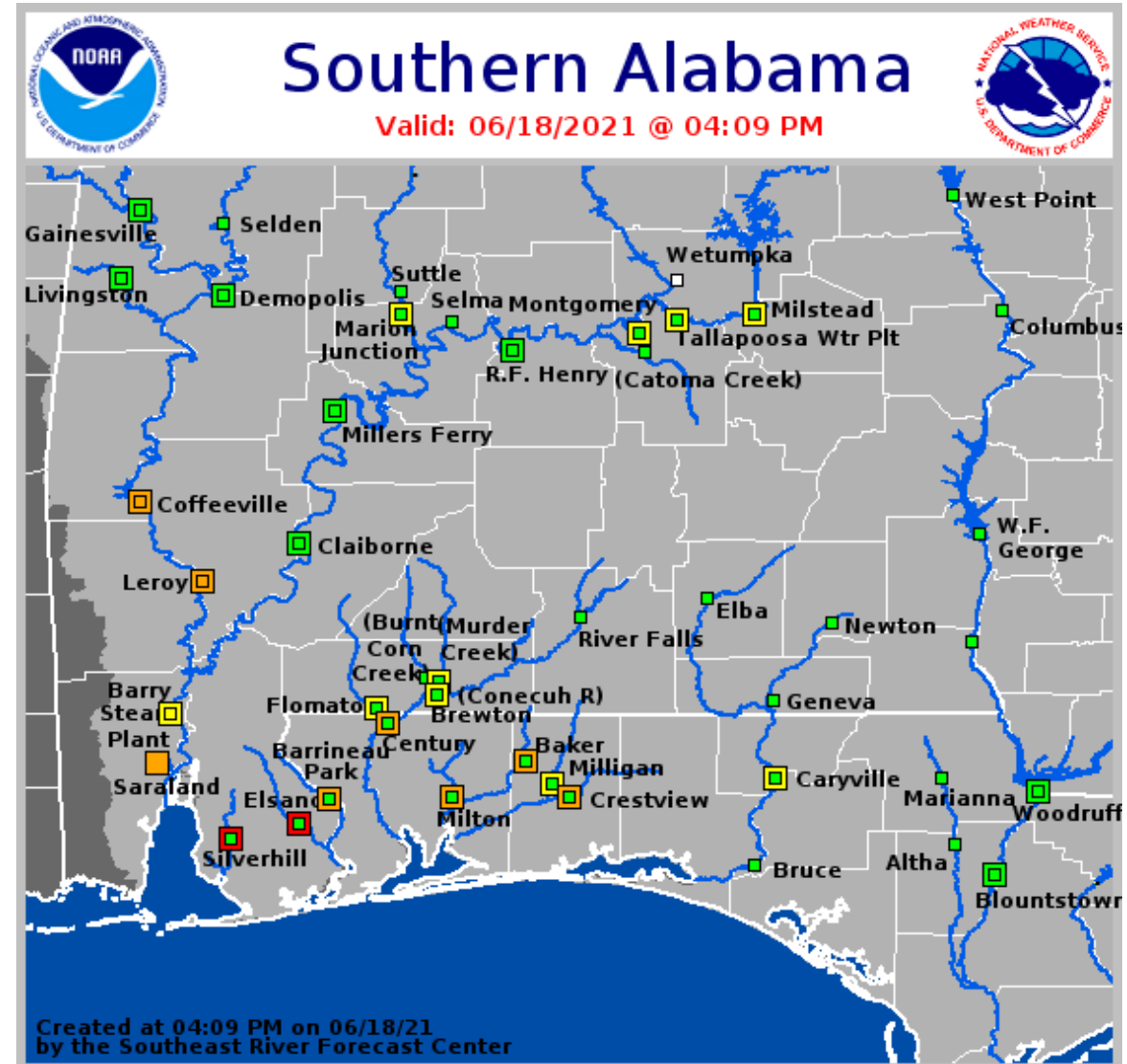
# Current & Forecast River Flooding

## Panhandle – Southeast River Forecast Center

### Rivers Currently in or Forecast to Reach Flood Stage:

- [Perdido River at Barrineau Park](#) – RISING
- [Escambia River near Century](#) – RISING
- [Big Coldwater Creek near Milton](#) – RISING
- [Blackwater River near Baker](#) – RISING
- [Shoal River near Crestview](#) - RISING

More details on river levels available at the [Southeast River Forecast Center website](#).

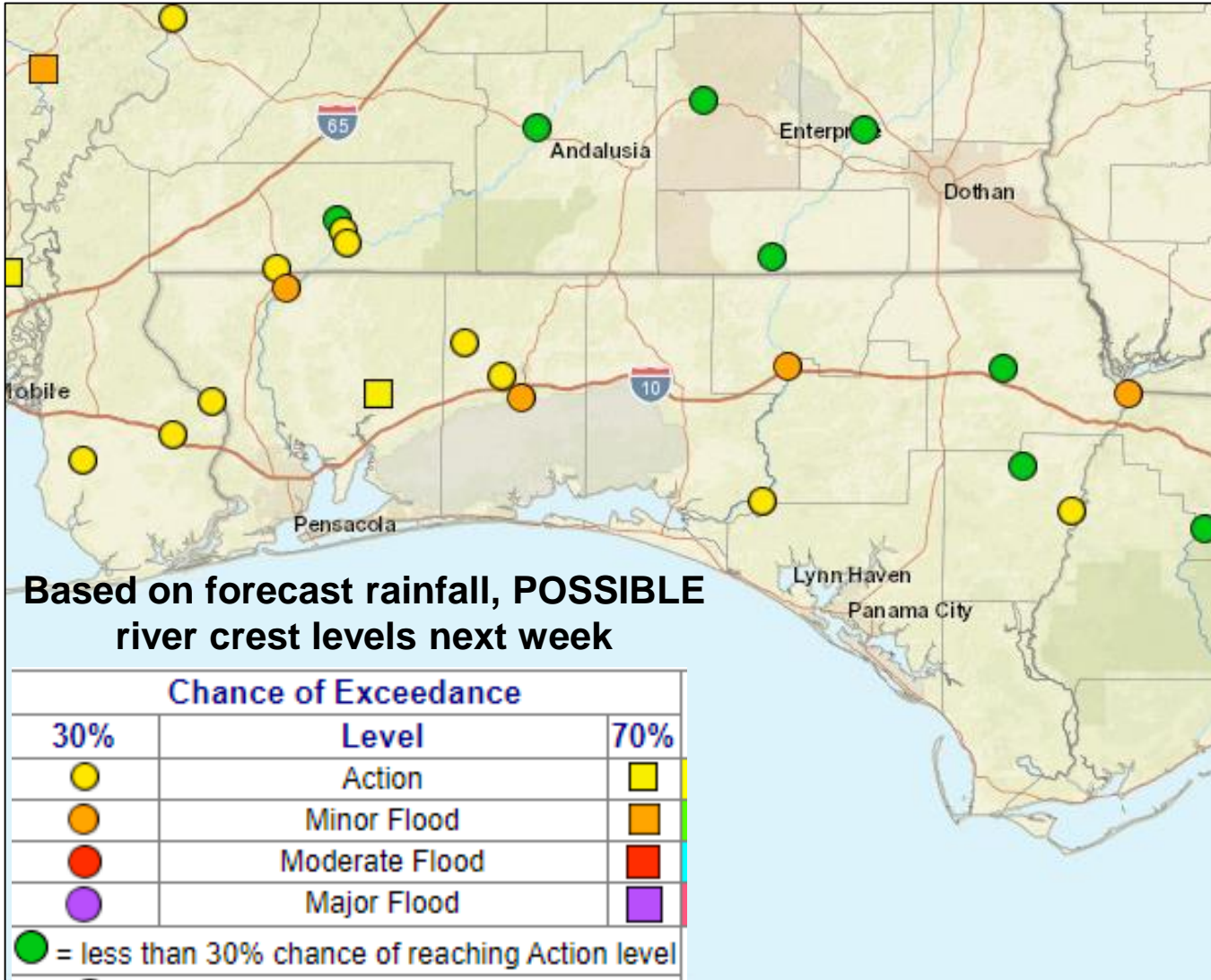






# Possible River Flooding

Chance of River Flooding Based on Range of Forecasted Rainfall



With the recent dry weather, rivers are running below normal. This will help mitigate any significant river flooding.

It will likely take over 5-7" of rain to result in minor river flooding in the Panhandle.



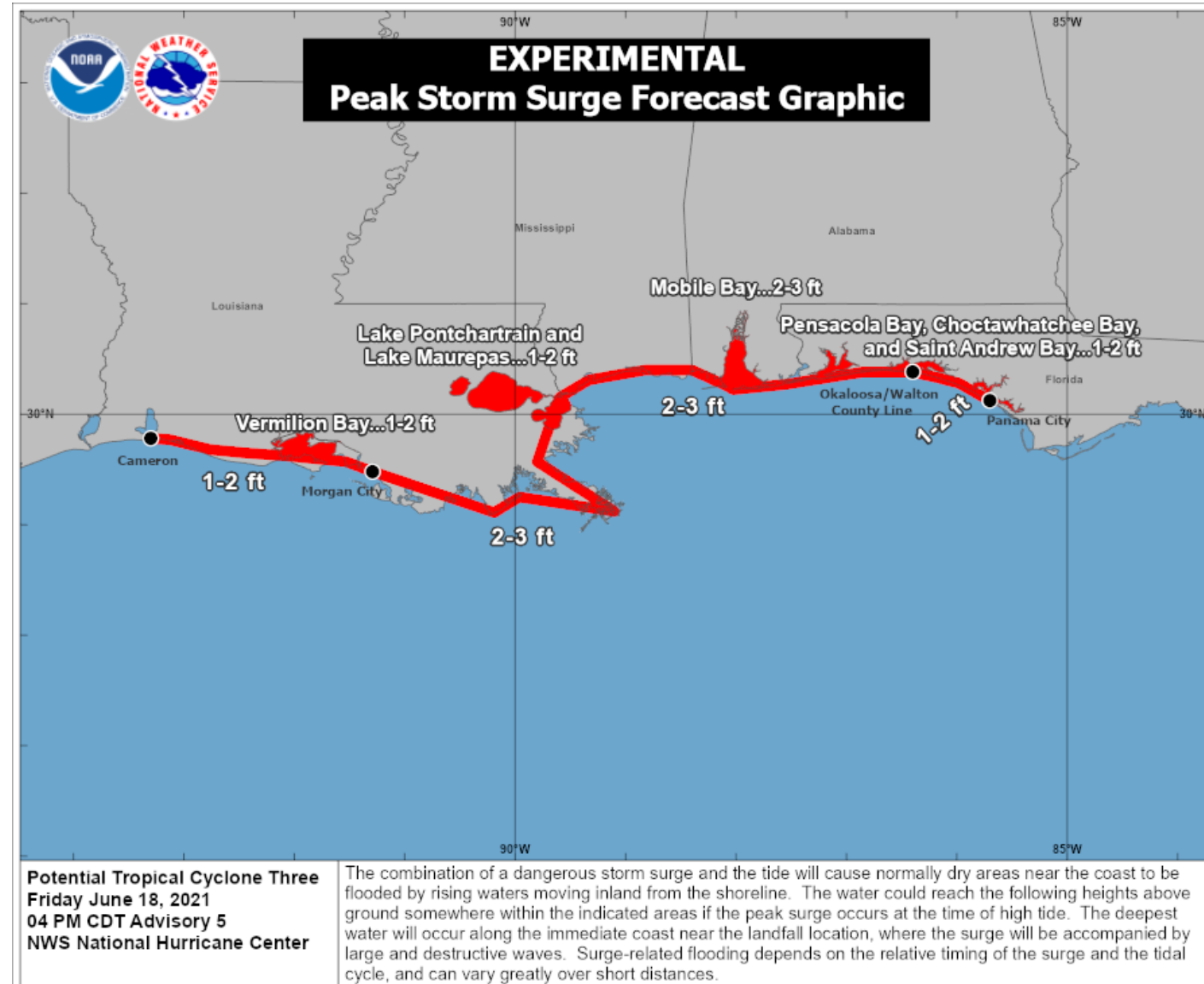
# Storm Surge/Coastal Flooding

## This Weekend

Storm surge of 2-3' is possible from the Alabama/Florida border to the Okaloosa/Walton County line.

1-2' of storm surge is possible from the Okaloosa/Walton County line to Panama City.

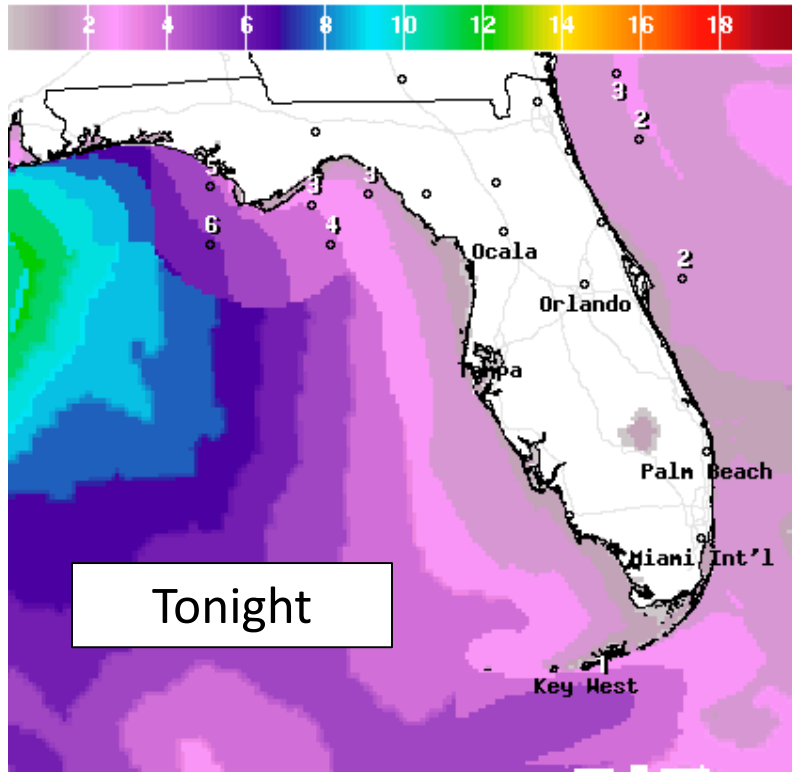
This will result in nuisance to minor coastal flooding, particularly in normally flood-prone areas.





# Forecast Wave Heights

## Tonight through Sunday



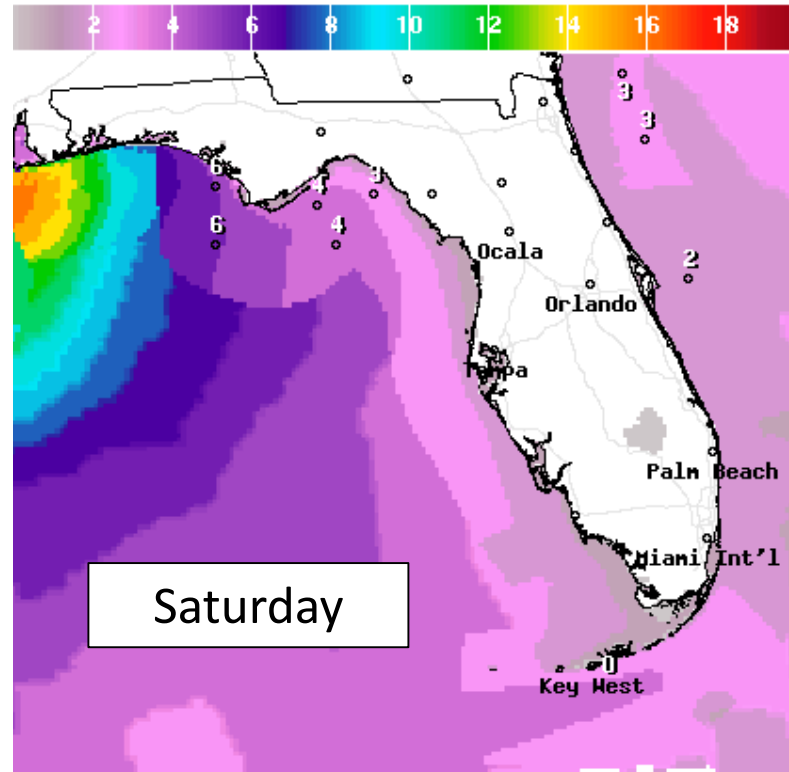
Wave Height(ft) Ending Sat Jun 19 2021 2AM EDT  
(Sat Jun 19 2021 06Z)



National Digital Forecast Database

19z issuance

Graphic created-Jun 18 3:26PM EDT



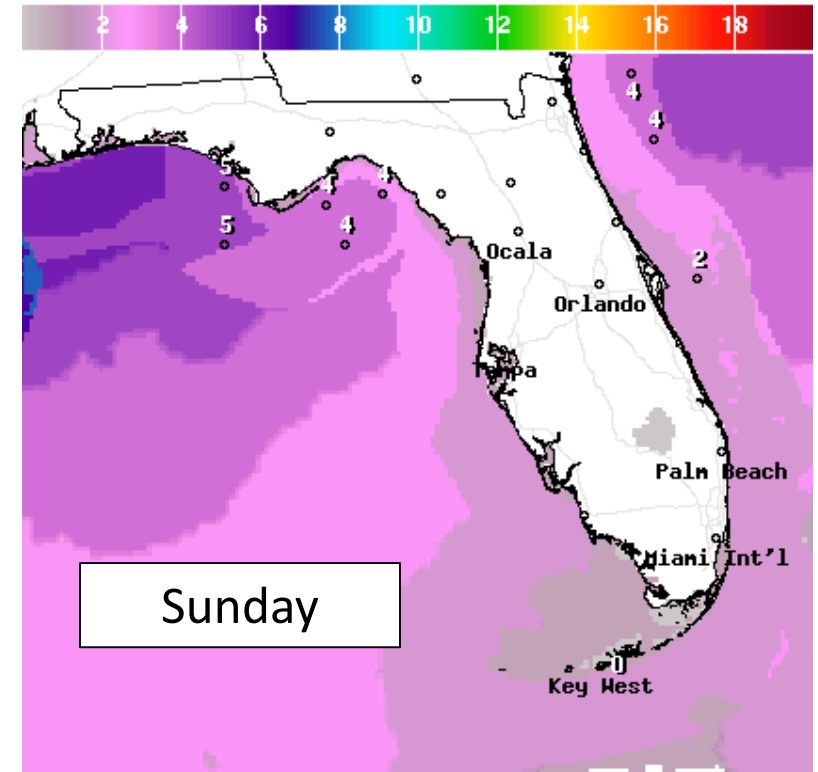
Wave Height(ft) Ending Sat Jun 19 2021 2PM EDT  
(Sat Jun 19 2021 18Z)



National Digital Forecast Database

19z issuance

Graphic created-Jun 18 3:27PM EDT



Wave Height(ft) Ending Sun Jun 20 2021 2PM EDT  
(Sun Jun 20 2021 18Z)



National Digital Forecast Database

19z issuance

Graphic created-Jun 18 3:27PM EDT



Surf will begin to build along the Panhandle beaches late Thursday into Friday and remain elevated through the weekend. High Surf Warnings and Advisories is in effect from Escambia to Gulf Counties. This could result in some beach erosion. Dangerous rip currents are likely along the Panhandle beaches.





# Severe Weather Outlook Saturday

From the Storm Prediction Center

## 5 - High

Widespread severe storms expected

## 4 - Moderate

Widespread severe storms likely

## 3 - Enhanced

Numerous severe storms possible

## 2 - Slight

Scattered severe storms possible

## 1 - Marginal

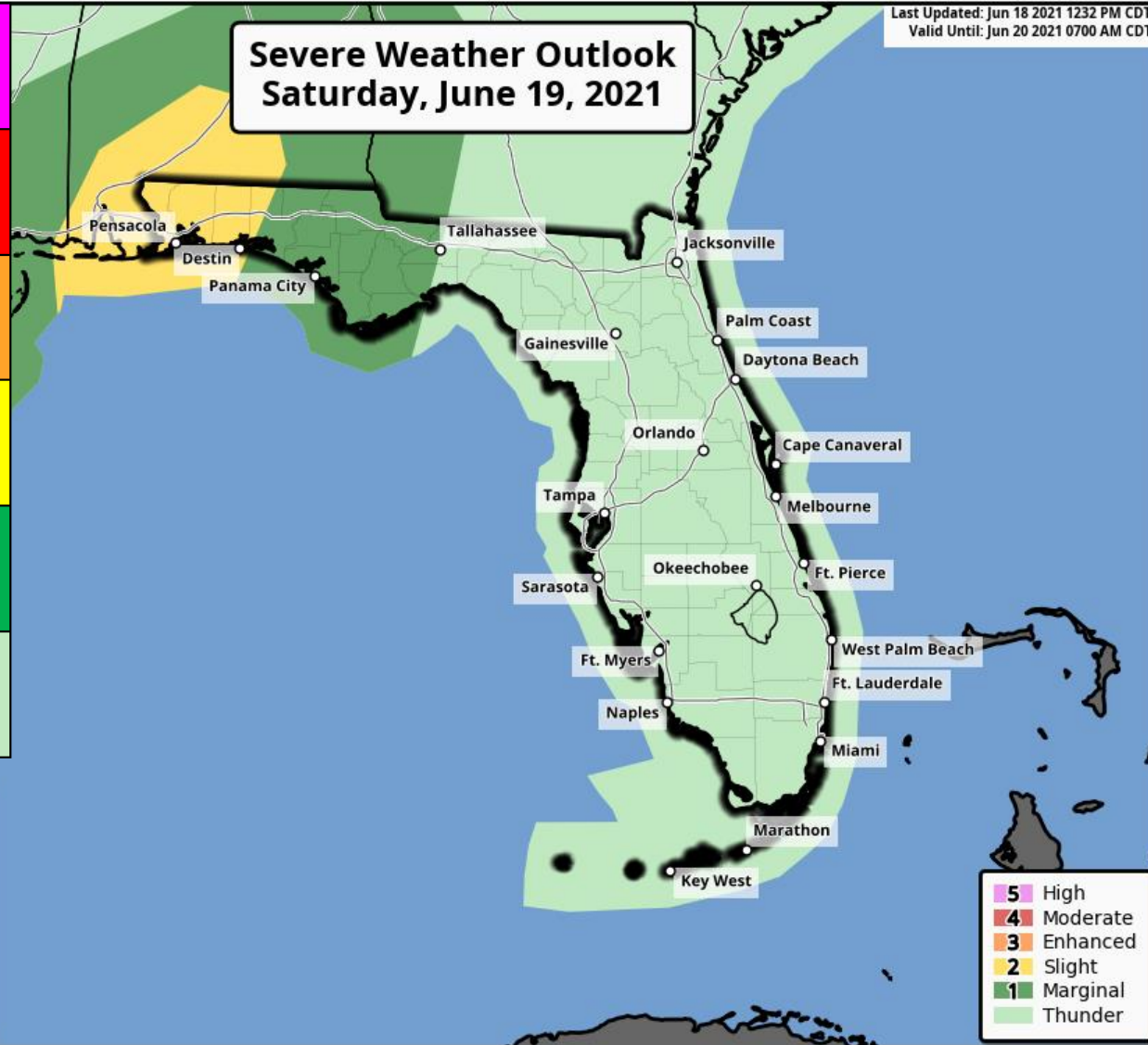
Isolated severe storms possible

## Thunderstorms

No severe storms expected

## Severe Weather Outlook Saturday, June 19, 2021

Last Updated: Jun 18 2021 1232 PM CDT  
Valid Until: Jun 20 2021 0700 AM CDT



As the outer bands of PTC #3 move onshore on Saturday, there will be a low-end tornado threat.

The Storm Prediction Center has outlined areas from Tallahassee westward in a Marginal to Slight Risk for severe weather (level 1 of 5).

It is possible that some areas could see an upgrade to a Slight Risk this afternoon.



National Weather Service  
Storm Prediction Center


<http://www.spc.noaa.gov>



# Severe Thunderstorm Risk Categories

## Understanding the Storm Prediction Center Risk Scale

### Understanding Severe Thunderstorm Risk Categories

THUNDERSTORMS (no label)	1 - MARGINAL (MRGL)	2 - SLIGHT (SLGT)	3 - ENHANCED (ENH)	4 - MODERATE (MDT)	5 - HIGH (HIGH)
No severe* thunderstorms expected	Isolated severe thunderstorms possible	Scattered severe storms possible	Numerous severe storms possible	Widespread severe storms likely	Widespread severe storms expected
Lightning/flooding threats exist with <u>all</u> thunderstorms	Limited in duration and/or coverage and/or intensity	Short-lived and/or not widespread, isolated intense storms possible	More persistent and/or widespread, a few intense	Long-lived, widespread and intense	Long-lived, very widespread and particularly intense
					

\* NWS defines a severe thunderstorm as measured wind gusts to at least 58 mph, and/or hail to at least one inch in diameter, and/or a tornado. All thunderstorm categories imply lightning and the potential for flooding. Categories are also tied to the probability of a severe weather event within 25 miles of your location.



National Weather Service

[www.spc.noaa.gov](http://www.spc.noaa.gov)



**Thunderstorms  
(no label)** No severe\* thunderstorms expected  
Lightning/flooding threat exists with all thunderstorms  
Winds to 40 mph and small hail possible



**1 Marginal Risk  
(MRGL)** *Isolated severe thunderstorms possible*  
Limited in duration and/or coverage and/or intensity  
Wind to 40-60 mph, hail up to 1", and low tornado risk



**2 Slight Risk  
(SLGT)** *Scattered severe storms possible*  
Short-lived and/or not widespread, isolated intense storms  
One or two tornadoes  
Reports of strong winds and wind damage  
Hail ~1", isolated 2"



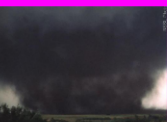
**3 Enhanced Risk  
(ENH)** *Numerous severe storms possible*  
More persistent and/or widespread, a few intense  
A few tornadoes  
Several wind damage reports  
Damaging hail, 1"-2"



**4 Moderate Risk  
(MDT)** *Widespread severe storms likely*  
Long-lived, widespread and intense  
Strong tornadoes  
Widespread wind damage  
Destructive hail, 2" or greater



**5 High Risk  
(HIGH)** *Widespread severe storms expected*  
Long-lived, very widespread and particularly intense  
Tornado outbreak  
Derecho



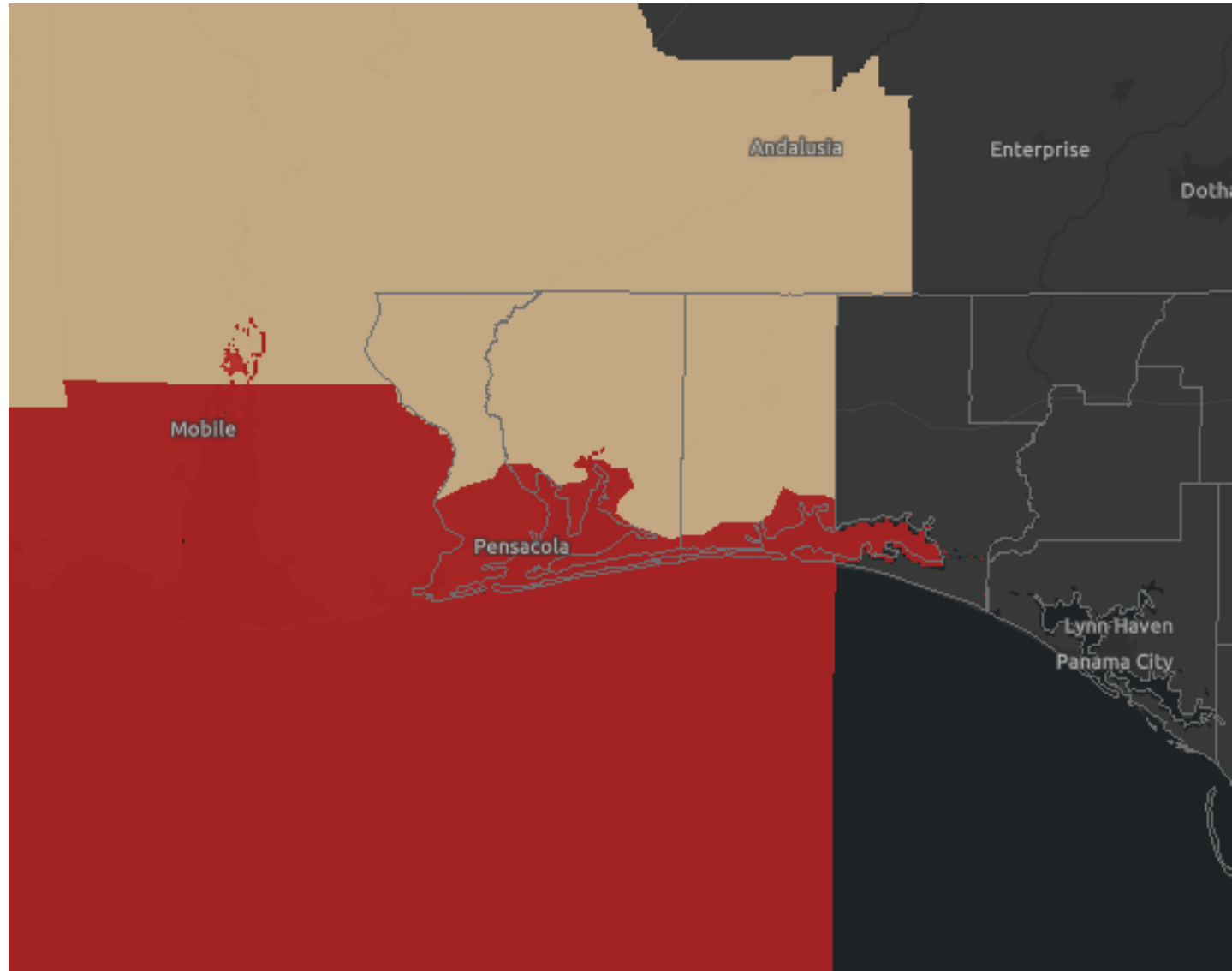


# Wind Watches and Warnings

In Effect Until Further Notice

**Tropical Storm Warnings** are in effect for coastal parts of Escambia, Santa Rosa, and Okaloosa Counties.

**Wind Advisories** are in effect for the inland parts of Escambia, Santa Rosa, and Okaloosa Counties from 10 PM CT tonight until 1 AM CT Sunday







# Tropical Storm & Hurricanes

## Watches Versus Warnings

### ***WATCH***

Tropical storm and/or hurricane conditions are **POSSIBLE** in Watch area

Issued up to 48 hours in advance of tropical storm force winds

### ***WARNING***

Tropical storm and/or hurricane conditions are **EXPECTED** in Warning area

Issued up to 36 hours in advance of onset of tropical storm force winds

Hurricane preparedness activities become difficult once winds reach tropical storm force. **Watches & Warnings are issued in advance of onset of tropical storm force winds, 39-73mph**



NWSMobile



[weather.gov/mob](https://weather.gov/mob)



# Forecast Maximum Wind Gusts

## Saturday and Sunday



### Maximum Wind Gusts: Saturday

Created by FDEM State Meteorological Support Unit || Data from NWS, US Census Bureau, Natural Earth



### Maximum Wind Gusts: Sunday

Created by FDEM State Meteorological Support Unit || Data from NWS, US Census Bureau, Natural Earth



Wind gusts of 35-45 mph are possible in the western Panhandle on Saturday, but sustained tropical storm force winds appear unlikely. Wind gusts elsewhere will generally be around 20-30 mph.



# Overall Summary

## Florida Outlook:

### **Potential Tropical Cyclone #3**

- PTC #3 is located about 285 miles south-southwest of Pensacola, moving north at 16 mph.
- Maximum sustained winds are near 45 mph. Little change in strength is expected, but PTC #3 could still be designated a tropical or subtropical storm today before landfall.
- On the forecast track, the system will approach the Gulf Coast tonight making landfall in southeastern Louisiana. A slow northeastward motion across the southeastern United States is likely after landfall through the weekend.
- With this system being lopsided, most of the impacts will be on the eastern side, which could bring heavy rainfall to the Panhandle even with a landfall in Louisiana.
- 5-10" of rain (locally 10-14"+) is expected in the Panhandle, with 2-4" of rain expected in the Big Bend by Monday.
- Flash Flood Watches are in effect for the entire Florida Panhandle west of the Apalachicola River. Flash flooding will become likely if bands of heavy rainfall affect the same locations. There is a Moderate Risk of flash flooding (level 3 of 4) for the western Panhandle on Saturday.
- A low-end tornado threat is possible in the Panhandle on Saturday, and the Storm Prediction Center has outlined these areas in a Marginal to Slight Risk of isolated tornadoes (level 1-2 of 5). The tornado threat could also extend into Sunday.
- Storm surge may produce tides of 1-3 feet above normal in the Panhandle. High Surf Advisories and Warnings are in effect for the beaches from Escambia through Gulf County. Dangerous rip currents and high surf are expected along Gulf Coast beaches by the end of the week and through the weekend.
- The next name on the list is Claudette (klaw-DET).

The next briefing packet will be issued Saturday morning. For the latest information on the tropics, please visit the National Hurricane Center website at [www.hurricanes.gov](http://www.hurricanes.gov).





# TROPICAL UPDATE



Created by:

Cameron Young, Assistant State Meteorologist

[Cameron.Young@em.myflorida.com](mailto:Cameron.Young@em.myflorida.com)

State Meteorological Support Unit

Florida Division of Emergency Management

Users wishing to subscribe (approval pending) to this distribution list, register at:

[https://public.govdelivery.com/accounts/FLDEM/subscriber/new?topic\\_id=SERT\\_Met\\_Tropics](https://public.govdelivery.com/accounts/FLDEM/subscriber/new?topic_id=SERT_Met_Tropics).

Other reports available for subscription are available at:

<https://public.govdelivery.com/accounts/FLDEM/subscriber/new?preferences=true>