



# TROPICAL UPDATE



9:00 AM EDT

Friday, June 18, 2021

Potential Tropical Cyclone Three

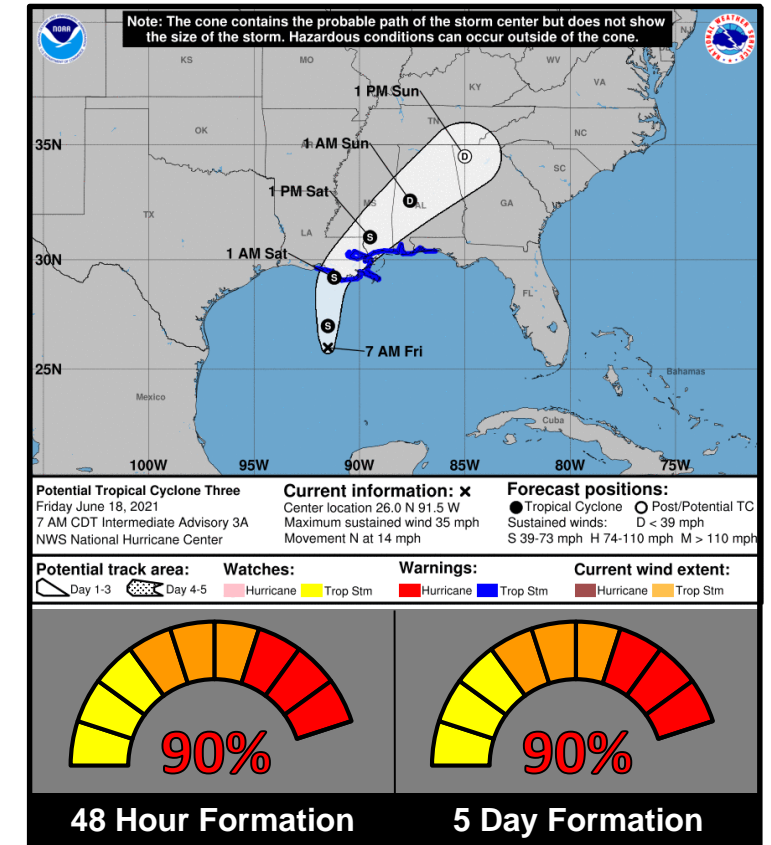
This update is intended for government and emergency response officials, and is provided for informational and situational awareness purposes only. Forecast conditions are subject to change based on a variety of environmental factors. For additional information, or for any life safety concerns with an active weather event please contact your County Emergency Management or Public Safety Office, local National Weather Service forecast office, or visit the National Hurricane Center website at [www.hurricanes.gov](http://www.hurricanes.gov).



# Potential Tropical Cyclone Three

8 AM ET Friday: Florida Threats & Changes Since Last Packet

	MINIMAL	Low	MODERATE	HIGH	EXTREME
WINDS					
STORM SURGE					
FLASH FLOODING					
TORNADOES					
RIP CURRENTS					



## Overview/Recent Changes:

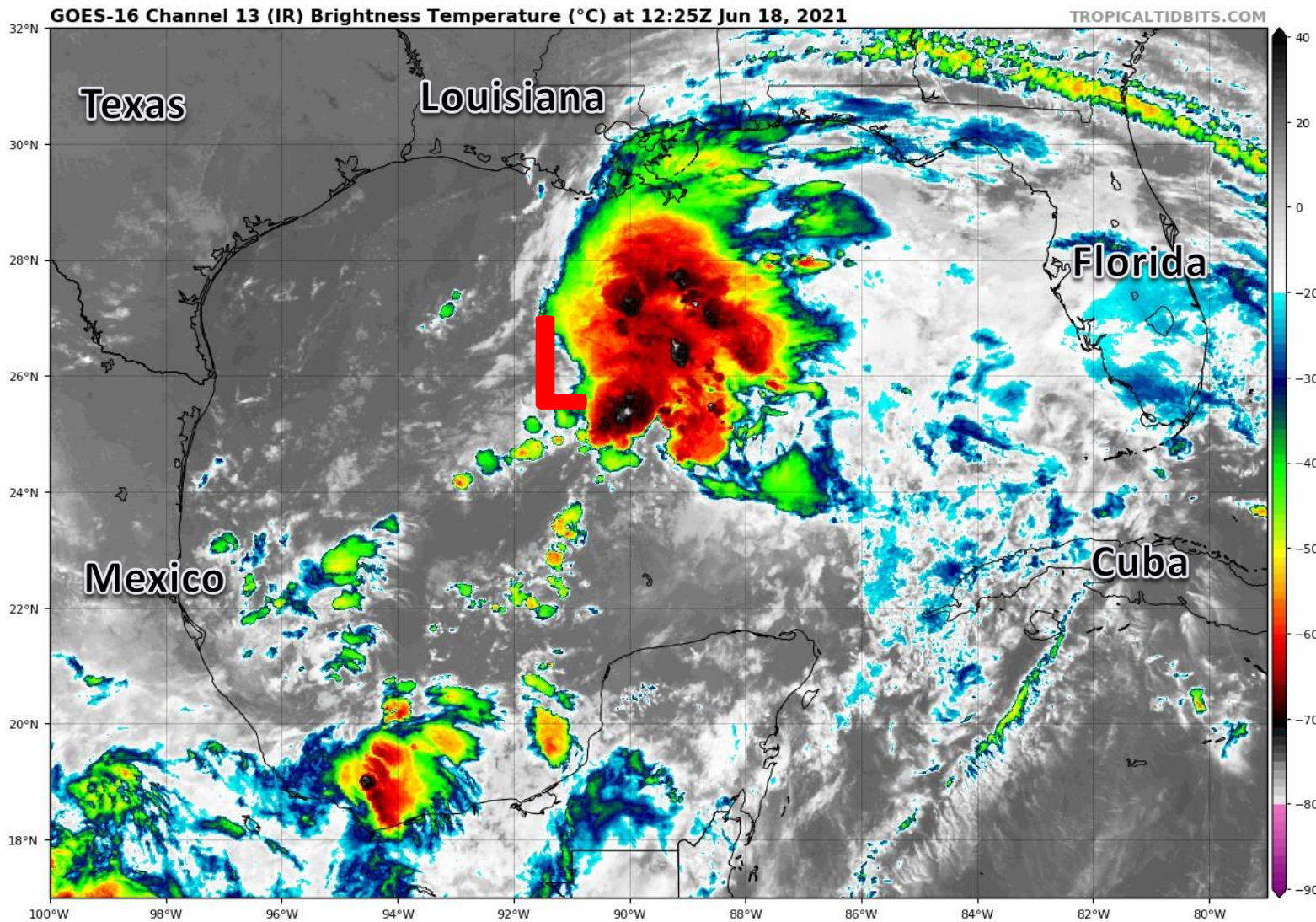
Tropical Storm Warnings have been issued for the western Panhandle coast from Escambia to Okaloosa Counties. Flash Flood Watches have been expanded eastward to the Apalachicola River. PTC #3 is likely to become Claudette later today and make landfall in Louisiana tonight. Rain bands may begin as early as late this afternoon, with most arriving on Saturday. 1-3' of storm surge is possible in the Panhandle, beginning tonight into Saturday. Wind gusts of 35-45 mph are possible in the Panhandle.



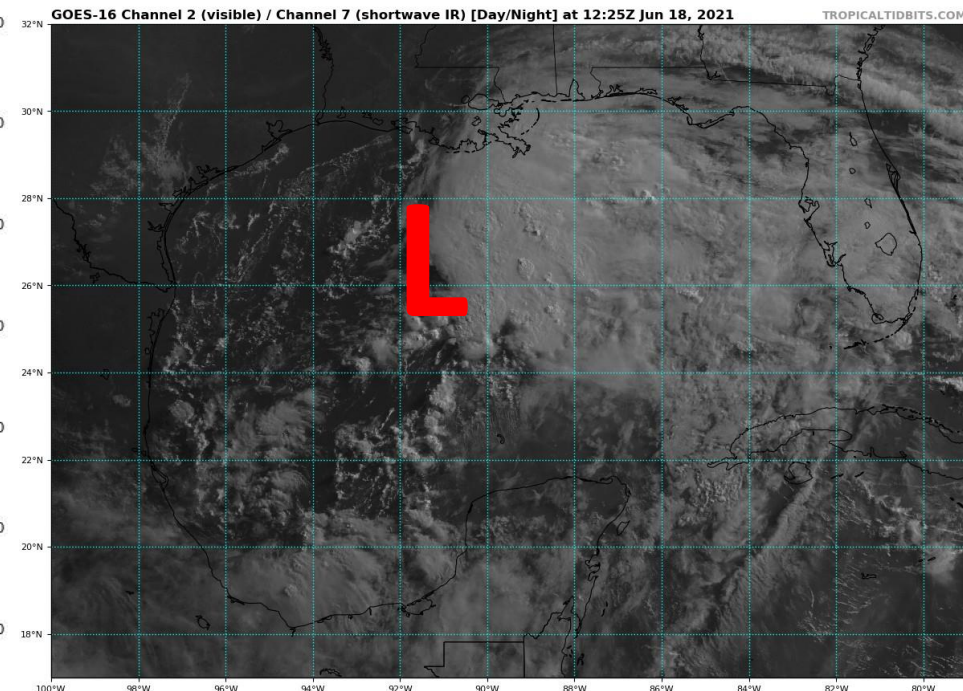


# Satellite Imagery

## Gulf of Mexico – Potential Tropical Cyclone Three



Potential Tropical Cyclone #3 remains disorganized. The center is still not well-defined and broad, and most thunderstorms are displaced to the east of the center. This will remain the case through PTC #3's life.

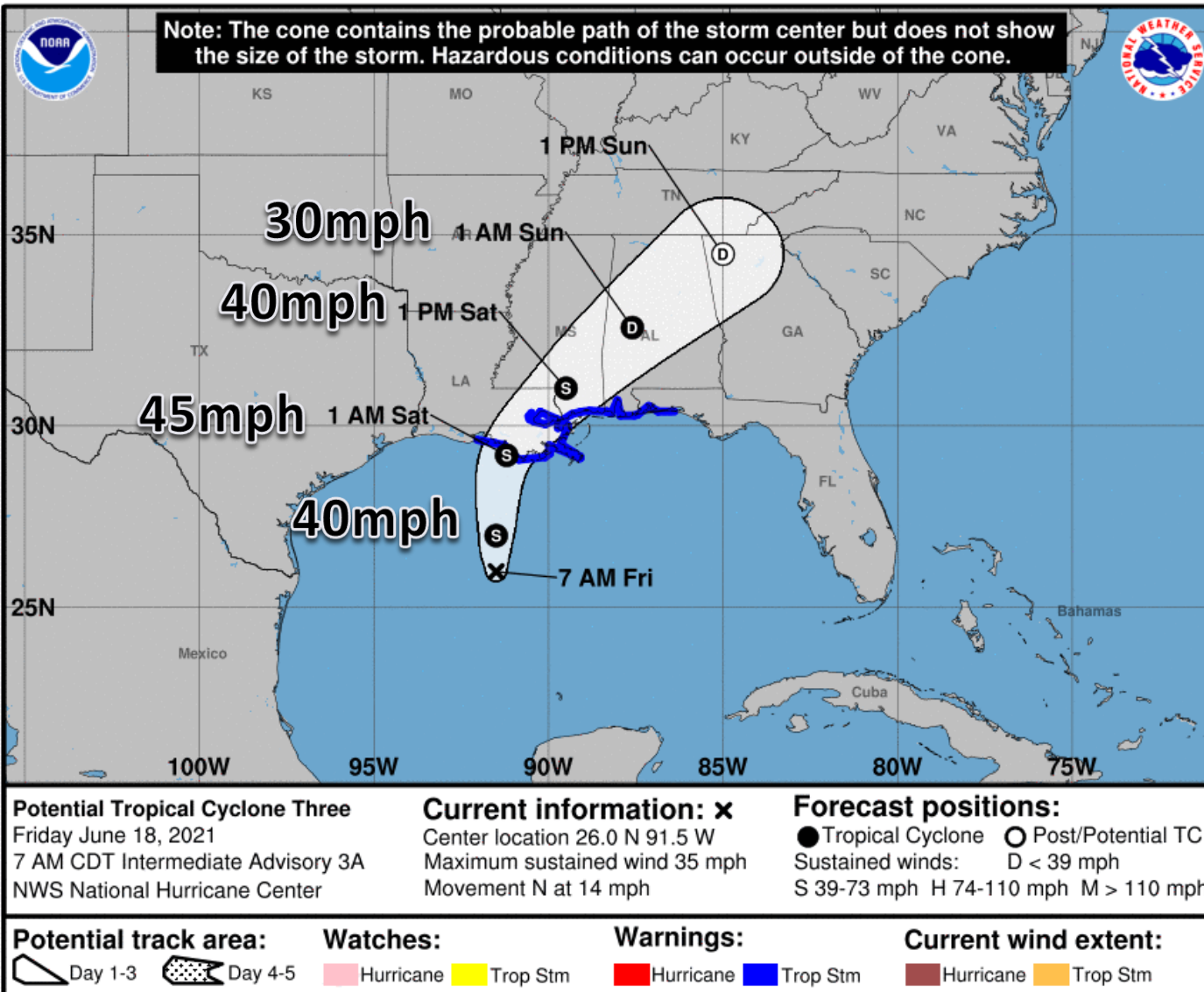






# Official Forecast Track – PTC #3

From the National Hurricane Center – ([LINK](#))



- PTC #3 is located about 255 miles south of Morgan City, LA, or about 385 miles south-southwest of Pensacola, FL.
- PTC #3 is moving to the north at 14 mph. This general motion is expected today through landfall.
- PTC #3 will then turn northeastward over the Southeast US.
- Maximum sustained winds are near 35 mph, and some strengthening is expected tonight and Friday.
- The next name on the list is Claudette.

**\*\*\*DO NOT FOCUS ON WHERE THE CENTER GOES\*\*\***  
***Impacts will extend well to the east of the center of the storm, including the Florida Panhandle. Flash flooding, dangerous rip currents, and isolated tornadoes will all be possible.***



# Key Messages

From the National Hurricane Center



## Key Messages for Potential Tropical Cyclone Three

Advisory 3: 4:00 AM CDT Fri Jun 18, 2021



1. The system is expected to produce heavy rainfall, considerable flash, urban and small stream flooding beginning today and continuing through the weekend along the Central Gulf coast with flood impacts spreading northeastward into the Southern Appalachians.

2. Tropical storm conditions are expected to begin today in areas near and well to the east of the center along portions of the central Gulf Coast from Intracoastal City, Louisiana, to the Okaloosa/Walton County line, Florida, including New Orleans.

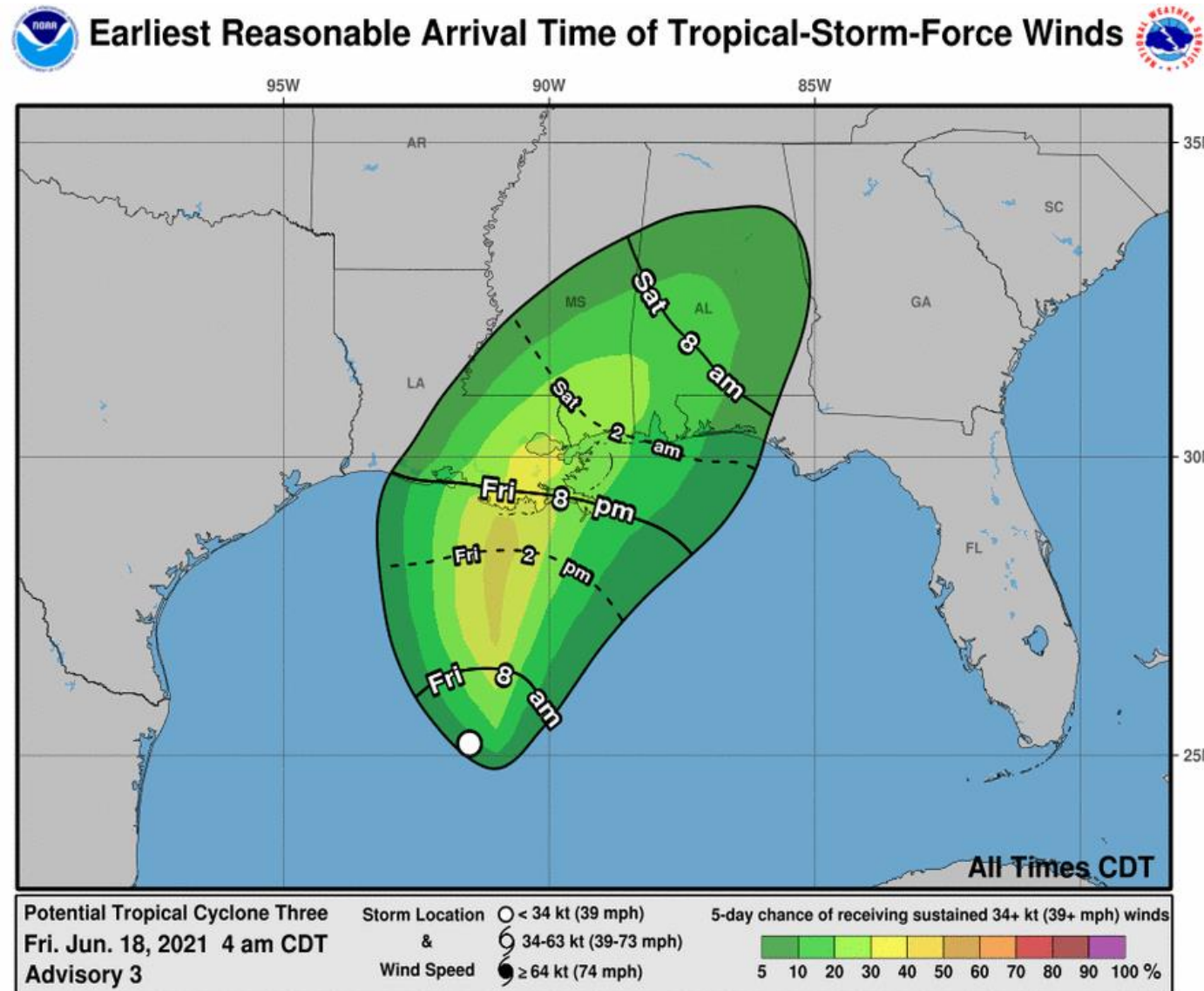


For more information go to [hurricanes.gov](https://hurricanes.gov)



# Time of Arrival & Wind Speed Probabilities

**EARLIEST REASONABLE** Time of Arrival of Tropical Storm Force Winds (>39 mph)



**Pensacola: 10% (+6)**

**Milton: 10% (+6)**

**Destin 6% (+3)**

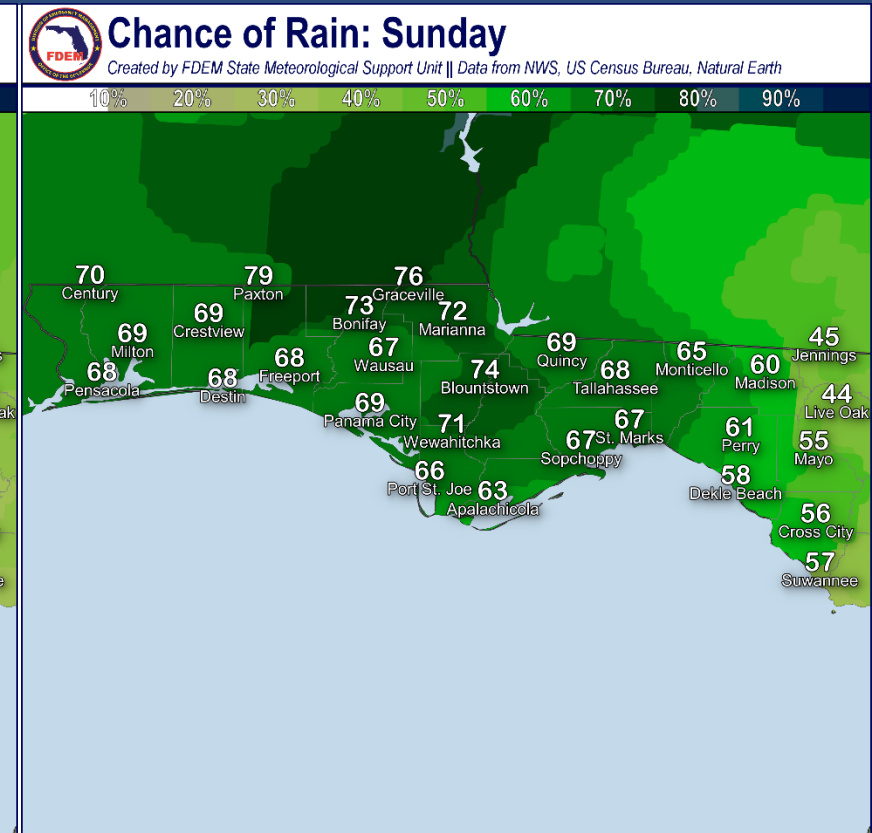
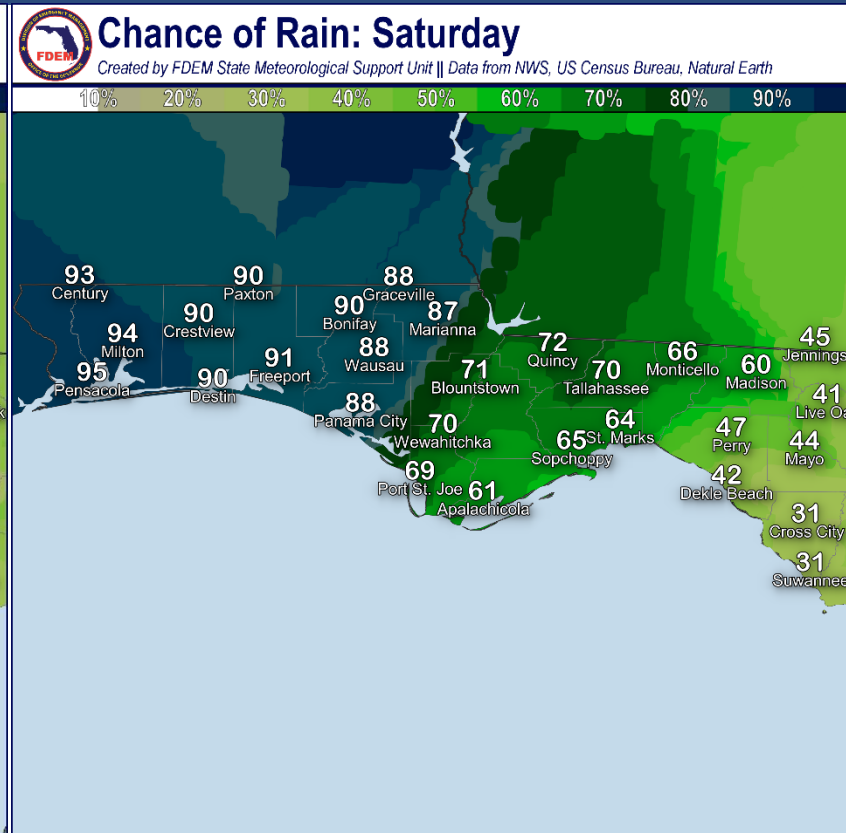
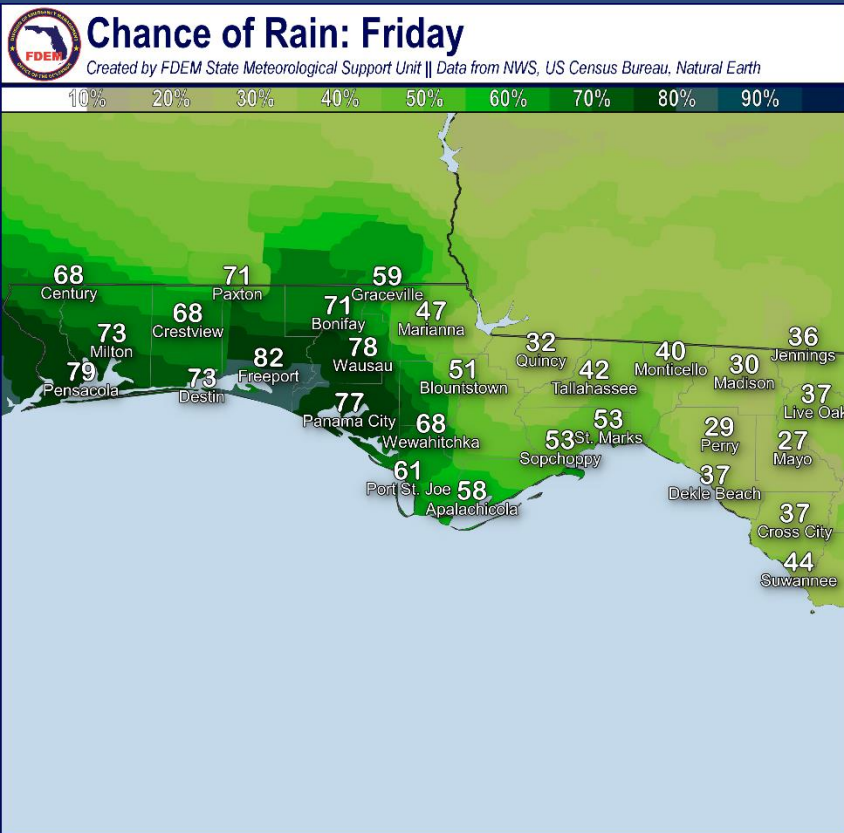
IF tropical storm force winds were to occur in the western Panhandle, the could begin as early as late tonight, but would most likely begin Saturday morning.





# Forecast Rain Chances

## Friday through Sunday – PTC #3

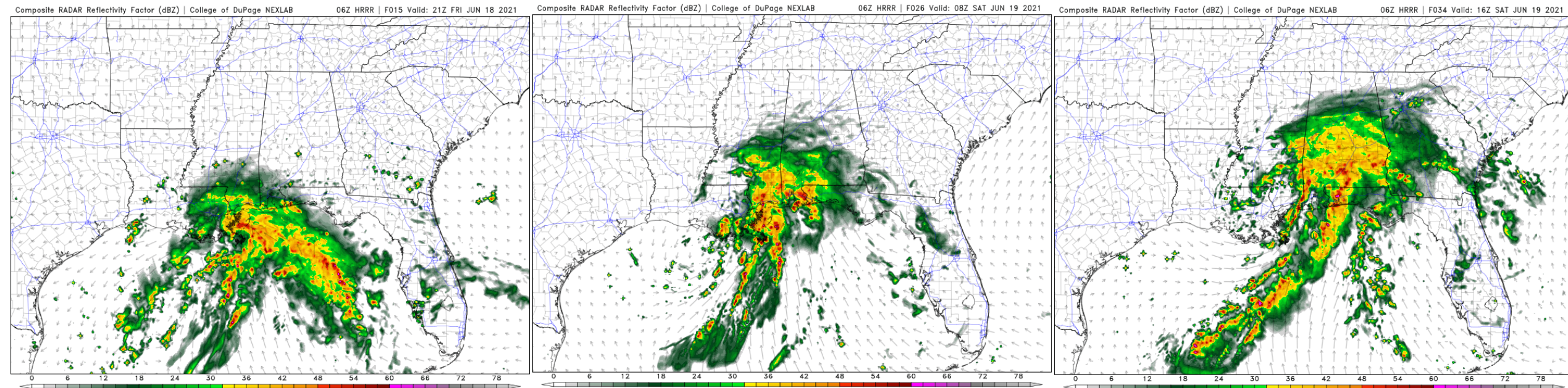


Some outer bands may begin approaching the Panhandle later this afternoon, followed by rounds of heavy rainfall tonight and especially on Saturday. The bands will also be capable of producing gusty winds and isolated tornadoes.



# Model Forecast Radar

**\*\*\*Only Model Guidance – Time & Position Will Vary\*\*\***



Late this Afternoon/Evening

Overnight Tonight

Saturday Morning

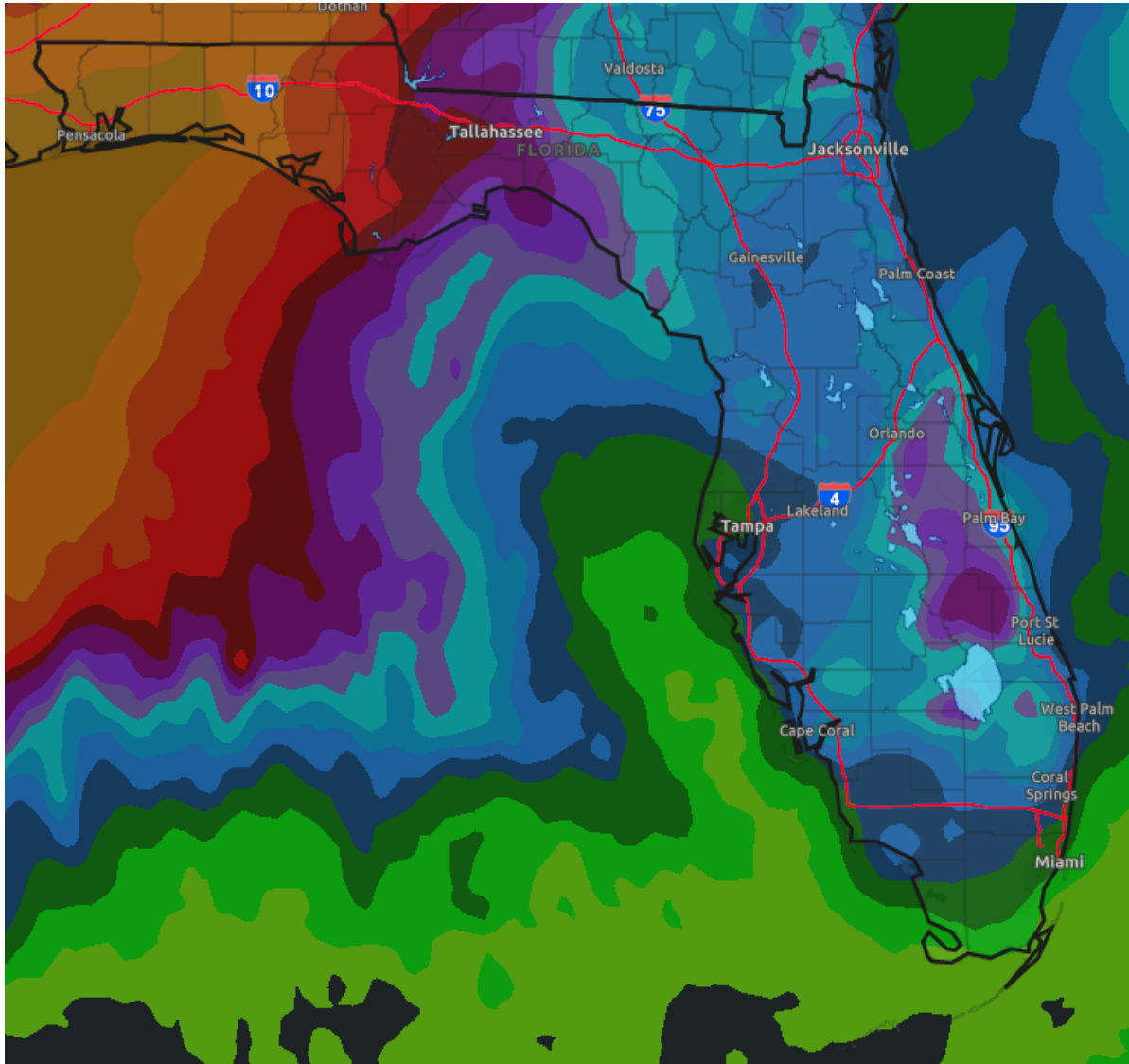
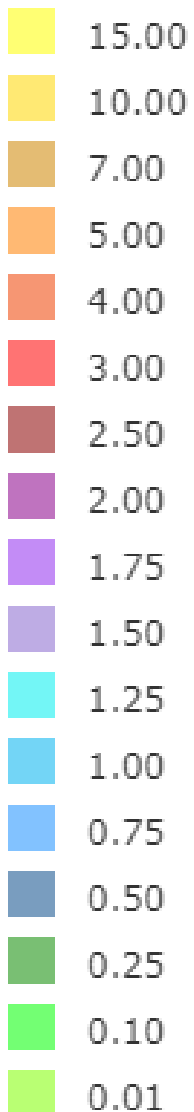
Rain bands will begin moving into the Panhandle late this afternoon or this evening. Additional bands will move through overnight, but Saturday will be the primary day for rain across most of the Panhandle.





# Rainfall Totals Next 7 Days

Ending 8 AM ET Friday



A widespread 4-8" of rain is currently forecast across the Panhandle over the next 7 days, possibly up to 10" in western areas. Localized higher amounts are possible. Rainfall totals of 2-4" are possible across the Big Bend.

**These rainfall totals are highly dependent on the track and organization of the system, both of which are still uncertain.**

The rainfall across the Peninsula is associated with thunderstorms over the next few days and is not related to the tropical system.



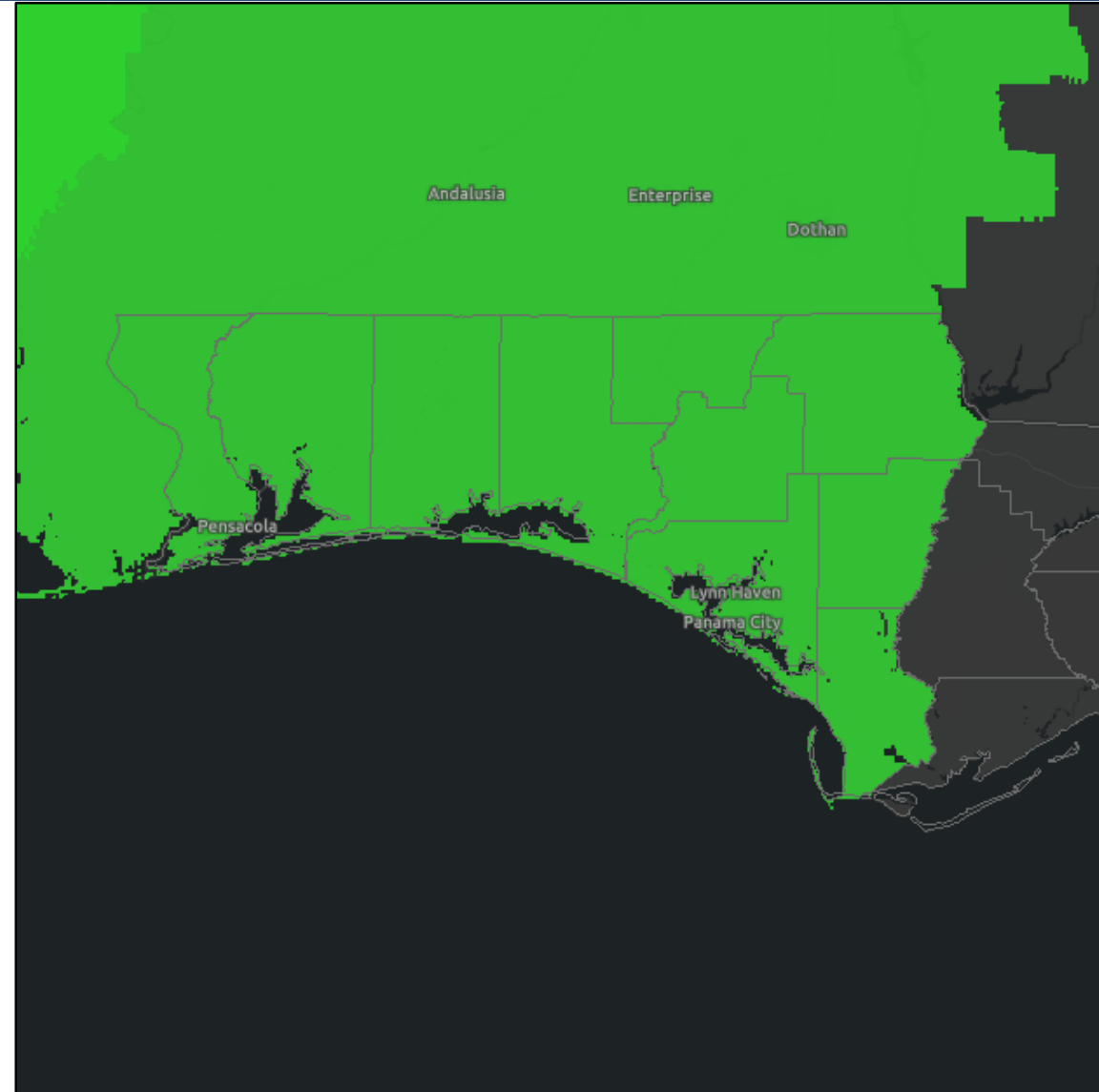
# Flood Watches

Links: [NWS Mobile](#) | [NWS Tallahassee](#)

The Flash Flood Watch for Escambia, Santa Rosa and Okaloosa Counties begins at 12 PM CT today and ends 6 AM CT on Sunday.

The Flash Flood Watch for Walton, Holmes, Washington, Bay, Jackson, Calhoun, and Gulf at 1 AM CT tonight until 7 PM CT on Sunday.

Widespread rainfall totals of 4-8 inches are expected with localized totals of 10 inches or more possible.

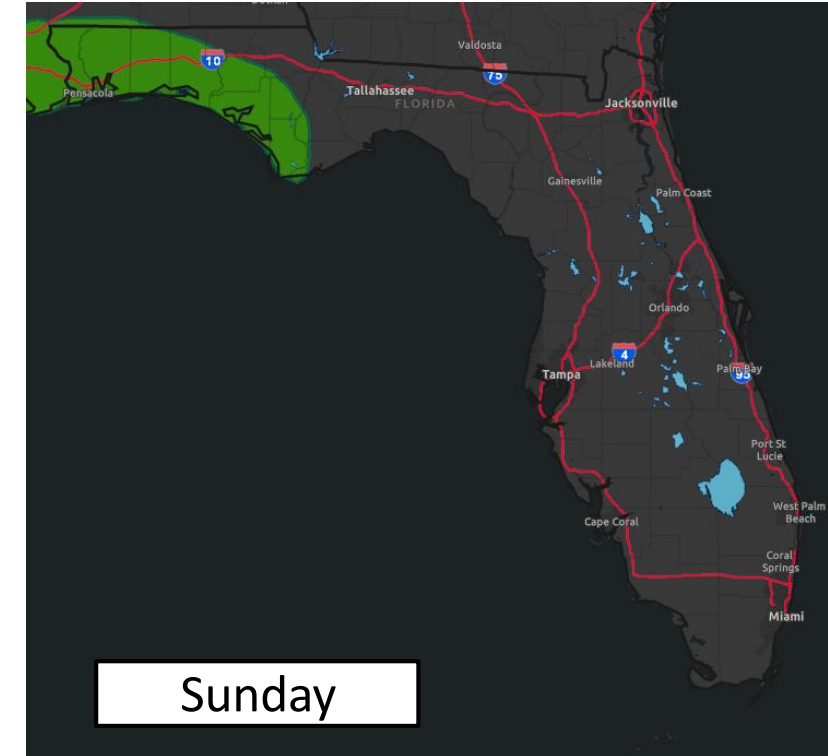
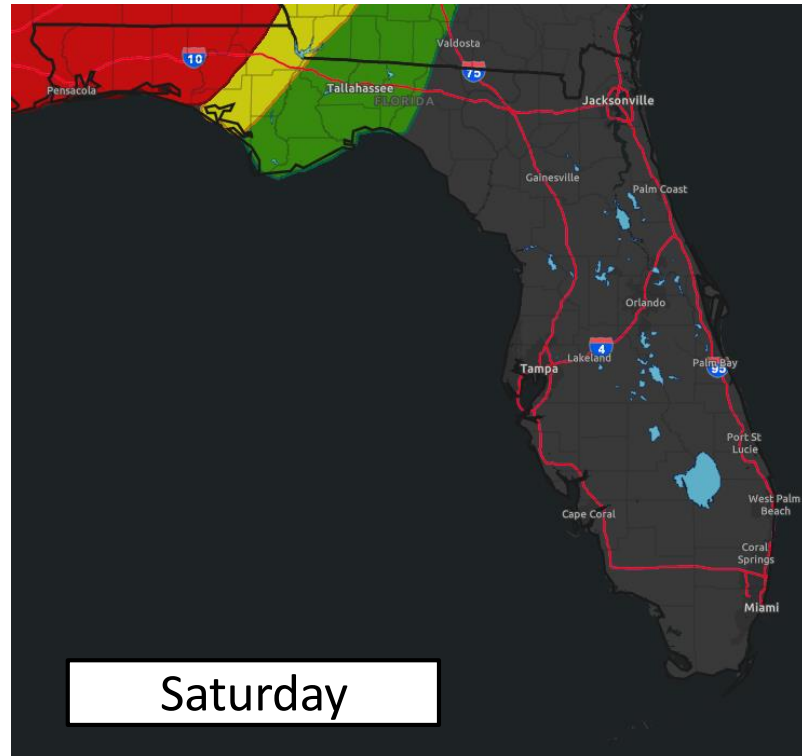
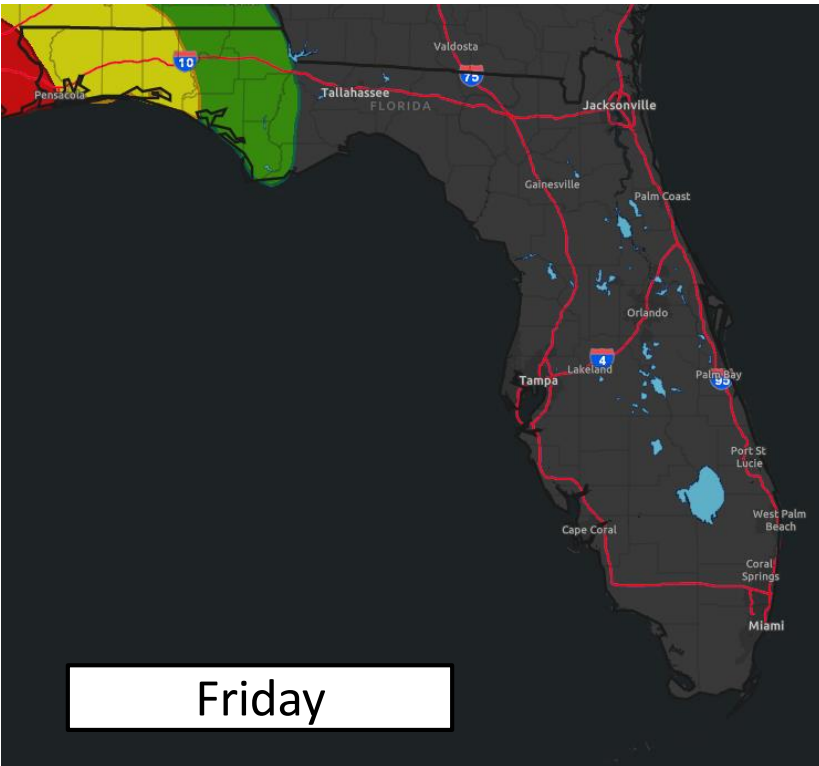






# Flash Flood Outlooks

From the Weather Prediction Center



Risk of rainfall exceeding flash flood guidance within 25 miles of a point to the right of a line

**HIGH: > 50%**

**SLGT: 10%-20%**

**MDT: 20%-50%**

**MRGL: 5%-10%**

Bands of heavy rain from PTC #3 are likely to impact the Panhandle beginning later today into Saturday. Should a heavy rain band begin training over the Panhandle, flash flooding would then become likely.



# Flash Flood Risk Categories

## Understanding the Weather Prediction Center Risk Scale

### Understanding WPC Excessive Rainfall Risk Categories

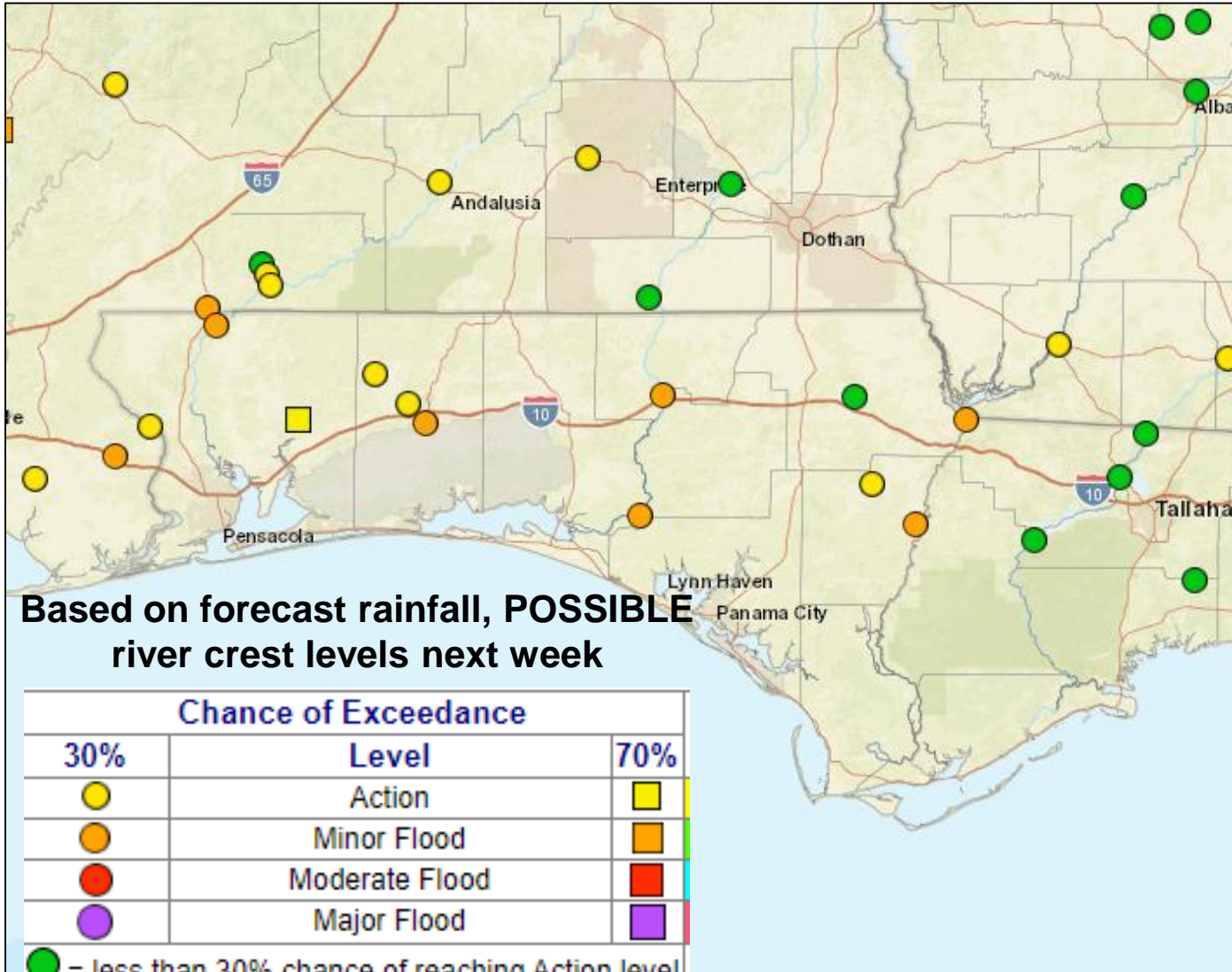
No Area/Label		MARGINAL (MRGL)	SLIGHT (SLGT)	MODERATE (MDT)	HIGH (HIGH)
Flash floods are generally not expected.		Isolated flash floods possible	Scattered flash floods possible	Numerous flash floods likely	Widespread flash floods expected
<a href="http://www.wpc.ncep.noaa.gov">www.wpc.ncep.noaa.gov</a> @NWSWPC		Localized and primarily affecting places that can experience rapid runoff with heavy rainfall.	Mainly localized. Most vulnerable are urban areas, roads, small streams and washes. Isolated significant flash floods possible.	Numerous flash flooding events with significant events possible. Many streams may flood, potentially affecting larger rivers.	Severe, widespread flash flooding. Areas that don't normally experience flash flooding, could. Lives and property in greater danger.
Flash flooding near me?	Flash Flooding NO Flash Flooding	<div><div></div><div></div><div></div><div></div><div></div><div></div><div></div><div></div><div></div><div></div><div></div><div></div><div></div><div></div><div></div><div></div><div></div><div></div><div></div><div></div><div></div><div></div><div></div><div></div><div></div><div></div><div></div><div></div><div></div><div></div><div></div><div></div><div></div><div></div><div></div><div></div><div></div><div></div><div></div><div></div><div></div><div></div><div></div><div></div><div></div><div></div><div></div><div></div><div></div><div></div><div></div><div></div><div></div><div></div><div></div><div></div><div></div><div></div><div></div><div></div><div></div><div></div><div></div><div></div><div></div><div></div><div></div><div></div><div></div><div></div><div></div><div></div><div></div><div></div><div></div><div></div><div></div><div></div><div></div><div></div><div></div><div></div><div></div><div></div><div></div><div></div><div></div><div></div><div></div><div></div><div></div><div></div><div></div><div></div><div></div><div></div><div></div><div></div><div></div><div></div><div></div><div></div><div></div><div></div><div></div><div></div><div></div><div></div><div></div><div></div><div></div><div></div><div></div><div></div><div></div><div></div><div></div><div></div><div></div><div></div><div></div><div></div><div></div><div></div><div></div><div></div><div></div><div></div><div></div><div></div><div></div><div></div><div></div><div></div><div></div><div></div><div></div><div></div><div></div><div></div><div></div><div></div><div></div><div></div><div></div><div></div><div></div><div></div><div></div><div></div><div></div><div></div><div></div><div></div><div></div><div></div><div></div><div></div><div></div><div></div><div></div><div></div><div></div><div></div><div></div><div></div><div></div><div></div><div></div><div></div><div></div><div></div><div></div><div></div><div></div><div></div><div></div><div></div><div></div><div></div><div></div><div></div><div></div><div></div><div></div><div></div><div></div><div></div><div></div><div></div><div></div><div></div><div></div><div></div><div></div><div></div><div></div><div></div><div></div><div></div><div></div><div></div><div></div><div></div><div></div><div></div><div></div><div></div><div></div><div></div><div></div><div></div><div></div><div></div><div></div><div></div><div></div><div></div><div></div><div></div><div></div><div></div><div></div><div></div><div></div><div></div><div></div><div></div><div></div><div></div><div></div><div></div><div></div><div></div><div></div><div></div><div></div><div></div><div></div><div></div><div></div><div></div><div></div><div></div><div></div><div></div><div></div><div></div><div></div><div></div><div></div><div></div><div></div><div></div><div></div><div></div><div></div><div></div><div></div><div></div><div></div><div></div><div></div><div></div><div></div><div></div><div></div><div></div><div></div><div></div><div></div><div></div><div></div><div></div><div></div><div></div><div></div><div></div><div></div><div></div><div></div><div></div><div></div><div></div><div></div><div></div><div></div><div></div><div></div><div></div><div></div><div></div><div></div><div></div><div></div><div></div><div></div><div></div><div></div><div></div><div></div><div></div><div></div><div></div><div></div><div></div><div></div><div></div><div></div><div></div><div></div><div></div><div></div><div></div><div></div><div></div><div></div><div></div><div></div><div></div><div></div><div></div><div></div><div></div><div></div><div></div><div></div><div></div><div></div><div></div><div></div><div></div><div></div><div></div><div></div><div></div><div></div><div></div><div></div><div></div><div></div><div></div><div></div><div></div><div></div><div></div><div></div><div></div><div></div><div></div><div></div><div></div><div></div><div></div><div></div><div></div><div></div><div></div><div></div><div></div><div></div><div></div><div></div><div></div><div></div><div></div><div></div><div></div><div></div><div></div><div></div><div></div><div></div><div></div><div></div><div></div><div></div><div></div><div></div><div></div><div></div><div></div><div></div><div></div><div></div><div></div><div></div><div></div><div></div><div></div><div></div><div></div><div></div><div></div><div></div><div></div><div></div><div></div><div></div><div></div><div></div><div></div><div></div><div></div><div></div><div></div><div></div><div></div><div></div><div></div><div></div><div></div><div></div><div></div><div></div><div></div><div></div><div></div><div></div><div></div><div></div><div></div><div></div><div></div><div></div><div></div><div></div><div></div><div></div><div></div><div></div><div></div><div></div><div></div><div></div><div></div><div></div><div></div><div></div><div></div><div></div><div></div><div></div><div></div><div></div><div></div><div></div><div></div><div></div><div></div><div></div><div></div><div></div><div></div><div></div><div></div><div></div><div></div><div></div><div></div><div></div><div></div><div></div><div></div><div></div><div></div><div></div><div></div><div></div><div></div><div></div><div></div><div></div><div></div><div></div><div></div><div></div><div></div><div></div><div></div><div></div><div></div><div></div><div></div><div></div><div></div><div></div><div></div><div></div><div></div><div></div><div></div><div></div><div></div><div></div><div></div><div></div><div></div><div></div><div></div><div></div><div></div><div></div><div></div><div></div><div></div><div></div><div></div><div></div><div></div><div></div><div></div><div></div><div></div><div></div><div></div><div></div><div></div><div></div><div></div><div></div><div></div><div></div><div></div><div></div><div></div><div></div><div></div><div></div><div></div><div></div><div></div><div></div><div></div><div></div><div></div><div></div><div></div><div></div><div></div><div></div><div></div><div></div><div></div><div></div><div></div><div></div><div></div><div></div><div></div><div></div><div></div><div></div><div></div><div></div><div></div><div></div><div></div><div></div><div></div><div></div><div></div><div></div><div></div><div></div><div></div><div></div><div></div><div></div><div></div><div></div><div></div><div></div><div></div><div></div><div></div><div></div><div></div><div></div><div></div><div></div><div></div><div></div><div></div><div></div><div></div><div></div><div></div><div></div><div></div><div></div><div></div><div></div><div></div><div></div><div></div><div></div><div></div><div></div><div></div><div></div><div></div><div></div><div></div><div></div><div></div><div></div><div></div><div></div><div></div><div></div><div></div><div></div><div></div><div></div><div></div><div></div><div></div><div></div><div></div><div></div><div></div><div></div><div></div><div></div><div></div><div></div><div></div><div></div><div></div><div></div><div></div><div></div><div></div><div></div><div></div><div></div><div></div><div></div><div></div><div></div><div></div><div></div><div></div><div></div><div></div><div></div><div></div><div></div><div></div><div></div><div></div><div></div><div></div><div></div><div></div><div></div><div></div><div></div><div></div><div></div><div></div><div></div><div></div><div></div><div></div><div></div><div></div><div></div><div></div><div></div><div></div><div></div><div></div><div></div><div></div><div></div><div></div><div></div><div></div><div></div><div></div><div></div><div></div><div></div><div></div><div></div><div></div><div></div><div></div><div></div><div></div><div></div><div></div><div></div><div></div><div></div><div></div><div></div><div></div><div></div><div></div><div></div><div></div><div></div><div></div><div></div><div></div><div></div><div></div><div></div><div></div><div></div><div></div><div></div><div></div><div></div><div></div><div></div><div></div><div></div><div></div><div></div><div></div><div></div><div></div><div></div><div></div><div></div><div></div><div></div><div></div><div></div><div></div><div></div><div></div><div></div><div></div><div></div><div></div><div></div><div></div><div></div><div></div><div></div><div></div><div></div><div></div><div></div><div></div><div></div><div></div><div></div><div></div><div></div><div></div><div></div><div></div><div></div><div></div><div></div><div></div><div></div><div></div><div></div><div></div><div></div><div></div><div></div><div></div><div></div><div></div><div></div><div></div><div></div><div></div><div></div><div></div><div></div><div></div><div></div><div></div><div></div><div></div><div></div><div></div><div></div><div></div><div></div><div></div><div></div><div></div><div></div><div></div><div></div><div></div><div></div><div></div><div></div><div></div><div></div><div></div><div></div><div></div><div></div><div></div><div></div><div></div><div></div><div></div><div></div><div></div><div></div><div></div><div></div><div></div><div></div><div></div><div></div><div></div><div></div><div></div><div></div><div></div><div></div><div></div><div></div><div></div><div></div><div></div><div></div><div></div><div></div><div></div><div></div><div></div><div></div><div></div><div></div><div></div><div></div><div></div><div></div><div></div><div></div><div></div><div></div><div></div><div></div><div></div><div></div><div></div><div></div><div></div><div></div><div></div><div></div><div></div><div></div><div></div><div></div><div></div><div></div><div></div><div></div><div></div><div></div><div></div><div></div><div></div><div></div><div></div><div></div><div></div><div></div><div></div><div></div><div></div><div></div><div></div><div></div><div></div><div></div><div></div><div></div><div></div><div></div><div></div><div></div><div></div><div></div><div></div><div></div><div></div><div></div><div></div><div></div><div></div><div></div><div></div><div></div><div></div><div></div><div></div><div></div><div></div><div></div><div></div><div></div><div></div><div></div><div></div><div></div><div></div><div></div><div></div><div></div><div></div><div></div><div></div><div></div><div></div><div></div><div></div><div></div><div></div><div></div><div></div><div></div><div></div><div></div><div></div><div></div><div></div><div></div><div></div><div></div><div></div><div></div><div></div><div></div><div></div><div></div><div></div><div></div><div></div><div></div><div></div><div></div><div></div><div></div><div></div><div></div><div></div><div></div><div></div><div></div><div></div><div></div><div></div><div></div><div></div><div></div><div></div><div></div><div></div><div></div><div></div><div></div><div></div><div></div><div></div><div></div><div></div><div></div><div></div><div></div><div></div><div></div><div></div><div></div><div></div><div></div><div></div><div></div><div></div><div></div><div></div><div></div><div></div><div></div><div></div><div></div><div></div><div></div><div></div><div></div><div></div><div></div><div></div><div></div><div></div><div></div><div></div><div></div><div></div><div></div><div></div><div></div><div></div><div></div><div></div><div></div><div></div><div></div><div></div><div></div><div></div><div></div><div></div><div></div><div></div><div></div><div></div><div></div><div></div><div></div><div></div><div></div><div></div><div></div><div></div><div></div><div></div><div></div><div></div><div></div><div></div><div></div><div></div><div></div><div></div><div></div><div></div><div></div><div></div><div></div><div></div><div></div><div></div><div></div><div></div><div></div><div></div><div></div><div></div><div></div><div></div><div></div><div></div><div></div><div></div><div></div><div></div><div></div><div></div><div></div><div></div><div></div><div></div><div></div><div></div><div></div><div></div><div></div><div></div><div></div><div></div><div></div><div></div><div></div><div></div><div></div><div></div><div></div><div></div><div></div><div></div><div></div><div></div><div></div><div></div><div></div><div></div><div></div><div></div><div></div><div></div><div></div><div></div><div></div><div></div><div></div><div></div><div></div><div></div><div></div><div></div><div></div><div></div><div></div><div></div><div></div><div></div><div></div><div></div><div></div><div></div><div></div><div></div><div></div><div></div><div></div><div></div><div></div><div></div><div></div><div></div><div></div><div></div><div></div><div></div><div></div><div></div><div></div><div></div><div></div><div></div><div></div><div></div><div></div><div></div><div></div><div></div><div></div><div></div><div></div><div></div><div></div><div></div><div></div><div></div><div></div><div></div><div></div><div></div><div></div><div></div><div></div><div></div><div></div><div></div><div></div><div></div><div></div><div></div><div></div><div></div><div></div><div></div><div></div><div></div><div></div><div></div><div></div><div></div><div></div><div></div><div></div><div></div><div></div><div></div><div></div><div></div><div></div><div></div><div></div><div></div><div></div><div></div><div></div><div></div><div></div><div></div><div></div><div></div><div></div><div></div><div></div><div></div><div></div><div></div><div></div><div></div><div></div><div></div><div></div><div></div><div></div><div></div><div></div><div></div><div></div><div></div><div></div><div></div><div>&lt;/</div></div>			





# Possible River Flooding

## Chance of River Flooding Based on Range of Forecasted Rainfall



With the recent dry weather, rivers are running below normal. This will help mitigate any significant river flooding.

It will likely take over 5-7" of rain to result in minor river flooding in the Panhandle.



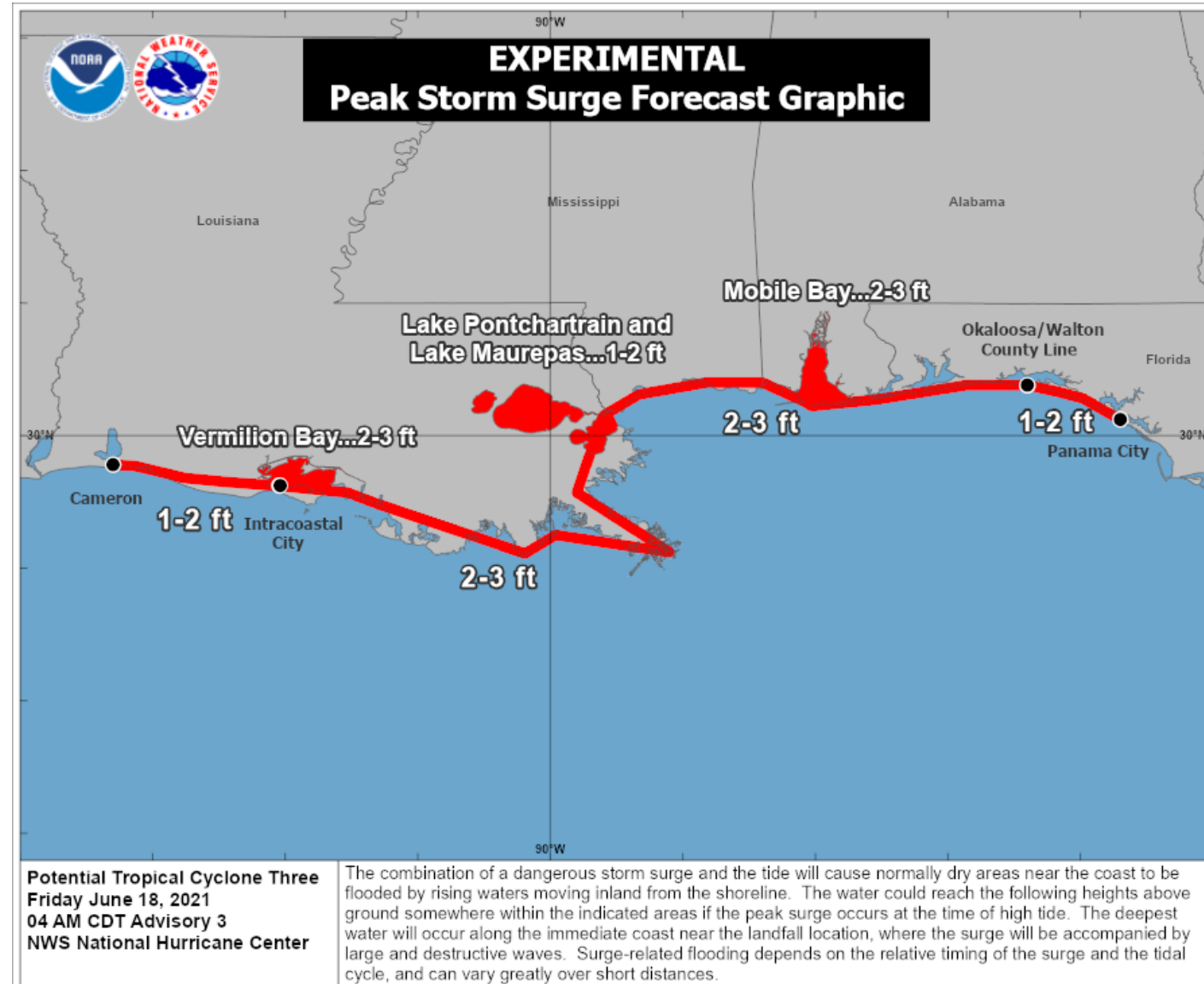
# Storm Surge/Coastal Flooding

## This Weekend

Storm surge of 2-3' is possible from the Alabama/Florida border to the Okaloosa/Walton County line.

1-2' of storm surge is possible from the Okaloosa/Walton County line to Panama City.

This will result in nuisance to minor coastal flooding, particularly in normally flood-prone areas.

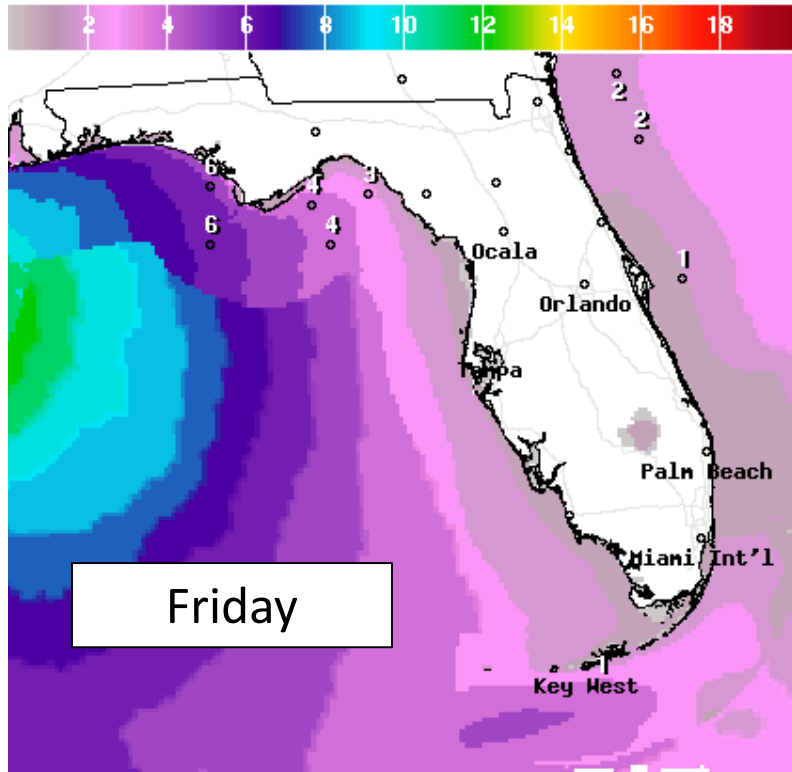






# Forecast Wave Heights

## Friday through Sunday

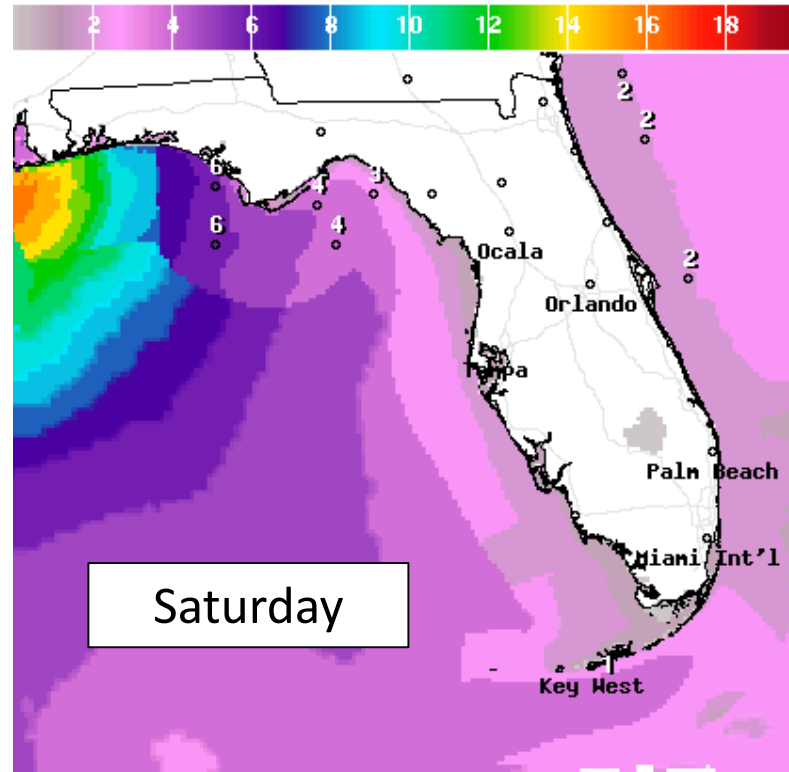


Wave Height(ft) Ending Fri Jun 18 2021 8PM EDT  
(Sat Jun 19 2021 00Z)



National Digital Forecast Database

11z issuance Graphic created-Jun 18 7:22AM EDT

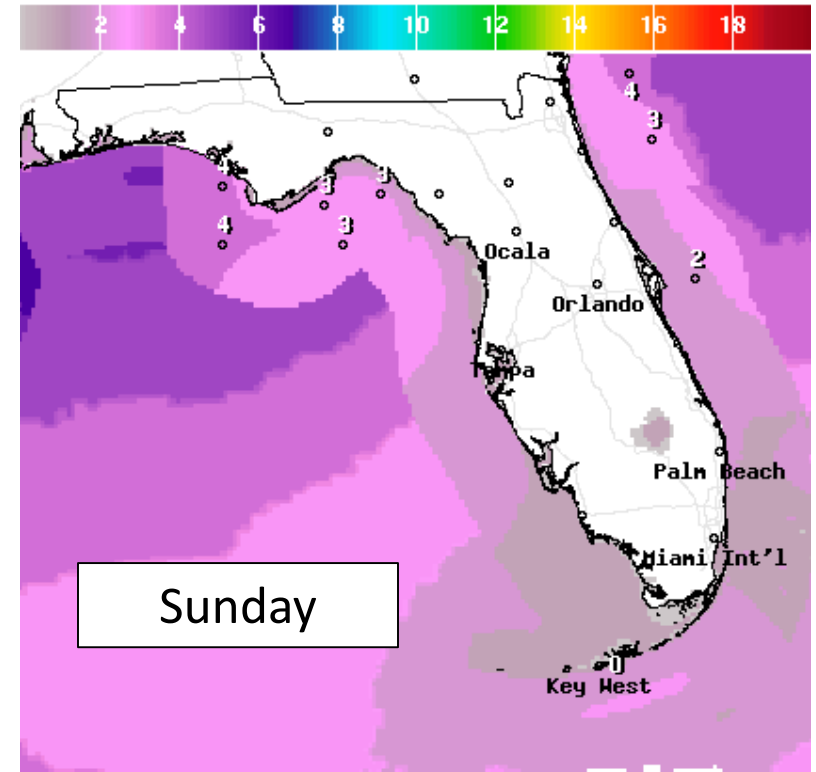


Wave Height(ft) Ending Sat Jun 19 2021 2PM EDT  
(Sat Jun 19 2021 18Z)



National Digital Forecast Database

11z issuance Graphic created-Jun 18 7:22AM EDT



Wave Height(ft) Ending Sun Jun 20 2021 8PM EDT  
(Mon Jun 21 2021 00Z)



National Digital Forecast Database

11z issuance Graphic created-Jun 18 7:23AM EDT



Surf will begin to build along the Panhandle beaches late Thursday into Friday and remain elevated through the weekend. High Surf Warnings and Advisories is in effect from Escambia to Gulf Counties. This could result in some beach erosion. Dangerous rip currents are likely along the Panhandle beaches.



# Severe Weather Outlook Saturday

From the Storm Prediction Center

## 5 - High

Widespread severe storms expected

## 4 - Moderate

Widespread severe storms likely

## 3 - Enhanced

Numerous severe storms possible

## 2 - Slight

Scattered severe storms possible

## 1 - Marginal

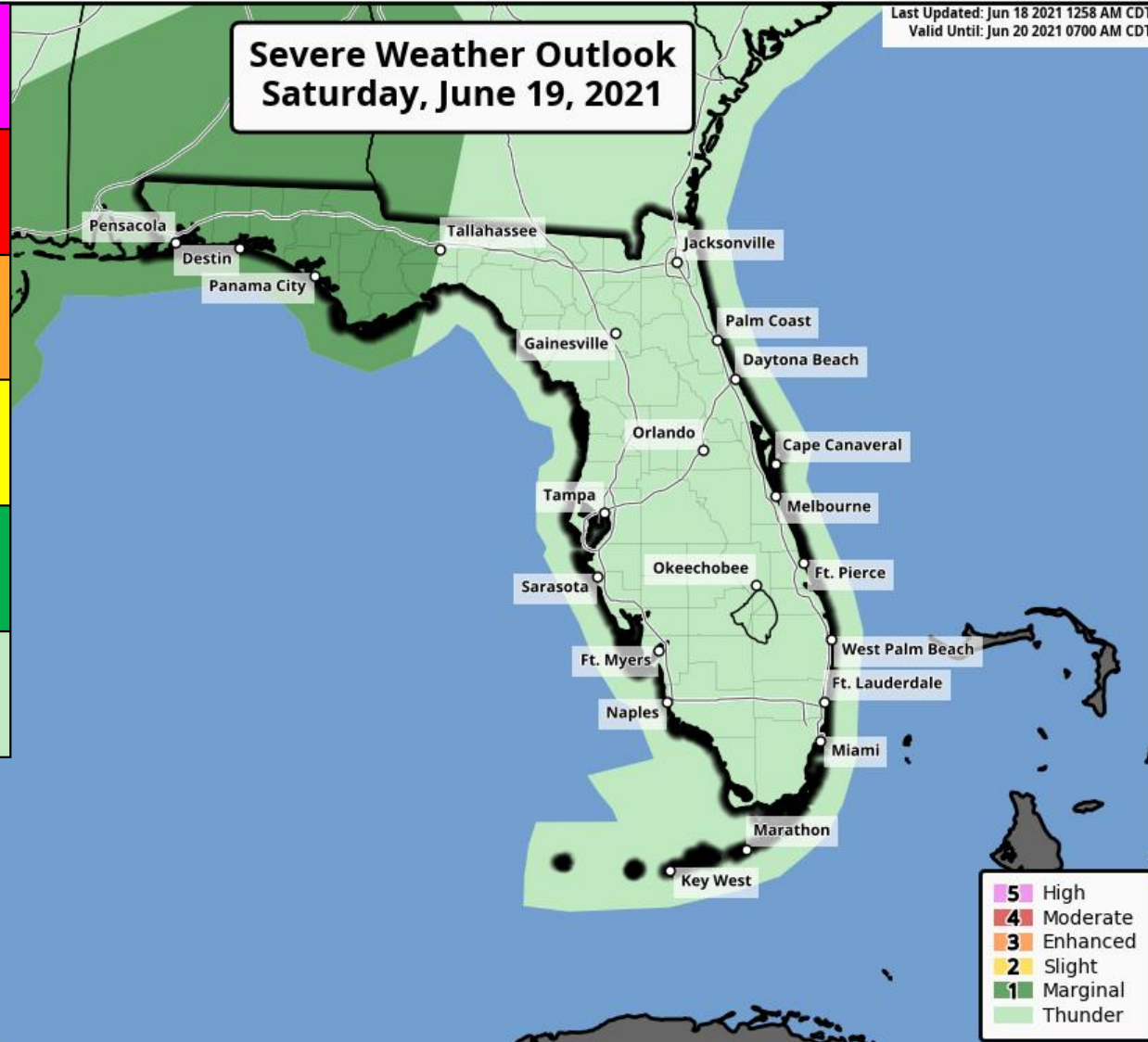
Isolated severe storms possible

## Thunderstorms

No severe storms expected

## Severe Weather Outlook Saturday, June 19, 2021

Last Updated: Jun 18 2021 1258 AM CDT  
Valid Until: Jun 20 2021 0700 AM CDT



As the outer bands of PTC #3 move onshore on Saturday, there will be a low-end tornado threat.

The Storm Prediction Center has outlined areas from Tallahassee westward in a Marginal Risk for severe weather (level 1 of 5).

It is possible that some areas could see an upgrade to a Slight Risk this afternoon.



National Weather Service  
Storm Prediction Center

<http://www.spc.noaa.gov>



# Severe Thunderstorm Risk Categories

## Understanding the Storm Prediction Center Risk Scale

### Understanding Severe Thunderstorm Risk Categories

THUNDERSTORMS (no label)	1 - MARGINAL (MRGL)	2 - SLIGHT (SLGT)	3 - ENHANCED (ENH)	4 - MODERATE (MDT)	5 - HIGH (HIGH)
No severe* thunderstorms expected	Isolated severe thunderstorms possible	Scattered severe storms possible	Numerous severe storms possible	Widespread severe storms likely	Widespread severe storms expected
Lightning/flooding threats exist with <u>all</u> thunderstorms	Limited in duration and/or coverage and/or intensity	Short-lived and/or not widespread, isolated intense storms possible	More persistent and/or widespread, a few intense	Long-lived, widespread and intense	Long-lived, very widespread and particularly intense
					

\* NWS defines a severe thunderstorm as measured wind gusts to at least 58 mph, and/or hail to at least one inch in diameter, and/or a tornado. All thunderstorm categories imply lightning and the potential for flooding. Categories are also tied to the probability of a severe weather event within 25 miles of your location.



National Weather Service

[www.spc.noaa.gov](http://www.spc.noaa.gov)



**Thunderstorms  
(no label)** No severe\* thunderstorms expected  
Lightning/flooding threat exists with all thunderstorms  
Winds to 40 mph and small hail possible



**1 Marginal Risk  
(MRGL)** *Isolated severe thunderstorms possible*  
Limited in duration and/or coverage and/or intensity  
Wind to 40-60 mph, hail up to 1", and low tornado risk



**2 Slight Risk  
(SLGT)** *Scattered severe storms possible*  
Short-lived and/or not widespread, isolated intense storms  
One or two tornadoes  
Reports of strong winds and wind damage  
Hail ~1", isolated 2"



**3 Enhanced Risk  
(ENH)** *Numerous severe storms possible*  
More persistent and/or widespread, a few intense  
A few tornadoes  
Several wind damage reports  
Damaging hail, 1"-2"



**4 Moderate Risk  
(MDT)** *Widespread severe storms likely*  
Long-lived, widespread and intense  
Strong tornadoes  
Widespread wind damage  
Destructive hail, 2" or greater



**5 High Risk  
(HIGH)** *Widespread severe storms expected*  
Long-lived, very widespread and particularly intense  
Tornado outbreak  
Derecho





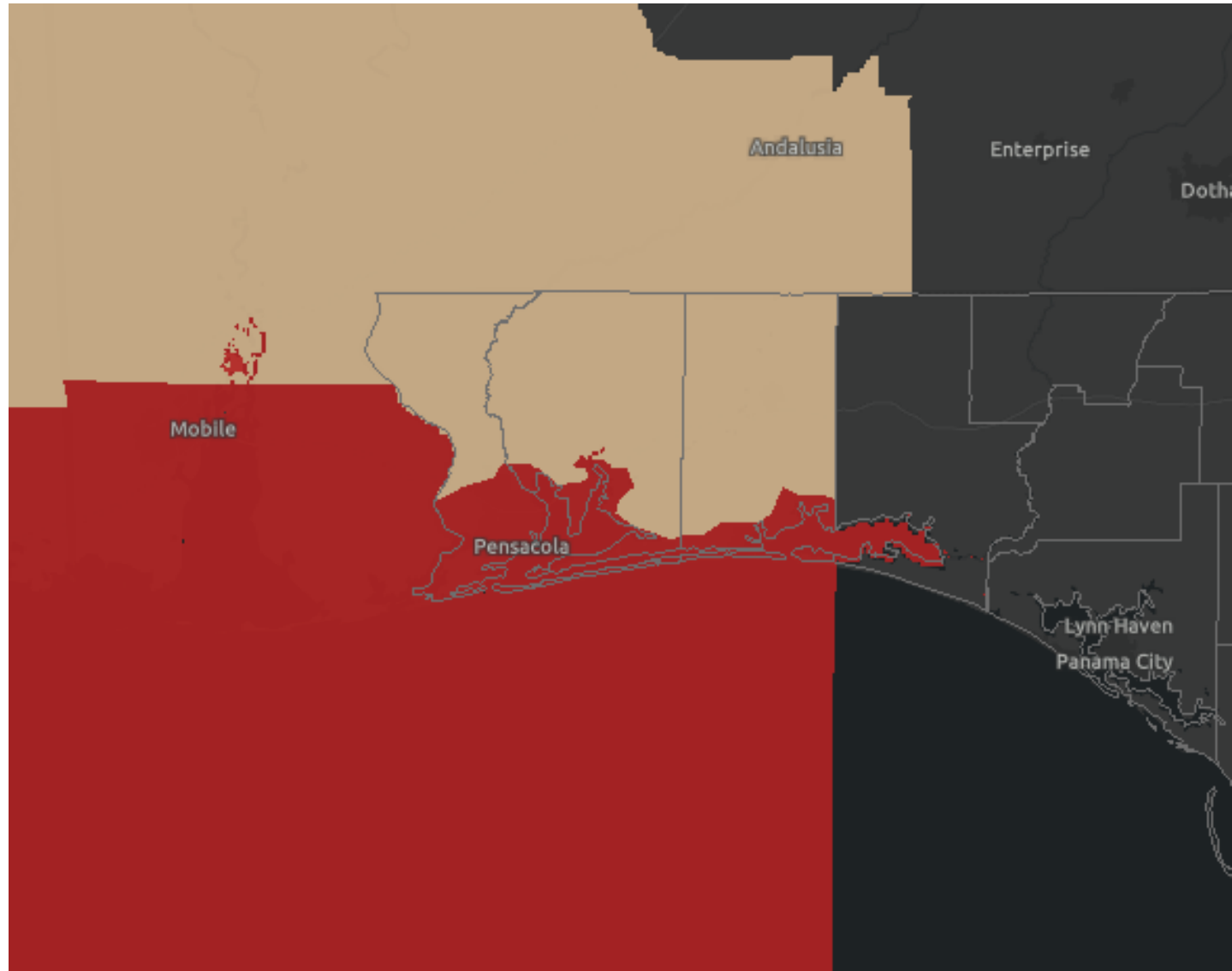


# Wind Watches and Warnings

In Effect Until Further Notice

**Tropical Storm Warnings** are in effect for coastal parts of Escambia, Santa Rosa, and Okaloosa Counties.

**Wind Advisories** are in effect for the inland parts of Escambia, Santa Rosa, and Okaloosa Counties from 10 PM CT tonight until 1 AM CT Sunday





# Tropical Storm & Hurricanes

## Watches Versus Warnings

### ***WATCH***

Tropical storm and/or hurricane conditions are **POSSIBLE** in Watch area

Issued up to 48 hours in advance of tropical storm force winds

### ***WARNING***

Tropical storm and/or hurricane conditions are **EXPECTED** in Warning area

Issued up to 36 hours in advance of onset of tropical storm force winds

Hurricane preparedness activities become difficult once winds reach tropical storm force. **Watches & Warnings are issued in advance of onset of tropical storm force winds, 39-73mph**



NWSMobile



[weather.gov/mob](https://weather.gov/mob)



# Forecast Maximum Wind Gusts

## Saturday and Sunday



### Maximum Wind Gusts: Saturday

Created by FDEM State Meteorological Support Unit || Data from NWS, US Census Bureau, Natural Earth



### Maximum Wind Gusts: Sunday

Created by FDEM State Meteorological Support Unit || Data from NWS, US Census Bureau, Natural Earth



Wind gusts of 35-45 mph are possible in the western Panhandle on Saturday, but sustained tropical storm force winds appear unlikely. Wind gusts elsewhere will generally be around 20-30 mph.





# Overall Summary

## Florida Outlook:

### **Potential Tropical Cyclone #3**

- In order to issue Tropical Storm Warnings for parts of the Gulf Coast, the National Hurricane Center has designated Invest 92L in the southwestern Gulf of Mexico as Potential Tropical Cyclone #3.
- PTC #3 is located about 385 miles south-southwest of Pensacola, moving north at 14 mph.
- Maximum sustained winds are near 35 mph. Some additional strengthening is expected prior to landfall, and PTC #3 will likely become a tropical or subtropical storm today before landfall.
- On the forecast track, the system will approach the Gulf Coast tonight or early Saturday, making landfall in southeastern Louisiana. A slow northeastward motion across the southeastern United States is likely after landfall through the weekend.
- With this system being lopsided, most of the impacts will be on the eastern side, which could bring heavy rainfall to the Panhandle even with a landfall in Louisiana.
- 4-8" of rain (locally 10"+) is expected in the Panhandle, with 2-4" of rain expected in the Big Bend by Monday.
- Flash Flood Watches are in effect for the entire Florida Panhandle west of the Apalachicola River. Flash flooding will become likely if bands of heavy rainfall affect the same locations. There is a Moderate Risk of flash flooding (level 3 of 4) for the western Panhandle on Saturday.
- A low-end tornado threat is possible in the Panhandle on Saturday, and the Storm Prediction Center has outlined these areas in a Marginal Risk of isolated tornadoes (level 1 of 5). The tornado threat could also extend into Sunday.
- Storm surge may produce tides of 1-3 feet above normal in the Panhandle. High Surf Advisories and Warnings are in effect for the beaches from Escambia through Gulf County. Dangerous rip currents and high surf are expected along Gulf Coast beaches by the end of the week and through the weekend.
- The next name on the list is Claudette (klaw-DET).

The next briefing packet will be issued this afternoon. For the latest information on the tropics, please visit the National Hurricane Center website at [www.hurricanes.gov](http://www.hurricanes.gov).



# TROPICAL UPDATE



Created by:

Amy Godsey, Chief State Meteorologist

[Amy.Godsey@em.myflorida.com](mailto:Amy.Godsey@em.myflorida.com)

Cameron Young, Assistant State Meteorologist

[Cameron.Young@em.myflorida.com](mailto:Cameron.Young@em.myflorida.com)

State Meteorological Support Unit

Florida Division of Emergency Management

Users wishing to subscribe (approval pending) to this distribution list, register at:

[https://public.govdelivery.com/accounts/FLDEM/subscriber/new?topic\\_id=SERT\\_Met\\_Tropics](https://public.govdelivery.com/accounts/FLDEM/subscriber/new?topic_id=SERT_Met_Tropics).

Other reports available for subscription are available at:

<https://public.govdelivery.com/accounts/FLDEM/subscriber/new?preferences=true>