



# TROPICAL UPDATE



9:00 AM EDT

Wednesday, June 16, 2021

Bay of Campeche Low – Invest 92L (90%)

This update is intended for government and emergency response officials, and is provided for informational and situational awareness purposes only. Forecast conditions are subject to change based on a variety of environmental factors. For additional information, or for any life safety concerns with an active weather event please contact your County Emergency Management or Public Safety Office, local National Weather Service forecast office, or visit the National Hurricane Center website at [www.hurricanes.gov](http://www.hurricanes.gov).



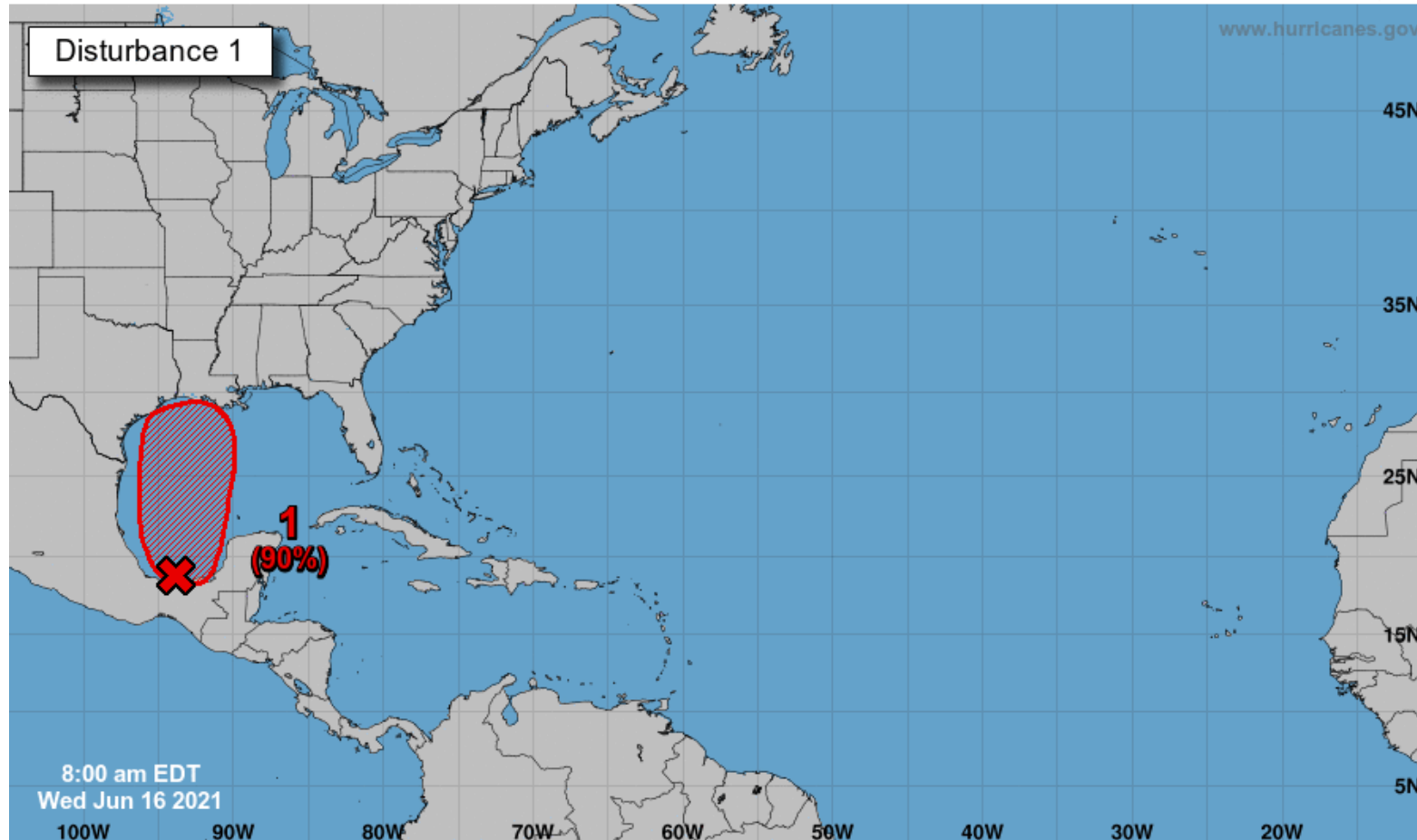
# Tropical Weather Outlook

Possible Area of Development During the Next 5 Days ([LINK](#))



## Five-Day Graphical Tropical Weather Outlook

National Hurricane Center Miami, Florida



Disorganized showers and thunderstorms continue over the Bay of Campeche and southern Mexico in association with a broad low pressure area. This system will move little today and tonight, and little if any development is expected during that time due to interaction with land. However, the broad disturbance should begin to move northward on Thursday, and a tropical depression is likely to form by late Thursday or on Friday when the low moves across the western Gulf of Mexico.

***Regardless of development, heavy rains could begin to impact portions of the northern Gulf Coast (including the Panhandle) through the weekend.***

**\*Formation chance through 48 hours...high...70%**

**\*Formation chance through 5 days...high...90%**

Current Disturbances and Five-Day Cyclone Formation Chance:   
 Tropical or Sub-Tropical Cyclone:   
    < 40%    40-60%    > 60%   
    Depression    Storm    Hurricane   
    Post-Tropical Cyclone or Remnants



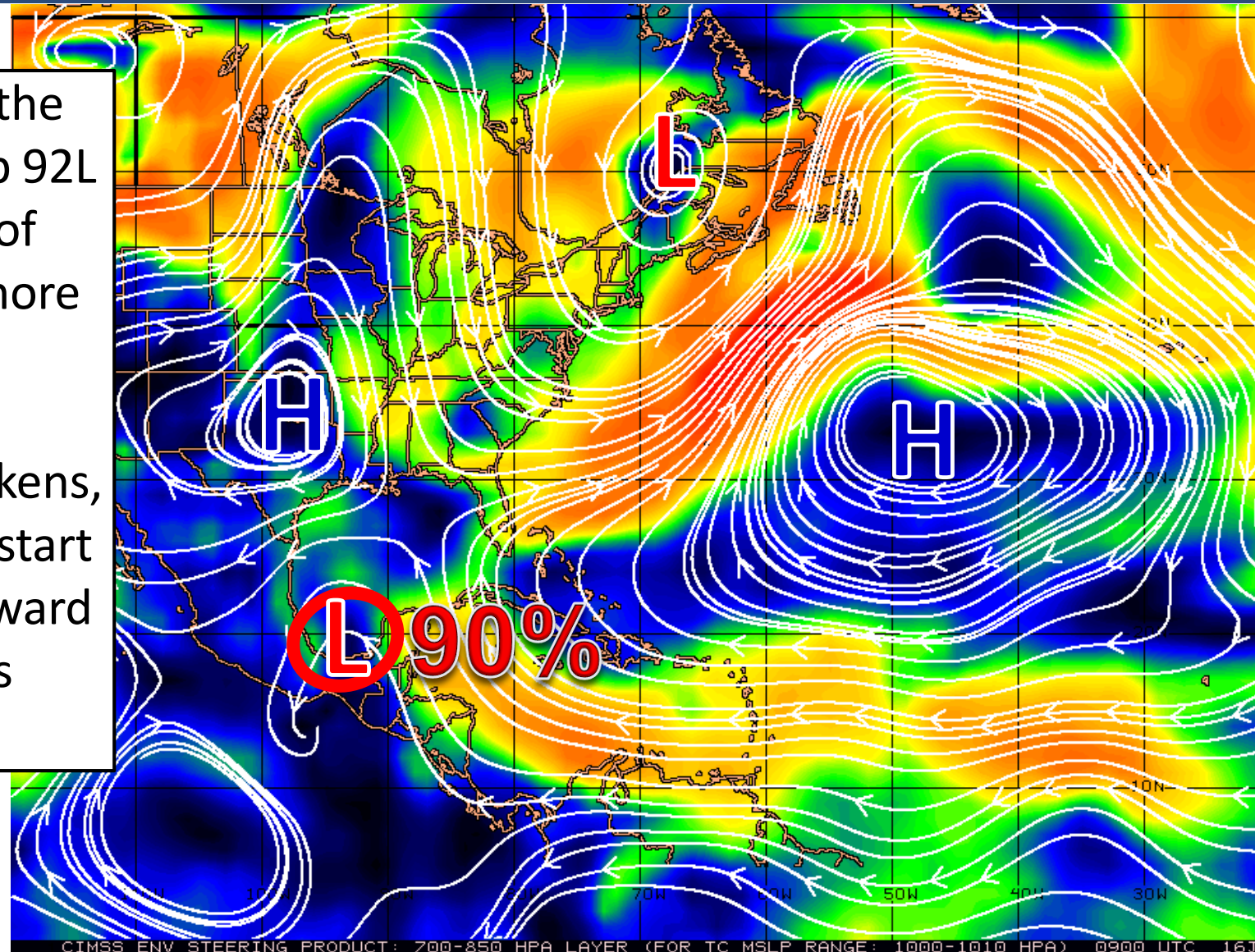
# Steering Currents

What is Moving the System?

Color denotes the movement speed through the atmosphere and thin white lines denote direction. Tightly clustered white lines represent faster movement as well.

High pressure over the southern US will keep 92L pinned in the Bay of Campeche for one more day.

As high pressure weakens, this will allow 92L to start moving slowly northward Thursday into this weekend.



KTS

100

70

50

30

20

15

10

5

0

Fast Moving Storm

Fast Moving Storm

Typical Moving Storm

Slow Moving Storm

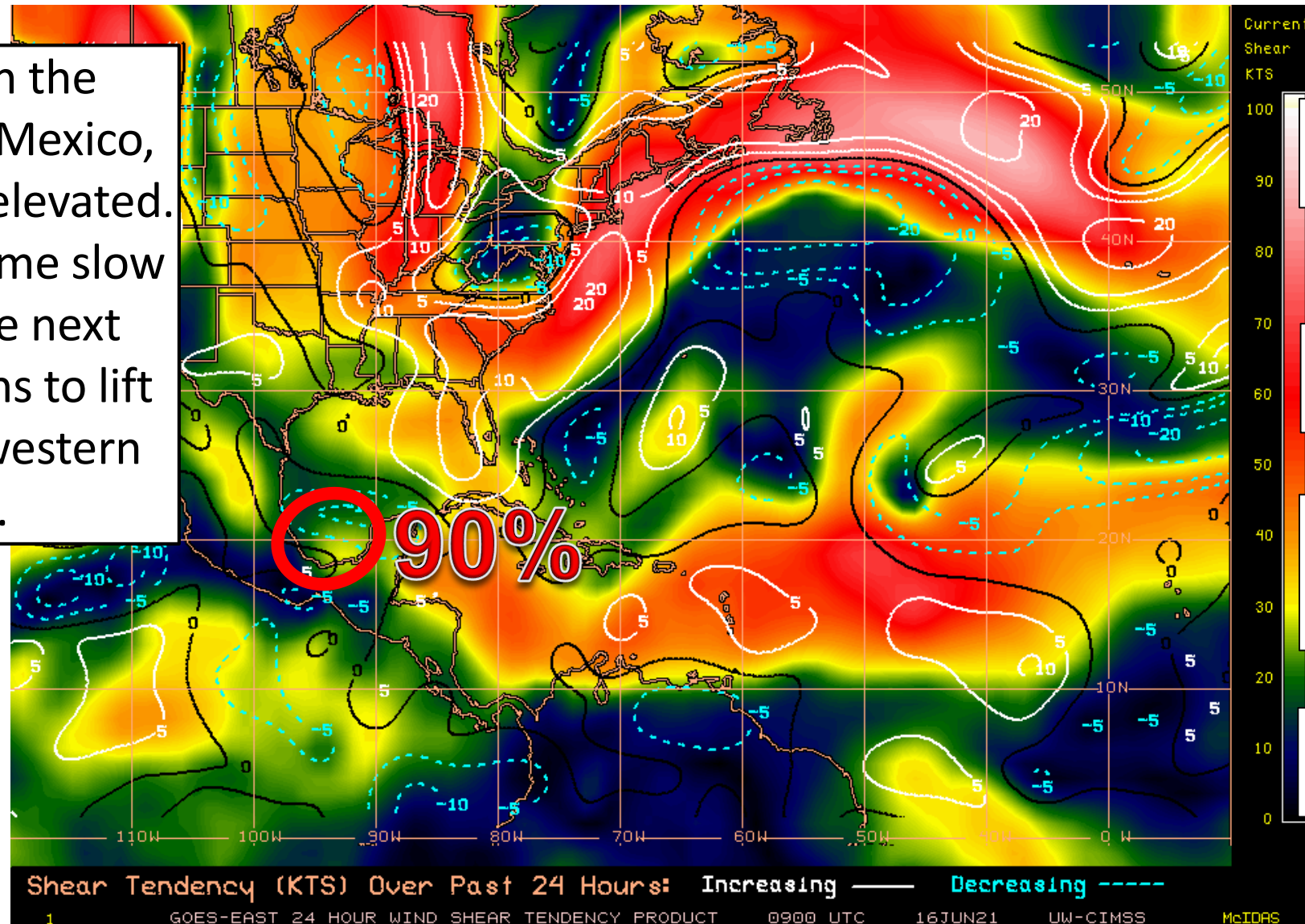


# Wind Shear

Is the environment favorable for the system?

Color denotes the amount of wind shear and the lines denote how it have changed over the last 24 hours (dotted lines show decreasing shear and solid lines show increasing).

Shear is lessening in the southwestern Gulf of Mexico, though it still remains elevated. This could allow for some slow organization over the next couple days as it begins to lift northward over the western Gulf of Mexico.



HIGH Shear  
(Unfavorable)

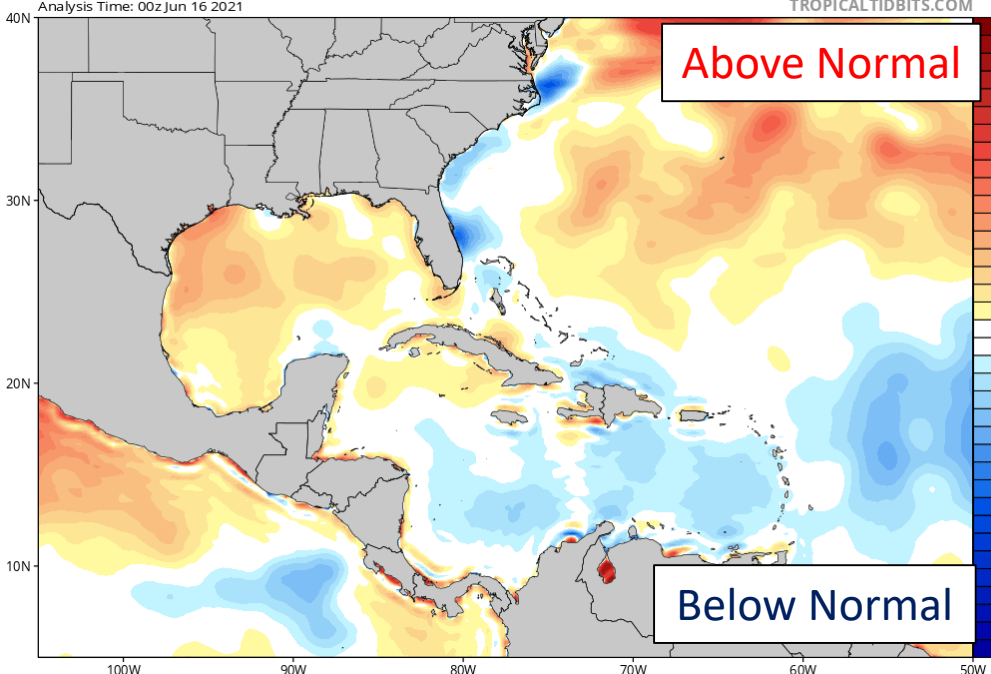
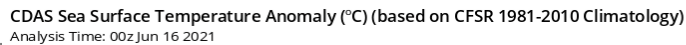
HIGH Shear  
(Unfavorable)

MODERATE  
Shear  
(Neutral)

LOW Shear  
(Favorable)



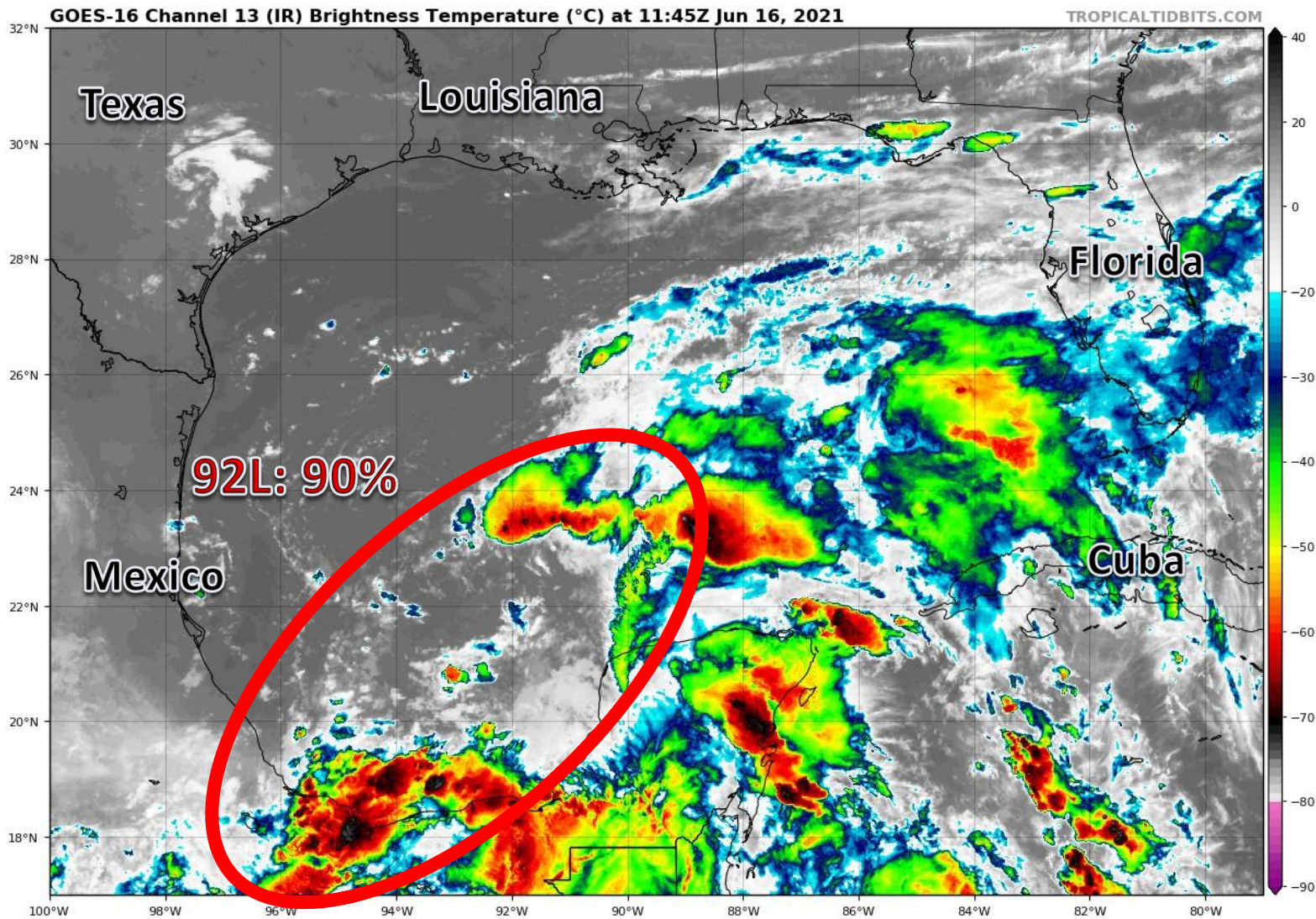
Water temperatures are warm enough to support tropical development in the Gulf of Mexico and are running slightly above normal for this time of year.



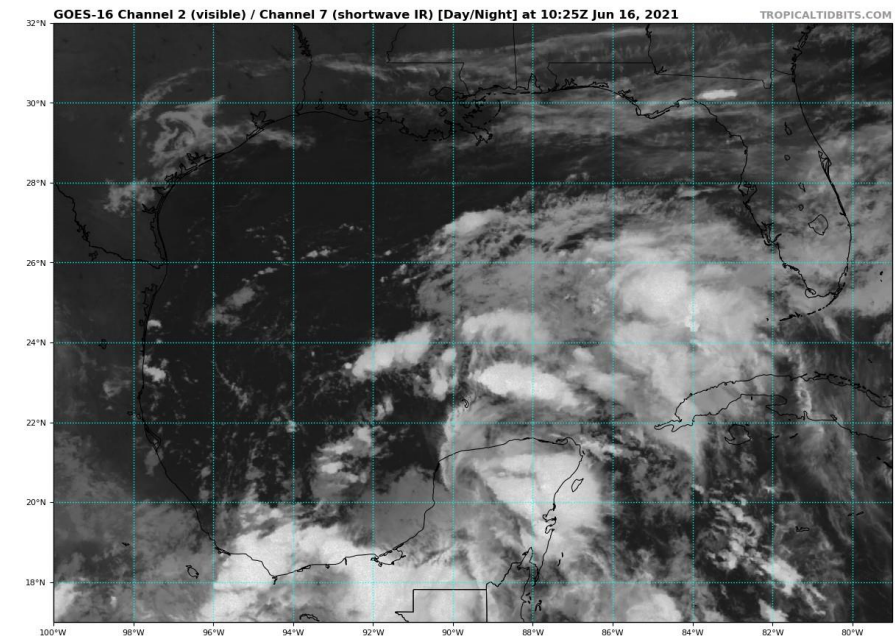


# Satellite Imagery

## Gulf of Mexico – Invest 92L



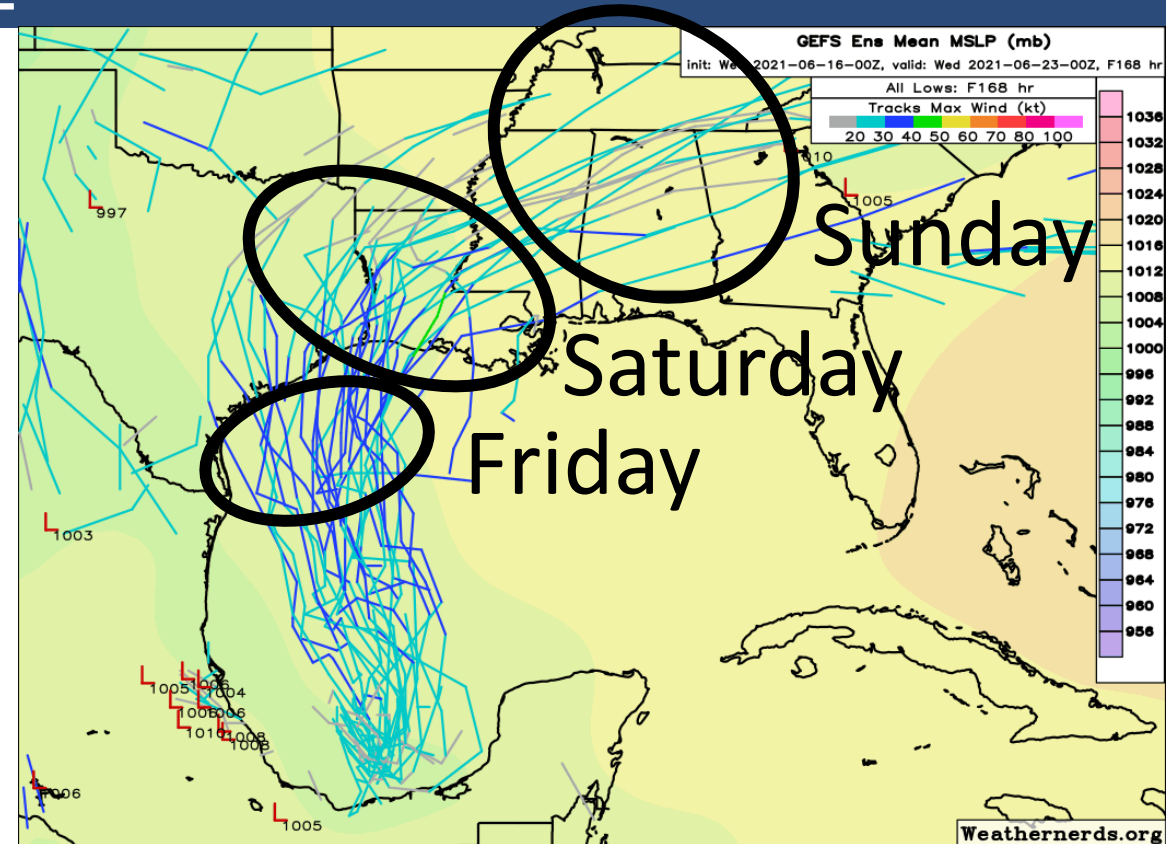
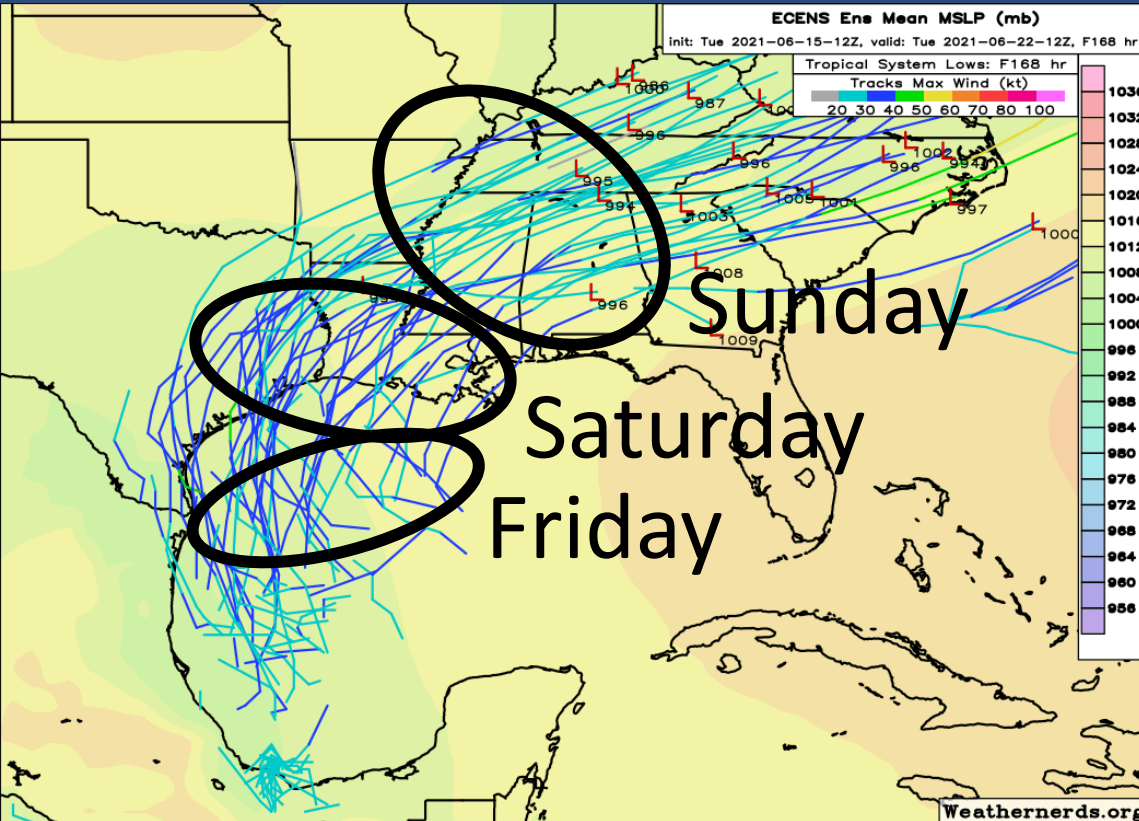
92L remains elongated with multiple areas for thunderstorms. Large systems like these are slow to organize. Little if any development is expected today, but as it moves away from land tomorrow, some slow development will be possible.





# Model Forecast Tracks Next 5 Days

## Ensemble Models – Invest 92L



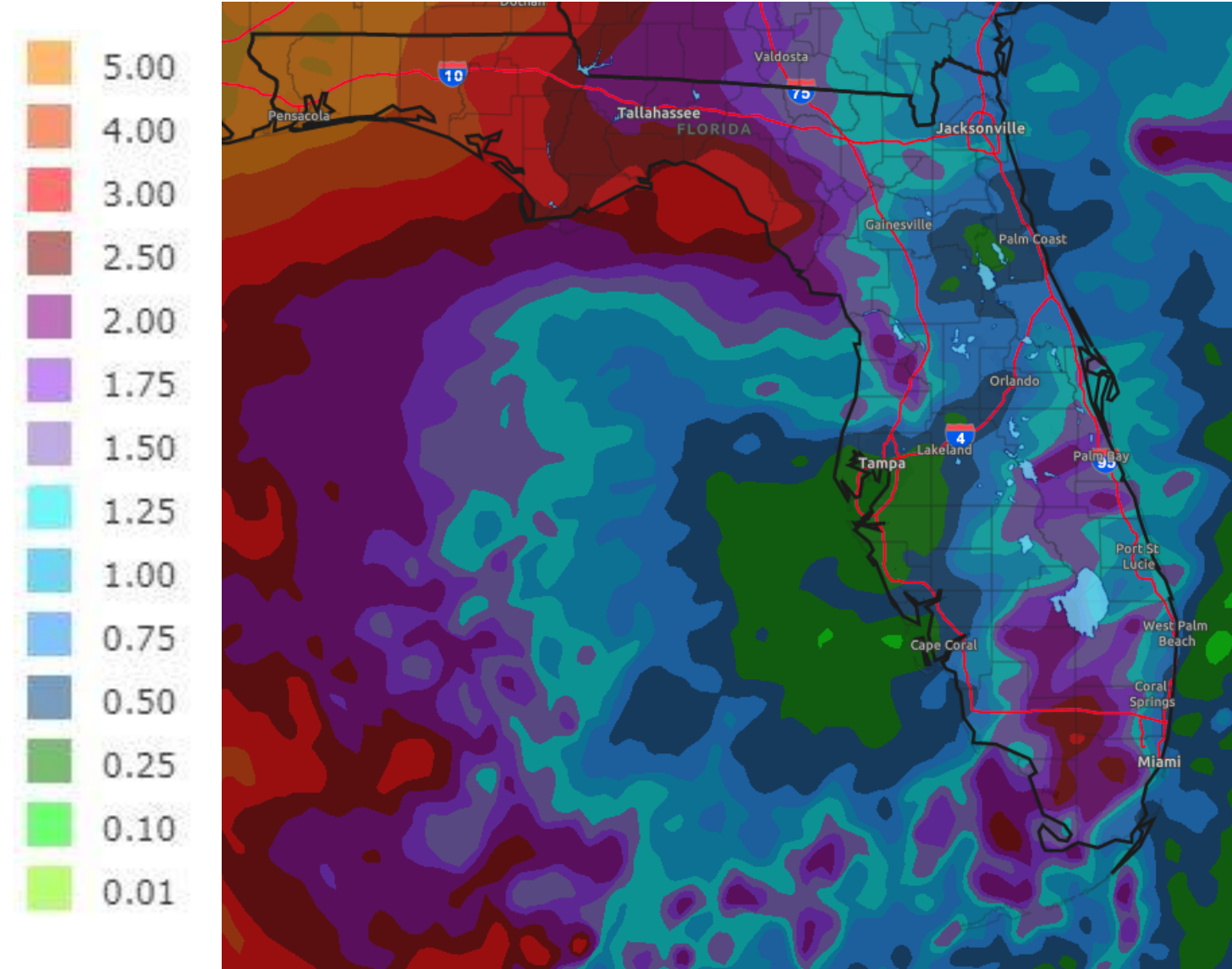
Model guidance is in agreement about the system meandering in the southwestern Gulf of Mexico until Thursday. Then, by the weekend, there is **significant model uncertainty** across the western Gulf of Mexico as the system begins to move northward toward Texas and Louisiana.

Regardless of development, this system will likely be lopsided with most of the rainfall being (well) east of the center. Heavy rainfall is possible in the Panhandle even with “the center of the storm” tracking into western Louisiana.



# Rainfall Totals Next 7 Days

Ending 8 AM ET Wednesday



A widespread 4-6" of rain is currently forecast across the Panhandle over the next 7 days—a majority of which is associated with the system that develops in the western Gulf of Mexico late in the week. Locally higher totals are possible.

**These rainfall totals are highly dependent on the track and organization of the system, both of which are unknown at this time.**

The rainfall across the Peninsula is associated with thunderstorms over the next few days and is not related to the tropical system.

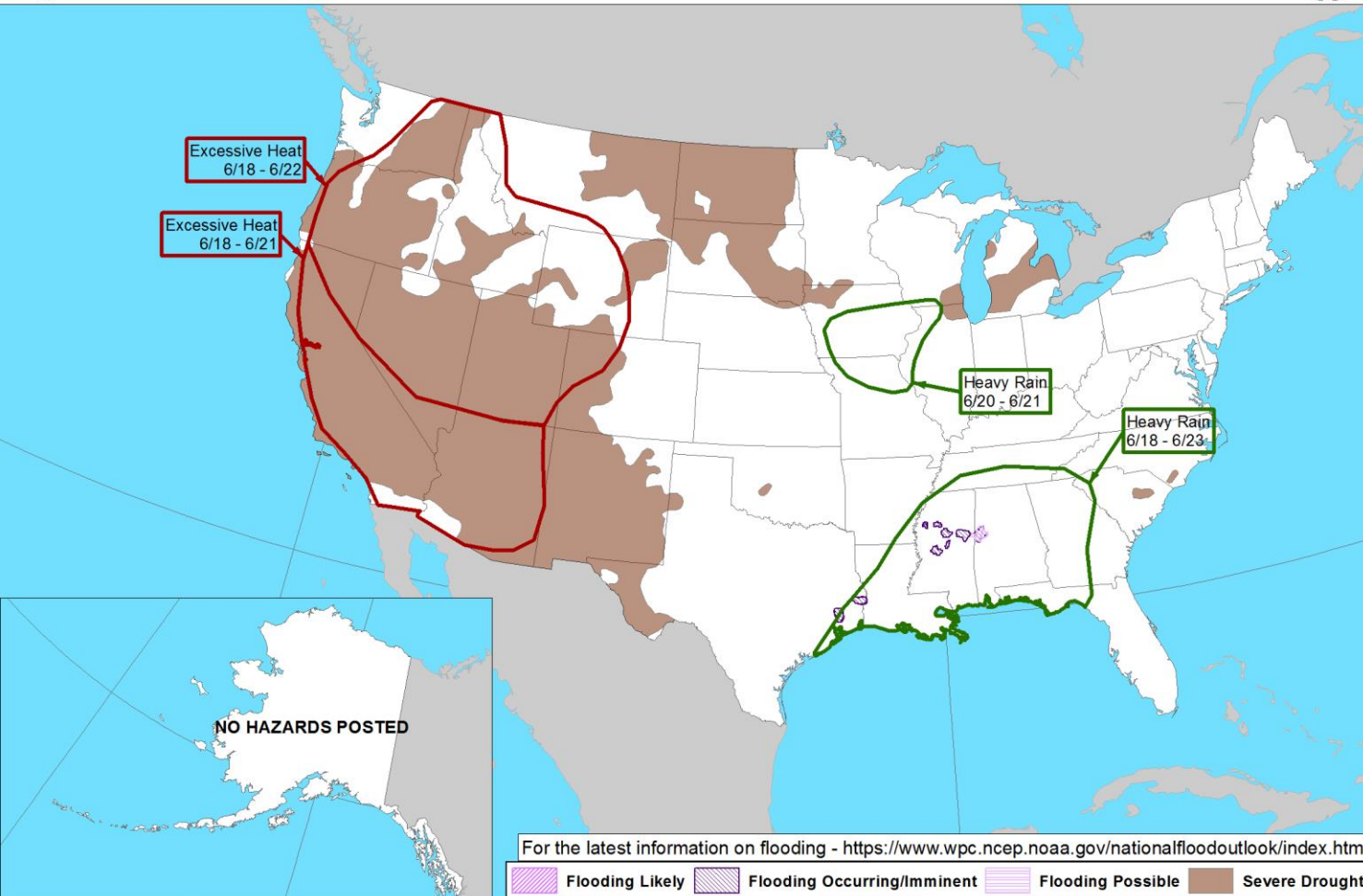


# Hazard Outlook

From the [Weather Prediction Center](#)



Day 3-7 U.S. Hazards Outlook  
Valid: 06/18/2021-06/22/2021



Locally heavy rainfall is possible this weekend across the Panhandle and western Big Bend, depending on the track of the possible tropical system.



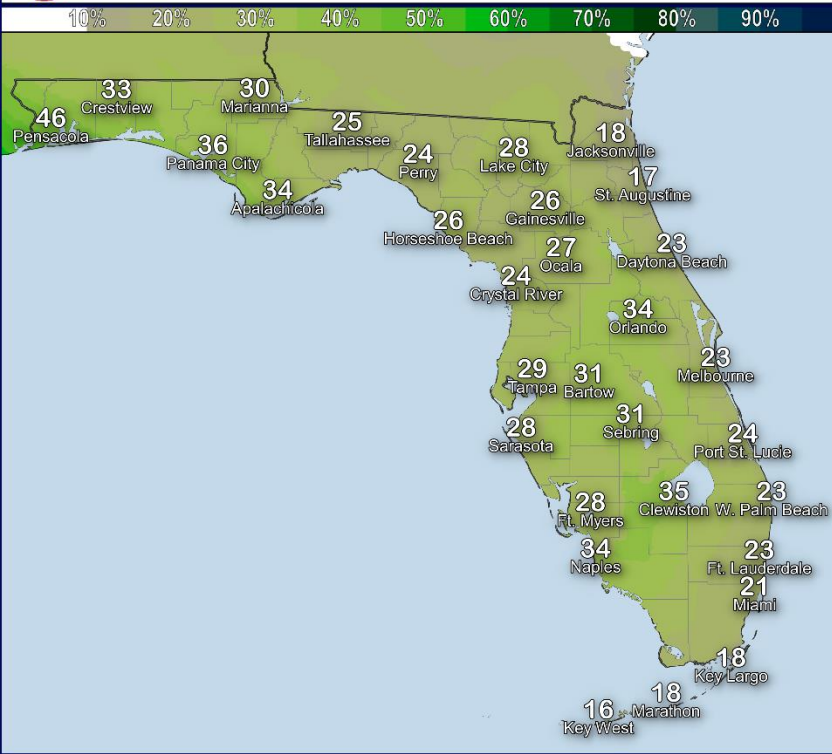
# Forecast Rain Chances

## Friday through Sunday – Invest 95L



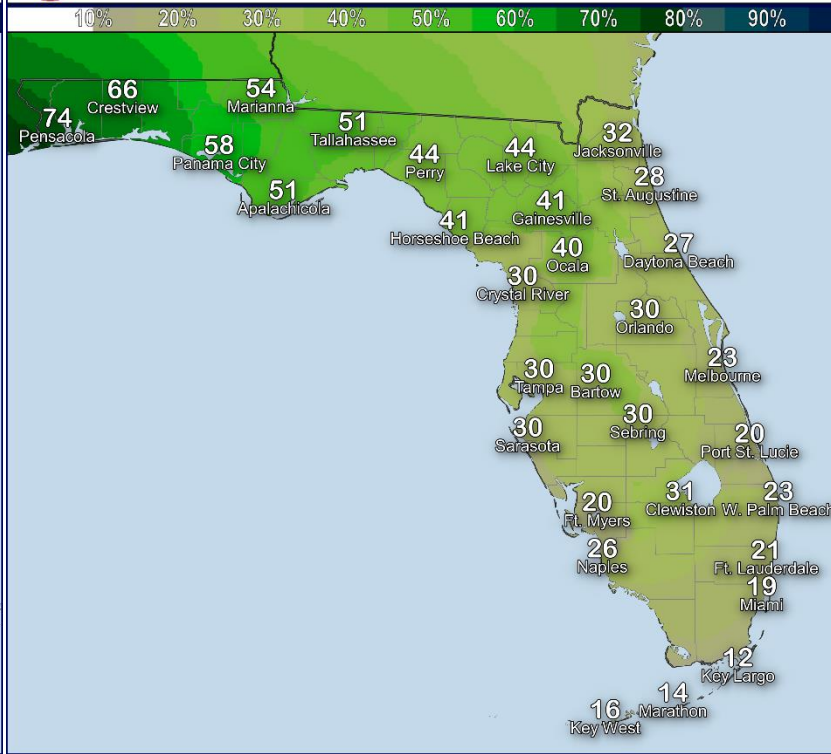
### Chance of Rain: Friday

Created by FDEM State Meteorological Support Unit || Data from NWS, US Census Bureau, Natural Earth



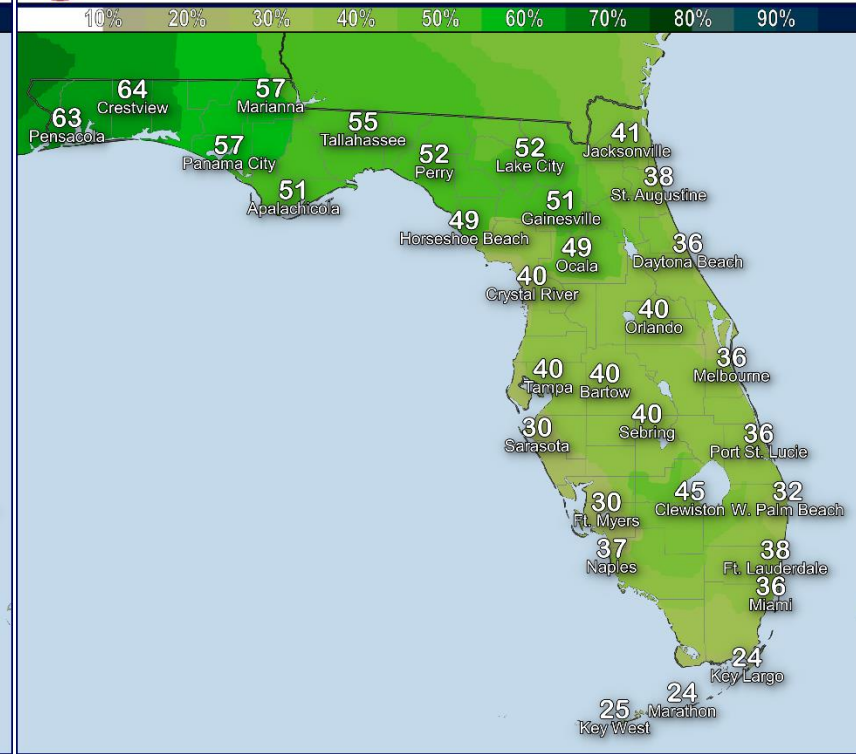
### Chance of Rain: Saturday

Created by FDEM State Meteorological Support Unit || Data from NWS, US Census Bureau, Natural Earth



### Chance of Rain: Sunday

Created by FDEM State Meteorological Support Unit || Data from NWS, US Census Bureau, Natural Earth

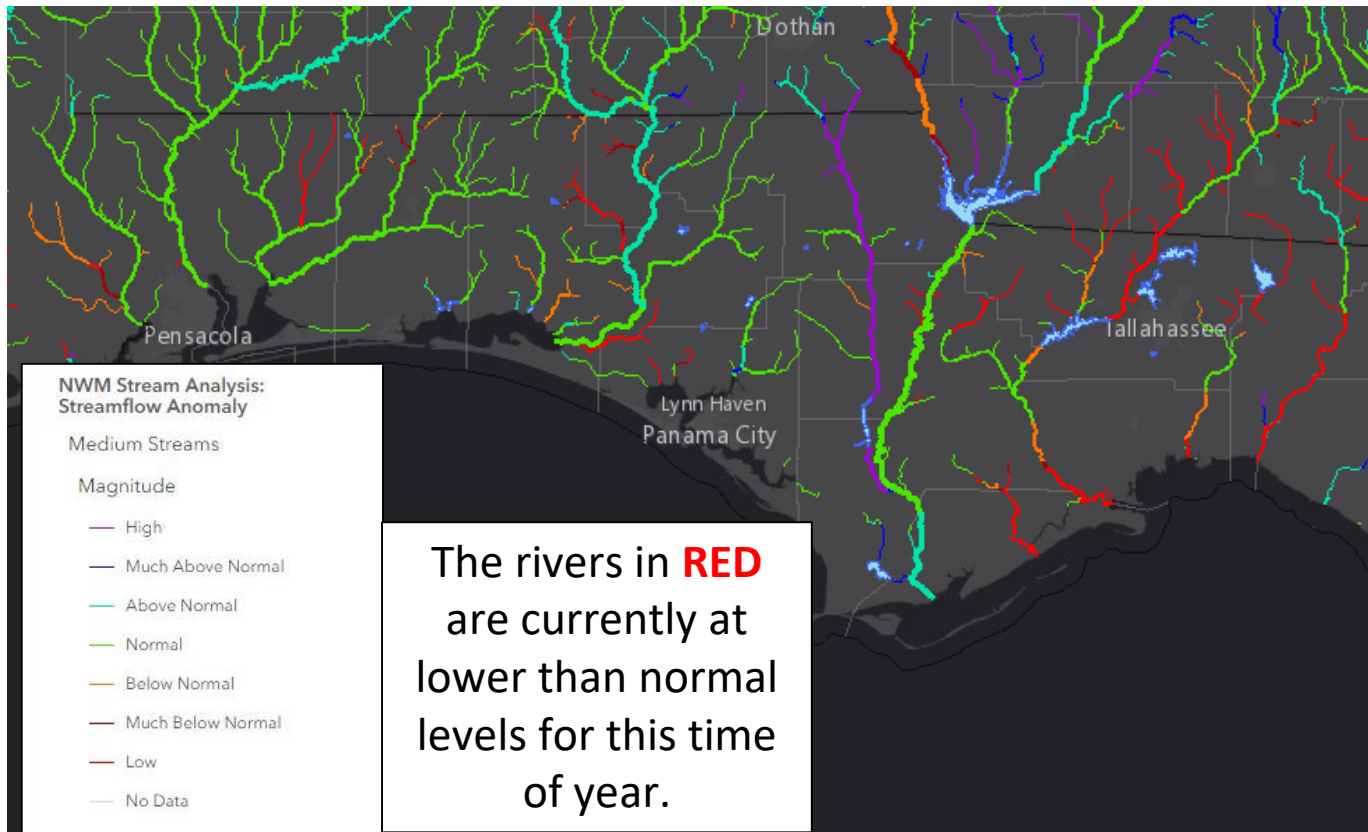


Rain chances will begin increasing Friday in the western Panhandle and continue increasing into this weekend across the Panhandle and Big Bend. Locally heavy rainfall will be the primary threat. While a low-end isolated tornado threat may exist for the Panhandle, it remains too early to give details.

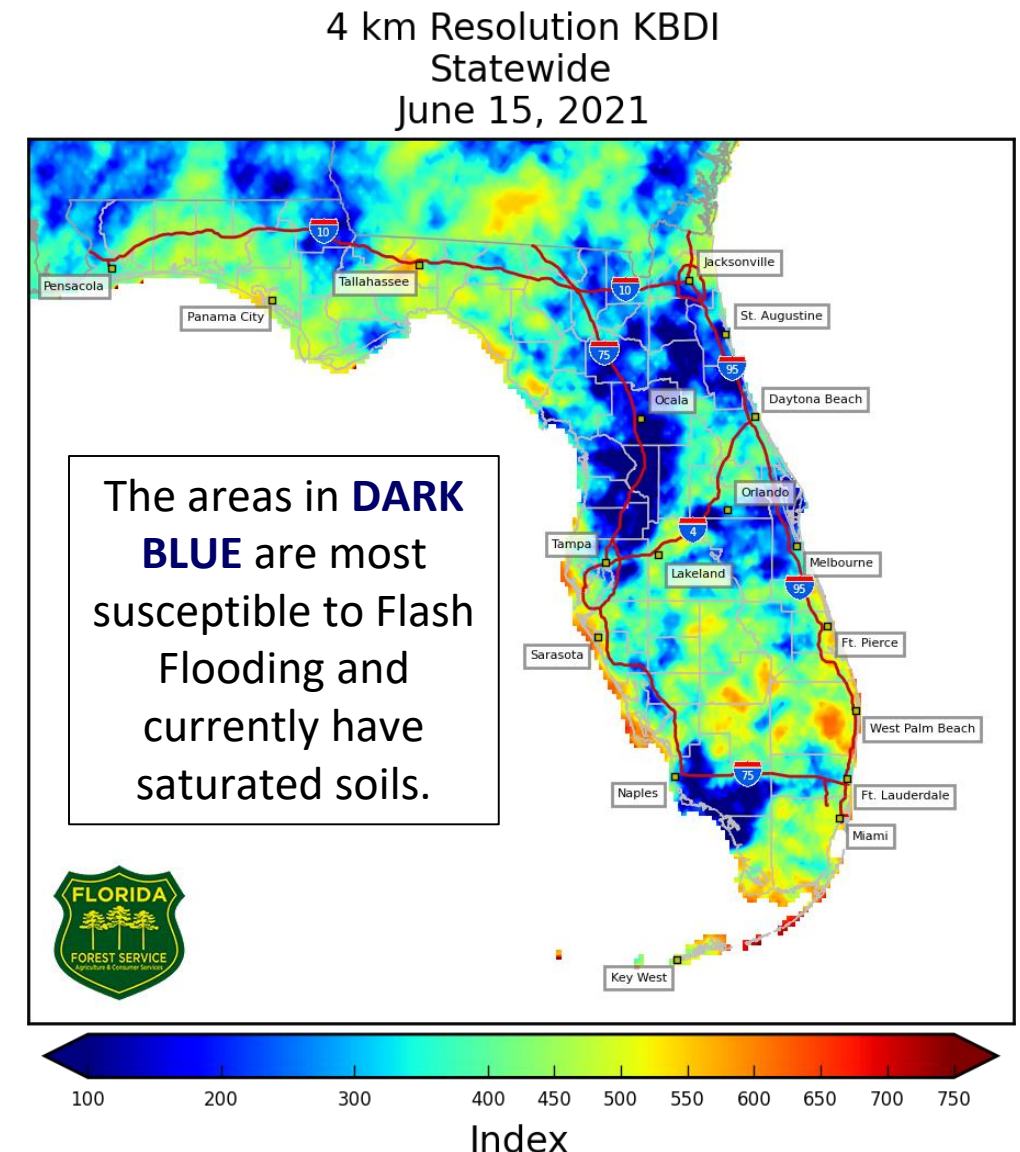


# Streamflow Anomaly – Soil Moisture

KB Drought Index – [Full Report from the Florida Forest Service](#)



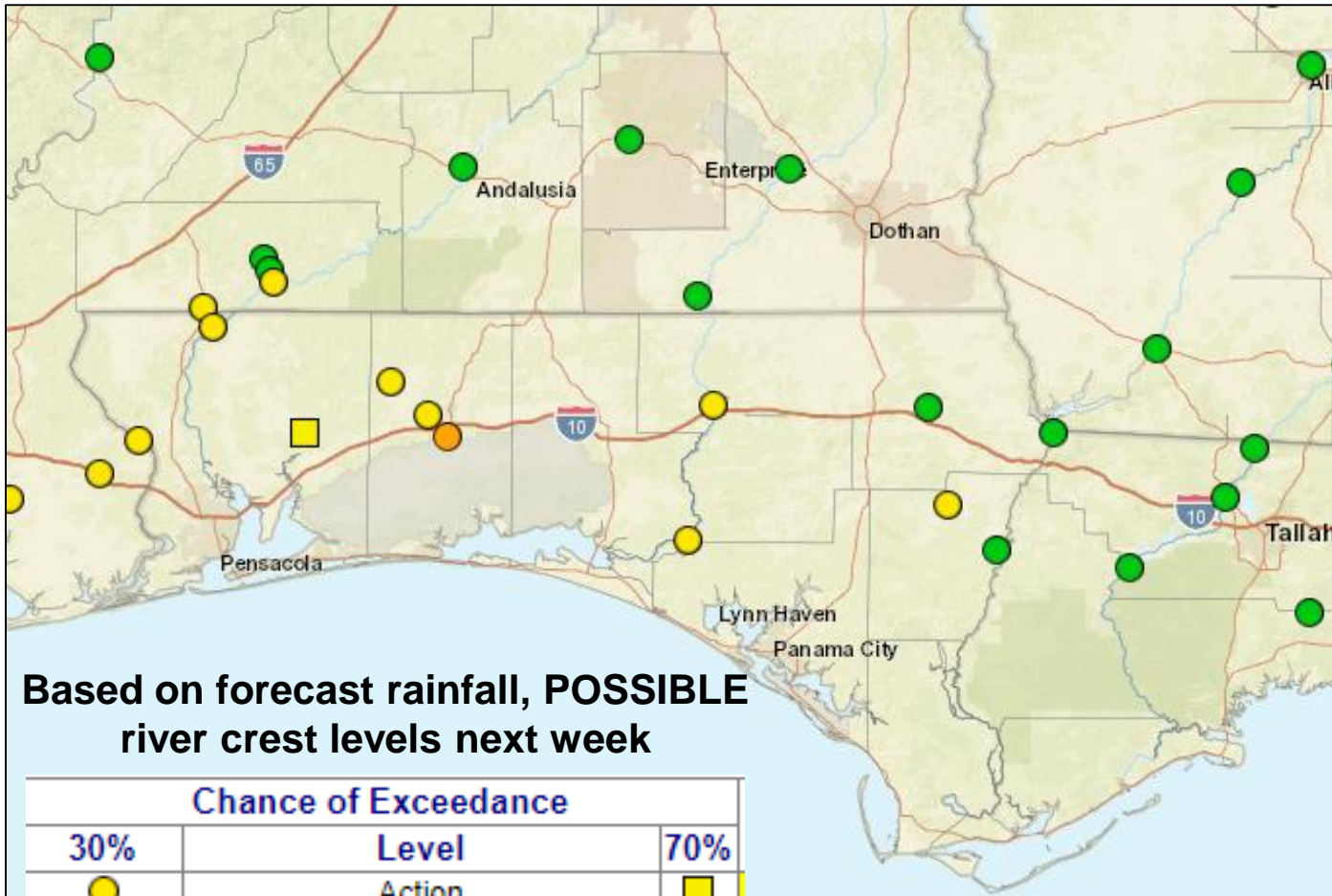
Streamflows along many Panhandle rivers are running near to below normal. This is due to recent dry weather across the Panhandle where KBDI values are largely between 350 and 550. The Choctawhatchee and Chipola Rivers are most susceptible as they are running above normal.





# Possible River Flooding

Chance of River Flooding Based on Range of Forecasted Rainfall



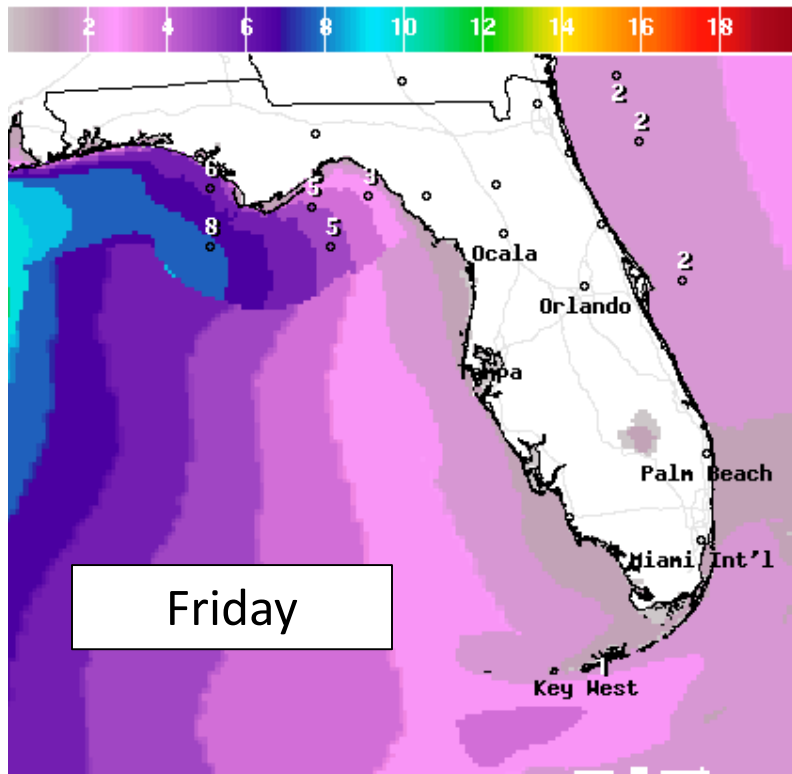
With the recent dry weather, rivers are running below normal. This will help mitigate any significant river flooding.

It will likely take over 6" of rain to result in minor river flooding in the Panhandle.



# Forecast Wave Heights

## Friday through Sunday



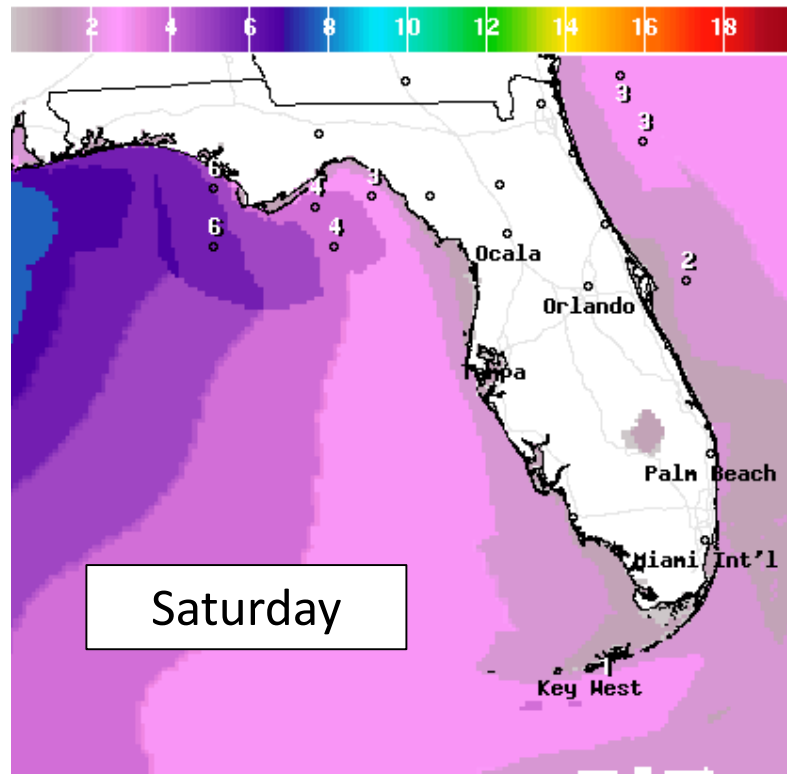
Wave Height(ft) Ending Fri Jun 18 2021 8PM EDT  
(Sat Jun 19 2021 00Z)



National Digital Forecast Database

11z issuance

Graphic created-Jun 16 7:33AM EDT



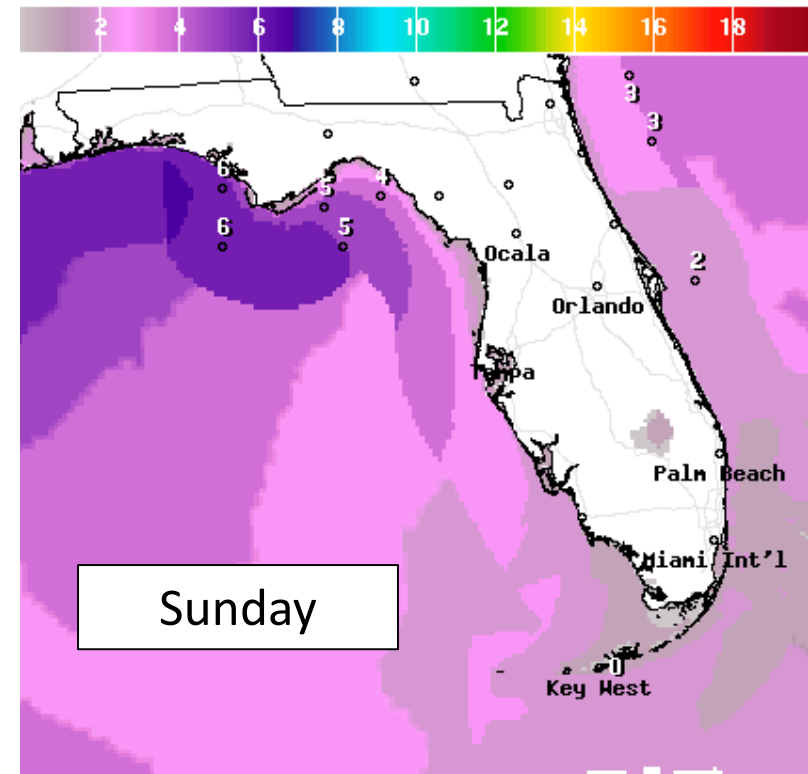
Wave Height(ft) Ending Sat Jun 19 2021 8PM EDT  
(Sun Jun 20 2021 00Z)



National Digital Forecast Database

07z issuance

Graphic created-Jun 16 3:36AM EDT



Wave Height(ft) Ending Sun Jun 20 2021 8PM EDT  
(Mon Jun 21 2021 00Z)



National Digital Forecast Database

07z issuance

Graphic created-Jun 16 3:37AM EDT



Surf will begin to build along the Panhandle beaches late Thursday into Friday and remain elevated through the weekend. Dangerous rip currents are likely along the Panhandle beaches. Some swells may affect the West Coast beaches late in the weekend, which could increase the rip current risk.



# Overall Summary

## Florida Outlook:

### **Bay of Campeche Low – Invest 92L**

- An area of disorganized, disturbed weather over the southwestern Gulf of Mexico will slowly meander today before moving northward across the western Gulf of Mexico Thursday-Saturday.
- This system may become better organized, and a tropical depression could form by Thursday or Friday in the southwestern Gulf of Mexico as the system moves northward.
- This weekend, the system will move inland and track Northeast across the southeastern United States.
- The National Hurricane Center gives this system a 70% (high) chance of formation during the next 48 hours and a 90% (high) chance of formation during the next 5 days.
- This system should be monitored for potential impacts in the Panhandle starting on Friday and continuing into the weekend.
- With this system likely being lopsided, most of the rainfall will be on the eastern side, which could bring heavy rainfall to the Panhandle even with a landfall in western Louisiana.
- Early forecasts call for a widespread 4-6" of rain in the Panhandle and 2-4" in the Big Bend. Locally higher amounts are possible.
- Significant river flooding is not expected, but isolated minor river flooding cannot be ruled out where heavier rainfall occurs.
- Dangerous rip currents are expected along Gulf Coast beaches by the end of the week and through the weekend.
- It remains too early to give specifics on any other impacts (wind, tornado, coastal flooding), but a significant wind and surge event is not anticipated at this time.
- The next name on the list is Claudette (klaw-DET).

The next briefing packet will be issued this afternoon. For the latest information on the tropics, please visit the National Hurricane Center website at [www.hurricanes.gov](http://www.hurricanes.gov).



# TROPICAL UPDATE



Created by:

Cameron Young, Assistant State Meteorologist

[Cameron.Young@em.myflorida.com](mailto:Cameron.Young@em.myflorida.com)

State Meteorological Support Unit

Florida Division of Emergency Management

Users wishing to subscribe (approval pending) to this distribution list, register at:

[https://public.govdelivery.com/accounts/FLDEM/subscriber/new?topic\\_id=SERT\\_Met\\_Tropics](https://public.govdelivery.com/accounts/FLDEM/subscriber/new?topic_id=SERT_Met_Tropics).

Other reports available for subscription are available at:

<https://public.govdelivery.com/accounts/FLDEM/subscriber/new?preferences=true>