



# TROPICAL UPDATE



4:00 PM EDT

Tuesday, June 15, 2021

Bay of Campeche Low – Invest 92L (80%)

This update is intended for government and emergency response officials, and is provided for informational and situational awareness purposes only. Forecast conditions are subject to change based on a variety of environmental factors. For additional information, or for any life safety concerns with an active weather event please contact your County Emergency Management or Public Safety Office, local National Weather Service forecast office, or visit the National Hurricane Center website at [www.hurricanes.gov](http://www.hurricanes.gov).



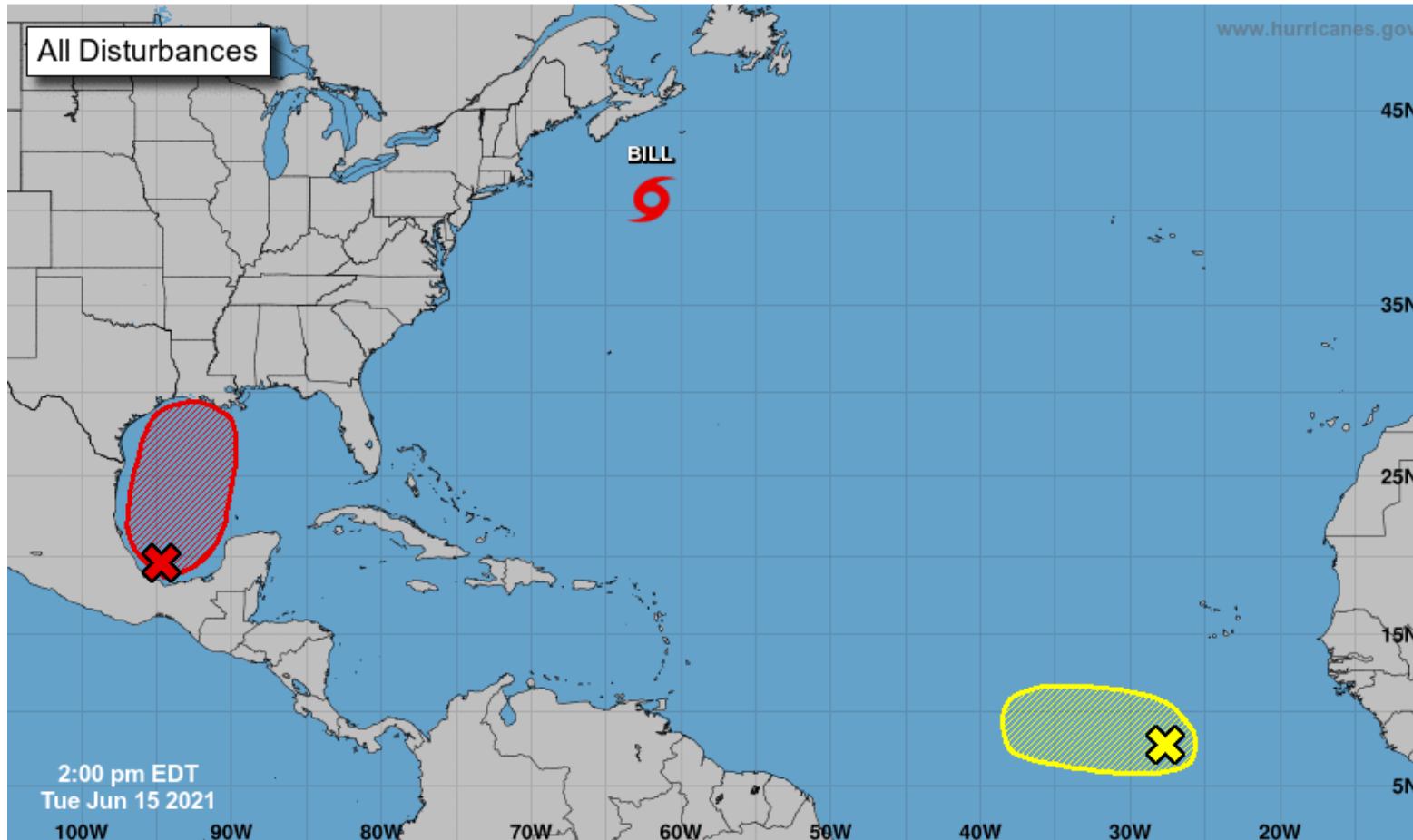
# 5-Day Tropical Weather Outlook

Possible Areas of Development During the Next 5 Days ([LINK](#))



## Five-Day Graphical Tropical Weather Outlook

National Hurricane Center Miami, Florida



Current Disturbances and Five-Day Cyclone Formation Chance: < 40% 40-60% > 60%  
Tropical or Sub-Tropical Cyclone: Depression Storm Hurricane  
 Post-Tropical Cyclone or Remnants



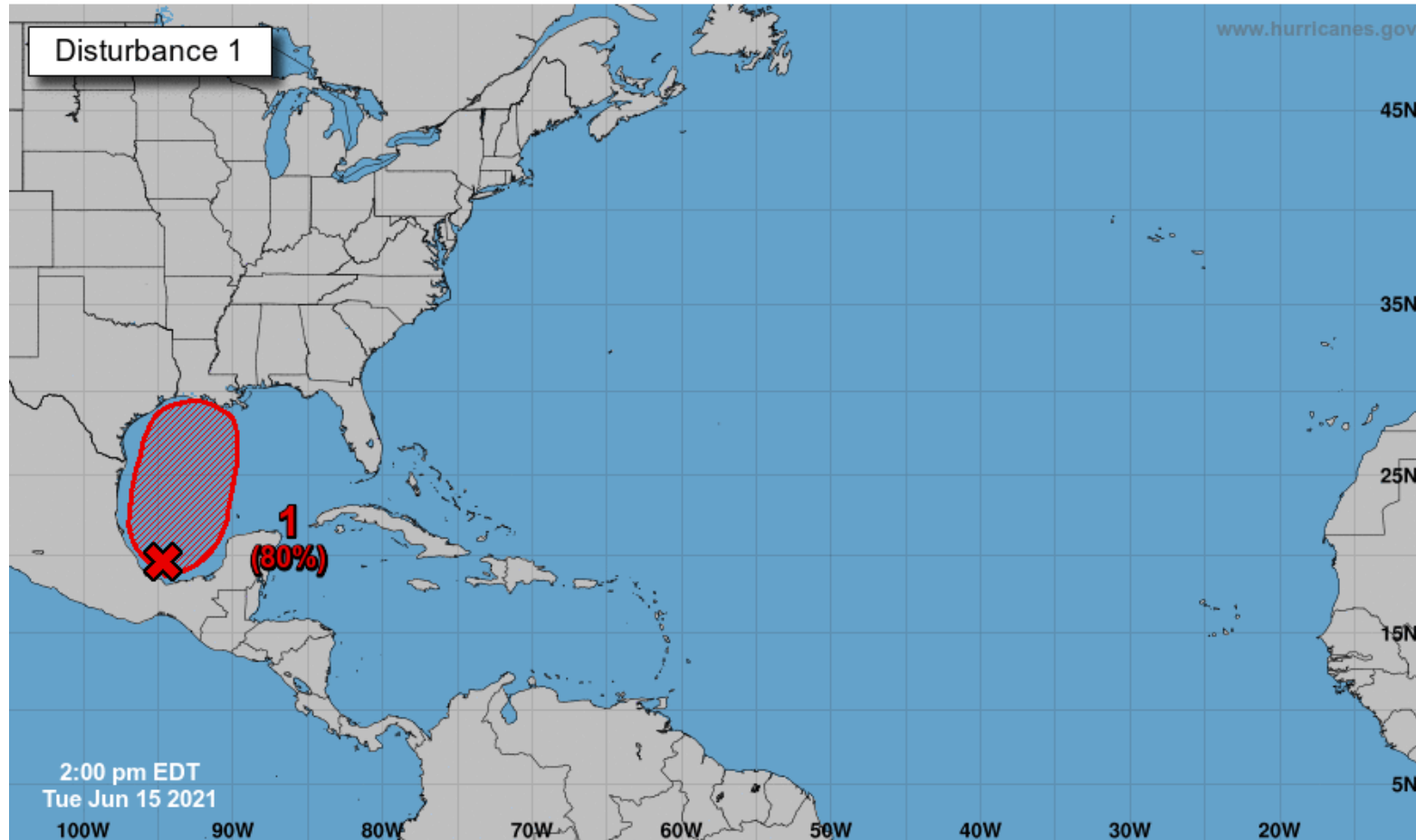
# Tropical Weather Outlook

Possible Area of Development During the Next 5 Days ([LINK](#))



## Five-Day Graphical Tropical Weather Outlook

National Hurricane Center Miami, Florida



Disorganized showers and thunderstorms continue over the Bay of Campeche and southern Mexico in association with a broad low pressure area. This system is expected to move little during the next day or two, and any development should be slow to occur during that time period due to its close proximity to land. However, the disturbance should begin to move northward by Thursday, and a tropical depression is likely to form late in the week when the low moves across the central and northwestern Gulf of Mexico.

***Regardless of development, heavy rains could begin to impact portions of the northern Gulf Coast (including the Panhandle) through the weekend.***

**\*Formation chance through 48 hours...medium...40%**

**\*Formation chance through 5 days...high...80%**

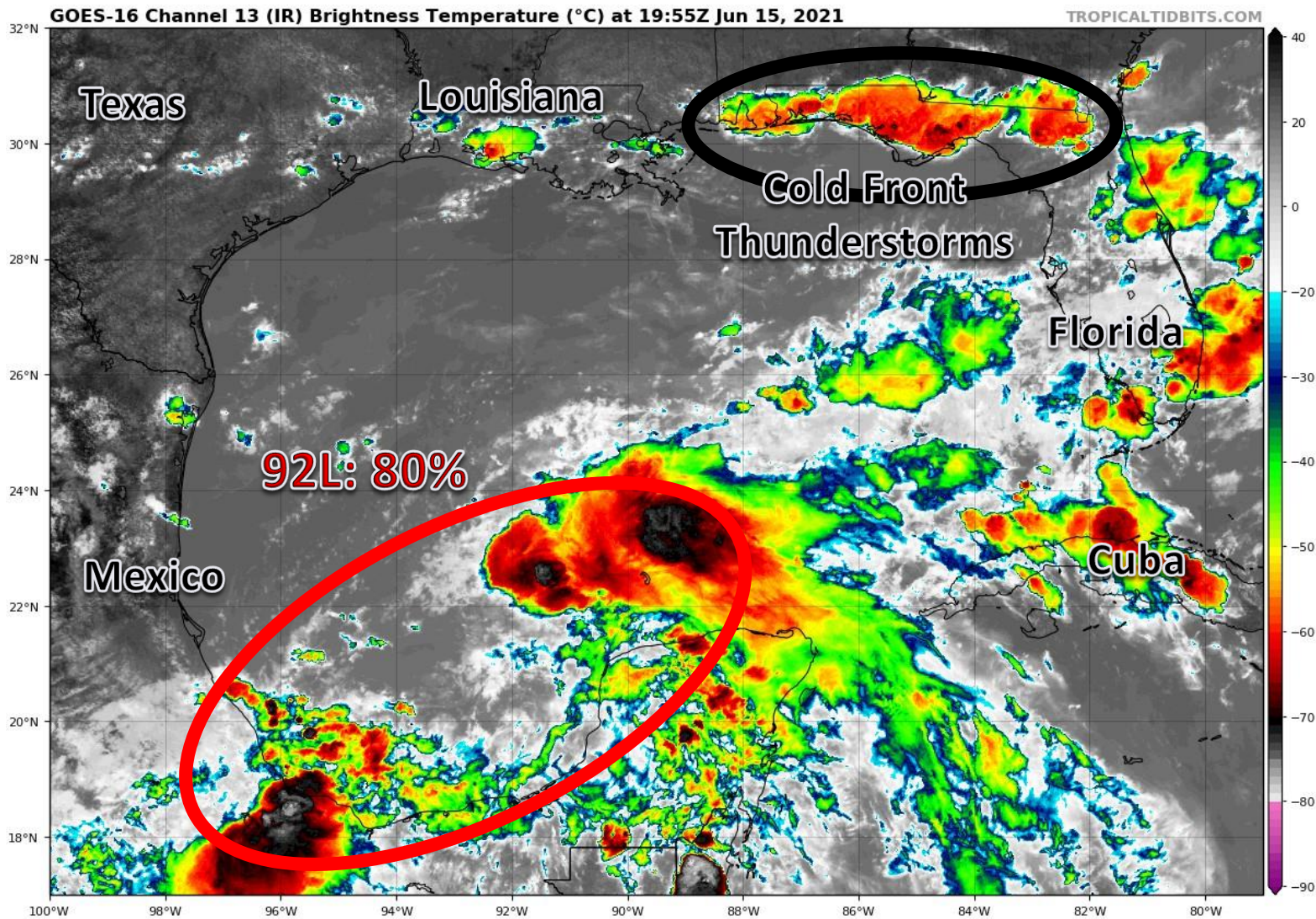
Current Disturbances and Five-Day Cyclone Formation Chance:   
 Tropical or Sub-Tropical Cyclone:   
    < 40%    40-60%    > 60%   
    Depression    Storm    Hurricane   
    Post-Tropical Cyclone or Remnants



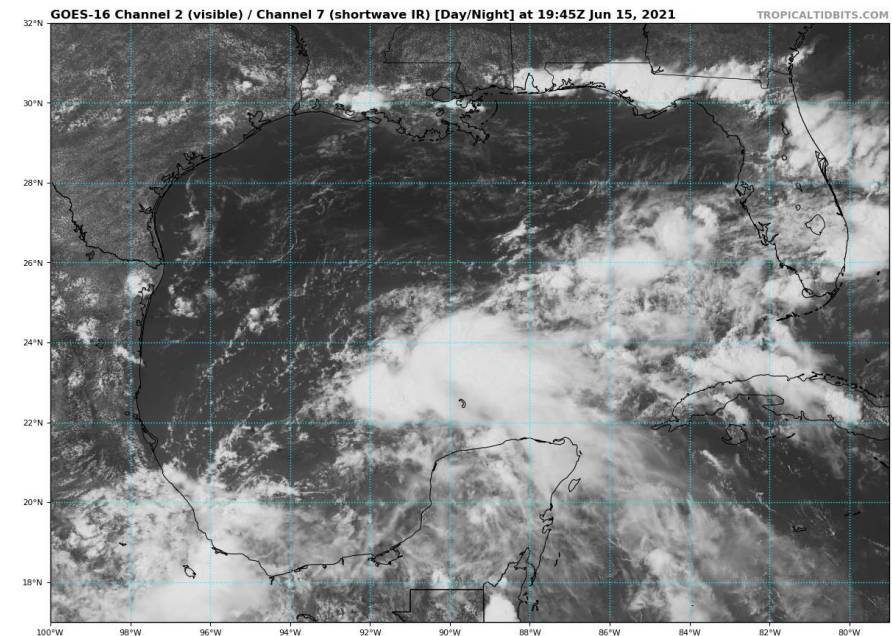


# Satellite Imagery

## Gulf of Mexico – Invest 92L



The system is currently disorganized with an elongated circulation and multiple areas of showers and thunderstorms. Development of this system will be slow to occur as it moves little tomorrow.



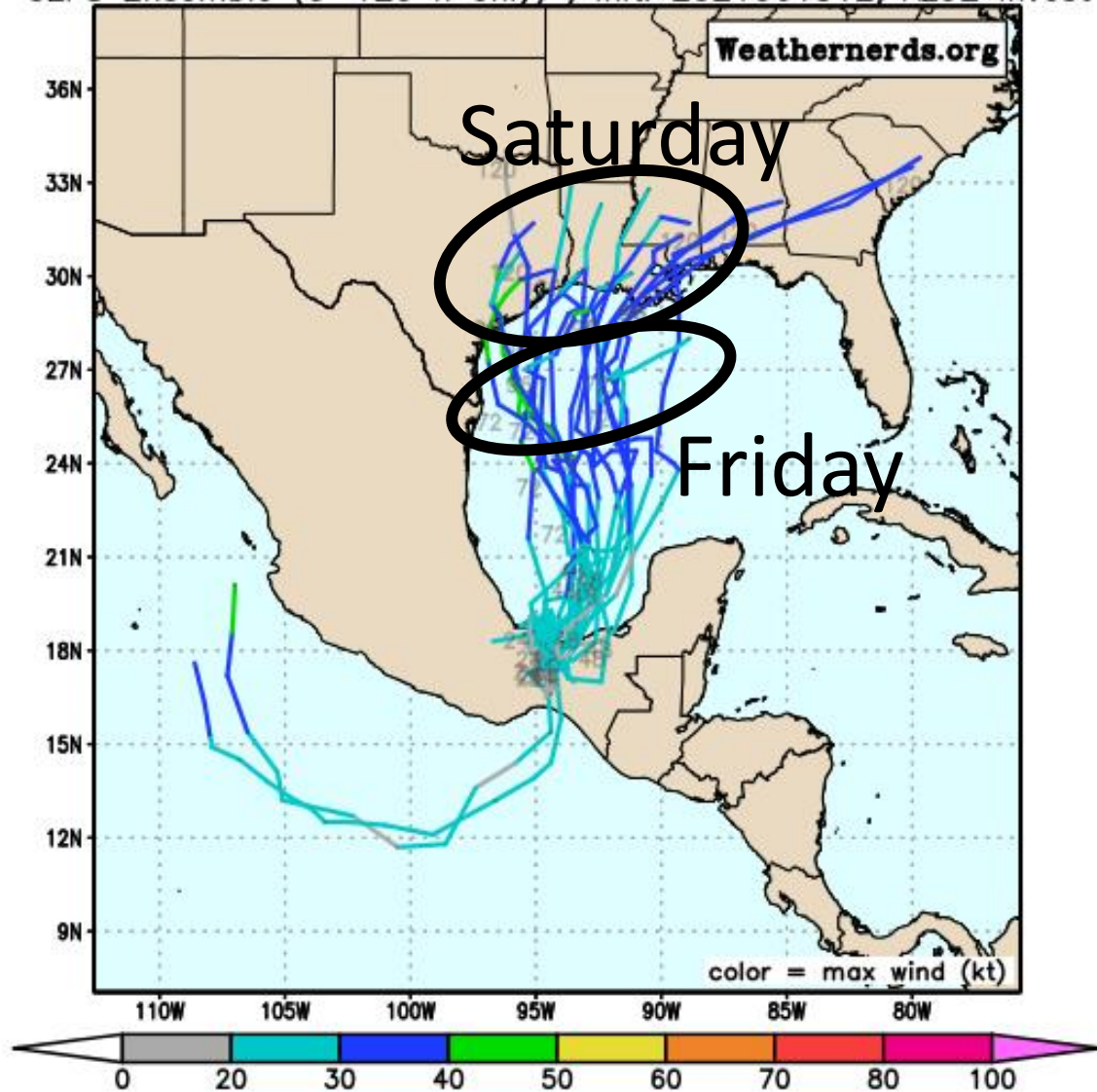




# Model Forecast Tracks Next 5 Days

## Ensemble Models – Invest 92L

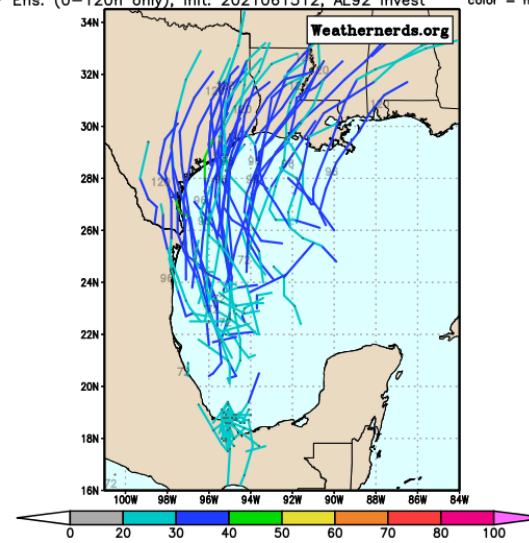
GEFS Ensemble (0–120 h only), init: 2021061512, AL92 Invest



Model guidance is in agreement about the system meandering in the southwestern Gulf of Mexico until Thursday. Then, by the weekend, there is **significant model uncertainty** across the western Gulf of Mexico as the system begins to move northward toward Texas and Louisiana.

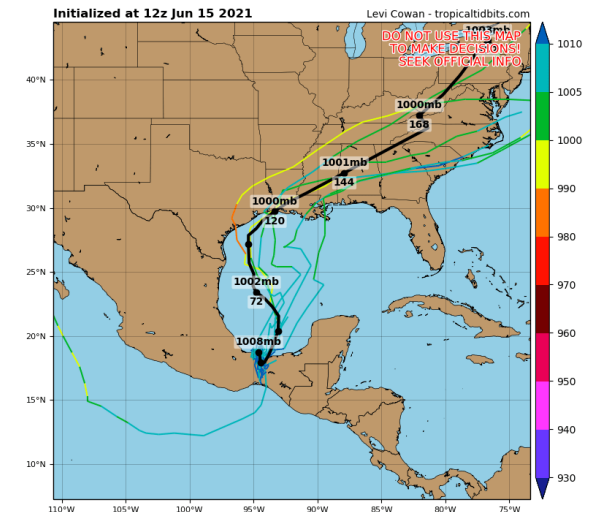
Regardless of development, this system will likely be lopsided with most of the rainfall being (well) east of the center. Heavy rainfall is possible in the Panhandle even with “the center of the storm” tracking into western Louisiana.

ECMWF Ens. (0–120h only), init: 2021061512, AL92 Invest color = max wind (kt)



Invest 92L GEFs Tracks & Min. MSLP (mb)

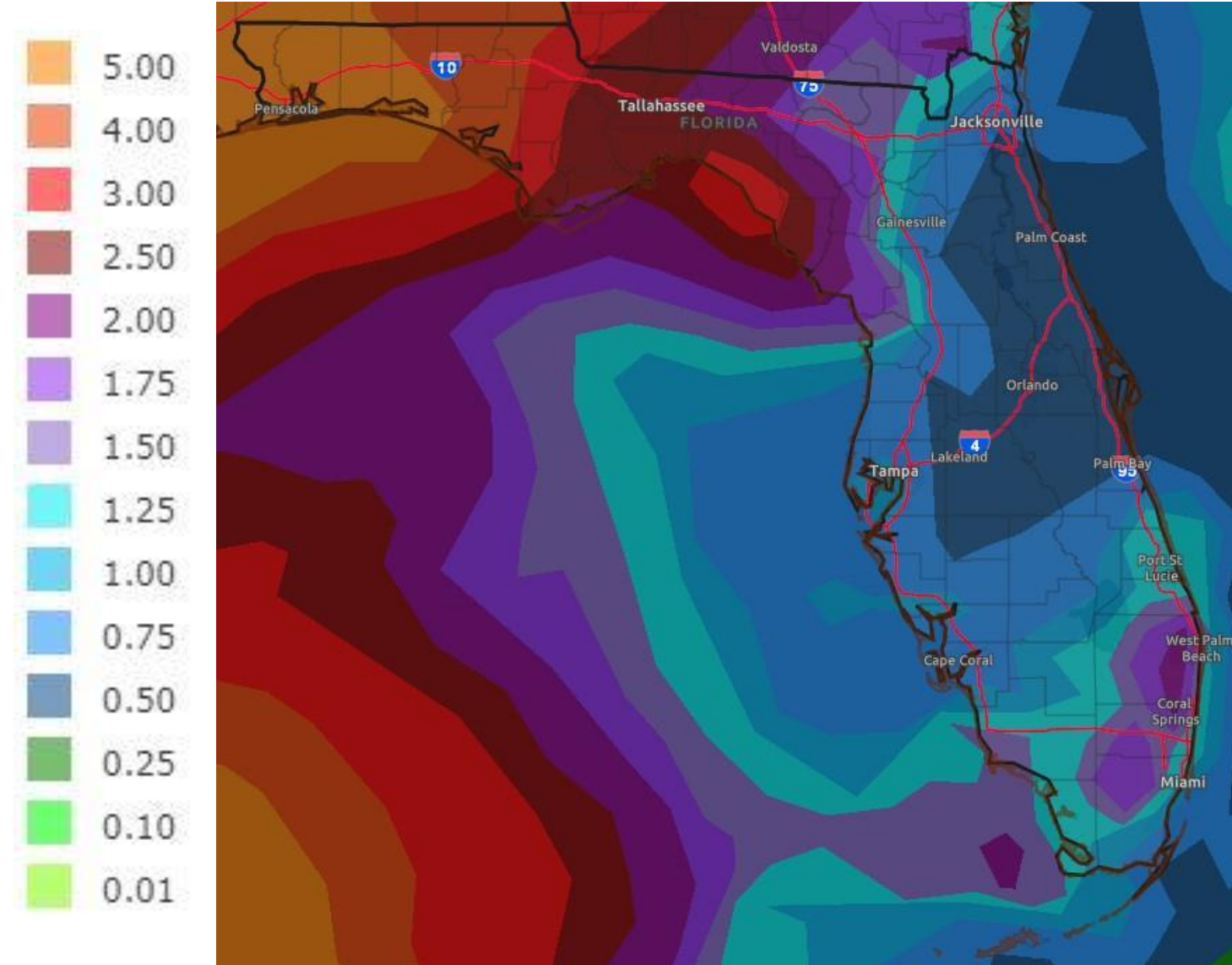
Initialized at 12z Jun 15 2021





# Rainfall Totals Next 7 Days

Ending 8 AM ET Tuesday



A widespread 4-6" of rain is currently forecast across the Panhandle over the next 7 days—a majority of which is associated with the system that develops in the western Gulf of Mexico late in the week. Locally higher totals are possible.

**These rainfall totals are highly dependent on the track and organization of the system, both of which are unknown at this time.**

The rainfall across the Peninsula is associated with thunderstorms over the next few days and is not related to the tropical system.



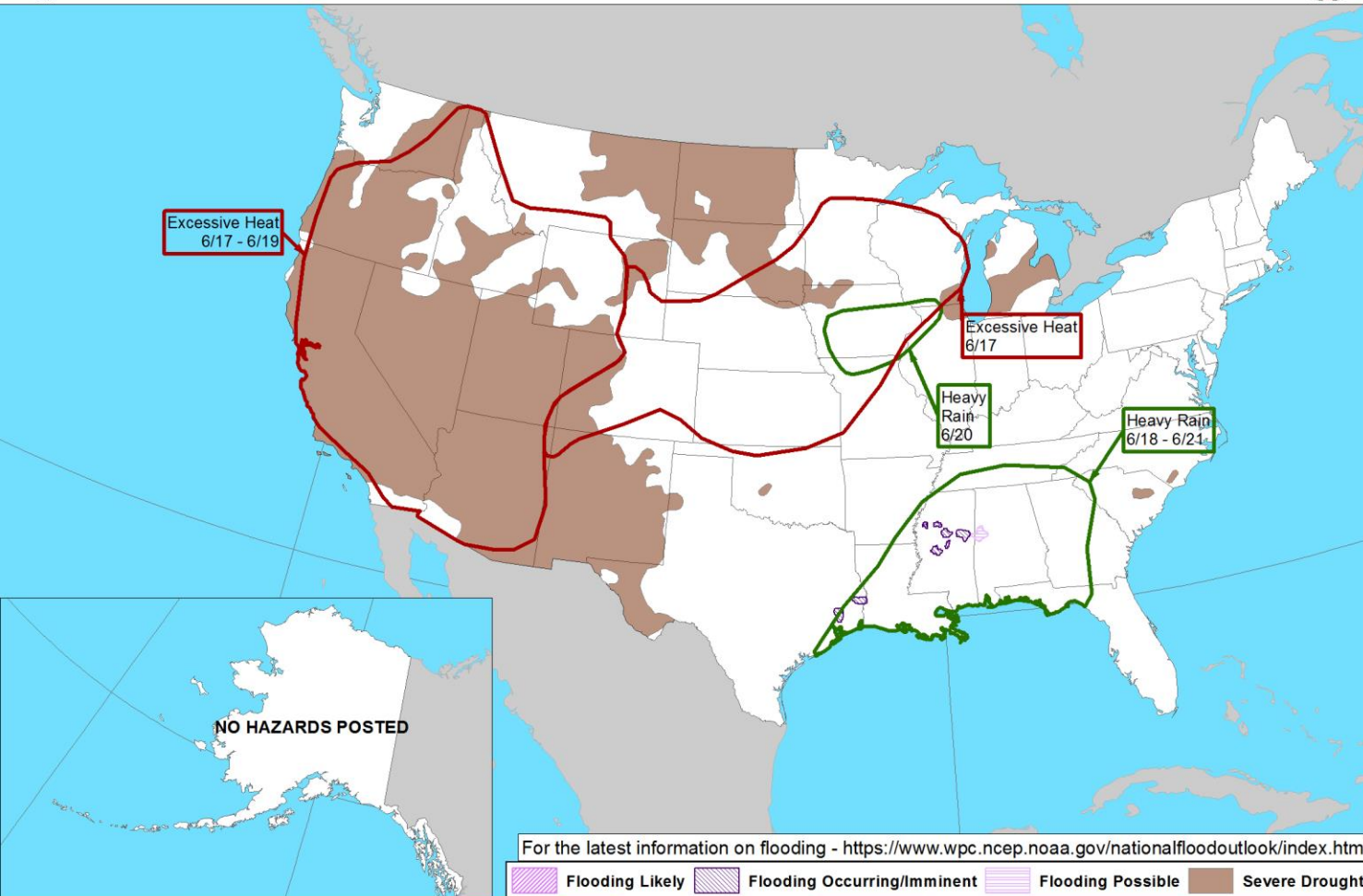


# Hazard Outlook

From the [Weather Prediction Center](#)



Day 3-7 U.S. Hazards Outlook  
Valid: 06/17/2021-06/21/2021



Locally heavy rainfall is possible this weekend across the Panhandle and western Big Bend, depending on the track of the possible tropical system.

Weather Prediction Center

Made: 06/14/2021 3PM EDT

Follow us:

[www.wpc.ncep.noaa.gov](https://www.wpc.ncep.noaa.gov)



# Overall Summary

## Florida Outlook:

### **Bay of Campeche Low – Invest 92L**

- An area of disorganized, disturbed weather over the southwestern Gulf of Mexico will slowly meander through Wednesday before moving northward across the western Gulf of Mexico Thursday-Saturday.
- This system may become better organized late in the week, and a tropical depression could form by Thursday or Friday in the southwestern Gulf of Mexico as the system moves northward.
- This weekend, the system will move inland and track Northeast across the southeastern United States.
- The National Hurricane Center gives this system a 40% (medium) chance of formation during the next 48 hours, but an 80% (high) chance of formation during the next 5 days.
- This system should be monitored for potential impacts in the Panhandle starting on Friday and continuing into the weekend.
- With this system likely being lopsided, most of the rainfall will be on the eastern side, which could bring heavy rainfall to the Panhandle even with a landfall in western Louisiana.
- It is too early to give specific details on exact rainfall amounts and consequent flash/river flood threats, but first guess forecasts are calling for 4-6".
- Dangerous rip currents are expected along Gulf Coast beaches by the end of the week and through the weekend.
- It remains too early to give specifics on any other impacts (wind, tornado, coastal flooding), but a significant wind and surge event is not anticipated at this time.
- The next name on the list is Claudette (klaw-DET).

The next briefing packet will be issued Wednesday morning. For the latest information on the tropics, please visit the National Hurricane Center website at [www.hurricanes.gov](http://www.hurricanes.gov).





# TROPICAL UPDATE



Created by:

Michael Spagnolo, Deputy State Meteorologist

[Michael.Spagnolo@em.myflorida.com](mailto:Michael.Spagnolo@em.myflorida.com)

State Meteorological Support Unit

Florida Division of Emergency Management

Users wishing to subscribe (approval pending) to this distribution list, register at:

[https://public.govdelivery.com/accounts/FLDEM/subscriber/new?topic\\_id=SERT\\_Met\\_Tropics](https://public.govdelivery.com/accounts/FLDEM/subscriber/new?topic_id=SERT_Met_Tropics).

Other reports available for subscription are available at:

<https://public.govdelivery.com/accounts/FLDEM/subscriber/new?preferences=true>