



TROPICAL UPDATE



12:00 PM EDT

Monday, June 14, 2021

Tropical Depression Two near North Carolina

Bay of Campeche Low – Invest 92L (60%)

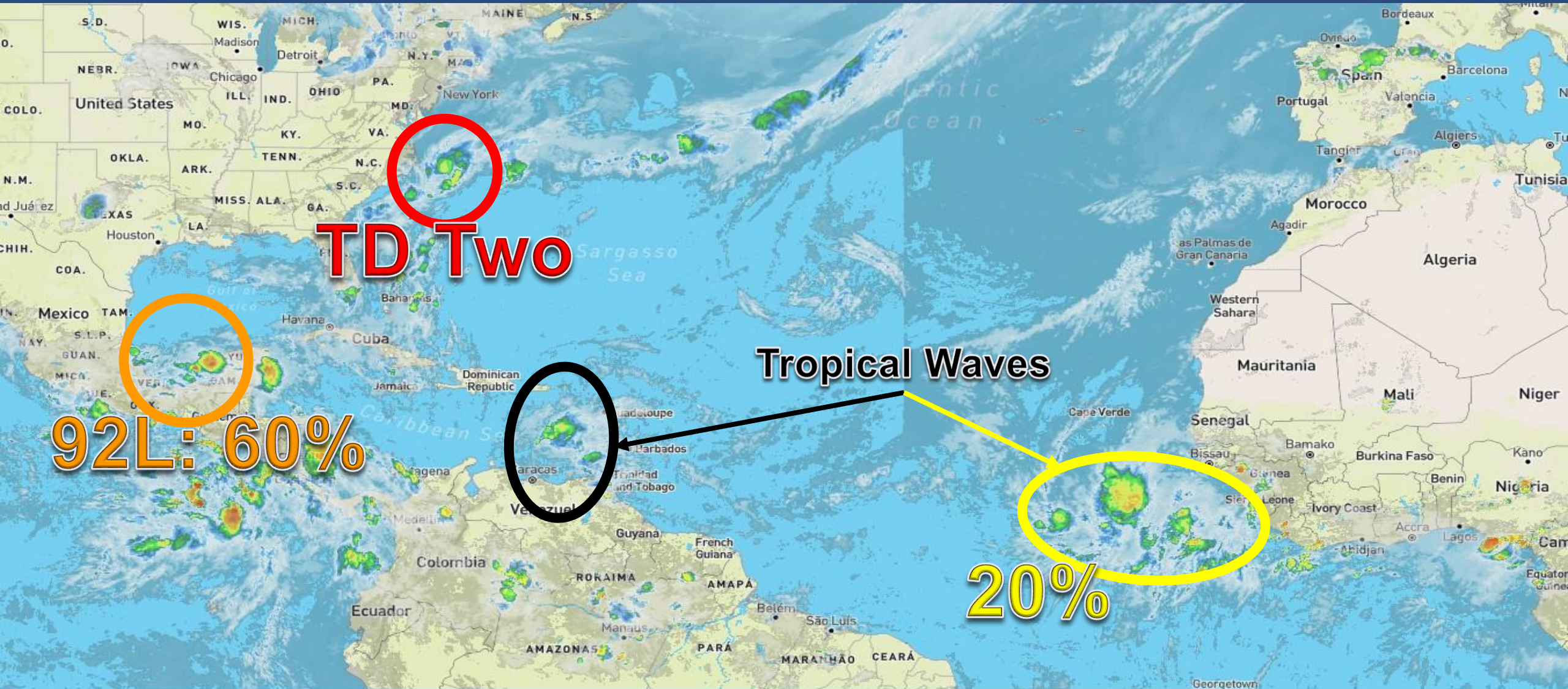
West Africa Tropical Wave (20%)

This update is intended for government and emergency response officials, and is provided for informational and situational awareness purposes only. Forecast conditions are subject to change based on a variety of environmental factors. For additional information, or for any life safety concerns with an active weather event please contact your County Emergency Management or Public Safety Office, local National Weather Service forecast office, or visit the National Hurricane Center website at www.hurricanes.gov.



Atlantic Basin Satellite Image

Chance of development: — None — Low — Medium — High



Map time: Mon Jun 14 2021 11:40:15 GMT-0400 (Eastern Daylight Time)



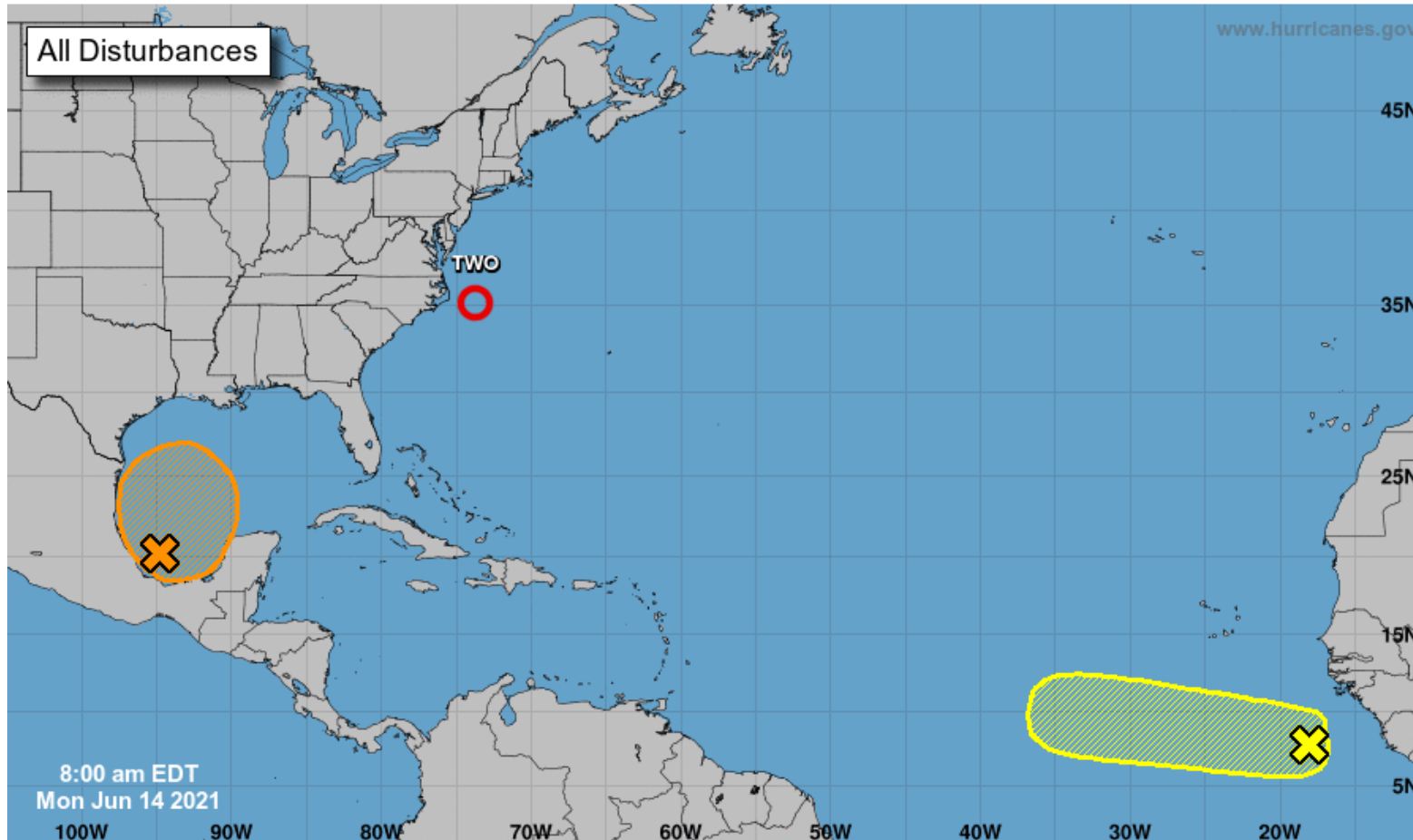
5-Day Tropical Weather Outlook

Possible Areas of Development During the Next 5 Days ([LINK](#))



Five-Day Graphical Tropical Weather Outlook

National Hurricane Center Miami, Florida

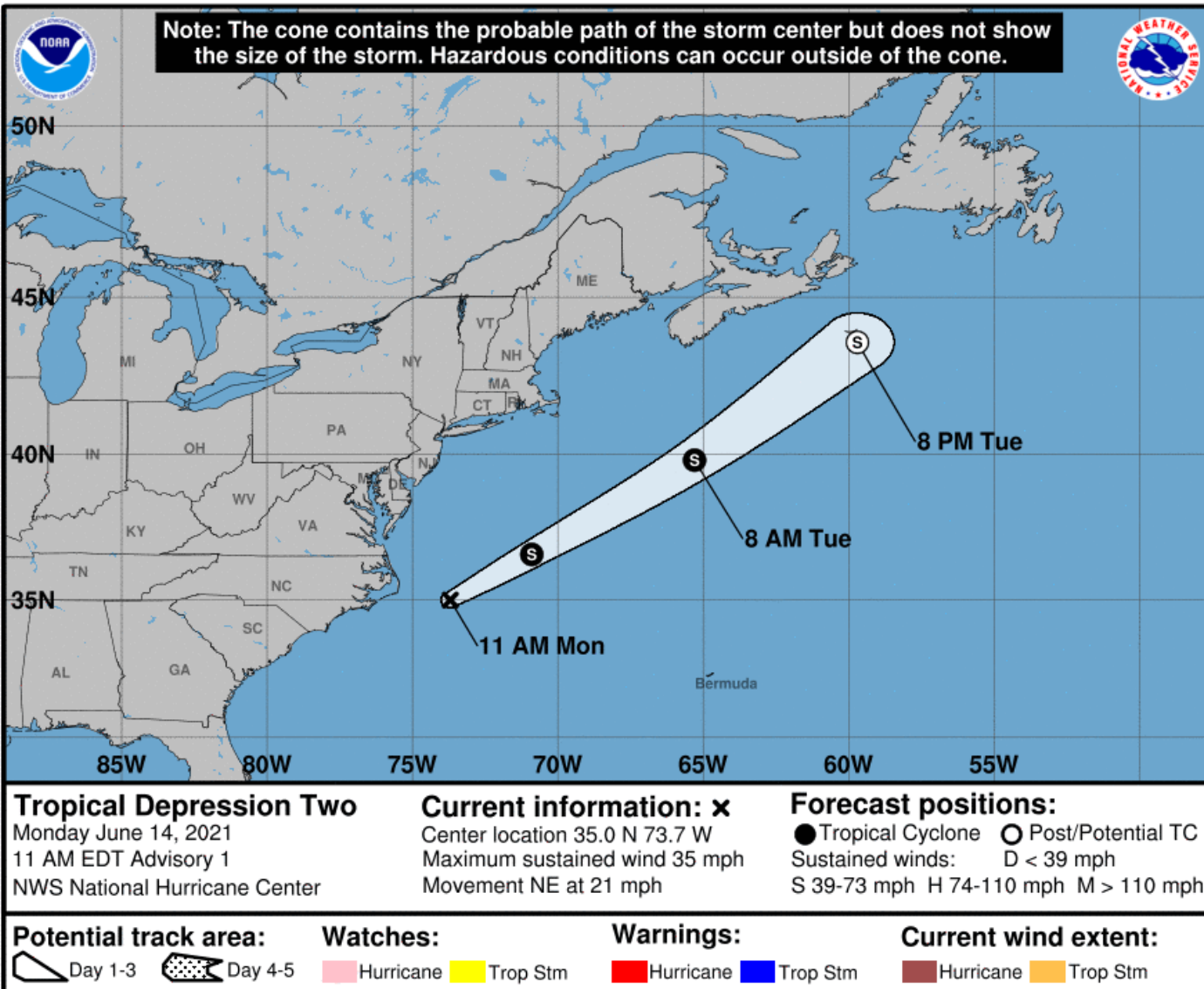


Current Disturbances and Five-Day Cyclone Formation Chance: < 40% 40-60% > 60%
Tropical or Sub-Tropical Cyclone: Depression Storm Hurricane
 Post-Tropical Cyclone or Remnants



Official Forecast Track – TD Two

From the National Hurricane Center – ([LINK](#))



- The well-defined low pressure off the coast of North Carolina continues to organize, and the National Hurricane Center has begun advisories on Tropical Depression Two.
- The center of Two is about 105 miles east of Cape Hatteras, North Carolina and moving to the northeast at 21 mph.
- Maximum sustained winds are around 35 mph.
- Tropical Depression Two is forecast to strengthen into a Tropical Storm (Bill is next on the list) tonight. By Wednesday it will be over the cold water of the North Atlantic and will dissipate.
- **This system poses no threat to Florida.**



Tropical Weather Outlook

Possible Area of Development During the Next 5 Days ([LINK](#))



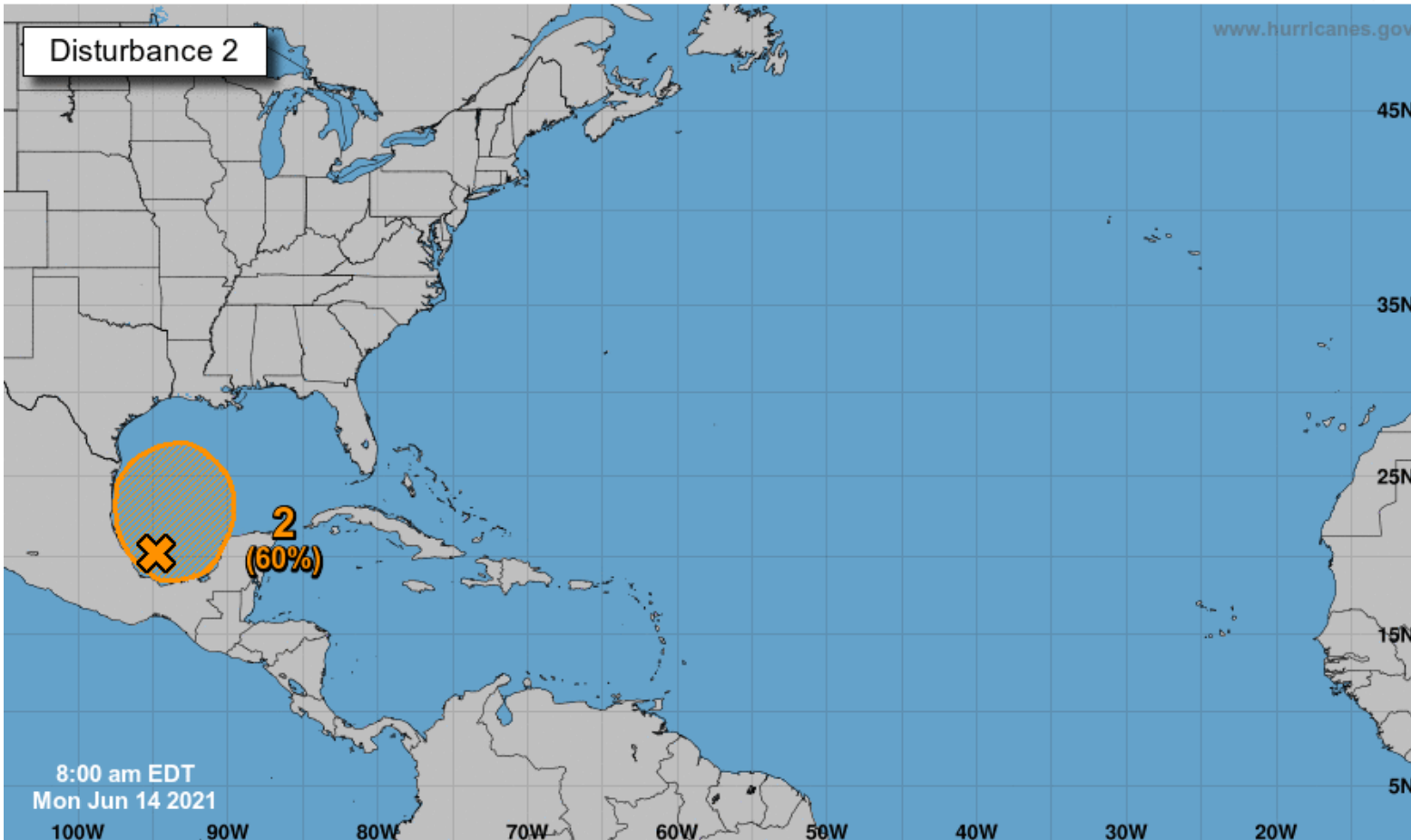
Five-Day Graphical Tropical Weather Outlook

National Hurricane Center Miami, Florida



www.hurricanes.gov

Disturbance 2



Showers and thunderstorms located over the Bay of Campeche are associated with a broad low pressure area. Gradual development of this disturbance is possible during the next couple of days while it meanders near the coast of Mexico, and a tropical depression could form late in the week when the system moves northward into the central Gulf of Mexico.

This system should be monitored for any possible impacts late this week or this weekend in the Panhandle.

***Formation chance through 48 hours...low...20%**

***Formation chance through 5 days...medium...60%**

Current Disturbances and Five-Day Cyclone Formation Chance:
 Tropical or Sub-Tropical Cyclone:
 < 40% 40-60% > 60%
 Depression Storm Hurricane
 Post-Tropical Cyclone or Remnants



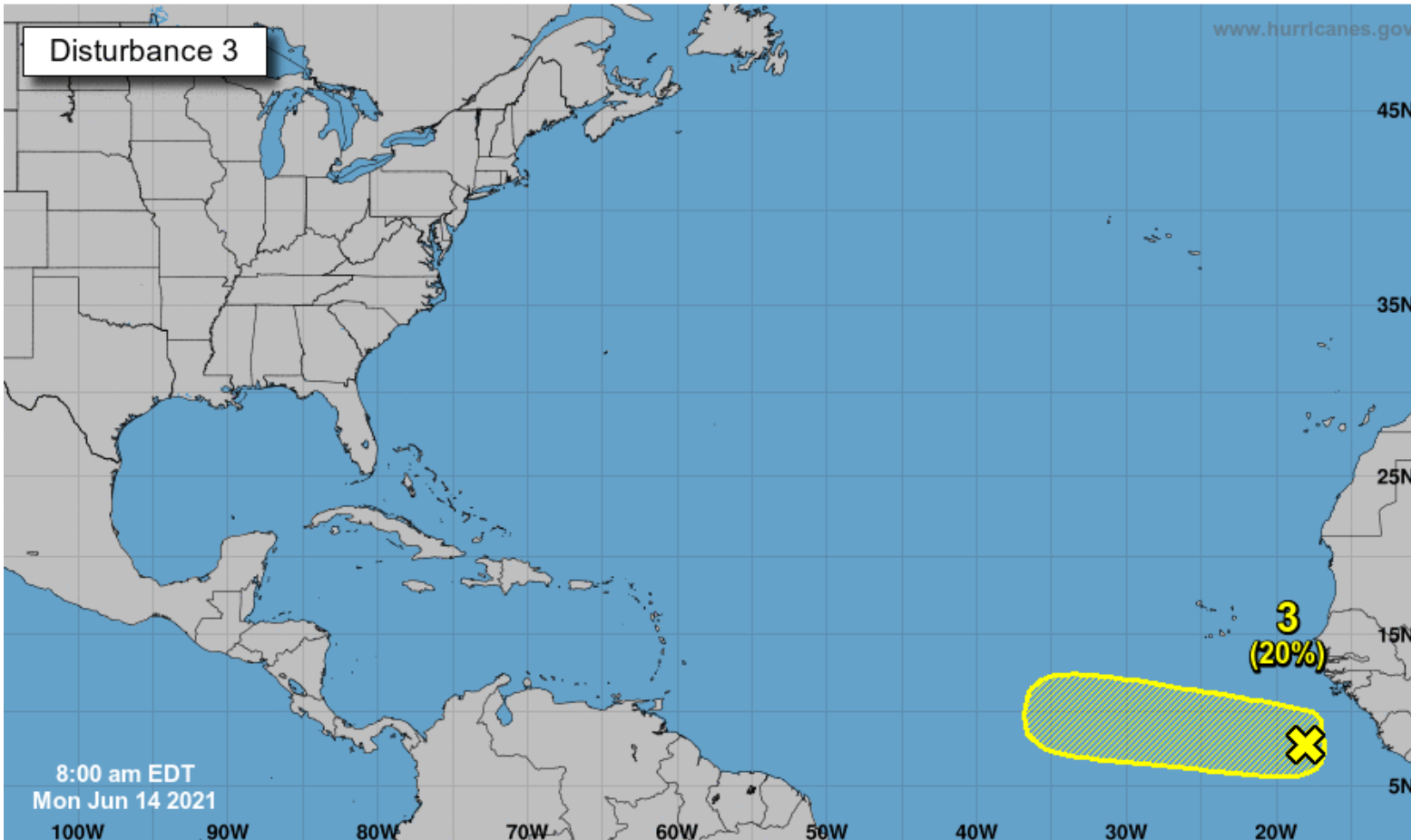
Tropical Weather Outlook

Possible Area of Development During the Next 5 Days ([LINK](#))



Five-Day Graphical Tropical Weather Outlook

National Hurricane Center Miami, Florida



A strong tropical wave just offshore of west Africa is producing disorganized shower and thunderstorm activity. Some development of this system is possible during the next few days before a combination of dry air aloft and strong upper-level winds limit any chance of formation while the wave is over the central tropical Atlantic Ocean late week.

This system poses no threat to Florida over the next 5 days, and is not expected to survive the hostile conditions in the central Atlantic.

***Formation chance through 48 hours...low...10%**

***Formation chance through 5 days...low...20%**

Current Disturbances and Five-Day Cyclone Formation Chance: < 40% 40-60% > 60%
Tropical or Sub-Tropical Cyclone: Depression Storm Hurricane
 Post-Tropical Cyclone or Remnants



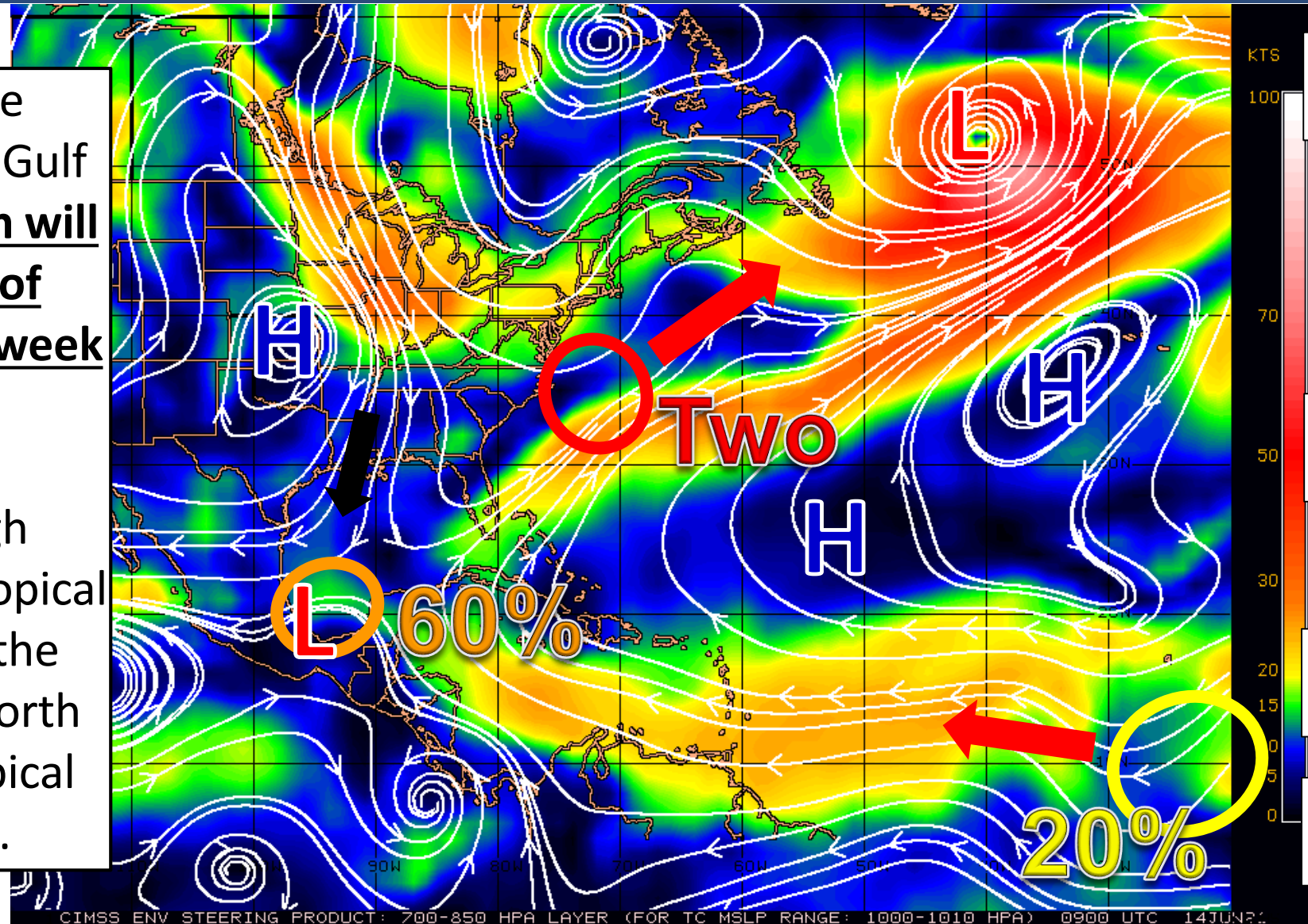
Steering Currents

What is Moving the System?

Color denotes the movement speed through the atmosphere and thin white lines denote direction. Tightly clustered white lines represent faster movement as well.

With high pressure blocking most of the Gulf of Mexico, the system will remain in the Bay of Campeche until mid-week at least.

A large area of high pressure will move Tropical Depression Two to the northeast into the North Atlantic and the tropical wave to the west.



Fast Moving Storm

Fast Moving Storm

Typical Moving Storm

Slow Moving Storm



Wind Shear

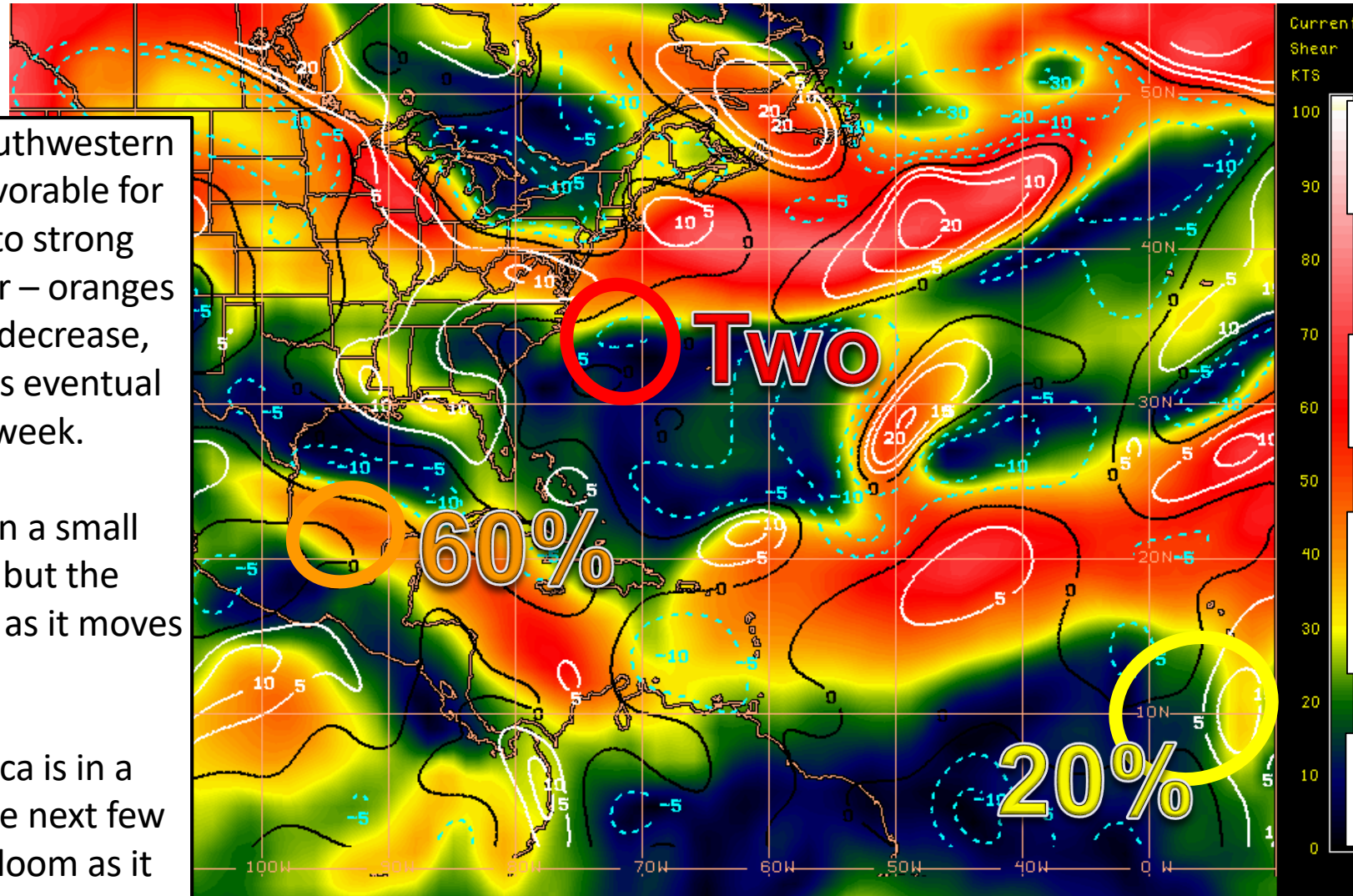
Is the environment favorable for the system?

Color denotes the amount of wind shear and the lines denote how it have changed over the last 24 hours (dotted lines show decreasing shear and solid lines show increasing).

The environment over the southwestern Gulf of Mexico remains unfavorable for tropical development due to strong upper-level winds (wind shear – oranges and reds). It is beginning to decrease, which may aid in the system's eventual development later this week.

Tropical Depression two is in a small pocket of favorable winds but the environment becomes hostile as it moves north.

The tropical wave near Africa is in a favorable environment for the next few days, but hostile conditions loom as it heads west towards the Caribbean.



HIGH Shear
(Unfavorable)

HIGH Shear
(Unfavorable)

MODERATE
Shear
(Neutral)

LOW Shear
(Favorable)

endency (KTS) Over Past 24 Hours: Increasing — Decreasing ----



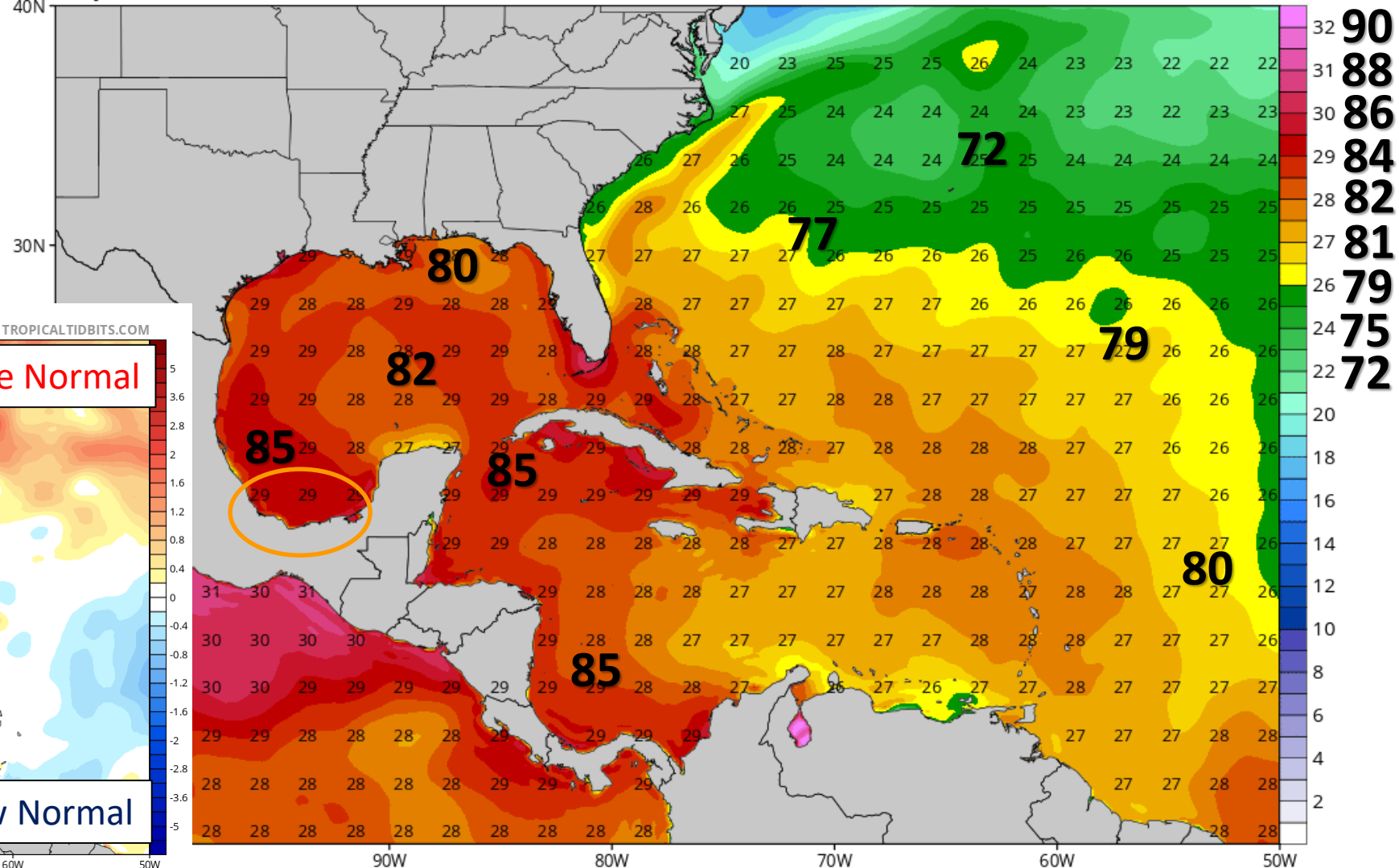
Sea Surface Temperatures & Anomalies

Is the ocean favorable for the system?

Water temperatures are warm enough to support tropical development in the Gulf of Mexico and are running slightly above normal for this time of year (and off the East Coast of the United States). Ocean temperatures near Africa are actually below normal, but still warm enough for marginal tropical development.

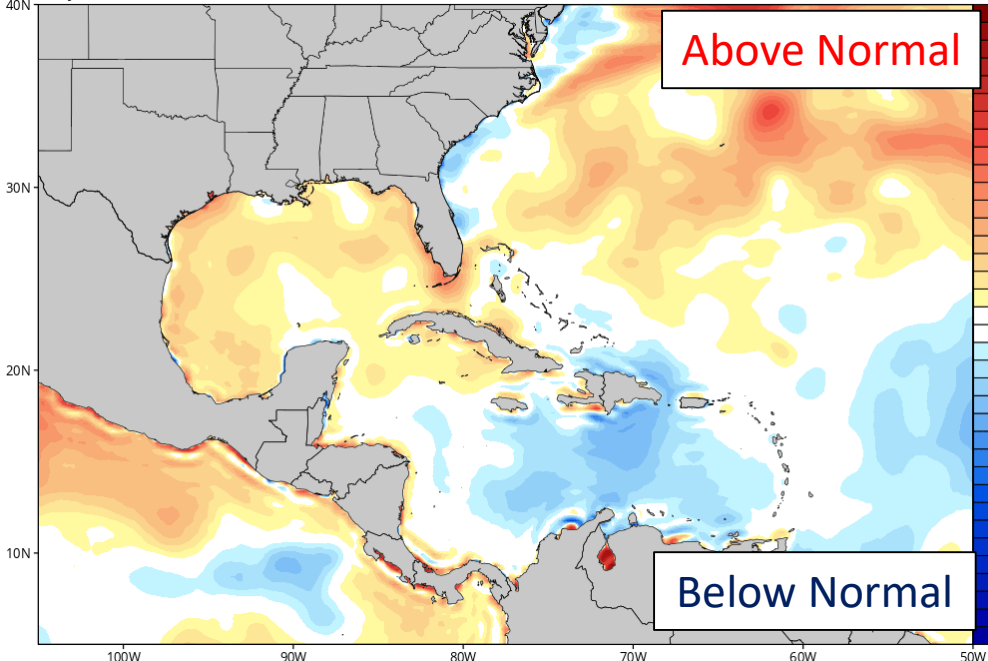
CDAS Sea Surface Temperature (°C)

Analysis Time: 06z Jun 14 2021



CDAS Sea Surface Temperature Anomaly (°C) (based on CFSR 1981-2010 Climatology)

Analysis Time: 06z Jun 14 2021



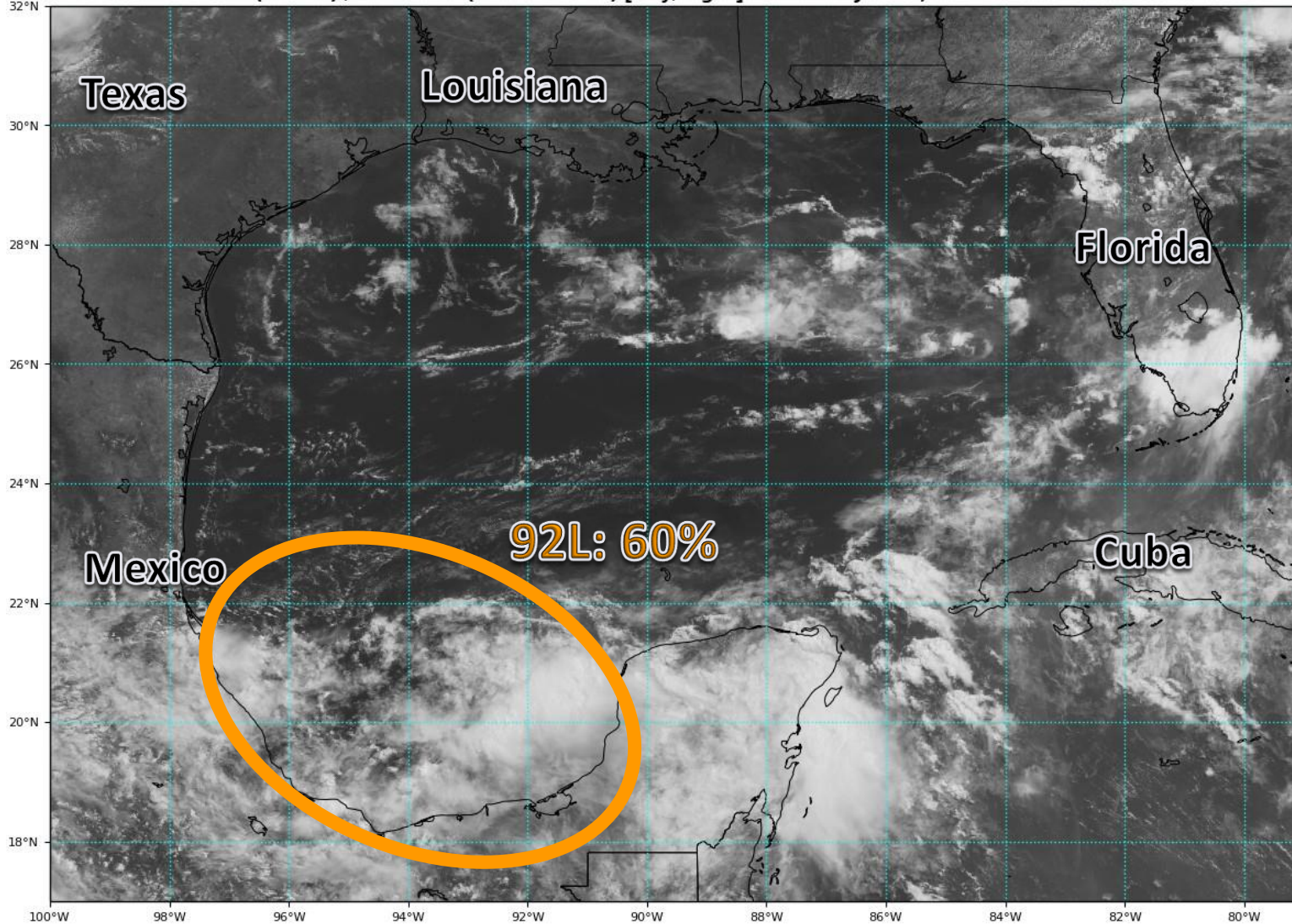


Satellite Imagery

Gulf of Mexico – Invest 92L

GOES-16 Channel 2 (visible) / Channel 7 (shortwave IR) [Day/Night] at 15:55Z Jun 14, 2021

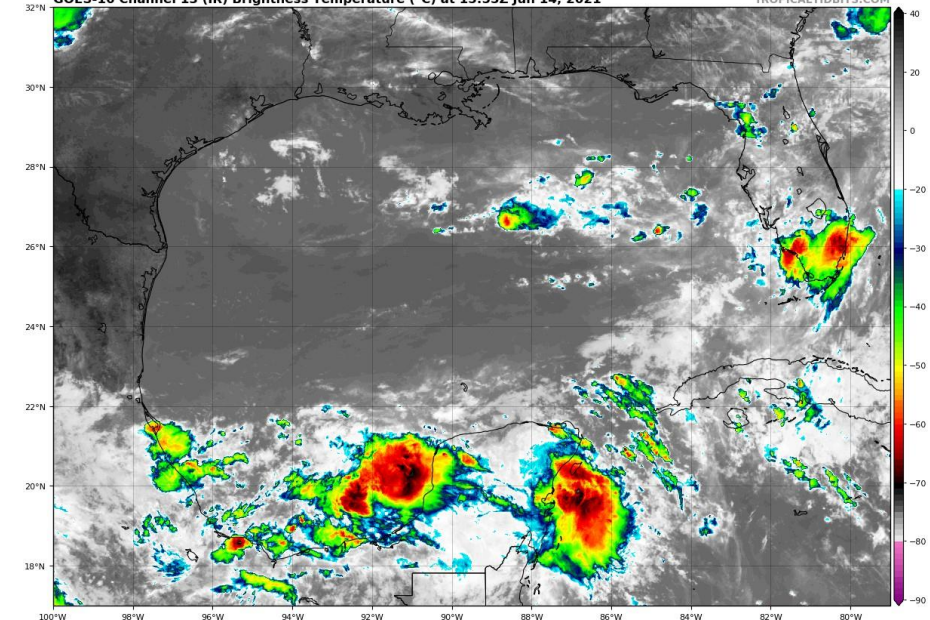
TROPICALTIDBITS.COM



The system is currently a disorganized area of showers and thunderstorms and lacks any well-defined circulation. Development of this system will be slow to occur as it moves little through Wednesday.

GOES-16 Channel 13 (IR) Brightness Temperature (°C) at 15:55Z Jun 14, 2021

TROPICALTIDBITS.COM

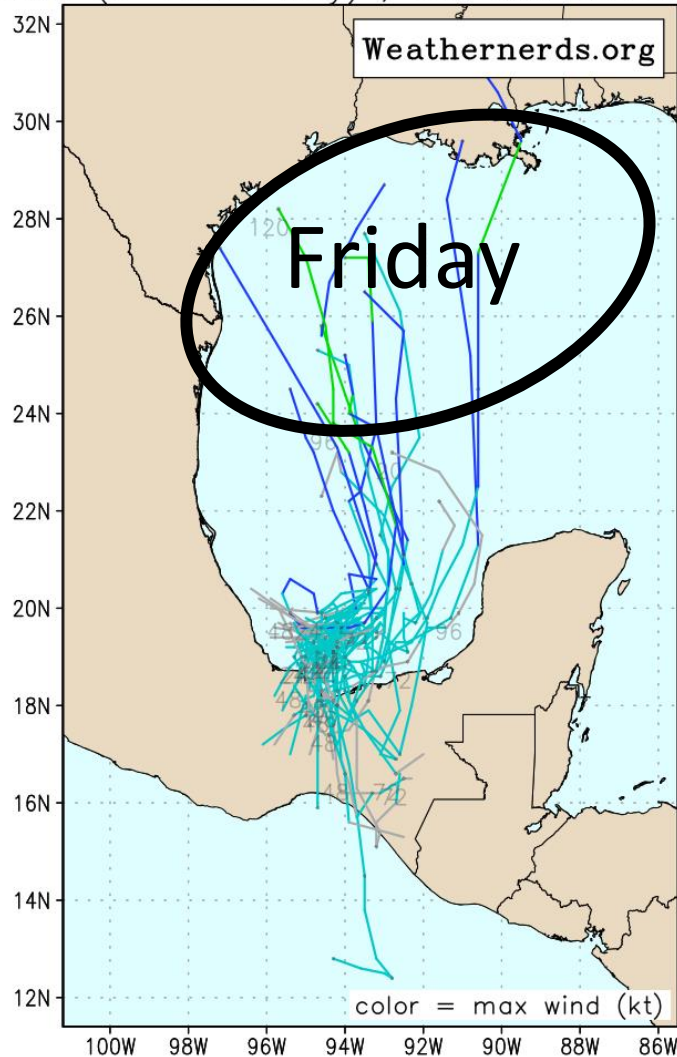




Model Forecast Tracks Next 5 Days

Ensemble Models

GEFS Ensemble (0–120 h only), init: 2021061406, AL92 Invest



Model guidance is in agreement about the system meandering in the southwestern Gulf of Mexico or Bay of Campeche until late in the week (Thursday or Friday). Then, by the weekend, there is considerable spread across the western Gulf as the system begins to lift northward toward Texas and Louisiana.

Regardless of development, this system will likely be lopsided with most of the rainfall being (well) east of the center.

A more easterly track would bring heavy rainfall impacts to the Florida Panhandle for the weekend.



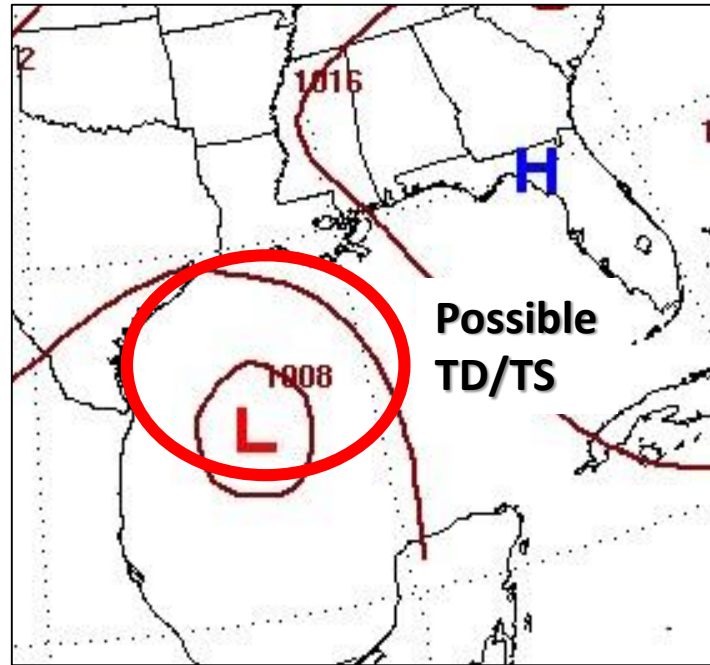
Forecast Fronts Next Week

Weather Prediction Center ([LINK](#))

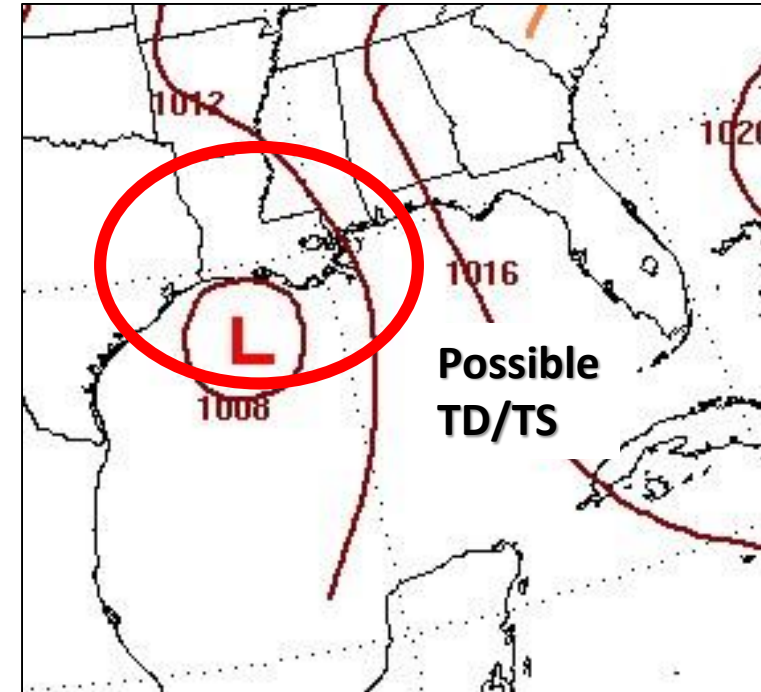
Friday



Saturday



Sunday



The current official forecast from the Weather Prediction Center shows an area of low pressure, possibly a tropical depression or storm in the southwestern Gulf of Mexico on Friday, which then moves generally northward toward Texas or Louisiana on Saturday/Sunday.

This is a big picture view, as details cannot be deciphered 5+ days out!



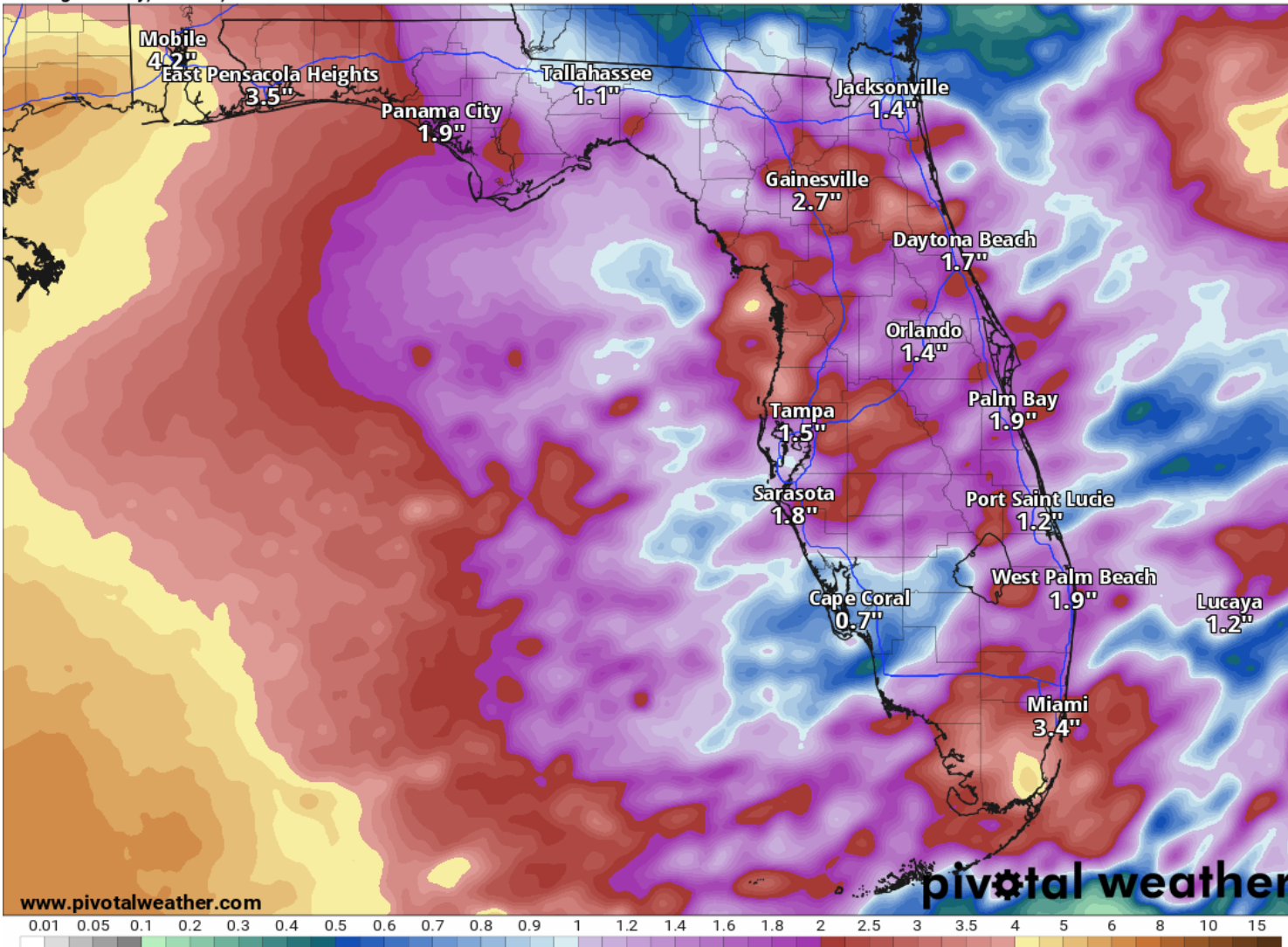
Rainfall Totals Next 7 Days

Ending 8 AM ET Monday

7-Day Precipitation (in)

Ending Monday, Jun. 21, 2021 at 8 a.m. EDT

Init: Mon 2021-06-14 12z WPC



A widespread 2-4" of rain is currently forecast across the Panhandle over the next 7 days—a majority of which is associated with any possible system that develops in the western Gulf of Mexico late in the week. Locally higher totals are possible.

These rainfall totals are highly dependent on the track and organization of the system, both of which are unknown at this time.

The rainfall across the rest of the state is associated with thunderstorms over the next few days and is not related to the tropical system.

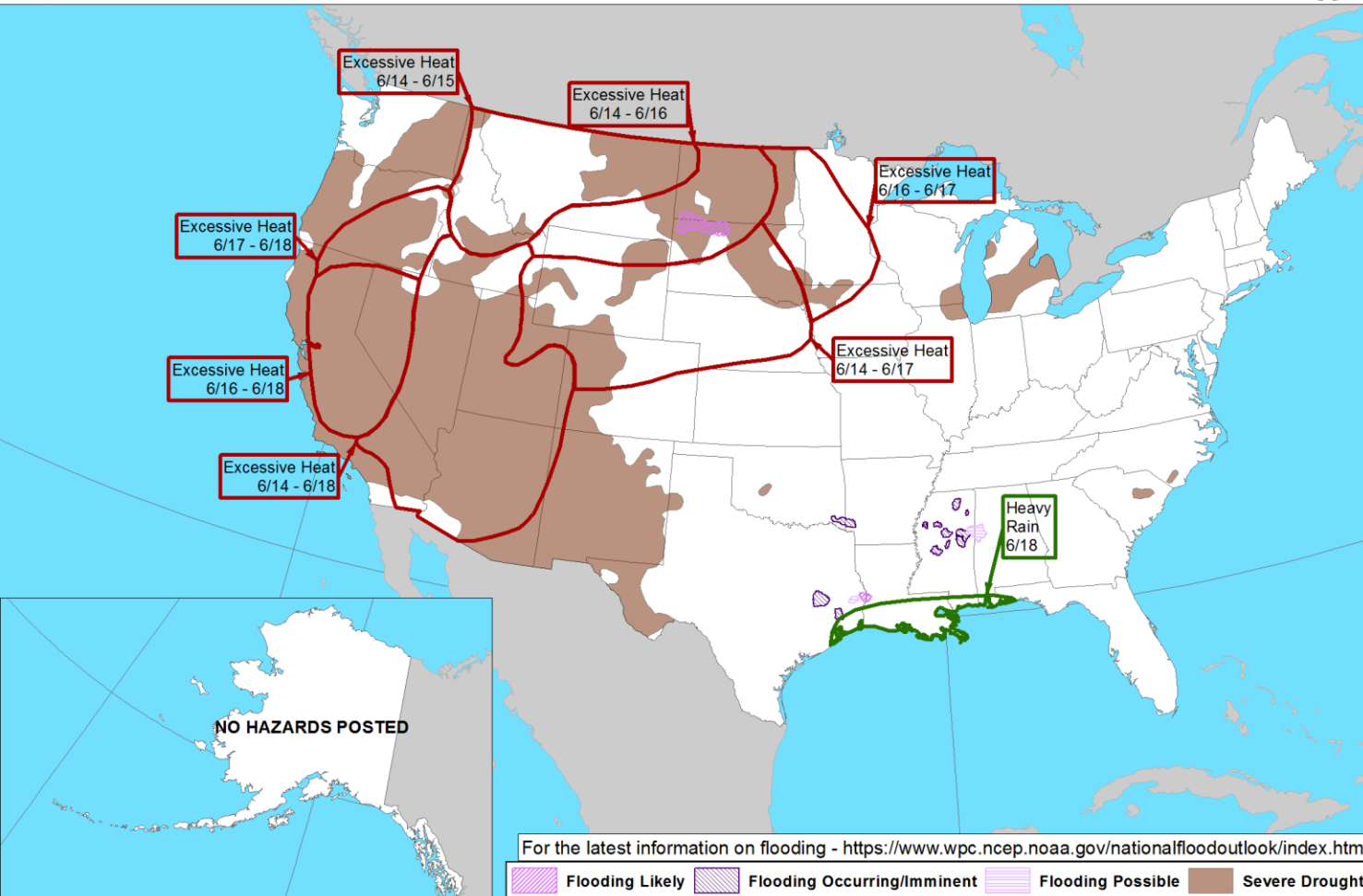


Hazard Outlook

From the [Weather Prediction Center](#)



Day 3-7 U.S. Hazards Outlook
Valid: 06/14/2021-06/18/2021



Locally heavy rainfall is possible by the end of the week in the western Panhandle, depending on the track of the possible tropical system.

Weather Prediction Center

Made: 06/11/2021 3PM EDT

Follow us: [f](#)

www.wpc.ncep.noaa.gov



Overall Summary

Tropical Depression Two

- The well-defined low pressure off the coast of North Carolina continues to organize, and the National Hurricane Center has begun advisories on Tropical Depression Two as of 11 AM ET.
- The center of Two is about 105 miles east of Cape Hatteras, North Carolina and moving to the northeast at 21 mph.
- Maximum sustained winds are around 35 mph.
- Tropical Depression Two is forecast to strengthen into a Tropical Storm tonight or Tuesday. By Wednesday it will be over the cold water of the North Atlantic and will dissipate.

Bay of Campeche Low – Invest 92L

- An area of disorganized, disturbed weather over the Bay of Campeche will slowly meander for a few days in the southwestern Gulf of Mexico.
- This system may become better organized late in the week, and a tropical depression could form by Thursday or Friday in the southwestern Gulf of Mexico or Bay of Campeche.
- This system will likely then move northward over the western Gulf of Mexico late in the week, but its track and intensity are unknown at this time.
- The National Hurricane Center gives this system a 20% (low) chance of formation during the next 48 hours, but a 60% (medium) chance of formation during the next 5 days.

Tropical Depression Two

- A strong tropical wave just offshore of west Africa is producing disorganized shower and thunderstorm activity.
- Some development of this system is possible during the next few days before a combination of dry air aloft and strong upper-level winds limit any chance of formation while the wave is over the central tropical Atlantic Ocean late week.
- The National Hurricane Center gives this system a 10% (low) chance of formation during the next 48 hours, and a 20% (low) chance of formation during the next 5 days.



Overall Summary

Florida Outlook:

- Tropical Depression Two poses no threat to land as it moves towards the cold waters of the North Atlantic.
- The tropical wave near Africa poses no threat to Florida over the next 7 days, if at all. It is expected to dissipate in the hostile environment of the Central Tropical Atlantic.
- The system in the southwestern Gulf of Mexico (Invest 92L) should be monitored for potential impacts in the Panhandle later this week or weekend (mainly heavy rainfall and rip currents).
- With this system likely being lopsided, most of the rainfall will be on the eastern side, which could bring heavy rainfall to the Panhandle by the end of next week even with a landfall in Louisiana. It is too early to give specific details on exact rainfall amounts and consequent flash/river flood threats.
- Dangerous rip currents will be possible along Panhandle beaches by the end of the week.
- It remains too early to give specifics on any other impacts (wind, tornado, coastal flooding).
- The next names on the list are Bill and Claudette (klaw-DET).

The next briefing packet will be issued late Tuesday morning. For the latest information on the tropics, please visit the National Hurricane Center website at www.hurricanes.gov.



TROPICAL UPDATE



Created by:

Michael Spagnolo, Deputy State Meteorologist

Michael.Spagnolo@em.myflorida.com

State Meteorological Support Unit

Florida Division of Emergency Management

Users wishing to subscribe (approval pending) to this distribution list, register at:

https://public.govdelivery.com/accounts/FLDEM/subscriber/new?topic_id=SERT_Met_Tropics.

Other reports available for subscription are available at:

<https://public.govdelivery.com/accounts/FLDEM/subscriber/new?preferences=true>