



TROPICAL UPDATE



10:00 AM EST

Wednesday, November 4, 2020

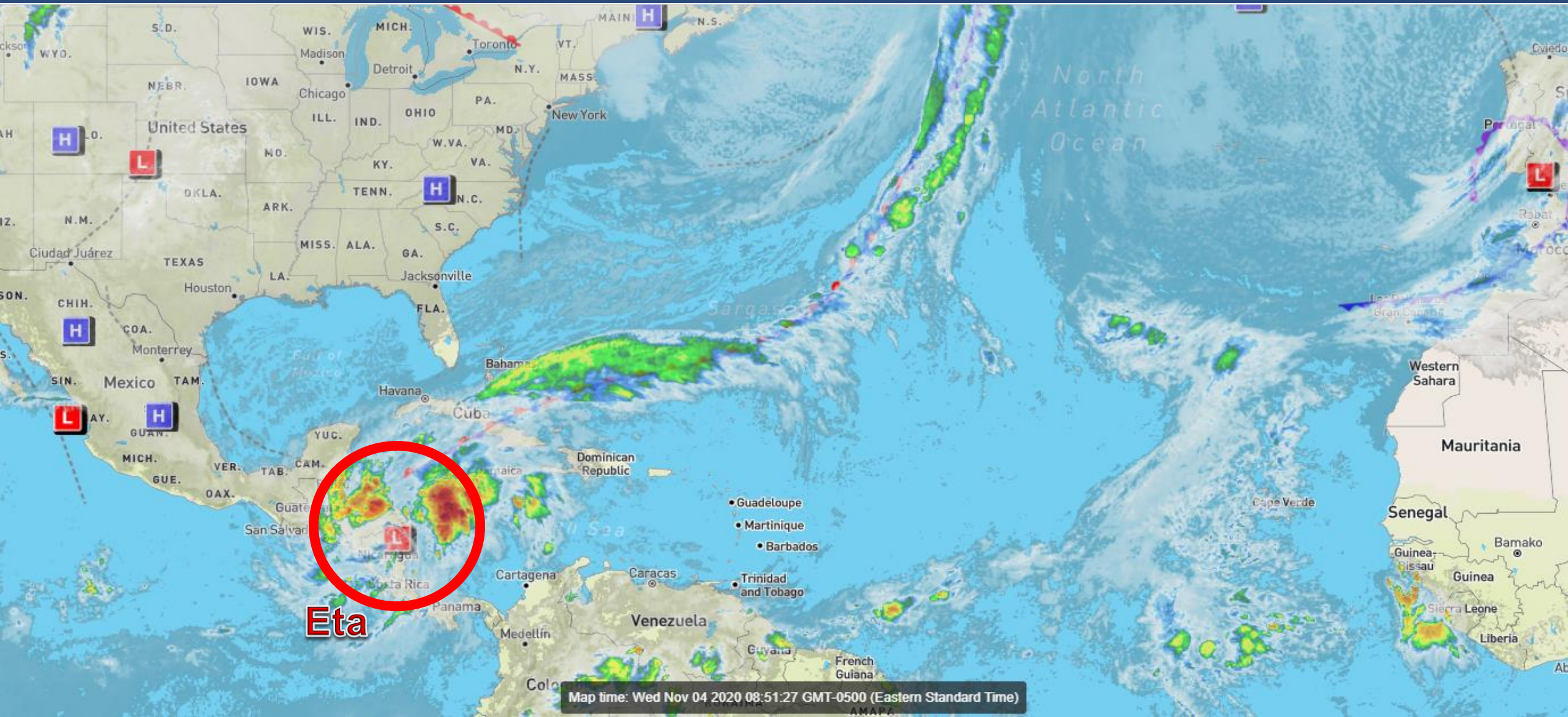
Tropical Storm Eta

This update is intended for government and emergency response officials, and is provided for informational and situational awareness purposes only. Forecast conditions are subject to change based on a variety of environmental factors. For additional information, or for any life safety concerns with an active weather event please contact your County Emergency Management or Public Safety Office, local National Weather Service forecast office, or visit the National Hurricane Center website at www.hurricanes.gov.



Atlantic Basin Satellite Image

Chance of development: None Low Medium High



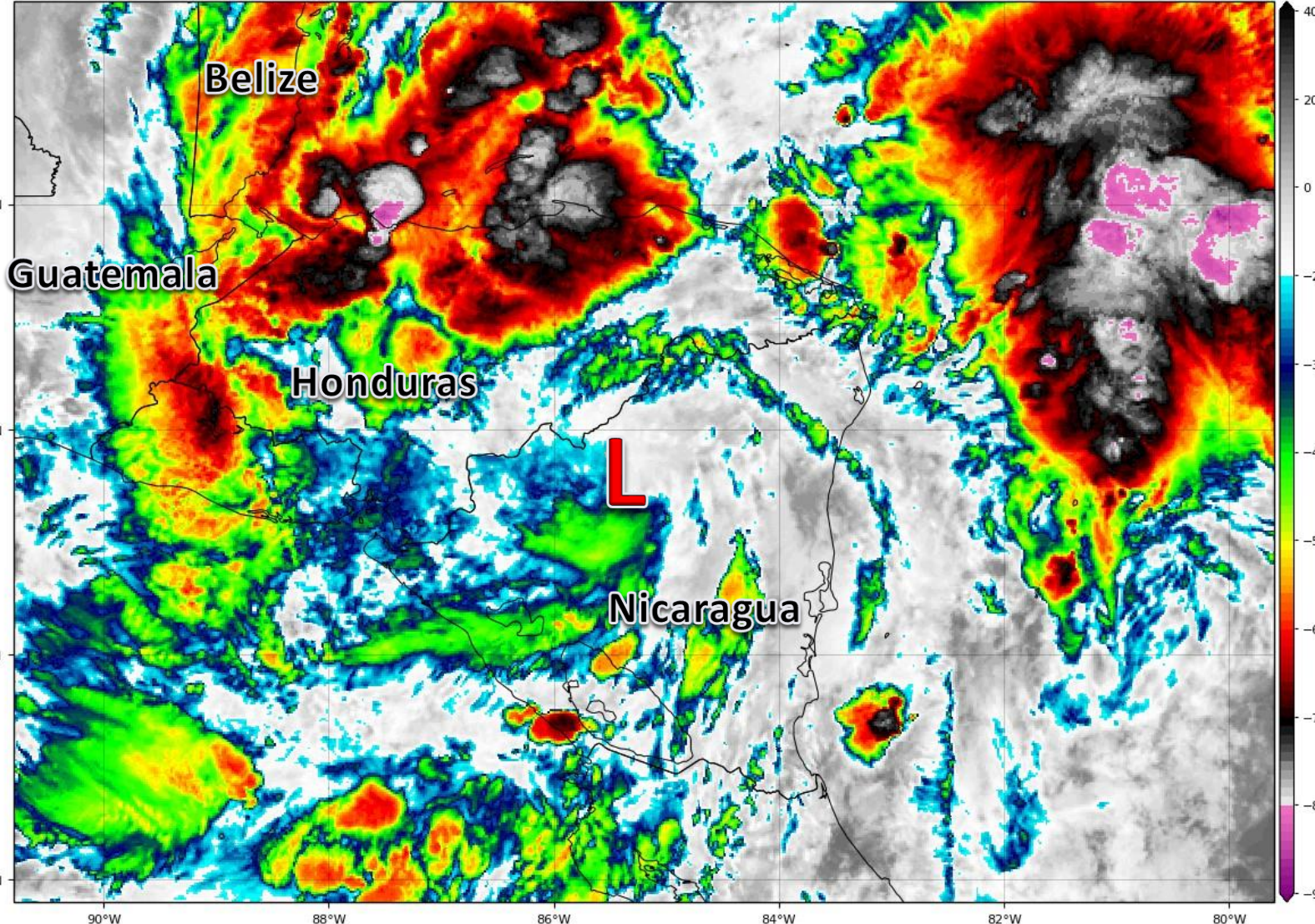


Satellite Imagery

Tropical Storm Eta – Central America

GOES-16 Channel 13 (IR) Brightness Temperature (°C) at 13:55Z Nov 04, 2020

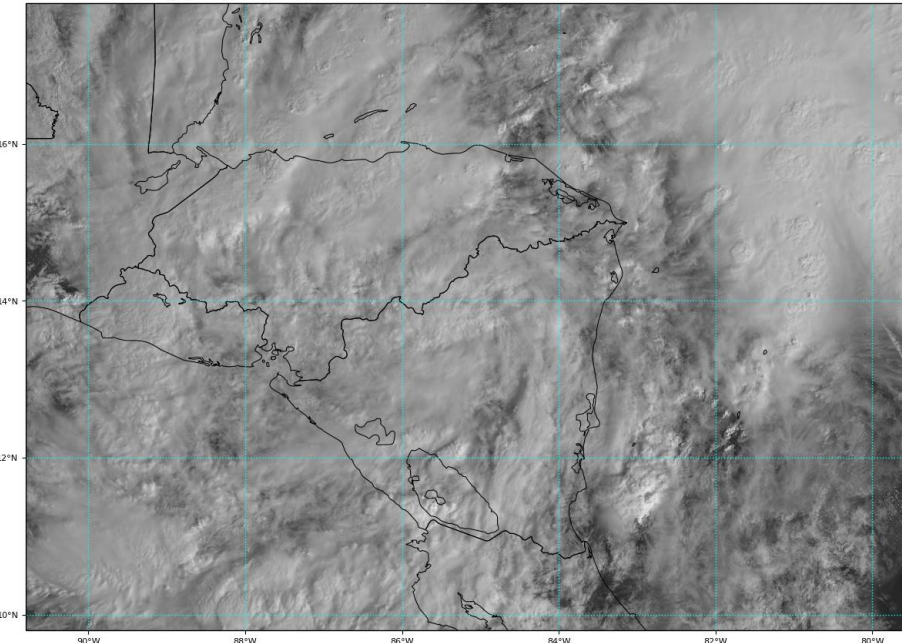
TROPICALTIDBITS.COM



Eta has moved well inland over Central America and is interacting with the mountainous terrain. The surface circulation is expected to degenerate into a remnant low over the next day or so, then redevelop in the western Caribbean Friday or Saturday.

GOES-16 Channel 2 (visible) Reflectance at 14:05Z Nov 04, 2020

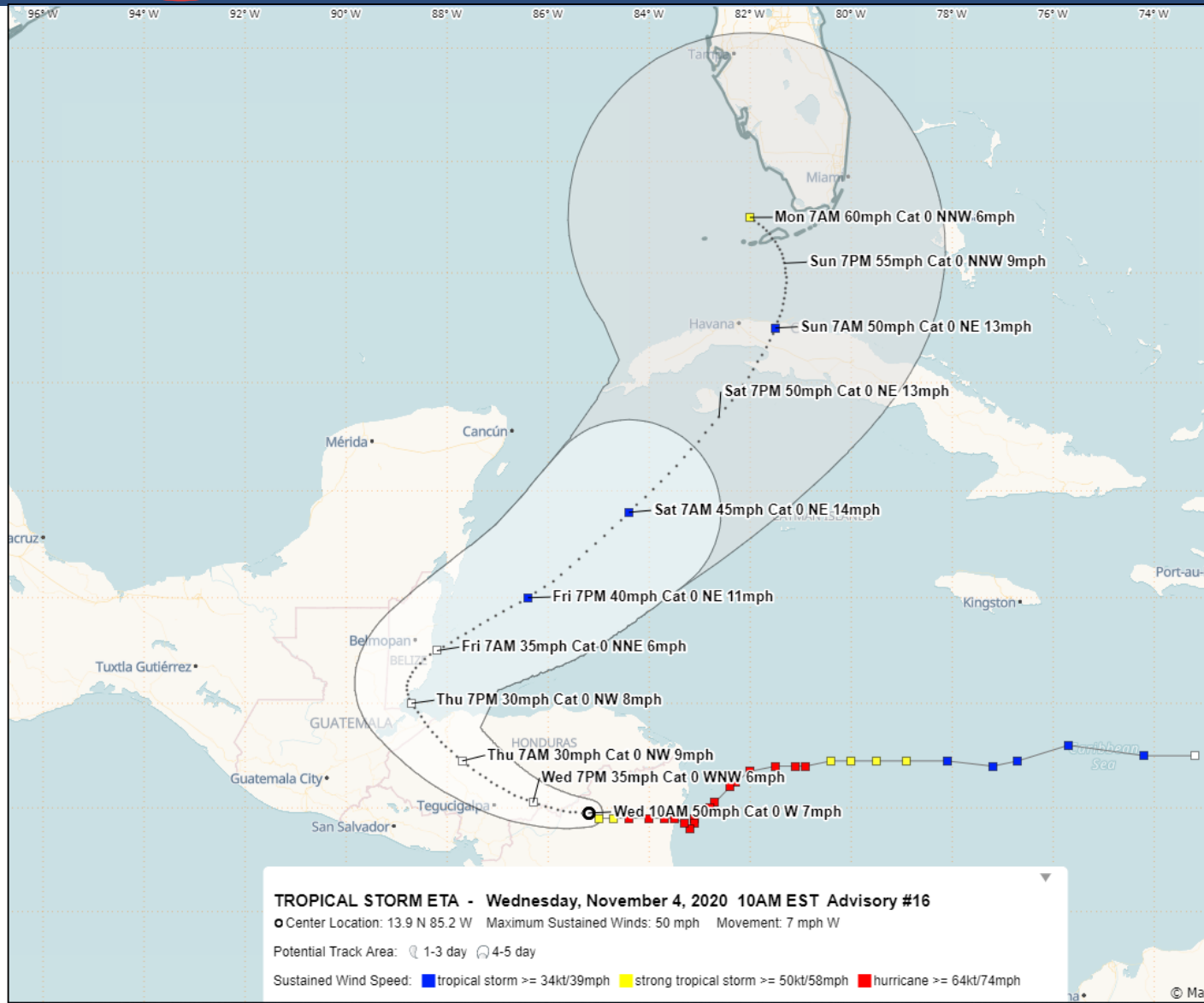
TROPICALTIDBITS.COM





Official Forecast Track

From the National Hurricane Center – Tropical Storm Eta



- The center of Eta is located about 135 miles north-northeast of Managua, Nicaragua and moving west at 7 mph.
- Maximum sustained winds are near 50 mph, and Eta should become a remnant low on Thursday.
- Eta will turn west-northwestward and accelerate through Thursday morning. A turn toward the north and northeast is expected Thursday night and Friday.
- The remnants will redevelop in the western Caribbean Friday or Saturday, with Eta regaining tropical storm strength. *However, the details on the track and intensity will remain uncertain until the system moves back over water Friday.*



Key Messages

From the National Hurricane Center



Key Messages for Tropical Storm Eta

Advisory 15: 4:00 AM EST Wed Nov 04, 2020



1. Through Friday evening, heavy rainfall from Eta will lead to catastrophic, life-threatening flash flooding and river flooding across portions of Central America, along with landslides in areas of higher terrain. Flash and river flooding is also possible across Jamaica, southeast Mexico, El Salvador, southern Haiti, and the Cayman Islands.

2. Eta is forecast to regain tropical storm strength before it moves across portions of Cuba and approaches southern Florida this weekend. While it is too soon to determine the exact timing, magnitude, and location of possible impacts from wind and rainfall, interests in Cuba, southern Florida and the Florida Keys should monitor the progress of Eta through the week.

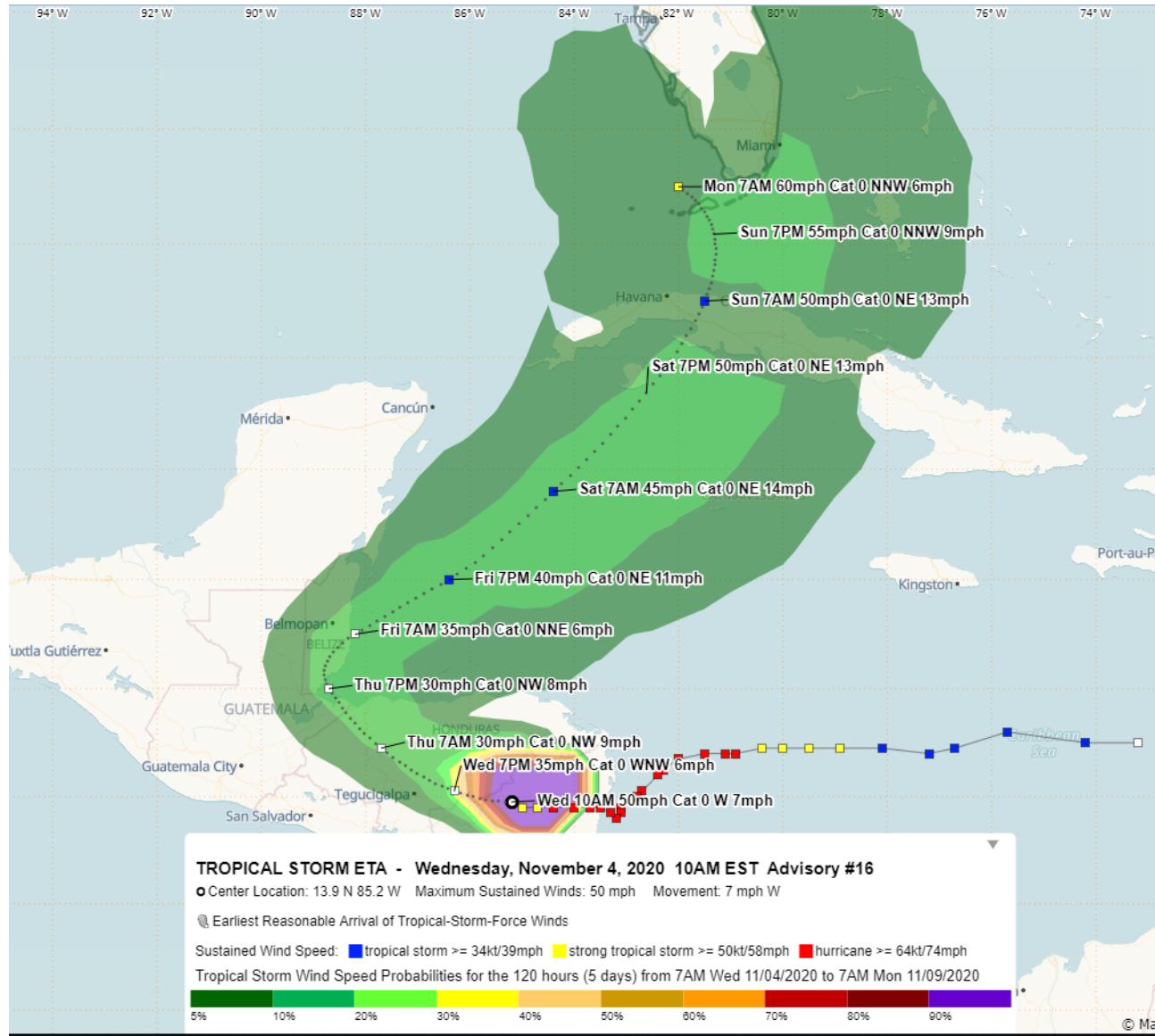


For more information go to hurricanes.gov



Wind Speed Probabilities

Tropical Storm Force Winds (>39 mph)



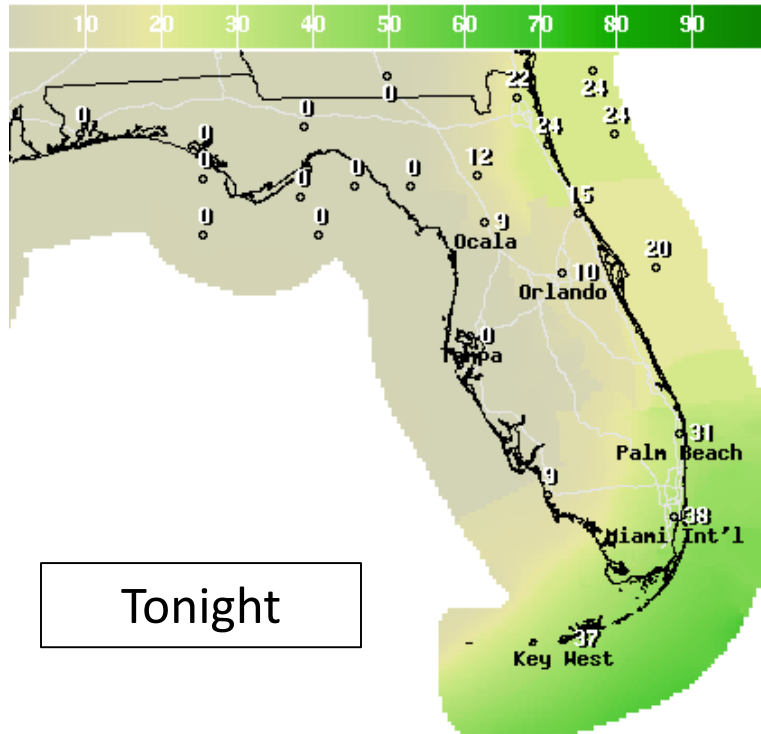
Key West: 14%
Marathon: 14%
Naples: 9%
Ft. Myers: 6%
Miami: 7%
Ft. Lauderdale: 11%
West Palm Beach: 9%

Tropical storm force winds could begin as early as Saturday night in the Keys and South Florida, but would most likely begin sometime on Sunday.

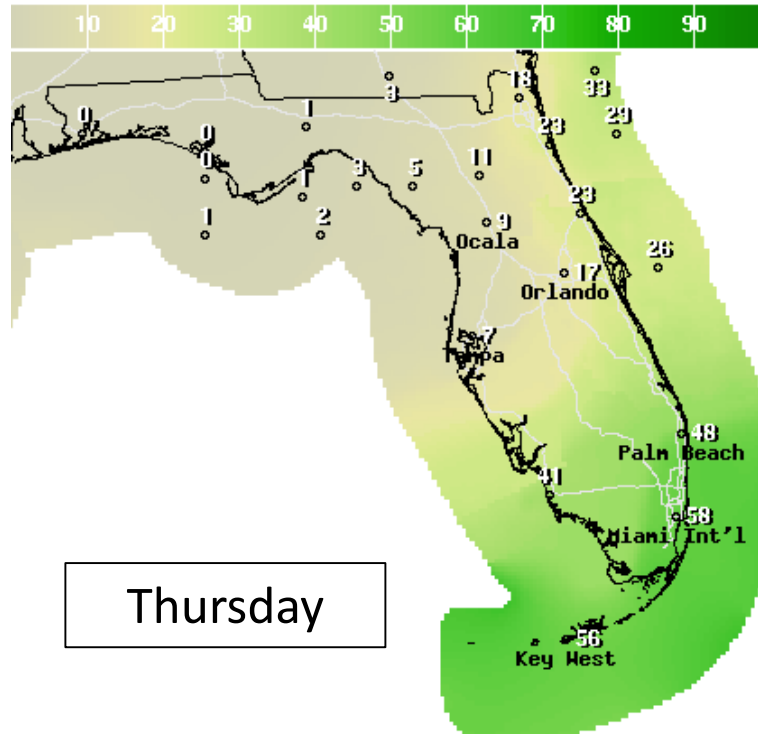


Forecast Rain Chances

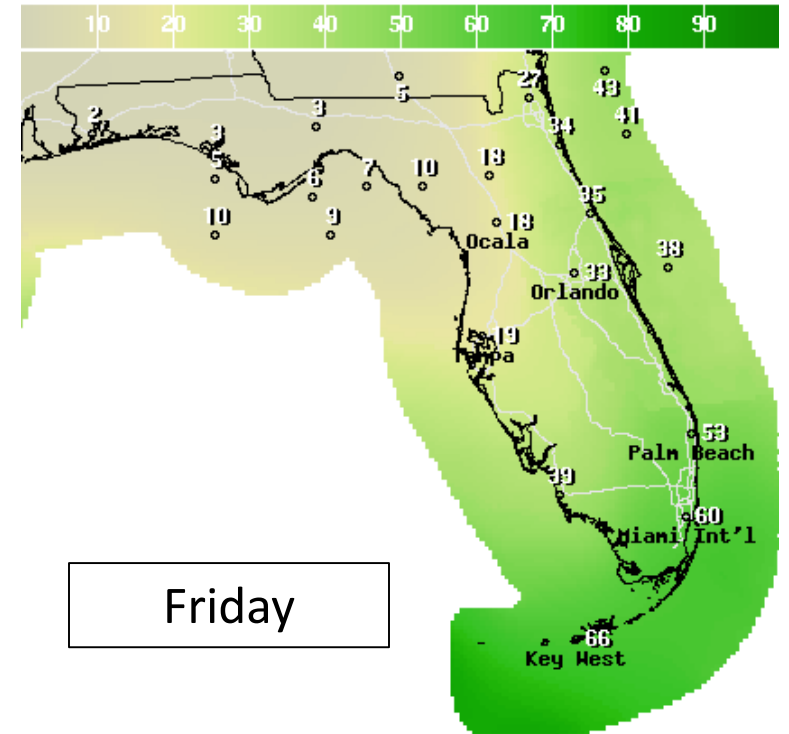
UNRELATED TO TROPICAL STORM ETA



12Hr Prob.Precip(%) Ending Thu Nov 05 2020 7AM EST
(Thu Nov 05 2020 12Z)
National Digital Forecast Database
14z issuance Graphic created-Nov 04 9:20AM EST



12Hr Prob.Precip(%) Ending Thu Nov 05 2020 7PM EST
(Fri Nov 06 2020 00Z)
National Digital Forecast Database
14z issuance Graphic created-Nov 04 9:20AM EST



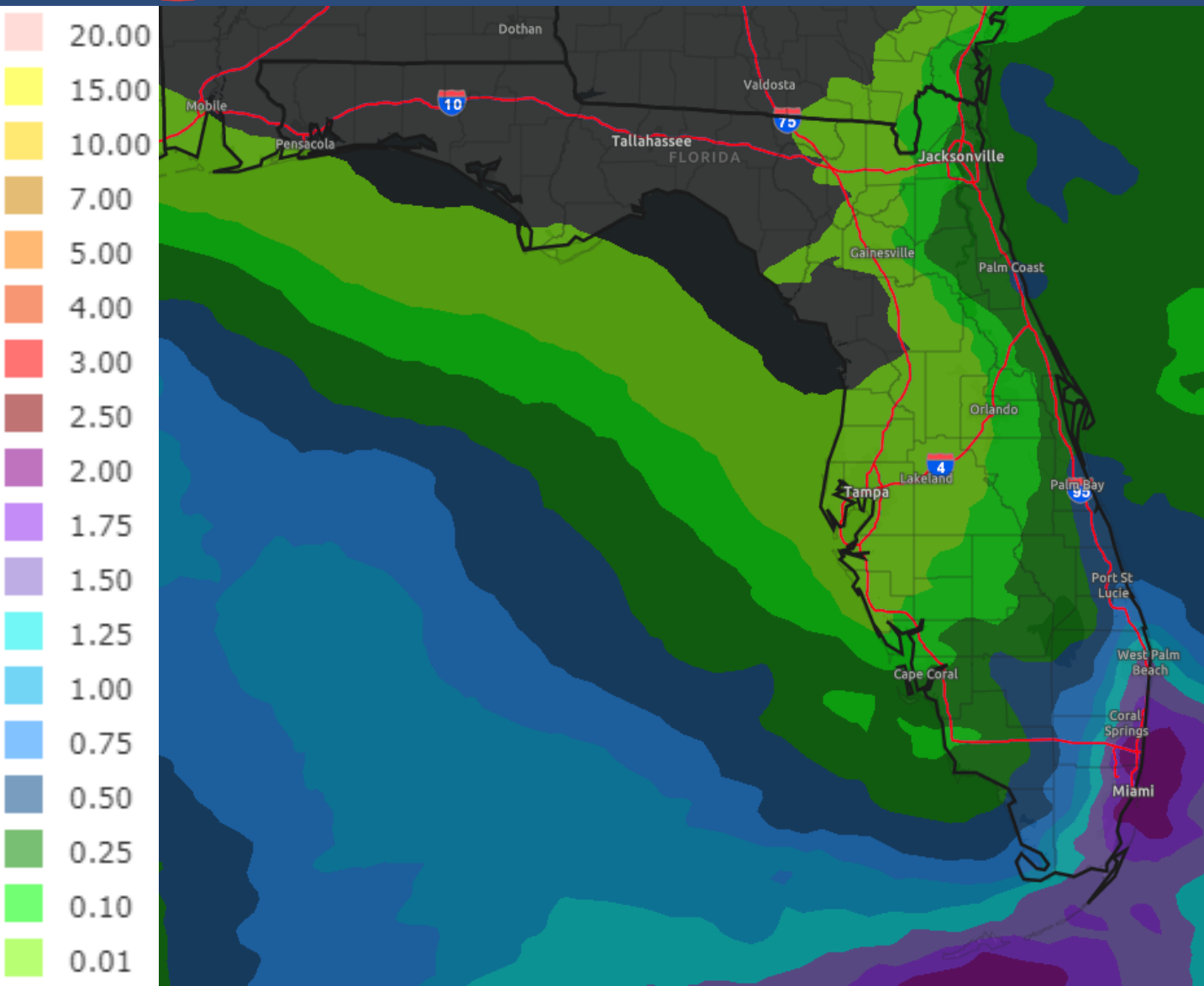
12Hr Prob.Precip(%) Ending Fri Nov 06 2020 7PM EST
(Sat Nov 07 2020 00Z)
National Digital Forecast Database
14z issuance Graphic created-Nov 04 9:20AM EST

A stalled front will bring additional moisture back to the Keys and South Florida tonight, then spread northward into Central Florida and the East Coast later this week. This is well in advance of any impacts Tropical Storm Eta.



Rainfall Totals Next 3 Days

UNRELATED TO TROPICAL STORM ETA



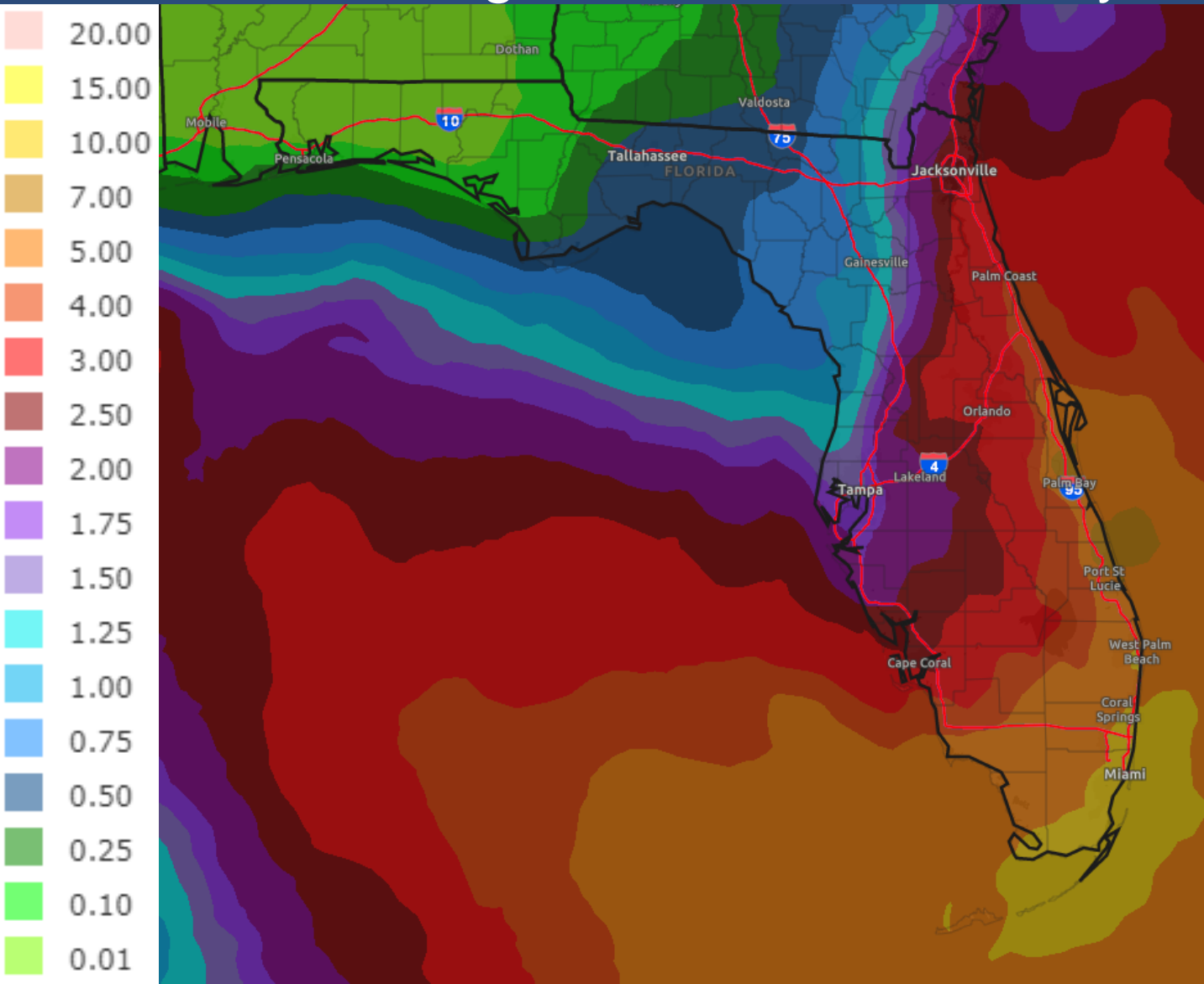
The stalled front will bring a potential for heavy rainfall tonight through the end of the week.

Rainfall totals of 1-3" are possible through the end of the week with locally higher totals of 4-6" possible. This could result in some localized flash flooding.



Rainfall Totals Next 7 Days

Ending 7 AM ET Wednesday



As Eta approaches this weekend into early next week, additional heavy rainfall is likely across South Florida and the Keys, gradually spreading northward into next week.

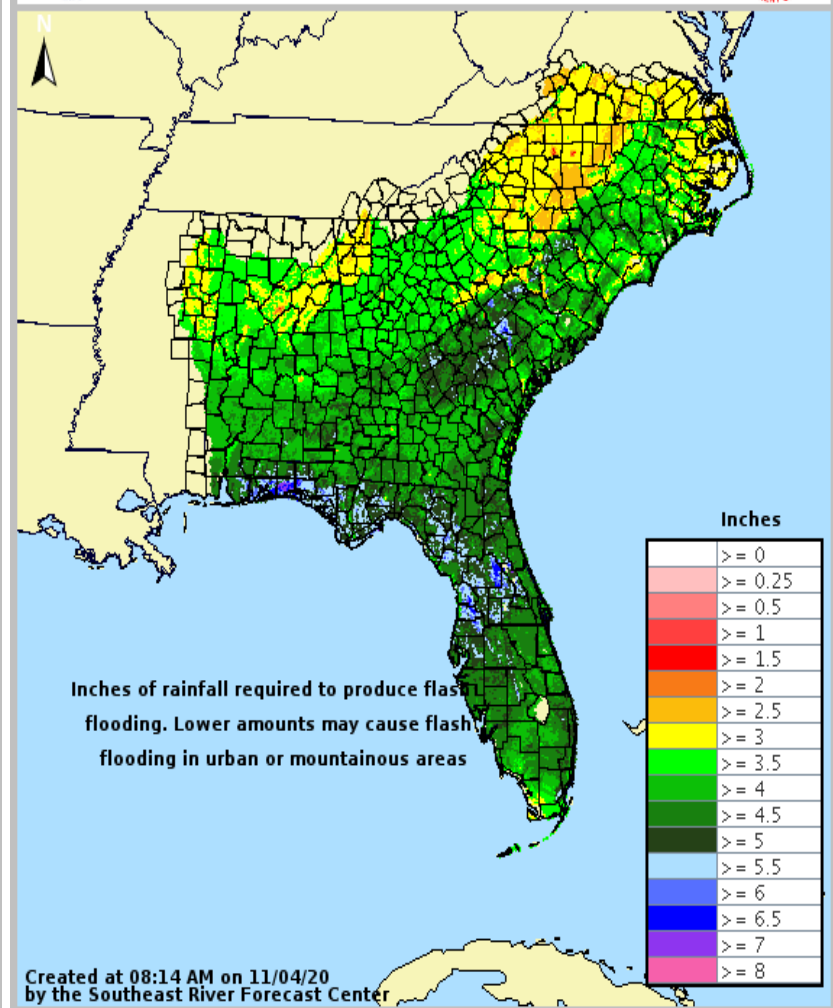
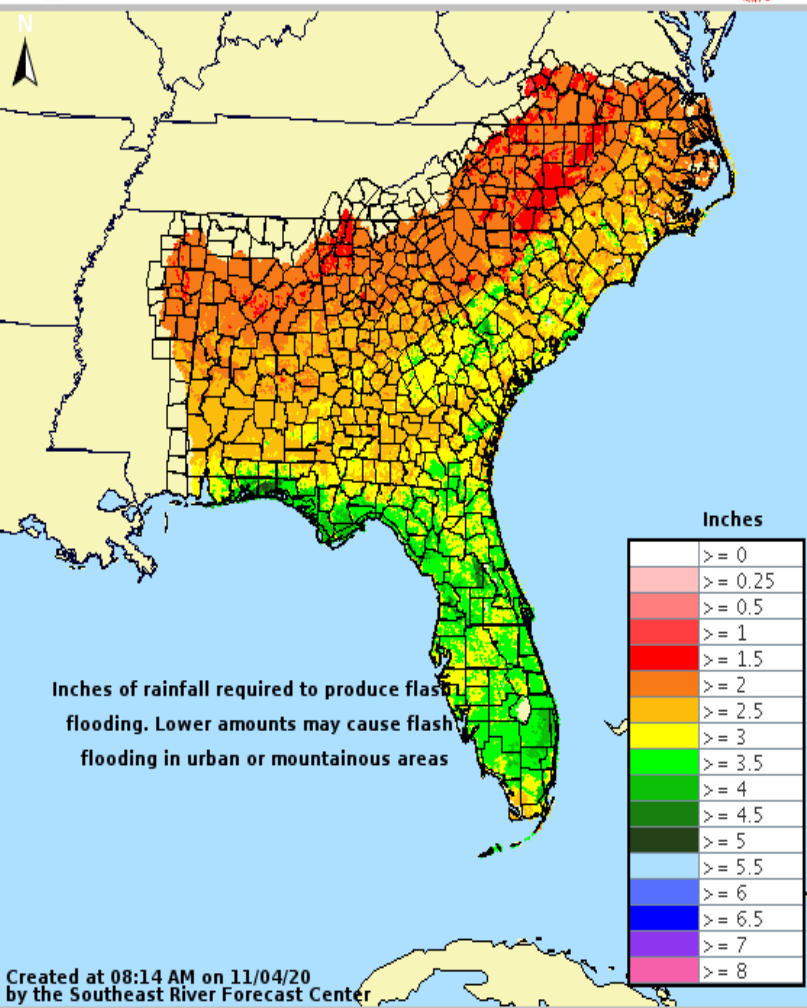
There remains considerable uncertainty in the exact placement of the heavy rainfall. However, it appears that much of Eta's rainfall could be to the east of its center.

Combining rainfall from Eta and the stalled front, a widespread 6-12" of rain is possible along the East Coast and into South Florida. Localized areas in South Florida and the Keys could see 15"+ of rain.



Flash Flood Guidance

How Much Rain is Needed to Create Flash Flooding?



South Florida remains very wet from rainfall over the last several months. This area remains very prone to flooding.

It will take about 2-4" of rain within 1 hour or 3-5" of rain within 6 hours to cause flash flooding in these areas.



Overall Summary

****Note: Due to Daylight Saving Time, advisories from the National Hurricane Center are now issued one hour earlier than usual. For example, the next full advisory on Eta will be at 4pm ET/3 PM CT with an intermediate intensity advisory at 1pm ET/12pm CT.****

Tropical Storm Eta

- The center of Eta is located well inland over Nicaragua and moving west at 7 mph.
- Eta will turn west-northwestward later today or tonight, then turn north or northeast Thursday night into Friday.
- Maximum sustained winds are near 50 mph, and Eta is expected to degenerate into a remnant low on Thursday.
- The remnants will redevelop in the western Caribbean Friday or Saturday, with Eta regaining tropical storm strength. *However, the details on the track and intensity will remain uncertain until the system moves back over water Friday.*

Florida Outlook:

- Prior to any impacts from Eta, locally heavy rainfall in association with a stalled front will be possible across South Florida and the Keys through the end of the week. 1-3" of rain, locally 4-6" will be possible through Saturday.
- As Eta approaches, heavy rainfall will become likely again across South Florida and the Keys. 7-day rainfall totals (including the heavy rain this week) could approach a widespread 6-12" with localized totals of 15"+.
- Additional impacts, such as tornadoes, storm surge, and winds, are still uncertain.
- Beyond 5 days, the system may need to be monitored farther north in the state, but this remains highly uncertain.

The next tropics packet will be issued this afternoon with the 4PM ET advisory. For the latest information on the tropics, please visit the National Hurricane Center website at www.hurricanes.gov.



TROPICAL UPDATE



Created by:

Cameron Young, Assistant State Meteorologist

Cameron.Young@em.myflorida.com

State Meteorological Support Unit

Florida Division of Emergency Management

Users wishing to subscribe (approval pending) to this distribution list, register at:

https://public.govdelivery.com/accounts/FLDEM/subscriber/new?topic_id=SERT_Met_Tropics.

Other reports available for subscription are available at:

<https://public.govdelivery.com/accounts/FLDEM/subscriber/new?preferences=true>