



# TROPICAL UPDATE



4:00 PM EST

Wednesday, November 4, 2020

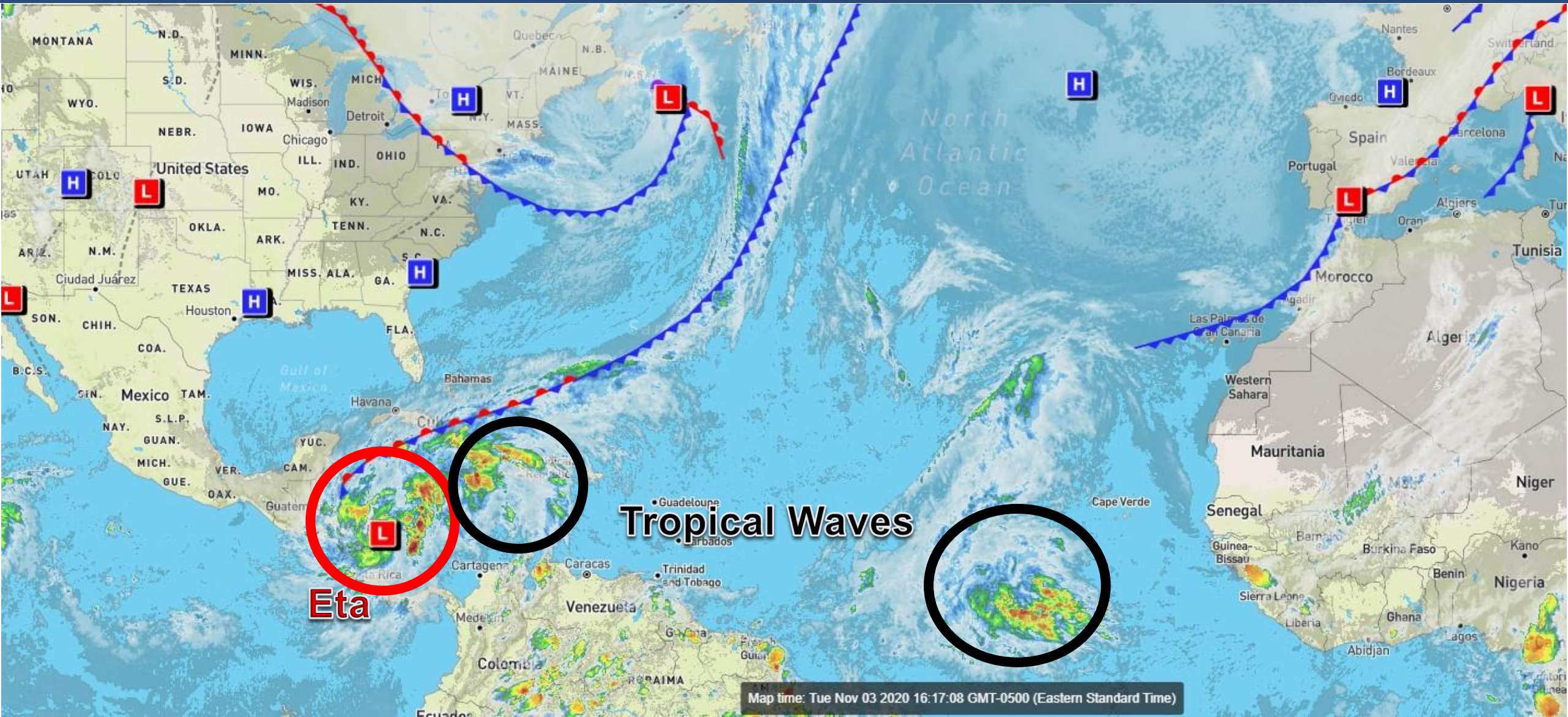
Hurricane Eta

This update is intended for government and emergency response officials, and is provided for informational and situational awareness purposes only. Forecast conditions are subject to change based on a variety of environmental factors. For additional information, or for any life safety concerns with an active weather event please contact your County Emergency Management or Public Safety Office, local National Weather Service forecast office, or visit the National Hurricane Center website at [www.hurricanes.gov](http://www.hurricanes.gov).



# Atlantic Basin Satellite Image

Chance of development: — None — Low — Medium — High





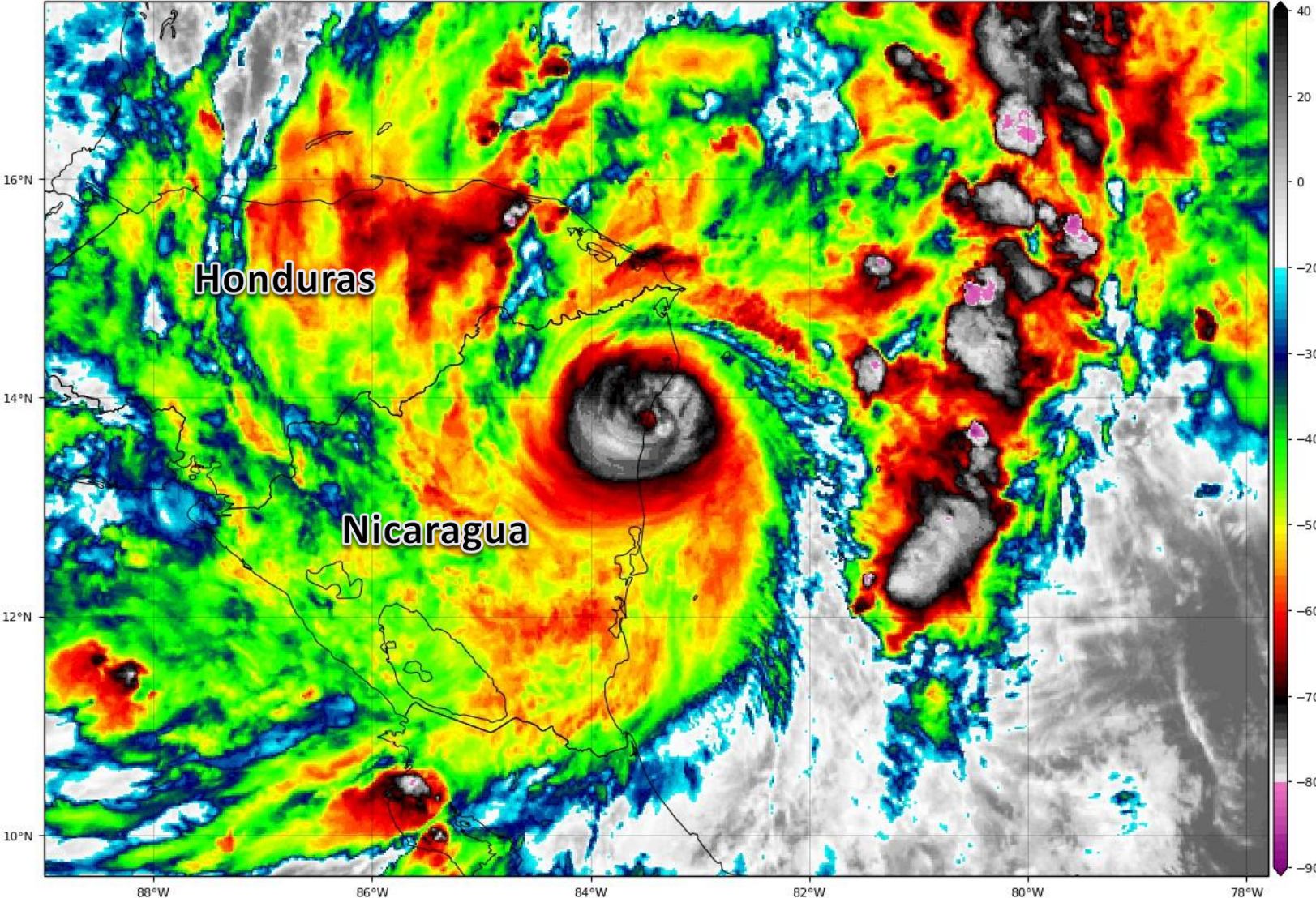


# Satellite Imagery

## Hurricane Eta – Central Caribbean Sea

GOES-16 Channel 13 (IR) Brightness Temperature (°C) at 21:05Z Nov 03, 2020

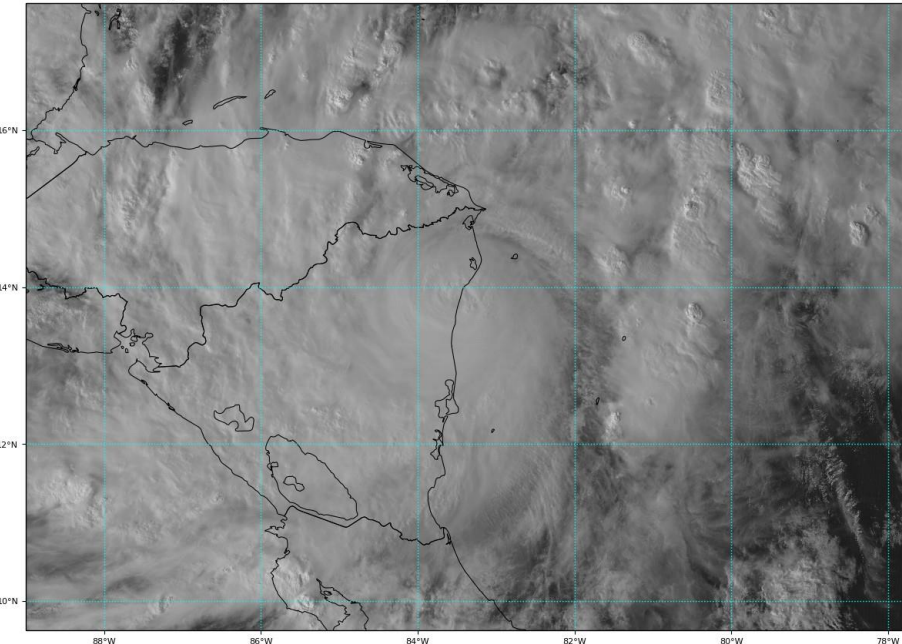
TROPICALTIDBITS.COM



Eta is making landfall in Nicaragua as a Category 4 hurricane. It will rapidly weaken over the next 24 hours as it moves inland over the mountains.

GOES-16 Channel 2 (visible) Reflectance at 21:05Z Nov 03, 2020

TROPICALTIDBITS.COM

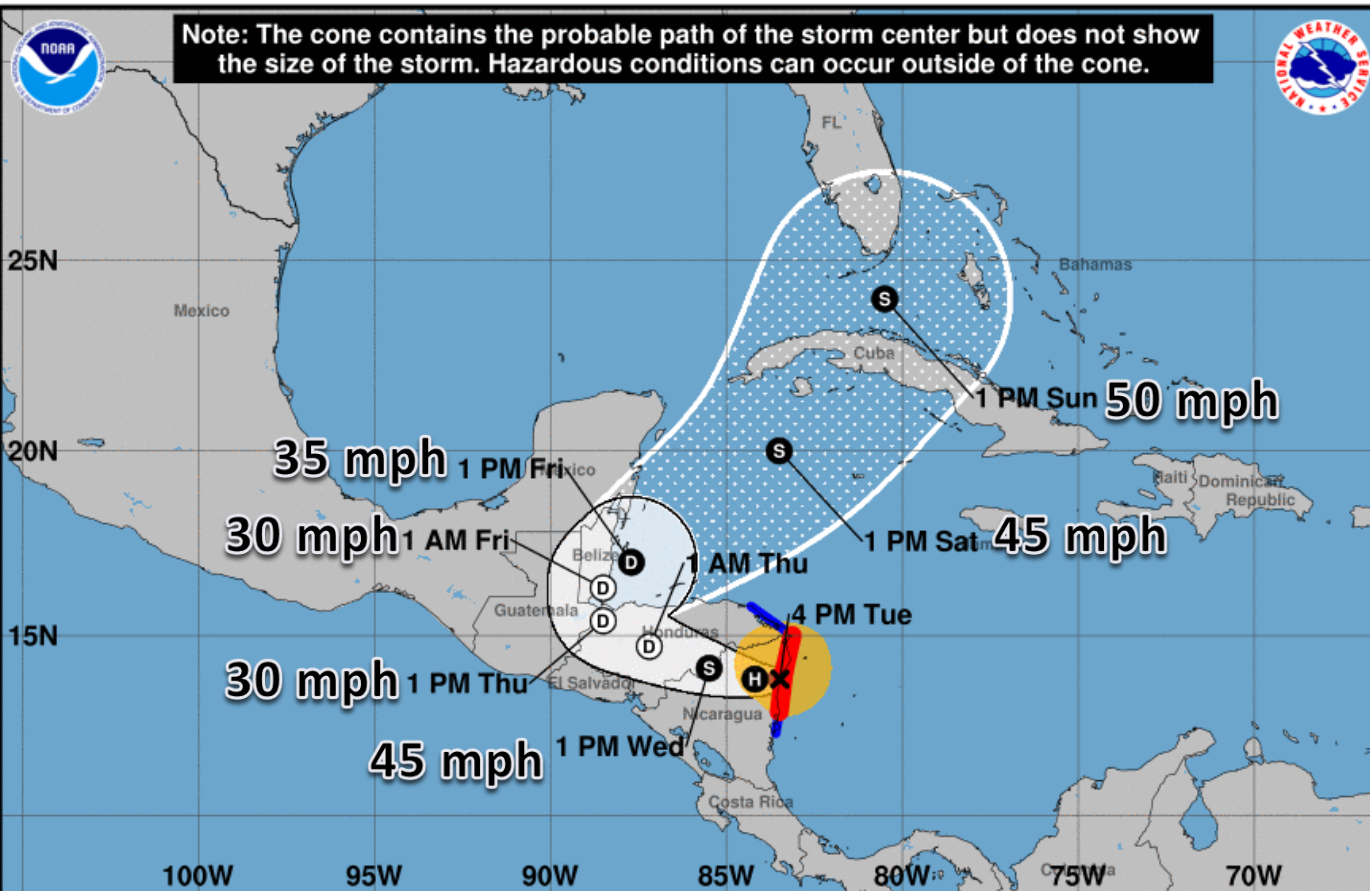






# Official Forecast Track

## From the National Hurricane Center – Hurricane Eta



- Eta is making landfall in Nicaragua as a category 4 hurricane with maximum sustained winds of 140 mph.
- The center of Eta is located near Puerto Cabezas, Nicaragua and moving west at 5 mph.
- Eta will continue westward across Central America over the next couple of days, with the remnants making a turn to the north over the western Caribbean on Friday.
- The remnants will redevelop in the western Caribbean this weekend, with Eta regaining tropical storm strength. *However, the details on the track and intensity will remain uncertain until the system moves back over water Friday.*

**Hurricane Eta**  
Tuesday November 03, 2020  
4 PM EST Advisory 13  
NWS National Hurricane Center

**Current information: x**  
Center location 13.8 N 83.5 W  
Maximum sustained wind 140 mph  
Movement W at 5 mph

**Forecast positions:**  
● Tropical Cyclone ○ Post/Potential TC  
Sustained winds: D < 39 mph  
S 39-73 mph H 74-110 mph M > 110 mph

**Potential track area:**

Day 1-3 Day 4-5

**Watches:**

Hurricane Trop Stm

**Warnings:**

Hurricane Trop Stm

**Current wind extent:**

Hurricane Trop Stm



# Key Messages

## From the National Hurricane Center



### Key Messages for Hurricane Eta Advisory 13: 4:00 PM EST Tue Nov 03, 2020



1. Catastrophic wind damage is expected during the next few hours as Eta's eyewall moves onshore along the northeastern coast of Nicaragua.

2. A catastrophic and life-threatening storm surge, along with destructive waves, are expected along portions of the northeastern coast of Nicaragua near and to the north of where the center has crossed the coast. Water levels could reach as high as 14 to 21 feet above normal tide levels in some parts of the hurricane warning area.

3. Through Friday evening, heavy rainfall from Eta will lead to catastrophic, life-threatening flash flooding and river flooding across portions of Central America, along with landslides in areas of higher terrain. Flash and river flooding is also possible across Jamaica, southeast Mexico, El Salvador, southern Haiti, and the Cayman Islands.

4. Eta is forecast to regain tropical storm strength as it moves across portions of Cuba and approaches southern Florida this weekend. While it is too soon to determine the exact timing, magnitude, and location of possible impacts from wind and rainfall, interests in Cuba, southern Florida and the Florida Keys should monitor the progress of Eta through the week.

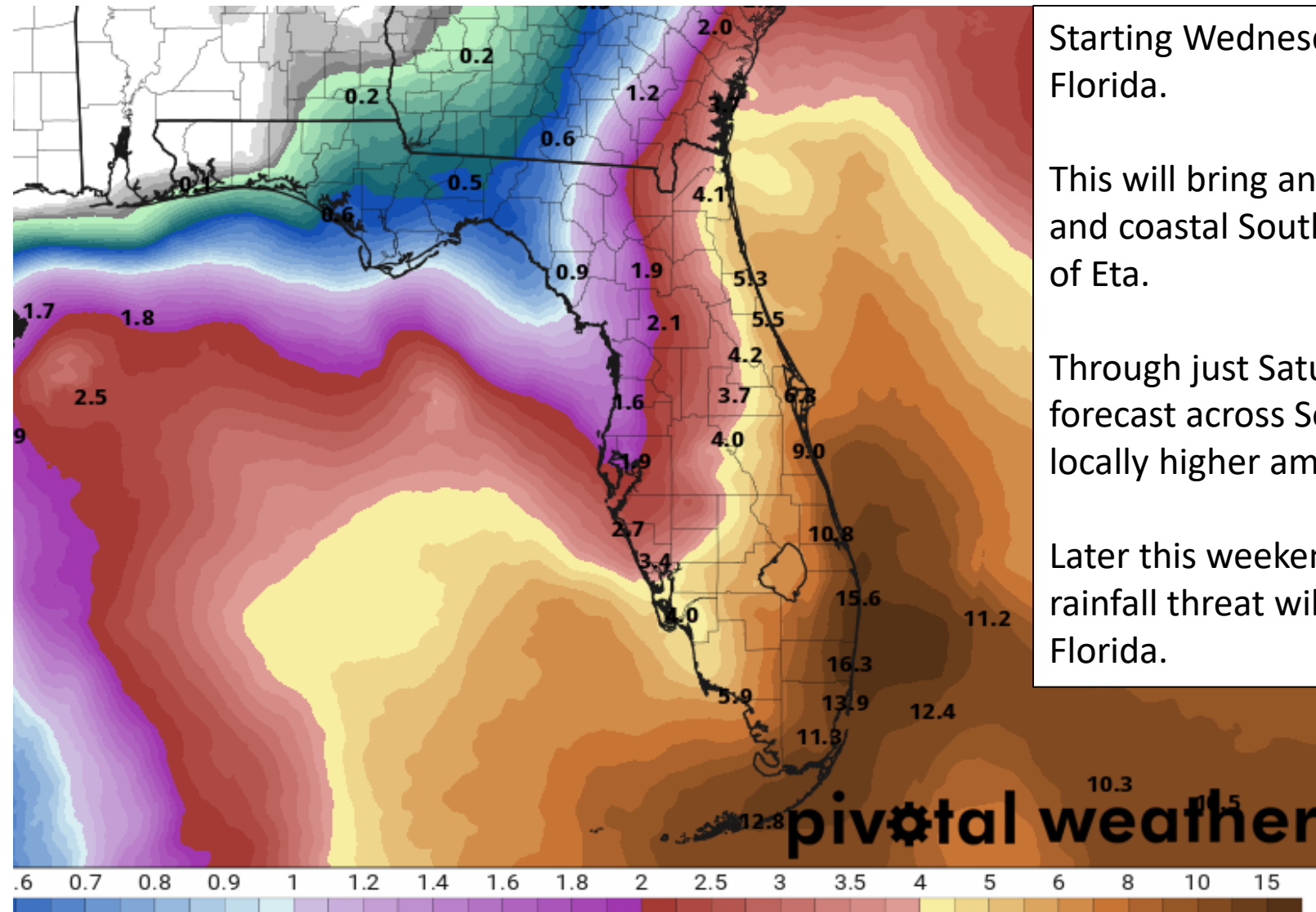


For more information go to [hurricanes.gov](https://hurricanes.gov)



# Rainfall Totals Next 7 Days

Ending 7 PM ET Tuesday



Starting Wednesday night, another front will stall near South Florida.

This will bring another heavy rainfall event to the Florida Keys and coastal Southeast Florida, starting well ahead of the arrival of Eta.

Through just Saturday night, a widespread 4-8" of rain is forecast across Southeast Florida and the Florida Keys with locally higher amounts.

Later this weekend and early next week as Eta arrive, the heavy rainfall threat will spread northward in Central and Northeast Florida.





# Overall Summary

**\*\*Note: Due to Daylight Saving Time, advisories from the National Hurricane Center are now issued one hour earlier than usual. For example, the next full advisory on Eta will be at 4pm ET/3 PM CT with an intermediate intensity advisory at 1pm ET/12pm CT.\*\***

## Hurricane Eta

- Eta is making landfall in Nicaragua as a category 4 hurricane with maximum sustained winds of 140 mph.
- The center of Eta is located near Puerto Cabezas, Nicaragua and moving west at 5 mph.
- Eta will continue westward across Central America over the next couple of days, with the remnants making a turn to the north over the western Caribbean on Friday.
- The remnants will redevelop in the western Caribbean this weekend, with Eta regaining tropical storm strength. *However, the details on the track and intensity will remain uncertain until the system moves back over water Friday.*

## Florida Outlook:

- Impacts from Eta are now expected over the upcoming weekend in the Peninsula.
- South Florida and the Florida Keys are in the 5-day forecast cone from the National Hurricane Center.
- It is too early to determine exact impacts, but gusty winds and heavy rainfall seem most likely at this time.
- Starting as early as Thursday, heavy rainfall will begin well ahead of Eta in Southeast Florida and across the Florida Keys. Rainfall totals could exceed 8" and flash/urban flooding is possible.

The next tropics packet will be issued Wednesday morning with the 10AM ET advisory. For the latest information on the tropics, please visit the National Hurricane Center website at [www.hurricanes.gov](http://www.hurricanes.gov).



# TROPICAL UPDATE



Created by:

Michael Spagnolo, Deputy State Meteorologist

[Michael.Spagnolo@em.myflorida.com](mailto:Michael.Spagnolo@em.myflorida.com)

State Meteorological Support Unit

Florida Division of Emergency Management

Users wishing to subscribe (approval pending) to this distribution list, register at:

[https://public.govdelivery.com/accounts/FLDEM/subscriber/new?topic\\_id=SERT\\_Met\\_Tropics](https://public.govdelivery.com/accounts/FLDEM/subscriber/new?topic_id=SERT_Met_Tropics).

Other reports available for subscription are available at:

<https://public.govdelivery.com/accounts/FLDEM/subscriber/new?preferences=true>