



TROPICAL UPDATE



10:00 AM EST

Tuesday, November 3, 2020

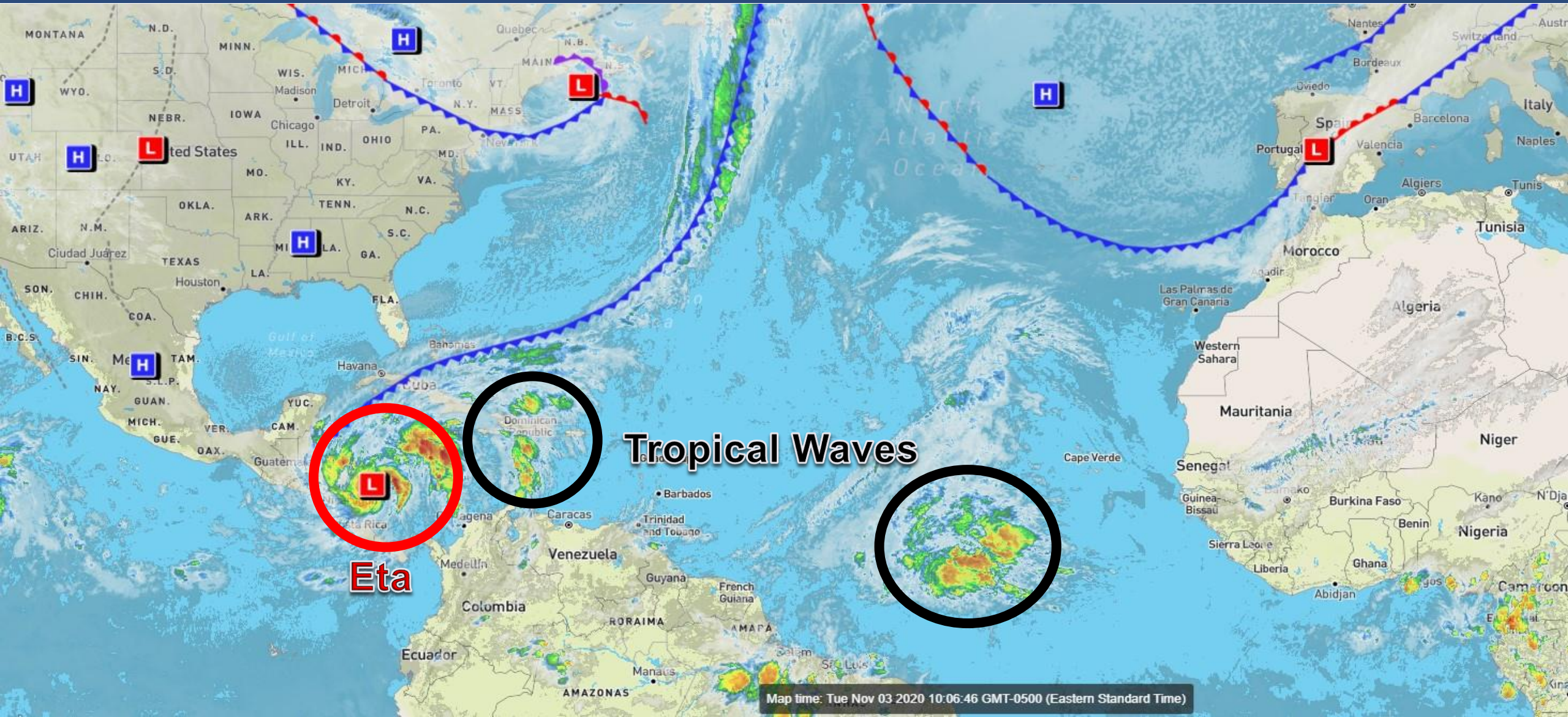
Hurricane Eta

This update is intended for government and emergency response officials, and is provided for informational and situational awareness purposes only. Forecast conditions are subject to change based on a variety of environmental factors. For additional information, or for any life safety concerns with an active weather event please contact your County Emergency Management or Public Safety Office, local National Weather Service forecast office, or visit the National Hurricane Center website at www.hurricanes.gov.



Atlantic Basin Satellite Image

Chance of development: — None — Low — Medium — High



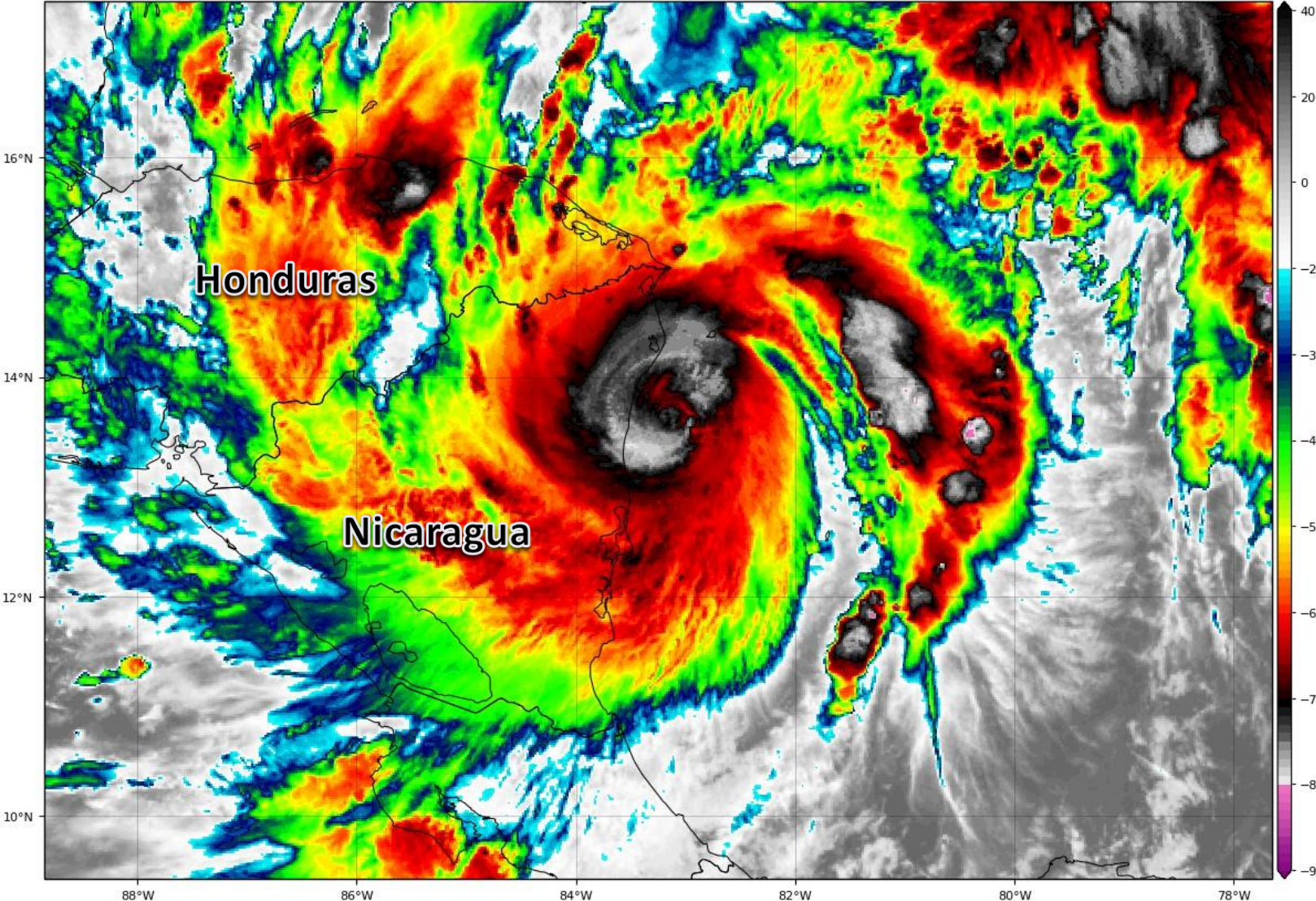


Satellite Imagery

Hurricane Eta – Central Caribbean Sea

GOES-16 Channel 13 (IR) Brightness Temperature (°C) at 14:55Z Nov 03, 2020

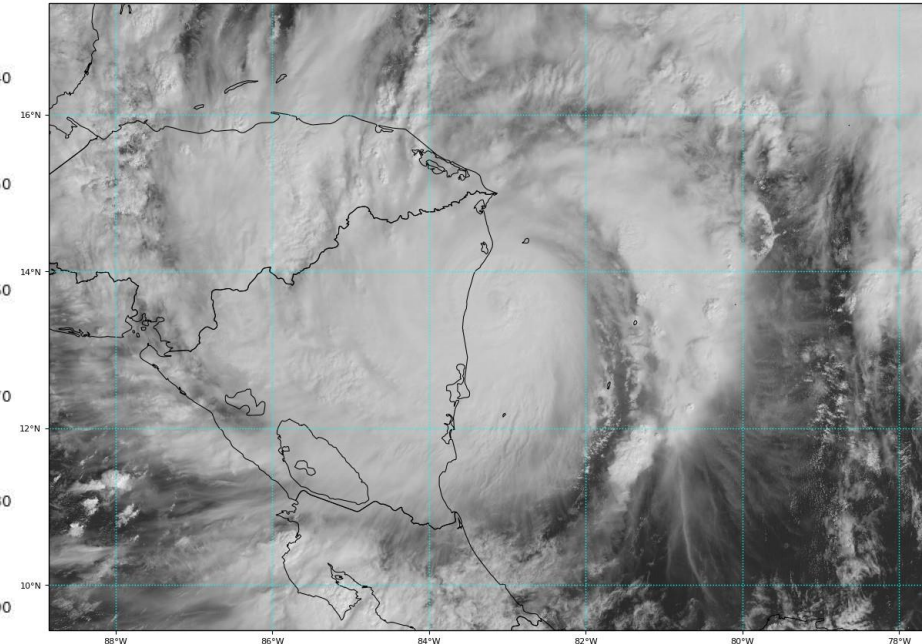
TROPICALTIDBITS.COM



After reaching peak intensity overnight and having a well-defined eye, Eta is starting to feel the impacts of land as it slowly nears the coast of Nicaragua. It is also attempting to complete a eyewall replacement cycle which causes temporary weakening.

GOES-16 Channel 2 (visible) Reflectance at 14:55Z Nov 03, 2020

TROPICALTIDBITS.COM





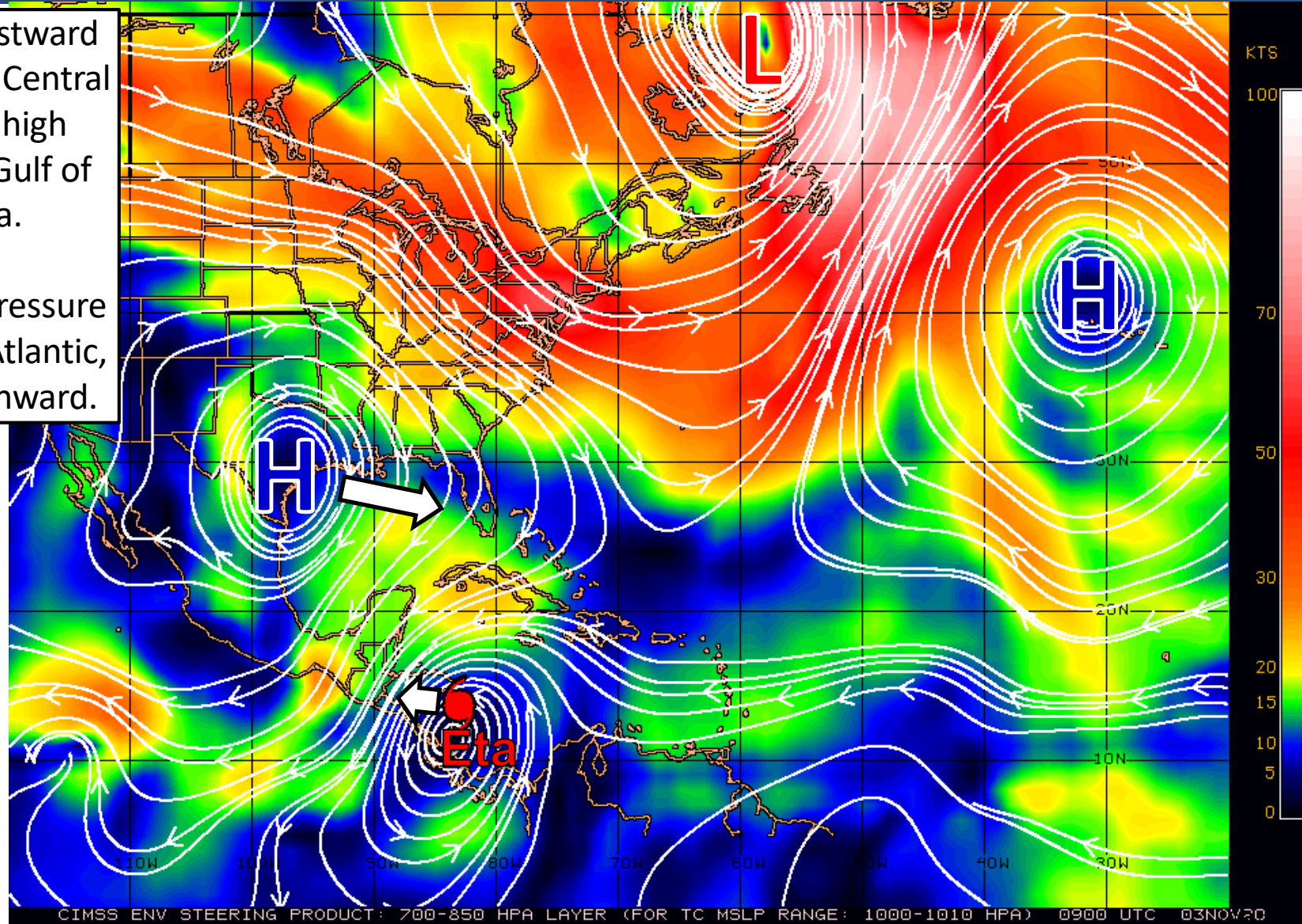
Steering Currents

What is Moving the Systems?

Color denotes the movement speed through the atmosphere and thin white lines denote direction. Tightly clustered white lines represent faster movement as well.

Eta will continue moving westward to west-southwestward over Central America as a large area of high pressure builds in over the Gulf of Mexico and over Florida.

Later this week as the high pressure system moves east into the Atlantic, Eta will get pulled back northward.



Fast Moving Storm

Fast Moving Storm

Typical Moving Storm

Slow Moving Storm

CIMSS ENV STEERING PRODUCT: 700-850 HPA LAYER (FOR TC MSLP RANGE: 1000-1010 HPA) 0900 UTC 03NOV20



Official Forecast Track

From the National Hurricane Center – Hurricane Eta



- Eta peaked in intensity overnight as a Category 4 Hurricane with maximum sustained winds of 150 mph.
- Eta remains a Category 4 with winds of 145 mph as it is close to landfall along the east coast of Nicaragua.
- The center of Eta is located about 20 miles offshore of Nicaragua, moving west-southwest at 5 mph.
- Eta will continue westward across Central America over the next couple of days, with the remnants making a turn to the north over the western Caribbean by this weekend.
- The remnants appear likely to redevelop in the western Caribbean this weekend. *However, the details on the track and intensity will remain very uncertain until the system moves back over water Friday or Saturday.*



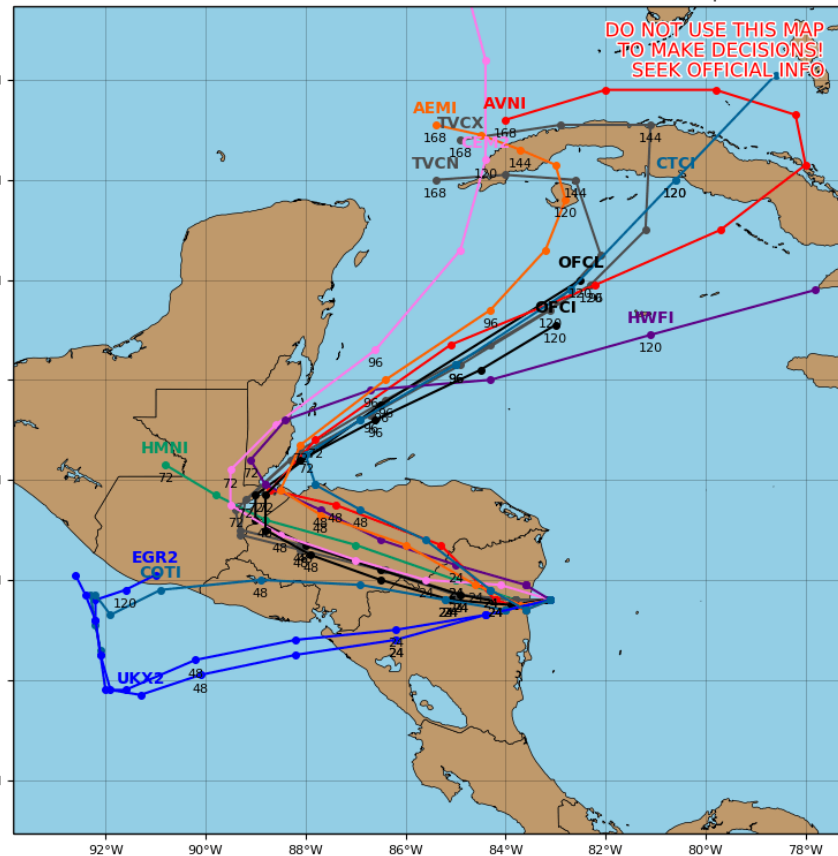
Model Forecast Tracks

Ensembles, Dynamical, and Statistical Models

Hurricane ETA Model Track Guidance

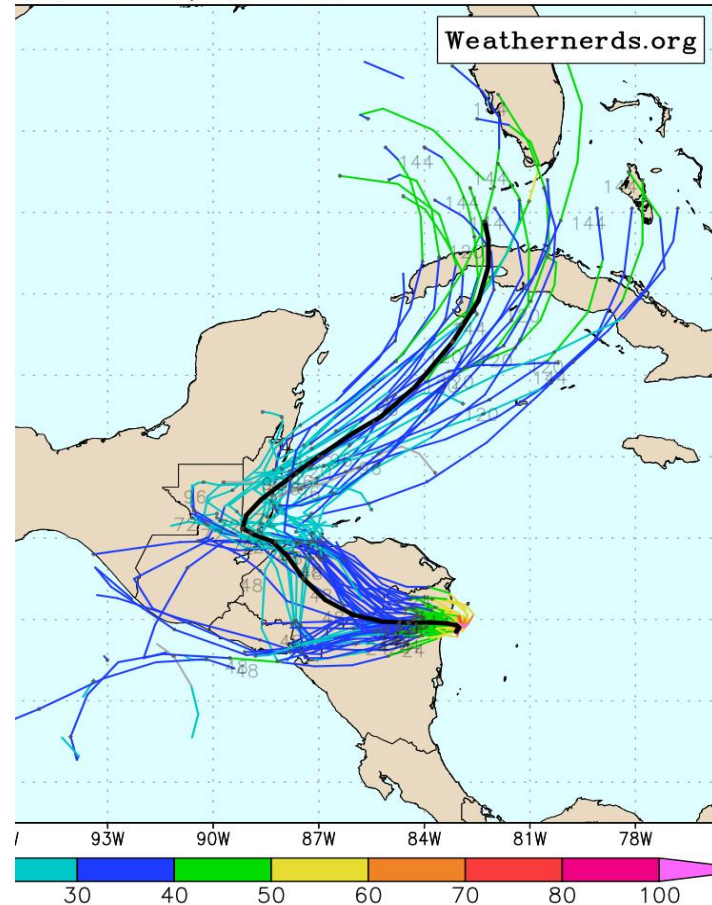
Initialized at 12z Nov 03 2020

Levi Cowan - tropicaltidbits.com

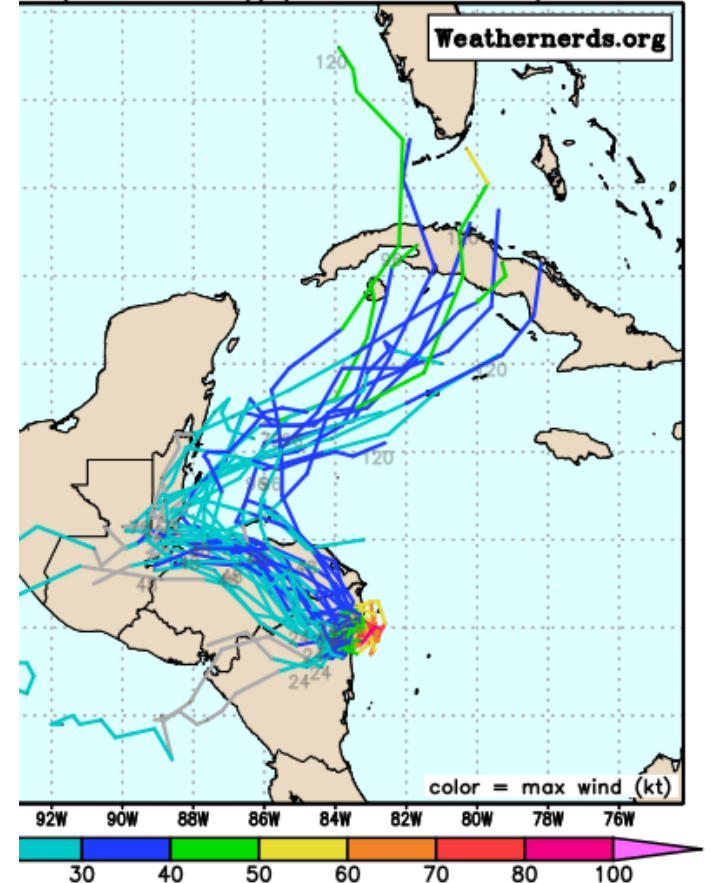


2020110306, AL29 Eta

color = r



le (0-120 h only), init: 2020110306, AL29 Eta



Models are in decent agreement about a westward track across Central America over the next 48 hours. Eta itself or the remnants appear increasingly likely to move north and northeast back into the western Caribbean by this upcoming weekend. This part of the forecast is quite uncertain, but has trended towards redevelopment in the Caribbean.

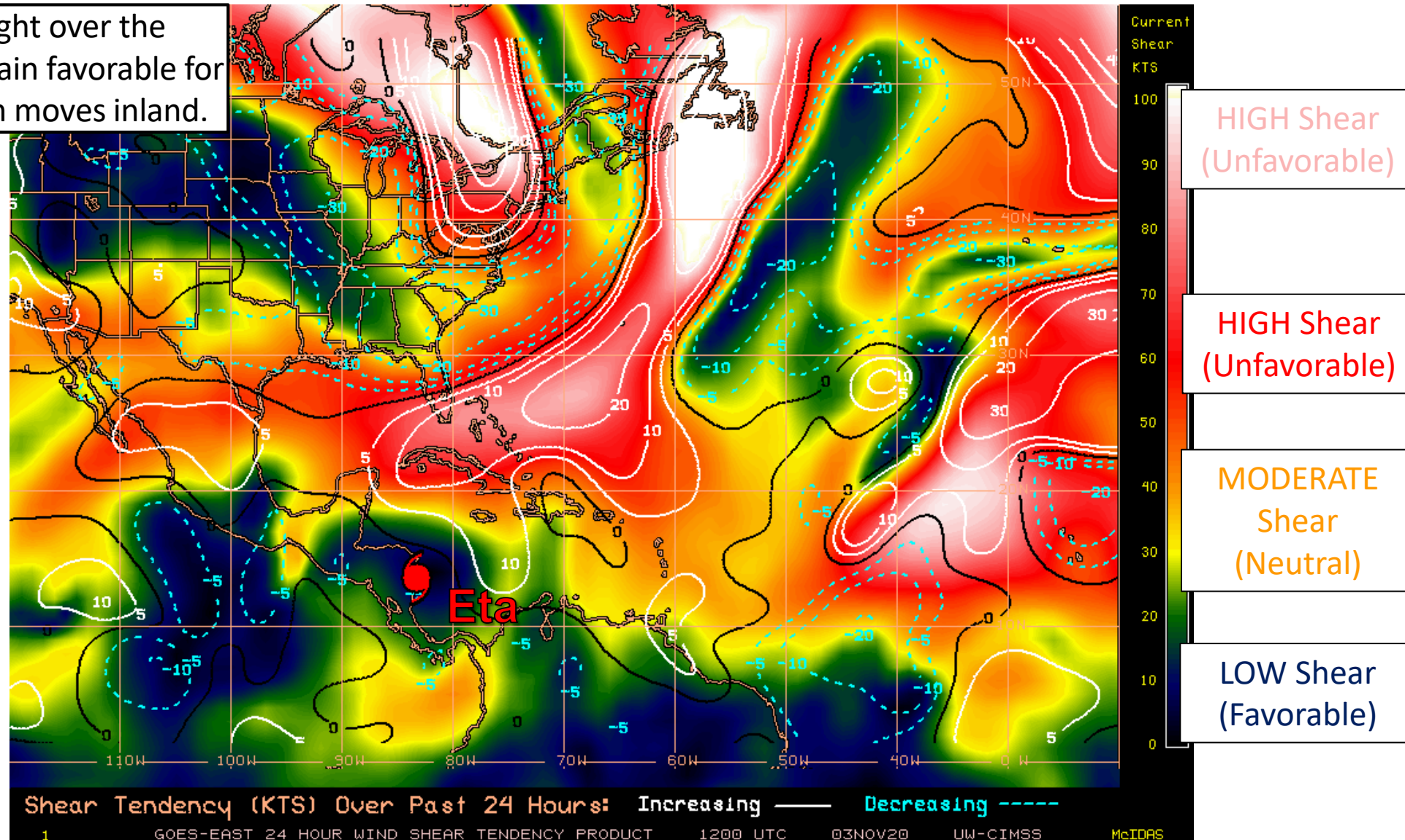


Wind Shear

Is the environment favorable for the system?

Color denotes the amount of wind shear and the lines denote how it have changed over the last 24 hours (dotted lines show decreasing shear and solid lines show increasing).

Wind shear remains very light over the Caribbean, and conditions remain favorable for strengthening until the system moves inland.

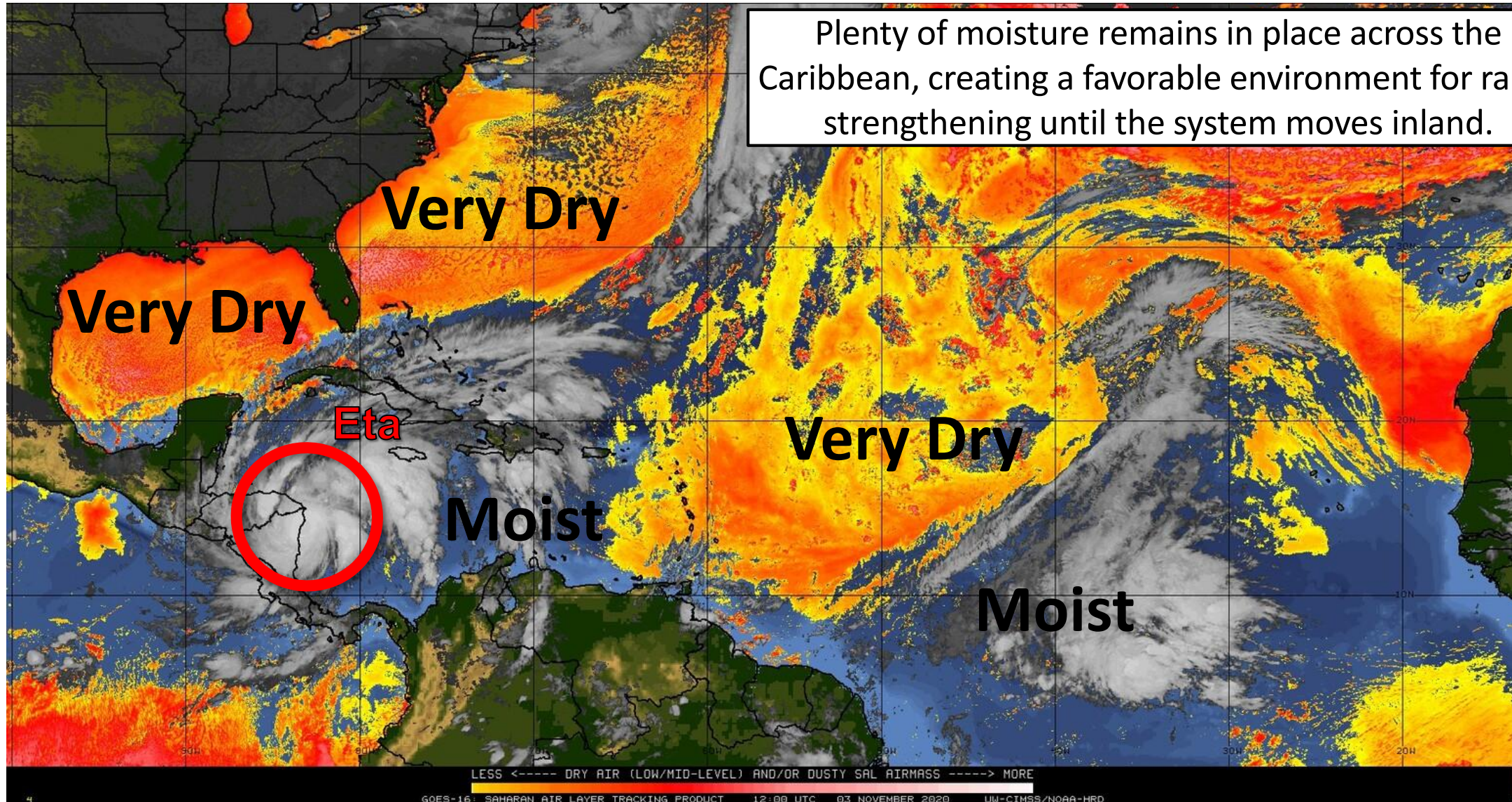




Dry Air & Saharan Dust

Is the environment favorable for the system?

Color denotes concentration of Saharan Dust or dry, stable air.



Plenty of moisture remains in place across the Caribbean, creating a favorable environment for rapid strengthening until the system moves inland.



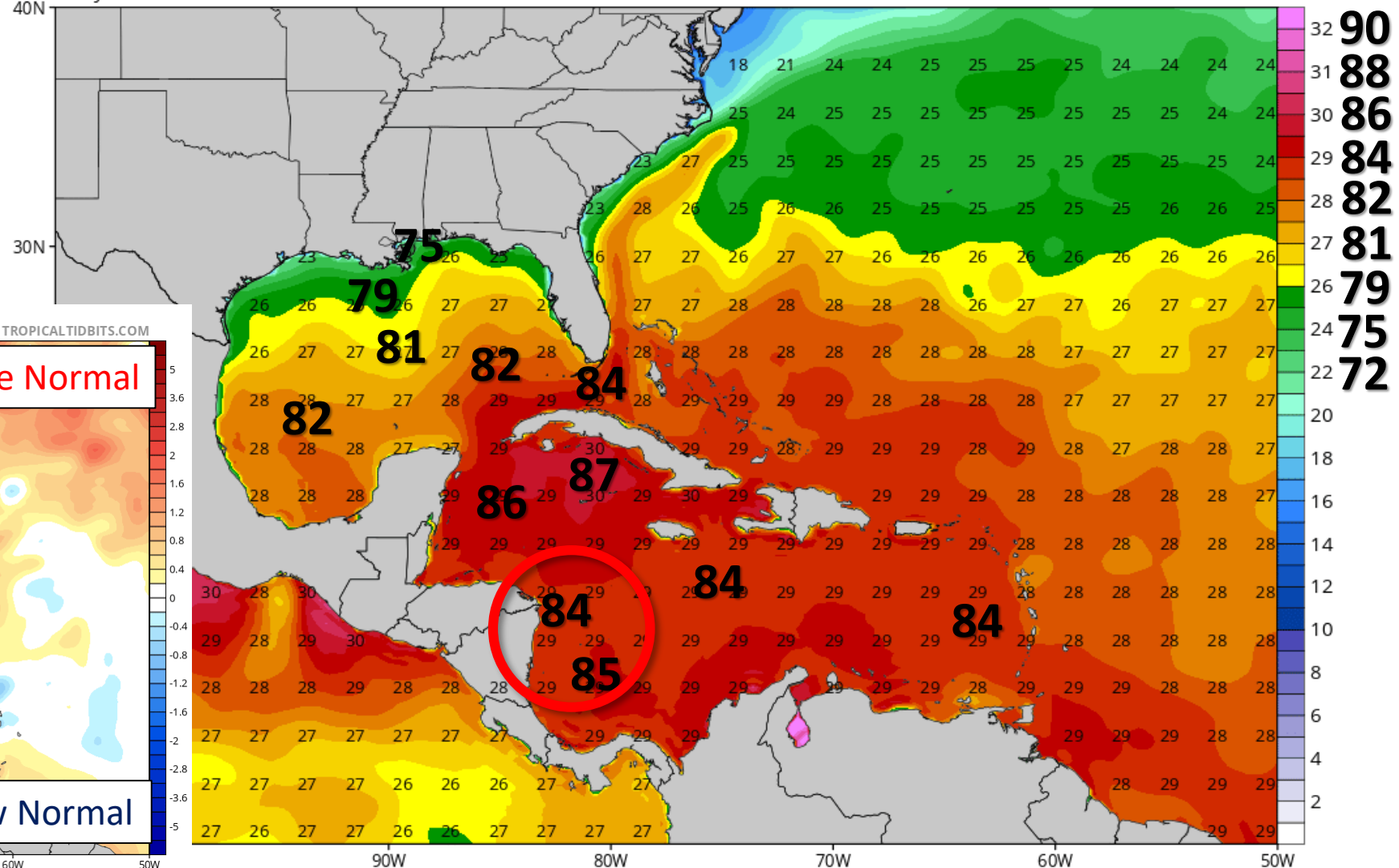
Sea Surface Temperatures & Anomalies

Is the ocean favorable for the system?

Temperatures across the Caribbean remain plenty warm- enough to support a major hurricane. These temperatures are above normal for early November.

CDAS Sea Surface Temperature (°C)

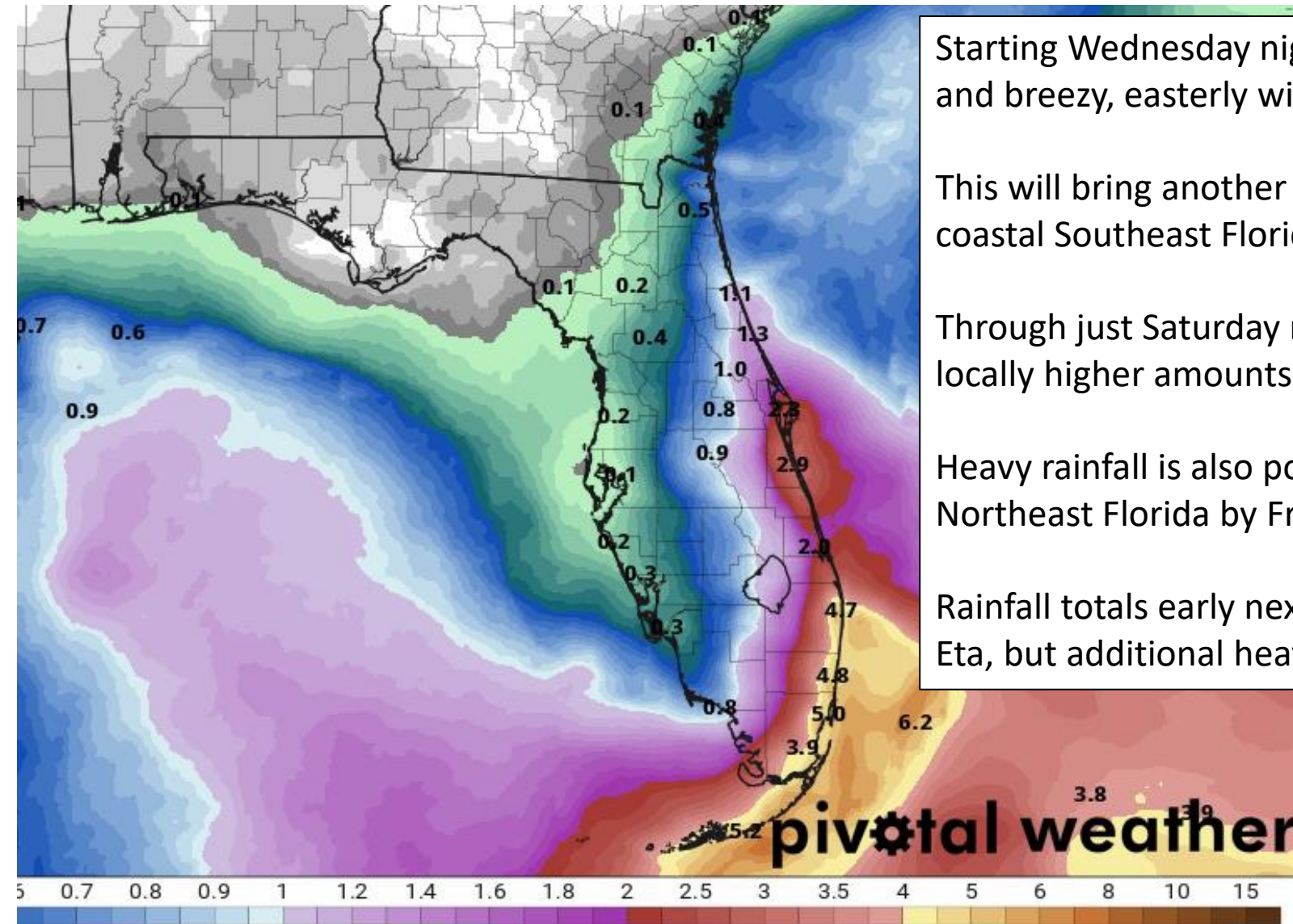
Analysis Time: 06z Nov 03 2020





Rainfall Totals Next 5 Days

Ending 7 AM ET Sunday – NOT DIRECTLY RELATED TO ETA



Starting Wednesday night, another front will stall near South Florida and breezy, easterly winds will again develop.

This will bring another heavy rainfall event to the Florida Keys and coastal Southeast Florida, much like the event at the end of October.

Through just Saturday night, a widespread 4-6" of rain is forecast with locally higher amounts.

Heavy rainfall is also possible along the Space Coast and into coastal Northeast Florida by Friday.

Rainfall totals early next week will be dependent on the exact track of Eta, but additional heavy rainfall is possible Sunday-Tuesday.



Overall Summary

****Note: Due to Daylight Saving Time, advisories from the National Hurricane Center are now issued one hour earlier than usual. For example, the next full advisory on Eta will be at 4pm ET/3 PM CT with an intermediate intensity advisory at 1pm ET/12pm CT.****

Hurricane Eta

- Eta peaked in intensity overnight as a Category 4 Hurricane with maximum sustained winds of 150 mph.
- Eta remains a Category 4 with winds of 145 mph as it is close to landfall along the east coast of Nicaragua.
- The center of Eta is located about 20 miles offshore of Nicaragua, moving west-southwest at 5 mph.
- Eta will continue westward across Central America over the next couple of days, with the remnants making a turn to the north over the western Caribbean by this weekend.
- The remnants appear likely to redevelop in the western Caribbean this weekend. *However, the details on the track and intensity will remain very uncertain until the system moves back over water Friday or Saturday.*

Florida Outlook:

- No impacts from Tropical Storm Eta are expected through at least the next 5 days.
- *However, given the likelihood of re-development in the western Caribbean later this week, Eta may need to be monitored heading into the upcoming weekend. The 5-day forecast cone is nearing the Florida Keys.*
- Another heavy rainfall event due to a stalled front is expected in Southeast FL/Keys starting on Thursday. Widespread rainfall totals through Saturday night of 4-6" are forecast, with locally higher amounts.

The next tropics packet will be issued Wednesday morning with the 10AM ET advisory. For the latest information on the tropics, please visit the National Hurricane Center website at www.hurricanes.gov.



TROPICAL UPDATE



Created by:

Michael Spagnolo, Deputy State Meteorologist

Michael.Spagnolo@em.myflorida.com

State Meteorological Support Unit

Florida Division of Emergency Management

Users wishing to subscribe (approval pending) to this distribution list, register at:

https://public.govdelivery.com/accounts/FLDEM/subscriber/new?topic_id=SERT_Met_Tropics.

Other reports available for subscription are available at:

<https://public.govdelivery.com/accounts/FLDEM/subscriber/new?preferences=true>