



TROPICAL UPDATE



11:00 AM EDT

Saturday, October 31, 2020

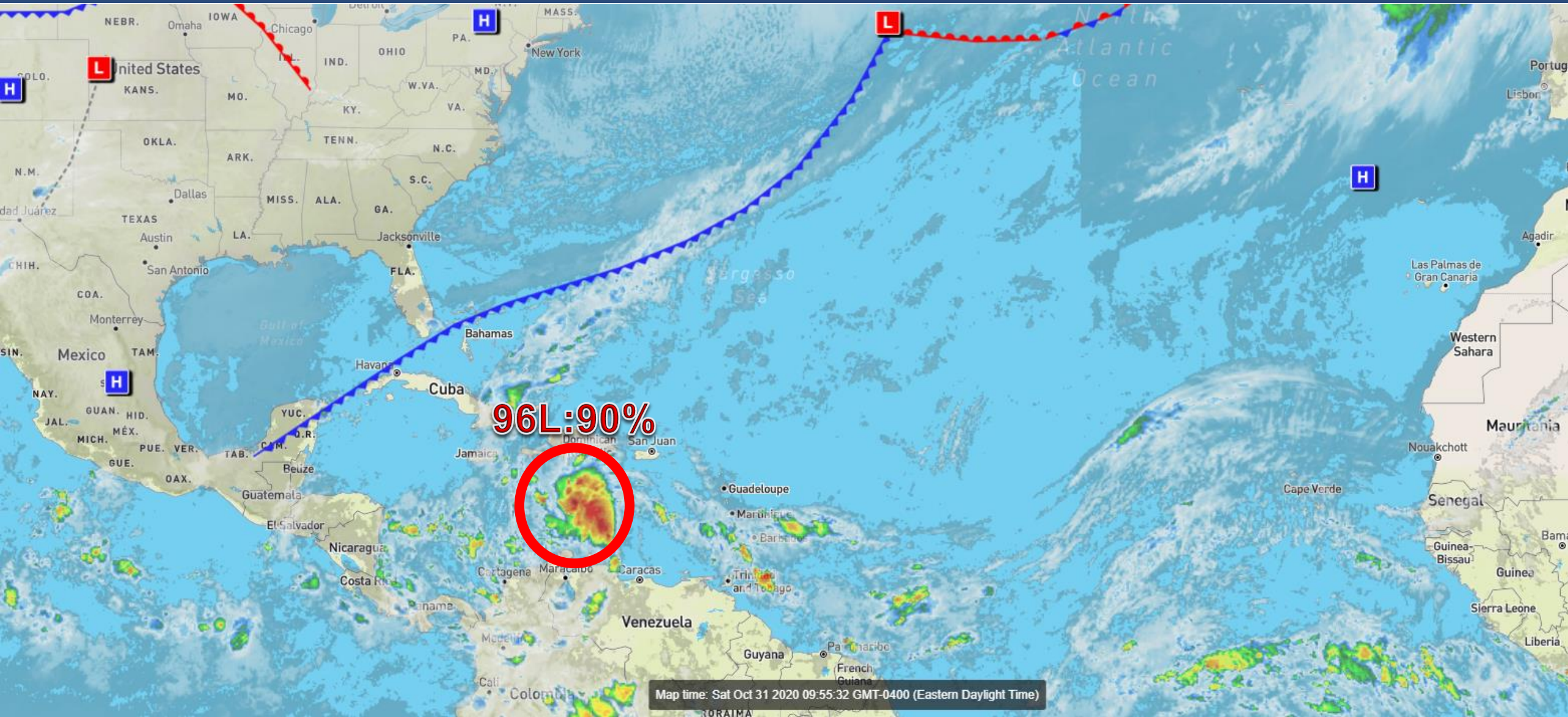
Invest 96L – Central Caribbean (90%)

This update is intended for government and emergency response officials, and is provided for informational and situational awareness purposes only. Forecast conditions are subject to change based on a variety of environmental factors. For additional information, or for any life safety concerns with an active weather event please contact your County Emergency Management or Public Safety Office, local National Weather Service forecast office, or visit the National Hurricane Center website at www.hurricanes.gov.



Atlantic Basin Satellite Image

Chance of development: — None — Low — Medium — High



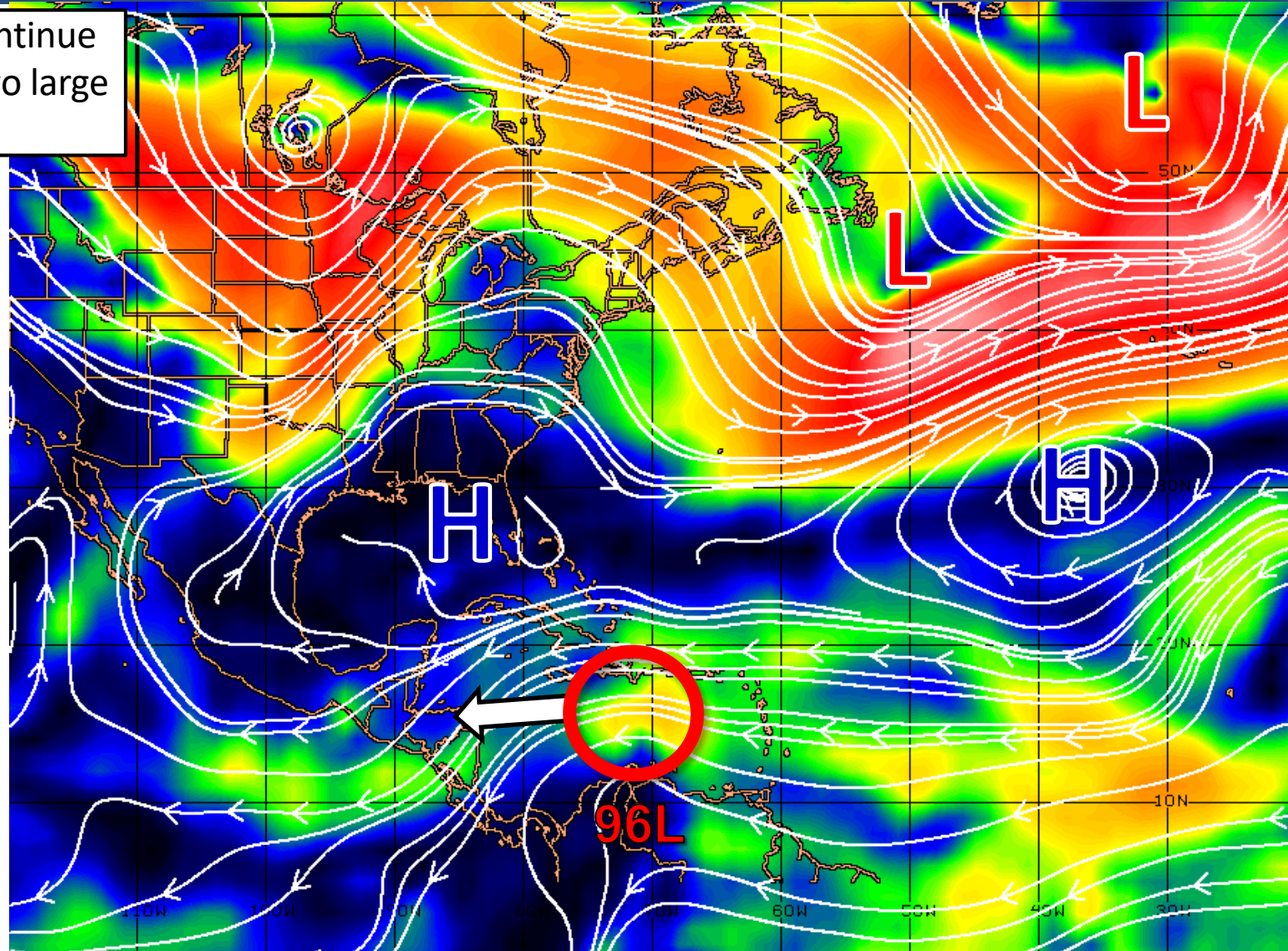


Steering Currents

What is Moving the Systems?

Color denotes the movement speed through the atmosphere and thin white lines denote direction. Tightly clustered white lines represent faster movement as well.

Invest 96L is expected to continue moving west south of the two large high pressure areas.



KTS

100

70

50

30

20

15

10

5

0

Fast Moving Storm

Fast Moving Storm

Typical Moving Storm

Slow Moving Storm

CIMSS ENV STEERING PRODUCT: 700-850 HPA LAYER (FOR TC MSLP RANGE: 1000-1010 HPA) 1200 UTC 31OCT20

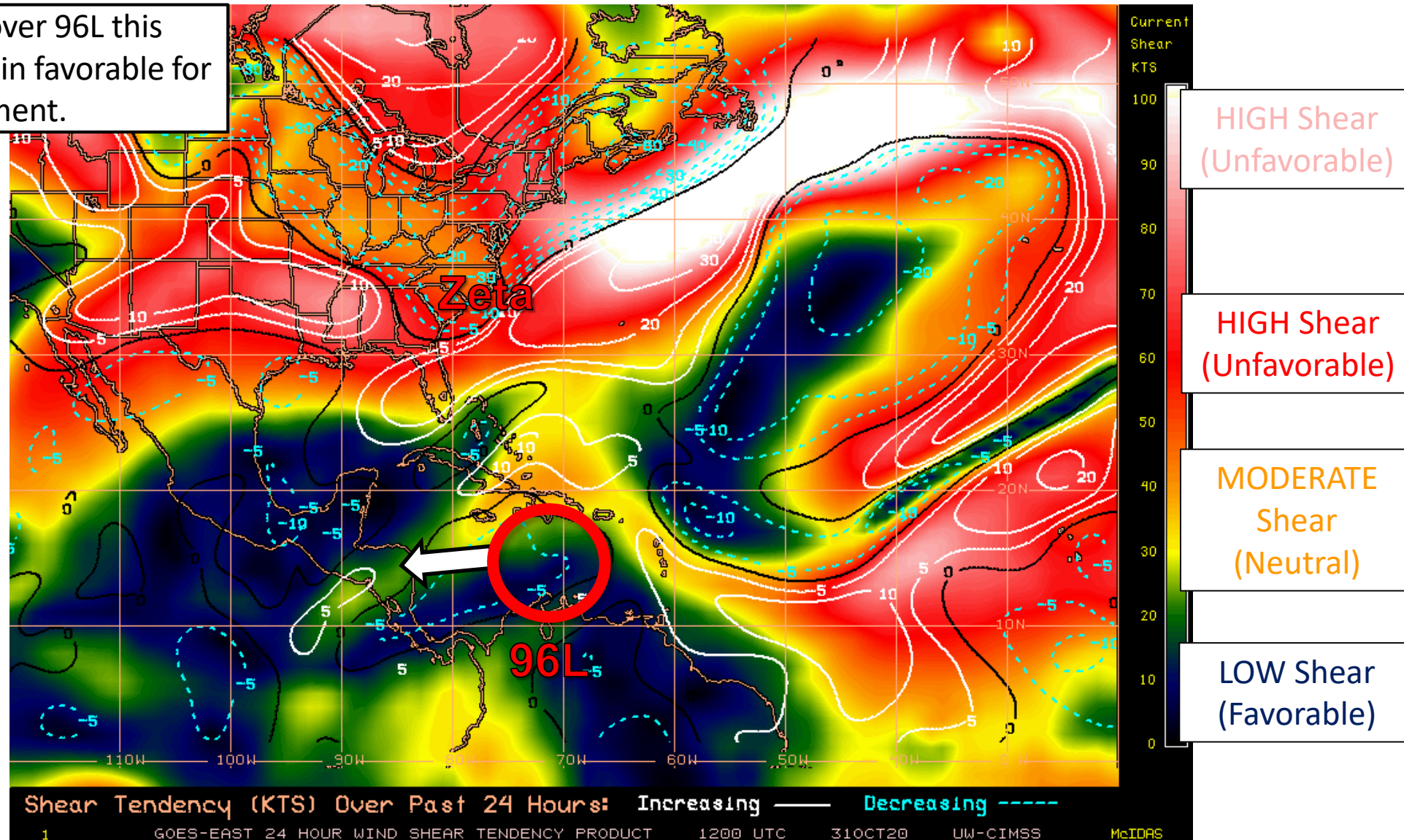


Wind Shear

Is the environment favorable for the system?

Color denotes the amount of wind shear and the lines denote how it have changed over the last 24 hours (dotted lines show decreasing shear and solid lines show increasing).

Wind shear remains light over 96L this morning, and conditions remain favorable for additional development.

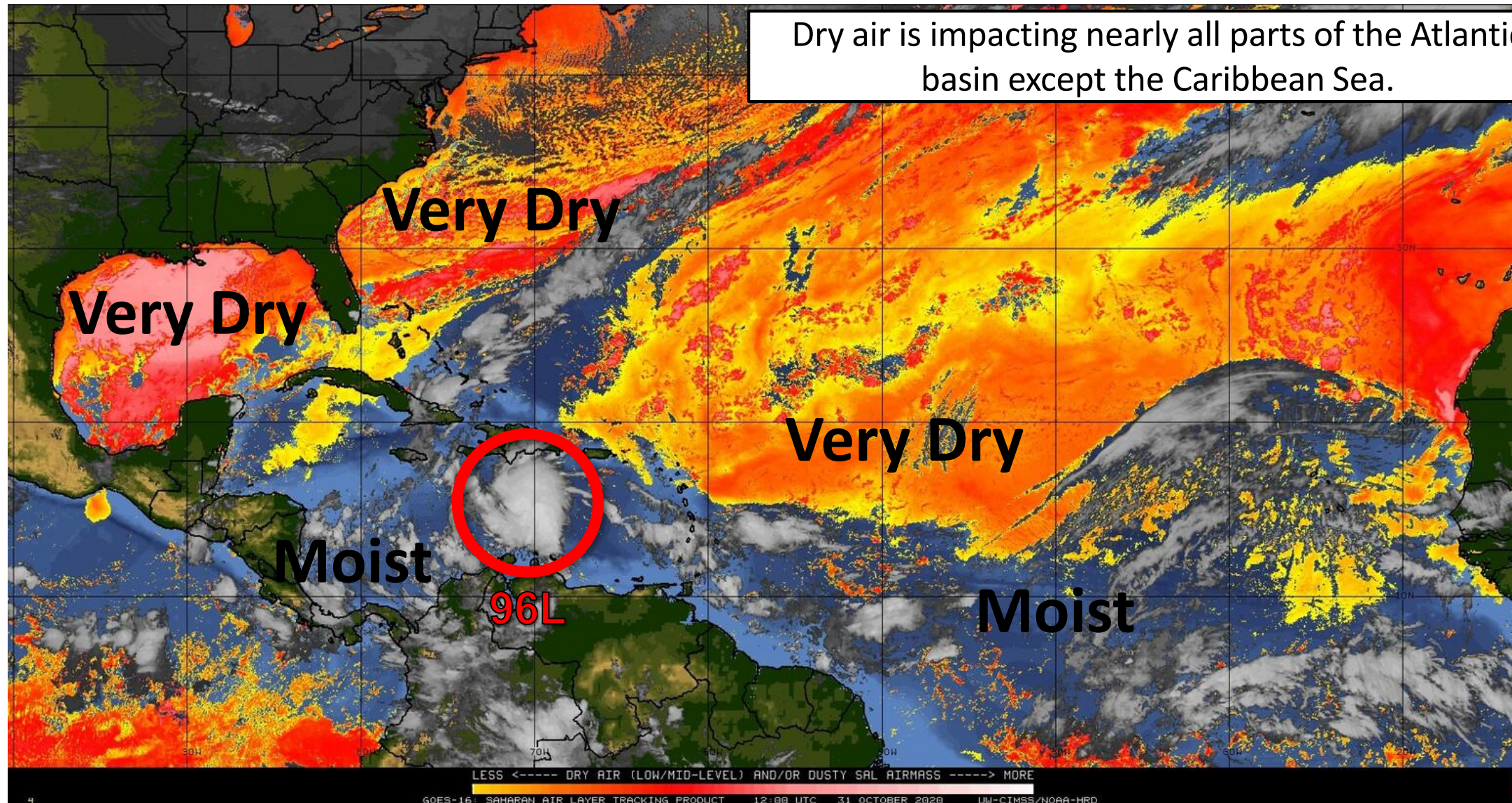




Dry Air & Saharan Dust

Is the environment favorable for the system?

Color denotes concentration of Saharan Dust or dry, stable air.



Dry air is impacting nearly all parts of the Atlantic basin except the Caribbean Sea.

Very Dry

Very Dry

Very Dry

Moist

96L

Moist

LESS <----- DRY AIR (LOW/MID-LEVEL) AND/OR DUSTY SAL AIRMASS -----> MORE

GOES-16: SAHARAN AIR LAYER TRACKING PRODUCT 12:00 UTC 31 OCTOBER 2020 UW-CIMSS/NOAA-HRD



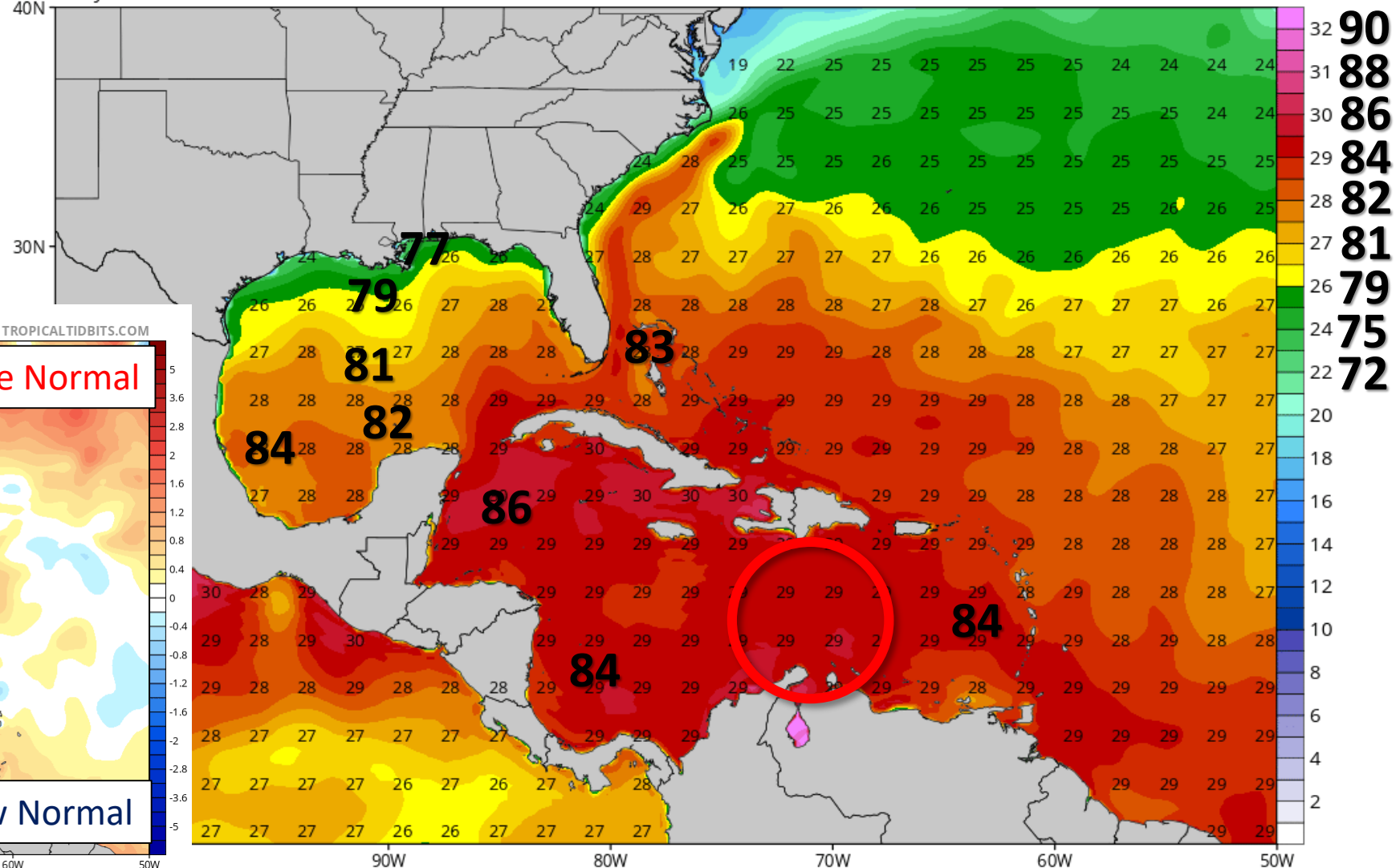
Sea Surface Temperatures & Anomalies

Is the ocean favorable for the system?

Temperatures across the Caribbean remain plenty warm enough to support a tropical cyclone. These temperatures are well above normal for late October/early November.

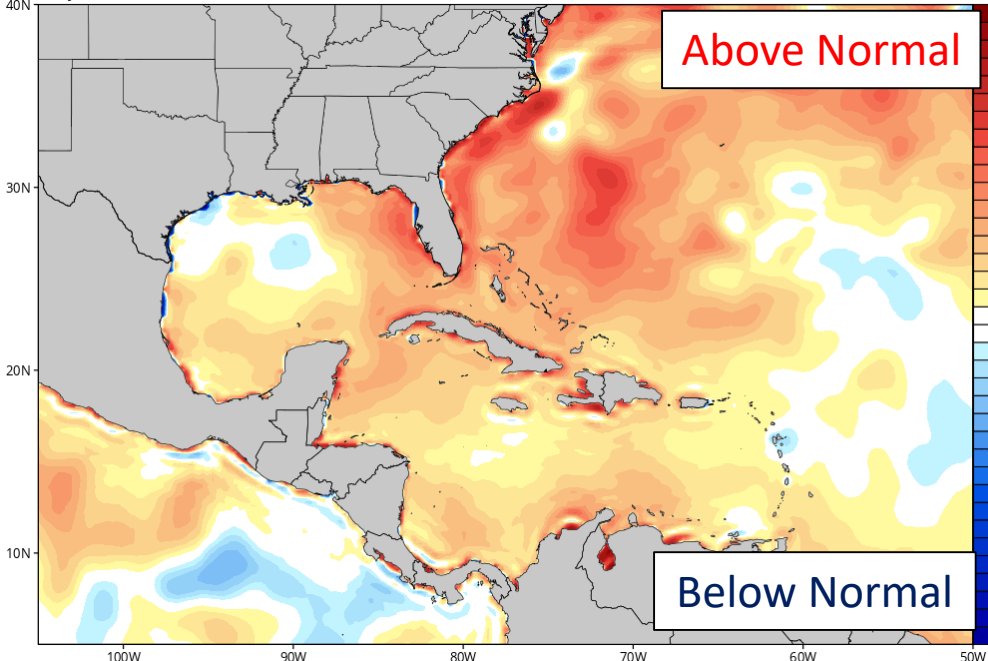
CDAS Sea Surface Temperature (°C)

Analysis Time: 06z Oct 31 2020



CDAS Sea Surface Temperature Anomaly (°C) (based on CFSR 1981-2010 Climatology)

Analysis Time: 06z Oct 31 2020



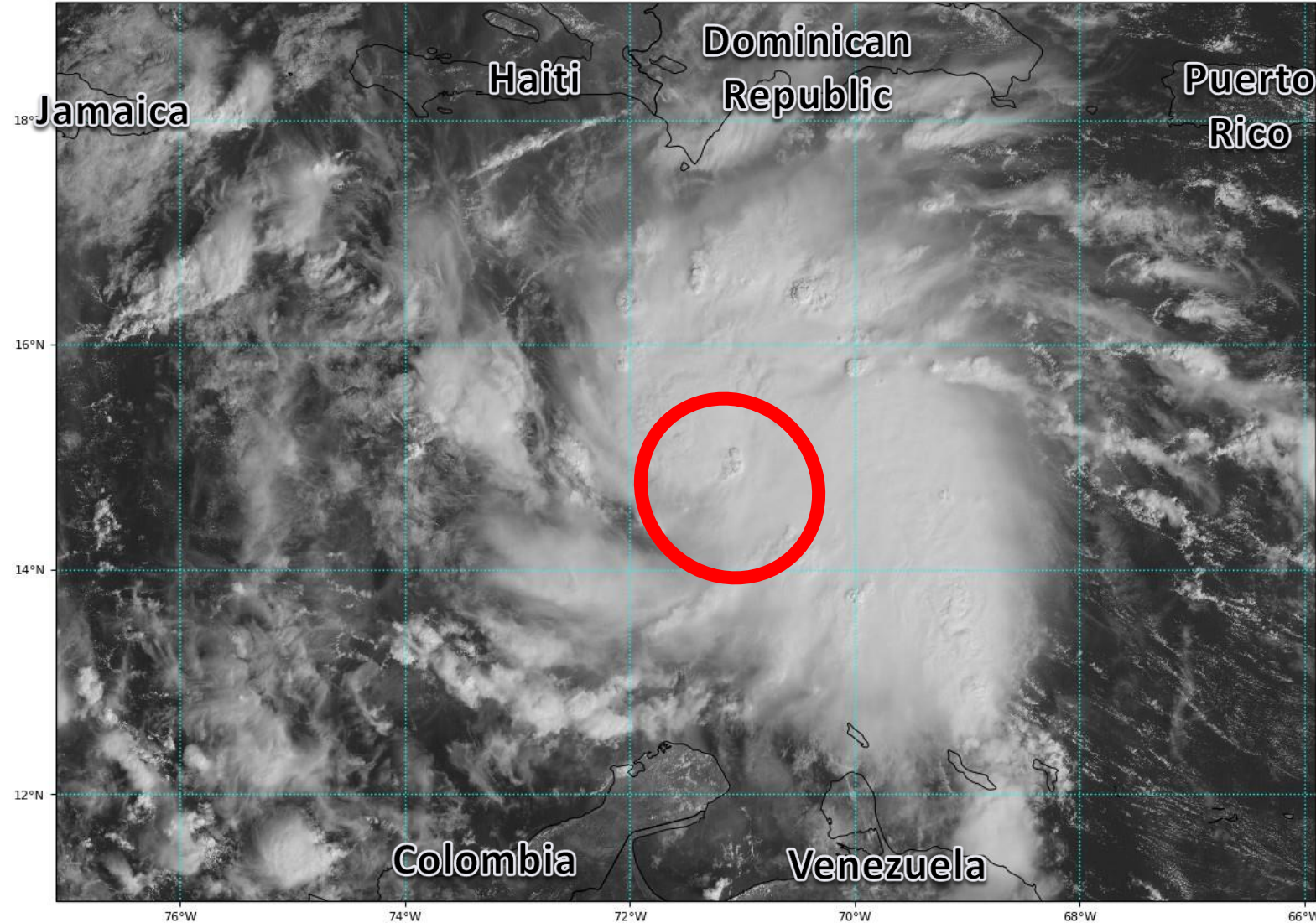


Satellite Imagery

Invest 96L – Central Caribbean Sea

GOES-16 Channel 2 (visible) Reflectance at 13:55Z Oct 31, 2020

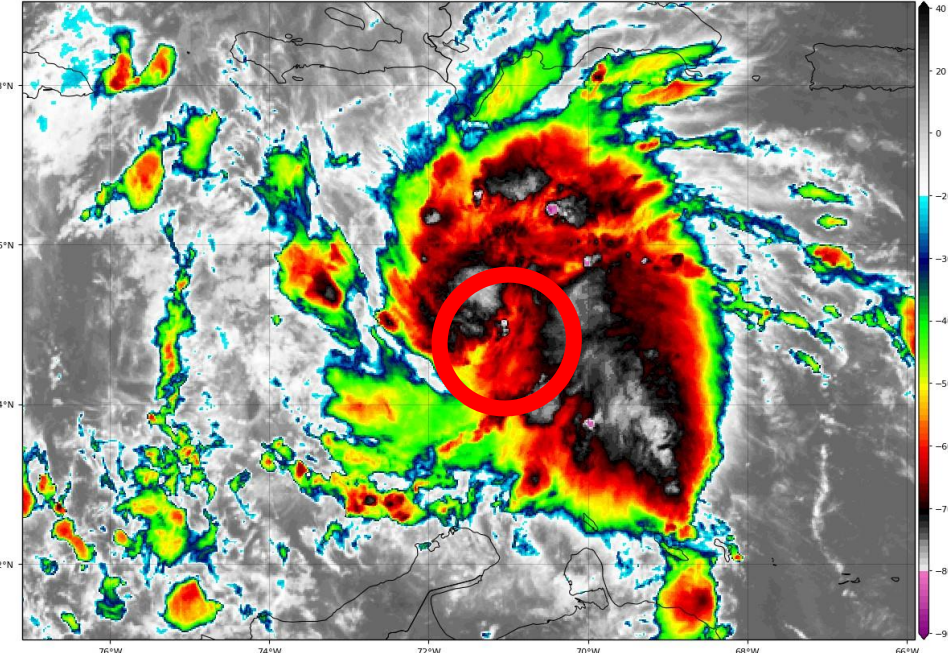
TROPICALTIDBITS.COM



Invest 96L continues to become better organized. Showers and thunderstorms have become more consolidated around a circulation. However, it appears this circulation is not yet at the surface, which is a prerequisite for a tropical cyclone.

GOES-16 Channel 13 (IR) Brightness Temperature (°C) at 13:55Z Oct 31, 2020

TROPICALTIDBITS.COM





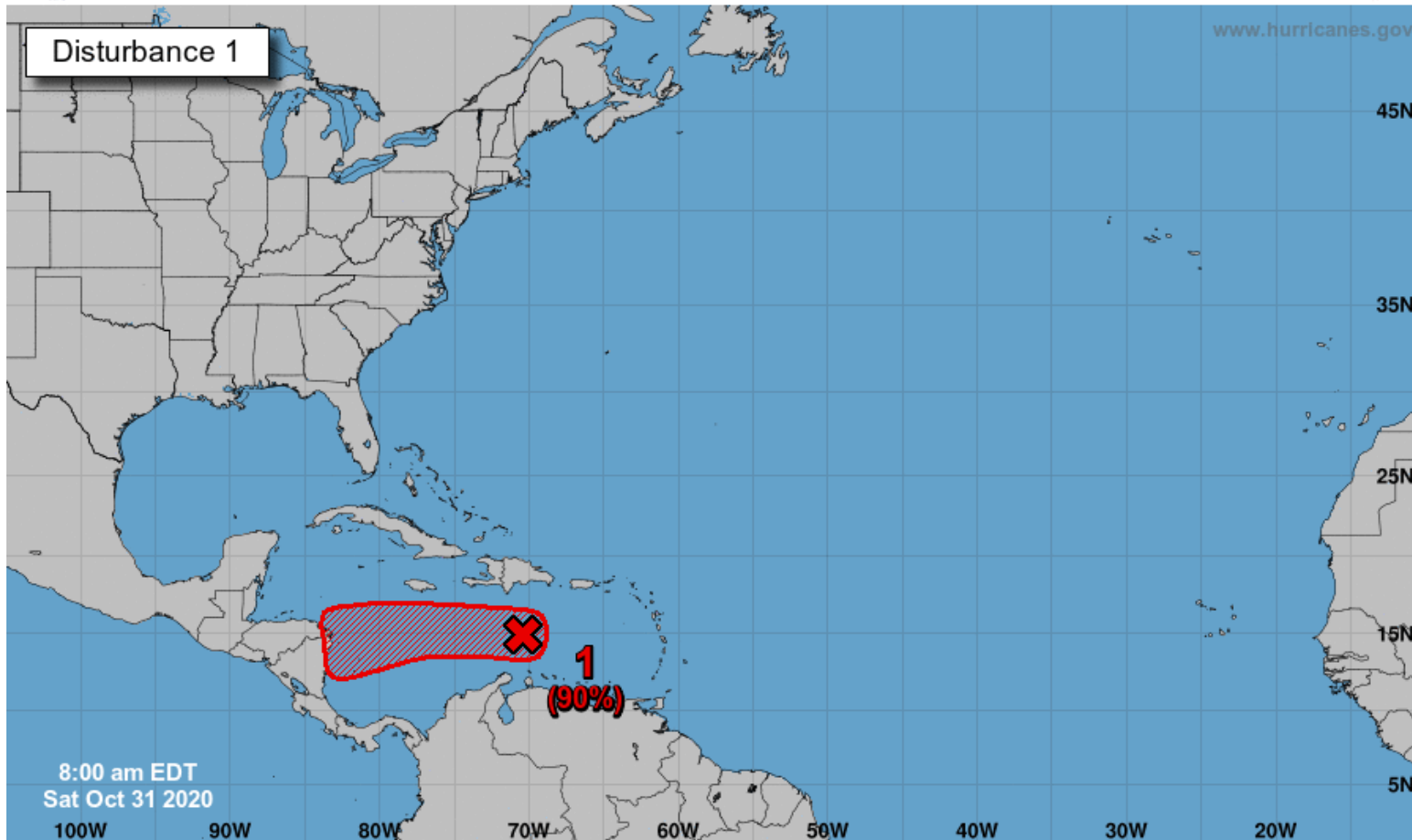
Tropical Weather Outlook

Possible Areas of Development During the Next 5 Days ([LINK](#))



Five-Day Graphical Tropical Weather Outlook

National Hurricane Center Miami, Florida



A vigorous tropical wave located over the central Caribbean Sea continues to produce a concentrated area of thunderstorms.

This system is gradually becoming better organized, and conditions are conducive for further development.

A tropical depression is expected to form during the next day or so while it moves generally westward into the western Caribbean Sea.

This system will not impact Florida over the next 5 days. It may need to be monitored mid to late next week.

***Formation chance through 48 hours...high...90%.**

***Formation chance through 5 days...high...90%.**

Current Disturbances and Five-Day Cyclone Formation Chance:
 Tropical or Sub-Tropical Cyclone:
 < 40% 40-60% > 60%
 Depression Storm Hurricane
 Post-Tropical Cyclone or Remnants



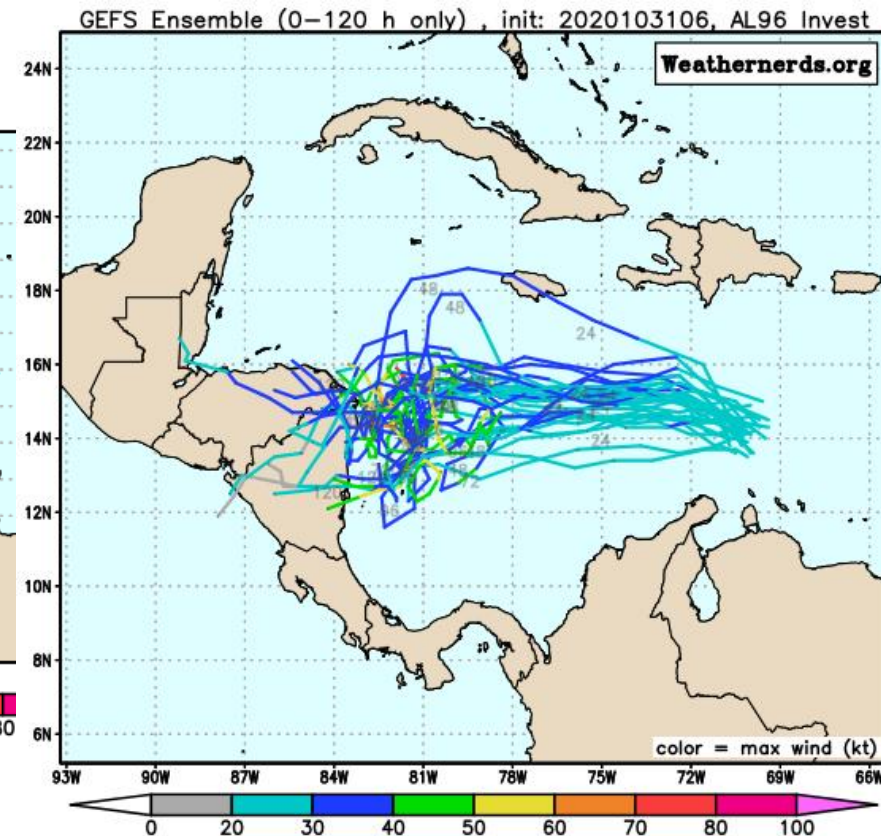
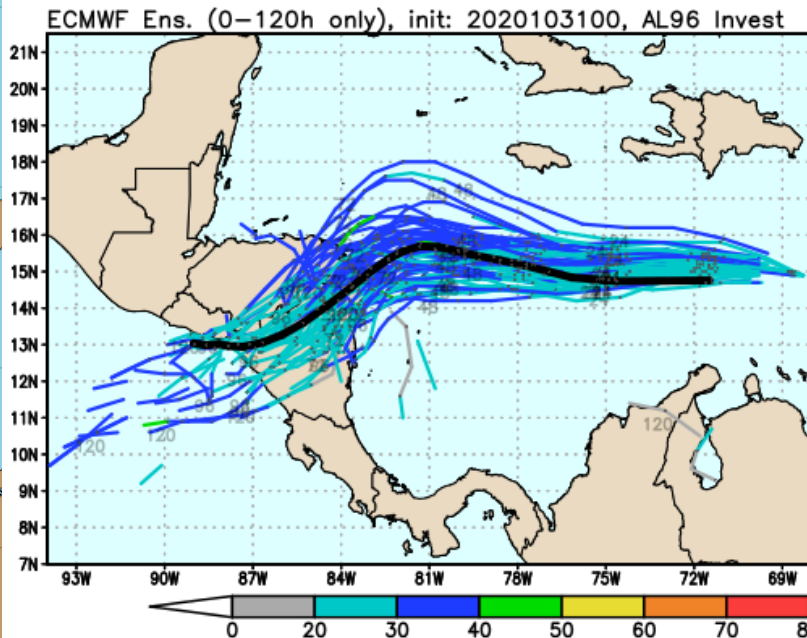
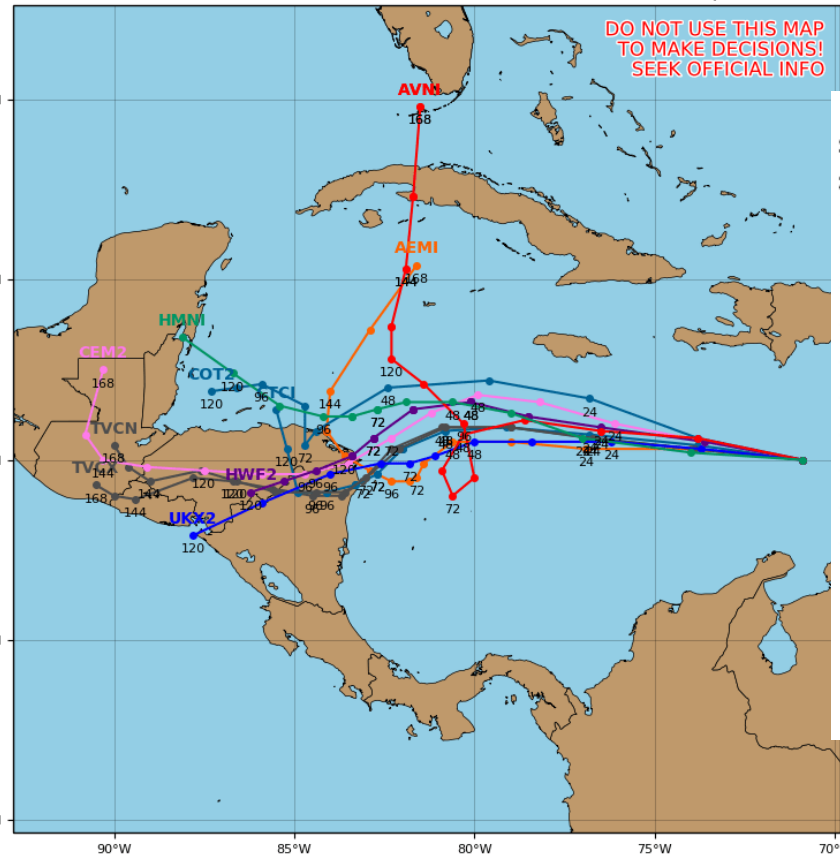
Model Forecast Tracks

Ensembles, Dynamical, and Statistical Models

Invest 96L Model Track Guidance

Initialized at 12z Oct 31 2020

Levi Cowan - tropicaltidbits.com



Models are in decent agreement about a west to west-southwest track toward Nicaragua and Honduras in about 3 days. However, uncertainty grows substantially thereafter. Most models do at least make landfall in Central America, but diverge on whether it dissipates, moves into the Pacific or emerges back into the western Caribbean. Additionally, some ensemble models don't make landfall and keep 96L meandering in the western Caribbean. Expect changes in the forecast beyond 3 days.



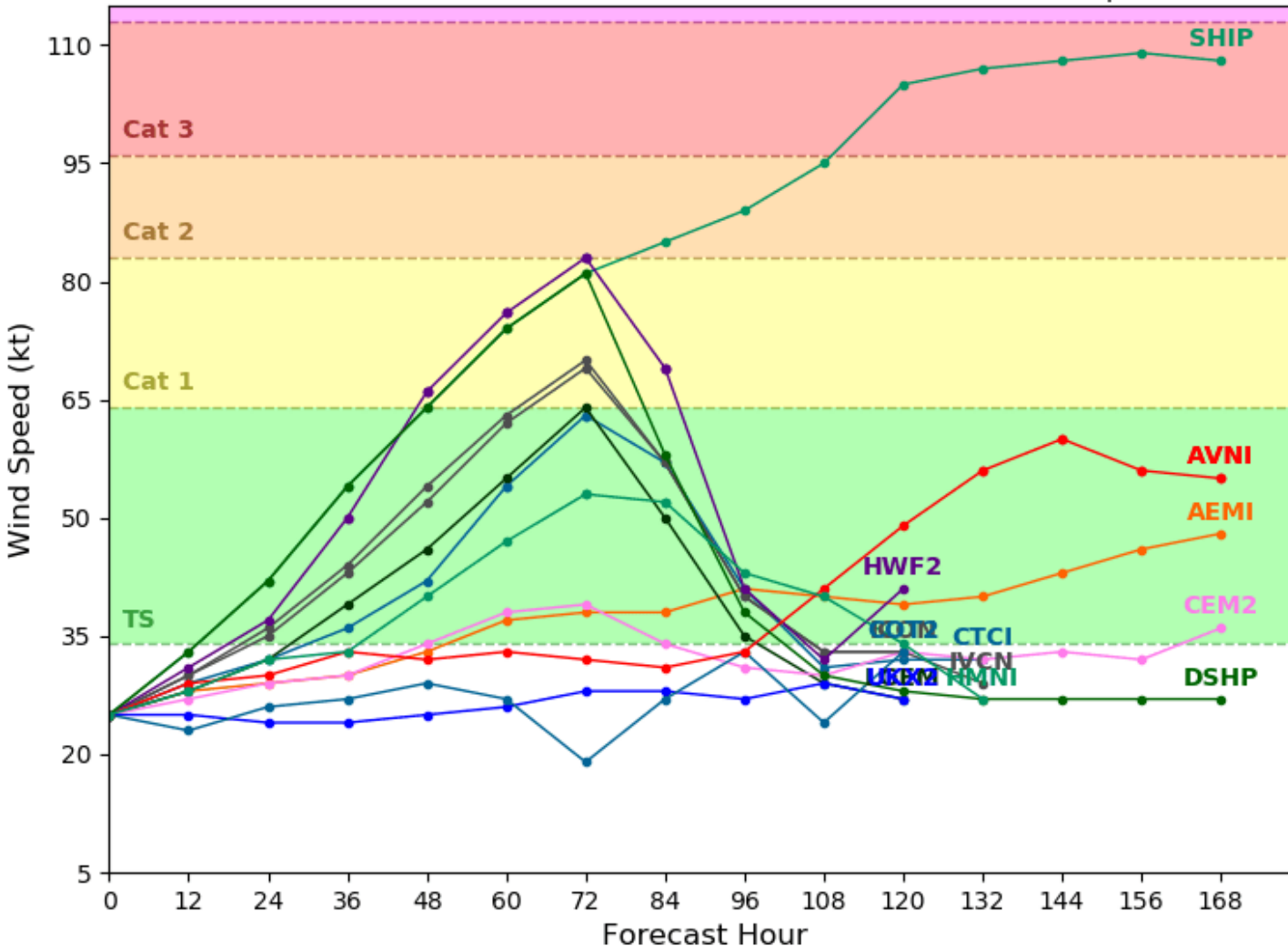
Model Forecast Intensity

Dynamical and Statistical Models

Invest 96L Model Intensity Guidance

Initialized at 12z Oct 31 2020

Levi Cowan - tropicaltidbits.com



Conditions are favorable for intensification, perhaps rapid intensification. An increasing number of models do show 96L at least becoming a hurricane.



Overall Summary

Invest 96L – Central Caribbean

- A tropical wave will likely become a tropical depression in the next day or so over the central or western Caribbean Sea.
- This wave will generally move westward toward Honduras and Nicaragua over the next 3 days. Track uncertainty grows thereafter with a few scenarios possible.
- This system has a 90% (high) chance of development over the next 5 days.
- The next name on the list is Eta.

Florida Outlook:

- No impacts from Invest 96L are expected through at least the next 5 days.
- However, 96L may need to be monitored mid to late next week.

Barring classification as a tropical cyclone later today, the next tropics packet will be issued on Sunday. For the latest information on the tropics, please visit the National Hurricane Center website at www.hurricanes.gov.



TROPICAL UPDATE



Created by:

Cameron Young, Assistant State Meteorologist

Cameron.Young@em.myflorida.com

State Meteorological Support Unit

Florida Division of Emergency Management

Users wishing to subscribe (approval pending) to this distribution list, register at:

https://public.govdelivery.com/accounts/FLDEM/subscriber/new?topic_id=SERT_Met_Tropics.

Other reports available for subscription are available at:

<https://public.govdelivery.com/accounts/FLDEM/subscriber/new?preferences=true>