



TROPICAL UPDATE



8:00 AM EDT

Thursday, October 29, 2020

Tropical Storm Zeta & Caribbean Low (60%)

This update is intended for government and emergency response officials, and is provided for informational and situational awareness purposes only. Forecast conditions are subject to change based on a variety of environmental factors. For additional information, or for any life safety concerns with an active weather event please contact your County Emergency Management or Public Safety Office, local National Weather Service forecast office, or visit the National Hurricane Center website at www.hurricanes.gov.



National Hurricane Center Map

Note: The cone contains the probable path of the storm but does not show the size of the storm. Hazardous conditions can occur outside of the cone.

The map shows the current location of Tropical Storm Zeta at 8 AM Thursday, October 29, 2020, marked with a black 'x' at approximately 35.3°N, 83.5°W. A yellow cone of uncertainty extends northeastward, showing the probable path. Key forecast positions are marked with circles: a solid black circle for 2 AM Friday at approximately 40°N, 68°W, and an open circle for 2 PM Friday at approximately 45°N, 55°W. The map includes latitude lines from 35°N to 50°N and longitude lines from 85°W to 50°W. State and territorial abbreviations are shown for the landmasses.

Tropical Storm Zeta
 Thursday October 29, 2020
 8 AM EDT Intermediate Advisory 19A
 NWS National Hurricane Center

Current information: x
 Center location 35.3 N 83.5 W
 Maximum sustained wind 60 mph
 Movement NE at 39 mph

Forecast positions:
 ● Tropical Cyclone ○ Post/Potential TC
 Sustained winds: D < 39 mph
 S 39-73 mph H 74-110 mph M > 110 mph

Potential track area:
 Day 1-3 (solid line) Day 4-5 (dotted line)

Watches:
 Hurricane (pink) Trop Stm (yellow)

Warnings:
 Hurricane (red) Trop Stm (blue)

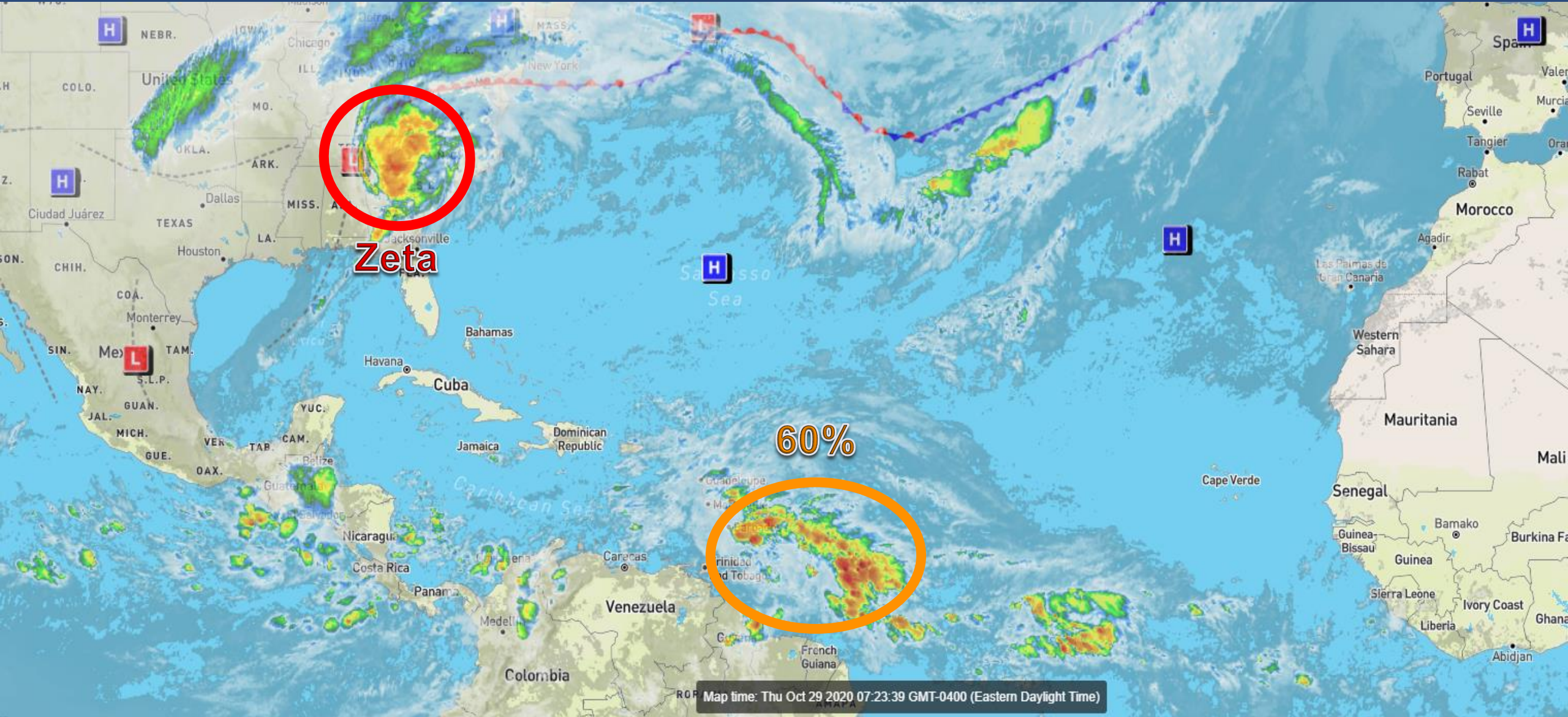
Current wind extent:
 Hurricane (dark red) Trop Stm (orange)

Zeta is now well inland over the southern Appalachians, but gusty winds continue across the Panhandle and Big Bend. All Tropical Storm Warnings have been discontinued. Nuisance to minor storm surge will continue through the day across the Panhandle and Big Bend.



Atlantic Basin Satellite Image

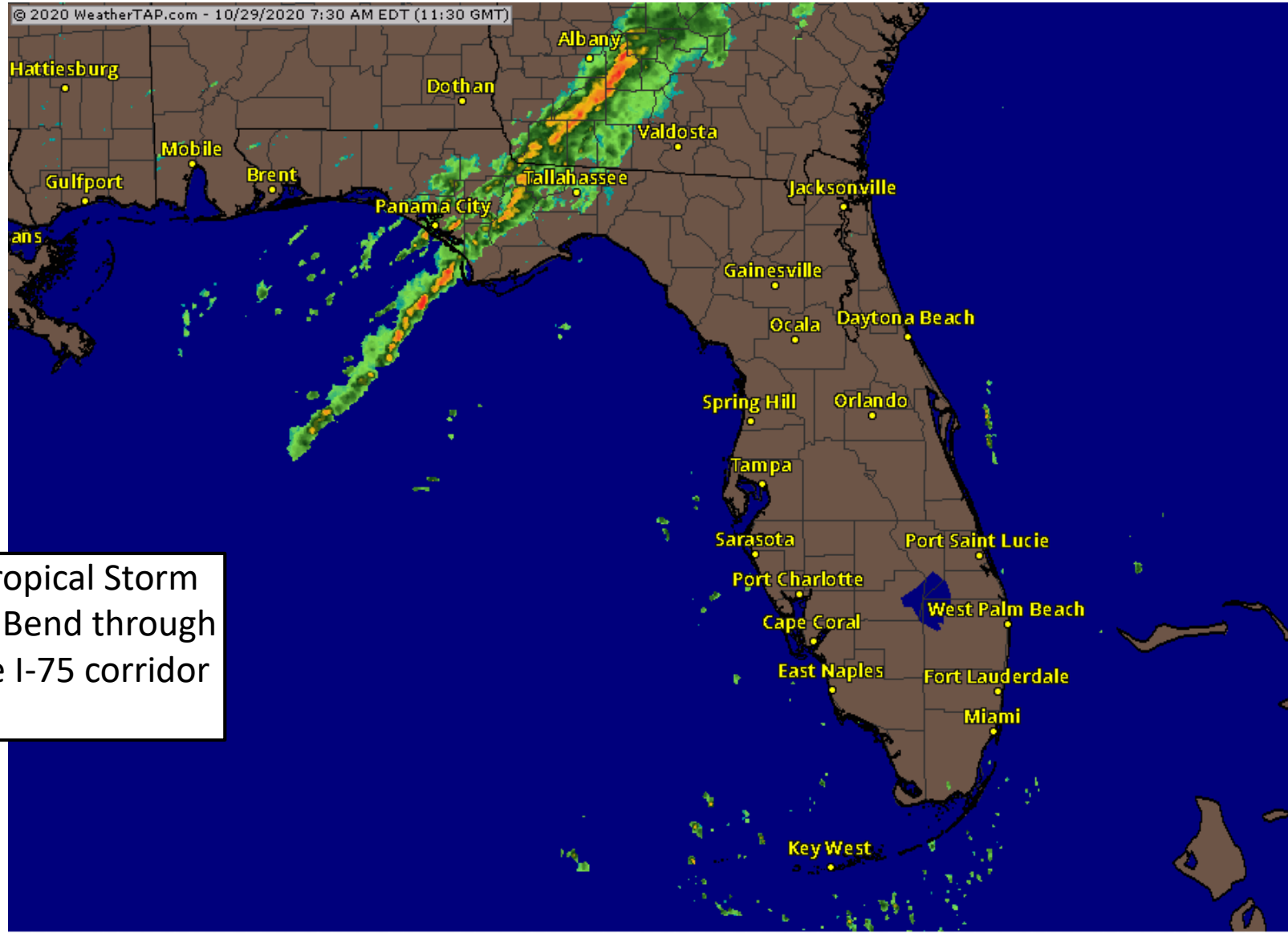
Chance of development: — None — Low — Medium — High





Current Florida Radar

As of 7:30 AM ET/6:30 AM CT

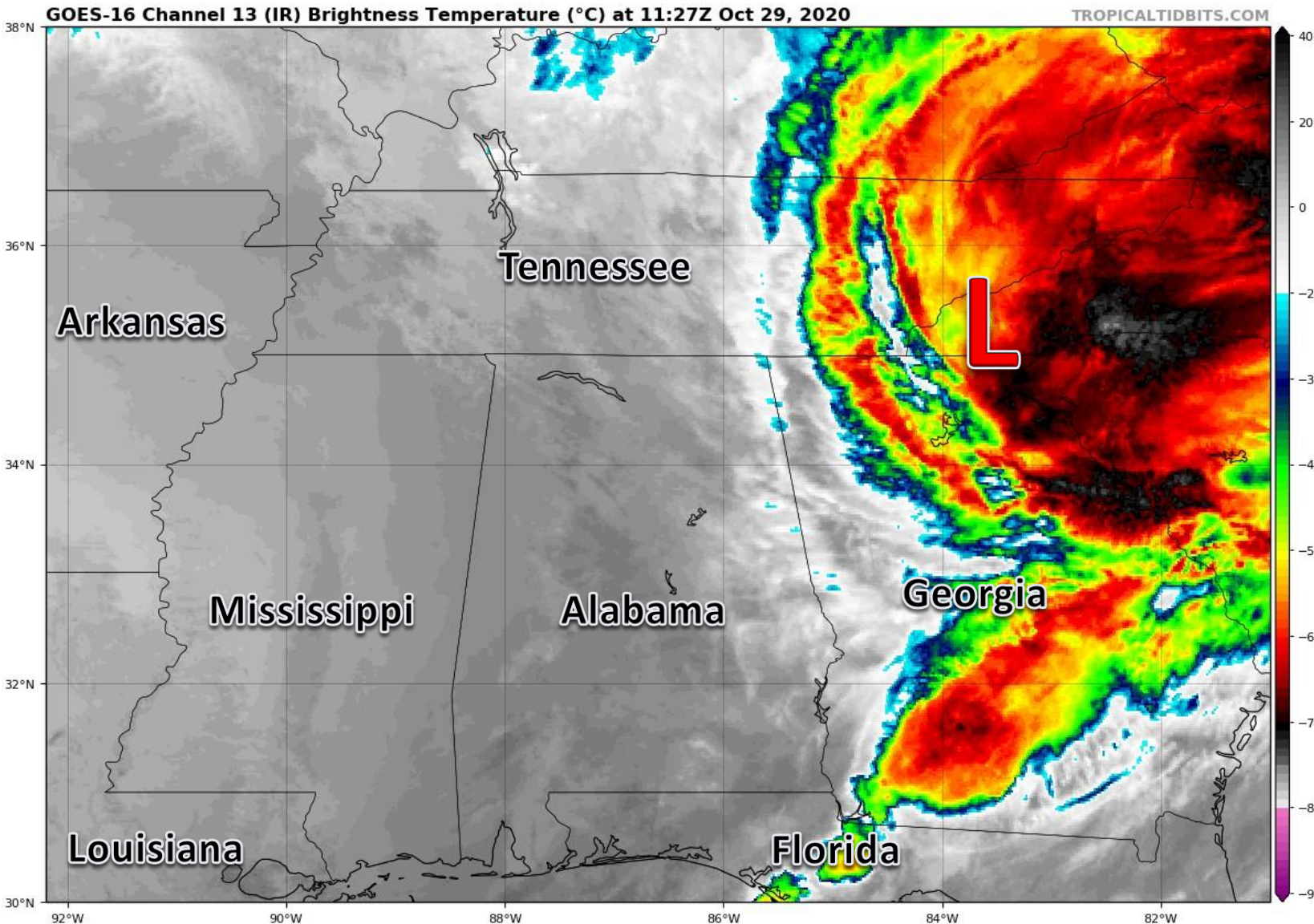


A rain band associated with Tropical Storm Zeta will move through the Big Bend through this morning and approach the I-75 corridor around midday.

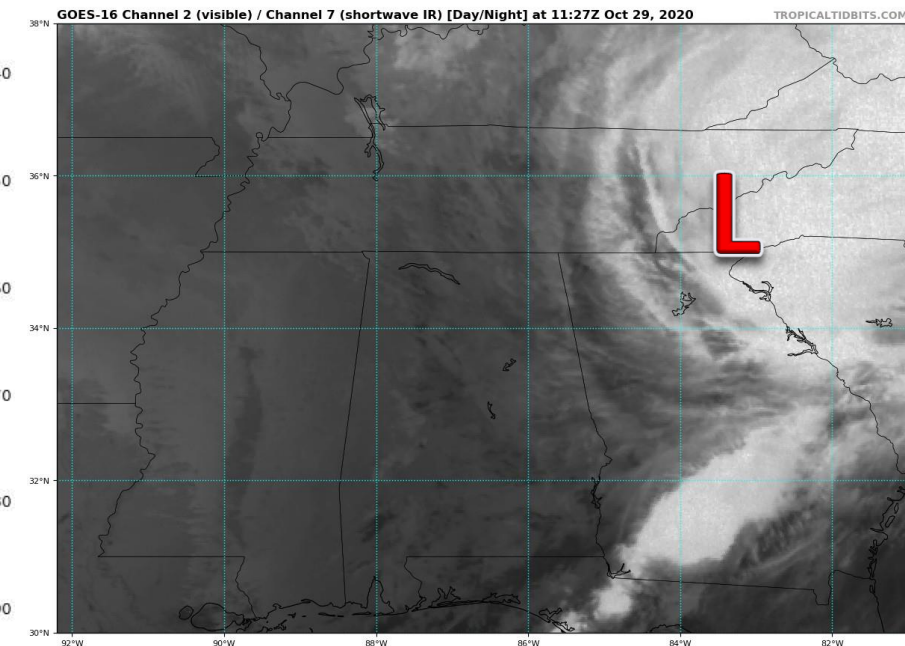


Satellite Imagery

Tropical Storm Zeta – Gulf of Mexico



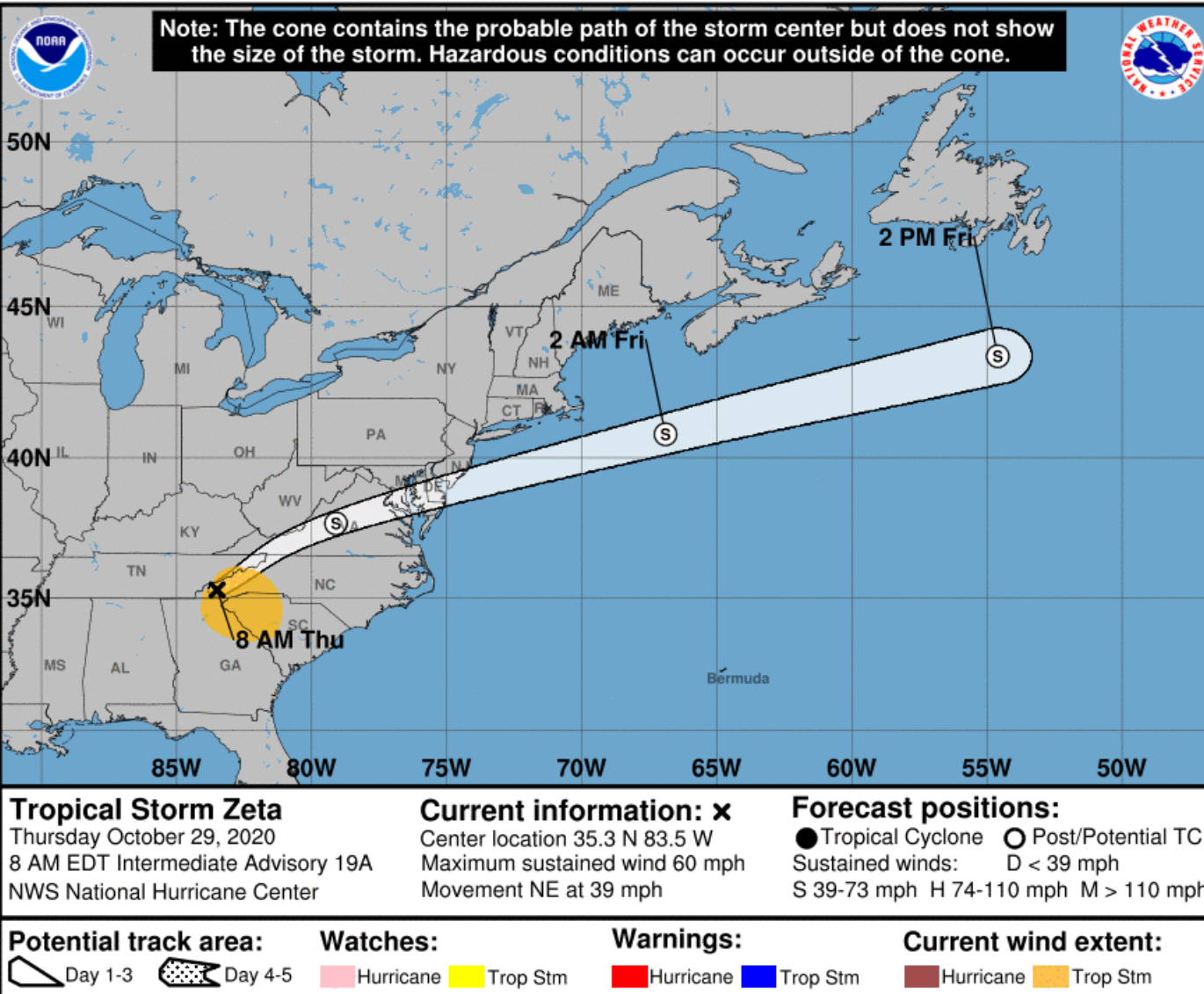
Zeta has zoomed across the Southeast U.S. overnight and is located near the Georgia/North Carolina border. Breezy conditions continue across the Panhandle as an outer band continues moving through.





Official Forecast Track

From the National Hurricane Center – Tropical Storm Zeta



- The center of Tropical Storm Zeta is located about 50 miles west of Asheville, North Carolina, moving northeast at 39 mph.
- Zeta has maximum sustained winds of 60 mph. Zeta will become non-tropical later today.
- Zeta will move offshore later today off the Mid-Atlantic coast.

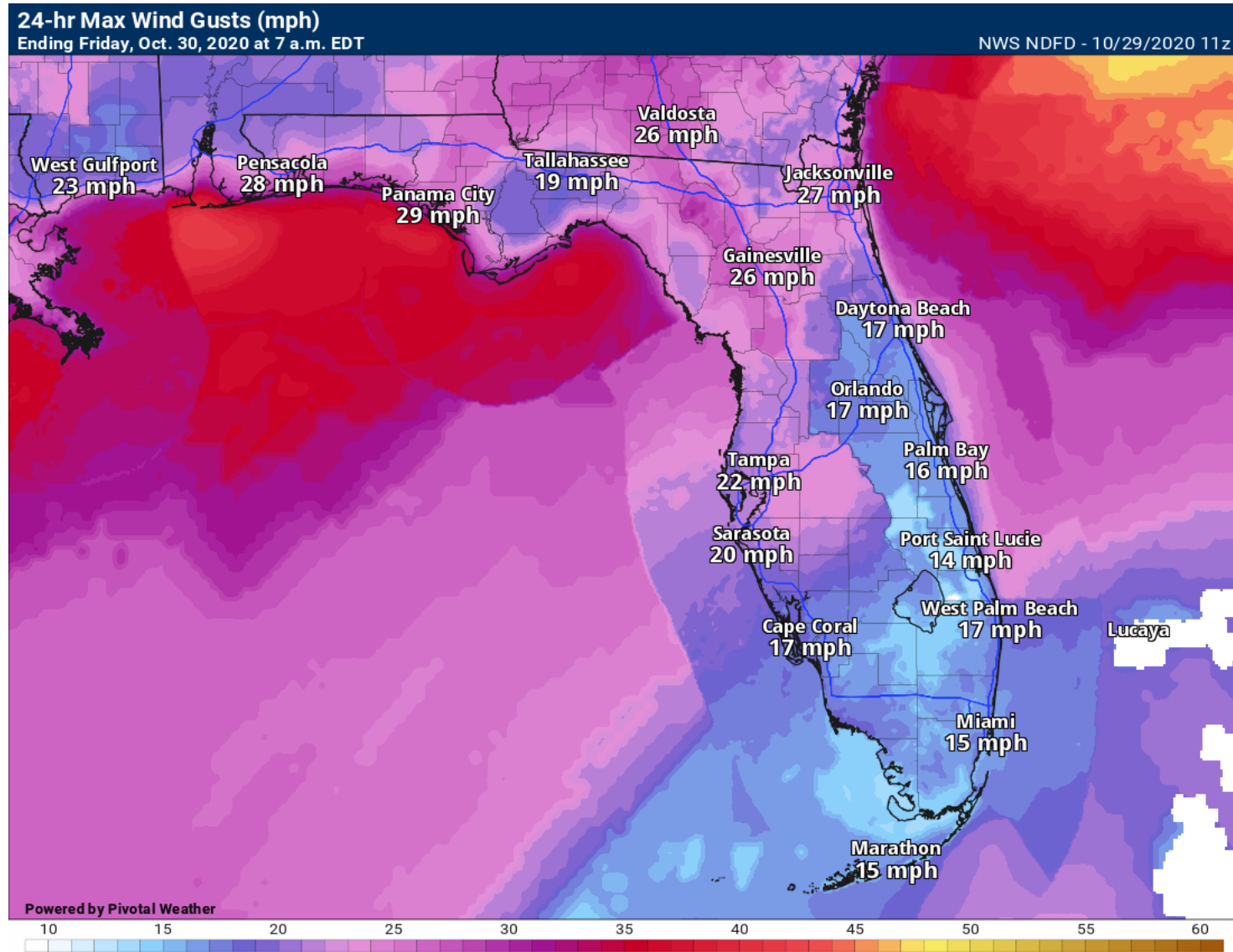


Maximum Wind Gusts

Next 24 Hours

Gusty winds up to 20-30 mph will continue across much of North and West Central Florida today.

All Tropical Storm Warnings have been discontinued.





Storm Surge/Coastal Flooding

Thursday – Tropical Storm Zeta

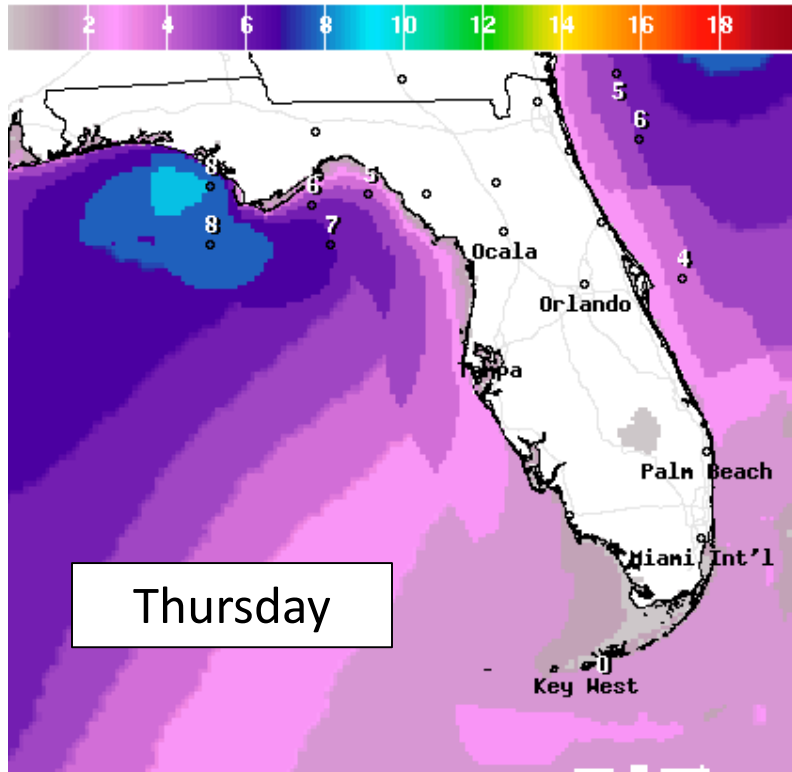
Continued southerly winds and swells will result in about 1-2' of storm surge through the day.





Forecast Wave Heights

Thursday & Friday

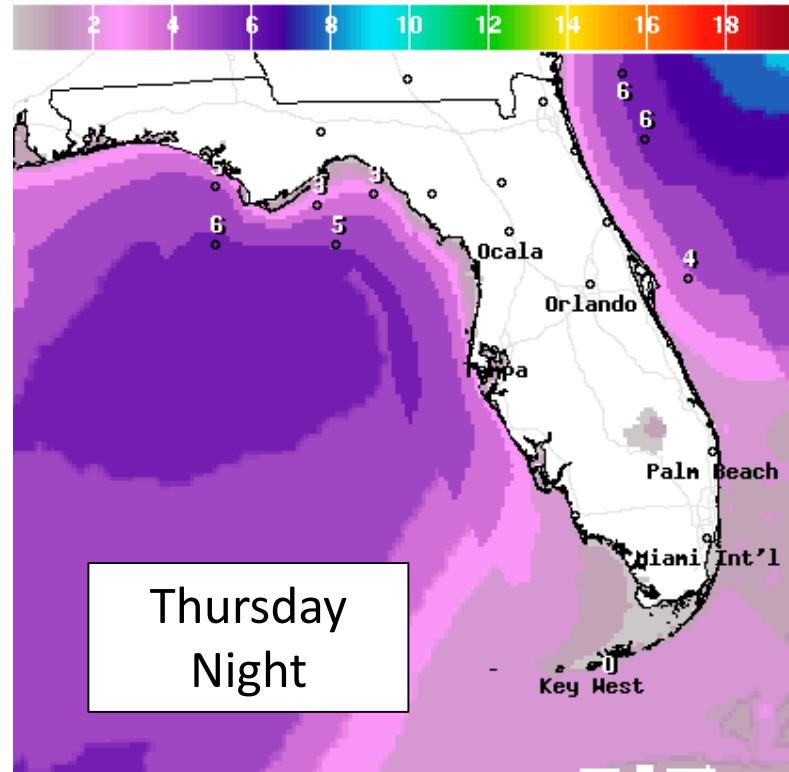


Wave Height(ft) Ending Thu Oct 29 2020 8PM EDT
(Fri Oct 30 2020 00Z)



National Digital Forecast Database

11z issuance Graphic created-Oct 29 7:15AM EDT

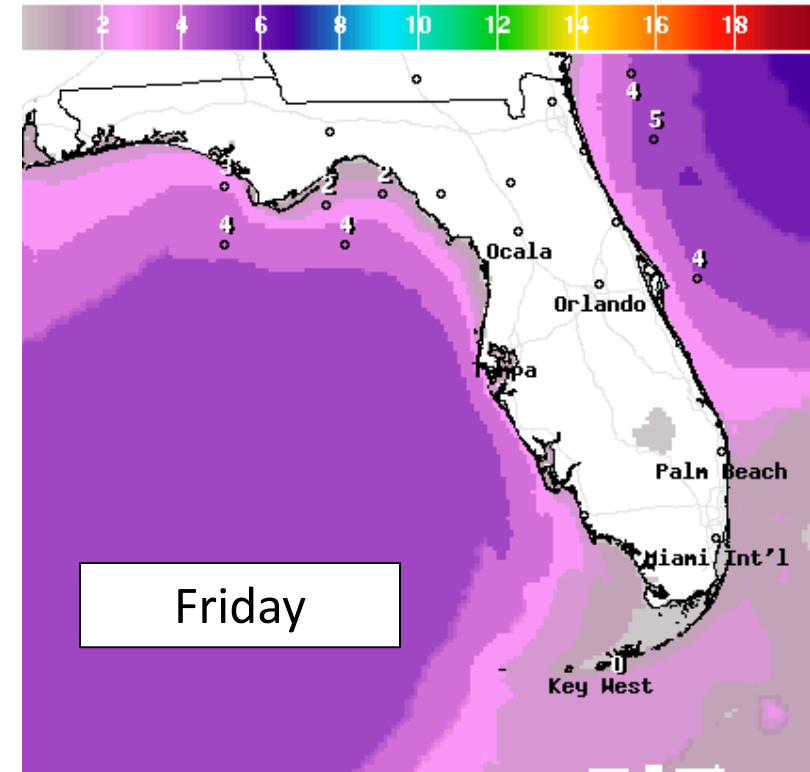


Wave Height(ft) Ending Fri Oct 30 2020 8AM EDT
(Fri Oct 30 2020 12Z)



National Digital Forecast Database

11z issuance Graphic created-Oct 29 7:15AM EDT



Wave Height(ft) Ending Fri Oct 30 2020 2PM EDT
(Fri Oct 30 2020 18Z)



National Digital Forecast Database

11z issuance Graphic created-Oct 29 7:15AM EDT



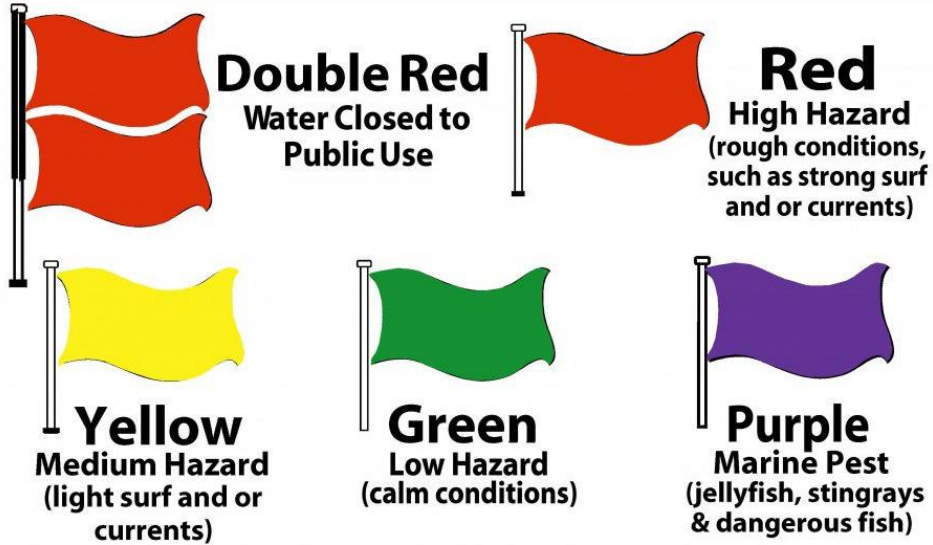
Waves will slowly subside over the Gulf, but swells will linger for a couple days. This will result in dangerous rip currents for Gulf beaches. Breezy winds and high waves will also result in dangerous rip currents along the East Coast.



Rip Current Outlook

Today

BEACH FLAG WARNING SYSTEM



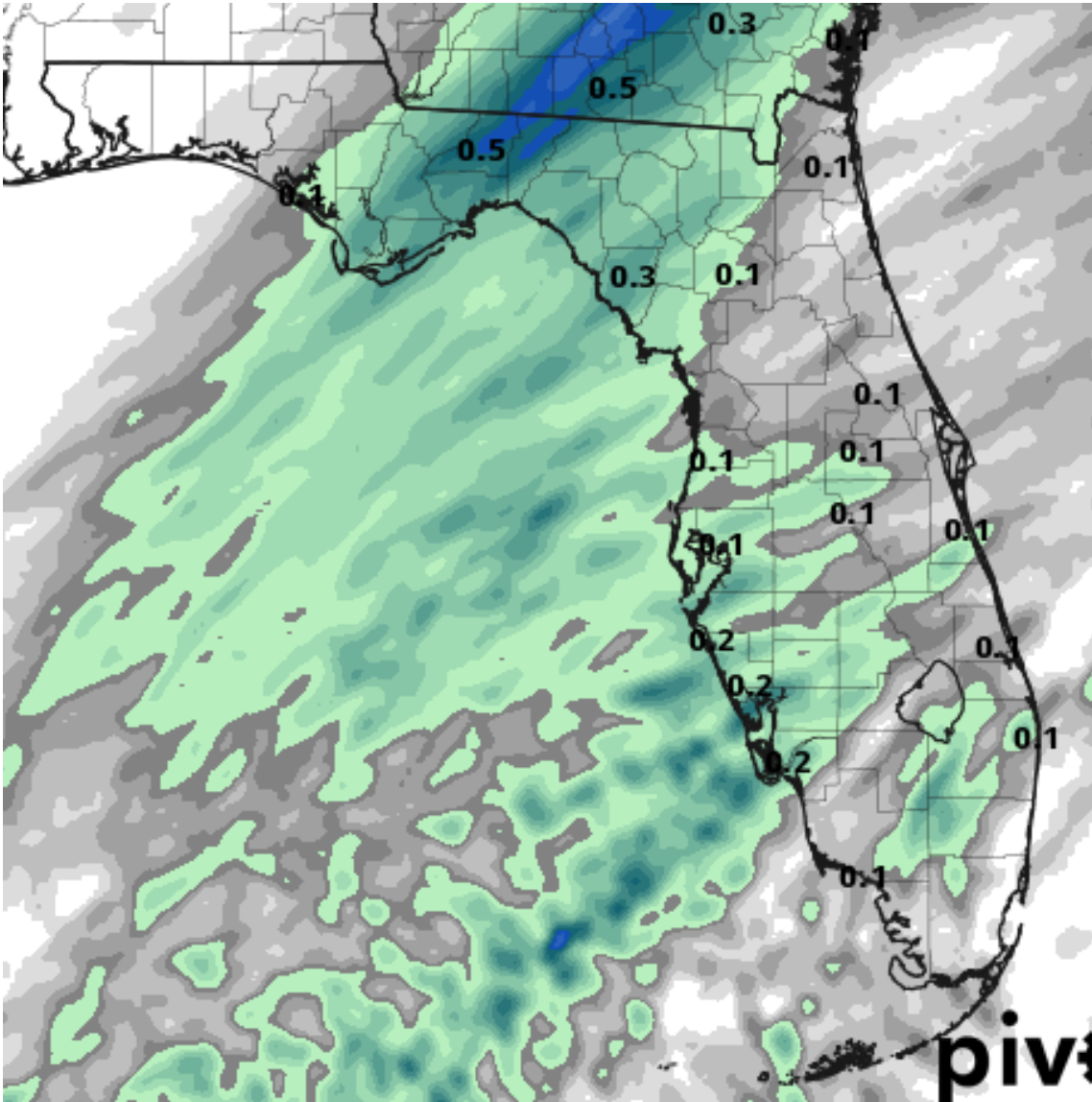
Extremely dangerous rip currents are expected at Gulf Coast beaches through Thursday, possibly into Friday.





Rainfall Totals Next 24 Hours

Ending 8 AM ET Friday

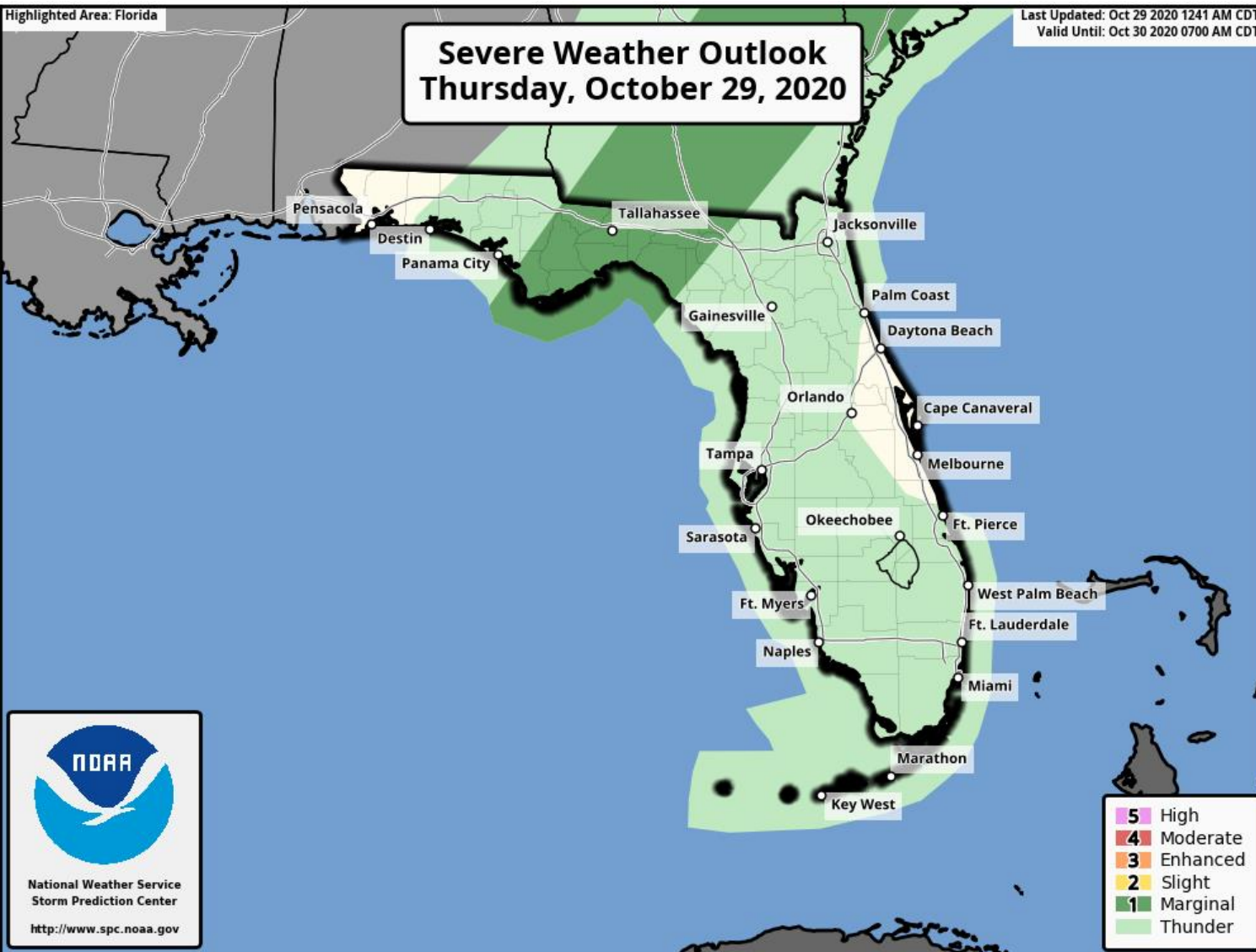


Rainfall totals will generally be around 0.5" or less today. Flash flooding is not expected.



Severe Weather Outlook

From the Storm Prediction Center – Today



The Big Bend is outlined in a **Marginal Risk of severe weather** (level 1 of 5) for the possibility of a brief tornado and gusty winds this morning. The tornado threat decreases farther east.

Understanding Severe Thunderstorm Risk Categories

THUNDERSTORMS (no label)	1 - MARGINAL (MRGL)	2 - SLIGHT (SLGT)	3 - ENHANCED (ENH)	4 - MODERATE (MDT)	5 - HIGH (HIGH)
No severe* thunderstorms expected	Isolated severe thunderstorms possible	Scattered severe storms possible	Numerous severe storms possible	Widespread severe storms likely	Widespread severe storms expected
Lightning/flooding threats exist with <u>all</u> thunderstorms	Limited in duration and/or coverage and/or intensity	Short-lived and/or not widespread, isolated intense storms possible	More persistent and/or widespread, a few intense	Long-lived, widespread and intense	Long-lived, very widespread and particularly intense

* NWS defines a severe thunderstorm as measured wind gusts to at least 58 mph, and/or hail to at least one inch in diameter, and/or a tornado. All thunderstorm categories imply lightning and the potential for flooding. Categories are also tied to the probability of a severe weather event within 25 miles of your location.



National Weather Service

www.spc.noaa.gov





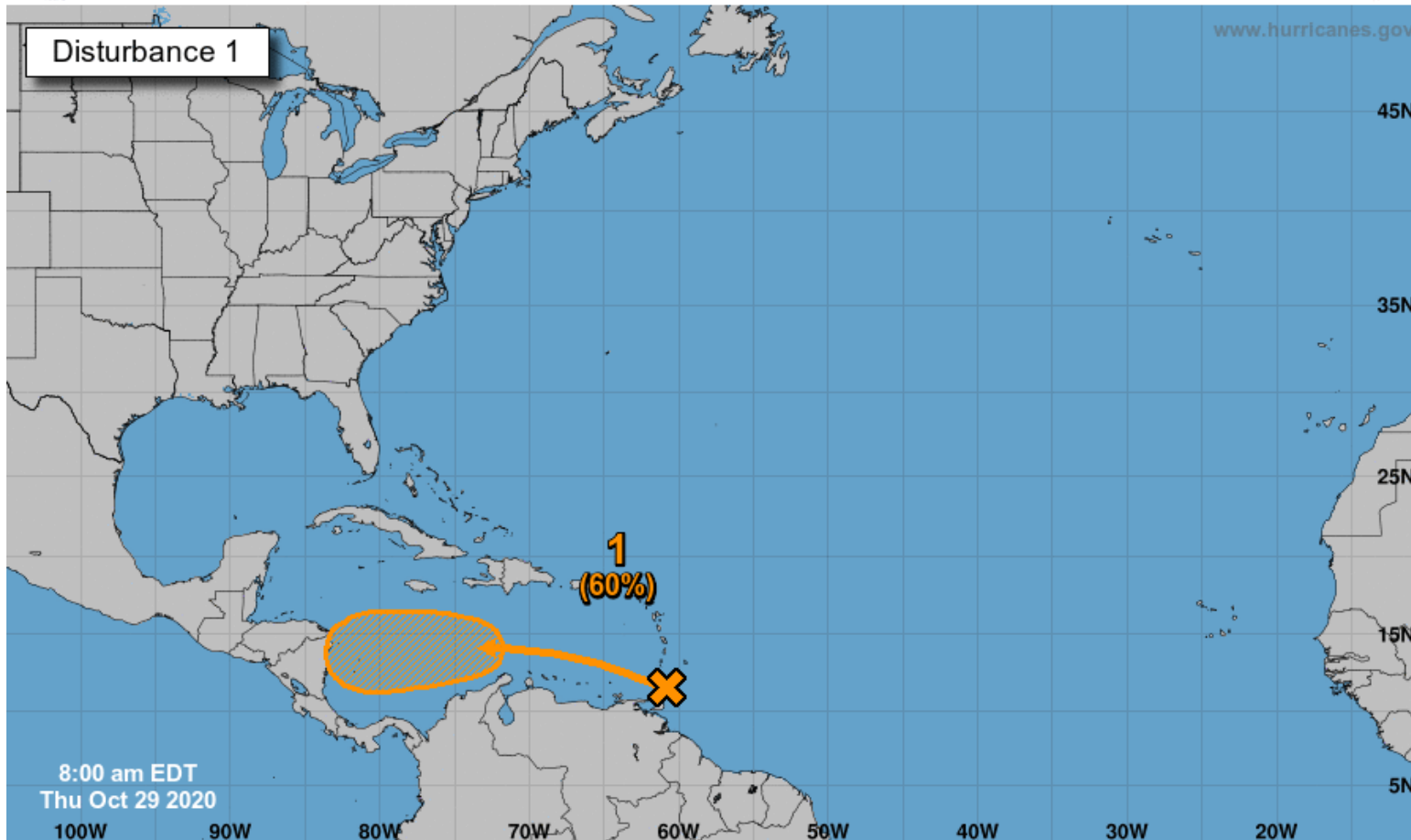
Tropical Weather Outlook

Possible Areas of Development During the Next 5 Days ([LINK](#))



Five-Day Graphical Tropical Weather Outlook

National Hurricane Center Miami, Florida



A large area of disturbed weather moving from the tropical Atlantic across the Lesser Antilles and into the eastern Caribbean Sea is associated with a pair of tropical waves.

Upper-level winds are expected to become more conducive for development of this disturbance during the next couple of days, and a tropical depression could form over the weekend or early next week while the system moves westward across the central and western Caribbean Sea.

This system may need to be monitored.

***Formation chance through 48 hours...low...20%.**

***Formation chance through 5 days...medium...60%.**

Current Disturbances and Five-Day Cyclone Formation Chance: < 40% 40-60% > 60%

Tropical or Sub-Tropical Cyclone: Depression Storm Hurricane

Post-Tropical Cyclone or Remnants



Overall Summary

Tropical Storm Zeta

- Zeta is now moving across the southern Appalachians, and sustained winds remain near 60 mph.
- Zeta should become post-tropical later today or tonight.

Caribbean Low

- A pair of tropical waves will move into the Caribbean Sea in a couple days, where development is possible.
- An area of low pressure is expected to form over the central Caribbean, and a tropical depression could form this weekend or early next week.
- This system has a 20% (low) chance of formation during the next 48 hours, but a 60% (medium) chance over the next 5 days.
- This system may need to be monitored into next week.
- The next name on the list is Eta.

Florida Outlook:

- Gusty winds continue across the Florida Panhandle and Big Bend this morning.
- A weakening rain band will move through the Big Bend this morning, bringing 40-45 mph winds and maybe a brief tornado.
- Nuisance to minor coastal flooding is possible across the Panhandle and Big Bend through today.
- Waves will slowly subside, but dangerous rip currents remain possible across the Gulf beaches.

The next briefing packet will be issued this afternoon. For the latest information on the tropics, please visit the National Hurricane Center website at www.hurricanes.gov.



TROPICAL UPDATE



Created by:

Cameron Young, Assistant State Meteorologist

Cameron.Young@em.myflorida.com

State Meteorological Support Unit

Florida Division of Emergency Management

Users wishing to subscribe (approval pending) to this distribution list, register at:

https://public.govdelivery.com/accounts/FLDEM/subscriber/new?topic_id=SERT_Met_Tropics.

Other reports available for subscription are available at:

<https://public.govdelivery.com/accounts/FLDEM/subscriber/new?preferences=true>