



TROPICAL UPDATE



11:00 AM EDT

Wednesday, October 28, 2020

Hurricane Zeta

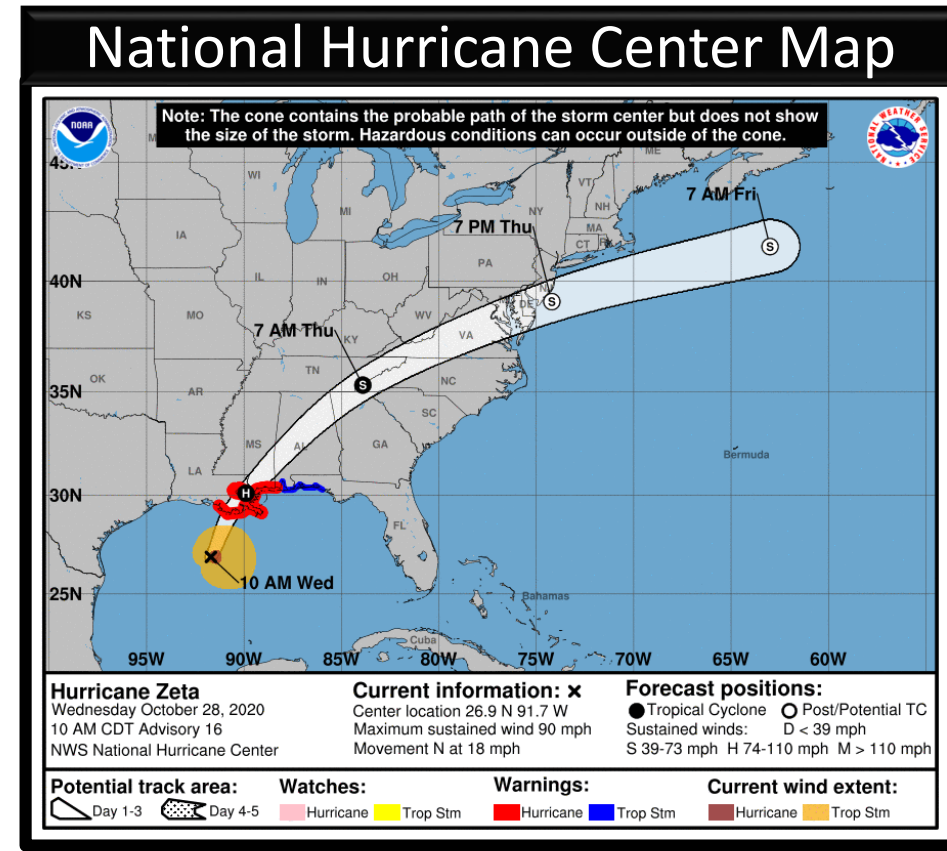
This update is intended for government and emergency response officials, and is provided for informational and situational awareness purposes only. Forecast conditions are subject to change based on a variety of environmental factors. For additional information, or for any life safety concerns with an active weather event please contact your County Emergency Management or Public Safety Office, local National Weather Service forecast office, or visit the National Hurricane Center website at www.hurricanes.gov.



Hurricane Zeta

11 AM Wednesday: Florida Threats & Changes Since Last Packet

	MINIMAL	Low	MODERATE	HIGH	EXTREME
WINDS					
STORM SURGE					
FLASH FLOODING					
TORNADOES					
	Low	MODERATE		HIGH	
RIP CURRENTS					



Overview/Recent Changes:

No changes to intensity or warnings as of this advisory.

Impacts will still extend well east of the center into the Panhandle Wednesday night.

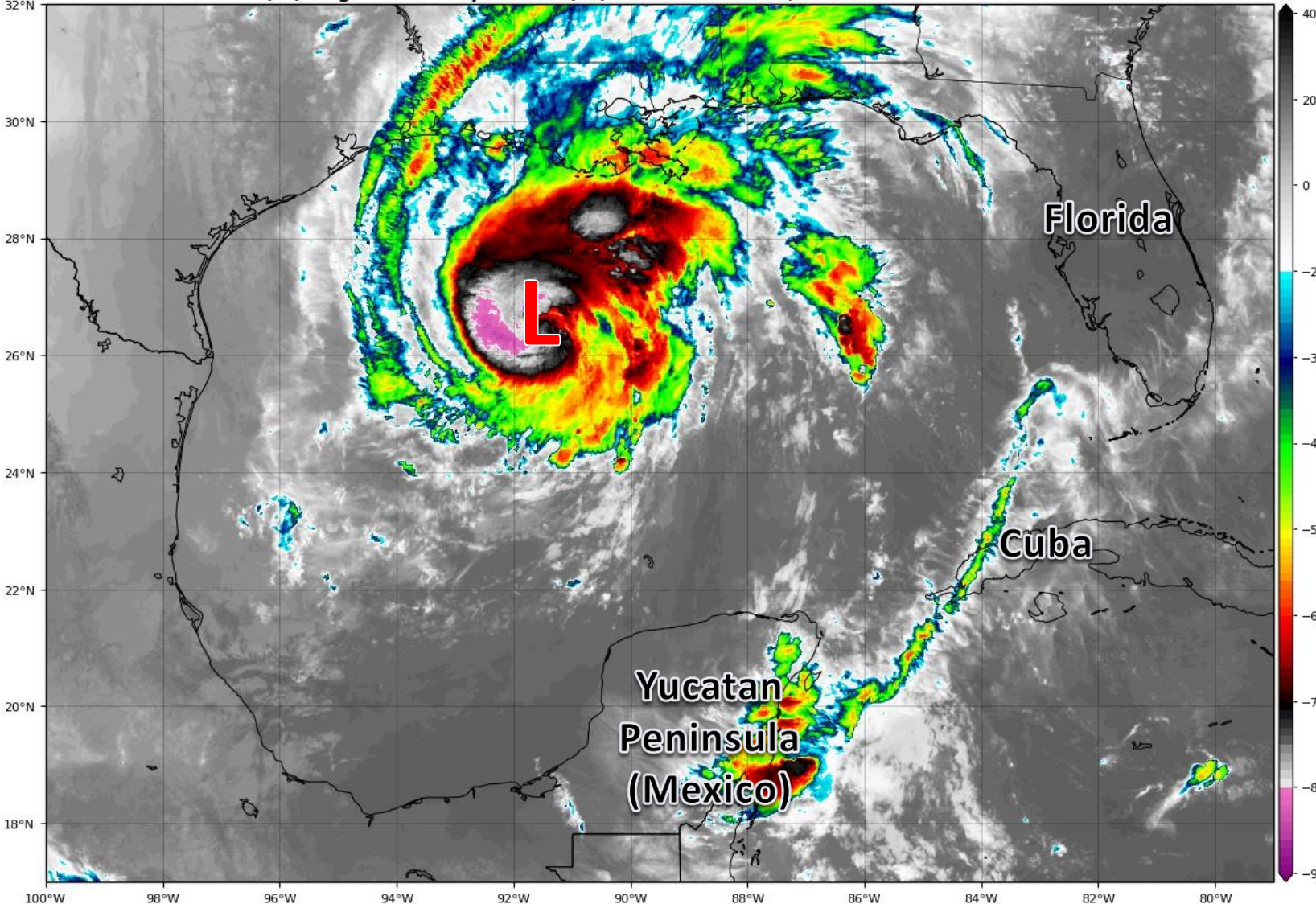


Satellite Imagery

Hurricane Zeta – Gulf of Mexico

GOES-16 Channel 13 (IR) Brightness Temperature (°C) at 13:55Z Oct 28, 2020

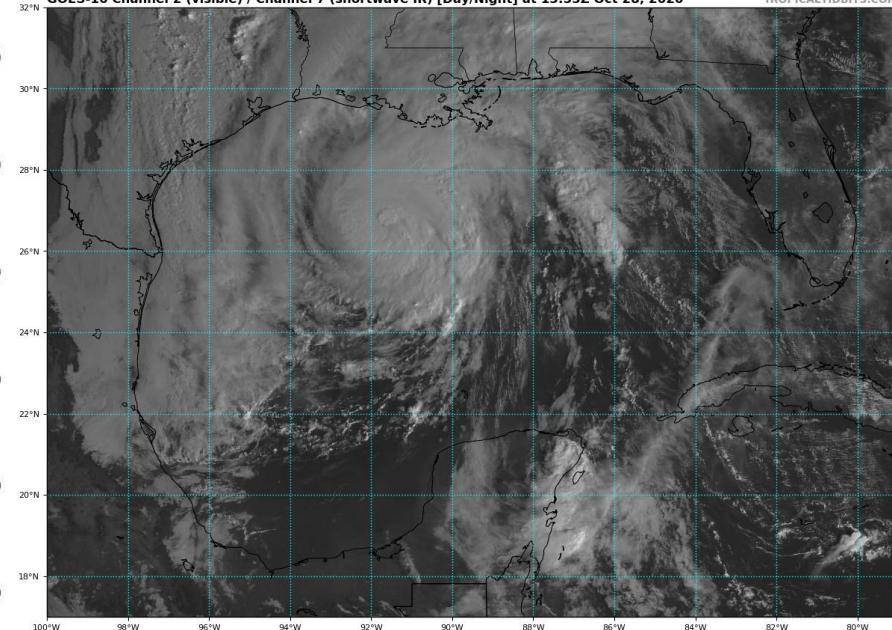
TROPICALTIDBITS.COM



Zeta's eye is not as clear as it was this morning, possibly due to some wind shear affecting the system. However, Zeta could still strengthen as it interacts with an upper level low (some non-tropical influence). Regardless, Zeta will be a powerful hurricane at landfall.

GOES-16 Channel 2 (visible) / Channel 7 (shortwave IR) [Day/Night] at 13:55Z Oct 28, 2020

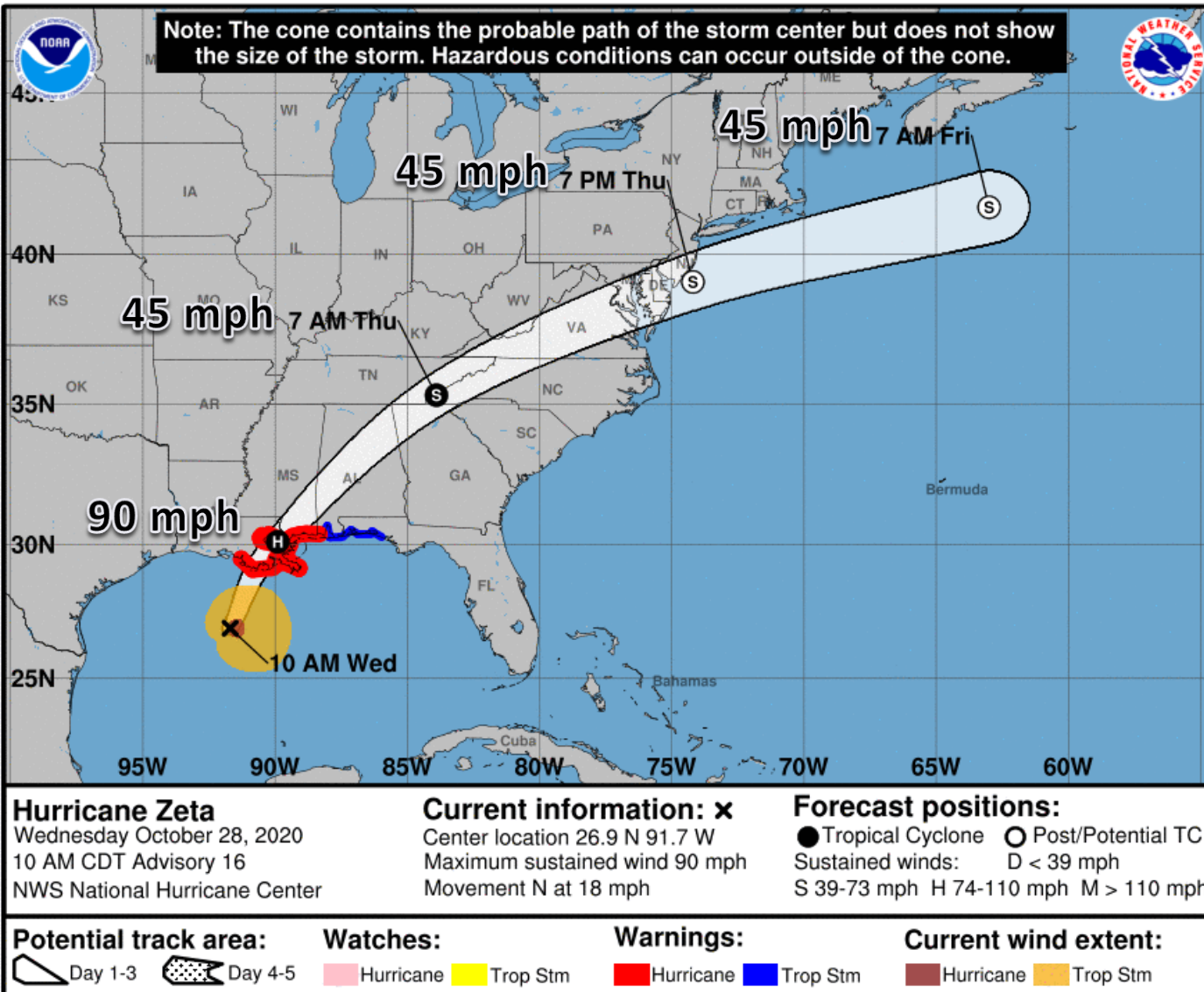
TROPICALTIDBITS.COM





Official Forecast Track

From the National Hurricane Center – Hurricane Zeta



- The center is located about 235 miles south-southwest of New Orleans, LA, or about 365 miles southwest of Pensacola, FL, north at 18 mph.
- A turn towards the northeast is forecast on today as a cold front moves in and accelerates Zeta towards the Gulf Coast.
- Zeta has maximum sustained winds of 90 mph (Category 1 Hurricane). Additional strengthening is possible, and Zeta could make landfall as a Category 2 hurricane.
- With its fast forward speed, strong winds are expected well inland over the southeast US.



Damaging Wind Threat Overview

Hurricane Zeta

The greatest wind threat will be in the western Panhandle, where wind gusts of 60-70 mph may occur Wednesday night. Sustained winds of 40-50 mph are possible.

Gusts to tropical storm force (40-50 mph) remain possible in the eastern Panhandle to the Apalachicola River, particularly in any rain bands that move through late Wednesday night and early Thursday morning.

[https://www.weather.gov/srh/tropical?
office=mob](https://www.weather.gov/srh/tropical?office=mob)

Click on "Threats and Impacts" Tab



[\[Download KML\]](#)

[\[Download Image\]](#)

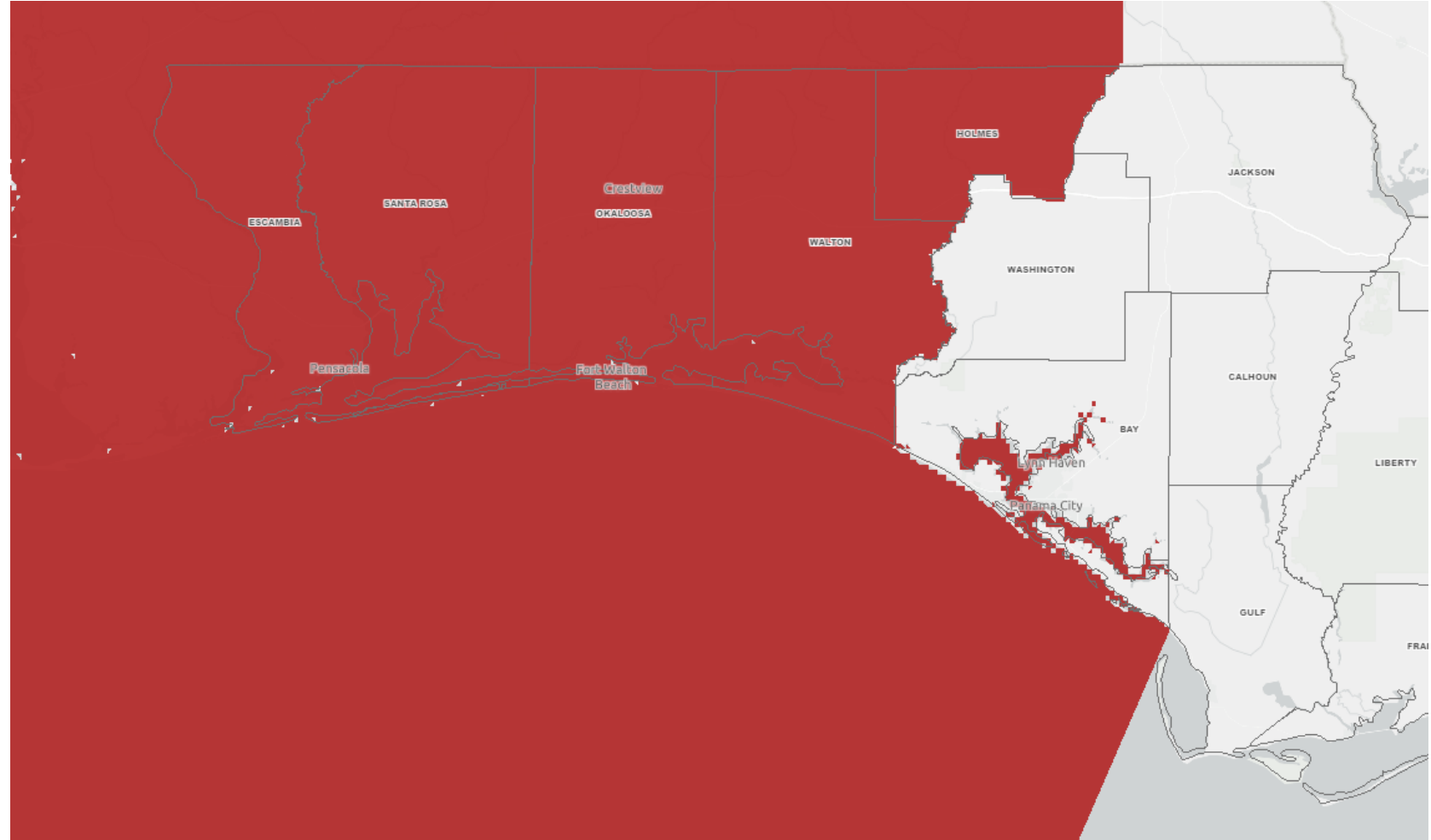
Wind Threat
Potential for wind greater than 110 mph
Potential for wind 74 to 110 mph
Potential for wind 58 to 73 mph
Potential for wind 39 to 57 mph
Wind less than 39 mph



Wind Watches and Warnings

In Effect Until Further Notice

Tropical Storm Warnings are in effect for Escambia, Santa Rosa, Okaloosa, Walton, and Holmes Counties.





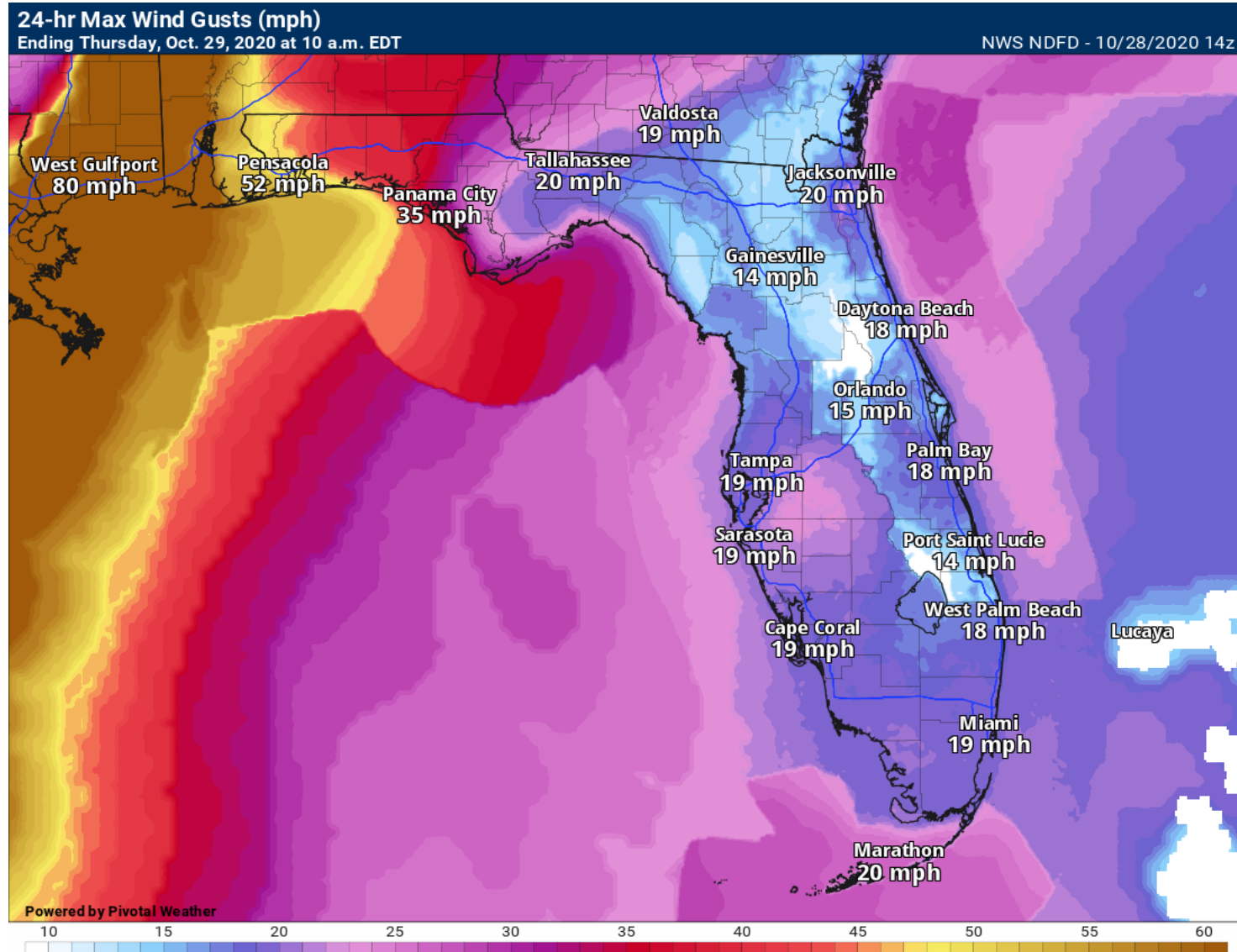
Maximum Wind Gusts

Next 24 Hours

Wind gusts of 40-55 mph will be possible over the western Panhandle.

Gusts of 60-70 mph are possible in the rain bands, especially closer to Pensacola.

Tropical Storm Warnings are in effect for coastal Escambia, Santa Rosa, Okaloosa, Walton, and Holmes





Surge Watches and Warnings

In Effect Until Further Notice

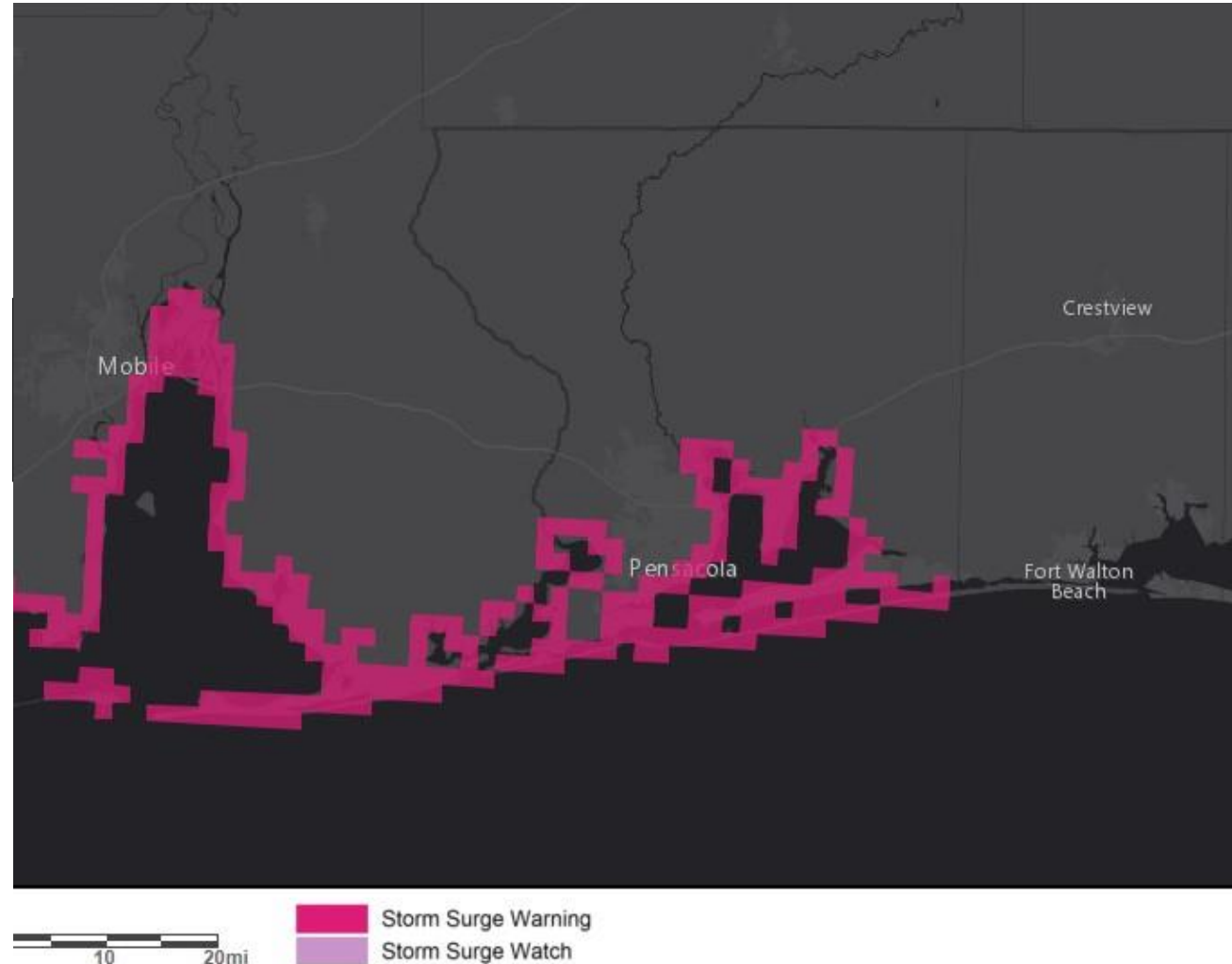
Storm Surge Warnings are in effect from the **Alabama/Florida line eastward to Navarre Beach**, including Perdido Bay, Pensacola Bay, and Santa Rosa Sound.

This includes Escambia County and most of Santa Rosa County.

Coastal Flood Advisories are in effect from Okaloosa County through Dixie County.

https://www.nhc.noaa.gov/refresh/graphics_at3+shtml/204401.shtml?wsurge#contents

Interactive Watch/Warning Map





Storm Surge/Coastal Flooding

Wednesday – Hurricane Zeta

Onshore winds associated with Zeta will result in some minor coastal flooding along the Panhandle, particularly at high tide today through Thursday.

Moderate flood stage at Pensacola can't be ruled out.

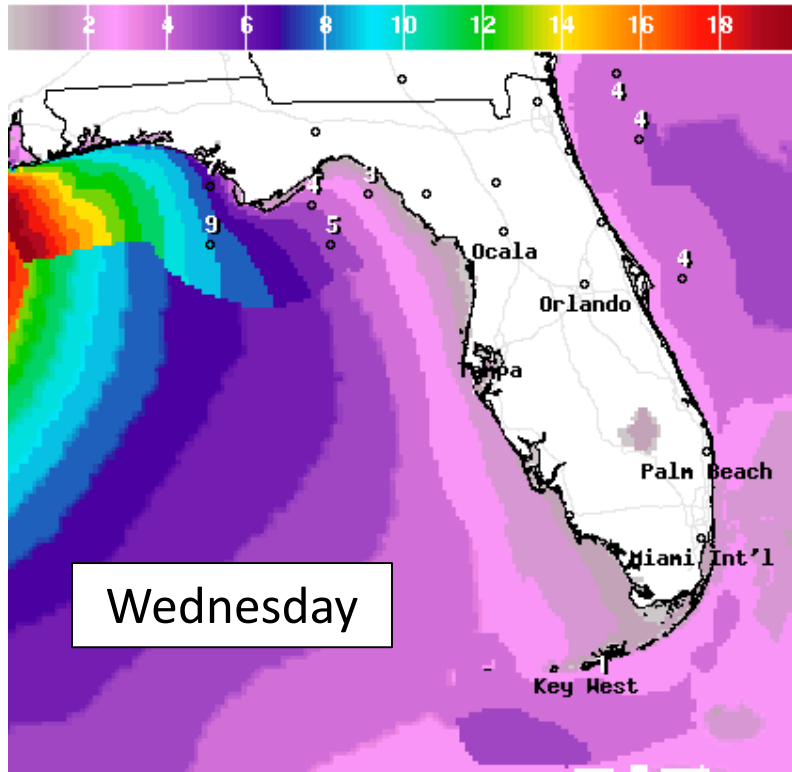
2-4' of storm surge is possible in the western Panhandle, including Pensacola Bay with 1-3' further east into Apalachee Bay.





Forecast Wave Heights

Today & Thursday

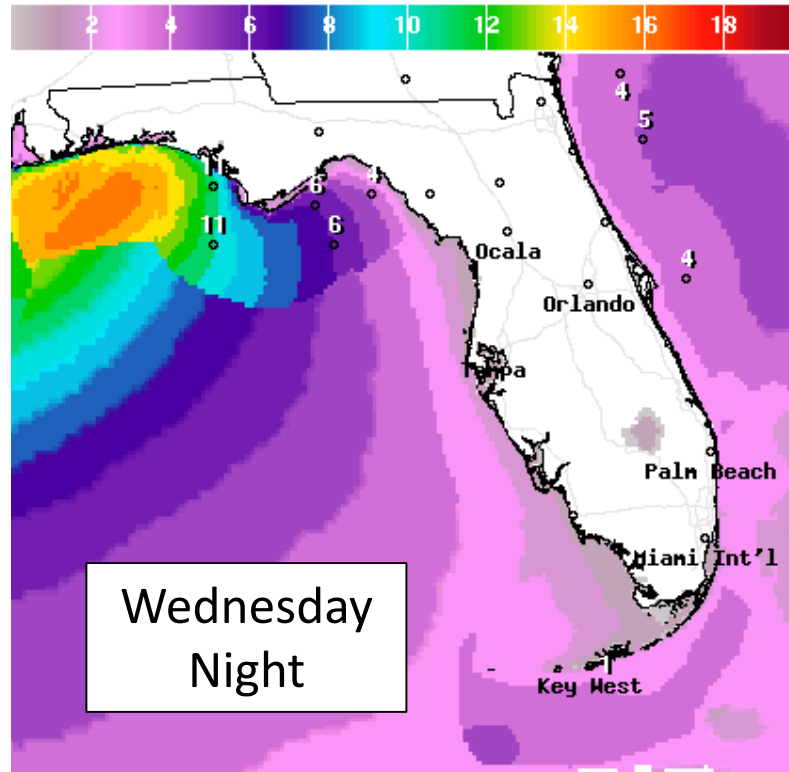


Wave Height(ft) Ending Wed Oct 28 2020 8PM EDT
(Thu Oct 29 2020 00Z)



National Digital Forecast Database

06z issuance Graphic created-Oct 28 3:01AM EDT

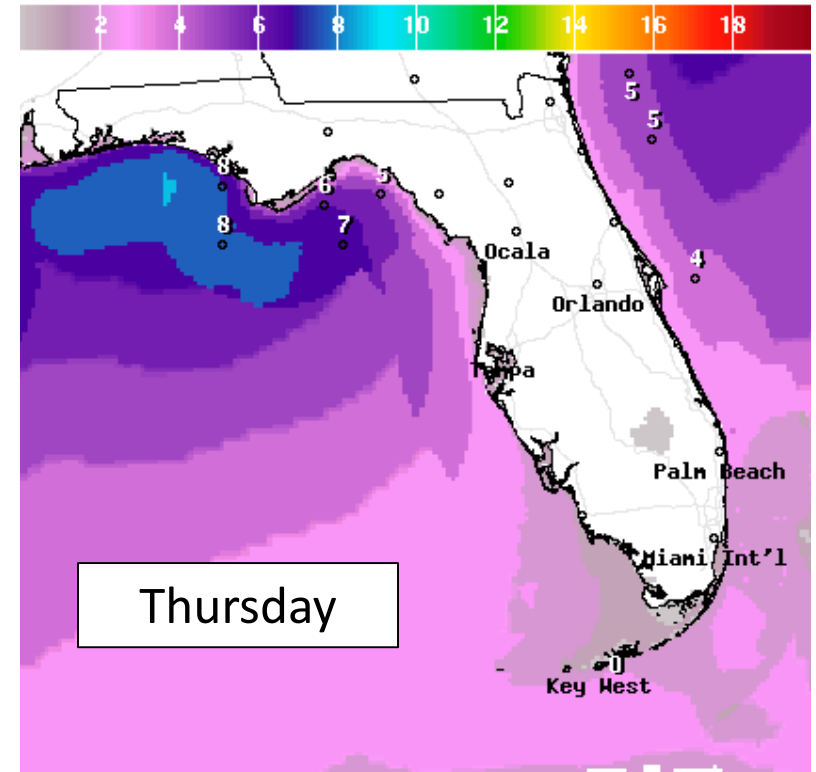


Wave Height(ft) Ending Thu Oct 29 2020 2AM EDT
(Thu Oct 29 2020 06Z)



National Digital Forecast Database

06z issuance Graphic created-Oct 28 3:01AM EDT



Wave Height(ft) Ending Thu Oct 29 2020 2PM EDT
(Thu Oct 29 2020 18Z)



National Digital Forecast Database

06z issuance Graphic created-Oct 28 3:01AM EDT



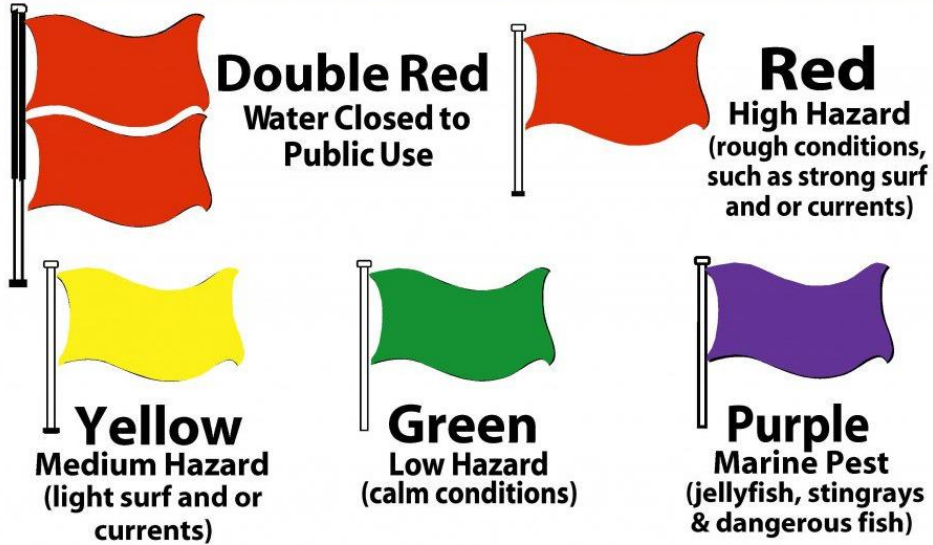
Wave heights will gradually build along the Panhandle. Wave heights will peak at 10-15' tonight, in the western Panhandle and 8-12' further east. Beach erosion with a few spots of more significant erosion/overwash is possible in the western Panhandle, especially in areas with damaged dune lines from Sally.



Rip Current Outlook

Today

BEACH FLAG WARNING SYSTEM



Extremely dangerous rip currents are expected at Gulf Coast beaches through Thursday, possibly into Friday.





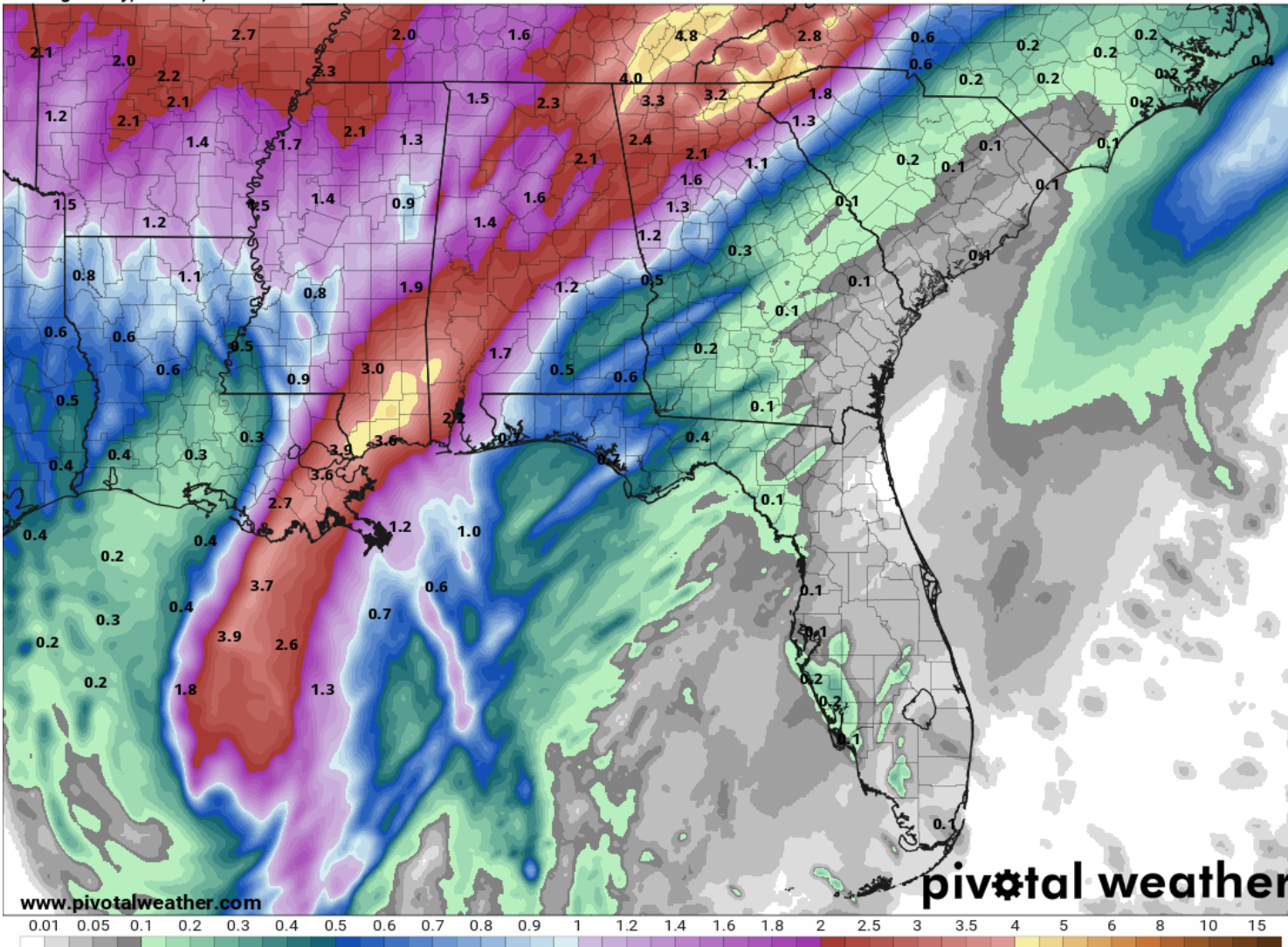
Rainfall Totals Next 48 Hours

Ending 8 AM ET Thursday

48-Hour Precipitation (in)

Ending Friday, Oct. 30, 2020 at 8 a.m. EDT

Init: Wed 2020-10-28 12z WPC



Zeta will be moving quick limiting the flash flood risk. 1-2" of rain is currently expected across the Panhandle through Wednesday night, with locally higher amounts of 4-6".

There are no flash flood watches at this time.



Flash Flood Outlook

From the Weather Prediction Center ([LINK](#))



Isolated flash flooding is possible today & tonight in the western Panhandle, especially if rain bands begin training.

Understanding WPC Excessive Rainfall Risk Categories

No Area/Label	MARGINAL (MRGL)	SLIGHT (SLGT)	MODERATE (MDT)	HIGH (HIGH)
Flash floods are generally not expected.	Isolated flash floods possible	Scattered flash floods possible	Numerous flash floods likely	Widespread flash floods expected
@NWSWPC	Localized and primarily affecting places that can experience rapid runoff with heavy rainfall.	Mainly localized. Most vulnerable are urban areas, roads, small streams and washes. Isolated significant flash floods possible.	Numerous flash flooding events with significant events possible. Many streams may flood, potentially affecting larger rivers.	Severe, widespread flash flooding. Areas that don't normally experience flash flooding, could. Lives and property in greater danger.
Flash flooding near me?	Flash Flooding	Flash Flooding	Flash Flooding	Flash Flooding
NO Flash Flooding				
 WEATHER PREDICTION CENTER				

Risk of rainfall exceeding flash flood guidance within 25 miles of a point to the right of a line

HIGH: > 50%

SLGT: 10%-20%

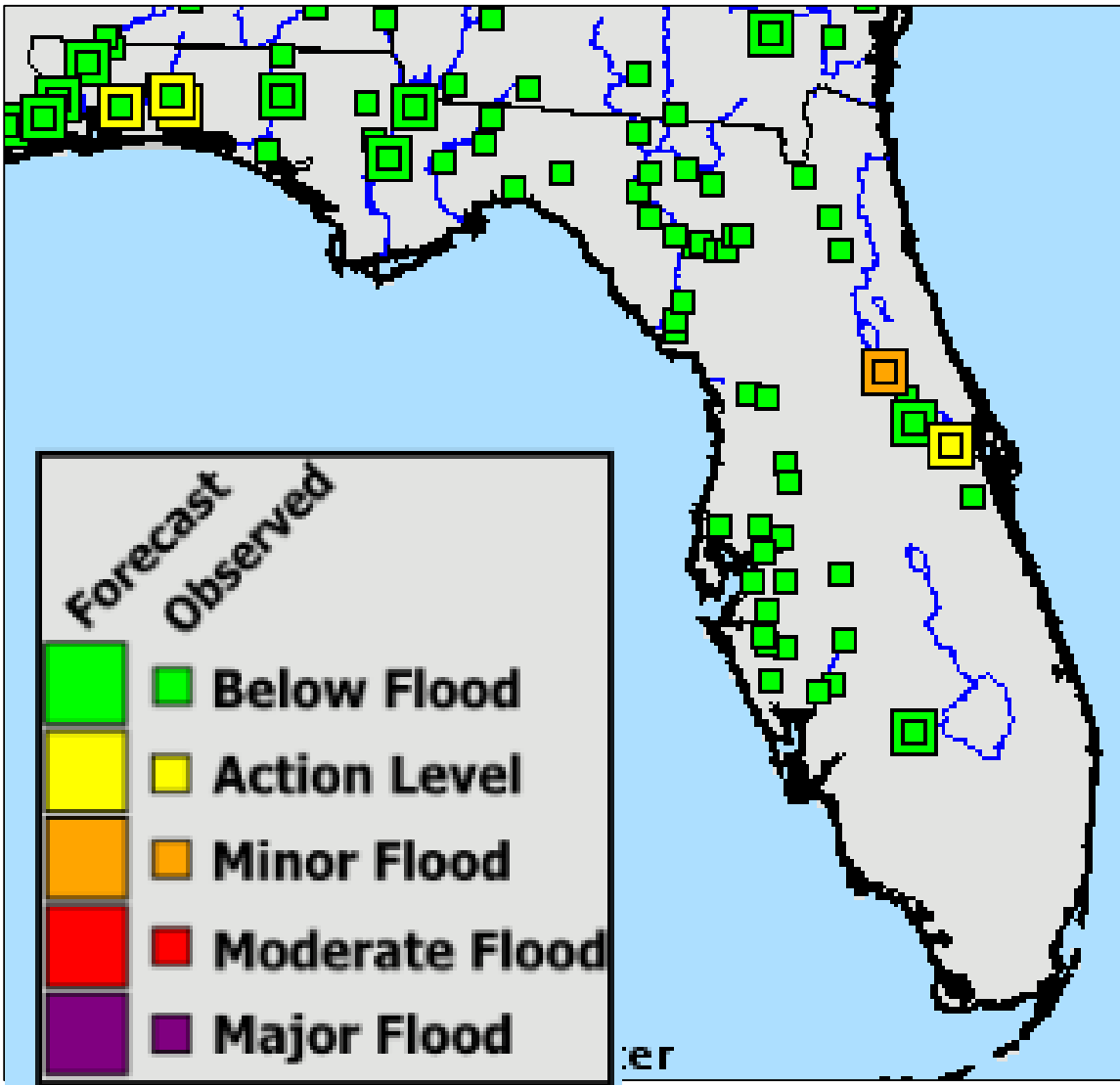
MDT: 20%-50%

MRGL: 5%-10%



River Forecast

Current and Forecast River Levels



Rivers, streams, and creeks continue to run high from recent heavy rainfall.

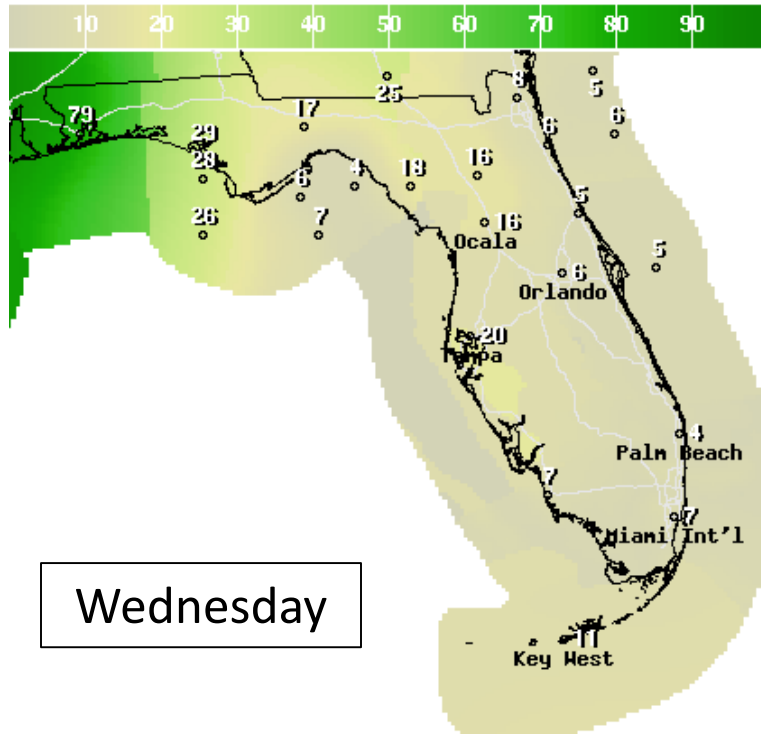
However, Zeta will be quick, limiting the river flood threat.

Rainfall totals over 4" will generally be needed to bring rivers to minor flood stage, but rises to bank-full (Action Stage) are anticipated in the western Panhandle based off of current rainfall forecasts of 1-3".

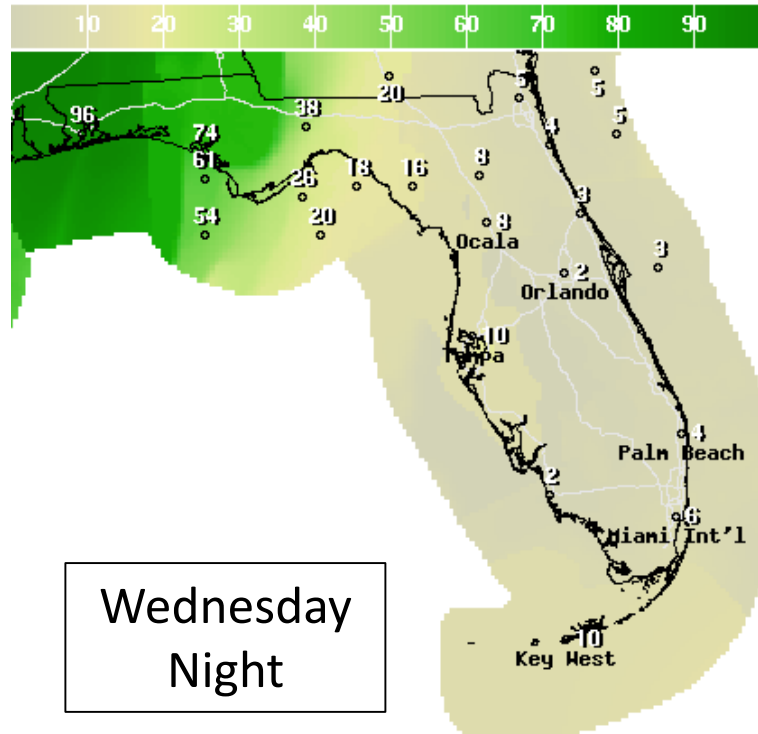


Forecast Rain Chances

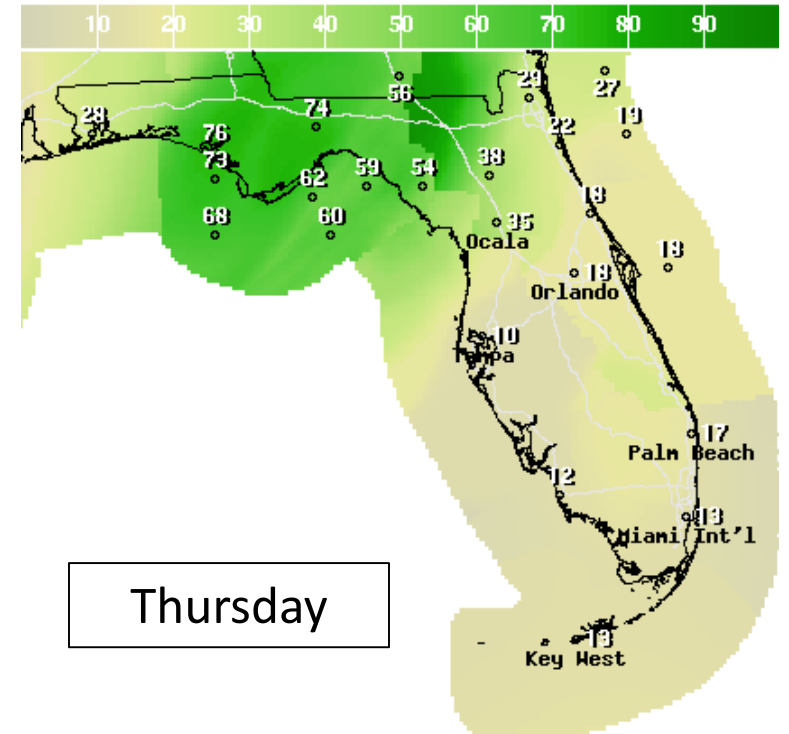
Next 2 Days



12Hr Prob.Precip(%) Ending Wed Oct 28 2020 8PM EDT
(Thu Oct 29 2020 00Z)
National Digital Forecast Database
08z issuance Graphic created-Oct 28 4:44AM EDT



12Hr Prob.Precip(%) Ending Thu Oct 29 2020 8AM EDT
(Thu Oct 29 2020 12Z)
National Digital Forecast Database
08z issuance Graphic created-Oct 28 4:44AM EDT



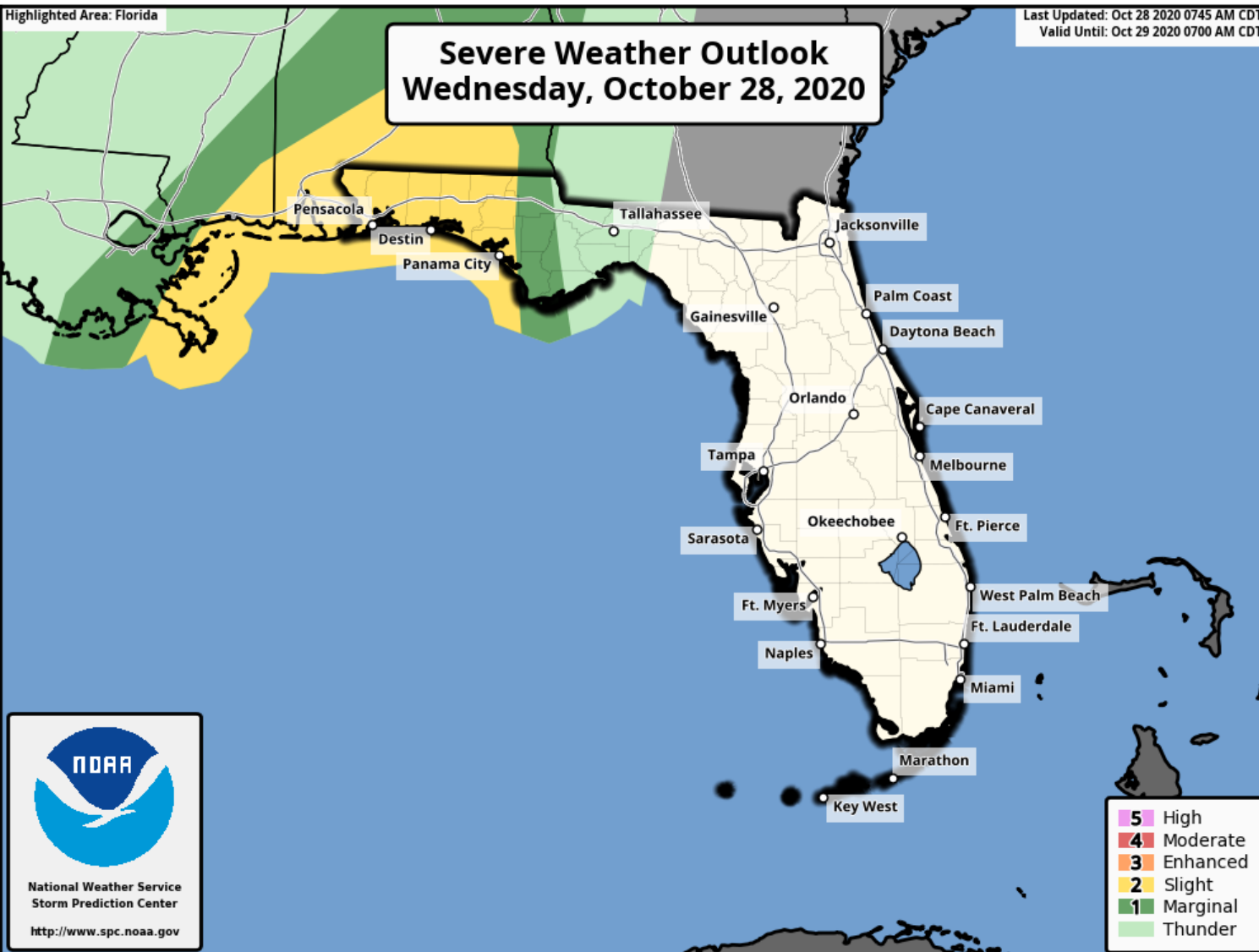
12Hr Prob.Precip(%) Ending Thu Oct 29 2020 8PM EDT
(Fri Oct 30 2020 00Z)
National Digital Forecast Database
08z issuance Graphic created-Oct 28 4:44AM EDT

Central & South Florida dry out after a long stretch of wet weather. Widespread rain chances are forecast today and tonight in the western Panhandle as Zeta moves inland, with rain chances continuing on Thursday across North Florida.



Severe Weather Outlook

From the Storm Prediction Center – Today & Tonight



As the outer bands from Zeta move through the Panhandle Wednesday evening and Wednesday night, a few tornadoes are possible. There is a **Slight Risk** (level 2 of 5) of Severe Weather, and Tornado Watches could be issued later this morning or afternoon.

Understanding Severe Thunderstorm Risk Categories

THUNDERSTORMS (no label)	1 - MARGINAL (MRGL)	2 - SLIGHT (SLGT)	3 - ENHANCED (ENH)	4 - MODERATE (MDT)	5 - HIGH (HIGH)
No severe* thunderstorms expected	Isolated severe thunderstorms possible	Scattered severe storms possible	Numerous severe storms possible	Widespread severe storms likely	Widespread severe storms expected
Lightning/flooding threats exist with <u>all</u> thunderstorms	Limited in duration and/or coverage and/or intensity	Short-lived and/or not widespread, isolated intense storms possible	More persistent and/or widespread, a few intense	Long-lived, widespread and intense	Long-lived, very widespread and particularly intense

* NWS defines a severe thunderstorm as measured wind gusts to at least 58 mph, and/or hail to at least one inch in diameter, and/or a tornado. All thunderstorm categories imply lightning and the potential for flooding. Categories are also tied to the probability of a severe weather event within 25 miles of your location.



National Weather Service

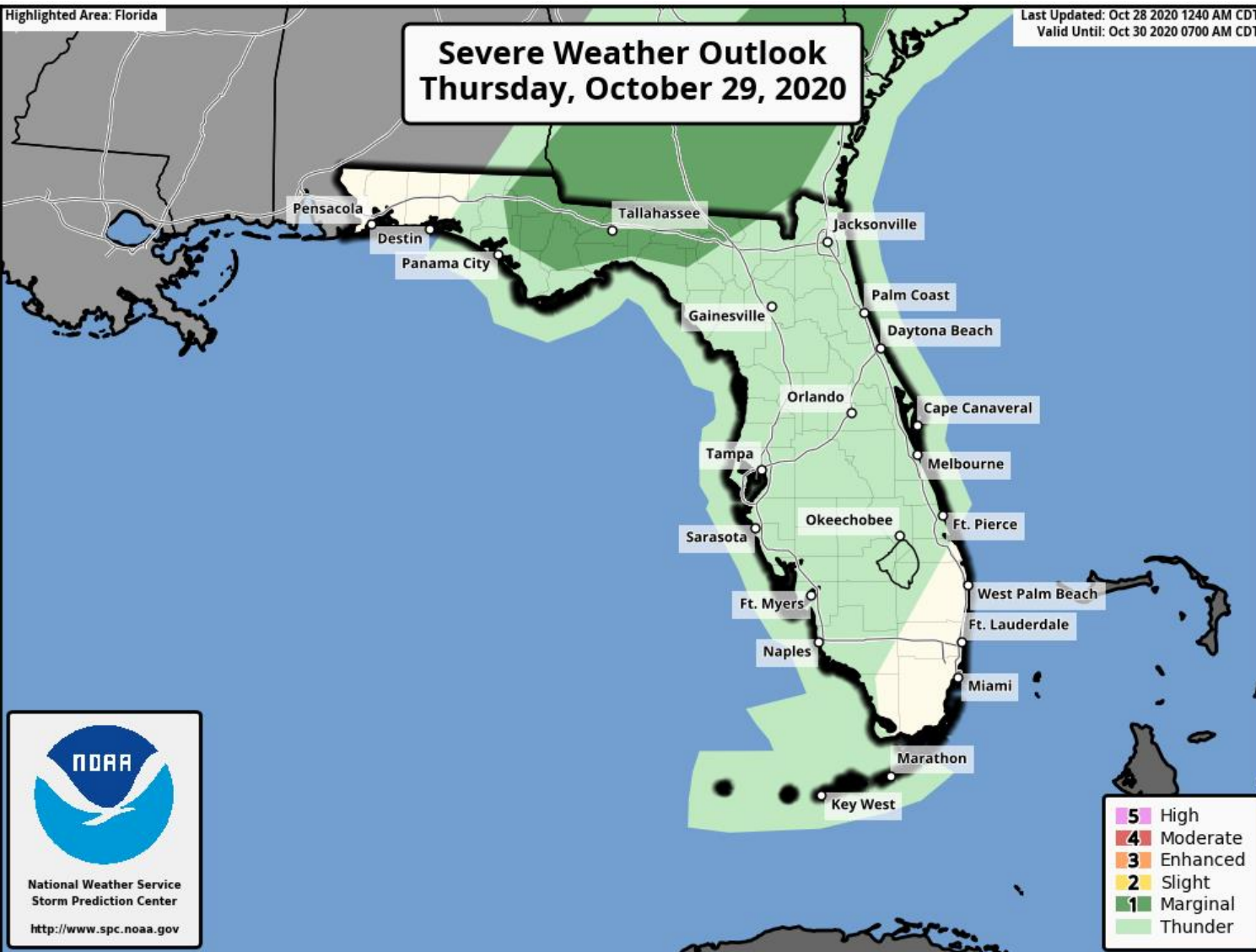
www.spc.noaa.gov





Severe Weather Outlook

From the Storm Prediction Center - Thursday



As the remnant outer bands of Zeta and a weak cold front move through North Florida on Thursday, an isolated tornado or damaging wind gust is possible. There is a **Marginal Risk** (level 1 of 5) of Severe Weather.

Understanding Severe Thunderstorm Risk Categories

THUNDERSTORMS (no label)	1 - MARGINAL (MRGL)	2 - SLIGHT (SLGT)	3 - ENHANCED (ENH)	4 - MODERATE (MDT)	5 - HIGH (HIGH)
No severe* thunderstorms expected	Isolated severe thunderstorms possible	Scattered severe storms possible	Numerous severe storms possible	Widespread severe storms likely	Widespread severe storms expected
Lightning/flooding threats exist with <u>all</u> thunderstorms	Limited in duration and/or coverage and/or intensity	Short-lived and/or not widespread, isolated intense storms possible	More persistent and/or widespread, a few intense	Long-lived, widespread and intense	Long-lived, very widespread and particularly intense

* NWS defines a severe thunderstorm as measured wind gusts to at least 58 mph, and/or hail to at least one inch in diameter, and/or a tornado. All thunderstorm categories imply lightning and the potential for flooding. Categories are also tied to the probability of a severe weather event within 25 miles of your location.



National Weather Service

www.spc.noaa.gov





Florida Outlook

Florida Outlook:

- Zeta is a Category 1 Hurricane with 90 mph winds and is located about 235 miles south-southwest of New Orleans, LA.
- Zeta will be moving quickly to the northeast on Wednesday night at the time of landfall, with the center likely making its closest approach to Florida as it tracks across southern Alabama overnight.
- ***However, impacts will occur well away from the center, particularly to the east of landfall as Zeta is likely to be lopsided.***
- Tropical Storm Warnings are in effect for Escambia, Santa Rosa, Okaloosa, Walton, and Holmes.
- If tropical storm force winds were to occur, it would most likely be tonight into early Thursday.
- Storm Surge Warnings are in effect from the Alabama/Florida border to Navarre Beach, including Pensacola Bay.
- Storm surge of 2-4' is forecast for the western Panhandle and 1-3' eastward towards Cedar Key on Wednesday.
- Dangerous rip currents and beach erosion are expected with wave heights 8-15' along the western Panhandle.
- Locally heavy rainfall is possible across the Panhandle through Thursday. 1-2" of rain is likely, but locally higher amounts of 4-6" are possible. Flash flooding and minor river flooding are possible with the higher totals.
- A few tornadoes are possible in outer bands across the Panhandle, possibly beginning this afternoon and continuing into tonight. There is currently a Slight Risk (Level 2 of 5) of severe weather. Tornado watches may be issued later this morning or afternoon.

The next briefing packet will be issued with the 5 PM ET NHC advisory. For the latest information on the tropics, please visit the National Hurricane Center website at www.hurricanes.gov.



TROPICAL UPDATE



Created by:

Cameron Young, Assistant State Meteorologist

Cameron.Young@em.myflorida.com

State Meteorological Support Unit

Florida Division of Emergency Management

Users wishing to subscribe (approval pending) to this distribution list, register at:

https://public.govdelivery.com/accounts/FLDEM/subscriber/new?topic_id=SERT_Met_Tropics.

Other reports available for subscription are available at:

<https://public.govdelivery.com/accounts/FLDEM/subscriber/new?preferences=true>