



TROPICAL UPDATE



8:00 AM EDT

Wednesday, October 28, 2020

Hurricane Zeta

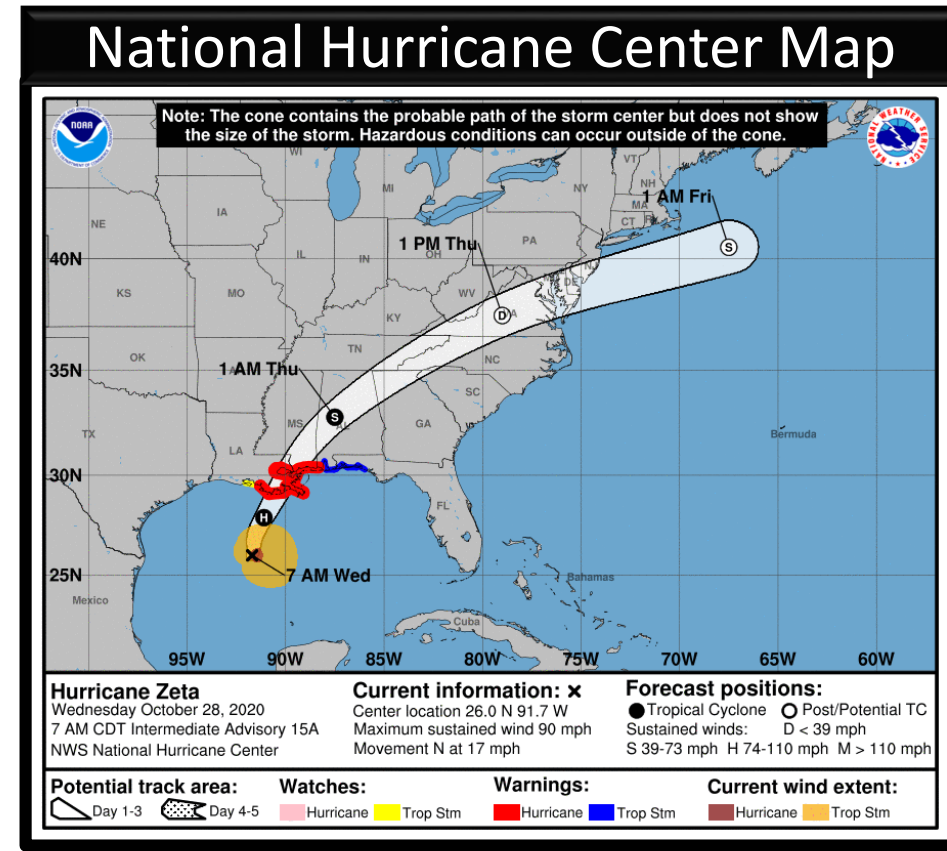
This update is intended for government and emergency response officials, and is provided for informational and situational awareness purposes only. Forecast conditions are subject to change based on a variety of environmental factors. For additional information, or for any life safety concerns with an active weather event please contact your County Emergency Management or Public Safety Office, local National Weather Service forecast office, or visit the National Hurricane Center website at www.hurricanes.gov.



Hurricane Zeta

8 AM Wednesday: Florida Threats & Changes Since Last Packet

| | MINIMAL | Low | MODERATE | HIGH | EXTREME |
|----------------|---------|----------|----------|------|---------|
| WINDS | | | | | |
| STORM SURGE | | | | | |
| FLASH FLOODING | | | | | |
| TORNADOES | | | | | |
| | Low | MODERATE | | HIGH | |
| RIP CURRENTS | | | | | |



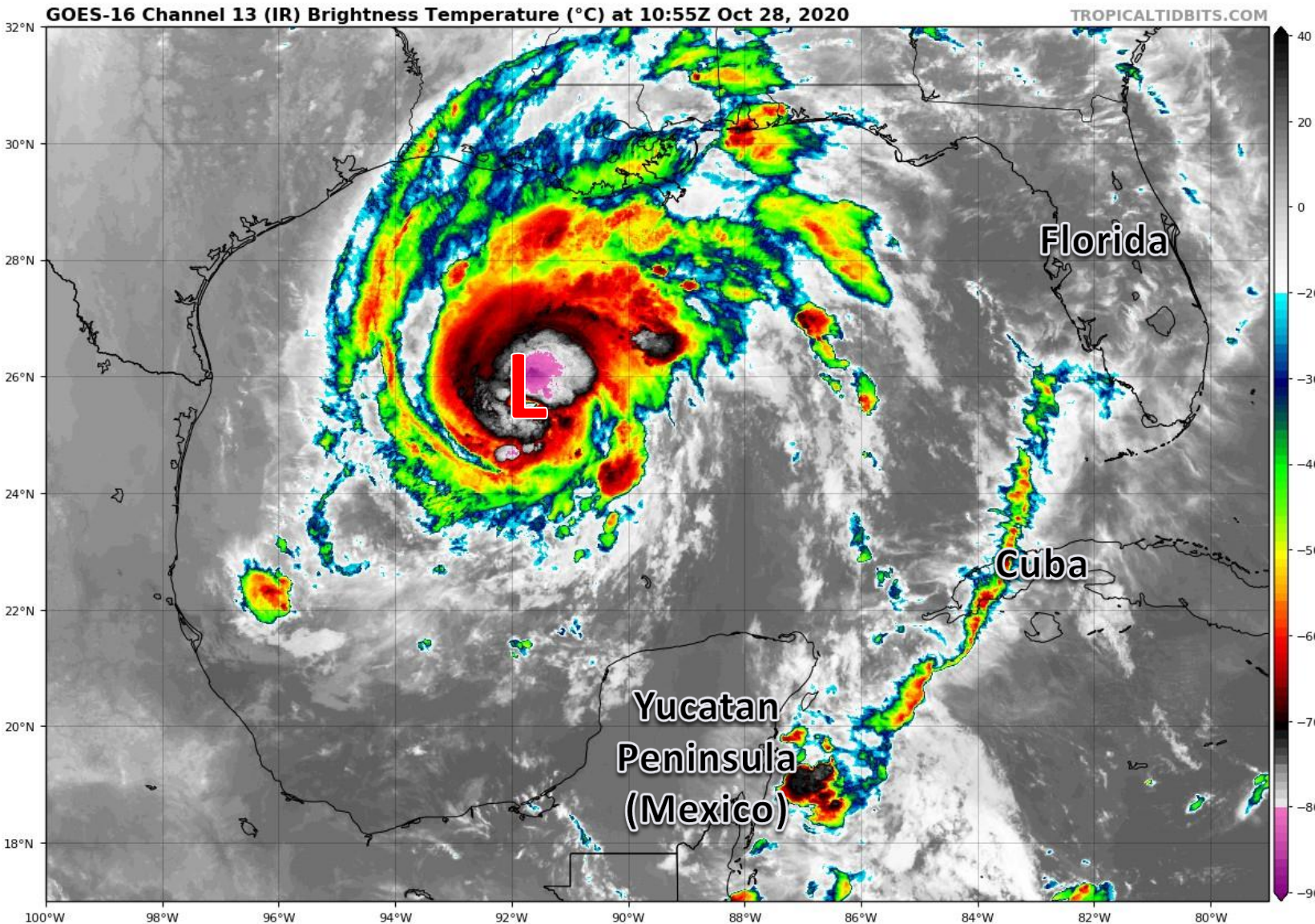
Overview/Recent Changes:

Zeta has become a hurricane yet again over the Gulf, and is not expected to become a Category 2 hurricane before landfall. Tropical Storm Warnings extended to Walton and Holmes Counties. Impacts will still extend well east of the center into the Panhandle Wednesday night.

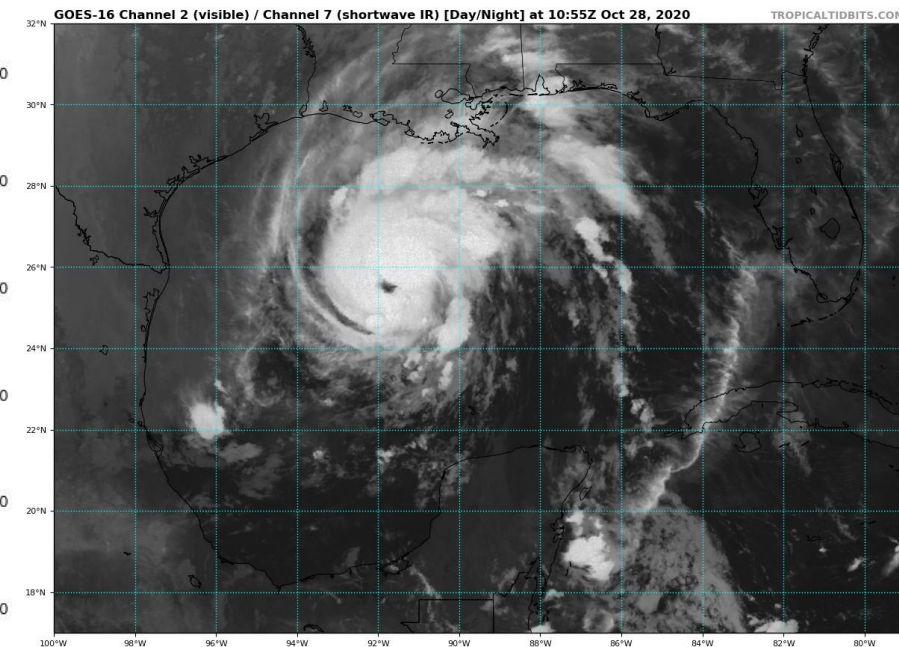


Satellite Imagery

Hurricane Zeta – Gulf of Mexico



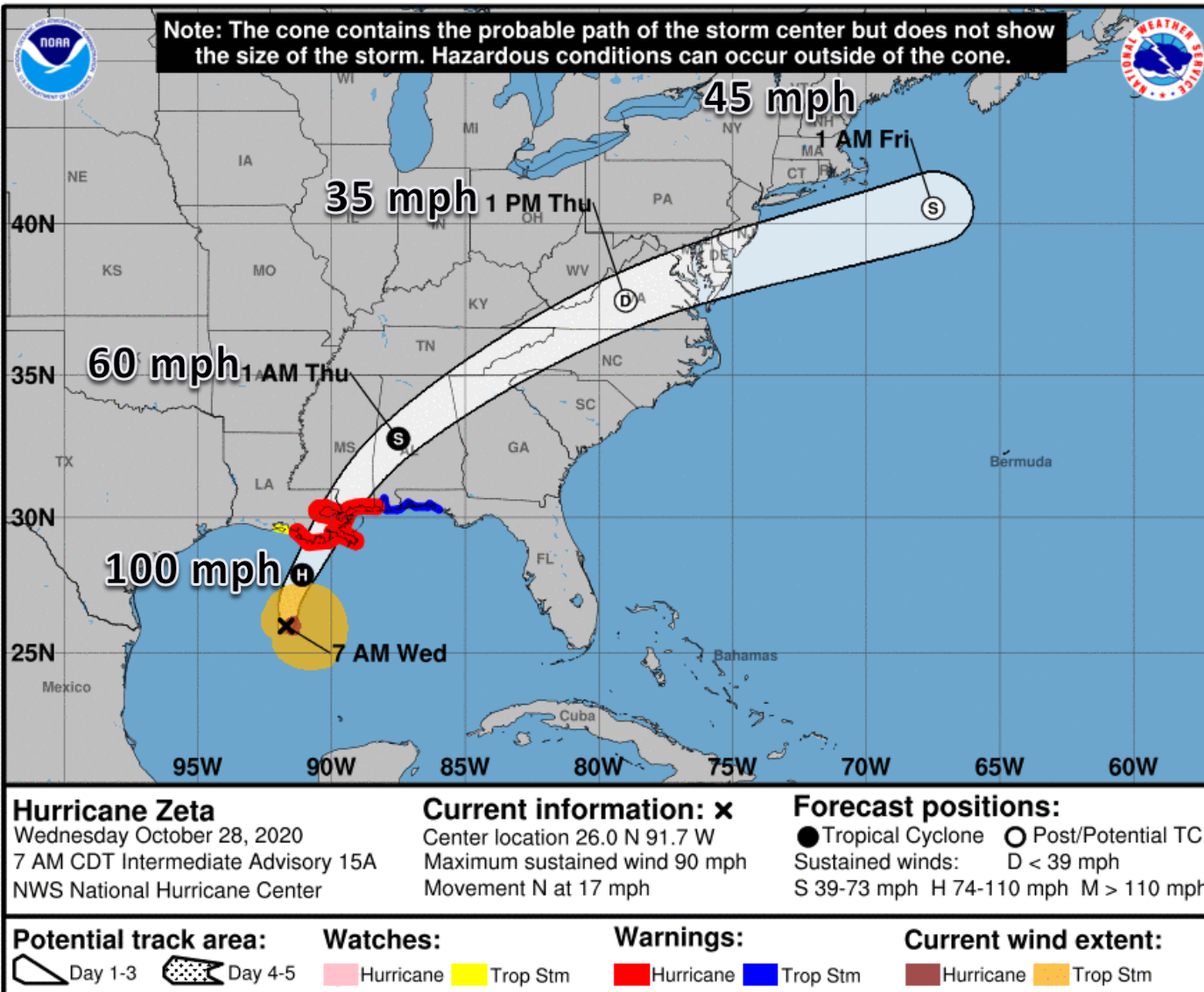
Zeta has become much better organized overnight and has resumed strengthening. Further intensification remains possible prior to landfall. Cooler water temperatures and stronger wind shear may inhibit strengthening this afternoon before landfall.





Official Forecast Track

From the National Hurricane Center – Hurricane Zeta



- The center is located about 295 miles south of New Orleans, LA, or about 410 miles southwest of Pensacola, FL, north at 17 mph.
- A turn towards the northeast is forecast on today as a cold front moves into the south and accelerates Zeta towards the Gulf Coast.
- Zeta has maximum sustained winds of 90 mph (Category 1 Hurricane). Additional strengthening is possible, and Zeta is forecast to make landfall as a Category 2 hurricane.
- With its fast forward speed, strong winds are expected well inland over the southeast US.



Damaging Wind Threat Overview

Tropical Storm Zeta

The greatest wind threat will be in the western Panhandle, where wind gusts of 60-70 mph may occur Wednesday night. Sustained winds of 40-50 mph are possible.

Gusts to tropical storm force (40-50 mph) remain possible in the eastern Panhandle to the Apalachicola River, particularly in any rain bands that move through late Wednesday night and early Thursday morning.

[https://www.weather.gov/srh/tropical?
office=mob](https://www.weather.gov/srh/tropical?office=mob)

Click on "Threats and Impacts" Tab



[\[Download KML\]](#)

[\[Download Image\]](#)

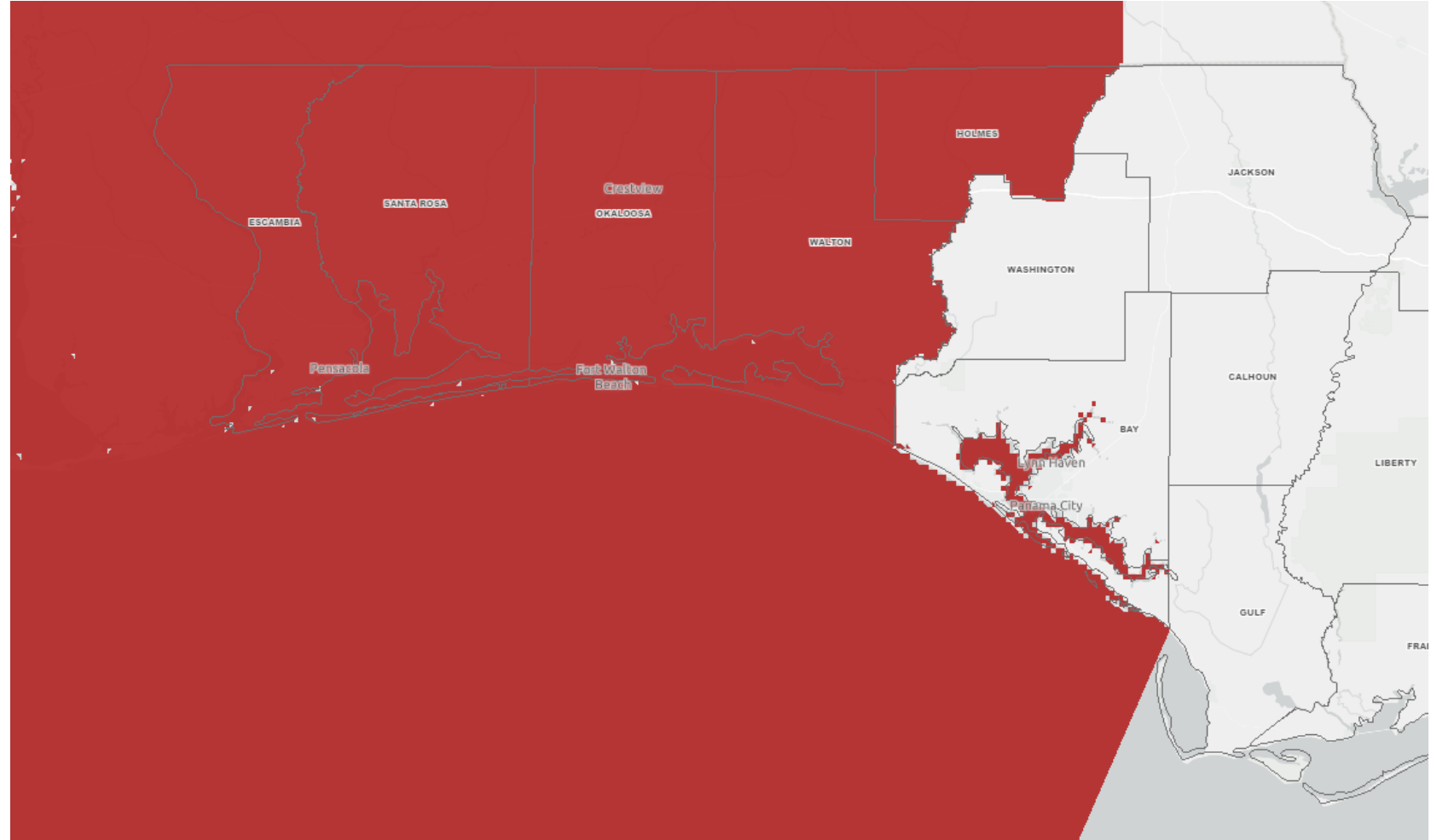
| Wind Threat |
|---|
| Potential for wind greater than 110 mph |
| Potential for wind 74 to 110 mph |
| Potential for wind 58 to 73 mph |
| Potential for wind 39 to 57 mph |
| Wind less than 39 mph |



Wind Watches and Warnings

In Effect Until Further Notice

Tropical Storm Warnings are in effect for Escambia, Santa Rosa, Okaloosa, Walton, and Holmes Counties.



Tropical Storm & Hurricanes

Watches Versus Warnings

WATCH

Tropical storm and/or hurricane conditions are **POSSIBLE** in Watch area

Issued up to 48 hours in advance of tropical storm force winds

WARNING

Tropical storm and/or hurricane conditions are **EXPECTED** in Warning area

Issued up to 36 hours in advance of onset of tropical storm force winds

Hurricane preparedness activities become difficult once winds reach tropical storm force. **Watches & Warnings are issued in advance of onset of tropical storm force winds, 39-73mph**



NWSMobile



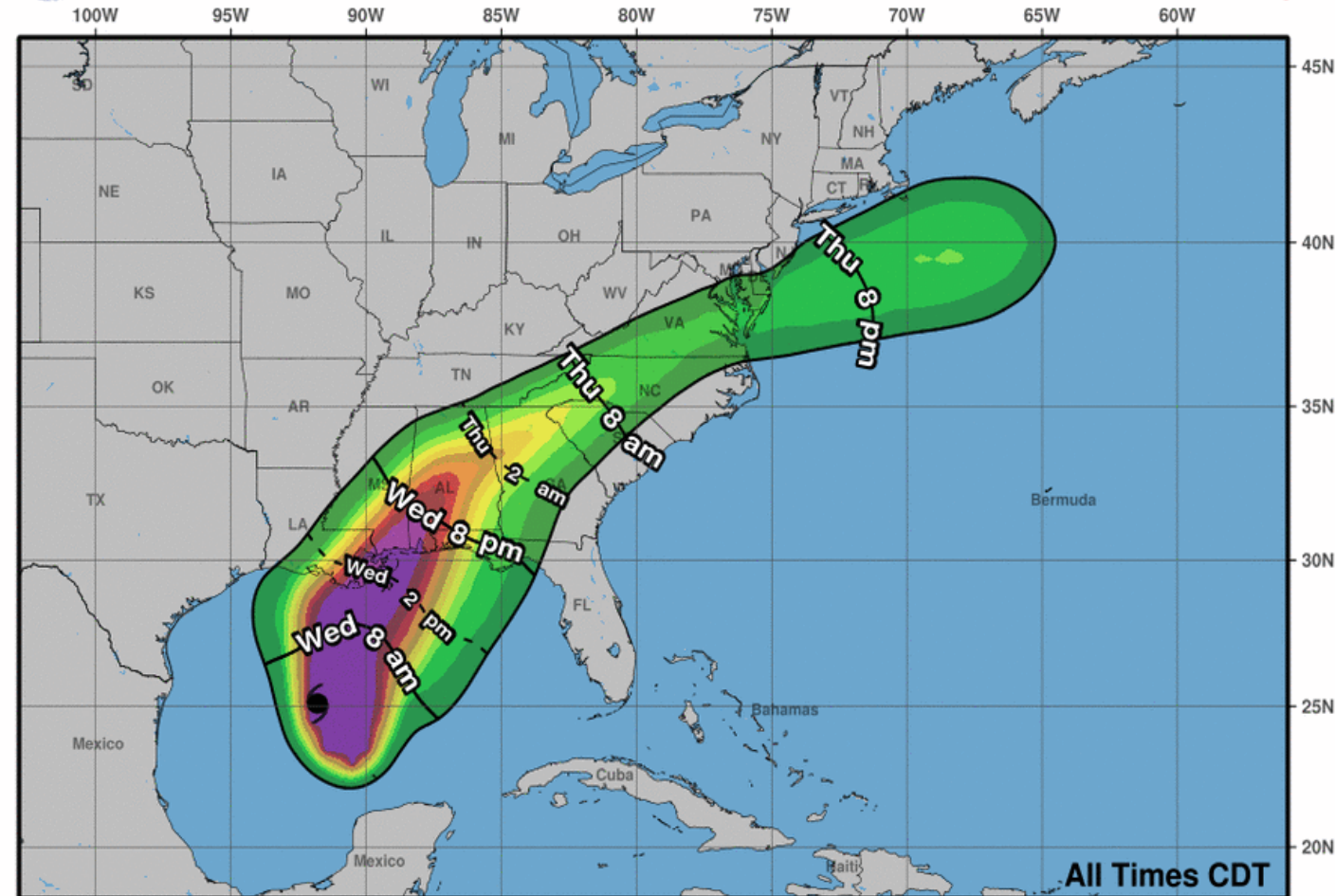
weather.gov/mob



Time of Arrival & Wind Speed Probabilities

MOST LIKELY Time of Arrival of Tropical Storm Force Winds (>39 mph)

Most Likely Arrival Time of Tropical-Storm-Force Winds



Pensacola NAS: 72% (+17)

Pensacola: 69% (+17)

Milton: 66% (+17)

Destin: 44% (+8)

Panama City: 19% (+/-0)

Apalachicola: 11% (-2)

Tallahassee: 10% (+/-0)

Numbers in Parentheses are changes in probabilities since the last packet

Tropical storm force winds could begin Wednesday afternoon along the coast, but would most likely begin in the evening and overnight.

The odds of tropical storm force winds have **INCREASED** in the western Panhandle. *Be prepared for strong, damaging winds.*

Hurricane Zeta
Wed. Oct. 28, 2020 4 am CDT
Advisory 15

Storm Location & Wind Speed
○ < 34 kt (39 mph)
○ 34-63 kt (39-73 mph)
● ≥ 64 kt (74 mph)

5-day chance of receiving sustained 34+ kt (39+ mph) winds
5 10 20 30 40 50 60 70 80 90 100 %



Surge Watches and Warnings

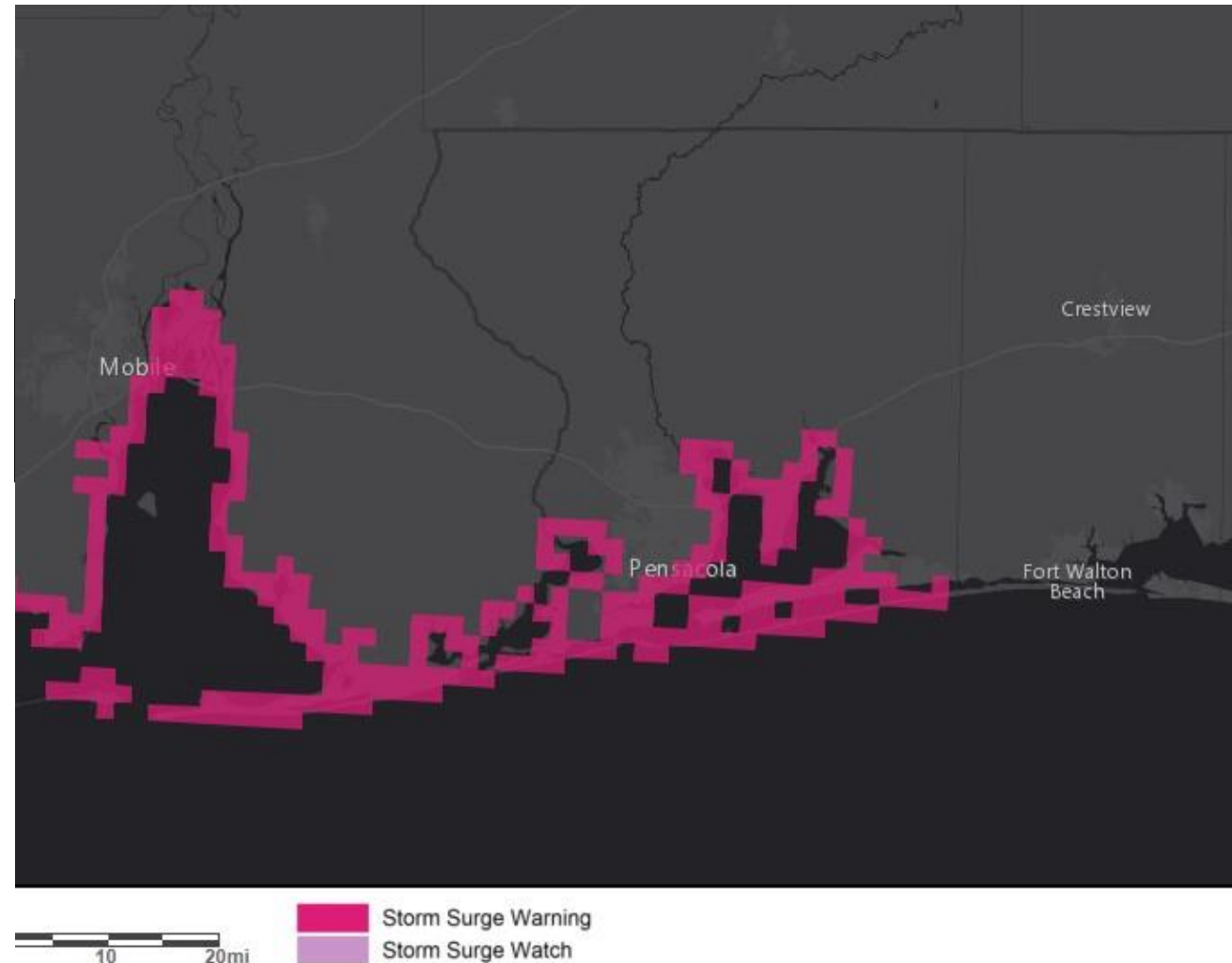
In Effect Until Further Notice

Storm Surge Warnings are in effect from the **Alabama/Florida line eastward to Navarre Beach**, including Perdido Bay, Pensacola Bay, and Santa Rosa Sound.

This includes Escambia County and most of Santa Rosa County.

https://www.nhc.noaa.gov/refresh/graphics_at3+shtml/204401.shtml?wsurge#contents

Interactive Watch/Warning Map



Storm Surge Warning

There is a **danger of life-threatening inundation** from rising water moving inland from the shoreline generally **within 36 hours**.

Promptly follow evacuation and other instructions from local officials.

Storm Surge Watch

There is a **possibility of life-threatening inundation** from rising water moving inland from the shoreline generally **within 48 hours**.

Promptly follow evacuation and other instructions from local officials.





Storm Surge/Coastal Flooding

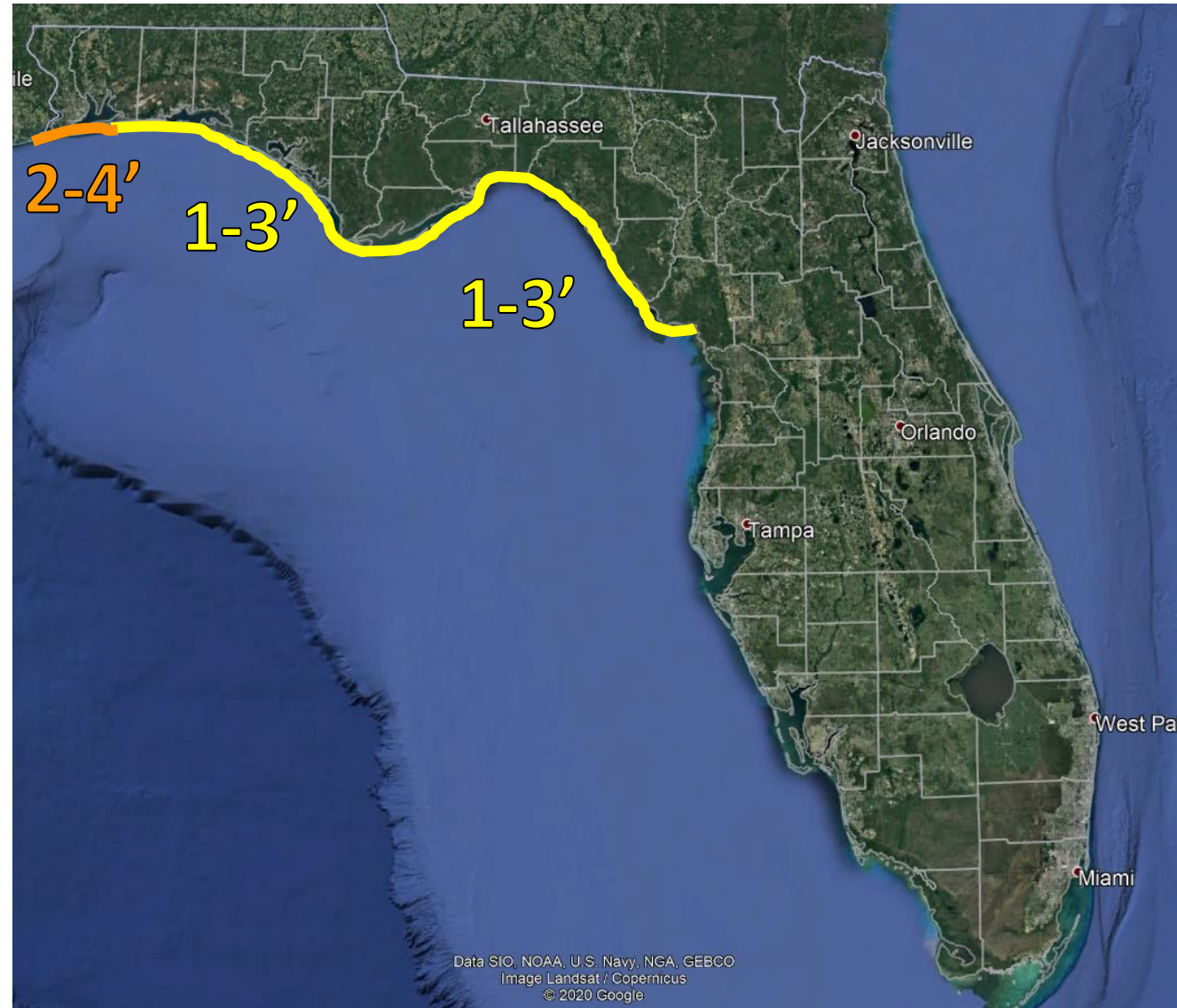
Wednesday – Hurricane Zeta

Onshore winds associated with Zeta will result in some minor coastal flooding along the Panhandle, particularly at high tide Wednesday and Wednesday night.

Water levels will remain elevated on Thursday as they gradually return to normal.

Moderate flood stage at Pensacola can't be ruled out.

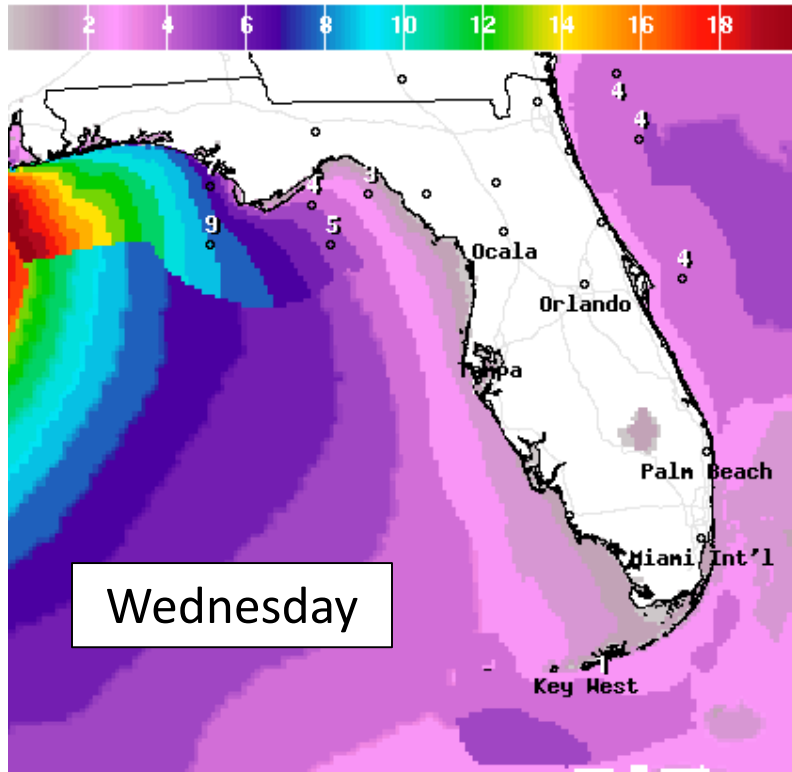
2-4' of storm surge is possible in the western Panhandle, including Pensacola Bay with 1-3' further east into Apalachee Bay.





Forecast Wave Heights

Today & Thursday

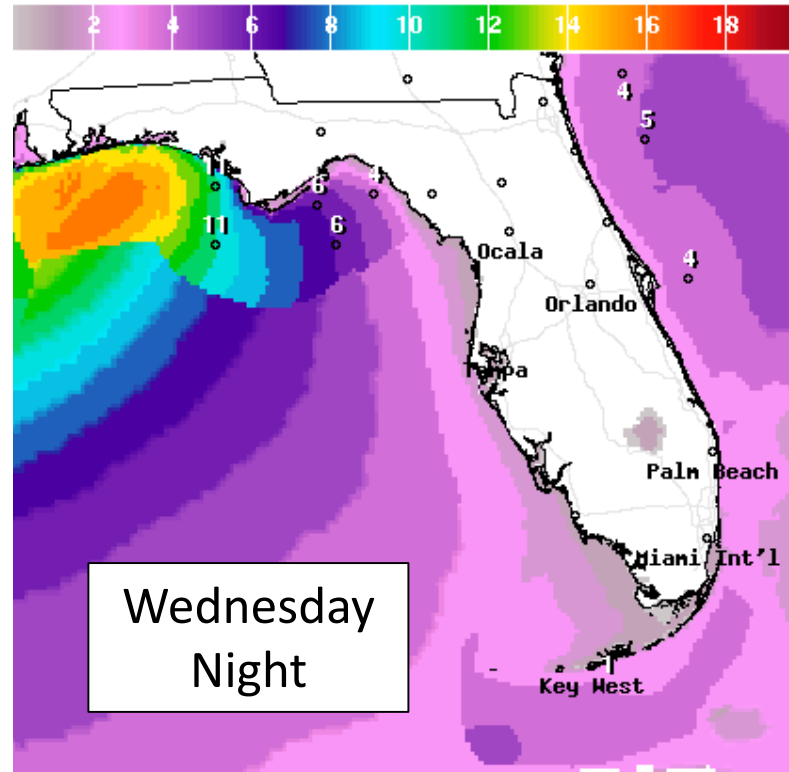


Wave Height(ft) Ending Wed Oct 28 2020 8PM EDT
(Thu Oct 29 2020 00Z)



National Digital Forecast Database

06z issuance Graphic created-Oct 28 3:01AM EDT

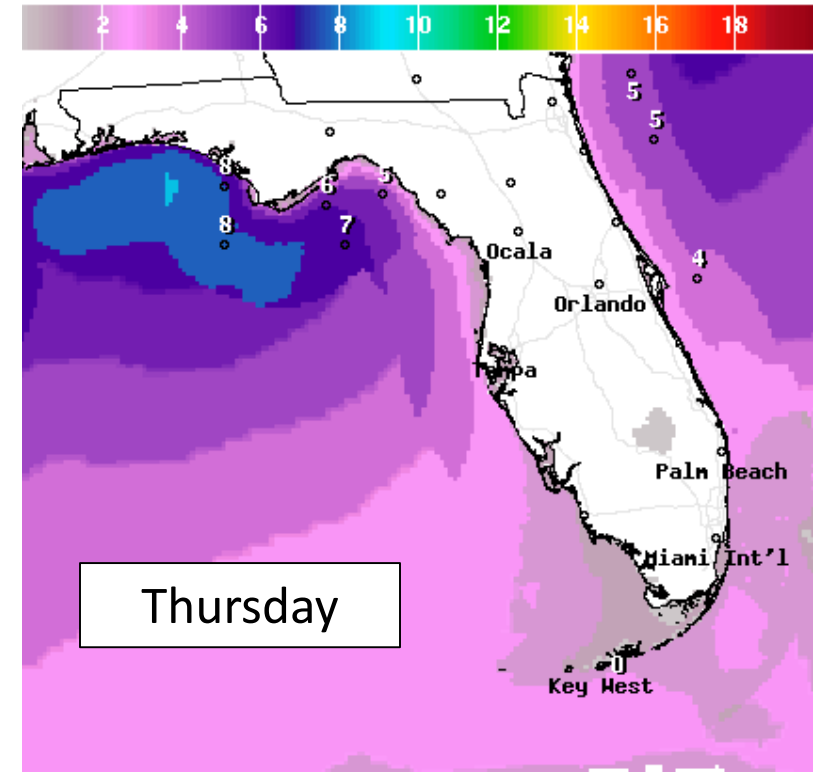


Wave Height(ft) Ending Thu Oct 29 2020 2AM EDT
(Thu Oct 29 2020 06Z)



National Digital Forecast Database

06z issuance Graphic created-Oct 28 3:01AM EDT



Wave Height(ft) Ending Thu Oct 29 2020 2PM EDT
(Thu Oct 29 2020 18Z)



National Digital Forecast Database

06z issuance Graphic created-Oct 28 3:01AM EDT



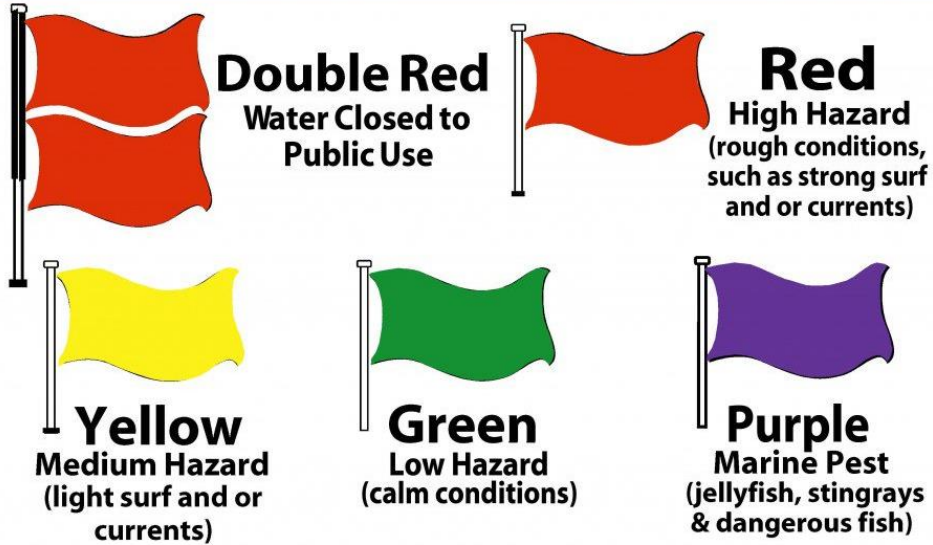
Wave heights will gradually build along the Panhandle. Wave heights will peak at 10-15' tonight, in the western Panhandle and 8-12' further east. Beach erosion with a few spots of more significant erosion/overwash is possible in the western Panhandle, especially in areas with damaged dune lines from Sally.



Rip Current Outlook

Today

BEACH FLAG WARNING SYSTEM



Extremely dangerous rip currents are expected at Gulf Coast beaches through Thursday, possibly into Friday.





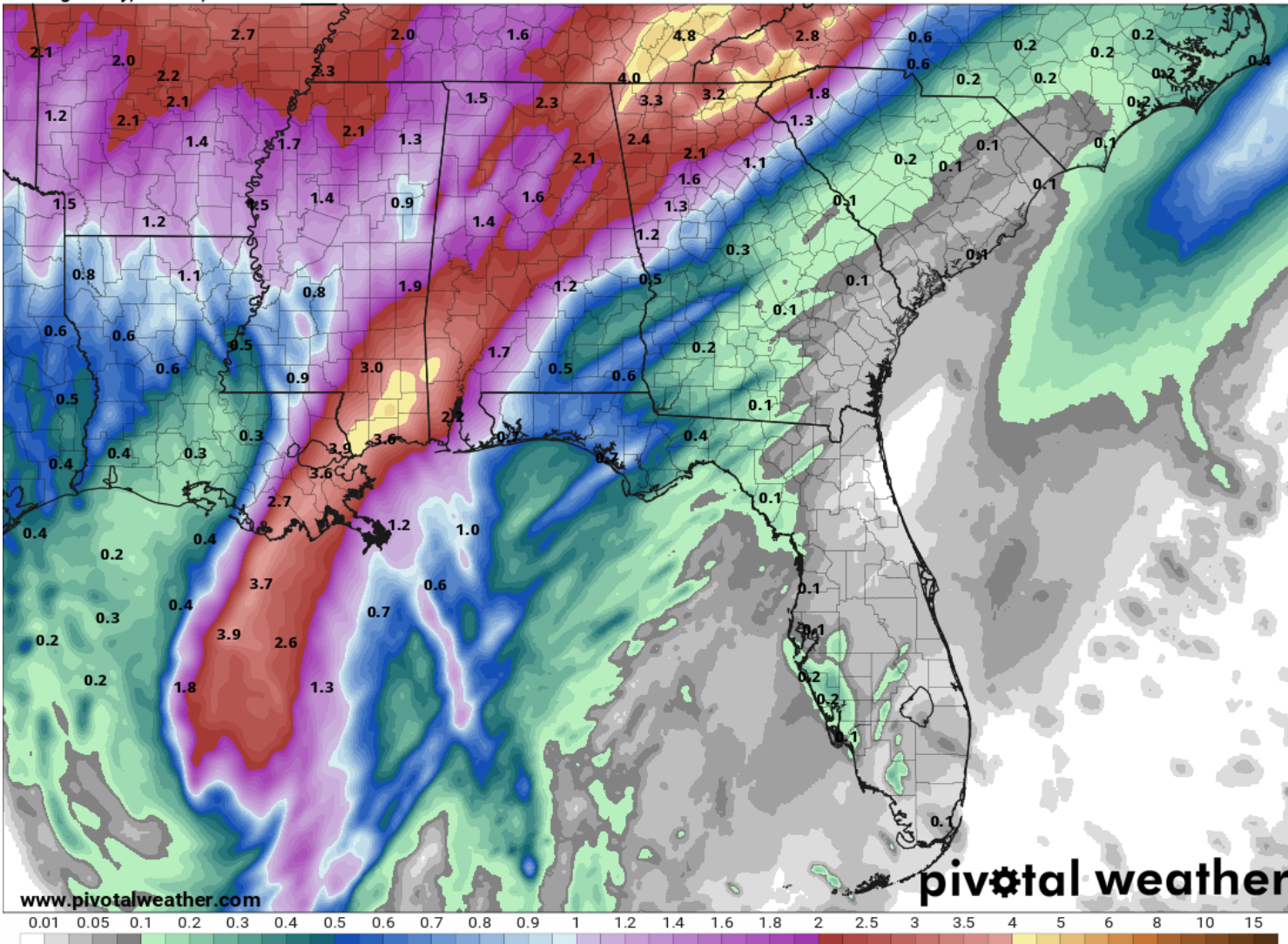
Rainfall Totals Next 48 Hours

Ending 8 AM ET Thursday

48-Hour Precipitation (in)

Ending Friday, Oct. 30, 2020 at 8 a.m. EDT

Init: Wed 2020-10-28 12z WPC



Zeta will be moving quick limiting the flash flood risk. 1-2" of rain is currently expected across the Panhandle through Wednesday night, with locally higher amounts of 4-6".

There are no flash flood watches at this time.



Flash Flood Outlook

From the Weather Prediction Center ([LINK](#))



Isolated flash flooding is possible today & tonight in the western Panhandle, especially if rain bands begin training.

Understanding WPC Excessive Rainfall Risk Categories

| No Area/Label | MARGINAL (MRGL) | SLIGHT (SLGT) | MODERATE (MDT) | HIGH (HIGH) |
|--|--|---|---|--|
| Flash floods are generally not expected. | Isolated flash floods possible | Scattered flash floods possible | Numerous flash floods likely | Widespread flash floods expected |
| @NWSWPC | Localized and primarily affecting places that can experience rapid runoff with heavy rainfall. | Mainly localized. Most vulnerable are urban areas, roads, small streams and washes. Isolated significant flash floods possible. | Numerous flash flooding events with significant events possible. Many streams may flood, potentially affecting larger rivers. | Severe, widespread flash flooding. Areas that don't normally experience flash flooding, could. Lives and property in greater danger. |
| Flash flooding near me? | Flash Flooding | Flash Flooding | Flash Flooding | Flash Flooding |
| NO Flash Flooding | | | | |
| WEATHER PREDICTION CENTER | | | | |

Risk of rainfall exceeding flash flood guidance within 25 miles of a point to the right of a line

HIGH: > 50%

SLGT: 10%-20%

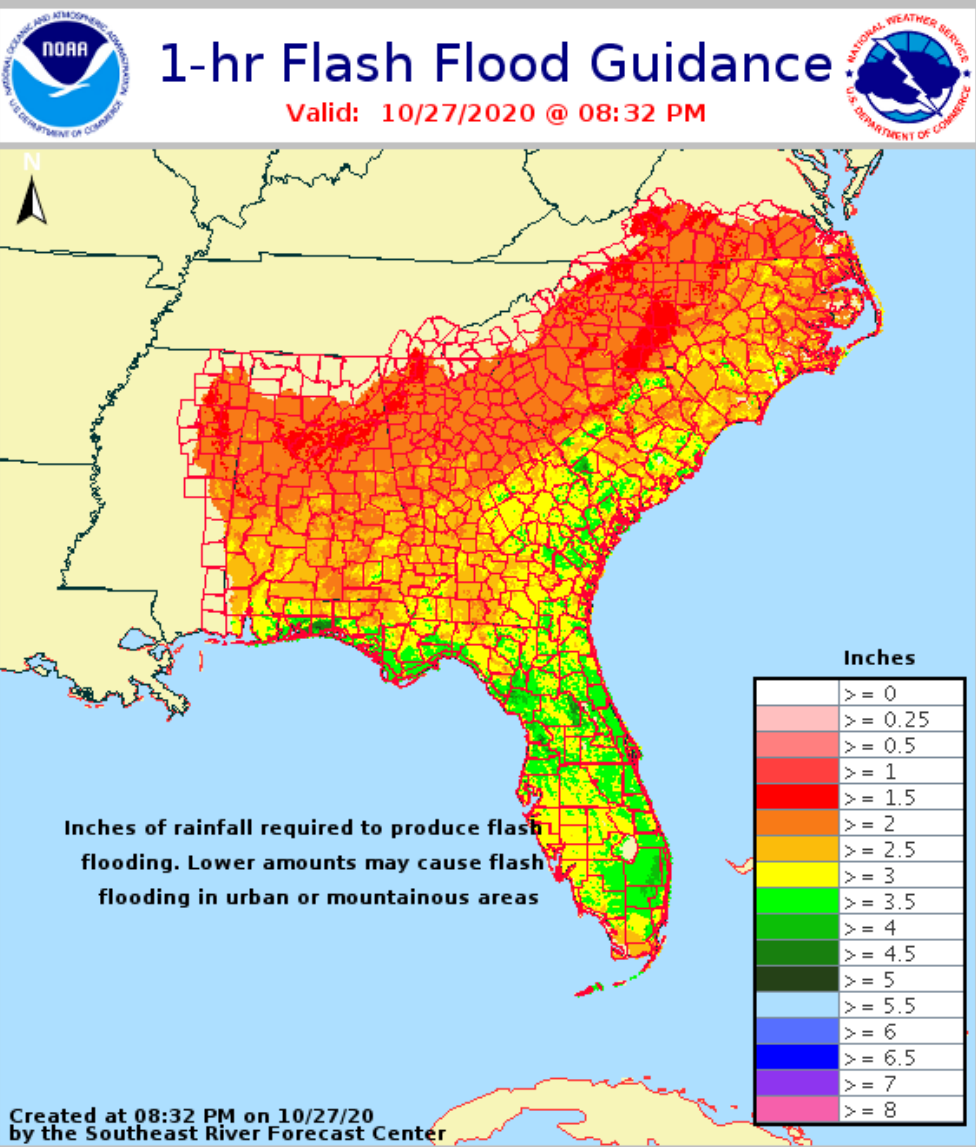
MDT: 20%-50%

MRGL: 5%-10%



Flash Flood Guidance

How Much Rain is Needed to Create Flash Flooding?



With heavy rainfall across the Panhandle and South Florida recently, only 2-3" of rain within 1 hour or about 3-5" within 6 hours is needed to cause flash flooding.

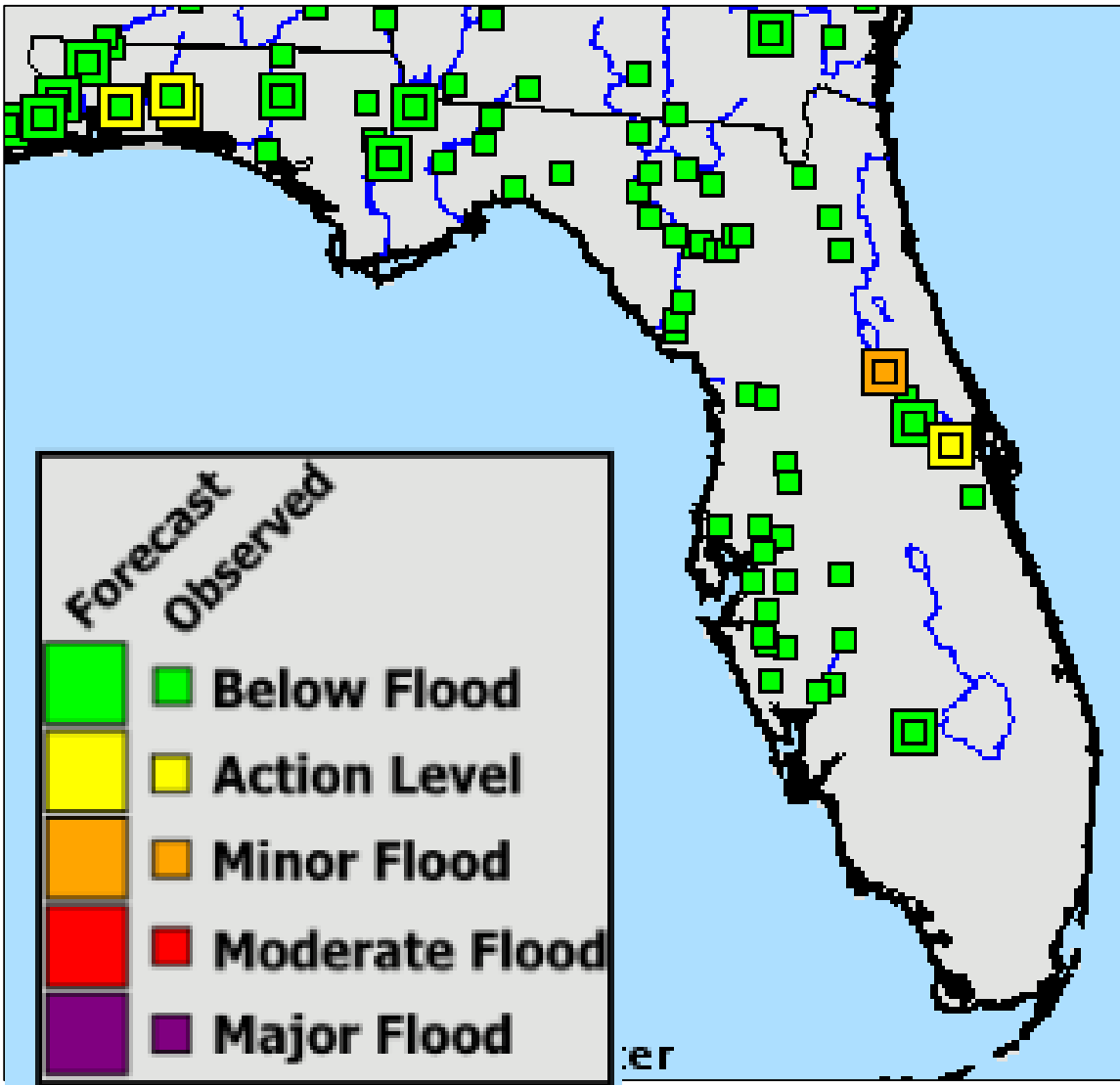
Soils remain super-saturated in these areas, and rainfall will more easily run off, causing flooding concerns in urban areas.

There are no flash flood watches in effect at this time.



River Forecast

Current and Forecast River Levels



Rivers, streams, and creeks continue to run high from recent heavy rainfall.

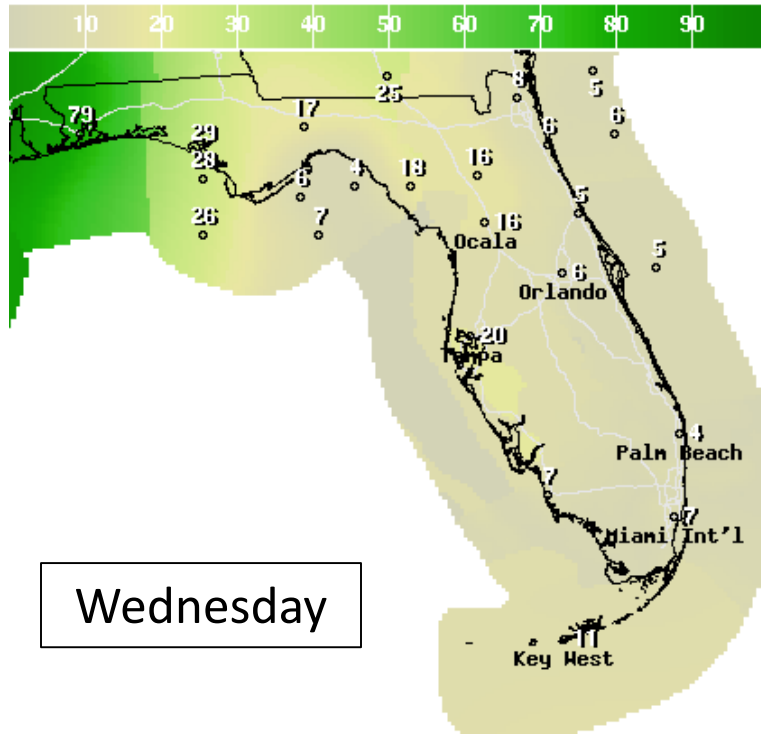
However, Zeta will be quick, limiting the river flood threat.

Rainfall totals over 4" will generally be needed to bring rivers to minor flood stage, but rises to bank-full (Action Stage) are anticipated in the western Panhandle based off of current rainfall forecasts of 1-3".

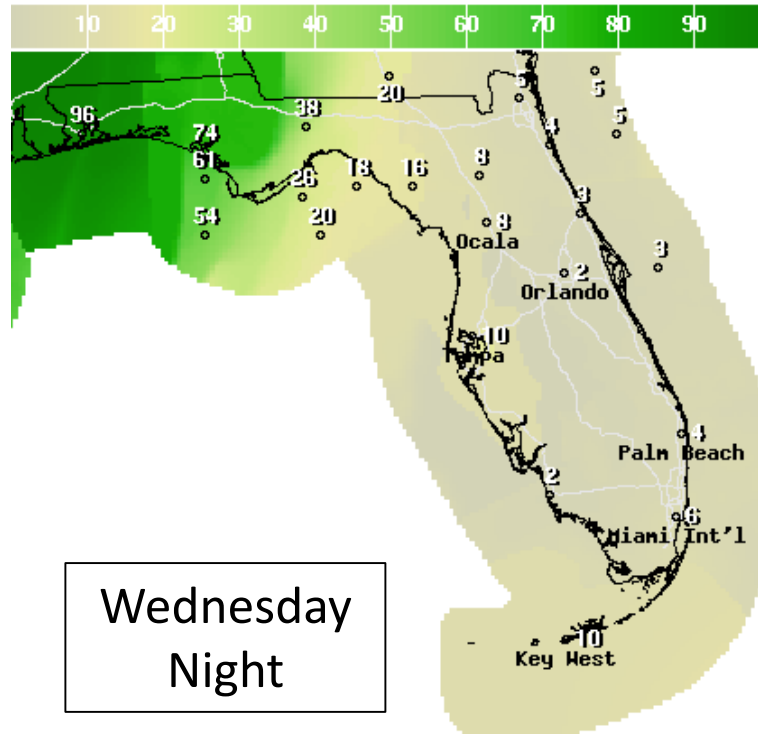


Forecast Rain Chances

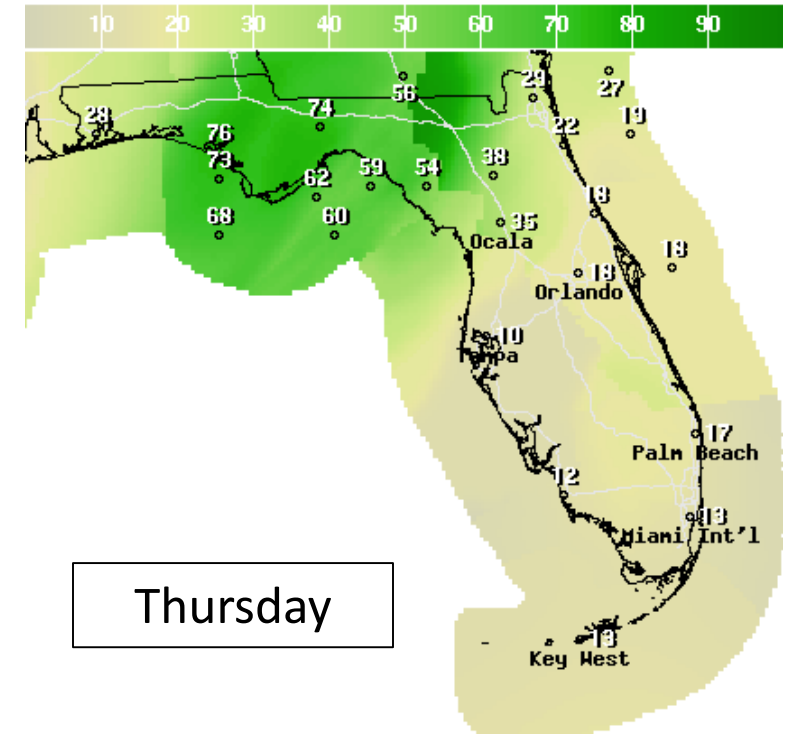
Next 3 Days



12Hr Prob.Precip(%) Ending Wed Oct 28 2020 8PM EDT
(Thu Oct 29 2020 00Z)
National Digital Forecast Database
08z issuance Graphic created-Oct 28 4:44AM EDT



12Hr Prob.Precip(%) Ending Thu Oct 29 2020 8AM EDT
(Thu Oct 29 2020 12Z)
National Digital Forecast Database
08z issuance Graphic created-Oct 28 4:44AM EDT



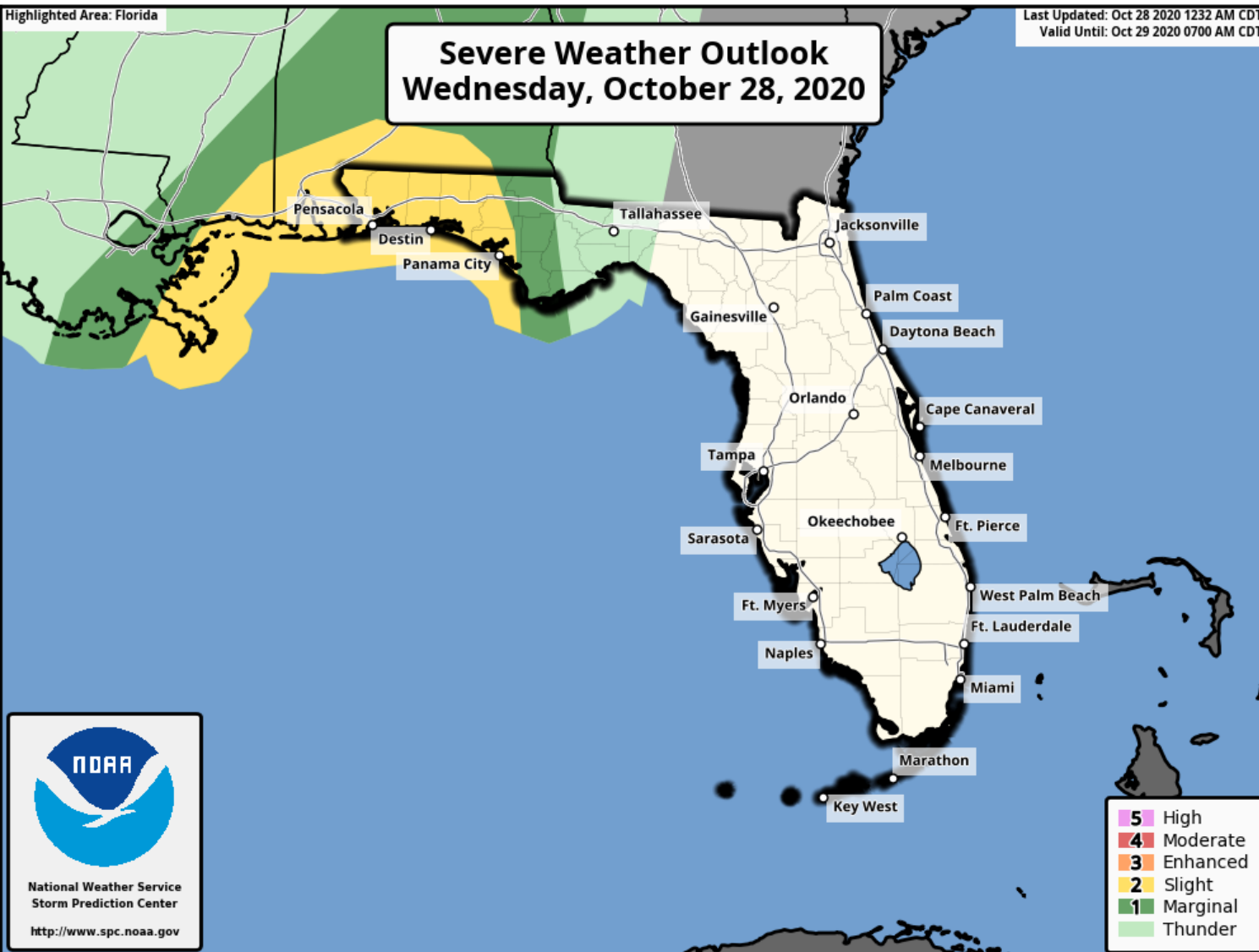
12Hr Prob.Precip(%) Ending Thu Oct 29 2020 8PM EDT
(Fri Oct 30 2020 00Z)
National Digital Forecast Database
08z issuance Graphic created-Oct 28 4:44AM EDT

Central & South Florida dry out after a long stretch of wet weather. Widespread rain chances are forecast for Wednesday and Wednesday night in the western Panhandle as Zeta moves inland, with rain chances continuing on Thursday across North Florida.



Severe Weather Outlook

From the Storm Prediction Center – Today & Tonight



As the outer bands from Zeta move through the Panhandle Wednesday evening and Wednesday night, a few tornadoes are possible. There is a **Slight Risk** (level 2 of 5) of Severe Weather, and Tornado Watches could be issued later this morning or afternoon.

Understanding Severe Thunderstorm Risk Categories

| THUNDERSTORMS (no label) | 1 - MARGINAL (MRGL) | 2 - SLIGHT (SLGT) | 3 - ENHANCED (ENH) | 4 - MODERATE (MDT) | 5 - HIGH (HIGH) |
|--|--|--|--|--|--|
| No severe* thunderstorms expected | Isolated severe thunderstorms possible | Scattered severe storms possible | Numerous severe storms possible | Widespread severe storms likely | Widespread severe storms expected |
| Lightning/flooding threats exist with <u>all</u> thunderstorms | Limited in duration and/or coverage and/or intensity | Short-lived and/or not widespread, isolated intense storms possible | More persistent and/or widespread, a few intense | Long-lived, widespread and intense | Long-lived, very widespread and particularly intense |
| | | | | | |

* NWS defines a severe thunderstorm as measured wind gusts to at least 58 mph, and/or hail to at least one inch in diameter, and/or a tornado. All thunderstorm categories imply lightning and the potential for flooding. Categories are also tied to the probability of a severe weather event within 25 miles of your location.



National Weather Service

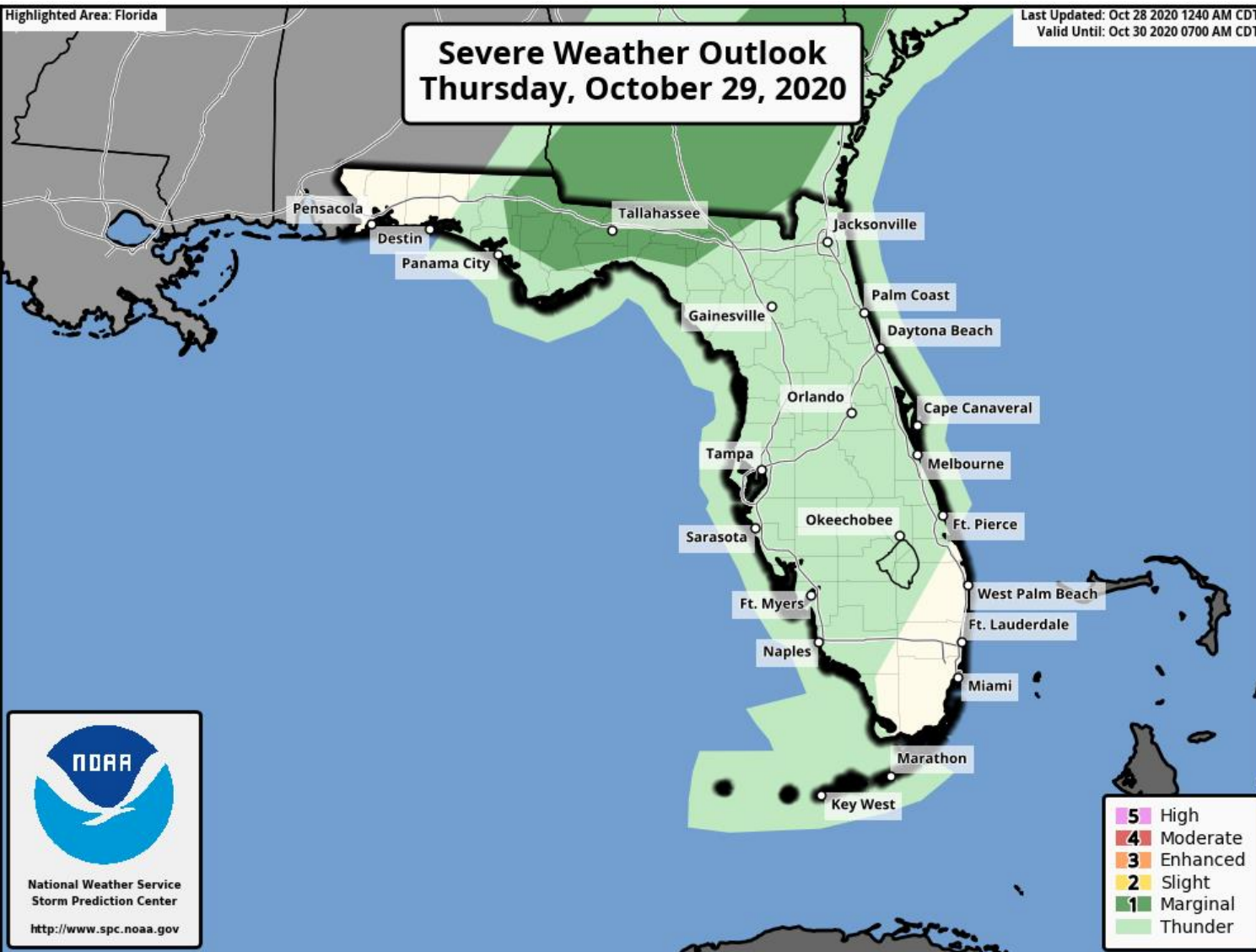
www.spc.noaa.gov





Severe Weather Outlook

From the Storm Prediction Center - Thursday



As the remnant outer bands of Zeta and a weak cold front move through North Florida on Thursday, an isolated tornado or damaging wind gust is possible. There is a **Marginal Risk** (level 1 of 5) of Severe Weather.

Understanding Severe Thunderstorm Risk Categories

| THUNDERSTORMS (no label) | 1 - MARGINAL (MRGL) | 2 - SLIGHT (SLGT) | 3 - ENHANCED (ENH) | 4 - MODERATE (MDT) | 5 - HIGH (HIGH) |
|--|--|--|--|--|--|
| No severe* thunderstorms expected | Isolated severe thunderstorms possible | Scattered severe storms possible | Numerous severe storms possible | Widespread severe storms likely | Widespread severe storms expected |
| Lightning/flooding threats exist with <u>all</u> thunderstorms | Limited in duration and/or coverage and/or intensity | Short-lived and/or not widespread, isolated intense storms possible | More persistent and/or widespread, a few intense | Long-lived, widespread and intense | Long-lived, very widespread and particularly intense |
| | | | | | |

* NWS defines a severe thunderstorm as measured wind gusts to at least 58 mph, and/or hail to at least one inch in diameter, and/or a tornado. All thunderstorm categories imply lightning and the potential for flooding. Categories are also tied to the probability of a severe weather event within 25 miles of your location.



National Weather Service

www.spc.noaa.gov





Florida Outlook

Florida Outlook:

- Zeta has re-organized and re-strengthened overnight into a Category 1 Hurricane.
- Further strengthening is possible, and Zeta is now forecast to make landfall in Louisiana as a Category 2 Hurricane.
- Zeta will be moving quickly to the northeast on Wednesday night at the time of landfall, with the center likely making its closest approach to Florida as it tracks across southern Alabama overnight.
- ***However, impacts will occur well away from the center, particularly to the east of landfall as Zeta is likely to be lopsided.***
- Tropical Storm Warnings are in effect for Escambia, Santa Rosa, Okaloosa, Walton, and Holmes.
- If tropical storm force winds were to occur, it would most likely be tonight into early Thursday.
- Storm Surge Warnings are in effect from the Alabama/Florida border to Navarre Beach, including Pensacola Bay.
- Storm surge of 2-4' is forecast for the western Panhandle and 1-3' eastward towards Cedar Key on Wednesday.
- Dangerous rip currents and beach erosion are expected with wave heights 8-15' along the western Panhandle.
- Heavy rainfall is possible across the Panhandle through Thursday. 1-2" of rain is likely, but locally higher amounts of 4-6" are possible. Flash flooding and minor river flooding are possible with the higher totals.
- A few tornadoes are possible in outer bands across the Panhandle, possibly beginning this afternoon and continuing into tonight. There is currently a Slight Risk (Level 2 of 5) of severe weather. Tornado watches may be issued later this morning or afternoon.

The next briefing packet will be issued at 11 AM ET/10 AM CT. For the latest information on the tropics, please visit the National Hurricane Center website at www.hurricanes.gov.



TROPICAL UPDATE



Created by:

Cameron Young, Assistant State Meteorologist

Cameron.Young@em.myflorida.com

State Meteorological Support Unit

Florida Division of Emergency Management

Users wishing to subscribe (approval pending) to this distribution list, register at:

https://public.govdelivery.com/accounts/FLDEM/subscriber/new?topic_id=SERT_Met_Tropics.

Other reports available for subscription are available at:

<https://public.govdelivery.com/accounts/FLDEM/subscriber/new?preferences=true>