



# TROPICAL UPDATE



8:00 AM EDT

Saturday, October 10, 2020

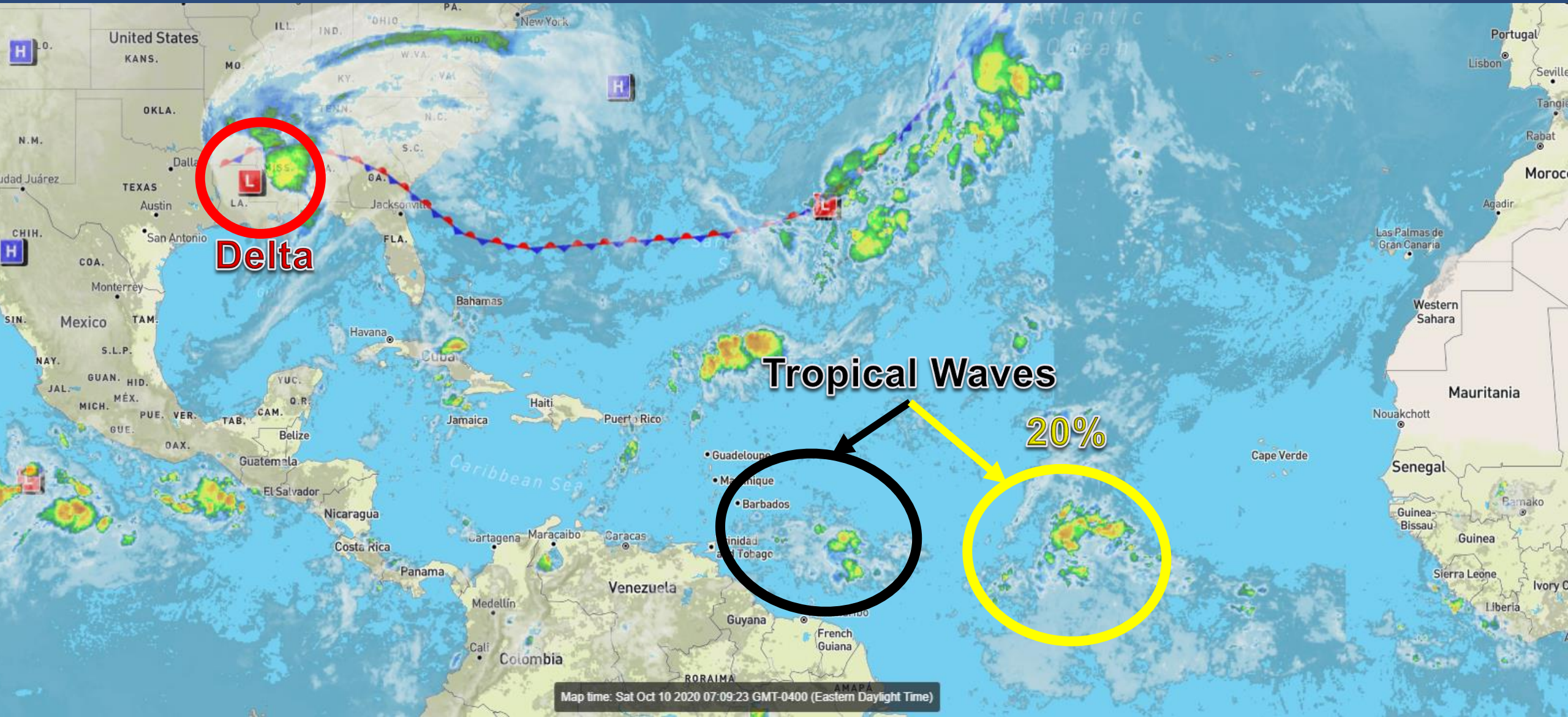
Tropical Storm Delta & Tropical Atlantic Wave (20%)

This update is intended for government and emergency response officials, and is provided for informational and situational awareness purposes only. Forecast conditions are subject to change based on a variety of environmental factors. For additional information, or for any life safety concerns with an active weather event please contact your County Emergency Management or Public Safety Office, local National Weather Service forecast office, or visit the National Hurricane Center website at [www.hurricanes.gov](http://www.hurricanes.gov).



# Atlantic Basin Satellite Image

Chance of development: — None — Low — Medium — High





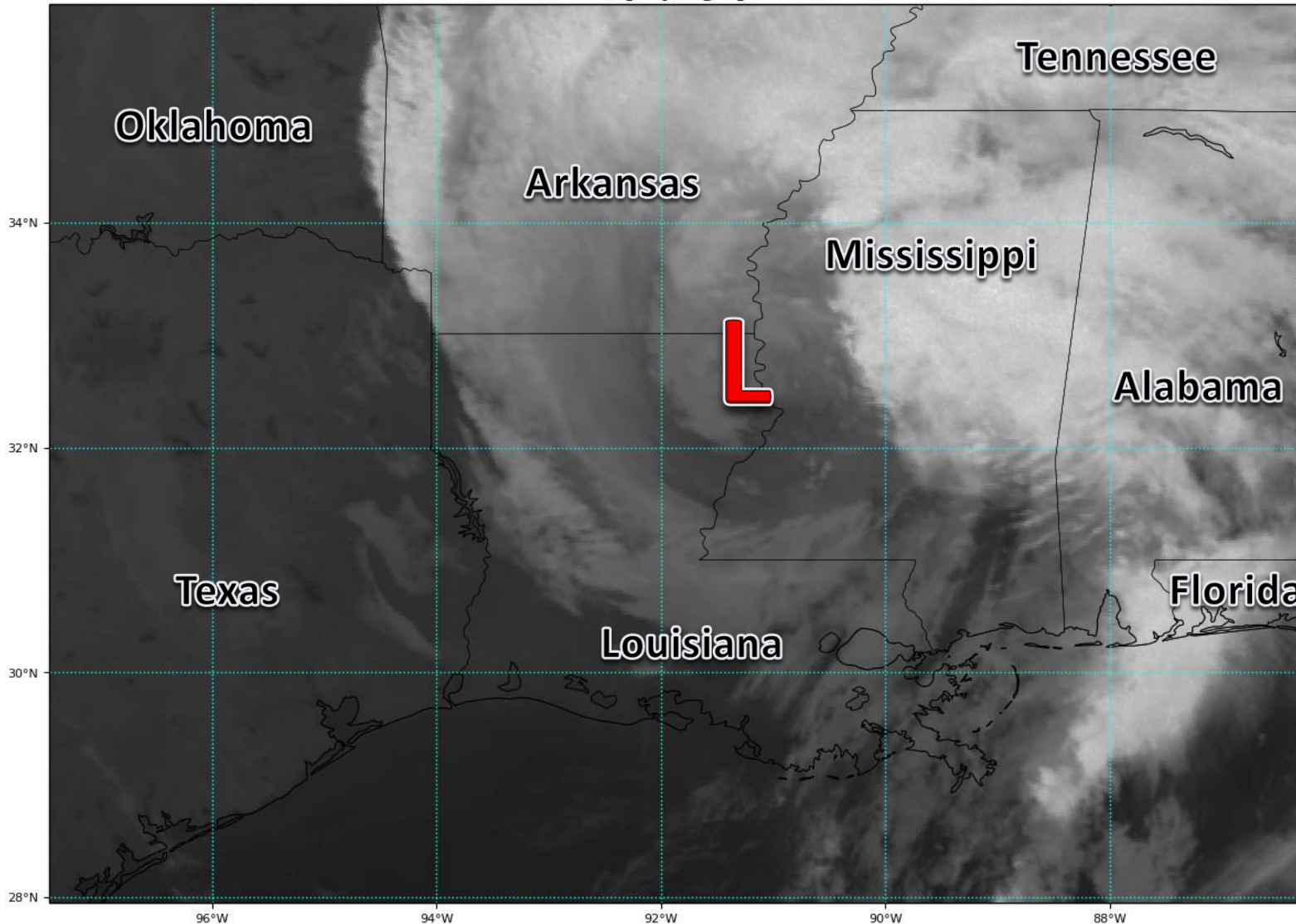


# Satellite Imagery

## Tropical Storm Delta – Southeast U.S.

GOES-16 Channel 2 (visible) / Channel 7 (shortwave IR) [Day/Night] at 11:02Z Oct 10, 2020

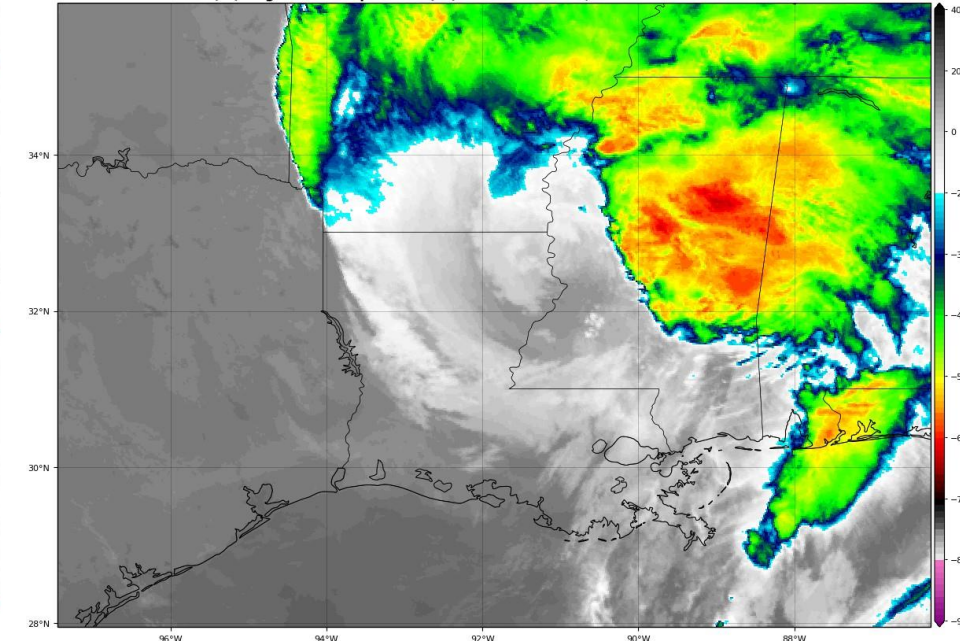
TROPICALTIDBITS.COM



Delta made landfall last night near Creole Louisiana (blue dot) and has weakened significantly. Shear and dry air are pushing most of the showers and storms well off to the east of the center.

GOES-16 Channel 13 (IR) Brightness Temperature (°C) at 11:07Z Oct 10, 2020

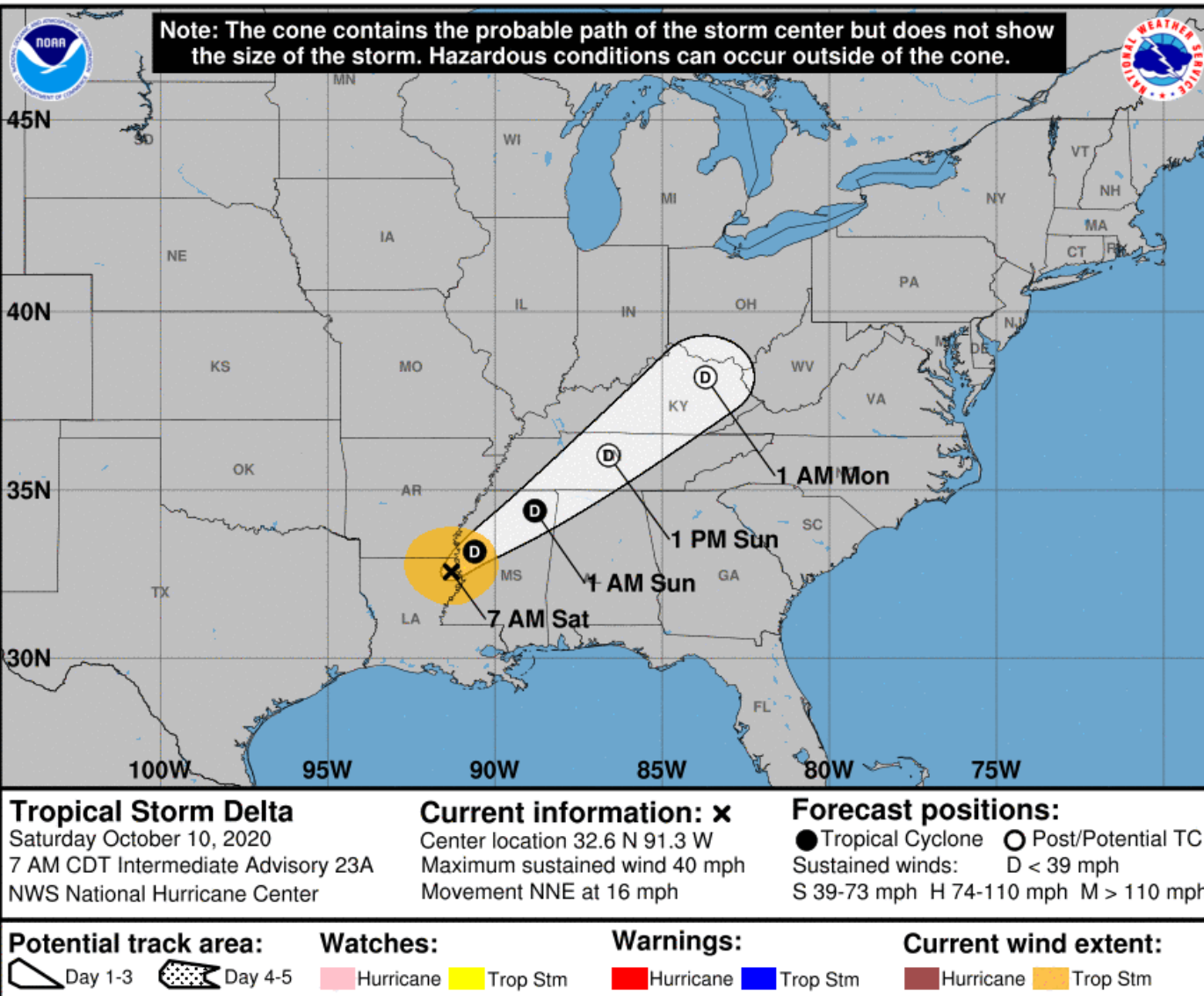
TROPICALTIDBITS.COM





# Official Forecast Track

From the National Hurricane Center –Hurricane Delta



- Tropical Storm Delta is now located about 45 miles east of Monroe, LA, moving north-northeast at 16 mph.
- Maximum sustained winds are near 40 mph, and additional weakening is expected.
- Isolated tornadoes, localized torrential downpours, gusty winds, minor coastal flooding, and rough surf all remain possible in the Florida Panhandle.



# Current Florida Radar

As of 7:15 AM ET



The primary outer band will move across the Florida Panhandle through this afternoon. Isolated tornadoes, gusts to tropical-storm-force, and torrential downpours are possible.

Showers developing ahead of the primary band also have the potential to produce isolated tornadoes.





# Tornado Watch

In Effect Until 2 PM ET/1 PM CT



**Counties:** Escambia, Santa Rosa, Okaloosa

Additional watches may be needed farther east in the Panhandle later this morning.

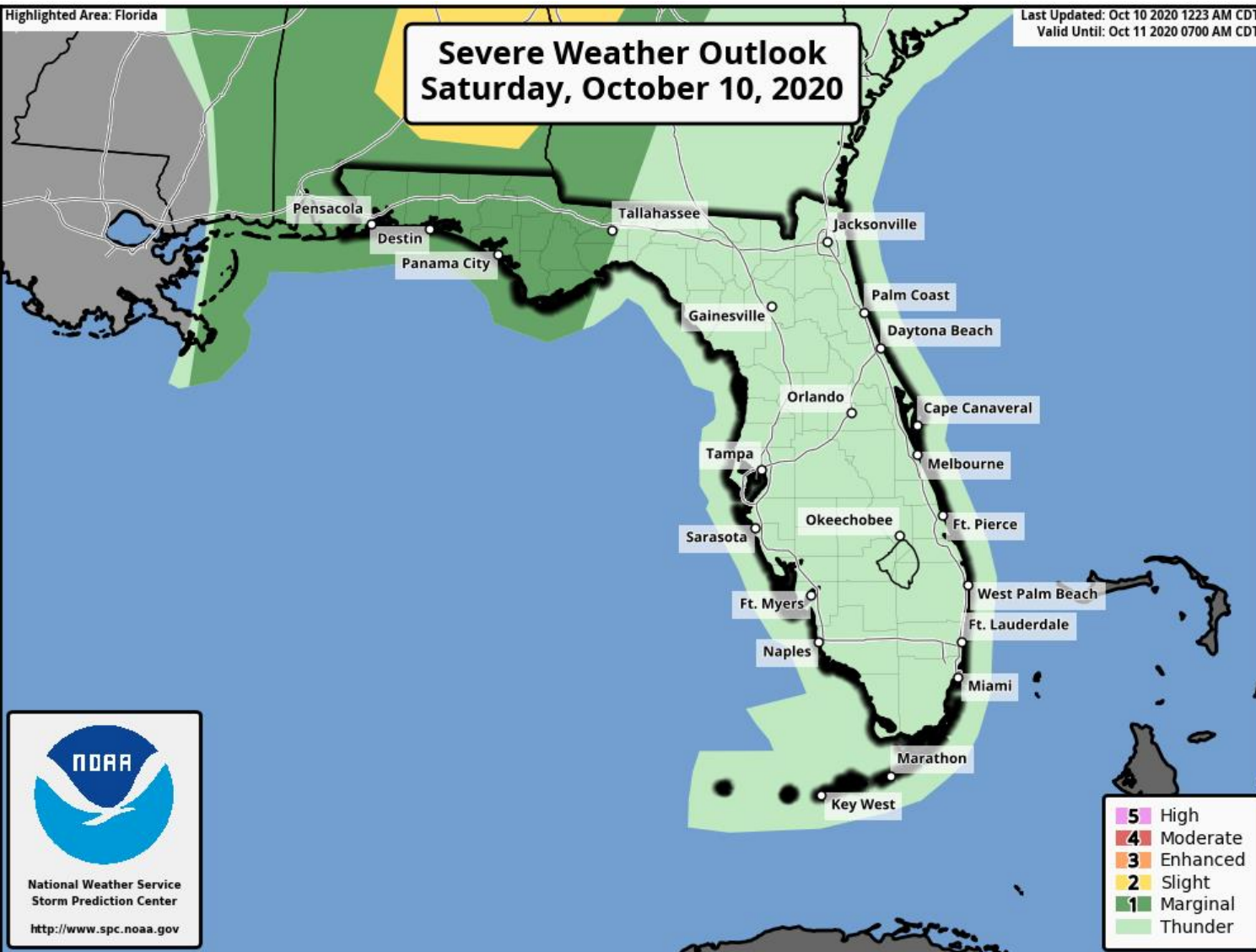


**Tornado Watch # 497 - Valid from 350 AM until 100 PM CDT**



# Severe Weather Outlook for Saturday

From the Storm Prediction Center



As Delta moves into northern Mississippi today, the primary outer band and any showers ahead of the band will be capable of producing isolated tornado and wind gusts to tropical-storm-force.

A **Marginal Risk of severe weather** (level 1 of 5) is outlined for the entire Panhandle from Tallahassee westward.



# Severe Thunderstorm Risk Categories

## Understanding the Storm Prediction Center Risk Scale

### Understanding Severe Thunderstorm Risk Categories

THUNDERSTORMS (no label)	1 - MARGINAL (MRGL)	2 - SLIGHT (SLGT)	3 - ENHANCED (ENH)	4 - MODERATE (MDT)	5 - HIGH (HIGH)
No severe* thunderstorms expected	Isolated severe thunderstorms possible	Scattered severe storms possible	Numerous severe storms possible	Widespread severe storms likely	Widespread severe storms expected
Lightning/flooding threats exist with <u>all</u> thunderstorms	Limited in duration and/or coverage and/or intensity	Short-lived and/or not widespread, isolated intense storms possible	More persistent and/or widespread, a few intense	Long-lived, widespread and intense	Long-lived, very widespread and particularly intense
					

\* NWS defines a severe thunderstorm as measured wind gusts to at least 58 mph, and/or hail to at least one inch in diameter, and/or a tornado. All thunderstorm categories imply lightning and the potential for flooding. Categories are also tied to the probability of a severe weather event within 25 miles of your location.



National Weather Service

[www.spc.noaa.gov](http://www.spc.noaa.gov)



**Thunderstorms  
(no label)** No severe\* thunderstorms expected  
Lightning/flooding threat exists with all thunderstorms  
Winds to 40 mph and small hail possible



**1 Marginal Risk  
(MRGL)** *Isolated severe thunderstorms possible*  
Limited in duration and/or coverage and/or intensity  
Wind to 40-60 mph, hail up to 1", and low tornado risk



**2 Slight Risk  
(SLGT)** *Scattered severe storms possible*  
Short-lived and/or not widespread, isolated  
intense storms  
One or two tornadoes  
Reports of strong winds and wind damage  
Hail ~1", isolated 2"



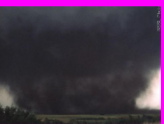
**3 Enhanced Risk  
(ENH)** *Numerous severe storms possible*  
More persistent and/or widespread, a few intense  
A few tornadoes  
Several wind damage reports  
Damaging hail, 1"-2"



**4 Moderate Risk  
(MDT)** *Widespread severe storms likely*  
Long-lived, widespread and intense  
Strong tornadoes  
Widespread wind damage  
Destructive hail, 2" or greater



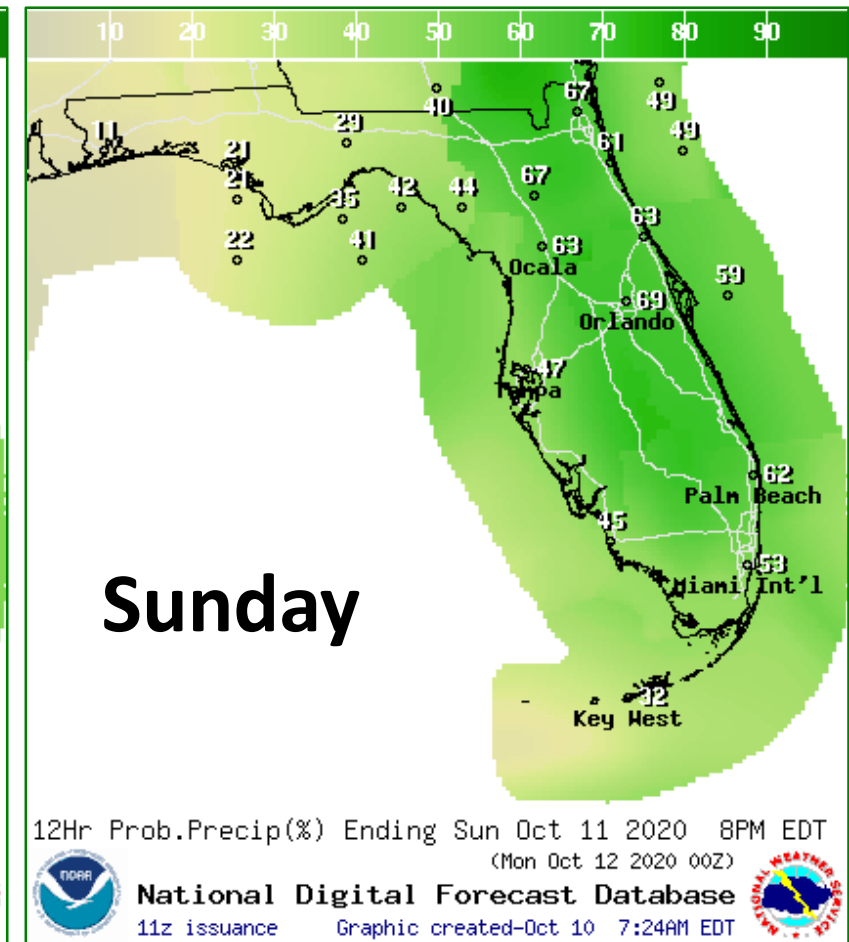
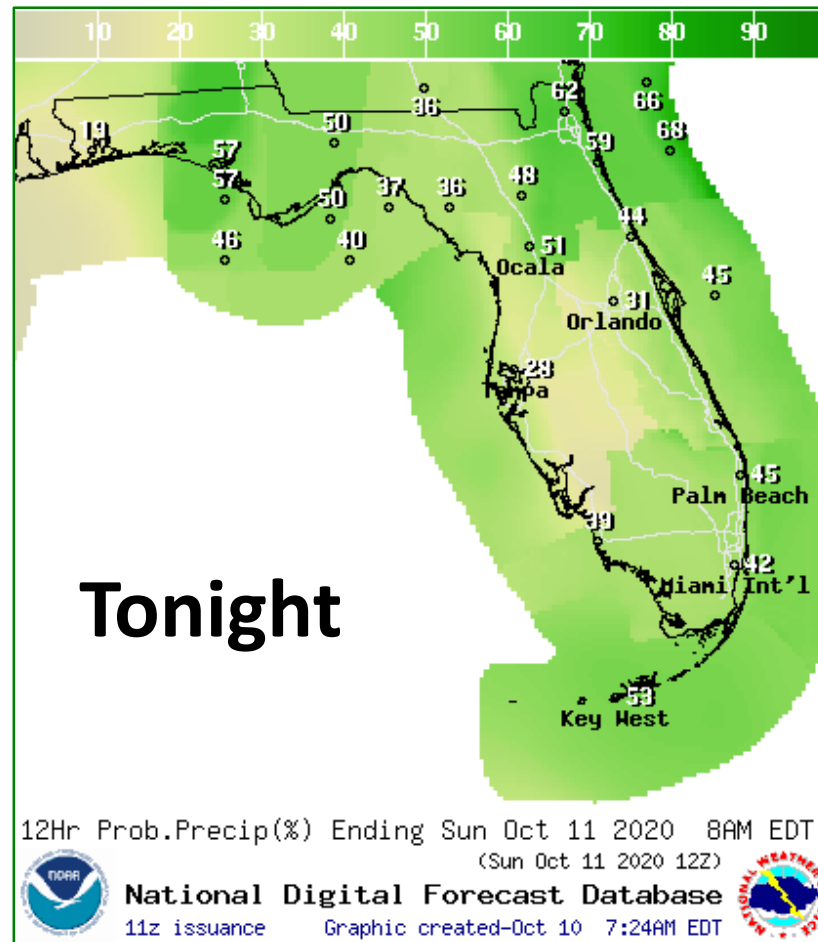
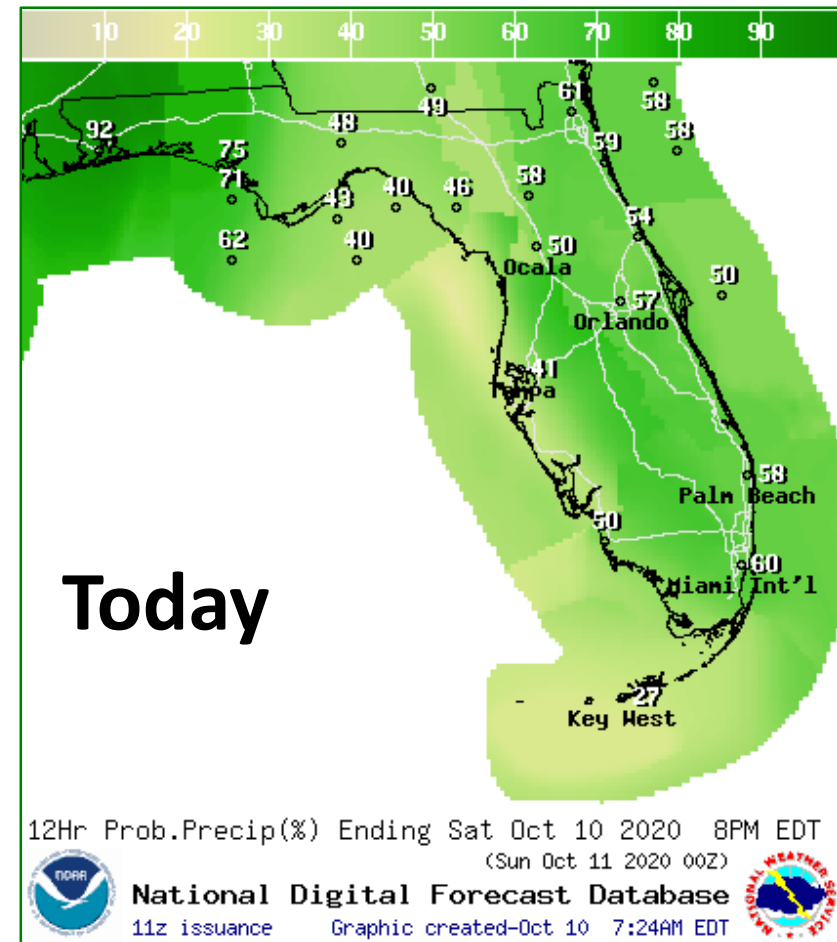
**5 High Risk  
(HIGH)** *Widespread severe storms expected*  
Long-lived, very widespread and particularly intense  
Tornado outbreak  
Derecho







# Rain Chances Next 36 Hours

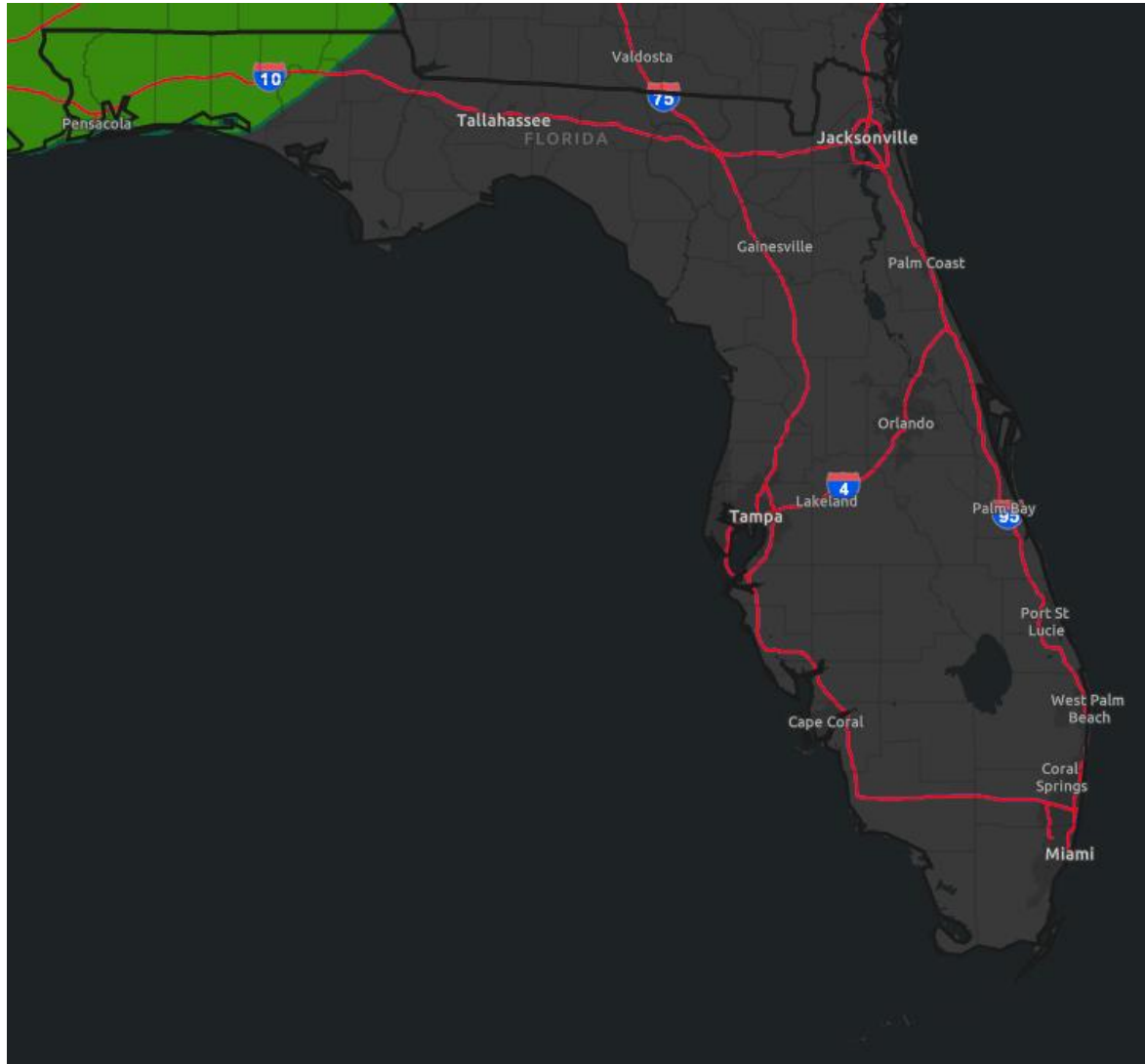


**The primary outer band will move from west to east across the Panhandle and Big Bend through tonight. Scattered storms in Northeast Florida & Peninsula.**









# Flash Flood Outlook for Today

From the Weather Prediction Center ([LINK](#))



- Torrential downpours are possible today in association with Tropical Storm Delta. Isolated flash flooding is possible if storms begin to train.

## Understanding WPC Excessive Rainfall Risk Categories

No Area/Label	MARGINAL (MRGL)	SLIGHT (SLGT)	MODERATE (MDT)	HIGH (HIGH)
Flash floods are generally not expected.	Isolated flash floods possible	Scattered flash floods possible	Numerous flash floods likely	Widespread flash floods expected
Localized and primarily affecting places that can experience rapid runoff with heavy rainfall.	Mainly localized. Most vulnerable are urban areas, roads, small streams and washes. Isolated significant flash floods possible.	Numerous flash flooding events with significant events possible. Many streams may flood, potentially affecting larger rivers.	Severe, widespread flash flooding. Areas that don't normally experience flash flooding, could. Lives and property in greater danger.	
<a href="http://www.wpc.ncep.noaa.gov">@NWSWPC</a>				
Flash flooding near me?	Flash Flooding			
NO Flash Flooding				
  WEATHER PREDICTION CENTER				

Risk of rainfall exceeding flash flood guidance within 25 miles of a point to the right of a line

**HIGH: > 50%**

**SLGT: 10%-20%**

**MDT: 20%-50%**

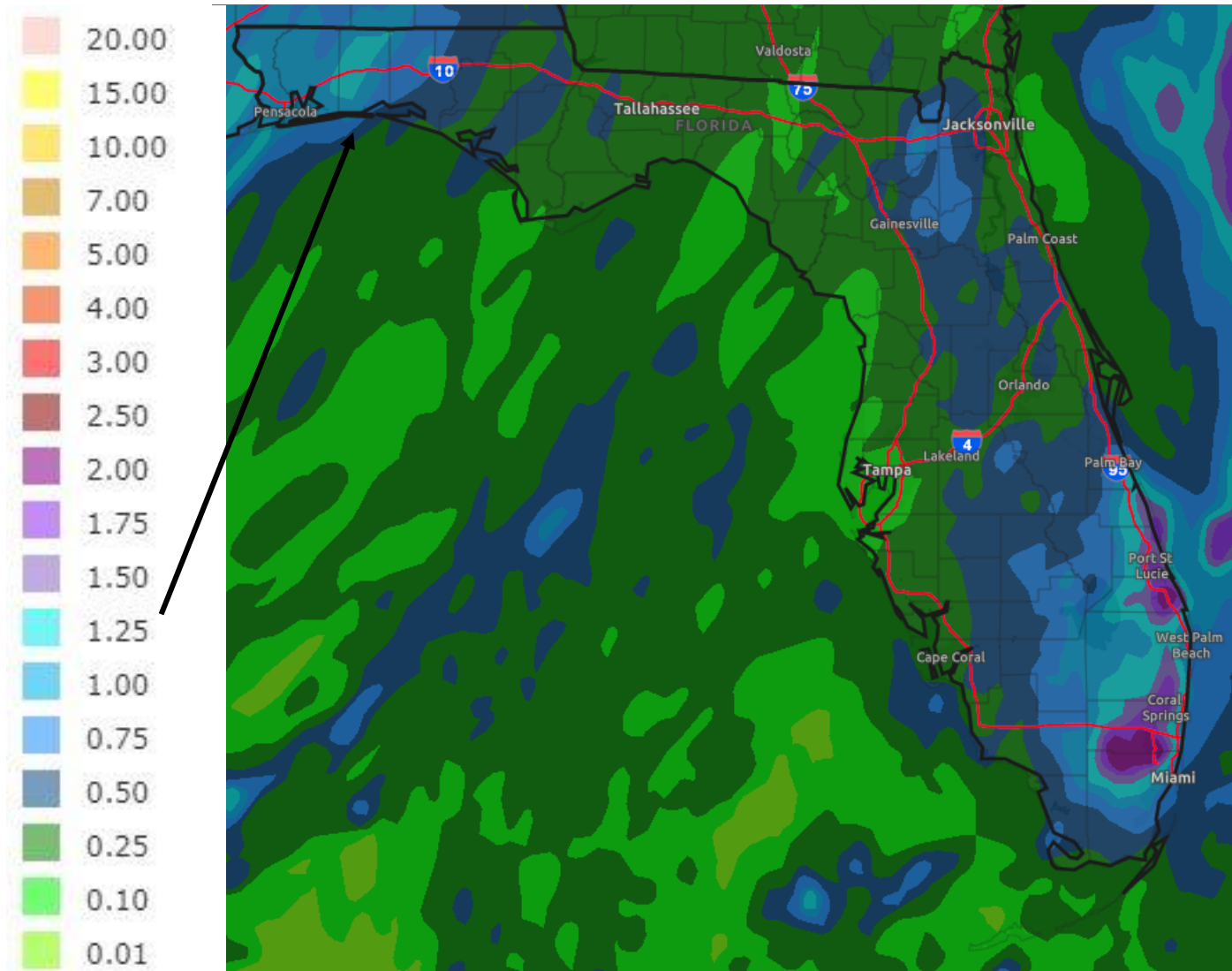
**MRGL: 5%-10%**





# Rainfall Totals Next 3 Days

**\*Locally Higher Totals\***



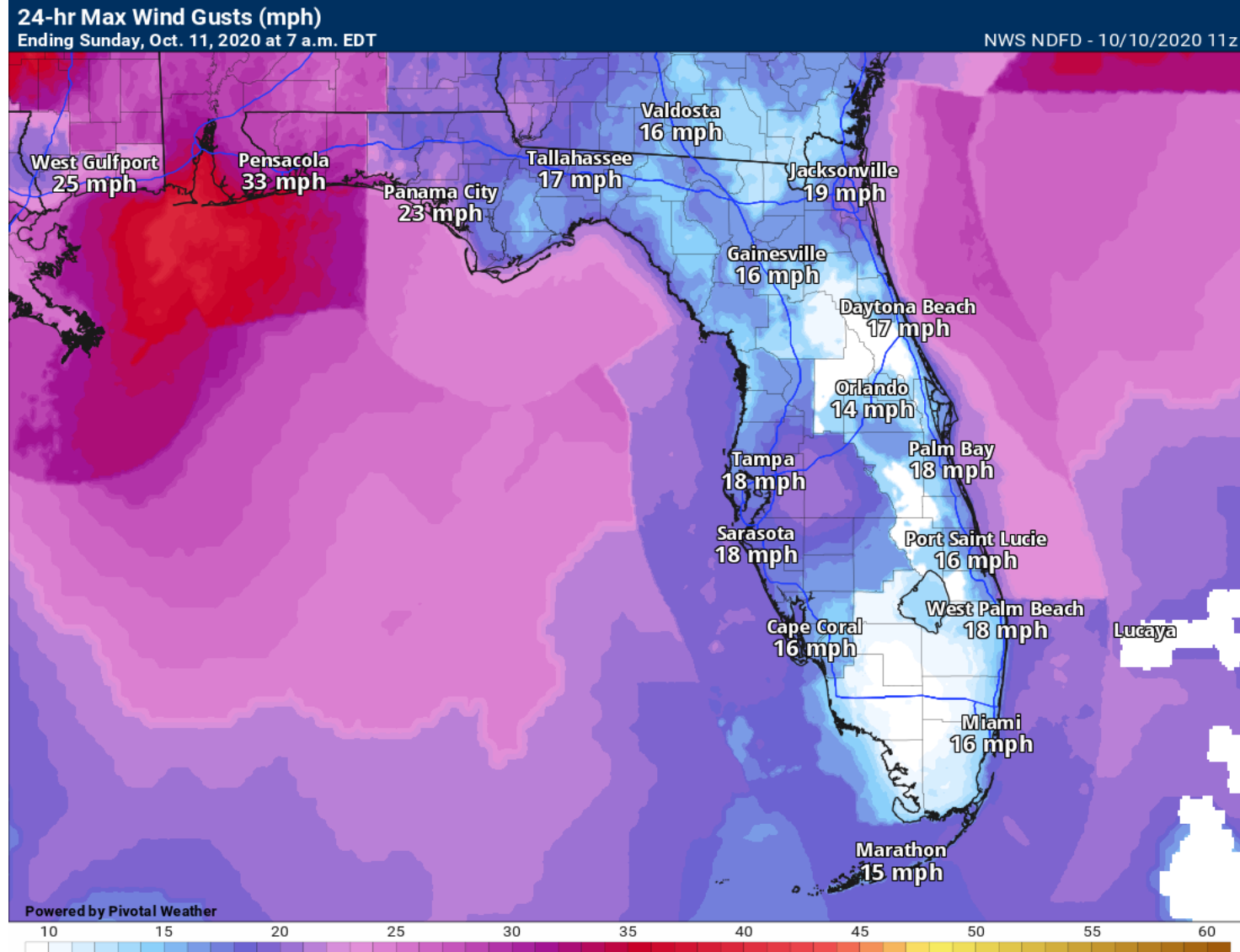
- Heavy rainfall is possible today in the western Florida Panhandle as Delta moves across Mississippi and Alabama (1-2"). Locally higher amounts possible
- Locally heavy rainfall in the Peninsula each afternoon, especially in Southeast Florida. An isolated flash-flood threat is certainly possible given saturated soils.



# Maximum Wind Gusts

## Next 24 Hours

Wind gusts of 25-35 mph (outside of rain bands) will be possible over the Panhandle today, especially near the coast and farther west.

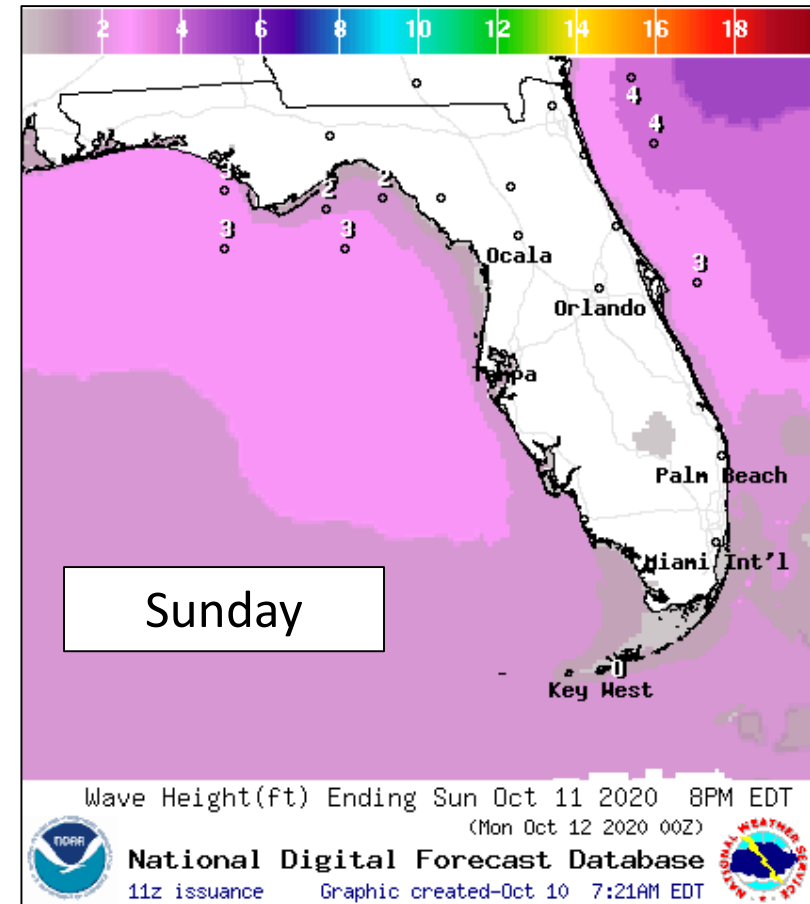
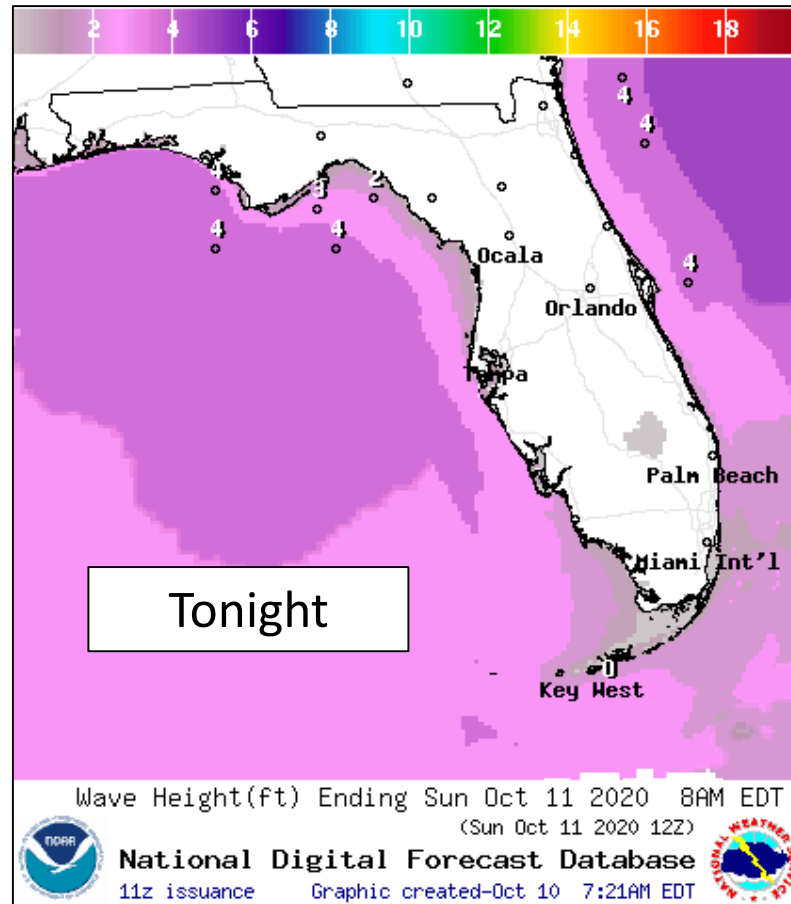
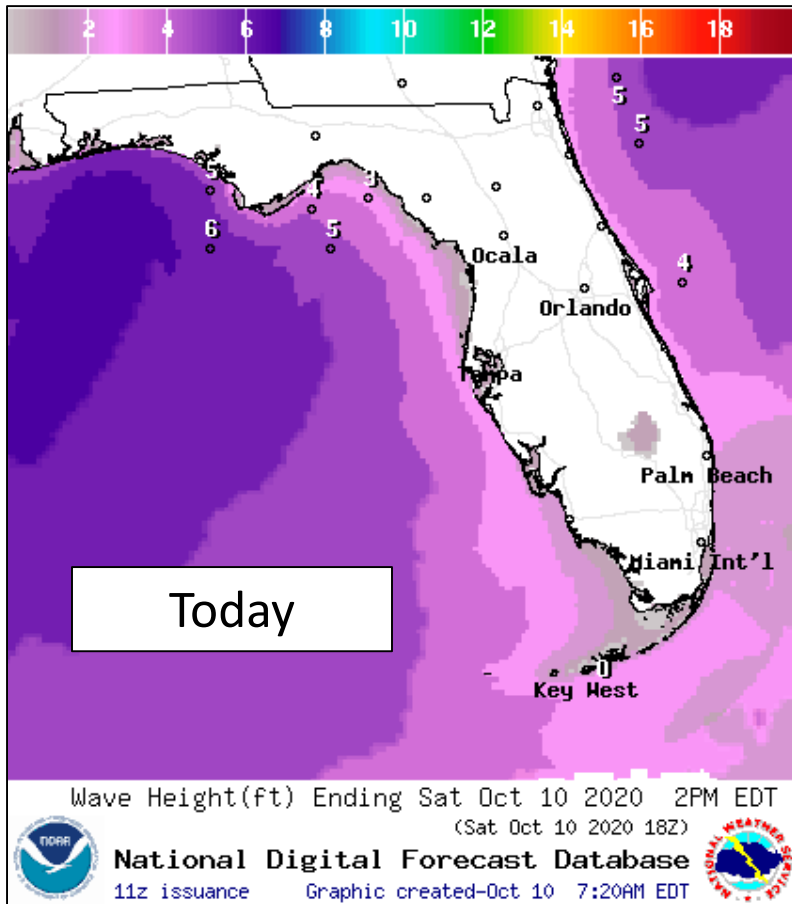






# Forecast Wave Heights

## This Weekend – Tropical Storm Delta



Waves around 5-6' will be possible today along the Panhandle coast and 2-4' elsewhere. High surf will create beach erosion and minor coastal flooding, particularly in locations that experienced significant beach/dune damage from Hurricane Sally a few weeks ago. Swells will also impact the West Coast this weekend.



# BEACH FLAG WARNING SYSTEM



A map of Florida with major cities labeled: Pensacola, Tallahassee, Valdosta, Jacksonville, Gainesville, Palm Coast, Orlando, Melbourne, Palm Bay, St. Petersburg, Tampa, Lakeland, Port St. Lucie, West Palm Beach, Boca Raton, Coral Springs, Cape Coral, and Miami. The Gulf of Mexico is labeled to the west. A thick red line highlights a coastal route starting from the Panhandle, passing through St. Petersburg, Tampa, and Cape Coral, then following the southern coast through Miami. A yellow line highlights a route along the northern coast from Jacksonville down to the central part of the state, and another yellow line segment on the southern coast near Cape Coral. A green line highlights a route along the eastern coast from Jacksonville down to Miami.



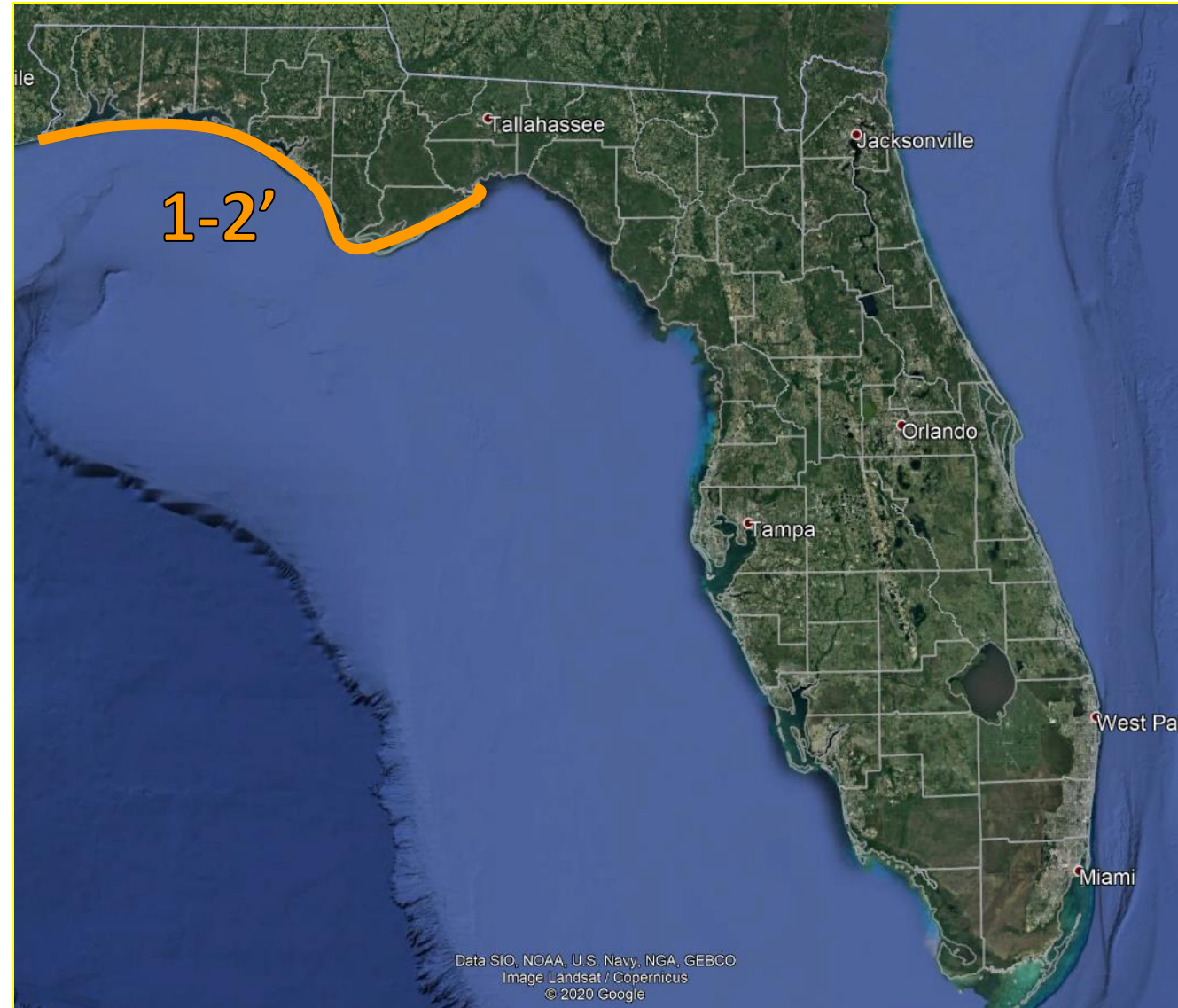


# Storm Surge/Coastal Flooding

## This Weekend

South to southeast winds and swells from Hurricane Delta will result in elevated tides along the Panhandle and western Big Bend coast. Tides this morning have been around 1-2' above normal.

Tides should begin decreasing Sunday morning, but nuisance coastal flooding still cannot be ruled out.

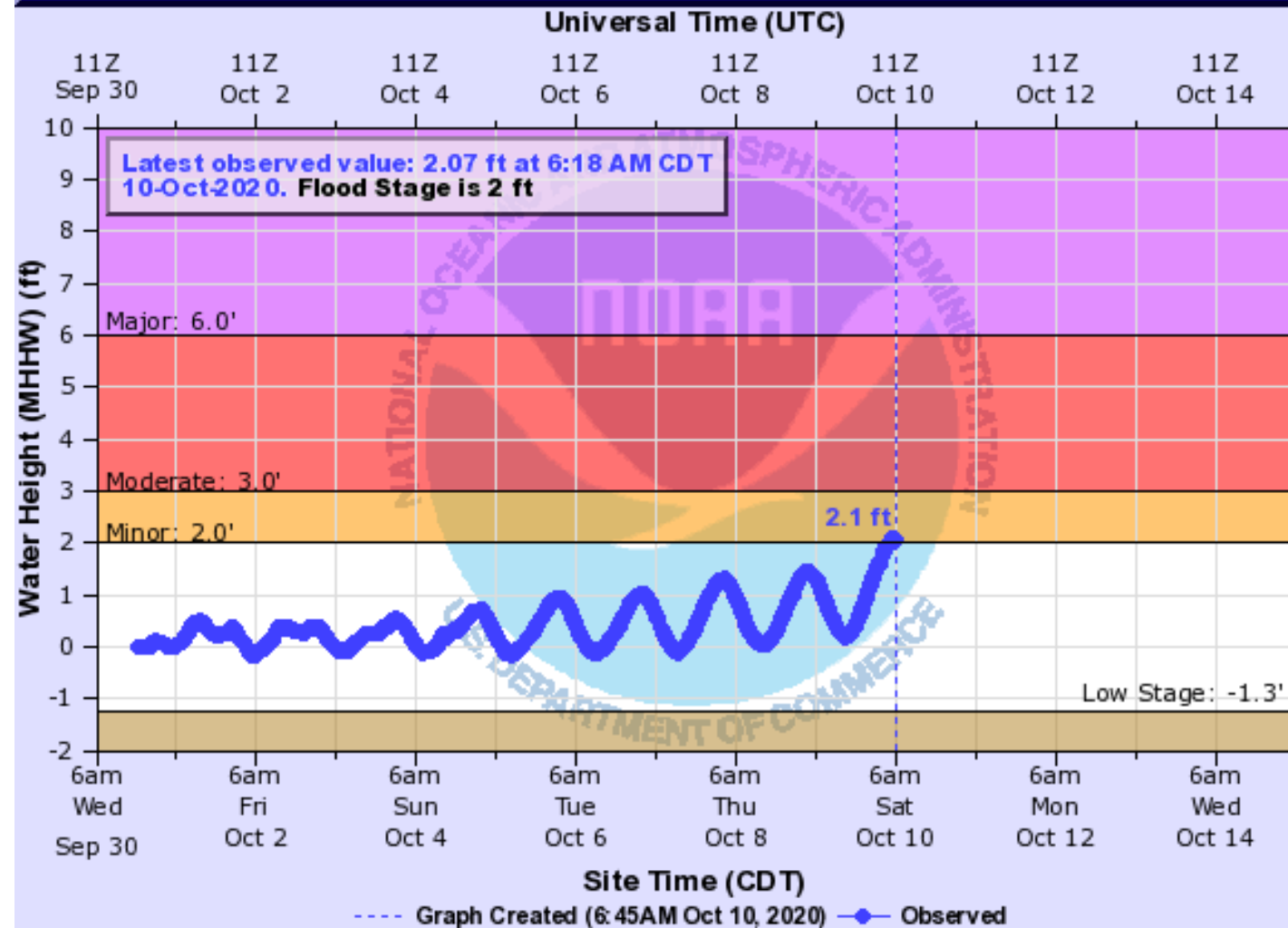




# Gulf of Mexico at Pensacola

[Hydrograph Link](#)

## GULF OF MEXICO TIDE GAUGE NEAR PENSACOLA (IN MHHW)

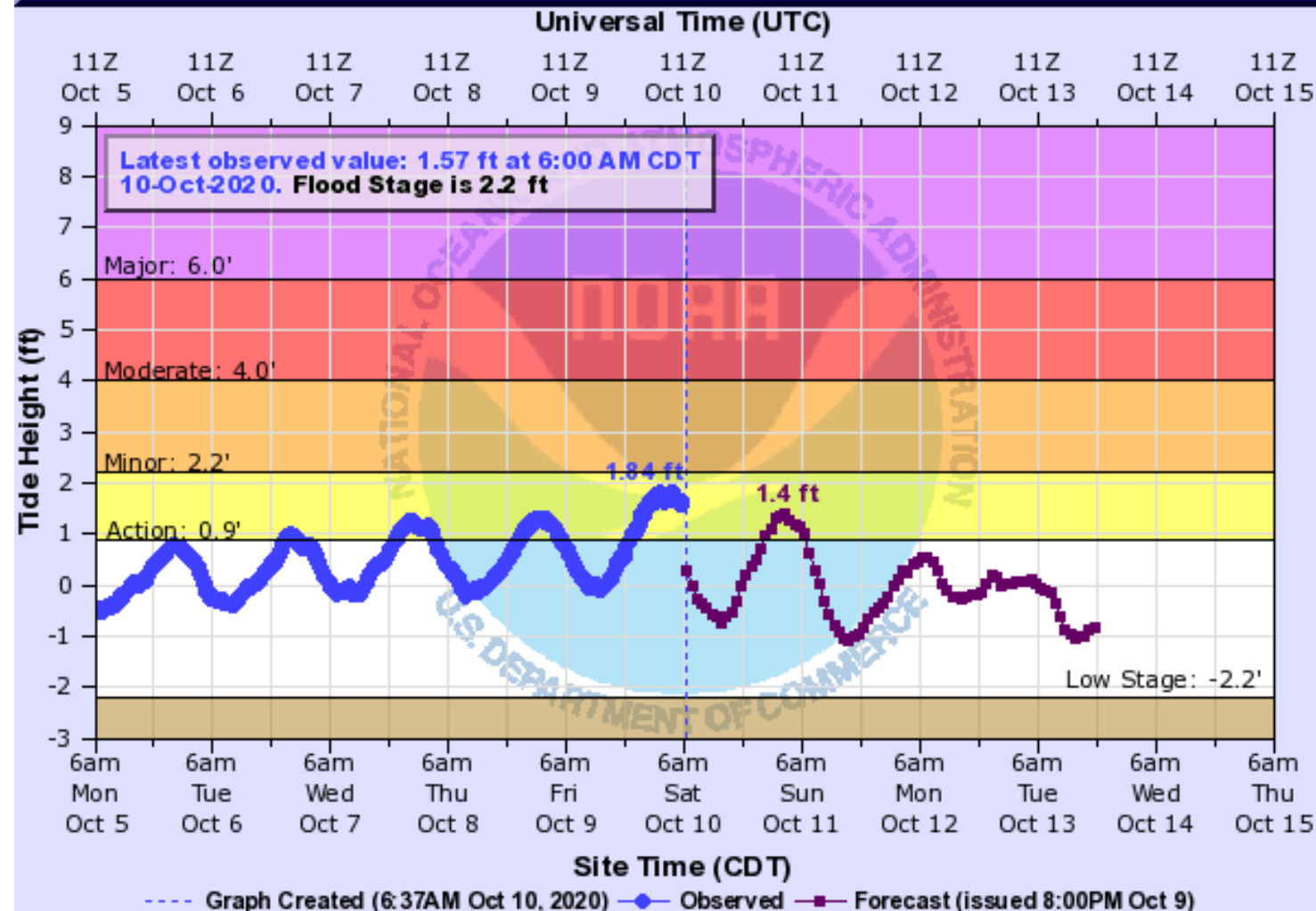




# Gulf of Mexico at Panama City Beach

[Hydrograph Link](#)

## GULF OF MEXICO TIDE GAUGE AT PANAMA CITY BEACH (IN MHHW)



3 Water begins to flood low lying areas in Camp Helen State Park and on south facing portions of Powell Lake in Bay County. Areas near beach access continue to flood. Erosion from wave action begins along the Bay County Beaches.

2.2 Where breaks in the dune line to beach access exist, water begins to flood access areas from Inlet Beach to St Andrews State Park in Panama City Beach.

1.7 Water reaches the dune line in several places along the Bay County Beaches.

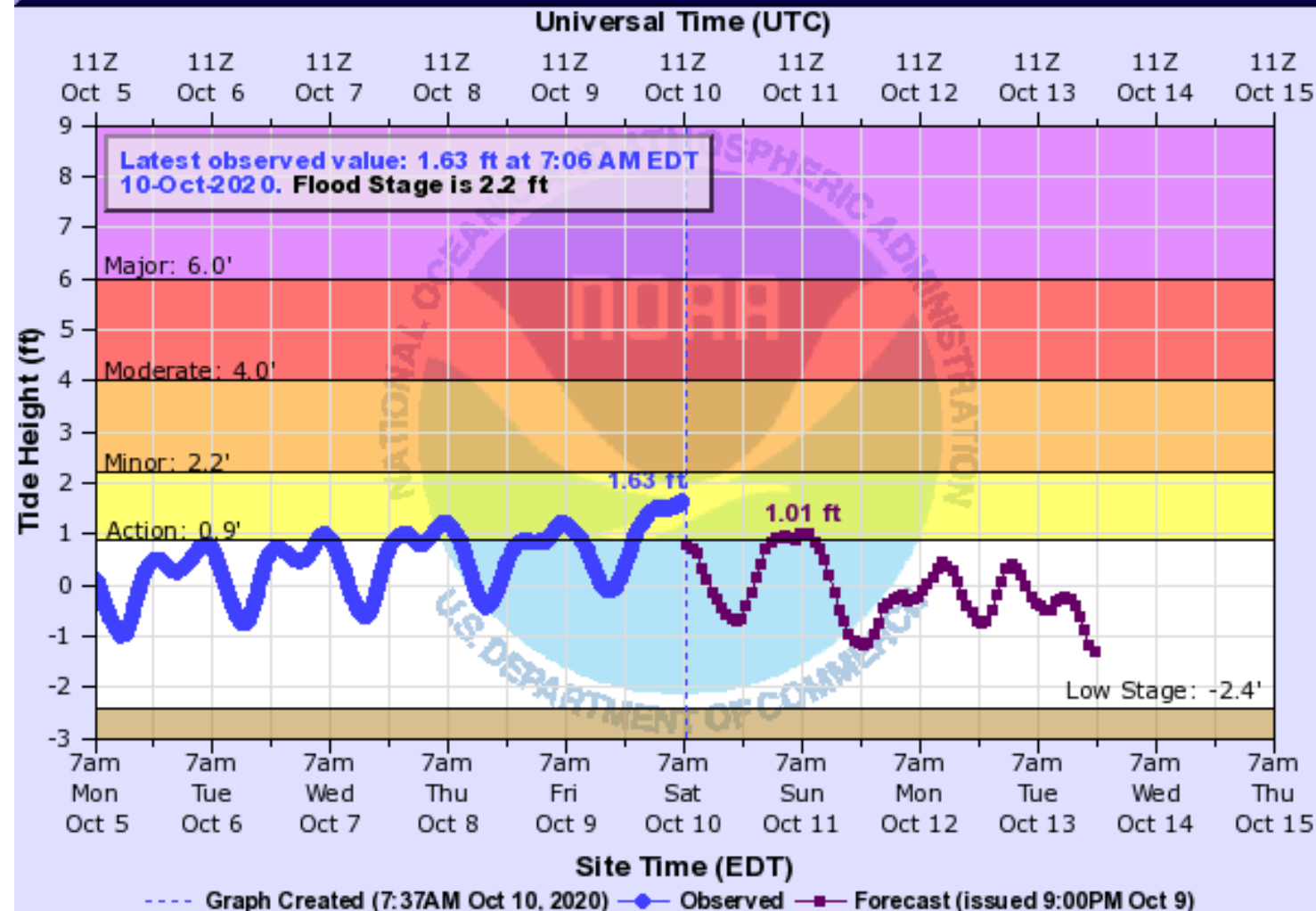




# Gulf of Mexico at Apalachicola

[Hydrograph Link](#)

## GULF OF MEXICO TIDE GAUGE AT APALACHICOLA (IN MHHW)



2.2 In Gulf County, water will overwash SR-30E at the Stump Hole. Backyards of residences on the north side of Indian Pass Lagoon will begin to flood. Water approaches Indian Pass Road on the west side of the Lagoon.

1.9 The boat ramp at the city docks in Apalachicola will flood.



# Tropical Weather Outlook

Possible Area of Development During the Next 5 Days ([LINK](#))



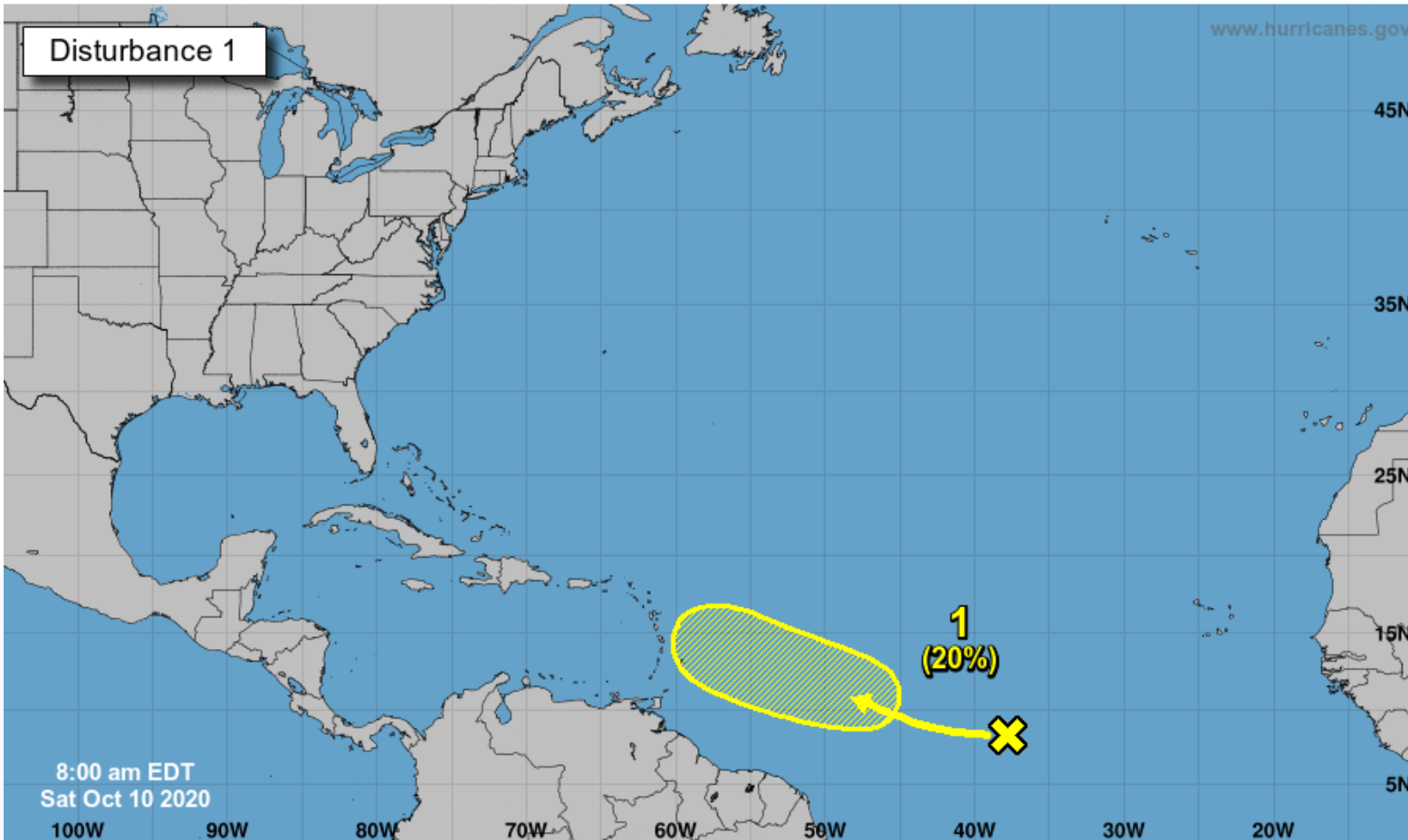
## Five-Day Graphical Tropical Weather Outlook

National Hurricane Center Miami, Florida



www.hurricanes.gov

Disturbance 1



A westward-moving tropical wave is producing disorganized showers and thunderstorms over the central Tropical Atlantic.

Slow development of this system could be possible later this weekend or early next week while the wave continues moving westward at 15 to 20 mph.

Upper-level winds are forecast to become unfavorable for further development by the middle of next week.

**This system does not need to be monitored for Florida impacts at this time, if at all.**

**\*Formation chance through 48 hrs...low...10%**

**\*Formation chance through 5 days...low...20%**

Current Disturbances and Five-Day Cyclone Formation Chance:   
 Tropical or Sub-Tropical Cyclone:   
    X < 40%    X 40-60%    X > 60%   
    ○ Depression    ○ Storm    ○ Hurricane   
    ⊗ Post-Tropical Cyclone or Remnants



# Florida Outlook

## Florida Outlook:

- **Tornado Watch:** Escambia, Santa Rosa, Okaloosa – until 2 PM ET/1 PM CT. Additional watches farther east may be needed.
- Isolated tornadoes and tropical-storm-force wind gusts are possible today in rain bands. The Storm Prediction Center has outlined the Panhandle in a Marginal Risk for severe weather.
- Swells from Delta will result in a high rip current risk at Gulf Coast beaches into this weekend.
- High surf of 5-6' in the Panhandle may result in beach erosion and some overwash in locations with damaged dune lines from recent Hurricane Sally. High Surf Advisories are in effect for Escambia through Bay Counties.
- 1-2' of storm surge is occurring this morning along the Panhandle and Big Bend. Coastal flooding should subside over the next day or so.
- About 1-2" of rain is expected along the Panhandle, locally up to 3-4" possible in the heavier rain bands. This may result in an isolated flash flood threat if slow-moving or training storms occur.
- Wind gusts of 25-35 mph cannot be ruled out along the western Panhandle coast. Higher gusts are possible in any rain bands. A Wind Advisory is in effect for Escambia County.

This will be the final briefing packet for this event. Daily weather updates can be found in WebEOC Info Message #3518. For the latest information on the tropics, please visit the National Hurricane Center website at [www.hurricanes.gov](http://www.hurricanes.gov).





# TROPICAL UPDATE



Created by:

Cameron Young, Assistant State Meteorologist

[Cameron.Young@em.myflorida.com](mailto:Cameron.Young@em.myflorida.com)

State Meteorological Support Unit

Florida Division of Emergency Management

Users wishing to subscribe (approval pending) to this distribution list, register at:

[https://public.govdelivery.com/accounts/FLDEM/subscriber/new?topic\\_id=SERT\\_Met\\_Tropics](https://public.govdelivery.com/accounts/FLDEM/subscriber/new?topic_id=SERT_Met_Tropics).

Other reports available for subscription are available at:

<https://public.govdelivery.com/accounts/FLDEM/subscriber/new?preferences=true>