



TROPICAL UPDATE



5:00 PM EDT

Friday, October 9, 2020

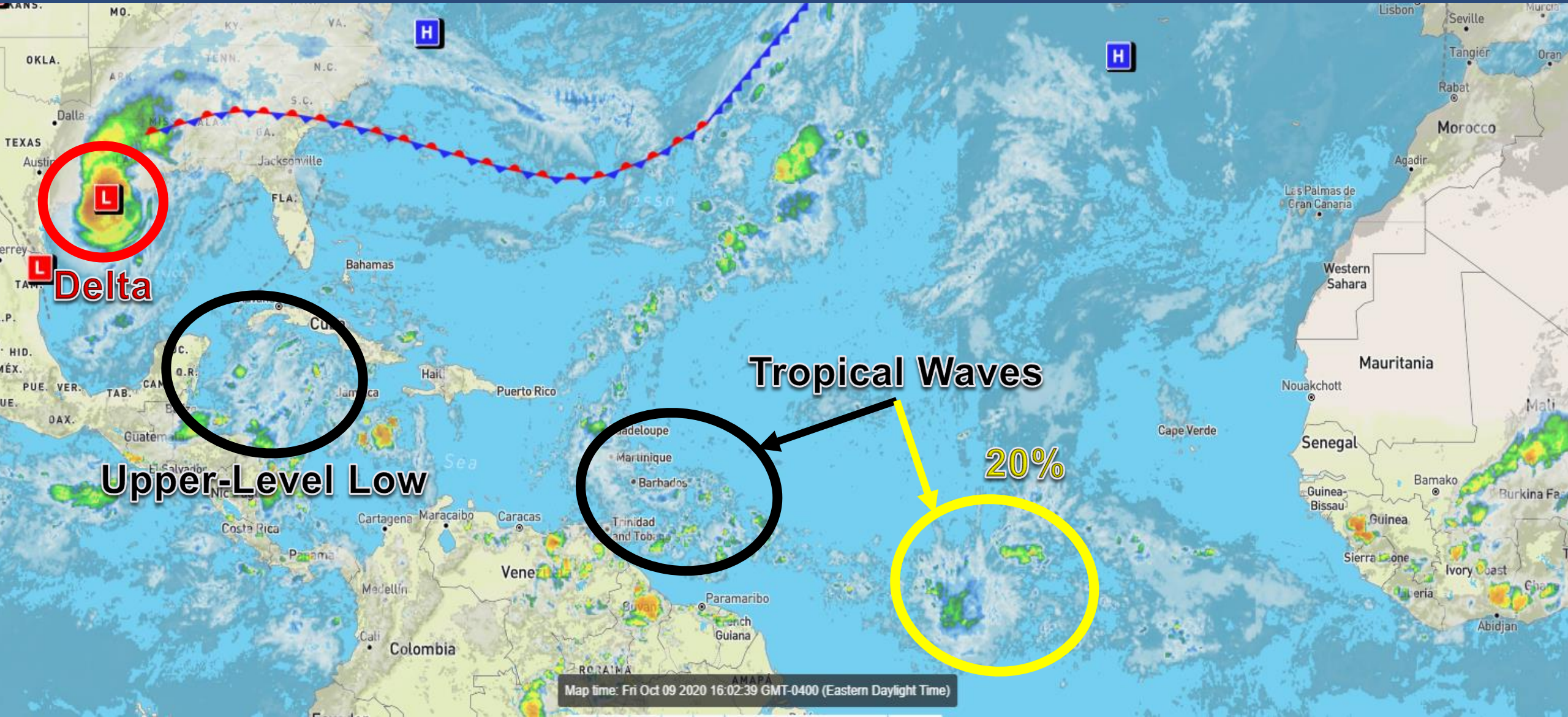
Hurricane Delta & Tropical Atlantic Wave (20%)

This update is intended for government and emergency response officials, and is provided for informational and situational awareness purposes only. Forecast conditions are subject to change based on a variety of environmental factors. For additional information, or for any life safety concerns with an active weather event please contact your County Emergency Management or Public Safety Office, local National Weather Service forecast office, or visit the National Hurricane Center website at www.hurricanes.gov.



Atlantic Basin Satellite Image

Chance of development: — None — Low — Medium — High



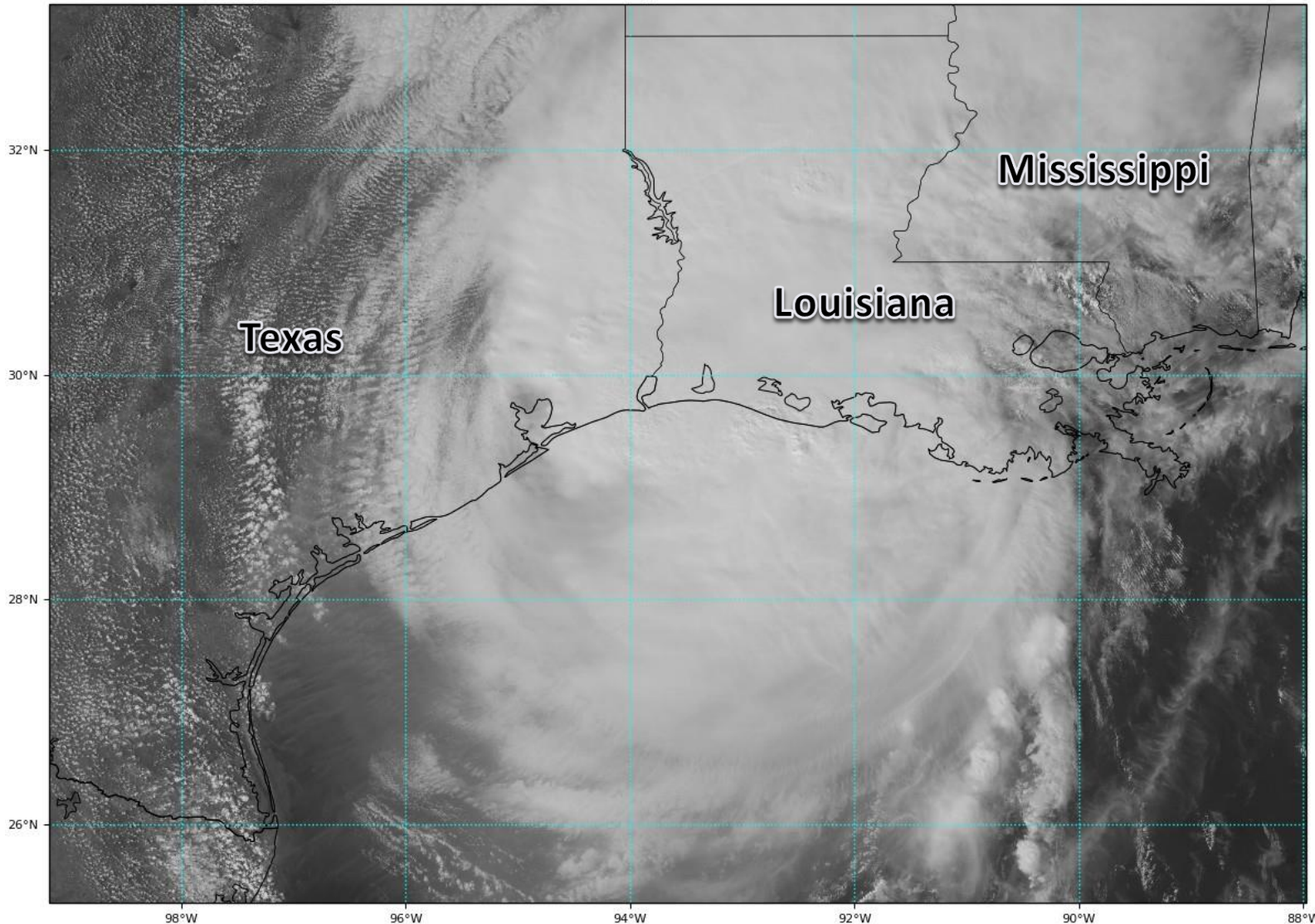


Satellite Imagery

Hurricane Delta – Gulf of Mexico

GOES-16 Channel 2 (visible) Reflectance at 19:57Z Oct 09, 2020

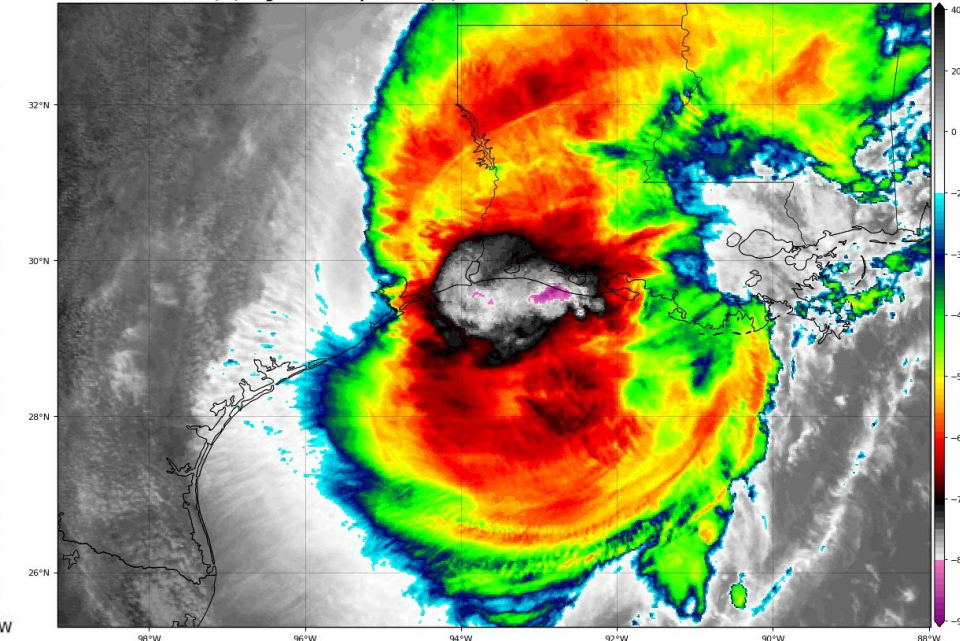
TROPICALTIDBITS.COM



Shear, dry air, cooler water, and land interaction are disrupting Delta a bit as it weakens coming onshore. However, the impacts remain the same. Landfall is expected this evening near Cameron, Louisiana.

GOES-16 Channel 13 (IR) Brightness Temperature (°C) at 19:57Z Oct 09, 2020

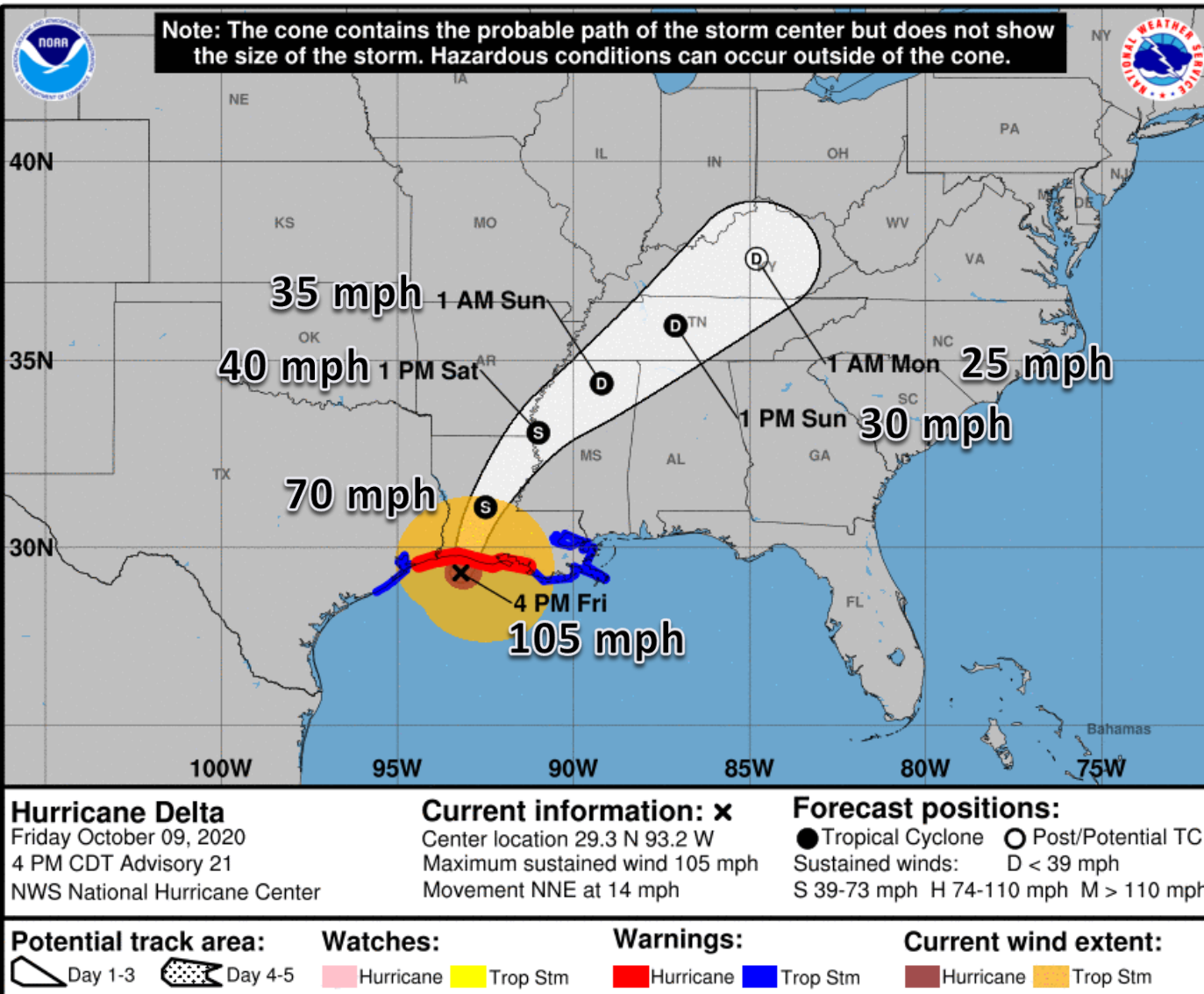
TROPICALTIDBITS.COM





Official Forecast Track

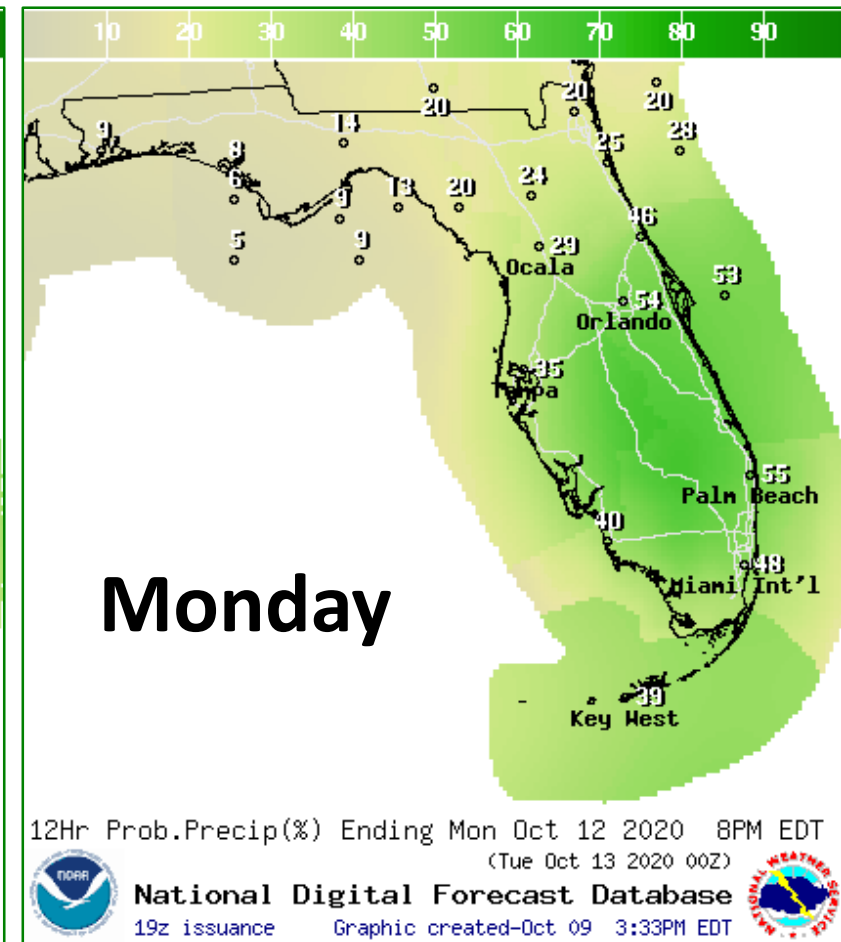
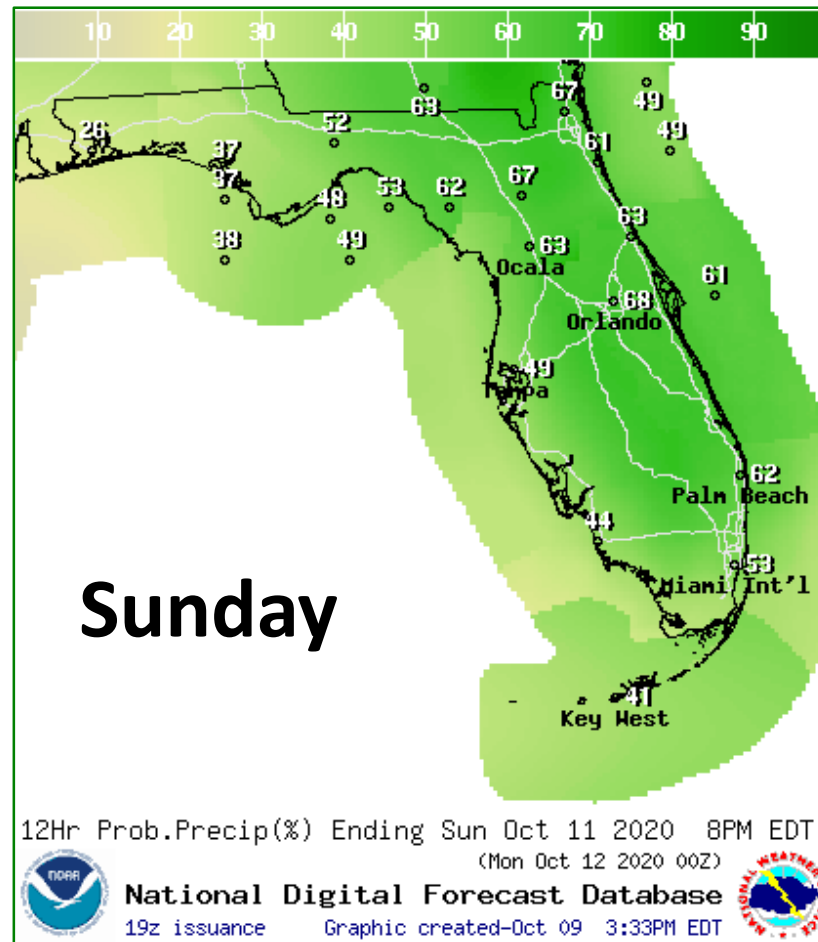
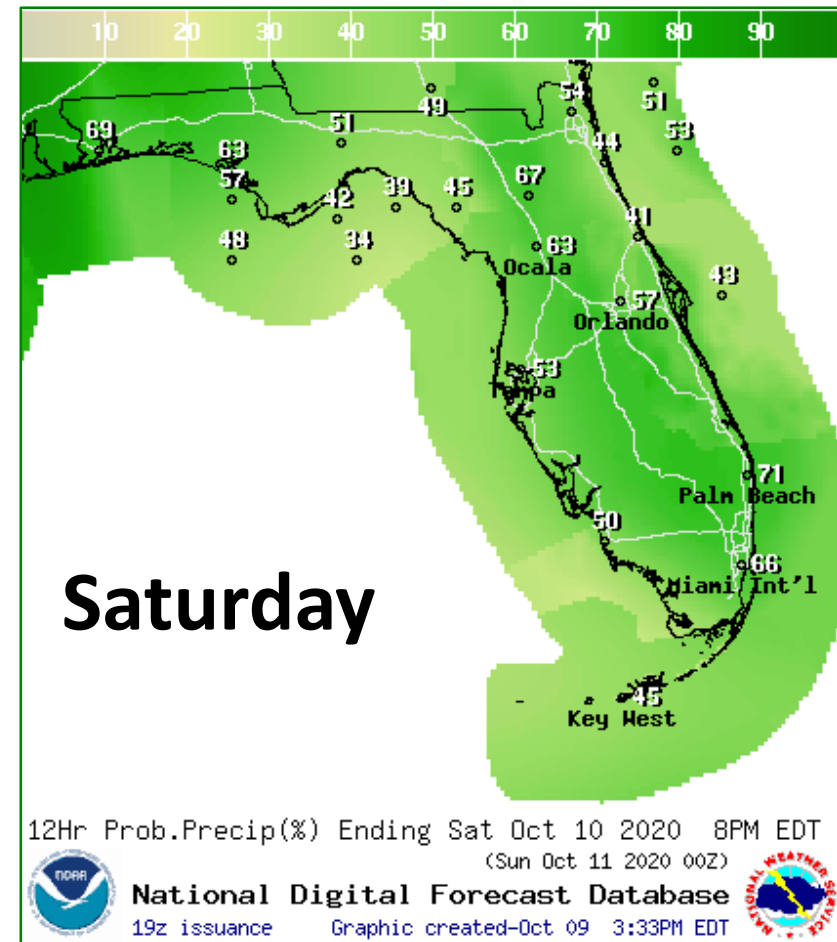
From the National Hurricane Center –Hurricane Delta



- Delta has weakened slightly today and currently has winds around 105 mph (Category 2).
- The center of Delta is located only 35 miles south of Cameron, LA, moving north-northeast at 14 mph.
- Delta's eyewall is moving onshore as of this packet.
- Delta will make landfall around 7 PM ET near Cameron, Louisiana. Rapid weakening is forecast thereafter.



Rain Chances Next 3 Days



Rain chances remain elevated this weekend as tropical moisture from Hurricane Delta remains in place. Dry air filters into North Florida Monday.

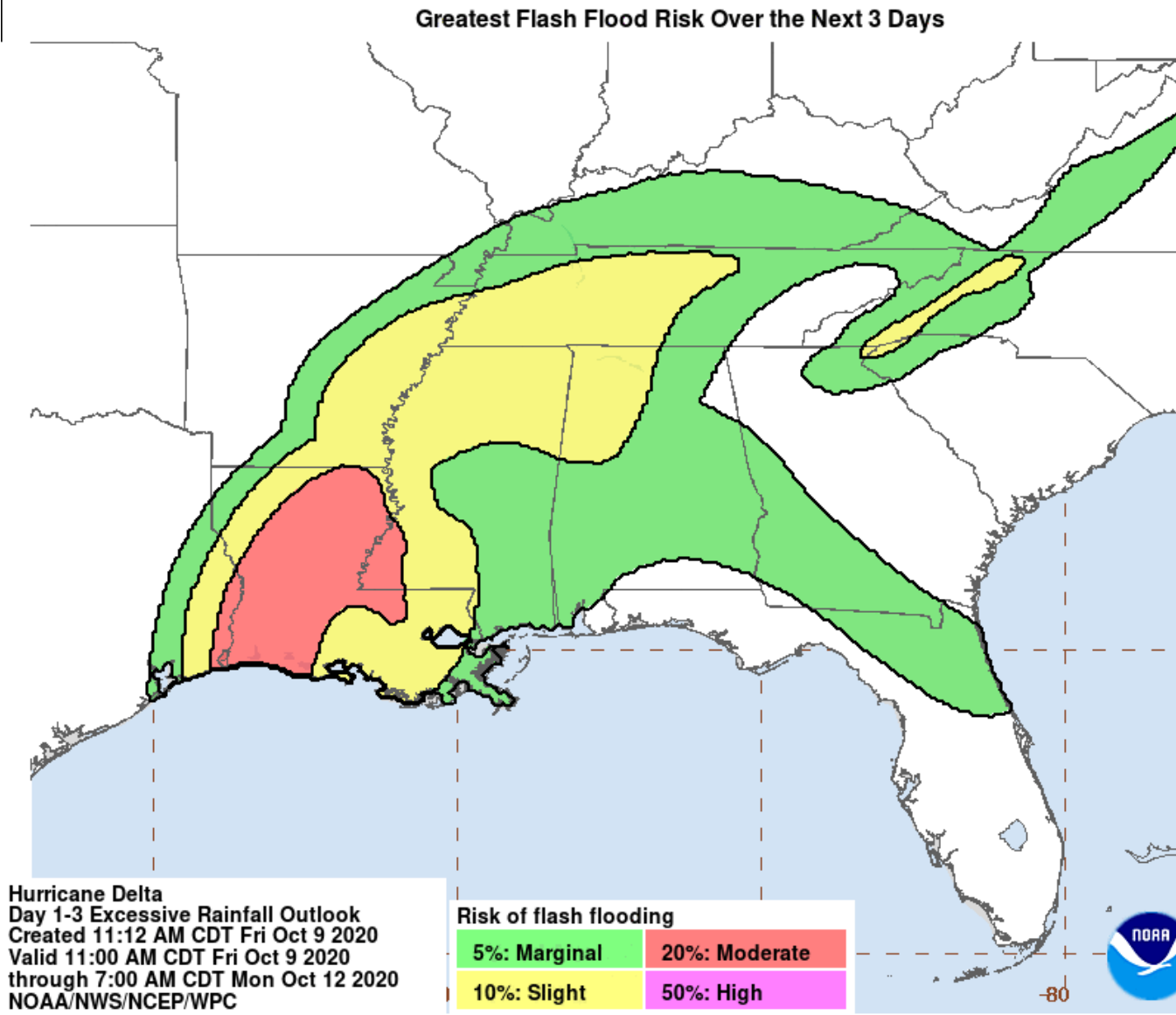


Flash Flood Outlook

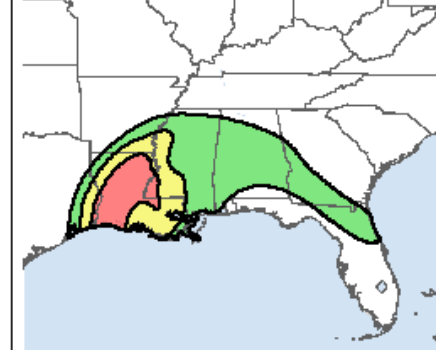
3-Day Event Summary

An isolated flash flood cannot be ruled out in the far western Panhandle. The greater flash flood threat will be near the path of Delta to our northwest.

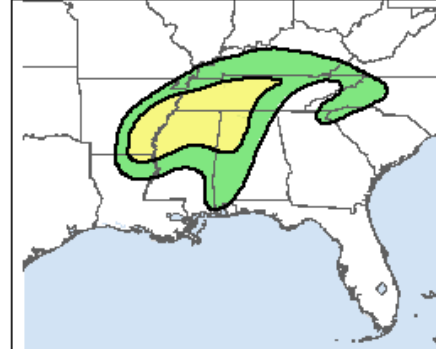
Tropical moisture will also remain in place across Northeast Florida, where slow-moving or training thunderstorms could also produce isolated flash flooding today and possibly Saturday.



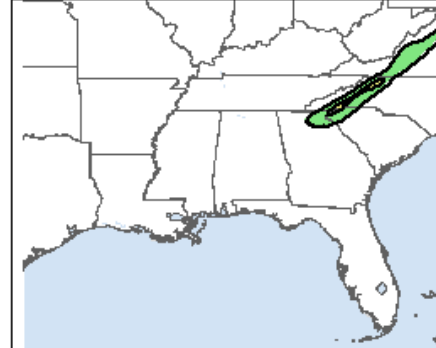
Day 1 Through Saturday morning



Day 2 Through Sunday morning



Day 3 Through Monday morning



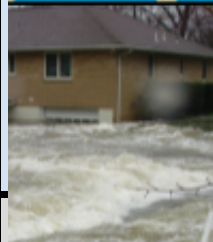




Flash Flood Risk Categories

Understanding the Weather Prediction Center Risk Scale

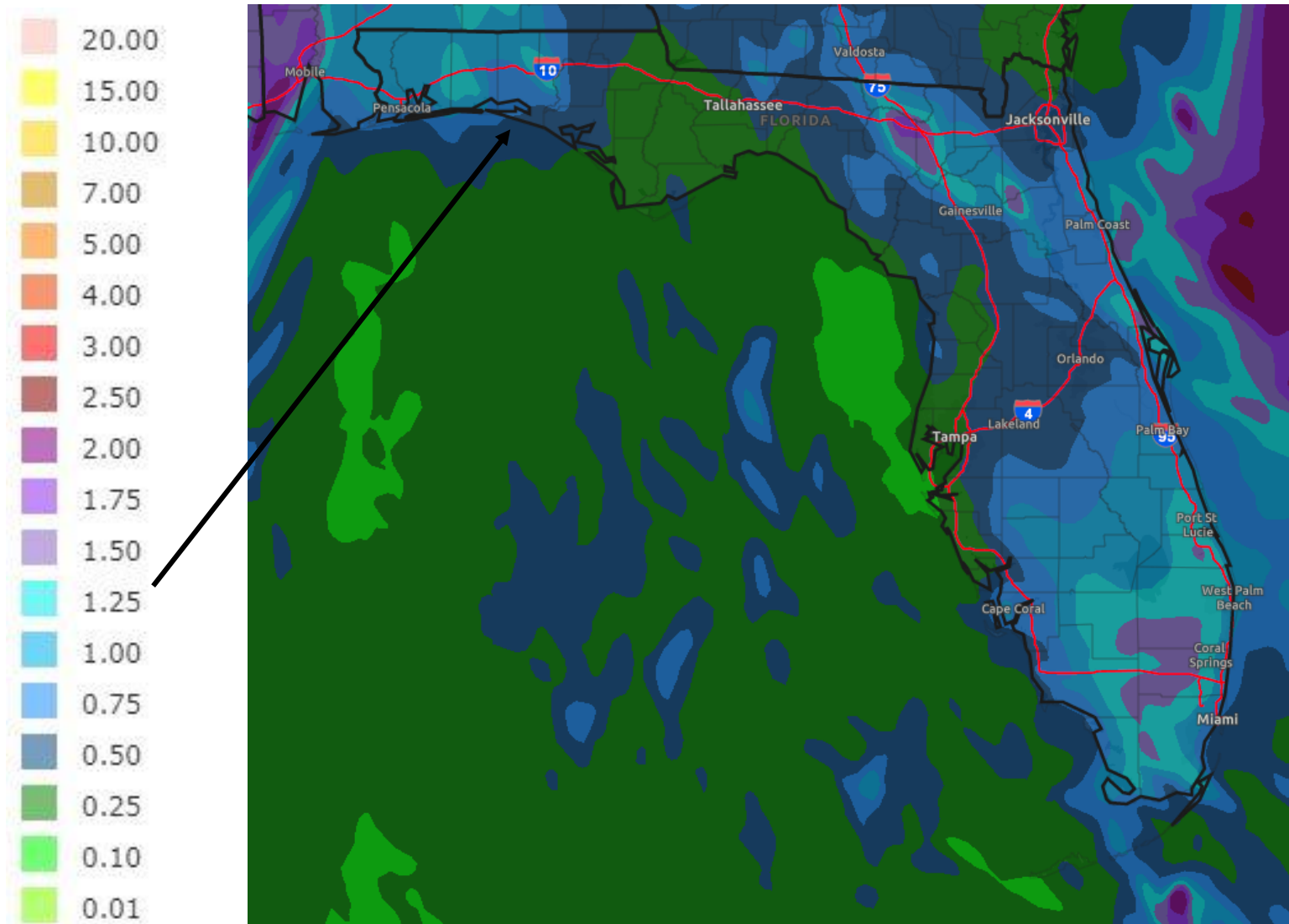
Understanding WPC Excessive Rainfall Risk Categories

No Area/Label	MARGINAL (MRGL)	SLIGHT (SLGT)	MODERATE (MDT)	HIGH (HIGH)
Flash floods are generally not expected.	Isolated flash floods possible	Scattered flash floods possible	Numerous flash floods likely	Widespread flash floods expected
Localized and primarily affecting places that can experience rapid runoff with heavy rainfall.	Mainly localized. Most vulnerable are urban areas, roads, small streams and washes. Isolated significant flash floods possible.	Numerous flash flooding events with significant events possible. Many streams may flood, potentially affecting larger rivers.	Severe, widespread flash flooding. Areas that don't normally experience flash flooding, could. Lives and property in greater danger.	
www.wpc.ncep.noaa.gov @NWSWPC				
Flash flooding near me?	Flash Flooding	NO Flash Flooding		
 WEATHER PREDICTION CENTER		Risk of rainfall exceeding flash flood guidance within 25 miles of a point to the right of a line		
		HIGH: > 50%	SLGT: 10%-20%	
		MDT: 20%-50%	MRGL: 5%-10%	



Rainfall Totals Next 5 Days

Will Change Based on Track Shifts – Based on Perfect Forecast into LA – Locally Higher Totals

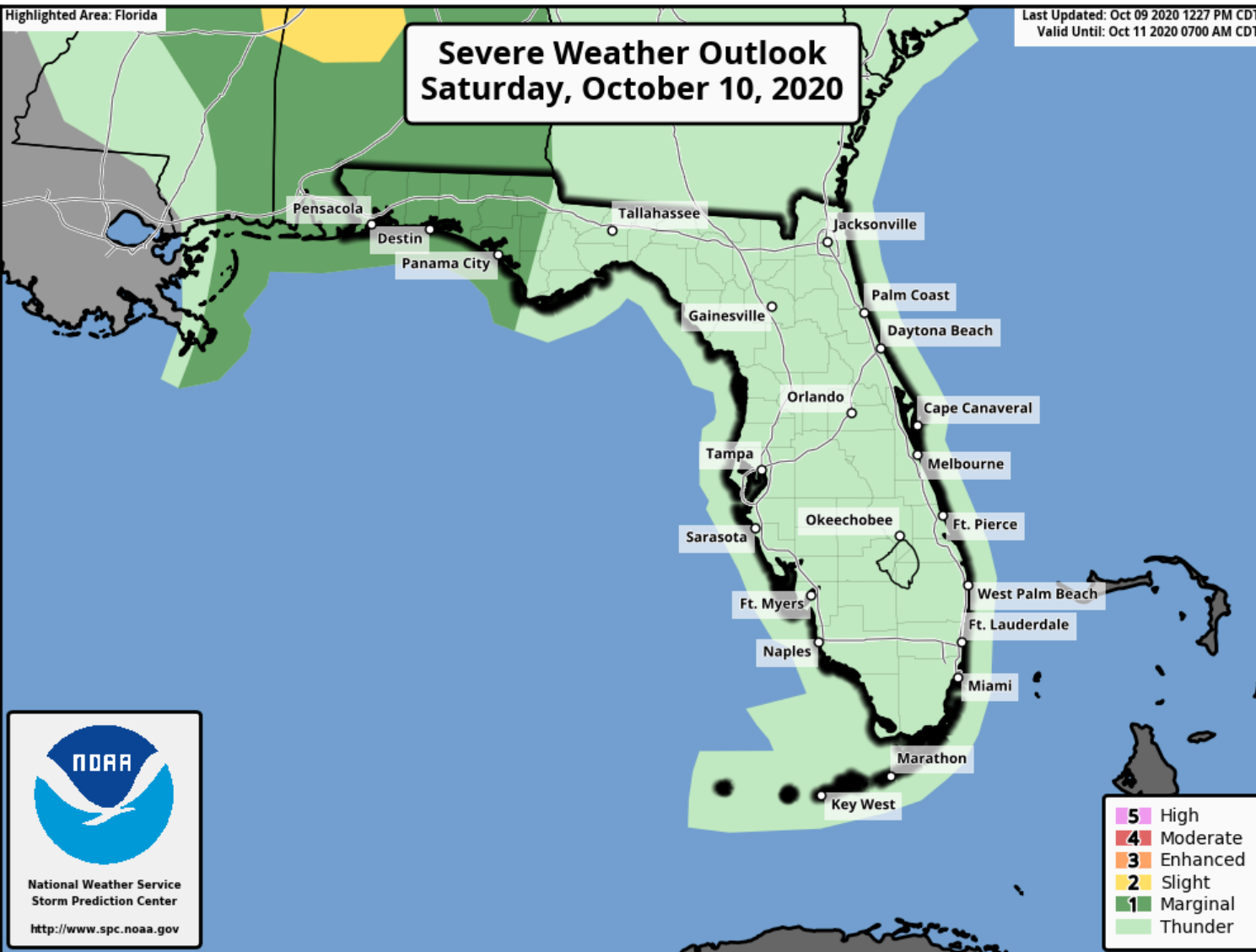


- Locally heavy rainfall in the Peninsula each afternoon.
- Heavy rainfall is possible today-Saturday in the western Florida Panhandle as Delta makes landfall and moves inland across Mississippi and Alabama (1-2").



Severe Weather Outlook for Saturday

From the Storm Prediction Center



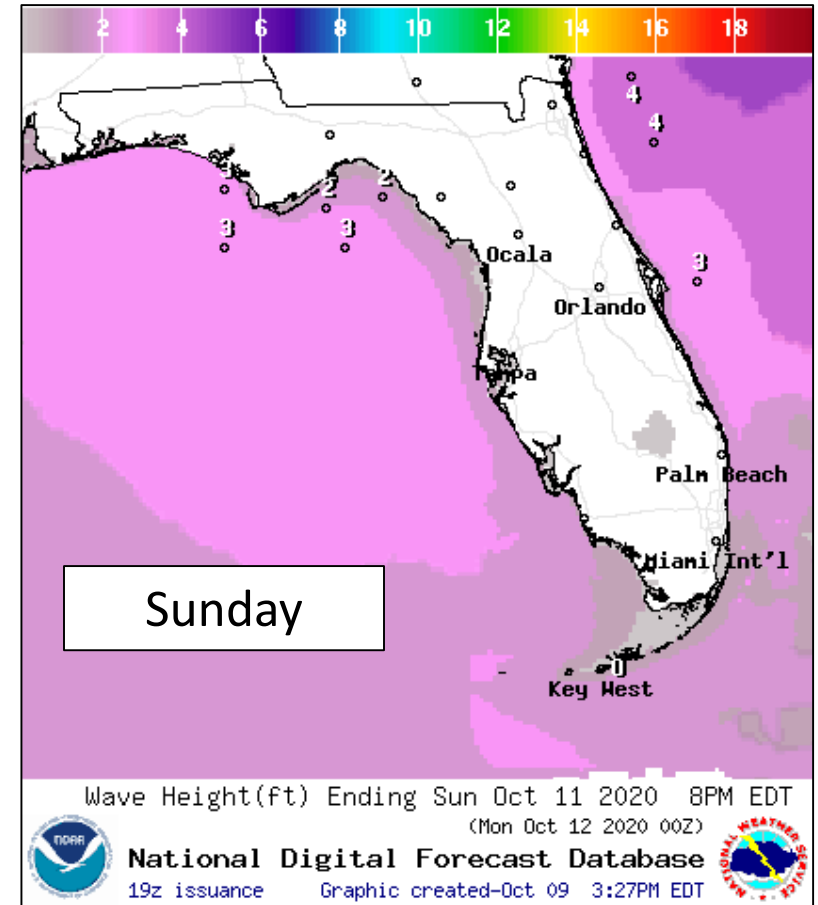
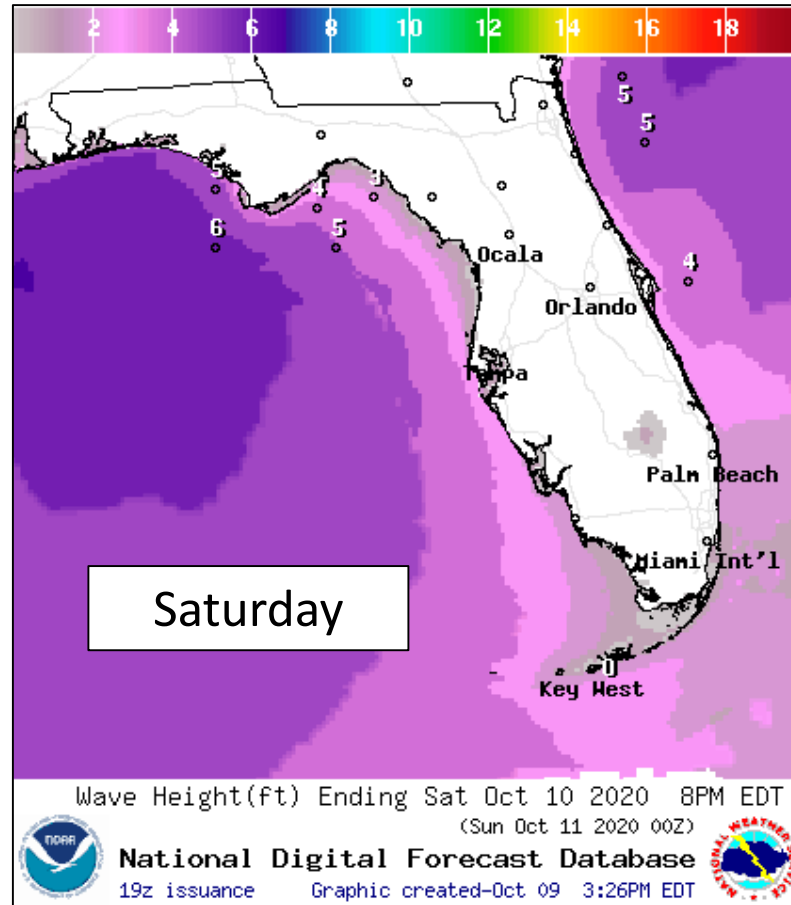
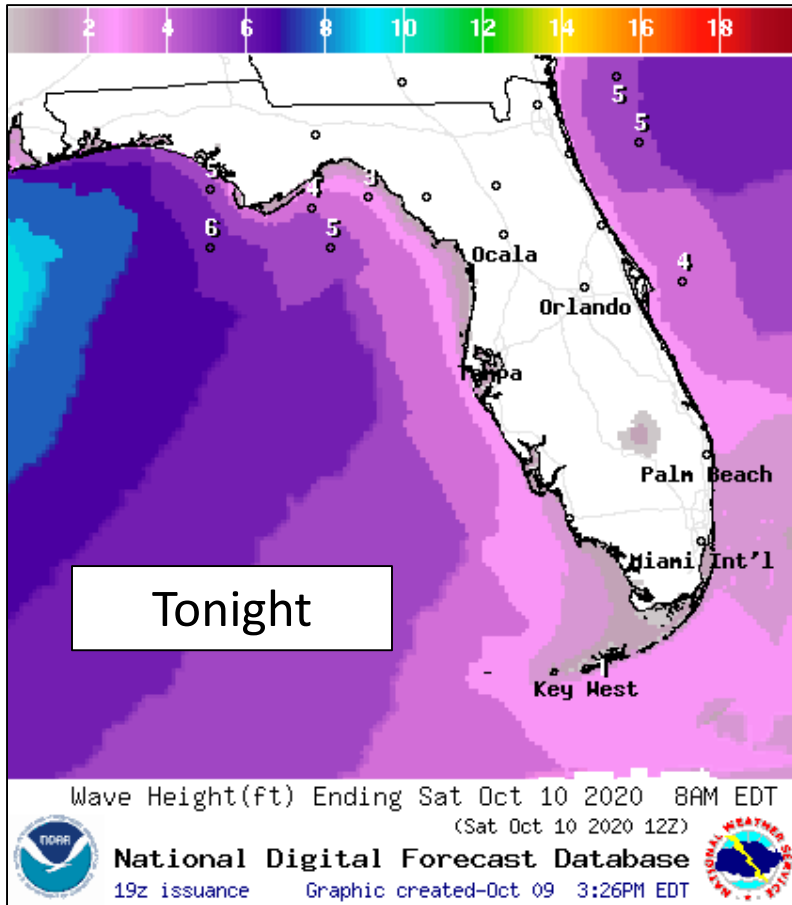
On Saturday, as Delta moves across northern Louisiana into Mississippi, outer bands will move across the Panhandle, bringing the threat for isolated tornado through the day.

The isolated tornado threat could begin pre-dawn in the far western Panhandle, then continue eastward through the day on Saturday.



Forecast Wave Heights

Late Week – Hurricane Delta



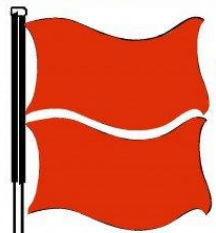
Wave heights will increase in the Gulf of Mexico starting tonight from Delta, reaching 6-8' in the Panhandle tonight. High surf will create beach erosion and minor coastal flooding, particularly in locations that experienced significant beach/dune damage from Hurricane Sally a few weeks ago. Swells will also impact the West Coast this weekend.



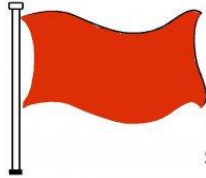
Rip Current Outlook

Today

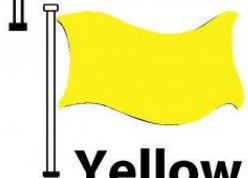
BEACH FLAG WARNING SYSTEM



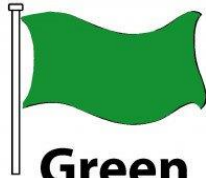
Double Red
Water Closed to
Public Use



Red
High Hazard
(rough conditions,
such as strong surf
and or currents)



Yellow
Medium Hazard
(light surf and or
currents)

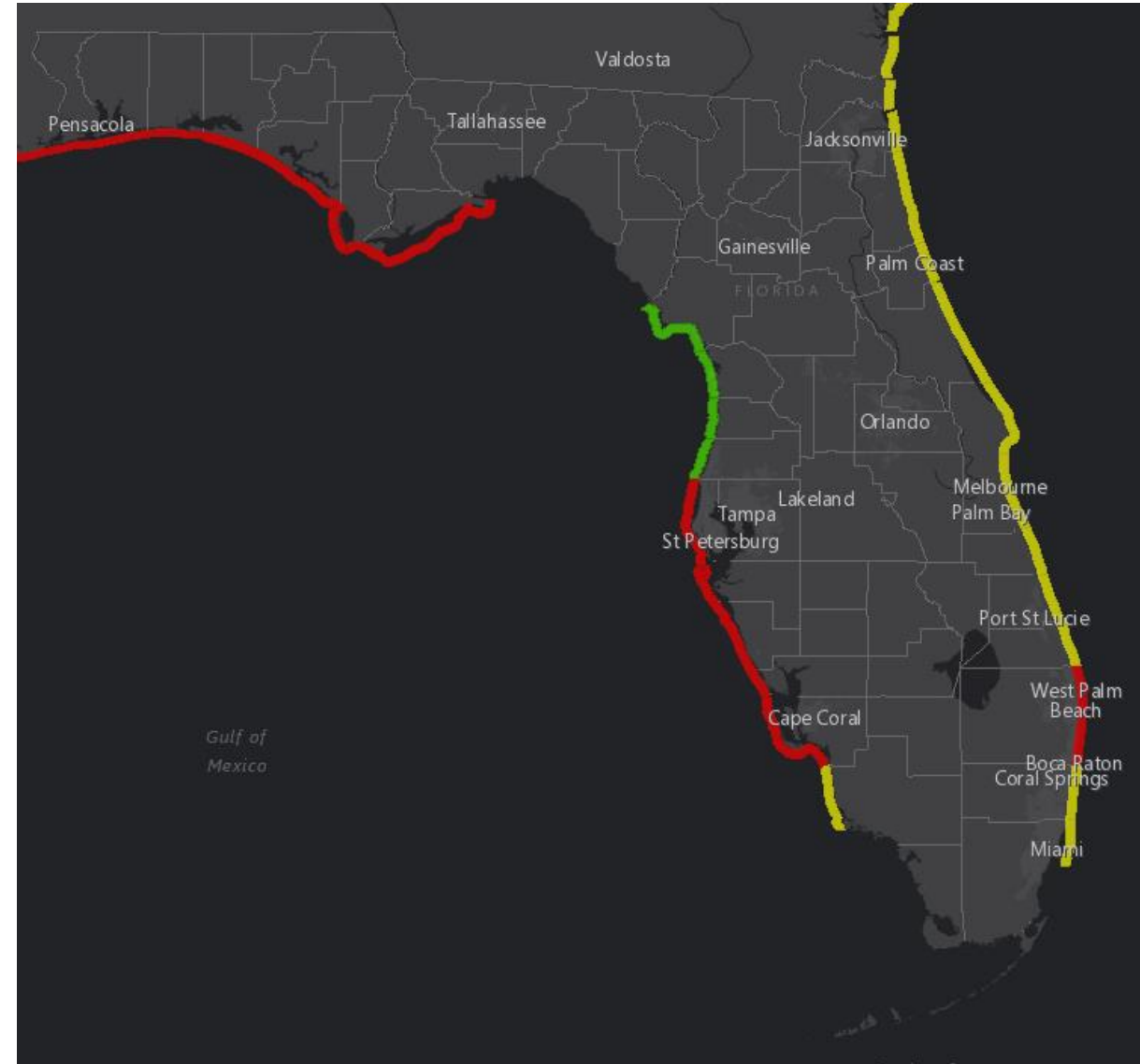


Green
Low Hazard
(calm conditions)



Purple
Marine Pest
(jellyfish, stingrays
& dangerous fish)

Swells from Delta along the Gulf Coast and breezy northeast winds along the East Coast will elevate the rip current risk this week.





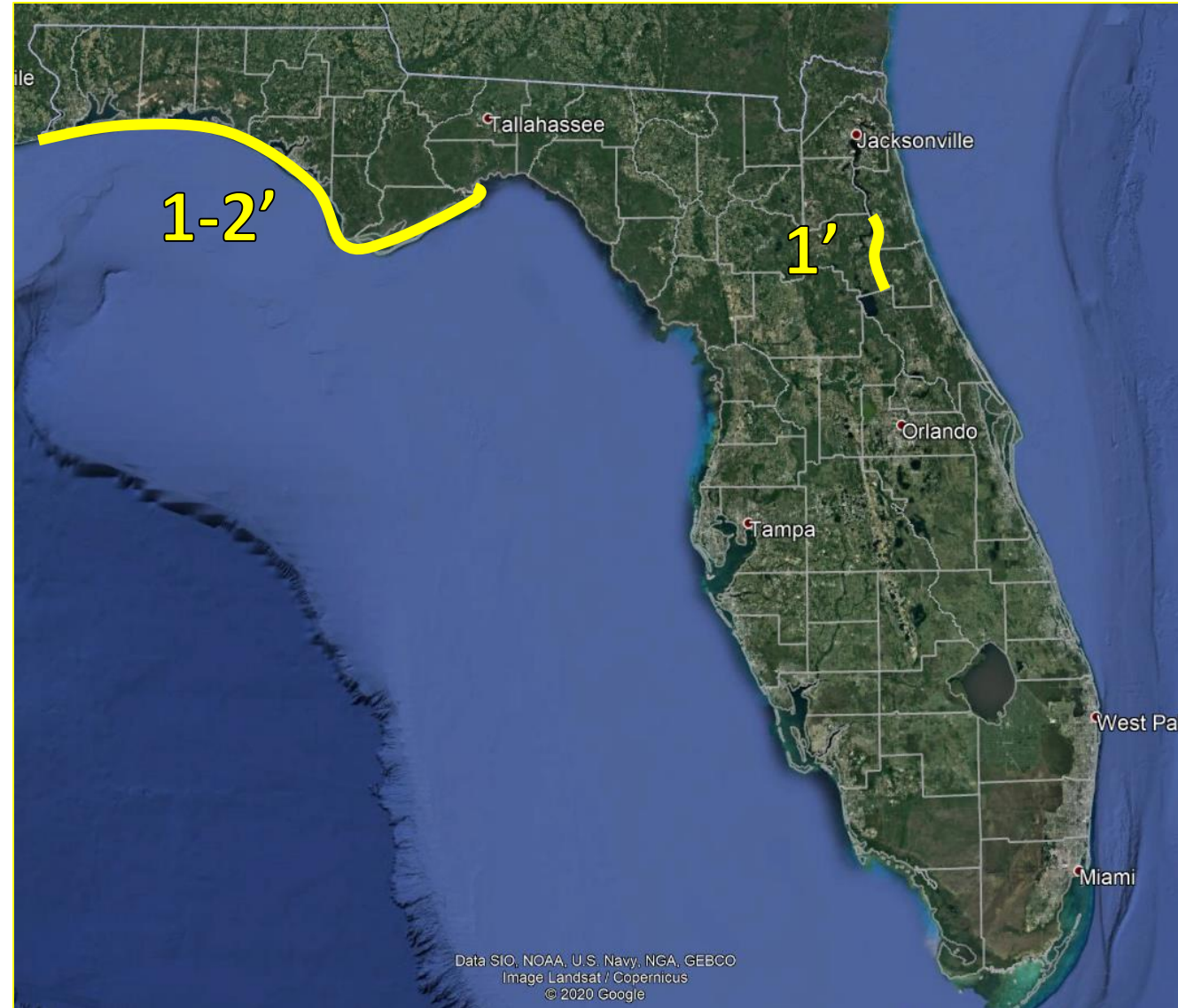
Storm Surge/Coastal Flooding

This Weekend

South to southeast winds from Hurricane Delta will result in elevated tides along the Panhandle and western Big Bend coast. Tides have been running about 1-1.5' above normal, but up to 2' cannot be ruled out.

The 1' of coastal flooding along the St. Johns River is residual flooding from earlier this week.

Coastal Flood Statements are in effect Putnam and Flagler Counties along the St. Johns River.

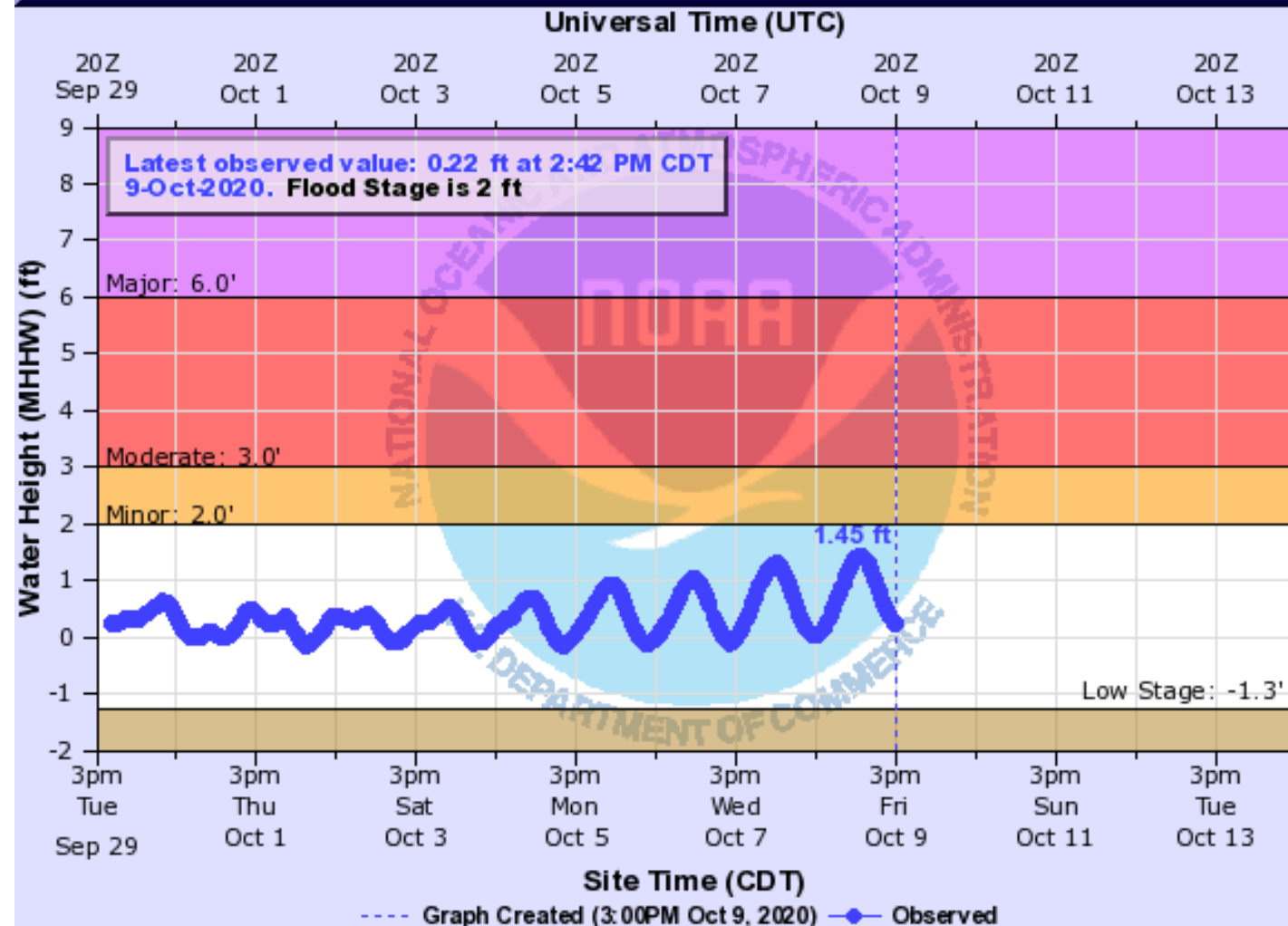




Gulf of Mexico at Pensacola

[Hydrograph Link](#)

GULF OF MEXICO TIDE GAUGE NEAR PENSACOLA (IN MHHW)

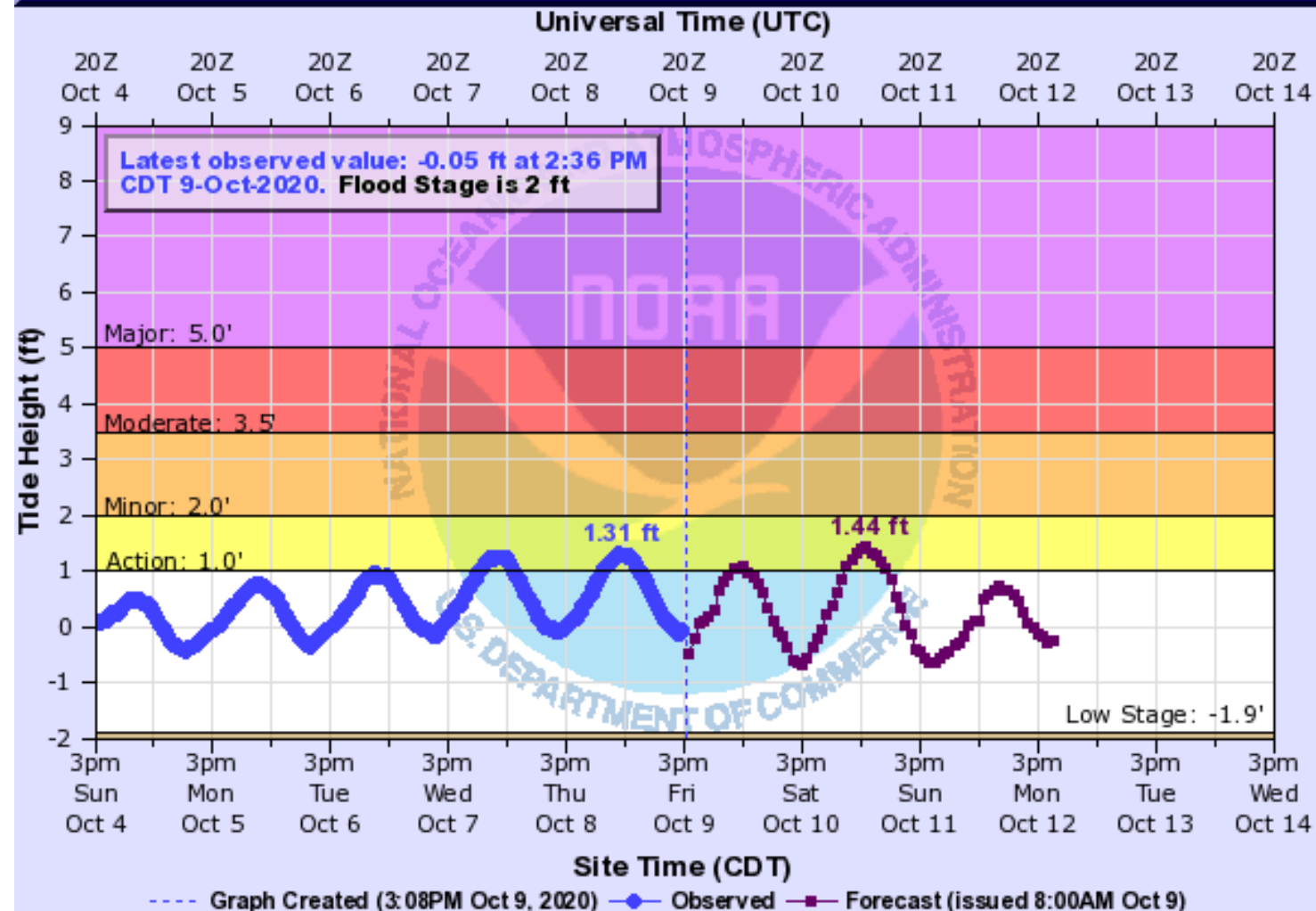




Gulf of Mexico at Panama City

[Hydrograph Link](#)

GULF OF MEXICO TIDE GAUGE AT PANAMA CITY (IN MHHW)



- 3 A lot west of West 4th Street begins to flood near the marina. East Beach Drive at Cherry Street becomes impassible. Low lying areas along the bayous start to flood, mainly in the backyards of homes. Flooding begins to affect backyards of homes west of Wildwood Rd north of US-98.
- 2.7 Flooding begins at St Andrew State Park and on the east end of Grand Lagoon near Alligator Point.
- 2 Water will begin to overwash the intersection of East Beach Drive and Cherry Street southeast of the marina. The parking lot at 4th Street and West Government floods.



Tropical Weather Outlook

Possible Area of Development During the Next 5 Days ([LINK](#))



Five-Day Graphical Tropical Weather Outlook

National Hurricane Center Miami, Florida



www.hurricanes.gov

Disturbance 1

2:00 pm EDT
Fri Oct 9 2020

100W 90W 80W 70W 60W 50W 40W 30W 20W

Current Disturbances and Five-Day Cyclone Formation Chance:
Tropical or Sub-Tropical Cyclone: ○ Depression ⚡ Storm 🌀 Hurricane
⊗ Post-Tropical Cyclone or Remnants

✕ < 40% ✕ 40-60% ✕ > 60%

A westward-moving tropical wave located several hundred miles southwest of the Cabo Verde Islands continues to produce disorganized showers and a few thunderstorms.

Environmental conditions could be conducive for some slow development of the system this weekend or early next week while it is located over the tropical Atlantic well east of the Lesser Antilles

Upper-level winds are forecast to become unfavorable for further development by the middle of next week.

This system does not need to be monitored for Florida impacts at this time, if at all.

***Formation chance through 48 hrs...low...near 0%**

***Formation chance through 5 days...low...20%**

1
(20%)





Florida Outlook

Florida Outlook:

- **While some impacts are possible in the Panhandle, they are not forecast to be significant.**
- Swells from Delta will result in a high rip current risk at Gulf Coast beaches into this weekend.
- High surf of 6-8' in the Panhandle may result in significant beach erosion and some overwash in locations with damaged dune lines from recent Hurricane Sally. High Surf Advisories are in effect for Escambia through Bay Counties.
- 1-2' of storm surge is possible along the Panhandle and Big Bend. Tides are already running about 1-1.5' above normal at some locations along the Panhandle and Big Bend.
- About 1-2" of rain is expected along the Panhandle, locally up to 3-4" possible in the heavier rain bands. This may result in an isolated flash flood threat if slow-moving or training storms occur.
- There is a chance for an isolated tornado or two over the Panhandle on Saturday. The Storm Prediction Center has outlined the Panhandle in a Marginal Risk for severe weather.
- Wind gusts of 25-35 mph cannot be ruled out along the western Panhandle coast. Higher gusts are possible in any rain bands. A Wind Advisory is in effect for Escambia County

The next briefing packet will be issued Saturday morning. For the latest information on the tropics, please visit the National Hurricane Center website at www.hurricanes.gov.



TROPICAL UPDATE



Created by:

Cameron Young, Assistant State Meteorologist

Cameron.Young@em.myflorida.com

State Meteorological Support Unit

Florida Division of Emergency Management

Users wishing to subscribe (approval pending) to this distribution list, register at:

https://public.govdelivery.com/accounts/FLDEM/subscriber/new?topic_id=SERT_Met_Tropics.

Other reports available for subscription are available at:

<https://public.govdelivery.com/accounts/FLDEM/subscriber/new?preferences=true>