



# TROPICAL UPDATE



8:00 AM EDT

Friday, October 9, 2020

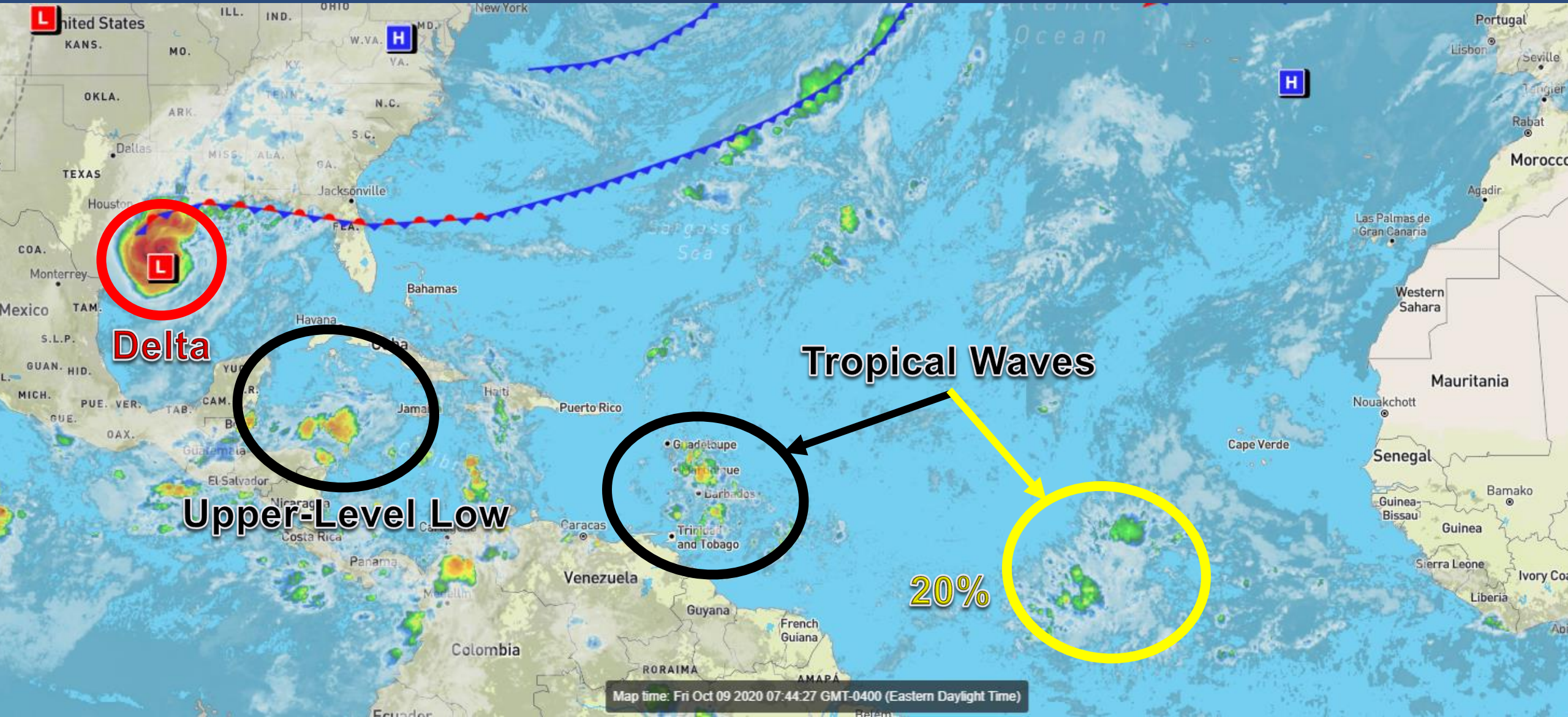
Major Hurricane Delta & Tropical Atlantic Wave (20%)

This update is intended for government and emergency response officials, and is provided for informational and situational awareness purposes only. Forecast conditions are subject to change based on a variety of environmental factors. For additional information, or for any life safety concerns with an active weather event please contact your County Emergency Management or Public Safety Office, local National Weather Service forecast office, or visit the National Hurricane Center website at [www.hurricanes.gov](http://www.hurricanes.gov).



# Atlantic Basin Satellite Image

Chance of development: — None — Low — Medium — High





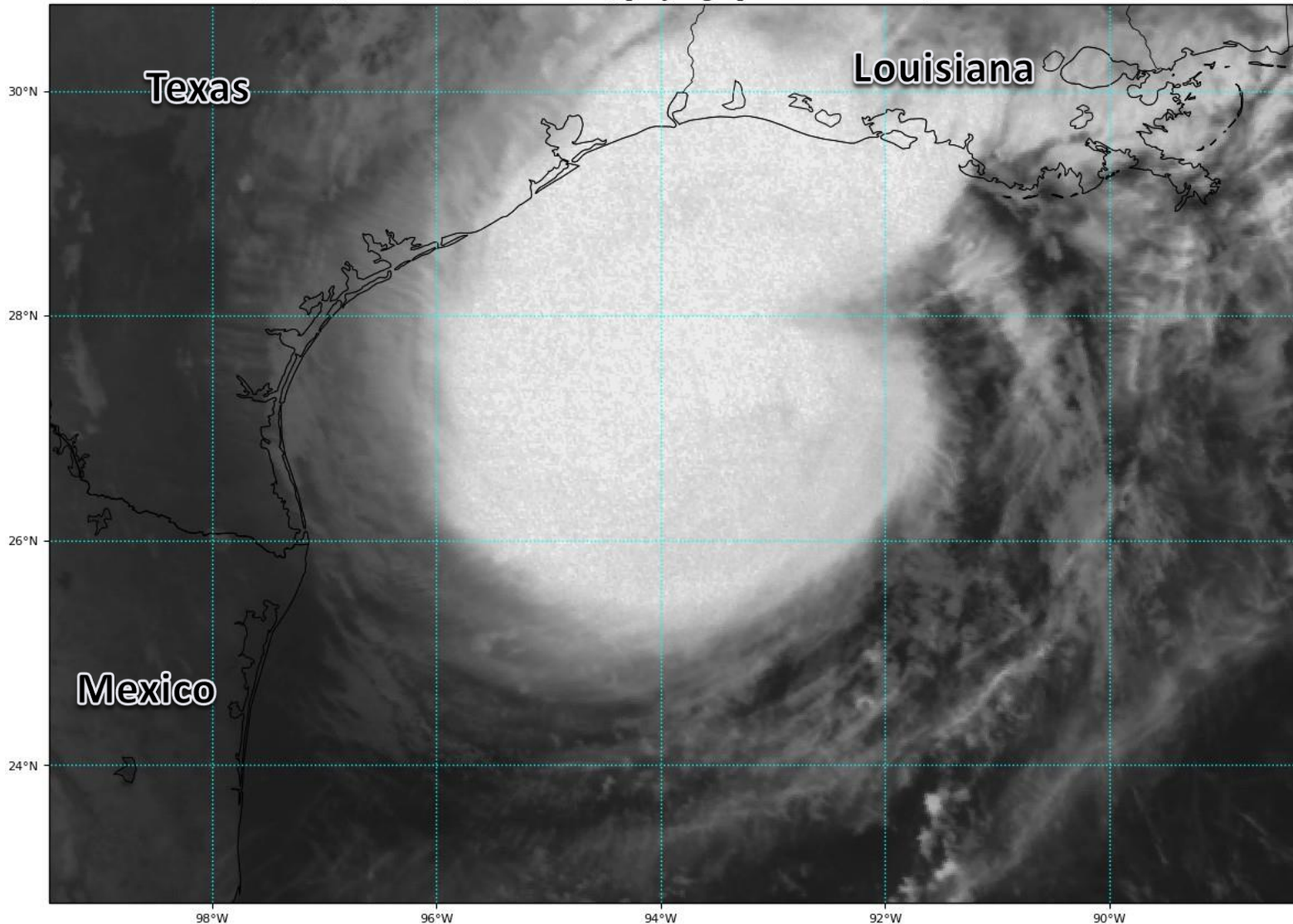


# Satellite Imagery

## Major Hurricane Delta – Gulf of Mexico

GOES-16 Channel 2 (visible) / Channel 7 (shortwave IR) [Day/Night] at 11:32Z Oct 09, 2020

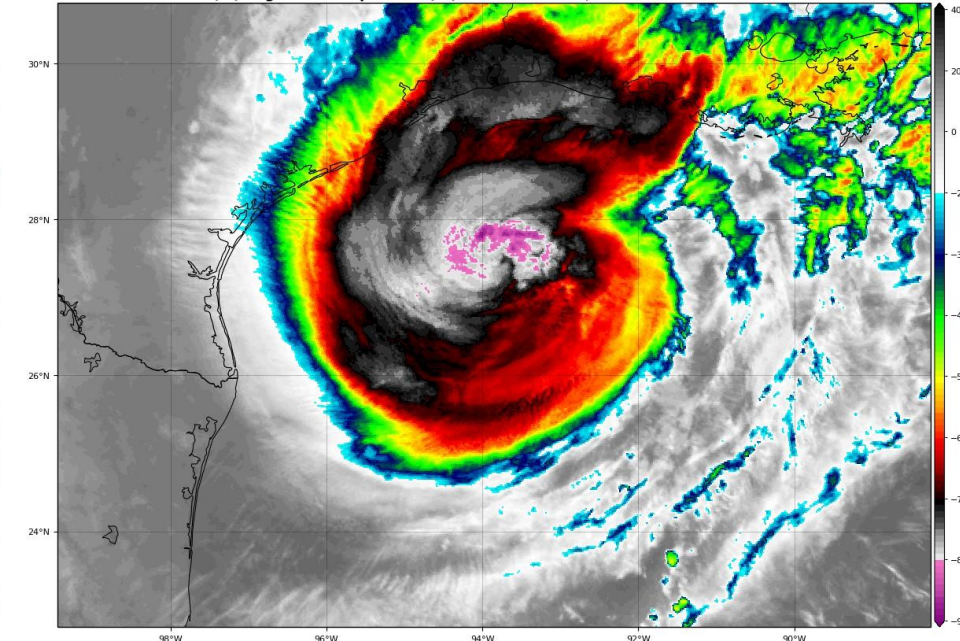
TROPICALTIDBITS.COM



Shear is beginning to take its toll on Hurricane Delta as it moves closer to the Louisiana coast. While some weakening is forecast, Delta will still make landfall as a high-end Category 2 or low-end Category 3 Hurricane this evening in southwest Louisiana.

GOES-16 Channel 13 (IR) Brightness Temperature (°C) at 11:32Z Oct 09, 2020

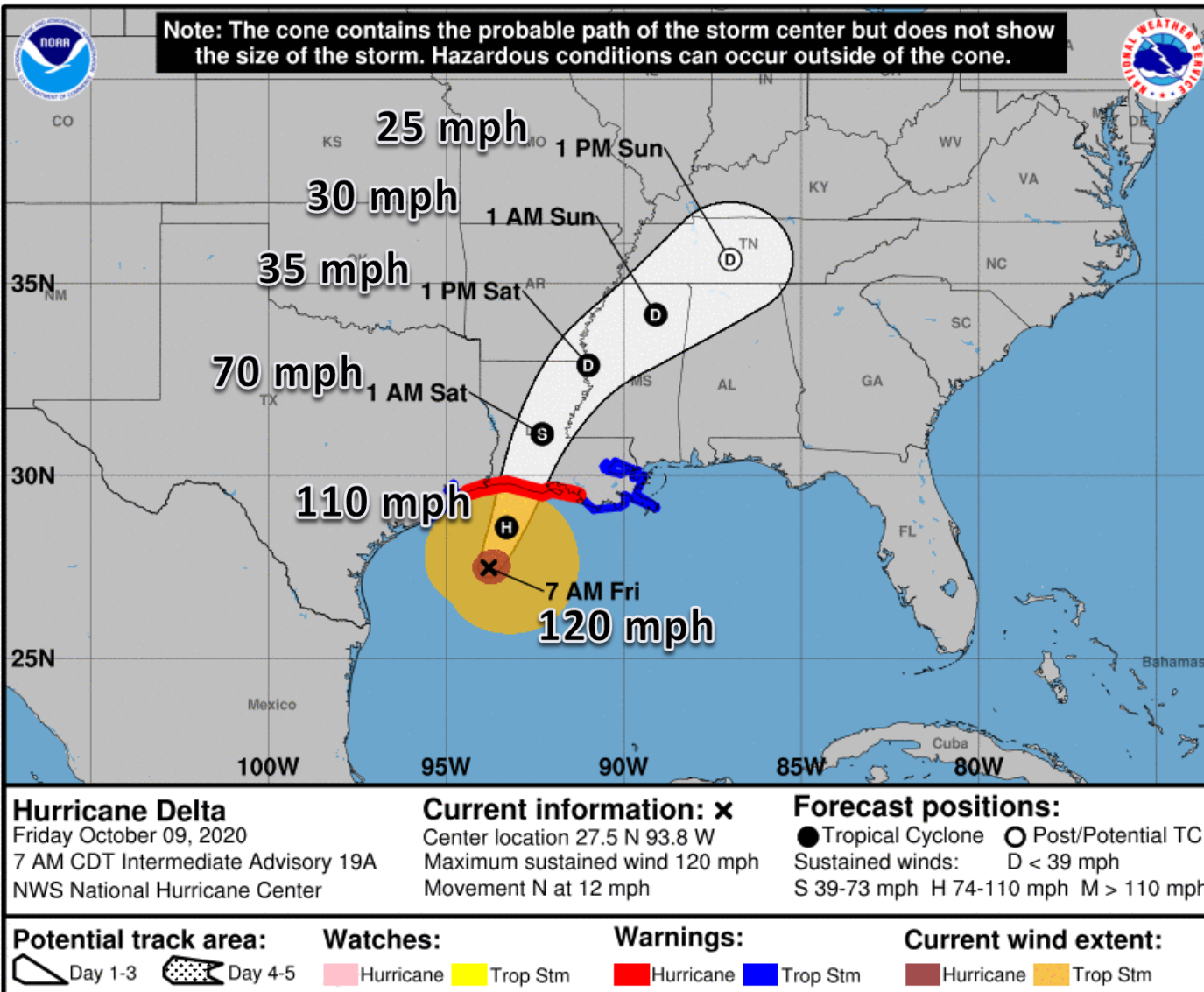
TROPICALTIDBITS.COM





# Official Forecast Track

## From the National Hurricane Center – Major Hurricane Delta

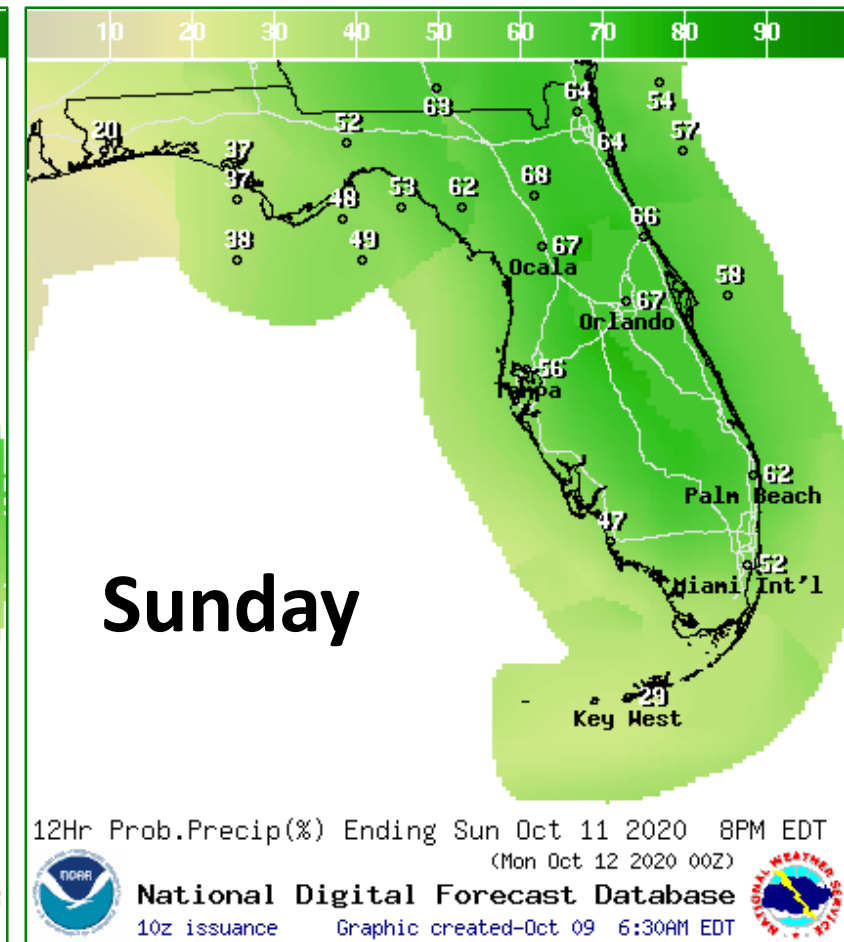
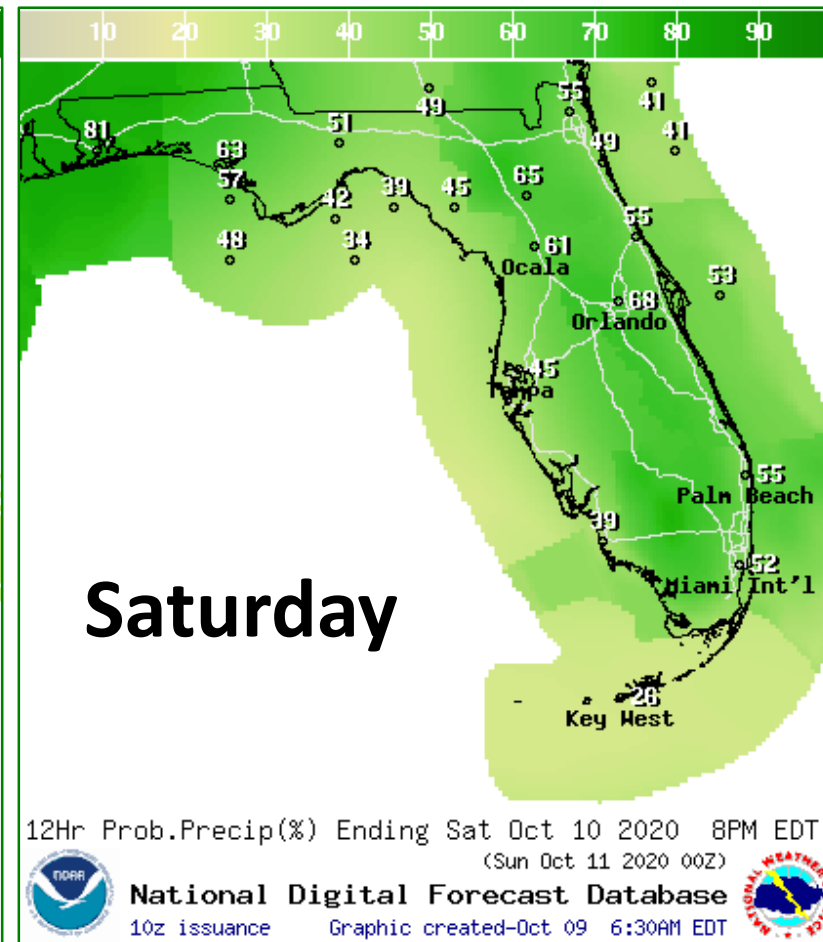
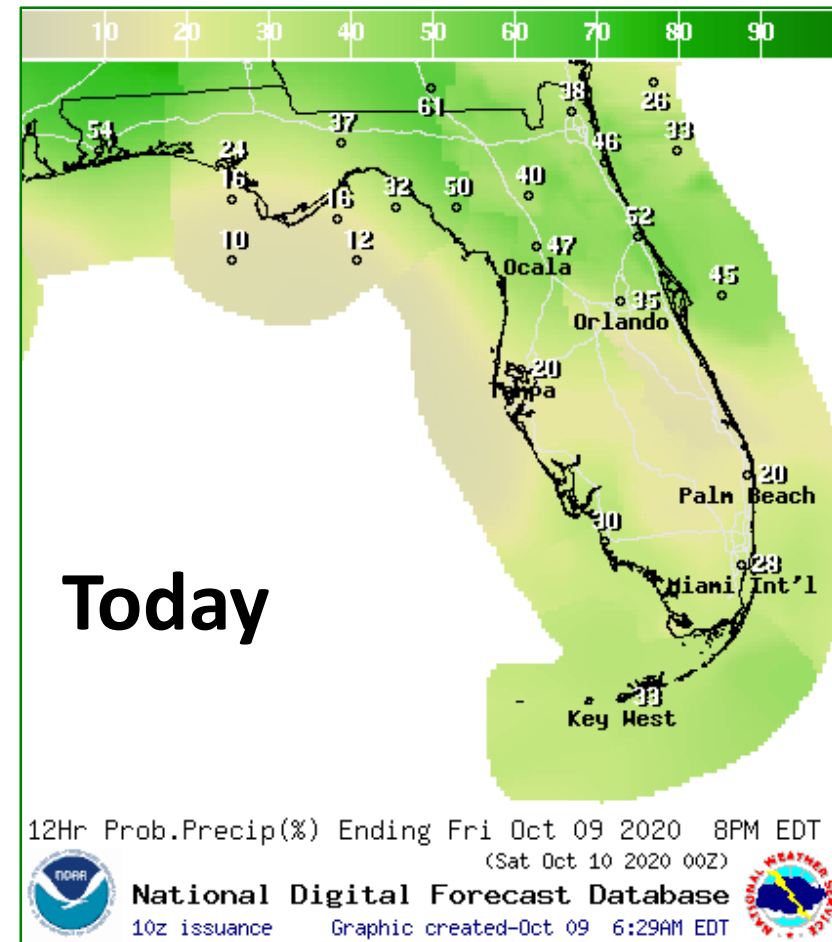


- Delta strengthened slightly last night and currently has winds around 120 mph (Category 3).
- The center of Delta is located about 160 miles south of Cameron, LA, moving north at 12 mph.
- Some slow weakening is forecast, but Delta will still remain a powerful Category 2 (possibly low-end Category 3) Hurricane upon landfall.
- Southwestern Louisiana remains very vulnerable due to impacts from Hurricane Laura in late August.
- Delta's wind field has grown. Hurricane-force winds extend out 40 miles from the center, and tropical-storm-force winds extend out 160 miles from the center.





# Rain Chances Next 3 Days



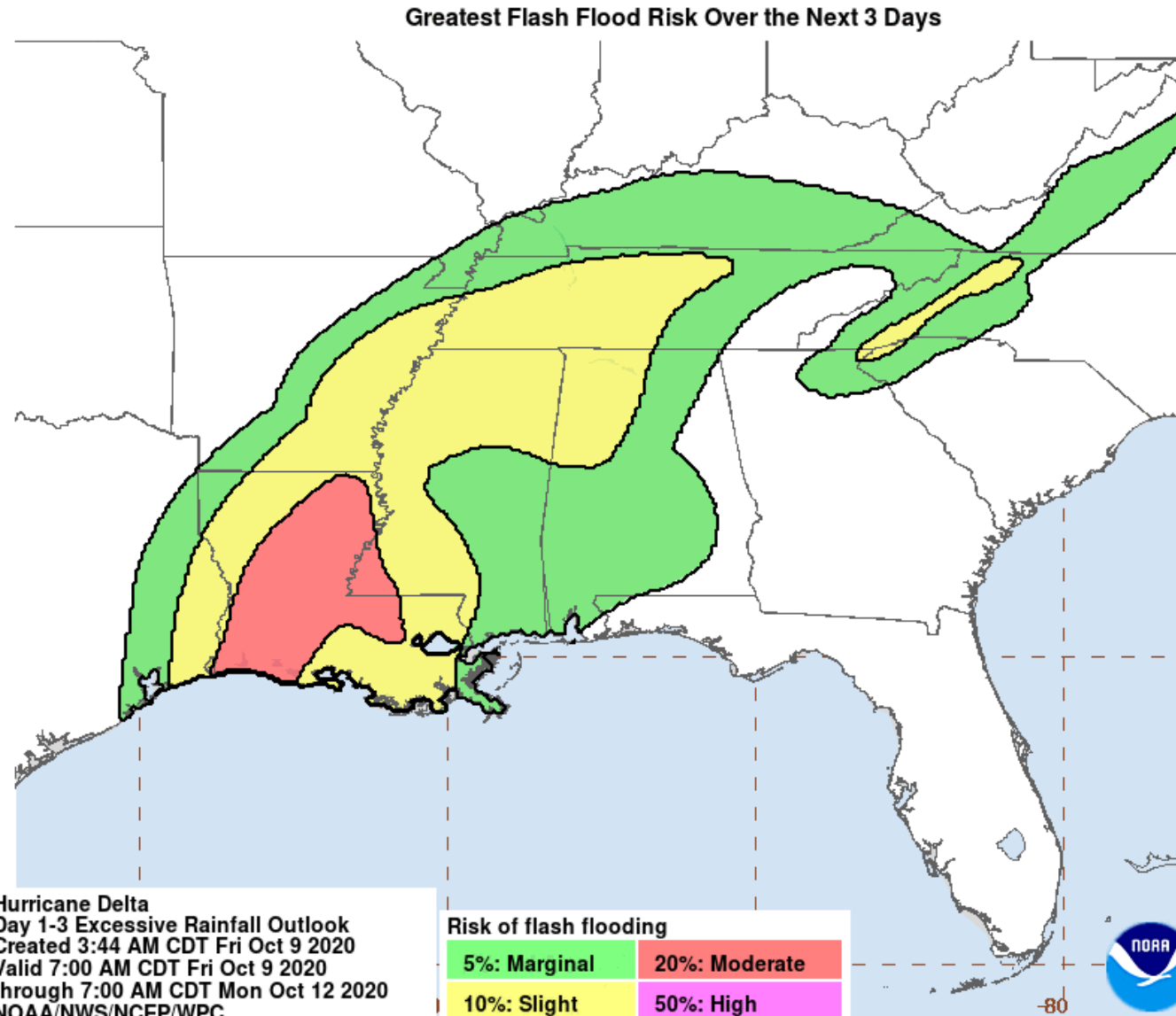
**Rain chances remain elevated across the state as tropical moisture from Hurricane Delta remains in place.**



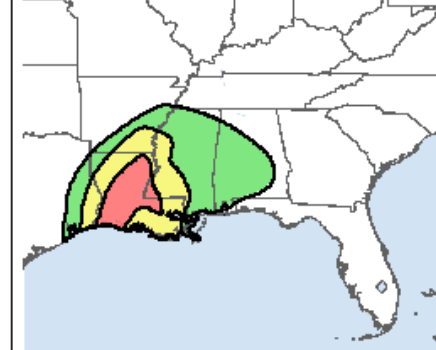
# Flash Flood Outlook

## 3-Day Event Summary

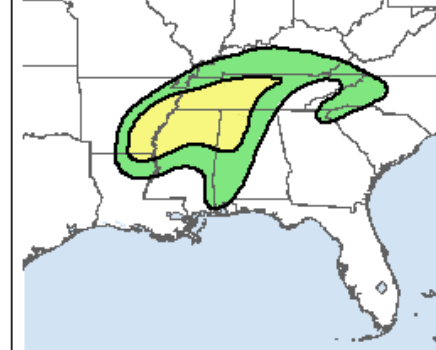
An isolated flash flood cannot be ruled out in the far western Panhandle. The greater flash flood threat will be near the path of Delta to our northwest.



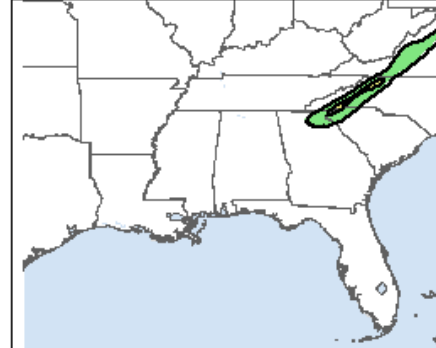
Day 1 Through Saturday morning



Day 2 Through Sunday morning



Day 3 Through Monday morning



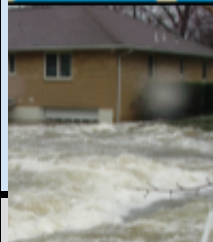




# Flash Flood Risk Categories

## Understanding the Weather Prediction Center Risk Scale

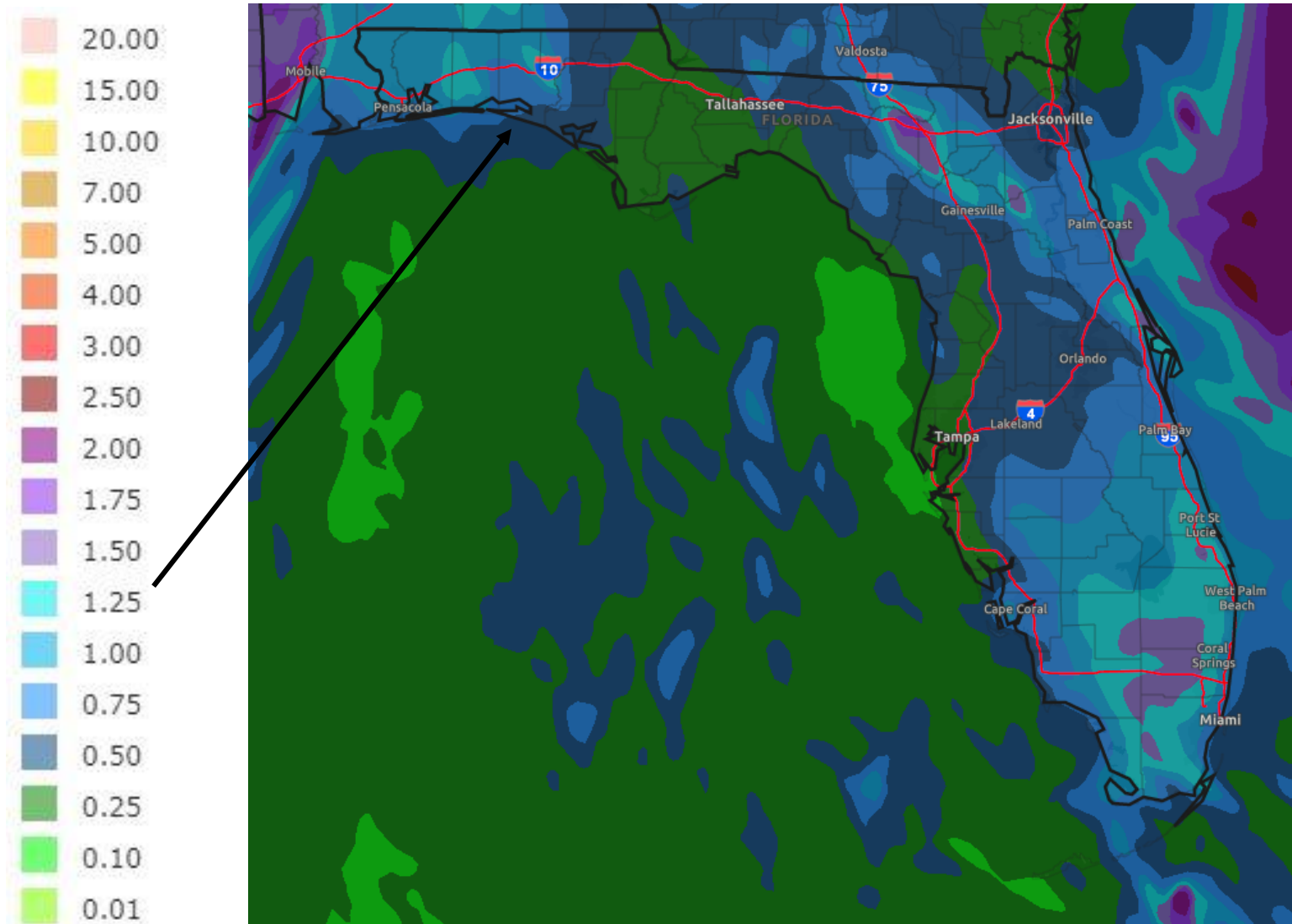
### Understanding WPC Excessive Rainfall Risk Categories

<div>No Area/Label</div> <div>Flash floods are generally not expected.</div> <div><a href="http://www.wpc.ncep.noaa.gov">www.wpc.ncep.noaa.gov</a> @NWSWPC</div>	<div>MARGINAL (MRGL)</div> <div>Isolated flash floods possible</div> <div>Localized and primarily affecting places that can experience rapid runoff with heavy rainfall.</div>	<div>SLIGHT (SLGT)</div> <div>Scattered flash floods possible</div> <div>Mainly localized. Most vulnerable are urban areas, roads, small streams and washes. Isolated significant flash floods possible.</div>	<div>MODERATE (MDT)</div> <div>Numerous flash floods likely</div> <div>Numerous flash flooding events with significant events possible. Many streams may flood, potentially affecting larger rivers.</div>	<div>HIGH (HIGH)</div> <div>Widespread flash floods expected</div> <div>Severe, widespread flash flooding. Areas that don't normally experience flash flooding, could. Lives and property in greater danger.</div>
<div>Flash flooding near me?</div> <div>Flash Flooding</div> <div>NO Flash Flooding</div>				
<div> WEATHER PREDICTION CENTER</div>		<div>Risk of rainfall exceeding flash flood guidance within 25 miles of a point to the right of a line</div> <div>HIGH: &gt; 50%SLGT: 10%-20%</div> <div>MDT: 20%-50%MRGL: 5%-10%</div>		



# Rainfall Totals Next 5 Days

**\*Will Change Based on Track Shifts – Based on Perfect Forecast into LA – Locally Higher Totals\***



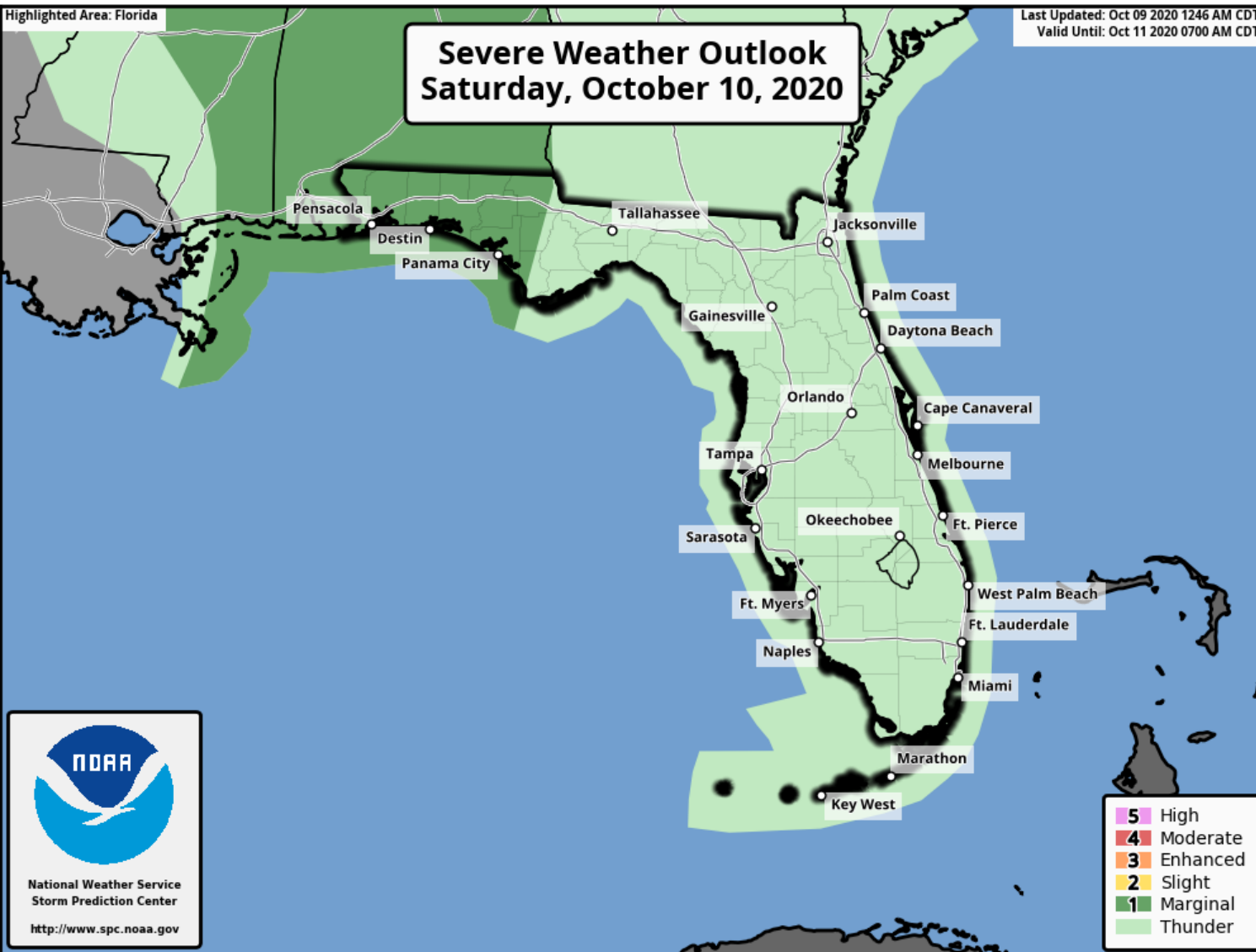
- Locally heavy rainfall in the Peninsula each afternoon.
- Heavy rainfall is possible today-Saturday in the western Florida Panhandle as Delta makes landfall and moves inland across Mississippi and Alabama (1-2").





# Severe Weather Outlook for Saturday

From the Storm Prediction Center

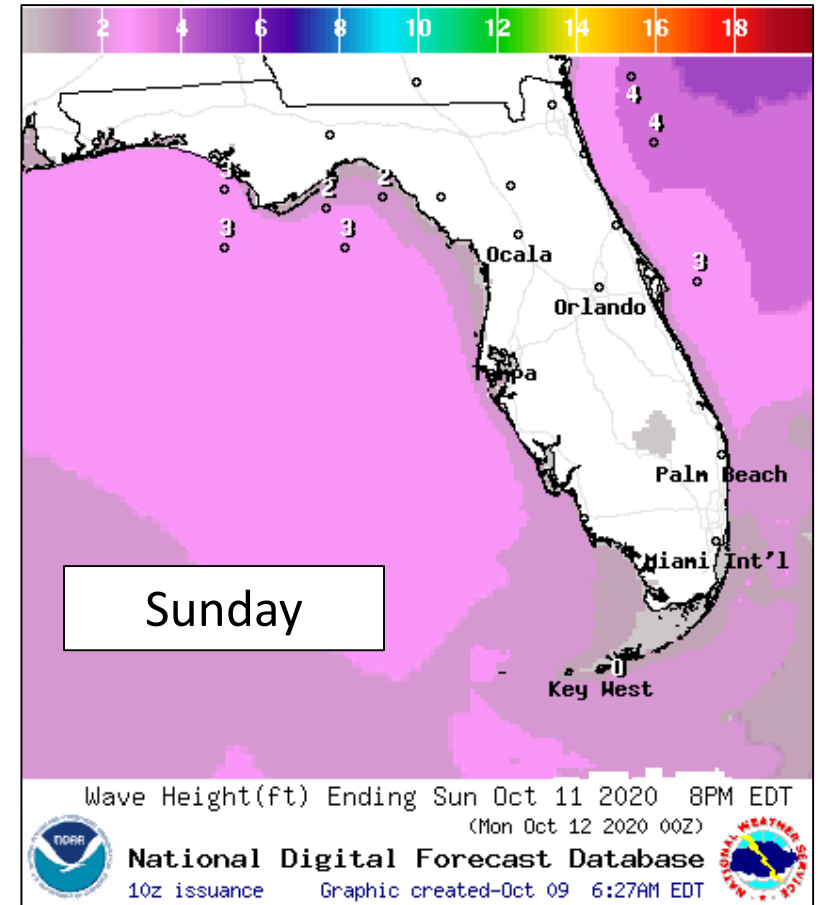
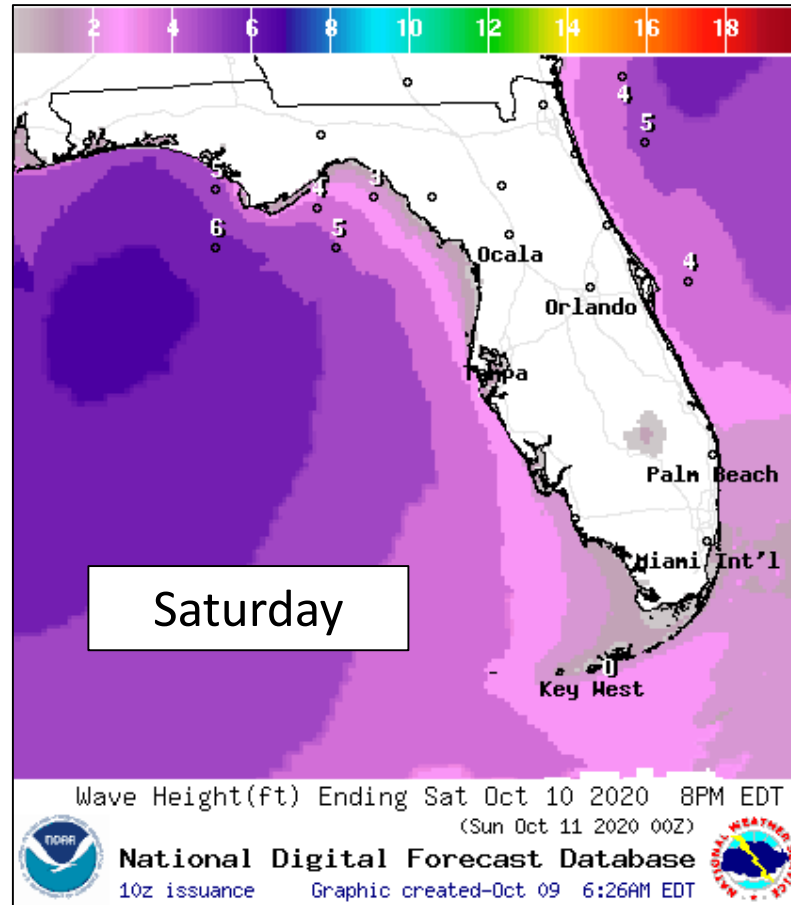
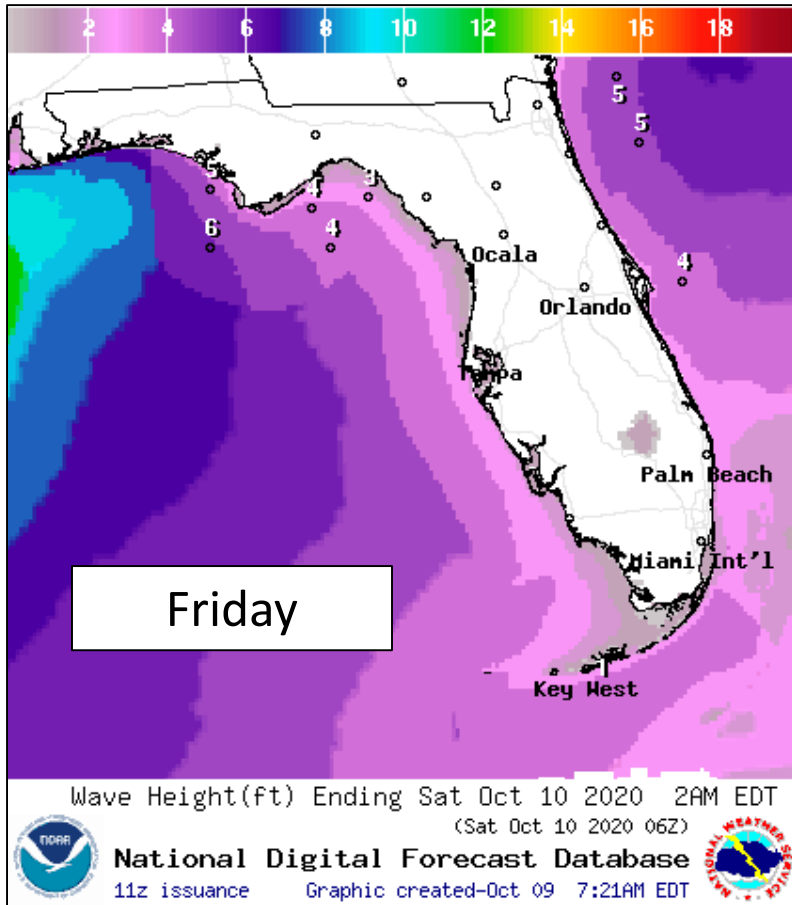


On Saturday, as Delta moves across northern Louisiana into Mississippi, outer bands will move across the Panhandle, bringing the threat for isolated tornado through the day.



# Forecast Wave Heights

## Late Week – Hurricane Delta



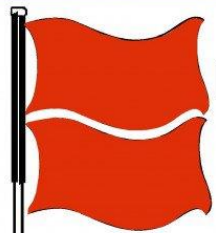
Wave heights will increase in the Gulf of Mexico starting tonight from Delta, reaching 6-9' in the Panhandle this weekend. High surf will create beach erosion and minor coastal flooding, particularly in locations that experienced significant beach/dune damage from Hurricane Sally a few weeks ago. Swells will also impact the West Coast this weekend.



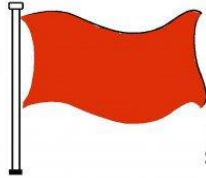
# Rip Current Outlook

Today

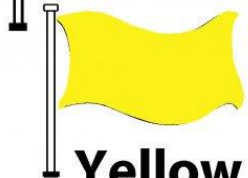
## BEACH FLAG WARNING SYSTEM



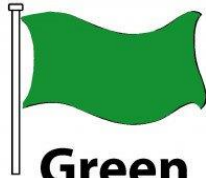
**Double Red**  
Water Closed to  
Public Use



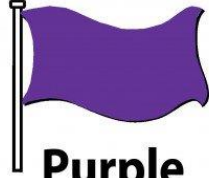
**Red**  
High Hazard  
(rough conditions,  
such as strong surf  
and or currents)



**Yellow**  
Medium Hazard  
(light surf and or  
currents)

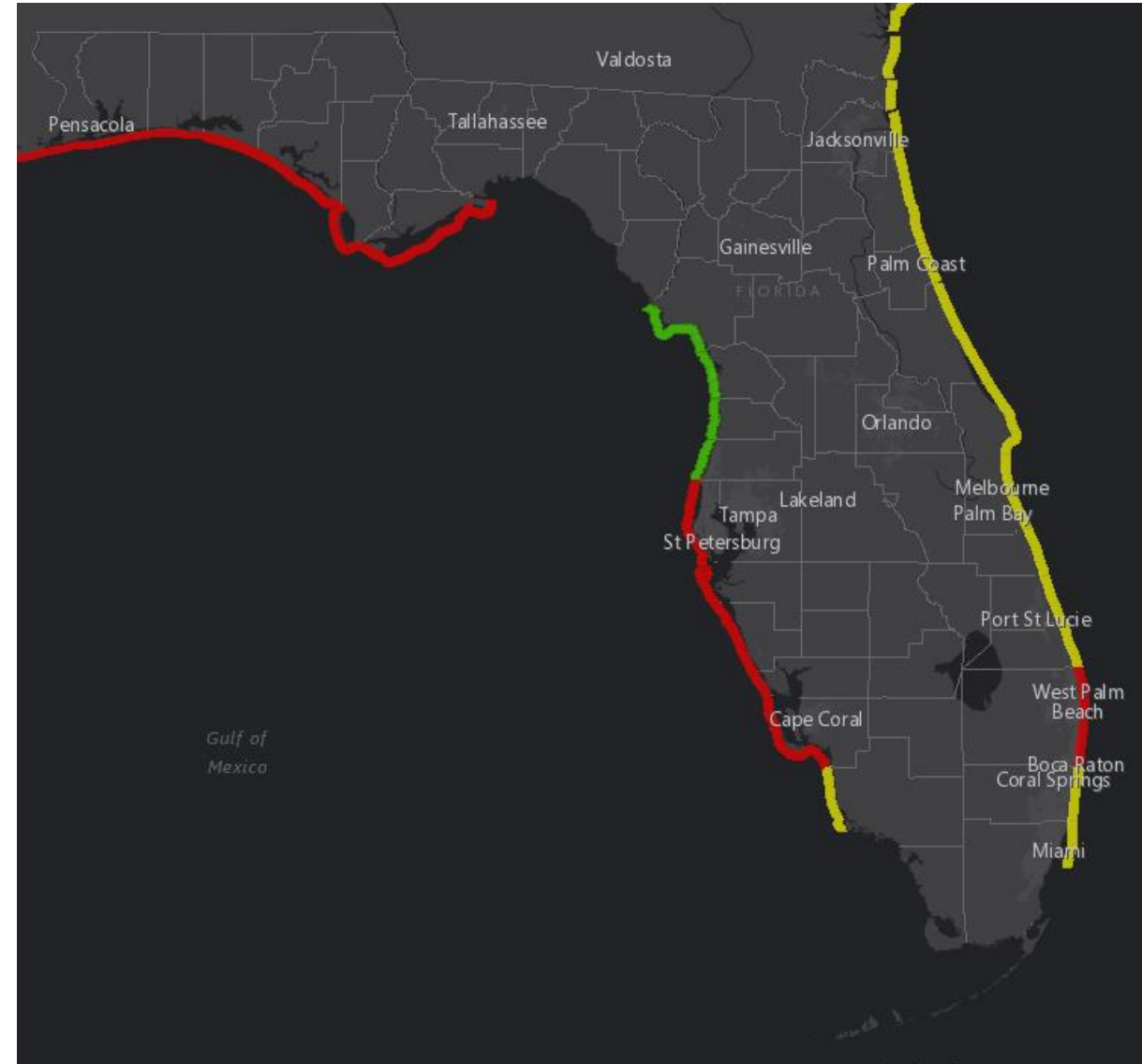


**Green**  
Low Hazard  
(calm conditions)



**Purple**  
Marine Pest  
(jellyfish, stingrays  
& dangerous fish)

Swells from Delta along the Gulf Coast and breezy northeast winds along the East Coast will elevate the rip current risk this week.







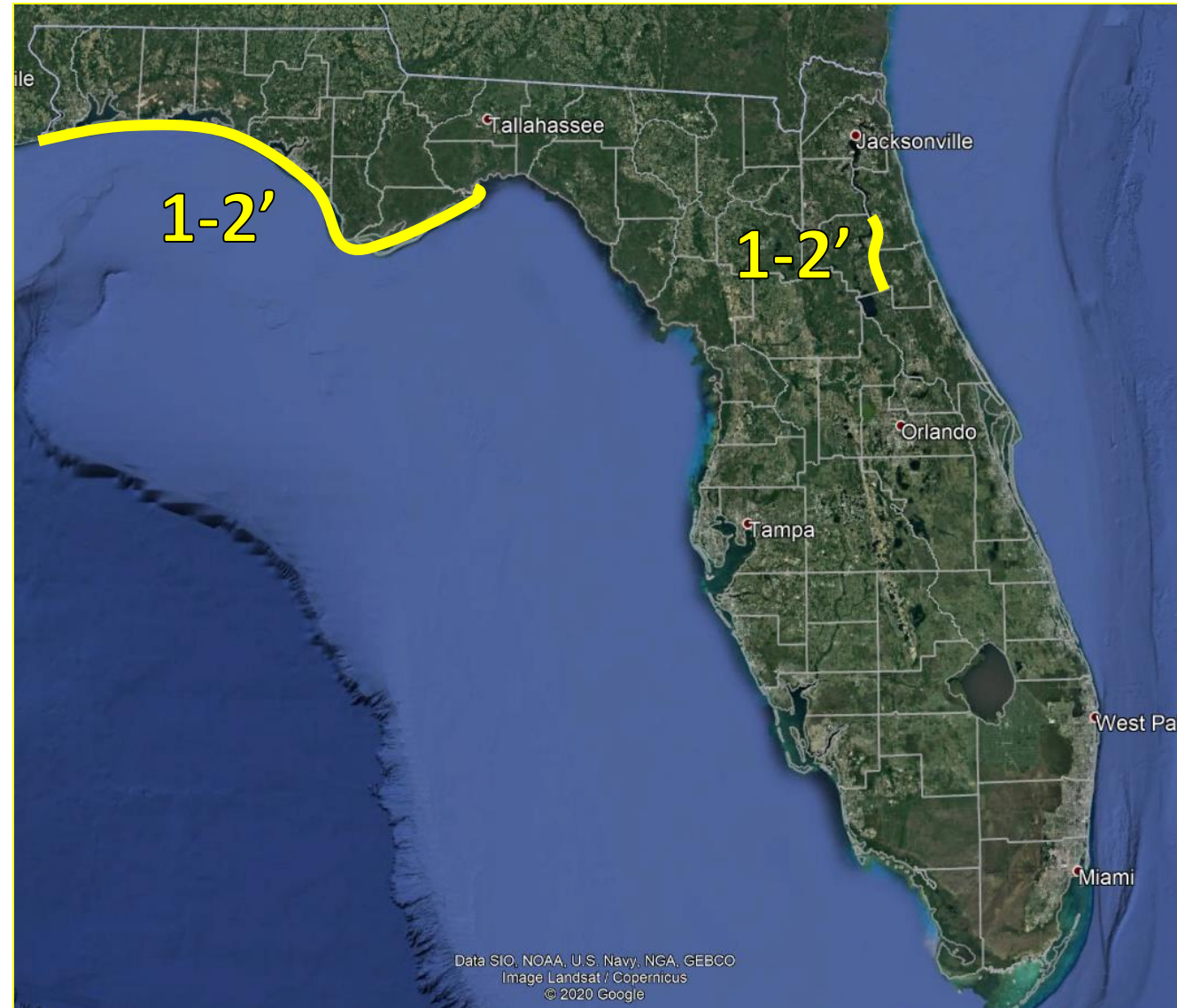
# Storm Surge/Coastal Flooding

## This Weekend

South to southeast winds from Hurricane Delta will result in elevated tides along the Panhandle and western Big Bend coast. Tides have been running about 1-1.5' above normal, but up to 2' cannot be ruled out.

The 1-2' of coastal flooding along the St. Johns River is residual flooding from earlier this week.

**Coastal Flood Advisories are in effect Putnam and Flagler Counties along the St. Johns River.**

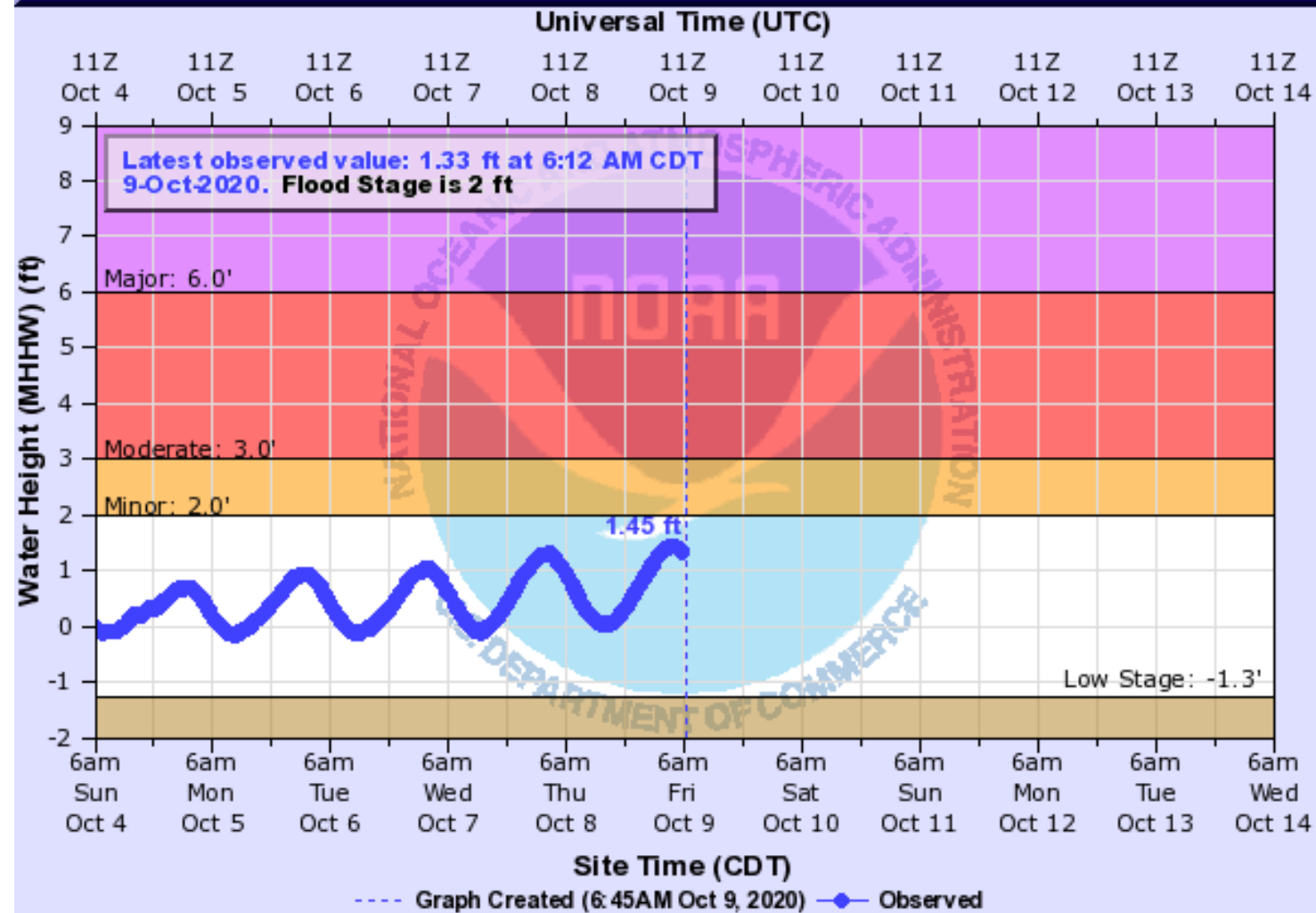




# Gulf of Mexico at Pensacola

[Hydrograph Link](#)

## GULF OF MEXICO TIDE GAUGE NEAR PENSACOLA (IN MHHW)

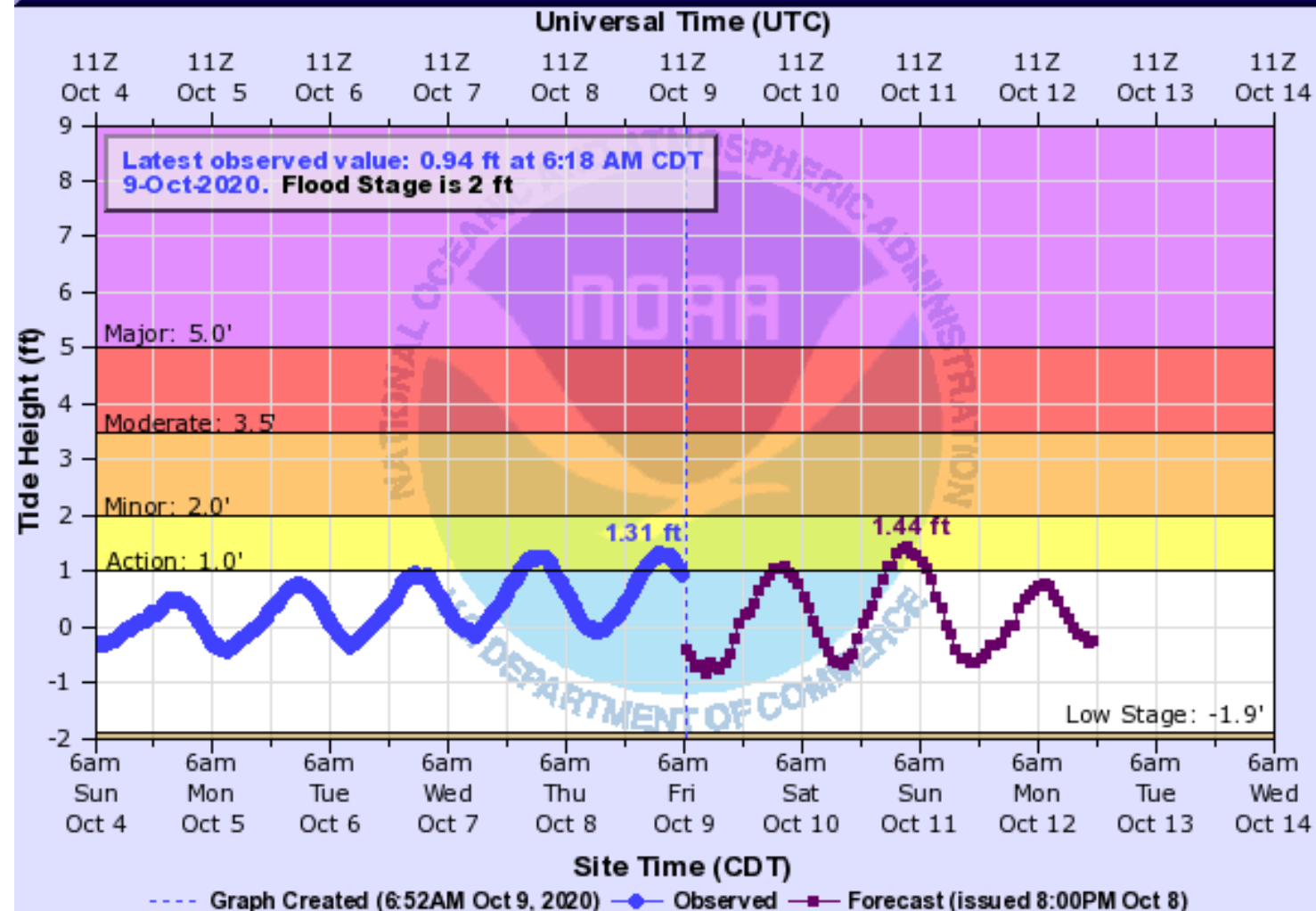




# Gulf of Mexico at Panama City

[Hydrograph Link](#)

## GULF OF MEXICO TIDE GAUGE AT PANAMA CITY (IN MHHW)



- 3 A lot west of West 4th Street begins to flood near the marina. East Beach Drive at Cherry Street becomes impassible. Low lying areas along the bayous start to flood, mainly in the backyards of homes. Flooding begins to affect backyards of homes west of Wildwood Rd north of US-98.
- 2.7 Flooding begins at St Andrew State Park and on the east end of Grand Lagoon near Alligator Point.
- 2 Water will begin to overwash the intersection of East Beach Drive and Cherry Street southeast of the marina. The parking lot at 4th Street and West Government floods.





# Tropical Weather Outlook

Possible Area of Development During the Next 5 Days ([LINK](#))



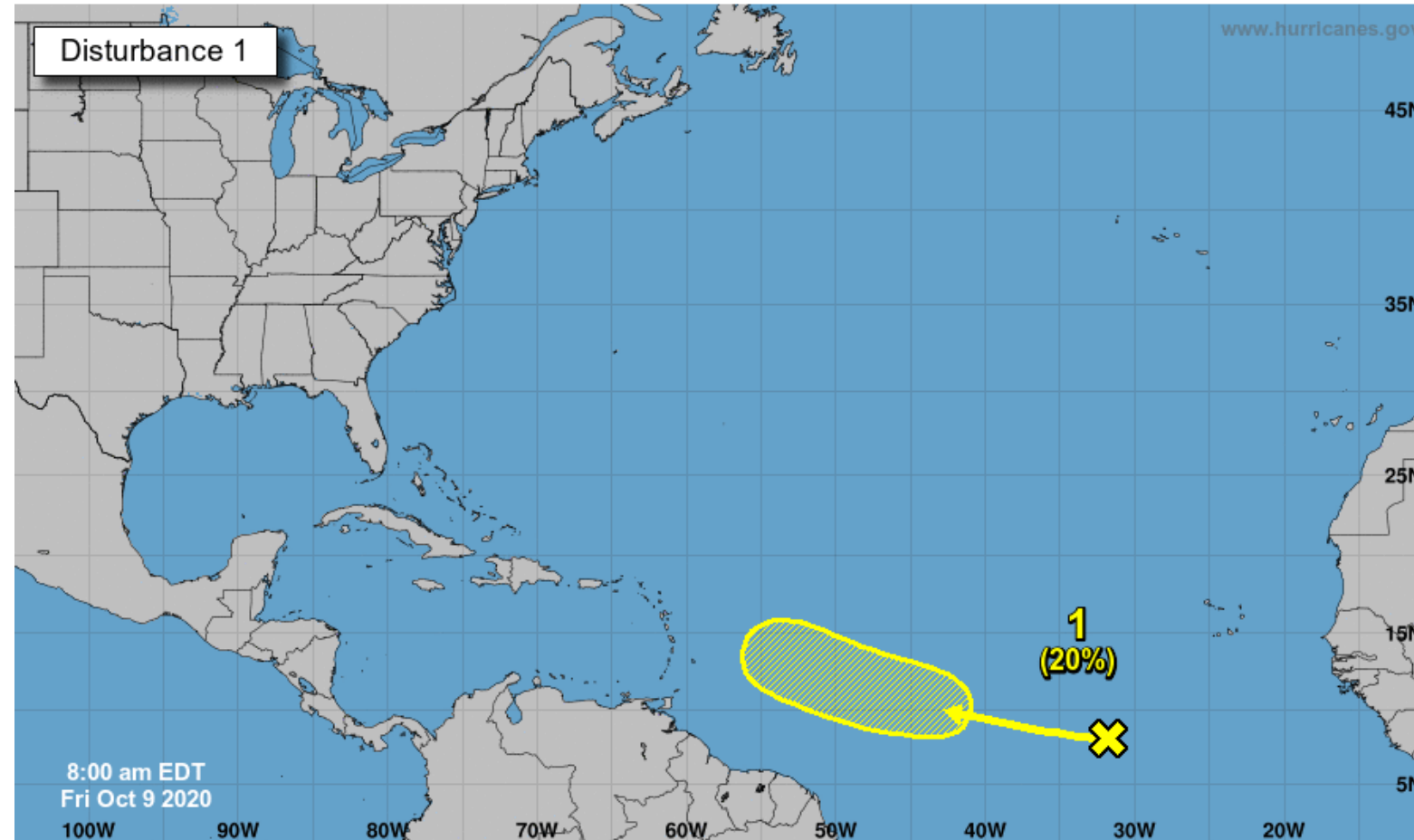
## Five-Day Graphical Tropical Weather Outlook

National Hurricane Center Miami, Florida



www.hurricanes.gov

Disturbance 1



Current Disturbances and Five-Day Cyclone Formation Chance:  
Tropical or Sub-Tropical Cyclone: ○ Depression ○ Storm ○ Hurricane  
Post-Tropical Cyclone or Remnants ○

✕ < 40% ✕ 40-60% ✕ > 60%

A tropical wave located several hundred miles southwest of the Cabo Verde Islands continues to produce disorganized showers and a few thunderstorms.

The wave is expected to move generally westward or west-northwestward at about 15 mph.

Environmental conditions could be conducive for some gradual development of the system this weekend or early next week while it is located over the tropical Atlantic, well east of the Lesser Antilles.

Upper-level winds are forecast to become unfavorable for further development by the middle of next week.

**This system does not need to be monitored for Florida impacts at this time, if at all.**

**\*Formation chance through 48 hrs...low...near 0%**

**\*Formation chance through 5 days...low...20%**



# Florida Outlook

## Florida Outlook:

- **The track forecast remains centered on Louisiana. While some impacts are possible in the Panhandle, they are not forecast to be significant.**
- Swells from Delta will result in a high rip current risk at Gulf Coast beaches into this weekend.
- High surf of 6-9' in the Panhandle may result in significant beach erosion and some overwash in locations with damaged dune lines from recent Hurricane Sally. High Surf Advisories are in effect for Escambia through Bay Counties..
- 1-2' of storm surge is possible along the Panhandle and Big Bend. Tides are already running about 1-1.5' above normal at some locations along the Panhandle and Big Bend.
- About 1-2" of rain is expected along the Panhandle, locally up to 3-4" possible in the heavier rain bands. This may result in an isolated flash flood threat if slow-moving or training storms occur.
- There is a chance for an isolated tornado or two over the Panhandle on Saturday. The Storm Prediction Center has outlined the Panhandle in a Marginal Risk for severe weather.
- Wind gusts of 20-30 mph cannot be ruled out along the western Panhandle coast. Higher gusts are possible in any rain bands.

The next briefing packet will be issued this afternoon with the 5PM advisory. For the latest information on the tropics, please visit the National Hurricane Center website at [www.hurricanes.gov](http://www.hurricanes.gov).



# TROPICAL UPDATE



Created by:

Cameron Young, Assistant State Meteorologist

[Cameron.Young@em.myflorida.com](mailto:Cameron.Young@em.myflorida.com)

State Meteorological Support Unit

Florida Division of Emergency Management

Users wishing to subscribe (approval pending) to this distribution list, register at:

[https://public.govdelivery.com/accounts/FLDEM/subscriber/new?topic\\_id=SERT\\_Met\\_Tropics](https://public.govdelivery.com/accounts/FLDEM/subscriber/new?topic_id=SERT_Met_Tropics).

Other reports available for subscription are available at:

<https://public.govdelivery.com/accounts/FLDEM/subscriber/new?preferences=true>