



# TROPICAL UPDATE



8:00 AM EDT

Thursday, October 8, 2020

Hurricane Delta

This update is intended for government and emergency response officials, and is provided for informational and situational awareness purposes only. Forecast conditions are subject to change based on a variety of environmental factors. For additional information, or for any life safety concerns with an active weather event please contact your County Emergency Management or Public Safety Office, local National Weather Service forecast office, or visit the National Hurricane Center website at [www.hurricanes.gov](http://www.hurricanes.gov).

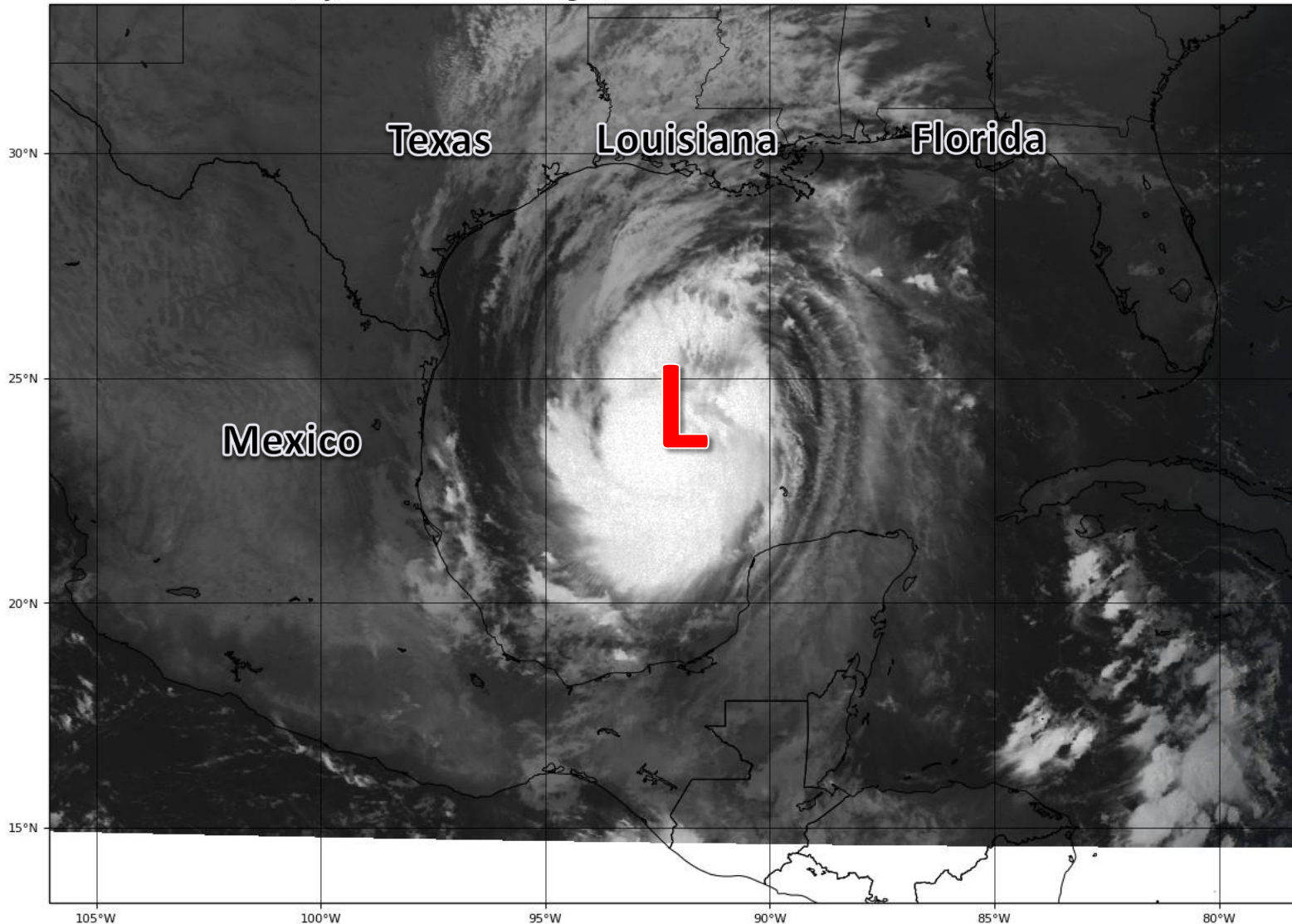


# Satellite Imagery

## Hurricane Delta – Gulf of Mexico

GOES-16 Natural Color (day) and Shortwave IR (night) at 11:22Z Oct 08, 2020

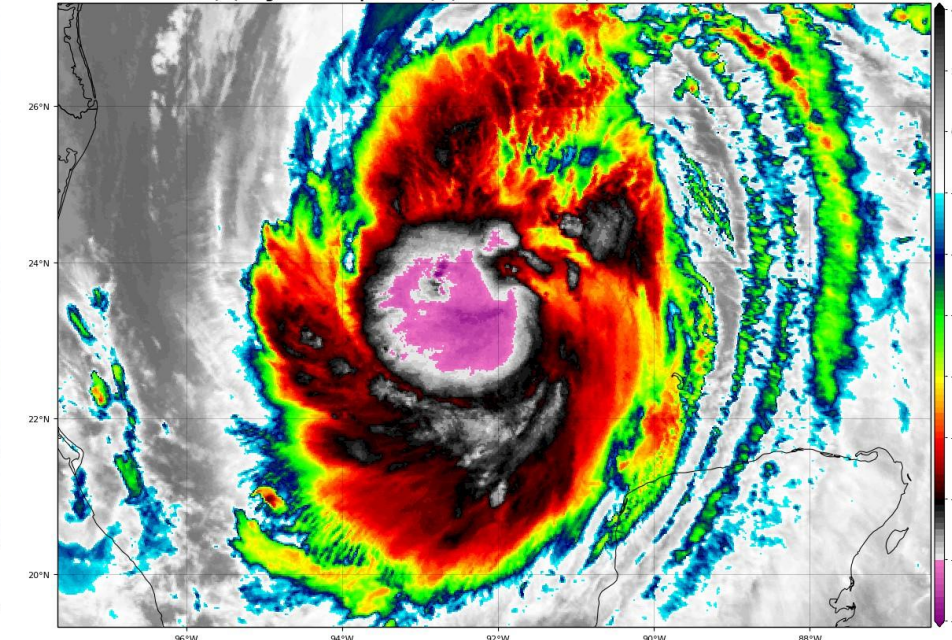
TROPICALTIDBITS.COM



Delta is once again a Category 2 hurricane, now located over the west-central Gulf of Mexico. Further strengthening is forecast, and Delta will likely become a major hurricane again today or tonight.

GOES-16 Channel 13 (IR) Brightness Temperature (°C) at 11:27Z Oct 08, 2020

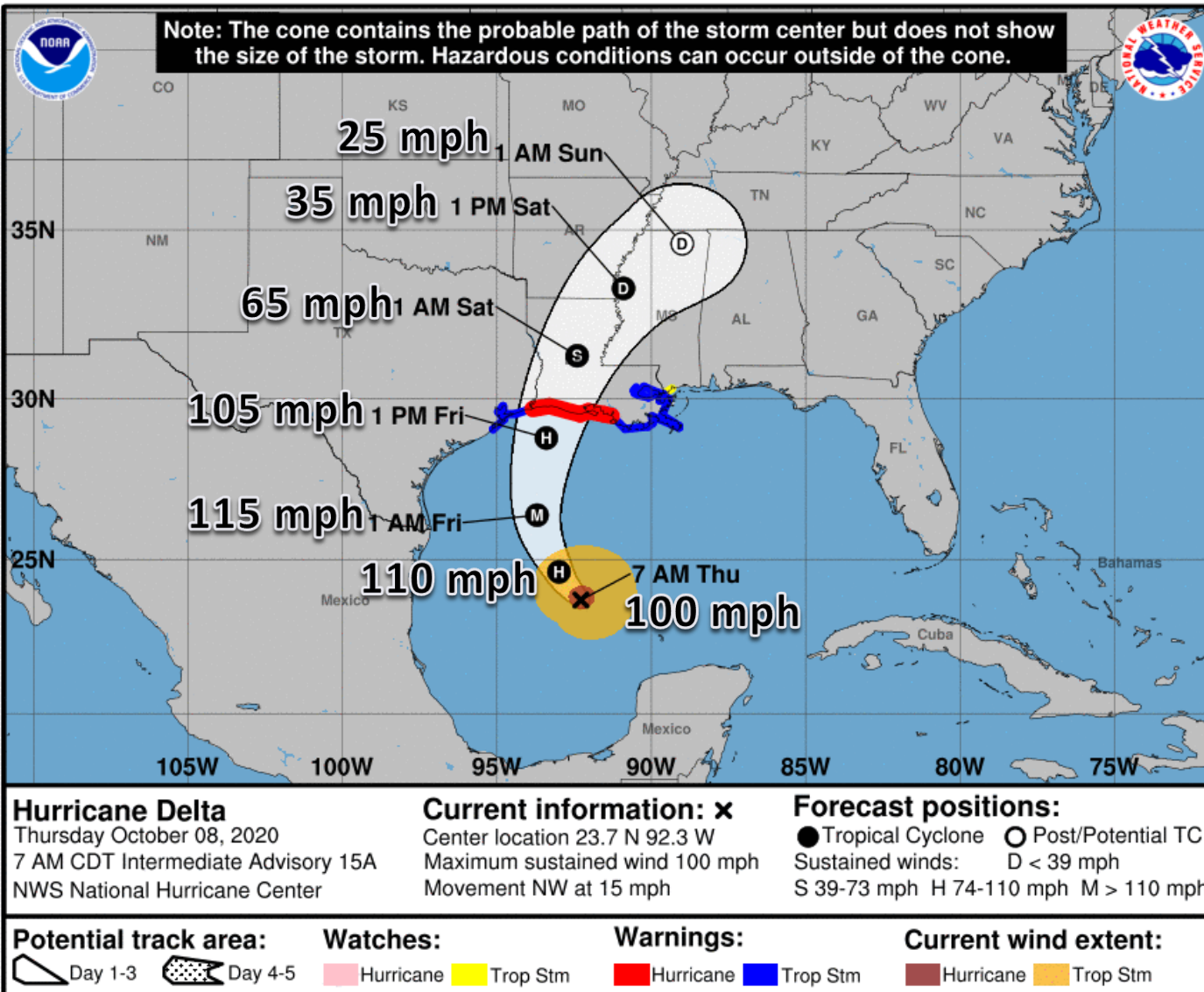
TROPICALTIDBITS.COM





# Official Forecast Track

## From the National Hurricane Center – Hurricane Delta



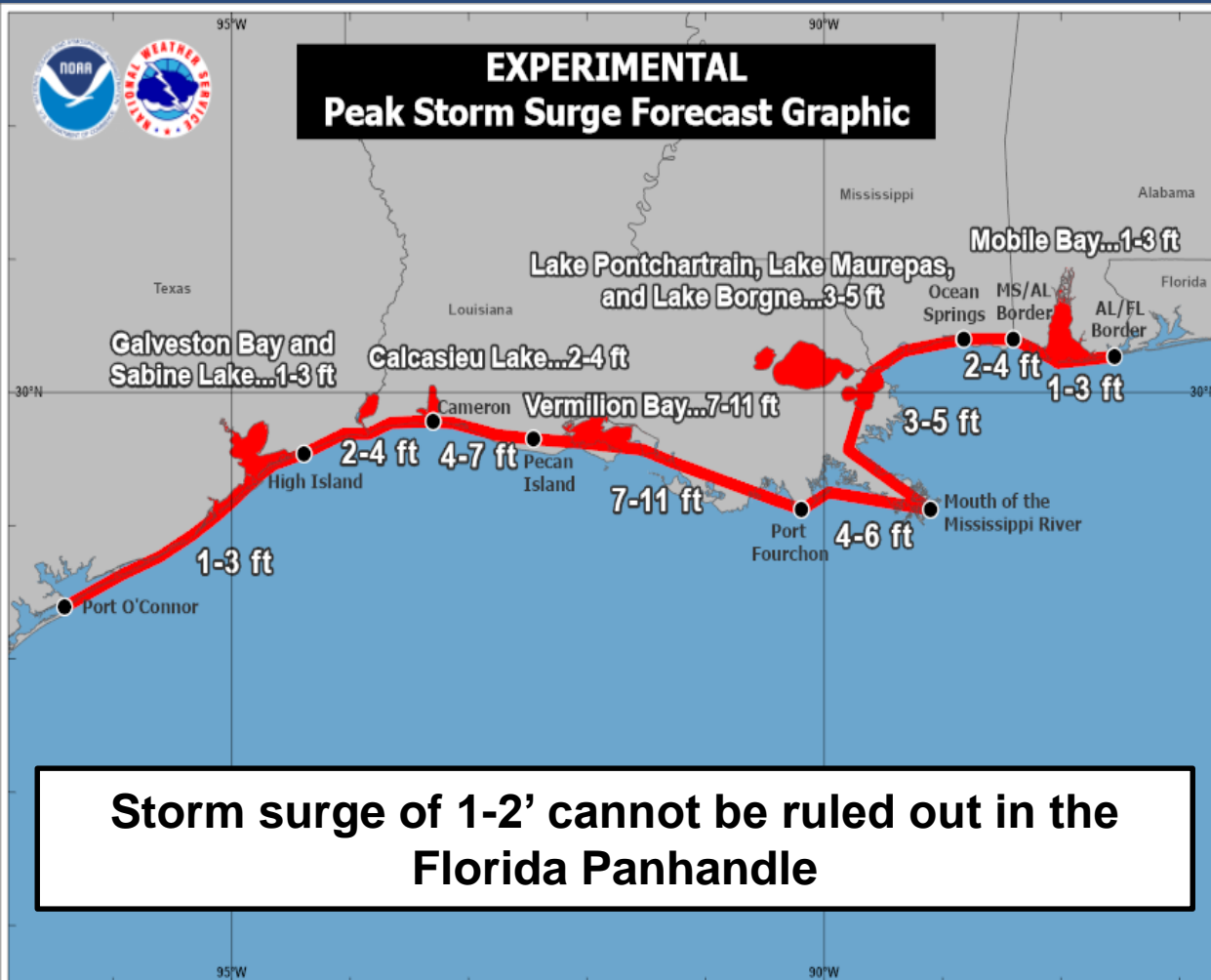
- Delta has re-strengthened overnight and is now a Category 2 Hurricane with maximum sustained winds near 100 mph.
- The center of Delta is located about 425 miles south of Cameron, LA, moving northwest at 15 mph.
- Delta is forecast to re-strengthen into a Category 3 Hurricane today or tonight, then weaken as it approaches the Louisiana coastline.
- However, due to impacts from Hurricane Laura in August, southwestern Louisiana is very vulnerable to any additional impacts.
- Delta's circulation remains rather small, with hurricane force winds only extending outward about 30 miles from the center. While the tropical storm force wind field is expected to expand, the hurricane force wind field may remain somewhat compact.





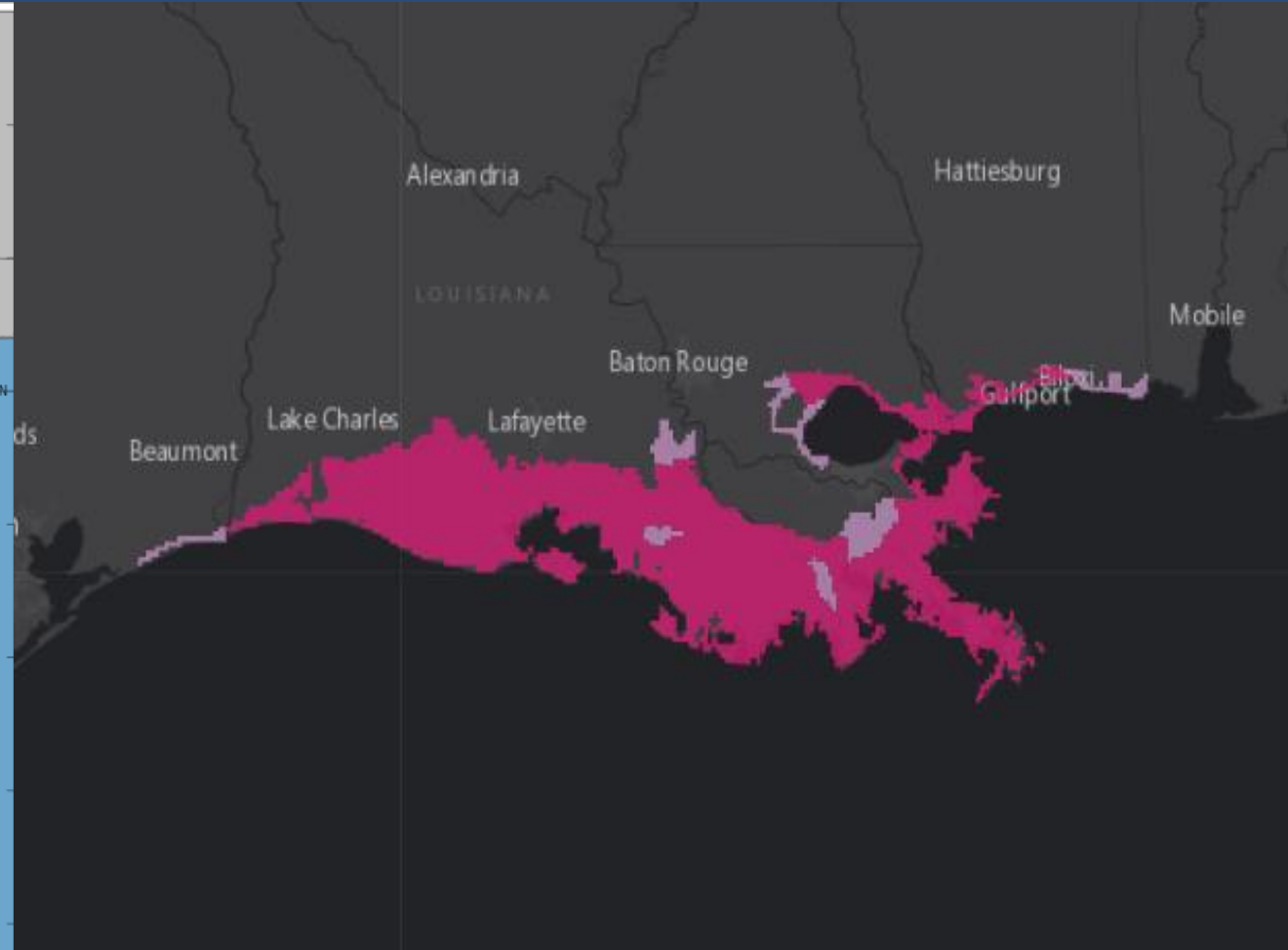
# Storm Surge Forecast, Watches & Warnings

## Hurricane Delta



Hurricane Delta  
Thursday October 08, 2020  
04 AM CDT Advisory 15  
NWS National Hurricane Center

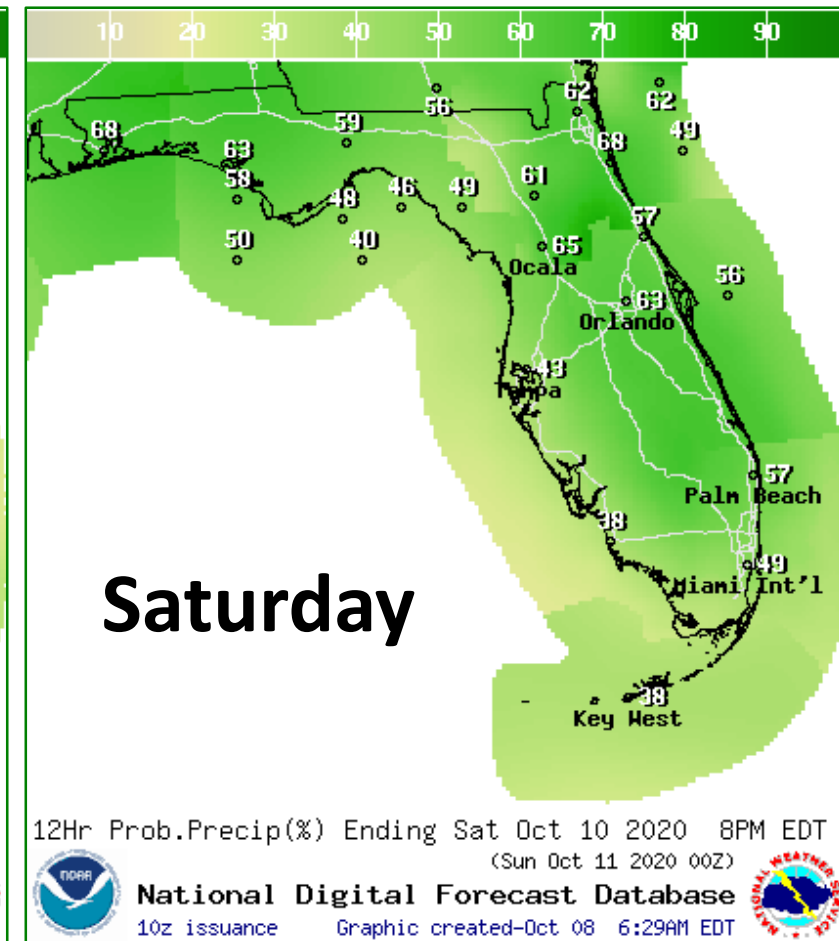
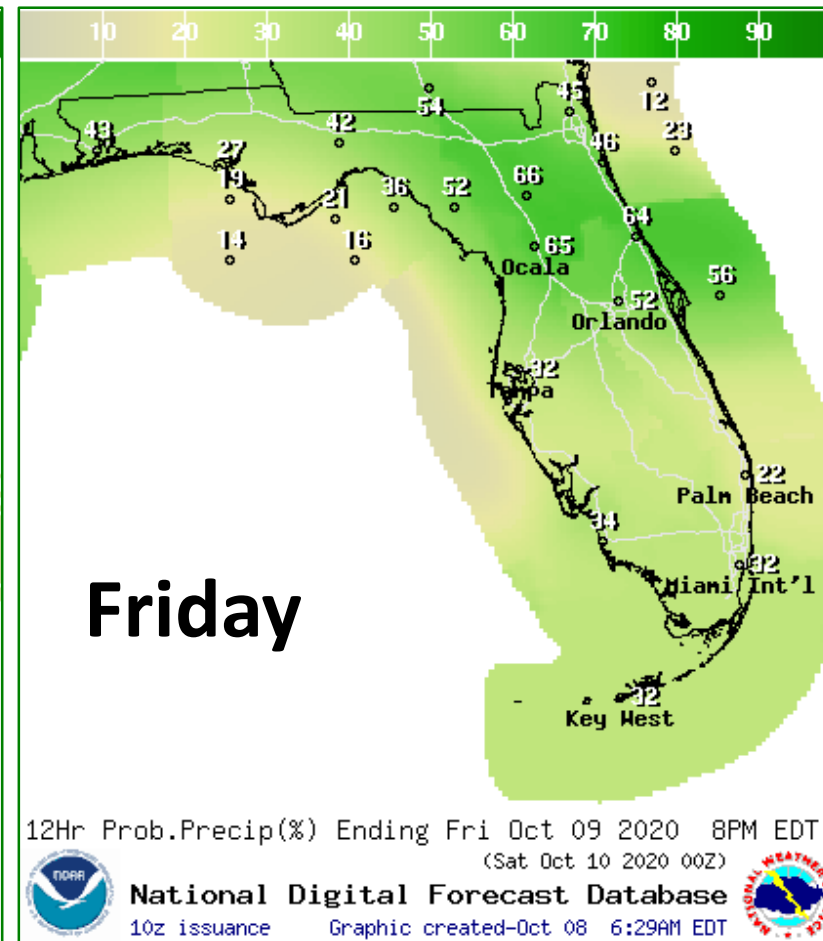
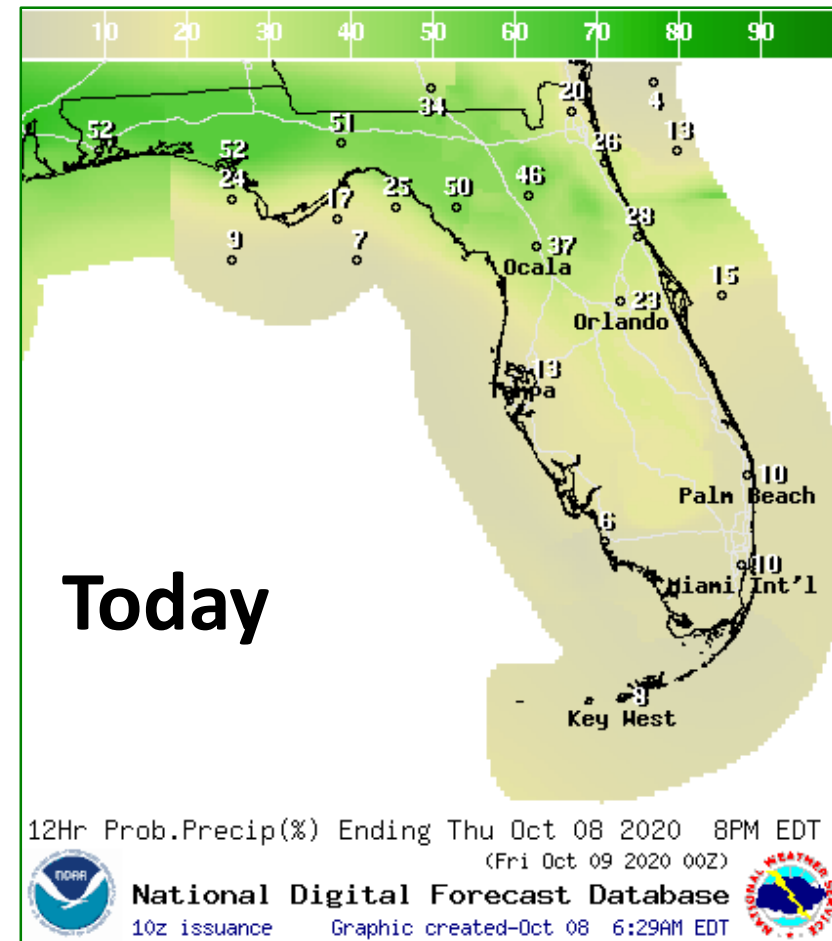
The combination of a dangerous storm surge and the tide will cause normally dry areas near the coast to be flooded by rising waters moving inland from the shoreline. The water could reach the following heights above ground somewhere within the indicated areas if the peak surge occurs at the time of high tide. The deepest water will occur along the immediate coast near the landfall location, where the surge will be accompanied by large and destructive waves. Surge-related flooding depends on the relative timing of the surge and the tidal cycle, and can vary greatly over short distances.



**Storm Surge Watch | Storm Surge Warning**  
**None for Florida**



# Rain Chances Next 3 Days



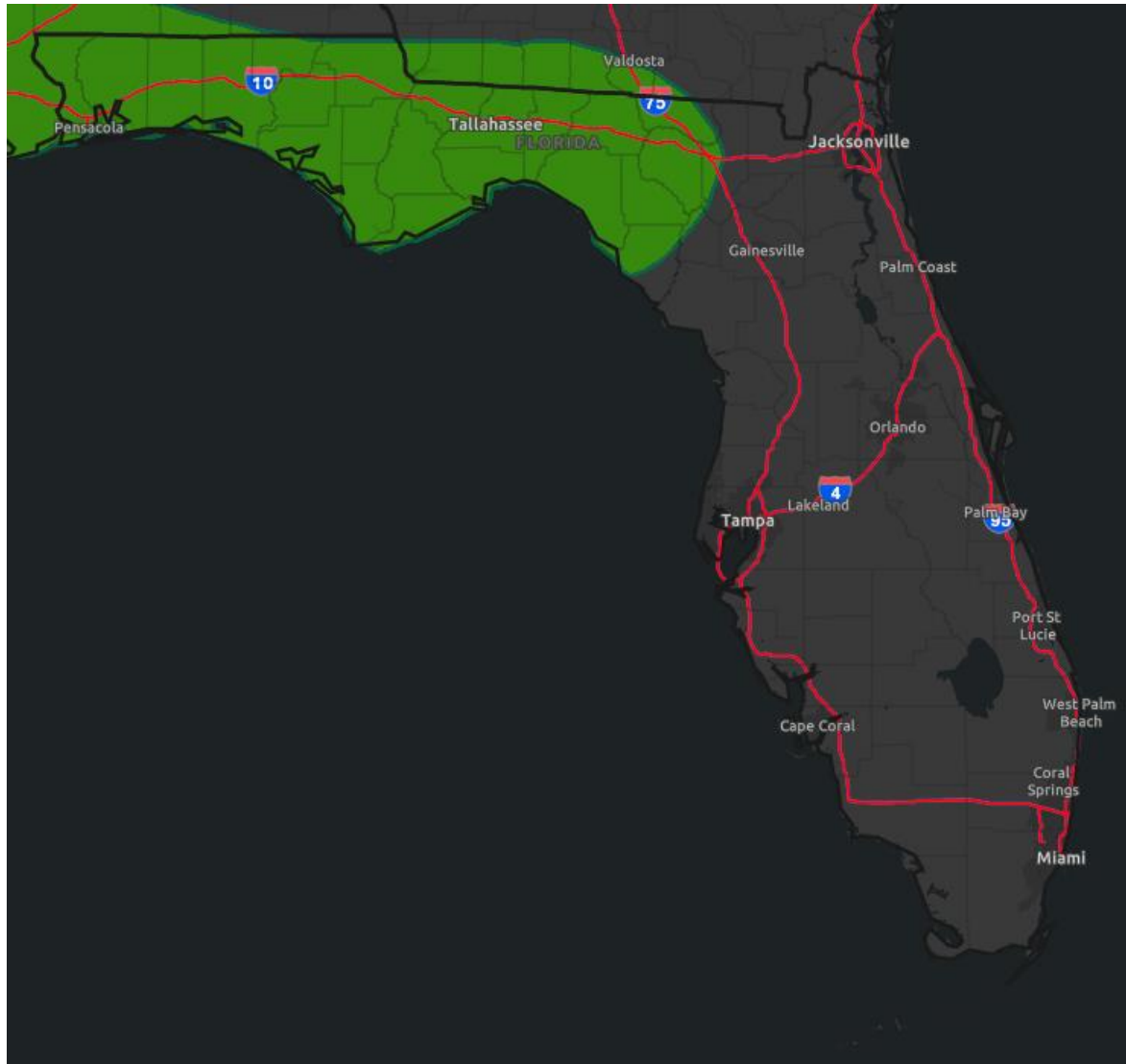
**Rain chances gradually increase across the state over the next few days as moisture associated with Hurricane Delta arrives**









# Flash Flood Outlook for Today

From the Weather Prediction Center ([LINK](#))

- Additional moisture from Delta could enhance showers and storms. Some of the heavier rain could produce localized street and urban flooding.



## Understanding WPC Excessive Rainfall Risk Categories

No Area/Label	MARGINAL (MRGL)	SLIGHT (SLGT)	MODERATE (MDT)	HIGH (HIGH)
Flash floods are generally not expected.	Isolated flash floods possible	Scattered flash floods possible	Numerous flash floods likely	Widespread flash floods expected
<a href="http://www.wpc.ncep.noaa.gov">@NWSWPC</a>	Localized and primarily affecting places that can experience rapid runoff with heavy rainfall.	Mainly localized. Most vulnerable are urban areas, roads, small streams and washes. Isolated significant flash floods possible.	Numerous flash flooding events with significant events possible. Many streams may flood, potentially affecting larger rivers.	Severe, widespread flash flooding. Areas that don't normally experience flash flooding, could. Lives and property in greater danger.
Flash flooding near me?	Flash Flooding	Flash Flooding	Flash Flooding	Flash Flooding
NO Flash Flooding	Flash Flooding	Flash Flooding	Flash Flooding	Flash Flooding
  WEATHER PREDICTION CENTER				

Risk of rainfall exceeding flash flood guidance within 25 miles of a point to the right of a line

**HIGH: > 50%**

**SLGT: 10%-20%**

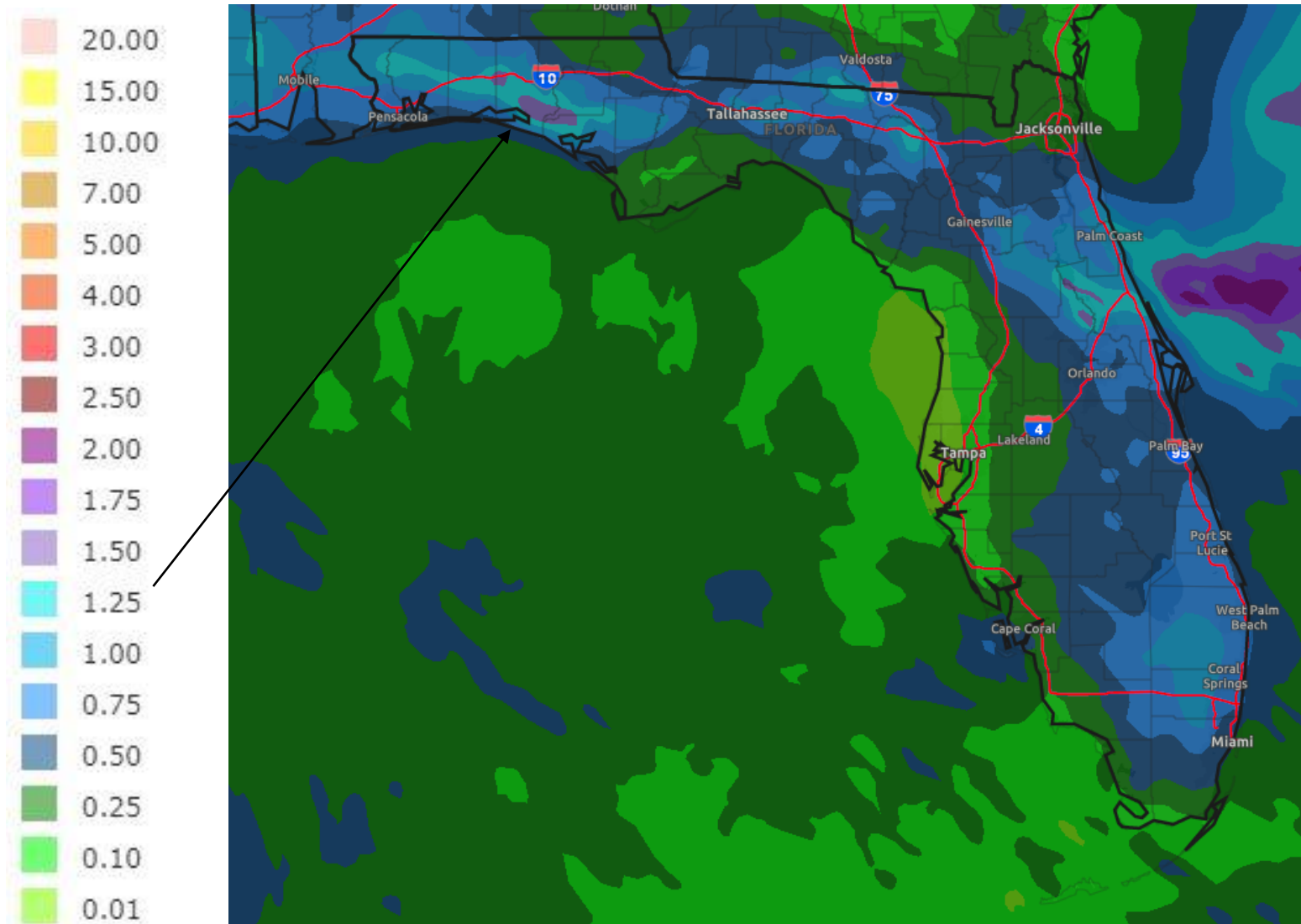
**MDT: 20%-50%**

**MRGL: 5%-10%**



# Rainfall Totals Next 5 Days

**\*Will Change Based on Track Shifts – Based on Perfect Forecast into LA – Locally Higher Totals\***



- Locally heavy rainfall in the Peninsula each afternoon.
- Heavy rainfall is possible today-Saturday in the western Florida Panhandle as Delta makes landfall and moves inland across Mississippi and Alabama (1-2").





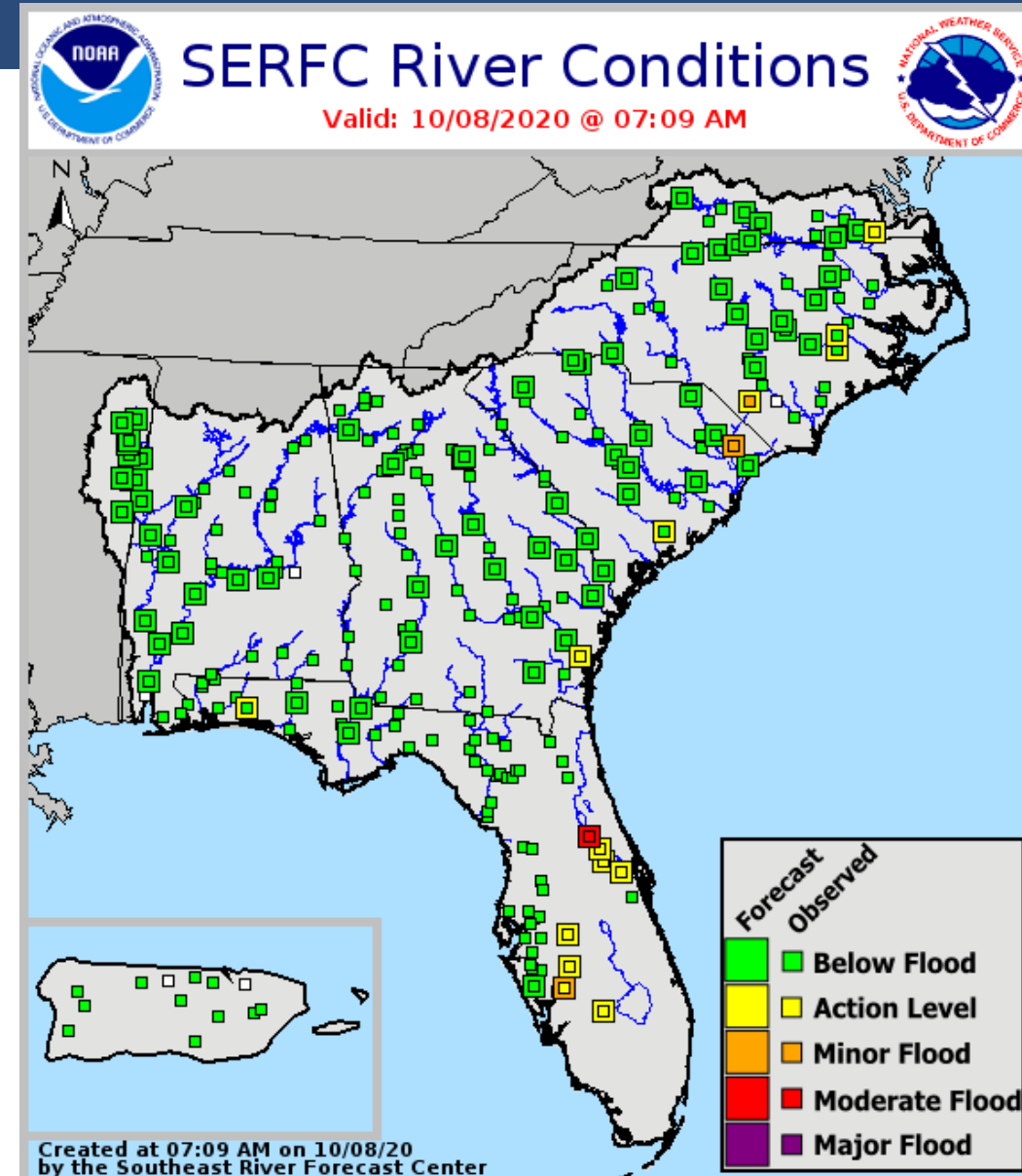
# Current & Forecast River Flooding

## Southeast River Forecast Center

### Rivers Currently in or Forecast to Reach Flood Stage:

- [St. Johns River at Astor](#) - **Moderate**
- [Peace River at Arcadia](#) - **Minor**
- **Minor coastal flooding** at high tide in Northeast Florida, including the tidal St. Johns River and its tributaries. Nuisance to minor coastal flooding is possible along the Panhandle & Big Bend the next couple days.
- River flooding is not expected in the Panhandle, but smaller creeks or rivers could see rises if heavy rainfall occurs.

More details on river levels available at the [Southeast River Forecast Center website](#).

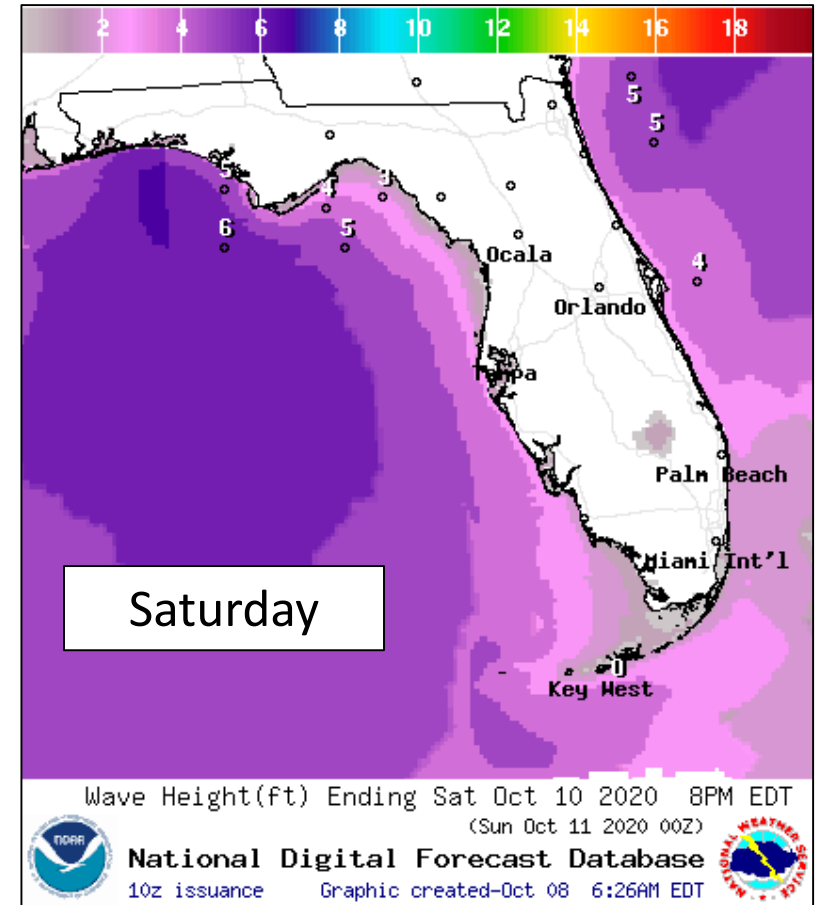
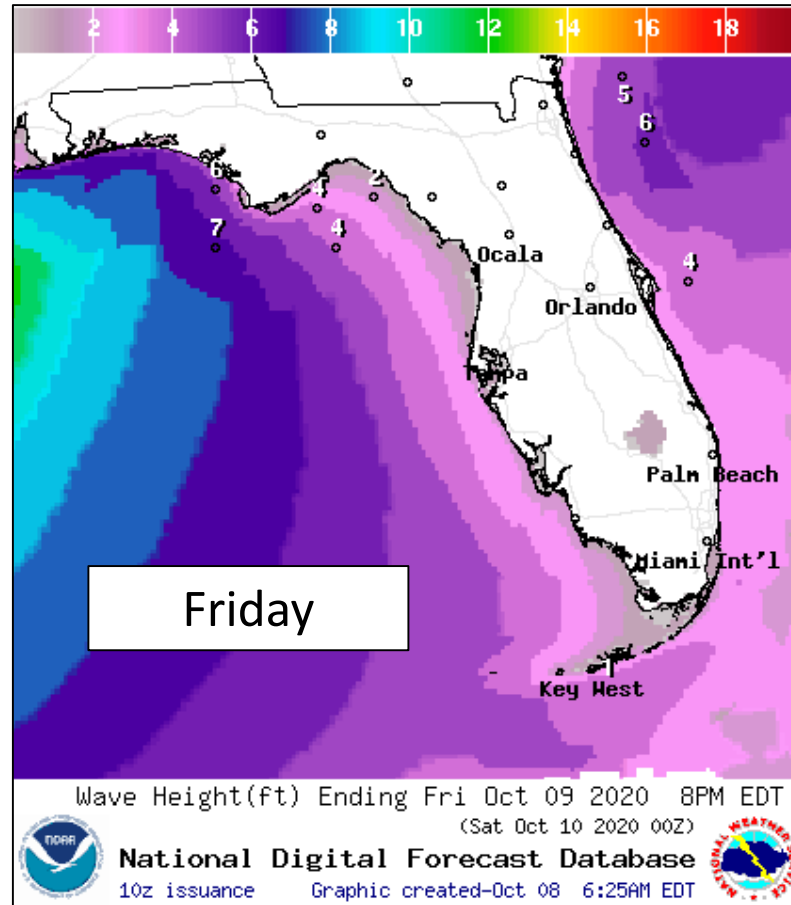
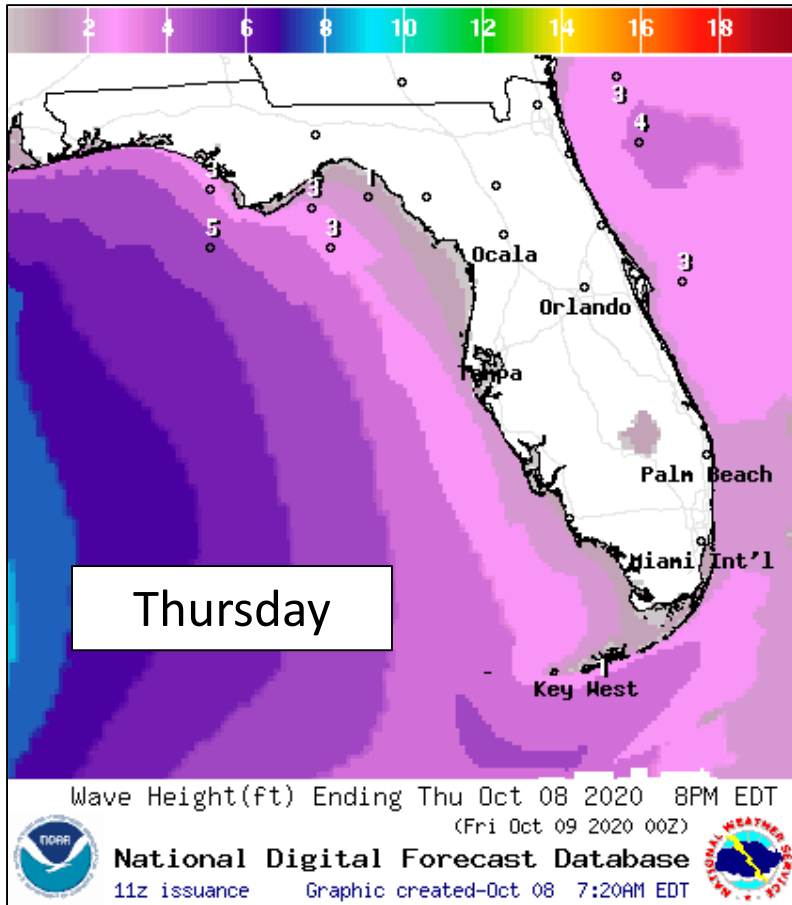






# Forecast Wave Heights

## Late Week – Hurricane Delta



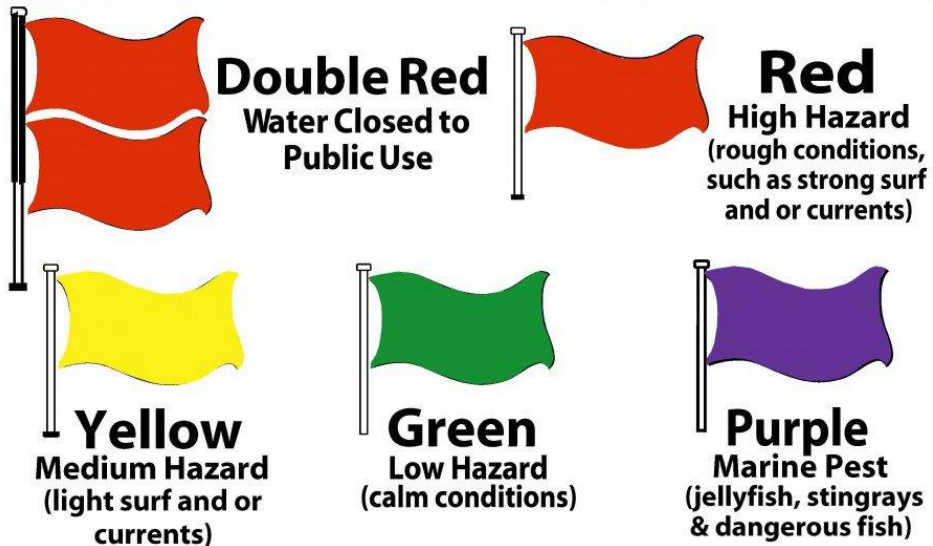
Wave heights will increase in the Gulf of Mexico starting on Thursday from Delta, reaching 6-9' in the Panhandle this weekend. High surf will create beach erosion and minor coastal flooding, particularly in locations that experienced significant beach/dune damage from Hurricane Sally a few weeks ago. Swells will also impact the West Coast this weekend.



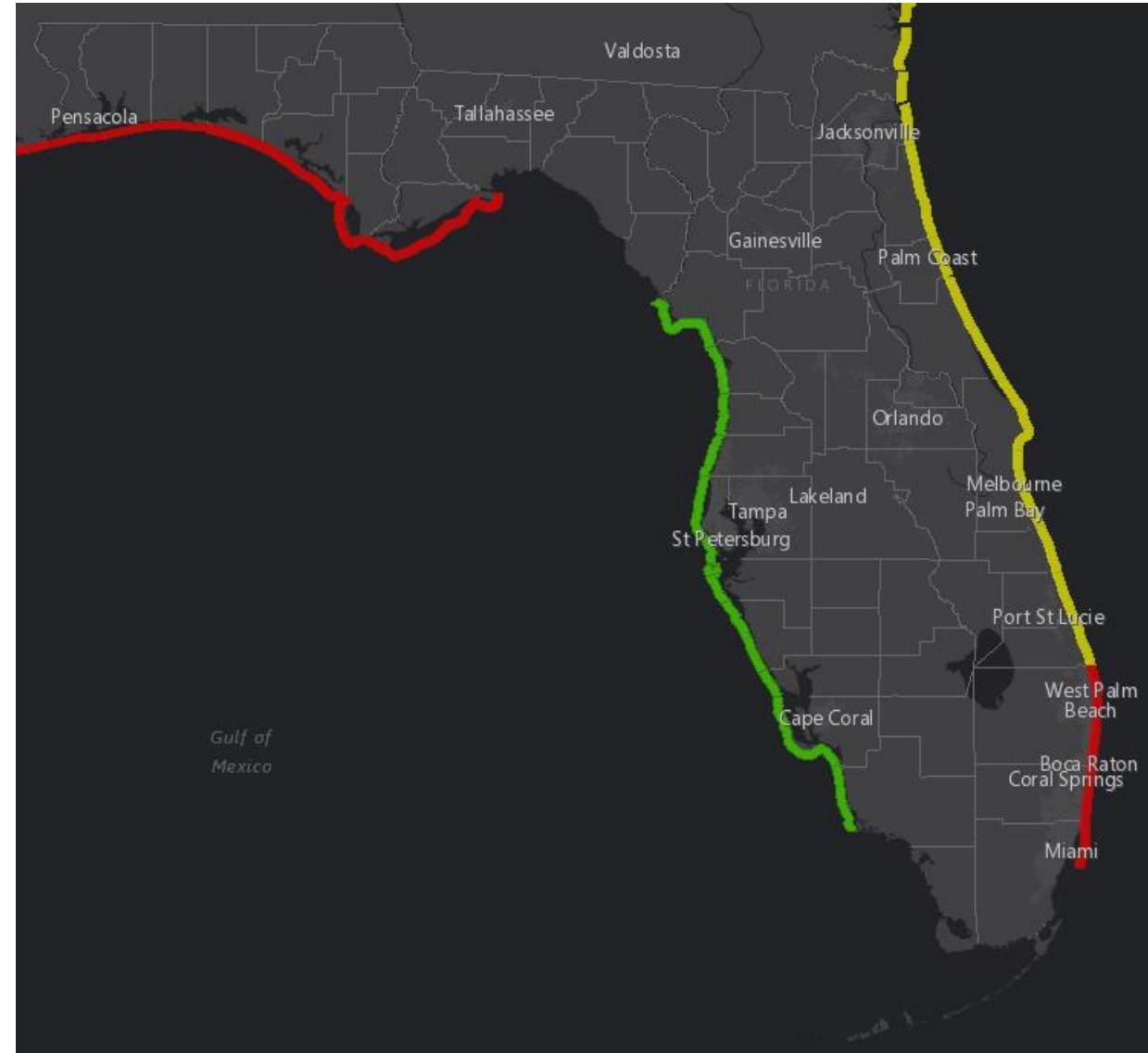
# Rip Current Outlook

Today

## BEACH FLAG WARNING SYSTEM



Swells from Delta along the Gulf Coast and breezy northeast winds along the East Coast will elevate the rip current risk this week.





# Tropical Weather Outlook

Possible Areas of Development During the Next 5 Days ([LINK](#))



## Five-Day Graphical Tropical Weather Outlook

National Hurricane Center Miami, Florida



Current Disturbances and Five-Day Cyclone Formation Chance: < 40% 40-60% > 60%

Tropical or Sub-Tropical Cyclone: Depression Storm Hurricane

Post-Tropical Cyclone or Remnants





# Florida Outlook

## Florida Outlook:

- **The track forecast remains centered on Louisiana. Significant impacts are not expected in the Panhandle.**
- A landfall in southeastern Louisiana would be needed to bring more significant impacts to the Panhandle, but a landfall in southwestern Louisiana, near where Hurricane Laura made landfall in August, appears more likely..
- Swells from Delta will result in a high rip current risk at Gulf Coast beaches into this weekend.
- High surf of 6-9' in the Panhandle may result in significant beach erosion and some overwash in locations with damaged dune lines from recent Hurricane Sally. High Surf Advisories are in effect for Escambia, Santa Rosa, and Okaloosa Counties.
- 1-2' of storm surge is possible along the Panhandle and Big Bend. Tides are already running about 1' above normal at some locations along the Panhandle and Big Bend.
- About 1-2" of rain is expected along the Panhandle, locally up to 3-4" possible in the heavier rain bands. This may result in an isolated flash flood threat if slow-moving or training storms occur.
- Isolated tornadoes are possible in the outer bands Friday night into Saturday. However, this threat has decreased slightly due to Delta being forecast to be farther north and west on Saturday.
- Wind gusts of 20-30 mph cannot be ruled out along the western Panhandle coast.

The next briefing packet will be issued this afternoon with the 5PM advisory. For the latest information on the tropics, please visit the National Hurricane Center website at [www.hurricanes.gov](http://www.hurricanes.gov).



# TROPICAL UPDATE



Created by:

Cameron Young, Assistant State Meteorologist

[Cameron.Young@em.myflorida.com](mailto:Cameron.Young@em.myflorida.com)

State Meteorological Support Unit

Florida Division of Emergency Management

Users wishing to subscribe (approval pending) to this distribution list, register at:

[https://public.govdelivery.com/accounts/FLDEM/subscriber/new?topic\\_id=SERT\\_Met\\_Tropics](https://public.govdelivery.com/accounts/FLDEM/subscriber/new?topic_id=SERT_Met_Tropics).

Other reports available for subscription are available at:

<https://public.govdelivery.com/accounts/FLDEM/subscriber/new?preferences=true>