



TROPICAL UPDATE



5:00 AM EDT

Wednesday, September 16, 2020

Hurricane Sally Update

No Other Systems a Threat at This Time

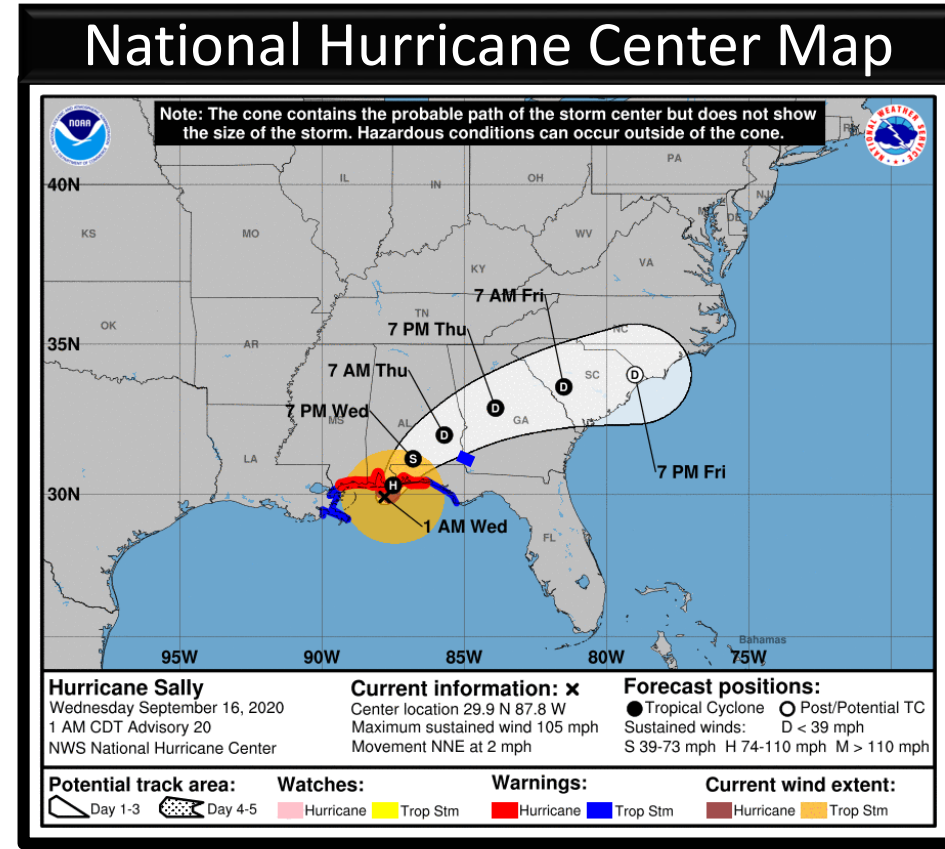
This update is intended for government and emergency response officials, and is provided for informational and situational awareness purposes only. Forecast conditions are subject to change based on a variety of environmental factors. For additional information, or for any life safety concerns with an active weather event please contact your County Emergency Management or Public Safety Office, local National Weather Service forecast office, or visit the National Hurricane Center website at www.hurricanes.gov.



Hurricane Sally

5 AM ET Tuesday: Florida Threats & Changes Since Last Packet

	MINIMAL	Low	MODERATE	HIGH	EXTREME
WINDS					
STORM SURGE					
FLASH FLOODING					
TORNADOES					
	Low		MODERATE		
RIP CURRENTS					



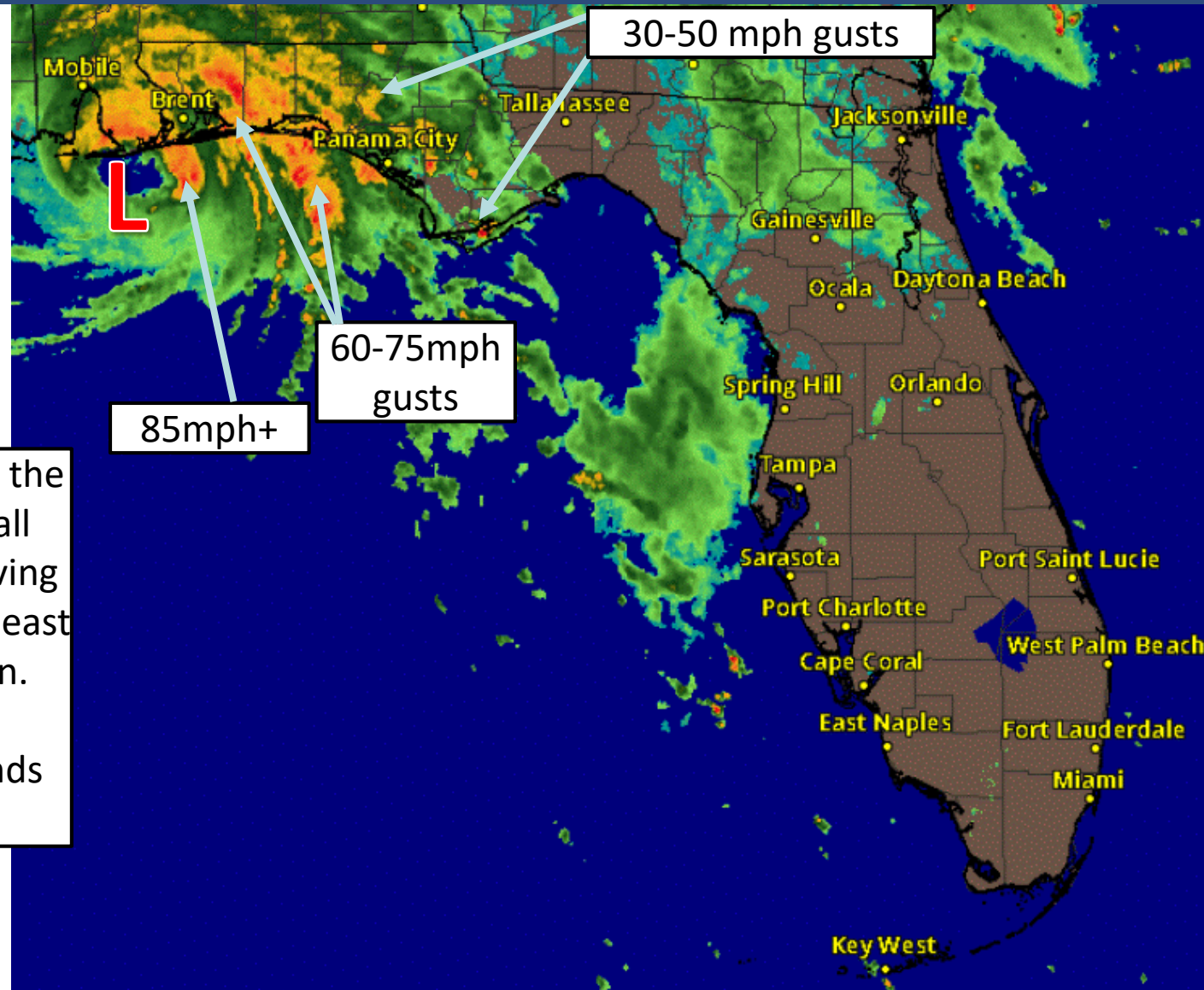
Overview/Recent Changes:

There was another small shift east in the track and Sally has re-strengthened on approach to the coast. It is now a Category 2 Hurricane with maximum sustained winds of 105 mph. Storm surge is ongoing and will increase as high tide approaches this morning. The eye wall is moving into Pensacola with heavy bands through the rest of the Panhandle. ****Flash Flood Emergency for Pensacola****



Current Florida Radar

As of 4:30 AM ET / 3:30 AM CT



The eye of Sally is slowly approaching the Florida/Alabama border. The eye wall with the worst winds is currently moving into Pensacola with strong rain bands east in Santa Rosa, Okaloosa, and Walton.

Tornadic, more intermittent rain bands are moving through Panama City.



Damaging Wind Threat Overview

Hurricane Sally

Sustained hurricane force winds are moving into Pensacola (75-85 mph) with gusts possible over 100 mph. These strong winds will spread northeast into the RED area throughout the morning.

In the eastern Panhandle, wind gusts of 50-70 mph are possible with sustained tropical storm force winds.



[Download KML]

[Download Image]

Wind Threat
Potential for wind greater than 110 mph
Potential for wind 74 to 110 mph
Potential for wind 58 to 73 mph
Potential for wind 39 to 57 mph
Wind less than 39 mph

[https://www.weather.gov/srh/tropical?
office=mob](https://www.weather.gov/srh/tropical?office=mob)

Click on "Threats and Impacts" Tab



Wind Watches and Warnings

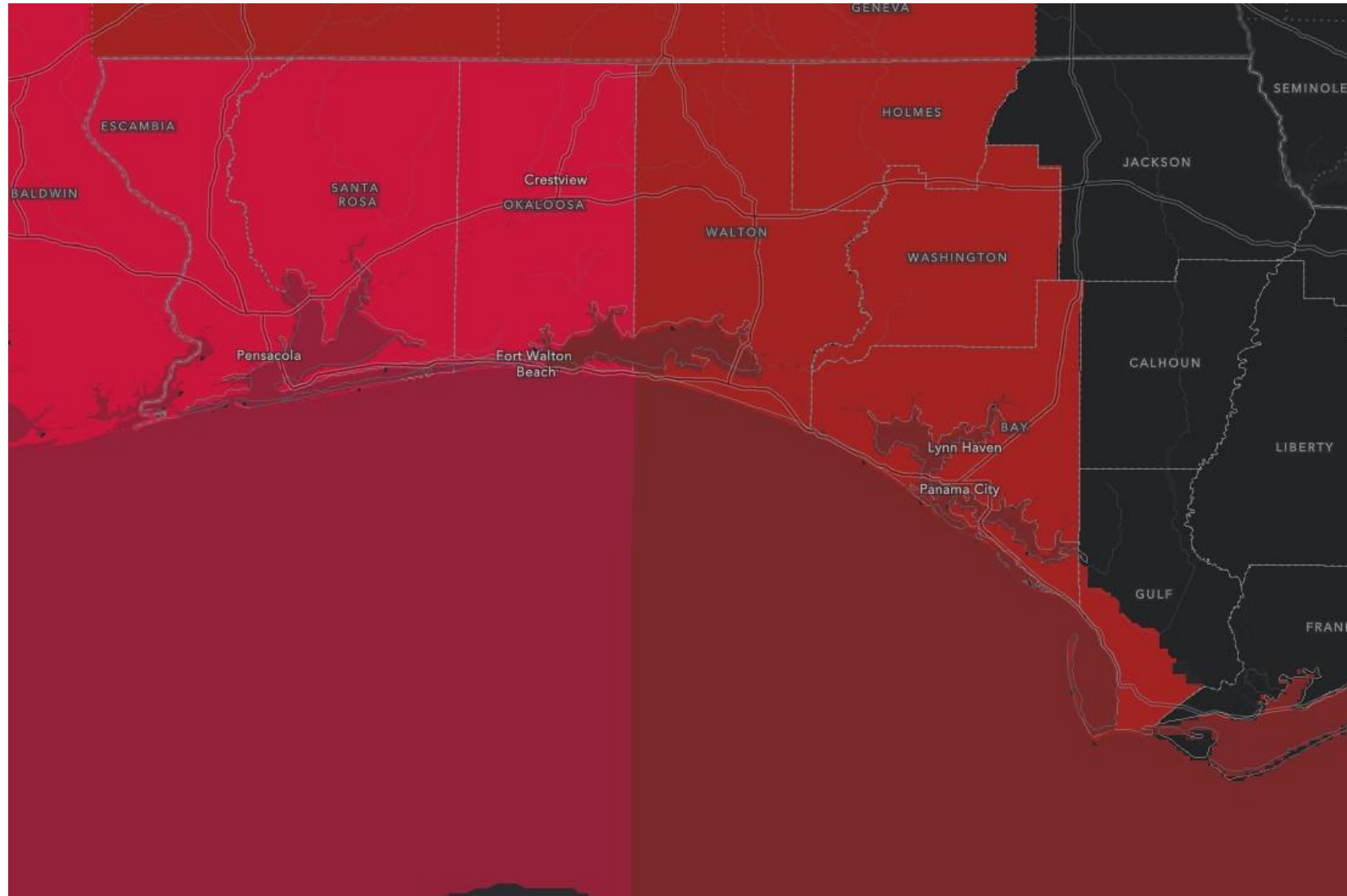
In Effect Until Further Notice

Hurricane Warnings: Escambia, Santa Rosa, and Okaloosa

Tropical Storm Warnings: Walton, Bay, coastal Gulf, Holmes, and Washington.

Isolated power outages and a few downed trees in the tropical storm warnings.

Widespread outages are now expected in the hurricane warning areas.



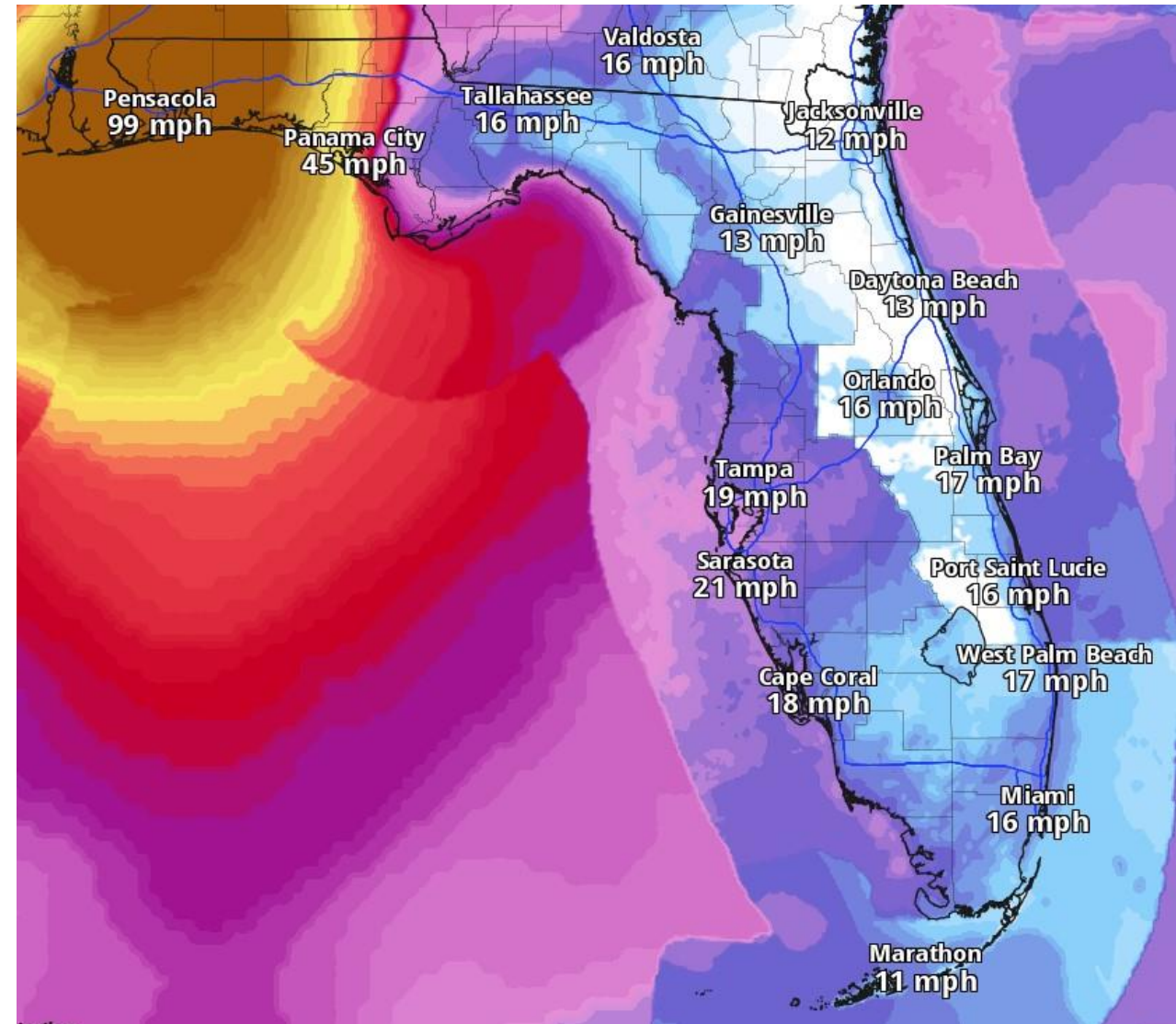


Forecast Wind Speeds This AM

Next 12 Hours – Higher Gusts!

Sustained wind speeds of hurricane force are expected in the western Panhandle!

Higher gusts are likely!





Flood Threat Overview

Hurricane Sally

****This includes the 8-16" that has already falling along the coast of the western Panhandle and 6-12" in the eastern Panhandle.****

ADDITIONAL RAINFALL:

- **Northeast Florida & Peninsula:** 1-2", Locally 4"
- **Big Bend:** 2-4", locally 6"
- **Eastern Panhandle:** 6-10", locally 15"
- **Western Panhandle:** 12-15", locally 20"

Flash Flood EMERGENCY ongoing in Pensacola.



[Download KML]

[Download Image]

Flooding Rain Threat
Potential for extreme flooding rain
Potential for major flooding rain
Potential for moderate flooding rain
Potential for localized flooding rain
Little to no potential for flooding rain

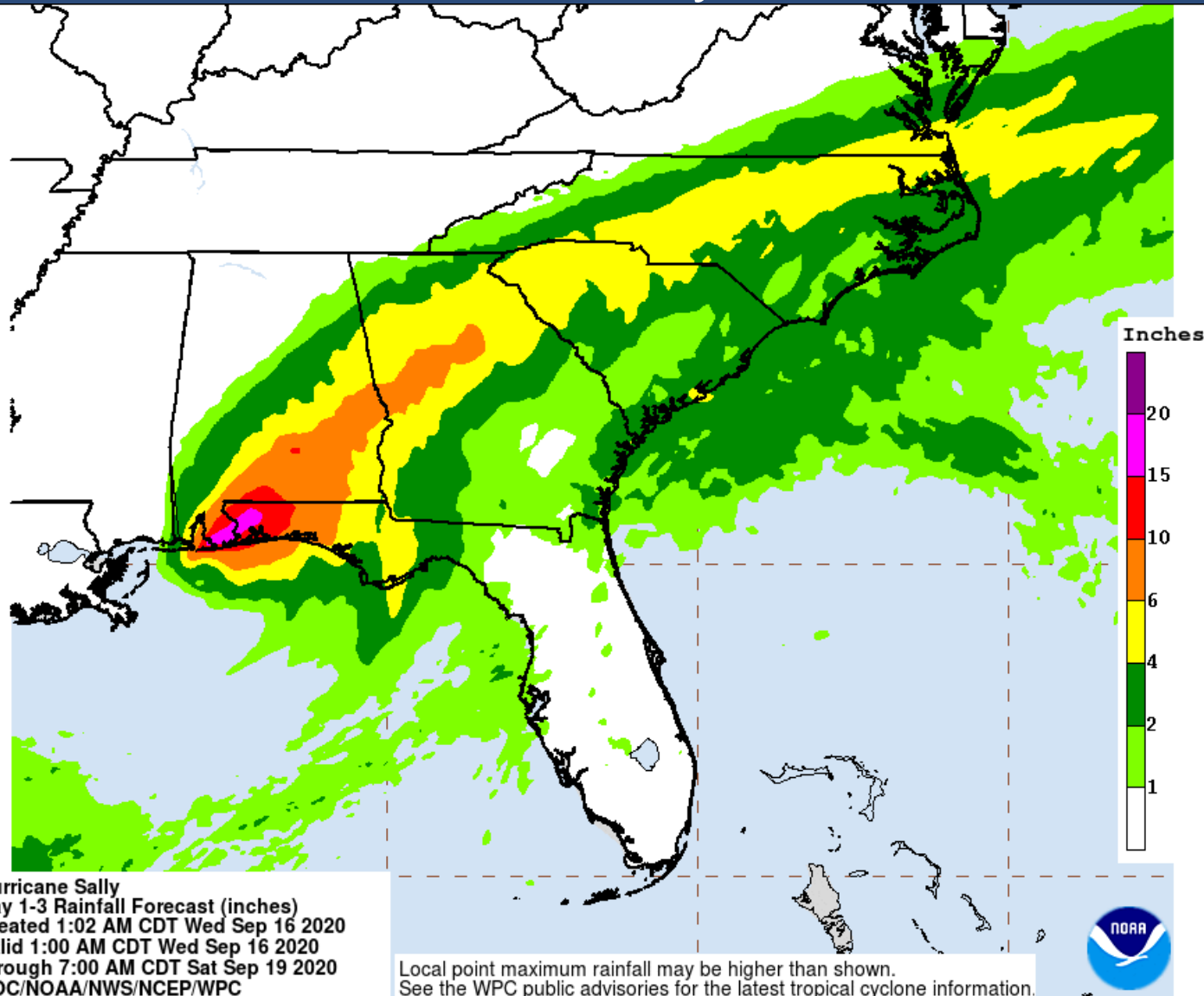
[https://www.weather.gov/srh/tropical?
office=mob](https://www.weather.gov/srh/tropical?office=mob)

Click on "Threats and Impacts" Tab



Rainfall Totals Next 36 Hours

Hurricane Sally



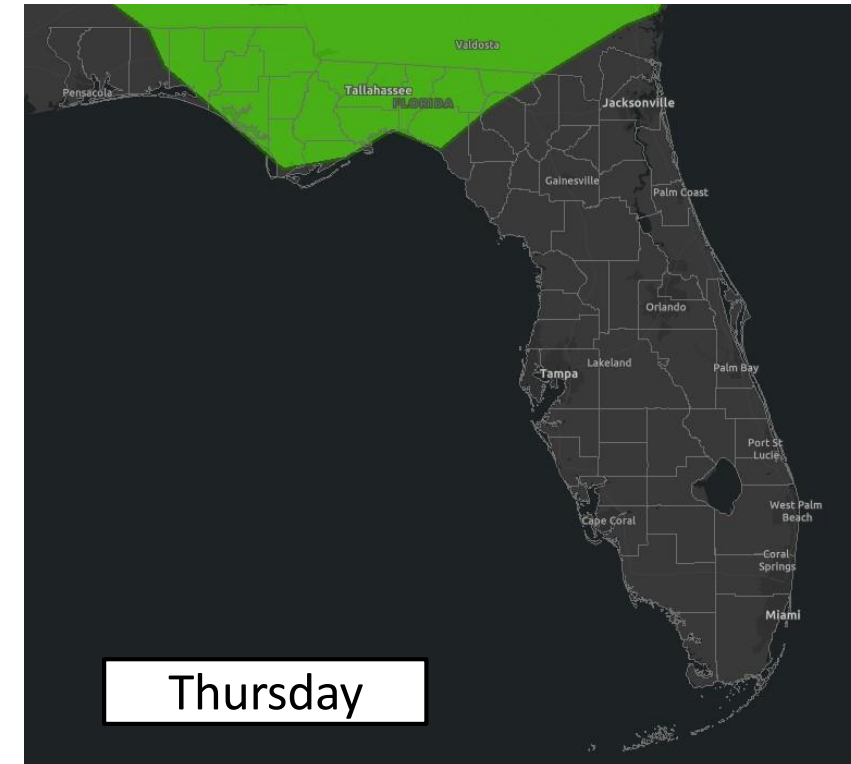
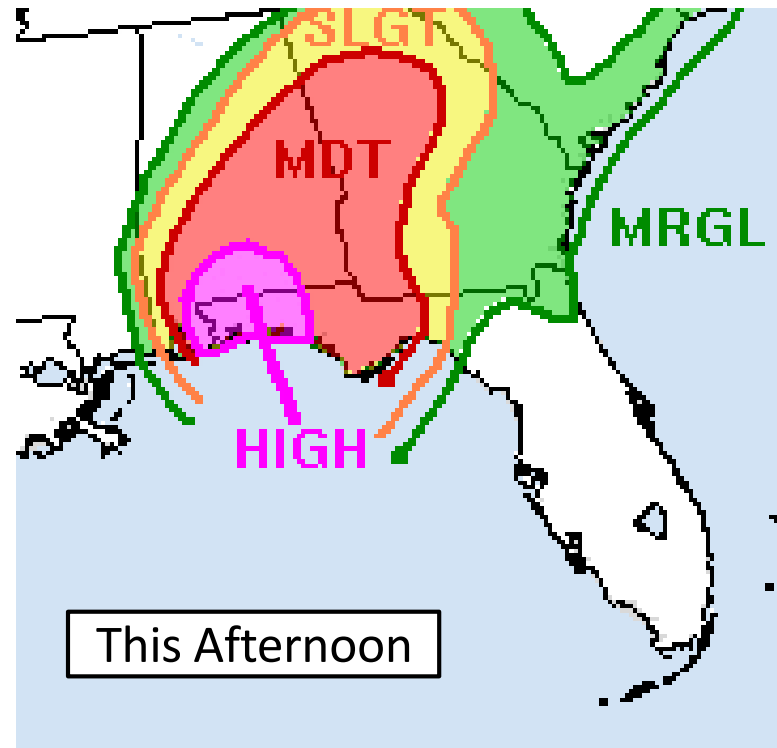
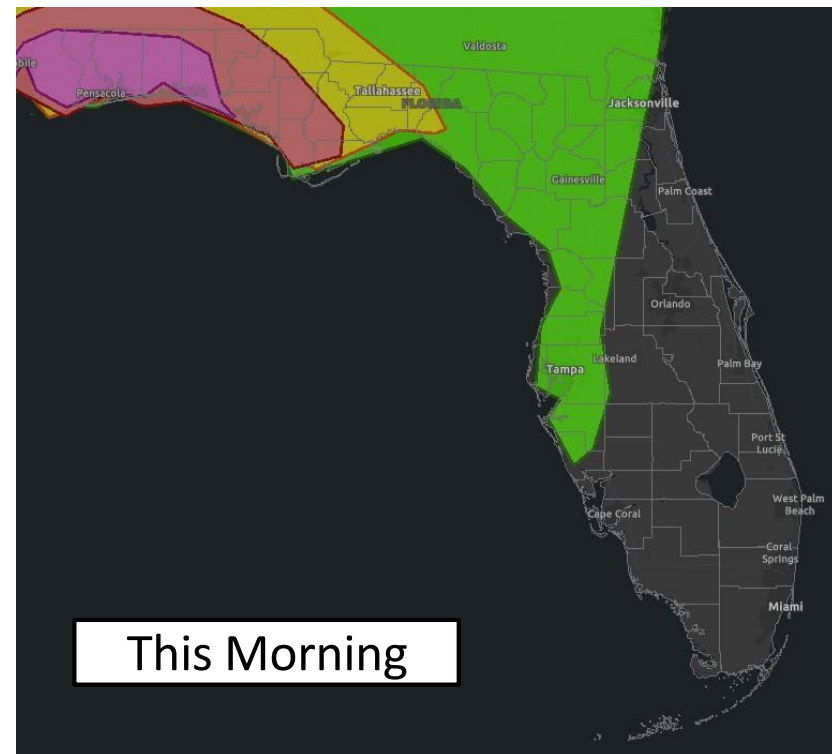
ADDITIONAL RAINFALL:

- **Northeast Florida & Peninsula:** 1-2", Locally 4"
- **Big Bend:** 2-4", locally 6"
- **Eastern Panhandle:** 6-10", locally 15"
- **Western Panhandle:** 12-15", locally 20"



Flash Flood Outlooks

From the Weather Prediction Center



Risk of rainfall exceeding flash flood guidance within 25 miles of a point to the right of a line

HIGH: > 50%

SLGT: 10%-20%

MDT: 20%-50%

MRGL: 5%-10%

A significant flash flood risk exists in the western Panhandle through this afternoon, with an increase threat in the Big Bend into tonight. ****HIGH RISK****




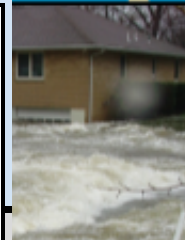
An isolated flash flood is possible across the Peninsula.



Flash Flood Risk Categories

Understanding the Weather Prediction Center Risk Scale

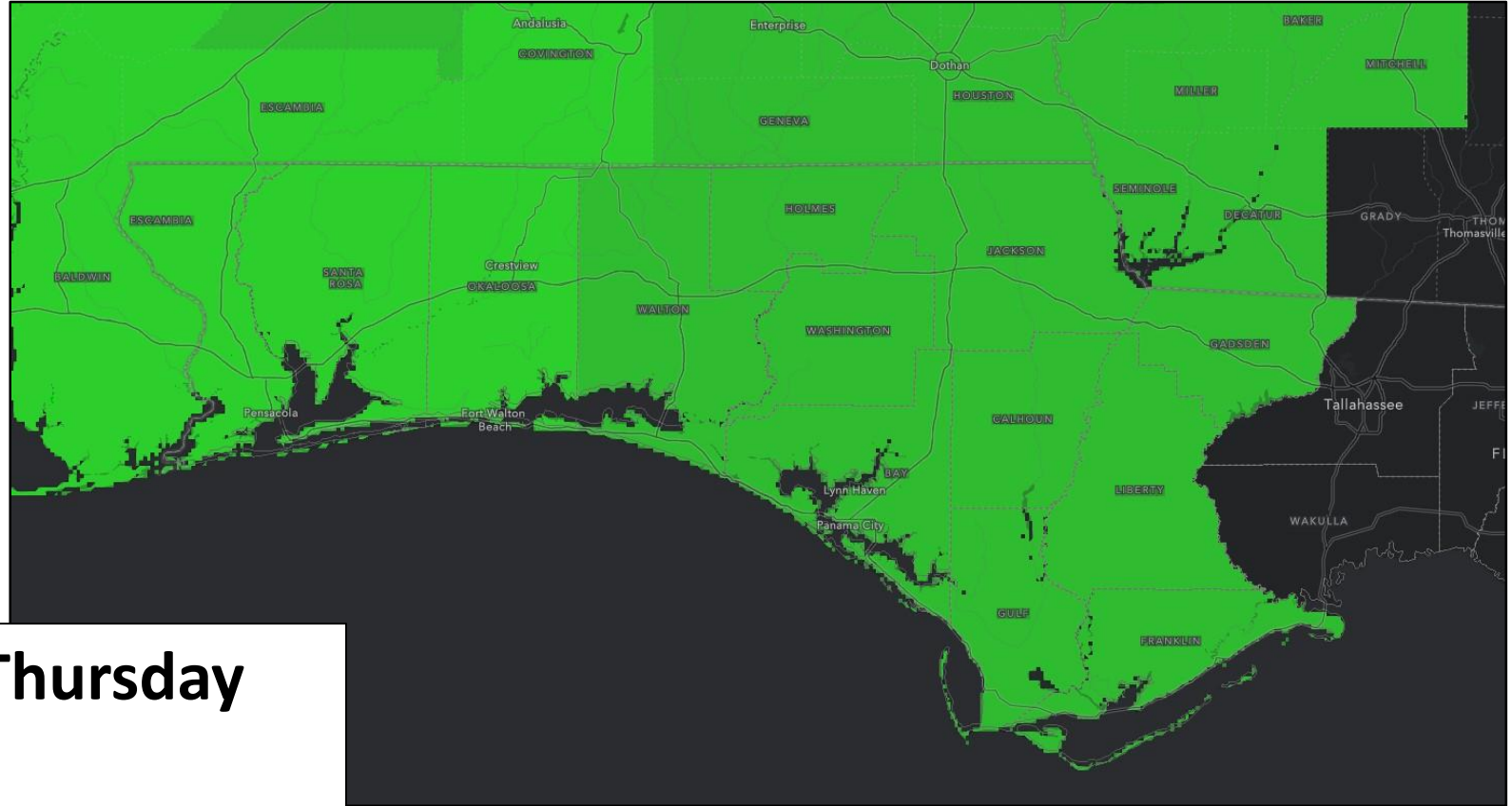
Understanding WPC Excessive Rainfall Risk Categories

No Area/Label		MARGINAL (MRGL)	SLIGHT (SLGT)	MODERATE (MDT)	HIGH (HIGH)
Flash floods are generally not expected.		Isolated flash floods possible	Scattered flash floods possible	Numerous flash floods likely	Widespread flash floods expected
Localized and primarily affecting places that can experience rapid runoff with heavy rainfall.		Mainly localized. Most vulnerable are urban areas, roads, small streams and washes. Isolated significant flash floods possible.	Numerous flash flooding events with significant events possible. Many streams may flood, potentially affecting larger rivers.	Severe, widespread flash flooding. Areas that don't normally experience flash flooding, could. Lives and property in greater danger.	
www.wpc.ncep.noaa.gov @NWSWPC					
Flash flooding near me?	Flash Flooding NO Flash Flooding				
  WEATHER PREDICTION CENTER			Risk of rainfall exceeding flash flood guidance within 25 miles of a point to the right of a line HIGH: > 50% MDT: 20%-50%		SLGT: 10%-20% MRGL: 5%-10% 



Flash Flood Watches until Thursday morning:

All of Region 1 & Franklin, Gadsden, and Liberty County





Storm Surge Threat Overview

Hurricane Sally

4-7' of storm surge is expected across the western Panhandle, including Pensacola and Choctawhatchee Bay.

2-4' of surge is expected in the eastern Panhandle and 1-3' in the Big Bend.

The greatest flooding will occur at high tide this morning!

Water levels will rapidly rise this morning making it even more difficult for the flood waters to drain.



[Download KML]

[Download Image]

Storm Surge Threat
Potential for storm surge flooding greater than 9 ft above ground
Potential for storm surge flooding greater than 6 ft above ground
Potential for storm surge flooding greater than 3 ft above ground
Potential for storm surge flooding greater than 1 ft above ground
Little to no storm surge flooding

[https://www.weather.gov/srh/tropical?
office=mob](https://www.weather.gov/srh/tropical?office=mob)

Click on “Threats and Impacts” Tab



Surge Watches and Warnings

In Effect Until Further Notice

https://www.nhc.noaa.gov/refresh/graphics_at4+shhtml/155356.shtml?inundation#contents

Interactive P-Surge Inundation Map

4-7' of inundation expected in the Warning area of the Florida Panhandle

https://www.nhc.noaa.gov/refresh/graphics_at4+shhtml/155356.shtml?wsurge#contents

Interactive Watch/Warning Map

Surge Watches are in effect for Escambia, Santa Rosa, Okaloosa, and Walton

Storm Surge Warning

There is a **danger of life-threatening inundation** from rising water moving inland from the shoreline generally **within 36 hours**.

Promptly follow evacuation and other instructions from local officials.

Storm Surge Watch

There is a **possibility of life-threatening inundation** from rising water moving inland from the shoreline generally **within 48 hours**.

Promptly follow evacuation and other instructions from local officials.



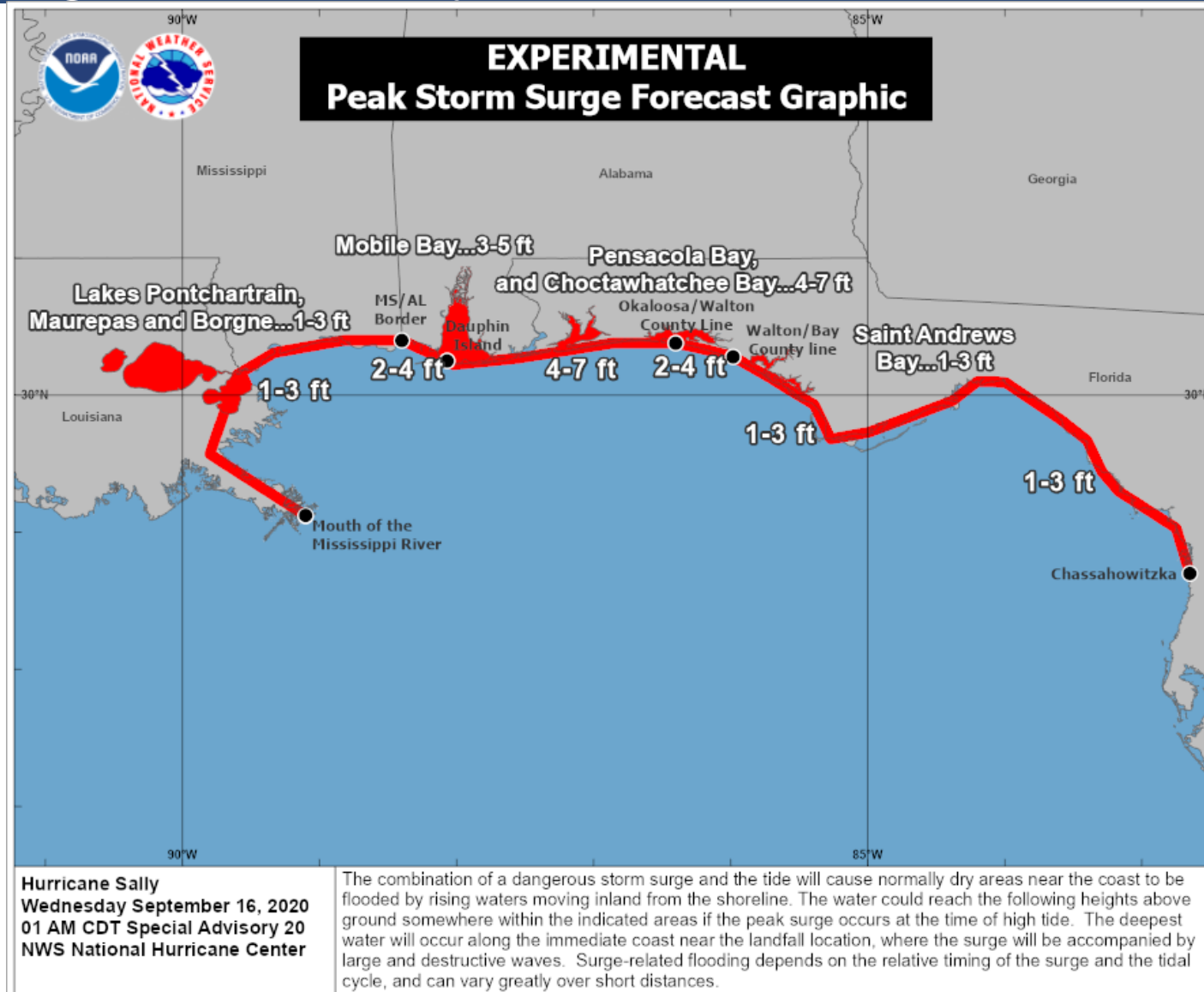
15 30mi

Storm Surge Warning
Storm Surge Watch



Storm Surge/Coastal Flooding

Through Wednesday

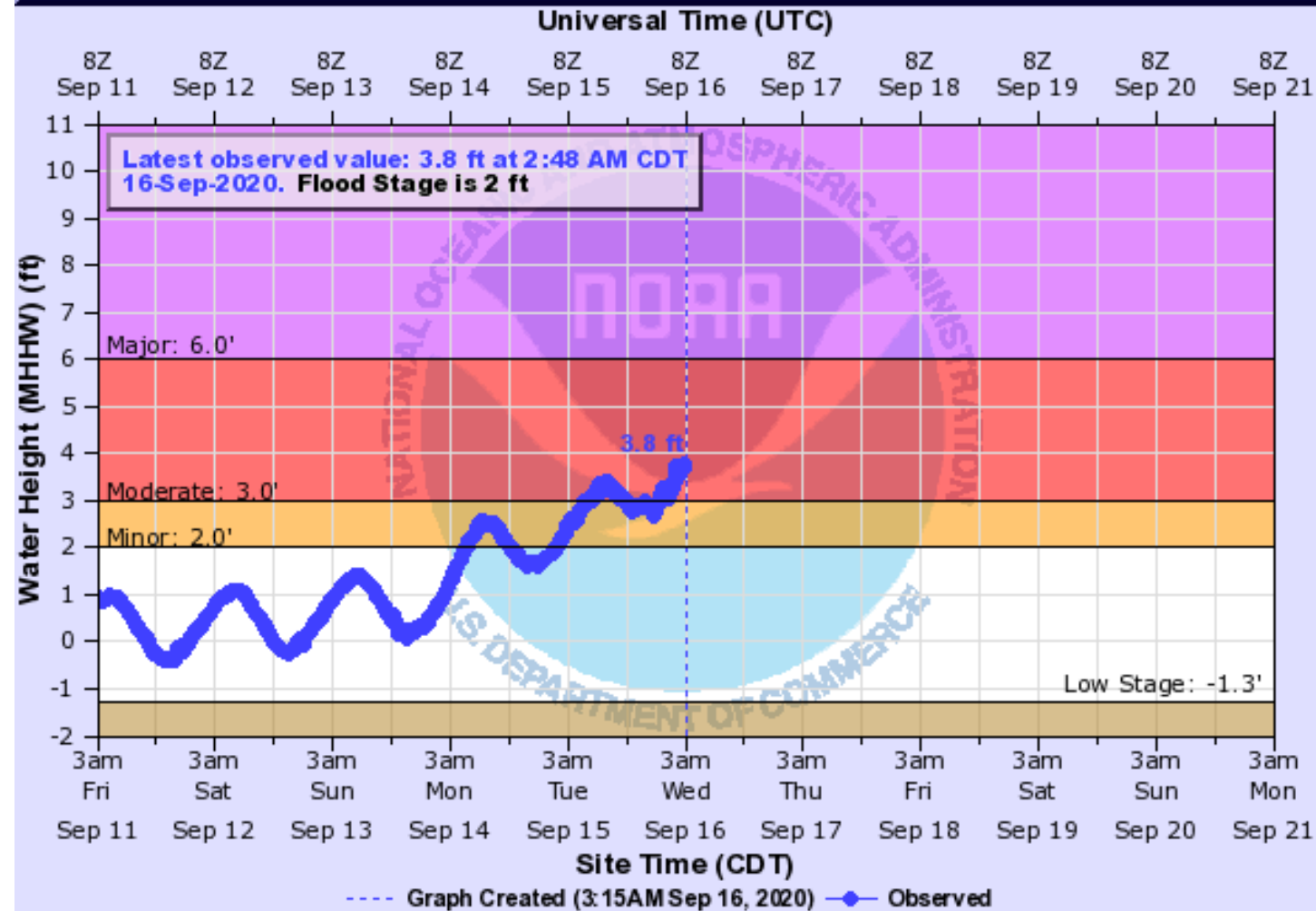




Gulf of Mexico at Pensacola

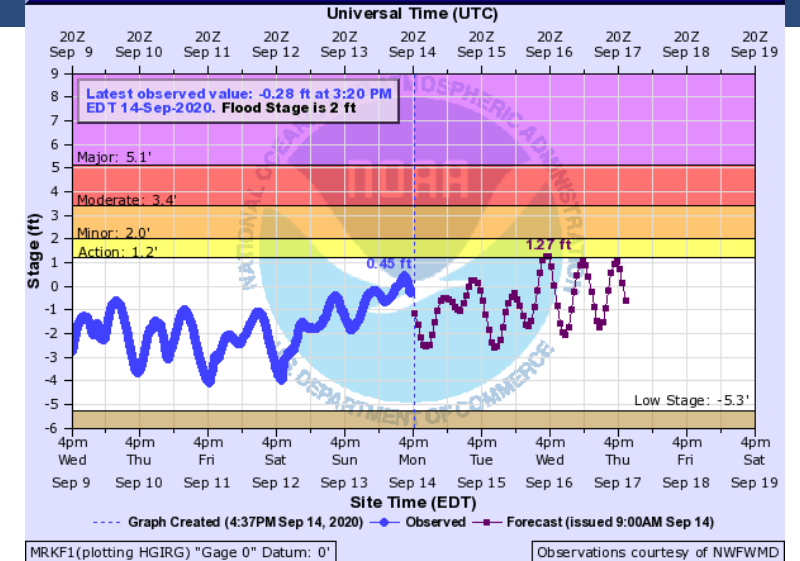
[Hydrograph Link](#)

GULF OF MEXICO TIDE GAUGE NEAR PENSACOLA (IN MHHW)

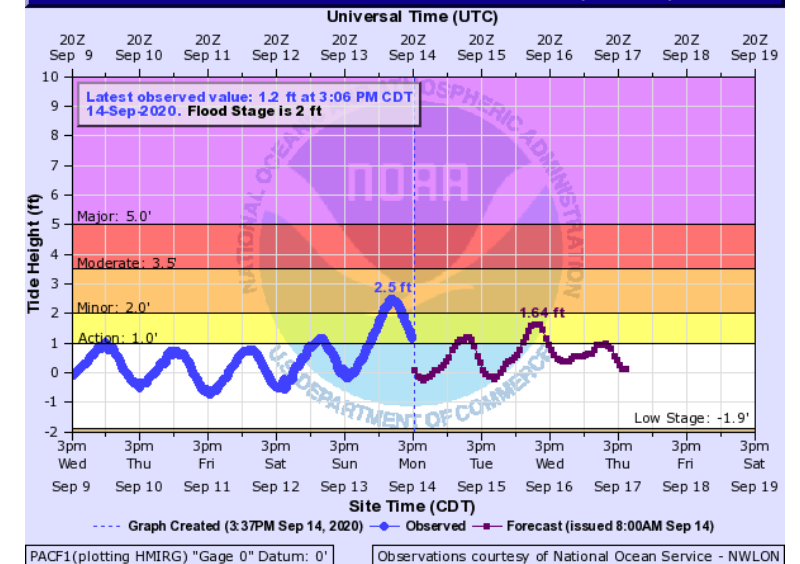


PCLF1(plotting HCIRG) "Gage 0" Datum: n/a

ST. MARKS RIVER AT ST. MARKS (IN MHHW)



GULF OF MEXICO TIDE GAUGE AT PANAMA CITY (IN MHHW)

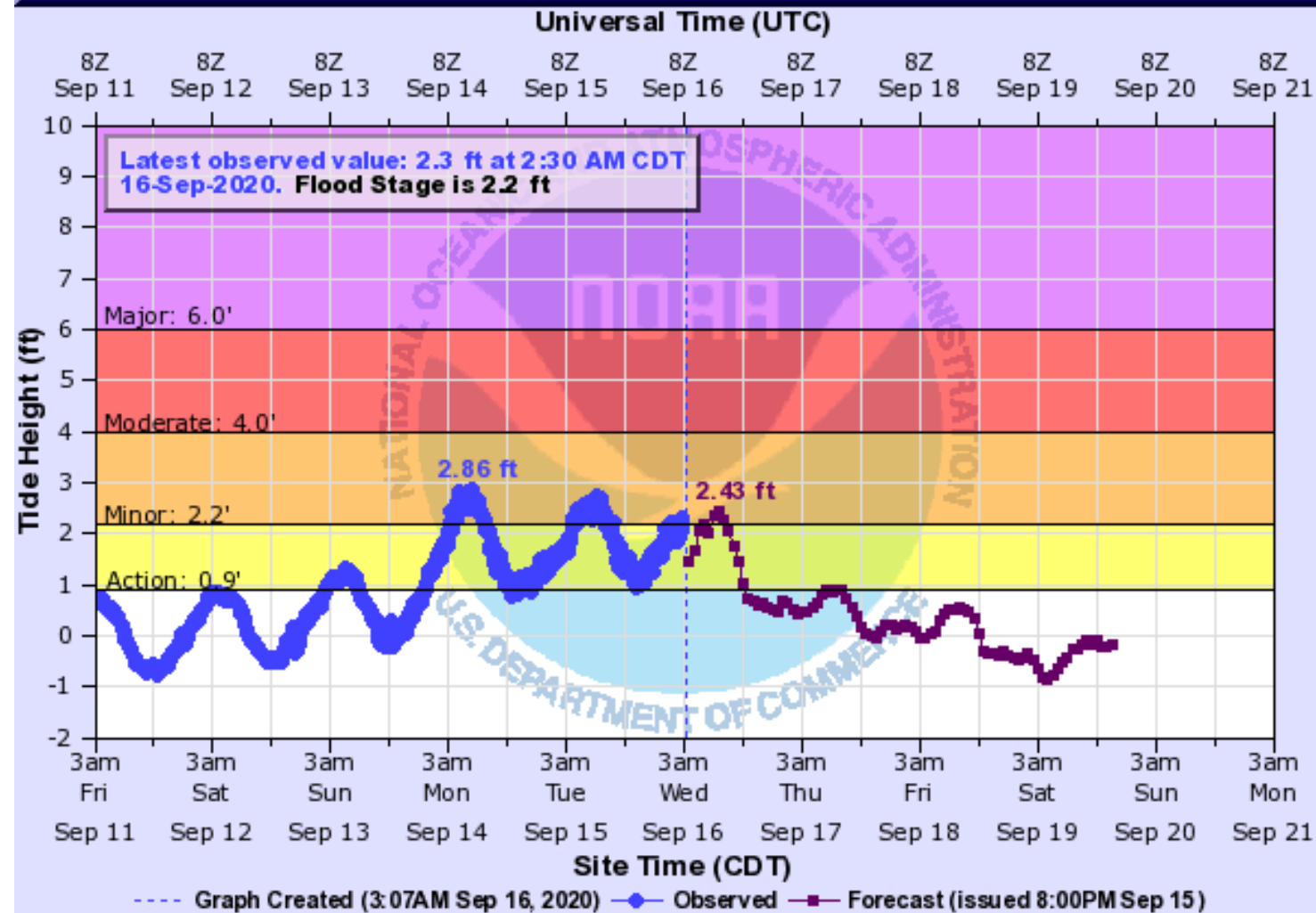




Gulf of Mexico at Panama City Beach

[Hydrograph Link](#)

GULF OF MEXICO TIDE GAUGE AT PANAMA CITY BEACH (IN MHHW)



3 Water begins to flood low lying areas in Camp Helen State Park and on south facing portions of Powell Lake in Bay County. Areas near beach access continue to flood. Erosion from wave action begins along the Bay County Beaches.

2.2 Where breaks in the dune line to beach access exist, water begins to flood access areas from Inlet Beach to St Andrews State Park in Panama City Beach.

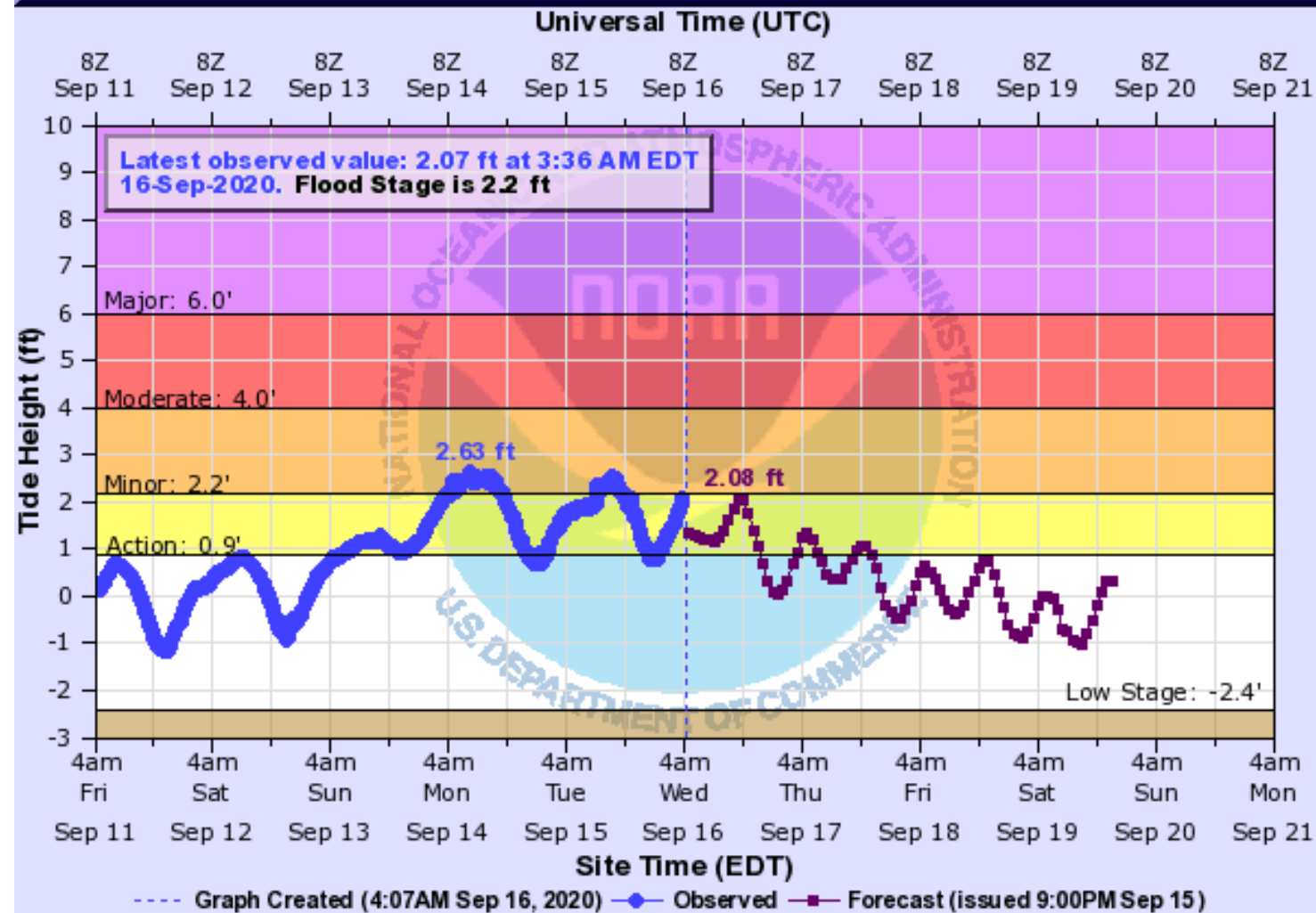
1.7 Water reaches the dune line in several places along the Bay County Beaches.



Gulf of Mexico at Apalachicola

[Hydrograph Link](#)

GULF OF MEXICO TIDE GAUGE AT APALACHICOLA (IN MHHW)



2.7 In Apalachicola, Water Street floods as well as the Battery Park under the John Gorrie Bridge. In Eastpoint, low lying areas near the causeway begin to flood at this level.

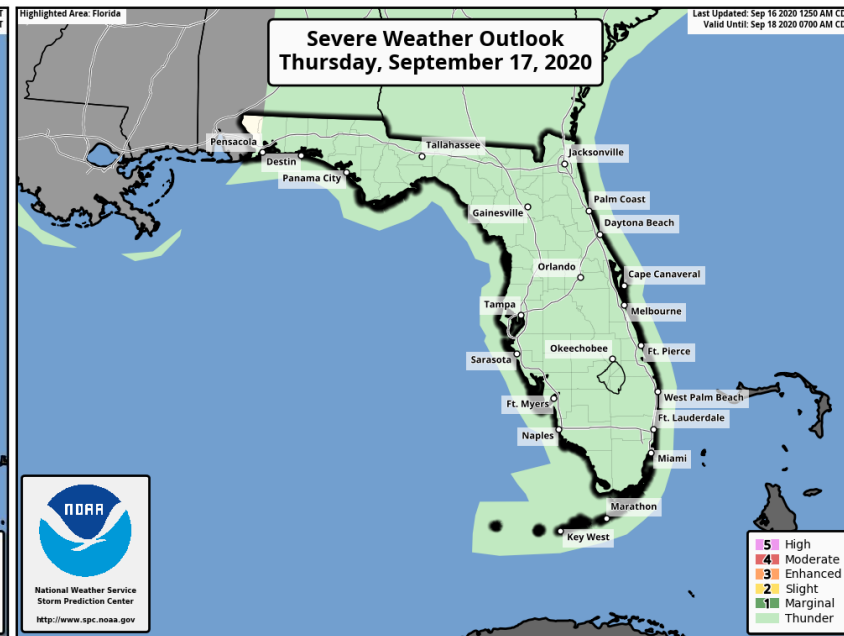
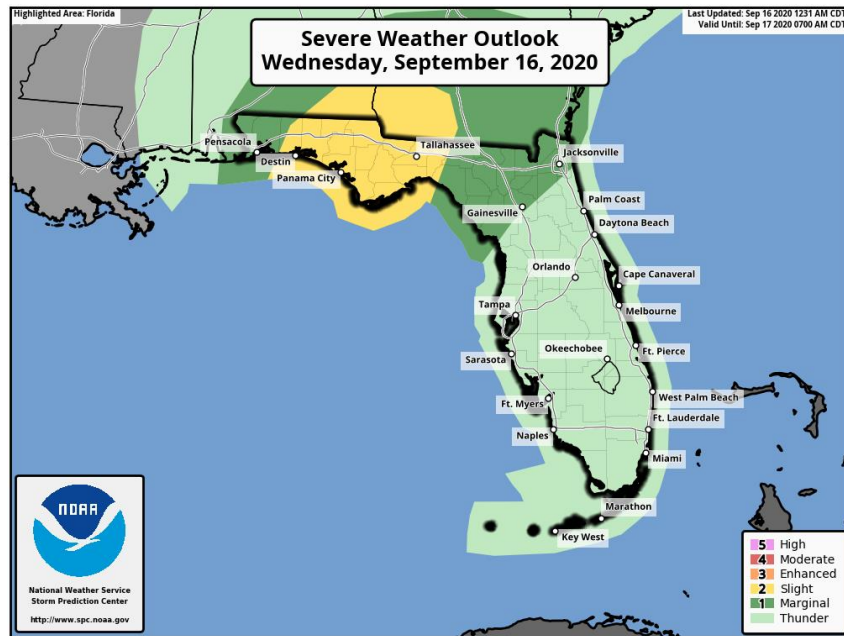
2.2 In Gulf County, water will overwash SR-30E at the Stump Hole. Backyards of residences on the north side of Indian Pass Lagoon will begin to flood. Water approaches Indian Pass Road on the west side of the Lagoon.

1.9 The boat ramp at the city docks in Apalachicola will flood.



Severe Weather Outlooks

From the Storm Prediction Center



A few tornadoes are possible in the Panhandle and western Big Bend from the outer rain bands of Sally through the day on Wednesday. The tornado threat may move into Northeast Florida late on Wednesday. **Additional tornado watches are likely to be issued.**

Understanding Severe Thunderstorm Risk Categories

THUNDERSTORMS (no label)	1 - MARGINAL (MRGL)	2 - SLIGHT (SLGT)	3 - ENHANCED (ENH)	4 - MODERATE (MDT)	5 - HIGH (HIGH)
No severe* thunderstorms expected	Isolated severe thunderstorms possible	Scattered severe storms possible	Numerous severe storms possible	Widespread severe storms likely	Widespread severe storms expected
Lightning/flooding threats exist with <u>all</u> thunderstorms	Limited in duration and/or coverage and/or intensity	Short-lived and/or not widespread, isolated intense storms possible	More persistent and/or widespread, a few intense	Long-lived, widespread and intense	Long-lived, very widespread and particularly intense



Tornado Watch

From the Storm Prediction Center – Until 6 AM CT / 7 AM ET

Outer rain bands are rotating and will be moving onshore throughout the day.

Additional tornadoes watches will be issued to cover the rest of the day.

Tornado Watch

Valid Until
6:00 AM CDT Wednesday
September 16, 2020

Threat Information



TORNADOES

A Couple Tornadoes Possible



HAIL

Isolated Hail Up To
No Hail Size Possible



WIND

Isolated Gusts
Up To 70 MPH Possible

Potential Exposure

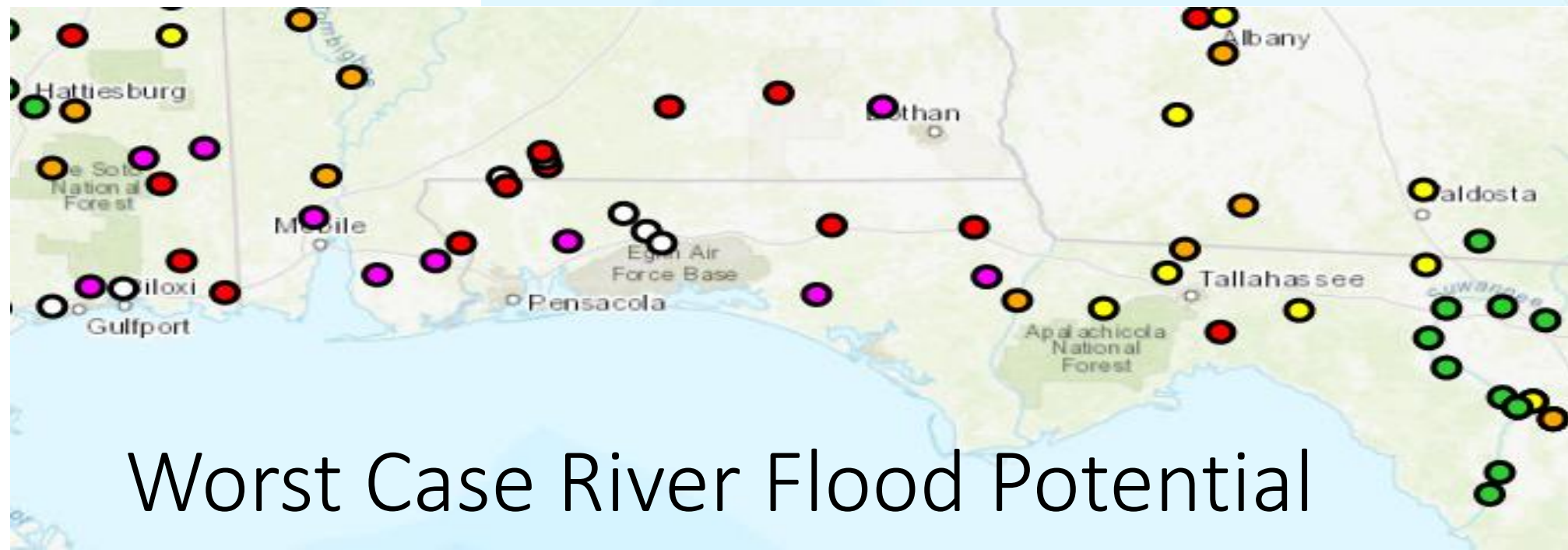
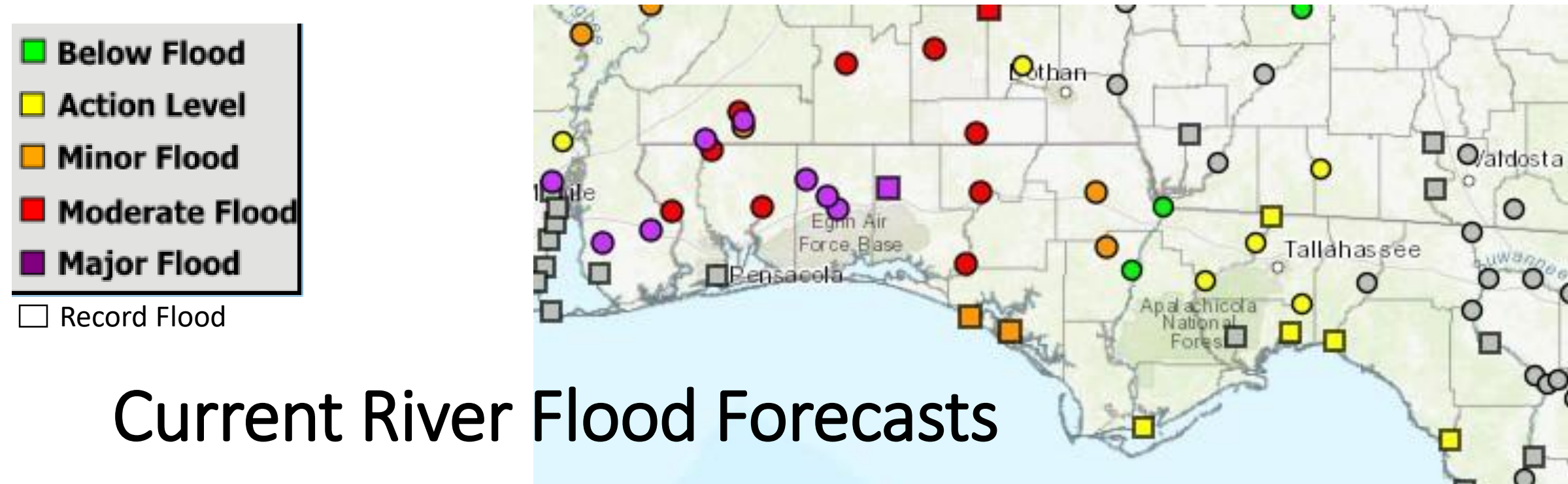


Population: 1,288,742
Schools: 378
Hospitals: 38



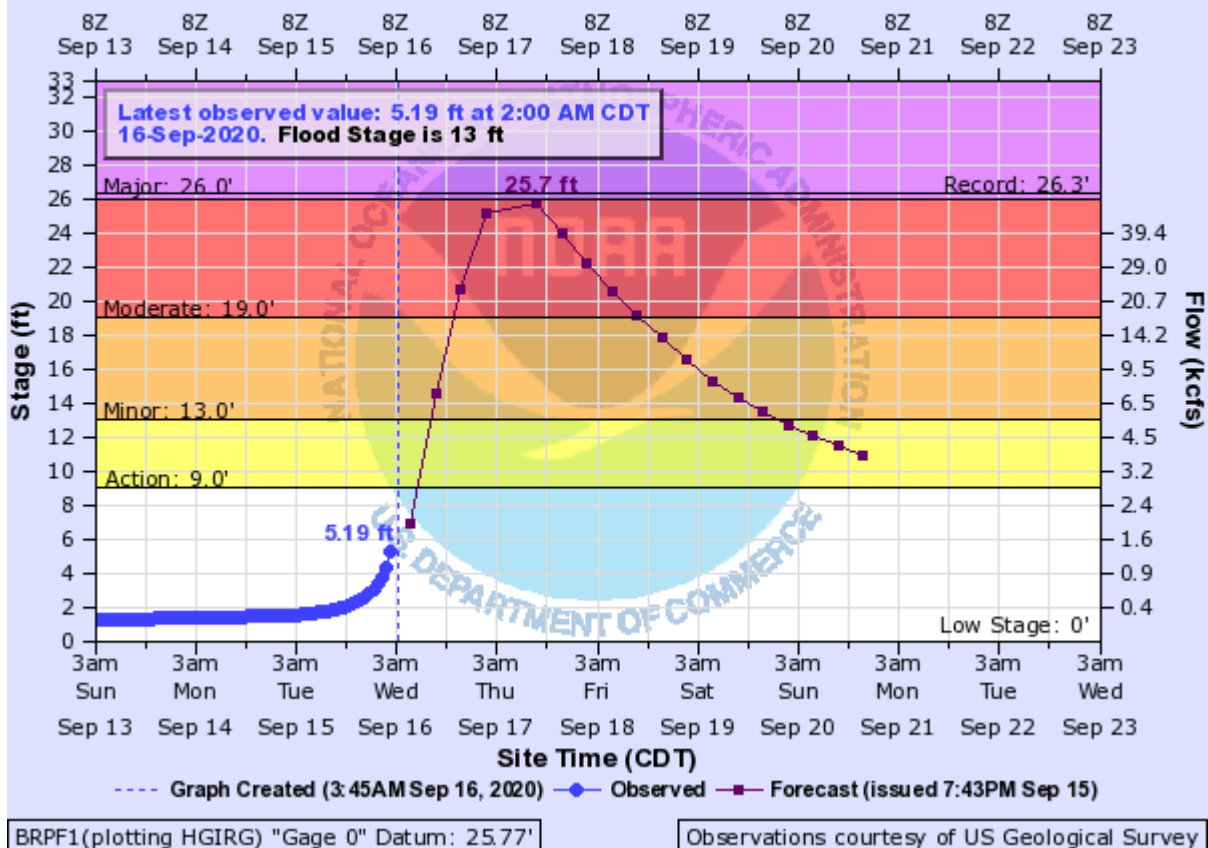
Tornado Watch #490





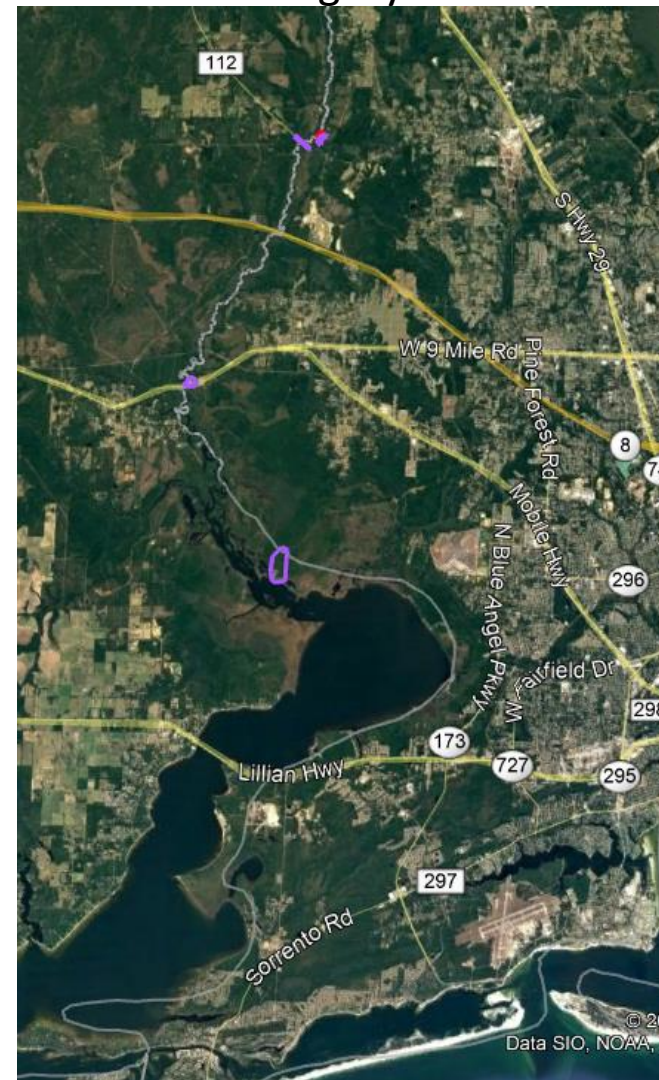
PERDIDO RIVER NEAR BARRINEAU PARK

Universal Time (UTC)

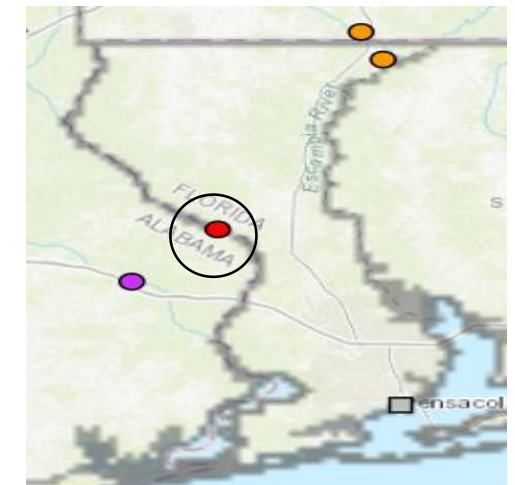


- 26.3 RECORD FLOOD - Hurricane Georges. Highway 112 Bridge is closed. River Annex Road, Ruby's Fish Camp, Hurst Hammock Road, River Annex Road, Seminole Landing, Adventures Perdido River, and River Bend Estates are flooded.
- 24.06 Water enters the first floor of houses on stilts just north of Adventures Perdido River.
- 17.55 Water reaches the first floor of Adventures Perdido River Office Building.
- 13 River begins to leave its banks at the parking lot of Adventures Perdido River. Begins to threaten several permanently parked travel trailers.

Mapped areas of concern based on NWS Impact Statements related to flood category

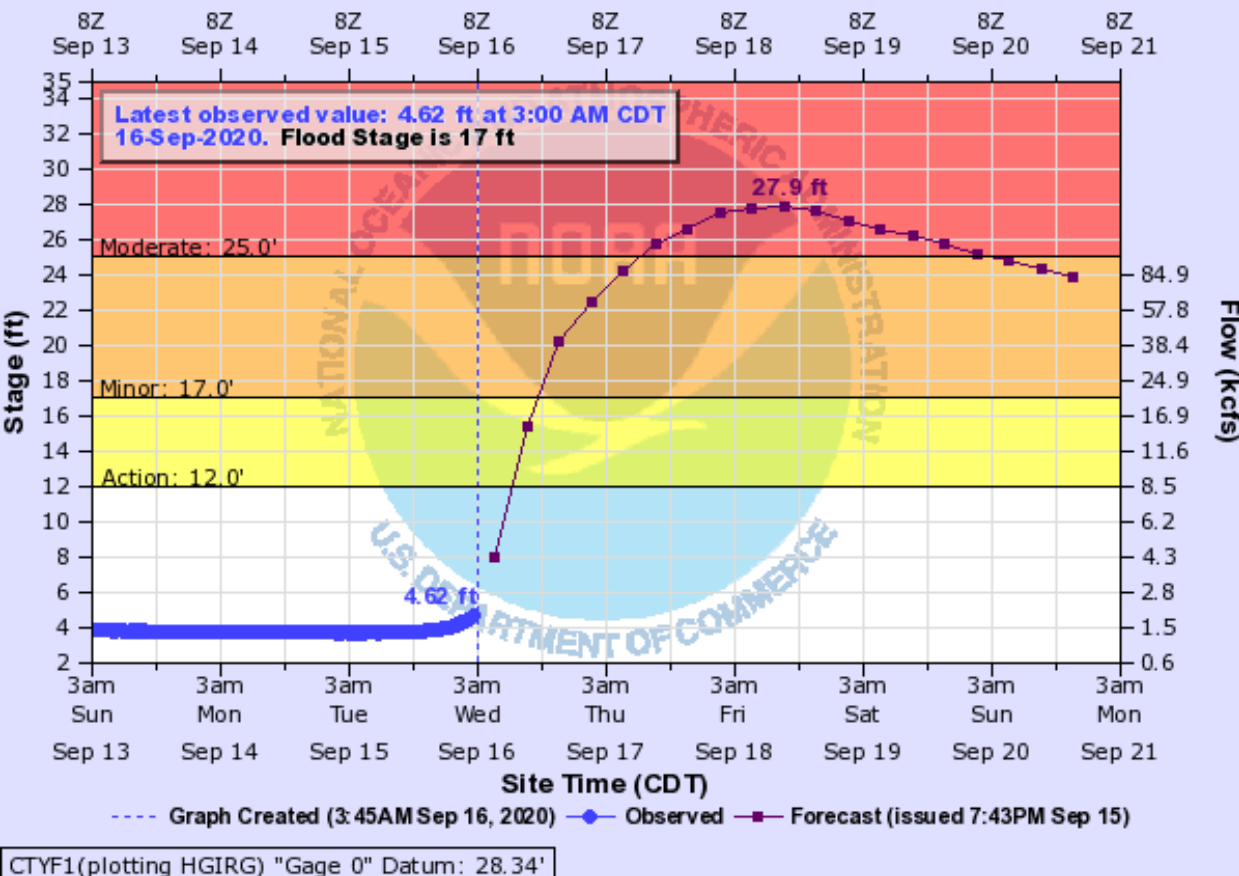


Escambia County



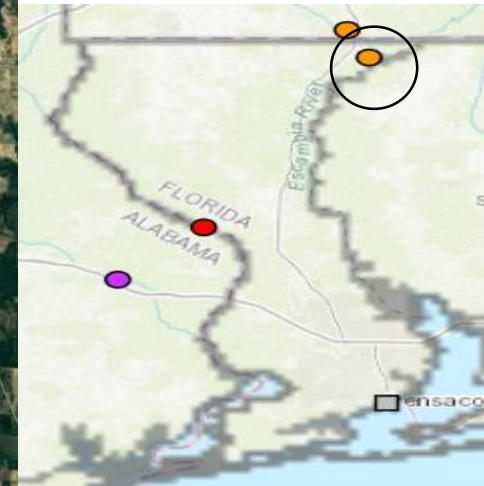
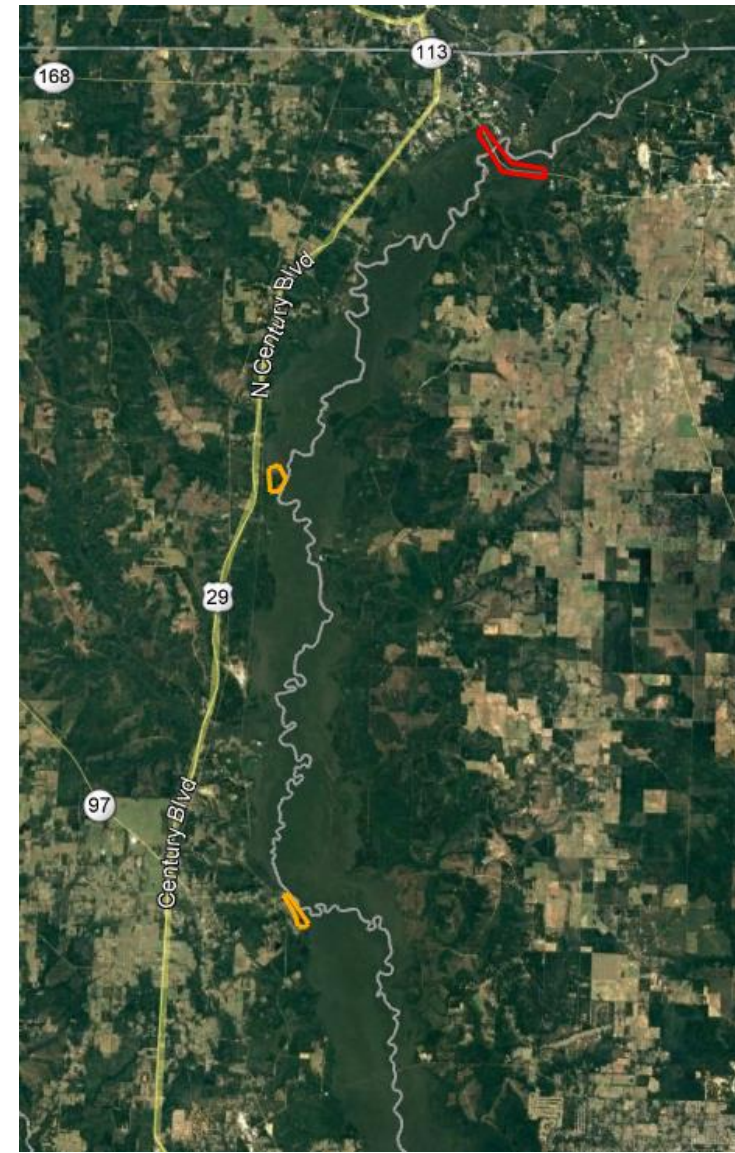
ESCAMBIA RIVER NEAR CENTURY

Universal Time (UTC)



Stage	Impact
34	Some flooding in the eastern sections of Century.
33.2	Bridge flood of Highway 4 floods.
24.2	RECORD FLOOD of March 18th 1990 - Water enters several houses on Worley Road, Daffin Road, and Fairground Road.
23.7	Second highest record flood - Approximately 8 houses become isolated and sections of Mystic Springs Road, River Bend Road and Fairground Road are impassable. Water from the river flows into ponds at B and L Catfish Farm on Mystic Road.
23.3	Widespread flooding of pasture and farm land. Water begins to reach Mystic Springs Road, Worley Road, Mamer Holley Lane and River Bend Road. Approximately 5 houses become isolated in the McDavid and Molino communities. Public boat ramps at Mystic Springs and Fairground Road are submerged.
19	Low lying pastures will flood. Cattle should be moved to higher ground.
17	Considerable flooding of lowlands.
13	Minor overflow of lowlands in the area.

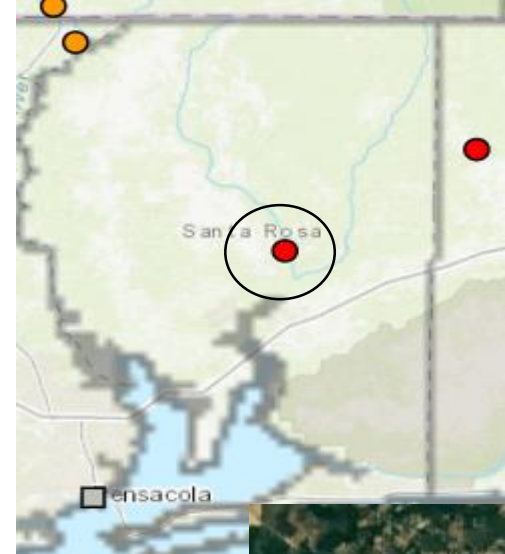
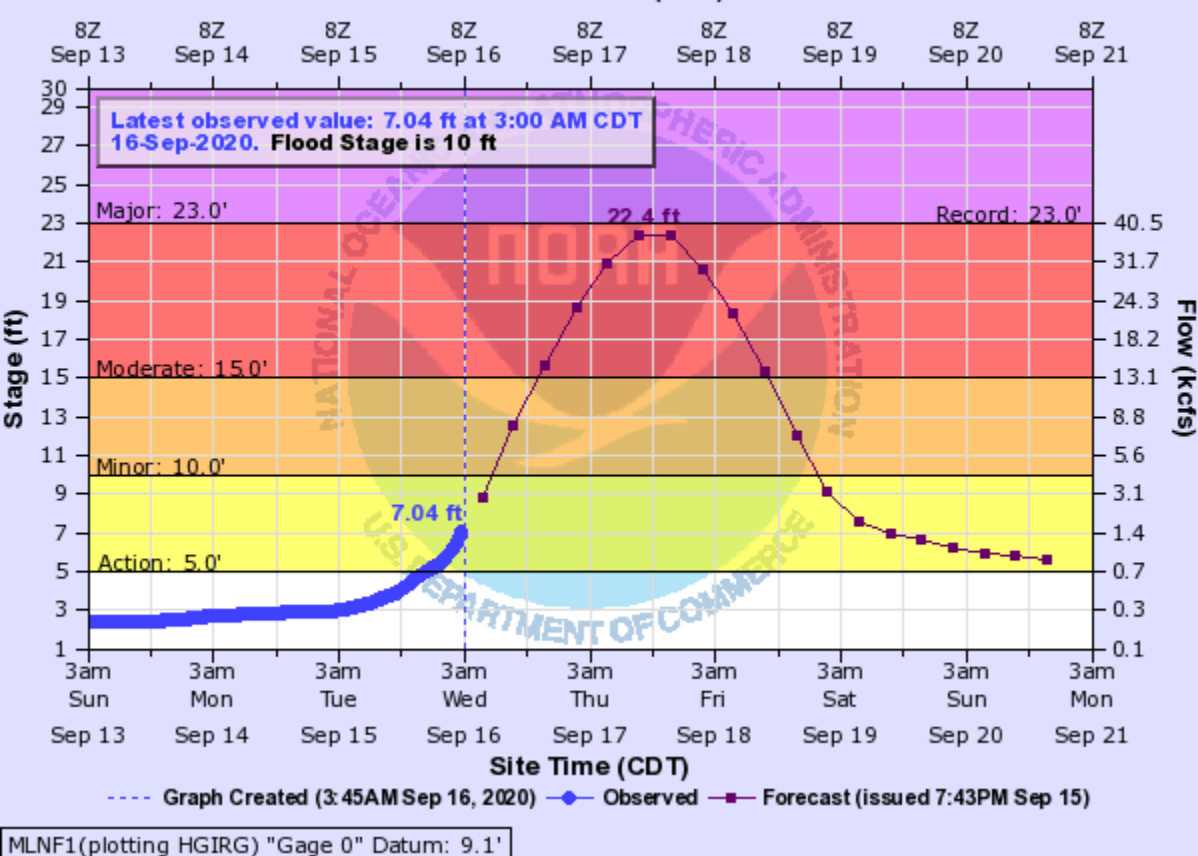
Escambia County



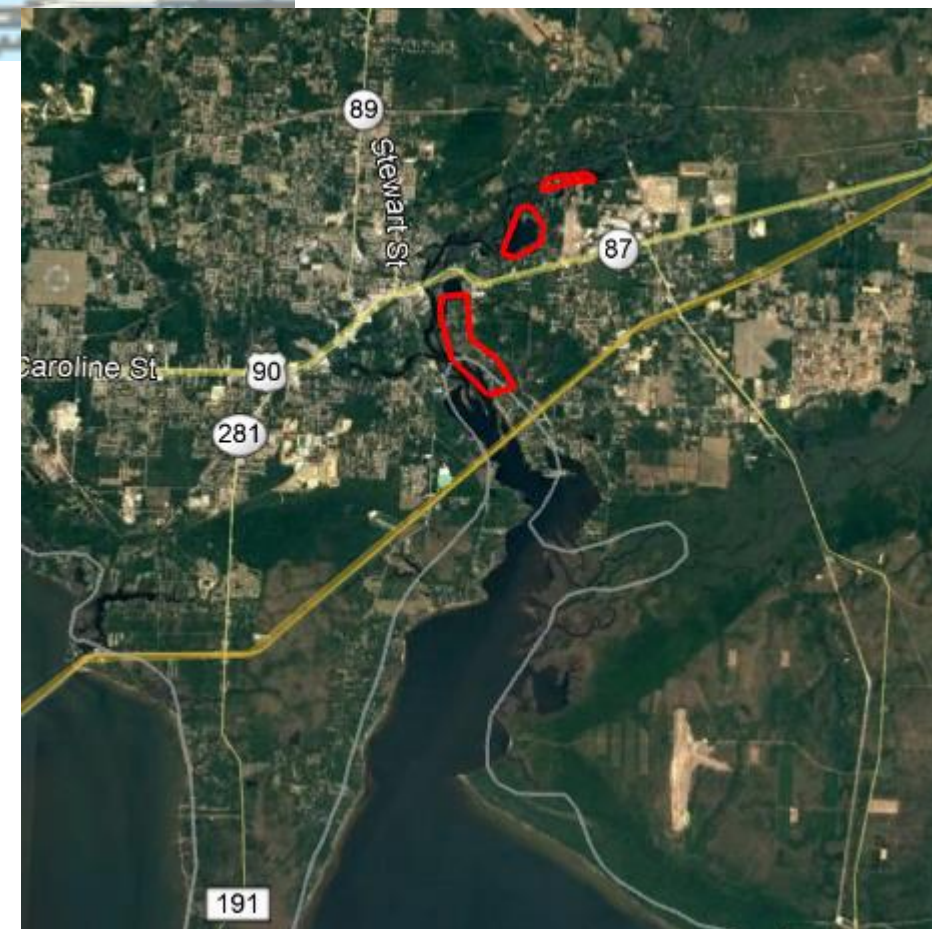
Mapped areas of concern based on NWS Impact Statements related to flood category

BIG COLDWATER CREEK NEAR MILTON

Universal Time (UTC)



Santa Rosa County



Mapped areas of concern based on NWS Impact Statements related to flood category

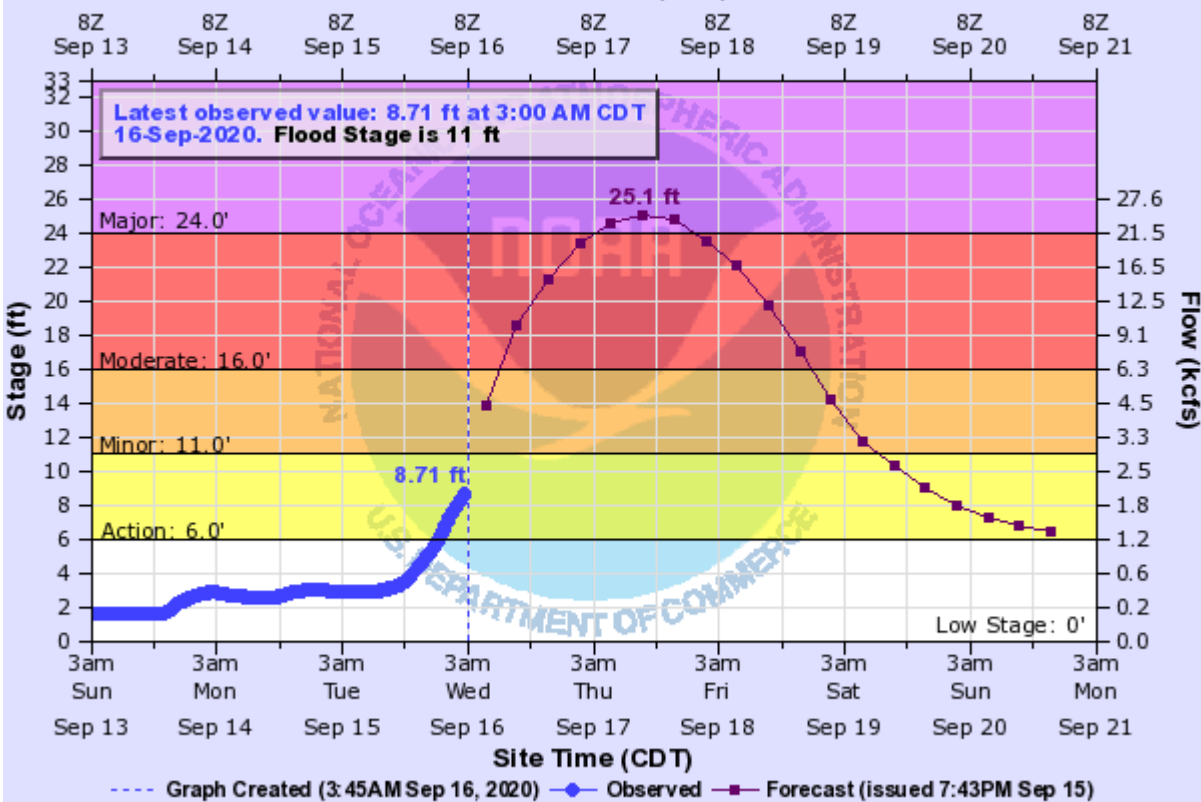
Stage **Impacts**

19.8 20-25 Homes in Paradise Island near Milton affected by flood waters. Severe undermining of several homes in Ward Basin area south of Milton.

10 Flooding of lowlands and some fish camps will occurs.

BLACKWATER RIVER (AL) NEAR BAKER

Universal Time (UTC)

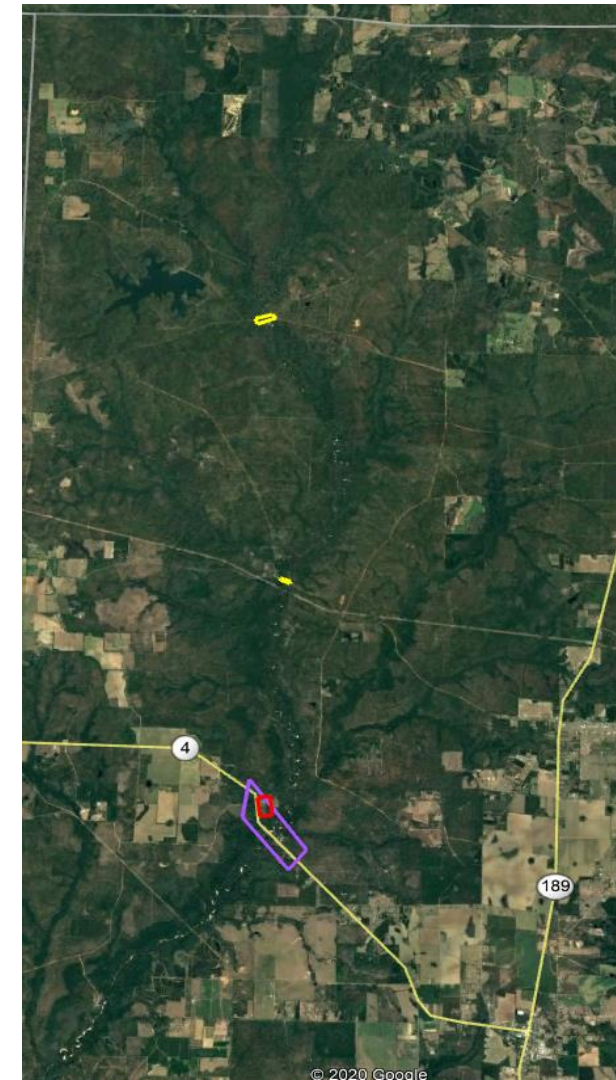


BAKF1(plotting HGIRG) "Gage 0" Datum: 60.5'

- 24 Highway 4 bridge is closed.
- 23 Buildings underwater in Highway 4 roadside park
- 16 Some residential flooding occurs downstream from Baker.
- 14.5 Flooding of West Park in Baker.
- 14 Flooding of East Park in Baker.
- 11 Minor flooding of secondary roads and lowlands from around Baker to downstream of Baker.
- 9.5 Kennedy and Peaden Bridges are flooded upstream.

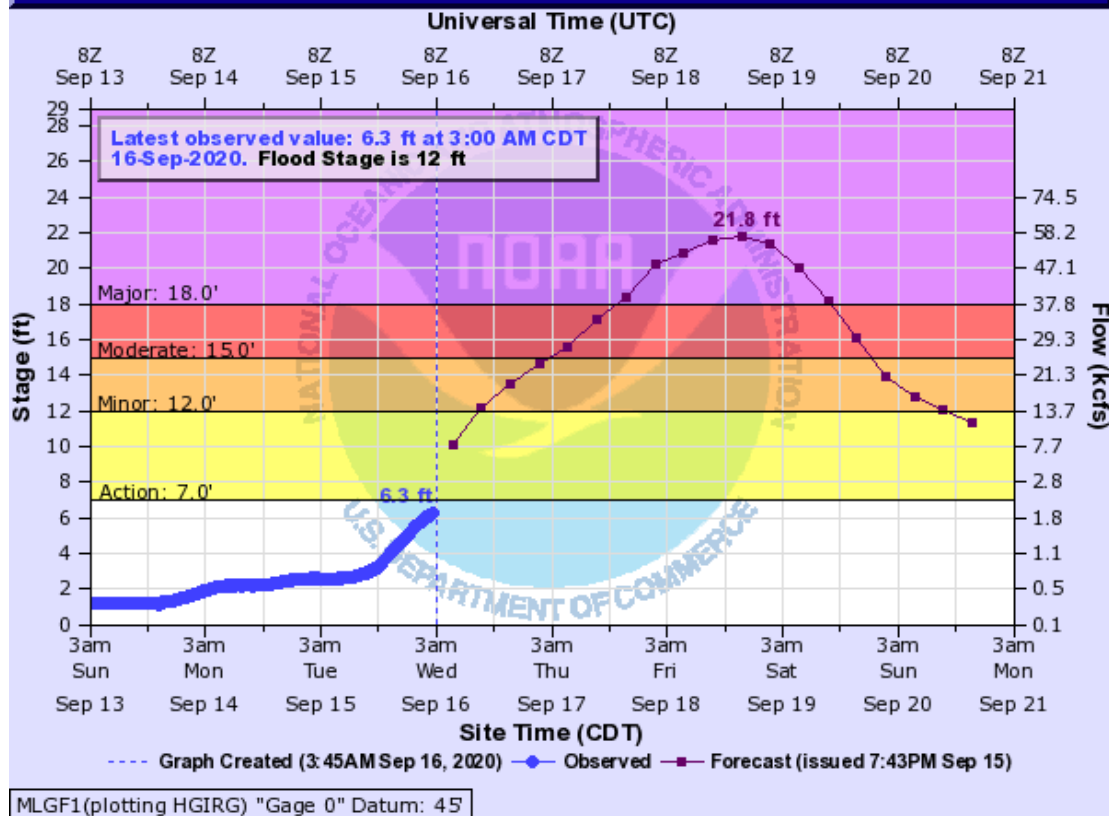


Okaloosa County

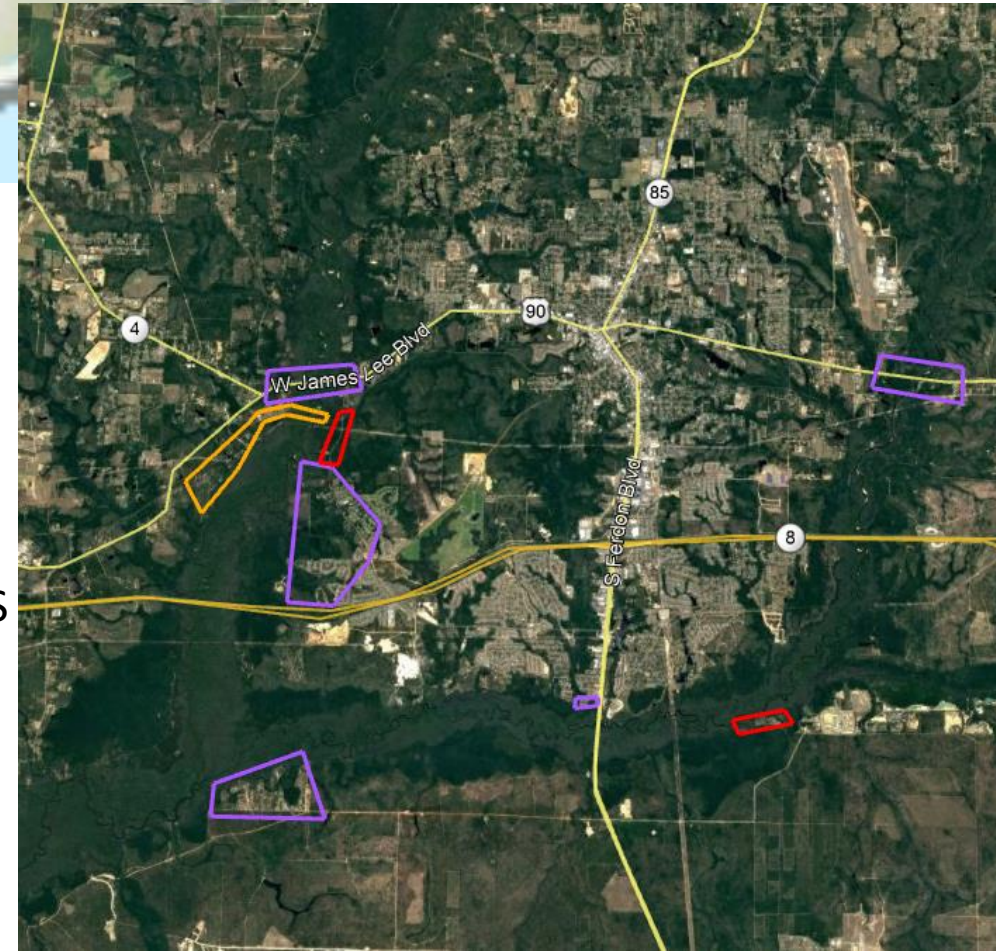


Mapped areas of concern based on NWS Impact Statements related to flood category

YELLOW RIVER (AL) AT MILLIGAN



Okaloosa County

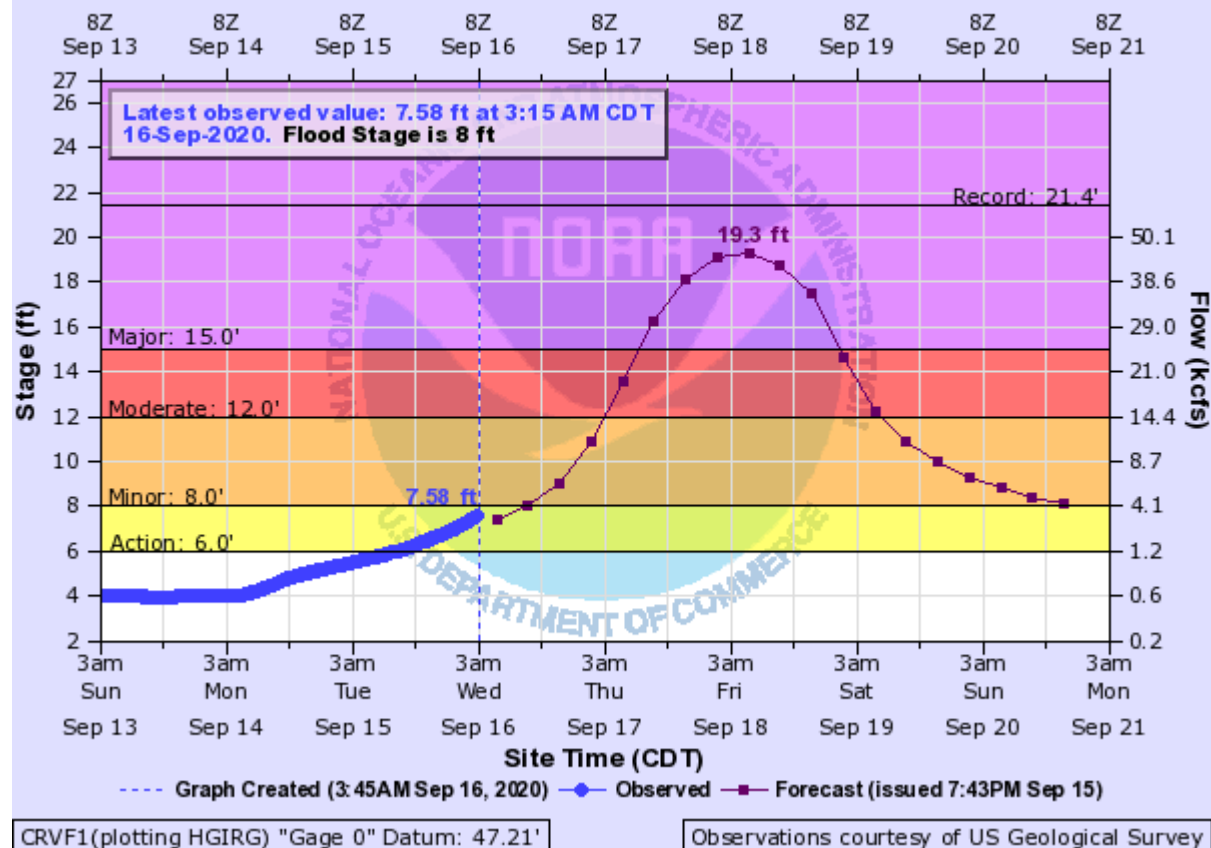


Mapped areas of concern based on NWS Impact Statements related to flood category

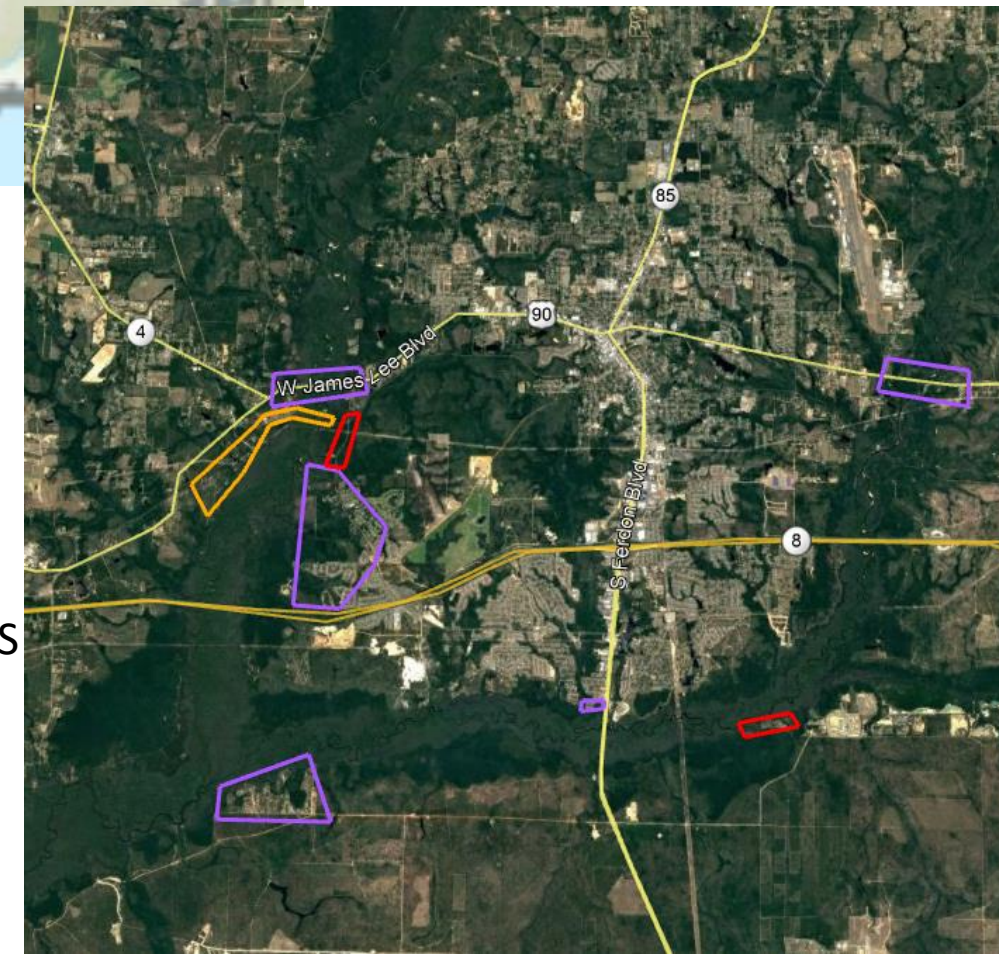
- 26 Severe flooding will occur in Milligan with many homes flooded. Water will be up to the eaves of some homes. Water will be six to eight feet deep over the U.S. Highway 90 bridge.
- 20.3 Many homes on both sides of the river, along Antioch Road and east of U.S. Highway 90, flood with up to three feet of water in some homes on Antioch Road.
- 19.1 Water crosses Highway 90 on the east end of bridge.
- 18.6 Water crosses Highway 90 on the west end of bridge
- 18 Widespread flooding east of the U.S. Highway 90 bridge and downstream of the gage occurs. Numerous evacuations are required. U.S. Highway 90 and the L & N Railroad tracks start to flood.
- 15.4 Antioch Road is flooded.
- 15 Many homes near and east of the L & N Railroad tracks downstream of the U.S. Highway 90 bridge are flooded. Some evacuations are necessary.
- 14.5 Antioch road begins to flood.
- 14 Some homes downstream of the U.S. Highway 90 bridge and along A.L. Gillman Road begin to flood. Evacuations are necessary if higher stages are expected.
- 13 Water threatens home on Ellis and Antioch Roads.
- 12 Extensive overflow of lowlands will occur and a few rural roads in the area will become flooded.
- 11.5 Water flows over yards on Ellis Road.
- 9.9 Some minor overflow of low lying areas will occur. Water will enter some yards along Antioch Road in Milligan.

SHOAL RIVER NEAR CRESTVIEW

Universal Time (UTC)

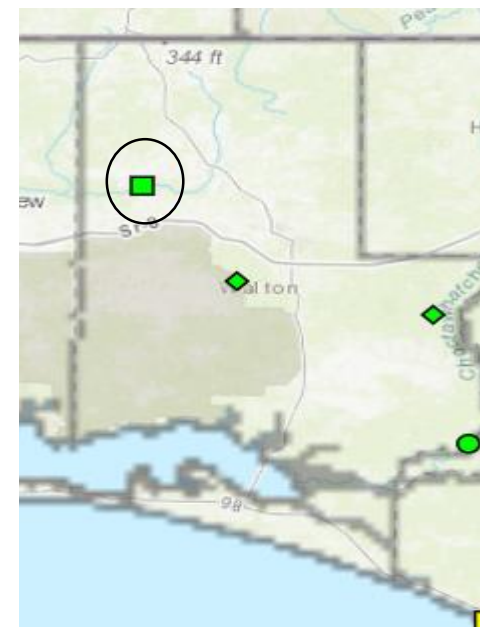
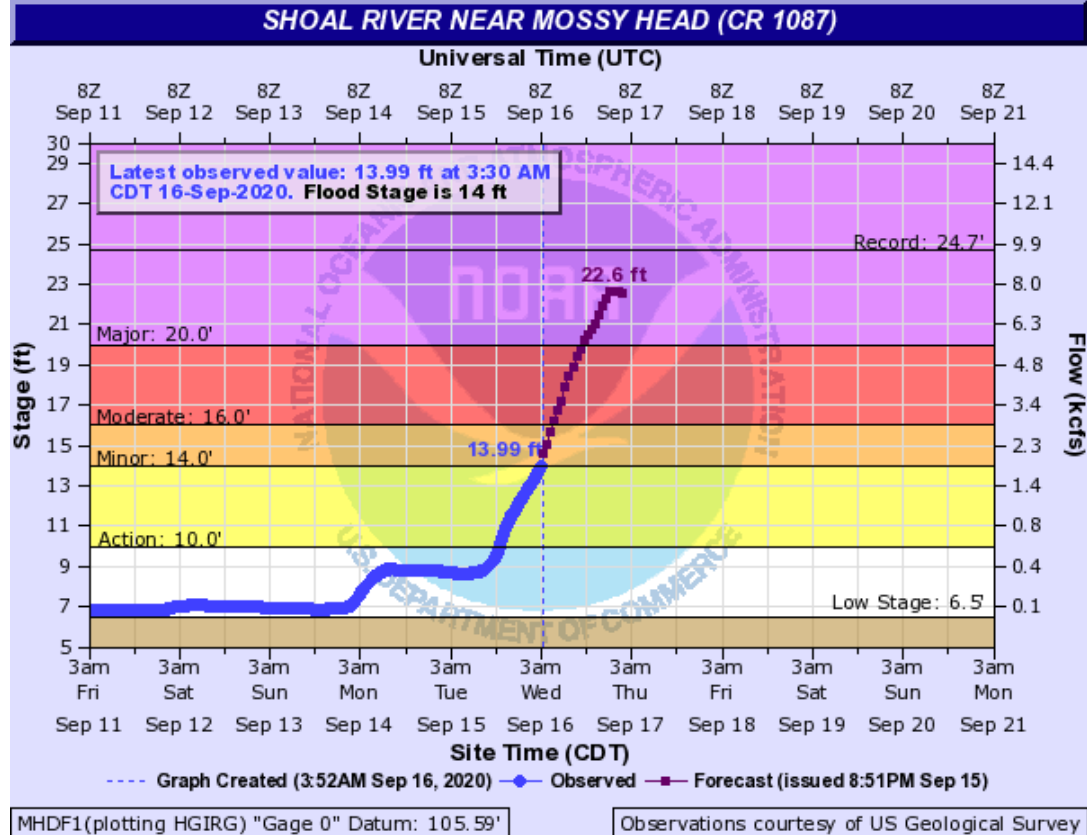


Okaloosa County



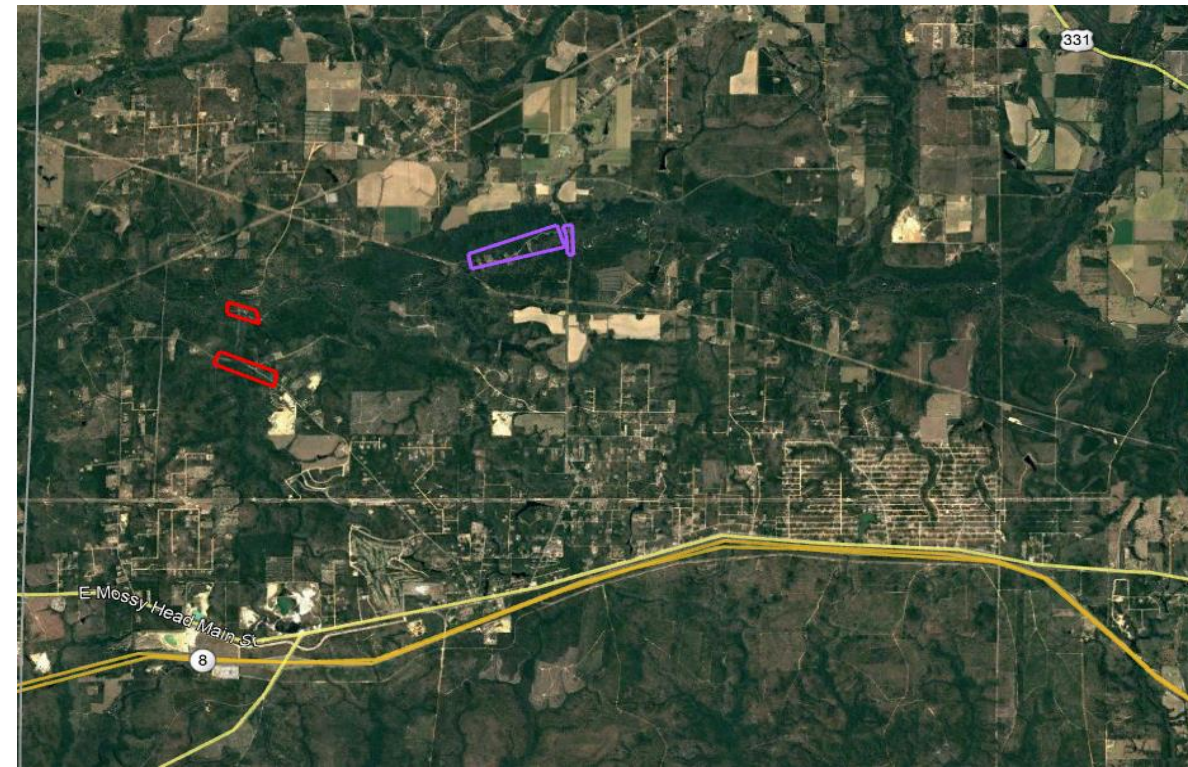
Mapped areas of concern based on NWS Impact Statements related to flood category

- 21.4 Water in homes at Trevor Court and Antioch Roads. Buildings underwater in Highway 85 roadside park. Highway 90 bridge flooded.
- 15 Water in Trevor Court. Some homes in Rattlesnake Bluff become flooded.
- 14 Residential flooding in the Trevor Court area.
- 13 Homes on south bank of river begin to flood near Crestview.
- 12 Residential areas on the south bank of river near Crestview become isolated. Rattlesnake Bluff Road closed.
- 11 Flooding becomes a threat to the Trevor Court and Rattlesnake Bluff areas.
- 10 Some flooding of trailers north of the Okaloosa Correctional Institute. Water surrounds home on Sowel Road.
- 8.5 Water in yards on Sowel Road.
- 8 Minor flooding of low lying areas.



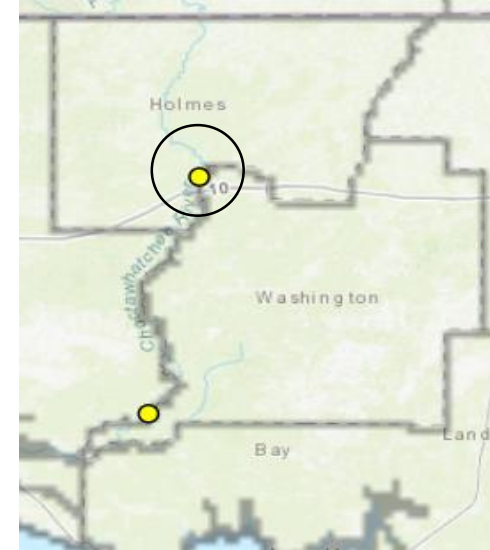
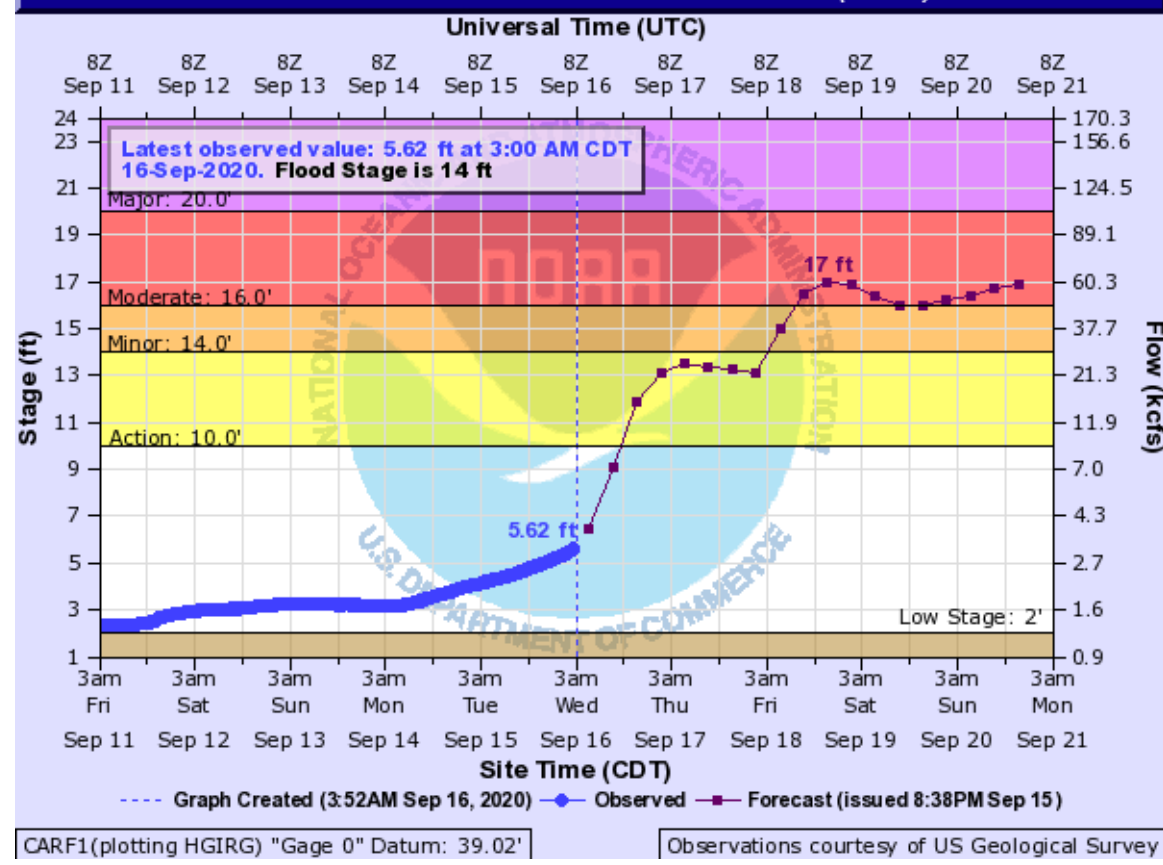
Walton County

Mapped areas of concern based on NWS Impact Statements related to flood category



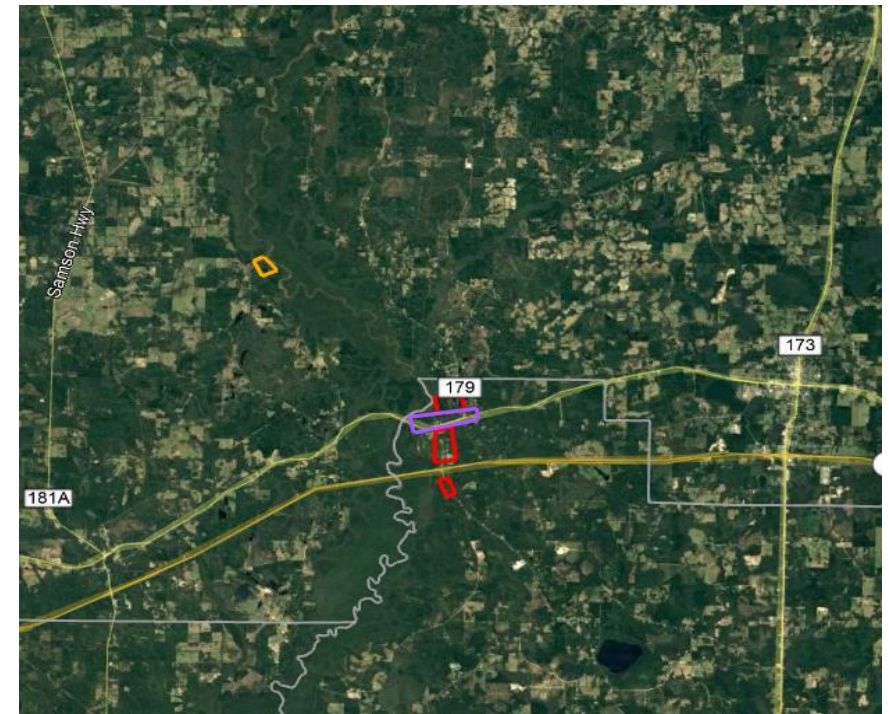
- 26 Record Flooding occurs. Extensive flooding throughout the Shoal River Basin. All roads across the river are impassable. Numerous residents along the river experience significant and destructive flooding.
- 24 Water begins to flood the approach road surface and bridge travel lanes of New Harmony Road. Hinote Road at Deshazo Road floods.
- 22 Water reaches the base of the New Harmony Road bridge. Water begins to cross Williams Road near the Mill Creek Bridge. Nearly all residences on Plantation lane are flooded at this level.
- 20 Numerous residences along Planation Lane are flooded at this level.
- 18 Flood waters cross Plantation Lane in several places isolating many residences. Hinote Road is flooded more than one half mile south of the bridge, restricting access to flooded residences on Dallas Drive.
- 16 The Hinote Road Bridge begins to flood. The road is subject to closure.
- 14 Water begins to overflow into wooded areas along the river from New Harmony Road westward to Laird Road.

CHOCTAWHATCHEE RIVER AT CARYVILLE (US 90)

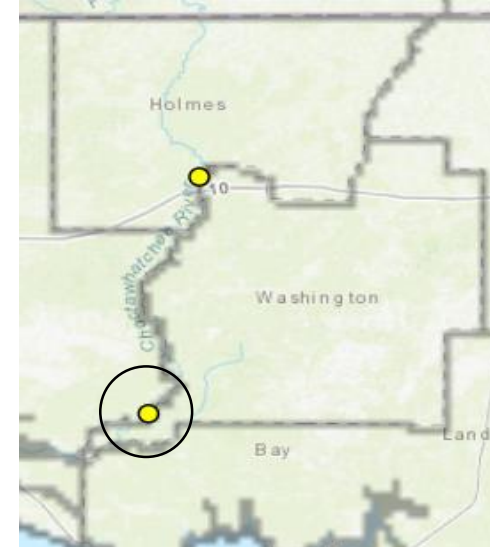
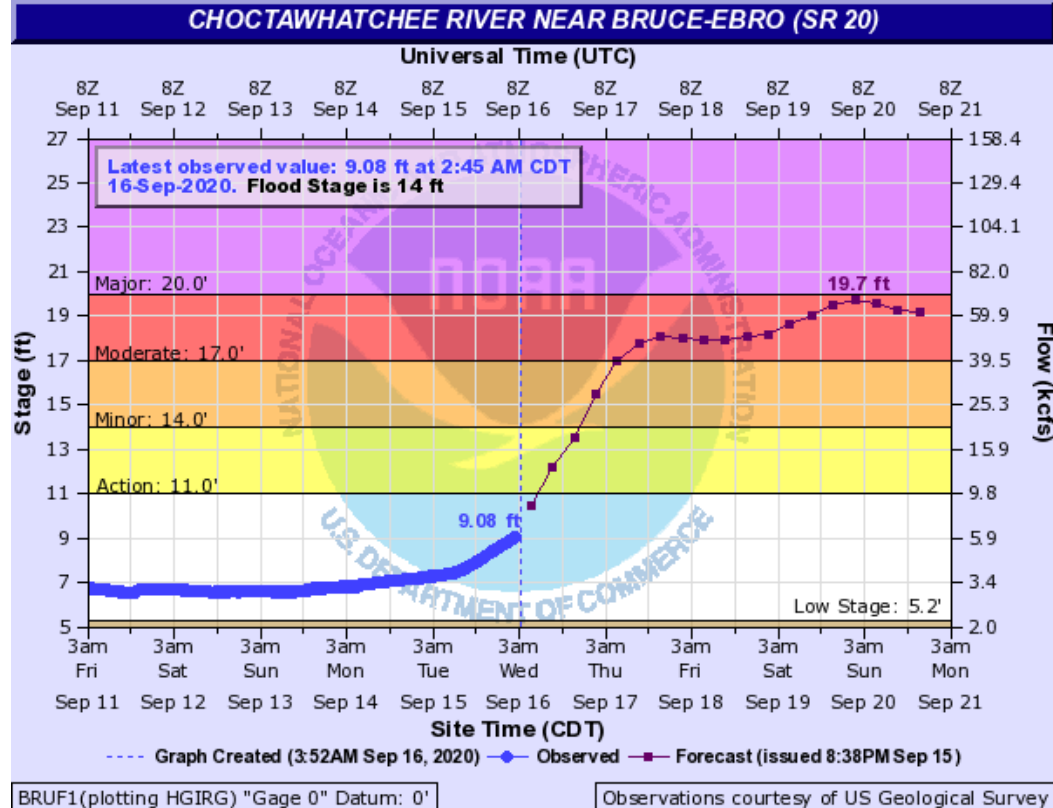


Holmes/ Washington County

Mapped areas of concern based on NWS Impact Statements related to flood category

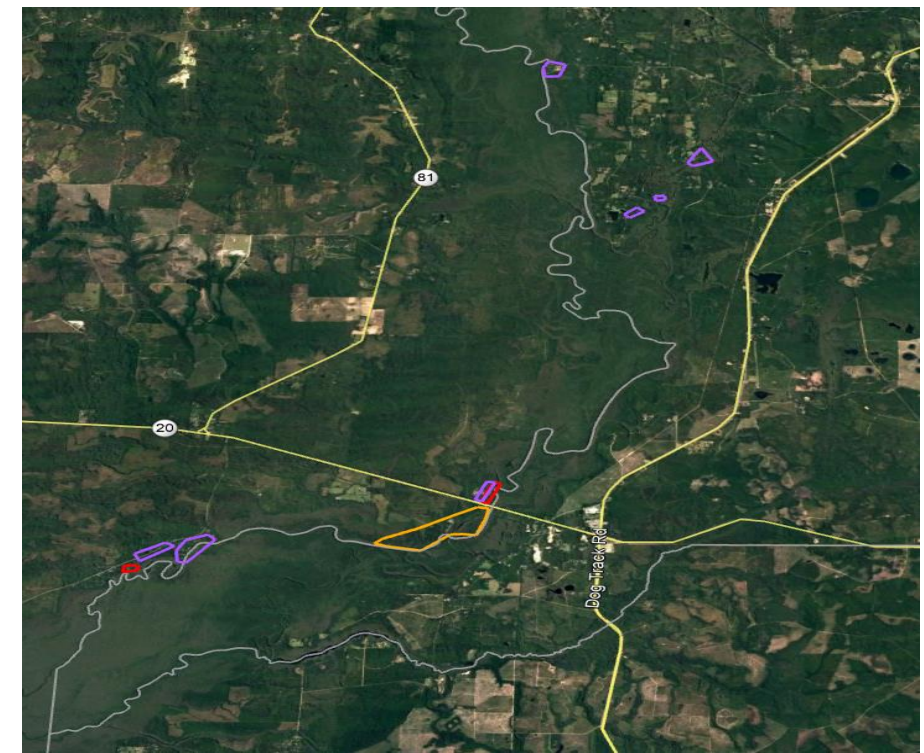


- US 90 is flooded up to a foot deep east of the Choctawhatchee River bridge in Caryville. Water also reaches the base of the US 90 bridge and the highway is subject to closure at this level.
- The access ramps to Interstate 10 at CR 279 begin to flood at this level.
- Water begins to flood US 90 above one half mile east of the bridge in Washington County. Water will cover portions of the railroad in Caryville.
- Water begins to flood areas along CR-279 in Washington County north of Interstate 10. Several structures along the highway south of US-90 begin to flood.
- Water reaches CR-179 in Holmes County near the intersection with Boat Ramp Road.
- Highway 279 south of Interstate 10 begins to flood in Washington County. Several rural roads in the area will also flood.
- In Holmes County, water begins to flood areas off Buck Rodgers Road east of CR-179A in Holmes County. Access to several of the fish camps become inaccessible above this level.
- In Holmes County, Boat Ramp Road south of CR-179 will flood. Access to several of the fish camps off Boat Ramp Road may become inaccessible above this level.
- Extensive lowland flooding will occur.

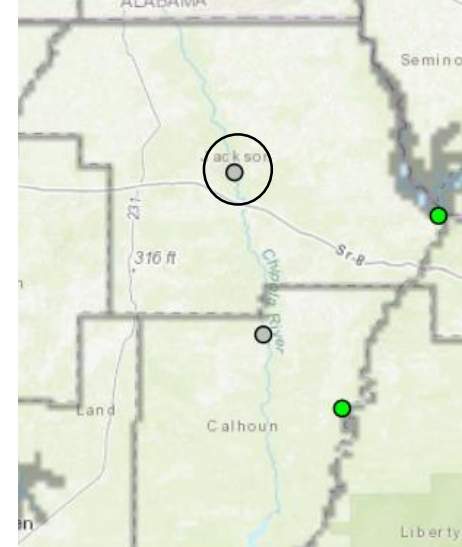


Walton/ Washington County

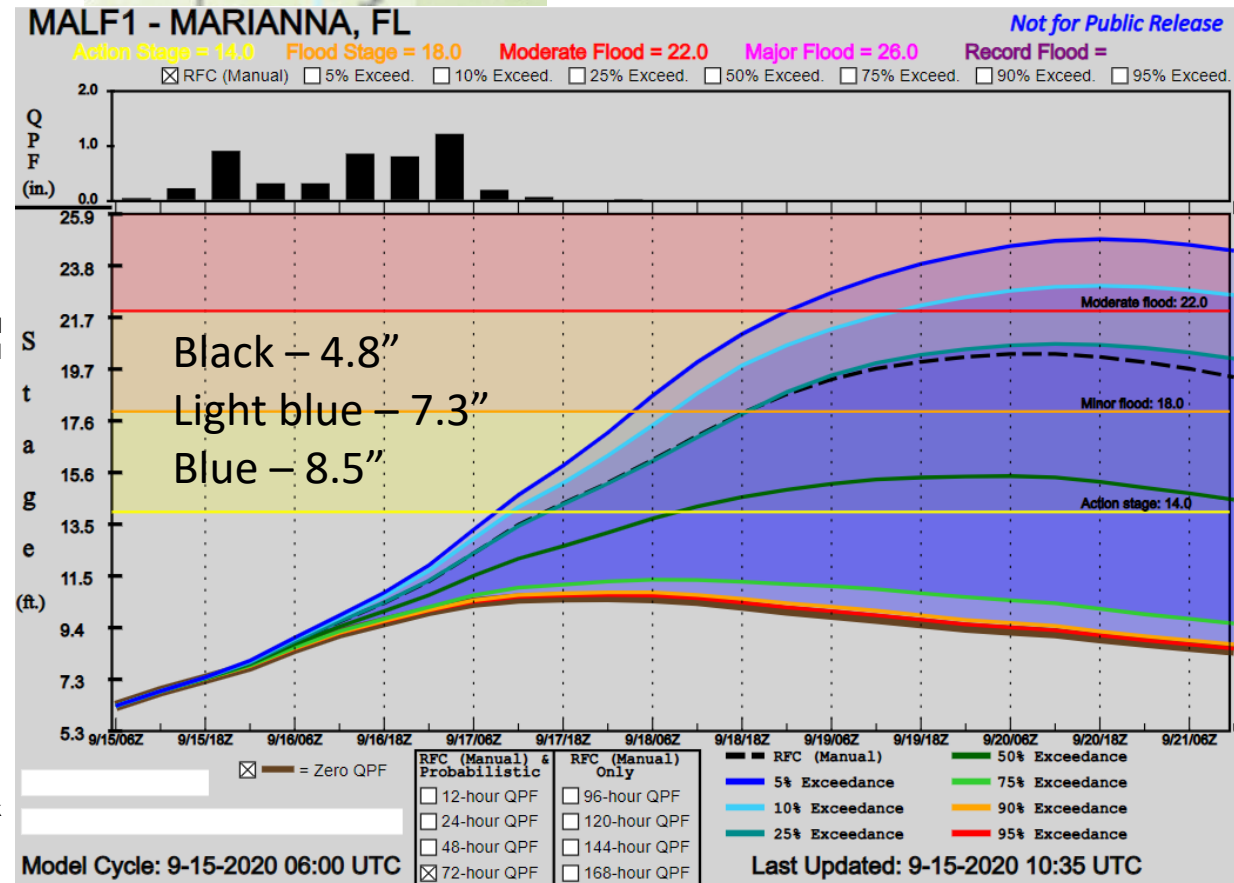
Mapped areas of concern based on NWS Impact Statements related to flood category



- 27 Nearly all structures between Black Creek Road and the west bank of the Choctawhatchee River are flooded. Flooding begins to affect more areas south of Shell Landing Road in Washington County.
- 24 Significant flooding affects numerous structures throughout the lower Choctawhatchee River Basin.
- 22 Structures along Holmes Creek from Millers Ferry Road to the confluence with the Choctawhatchee River in Washington County are prone to flooding above this level.
- 21 In Walton County, flooding impacts multiple structures south of Black Creek Road between Rooks Bluff Road and BH Reddick Road. Flooding expands just north of SR-20 off Howell Bluff Road.
- 20 In Walton County, multiple structures not elevated on BH Reddick Road are flooded. In Washington County, structures at the end of Choctaw Road begin to flood. Flooding begins at Boynton Cutoff Road. Roads near Holmes Creek south of Millers Ferry Road southward to the confluence with the Choctawhatchee River are prone to flooding above this level. Structures on Backwoods Road also begin to flood.
- 19 In Walton County, several structures not elevated on BH Reddick Road flood. Access into the area is severely restricted above this level.
- 18 In Walton County, additional structures on Choctawhatchee River Road and Big Cedar Road not elevated are flooded. A few structures on McCewen Street and Carnation Road begin to flood. Flooding begins just north of SR-20 off Howell Bluff Road affecting a few residences.
- 17 In Walton County, the boat ramp at Big Cedar Road is inaccessible at this level. The boat ramp at the end of McCewen Street floods at this level. Structures not elevated on Choctawhatchee River Road and Big Cedar Road begin to flood.
- 16 Portions of Big Cedar, Cowford, and Choctawhatchee River Roads in Walton County are impassible above this level. Structures in the area not elevated begin flooding. Portions of Choctaw Road in Washington County begin to flood along with Strickland Road in the far southwestern portion of the county.
- 14 Big Cedar, Cowford, and Choctawhatchee River Roads begin to flood in Walton County. Flood waters impact storage areas underneath homes on the west banks of the Choctawhatchee River. Low areas along Strickland Road in Washington County become subject to flooding.



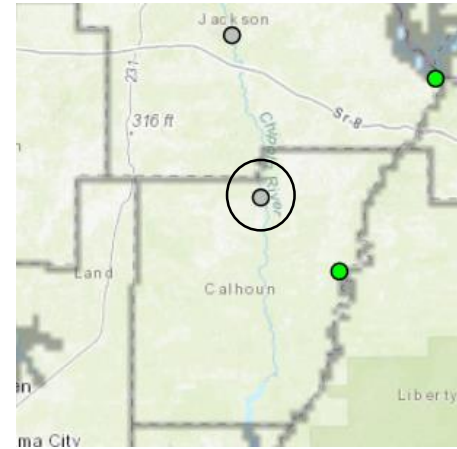
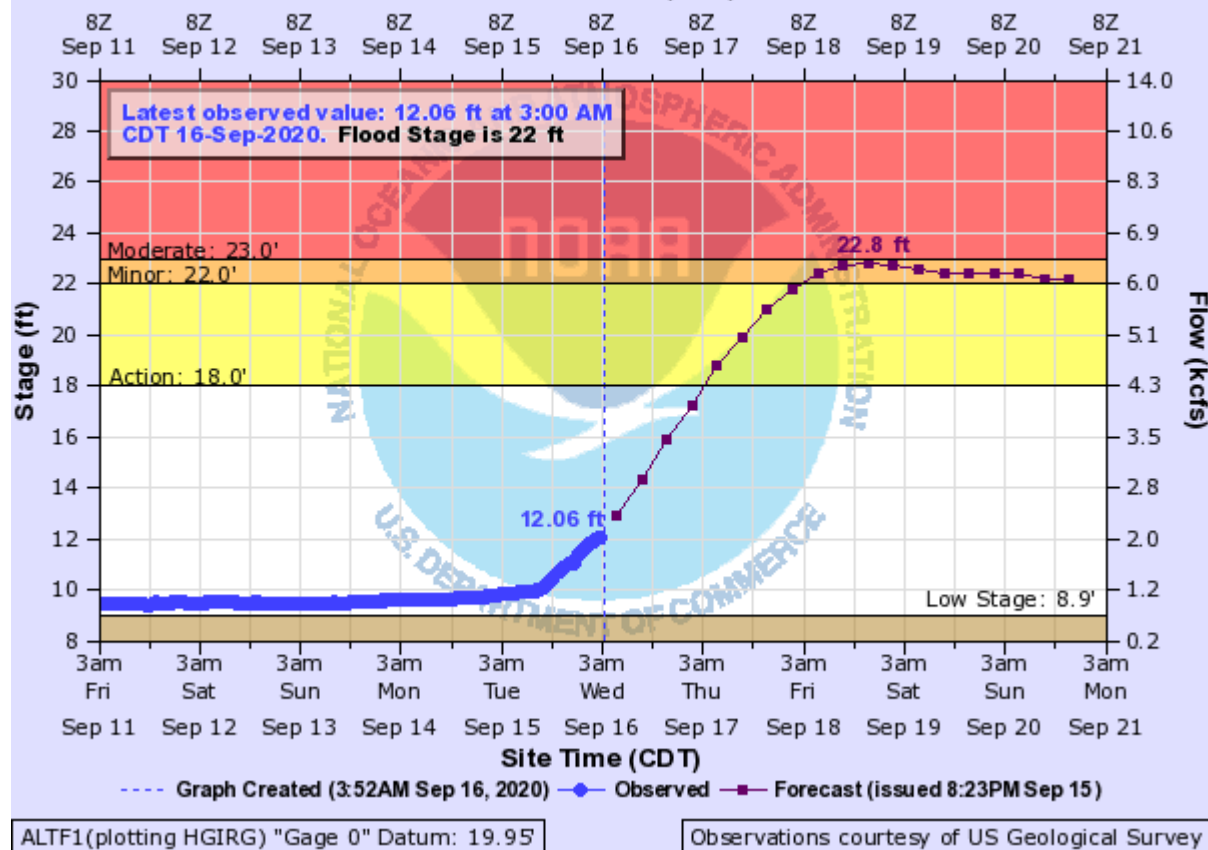
Jackson County



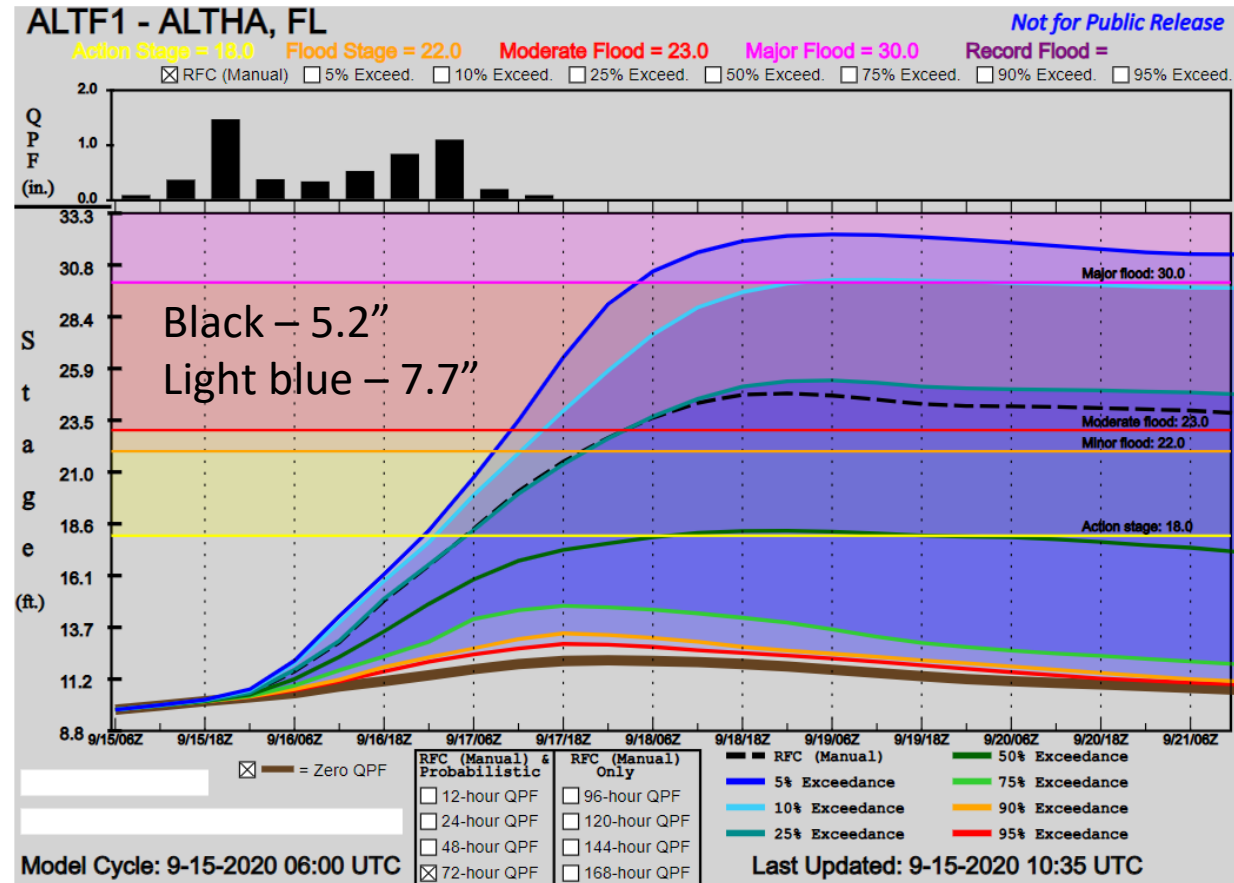
- 30 Water reaches the base of the Caverns Road bridge and the bridge is subject to closure.
- 26 Major flooding begins along the Chipola River in Marianna affecting numerous homes on the west bank of the river. Caverns Road begins to flood on the south side of the bridge near Yancey Boat Ramp. Water reaches the base of the Magnolia Road Bridge and the road is subject to closure.
- 25 Water approaches residences along Noland Street near Kelson Avenue in Marianna.
- 24 Water approaches the base of the Magnolia Road bridge south of Interstate 10.
- 23 Homes in Marianna on Angela Drive are surrounded by flood waters. A home on Cherokee Street south of Putnam Street is also surrounded by flood waters.
- 22 The Citizens Lodge north of town is surrounded by flood waters. Homes in Turtle Bend become inaccessible.
- 21 Extensive flooding occurs in the Citizens Lodge Park. Water begins to approach the lodge.
- 20.5 Flooding increases south of Interstate 10 with areas near Magnolia Road beginning to flood. Water begins to surround several homes off Turtle Bend Lane. Access into the area is severely restricted.
- 20 Water spreads out across the flood plain north of Marianna near Caverns Road inundating much of the Citizens Lodge Park.
- 19 The Florida Caverns is subject to closure. Water begins to flood Old US Road east of downtown near Bridgewood Rive. Flooding increases at Turtle Bend Lane beginning to flood primary access into the area.
- 18.5 Water begins to overtop the bank at Turtle Bend Lane.
- 18 Water begins to overflow into low lying areas north of town near the Florida Caverns. The southern half of the Citizens Lodge Park begins to flood. The Magnolia Road boat ramp begins to flood.
- 16 The Yancey Boat Ramp off Caverns Road floods.

CHIPOLA RIVER NEAR ALTHA (CR 274)

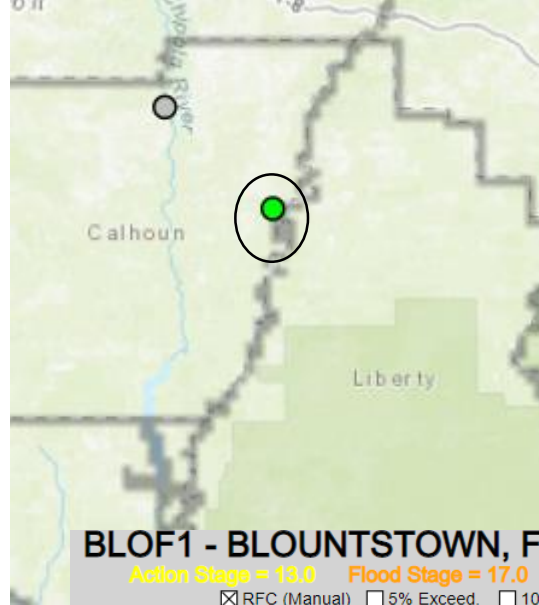
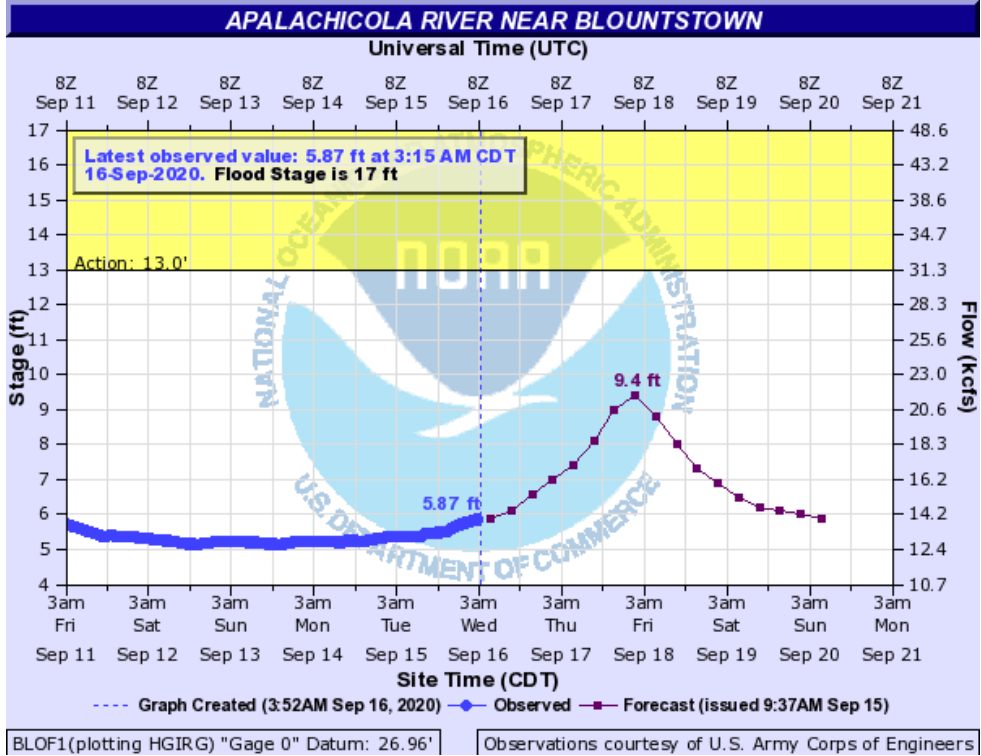
Universal Time (UTC)



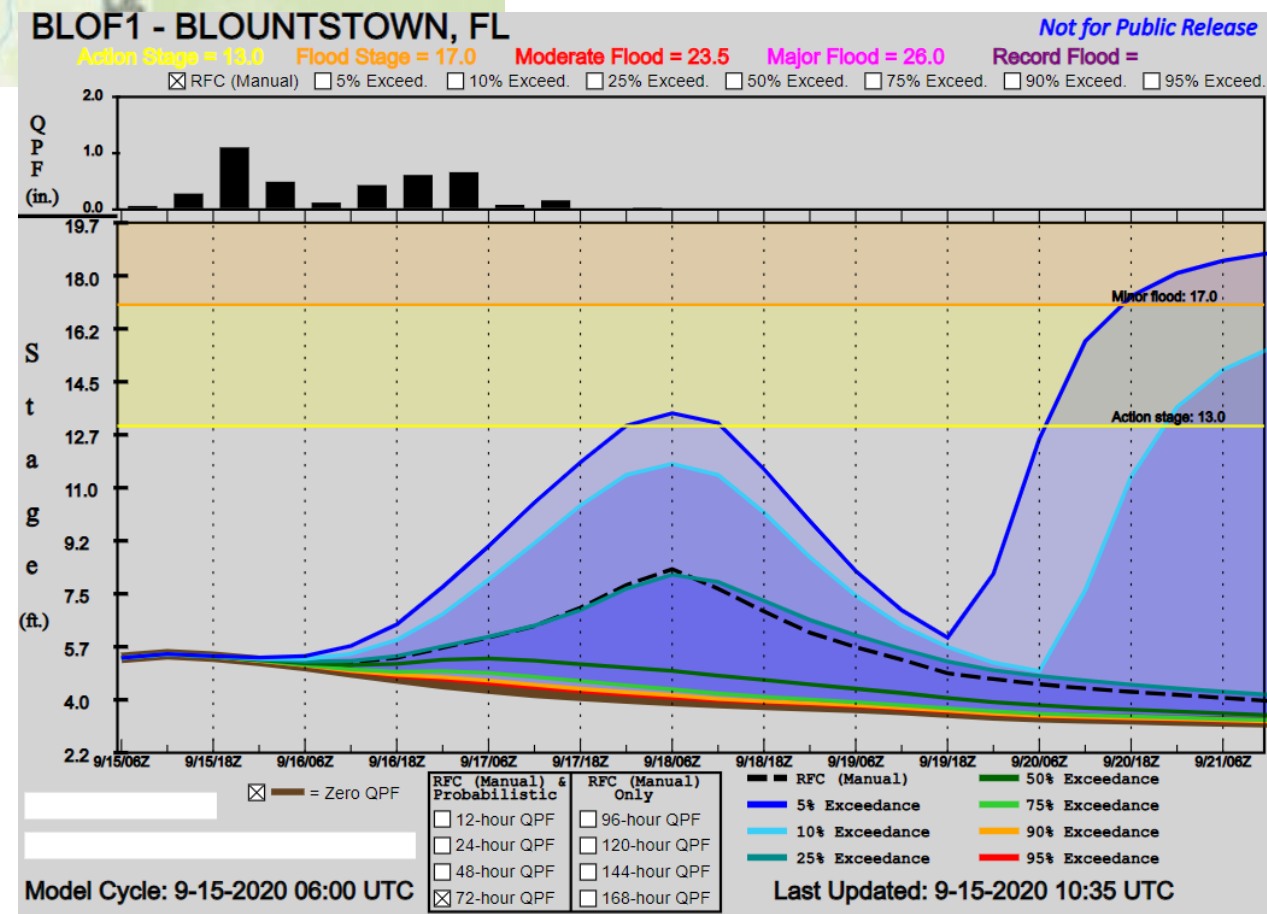
Calhoun County



- 30 Major flood damage will occur.
- 28.5 Water will reach the highway 274 bridge and approach the road.
- 23 Water will start to affect houses and mobile homes in the flood plain downstream from the gage. A few fish camps downstream of highway 20 will be affected by flood water.
- 22 Minor lowland flooding will occur. Lamb Eddy Road near the boat ramp will flood.

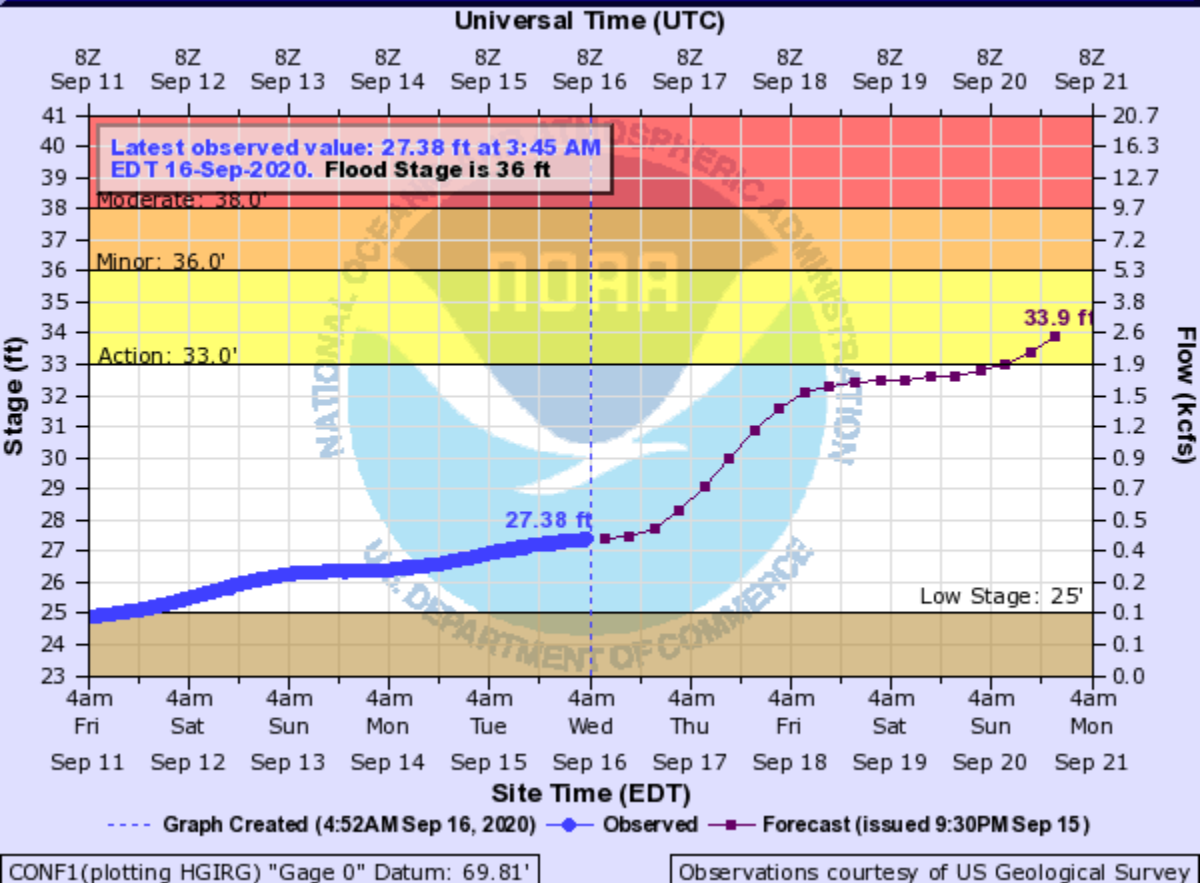


Secondary river flooding would occur next week as water moves downstream from AL/Ga



- 24.1 Water begins to flood NE Magnolia Street in Pine Island east of NE Hickory Street. In Blountstown, water begins to surround homes east of SE Pear Street to SE River Street. In Liberty County, flooding expands at the Bristol Boat Ramp affecting more residences.
- 24 The Wewahitchka area in Gulf County will be affected downstream of Blountstown. Minor house flooding will occur at Kentucky Landing, Chipola Cutoff, Red Bull Island, Douglas Landing, Brants Landing, Willis Landing and Howards Creek area. The 24.0 ft level at Blountstown may at time not be representative of river levels in these areas due to tidal effects, winds or local rainfall and should be used with caution.
- 23.5 Water will reach the walkway to Neal Lumber Office in Blountstown. Houses downstream at the Chipola Cutoff in the Wewahitchka area will begin to flood. The 23.5 foot level at Blountstown may at times not be representative of river levels in these areas due to tidal effects, winds, or local rainfall and should be used with caution.
- 23 Water crosses the low water crossing on Parrish Lake East 3 miles before the end of the road in Calhoun County.
- 22 Minor lowland flooding will occur on many roads including Byrd Parker Road, Warmouth Drive, Gaskin Park, the end of Lake Grove Road, Elm Street on Red Bull Island, and Lower Landing on Howards Creek in Gulf County. The 22.0 ft level at Blountstown may at times not be representative of river levels in the these areas due to tidal effects, winds, or local rainfall and should be used with caution. In Liberty County, a home on River Road downstream of the Bristol Boat Ramp begins to flood on the lower level.
- 21 Ocheessee Landing in Calhoun County is flooded, restricting access to the boat ramp and parking area. Kennedy Creek at Forest Road 115 in Liberty County floods.
- 20 The boat ramp at Estiffanulga in Liberty County floods.
- 19 Minor lowland flooding will occur at Douglas Landing and Willis Landing Campgrounds in Gulf County. The 19.0 ft level at Blountstown may at times not be representative of river levels in these areas due to tidal effects, winds, or local rainfall and should be used with caution.
- 18 Forest Road 115 in Liberty County at River Styx Campground will flood, isolating access to the site.
- 17 John Redd Road in Calhoun County will begin to flood one half mile west of the boat landing, restricting access to the area. The lower portion of the boat ramp in Blountstown floods at this level.

OCHLOCKNEE RIVER NEAR CONCORD (CR 12)

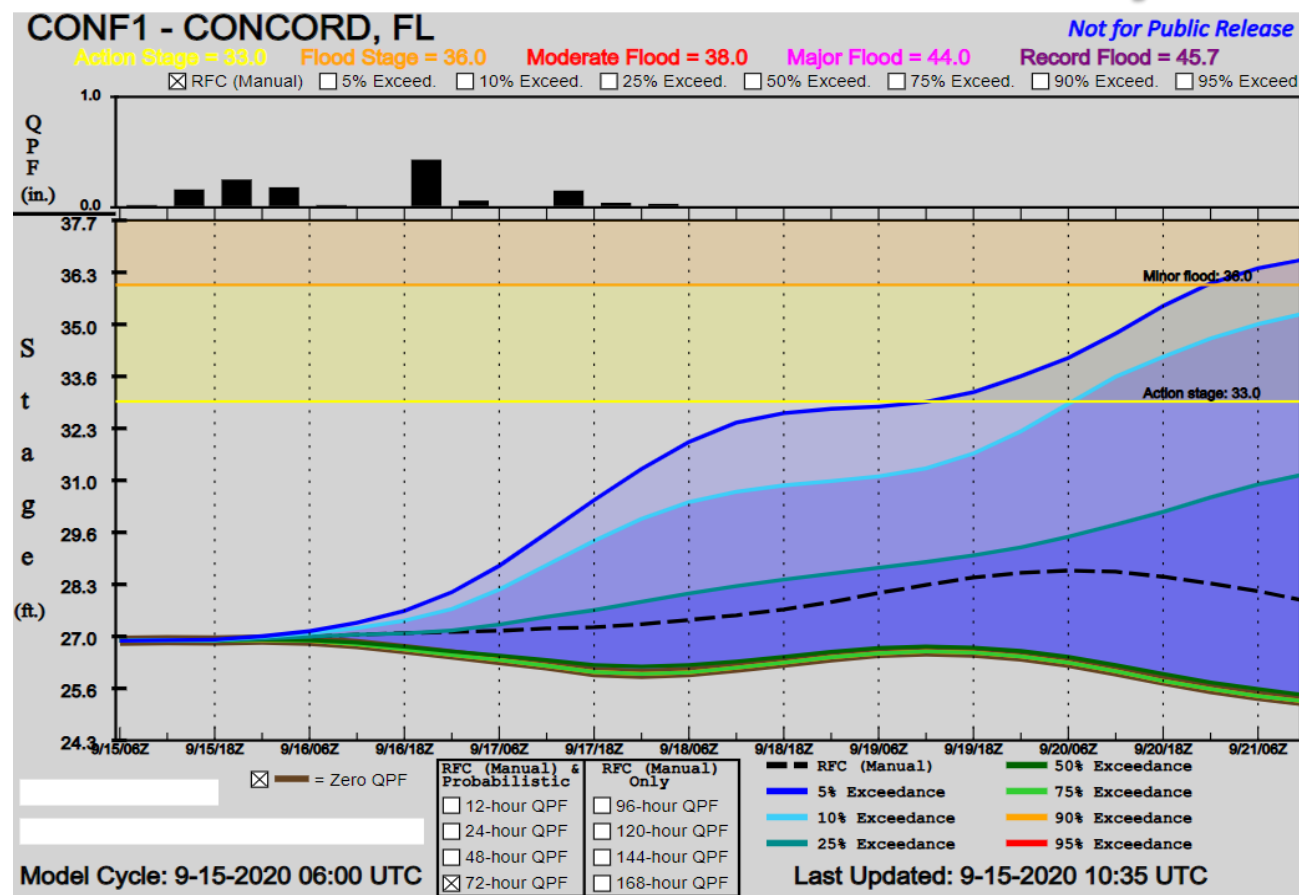


- 44 Major flood level. Homes flood along county highway 12.
- 38.5 County highway 12 may become closed to vehicular traffic.
- 36 Primary access to homes along county highway 12 on the east bank of the river in Leon County may become restricted.

*Downstream flooding near Havana and Bloxham would occur next week



Leon/ Gadsden County





Florida Outlook

Florida Outlook:

- **Sally re-strengthened into a Category 2! Eye wall is moving through Pensacola this morning with damaging winds and surge**
- **Flash Flood Emergency ongoing in the western Panhandle!**
- **Hurricane Warnings:** Escambia, Santa Rosa, Okaloosa
- **Tropical Storm Warnings:** Walton, Bay, coastal Gulf, Washington, and Holmes
- **Storm Surge Warnings:** Escambia, Santa Rosa, Okaloosa, Walton (4-7' of surge)
- Hurricane force wind gusts are occurring in the western Panhandle and sustained hurricane force winds (75-85 mph) are moving into the area.
- Sustained tropical storm force winds are possible inland in the eastern Panhandle later today.
- So far, 8-16" of rain has fallen across coastal areas of the Panhandle and 6-12" inland.
- Additional rainfall totals of 10-20" forecast for the western Panhandle and 6-12" in the eastern Panhandle.
- Significant river flooding is expected over the next few days in the Panhandle. **Moderate to Major River Flooding.**
- **Flash Flood Watches are in effect** for the Panhandle until Thursday morning.
- Isolated tornadoes are possible in the Panhandle and Big Bend today. A Slight Risk of Severe Weather (level 2 of 5) is in place.
- A **Tornado Watch** is in effect until 6 AM CT / 7 AM ET for the Panhandle and western Big Bend. **An additional watch will be issued!**
- **Coastal Flood Advisories** are in effect for the rest of the Panhandle/Big Bend (1-3' of surge).
- High surf (8-12'), dangerous rip currents, and beach erosion are expected at Panhandle beaches for the next few days.
- Paulette will generate swells that reach the Atlantic beaches, elevating the rip current risk through the end of the week.
- Direct impacts from any other systems in the tropics are not expected.

The next briefing packet will be issued later Wednesday morning with the 11AM advisory. For the latest information on the tropics, please visit the National Hurricane Center website at www.hurricanes.gov.



TROPICAL UPDATE



Created by:

Michael Spagnolo, Deputy State Meteorologist

Michael.Spagnolo@em.myflorida.com

State Meteorological Support Unit

Florida Division of Emergency Management

Users wishing to subscribe (approval pending) to this distribution list, register at:

https://public.govdelivery.com/accounts/FLDEM/subscriber/new?topic_id=SERT_Met_Tropics.

Other reports available for subscription are available at:

<https://public.govdelivery.com/accounts/FLDEM/subscriber/new?preferences=true>