



TROPICAL UPDATE



11:00 AM EDT

Monday, August 31, 2020

Invest 90L off SE Coast (70%),

Invest 99L in Caribbean (80%),

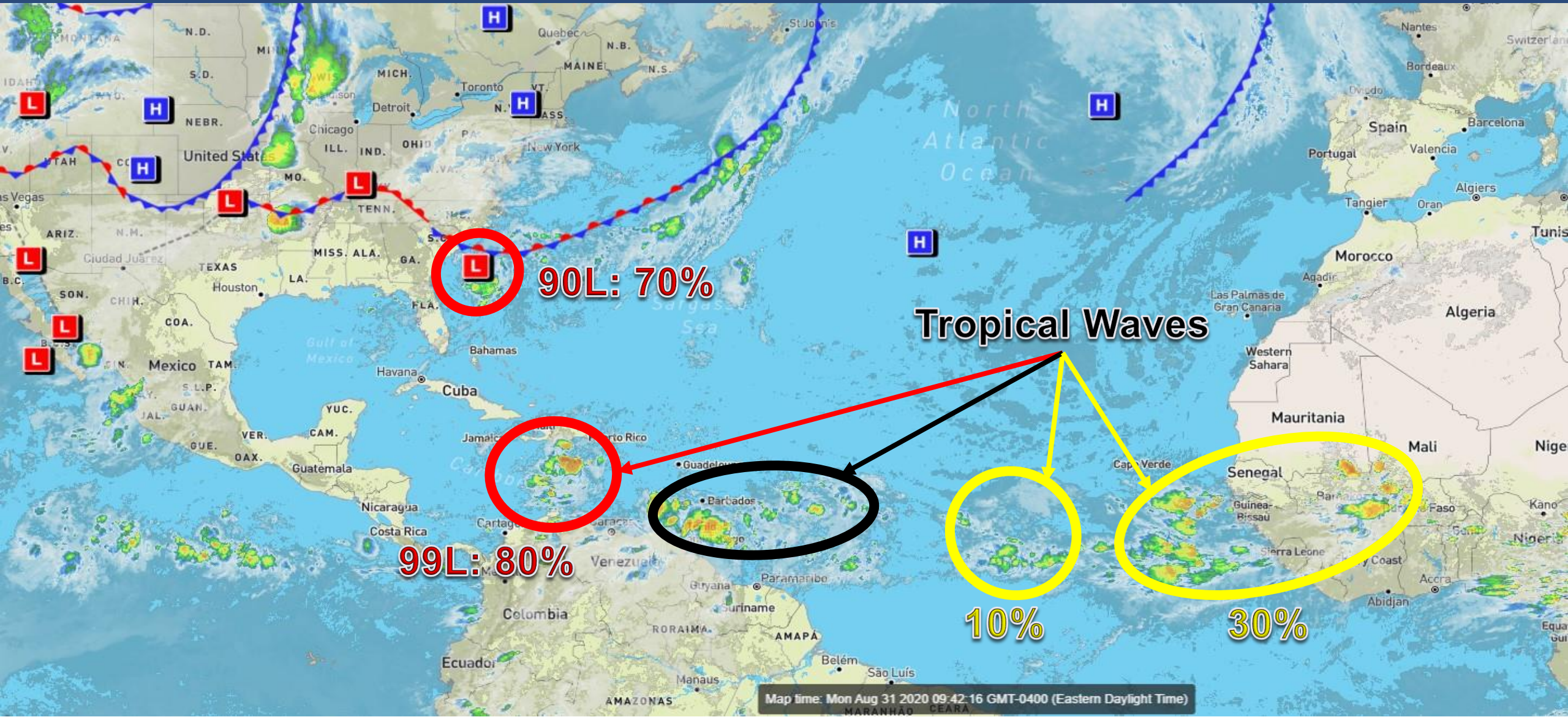
Cabo Verde Wave (10%) & Africa Wave (30%)

This update is intended for government and emergency response officials, and is provided for informational and situational awareness purposes only. Forecast conditions are subject to change based on a variety of environmental factors. For additional information, or for any life safety concerns with an active weather event please contact your County Emergency Management or Public Safety Office, local National Weather Service forecast office, or visit the National Hurricane Center website at www.hurricanes.gov.



Atlantic Basin Satellite Image

Chance of development: — None — Low — Medium — High



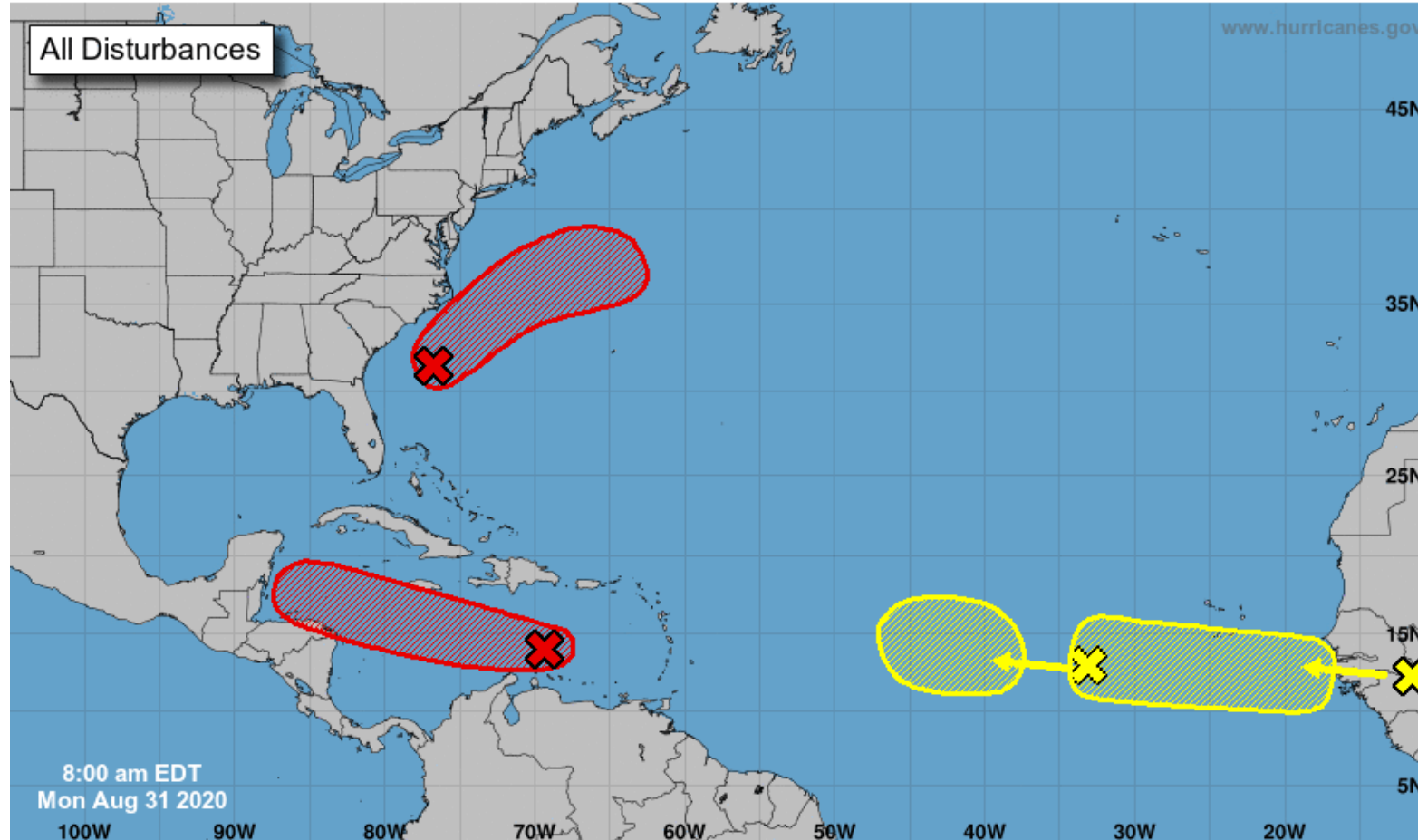


Tropical Weather Outlook

Possible Areas of Development During the Next 5 Days ([LINK](#))



Five-Day Graphical Tropical Weather Outlook National Hurricane Center Miami, Florida



Current Disturbances and Five-Day Cyclone Formation Chance: < 40% 40-60% > 60%
Tropical or Sub-Tropical Cyclone: Depression Storm Hurricane
 Post-Tropical Cyclone or Remnants



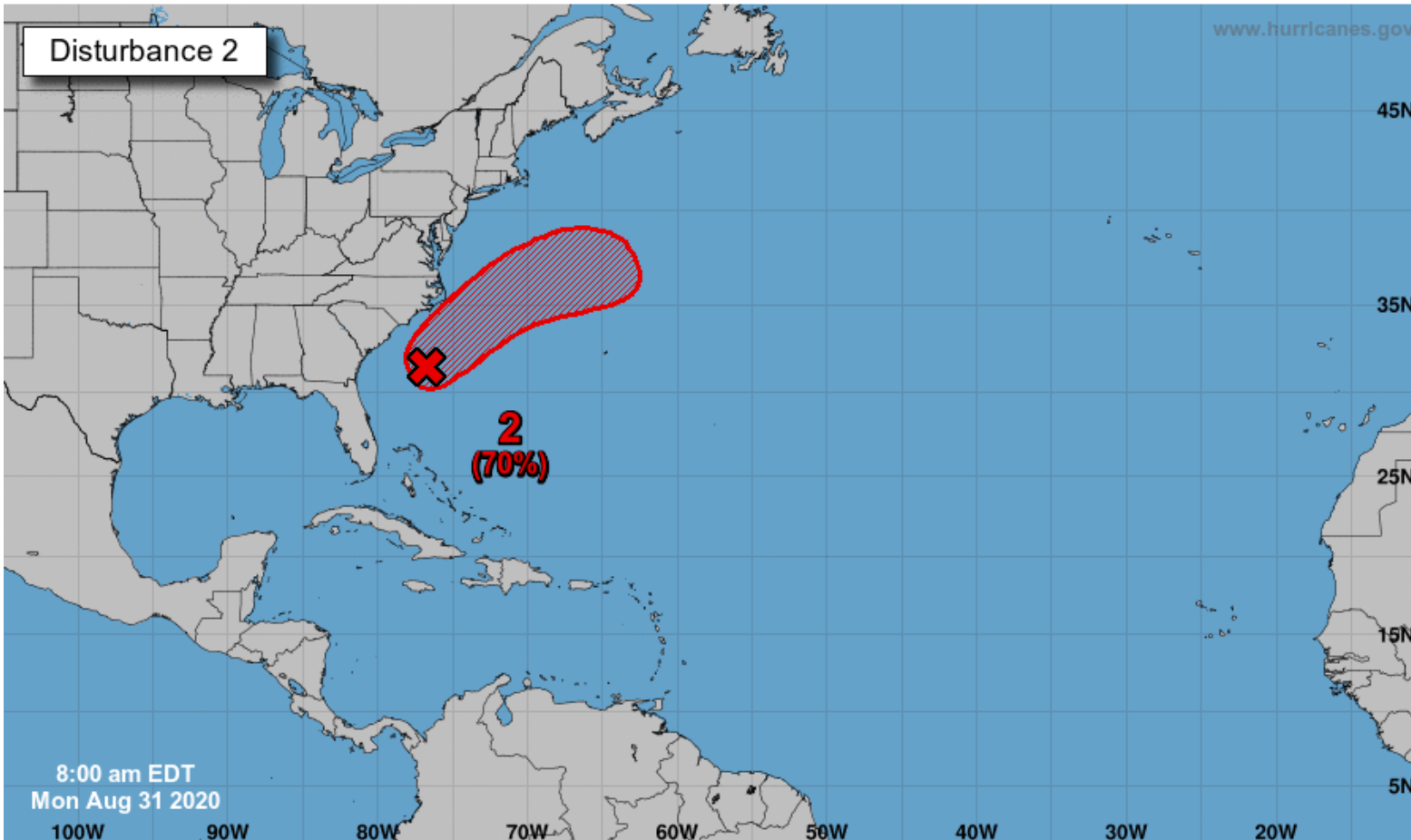
Tropical Weather Outlook

Possible Area of Development During the Next 5 Days ([LINK](#)) – Invest 90L



Five-Day Graphical Tropical Weather Outlook

National Hurricane Center Miami, Florida



An area of low pressure is located about 150 miles south-southeast of Wilmington, North Carolina.

This system has become better organized overnight, and a tropical depression is likely to form within a day or so while the system moves northeastward, near but offshore of the southeastern coast of the United States, and then away from land.

An Air Force Reserve Hurricane Hunter aircraft is scheduled to investigate the system this afternoon if necessary.

This system poses no threat to Florida

***Formation chance through 48 hrs...high...70%**

***Formation chance through 5 days...high...70%**

Current Disturbances and Five-Day Cyclone Formation Chance: < 40% 40-60% > 60%
Tropical or Sub-Tropical Cyclone: Depression Storm Hurricane
 Post-Tropical Cyclone or Remnants

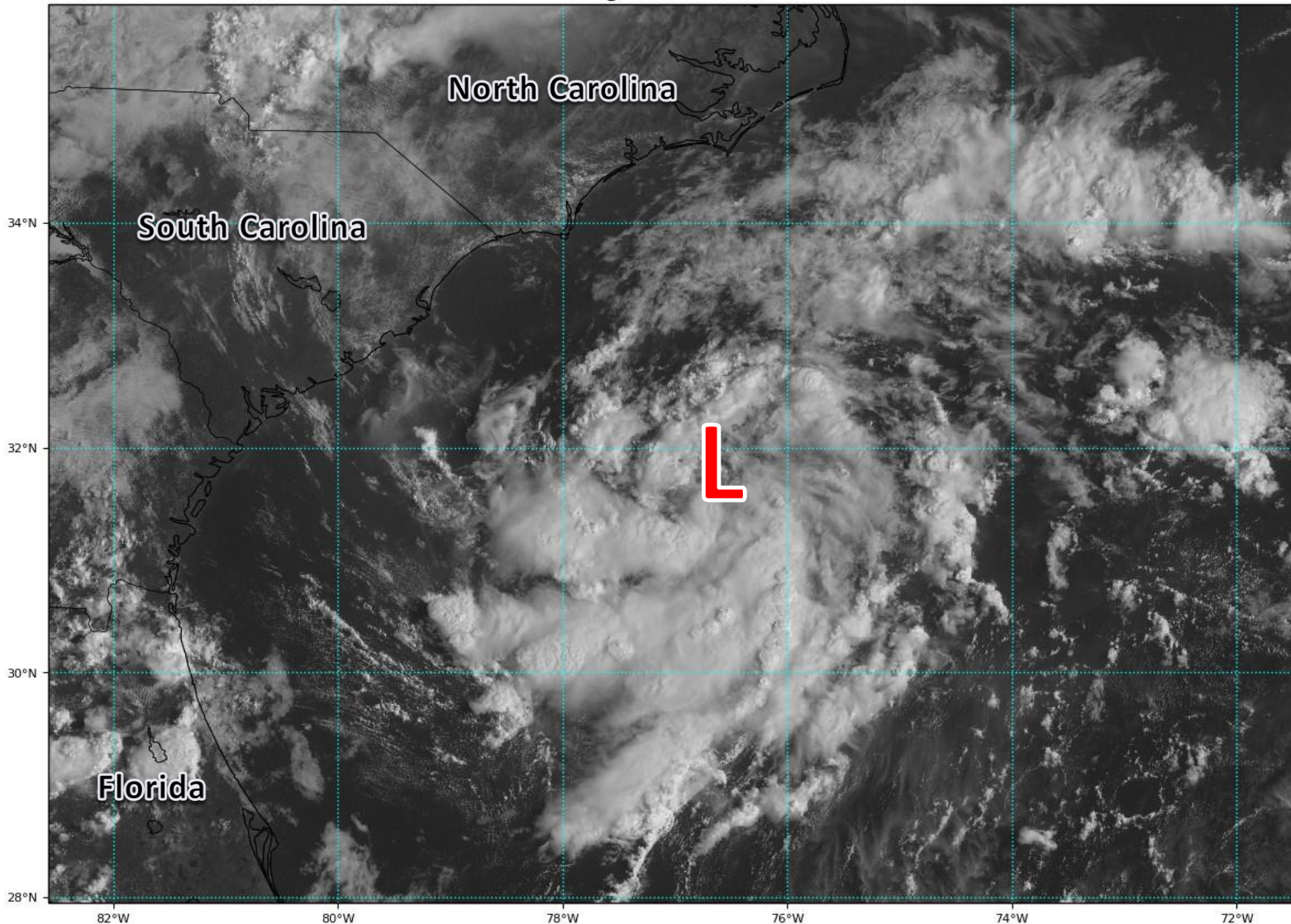


Satellite Imagery

Southwest Atlantic – Invest 90L

GOES-16 Channel 2 (visible) Reflectance at 13:37Z Aug 31, 2020

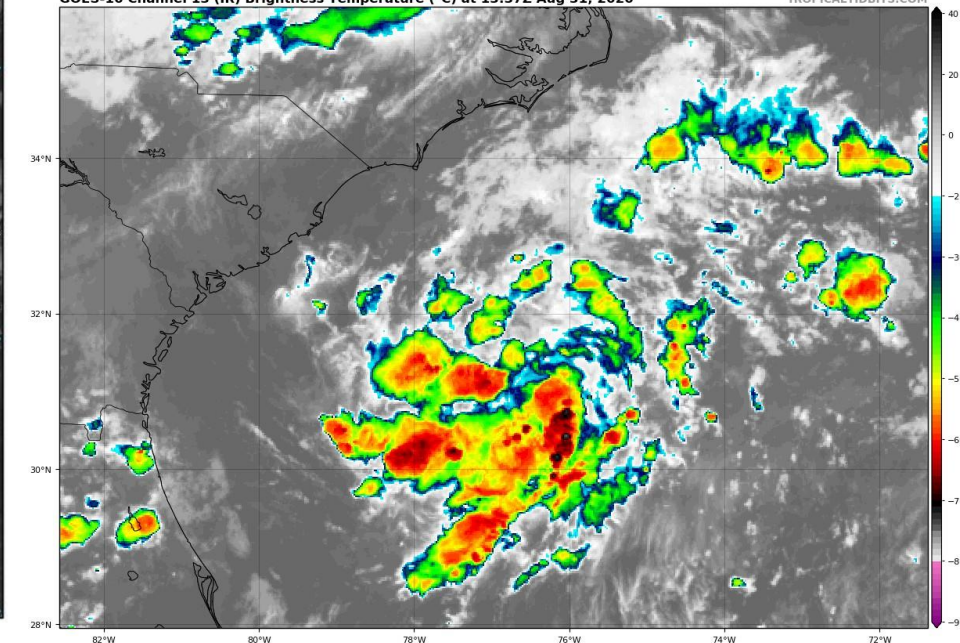
TROPICALTIDBITS.COM



An area of low pressure has developed a few hundred miles off the coast of the southeastern United States. It is becoming better organized and a tropical depression appears to be forming.

GOES-16 Channel 13 (IR) Brightness Temperature (°C) at 13:37Z Aug 31, 2020

TROPICALTIDBITS.COM





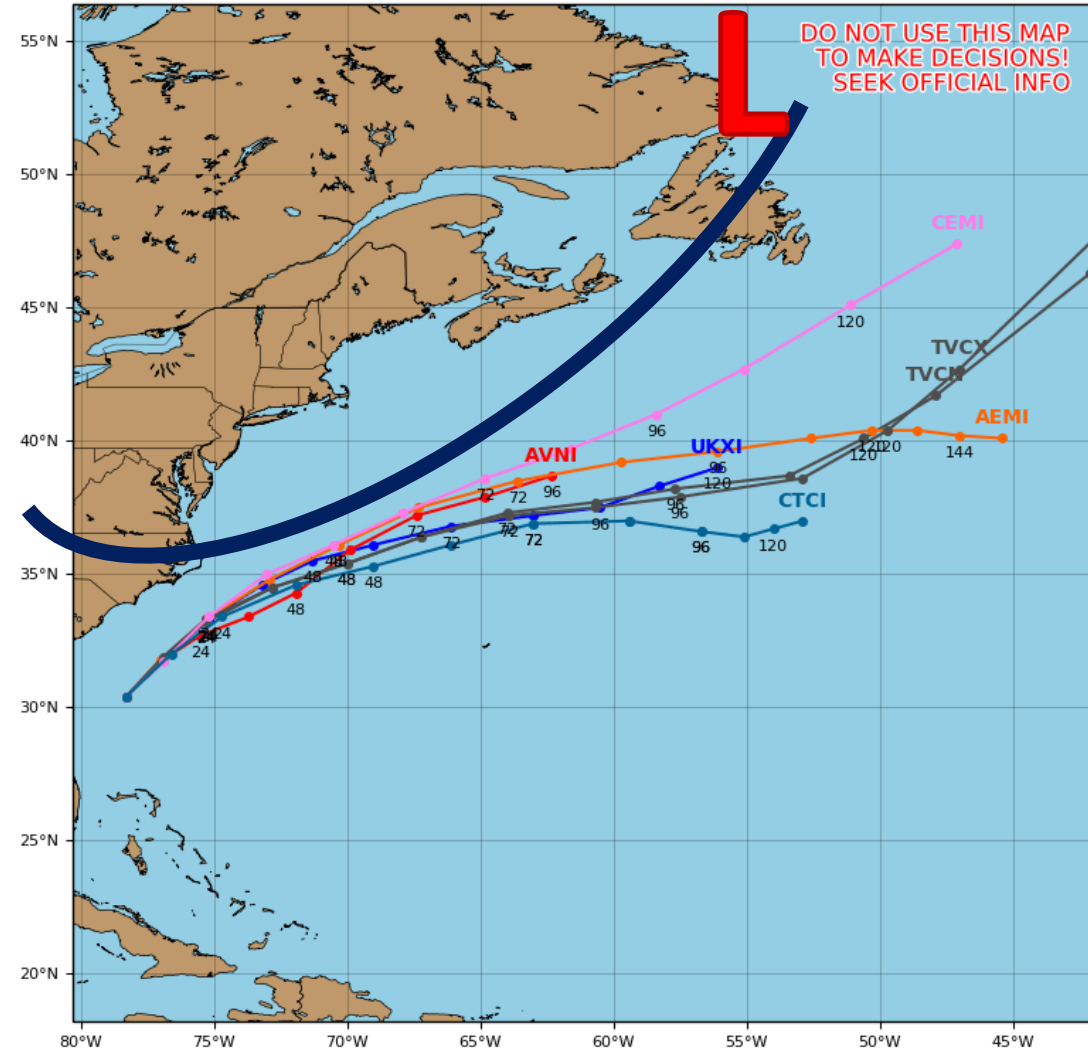
Model Forecast Tracks

Dynamical and Statistical Models – Invest 90L

Invest 90L Model Track Guidance

Initialized at 06z Aug 31 2020

Levi Cowan - tropicaltidbits.com

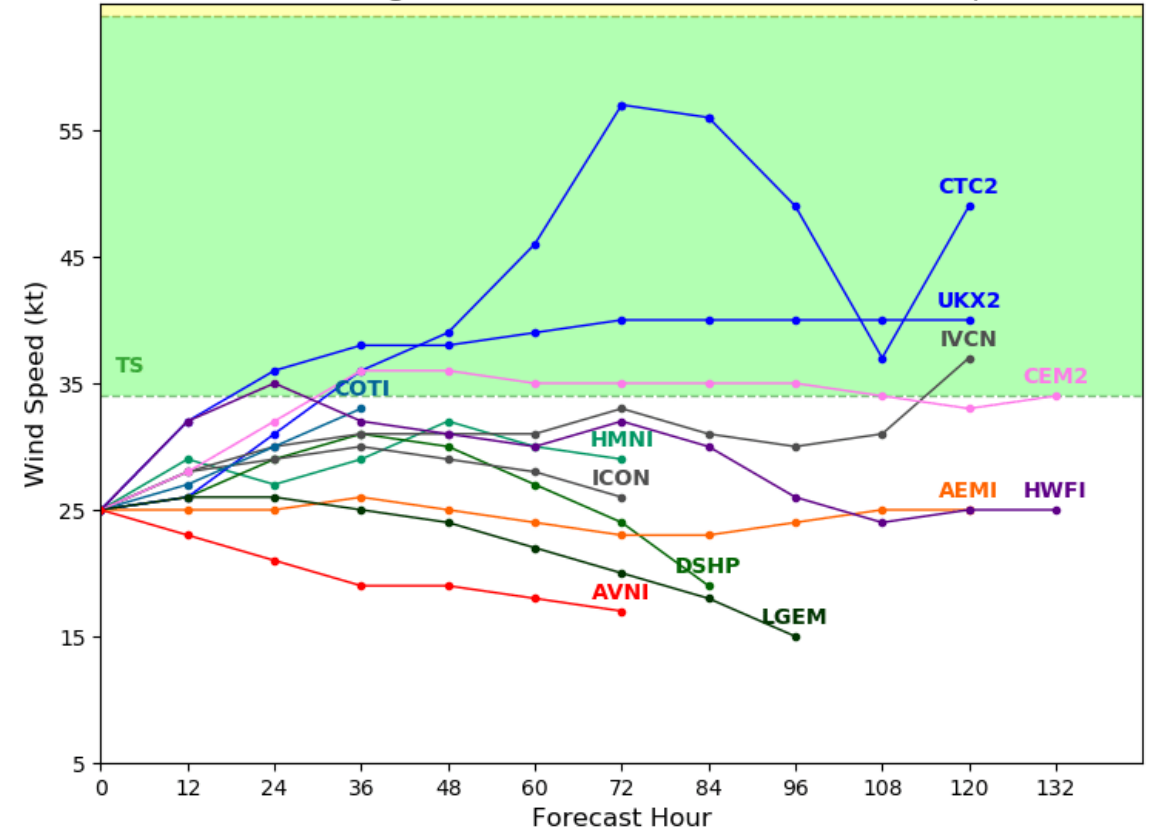


A weak system is expected to develop and get picked up by a cold front and sent out to sea, over the open waters of the North Atlantic.

Invest 90L Model Intensity Guidance

Initialized at 12z Aug 31 2020

Levi Cowan - tropicaltidbits.com





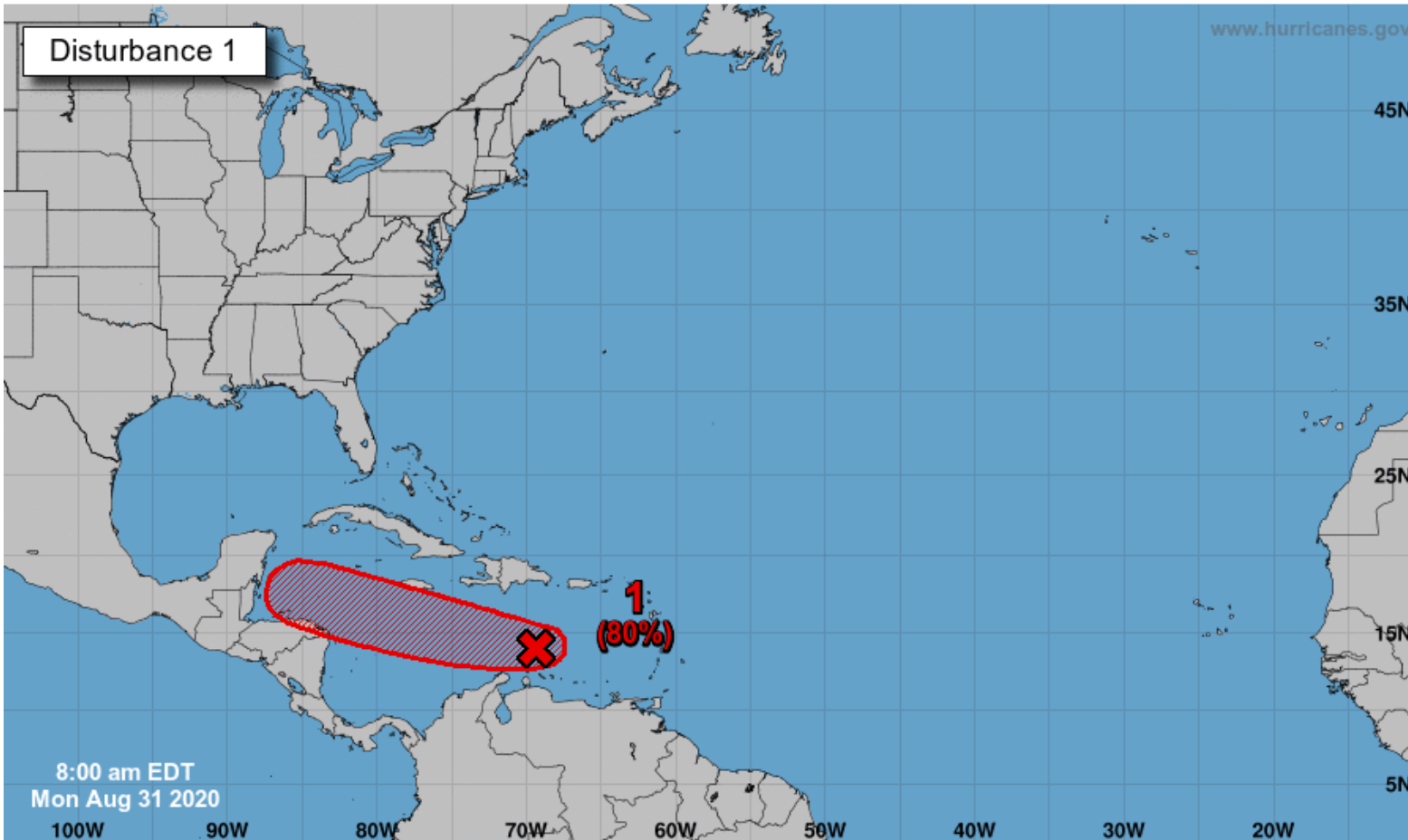
Tropical Weather Outlook

Possible Area of Development During the Next 5 Days ([LINK](#)) – Invest 99L



Five-Day Graphical Tropical Weather Outlook

National Hurricane Center Miami, Florida



Current Disturbances and Five-Day Cyclone Formation Chance:

✕ < 40%	✕ 40-60%	✕ > 60%
○ Tropical or Sub-Tropical Cyclone: Depression	⚡ Storm	⚡ Hurricane
⊗ Post-Tropical Cyclone or Remnants		

A broad area of low pressure associated with a tropical wave over the central Caribbean Sea has changed little in organization since yesterday.

However, environmental conditions are expected to gradually become more conducive for development, and a tropical depression is likely to form during the next couple of days while the system moves westward at 15 to 20 mph.

Strong high pressure will build in over Florida over the next few days, keeping the system south and into Central America and the Yucatan Peninsula later this week.

This system does not pose a threat to Florida, but should continue to be monitored.

***Formation chance through 48 hrs...high...70%**

***Formation chance through 5 days...high...80%**

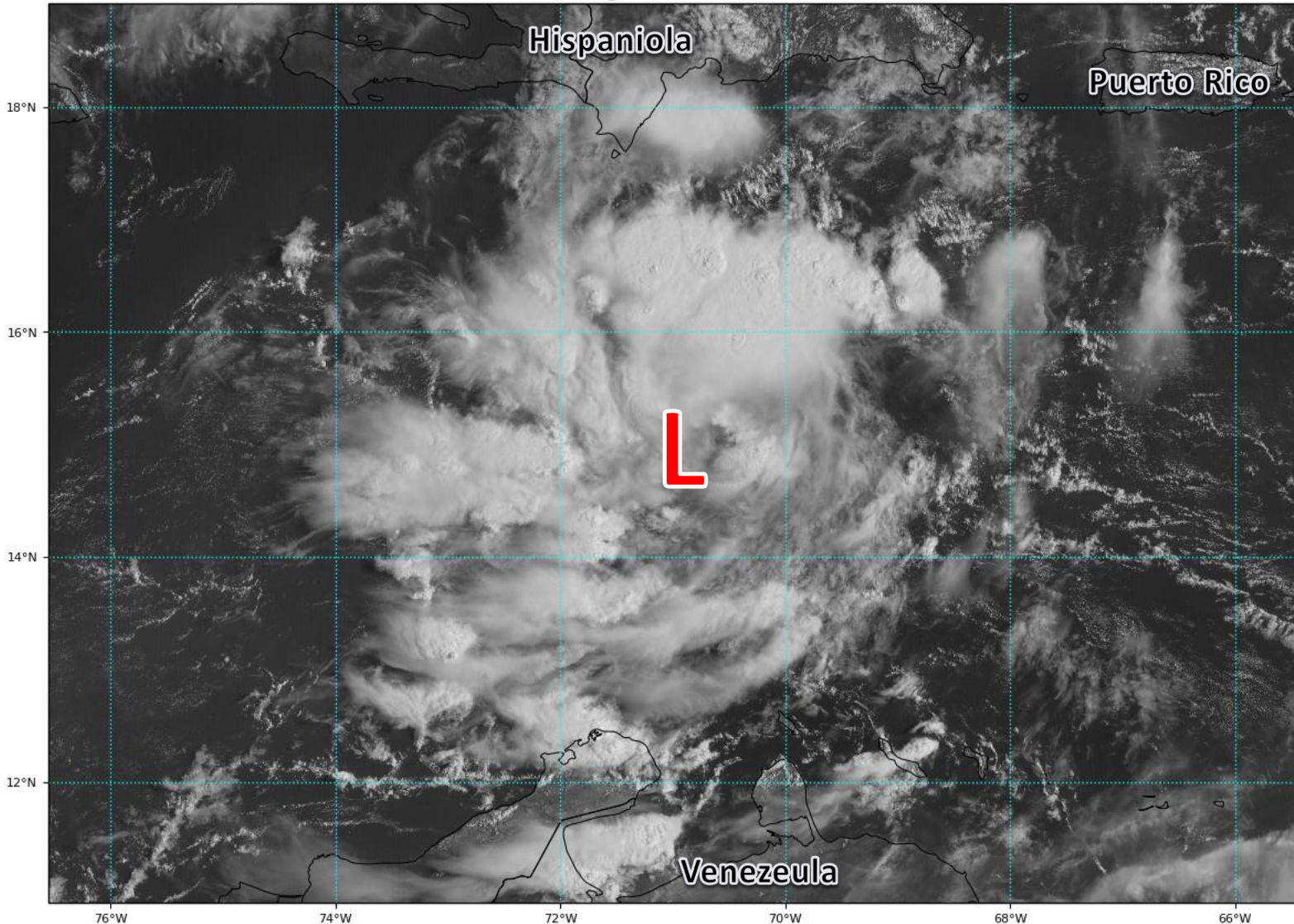


Satellite Imagery

Central Caribbean – Invest 99L

GOES-16 Channel 2 (visible) Reflectance at 13:35Z Aug 31, 2020

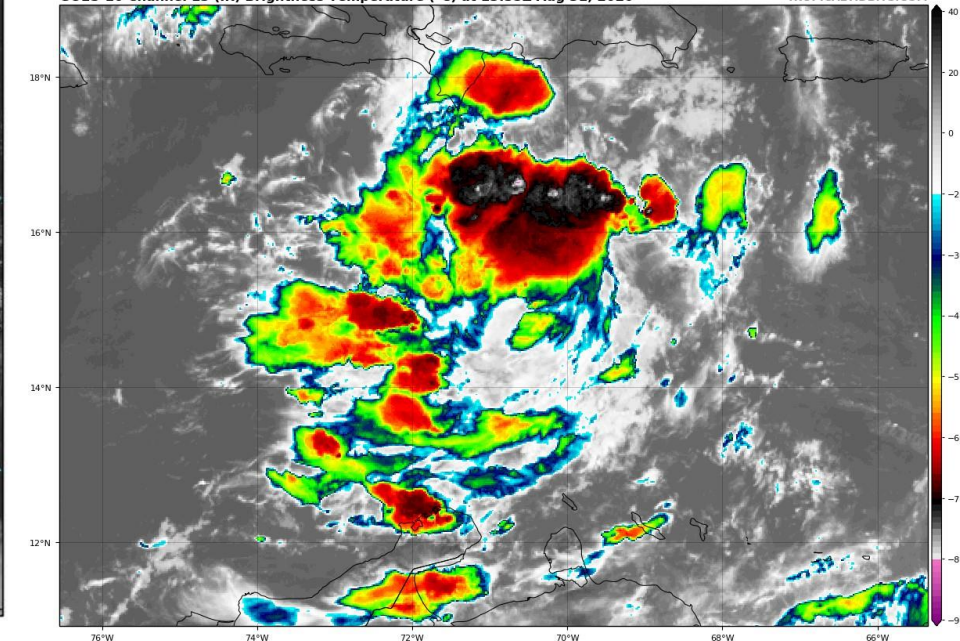
TROPICALTIDBITS.COM



A broad area of low pressure has formed associated with a tropical wave, but it remains disorganized with much of the thunderstorms sporadic and away from the center. However, gradual organization is expected to continue as it moves west.

GOES-16 Channel 13 (IR) Brightness Temperature (°C) at 13:35Z Aug 31, 2020

TROPICALTIDBITS.COM





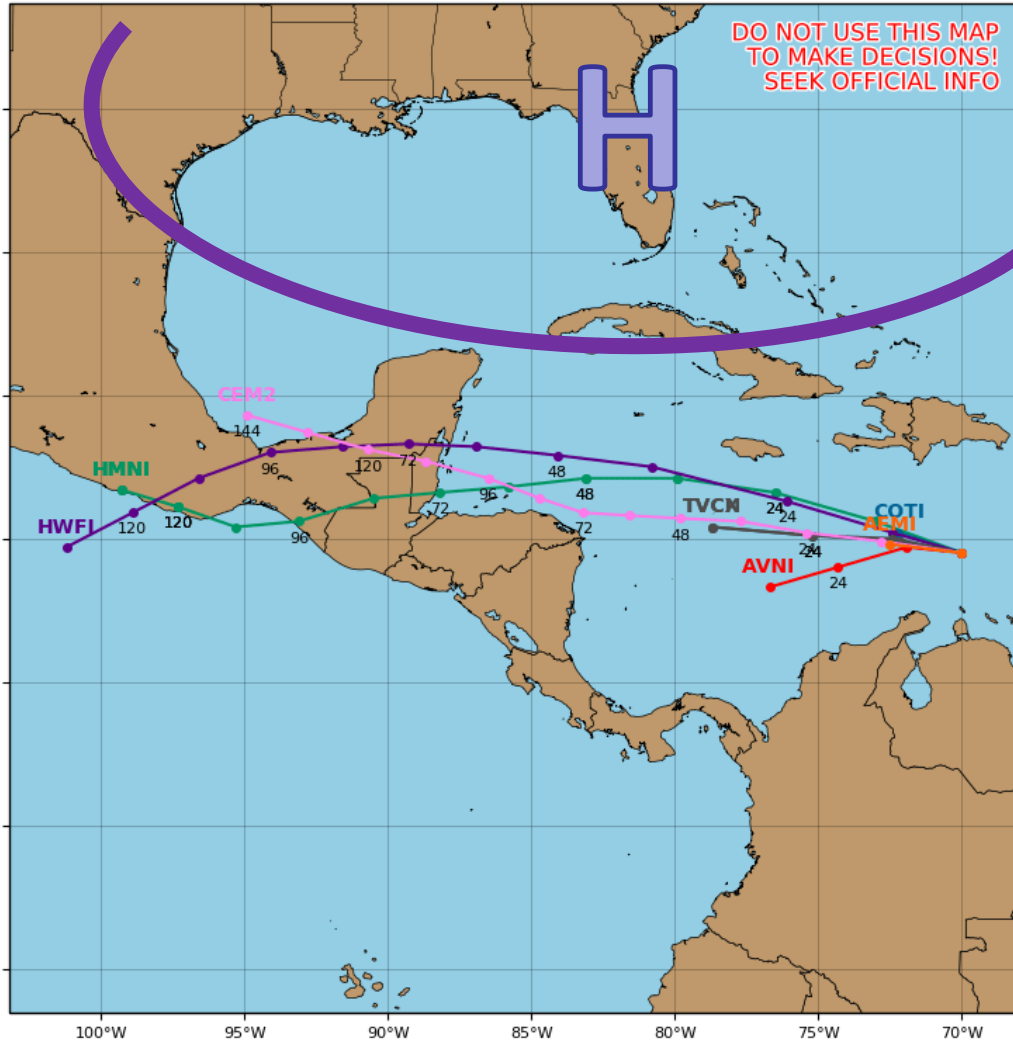
Model Forecast Tracks

Dynamical and Statistical Models – Invest 99L

Invest 99L Model Track Guidance

Initialized at 12z Aug 31 2020

Levi Cowan - tropicaltidbits.com

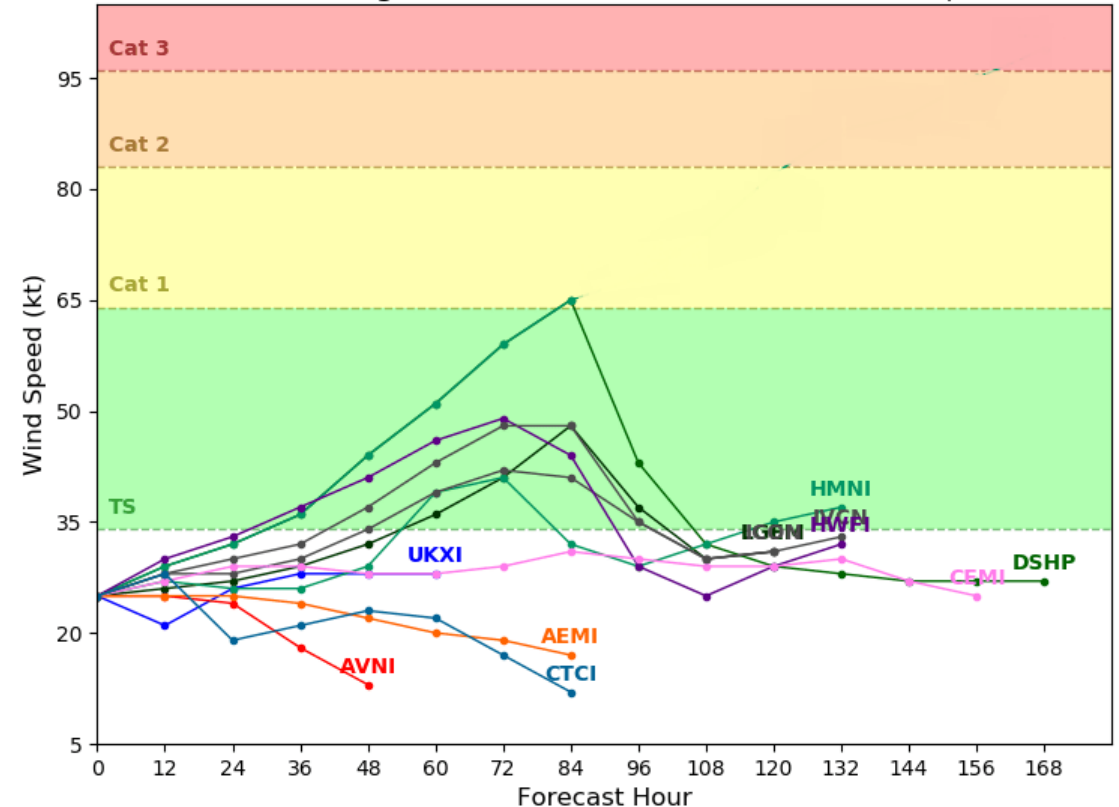


Strong high pressure over the Gulf of Mexico and Southeast United States will push the tropical wave west towards Central America and the Yucatan Peninsula. Gradual organization of the system will continue up until landfall, but a significant hurricane is not expected.

Invest 99L Model Intensity Guidance

Initialized at 06z Aug 31 2020

Levi Cowan - tropicaltidbits.com





Tropical Weather Outlook

Possible Area of Development During the Next 5 Days ([LINK](#))



Five-Day Graphical Tropical Weather Outlook

National Hurricane Center Miami, Florida



www.hurricanes.gov

Disturbance 3

3
(30%)

8:00 am EDT
Mon Aug 31 2020

100W 90W 80W 70W 60W 50W 40W 30W 20W

Current Disturbances and Five-Day Cyclone Formation Chance: X < 40% X 40-60% X > 60%

Tropical or Sub-Tropical Cyclone: ○ Depression ⚡ Storm ⚡ Hurricane

⊗ Post-Tropical Cyclone or Remnants

A tropical wave is expected to emerge off the coast of Africa in a couple of days.

Gradual development of this system will be possible through the end of the week while it moves slowly westward over the far eastern tropical Atlantic Ocean.

This system does not need to be monitored for Florida impacts at this time. This system does not pose a threat to Florida for the next 10 days, if at all.

*Formation chance through 48 hrs...low...near 0%

*Formation chance through 5 days...low...30%



Tropical Weather Outlook

Possible Area of Development During the Next 5 Days ([LINK](#))



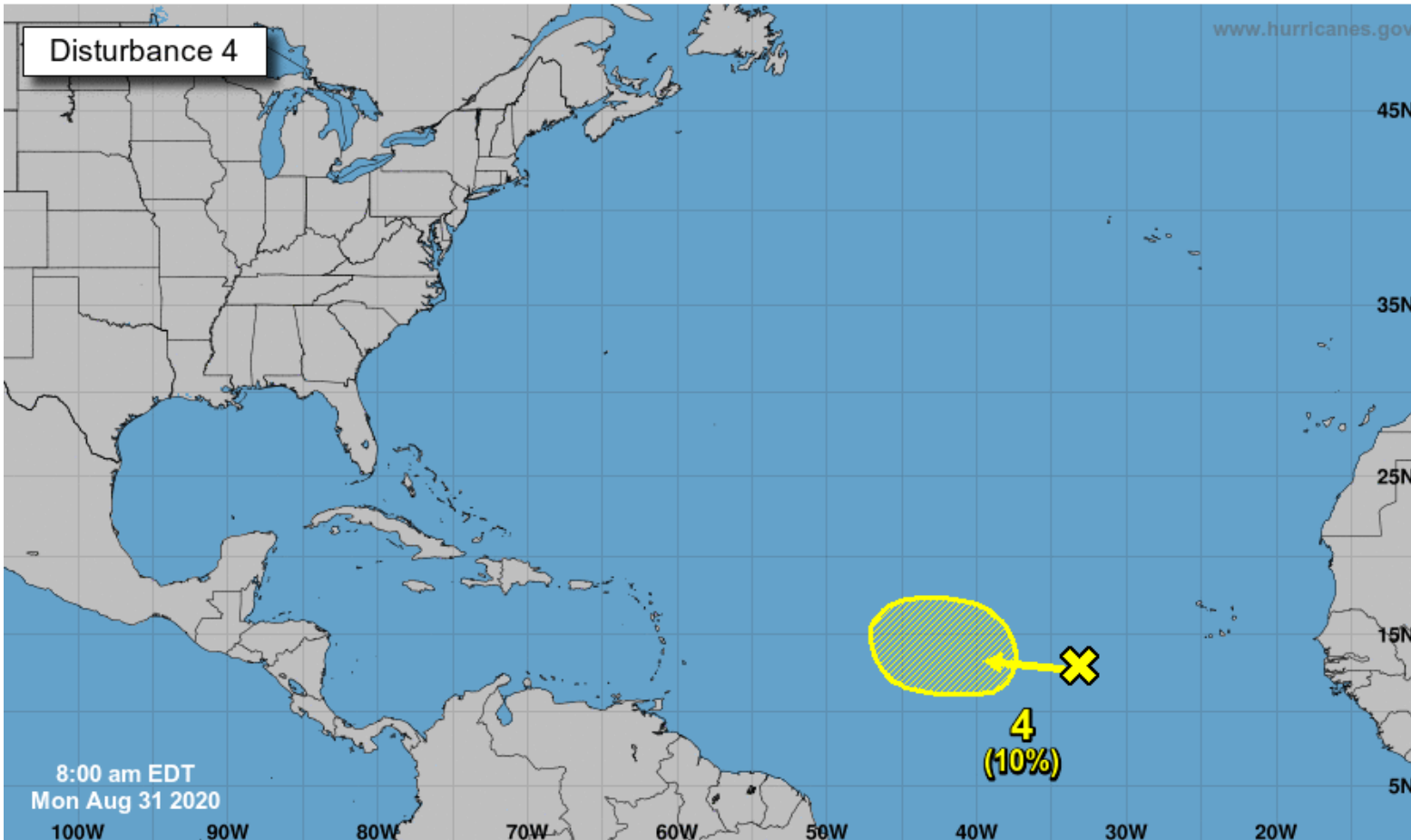
Five-Day Graphical Tropical Weather Outlook

National Hurricane Center Miami, Florida



www.hurricanes.gov

Disturbance 4



8:00 am EDT
Mon Aug 31 2020

Current Disturbances and Five-Day Cyclone Formation Chance:
 Tropical or Sub-Tropical Cyclone:
 < 40% 40-60% > 60%
 Depression Storm Hurricane
 Post-Tropical Cyclone or Remnants

Another tropical wave is located over the eastern Atlantic Ocean, several hundred miles southwest of the Cabo Verde Islands.

This system is producing little shower activity, and further development of this system is not expected.

This system does not need to be monitored for Florida impacts at this time. This system does not pose a threat to Florida for the next week, if at all.

***Formation chance through 48 hrs...low...near 0%**

***Formation chance through 5 days...low...10%**



Steering Currents

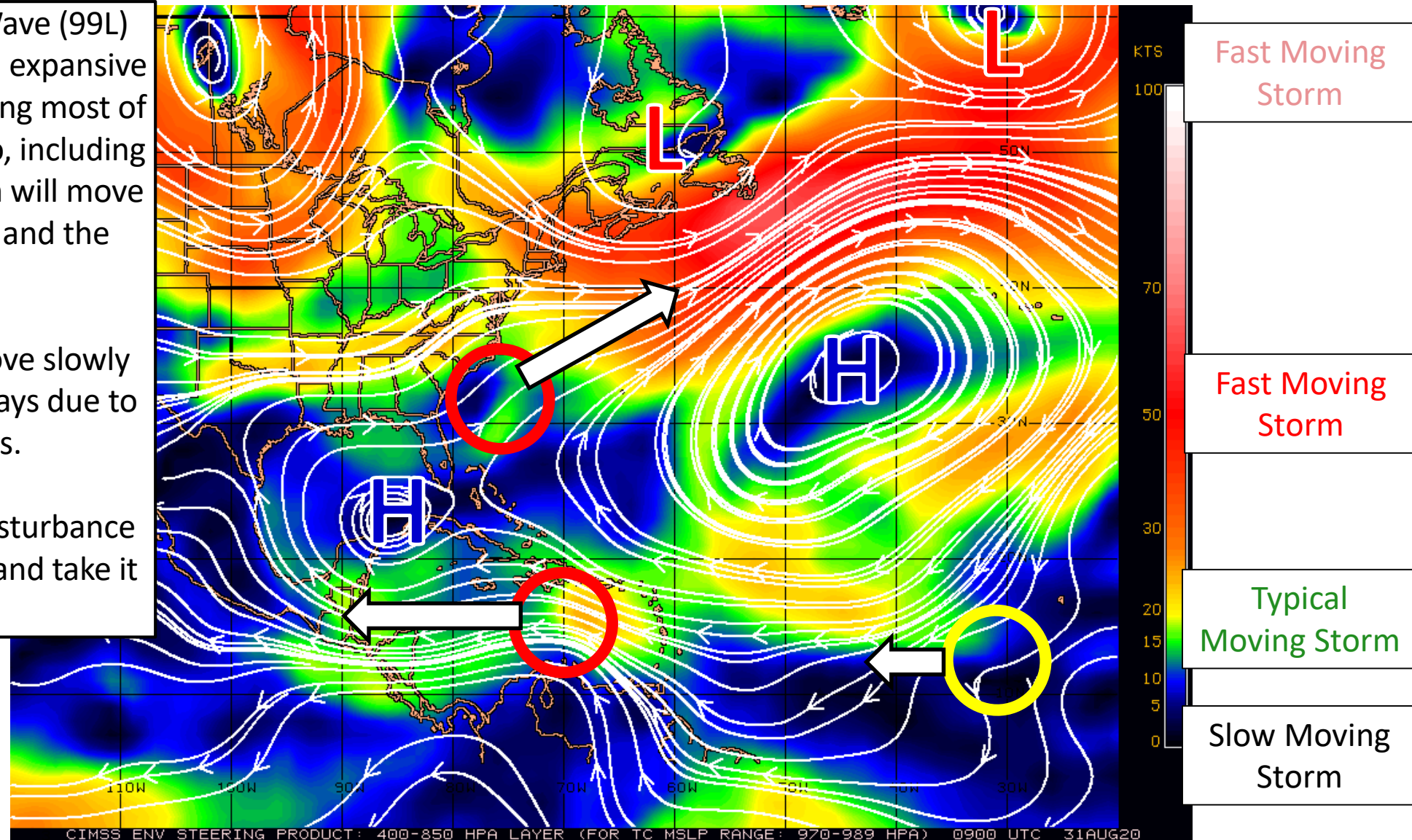
What is Moving the Systems?

Color denotes the movement speed through the atmosphere and thin white lines denote direction. Tightly clustered white lines represent faster movement as well.

The Caribbean Sea Tropical Wave (99L) will be steered westward by an expansive area of high pressure dominating most of the Atlantic and Gulf of Mexico, including near South Florida. The system will move inland over Central America and the Yucatan Peninsula.

The Cabo Verde Wave will move slowly westward over the next few days due to weak steering currents.

A cold front will pick up the disturbance developing off the East Coast and take it out to sea.





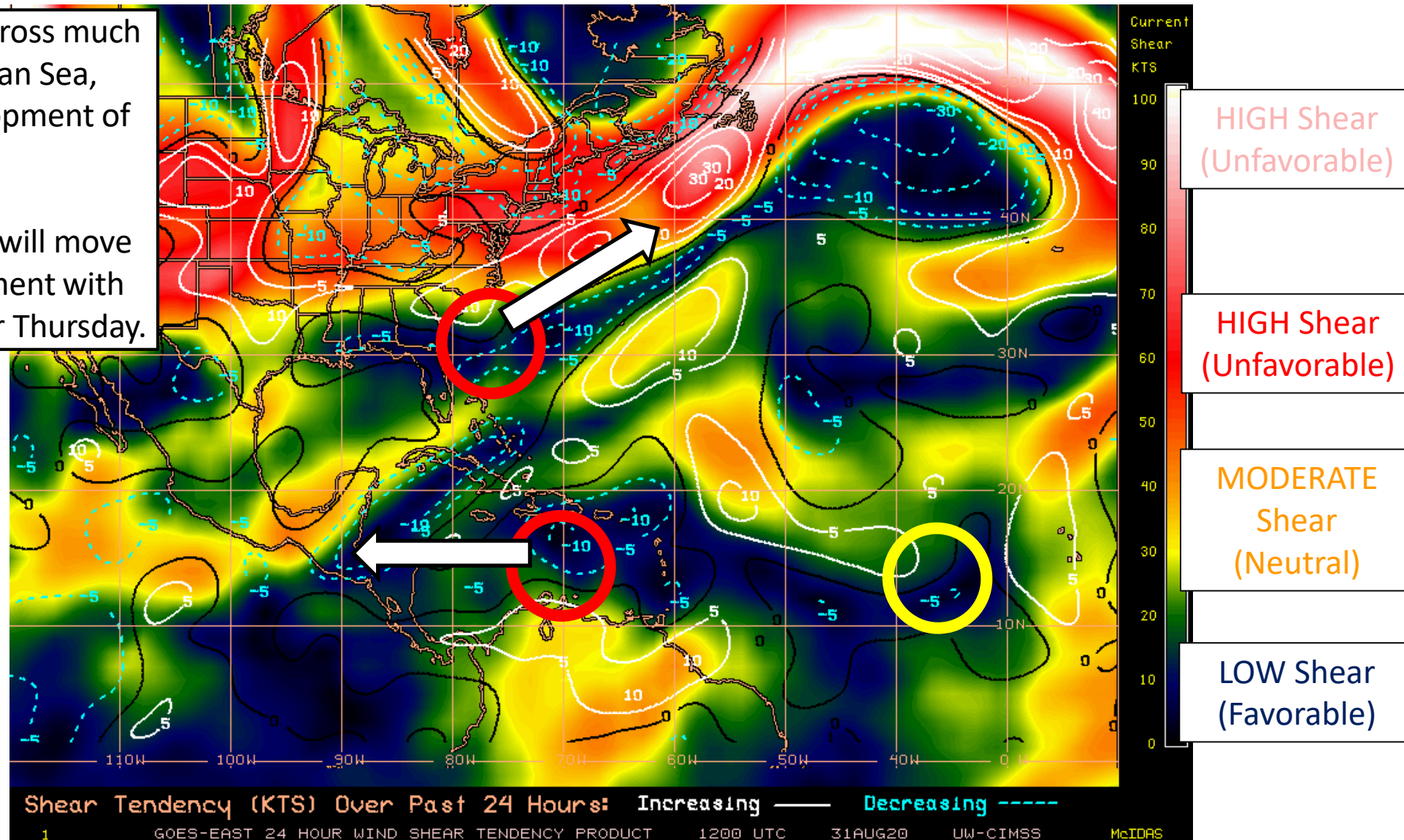
Wind Shear

Is the environment favorable for the systems?

Color denotes the amount of wind shear and the lines denote how it have changed over the last 24 hours (dotted lines show decreasing shear and solid lines show increasing).

Wind shear is currently low across much of the Atlantic and Caribbean Sea, favoring some gradual development of each system.

Invest 90L near the Carolinas will move into an unfavorable environment with high wind shear Wednesday or Thursday.

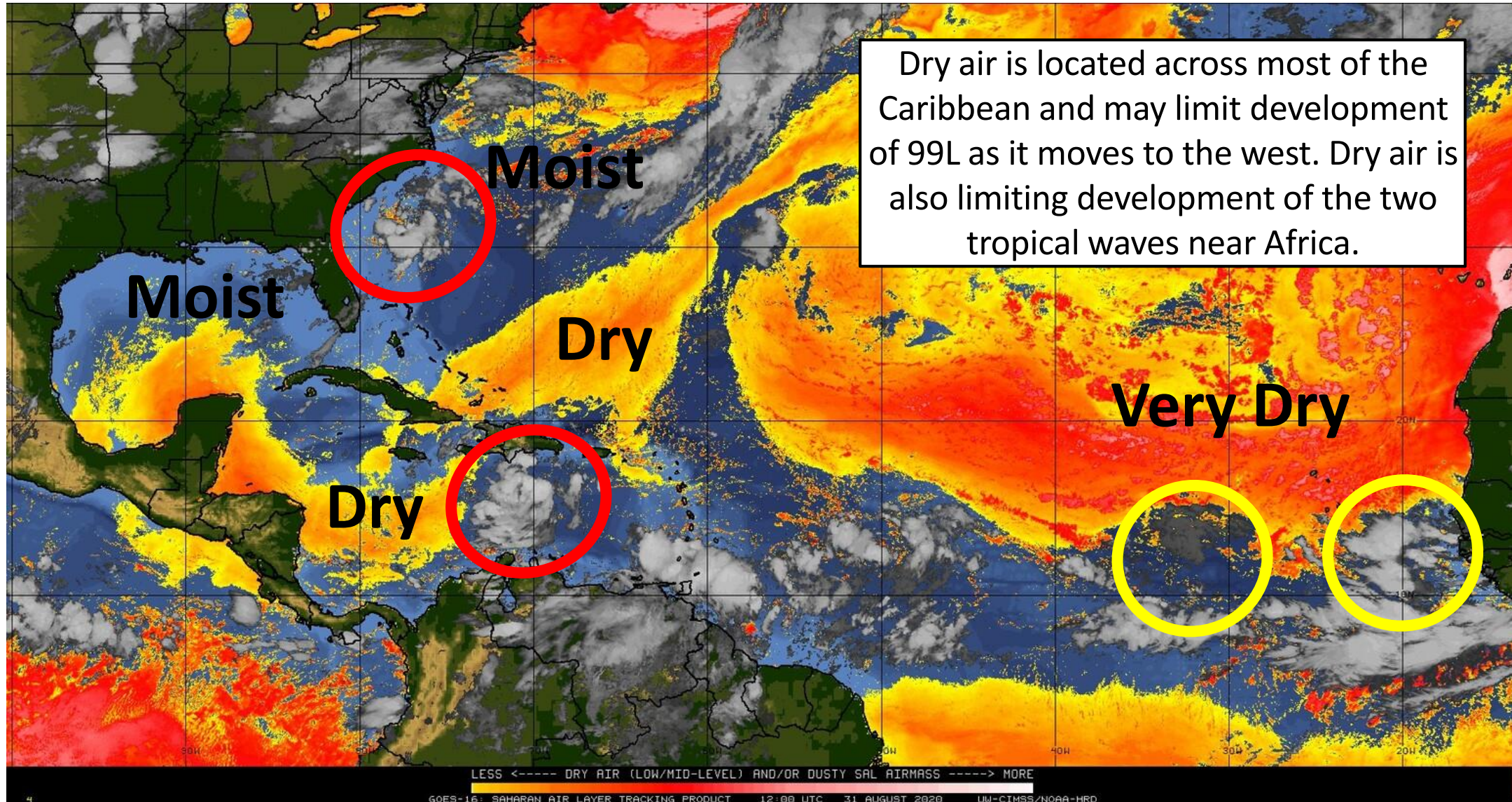




Dry Air & Saharan Dust

Is the environment favorable for the systems?

Color denotes concentration of Saharan Dust or dry, stable air.





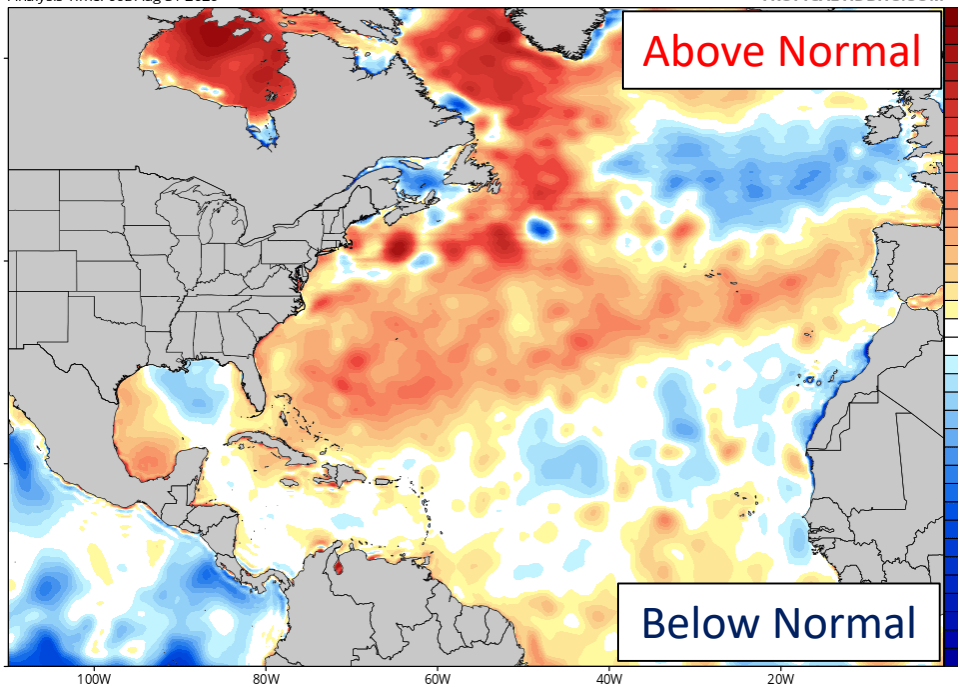
Sea Surface Temperatures & Anomalies

Is the ocean favorable for the system?

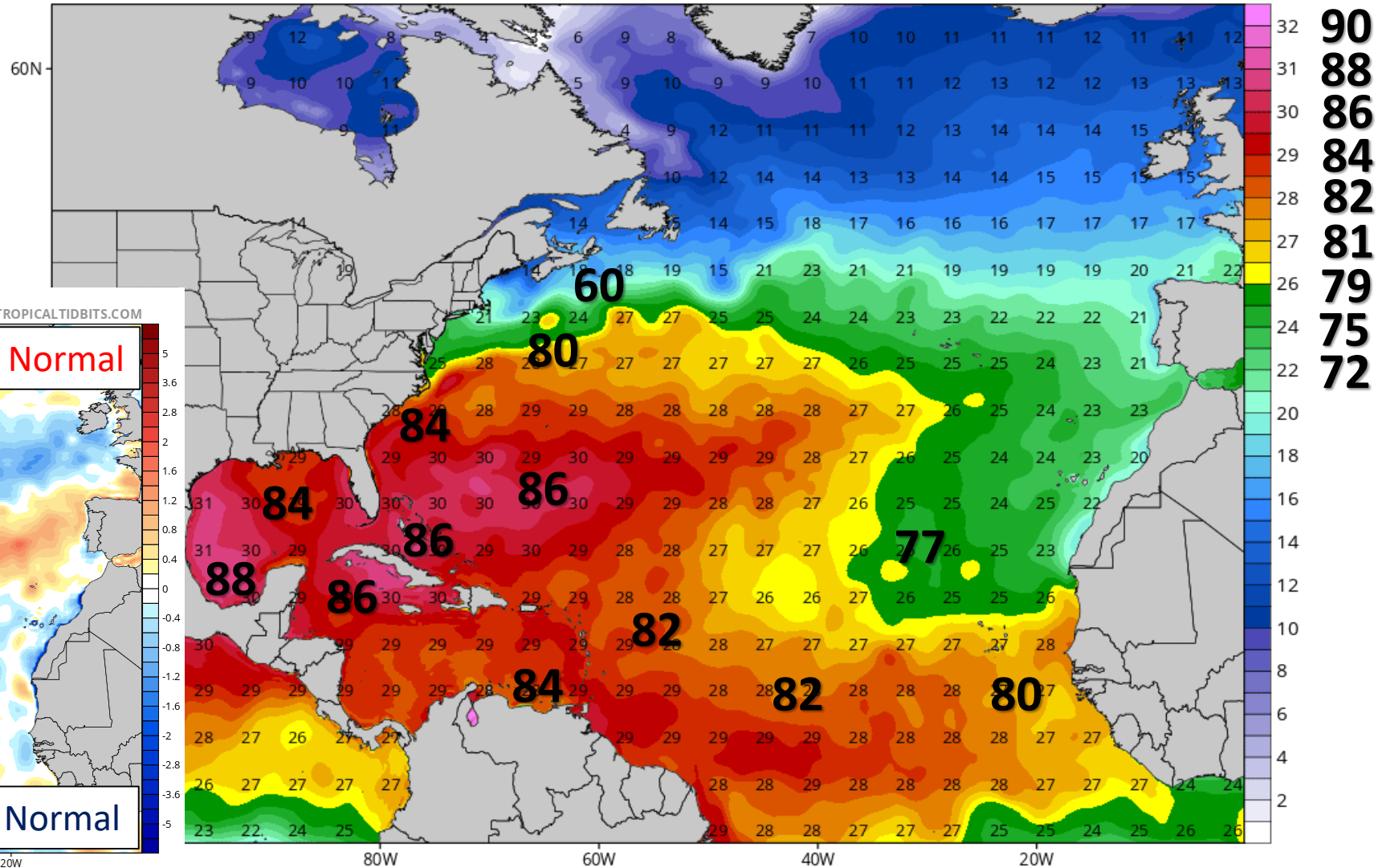
Water temperatures are supportive for tropical development across the entire Atlantic basin.

The small area of cooler waters in the Gulf of Mexico is the wake of Laura and Marco.

CDAS Sea Surface Temperature Anomaly (°C) (based on CFSR 1981-2010 Climatology)
Analysis Time: 06z Aug 31 2020



CDAS Sea Surface Temperature (°C)
Analysis Time: 06z Aug 31 2020





Overall Summary

Invest 90L - East Coast Low

- An area of low pressure is developing off the southeastern coast of the U.S. A tropical depression is likely to form today or tomorrow and Hurricane Hunters may investigate the system this afternoon.
- The system will move northeast, away from land, and into the open waters of the North Atlantic.
- This system has a 70% (high) chance of formation during the next 48 hours and 5 days.

Invest 99L - Caribbean Tropical Wave

- A tropical wave in the Central Caribbean is producing disorganized showers and thunderstorms around a broad low pressure.
- The wave will move through the Caribbean Sea over the next few days towards Central America.
- This system has a 70% (high) chance of formation during the next 48 hours and an 80% (high) chance during the next 5 days.

Cabo Verde Tropical Wave

- A tropical wave a few hundred miles southwest of the Cabo Verde Islands is also producing limited showers.
- Dry air has made the environment unfavorable and development is no longer expected.
- This system has a 0% (low) chance of formation during the next 48 hours and a 10% (low) chance during the next 5 days.

Africa Tropical Wave

- A new tropical wave is forecast to move off the coast of Africa in a couple of days and may gradually develop.
- This system has a 0% (low) chance of formation during the next 48 hours but a 30% (low) chance during the next 5 days.

Florida Outlook:

- None of the systems being monitored currently pose a direct threat to Florida. Invest 99L in the Caribbean will be monitored.

The next briefing packet will be issued late Tuesday morning, or sooner if a system develops. For the latest information on the tropics, please visit the National Hurricane Center website at www.hurricanes.gov.



TROPICAL UPDATE



Created by:

Michael Spagnolo, Deputy State Meteorologist

Michael.Spagnolo@em.myflorida.com

State Meteorological Support Unit

Florida Division of Emergency Management

Users wishing to subscribe (approval pending) to this distribution list, register at:

https://public.govdelivery.com/accounts/FLDEM/subscriber/new?topic_id=SERT_Met_Tropics.

Other reports available for subscription are available at:

<https://public.govdelivery.com/accounts/FLDEM/subscriber/new?preferences=true>